



IT'S FREE

EVERY FRIDAY

NEMO
Trader

701 East LaHarpe St, Suite C,
Kirksville, MO 63501 • P.O. BOX 809
660-665-8500 or 660-988-6830
Our New Email: sales@nemotrader.net

CALL US FOR YOUR ADVERTISING NEEDS

FREE

NEW EDITION EVERY FRIDAY!
VOL. 29 • NO. 55 • FEBRUARY 18, 2022

NEMO *Trader*

THE NEMO TRADER

PO BOX 809 • KIRKSVILLE, MO 63501 • PHONE 660-665-8500

Web Site: nemotrader.net • Email: sales@nemotrader.net

A WEEKLY ADVERTISER SERVING ALL OF NORTHEAST MISSOURI AND THE SURROUNDING AREA

- Antiques
- Collectibles
- Salesman Samples
- 45 Guns + Ammo
- Signs & More Displays
- 1-Run ad Clip-Save

- Lunch by Amish Ladies + a Benefit Bake Sale
- Over 500 Lot Items
- Free Coffee & Donuts Till Sale Time
- 300 pcs of Griswold & Other Cast Iron

AUCTION

HOSTED BY CHRIS AND FREDA GINGERICH
CONTACT CHRIS @ 641-658-2425 FOR MORE INFORMATION


SATURDAY	8:30AM SHARP DOORS OPEN AT 7:30AM FOR PREVIEW	28000 HWY 5 CINNATI, IA 52549	6 MI. SOUTH OF CENTERVILLE, IA ON HWY 5 OR 14 MILES NORTH OF UNIONVILLE, MO
-----------------	---	-------------------------------------	---

SEE THE FULL LISTING FOR THIS AUCTION ON PAGE 12

FOR SALE
All Sired Angus Bulls,
14 & 18 Months Old.
Harold Trump
660-341-5730

**GOOD QUALITY
ALFALFA HAY**

1st cutting available.
Delivery Available



Call Loyol Miller
660-956-3420

Golden Grain Bins-Winter Discount

Grain Bins	Floors w/12"Supp. & Flashing
18'x18' 4,195bu. \$ 7,029	18'....\$1,962 30'....\$ 5,476
27'x21' 11,265bu. \$14,108	21'....\$2,682 36'....\$ 7,801
42'x24' 32,245bu. \$32,886	27'....\$4,474 42'....\$10,623

Golden Grain

GMLS Industries, Inc.
PH: 660-699-2179 or 620-983-2136
www.gmlsindustries.com

For Your Equipment Needs!

LOTS OF USED EQUIPMENT AVAILABLE

Vermeer 605 X Balers, Twin Bales, Tralled Mowers, Disc Mowers, Tedders, Bale Processors-
Offer high capacity, speed, reliability, efficiency, fuel savings...
DeWeze Bale Beds-
Lift, load, transport and feed big, round bales...
Danuser Post-Hole Diggers-
Offer quality & reliability, outperforms the competition...

Cattle

21 outstanding Simmental and Sim-Angus cows. Bred to top bulls of the breed. To start calving 2-15-22. Average age - coming 6 years. Pregnancy checked in 3rd stage. 1400 pounds. Papers available. Drake Simmental, Centerville, IA. Phone 660-895-9422.

Hay/Feed/Seed

Fourth cutting alfalfa, 400 small square bales, RFQ 181, Protein 23, \$7.00 each. Third cutting alfalfa, 120 small square bales, \$7.00 each. Free delivery within 50 miles of Memphis, Mo. 30 big square bales of alfalfa, RFQ 118, Protein 18, \$75.00 each. 660-341-2203.

Hay/Feed/Seed

Wet wrapped big squares clover hay, 3x3x6 bales, 30% moisture, lab analysis available. Good quality feed. \$50.00 a bale or \$125.00 a ton. Delivery available. Call Loyol Miller. 660-956-3420.

Equipment & Supplies

2615 Legend Bush Hog, 15', laminated tires, chain guards, 540 PTO, very low use, was in storage 9 yrs, \$11,950. Call 573-881-3557

Hay/Feed/Seed

43 round bales of mixed grass hay; 34 round bales of alfalfa mixed bales. Hay is lab tested and surface wrapped, 1300 lbs bales, Small square bales 2nd cutting. Watson hay sales 660-341-4031

2020 and 2021 Large big round bales mixed hay. Call 660-342-5992

HIGH QUALITY Hay, \$45 per bale. 217-653-4762

Land/Pasture

Pasture and hay ground needed around Adair and Knox County. Please Contact 660-216-5887 or 417-773-2507

John Deere 560 M Baler, net, kicker, 11,000 bales, big tires, shedded, \$29,500. Call 573-881-3557

Big round bales, mixed grass, no rain, net wrapped, stored in barn, \$45.00. Also, brome inside. Kahoka area. 217-257-1385 anytime.

Large round bales mixed hay. Never wet, net wrapped. 660-216-7696.

WANTED: Someone to provide care and pasture for 50 cow/calf pairs. From April 15th to November 1st. 660-216-5535

Two Red Angus/Charolais Crossbred Bulls, 16-18 months old, guaranteed, sound, \$2,500 choice. Call 573-881-3557

Big round bales mixed grass hay, net wrapped. Delivery available. Bob Campbell, Memphis, MO. 660-341-9054

Mixed grass hay, big round and small squares. Stored inside on pallets. Also some outside, LaBelle, MO. 573-470-0705.

Have Clutter? Need room? Call the NEMO classifieds. We can help! 660-665-8500.

Two John Deere third links, two category 3 point bale spear, fits back or front of tractor. Good condition. 660-665-9199.

USED EQUIPMENT

BALLERS	Rakes
605 N Net	R2800
605 L Net	R2300
605 K Net	VR1224

MOWERS	TEDDERS
TM 1210	TD250
8040	
7030	
Vicon 4000	

BALE PROCESSORS	
	BPX 9000
	BPX 9010

Liebhart Sales, Inc.
17546 Lacey Drive -
New Boston, MO. 63557
660-689-3406

Call Today!!

TRULY UNIQUE



3505 Pivot Fold Planter | 8 ROW 30" | 6 ROW 30"

Uniquely positioned as a small frame basic or advanced technology planter for smaller operations, the Kinze 3505 pivot fold planter is simple to operate, high performing, and available with or without split rows. With bulk-fill seed hoppers, and liquid and dry fertilizer options, you will be in and out of fields quickly.

Simple & easy to use | **Outfitted with basic features** | **Long life & low costs**
Blue Vantage display | **or Blue Drive technology** | **with 05 Series upgrades**

EXPERIENCE THE TRULY UNIQUE AT YOUR LOCAL KINZE DEALER

WWW.QUINCYTRACTORLLC.COM
833-774-1606



NEW AIR DRILL:
QUINCY - NEW HOLLAND P2085 - 7.5" SPACING - 30', 48 OPENERS - CALL

NEW 24 ROW PLANTERS:
QUINCY - KINZE 4905 - 24ROW 30" TRUE SPEED - TRUE DEPTH HYDRAULIC DEPTH CONTROL, LIQ FERT INFURROW SCALES - CALL
QUINCY - KINZE 4905 - 24R30" TRUE SPEED, TRUE DEPTH HYDRAULIC DEPTH CONTROL, SCALES, CAMERA

NEW 16 ROW PLANTERS:
BG - KINZE 3605 - 16R31 BULKFILL PLANTER - TRUE RATE VAC, AG LEADER INCOMMAND 1200, PDP, C/B/NT, SPIKED CLOSING WHEELS, SCALES, PTO PUMP
HANNIBAL - KINZE 4905 - 16R30 BULKFILL PLANTER, TRUE SPEED, TRUE DEPTH, 2 POINT, SCALES, CAMERA

NEW 12 ROW PLANTERS:
BG - KINZE 3605 - 12R23 BULKFILL PLANTER - SPOKED GAUGE WHEELS, C/B/NT, KPM III, FURROW CRUISERS
QUINCY - KINZE 3605 - 12R23 BULK, AG LEADER CLUTCHES INCOMMAND 1200, C/B/NT, WORK LIGHTS

NEW 8 ROW PLANTERS:
BG - KINZE 3505 - 8R15 BULK - KPM III, C/B/NT, WORK LIGHTS, SPIKED CLOSERS
HANNIBAL - KINZE 3505 - 8R15 - BOX - KPM III, BEAN METERS / NT, WORK LIGHTS, RUBBER CLOSERS
QUINCY - KINZE 3505 - BOX - C/B/NT, KPM III, RUBBER CLOSERS
BROOKFIELD - KINZE 3505 - BOX - C/B/NT - RUBBER CLOSERS

USED DRILLS:
JOHN DEERE 8300 - 13' DRILL - 7.5" SPACING, \$2500
JOHN DEERE 710 DRILL - JUST TRADED FOR AT QUINCY
CASE IH 5400 - 15' DRILL WITH CASE IH COULTER CADDY - \$9500 - BG

USED 24 ROW PLANTER:
CASE IH 24R30 - PTO PUMP, VAC, \$59,000 - H

USED 16 ROW PLANTERS:
2016 - WHITE 8516 - 16R30 - C/B/NT - SHARK TOOTH RESIDUE - \$75,000 LOW ACRES - Q
GREAT PLAINS - YP1625 - BULKFILL - PRECISION METERS, NT COULTERS, KEETONS - \$45,000 - H
2010 - KINZE 3600 - 16R31 - BULK - C/B/NT, VAC, KEETONS, RUBBER V - \$99,900
KINZE 3600 - 16R31 - BULK - C/B/NT - EDGEVAC, KPM III, BULK - \$85000 - BG
2013 - KINZE 3600 - 16R31 BULK ASD, BEANS NO TILLS, KPM III - AT BROOKFIELD
2010 - KINZE 3600 - 16R30 - BULK, LIQ FERT, 2020 MONITOR, KEETONS, RESIDUE MANAGERS AT QUINCY
2009 - KINZE 3600 - 16R31 BOX PLANTER - C/B/NT - \$59000 AT HANNIBAL
2007 - KINZE 3600 - 16R31 - BOX, C/B/NT, KPM II, RUBBER V - \$39,500 - BROOKFIELD
JOHN DEERE 1770NT - 16R30 - AG LEADER, ESETS, YETTER TRASH WHEELS AT HANNIBAL

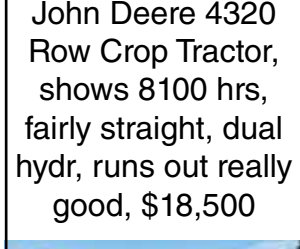
USED 12 ROW PLANTERS:
2012 - KINZE 3600 - 12R23 BOX - C/B/NT, KEETONS, CAST CLOSERS, \$74,900 - BROOKFIELD
1995 - KINZE 2200 - 12R30 - BOX, FLEX ECONOFOLD CLUTCHES ESETS - \$22,000 BROOKFIELD
JOHN DEERE - 7200 - 12R30 CONSERVATION VAC - \$12,000 - HANNIBAL
JOHN DEERE - 1780 - 12/23 CONSERVATION VAC, PTO PUMP - \$12,500 - BROOKFIELD

USED 8 ROW PLANTERS:
2020 - KINZE 3500 - 8R15 BULKFILL - C/B/NT - VAC AT HANNIBAL
2015 - KINZE 3500 8R15 - BOX KPM III, C/B/NT - BOX EXTENSIONS - 2410 ACRES \$59,000
2013 - KINZE 3500 8R15 - C/B/NT - REBUILT - \$56,500 - HANNIBAL
IH 800 CYCLOAIR AT QUINCY
AGCO BLACK MACHINE 12/13 C/B/NT AT HANNIBAL



Equipment & Supplies

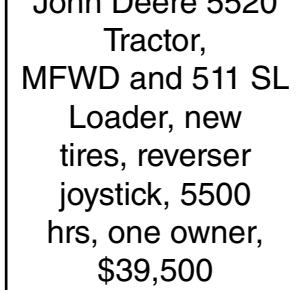
John Deere 1008 Brush Hog, 3 pt, 540 PTO, good, \$4,750. Call 573-881-3557



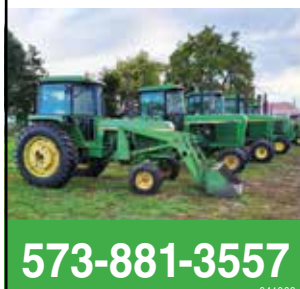
John Deere 285 Disc mower, 10', like new, \$6,250. Call 573-881-3557



John Deere 3020-D Tractor, very straight, 90% tires, WF, \$8,500. Call 573-881-3557



John Deere 4440 Tractor, CAH, QR, triple hydr, 9000 hrs, recent overhaul, one owner, factory duals, 80% rubber, clean, \$31,500. Call 573-881-3557

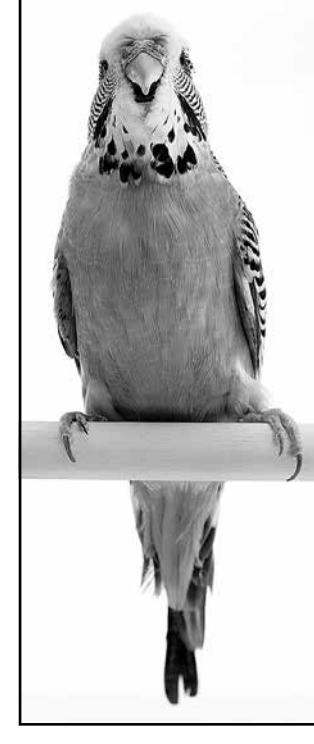
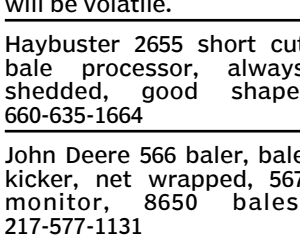


John Deere 5075 E, mechanical front wheel drive cab, CAH, with JD H240 SL Loader, 940 hrs, new engine, same as new, \$42,500. Call 573-881-3557



FIND THE PERFECT PET FOR THE PERFECT PRICE

Find the stuff you want and sell the stuff you don't in the newspaper classifieds.



John Deere 566 baler, bale kicker, net wrapped, 567 monitor, 8650 bales. 217-577-1131

FRONTLINE FENCING LLC

Steel Pipe Fencing.
Custom Built Gates and Livestock Handling Equipment.
Barbed Wire and Woven Wire Fence.
Arrowquip Cattle Handling Equipment.
Post Driver Rental.

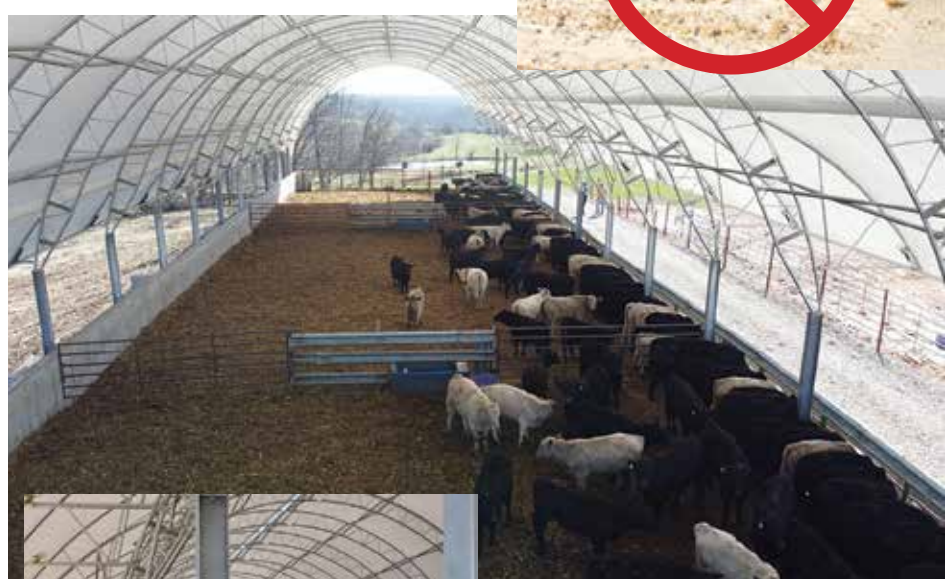


29386 St. Hwy. T
Greentop MO
660-956-2430

Quincy Tractor | Hannibal Tractor | Bowling Green Tractor | Brookfield Tractor

833-774-1606 • www.QuincyTractorLLC.com

Animal Housing, Hay Storage & Much More!!



Skylight Fabric Structures

20749 State Highway VV
Ethel, MO 63539
660-486-3250
833-482-8862

WE GOT YOUR NEEDS COVERED!



FARM TARPS TRUCK TARPS
HOOP BUILDING COVERS

Troyer TARP MFG.

660-486-3301
20264 STATE HWY. VV • ETHEL, MO 63539

Equipment & Supplies

John Deere 5400 Tractor, mechanical front wheel drive cab, 5500 hrs, 541 Loader, new tires, joystick, \$22,500. Call 573-881-3557

John Deere 720 Loader, QT, 7' bucket & bale fork, JD joystick, \$5,500. Call 573-881-3557

JohnDeere 7200 tractor, 2WD, 5400 one owner hours, power quad, Firestone's, clean, \$42,500. Call 573-881-3557

2 New Holland 258 Rakes, with New Holland rake hitch, will rake 2 singles or 1 double, very good paint. 217-577-1131

WANTED TO BUY: Farm Machinery and Estates. Call James L. Johnston. 573-473-4904

Livestock

RED ANGUS BULLS
641-919-1077

Livestock

LOLLI LIVESTOCK MKT, INC.

Tuesday, Feb 22 * 11am
Regular All Cattle Sale

Saturday, Feb 26 - 11am
Bred Heifer, Cow, Cow/Calf, & Bull Sale

TJ DOWELL - COMPLETE DISPERSAL - 20 B/BWF 4-7 year old cows, 4 4-7 year old cow/calf pairs. All cows have been running with Brinkley Angus Bulls. 4 year old Brinkley Angus bull, guarantee semen & trich.

DON RUSSELL - 30 Fancy Black Angus Heifers: 1200 lbs, start calving Feb 26, bred to low birth weight Brinkley Angus bulls, UTD on shots.

CLEAVER FARMS - 15 Angus Heifers: start calving Feb 26, bred to low birth weight Angus bulls. UTD on shots.

LARRY & LAVELLE BRITT - 12 Fancy Black Angus Heifers: start calving March 12. Bred to low birth weight Sydgen bulls. Tract scored, pelvic measured, UTD on shots & Scour Boss.

JOSH MUCK - 10 Fancy Black Angus Heifers: bables born end of Jan. UTD on shots.

BLAKE ERICKSON - 5 Fancy Black Angus Bred Heifers: 1200lbs, Bred to Brinkley Angus bulls, locally sourced heifers, tract scored, pelvic measured, UTD on shots & worming. Have already had scourguard 4KC. Complete MFA mineral program. Calving April 15-May 30.

BEN KELLOGG - 5 Black Angus Heifer Pairs: Calves born mid January, sired by Angus bulls. UTD on all shots.

MARK WILLIS - 20 B/BWF cows: 5-SS, calving now, bred mld Angus bulls.

This is only a partial listing, many more by sale date.

Cafe Open Loll Bros. Livestock Market, Inc. Cafe Open
704 Main st * Macon, MO * 660-385-2516 * www.lollibros.com
Frankie 660-651-4040 * Tim 660-651-3496
Dominic 660-651-4024 * Joseph 660-346-9711 Cattle accepted on Sundays

Livestock

Livestock

Edina Livestock Sales
Edina, Missouri

Friday, February 18th
Special Feeder Calf Sale

Friday, February 25th
Special Cow Sale
John & Caroline Zendenher
250 Angus Cow Dispersal
Additional consignments to come

Wednesday, March 2nd
Steak Dinner & Meeting
TOPIC: LIVER FLUKES
Knox Co Community Center at 6:00 p.m.
RSVP for steak dinner by 2/28/22 to
Canton Vet Clinic (573) 288-3817

To Consign For Any or All Sales or For Information Call:
Owner - Kevin Strange • Cell: 660-341-9974
Ryan Strange • Cell: 660-341-9721
Sale Barn: 660-397-9999

Field Reps:
Bill Tom Hall 660-342-5420 Jason Legg 573-822-8847
Jason Bichsel 660-216-0373 John Powell 660-341-1717

ANNOUNCEMENTS

Notices

Indian Hill Cemetery located in Gifford, is looking for someone to mow, trim and blow. If interested call 660-216-3554

EMPLOYMENT

Maintenance

Schuyler R-1 School District is accepting applications for Maintenance Director for the 2022-2023 School Year Benefits Health insurance, life insurance, retirement, vacation days, personal days, holidays 40 hours per week Salary based on experience and skills set You can find an application on our website www.schuyler.k12.mo.us For questions you can contact Kyle Windy, Superintendent kwindy@schuyler.k12.mo.us 660-956-4125 Schuyler R-1 is an equal opportunity employer

MERCHANDISE

Miscellaneous

Wanted: old decorative ceiling tin to remove from old houses or buildings. Call 660-874-4719.

Yellow Pine Lumber 2x4 thru 2x12 sizes. Shelby Supply 660-299-0615

Sales

Livestock

Edina Livestock Sales
Edina, Missouri

Friday, February 18th
Special Feeder Calf Sale

Friday, February 25th
Special Cow Sale
John & Caroline Zendenher
250 Angus Cow Dispersal
Additional consignments to come

Wednesday, March 2nd
Steak Dinner & Meeting
TOPIC: LIVER FLUKES
Knox Co Community Center at 6:00 p.m.
RSVP for steak dinner by 2/28/22 to
Canton Vet Clinic (573) 288-3817

To Consign For Any or All Sales or For Information Call:
Owner - Kevin Strange • Cell: 660-341-9974
Ryan Strange • Cell: 660-341-9721
Sale Barn: 660-397-9999

Field Reps:
Bill Tom Hall 660-342-5420 Jason Legg 573-822-8847
Jason Bichsel 660-216-0373 John Powell 660-341-1717

Miscellaneous

Ear corn, bulk by the bushel. Also 30 pound bag for squirrel, deer, etc. Phone: Madison, MO 660-665-7055.

Pom-Poodle, male pup, brown sable, shots, vet checked, playful, great coat. \$150.00. 660-739-4474 or 573-248-4623.

Pets & Supplies

AKC Labrador Retriever puppies, all yellow. DOB 10-27-2021. Up to date puppy shots and wormers; vet checked. Lay's Labs-LaBelle, MO 660-956-2482

Brittany pups, 2 males, 1 female, AKC, 12 weeks old, Champion Bloodline \$500. Call for details 641-895-0035

Cockapoos, one female and male, buff color, vet checked, shots and wormed, up to date, ready for new home, \$500 OBO. 660-299-0646

Pom-Poodle, male pup, brown sable, shots, vet checked, sociable, great coat. \$150.00. 660-739-4474 or 573-248-4623.

3 Poochon Puppies, 8 weeks old, 2 males, 1 female, up to date on shots, Sire Mini Poodle, Damn Bischon, \$250 OBO. Joseph James Miller 30918 Golden Rod Trail, LaPlata, MO 63549

Puppies for sale: AKC Standard Poodles, APRI Boxer, Golden Doodles, all up to date on vaccinations and deworming. 660-216-4222

Valentines gifts, Three nine week old designer puppies. 1/4 Rottweiler, 1/4 St. Bernard, 1/4 New Finland, 1/4 Pit. Mom and dad are pets. Beautiful and smart, up to date on shots. Thirty pounds, will be big!! Very loving. \$300.00, located in Downing, Mo. 515-370-3833.

Wanted

Wanted: old ceiling tin to remove from old houses or buildings. Call 660-874-4719.

Building Supplies

LAN-DOW BUILDINGS
"We Build To Suit Your Needs"
"Custom Built"
Pole Barns • Garages • Utility Buildings
"H" Don or Dick Middleton
Memphis Lumber Co.
1-800-337-5858 • 660-465-8595
Fax: 660-465-8596

Sales

Sales

JOIN OUR TEAM



ADVERTISING AND MARKETING SALESPERSON

Are you a people person looking for a new career opportunity? The Kirksville Daily Express/Nemo Trader, with a long history of success in Northeast Missouri, is looking for its next full-time Advertising and Marketing Salesperson.

Our sales staff help current and prospective customers with their advertising and marketing needs. This is the chance for you to get creative and help bring a client's vision to life. Knowledge of the Kirksville area is a plus.

Our ideal candidate is self-motivated and independent. You need to be focused on developing new business as well as maintaining current customers. You also need to be organized and have computer skills. We expect enthusiastic, goal driven people. We offer excellent training and advancement opportunities, plenty of support and the latest in research and marketing tools.

Applicants must have a valid driver's license with a good driving record and a reliable, insured vehicle in order to travel within your territory. No overnight travel is required.

No previous sales experience required, although previous sales experience in any industry is a plus. Kirksville Daily Express/Nemo Trader is known for quality training and support. We offer a base salary, commissions and bonuses.

Our benefit package includes vacation and sick time, health, dental, vision and life insurance, 401K, expense reimbursement, reimbursed mileage and cellphone. Send cover letter and resume to:

Kirksville Daily Express/Nemo Trader

Attn: Nicole Stevens/Human Resources
130 South 5th Street | Quincy, IL 62301
or email to: nstevens@whig.com

KIRKSVILLE
Daily Express

NEMO
Trader



Drop In Interviews Daily

Smithfield
Good food. Responsibly.®

WE'RE HIRING
General Production Workers – Milan, MO

Smithfieldfoods.com/milan -- Starting Pay -- \$18.00 / hr

Smithfield is an EOE, Including Disability/Vets

634289J

Building Supplies

Building Supplies

Backhoe/Bulldozer

Backhoe/Bulldozer

LANCASTER LUMBER INC.
Lancaster, MO.
1-800-424-5071
LAN-DOW BUILDINGS
www.lancasterlumber.com

Show Me Plumbing Services
• General Mini Excavation & Skid Steer Work
• Livestock Watering
• Waterlines & Sewer Systems
• Residential Services & General Plumbing
• Utility Trenching
Stan Schrock 660-988-1163
Greentop, MO 660-766-2636

Premium Metal Roofing
AW Metal Inc.
Metal Roofing Headquarters
641-664-3990 • ammetal.net

Mobile Homes For Sale
Stock mobile homes available: We gottem, single and doublewide 3 and 4 bedroom! Call Tuffy 573-657-2176 amegamobilehomes.com

Air Conditioning/Heating

Auto Repair

The Ultimate Wood Heat.
CLASSIC EDGE
TITANIUM HD SERIES
Outdoor Wood Furnace
• More Comfort - Thermostatically controlled wood heat.
• Peace of Mind - Keep the fire outside and eliminate the dangers associated with indoor wood heating.
• Save Money - Wood is a renewable, inexpensive and often free energy source.
CAMPEN
Heating & Air Conditioning
573-288-8966
Canton, MO
CentralBoiler.com

WOODY'S TIRE & AUTO, LLC
HIRING TIRE TECHNICIAN
STOP BY AND TALK WITH TERRY TODAY!!
1102 GREEN STREET.
KIRKSVILLE • 660-665-9017

Wood & Accessories
Wevers Outside Wood Furnaces, have an assortment of parts, line, and etc. Call 660-423-5242, cell 660-216-9885. Open 6 p.m. - 9 p.m. Monday - Friday, Saturday anytime, call first.

Other-RE Sales

Buying used mobile homes. Porter Homes 573-231-6667

REAL ESTATE SALES

Mobile Homes For Sale
AVAILABLE stock mobile homes immediately, double wide and single, 3 and 4 bedroom. 573-499-9993 columbiadiscounthomes.com

RECREATION

Motorcycles

WANTED TO BUY: Harley Davidson's, any year, any condition, cash money. Days 660-263-1356 or 660-537-0068

Wanted

WANTED TO BUY: Harley Davidson's, any year, any condition, cash money. Days 660-263-1356 or 660-537-0068

Campers & Trailers

2018 thor compass 23TB class B diesel clean automatic rv 11k miles like new price \$22,900 contact - Hollyer1@myrvonsale.com

Good Opportunity for a Handyman 24x65 Double Wide needs finished, has furnace and electricity, \$18,000 OBO. 660-639-3500

True modulars 30 to 60 day delivery available, 3 and 4 bedroom. 573-657-7040 chateauhomes.net

1996 Jayco 5th Wheel Camper, 35' long, needs work, \$3,000 OBO. 660-639-3500

This ad supports journalism. Facebook and Google do not.

#ProtectLocalNews NewsMediaAlliance.org

Campers & Trailers

Campers & Trailers

Bush Hogging

Bush Hogging

ATTENTION LAND OWNERS!
BUYER OF STANDING TIMBER
OWNER / OPERATOR OF SAWMILL - BUY/CUT LOGS
CERTIFIED - BONDED - INSURED
TRI STATE TIMBER L.L.C.
PH. 660-341-4921 or 660-465-2975
353 1/2 GRAND AVE. • MEMPHIS, MO 63555

Home Services

Home Services

Signature
Overhead Doors and Remodeling, LLC
660-785-0248
www.signatureremodelingkv.com
Residential and Commercial Installation and Service

Let us help you with all your advertising needs. Don't know what to say? Call us we can help! 660-665-8500.

SERVICES

Miscellaneous

SCOTT HUSKEY'S HOME SERVICE R-10 Foundation Enclosure Systems for manufactured, modular, & site built homes. Saves on utilities and prevents freeze ups. General maintenance and repairs since 1972 573-696-3468 "GO DAWGS"

Americans discard ONE BILLION TREES WORTH of paper products each year. PLEASE RECYCLE THIS NEWSPAPER

SMALL ADS WITH BIG RESULTS!
Small ads produce big results. Ask about our advertising rates to fit any budget.

Miscellaneous

New Garden Seed, homemade candies, local honey, butter (homemade) kitchen wares, wooden handles, boxed greeting cards. Train Track Candies 11538 Iceberg Ave, LaPlata 3rd lane to your left!

JAGUAR LUMBER
Attn: Land Owners
Buyer of Timber
*All species also Select yard Trees/Logs over 40" diameter,
*Trees are selectively cut to insure optimal Forest Regeneration.
Certified & Bonded | Lavon Gingerich 641-664-2080

KIRKSVILLE MOTOR COMPANY
GMC Toyota Chevrolet
"For your next vehicle purchase, come see me"
JIM BROWN
Cell: 660-216-2190
Desk: 660-956-7102

Beilstein CAMPER SALES
CALL US NOW for the best prices...
573-655-2254
28248 327th Ave. • LaGrange, MO • Hwy 61 South, 4 Miles South of LaGrange, MO

<p>#VENG29V 2014 Vengeance 29V Toy Hauler Dinette Slide-Out \$24,495</p>	<p>#531301 2018 Keystone Sprinter 297FWRLS 3 Slide-Outs, Rear Entertainment \$39,995</p>	<p>#WP16TS 2020 Cherokee Wolf Pup 16TS Rear Dinette, Queen Bed, Light Weight \$19,995</p>
<p>#931299 2017 Coleman Light 2605RL Large Slide-Out, Rear Living Room, Queen Bed \$19,995</p>	<p>#106050 2022 Keystone Springdale 293RK Large Slide-Out, Rear Kitchen, Fireplace \$38,95</p>	<p>#202219DBXL 2022 Salem Cruise Lite 19DBXL Double over Double Bunk Beds, Oversize Refrigerator \$27,995</p>

Beilstein Camper Sales
www.beilsteincampersales.com

Since 1956, family owned Beilstein Camper Sales has provided exceptional value and service to our customers. We feature a wide selection of new RVs from Forest River, Heartland and Keystone. We're on the Avenue of the Saints along side Highway 61, four miles south of La Grange, Missouri. Stop by today to get a great deal!



YODER'S PROCESSING

PORK - DEER - BEEF

Quality Cuts Plus

Beef & Pork processing available

NOW!!

- Patties
- Cure & Smoke
- Vacuum Seal
- Summer Sausage

- Snack Sticks
- Jerky
- Fast Turnaround on Deer

SCHEDULE YOURS TODAY

660-486-3221

(Closed Sundays)

NEW FACILITY!
10+ Years Experience

637159cb

13736 Beechnut Street, Ethel, MO 63539 | Don't have your own Animal to Process, No Problem, Call Us!

VICTORY

Metals & Recycling

Kirkville, MO 660-665-8000

victorymetalrecycling.com

For current scrap prices call or visit our Facebook Page

★ Construction/ Debris Recycling

Visit Kirkville's construction & debris recycling facility and save trips to the landfill! Take advantage of this service for solid waste removal by bringing your landfill items to Victory Metals C & D recycling facility located at 3602 N. Industrial Rd.

★ Roll-Off Container Service

10-20-30-40 Cubic Yard Dumpsters



3602 N. Industrial Rd.,
Kirkville, MO 63501
djanesvmr@gmail.com
www.victorymetalrecycling.com

WANTED

Suzuki Samari, 4x4

660-388-6389



Need something? Let us help you. You can advertise that you are looking for a special item. Call 660-665-8500 for more information.

Automobiles

Judd Motors

Call 660-457-3700
Hwy 63 North, Lancaster, MO

2017 Colorado
crew cab, Z71, V6, 4x4, heated seats, NAV, new tires, 1 owner, only 75k miles, red, only **\$30,900**

2015 Impala
LTZ, leather, sunroof, only 97k miles, white, only **\$10,900**

2014 Grand Cherokee
4WD, V6, Cloth, Charcoal, very nice, 131K **\$15,900**

2010 Colorado
ext cab, 4x4, new tires, only 130k miles, white, only **\$10,900**

2002 Chevy 1500
4WD, 5.3L, Ext. Cab, Cloth, White, Nice, 147K **\$7,995**

1998 Chevy 3500
3500, single cab, 8 ft bed, 5 sp manual trans, 4x4, duramax, only 179k miles, black, only **\$10,900**

Cumberland Building Dealer



www.juddmotors.com

In Business Over 75 Years
Curly and Kevin Judd

NEMO Trader Classified COUPON

2 Classified Ads for \$5.00

20 cents per word over 20 words

For an additional \$1.00 run in the Kirkville Daily Express one time.

For and additional \$2.00 run in the Saturday Kirkville Daily Express and Kirkville Crier one time each.

Must be Mailed in or brought in along with payment

Picture Ads Not Included with Coupon!

Choose Classification

- | | | |
|--|--|--|
| <input type="checkbox"/> Agri-Business | <input type="checkbox"/> Real Estate | <input type="checkbox"/> Transportation |
| <input type="checkbox"/> Announcements | <input type="checkbox"/> Rentals | <input type="checkbox"/> Yard Sales |
| <input type="checkbox"/> Employment | <input type="checkbox"/> Real Estate Sales | <input type="checkbox"/> Auctions & Estate Sales |
| <input type="checkbox"/> Financial | <input type="checkbox"/> Recreation | |
| <input type="checkbox"/> Merchandise | <input type="checkbox"/> Services | |

Ad No. 1 Each Box Represents a Word (20 words or less)

Ad No. 2 Each Box Represents a Word (20 words or less)

Name _____

Mailing Address _____

Phone Number * _____
this is required*

PO Box 809 Kirkville, MO 63501 • 660-665-8500

For Sale 2009 CHEVY SILVERADO 1500

EXTENDED CAB, 4X4, 5.3, New tires alloys, Tow, Ranch Hand Grill Guard. Runs & Drives excellent, NO Rust. 158,000 miles.

\$12,700. Selling price

Accelerators Since "1974"
Kahoka, MO

660-727-3455 or 217-257-1385 Anytime

Wanted

WANTED

Jeep Cherokee
1993-1996 4x4, good body, prefer 2-door



660.388.6389

Parts & Services

Parts for vehicles, pickups, farm and construction equipment, semis. tranny's and motors, body parts matching your paint. 99% will have. 800-807-9612.

Chevy tailgate 2000-2007, driver left hand door for 2008 Chevy 3/4 ton. All in good condition. 660-676-9199.

Call us for all your advertising needs. 660-665-8500.

Wanted

WANTED DAMAGED OR UNMARKETABLE GRAINS. CALL CHRIS TAYLOR 660-341-8080

Small ads produce **BIG RESULTS!**

Ask about our advertising rates to fit any budget.

There's a better way to get attention.

Keep life simple. Take out an ad.



Buy with confidence. We have you covered.



100% Satisfaction™



ACCIDENT Protection Plan™



SERVICE Contract Plus™



PAY Your Way™

For more information visit car-mart.com/peace-of-mind



car-mart.com

660.956.4849 | 2015 NORTH BALTIMORE KIRKSVILLE

660-956-4849 • 2015 North Baltimore • Kirksville

- Peace of Mind Package
- Service Contract Plus
- Accident Protection Plan
- 100% Satisfaction
- Pay Your Way
- Low Down Payments
- Quality Used Vehicles
- Flexible Financing
- Hand Selected Vehicles
- Convenient Payment Options
- Start Your Approval Online
- Over 150 Locations
- 40 Years in Business
- We Buy Cars



2015 KIA OPTIMA
FWD, 4 Cyl., Silver



2006 DODGE RAM 1500
4WD, 8 Cyl., Red



2012 FORD FOCUS
FWD, 4 Cyl., Blue



2013 FORD EXPLORER
FWD, 4 Cyl., White



2003 FORD WINDSTAR VAN
FWD, 6 Cyl., Silver



2015 CHEVROLET TRAVERSE
FWD, 6 Cyl, Silver



2013 NISSAN SENTRA
FWD, 4 Cyl., Gray



2013 FORD EXPLORER
FWD, 6 Cyl., Brown



2012 TOYOTA RAV4
4WD, 4 Cyl., Black



2011 DODGE RAM 1500
4WD, 8 Cyl., Gray, 4 Doors



2008 FORD FUSION
FWD, 6 Cyl., MAROON



2013 FORD FOCUS
FWD, 4 Cyl., Silver



2010 FORD F150
FWD, 8 Cyl., Red



2012 CHRYSLER TOWN & COUNTRY
FWD, 6 Cyl.



2010 NISSAN ALTIMA
FWD, 4 Cyl., Blue



2016 HYUNDAI ELANTRA
FWD, 4 Cyl., Blue



2010 NISSAN TITAN
PRO-4X, 4WD, 8 Cyl., Red



2011 CHEVROLET SILVERADO 1500
4WD, 8 Cyl., Silver, 4 Doors



Keeping You on the Road



ELIZABETH WALTER
GENERAL MANAGER

FIND THE
RIGHT RIDE
FOR THE
RIGHT PRICE

Find the stuff you want.
Sell the stuff you don't.
Save time and money with
the newspaper classifieds!



Warranty • 319-696-2981 • Warranty • www.rsautosalesinc.com • Warranty • 319-696-2981 • Warranty • 319-696-2981

<p>149,350 Miles \$3,900</p> <p>'03 Dodge Grand Caravan, 3.3L V6 Auto, Siebert Mobility Handicap Conversion Van, Manual Wheelchair Ramp, Local Trade, Normal Wear</p>	<p>144,242 Miles \$31,900</p> <p>'13 GMC Sierra K3500 Denali HD, 6.6L Duramax Diesel, 4x4, Allison Trans, Auto, Dually, Crew Cab, Camera, Sunroof, Leather</p>	<p style="text-align: center;">R.S. AUTO INC. Office (319) 696-2981 www.rsautosalesinc.com Auto Sales 214 S. Center St. Lockridge, MO 64635 319 696 2981 rsautosales@yahoo.com</p> <p style="text-align: center;">Check Our website for our wide Variety on 4x4 Trucks - Cars - Mini Vans - Handicap Vans - SUV Motorhomes & Much More!</p>		<p>85,521 Miles \$35,900</p> <p>'13 GMC Sierra 2500HD Denali 6.6L Duramax Turbo Diesel, 4x4, Allison Trans, Camera, Sunroof, Leather, DVD</p>	<p>Miles \$28,900</p> <p>'13 Toyota Hilux SR, 3.0L V6 4x4, 5 Spd Manual, Turbo Diesel, Double Cab, Leather Interior, Rust Free, Excellent Shape</p>
<p>176,191 Miles \$19,900</p> <p>'06 Dodge Ram 3500 Laramie 5.9L Cummins Diesel, 2WD, Auto, Dually, Crew Cab, Leather, 5th Wheel Hitch</p>	<p>Clear Title \$19,900</p> <p>'05 Ram 2500HD 5.9L Cummins Diesel, 4x4, Auto, Quad, Longbed, NEW ENGINE & TRANSMISSION</p>	<p>Local Trade \$7,900</p> <p>'03 Chevy Silverado 2500HD 6.6L V8 Duramax Diesel, 4x4, Allison Trans, Ext Cab, Leather Interior, Normal Wear</p>	<p>128,063 Miles \$15,900</p> <p>'11 GMC Canyon SLE 3.7L 5 Cyl, 271 4x4, Crew Cab, Auto, Cloth Interior, Southern Truck, Rust Free</p>	<p>76,589 Miles \$15,900</p> <p>'07 Dodge Ram Mega Cab 5.7L V8 Hemi Engine, Auto, Mega Cab, Cloth Interior, Fender Flares, Sharp!</p>	<p>159,822 Miles \$15,900</p> <p>'08 Chevy Silverado 1500, 5.3L Engine, 4x4, Auto, Ext Cab, Aluminum Flatbed w/LED Lights, Cloth Interior</p>
<p>161,829 Miles \$12,900</p> <p>'09 Chevy Avalanche LTZ, 5.3L Engine, 4x4, Auto, Sunroof, Heated Leather, Park Assist Sensors, Remote Start</p>	<p>88,239 Miles \$15,900</p> <p>'05 Toyota Tundra SR5 4.7L V8, 4x4, Auto, Gas, Double Cab, Cloth Interior, Rust Free</p>	<p>107,589 Miles \$9,900</p> <p>'06 Nissan Frontier LE 4.0L 6 Cyl, Gas Engine, 4x4, Crew Cab, Cloth Interior</p>	<p>127,615 Miles \$8,900</p> <p>'08 Ford Ranger 4.0L 6 Cyl, Auto, Gas, Cloth Interior, Flares, Rust Free, Normal Wear</p>	<p>185,457 Miles \$8,900</p> <p>'07 Chevy GMT-400 K1500 5.7L 4x4, Auto, Gas, Regular Cab, Shortbed, Cloth Interior, Normal Wear</p>	<p>185,457 Miles \$4,900</p> <p>'07 Ford F600 Grain Truck 8 Cyl Gas Engine, 5 Spd Manual, 4x2 Spd Rear End, Normal Wear, Runs & Drives</p>
<p>79,399 Miles \$39,900</p> <p>Handicap, 4x4</p> <p>'14 Ford Econoline E350 SD, 6.8L V10, 4x4, Auto, Gas, VMI Conversion Handicap Van, Vinyl Seats, Rust Free, Texas Van</p>	<p>87,589 Miles \$14,900</p> <p>'15 Jeep Renegade Latitude 2.4L 4 Cyl, Auto, Gas, Camera, Leather Interior, Rust Free, Sharp!</p>	<p>128,520 Miles \$7,900</p> <p>'15 Honda FIT LX 1.5L 4 Cyl, Auto, Gas, Hatchback, Cloth Interior, Rust Free, Clean</p>	<p>41,950 Miles \$8,900</p> <p>'15 Nissan Versa Note 1.6L Engine, FWD, Auto, Hatchback, Cloth Interior</p>	<p>44,895 Miles \$10,900</p> <p>'15 Kia Soul+ 1.6L 4 Cyl, FWD, Gas, Auto, Leather Interior, Rust Free, Extra Clean</p>	<p>182K Miles \$5,450</p> <p>'11 Ford Fiesta SES 1.6L 4 Cyl FWD, Manual Transmission, Gas, Hatchback, Cloth Interior, Sharp!</p>
<p>76,848 Miles \$18,900</p> <p>Handicap Van</p> <p>'13 Dodge Grand Caravan SXT, 3.6L 6 Cyl, Gas, Auto, Handicap Van, Wheelchair Ramp, Cloth Interior, Pwr Sliding Doors</p>	<p>149,282 Miles \$13,900</p> <p>'14 GMC Acadia SLT 3.6L 6 Cyl, Auto, Gas, 3rd Row, Camera, Leather, Touch Screen, DVD</p>	<p>Local Trade \$9,900</p> <p>'13 Buick Enclave, 3.6L AWD, Auto, Gas, Sunroof, Leather, 3rd Row Seating, Camera, Touchscreen, Excellent Condition, Super Clean</p>	<p>143,348 Miles \$16,900</p> <p>'12 GMC Yukon XL Denali 6.2L AWD, Auto, Gas, Sunroof, Camera, Leather, Rear Entertainment, Loaded!</p>	<p>58,184 Miles \$13,900</p> <p>'12 Jeep Liberty Jet Ltd 3.7L V6, 4x4, Auto, Sunroof, Heated Leather, Touch Screen, Navigation, Loaded</p>	<p>188,795 Miles \$12,900</p> <p>'11 Jeep Wrangler Unltd Rubicon 3.8L 4x4, Auto, 4 Dr Unltd, Cloth Interior, Destructive Title, Runs & Drives</p>
<p>28,955 Miles \$27,900</p> <p>California Van</p> <p>'10 Chevy Express G3500 LT 6.0L V8, Auto, Gas, 12 Passenger, Cloth Interior, California Van</p>	<p>114,280 Miles \$9,900</p> <p>'11 Dodge Nitro Heat 3.7L 6 Cyl, 4x4, Auto, Sunroof, Cloth Interior, Sirius XM, Bluetooth, Sharp!</p>	<p>103,148 Miles \$9,900</p> <p>'10 Jeep Liberty Ltd 3.7L 6 Cyl, 4x4, Auto, DVD Player, Navigation, Touchscreen, Sunroof, Leather</p>	<p>111,826 Miles \$9,900</p> <p>'10 Chevy Equinox LS, 2.4L 4 Cyl, AWD, Auto, Cloth Interior, Remote Engine Start, Arizona Vehicle, Rust Free</p>	<p>168,282 Miles \$5,900</p> <p>'09 Chevy Equinox Sport 3.6L 6 Cyl, All Wheel Drive, Auto, Gas, Leather Interior, Extra Clean</p>	<p>148,152 Miles \$4,900</p> <p>'08 Chevy Equinox LS 3.4L 6 Cyl, FWD, Auto, Gas, Pwr Windows & Locks, Normal Wear, Local Trade</p>
<p>156,974 Miles \$19,900</p> <p>AUG 2017</p> <p>'17 Chevrolet Express G3500 LT V8 Engine, Flex Fuel, Auto, 15 Passenger, Cloth Interior, Missing Rear Seats</p>	<p>119,548 Miles \$7,900</p> <p>'08 Dodge Nitro SLT 3.7L 6 Cyl, AWD, Auto, Leather Interior, Sharp!</p>	<p>120,598 Miles \$6,900</p> <p>'07 Nissan Murano SL 3.5L 6 Cyl, FWD, Auto, Gas Engine, Heated Leather, Camera, Sharp!</p>	<p>168,220 Miles \$6,900</p> <p>'06 GMC Envoy Denali 5.3L V8, 4x4, Auto, Sunroof, Leather, 3rd Row, 7 Passenger</p>	<p>129,119 Miles \$3,900</p> <p>'06 Saturn Vue 2.2L 4 Cyl, FWD, Auto, Gas, Cloth Interior, Local Trade, Clean Title</p>	<p>86,086 Miles \$5,900</p> <p>'05 Nissan Murano SL 3.5L 6 Cyl, AWD, Gas, Auto, Sunroof, Cloth Interior, Steering Wheel Controls</p>
<p>43,184 Miles \$25,900</p> <p>California Vehicle</p> <p>'14 Ford Econoline E350 SD 5.4L V8, RWD, Auto, Flex Fuel, 15 Passenger, Cloth Interior</p>	<p>94,006 Miles \$9,900</p> <p>'08 Ford Explorer Eddie Bauer 4.0L AWD, Auto, 3rd Row, Sunroof, Leather, DVD Player, Rust Free</p>	<p>195K Miles \$6,900</p> <p>'04 GMC Yukon 1500 5.3L V8, 4x4, Auto, Gas, 3rd Row Seating & Pass, Cloth Interior</p>	<p>Local Trade \$3,900</p> <p>'06 Chevy Trailblazer XL Auto, Gas, 4x4, 3rd Row Seating, Cloth Interior, Runs & Drives</p>	<p>107,878 Miles \$10,900</p> <p>'14 Buick LaCrosse CXL 3.6L 6 Cyl, Gas, Auto, Camera, Leather, Touch Screen, Loaded</p>	<p>138,082 Miles \$5,900</p> <p>'08 Buick LaCrosse Super Series 5.3L V8 Gas Engine, Auto, Sunroof, Leather Interior, Sharp!</p>
<p>105,824 Miles \$19,900</p> <p>'16 Chevy Express G3500 LS 6.0L V8, RWD, Flex Fuel, 15 Passenger Van, Auto, Vinyl Seats</p>	<p>86,148 Miles \$9,900</p> <p>'15 Nissan Sentra SR 1.8L 4 Cyl, Gas Engine, Auto, Cloth Interior, Extra Clean, Rust Free</p>	<p>83,479 Miles \$8,900</p> <p>'14 Nissan Sentra SV 1.8L Engine, Auto, Sedan, Cloth Interior, Eco & Sport Mode System, Extra Clean</p>	<p>138,031 Miles \$7,900</p> <p>'13 Chevy Impala LTZ 3.6L 6 Cyl, FWD, Auto, Sunroof, Spoiler, Leather Interior, Sharp!</p>	<p>178,852 Miles \$7,450</p> <p>'12 Kia Optima LX GDI 2.4L 4 Cyl, FWD, Gas Engine, Sedan, Auto, Cloth Interior, Loaded</p>	<p>118,636 Miles \$5,900</p> <p>'07 Pontiac G6 GTP 3.6L 6 Cyl, FWD, Auto, Coupe, Cloth Interior, Sunroof, Sharp!</p>
<p>79,563 Miles \$12,900</p> <p>'16 Dodge Grand Caravan SXT 3.6L 6 Cyl, Auto, Stow-N-Go Seats, 7 Passenger, Black Cloth Interior</p>	<p>148,272 Miles \$4,450</p> <p>'07 Dodge Caliber SXT 2.0L 4 Cyl, Auto, FWD, Gas, Station Wagon, Normal Wear</p>	<p>157,762 Miles \$3,600</p> <p>'06 Chevy HHR LT 2.4L 4 Cyl, FWD, Auto, Gas, Hatchback, Cloth Interior, Extra Clean</p>	<p>134K Miles \$4,900</p> <p>'04 Subaru Legacy Outback AWP 2.5L 4 Cyl, AWD, Auto, Gas, Hatchback, Cloth Interior</p>	<p>100,728 Miles \$4,450</p> <p>'00 Pontiac Sunfire GT 2.4L Engine, Auto, 2 Dr Convertible Soft Top, Cloth Interior, Excellent Shape</p>	<p>94,808 Miles \$3,450</p> <p>'97 Chrysler LHS 3.5L 6 Cyl, Auto, Leather Interior, Normal Wear, Local Trade</p>

Warranty • 319-696-2981 • Warranty • www.rsautosalesinc.com • Warranty • 319-696-2981 • Warranty • 319-696-2981

Automobiles

2013 Dodge Avenger, black, 4 cylinder, 160,000 miles. New battery, runs good, \$4750.00 or best offer. LaBelle, MO, 573-470-0705.

Auction Sales

FIND THE PERFECT PET FOR THE PERFECT PRICE IN THE PERFECT PLACE FOR DEALS

Find your next fluffy, feathered or furry friend in your local newspaper classifieds!

LINN COUNTY, MISSOURI LAND & EQUIPMENT AUCTION

SATURDAY, MARCH 5 • 10:30 A.M.

AUCTION TO BE HELD ONSITE: 28709 JEWELL RD., ST. CATHARINE, MO

81 ACRES± Selling In 2 TRACTS

FARM REPRESENTS IMPROVED PASTURELAND, 2-BD, 1BA COUNTRY HOME, PREMIER HUNTING

The Bradley farm is located approximately 5.5 miles northeast of Brookfield, MO in Section 22 T58N-R19W of Yellow Creek Township, Linn County, MO. From Brookfield, MO take Highway 11 north approximately 2.5 miles to Jewell Road, then head north on Jewell Road for 3 miles to farm.

Mark your calendars now for this upcoming Linn County, Missouri land and equipment auction. Located just outside of Brookfield, Missouri sits this nice 81 acre ± farm. Only a handful of times a year does a tract this size show up on the open market with this much diversity. Perfect acreage to start your hobby farm, country living, recreation, deer and turkey habitat, incredible build site options, a flowing creek bottom on the property and stocked ponds. We look forward to your participation in this upcoming Linn County, MO land and equipment auction.

EQUIPMENT HIGHLIGHTS: '14 Massey Ferguson 4610 tractor, MFWD, cab, heat, air, 678 hrs., w/ DL260 loader; Rhino TS12 Stealth Flex-Wing Rotary Cutter, 540 pto; Rhino PT207 hay tedder; 6' tandem disc; 5 ton creep feeder w/ gates; Rhino H300 hyd. auger; Powder River head gate; 500 gal. propane tank; livestock equipment, steel, shop tools, and much more!

ADDITIONAL DETAILS, MAPS, & PHOTOS ONLINE AT: www.TeterAuction.com

RODGER & CATHERINE BRADLEY

TETER AUCTION COMPANY, LLC
 FOR ADDITIONAL INFORMATION, CONTACT:
 Joshua Teter: (660) 963-2461
 David May: (660) 973-9523
www.teterauction.com

Cairo Farm Equipment & Personal Property Auction

Saturday March 5th, 2022 at 10:00 a.m.

The Late Tom Phillips

Directions to auction location: 6558 Highway DD, Cairo, Missouri. From US Highway 24 West in Moberly turn North on State Highway DD for approximately 5.8 miles to the auction location or follow Route Z in Cairo to the end and turn left on Highway DD for 1.8 miles to the auction location on the left. Watch for signs the day of the sale.

Farm Equipment and Trailers: 2018 Kubota SVL 95-25 444 hrs, Voyager camera, heat, a/c, radio; John Deere 6430 with 673 self leveling bucket, 6055hrs, left hand reverser, heat, a/c, radio, very clean, well taken care of tractor; 48" pallet forks; approximately 4 ton grain bin with auger; EZ Puller tree puller; Bison 3 point, 3 way hydraulic 8' blade; 3 point bale carrier; skid loader, 3 spike bale loader; skid loader 2 pike bale loader; 3 point bale unroller; Bob Cat post hole digger; 2', 15" and 12" augers sold separately; LOTS MORE.

Miscellaneous Livestock Equipment: Sucker rod; 2" x 2" square tubing; 2 1/2" pipe with threaded ends; older hedge posts; cattle feeders need some work; 10' gates, 16' gates; 14' portable cattle chute; 30 10' corral panels sold per piece; 8' x 16' portable dog/chicken pen with wire mesh floor; Diamond Deluxe 3 hole dog box; LOTS MORE.

Tools and Outdoor Equipment: 2021 Gravely Protrum 460, 52 hrs, zero turn, Kawasaki motor; Hitachi air compressor; drawer heavy duty cabinet; motorized antique brush cutter and saw; various ladders; antique corn sheller; Polar yard cart; Pit boss smoker; torch set; Maxx air fan; 1,500 BTU portable heater; LOTS MORE.

Hunting & Personal Items: 10' x 10' pop up canopy; leather leggings/chaps; riding spurs; 60" x 60" x 70" pop up blind; tri-pod shooting; shooting sleds; tactical synthetic receiver; fun cleaning kits; reloading supplies, 44 special, 45 automatic, 357, 22-250, 44 mag; size 9 hunting boots; like new Mission crossbow with scope; LOTS MORE!

Household Items: Maytag chest freezer; Kenmore chest freezer; love seat, recliner; Samsung gas range, like new; Maytag portable dishwasher; Whirlpool stainless steel, side by side, refrigerator/freezer; 45" oak antique table with 6 oak chairs; oak curved front curio cabinet; oak buffet; oak roll top desk; LOTS MORE!

Antiques & Collectibles: Antique push plow; antique cross cut saw; Union ca-boose antique wood stove; antique console style AM radio; antique hove chest; several Charles Freitag print "Bumper Crop"; Terry Redlin "Morning Glow"; lightening rod globe; barn lantern; antique fan; military carpenter box

There will be many more items at this auction too numerous to mention.

SCOTT'S AUCTION SERVICE

573-356-4405

Michael Cunningham 660-651-2288 • Paxton Pittman 660-346-1956
WWW.SCOTTSAUCTIONSERVICE.COM

PUBLIC AUCTION

JOLEEN AND ROGER EDWARDS
 DATE: **SATURDAY FEBRUARY 26, 2022**
 TIME: **9:00A.M.**
 LOCATION: **WINIGAN STATION 33258**
HIGHWAY 129 WINIGAN MO 63566

Power King Trailer Tires: 2-ST235/80R16, 1-ST225/90R16, 2-ST225/75R15, 2-ST205/75R15, 2-ST205/75R14

FUEL TANKS: 2- 1,000-gallon tanks, 1-2,000-gallon tank, 2-diesel pumps, 1- gasoline pump.

SNAP-ON TOOLS: Full set of open and box in wrenches, 1/2", 3/8", 1/4" deep well sockets, ratchets and braker bars.

MISC TOOLS: Oxygen and sedaline torch w/cart, 4- 1/2" impact guns, several sets of Craftsman sockets and wrenches, Craftsman 9 drawer tool box- 51x16, 2 large floor jacks, transmission jack, tool cabinet, new electric Hobart welder, A/C tools- Robinair vacuum pump, hoses/gauges, Intella sensor, 2-sets of ball joint presses, soldering gun, auto scanner pro, miscellaneous special sockets, axels, hubs, serpentine belt tension tool, cooling system pressure tester, 2-over ring assortment kits, 2- Lincoln air grease guns, impact chisel, 2- hand grinders, disc brake caliber tool, brake line flaring tool, heat gun, fuel pressure tester, bead breaker for tractor tire, vacuum pump, TPMS diagnostic tool/tire tensor, 2-elec saw saw, 122" Allen impact wrenches, 1/2" deep sockets, bed liner parts-paints, electrical wiring tool box-full of wire and splices, lots of miscellaneous tool sets.

MISCELLANEOUS: Showcase of many mini light bulbs, 25 sets of wiper blades, 4 new Interstate batteries.

MFA OILS: 8 gallon of antifreeze, 8 bottles of brake flood, 9 cases of synthetic oil, 6 cases of synthetic blend oil, 3 cases of 30 weight heavy duty engine oil, 5 gallon gear oil, 10 bottles of tire sealant, 3 jugs of DEF, 2 jugs of bar & chainsaw oil, 10 bottles of 2 cycle oil, 4 cases of MFA grease tubes, misc. fuel treatments, 1 case of Howes, 60 fuel and oil filters.

SHOP EQUIPMENT: Lanair oil furnace tank, burner, blower assembly, Ingersoll Rand 5 horse air compressor w/ 80-gallon tank-like new, LG air conditioner heater, Hunter electronic tire balancer, tire machine-like new, tire repair bench, lots of new tire tubes & weights, tire repair tools, battery charger, 2 bulk oil tanks, bead buster.

OFFICE EQUIPMENT: Cash register, calculator, file cabinet, upright refrigerator freezer, small chest type freezer-like new,

GUNS: Remington 870 .410-like new, Remington 870 .12-gauge 2 extra barrels, Remington 870 20-gauge w/1 extra barrel, very old Savage .22, very old Western Auto bolt action 22, New Savage 93 .17, Beretta .25 automatic w/shells, Savage #24 over/under .223 12-gauge, Rossi pump .22, Glock 19 9mm w/extra magazine; 2 .14 round clips w/shells and holster, several gun cases. There will be a few more guns & ammo day of auction!

GUNS WILL BE AUCTIONED OFF AT 9:00 A.M.

AUCTIONEERS NOTE: This is a partial listing! There will be many more items on sale day. Roger says it is time to retire and all his items are in excellent condition! Everything will be sold!

STATEMENT DAY OF AUCTION TAKES PROCEDURE OVERRITTEN AD

JEFFRIES AUCTION SERVICE

DANNY JEFFRIES
 HOME (660)-874-4590 CELL (660)-342-1075



"ROCK RIDGE SADDLES & TACK"

****BRING ON SPRING****

TACK AUCTION
MAKE PLANS TO ATTEND!!

SATURDAY, FEBRUARY 26, 2022

KIRK WATSON 573-406-5389
 Auction Location: SESQUI BUILDING
 @ FLOWER CITY PARK

621 JOHNSTON AVE, PALMYRA MO

****DOORS OPEN AT 3PM, AUCTION STARTS AT 5PM****


Large selection of saddles,
 tack, home décor & much more!
 Something for every cowboy/cowgirl, take a break from
 the winter weather, socialize & shop for spring riding!
****ALL NEW ITEMS TO SELL****

INDOOR & CLIMATE CONTROLLED
 ****CONCESSIONS SERVED ****

CASH, CHECK (WITH ID) & MAJOR
CREDIT/DEBIT CARDS ACCEPTED

SHOPPING MADE EASY.....BRING YOUR FAMILY &
 FRIENDS ANYTHING & EVERYTHING FOR THE COW-
 BOY/COWGIRL!!

VISIT our Facebook page
ROCK RIDGE SADDLES AND TACK
 for more info, listings & updates!
 Join our Facebook event page
BRING on SPRING TACK AUCTION for updates!



LaPlata Farm Equipment Auction

Huge Auction!! 2 Rings running ALL DAY!!

Saturday, March 12, 2022 at 10:00 a.m.
James West III Estate

Directions to auction location: 29274 Highway 63, LaPlata, Missouri. Follow US Highway 63 approximately 2 miles North of LaPlata to the auction location on the right side of the road. Watch for signs the day of the sale. *This will be a large auction with 2 rings running most of the day, so please come prepared.*

Tractors, Trucks, Trailers, Construction and Farm Equipment will be sold live and online beginning at noon.

Combines and Grain Trucks: Gleaner R55, one owner, Cummins engine, 744 sep hours, 1.170 engine hours, 4WD, 30.5x32 drives, 16.9x26 rears;

Tractors: 1999 White 8310 FWA, Cummins engine, 3,400 hours, 3 point, triple remotes, 18.4x42 duals; White Field Boss 4-210, Cat 3208 with factory turbo, 4,300 hours, 3 point dual remotes, 18.4 x38 duals; White 170 work-horse, Cummins engine, 3,000 hours, air ride seat, 3 point triple remotes, 18.4x42 duals; White Field Boss 2-105, estimated 6,600 hours, new tac, 3 point,

Farm Equipment: Kinze 3500 center pivot 8/15 planter with monitor; John Deere 1590 drill, one owner with yetter markers; Sunflower 22? Danish time field cultivator with 4 bar harrow; Krause 21? disk with 9? spacing; Demco 550 grain cart with Shurco rollover tarp,

Construction Equipment: Case 580 Super K backhoe, Cummins engine, 2WD, 3,900 hours, left hand reverser, clamshell bucket; Cat D5 dozer, 3 speed power-shift, hydraulic tilt, hours unknown, comes with new set of pads on pallet; 1969 Allis Chalmers Hy-dro forklift


Vehicles, Trailers and Boats: Ford Model A; 2000 Ford F250, 5.4L, automatic, 4x4, 148,000 miles, gooseneck hitch, comes with tool box and fuel transfer tank;

Tools and Outdoor Equipment: ExMark Lazer Z, zero turn, 60? deck, 354 hours, Kawasaki engine; Allis Chalmers 716H hydrostat riding mower; Campbell Hausfield 60 gallon air compressor; Century 70 wire welder; Milwaukee angle grinder; Makita angle grinder; miscellaneous welding supplies;

Collectibles: Massey Ferguson double sided light up sign from Burkhardt Bros in Clarence; Oliver horse drawn sickle mower; #2 cast iron dinner bell

Portable Canopies and Storage: 8'6? tall x 18? wide x 30? long canopy; 12'6? tall x 12? wide x 30? long canopy; 8? x 10? x 12? portable shed; several enclosed box truck beds in various conditions

There will be many more items at this auction too numerous to mention.



SCOTTY'S

AUCTION SERVICE

573-356-4405

Michael Cunningham 660-651-2288 • Paxton Pittman 660-346-1956
WWW.SCOTTYSAUCTIONSERVICE.COM



FIND THE
RIGHT RIDE
 FOR THE
RIGHT PRICE

*Find the stuff you want.
 Sell the stuff you don't.
 Save time and money with
 the newspaper classifieds!*



AECI LAND, LLC

AECI Land has approximately 400+ acres of tillable land for lease to the highest bidder. The land will be offered in three tracts. All tracts lay in Chariton County near Prairie Hill, Mo. Please contact AECI Land listed below to receive more information. All bids due by 2:00 p.m. March 7th ,2022.

Dallas Sandner
 Land Agent
 Associated Electric Cooperative, Inc./AECI Land, LLC
 4297 Hwy. F Clifton Hill, Mo. 65244
 Tel: 660-261-3327 Cell: 660-651-2073
 E-Mail: dsandner@aeci.org

Machinery Auction

Thursday, March 24 * 10a.m.

Selling Farm & Commercial Equipment:

Tractors, trailers, trucks, skid loaders, construction equipment/supplies, lawn & garden, ATVs, hay & tillage equipment, livestock equipment, fencing supplies and much more.

CONSIGN NOW
WHILE THE MARKET IS STRONG!

Call the barn or Frankie at 660-651-4040

Consignor checks printed the day of the sale.
 Trucking Available.

Lolli Livestock Market, Inc.
Macon, Mo 660-385-2516



FIND THE
PERFECT PIECE
 FOR THE
PERFECT PRICE

*Find the stuff you want and sell the stuff
 you don't in the newspaper classifieds!*



SPACE AVAILABLE

*Ask about our
 advertising rates
 to fit any budget!*

PUBLIC AUCTION

We will sell the following items for the Late Tom Phillips Estate, Bobbi Hogenson, & Delbert Sivert located at CHRISTY'S AUCTION BARN, 126 E. SANDERS, LA PLATA, MO on

WEDS. EVE, FEBRUARY 23RD, 2022 @ 5 P.M.

COMIC BOOKS & BASEBALL CARD COLLECTION FROM LATE TOM PHILLIPS ESTATE: One hundred & two (102) 10 & 12 cent comic books consisting of twenty-six (26) Superman, Lois Lane, Jimmy Olsen, Superboy, Batman, Bat Girl, First Appearance, Detective Comic, The Lone Ranger, Three Stooges, & many more. **BASEBALL CARDS & MEMORABILIA** – Such as approximately sixty (60) lots of unopened boxes of baseball cards – one (1) complete case of 1988 unopened baseball cards – large assortment of old baseball cards in trays & albums w/players such as Stan Musial, Hank Aaron, Mickey Mantle, Roberto Clemente, Willie Mays, and many more – miscellaneous 1954 sports cards – various Bobbleheads – 1967 World Champion beer steins – Mark McGuire baseball – replica World Series rings St. Louis 1964, 1967, 1982 – two (2) 1946, – two (2) 1926, & 1985 – Cardinals Journal Book – lots of other Cardinal memorabilia too numerous to mention. **STAMPS:** Two (2) books of 13-23 carat gold stamps – 1978 First Day Stamp Cover – box of stamps one (1) cent and up – bag of documents from 1858 thru 1897. **GUNS & AMMO TO SELL AT 8 P.M. FROM BOBBI HOGENSON & DELBERT SIVERT** – **FFL PAPERWORK DONE ONSITE DAY OF AUCTION ON SOME GUNS:** Remington Model 1100 automatic 3" mag w/26" improved cylinder, vent rib, 12 ga., extra barrel, 30" full w/vent rib – Mossberg 12 ga, 2 3/4" & 3" pump Model 500A w/24" vent rib barrel w/choke tubes camo paint – Winchester Model 50, 12 ga, 2 3/4" auto shotgun w/28" modified steel barrel – Winchester Model 12, 12 ga, 30" barrel, 3" chamber, Polly choke – Winchester Model 67, single shot, 22 cal., LLR bolt action – Springfield Jay Stephens Arms Co. 410 single shot, 3" chamber, 26" barrel – Henry Repeating Arms Co. lever action, 22 cal., LR w/Tasco 4x32 scope – Hopkins & Allen 12 ga single shot 2 3/4" – black powder 12 ga w/ramrod – Richards-Landon double trigger inlaid w/white star & shield in stock – Golcher black powder heavy barrel rifle w/ramrod set trigger (cal. unknown) – very nice Thompson Center plates – J Keller black powder wall hanger w/bullet pocket in stock. **AMMO:** Large assortment of 12, 20, 410 ga. shells of various sizes & shot – rifle shells of various sizes such as 38 sp, 223 Rem., 30-40 Krag, 45 cal., 22 cal., 30-06, 30-30, 6mm, miscellaneous hunting knives, duck & goose calls, hunting supplies, gun cleaning equipment, gun cases, and various other items too numerous to mention. **AUCTIONEER'S NOTE:** Please plan to attend this very interesting & lengthy auction. **TERMS: Cash/Check w/ID - Lunch on Grounds**

Christy's Auction Service

La Plata, MO 63549 660-341-4531
 See Website for Photos: www.dchristyauctions.com
 & Christy's Auction Service on Facebook & AuctionZip.com
 Auctioneers – David Christy 660-341-4531
 Jason Wood – 660-341-7884 Greg Smoot – 660-341-5175

Public Auction

2705 Main St. • Unionville, MO
February 26th • 10 am

Vehicle: 2003 Dodge Dakota 2wd, John Deere S82 riding mower. **HVAC/Plumbing:** we will be selling a large amount of supplies from a gentleman retiring to include: hvac ductwork and insulation, 100 ft roto roter, trash pump, several boxes of pvc pipe fittings, plumbing supplies, pex, pex unroller, rigid pipe threaders, rigid cutters, yellow jacket swagger and tube bender, Makita cut out tool, electrical boxes, breakers, and more. **Shop/Tools:** scaffolding, welder on trailer, commercial size car jack, 260 gal water totes, 12 ft fiberglass ladder 16 ft aluminum ladder, step ladder, redy heater, shop vacs, gas cans, car ramps, drywall sprayer, Poulan chainsaws, battery chargers, concrete tools, bull float with long handle, dollies, 20 lb gas cylinders, welding table, several hand and power tools. **Household:** 36" flat screen tv, 2 refrigerators, prints, seasonal items, chicken decor, house decor, knick knacks, white mountain ice cream freezer, beds, dressers, shelves, lots of kitchen items, cleaning supplies, coolers, dehumidifier, linens, blankets, books, glassware, several boxes full of miscellaneous, we have not been through everything yet, there will be some antiques as well. Indoor sit down style auction in a heated building. Preview from 2 to 5 pm on February 25th. Food and restrooms available. Check out pictures on our Facebook page.



AAA
ALTISER
 AUCTION & APPRAISAL
 KRIS ALTISER
 660-626-4960

SEE OUR FACEBOOK PAGE FOR PHOTOS

NEMMO

Trader

Our circulation is 11,000 with a 20 county coverage area in Missouri, Iowa and Illinois. Our paper is a free paper and is distributed to restaurants, convenience stores and other businesses in the area for individuals to pick up. We have a new issue every Friday.



**Now offering Inserts
Call Cindy @
660-665-8500 for rates**

TOWN	STATE	COUNTY	TOWN	STATE	COUNTY
Quincy	Illinois	Adams	Marceline	Missouri	Linn
Carthage	Illinois	Hancock	Purden	Missouri	Linn
Hamilton	Illinois	Hancock	Browning	Missouri	Linn/Sullivan
Centerville	Iowa	Appanoose	Atlanta	Missouri	Macon
Cincinnati	Iowa	Appanoose	Bevier	Missouri	Macon
Moravia	Iowa	Appanoose	Callao	Missouri	Macon
Unionville	Iowa	Appanoose	LaPlata	Missouri	Macon
Bloomfield	Iowa	Davis	Macon	Missouri	Macon
Drakesville	Iowa	Davis	New Cambria	Missouri	Macon
Ft. Madison	Iowa	Lee	Hannibal	Missouri	Marion
Hwy 2	Iowa	Lee	Palmyra	Missouri	Marion
Keokuk	Iowa	Lee	Taylor	Missouri	Marion
Montrose	Iowa	Lee	West Quincy	Missouri	Marion
Brashear	Missouri	Adair	Madison	Missouri	Monroe
Kirksville	Missouri	Adair	Monroe City	Missouri	Monroe
Novinger	Missouri	Adair	Pais	Missouri	Monroe
Alexandra	Missouri	Clark	Livonia	Missouri	Putnam
Kahoka	Missouri	Clark	Unionville	Missouri	Putnam
Wayland	Missouri	Clark	Moberly	Missouri	Randolph
Galt	Missouri	Grundy	Downing	Missouri	Schuyler
Laredo	Missouri	Grundy	Lancaster	Missouri	Schuyler
Trenton	Missouri	Grundy	Queen City	Missouri	Schuyler
Baring	Missouri	Knox	Arbela	Missouri	Scotland
Edina	Missouri	Knox	Memphis	Missouri	Scotland
Knox City	Missouri	Knox	Rutledge	Missouri	Scotland
Canton	Missouri	Lewis	Clarence	Missouri	Shelby
Ewing	Missouri	Lewis	Hunneywell	Missouri	Shelby
Labelle	Missouri	Lewis	Shelbina	Missouri	Shelby
Lewistown	Missouri	Lewis	Green City	Missouri	Sullivan
Brookfield	Missouri	Linn	Milan	Missouri	Sullivan
Bucklin	Missouri	Linn			
Linneus	Missouri	Linn			



McAfee Auction Service, LLC
375 S Johnson • Kahoka, MO
660-727-3796
www.mcafeeauctionservice.com

UPCOMING LAND AUCTIONS

KNOX COUNTY LAND AUCTION

96+/- Acres
2 TRACTS
LIVE ONSITE ONLY AUCTION
THUR, FEB 24TH - 1 PM
CROPLAND • BUILDING SITES
SALE CONDUCTED AT THE QUEEN OF PEACE HALL (103 W. CLOW AVE, EWING)
TONY AND TERRI JENNINGS, SELLERS

LEWIS COUNTY LAND AUCTION

40+/- Acres
1 TRACT
LIVE ONSITE ONLY AUCTION
THUR, FEB 24TH - 2 PM
HIGHLY PRODUCTIVE CROPLAND
SALE CONDUCTED AT THE QUEEN OF PEACE HALL (103 W. CLOW AVE, EWING)
DENNIS MCCUTCHAN, SELLER

CLARK COUNTY LAND AUCTION

49+/- Acres
2 TRACTS
LIVE ONSITE ONLY AUCTION
TUES, MARCH 1ST - 6 PM
CROPLAND • TIMBER
SALE CONDUCTED AT THE CARE BUILDING (451 N. VINE ST. KAHOKA)
CHAD AND ANGELA STRICKLER, SELLERS

LEWIS COUNTY LAND AUCTION

217+/- Acres
2 TRACTS
LIVE ONSITE ONLY AUCTION
TUES, MARCH 8TH - 6 PM
CROPLAND • HUNTING
SALE CONDUCTED AT THE CALDWELL BUILDING (30191 MO-16 CANTON)
JAMES & DARLENE SPENCER TRUST

CLARK COUNTY LAND AUCTION

194+/- Acres
2 TRACTS
LIVE ONSITE ONLY AUCTION
FRI, MARCH 18TH - 6 PM
CROPLAND • TIMBER
SALE CONDUCTED AT THE CARE BUILDING (451 N. VINE ST. KAHOKA)
THE FAMILY OF VINCENT J. BRIGGS, SELLERS

MARION COUNTY LAND AUCTION

56+/- Acres
2 TRACTS
LIVE ONSITE ONLY AUCTION
TUE, APRIL 5TH - 1 PM
4+ BEDROOM HOME
SALE CONDUCTED ON SITE (3858 CO RD 183, PALMYRA, MO)
JOYCE & THE LATE GRANT HESS, SELLERS

COMPLETE DETAILS ONLINE
WWW.MCAFEEAUCTIONSERVICE.COM



McAfee Auction Service, LLC
375 S Johnson • Kahoka, MO
660-727-3796
www.mcafeeauctionservice.com

COMMERCIAL REAL ESTATE AUCTION

THURS FEB 24TH - 10 AM

Sale conducted onsite located at 100 South Washington Street, Monticello, MO



VIEWING ONE HOUR PRIOR TO SALE

This conveniently located 1542 sq' building sits across the street from the Lewis County Courthouse. The multi-purpose structure was built in 2002 and features a kitchenette/breakroom, bathroom, storeroom, utility room, and 2 spacious rooms. Building has a N.G. forced air furnace, central air, electric water heater, 250-amp electric service and conveys with a Cummins powered generator. Lot Size: 16,498 sq' surveyed tract (see survey online). Utilities: rural water, city sewer.

LEWIS COUNTY EMERGENCY 911, SELLERS



McAfee Auction Service, LLC
375 S Johnson • Kahoka, MO
660-727-3796
www.mcafeeauctionservice.com

TIMED ONLINE ONLY ANNUAL SPRING MACHINERY AUCTION

THURSDAY MARCH 22ND
LOTS START ENDING AT 10 AM

CONSIGN NOW!

CONSIGNMENTS ACCEPTED NOW
UNTIL SATURDAY, MARCH 12TH

NOW TAKING CONSIGNMENTS OF: TRACTORS, COMBINE, CONSTRUCTION EQUIP., PLANTING, HAY & TILLAGE EQUIP., SHORT LINE EQUIP, LIVESTOCK EQUIP., FARM SUPPORT ITEMS, TRUCKS, CARS, TRAILERS, RTVS, LAWN & GARDEN EQUIP.

CALL 660-727-3796

ITEMS WILL BE LOCATED AT
THE CLARK COUNTY FAIRGROUNDS (KAHOKA, MO)
FOR VIEWING CLOSER TO SALE DATE

ADDITIONAL DETAILS,
PHOTOS & AUCTIONS
AVAILABLE ONLINE!

WWW.MCAFEEAUCTIONSERVICE.COM

THINKING OF SELLING LAND OR MACHINERY?

LET OUR MOTIVATED STAFF WORK FOR YOU!

MONTY: 660-341-7412

OFFICE: 660-727-3796

LARGE PUBLIC AUCTION

SATURDAY 10 A.M. FEBRUARY 26 2022
30006 HWY 129 New Cambria MO 63558

As we have sold the ranch we will sell the following at Public Auction. AUCTIONEERS NOTE: Very nice selection of farm and cattle equipment along with very nice log furnishings and antiques from the lodge check out missourilandandfarm.com for photos. Lots of unlisted items come see what we find!

TRACTORS, SKID LOADER, ATTACHMENTS: JD 7330 premium, MFWD, 2,800 hrs - JD 6125R, MFWD, H340 loader, 2,300 hrs - JD 1650, 3060 hrs, weights, canopy - Gehl RT 250 CAH, 775 hrs - Bobcat post-hole auger - HD tree shear w/ grapple - bucket w/grapple - **HAY TOOLS, MACHINERY:** Hesston WR 9860 swather, 885 head hrs, 1071 hrs - Vermeer BPX 9000 bale processor - JD 567 baler mega wide, cover edge - 1372 MF mower conditioner - Vermeer R2300 rake - Gehl 250 Manure spreader - 2 15' JD 750 Drills tandem hitch - JD 8300 drill w/seeder - pasture harrow - NH 5 bar rake - Hesston 1007 disc mower - Danuser post hole digger - JD 709 shredder - Peaquea TT400 Tedder - Oswalt silage wagger - 2 bale unrollers - bale spears - Grain-o-vator auger wader - Hutch master plowing disc - 4126 Krause Field Cult - Rayman loader, RM2810g - Sprayer specialties 60' boom **FEED TRUCKS:** 2015 F350, X-cab, 55,000 - Hydra bed w/Feeder, - 2005 F350, Hydra bed, 1 **HAY, FENCING, FARM RELATED:** 300 bales of hay +- JD hay fork for 740 loader - grain bin jacks - my-d-handly feeder - wire winders - selection of JUG waterers - lumber - selection of hand tools - Stihl 290 & 330 saw - generators - rr jack - JD hitches - UTV calf catcher - feed bunks - hay rings - creep feeders - wire and post - log splitter **ATVS/UTV, TRAILERS, WAGONS, MOWERS:** Bobcat 3400 utv, 4315 miles - Polaris 500 sportsman - other Yamaha 4 wheeler - JD EZ trac mower 60" cut - 20' skid steer trailer - 2 wheel trailer w/ramp - 4 wheel wagon w/hoist - 4 wheel wagon - gravity wagons w/ auger - **POOL TABLE, LOG FURNITURE, ANTIQUES, APPLIANCES, HOUSEHOLD, SAFES:** (Quality Furniture) Mission style AMF pool table (see to appreciate) - high quality poker table - w/chairs - nice King size Log bed w/select comfort mattress - Queen log bed - full log bed - 2 Twinn log beds - several log end tables - antler lamps - Mission style Oak full mirror - Oak cylinder desk - Oak step back cabinet - Oak bench - Antique cabinets - trunk - Large Oak table & chairs - Oak table @ chairs - antique churn - selection of older sofas - nice recliner - chest of drawers - several TVs flat screens - Amana W&D - refrigerators - ping pong table - bar w/ stools - Sentinel Gun safe - gun safe - grills - lots unlisted items

LAROY B. QUINN FARMS, SELLER
MISSOURI LAND AND FARM AUCTIONS
DAVE ATKINSON 660-788-3333 JEFF QUINN 660-734-3925

There's a better way to get noticed.
Keep life simple. Take out an ad.

SMALL ANIMAL AUCTION

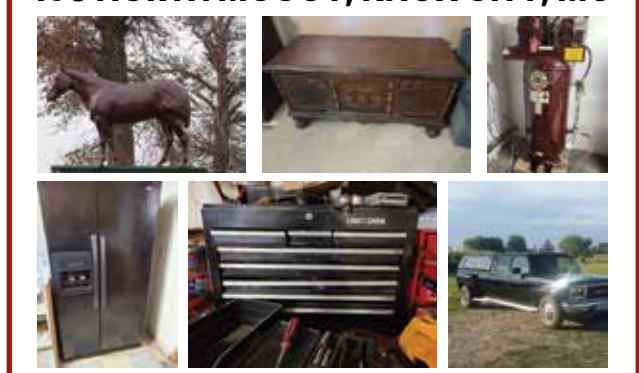
Saturday, February 26th 2022

To be held at the **SCHACHTELE BARN - KEYTESVILLE, MO**
From Hwy 24 at Keytesville, take Hwy 5 approx 4 miles to site w/ brown barn/green roof on the West side of the road, or from Hwy 36 at Marceline exit take Hwy 5 South, approx. 16 miles to site. Follow Auction signs!

Starting @ 11:30 am
We will start with Misc. Items Outside & Follow with Small Animals approximately 12:00 noon. Expecting Chickens, Geese, Ducks, Turkeys, Rabbits, Goats & Many Other Small Animals!
Expecting 300-400 Head of Sheep & Goats.
We are NOT accepting any HOGS! All Out of state Animals to be Sold MUST Have Proper Health Papers!
Lunch Served • Call for More Details!
Tony Schachtele 660-413-3250
WE APPRECIATE ALL CONSIGNMENTS!
Terms Cash - good Check with Proper ID
We are **NOT** Responsible for Accidents to Man, Woman, Child, or Animal. We are **NOT** Responsible for Lost, Stolen, or Damaged Articles or Property.

PERSONAL PROPERTY AUCTION

SATURDAY, FEBRUARY 19, 2022 • 10AM
108 NORTH MCCOY, KNOX CITY, MO



TRUCK, ANTIQUES/PRIMITIVES, COLLECTOR ITEMS, FURNITURE, TOOLS, HORSE/SHEEP/COW SUPPLIES
This auction will be in a heated building. Truck will sale at (12pm) noon.
SELLER: BOB & KAREN HUFFMAN
More pictures and information at:
www.hammondwatsonauctionservice.com
Hammond & Watson AUCTION SERVICE
Lionel Hammond & Kirk Watson
573-406-3877
PALMYRA MO

Macon Real Estate Auction

Thursday, March 3, 2022 at 5:00 p.m.
105 Bennett Avenue, Macon, Missouri.
Shoemaker Investments

Directions to auction location: From US Highway 63 (North Missouri Street) in Macon, turn West on East Briggs Drive for 0.3 miles then turn left onto Gantz Street then turn left onto Bennett Avenue. The property will be on your left. Look for signs the day of the sale.

Real Estate: We will be selling at auction this 3 bedroom, 2 bath, fully renovated ranch style home with a 2 car garage located on a quiet street. The home offers a large, shaded yard and a covered back porch and patio. The home has been completely gutted and rebuilt to new specs. It offers a new roof, siding, spray foam insulation, new HVAC, new floor coverings, updated windows and doors, updated laundry room and new appliances. You will love the large living room, updated kitchen and baths and the breakfast nook/formal dining room with double doors overlooking the patio. The upstairs offers additional with partially finished living areas with built in storage.

The real estate will sell promptly at 5:00 p.m.. If you would like to schedule your personal showing, please call **Scotty** at 573-356-4405.

*See Terms and Conditions for Purchase of Real Estate below.

DOWN PAYMENT: 10% of the contract purchase price will be due upon acceptance of the Sales Contract. Personal or Cashier's Checks will be accepted. This is "AS IS, WHERE IS" and is non-refundable. **CLOSING:** Closing should be within 30 days of the auction date.

SCOTTY'S AUCTION SERVICE
573-356-4405
Michael Cunningham 660-651-2288 • Paxton Pittman 660-346-1956
WWW.SCOTTYSAUCTIONSERVICE.COM

Auction

SATURDAY FEBRUARY 26, 2022 • 10 AM
Location: AUCTION BUILDING, 1916 S. 18th (HWY 5) CENTERVILLE, IA

ANTIQUES/COLLECTABLES: Original Sleepy Eye Vase; Lionel "0" Gauge #224 Locomotive Elec Train Set (60+ yrs); Howel's 100+ Original Root Beer Bottlecaps (sold in the 20's---40's); Very Nice Chamber Pots (one with matching Pitcher/Bowl); Griswold CI Kettle/Skillet Lid; Muggsy Cookie Jar; Bracket Lamp; Double Wedding Ring Quilt; # 40 Dazey Churn; Spongeware Pitcher; Old Candlestick Phone; Nice Crock Bowls, various sizes; Vintage Glass Pictures; Rand McNally Map Cabinet; Framed Centerville Uptown Tavern Menu; High Chair (Presbyterian Church); Small Red Chair from Centerville City Book Store; Old Buttons; 8 Day Clock on Mirror; Teacher Bell; Church Collection; Antique Walnut Chest w/ Oval Mirror; Nice Sets of China; Cane Bottom Chairs; Ice Cream Stools/Chair; Wicker Pieces; Large amount of Vintage Collectables;

FURNITURE, TOOLS, ETC: NICE Reclining Leather Sofa and Matching Reclining Loveseat; Lazy Boy Recliner; Modern Hutch; Queen Anne Chairs; Table; Other Furniture; Large Collection of Gaither Music cds, dvds, & vhs; New InstaPot; Kitchen Items; Box Lots; Recumbent Elliptical; Tools & Garage Items; AND SO MUCH MORE.

Plan to spend the day with us, see what else we discover.
PICTURES ON Website demryauction.com OR on FB Demry Auction LLC
Demry Auction, LLC Centerville, Iowa
Tom Demry 641-895-2508
Janet Demry 641-895-4310 641-856-6408
Kristy Demry 641-895-2509 • Junior Lawson 641-895-0037

NEMO TRADER • Advertise with us TODAY!
Phone: 660.665.8500 • PO BOX 809
701 East LaHarpe St, Suite C, KIRKSVILLE, MO 63501

JOHNSTON AUCTION & REAL ESTATE
JAMES 573-473-4904
Dinges Estate AUCTION
Sat., Mar. 12th @ 10 am
Location: 1013 W. Burkhardt St, Moberly, MO 65270
BRICK RANCH HOME, GOOD FURNITURE
****OPEN HOUSE****
Wed., Mar 2 & 9 • 4-6 pm
visit www.jamesjohnstonauction.com
for details & pictures.
John & Elaine Dinges Estate
- Madison, MO - jamesjohnstonauction.com

SPARKS Auction SERVICE

We can help you with all your auction needs
**Land 1%
Real Estate 3%
Household 25% your site
Household 35% our site
Machinery 5-15%
Value & volume**
Start planning today.
We do auctions on site at your place or at our facility. Let us market your merchandise.
We have over 20 years experience auctioneering.
Call Jesse @ 573-406-8787
204 East Reid Street Edina, Mo 63537

Now Accepting Consignments

Farm related & construction equipment items for our Spring Consignment Auction to be held at **Taylor Auction Co. lot**
14429 State Highway J, Brasher, MO 63533

Saturday, March 26th

Consign by Tuesday, March 8th to be included in printed advertisement. Advertise early for best results.

Please contact Dick 660-341-4939 or Becky 660-216-4507 to consign. Watch for additional information

TAYLOR AUCTION COMPANY
AUCTIONS, APPRAISALS, EQUIPMENT SALES
www.Taylorauctionco.com

SPARKS Auction SERVICE

APRIL 2ND @ 9 AM MACHINERY CONSIGNMENT AUCTION

We will be accepting the following.
Tractors, Implements, Combines, Lawn Mowers, Campers, Auto's, Boats, Hay, Hand & Yard Tools

NO CHARGE FOR NO SALES
0-\$1000 = 15%
\$1001-\$5000 = 10%
\$5001-\$10,000 = 8%
\$10,001-\$25,000 = 6%
\$25,001-\$50,000 = 4%
\$50,001 & OVER = 2%

Consign Today

LET US MARKET YOUR PRODUCT!!

Give us a Call Today!!
204 E. Reid Street, Edina, Mo
573-406-8787

SULLIVAN AUCTIONEERS, LLC

A FAMILY OWNED BUSINESS SINCE 1979



Headquartered in Hamilton, Illinois, Sullivan Auctioneers, LLC is one of the largest Real Estate and Farm Machinery Auctioneers in the nation. For more than 40 years we have been conducting professional auctions. We connect our sellers with thousands of interested buyers around the world.

Considering an Auction?
CALL OR EMAIL TODAY FOR A NO OBLIGATION CONSULTATION!
Toll Free (844) 847-2161 | Sold@SullivanAuctioneers.com
www.SullivanAuctioneers.com | Lic. #444000107

TIMED ONLINE • NO-RESERVE ESTATE AUCTION

BIDDING CLOSES: TUESDAY, MARCH 8th STARTING AT 10:00 A.M.
PHYSICAL ADDRESS: 17665 DEXTER RD., LINNEUS, MISSOURI
EQUIPMENT INSPECTION: SAT., FEB. 26th • 9:00 A.M. - 4:00 P.M.



Highlights Include: 2003 John Deere 7220 2wd tractor, 2,545 hours; 1992 John Deere 4560 2wd tractor, 4,742 hours; 1985 John Deere 4450 2wd tractor, 5,967 hours; 1989 John Deere 9500 4wd combine, 3,865 eng./2,689 sep. hours; 2002 John Deere 920F 20' platform; 1998 John Deere 693 6 row 30" corn head; Killbros 20' head cart; E-Z Trail 21' head cart; 1998 John Deere 1780 6/11 planter; John Deere 8000 12' drill; 2002 Chevrolet C8500 grain truck, 195,775 miles; 2007 TravAlong 20' steel livestock trailer; 2005 Doolittle Xtreme 18' x 7' flatbed trailer; Shop built 24'x8' flatbed trailer; Shop built 20' flatbed trailer; Shop built 7'x4.5' flatbed trailer; 2003 John Deere 980 26' field cultivator; 2004 John Deere 637 22' disk; Case-IH 3900 18' disk; John Deere Er014 6 row 30" cultivator; John Deere 2-pt. 4-bottom plow; John Deere 915 7 shank V-ripper; EZ-Trail 510 grain cart; Westfield MK80-61 8"x61' swing away auger; Killbros 100 bu. gravity wagon; John Deere 1219 9' mower conditioner; John Deere 346 small square baler; John Deere 680 5-bar rake; John Deere 350 9' sickle bar mower; Bush Hog 2815 15' batwing mower; Bush Hog 160-10 10' 3-pt. blade; John Deere 350 manure spreader; Gehl 125 mix-all grinder mixer; John Deere 210 feed wagon; Kewanee 3-pt. 8' blade; Toyota 3FGL20 forklift; 2002 Honda TRX350 Rancher 4wd ATV; Danuser F8 3-pt. post hole digger; John Deere bale spear; 36" pallet forks; 12' telescopic boom; 20 gal. ATV sprayer and other farm support items
WESLEY GROVES ESTATE
EQUIPMENT QUESTIONS:
SETH LINK (660) 247-3659
AUCTION MANAGERS:
CODY HOLST (217) 242-8747
MATT SULLIVAN (309) 221-7001
(844) 847-2161 | sold@sullivanauctioneers.com
www.SullivanAuctioneers.com | Lic. #444000107

AUCTION

HOSTED BY CHRIS AND FRED A GINGERICH

CONTACT CHRIS @ 641-658-2425 FOR MORE INFORMATION

Antiques
Collectibles
Salesman
Samples

45 Guns
Ammo

Signs & Store
Displays

1-Run ad
Clip-Save

Lunch by
Amish Ladies
+ a Benefit
Bake Sale

Over 500 Lot
Items

Free Coffee & Donuts
Till Sale Time

300 pcs of Griswold
& Other Cast Iron

**SATURDAY
MARCH 5TH**

**8:30AM SHARP
DOORS OPEN AT
7:30AM FOR PREVIEW**

**28000 HWY 5
CINCINNATI, IA
52549**

**6 MI. SOUTH OF CENTERVILLE, IA
ON HWY 5 OR 14 MILES
NORTH OF UNIONVILLE, MO**

15 pcs. NIB J. Deere & IH Toys, High Detail
25 pcs. Rd. Wing, Bl. Rbn. & Western. Stoneware Crocks & Jugs
25 pcs. Wnchter, Marbles & KeenKutter Brd. Axes, Hatchets, Axes
KeenKutter Items: Push Lawn Mower, Sit Peddle Grinder, Post Hole Digger, Miter Saw Box w/ Saw, Apple Peeler, Hand Crank Corn Mill, Spade, Saws, Draw Knife, Hand Tools, & more
Winchester Items: Brass Handheld Scale w/ Bucket, Plane, Drill, Squares, Hand Tools, 10 ga. Cannon on Wheels.
Anvils: 54" Cone Anvil w/ slot, 178# Peter Wright, 158# M&H Armitage Mousehole, 130# Peter Wright, 102# Trenton, 90# Lakeside, 71# Kohlsua Sweden, 30# Vul 3 CAN 11 & B Co.
6 Hog Oilers: Sipe MFG Co. w/ 2 rollers, Columbian Single Roller, Hog Joy 1 Roller, Hog Joy w/ 2 Rollers, 2 no name Oilers.
Hit & Miss Engines: J. Deere 1 1/2 H., Maytag Twin Cyl., Mt. Davidson Steam Engine, 4pt. L5

Guns & Ammo (Starting @ approx. 11am)

Rem. 870, Express Mag. Pump 12ga.
Ted Williams, MD 200, 20ga., Pump
Browning Belgium Light 12, 12ga., Auto., Special Trap
Rem. 700 308 B. Barrel, Leupold Scope
Rem. 870 TB, Wingmaster 12ga. Pump
Ruger American 350 Legend, Crossfire Scope, Bolt
6.5 Creedmore, Blot, Sig Sauer Scope
Savage 93R17 17 HMR, Thumbhole, Bolt, Scope
Astra 337 Revolver, Wood Grips
Ruger American 308, Bolt, w/ Nikon Scope
Beretta AL 391, Pheasants Forever Gold, 12ga., 1 of 1,000
Winchester 1890 22 Pump, Octagon Barrel
Rem. 25, 25-20, Pump
2- Mossberg 500, 410, Pump, New
Marlin 60 SB, 22, Auto, S.S.
Ruger 77, 243, Winchester, Laminated S.S. Bull Barrel, w/ Scope
Browning Citori 12ga., Over & Under, Special Sporting Clay Edition
Yildiz TR12 Mag., Single Shot, Ducks Engraved, New
Rem. 742, 30-06, Auto, 1776-1976 Centennial
Smith & Wesson 1000, 12ga., Auto, Special
Marlin 336 W. 30-30, Lever w/ Scope
Fierce 280 Ackly, Bolt, Leupold Scope, Customized
Winchester 70, 243, Bolt w/ Nikon Scope
Mossberg 100 ATR, Bolt, 7 MM-08, w/ Redfield Scope
Rem. 7600 30-06, Pump w/ Scope
Browning Citori, 12ga., Over & Under, Special Trap
Rem. 870 Wingmaster, Pump
Thompson Center Encore, 209x50 Mag, Muzzleloader
Rem. 11-87, Super Mag, 12ga., Auto
Mausser Modelo Argen. 1891 7MM w/ Scope
Thompson Center Encore w/ 3 Extra Barrels, 6.8 MM, 300 Win. Mag, 223 Rem., 220 Swift, All 4 w/ Scopes
Rem. 1100 LT20, Special, 20ga.
Rem. 700 BDL 243 Win. Bolt, w/ Scope
Rem. 700 250 Savage BDL Classic, w/ Scope, yr. 1984
Thompson Center Pistol, 2 Extra Barrels, 44 Mag., 22 LR, 223 Rem. w/ Scopes
J. Stevens WRF 22, Bolt, Old
Marlin 81-DL 22 cal., Bolt
Winchester 190, 22 Auto, Needs Work
Llama 38 Special Revolver
Heritage 22 Revolver, Barkeeper Edition
Heritage Rough Rider 22, Revolver
Ruger 12ga., Over & Under, Shotgun, New
Colt 45, Auto, Government, Nice

Guns From 2 Separate Estates:

Condition of guns - lot of like-new guns, rest good users.
Cannon 48-gauge Gun Safe and Wood & Glass Gun Cabinet
Lots of new 22 Ammo, 270, 22-250, 243, 30-06, 7MM, 223, 308
6.5 Creedmore, 22 Mag, 20ga., 410 & More.

Signs & Store Display:

Sunbeam Bread, Metal, 1 sd., 72"x36"
Meadow Gold Ice Crm., 1 sd., 54"x32", Metal
Genuine Ford Parts, 2 sd., Porc., 24"x16", Round, Mint
Minn. St. AAA, Porcelain, 2 sd., 29"x23", Round, Mint
Peterson Hatchery, Samar, IA, Metal, Cut-out Chick, 1 sd.
Meadow Gold Ice Cream, Porcelain, 2 sd. 18"x18"
Capital Bread, Metal, 1 sd., 23"x10"
McCormick Dairy Equip., Metal, 1 sd., 23"x14"
Drink "Squeeze" Orange, Metal, 1 sd., 25"x20"
Pepsi, Yellow, Red & Blue, Metal, 1 sd., 32"x27"
Strand's Fine Bread Thermometer
Mobilgas Pegasus, Porcelain, 2 sd., 12"x12"
Deep Rock - Motor Oil, On Stand 14" tall, Porc., 2 sd., 72"
Barq's "It's Good Root Beer" Thermometer, 10"x25"
Ford Tractor, Ferguson System, Comp., 21"x11"
Powerlube Motor Oil, Metal, 1 sd., 25"x18" Tiger
Royal Crown Cola Thermometer, 10"x25"
Sinclair H-C Gasoline, Porc., 2 sd., 48" Round
Reach for Jaeger's Butternut Bread, Metal, 1 sd., 28"x20"
Chew Redman Tobacco, Porc., 2 sd., 60"x44", 2 pc.
Our Chick Starter, Comp., 22"x44", Store Disp.
Kent Feeds, metal, 1 sd., 46"x23"
Kraft, Milk Bnk Boost from Pex, Chicken-Cut-out
Supersweet Feeds Thermometer, Round
Pillsbury Best Feeds Chalkboard, 24"x36"
Feed Shawnee Feed, Metal, 1 sd., 48"x18"
Member Tree Farm, Composite, 24"x24"
Triple F Feeds, Metal, 36"x10"
Coca-Cola, Round, Porc. w/ Bottle, 1 sd., 36"
Texaco, Porcelain, 78"x54", 2 sd.
Dr. Wells, The Cooler Dr., Display Board
Say Pepsi Please, Metal, 7"x27" Thermometer
Golden Sun, Metal, 58"x58", 1 sd.
Feed Corn Feed, Metal, 1 sd., 20"x20"
Pepsi, Metal, 67"x35", 1 sd.
Cyclone Fence, Porc., 1 sd.
Lay or Bust Poultry Feeds, Porc., 1 sd., 17"x26"
Drink Howel's Root Beer, Metal, 1 sd., 36"x20"
Tydol Flying A, Round Porc., 72", 2 sd.
Colonial is Good Bread, Metal, 1 sd., 58"x38"

Salesman Samples & Toys:

Emerson 2 Bottom Brass Plow Marked
E.B. in 6 places, w/ book, High Detail
Winchester 10ga. Cannon, yr 1901
3 - Buckey Brass Steam Whistles
2 - Junior White Mtn. Freezers
Sunny Suzy Wash Machine
Korro Coal Grill
Hart Coal Stove
Dover Dolly Sad Iron
Marling Mfg. Feedlot Eq. Self Feeder
5 - Minute Anvils, Fargo Foundry & More
Garamycin Set, Ancient Surgical Tools
Marx Hay Mower
Buddy 1 Texaco, Fuel Truck

Misc. Collectibles:

2 - Horse Windmill wts.
2 - Horse Weather Vanes w/ Glass Ball
Red, Purple, Blue Glass Painter Vane
Arrows on Stand, more Weather Vanes
8 - Glass Daizy & Other Butter Churns
Enterp. Hand-crank Coffee Grinder, Red

Griswold Cast Iron:

(This is a very abbreviated list. Call for complete catalog.)
w/ Lg. Logo - (2) #5, (8) #6, (5) #7, (10) #8, (5) #9
w/ Lg. Logo and Heat Rings - (2) #10 and (3) #11
Dutch Oven w/ Lid - Multi, #8, Multi, #9, Multi, #10
5 - Heart & Star Waffle Irons, 1 w/ High Base
100th Yr. Anniv. #8 Griswold Comp. 667
#8 Griswold Skillet w/ Wooden Handle
#8 Spider "Erie", Mint Condition
#0, Heat Ring Skillet
2 - #2, Heat Ring Skillet, Sq. Block
5 - #3, Some w/ Heat Rings
5 - #4, Some w/ Heat Rings
7 - #12, Lg. & Sm. Logos
5 - #14, w/ Lg. Logo
#6 & #7 Dutch Oven w/ Lid
#10 Erie Dutch Oven w/ Lid
#10 w/ Lid
#50 Heart & Star Gem Pan
#3 Wapak Indian Head
#768 Sq. Pan w/ Cover - Like New
#280 Corn or Wheat Stick Pan
3 - #3 942 Gem Pan
#3 "Favorite" Roaster w/ Lid
#12 Gem Pan
2 - #8 Ham Boilers 2363
946 Gem Pan
#10 949 Gem Pan
#11 950 A Gem Pan
Round Breakfast Skillet, 665
4 - Square Breakfast Skillet
#16 & #12 - Griddle Bail w/ Handle
3 - Square Fry Skillets, 1 Sq. w/ Glass Lid
Multi #7 Skillets w/ Lids
#8 & #9 - Skillet w/ Lid

Cast Iron Toys:

#0 Griswold Skillet
#4 Lodge Toy
Skillet, Tea Kettle, Pot Set
2 - #0 Dutch Ovens
E.G. Simmons Waffle Iron
Jr. "Stover" Waffle Iron
100 Yr. Anniversary Set
Griswold Round & Sq. Ash Tray

Store Display & Advertisements:

Adam's Chicklet, Candy Tin Display
Juicy Orange Dispenser
Habart Elect Coffee Grinder
3 Wooden Butter Churns, Favorite
Waukesha Fox Head Health Bev. Wood Box
Tecumesh Power Product Display
Roy Rogers & Dale Evans, Metal Lunch Box
Husman's Potato Chips Tin Pail
George Washington Cut Plug Tin Box
Chickadee Farms Fresh Eggs - Egg Crate
Use Your Cents Curtiss Penny Candys
Planters & Pennant Salted Peanuts. Grn. Gl. Jar
Sears & Roebuck Roasted Coffee, Square Tin
Dillworth's Prime Grade Coffee, Wood/Tin Bin
Buster Brown & Tige Display
Putnam Fadeless Dyes, Display Cabinet

Glassware:

2 Sets Green Carnival, Grape/Leaf Canisters
2 Sets Red Moon & Star Canisters
2 Sets Green Moon & Star Canisters
1 Set Brown Moon & Star Canisters
1 Set Teal Moon & Star Canisters
3 Green Carnival Punch Bowl Sets
2 Blue Carnival Punch Bowl Sets
2 Brown Carnival Punch Bowl Sets
1 Ruby Red Punch Bowl Set
2 Blue Carnival Water Sets
1 Brown Carnival Water Set
Carnival Berry Sets - 1 Orange, 1 Purple
1 Brown Water & Wine Set w/ 6 Sm. Glasses
1 Violet Blue Carnival Footed Punch Bowl Set (Rare)
Footed Moon & Star Candy Dishes - 1 Lg. Green, 1 Med. Teal, 2 Med. Red
Moon & Star Candy Dishes - 1 Med. Green, 1 Sm. Green, 2 Sm. Brown
Water Sets - 1 Brown, 1 Green, 1 Clear w/ Red Roses, 1 Pink Fenton
1 Lg. Ruby Red, Cape Cod Dinnerware Set (Berry Set & Cake Stand incl.)
1 Brown Sugar/Creamer, Toothpick Holder, & Sm. Basket Set
Moon & Star Basket - 1 Lg. Green, 1 Lg. Brown, 3 Sm. Brown
Brown Carnival Fruit Bowls - 2 Oval, 2 Footed



AUCTIONEER, ROBERT HELMUTH OF WISCONSIN

TERMS & CONDITIONS: FFL RULES APPLY FOR ALL OUT OF STATE GUN BUYERS. PAYMENT PLAN: CASH OR CHECK ONLY. ANNOUNCEMENTS MADE DAY OF SALE TAKE PRECEDENCE OVER PRINTED MATERIALS. AUCTION INSIDE HEATED BUILDING - SIT DOWN TYPE AUCTION. OFF ROAD PARKING AVAILABLE. NOT RESPONSIBLE FOR ACCIDENTS OR THEFT.