

FREE

NEW EDITION EVERY FRIDAY!
VOL. 29 • NO. 64 • APRIL 22, 2022

NEMO Trader

THE NEMO TRADER

PO BOX 809 • KIRKSVILLE, MO 63501 • PHONE 660-665-8500

Web Site: nemotrader.net • Email: sales@nemotrader.net

A WEEKLY ADVERTISER SERVING ALL OF NORTHEAST MISSOURI AND THE SURROUNDING AREA

Springdale Sale

	#1750RD 2022 Keystone Springdale 1750RD Rear Dinette, Light Weight Was \$22,495 Sale Price \$20,480
	#1800BH 2022 Keystone Springdale 1800BH Rear Bunkhouse Was \$22,495 Sale Price \$20,480
	#105618 2022 Keystone Springdale 1760BH Slide-Out, Bunkhouse Was \$24,995 Sale Price \$22,420
	#108007 2022 Keystone Springdale 1790FQ Slide-Out, Front Queen Bed Was \$24,995 Sale Price \$22,420
	#108565 2022 Keystone Springdale 293RK Slide-Out, Rear Kitchen Was \$41,495 Sale Price \$38,980

Beilstein
CAMPER SALES

573-655-2254 • www.beilsteincampersales.com
28248 327th Ave. • LaGrange, MO
Hwy 61 South, 4 Miles South of LaGrange, MO



Hwy 36 Hunnewell, MO 63443
573-731-3300

Rain Sales Event

If you come in while it's raining we will pour out the saving! We finance everyone regardless of credit as low as 0% We Guarantee Approval!



Starting at **\$2499.99**
Barns starting at **\$7995.00**



Starting at **\$24,999** sizes up to 60' wide 16' tall



RAIN special **\$6500** only as pictured any color
Repo Finished tiny home heat a/c ready for delivery to you!



\$6500 only as pictured any color
Repo Finished tiny home heat a/c ready for delivery to you! 12x20 **\$12,599.99**



Starting at **\$12,600**

ESTATE AUCTION

May 1st | Rain or Shine
Hwy 36 Hunnewell MO 63443
At 1PM

Antiques collectibles household items, tools, fishing and hunting supplies, appliances, tractor, trailers, dump truck, mowers, too much to list.

Auctioneers Note:

This is a nice estate sale come out rain or shine. Terms: cash, good check or card. Loader Tractor available. Concessions stand and restroom on grounds see you there. (Merchandise must be paid prior to removing from property) NOT RESPONSIBLE FOR ACCIDENTS OR THEFT.

Estate of William Poe, Bethel Missouri

Auction Conducted by: Col. Ray Delaporte & Bryan Shuck Auctioneers



WEEKEND FLEA MARKET

April 29th thru May 1st

Hwy 36 (next to old C&M Service)
Hunnewell MO
9:00 am to 7:00 pm daily

Lots of vendors
Vendor Space available
Free Admission.

For More Information Call
Col. Ray Delaporte 573-406-3783 or
Bryan at Tristate Sales 573-7313300.

RAY'S AUCTION SERVICE



COL. RAY DELAPORTE
AUCTIONEER & SALE
MANAGER

573-406-3783

"We Sell NOT Yell!"

Kirksville, Missouri
KIRKSVILLE LIVESTOCK LLC

24295 Benton Road * P O Box 242 * Kirksville, MO 63501
www.kirksvillivelivestock.com

Special Feeder Cattle Sale
Monday, April 25, 2022 • 11:00 a.m.

- Mark Mallett - 100 BBWF str & hfrs, 2nd round shot, 150 days weaned, 575-700#
Mike Oberman - 85 Blk str & hfrs, 1 round shot, 75 days weaned, 550-650#
Cohen Kelsey - 80 BBWF str & hfrs, 2 round shots, 80 days weaned, 450-550#
Lindsey Beinhart - 36 mostly Blk str & hfrs, Iowa Green Tag, 325-600#
Ryan Tuller - 36 Blk str & hfrs, Iowa Green tag, 45 days weaned, 400-500#
Steve Miller - 22 Red Angus str & hfrs, 2nd round shot, some weaned, 450-600#
Shelton Zeiset - 16 Blk str & hfrs, LTW, 400-600#
Larry Snow - 15 Blk str & hfrs, 1 round shot, 500-550#
Tyler Orman - 10 Blk str & hfrs, Iowa Green tag, 45 days weaned, 500-600#
Bryan Marrow - 8 Blk str & hfrs, Iowa Green tag, 45 days weaned, 500-650#
Don Stephenson - 6 Sim/Ang str & hfrs, Iowa Gold tag, 100 days weaned, 550-600#

More listings by sale day

Check website for updated listings: www.kirksvillivelivestock.com

We are open on Sunday to Receive Your Livestock

"Your Business is Very Much Appreciated"

"Proud to Serve Area Livestock Producers"

For more information or someone to

Look at your Livestock Phone:

Patty Foster, Office Manager - 660-665-9804

Chuck Ambrosia - 660-342-3530 Luke West 620-215-5770

Mark Herbold - 515-720-8667 - Al Ashmead - 660-216-8730

Jeremy Jarman - 660-341-9879 - Daniel Smith - 660-341-8396

Caleb Randolph - 641-919-8539 - Doug Flesham - 660-626-7148

Karol Kirkpatrick - 641-777-3403



648873ch

Polled Hereford BULLS



GALEN KRIEG
217-743-5382
309-299-5695

Basco, IL

FOR SALE
All Sired Angus Bulls,
14 & 18 Months Old.
Harold Trump
660-341-5730

Cattle

For Sale: 2 Registered Angus Bulls, 18 months of age. 660-359-7498

Two Red Angus/Charolais Crossbred Bulls, 21 months old, guaranteed, sound, gentle, \$2,150 choice. Call 573-881-3557

Limousin and Limflex bulls for sale, black and polled, yearlings and 2 year olds, semen tested, docile, well muscled, some calving ease, free delivery \$2,500 Schrock Cattle 660-988-1163

Farm fresh Angus beef for sale, grown on grass and finished on corn for a premium beef, less than 2 years old, processing options available \$3 per hanging pound 660-988-1163

Cattle

25 black Angus heifers, 2nd and 3rd period pregnancy. red to black Angus bull, all nice and gentle. 660-676-9199.

Wanted: Holstein heifers, 250-300 pounds. 641-208-2338.

Limousin and Limousin Composite Bulls For Sale, Black and Polled with Performance and Carcass EPD's Potters Limousin 641-436-7153

Equipment & Supplies

10 Bolt hub, duals, 20.8x38 tires, rims and hubs. \$500. 641-919-2862

John Deere 709 or 609 Brush Hogs, 3 pt, 540 PTO, Cat II, choice, \$1,750. Call 573-881-3557

9 Bolt Hub, Dual tires, rims 18.4x38 rims and hubs, \$400. 641-919-2862

John Deere 4320 Row Crop Tractor, 2000 hours, fairly straight, dual hydr., runs out really good, \$14,500. Call 573-881-3557

Organic chicken litter, trailer loads delivered, NPK test, \$125 a ton. Also high calcium lime/dry fertilizer, the farmers friend. 800-807-9612.

Case IH 1200 12/23 center fill no till, center pivot, monitor, \$45,000.00; Kinge 24R 15" no till bean planter rear fold, \$4500.00; other planters. 217-658-4761.

John Deere 750 15' no till drill with grass dolly wheel, \$12,500.00; GP 1500 drill with no till caddie center point, 22 hole 8", \$12,000.00; John Deer FBB 15 hole with grass clutch lift, \$750.00. 217-658-4761.

1200 bushel grain storage bin, \$500.00. 641-208-2338.

1999 - 2600 16x31 split row Kinze planter. 660-768-5552

WE GOT YOUR NEEDS COVERED!



FARM TARPS TRUCK TARPS
HOOP BUILDING COVERS

Troyer TARP MFG.

660-486-3301

20264 STATE HWY. VV • ETHEL, MO 63539

Equipment & Supplies

Adair County Ag & Lawn LLC.
7 miles east of Greentop, MO



2016 SVL 75-2 Kubota Track Loader

cab, heat, (Looks Like New) 2940 hrs. \$44,900

John Deere 7000 Planter

6 Row 30" fertilizer tanks, Bean/Corn Cups, Dicky John & Raven Spray monitor. \$2,950

Cell: 660-341-6267

Shop: 660-397-9970

Equipment & Supplies

Progressive 1300 12K NH3 w tan main and wings, dual no till coulters in front of each row, Raven cooler markers set up for strip till, monitor, \$6000.00. 217-658-4761.

Golden Grain Bins-Spring Discount

Grain Bins	Floors w/12"Supp. & Flashing
18'x18' 4,195bu. \$ 7,398	18'....\$2,065 30'....\$ 5,764
27'x21' 11,265bu. \$14,850	21'....\$2,824 36'....\$ 8,211
42'x24' 32,245bu. \$34,617	27'....\$4,710 42'....\$11,182



GMLS Industries, Inc.
PH: 660-699-2179 or 620-983-2136
www.gmlsindustries.com

647109cb

MEAD FARMS
FEMALE PRODUCTION SALE
Noon • May 7, 2022
At the Mead Sale Headquarters Versailles, MO

500 HEAD SELL!

Selling Elite Females
200 Angus // 50 Red Angus
50 Herefords // 50 Charolais

Selling 100 Breeding Age Bulls

Call or email to request a sale book on this female offering!

DVAuction
Broadcasting Real-Time Auctions

Since 1942
MEAD FARMS

21658 Quarry Lane • Barnett, MO 65011
Office (573) 302-7011 • Fax (573) 348-8325
email: meadangus@yahoo.com
Alan Mead, Owner (573) 216-0210
Jennifer Russell (573) 721-5512
Scott Wall (309) 212-5450
www.meadfarms.com

Your Local
FARM SUPPLY SOURCE
NUTRITION • MEDICAL • FARM • PET • APPAREL

Featured Product

10' BUNK FEEDERS
\$15 OFF
THIS MONTH

Hometown Animal Health has provided quality products, expert knowledge, and friendly customer service to northeast Missouri and surrounding areas. We are a full-service nutrition, medical, and farm supply source carrying complete lines of animal feed and supplies, farming equipment, agricultural parts, lawn and garden tools, work apparel, and much more!"

Hometown
ANIMAL HEALTH

Feed • Medical • Farm & Pet Supplies • Footwear & More

website: hometownanimalhealth.com
660-465-2967

18743 US Hwy, 136 Memphis, MO 63555
"on Hwy 136 west of Memphis"

Monday-Friday 8pm to 5pm
Saturday 8am to 1pm

Buckman Machinery



John Deere 6145 M Tractor, 16 speed quad range, Rev, 3625 hrs, 90% tires, Triple Hydr, with 640 R Loader. Will Trader \$87,500

573-881-3557

Equipment & Supplies

1989 Case IH 1660 4WD combine, 4,206 hrs; Ag Leader Yield Monitor; has like-new front & rear tires; nice outfit, ready to go. Also, 922 John Deere Flex Head; 643 John Deere low tin corn head; and 216 John Deere Flex Head. Call Luke Lay at LaBelle, MO 660-342-6424

International Loader, quick attached, IH mounting brackets, \$400. 641-919-2862

John Deere 22' coil tine harrow, will fit a disk, field cultivator or mulch finisher, good and straight, no damage. 319-836-2214

John Deere 1008 Brush Hog, 3 pt, 540 PTO, good, \$4,750. Call 573-881-3557

John Deere 285 Disc mower, 10', like new, \$6,250. Call 573-881-3557

John Deere 4440 Tractor, CAH, QR, triple hydr, 9000 hrs, recent overhaul, one owner, factory duals, 80% rubber, clean, \$31,500. Call 573-881-3557

Quaker K4 Loader, quick attach bucket and spear, IH mounting brackets, \$3000. 641-919-2862

FRONTLINE FENCING LLC

Steel Pipe Fencing.
Custom Built Gates and Livestock.
Handling Equipment.
Barbed Wire and Woven Wire Fence.
Arrowquip Cattle Handling Equipment.
Post Driver Rental.

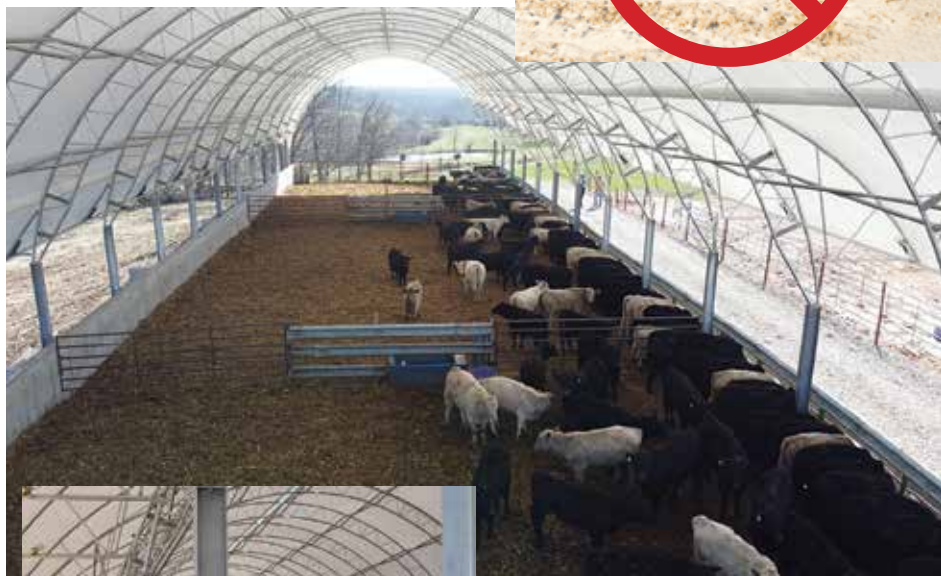
29386 St. Hwy. T Greentop MO
660-956-2430

BUCKMAN MACHINERY, LLC
573-881-3557

JD 4050, 1983, QR, Cab, Air, 466 engine, triple hydr, 95% rubber, \$33,500
JD 4440, 9000 hrs, QR, factory duals, triple hydr, \$31,500
JD 4240, 8000 hrs, one owner, new rubber, \$30,500
JD 5075 E, CAB, WFWD, 980 hrs, loader, nice, \$42,500
JD 6200, roll bar, 2-wheel, low hrs, \$15,500
John Deere Brush Hog, 1008 3 pt, 10', 540 PTO, \$4,750
John Deere 609 or 709 Brush Hog, 3 pt, HD, choice, \$1,750
ICH 1150 Grinder Mixer, with auger, good condition, \$2,950
Bush Hog 2008, 1977, 3 pt, cutter, like new, \$6,500
New Holland 819 Wheel Rake, 2018, 9 wheels, paint on teeth, \$6,950

Loaders & Duals available for many

Animal Housing, Hay Storage & Much More!!



**Skylight
Fabric Structures**
20749 State Highway VV
Ethel, MO 63539
660-486-3250
833-482-8862

Equipment & Supplies

John Deere 5075 E, mechanical front wheel drive cab, CAH, with JD H240 SLoader, 940 hrs, new engine, same as new, \$42,500. Call 573-881-3557

JohnDeere 7200 tractor, 2WD, 5400 one owner hours, power quad, Firestone's, clean, \$42,500. Call 573-881-3557

1958 Farmall 350, Schwartz wide front, PS, fast hitch, TA, matching 13.6 x 38, wts., straight, original, runs and sounds good, \$2700; 2 pt 3 pt prongs, \$120. 217-257-1385

Kewanee 14' disc with cylinder \$750, Kewanee 8' snap coupler blade \$350, AC 3 bottom snap couple plow, \$250. 217-257-1385

LT 245/70 R-17, P265/70 R-17, LT 265/70 R-17, 275/65 R-18, not new, some down on tread, but useable, \$59 - \$69 set. Accelerators Since 1974 Kahoka, MO 660-60-727-3455 or 217-257-1385

2014 John Deere zero turn 48" cut, serviced, new blades, new battery, A-1 shape, 180 hours. Phone 660-375-2408.

WANTED TO BUY: Farm Machinery and Estates. Call James L. Johnston. 573-473-4904

Livestock

Fish for stocking ponds. Catfish, Grass Carp, Crappie, Bluegill, Redear, Bass and minnows. Heindselman Family Farms. Call Greg 660-341-5692.

Red Angus Yearling Bulls for Sale. Sons of Dawson, Declaration, Merlin, and Sleep Easy. \$1600 641-895-4526.

LOLLI LIVESTOCK MKT, INC.

Special Feeder Calf & Yearling Sale
Tuesday, April 26 @ 11am

75 hrs 675lbs (pot load) 80 hrs 650lbs (pot load)
100 hrs 700lbs (pot load)

70 str/hfrs 400-700lbs	20 str/hfrs 400-600lbs
62 str/hfrs 500-700lbs	20 str/hfrs 700-800lbs
50 str/hfrs 400-600lbs	15 str/hfrs 400-500lbs
50 str/hfrs 400-600lbs	15 str/hfrs 600-700lbs
50 str/hfrs 500-600lbs	15 str/hfrs 400-500lbs
45 str/hfrs 400-600lbs	15 str/hfrs 400-500lbs
40 str/hfrs 500-600lbs	14 str/hfrs 600lbs
40 str/hfrs 600-700lbs	11 str/hfrs 500-600lbs
35 str/hfrs 500-700lbs	10 str/hfrs 500-600lbs
25 str/hfrs 600-700lbs	9 str/hfrs 500lbs
23 str/hfrs 400-700lbs	6 str/hfrs 500lbs

This is only a partial listing, many more by sale date.

Cafe Open **Lolli Livestock Market, Inc.** Cafe Open
704 Main st * Macon, MO * 660-385-2516 * www.lolliibros.com
Frankie 660-651-4040 * Tim 660-651-3496
Dominic 660-651-4024 * Joseph 660-346-9711 * Cattle accepted on Sundays

Horses & Mules

Mid-States Horse & Tack Auction

Saturday April 30, 2022
Tack @ 10:00 A.M. Horses @ 2:00 P.M.

KIRKSVILLE LIVESTOCK MARKET
HWY 63 NORTH KIRKSVILLE MO.

Few Early Listings:

AQHA Yrlng Bay Roan Stud Colt Doc O'Lena/
Hes A Peptospoonful.
AQHA 5yr Fancy Broke Gld Dual Rey/Silver Poco King
Fancy 4yr Sorrel Ranch Broke Gld Has been used extensively
on the ranch, super nice quiet Gld.
Fancy 10yr Palomino Ranch Broke Gld Roped and Doctored a
lot of Cattle off of this nice horse.
Really nice 13yr. Broke Red Roan Gld
APHA 11yr Paint Broke Gld
APHA 9yr Fancy Paint Broke Gld
APHA Yrlng Stud Colt very gentle
15yr Sorrel Broke Mare
AQHA Buckskin Broke mare Poco ToeDoe/TE N' TE
17yr Broke Trail Riding Gld
Very Fancy 18yr Paint Broke Gld (Scotty) Stands 15.2 and has
been ridden all over the country.
8yr registered Chestnut mare (I'm a Hot Mess) out of Grand
Illusion in foal for a June Foal
9yr Registered Chestnut Mare out of Desert Bloom
14yr Halflinger Broke to Ride and Drive
Fancy 3yr Jack

This is just a partial listing, check out our Facebook page Mid-States Livestock Sales for other early listings and videos.

This is just a partial listing, check out our Facebook page Mid-States Livestock Sales for other early listings and videos.

FOR MORE INFO:
Josh Weaver (660)341-7964 • Jeb Weaver (660)341-1866

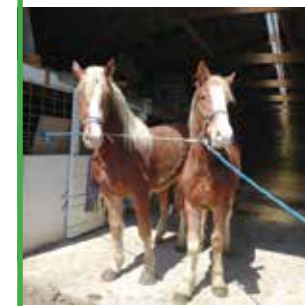
Horses & Mules

Lazy S Farms

LaPlata MO



9 Year old Standardbred
Mare with Filly Colt out of
Gold Nugget, Mare Bred
Back for 2023
Colt, \$7500



Pair of Belgian Fillies 1
1/2 Sisters, 2 year old and
a Yearling, \$8000 for both

785-822-8482

This ad supports
journalism. Facebook
and Google do not.

NEWSMEDIA ALLIANCE #ProtectLocalNews
NewsMediaAlliance.org

Notices

IT'S GARAGE SALE TIME!

Kirksville City Wide
GARAGE SALE
FRIDAY JUNE 3 AND SATURDAY JUNE 4

\$13.50 for 25 words or less
Kirksville Daily
Express
May 28, June 1 & 4, and the
Kirksville Crier
June 1

ADVERTISING DEADLINE IS THURSDAY, MAY 26

Call Today (660) 665-2808

SHULTZ FOR CONGRESS
Fundraiser
May 5th • 4pm - 8pm
VFW Post 2508
21464 Parallel Rd. Kirksville MO

Come out for a silent auction, listen to the RedBrush Band, and support your local Candidate for Congress.

Paid for by Shultz for Congress, Angela Shultz

SMALL ADS WITH BIG RESULTS!

Small ads produce big results. Ask about our advertising rates to fit any budget.

Notices

PASTURELAND FOR LEASE

AECI Land, LLC. has a tract of pastureland for lease located North of Clifton Hill Mo. in Randolph Co. The tract consists of approx. 165 acres of open grass along with 100 acres of woods.

Please contact AECI Land listed below to receive more information. All bids due by 2:00 p.m. May 16th, 2022.

Dallas Sandner, Land Agent
Associated Electric Cooperative, Inc./AECI Land, LLC,
4297 Hwy. F, Clifton Hill, Mo. 65244 | Tel: 660-261-3327 | Cell: 660-651-2073
E-Mail: dsandner@aeci.org

AECI LAND, L.L.C.

CRP SEED MIXES

Iowa, Illinois and Missouri's longest running grower, seed supplier, installer W/seed purchase, cedar tree mowing, spraying, retailer and wholesaler of CRP SEED MIXES since 1987.

OSENBAUGH
PRAIRIE SEED FARMS
the cover crop, CRP and prairie experts.

CRP MIXES • WILDFLOWERS • PRAIRIE GRASSES
CUSTOM SEEDING • SEEDING EQUIPMENT RENTAL

john@prairieseedfarms.com
641-766-6790
800-582-2788 or 800-lucas88

New Businesses

**Miller's
Oven-Fresh Bakery**

Open Friday & Saturday

29595 State Highway 3
La Plata, MO 63549

Recycle Your Stuff for Cash in the Classifieds

CALL today to place your ad!

Stretch your budget with classified ads. Call today about our affordable advertising rates to fit any budget!

CAN'T DECIDE WHETHER
TO SELL OR AUCTION
YOUR LAND?
WE OFFER BOTH.



JEFF PROPST

Northeast and North Central Missouri
Land Specialist

636.209.0362

jeff.propst@whitetailproperties.com



WHITETAIL PROPERTIES REAL ESTATE

HUNTING | RANCH | FARM | TIMBER

WHITETAILPROPERTIES.COM

Whitetail Properties Real Estate, LLC - DBA Whitetail Properties | In the States of Nebraska & North Dakota - DBA Whitetail Trophy Properties Real Estate LLC | Licensed in IL, MD, IA, KS, KY, NE & OK - Dan Perez, Broker | Licensed in AR, CO, GA, MN, ND, SD, TN & WI - Jeff Evans, Broker | Licensed in FL, OH, NY & PA - Jefferson Kirk Gilbert, Broker | Licensed in TX & NM - Joey Bellingh, Broker | Licensed in IN - Bill Minor, Broker | Licensed in AL, GA, LA, & MS - Sybil Stearns, Broker | Licensed in TN - Chris Wilkels, Broker | Licensed in TN - Bobby Powers, Broker | Licensed in AR - Anthony Christus, Broker | Licensed in SC, NC & VA - Chip Camp, Broker | Licensed in NC - Rich Daugh, Broker | Licensed in MI - Edmund Joel Nogaski, Broker | Licensed in WV - Debbie S. Laux, Broker | Licensed in ID, MT, OR, UT & WY - Aaron Miller, Broker



642202cb

Industry



CONAGRA BRANDS

Conagra Brands in Macon is now hiring for all shifts, both full-time and part-time positions in Production, Sanitation and Maintenance.

WEEKLY ATTENDANCE & EMPLOYEE REFERRAL BONUS

Join the Conagra Brands team in Macon with competitive hourly starting pay of \$18.37 per hour, and an excellent benefit package that includes medical, dental, vision and life insurance.

Salary positions in Sanitation and Maintenance are also available.

Open interviews are conducted each Wednesday in the plant between 9 AM and 11 AM, and other times by appointment.

Apply online at jobs.conagra.com/careers and follow the links to submit your application OR text Conagra to 25000.

Professional



NEMR

NEMR is in northeast Missouri. Our cooperative serves 14 exchanges with over 6,000 connections and over 200 CLEC customers. The cooperative provides telephone, broadband, and IPTV services.

NEMR is looking for a Controller to join our team.

The Controller will play a key role in daily operational tasks that promote operational efficiency but will also be called upon to focus on strategic issues while working on projects aimed to help drive growth and revenue. You will be expected to lead and be involved with a varying range of projects and interact and manage relationships both externally and internally. Some travel will be required.

The Controller must perform the duties in a manner that reflects positively on the team and is responsible for maintaining a level of professional expertise and image that promotes efficient use of the resources available.

A bachelor's degree with major course work in business administration, accounting, or a related field and/or several years of telecommunications and management experience are highly desirable.

This position is headquartered in Green City, Missouri.

Please send cover letter, resume and salary requirements to genmgr@nemr.net

NEMR is an equal opportunity provider and employer.

Services

Growing Together!



fb farmbank

Green City Milan Kirksville
660-951-8430 • 660-951-8432 • 660-951-8431

www.farmbank.com

Building Supplies

LANCASTER LUMBER INC.

Lancaster, MO.

1-800-424-5071

LAN-DOW BUILDINGS

www.lancasterlumber.com



LAN-DOW BUILDINGS

"We Build To Suit Your Needs"

"Custom Built"

Pole Barns • Garages • Utility Buildings

"H" Don or Dick Middleton

Memphis Lumber Co.

1-800-337-5858 • 660-465-8595

Fax: 660-465-8596

Investment Property

1 W. State Highway 6 Green City, MO

PETE'S PLACE



Location, Location...This Turn Key Restaurant is conveniently located at the corner of a busy intersection & is available for sale for the 1st time in 25 years. A successful restaurant with a solid history & strong client base, is 3700 sq. ft. with a 44x40 dining room, a 19x40 banquet room, a 14x20 storage area, a 15x23 office, 3 half baths, an expanded parking lot, & a commercial kitchen area. It has 3 phase electric, natural gas, & a 30x30 garage in the back for even more space. Includes freezers, refrigerators, ovens, fryers, coffee makers & much more(a complete list is available)!!

MLS#29074 \$179,900

Do Not Delay call Charity Taylor today for your showing 660-341-4607



21 CENTURY 21
Lifetime Realty Each Office Independently Owned And Operated

1605 S. Baltimore Suite A
Kirksville, MO 63501
660.665.5678

Building Supplies

Premium Metal Roofing



AW Metal Inc.
Metal Roofing Headquarters

641-664-3990 • ammetail.net

Lawn & Garden

Large garden plot available for season in city limits of Kirksville. Includes water and utility shed. Call 660-956-0740.

2014 John Deere zero turn mower, 48" cut, 180 hours, excellent shape. Phone 660-375-2408. No texts.

Visit Peckosh Landscaping for Garden Plants: Tomatoes, Peppers and more. Perennials, Annuals, Hanging Baskets. 23198 Hwy H/Boundary St. just North of the Troy Mills Store

Miscellaneous

John Deere 1780 16 30" 31 15" no till, vacuum seed star monitor, shedded, \$22,500.00; John Deere 7000 6R30' with row splitter no till \$6500.00; John Deere 7000 6R30 with 5 row splitter, no till, \$6000.00. 217-658-4761.

Pets & Supplies

MOVING SALE

April 22 & 23 | Fri & Sat 8 am to 4pm

Furniture, couches, shop tools, hunting misc. all kinds decor, household things, photography

26206 State Hwy T Kirksville, Mo 63501

Miscellaneous

Krause 30' disk tandem on main 9" spacing, \$2000.00; John Deere 230 24' w tine harrow, \$1750.00; Smaller disks; planters; mulchers. 217-658-4761.

Wilrich 42' FC wt main and wings w/5 bar harrow \$5500.00; DMI 32' FC tine harrow w/hyd coupler on rear, \$5500.00; smaller FC. 217-658-4761.

Fish for stocking ponds. Catfish, Grass Carp, Crappie, Bluegill, Redear, Bass and minnows. Heindselman Family Farms. Call Greg 660-341-5692.

THE HITCHING POST discount Groceries baked goods, week-ends, bent and dent, why pay more, check us out. 24174 State Hwy F, Kirksville.

Visit Peckosh Landscaping for Garden Plants: Tomatoes, Peppers and more. Perennials, Annuals, Hanging Baskets. 23198 Hwy H/Boundary St. just North of the Troy Mills Store

Thor 25" Long Arm Industrial Sewing Machine. Model # GC1510L-25, manual or air operated, purchased new a year ago and runs perfectly. Serious inquiries only. Call 660-234-5016

Miscellaneous

2022 crop Wis Maple syrup, \$36.00 a gallon, volume discount. Raymond Kauffman, 25624 Hanover St, LaPlata, MO 63549.

Yellow Pine Lumber 2x4 thru 2x12 sizes. Shelby Supply 660-299-0615

Wood & Accessories

Wevers Outside Wood Furnaces, have an assortment of parts, line, and etc. Call 660-423-5242, cell 660-216-9885. Open 6 p.m. - 9 p.m. Monday - Friday, Saturday anytime, call first.

Call about our classified ad specials. **660-665-8500.**

MERCHANDISE

Pets & Supplies

Great Pyreneese pups, 4 month old, male or female, \$100.00 or best offer. Great with sheep and predators. 660-627-2008.

3/4 Rottweiler puppies, UTD on shots and deworming. Dock, dewes done. Will be big. \$400.00 for most, \$200.00 with white chest, price firm. Ready 5/9/2022. Cash only! 660-488-5490 or 660-626-4550.



HARRISON FISHERY
POND & LAKE STOCKING

Call us today! 660.423.5482

Your trusted source for quality Fish!

Harrison Fishery, Inc. is a family owned and operated business.

We stock most species freshwater, game & baitfish.

Contact us for price & delivery

660-423-5482

Species Available	Bluegill	Walleye
Largemouth bass	Redear sunfish	Muskie
Hybrid bluegill	Black crappie	Catfish
Golden shiners	Fathead minnow	and More!

Time to gather up the little ones, get their fishing poles and go enjoy a day of fishing



www.harrisonfishery.com

REAL ESTATE RENTALS

Acres & Lots-Rental

440 acres hay, pasture, or 365 acres tillable row crop Worth County, MO. Enterprise Realty 660-582-7160.

REAL ESTATE SALES

Mobile Homes For Sale

AVAILABLE stock mobile homes immediately, double wide and single, 3 and 4 bedroom. 573-499-9993 columbiadiscounthomes.com

Stock mobile homes available: We gottem, single and doublewide 3 and 4 bedroom! Call Tuffy 573-657-2176 amegamobilehomes.com

True modulars 30 to 60 day delivery available, 3 and 4 bedroom. 573-657-7040 chateauhomes.net

RECREATION

Accessories-Recreation

Deer Stands 2 two person ladder stands, 2 one person ladder stands, 6 hang on stands, some are like new, make offer, will make better deal if you take all. 660-346-7445 leave message

Motorcycles

2014 Honda F150 Dirt Bike, good condition, \$3200. Arabela MO 660-730-0020

WANTED TO BUY: Harley Davidson's, any year, any condition, cash money. Days 660-263-1356 or 660-537-0068

FOR SALE



'09 KAWASAKI CONCOURS 1400
1 owner, low mileage, garaged and serviced.

319-795-6804 or 319-524-6520
LEAVE MESSAGE

Wanted

WANTED TO BUY: Harley Davidson's, any year, any condition, cash money. Days 660-263-1356 or 660-537-0068

SMALL ADS, BIG RESULTS!

Small ads produce big results. Ask about our advertising rates to fit any budget.

Air Conditioning/Heating

The Ultimate Wood Heat.



CLASSIC EDGE
TITANIUM HD SERIES
Outdoor Wood Furnace

- More Comfort - Thermostatically controlled wood heat.
- Peace of Mind - Keep the fire outside and eliminate the dangers associated with indoor wood heating.
- Save Money - Wood is a renewable, inexpensive and often free energy source.

CAMPEN
Heating & Air Conditioning
573-288-8966
Canton, MO
CentralBoiler.com

Car Detailing | Cars-SUVs-Trucks-Vans

Schedule Your Appointment Now!
660-665-5768



I have had my vehicles detailed at Community Opportunities, INC. for several years. They have done a professional job each time for a very economical price. I highly recommend their car detailing services.

John Wichmann/
Pagliais Pizza

John Wichmann



MOOSE RUN REPAIR

9 YEARS EXPERIENCE

**NEW LOCATION
GREENTOP, MO
ON US HWY 63**

Tractor • Skid Steer • Combine • Air Conditioning
Self-propelled Forage Harvester & General AG Repairs

Specializing in John Deere

Engine • Transmission • Hydraulics
Power Shift/IVT Diagnosis & Repair
Computer/Electronic System Diagnosis & Repair

660-988-3843
DELVIN "MOOSE" STEINER
GREENTOP, MO

Bush Hogging

CUSTOM CHOPPING

ALL TYPES OF FORAGES
PRESERVATIVE AVAILABLE

Devon Zimmerman 660.464.1324

ATTENTION LAND OWNERS!

**BUYER OF STANDING TIMBER
OWNER /OPERATOR OF SAWMILL - BUY/CUT LOGS
CERTIFIED - BONDED - INSURED**

TRI STATE TIMBER L.L.C.
PH. 660-341-4921 or 660-465-2975
353 1/2 GRAND AVE. • MEMPHIS, MO 63555

NEED TO SELL YOUR HOUSE OR PROPERTY? Get the best coverage around. Call the NEMO and our helpful representatives will assist you in creating your ad. You can even pay over the phone. Call 660-665-8500 for more information.

Construction-Services

Taking bids on demolishing a small house. Salvage or bid. Lots of oak and pine wood. Good windows and doors. Negotiable on haul all away or we provide dumpster. 314-308-8716

Health/Beauty/Fitness

Kirksville Pharmacy

Our Services

- Free Delivery
- Free Mailing
- Drive Thru Available
- Free Children's Vitamin Program
- Med Sync Program
- Medicine On Time Program
- Fillmaster Flavoring for Liquid Prescriptions
- Competitive Prescription Pricing
- Vaccines Available
- Free In-Store Coffee

Call us at 660-956-7010

VISIT US AT

1611 S Baltimore Suite B
Kirkville, Missouri 63501

HOURS OF OPERATION

8:00am-6:00pm M-F
8:00am-12:00pm Saturday

KIRKSVILLE

We are proud to be your local pharmacy

We look forward to serving Lancaster Drug patients and welcoming their staff to our Kirksville Pharmacy team!



Signature
Overhead Doors and Remodeling, LLC

660-785-0248

www.signatureremodelingkv.com

Residential and Commercial Installation and Service

Construction-Services

SPRAY FOAM INSTALLATION! We install open and closed cell spray foam. Strengthen your building and block drafts! Over 1 Million bd. ft. applied. Contact Lester at 641-208-7071, Spray Tex LLC 16302 192nd Street Bloomfield IA 52537

Chat/Dirt/Gravel

DIRT WORK All types of excavation, reclaiming overgrown fields, including CRP and WRP. Building site preparation, creating new trails and crossings, Food plot development and maintenance. Leveling and grading, wetland construction and maintenance. Pond and lake cleaning and construction. Call for quotes. 660-342-2701

Need something? Let us help you. You can advertise that you are looking for a special item. Call 660-665-8500 for more information.

Miscellaneous

SCOTT HUSKEY'S HOME SERVICE R-10 Foundation Enclosure Systems for manufactured, modular, & site built homes. Saves on utilities and prevents freeze ups. General maintenance and repairs since 1972 573-696-3468 "GO DAWGS"

Hanging baskets \$22.00, Planters \$30.00, 4 pack Flowers \$2.00 each. 4" Rd \$3.00, 6" Rd \$4.00, Vegetable Plants \$1.50 each. Rhubarb Plants \$5.00. We have a variety of baskets, planters and bedding plants. Also fertilizer blends for your garden raised beds etc., Potting soil \$15 per 2.8 cubic bag. Contact Kauffman Produce 11538 Iceberg Ave, LaPlata MO 63549

Garden Seed - Onion plants and bulbs, seed potatoes, candy, honey, spices, kitchen wares, wooden handles, greeting cards, gloves. Train Track Candies & More 11538 Iceberg Ave, LaPlata 3rd lane to your left!

Backhoe/Bulldozer

Show Me Plumbing Services



- General Mini Excavation & Skid Steer Work
- Livestock Watering
- Waterlines & Sewer Systems
- Residential Services & General Plumbing
- Utility Trenching

**Stan Schrock 660-988-1163
Greentop, MO 660-766-2636**

Electrical/Plumbing

ELECTRICAL SERVICES, Electrical Inspections, Circuit Breakers, Old house and New House Wiring, Outdoor and Indoor Lighting, Service Upgrades, Trouble Shooting.

One Call Fix All. (Free Estimates) 660-220-3077

Miscellaneous

Shayne Thomas, Agent

Make the commitment, and see the difference you create by choosing local.

Thank You!

Miscellaneous

JAGUAR LUMBER

Attn: Land Owners



Buyer of Timber
*All species also Select yard Trees/Logs over 40" diameter,
*Trees are selectively cut to insure optimal Forest Regeneration.

Certified & Bonded | Lavon Gingerich 641-664-2080

Do you need?

Tree work, concrete work, or yard work.

(Free Estimates) 660-220-3077

NEMO TRADER - Advertise with us TODAY!
Phone: 660.665.8500 • PO BOX 809
701 East LaHarpe St, Suite C, KIRKSVILLE, MO 63501

CELEBRATIONS!

PARTY RENTAL

KIRKSVILLE, MO

FOR RENT

- Tables & Chairs
- Tents • Bounce House
- Cotton Candy Machine
- & More!

660-626-5162 or 660-665-9380

VICTORY

Metals & Recycling

Kirksville, MO 660-665-8000
victorymetalrecycling.com

For current scrap prices call or visit our **Facebook Page**

★ **Construction/ Debris Recycling**

Visit Kirksville's construction & debris recycling facility and save trips to the landfill! Take advantage of this service for solid waste removal by bringing your landfill items to Victory Metals C & D recycling facility located at 3602 N. Industrial Rd.

★ **Roll-Off Container Service**

10-20-30-40 Cubic Yard Dumpsters

3602 N. Industrial Rd.,
Kirksville, MO 63501
djanesmvr@gmail.com
www.victorymetalrecycling.com



Lawn/Garden/Landscape

Dutch Garden Nursery

Your Full Service Garden Center

Palms, Ferns: (Tropical Plants) Hibiscus Trees, Mandavella Vine & More
Rhubarb • Berry Plants • Asparagus Crowns • Tomato & Pepper Plants • Herbs

Vine Ripened Tomatoes **READY NOW!**
Bulk Mulch & Bulk Rock Delivery Available!

Lots of Shrubs! Nursery Plants!
HUNDREDS OF TREES!

Wide selection of Bedding plants & everything you need for your flowers pots!

NEW SPRING HOURS:
MEMPHIS LOCATION • 660-883-5650 (Beside Country View Store)
EDINA LOCATION • 660-397-4115 (Home Base)
www.dutchgardennursery.com • Open: Mon. - Sat. 8 AM - 6 PM



Lawn/Garden/Landscape

Visit Peckosh Landscaping for Garden Plants: Tomatoes, Peppers and more. Perennials, Annuals, Hanging Baskets. 23198 Hwy H/Boundary St. just North of the Troy Mills Store

New 3 pt. tillers, heavy duty, gear driven, 7' to 12' starting at \$4,050. 660-874-4455.

TRANSPORTATION

Parts & Services

New/used parts vehicles, semi's, farm/construction equipment, motors/transny's, body parts paint matching yours. Warrantied/delivered. 800-807-9612.

TRANSPORTATION

Trucks, 4x4's, SUV's

1989 F-250 7.3 diesel long bed pickup, 5 speed, southern truck no rust, 124000 miles, new tires, good solid truck, good condition \$4500. Call (217)779-2864

NEMO TRADER • Advertise with us TODAY!

Phone: 660.665.8500 • PO BOX 809

701 East LaHarpe St, Suite C, KIRKSVILLE, MO 63501

Tree Service

TIMBER MANAGEMENT.

Purchasing Walnut, Oak, Maple & Other Species

WE PAY BEFORE WE CUT

BONDED & INSURED

641-895-8209

Est. 1968



Welding

Brad's Welding Shop Is Your Newest Dealer For Arrowquip Cattle Handling Equipment

15 YEAR UNLIMITED WARRANTY

Call Us For All Your Cattle Handling Needs!

Look at all our latest ARROWQUIP video's on our Facebook page

BRAD'S WELDING SHOP

12673 Almond Ave • 1158 Marceline, MO 64658 • 660-376-1158 • www.bradsweldingshop.com



NEMO Trader Classified COUPON

2 Classified Ads for \$5.00

20 cents per word over 20 words

For an additional \$1.00 run in the Kirksville Daily Express one time.

For and additional \$2.00 run in the Saturday Kirksville Daily Express and Kirksville Crier one time each.

Must be Mailed in or brought in along with payment

Picture Ads Not Included with Coupon!

Choose Classification

- Agri-Business
- Announcements
- Employment
- Financial
- Merchandise
- Real Estate
- Rentals
- Real Estate Sales
- Recreation
- Services
- Transportation
- Yard Sales
- Auctions & Estate Sales

Ad No. 1 Each Box Represents a Word (20 words or less)

Ad No. 2 Each Box Represents a Word (20 words or less)

Name _____

Mailing Address _____

Phone Number * _____
this is required*

PO Box 809 Kirksville, MO 63501 • 660-665-8500

Wanted

WANTED DAMAGED OR UNMARKETABLE GRAINS.

CALL CHRIS TAYLOR 660-341-8080

Automobiles

For Sale

2015 CHEVY SILVERADO 1500
Crew Cab WT, 4x4, 5.3L, well equipped, tow, keyless, no rust, 143,000 miles, 1 owner

Save thousands under book! **\$19,500**

ACCELERATORS SINCE "1974"
Kahoka, MO
660-727-3455 or 217-257-1385 ANYTIME

IT'S FREE EVERY FRIDAY

NEMO Trader

701 East LaHarpe St, Suite C, Kirksville, MO 63501 • P.O. BOX 809
660-665-8500 or 660-988-6830
Our New Email: sales@nemotrader.net


CALL US FOR YOUR ADVERTISING NEEDS





Judd Motors Call 660-457-3700
Hwy 63 North, Lancaster, MO

2017 Colorado
crew cab, Z71, V6, 4x4,
heated seats, NAV, new
tires, 1 owner,
only 75k miles, red, only
\$28,900



**Cumberland
Building
Dealer**

2014 Grand Cherokee
4WD, V6, Cloth, Charcoal,
very nice, 131K **\$14,900**

2006 Chevy 1500, 4x4,
5.3L, crew cab, 173k,
dark green, nice truck.
Only \$11,250

www.juddmotors.com | In Business Over 75 Years
Curly and Kevin Judd



**There's
a better
way to get
attention.**

Keep life simple.
Take out an ad.

**WE HAVE YOUR
DREAM CAR!**



**AMERICA'S
CAR-MART**
Keeping You on the Road
car-mart.com

We Offer:

- Peace of Mind Package
- Service Contract Plus
- Accident Protection Plan
- 100% Satisfaction
- Pay Your Way
- Low Down Payments
- Quality Used Vehicles
- Flexible Financing
- Hand Selected Vehicles
- Convenient Payment Options
- Start Your Approval Online
- Over 150 Locations
- 40 Years in Business
- We Buy Cars

660-956-4849 • 2015 North Baltimore • Kirksville

 2010 FORD F150 4WD, 8 Cyl., Red	 2009 MERCURY MILAN PREMIER FWD, 4 Cyl., White	 2015 CHRYSLER 200 AWD, 6 Cyl., Black
 2014 CHEVROLET SILVERADO 1500 4WD, 8 CYL., BLACK	 2010 NISSAN TITAN PRO-4X, 4WD, 8 Cyl., Red	 2014 CHEVROLET IMPALA Limited LTZ, FWD, 6 Cyl., Black
 2014 CHEVROLET CRUZE LS FWD, 4 Cyl., Red	 2011 CHEVROLET SILVERADO 1500 4WD, 8 Cyl., Silver, 4 Doors	 2015 KIA SOUL FWD, 4 CYL., RED
 2014 JEEP CHEROKEE LATITUDE SWDm 4 Cyl., Silver	 2007 KIA SEDONA FWD, 6 Cyl., Gold	 2009 HONDA CIVIC FWD, 4 Cyl., White
 2014 MITSUBISHI OUTLANDER FWD, 4 Cyl., Silver	 2006 FORD EXPLORER LIMITED 4WD, 6 Cyl., White	 2011 GMC YUKON 1500 DENALI AWD, 8 Cyl., Black
 2015 DODGE CARAVAN FWD, 6 Cyl., Black	 2006 MAZDA MAZDA3 FWD, 4 Cyl., Silver	 2011 BUICK LACROSSE FWD, 6 Cyl., Maroon

**AMERICA'S
CAR-MART**
Keeping You on the Road

**Call Now!
660-956-4849**

BURKHOLDER



2015 GMC Sierra 2500HD SLT Z71, 4x4
Crew, 6.6 Duramax, Allison, 58k One-Owner Miles, Oklahoma Truck, Emerald Green Metallic



\$62,900

Full line of accessories Outfit your truck here!

Edina 660-397-2551 51001 State Hwy 15 BurkholderTruckSales.com



2019 Nissan Armada SV, FWD
5.6V8, Auto, 56k Miles, Clean Carfax, Nice-Clean Ride, Come Drive, Silver



2019 Ford F-250 XLT, Crew, 6.2V8
Auto, Only 34k Miles, New Tires, Come See, Nice-Clean Texas Truck, Silver



2016 Chevy Silverado 2500HD WT
4x4, Crew Cab, 6.0V8, Auto, 105k One-Owner Mi, Texas Truck, Well Kept, Maroon



2015 Chevy Silverado 2500HD High Country, 4x4, Crew, 6.6 Duramax, Allison, 123k One-Owner Miles, Texas Truck, White



2014 GMC Sierra 2500HD SLT Z71
4x4, Crew, 6.0V8, Only 66k One-Owner Miles, Texas Truck, Come See, Nice, Silver



2014 Chevy Express 1500 LS
8 Pass, 5.3V8, Auto, Only 58k One-Owner Miles, Rear Heat/AC, Nice-Clean, Dk Blue



2013 Chevy Suburban 2500 LS
9 Pass, 4x4, 6.0V8, 78k Mi, One-Owner, Southern Vehicle, Hard to Find, Nice, Silver



2013 Chevy Express 1500 LT AWD
8 Pass, 5.3V8, Auto, Only 46k Mi, One-Owner, New Tires, Hard to Find, Black



2011 Toyota Sienna LE, 8 Pass
3.5V6, 168k Mile, Local Trade, Extra Clean, Very Well Kept, Perfect Family Van, Black

Financing Options Available

TRUCK GEAR BY LINE-X

RETRACTABLE HARD TONNNEAU COVER

- ▶ HEAVY DUTY ALUMINUM CONSTRUCTION
- ▶ SEALED BALL-BEARINGS ALLOW SMOOTH, ONE-HANDED OPERATION
- ▶ LOW PROFILE DESIGN ENHANCES TRUCK STYLE
- ▶ TEXTURED, MATTE BLACK POWDER COATED FINISH
- ▶ LOCKS IN ANY POSITION
- ▶ SUPPORTS DISTRIBUTED LOADS OF UP TO 500+ POUNDS
- ▶ NO PULL STRAPS, VELCRO, SNAPS OR SPRINGS
- ▶ LIFETIME END-TO-END WARRANTY



TRUCKGEAR.COM |

DON'T JUST PROTECT IT
LINE-X IT
SLIP-RESISTANT SURFACE. PREVENTS RUST & CORROSION. IMPACT, ABRASION & CHEMICAL RESISTANT.

LIFETIME WARRANTY

LINE-X

Quality Brands We Carry



AUTO & TRUCK SALES + ACCESSORIES



YARD SALES

Garage Sale

GARAGE SALE April 23rd
3miles North of Novinger
149 Bethel Ridge Rd.
Wooden Tea Cart, Ship
Clock, Talking Mickey &
Minnie Mouse, Lots More

Auction Sales

Small ads produce
BIG RESULTS!
Ask about our advertising rates to fit any budget.

Moving
Fox Auction LLC
660-341-1453

AUCTION
Directions: From Bloomfield, IA go west on Hwy 2 for 6 miles to Flora Ave., then north for 1.5 miles to site. Watch for signs!!

SATURDAY, APRIL 30TH, 2022 @ 9:30 AM

MACHINERY:Power cart w/ 105hp Perkins, PTO, Hyd & 3 pt•Motor cart w/ 2 yr old engine, hyd•Weusi 8' PTO tiller•NH 489 haybine•NH 7' haybine•JD & MC sickle bar mowers•NH 55, 5 bar hay rake•5 bar hay rake
HOUSEHOLD:22 cu. ft. deep freeze•18 cu. ft. fridge•gas deep freeze•gas fridge•wood energy wood stove•grandfather's clock•brown couch w/ recliners•brown recliner•brown love seat w/ recliners•rose recliner

HORSES, BUGGIES & HORSE RELATED:
•7 yr old Morgan Standard x gelding
•12 yr old Morgan Standard x gelding
•12 yr old Morgan Percheron x mare
open buggy•surrey•2 top buggies•buggy cart•2 wheel cart•several eveners

FARM & SHOP ITEMS:scroll saw•table saw•12" planer•jointer•small drill press•(air)•vice•30" I beam•stationary air compressor•air tank•fuel tank•corral panels•cattle panels•steel posts•wire•wire unroller

ENGINES:Imperial 3 cyl, LC 385, good condition, 30 hp•Ottawa 6 hp 20952 reduction gear•Lister 3 cyl•Duetz 3 cyl(not very old)•Wisconsin•Hatz 3 cyl•2 new small motors•several older motors

GUNS:2 old .22 Ernest D. & Mary rifles•410 shotgun
Kauffman
Chicken
19965 Flora Ave.
Bloomfield, IA 52537

JIB crane 1000 lb lift w/ 12' reach

lots more items online at
FOX AUCTION LLC www.foxauctionservice.com
•• JR. (ALLEN) FOX: 660-341-1453 WILSON FOX: 660-216-9227 ••

Antique Tool & Sportsman Auction

2705 Main St. Unionville, MO
April 30th • 10 am

Tools: Between 400 and 500 unique and hard to find antique hand tools, many are hard to find and unusual. Stanley planes to include Bedrock and others, Stanley Salesman sample box, Stanley power plane, Stanley marking gauge, 3 cabinet saws, some newer tools. **Machinery/Vehicle:** IH 200 tractor in very nice condition, quick hitch: disc, plow, carry all and 3 sickle mowers, 1990 Olds eighty eight, homemade cargo trailer, car dolly. **Antiques:** Morgan and Peace dollars, silver half dollars, Sterling and silver plate items, cast iron skillets, well pumps, guitar, 3 wheel bicycle, more antiques by sale date. **Sportsman items:** Excam 22 revolver, Heritage 22 revolver, Hi Point 9mm pistol, Browning gold hunter 12 ga, Marlin goose gun 12 ga, Winchester 67 .22, 2 Model 12 Remington 22, H&R Topper 158 12 ga, Iver Johnson 16 ga, Stevens 87A .22, Stevens 620 16 ga, 1870s Peabody drop block rifle, Traditions black powder 50 cal, Ammo to include .22, 9mm, 12 ga, 16 ga, 4-10, several holsters, fishing poles, tackle boxes, hornet nests, new Minn Kota trolling motor, boat gas tanks, 3hp antique boat motor, more sportsman items by sale date. Food and restrooms available.

SEE OUR FACEBOOK PAGE FOR PHOTOS

AAA
ALTISER
AUCTION & APPRAISAL
KRIS ALTISER
660-626-4960

L & S Nemo Auction
MERCHANDISE AUCTION
Starts in May,
2nd & Friday Nights @ 6:30pm
Taking Consignments now!!

Call/Text Lee
660-988-3818

22486 Michigan Trail Kirksville MO 63501.

649220

NEMO TRADER • Advertise with us TODAY!
 Phone: 660.665.8500 • PO BOX 809
 701 East LaHarpe St, Suite C, KIRKSVILLE, MO 63501

**There's
 a better
 way to get
 attention.**

Keep life simple.
 Take out an ad.



GHEENS TRUST
AUCTION

30709 BERGER ROAD - KEYTESVILLE, MO

WEDNESDAY, MAY 11, 2022 @ 12 NOON



Selling 114 acres M/L with home and improvements in 3 tracts - Also selling 70 years of accumulation to include quality antiques, primitives, tools and much more at this large country auction. Lots of great items, don't miss it! Real Estate Sells First at 12 Noon!

TRACT 1: 76 Acres M/L currently in pasture - Over 85% of the property is open with remainder in wooded draws or structures - Farm has perimeter fencing & some cross fencing - 2 Ponds - Older 40'x40' Hay barn/livestock shed - Soils consists of Armstrong silt loam & Armstrong clay loam, slopes are from 5-14% - Northern border with need fenced between tract 1&2 if same buyer doesn't buy both.

TRACT 2: Nice older 3-4 bedroom country home (1,344 sq ft) situated on 3 acres M/L - Home has kitchen open to dining room - Family room - 3-4 bedrooms, 2 smaller ones - 1 Bath - Laundry/Utility room - Detached garage 24'x24' - 2 Small sheds, summer kitchen & celler shed - Nice 24'x36' machine shed - Nice smaller acreage with lots of amenities * Southern border will need fenced between tract 1&2 if same buyer doesn't buy both

TRACT 3: 38 Acres M/L lying along Prather Ave on 2 sides - 75% is open grass land with remainder in wooded draws - Soils consists of Armstrong silt loams & Armstrong clay loams

REAL ESTATE TERMS: Sells at 12 Noon - Tract 1 & 2 will be surveyed, tract 3 will not and will be sold by recorded legal description - Tract 1 will be sold by the acre x the money - Tract 2 & 3 will be sold by the entirety, not by the acre! 10% down auction day with balance due and possession given at closing (45 days) - Property sells as is where is with no contingencies - Property sells with trustee's confirmation - Fencing is buyers responsibility

Elva Marian Gheens Trust * Judy Boss & Sally Guilford, Trustees
DALE LINNEMAN, ATTORNEY

IMAN AUCTION COMPANY
MORE INFO @ IMANAUCTION.COM | 660-388-6235

McAfee Auction Service, LLC
 375 S Johnson • Kahoka, MO
 660-727-3796
 www.mcafeeauctionservice.com

Clark County, MO
LAND AUCTION

Sale conducted at the CARE Building
 located at 451 N. Vine St. Kahoka, MO

132 ACRES/4 TRACTS
 (Subject to Final Survey)

Lying in Sections 17, 19 & 20 Twp. 64N, R7W and
 Sect. 25, Twp. 64N, R8W Clark County MO.

**Tuesday,
 April
 26TH
 at 6 PM**

- Productive Tillable Cropland
- Building Sites
- Woodlands
- Hunting

THE ESTATE OF DORORTHY IRENE KIRCHNER
WILL SCHWICKERATH, EXECUTOR

McAfee Auction Service, LLC
 375 S Johnson • Kahoka, MO
 660-727-3796
 www.mcafeeauctionservice.com

ONLINE ONLY COIN AUCTION
LOTS START ENDING
SUNDAY, APRIL 24TH - 1PM



Selling a nice selection of Gold coins, Half Cents, Indian & Lincoln Cents, Silver Quarters, Silver Half Dollars, Morgan & Peace Dollars, Proof Sets and more.

SOMETHING FOR ALL COLLECTORS

BROWNFIELD WAREHOUSE
AUCTION

1415 RILEY BLVD - MOBERLY, MO

SATURDAY, APRIL 30, 2022 @ 9 AM

SIGNS - GAS & OIL MEMORABILIA - 50 OLD GAS PUMPS, PARTS & NOZZLES
- 300 ERTL DIE CAST COLLECTOR BANKS - STAINED GLASS WINDOW -
MISSOURI BRICKS - ARCHITECTURAL SALVAGE - ANTIQUE FURNITURE -
LAMPS - SAFES - PICTURES - PAINTINGS - PRINTS - MODERN
FURNISHINGS - PRIMITIVES - TOOLS - COLLECTIBLES - RESTAURANT
BOOTHS - OFFICE FURNITURE - BUILDING MATERIALS - OUTDOOR ITEMS
- TRACTOR - SEMI TRAILER VAN BODY - COMPRESSORS & MUCH MORE!!!

AUCTION PREVIEW - FRIDAY, APRIL 29, 2022 | 1-5 PM



IMAN AUCTION COMPANY | 660-388-6235 | ImanAuction.com



WE'VE GOT YOUR DREAM JOB ON A SILVER PLATTER

Keep up-to-date with dozens of top job postings throughout your local area. Find your perfect new permanent or temporary position in the classifieds!

McAfee Auction Service, LLC
 375 S Johnson • Kahoka, MO
 660-727-3796
 www.mcafeeauctionservice.com

TIMED ONLINE ONLY
ESTATE MACHINERY AUCTION
LOTS START ENDING
THURSDAY, APRIL 28TH - 10AM



Selling JD 4440 2WD cab tractor w/ JD 148 loader; AC 7020 2WD cab tractor; Hay & Hay Equipment; Small Tillage Equip.; Rotary Cutter; Farm Related; Salvage Iron.

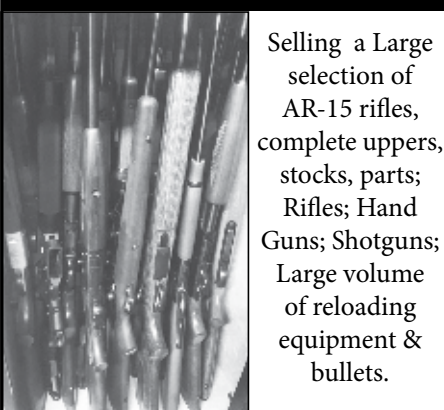
LOCATION: 11997 137TH ST. LABELLE, MO
PREVIEW: SATURDAY APRIL 23RD 9 A.M. - NOON

THE ESTATE OF NORMA R. HARVEY

McAfee Auction Service, LLC
 375 S Johnson • Kahoka, MO
 660-727-3796
 www.mcafeeauctionservice.com

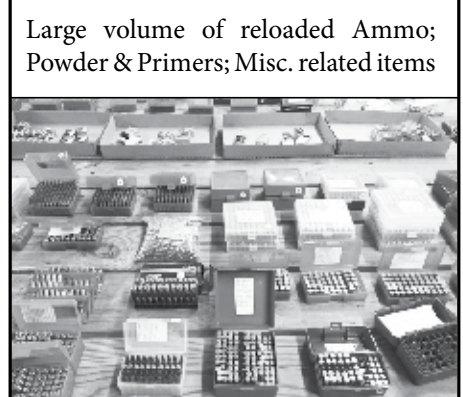
2 DAY TIMED ONLINE ONLY
ESTATE GUN & AMMO AUCTION

DAY 1: TUES MAY 10TH
LOTS START ENDING AT 10 AM



Selling a Large selection of AR-15 rifles, complete uppers, stocks, parts; Rifles; Hand Guns; Shotguns; Large volume of reloading equipment & bullets.

DAY 2: TUES MAY 17TH
LOTS START ENDING AT 10 AM



Large volume of reloaded Ammo; Powder & Primers; Misc. related items

THE ESTATE OF DAN LAGE

Auction Sales

Millard Real Estate & Personal Property Auction
The late William K. Jr and Verna M Drennan

Saturday, May 14, 2022 at 10:00 a.m.
Directions: 27362 Seven Oaks, Millard, Missouri. From US Highway 63, turn East on State Highway KK for 0.8 miles, turn left on Hedgepath Lane for 1.5 miles, then turn left on Seven Oaks Lane for 0.4 miles to the auction location. Look for signs the day of the sale.
Real Estate: Located five miles South of Kirksville, 9 miles North of LaPlata and within minutes of the Kirksville Regional Airport, this 3 bedroom, 2 bath home on 60 acres +/- would make a great country get away for your family. The split foyer home features 2 fireplaces, 1 upstairs and one downstairs, an open floor plan, a master bedroom with a large walk-in closet, a finished basement with a utility room and an attached 2 car garage. The home does need some work. The property has various sized white oak trees with the balance in woods and open pasture. There is an active creek on the East property line and a large pond providing an abundance of hunting. The property has newer fencing.
The real estate will sell promptly at noon. If you would like to schedule your personal showing, please call Scotty at 573-356-4405.
***See Terms and Conditions for Purchase of Real Estate below.**
DOWN PAYMENT: 10% of the contract purchase price will be due upon acceptance of the Sales Contract. Personal or Cashier's Checks will be accepted. This is "AS IS, WHERE IS" and is non-refundable. **CLOSING:** Closing shall be within 30 days of the auction date.
Storage Buildings: 8' x 12' wooden utility shed; 18' x 10' x 98" carport; 12' x 1' metal utility shed with loft.
Farm Equipment: AC 175 front end loader, diesel, crophusler 3 point hitch; Swisher 22T gas log splitter; Landpride 3 point posthole digger with 12" auger; Industrial Plus rear tine tiller; Tuffline 3 point 7' blade; John Deere 3 point 7' brushhog; 3 point bale spike; rolls of 6' woven wire; various T posts; 2 fuel tanks with stands; 10' pull type disc; round 4' metal water tank;
Vehicles and Accessories: 1999 Ford F250 Super Duty 4x4, extended cab, 5.4 Tritan gas V8, solid truck, has rust on rocker panels; Kawasaki Mule 4010 4x4, fuel injected, power steering, manual tilt bed, 703 hours; 2 wheel motorcycle trailer; Diamond plate Better Built truck tool box;
Household Items: Metal patio set; self standing porch swing; Savor Pro gas grill; portable pet cages; Platinum 614 electric wheelchair; various shelving; metal tea cart; 6' plastic folding table; like new upright freezer; large wooden wardrobe; Hisense flat screen TV 50"; oak China hutch; oak curved front curio cabinet;
Antiques and Collectibles: Antique wooden hall tree; safari dressing screen; Tempus Fugit grandmother clock; Christmas villages; metal decorative tricycle; antique wooden rocking chair; miscellaneous oil on canvas; 12 Disciples table lamp; retro kitchen table with 4 chairs; antique oak secretary; some Carnival glass;
Outdoor Equipment and Tools: John Deere lawn cart; Craftsman 1.5 HP 3 gallon air compressor; aluminum folding walk plank; Craftsman 10" miter saw with stand; 6" Craftsman bench grinder; Craftsman tool box; lots of miscellaneous hand tools; Milwaukee Sawzall; SF40 Stihl gas weed eater; Ryobi gas powered drill; Remington knife with sheath;
There will be many more items at this auction too numerous to mention.
GO TO WEBSITE FOR FULL LISTING & PHOTOS

SCOTTY'S AUCTION SERVICE
573-356-4405
Michael Cunningham 660-651-2288 • Paxton Pittman 660-346-1956
WWW.SCOTTSAUCTIONSERVICE.COM

NOTICE
Consignment Auction
August 6, 2022
AT BEN BORTRAGER FARM
26803 STATE HWY K, MACON, MO
CONSIGNMENTS OF MACHINERY, ANTIQUES, COLLECTIBLES, HOUSEHOLD & TOOLS
Taking Consignments until Sale time.
Items to be listed on the sale bill need to be in by July 1. Send consignments to BEN BORTRAGER, 660-605-3368.

....AUCTIONEERS....
ROBERT HELMUTH, 715.600.4827
SCOTTY KUNTZ, 573.356.4405
MICHAEL CUNNINGHAM & KENNETH YODER

NEMO TRADER • Advertise with us TODAY!
Phone: 660.665.8500 • PO BOX 809
701 East LaHarpe St, Suite C, KIRKSVILLE, MO 63501

Macon Real Estate Auction;
Sam Schmidt
Thursday, April 28, 2022 at 5:00 p.m.
Directions: 34652 Lion Ave, Macon, Missouri. From US Highway 63 South at Macon, follow State Highway YY East 2.4 miles turn right on Lion Avenue for 0.7 miles. The property will be on the left. Look for signs the day of the sale.
Real Estate: This 3 bedroom, 2 bath home with optional office on 17.9 +/- wooded acres was built in 2001. In 2010, the 18' x 30' addition was built with the master bedroom and bathroom. In 2012, new kitchen appliances were added, in 2017 new ground source heating was installed, in 2020 the kitchen and living room were remodeled, and 2021 new flooring was installed in the hallway and living area. The property includes a 30'x36'x9' shop that was built in 2003 with concrete floors, closed cell cellulose insulation on the walls and ceiling, Blandex on the walls, ceiling fans, 220 plug and a 90% efficiency furnace. Also included is a 30'x36'16' shop that was built in 2012. It includes a 30 amp plug for an RV and has a 20'x36' three sided lean to that was added in 2017.
The real estate will sell promptly at five o'clock. If you would like to schedule your personal showing, please call Scotty at 573-356-4405.
***See Terms and Conditions for Purchase of Real Estate below.**
DOWN PAYMENT: 10% of the contract purchase price will be due upon acceptance of the Sales Contract. Personal or Cashier's Checks will be accepted. This is "AS IS, WHERE IS" and is non-refundable. **CLOSING:** Closing shall be within 30 days of the auction date.
GO TO WEBSITE FOR FULL LISTING & PHOTOS

SCOTTY'S AUCTION SERVICE
573-356-4405
Michael Cunningham 660-651-2288 • Paxton Pittman 660-346-1956
WWW.SCOTTSAUCTIONSERVICE.COM


JOHNSTON AUCTION & REAL ESTATE
JAMES 573-473-4904
REAL ESTATE & LIQUIDATION AUCTION
Sat., April 23rd @ 10 a.m.
Location:
17636 Mon. Rd 971
Holliday, MO
Ranch Style Home on 5 1/2 Acres
Also selling tractor, mower, truck, household, tools visit www.jamesjohnstonauction.com
for details & pictures.
Patricia Kyro & the Late Jim Kyro
jamesjohnstonauction.com

Public Auction — **Trenton, MO**
AUCTION
Public Auction for Linda & the late Quentin Brown
246 North Hwy 65 • Trenton, MO 64683
Saturday, April 23, 2022 ★ 10:00 A.M.
SHOP TOOLS, OUTDOOR ITEMS, 4 WHEELER, MISCELLANEOUS Stihl 290 AND 250 chainsaw; Clarke 130EN mig welder w/tank; big battery charger; bench model drill press; Clarke air compressor; Lincoln 225 welder; power washer, 13 hours, Honda motor; torch set w/gauges and cart; floor jack hydraulic and air; shop fan; block and tackle; Poulan Pro pole saw; chains and binders; JD and misc cylinder; Northstar log splitter, Honda motor; portable A/C; 1988 Honda 300 fourtrax 4 wheeler; Milwaukee battery powered tools; Stihl battery chainsaw; Hitachi strip nailer; 3 JD planter boxes; JD mud flaps; a lot of miscellaneous; Dewalt chop saw; Milwaukee sawzall; 20gal parts washer; grinder; misc lights for trailers; Stihl leaf blower; Harley parts; slow moving triangles; metal desk; retro table and chairs; sand blaster; clevis; misc tractor weights; a lot of shop manuals for antique tractors; Sentry valueguard safe; bicentennial rocker 1776-1976; treadle sewing machine cabinet
PICKUP AND CARPORT 2004 GMC 2500HD crewcab SLE, diesel, 4x4, 118,000 miles, pw, pl, auto, push button 4x4, good rubber, bed liner, seatlite tool box, grill guard, excellent truck, maintained the best; 25' x 35' carport
IMPLEMENTS 5' box blade; 2 bottom pull type plow; tractor weights; 2pt 3 bottom plow; tractor tires 12.4 x 38; 3 bottom JD plow; 1 bottom IH horse plow; 2pt short line 7' blade; 490 4 row wide planter; 3pt bottom plow; 3pt Woodsman pto buzz saw; 1 bottom plow for cub Farmall; 5x8 Woodworth trailer; 2pt conversion to 3pt; 2 - 2pt drawbars; 5 bottom pull type JD; 2 - 4 bottom pull type JD; 5' single gang disc; 4 bottom JL case pull type; 3 bottom 2pt IH plow; 3 bottom pull type IH plow; 8' IH 2pt blade; 2 bottom pull type IH plow cylinder lift; JD 3 bottom 55A cylinder lift; 2 bottom JD pull type steel wheel; 1 bottom cub plow; 5' 3pt landscape rake; JD 7 wheel packer pull type; 6' 2pt McCormick; Swisher 66" offset pull type mower; DR 60" offset pull type mower; 6 x 10 Woodworth trailer w/ramp and assist; JD 2 bottom plow; JD 3 bottom plow; 2 row IH 2pt cultivator; DR 60" field and finish mower, 14.5 hours, 500cc; Swisher 66", 20 hours, 540cc, finish mower; pull behind lawn sprayer w/wand; 1 row planter JD; JD 952 10' oak bed wagon, super nice, restored
TOY TRACTOR AND IMPLEMENTS 1950's & present, 40 year collection, primarily JD, approx 110 or more; many precision models and toy farmer series included.
TRACTORS 3 Farmall cubs SN 101826 1800, SN 112342 1803, SN 94060 1800 clean little tractors; Farmall 300, good tin, weather cracked rubber, TA, make parade ready, solid tractor w/wheel weights; Farmall H, new rubber, restored, rear weights, tool box, clean nice tractor, SN 301066XI; JD low radiator G SN 2000, new rubber, clean nice tractor, rear step, good paint; Farmall 460, good paint, decent rubber, front weights, rear fenders, rear weights, nice clean tractor SN 10769 S-Y; JD 630 power steering, new rubber, restored, beautiful tractor, rear fenders, w/brass tag 2 cylinder certified SN 6308683
Auctioneer Note: Good quality. Tractors sell at noon toys to follow.
★ Lunch Served on Site ★
For Full Listings & Photos go to www.auctionzip.com ID # 38454 or shomemoreauctions.com
Terms: Cash, check with proper ID. Nothing removed until settled for. Not responsible for theft, accident or inadvertent error in advertising. Statements made day of sale take precedence over printed material. We have the right to refuse bids and/or bidder.
ALLEN AUCTION SERVICE
Princeton, MO
Jerry Allen, Owner/Auctioneer • Cell (660) 953-0346
Auctioneers: Ryder Allen, Bob Peniston, Trent Peniston, Trevor Peniston, Lonnie Sewell, Ed Arnold 638657b

ANTIQUQUE & COLLECTIBLE AUCTION
WEDNESDAY, MAY 4 • 10:00 AM
AUCTION TO BE HELD ONSITE: 210 ELM ST., MENDON, MISSOURI
Auction located on the very north end of town. At Northwest School/Hwy 11, turn west on Main Street for 3 blocks to Third Street, then head north on Third Street for 4 blocks to sale location. Auction signs posted sale day. A very nice, clean antique auction that you won't want to miss! Make plans to attend this sale.
ANTIQUQUE FURNITURE: Oak Murphy Bed (nice, original finish, a rare find in this condition); Oak sideboard (wow); Oak hall seat (hat hooks, mirror); Oak ice box (top load, original brass); unusual Walnut wash stand (marble top, brass towel rail); two door Pine corner cabinet; painted two door chimney cabinet; Pine kitchen table; ladder back farm chairs (set of 4); round Oak dining table (claw feet, 3 leaves); Oak pressed back chairs (2 pair); pie safe; Oak writing desk (shaker style, pigeon holes); rocking chairs (Oak pressed back, painted, wicker, Maple, sewing, more); camel back trunk (nice original); flat top trunk; Oak writing desk (drop front, Queen Anne style); Oak dresser (2 drawer, w/ wishbone mirror); Oak vanity (w/ 3 section mirror); Cedar chest (Lane, waterfall); Oak dresser (bow front); Oak washstand; parlor table; wrought iron beds (full, single); Oak dresser (serpentine front); wood stools; wood benches; wood chest; tongue-groove doors (x4); wood doors (x3); sleigh bed (wood, full); Cedar blanket chest; Oak china hutch; wood ironing board; and other items scattered throughout the sale.
ANTIQUQUES, COLLECTIBLES, MORE: Metal milk crates; brass bucket; spring wagon seat; English biscuit jar (with lid); coal hod; horse head bookends; bracket lamp; kerosene lamps (including brass Aladdin, etc); iron shelf brackets; copper fire extinguisher; old fruit jars; watering can; copper bucket; egg baskets; pictures (old prints including Lone Wolf, Pinkie, etc., Remda oil painting, more); cheese box; new diamond wood cook stove; round wash tub; wood boxes; wood sock form; shallow woven southwest basket; brass-copper spittoon; mantel clocks (nice key wound); hand carved goose decoys; sewing baskets; wood dough bowls (round, ovals); stone crocks and bowls (Watt, Blue band, McCoy, Shawnee, others); stoneware pitchers (Franciscan Wheat pattern, Watt, others); Franciscan "Desert Rose" china; Pyrex colored bowls; depression glass canisters; vintage egg mold pan; wall pocket; cast iron muffin pan; cast iron round griddle (14", w/ handle); cast iron horse; cast iron pot; cast iron bench ends; kitchen primitives; stoneware 4g butter churn; 4g crock; chamber pots; Fostoria etched stemware; eggshell Nautilus china; Iris and Herringbone (vase, bowl, candle); Gone With The Wind Lamp; depression glass; carnival glass (blue, Imperial Windmill Marigold, other); Anchor Hocking forest green stemware; doilies, dresser scarves, linens; quilts (hand stitched); Pendleton wool blanket; Hen on Nest; hand painted china (celery, plates, bowls, more); beautiful English Doulton pitcher and bowl set; Singer sewing machine (domed wood case); hand painted wood fireplace screen; horse weather vane; 45 records; Uncle Henry pocketknife; buttons; and many more items to be discovered on sale day!
HOUSEHOLD, CHICKEN HOUSE, MOWER: Heavy Pine living room set (sofa, 2 rockers, end tables, coffee table); pressure canner; Bissell carpet shampoo machine; radios; rugs; books; misc. brass; Kitchen Aide mixer; usual run of pots, pans, dishware; glass casseroles; pie plates; silverware; cook-books; crock pot; waffle maker; electric coffee pot; Pfaltzgraff canister set; Nagoya china set; microwave; four poster full size bed; chest of drawers; yard tools (rakes, shovels, mauls, hoes, potato forks, silage fork, scoop, more); gas cans; water hoses; yard cart; battery charger; John Deere LA135 Riding Mower (22hp, 387 hrs); Echo chain saw; step ladder; yard statues, bird baths; metal plant stand; Like New Chicken House (8'x10', galvanized metal siding and roof, easily moved); woven wire panels (x7); and much more! A sale you won't want to miss!
JOANN FOXX ESTATE
TETER AUCTION COMPANY, LLC
FOR ADDITIONAL INFORMATION, CONTACT:
AUCTION MANAGER
David May: (660) 973-9523
Office: (660) 963-2461

Double YOUR IMPACT with Print & Online ADVERTISING!

AUCTION
SATURDAY, APRIL 30, 2022 10:00 AM
SALE TO BE CONDUCTED AT THE PROPERTY LOCATED
6413 - 145TH STREET, HEDRICK, IOWA
North of Agency on the Agency-Hedrick Road approx. 6 miles to 145th Street, then 1 mile East OR South of Hedrick on the Agency-Hedrick Road approx. 2-1/2 miles
Auction Signs Will Be Posted
FURNITURE & HOUSEHOLD ITEMS: Maytag auto. washer & elec. dryer; Apartment-size refrigerator; Like new 5-pc. bedroom suite with king-size sleigh bed, mattress & box springs, 2 matching nightstands, large high boy dresser w/mirror & 5-drawer gentleman's matching chest. This set is less than 4 years old, absolutely like new; 4-pc. French Provincial bedroom suite with full-size 4-poster bed, dresser w/mirror & matching nightstand; Chromcraft dinette table w/5 matching chairs; (4) Leather upholstered bar stools; Newer microwave; 6' metal baker's rack; Assst. of pots, pans & dishes; 4-drawer file cabinet; 35-gal. aquarium w/all accessories & base cabinet; Large asst. of books & DVD's; Home decorating décor; Canning jars; Gas grill.
ANTIQUQUES & COLLECTIBLES: Antique red velvet upholstered fainting couch, like new; Antique Victorian hand-carved rocking chair; Antique child's rocker; Old wooden straight chairs; Old lanterns; Several Melody in Motion musical porcelain figurines, NIB; Assst. of figurines; Old cookie jar; (2) Old wooden barrels; Antique clear glass water jar; Glass-top fruit jars; Assst. of Coca-Cola collectibles incl. clock & signs; Assst. of beer signs incl. Budweiser clock & Miller; Large collection of Playboy magazines, from 1960 to 2006. **SPECIAL MENTION:** Harley Davidson countertop slot machine, works.
GUNS & AMMO: Connecticut Valley Arms Optima model 50-cal. black powder rifle, NIB; Harrington & Richardson 38-cal. revolver; American 38-cal. revolver; Approx. 25 boxes of 12, 16 & 20-gauge ammo. **GUN PERMIT REQUIRED FOR THE PURCHASE OF ALL FIREARMS.** NWTFF 2001 Official stamp frame; NWTFF framed Medallion, 1976 - 2002; Large asst. of rods & reels, tackle & fishing lures; Military patches; Large asst. of deer antlers & sheds.
TRACTOR, EQUIPMENT & TOOLS: 2012 Case 50B tractor, cab w/air, FWA, reverser, 3-pt, 354 hours, sells w/Case L350 quick-attach loader w/joystick. This tractor is like new inside & out & well-maintained; Land Pride 6' 3-pt. brush cutter, like new; Near new Land Pride 6' 3-pt. blade; Set of loader pallet forks.
ATV & LAWN MOWERS, INVALID SCOOTERS & TOOLS: 2020 Cub Cadet Challenger MX750 side-by-side, 4x4, full cab w/heat, 62 actual hours; 2020 Cub Cadet zero-turn Pro-Z 700 riding lawn mower, w/Kawasaki engine, 72" deck, tilt wheel, 261 actual hours; John Deere X540 lawn mower, 54" deck, 740 hours, hydro, like new; Pride 4-wheel invalid scooter; Buzzaround 3-wheel invalid scooter; DR 3-pt. PTO chipper/shredder; Fimco pull-type lawn sprayer; Pull-type lawn spreader; Delta 6" jointer/planner; Acetylene torch w/hoses, gauges, tanks & cart; (2) New alum. folding ramps; Large asst. of hand tools; Hardware cabinets & hardware.
AUCTIONEER'S NOTE: Mike has sold his acreage and is moving to a smaller home. Mike was very particular in the quality and the maintenance of his possessions. Everything has been kept inside and is in outstanding condition. Be with us on sale day. See pictures on our website - www.almartinauctions.com.
TERMS: CASH/ GOOD CHECK POSITIVE ID REQUIRED
MASTERCARD/VISA DEBIT/CREDIT CARDS
All property must be settled for before removal - All items sold as is where is - Not responsible in case of accidents. Announcements made day of sale take precedence over any advertising.
MIKE CROUSE, OWNER
AL MARTIN AUCTION COMPANY, LLC
307 Church Street, Ottumwa, IA 52501 | Phone: 641-682-5465 | www.almartinauctions.com

FIND THE PERFECT PET FOR THE PERFECT PRICE IN THE PERFECT PLACE FOR DEALS
Find the stuff you want and sell the stuff you don't with the newspaper classifieds.




Semi-Annual Consignment Auction

Saturday, May 7, 2022 at 10:00 a.m.

Directions: 28251 US Highway 63 North, Macon, Missouri. From US Highway 36 travel approximately 2 miles North of Macon to Scotty's Auction Barn and Event Center on the West side of the road. Watch for signs the day of the sale.

Numerous Consigners: We will be selling at auction tractors, construction equipment, farm implements, vehicles, campers, boats, etc. This will be a large auction so consign early for the most advertising and favorable auction lot location.

Now accepting consignments from everywhere!



573-356-4405

Michael Cunningham 660-651-2288 • Paxton Pittman 660-346-1956
WWW.SCOTTSAUCTIONSERVICE.COM



CENTURY 21
Team Elite

LAND AUCTION

233.2 AC± | 2 TRACTS
MERCER CO, MO
5/17/22 AT 10:00 AM
COUNTRY WOOD
707 GRANT ST | PRINCETON, MO

WHITETAIL PROPERTIES REAL ESTATE, LLC
STEPHEN STOCKMAN, AGENT (660) 923-1242
CENTURY 21 TEAM ELITE
DON WILBURN, AGENT (660) 626-3710

IN COOPERATION WITH WHITETAIL PROPERTIES REAL ESTATE, LLC (0000000000) Jefferson, KY Agent; Missouri Broker License # 200303232; Joe Gaudin, Director; Ranch & Farm Auctions, 217 299-0332; Stephen Stockman, MO Land Specialist for Whitetail Properties Real Estate, LLC 660-9151242; Jeff Probst, Agent for Whitetail Properties Real Estate, LLC 660-209-0362; Don Wilburn, Agent for Century 21 660-626-3710; Cody Lawlerman, MO Auctioneer License, 1027

RANCHANDFARMAUCTIONS.COM
CENTURY21.COM



EQUIPMENT & TOY CONSIGNMENT SALE

Allen Auction Sale's Lot, Hawk Point, MO
SATURDAY, APRIL 30, 2022 @ 9:00 AM

Directions: Allen Auction Sale's Lot. From Hawk Point, MO, Take Hwy 47 South 2.5 miles, Auction on Left Side. Watch for Signs Day of Auction.

Please Note: We will be checking in machinery **Saturday 4/23/22** from 8-4 & **Sunday 4/24/22** from 9-4. We will also be unloading & checking in machinery all week. Look forward to seeing you!

COMBINES & HEADS; TRACTORS; FARM EQUIPMENT; VEHICLES; CONSTRUCTION; NEW SKID LOADER EQUIPMENT; HAY EQUIPMENT; TRAILERS & WAGONS; GUNS, AMMO, SUPPLIES & FISHING EQUIPMENT; RECREATION; LAWN & GARDEN; SHOP EQUIPMENT & TOOLS; MISCELLANEOUS.

Auctioneers Note: We will be running 2 auction rings. Please come prepared with extra bidders. Any questions on any of the equipment, give us a call at the office. Thanks Nick and Kyle.

ALLEN AUCTION & REAL ESTATE SERVICE LLC
 (636) 338-4805 • Hawk Point, MO • www.allenauction.net

The Auctioneers

Nick Allen (636) 358-2900 Kyle Allen (636) 236-2344

Fax (636) 338-4823 • E-mail office@allenauction.net

For updates on list & photos check our website
WWW.ALLENAUCTION.NET

Estate Tag Sale

Friday April 29 8:00 AM - 4:00 PM
 Saturday April 30 9:00 AM- 3:00 PM

Located at 401 Main Street in Keokuk Iowa.

Household & Misc.: Large sectional, sofa, love seat, numerous occ. Chairs including Hi-back & ect., Several dining room table and chair sets, dinette sets, clour water cooler, Hisense portable air conditioner, two flat screen TV, Frigidaire mini fridge like new, 3 piece full size bedroom outfit, 3 piece queen size bedroom outfit, queen size memory foam bed, queen size bed, full size bed, several china cupboards, four stack oak bookcase, large selection of coffee tables, end tables, lamp tables, and hall tables, Iowa Hawkeye bench, nice patio table with six chairs and umbrella, very large selection of various size area rugs, large selection of pictures and frames, Singer sewing machine, wooden shelving, plastic shelving, fans, misc. Household items, step ladders, some tools, lawn and garden tools, two sets of Dunlap golf clubs, plus more!

Antiques: Halls safe co. Combination steel safe, Oak library table, set of 5 wooden auditorium chairs, cement wheel barrel, peerless perfect balance scale (damaged).

Repo: Magic Chef gas kitchen cookstove like new! Tanning Bed: Like New Pro-Sun 20 plus tanning bed.

Office Supplies: Numerous various size wooden and metal desks, several desk chairs, various office chairs, large selection of name brand file cabinets including Laterals, Four drawer & two drawer, floor protectors, vintage leather settee, several vintage leather chairs, large assortment of bookcases and shelves, various size plastic plants, paper shredders, plus more!

Cooler & Misc: 55 two door beer cooler (older), bar stools, Industrial floor scrubber!

Multi parties including several estates.

Terms: April 29 8:00-12:00 Tag Price. April 29 12:00-3:00 25% off. April 30 9:00-12:00 50% off. April 30 12:00-3:00 75% off.

Tag Sale
 arranged by Sargent Auction if any questions please call:
Tony Sargent- 319-520-5340

SMALL ANIMAL AUCTION

Saturday, April 30th

To be held at the
SCHACHTELE BARN - KEYTESVILLE, MO

From Hwy 24 at Keytesville, take Hwy 5 approx 4 miles to site w/ brown barn/green roof on the West side of the road, or from Hwy 36 at Marceline exit take Hwy 5 South, approx. 16 miles to site. Follow Auction signs!


Starting @ 11:30 am

We will start with Misc. Items Outside & Follow with Small Animals approximately 12:00 noon. Expecting Chickens, Geese, Ducks, Turkeys, Rabbits, Goats & Many other Small Animals!

We are NOT accepting any HOGS! All Out of state Animals to be Sold MUST Have Proper Health Papers!
Lunch Served • Call for More Details!
Tony Schachtele 660-413-3250
WE APPRECIATE ALL CONSIGNMENTS!

Terms Cash - good Check with Proper ID
 We are **NOT** Responsible for Accidents to Man, Woman, Child, or Animal. We are **NOT** Responsible for Lost, Stolen, or Damaged Articles or Property.

NEMO TRADER • Advertise with us TODAY!
 Phone: 660.665.8500 • PO BOX 809
 701 East LaHarpe St, Suite C, KIRKSVILLE, MO 63501



Semi Retirement AUCTION

Directions: From Hwy 2 & V56 junction go north to 255th street and east to site. Watch for signs!

FRIDAY, APRIL 29, 2022 @ 9:30 AM

FARM & SHOP ITEMS: Efc0 Trimmer(new), Jonsered CS 2238 chainsaw w/ 16" bar, Jonsered 2054 chainsaw, Efc0 MT5200 chainsaw w/ 20" bar, Yanmar engine, Honda engine 13 hp, diesel & gas engines, hd cement mixer on wheels, steel hay track & hangers w/ carrier & 4 tine grabble fork.

HORSES: 3 yr old bay gelding w/ 3 white socks & star, TSS, sire Harrystar Ranger, dam standard bred American saddlebred x, 16HH, 3 yr old standard bred mare, 16HH, green broke, 4 yr old standard bred brood mare (Hanover breed), 2 Percheron yearling stud colts black w/ white stars, 50 small square bales of grass mix hay.

HOUSEHOLD: Sorghum cooking equipment, 4'x16" pan, 18" press.

LIVESTOCK ITEMS: organic dairy calves, Zero bulk tank, 600 gal w/compressor, Mueller bulk tank, 400 gal w/compressor, cattle head gate, cow tie stalls, dividers & water bowls, SS milk strainer.

MACHINERY: Detroit diesel power unit 65hp, Perkins power unit with clutch, JD 24T baler, JD 14T baler, 2-IH hay mowers*2 MC #7 mowers regular gear 6' bars, 1 w/ tongue truck, NI hay rake with tedder, David Bradley hay rake, 4 bar, Oliver #2 hay loader, NI Eastway hay loader.

MISCELLANEOUS: Dinner bell, new bee hives & equipment, T-14 poly Martin birdhouse w/pole.

Edward & Clara Stutzman
 11927 255th Street, Milton, IA 52570

lots more items online at
www.foxauctionservice.com

FOX AUCTION LLC

JR. (ALLEN) FOX: 660-341-1453
WILSON FOX: 660-216-9227

MULTIPARTY AUCTION

SUNDAY, MAY 1ST AT 1PM

MARION COUNTY FAIRGROUNDS
 (CATTLE BARNS)

1000 NEW STREET PALMYRA, MO
ANTIQUES/PRIMITIVES • FURNITURE • APPLIANCES/DISHES
• TOOLS/GUNS/KNIVES



More pictures and information at:
www.hammondwatsonauctionservice.com

Hammond & Watson AUCTION SERVICE
 Lionel Hammond & Kirk Watson
 573-406-3877
 PALMYRA MO

Like us on FB 
 Look us up on Auction Zip 

Kirksville Auto Auction

23099 Potter Trail Kirksville, Mo 63501

Annual Lawn and Garden Auction

Saturday April 23, 2022
Starting at 9:30am • Mowers will be starting at NOON

Riding Mowers:
 Big Dog Zero Turn with 350 Hours, Craftsman Rear Engine, Craftsman YTS 3000 with new blades and new belts, Yard Machine RM, JD 317, Ariens RM, JD 314, Craftsman Riding Mower, Troy Belt RM, Ex mark Zero Turn 18HP, Dixon Zero Turn, Simplicity Zero Turn, Cub Cadet Riding Mower, JD D130 With Snow Blade, Craftsman GT 4000Hydro, Craftsman Zero Turn, Toro 2 Master Zero Turn, Toro Hydro, Craftsman GT 3000, Cub 1015 Hydro, Toro Garden tractor, Craftsman 2000, JD L118 (nice), Husqvarna YTH 20F42, Husqvarna Riding mower, JDX485 27hp 54" cut, PLUS MANY MORE TO COME

Push Mowers & Tillers:
 Murray 22" cut, Lawn Boy, Yard Man 20", MTD 24" cut, MTD 22" cut, Craftsman, 5hp 24" cut, Electric Pusher, Craftsman 3.5HP 20" cut, MTD Self Propel, Bolens rear mounted PTO Tiller, Cre, MTD Tiller, Craftsman Front tire, Earthquake Front tire, , Craftsman snow blower

Many weed eaters, Hedge Trimmers, blower and Plus Too many to mention

8n Ford Tractor, 3pt rear blade, Category 3 quickhatch 3pt. Forklift, 50-gallon fuel transfer tank, 3 trailer loads of tools and miscellaneous items

HUGE VARIETY OF GARDEN PLANTS

CONSIGNMENTS ONLY
 WE WILL TAKE CONSIGNMENTS UNTIL THE SALE DAY
 For More information or Consignment Calls:
Todd Morton 660.216.8531 • Tony Morton 660.216.3373

THIS WILL BE A VERY HUGE SALE



A FAMILY OWNED BUSINESS SINCE 1979



Headquartered in Hamilton, Illinois, Sullivan Auctioneers, LLC is one of the largest Real Estate and Farm Machinery Auctioneers in the nation.
 For more than 40 years we have been conducting professional auctions. We connect our sellers with thousands of interested buyers around the world.

Considering an Auction?
 CALL OR EMAIL TODAY FOR A NO OBLIGATION CONSULTATION!
 Toll Free (844) 847-2161 | Sold@SullivanAuctioneers.com
www.SullivanAuctioneers.com | Lic. #444000107

Shelbina Real Estate & Personal Property Auction

The late Ronnie and Carol Sue Copenhaver

Saturday, April 30, 2022 at 10:00 a.m.

Directions: 416 South Shelby Street, Shelbina, Missouri. From US Highway 36 at Shelbina, follow North Center Street South for 0.7 miles, turn right on West Wood Street for 0.2 miles, then turn right on South Shelby Street to the auction location. Look for signs the day of the sale.

Real Estate: Located on a 0.46 acre corner lot, this 1,100 square foot home offers 3 bedroom, 2 bath ranch style home has had many updates. The home is a very clean, well maintained home in a well respected neighborhood. The kitchen has a pantry, there is a separate laundry room, a patio door walks out onto the concrete patio and a single car attached garage. The roof was replaced in 2019, the siding, windows and front door was replaced in 2018, the carpet is 3 years old and there are new toilets. The home has a newer a/c unit/heat pump, gutter guards and a 40 gallon Rheem electric hot water heater.

The real estate will sell promptly at noon. If you would like to schedule your personal showing, please call Scotty at 573-356-4405. *See Terms and Conditions for Purchase of Real Estate below.

DOWN PAYMENT: 10% of the contract purchase price will be due upon acceptance of the Sales Contract. Personal or Cashier's Checks will be accepted. This is "AS IS, WHERE IS" and is non-refundable. CLOSING: Closing shall be within 30 days of the auction date.

Vehicle: 2005 Ford Explorer XLT, V8, 4x4, Advance Trac, 61,361 miles, cloth interior, 3rd row seating

Household Items: Dyson vacuum sweeper; microfibre full size hide a bed; electric photo album; numerous baby blankets and quilts; children's books; heavy duty wooden bookshelf; 2 piece full size bedroom set; Eden Pure wall hugger radiant heater; 2 XXL Kent coats; Snap On XXL coat; Dickies XXL coat; Eddie Bauer XXL leather coat; Snap On blanket; Keller oak dining room table with 2 leaves and 6 chairs; Rainbow vacuum; Hoover vacuum; Kitchen aide mixer; crock-pots; Tupperware; pots and pans; Westbend bread maker; Rogers stainless flatware LOTS MORE.

Antiques and Collectibles: Bing Crosby Christmas, Statter Brothers, Ronnie Milsap, Conway Twitty, Mel Tillis and numerous others; military uniform and trench coat; glass enamel figurines; pin doll; single pedestal metal desk; large selection of cookbooks; antique 2 drawer dresser and glove box; wooden nail keg; numerous wood frames; 3 tie quilts; Boosey & Hawkes clarinet; old dolls; miscellaneous China ware; small marble collection; some enamelware; Kent Feed glass cookie jar; coffee grinder; handmade by Ronnie Copenhaver display shelf; handmade by Ronnie Copenhaver later bin; some pink depression glass; miscellaneous arrowheads and pieces; LOTS MORE

Outdoor Equipment and Tools: Milwaukee Sawzall; Bostitch Brad nailer; Poulan Pro 35cc chainsaw; Kobalt KHT 240 cordless hedge trimmer; Troybilt TB2MB gas leaf blower; EGO power cordless leaf blower; Stihl F538 curved shaft weed eater; Trucraft 107 belt driven table saw, new blade and belt; parts washer; Milwaukee 1/2" M18 impact; Ariens electric or pull start 24" width x 20" height snow blower; Craftsman shop stool; John Deere shop vac; 6? Warner fiberglass ladder; 5? aluminum ladder; foldable saw horses; numerous long handle tools; Dewalt radio; 6? bench grinder; several miscellaneous fishing poles and tackle boxes; Porta Cable 18V 3/8" impact driver; Dewalt sawzall and grinder; Sun Dolphin 4 seater paddle boat with canopy LOTS MORE

There will be many more items at this auction too numerous to mention.

GO TO WEBSITE FOR FULL LISTING & PHOTOS



573-356-4405

Michael Cunningham 660-651-2288 • Paxton Pittman 660-346-1956
WWW.SCOTTSAUCTIONSERVICE.COM