

**FREE**

NEW EDITION EVERY FRIDAY!  
VOL. 29 • NO. 69 • MAY 27, 2022

# NEMO *Trader*

**THE NEMO TRADER**

PO BOX 809 • KIRKSVILLE, MO 63501 • PHONE 660-665-8500

Web Site: [nemotrader.net](http://nemotrader.net) • Email: [sales@nemotrader.net](mailto:sales@nemotrader.net)

A WEEKLY ADVERTISER SERVING ALL OF NORTHEAST MISSOURI AND THE SURROUNDING AREA



HR296199

Like us on facebook

*Saturday May 28, 7:00pm*  
**LYNN COUNTY  
EXTREME  
BULL RIDING**

GATES OPEN AT 5:30PM  
@ LYNN COUNTY FAIRGROUNDS  
BROOKFIELD, MO

*Stick around to hear* **Cody VANDERAU Band**

**SPONSORED BY**

**CONCESSIONS & BEER GARDEN ON SITE**

ADDITIONAL SEATING AVAILABLE

TICKETS AVAILABLE AT  
QUINN LUMBER, AND  
BROOKFIELD VET CLINIC

**NOT RESPONSIBLE FOR ACCIDENTS**

EXTREME BULL RIDING TOUR AND BROOKFIELD VETERINARY CLINIC



**TRI STATE**  
ALL CREDIT BUILDINGS  
HUNNEWELL MO  
[www.youpaylessmoney.com](http://www.youpaylessmoney.com)  
573-731-3300

RENT TO OWN NO CREDIT CHECK  
BUILT IN 30 DAYS OR LESS  
LOW DOWN PAYMENTS & DEPOSITS  
INTEREST AS LOW AS 0%  
WE MATCH AND BEAT ANY COMPETITOR



**MEMORIAL DAY  
WEEKEND  
SALE**

## MEMORIAL WEEKEND SALES EVENT



ALL UNITS ARE UP TO 10% OFF - BRING A FRIEND THAT BUYS RECEIVE \$100 CASH - FREE GIFT WITH AD



BRING THIS AD IN AND RECEIVE A FREE GIFT \$\$\$\$\$\$ SAVE BIG \$\$\$\$\$\$\$\$ SHOP LOCAL WITH US AND SAVE!!!

### Shuckie's Auction & Appraisal Service

9471 CHICAGO KANSAS CITY EXPRESSWAY  
HUNNEWELL, MISSOURI 63443

NEED TO CLEAN OUT YOUR SHEDS?



BEFORE

AFTER



BEFORE

AFTER

CONTACT US TODAY FOR A NO HASSLE APPRAISAL



**COL. RAY DELAPORTE**  
(573)-406-3783



**BRO. BRYAN SHUCK**  
(573)-822-3170


### MEMORIAL WEEKEND FLEA MARKET

SATURDAY SUNDAY & MONDAY  
9:00 AM TO 6:00 PM DAILY  
LOCATED ON THE CHICAGO  
KANSAS CITY EXPRESSWAY  
(HWY 36) IN HUNNEWELL MISSOURI  
(FORMALLY C & M SERVICE)  
VENDORS WELCOME (FREE SETUP)

FOR MORE INFORMATION CALL  
573-731-3300 OR 660-229-2260



# WE GOT YOUR NEEDS COVERED!



**FARM TARPS**
**TRUCK TARPS**

**HOOP BUILDING COVERS**

# Troyer TARP MFG.

## 660-486-3301

20264 STATE HWY. VV • ETHEL, MO 63539

### Advanced Livestock Watering Systems

One of Geo-Star Waterer's most appreciated features is the ease of cleaning the tank and having exceptionally clean water for the animals.

**Visit us today for more information!**




**Geo-Star Waterers**

*A waterer designed to be the utmost in user friendliness and clean fresh water.*

Consists of a 5'-6" tall double-wall insulated tube that is placed in the ground. This allows a large area of natural ground temperature air to surround the drinking bucket - keeping the livestock water from freezing in cold temperatures. The waterer is made of thick polyethylene plastic. The insulated lid clamps down on the base tube with 2 simple stainless steel latched with safety rings.

**We are your dealer for GeoStar Energy Free Waterers**

**TIMBERVIEW SALES**

16853 Eagle Blvd., Drakesville, IA 641-722-3100

## LOCAL MATTERS

Please support the advertisers that power your community paper.

**NEWSPAPERS MATTER**

NOW MORE THAN EVER

## Animal Housing, Hay Storage & Much More!!







# Skylight Fabric Structures

**20749 State Highway VV  
Ethel, MO 63539**

**660-486-3250  
833-482-8862**

## FRONTLINE FENCING LLC


Steel Pipe Fencing.  
Custom Built Gates and Livestock.  
Handling Equipment.  
Barbed Wire and Woven Wire Fence.  
Arrowquip Cattle Handling Equipment.  
Post Driver Rental.



**29386 St. Hwy. T  
Greentop MO  
660-956-2430**

### Golden Grain Bins-Spring Discount

Grain Bins		Floors w/12" Supp. & Flashing	
18'x18'	4,195bu. \$ 7,398	18'.....	\$2,065 30'.....\$ 5,764
27'x21'	11,265bu. \$14,850	21'.....	\$2,824 36'.....\$ 8,211
42'x24'	32,245bu. \$34,617	27'.....	\$4,710 42'.....\$11,182



**GMLS Industries, Inc.**

PH: 660-699-2179 or 620-983-2136

[www.gmlsindustries.com](http://www.gmlsindustries.com)

## Edina Livestock Sales Edina, Missouri

### Friday, May 27th No Sale - Memorial Day Weekend

### Friday, June 3rd Breeding Cow and Bull Sale

To Consign For Any or All Sales or For Information Call:  
Owner - Kevin Strange • Cell: 660-341-9974  
Ryan Strange • Cell: 660-341-9721  
Sale Barn: 660-397-9999

**Field Reps:**  
Bill Tom Hall 660-342-5420 Mike Bronestine 660-341-9965  
Jason Bichsel 660-216-0373 John Powell 660-341-1717

## Buckman Machinery



**John Deere 7200, MFWD, 741 Loader & Bucket, LH Rev, power quad, 4500 hrs, new rear tires, \$72,500.**



**John Deere 4455, MFWD, dual reverser, 8718 hrs, new tires, fenders, with JD 740 Loader & joystick, \$59,500.**




**John Deere 5603 2008, MFWD & 542 Loader, reverser, dual hydr, joystick, 2035 hrs. \$52,500.**



**MF 235 Diesel, 3000 hrs, restored, new rubber, hydralve, sharp looking, \$7,250.**



**John Deere 640 R Loader, 2020, with 6000 series mounts, new 84" bucket, same as new, \$16,500.**



**John Deere 7200, 2WD, 5400 one owner hrs, power quad, Firestones, clean, \$6,850**

**573-881-3557**

### Livestock

Fish for stocking ponds. Catfish, Grass Carp, Crappie, Bluegill, Redear, Bass and minnows. Heindselman Family Farms. Call Greg 660-341-5692.

## YOU CAN LEARN A LOT from NEWSPAPERS

## JOIN OUR TEAM



### ADVERTISING AND MARKETING SALESPERSON

Are you a people person looking for a new career opportunity? The Kirksville Daily Express/Nemo Trader, with a long history of success in Northeast Missouri, is looking for its next full-time Advertising and Marketing Salesperson.

Our sales staff help current and prospective customers with their advertising and marketing needs. This is the chance for you to get creative and help bring a client's vision to life. Knowledge of the Kirksville area is a plus.

Our ideal candidate is self-motivated and independent. You need to be focused on developing new business as well as maintaining current customers. You also need to be organized and have computer skills. We expect enthusiastic, goal driven people. We offer excellent training and advancement opportunities, plenty of support and the latest in research and marketing tools.

Applicants must have a valid driver's license with a good driving record and a reliable, insured vehicle in order to travel within your territory. No overnight travel is required.

No previous sales experience required, although previous sales experience in any industry is a plus. Kirksville Daily Express/Nemo Trader is known for quality training and support. We offer a base salary, commissions and bonuses.

Our benefit package includes vacation and sick time, health, dental, vision and life insurance, 401K, expense reimbursement, reimbursed mileage and cellphone. Send cover letter and resume to:

**Kirksville Daily Express/Nemo Trader**  
Attn: Nicole Stevens/Human Resources  
130 South 5th Street | Quincy, IL 62301  
or email to: [nstevens@whig.com](mailto:nstevens@whig.com)




**READY TO SHIP  
NOW PRICED  
BELOW  
DEALER COST!**

**48' x 9 RING  
&  
48' x 12 RING**



**LIMITED QUANTITIES  
GOOD WHILE SUPPLY LASTS  
CALL TODAY**

**CAIRO (660) 263-6700  
VANDAILIA (573) 594-2167  
GRAINBINSUPPLY.COM**



**ANNOUNCEMENTS**

**Personals**

78 year old widow lady looking for older gentleman for friendship. Call Mary 641-856-2058.

**EMPLOYMENT**

**Work Wanted**

Wanted Yards to Mow. Call 660-216-7696

**HELP WANTED**

**COMMUNITY OPPORTUNITIES, INC.**

is seeking full time Recycle Truck driver 7:30 am to 3pm M-F. No weekends.

Wage negotiable.

Requires class E certification.

Good driving record required.

Will be working with hard working, dedicated individuals with disabilities.

**Please call: 660-665-5768**

**M-F, 8am to 3pm and/or email resume to: communityoppkv@outlook.com**

**Arts & Crafts**

**Save 25%\***

on ANY BERNINA Machine priced \$999 and up

with trade-in of any brand or model sewing machine.

**Green Acres  
Sew & Vac**

221 W Grand Ave.  
Memphis, MO

660-465-7131  
greenacressewvac.com

TRADE-IN EVENT | MAY 1-31



**Insurance & Savings**



**NEED GROUP HEALTH INSURANCE?**  
WE CARRY MULTIPLE COMPANYS FOR GROUP HEALTH, MEDICATIONS, DENTAL & VISION, AND WORKMENS COMP. GIVE US A CALL FOR A FREE QUOTE!  
WE DO THE SHOPPING FOR YOU!

**VESTAL INSURANCE AGENCY**  
710 N MARION ST., KIRKSVILLE, MO 63501  
660-665-0600  
vestalinsurance@att.net

**Services**

**Congratulations!**  
Class of 2022

Green City Milan Kirksville  
660-951-8430 • 660-951-8432 • 660-951-8431  
www.farmbank.com

**Clothing**

**LOCALLY OWNED & OPERATED!**



**SCREEN PRINTING  
EMBROIDERY  
SHIRTS + HATS  
TROPHIES, AWARDS & PLAQUES  
BANNERS  
AND MORE!**

**660.665.8001**   
KIRKSVILLESHIRTS.COM

**Lawn & Garden**

Vermer VR820 eight wheel HiCap hay rake, field ready, low acres, \$4000. 660-292-0165

**Lawn & Garden**

Used garden tillers, all sizes and makes. many Troy-Bilt and BCS. 660-216-1809.

**AGRI-BUSINESS**

**Land/Pasture**

7 1/2 Acres m/l for sale West edge of Unionville MO 660-216-0394

Conagra Brands in Macon is now hiring for all shifts, both full-time and part-time positions in Production, Sanitation and Maintenance.

**WEEKLY ATTENDANCE & EMPLOYEE REFERRAL BONUS**

Join the Conagra Brands team in Macon with competitive hourly starting pay of \$18.37 per hour, and an excellent benefit package that includes medical, dental, vision and life insurance.

Salary positions in Sanitation and Maintenance are also available.

Open interviews are conducted each Wednesday in the plant between 9 AM and 11 AM, and other times by appointment.

Apply online at [jobs.conagra.com/careers](http://jobs.conagra.com/careers) and follow the links to submit your application OR text Conagra to 25000.

**YOU CAN LEARN A LOT  
from NEWSPAPERS**

**Services**

**HORIZON CREDIT UNION**  
701 S. Baltimore • Kirksville  
310 N. Missouri St. • Macon

**660-385-8205**

Easy Application Process Online  
[www.YourHCU.com](http://www.YourHCU.com)

**NEED A CAR TO GET TO WORK?**

THERE'S HELP ON THE  
**HORIZON!!**

CAR LOANS FOR THOSE WITH  
\*POOR CREDIT \*NO CREDIT  
\*DIFFICULT CREDIT SITUATIONS  
\*REWARD BASED RATES FOR EXCELLENT CREDIT

Competitive Interest Rates  
Incentive for Credit Improvement



# WHITETAIL PROPERTIES REAL ESTATE

HUNTING | RANCH | FARM | TIMBER

## OVER

### 6,000 ACRES SOLD OR PENDING IN 2022 BY THE JEFF PROPST TEAM.

Sullivan, MO - 580 Ac.

Mercer, MO - 660 Ac.

Adair, MO - 112 Ac.

Schuyler, MO - 161 Ac.

Clark, MO - 198 Ac.

Mercer, MO - 399 Ac.

Linn, MO - 77 Ac.

Mercer, MO - 40 Ac.

Mercer, MO - 80 Ac.

Van Buren, IA - 425 Ac.

Knox, MO - 105.6 Ac.

Mercer, MO - 71 Ac.

Mercer, MO - 160 Ac.

Adair, MO - 172.1 Ac.

Mercer, MO - 609 Ac.

Putnam, MO - 515 Ac.

Mercer, MO - 151 Ac.

Mercer, MO - 78 Ac.

Sullivan, MO - 580 Ac.

Chariton, MO - 80 Ac.

Putnam, MO - 290 Ac.

Putnam, MO - 44 Ac.

Mercer, MO - 195 Ac.

Clark, MO - 82 Ac.

Sullivan, MO - 36.2 Ac.

Mercer, MO - 62 Ac.

Mercer, MO - 41.55 Ac.

Mercer, MO - 517 Ac.

**WHITETAILPROPERTIES.COM**

**MERCHANDISE**

**Wanted**

Male Red or Blue Heeler puppy, reasonable. Call 660-216-1544.

Wanted to Buy: Model 30 tiller for a 318 John Deere Tractor lawn mower and 210 John Deere Mower w/tiller. 641-652-7702 leave message

**Wood & Accessories**

Wevers Outside Wood Furnaces, have an assortment of parts, line, and etc. Call 660-423-5242, cell 660-216-9885. Open 6 p.m. - 9 p.m. Monday - Friday, Saturday anytime, call first.

**REAL ESTATE SALES**

**Mobile Homes For Sale**

AVAILABLE stock mobile homes immediately, double wide and single, 3 and 4 bedroom. 573-499-9993 columbiadiscounthomes.com

Stock mobile homes available: We gottem, single and doublewide 3 and 4 bedroom! Call Tuffy 573-657-2176 amegamobilehomes.com

True modulars 30 to 60 day delivery available, 3 and 4 bedroom. 573-657-7040 chateauhomes.net

**RECREATION**

**Accessories-Recreation**

Farm Tuff adjustable bale trailer for ATV, 2 inch ball, new never used. Needs assembled, half price, \$600.00. 660-216-1544.

**Campers & Trailers**

2013 36' Jayco Eagle Premier Fifth Wheel camper, 4 slides, double refrigerator, excellent condition, \$35,000 OBO. 573-629-9769

**Motorcycles**

1981 Honda 900 custom, 26,000 actual miles, excellent condition. Maintained to the highest standards, \$3200.00. 660-686-8707.

Homemade motorcycle trike. Kubota diesel engine, four speed transmission. For information call 660-342-1986.

**RECREATION**

**Motorcycles**

WANTED TO BUY: Harley Davidson's, any year, any condition, cash money. Days 660-263-1356 or 660-537-0068

**Wanted**

WANTED TO BUY: Harley Davidson's, any year, any condition, cash money. Days 660-263-1356 or 660-537-0068

**Air Conditioning/Heating**

**The Ultimate Wood Heat.**



**CLASSIC EDGE**  
TITANIUM HD SERIES  
Outdoor Wood Furnace

- **More Comfort** - Thermostatically controlled wood heat.
- **Peace of Mind** - Keep the fire outside and eliminate the dangers associated with indoor wood heating.
- **Save Money** - Wood is a renewable, inexpensive and often free energy source.

**CAMPEN**  
Heating & Air Conditioning  
573-288-8966  
Canton, MO  
CentralBoiler.com

**Chat/Dirt/Gravel**

**DIRT WORK** All types of excavation, reclaiming overgrown fields, including CRP and WRP. Building site preparation, creating new trails and crossings, Food plot development and maintenance. Leveling and grading, wetland construction and maintenance. Pond and lake cleaning and construction. Call for quotes. 660-342-2701

**LOCAL MATTERS**  
Please support the advertisers that power your community paper.

**NEWSPAPERS MATTER**  
NOW MORE THAN EVER

**Campers & Trailers**

**CALL US NOW**  
for the best prices...

28248 327th Ave.  
LaGrange, MO • Hwy 61 South,  
4 Miles South of LaGrange, MO

**573-655-2254**

<p>#012188</p> <p><b>\$24,495</b></p> <p>2022 Salem FSX 181RT TOY HAULER, Light Weight Easy to Tow</p>	<p>#7Y0164</p> <p><b>\$27,495</b></p> <p>2021 Jayco Jay Flight SLX 8 265RLS Large Slide-Out, Rear Entertainment</p>	<p>#109804</p> <p><b>\$22,995</b></p> <p>2022 Keystone Springdale 2010BH Double Over Double Bunks</p>
<p>#109692</p> <p><b>\$19,995</b></p> <p>2022 Keystone Springdale Single Axle 1800BH Light Weight Bunkhouse</p>	<p>#072974</p> <p><b>\$24,495</b></p> <p>2022 Salem FSX 178BHSK Bunkhouse, Slide-Out</p>	<p>#429686</p> <p><b>\$35,995</b></p> <p>2022 Salem Cruise Lite 24RLXL Slide-Out, Rear Entertainment</p>

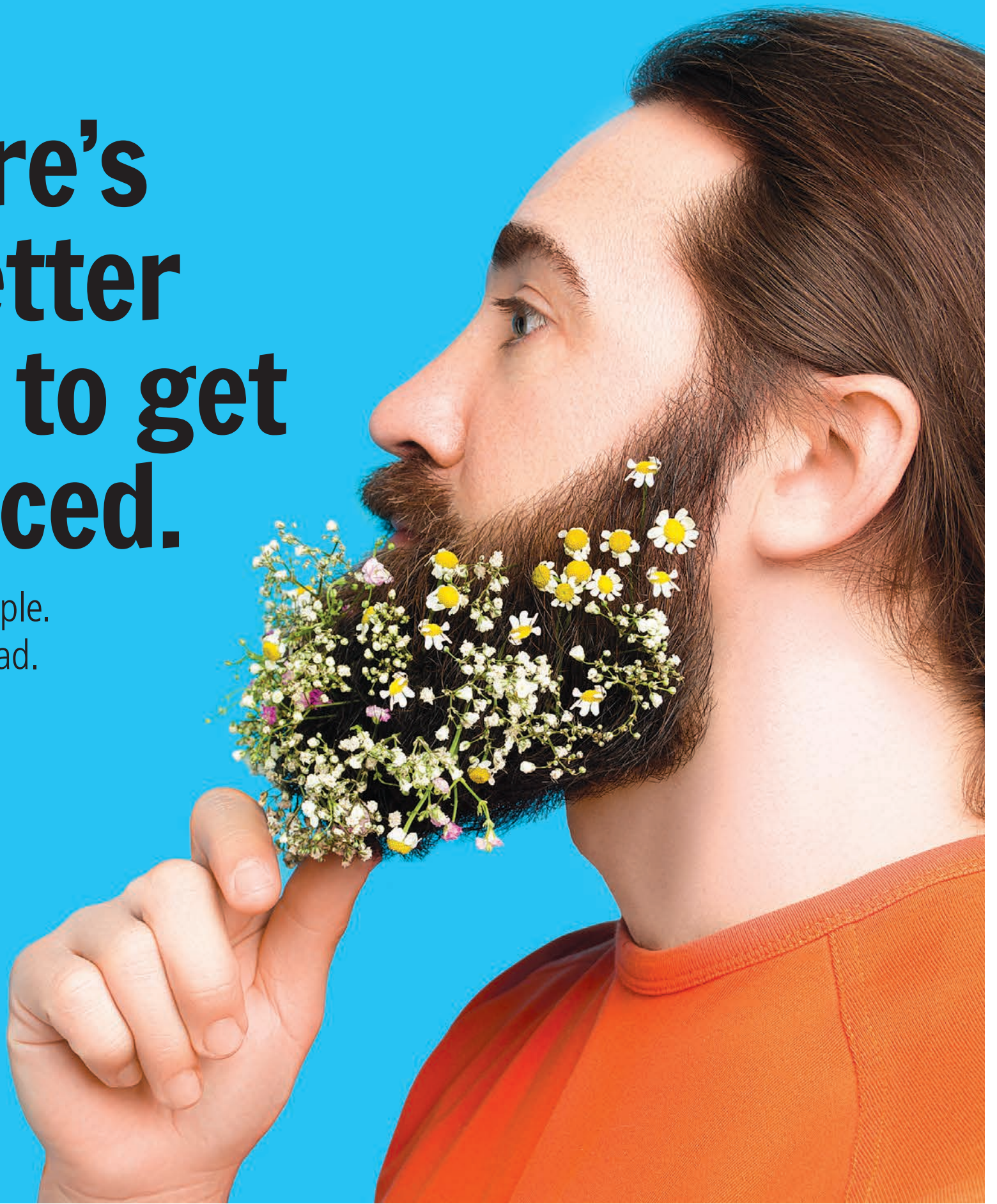
**Beilstein Camper Sales**

[www.beilsteincampersales.com](http://www.beilsteincampersales.com)

Since 1956, family owned Beilstein Camper Sales has provided exceptional value and service to our customers. We feature a wide selection of new RVs from Forest River, Heartland and Keystone. We're on the Avenue of the Saints along side Highway 61, four miles south of La Grange, Missouri. Stop by today to get a great deal!

# There's a better way to get noticed.

Keep life simple.  
Take out an ad.



## NO QUESTIONS = NO ANSWERS

No questions from journalists = less accountability in our democracy



Denying press access is a violation of your First Amendment Right to a Free Press.

Support Real News.  
Support a Free Press.

SUPPORT  
**REAL**  
NEWS

**Building Supplies**



**LAN-DOW BUILDINGS**  
 "We Build To Suit Your Needs"  
 "Custom Built"  
 Pole Barns • Garages • Utility Buildings  
 "H" Don or Dick Middleton  
**Memphis Lumber Co.**  
 1-800-337-5858 • 660-465-8595  
 Fax: 660-465-8596

**LANCASTER LUMBER INC.**  
 Lancaster, MO.  
 1-800-424-5071  
 LAN-DOW BUILDINGS  
 www.lancasterlumber.com

**Premium Metal Roofing**




641-664-3990 • ammetal.net

**Miscellaneous**  
 Registered Red and Black Angus Bulls for sale. Red sired by Enterprise, Let's Roll, Domain. Blacks sired by VDAR Lone Peak. Calving ease, growth, docility. Van Wye, Lancaster 309-212-4838  
 Two sets of Leather Harness, several collars, harness parts, lead ropes, and halters, \$1100.00; Fore Cart \$350.00. 660-342-5314

**Miscellaneous**  
 250 Red Star hens, brown egg layers, 1 year old, laying 80%. Fort Madison IA. Ask for CM 319-470-3498



**Auto Repair**



**MOOSE RUN REPAIR**  
 9 YEARS EXPERIENCE  
 NEW LOCATION GREENTOP, MO ON US HWY 63

Tractor • Skid Steer • Combine • Air Conditioning  
 Self-propelled Forage Harvester & General AG Repairs

*Specializing in John Deere*  
 Engine • Transmission • Hydraulics  
 Power Shift/IVT Diagnosis & Repair  
 Computer/Electronic System Diagnosis & Repair

**660-988-3843**  
 DELVIN "MOOSE" STEINER  
 GREENTOP, MO

**ATTENTION LAND OWNERS!**  
**BUYER OF STANDING TIMBER**  
**OWNER /OPERATOR OF SAWMILL - BUY/CUT LOGS**  
**CERTIFIED - BONDED - INSURED**



TRI STATE TIMBER L.L.C.  
 PH. 660-341-4921 or 660-465-2975  
 353 1/2 GRAND AVE. • MEMPHIS, MO 63555

**CUSTOM CHOPPING**



ALL TYPES OF FORAGES  
 PRESERVATIVE AVAILABLE  
 Devon Zimmerman 660.464.1324

**Show Me Plumbing Services**



- General Mini Excavation & Skid Steer Work
- Livestock Watering
- Waterlines & Sewer Systems
- Residential Services & General Plumbing
- Utility Trenching

Stan Schrock 660-988-1163  
 Greentop, MO 660-766-2636



*Don't like to clean?*  
**We'll do it for you!**

Call for more info on our Janitorial Services!

**COMMUNITY OPPORTUNITIES, INC**  
**Janitorial Services**  
 1001 S. Osteopathy | 660-665-5768

**United Way Community Partner**

**COMMUNITY OPPORTUNITIES, INC**  
**Janitorial Services**  
 1001 S. Osteopathy | 660-665-5768

**BUY • SELL • TRADE**



**NO GUNS LTD**  
 660.627.5039

**2301 S. Franklin St. • Kirksville, MO 63501**  
 Hours: Tuesday - Friday 9-6 • Saturday 9 - 4 • Sunday & Monday Closed

**Construction-Services**

**SPRAY FOAM INSTALLATION!** We install open and closed cell spray foam. Strengthen your building and block drafts! Over 1 Million bd. ft. applied. Contact Lester at 641-208-7071, Spray Tex LLC 16302 192nd Street Bloomfield IA 52537

**YARD SALES**  
**Garage Sale**

Giant Annual Right-to-Life Rummage Sale: NEW LOCATION: old Willard school gym, 701 N Centennial, Kirksville, Thursday, May 26, 12-7; Friday, May 27, 8-5; Saturday May 28, 8-1. Furniture, kitchen, household, dishes, YuGiOh tins cards, antiques, collectibles, telescope, linens, crafts, books, tools, DVD's, toys, new items, food, knickknacks, jewelry, electronics, holiday decorations, nice baby, kids, and adult clothes, small to plus sizes, shoes, purses, lots miscellaneous. Saturday, 11-1 ONLY--\$1 bag sale.

**CLASSIFIEDS**  
**WHERE BUYERS AND SELLERS MEET**

**Miscellaneous**

**TIMBERLINE PET RANCH**

**We are your pet's best friend and home away from home!**

Shedding getting out of control? Finding fur everywhere? Call and book a De-Shed Treatment!

- Full Service Grooming
- Boarding
- Daycare
- Training



**660.665.PAWS**  
 Conveniently located 1/4 of a mile off of Highway 63 at 24252 Highway 11 West



**BULLET STOP GUN SHOP**

38080 US HWY 136  
 HARTFORD MISSOURI  
 660-355-GUNS (4867)

*Memorial Day WEEKEND SALE* **FRIDAY & SATURDAY 27TH & 28TH**  
**10AM-5PM**

<p><b>Taurus 9mm</b>                  Conceal &amp; Carry</p>  <p>Was: \$369.00  <b>Sale \$249.00</b>                  With Ammo!</p>	<p><b>Ruger AR-15</b>                  223/5.56                  "The Finest AR-15 Made"</p>  <p>Was: \$895.00  <b>Sale \$725.00</b></p>	<p><b>Heritage 22</b>                  "Rough rider"                  Revolvers</p>  <p><b>Only \$129.00!</b></p>	<p><b>20 ga or 410 ga</b>                  SINGLESHOT                  SHOTGUNS  <b>New - \$109.00</b></p> <p><b>357 Mag Ammo</b>                  \$33.50/50                  New Ammo</p>
---	---	---	---

**\* TONS OF AMMO ON HAND! \* LOTS OF ANTIQUE GUNS JUST ARRIVED!  
 \* FAMILY OWNED & OPERATED 56 YEARS \* BRING YOUR TRADES!  
 \* SALE PRICES GOOD FOR TWO DAYS ONLY! HURRY!**

**Miscellaneous**

SCOTT HUSKEY'S HOME SERVICE R-10 Foundation Enclosure Systems for manufactured, modular, & site built homes. Saves on utilities and prevents freeze ups. General maintenance and repairs since 1972 573-696-3468 "GO DAWGS"

Hanging baskets \$22.00, Planters \$30.00, 4 pack Flowers \$2.00 each. 4" Rd \$3.00, 6" Rd \$4.00, Vegetable Plants \$1.50 each. Rhubarb Plants \$5.00. We have a variety of baskets, planters and bedding plants. Also fertilizer blends for your garden raised beds etc., Potting soil \$15 per 2.8 cubic bag. Contact Kauffman Produce 11538 Iceberg Ave, LaPlata MO 63549

Garden Seed - Onion plants and bulbs, seed potatoes, candy, honey, spices, kitchen wares, wooden handles, greeting cards, gloves. Train Track Candies & More 11538 Iceberg Ave, LaPlata 3rd lane to your left!

**Double YOUR IMPACT with Print & Online**



Blessed are they that mourn,  
for they shall be comforted.  
Take this time to remember, reflect and honor our beloved friends and family.



**Travis-Noe Funeral Home**

1008 Potter Avenue, Kirksville, Missouri

**660-665-1300**

Neil & Sherry Travis, Brian C. Noe, Paulie Schmitz & Brenton Travis

**NEMO Trader Classified COUPON**

**2 Classified Ads for \$5.00**

20 cents per word over 20 words

For an additional \$1.00 run in the Kirksville Daily Express one time.

For and additional \$2.00 run in the Saturday Kirksville Daily Express and Kirksville Crier one time each.

Must be Mailed in or brought in along with payment

*Picture Ads Not Included with Coupon!*

**Choose Classification**

- Agri-Business       Real Estate       Transportation
- Announcements      Rentals       Yard Sales
- Employment       Real Estate Sales       Auctions & Estate Sales
- Financial       Recreation
- Merchandise       Services

**Ad No. 1 Each Box Represents a Word (20 words or less)**


**Ad No. 2 Each Box Represents a Word (20 words or less)**


Name \_\_\_\_\_

Mailing Address \_\_\_\_\_

Phone Number \* \_\_\_\_\_  
this is required\*

**PO Box 809 Kirksville, MO 63501 • 660-665-8500**

**LOCAL MATTERS.**

Please support the proud advertisers that power your community paper.



**NEWSPAPERS MATTER**  
NOW MORE THAN EVER

**A Day For Remembering & Honoring**



**Park View Memorial Gardens  
Avenue of Flags**

- Free Veterans Space •  
With purchase of a second space and perpetual care.

Drive by and visit the Park View Memorial Gardens, and see the Avenue of Flags.  
*Information will be available to our office.*

**Park View Memorial Gardens**

Davis-Playle-Hudson-Rimer Funeral Home and Crematory  
2100E. Shepherd Avenue (Highway 6 East)  
Kirksville, MO 63501  
**(660) 665-2233**

**Memorial Day**



**Maple Hills Veteran Memorial**

**A time to remember**

**A time to honor**

**A time to cherish our loved ones.**

Drive by and visit the Maple Hills Cemetery and see the Avenue of Flags.

*Stop in the office for information*

- Free Veterans Space •  
With purchase of a second space and perpetual care.

**Maple Hills Cemetery & Mausoleum**

Kirksville, MO 63501  
**(660) 665-3745**



# VICTORY

## Metals & Recycling

Kirkville, MO 660-665-8000  
 victorymetalrecycling.com

For current scrap prices call or visit our [Facebook Page](#)

★ **Construction/ Debris Recycling**

Visit Kirkville's construction & debris recycling facility and save trips to the landfill! Take advantage of this service for solid waste removal by bringing your landfill items to Victory Metals C & D recycling facility located at 3602 N. Industrial Rd.

★ **Roll-Off Container Service**

10-20-30-40 Cubic Yard Dumpsters

3602 N. Industrial Rd.,  
 Kirkville, MO 63501  
 djanesvmr@gmail.com  
 www.victorymetalrecycling.com



## CELEBRATIONS!

### PARTY RENTAL

KIRKVILLE, MO

FOR RENT

- Tables & Chairs
- Tents • Bounce House
- Cotton Candy Machine
- & More!

660-626-5162 or 660-665-9380

## JAGUAR LUMBER

Attn: Land Owners

Buyer of Timber  
 \*All species also Select yard Trees/Logs over 40" diameter,  
 \*Trees are selectively cut to insure optimal Forest Regeneration.

Certified & Bonded | Lavon Gingerich 641-664-2080

**Do you need?**

Tree work, concrete work, or yard work.

(Free Estimates) 660-220-3077

## Signature

Overhead Doors and Remodeling, LLC

660-785-0248

www.signatureremodelingkv.com

Residential and Commercial Installation and Service

Lawn/Garden/Landscape      Lawn/Garden/Landscape

New 3 pt. tillers, heavy duty, gear driven, 7' to 12' starting at \$4,050. 660-874-4455.

Wanted Yards to Mow. Call 660-216-7696

## Dutch Garden Nursery

Your Full Service Garden Center

We will be closed this Thursday, May 26th in observance of Ascension Day.

### OPEN MEMORIAL DAY!

**BULK MULCH!**  
 Red • Brown • Black  
 Double Shredded

**Bulk Mushroom Compost - New Load**  
**Bulk Topsoil**  
**Bulk Rock - Several Varieties**  
**Delivery Available!**

Lots of shrubs & tree for your landscape!  
**Beautiful Annuals & Tropicals**

**Need someone to do your landscaping for you?**  
**Call: 660-342-7064**  
**for planting or hardscaping services.**

MEMPHIS LOCATION • 660-883-5650  
 (Beside Country View Store)

EDINA LOCATION • 660-397-4115 (Home Base)  
 www.dutchgardennursery.com • Open: Mon. - Sat. 8 - 6

**SPACE AVAILABLE**

ASK ABOUT OUR OUT-OF-THIS-WORLD PRINT ADVERTISING RATES THAT FIT ANY BUDGET!

Worry Less.

## St. Andrew's

RESOURCES FOR SENIORS SYSTEM




*St. Andrew's Apartments has all that is best about independent living senior communities*

- An active, dynamic lifestyle
- Friendly people 55 and better
- Energy-efficient one-and two-bedroom apartments
- Laundry facilities on each floor
- Emergency response system
- Water, sewer, trash included
- Pets welcome policy (under 25 lbs)
- Both limited-income and market-rate apartments

Become a part of the *St. Andrew's* community and we'll pay up to \$300 of your moving expenses or take up to \$300 off your first month's rent.

Call or stop in any time for more information.

500 S. Osteopathy / Kirkville, MO

Across from Northeast Regional Medical Center

www.kirkvilleseniorlivingapartments.com

Tel. 660-627-5400



Owned by: Kirkville Senior Living L.P.

Managed by: St. Andrew's Management Services




**HARRISON FISHERY**

POND & LAKE STOCKING

Call us today! 660.423.5482

*Your trusted source for quality Fish!*

Harrison Fishery, Inc. is a family owned and operated business.

We stock most species freshwater, game & baitfish.

Contact us for price & delivery

660-423-5482

Species Available	Bluegill	Walleye
Largemouth bass	Redear sunfish	Muskie
Hybrid bluegill	Black crappie	Catfish
Golden shiners	Fathead minnow	and More!

Time to gather up the little ones, get their fishing poles and go enjoy a day of fishing



www.harrisonfishery.com

Call us today to learn how to protect your ash trees from the Emerald Ash Borer!



**SAVE YOUR ASH**

(660) 332-4414  
tandttree.com

**TIMBER MANAGEMENT**

Purchasing Walnut, Oak, Maple & Other Species

WE PAY BEFORE WE CUT

BONDED & INSURED  
641-895-8209

Est. 1968

**For Sale** 2015 Chevy Silverado 1500  
Crew Cab WT, 4x4, 5.3L, well equipped with preferred equipment pkg, power windows, locks, mirrors, cloth seats, tow hooks, towing pkg., keyless entry, Brownstone Metallic 143,000 miles.  
\$19,500

2009 Chevy Silverado LT 1500  
Extended Cab, 4x4, 5.3L, power windows & Locks, towing pkg., keyless entry, Graystone metallic, 144,000 miles.  
\$13,000  
\*\*\* Both 1 owner with NO Rust \*\*\*

ACCELERATORS SINCE "1974"  
Kahoka, MO  
660-727-3455 or 217-257-1385 ANYTIME

**ELECTRICAL SERVICES**, Electrical Inspections, Circuit Breakers, Old house and New House Wiring, Outdoor and Indoor Lighting, Service Upgrades, Trouble Shooting.  
One Call Fix All. (Free Estimates) 660-220-3077

**TRANSPORTATION**  
Parts & Services

New/used parts vehicles, semi's, farm/construction equipment, motors/trans-n's, body parts paint matching yours. Warrantied/delivered. 800-807-9612.

**TRANSPORTATION**  
Trucks, 4x4's, SUV's

2015 Chevy Silverado 1500, crew cab WT, 4x4, 5.3L, well equipped, windows, locks, tow, keyless brownstone metallic, 143,000 mile 1 owner, \$19,500.00 Accelerators since "1974" Kahoka, MO 217-257-1385

**TRANSPORTATION**  
Trucks, 4x4's, SUV's

2003 1/2 ton GMC, 2 wheel drive, V6, 8' bed, 2 door, black, 144,000 miles, \$7,750. 660-945-3805

2010 1/2 ton Chevy, 2 wheel drive, V8, 4 door, red, 94,000 miles, \$12,500. 660-945-3805

This ad supports journalism. Facebook and Google do not.

**SMALL ADS WITH BIG RESULTS!**

**TRANSPORTATION**  
Automobiles

1981 Honda 900 custom, 26,000 actual miles, excellent condition. Maintained to the highest standards, \$3200.00. 660-686-8707.

**AUTO'S UNLIMITED** 660-665-8149 | 660-341-0965  
No Sunday Calls!  
17406 Bob Rd • Kirksville, MO

**FEATURED VEHICLES**

2007 Saturn Ion II with 92,000 miles great shape great MPG!

1986 Bronco 2 Eddie Bauer 64000 actual miles, Carfax available, 2.9 I V6

ALL VEHICLES HAVE GONE THROUGH A 60 PT INSPECTION! STATE INSPECTED! CALL FOR MORE INFO!

**2011 Ford F-250 XLT**  
6.7 diesel with 115000 miles & Besler bale bed  
**\$34,000**  
660-341-7970

Warranty • 319-696-2981 • Warranty • www.rsautosalesinc.com • Warranty • 319-696-2981 • Warranty • 319-696-2981

**R.S. AUTO INC.** Office (319) 696-2981  
www.rsautosalesinc.com 214 S. Center St Lockridge, IA 52635  
rsautoinc@yahoo.com

319-696-2981 Check Our website for our wide variety on 4x4 Trucks - Cars - Mini Vans - Handicap Vans - SUV Motorhomes & Much More!

<td> <td> </td></td>	<td> </td>	
<td> </td>		
<td> </td>		
<td> </td>		
<td> </td>		
<td> </td>		
<td> </td>		
<td> </td>		
<td> </td>		

Warranty • 319-696-2981 • Warranty • www.rsautosalesinc.com • Warranty • 319-696-2981 • Warranty • 319-696-2981

# RAMER TRUCK SALES

Gorin, Missouri  
Monday-Saturday 8am-6pm



**2018 GMC Sierra Denali**  
6.2L, 4X4, 86K miles, Clean Title  
**\$41,900**



**2013 Ford F250 Lariat**  
130K miles, crew cab, 6.2 gas  
**\$22,900**



**2013 Ram Laramie 2500**  
101K miles, 6.4 Hemi with Chisholm 010 bale Bed  
**\$39,900**

www.ramertrucksales.com | HOME: 660.282.1002 | CELL: 660.341.6140 | "NO SUNDAY CALLS!" **Deweze**

There's a better way to get attention.

Keep life simple. Take out an ad.



## LOCAL MATTERS.

Please support the proud advertisers that power your community paper.



NEWSPAPERS MATTER  
NOW MORE THAN EVER



## COMMUNITY FAN DRIVE

# \$1000

Off the Down on Select Vehicles



When you bring in any new box fan  
Fans will be donated to local charities.



car-mart.com

Keeping You on the Road

With approved credit. See dealer for details. This offer cannot be combined with any other promotional offer. Example: \$499 down, 110 weekly payments of \$1078 per \$1000 financed at 16.5% APR. Not all vehicles shown qualify for the promotion.

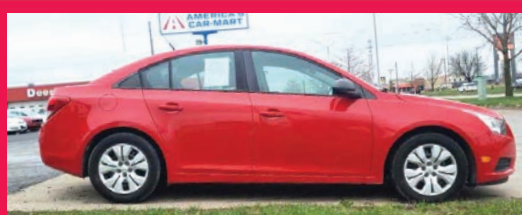
### We Offer:

- Peace of Mind Package
- Service Contract Plus
- Accident Protection Plan
- 100% Satisfaction
- Pay Your Way
- Low Down Payments
- Quality Used Vehicles
- Flexible Financing
- Hand Selected Vehicles
- Convenient Payment Options
- Start Your Approval Online
- Over 150 Locations
- 40 Years in Business
- We Buy Cars

660-956-4849 • 2015 North Baltimore • Kirksville



**2010 CHEVROLET MALIBU**  
FWD, 4 Cyl., Brown



**2014 CHEVROLET CRUZE**  
MANUAL, FWD, 4 CYL., RED



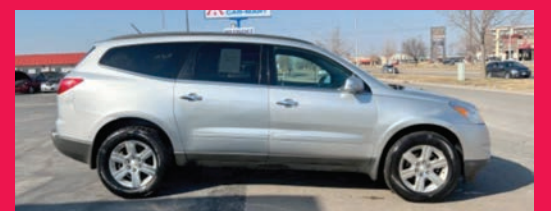
**2013 DODGE AVENGER**  
FWD, 4 Cyl., White



**2008 CADILLAC SRX**  
AWD, 6 Cyl., Silver



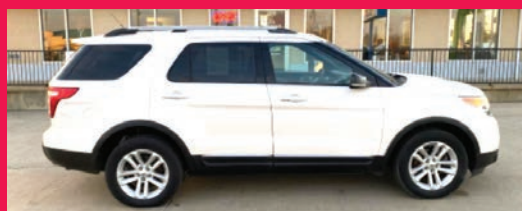
**2007 KIA SORENTO**  
RWD, 6 Cyl., Black



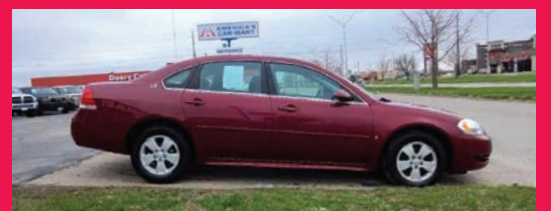
**2010 CHEVROLET TRAVERSE**  
AWD, 6 Cyl., Silver



**2010 BUICK ENCLAVE,**  
FWD, 6 Cyl., Silver



**2013 FORD EXPLORER**  
FWD, 4 Cyl., White, 160K miles



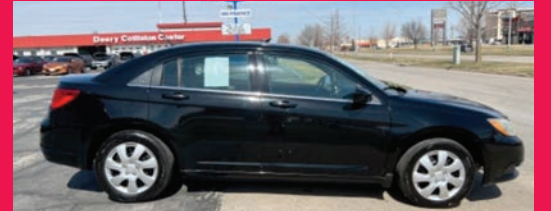
**2009 CHEVROLET IMPALA**  
FWD, 6 Cyl., Maroon



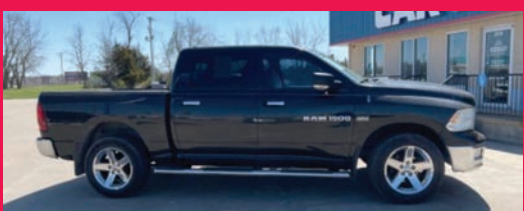
**2007 DODGE RAM 1500**  
RWD, 8 Cyl., Silver



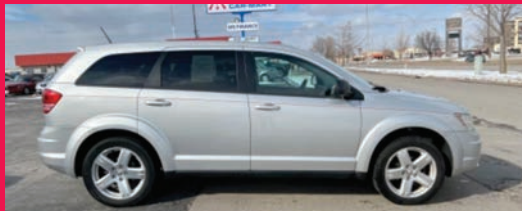
**2011 CHEVROLET SILVERADO 1500**  
4WD, 8 Cyl., Silver, 4 Doors



**2014 CHRYSLER 200**  
FWD, 4 Cyl., Black



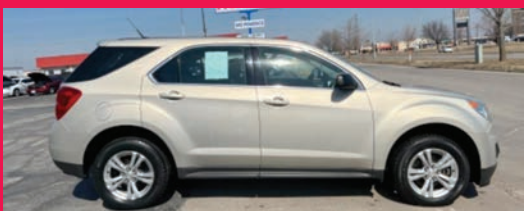
**2011 RAM 1500**  
4WD, 8 Cyl., Black



**2009 DODGE JOURNEY**  
AWD, 6 Cyl., Silver



**2008 TOYOTA RAV4**  
4WD, 6 Cyl., Blue



**2012 CHEVROLET EQUINOX**  
FWD, 4 Cyl., Gold



**2008 PONTIAC GRAND PRIX**  
FWD, 6 Cyl., Red



**2006 FORD ESCAPE**  
FWD, 4 CYL., WHITE



Keeping You on the Road



**KYLE JENNINGS**  
GENERAL MANAGER

# OPEN MEMORIAL DAY!!



3607 N. Baltimore St., Kirksville MO 63501 [www.kirksvillemotorcompany.com](http://www.kirksvillemotorcompany.com) 660-956-0212

**VIRTUAL ONLINE**

**Adair County, Missouri**

## LAND AUCTION

**Friday, June 24, 2022 at 10:00 AM**

OPEN HOUSE: SAT., JUNE 18 • 12 PM - 2 PM | 29274 US Hwy 63 | LaPlata, MO

**229 ACRES± (subject to survey)**  
SELLING IN 6 TRACTS

The farm is located approximately 2 miles north of LaPlata, MO or approximately 10.8 miles south of Kirksville, MO in Sections 29 & 31, T61N•R14W, Wilson Township, Adair County, MO.

Farm represents productive tillable cropland, CRP income, nice country home site with several sheds & grain bins, as well as an excellent development opportunity within minutes of Kirksville, MO.

**The West Farm**  
James Timothy West | Molly Oletha Jean West | Brenda Jean West

**Representing Attorney:** David Rouner | Rouner Law Office LLC  
400 N. Franklin Street | Kirksville, MO 63501 | (660) 665-7515

**Closing & Title Work:** Pickell Abstract Company  
115 S. Franklin | Kirksville, MO 63501 | (660) 665-8324

**Auction Managers:**  
Bill Fretwell (660) 341-7735 & Jennifer Wood (217) 257-8812

**SULLIVAN AUCTIONEERS, LLC** (844) 847-2161  
Sold@SullivanAuctioneers.com License #444000107

**Auction Sales**

Flower Basket & Plant Auction June 3rd starting at 4:00 pm. Kauffman Produce 11538 Iceberg Ave, LaPlata MO 63549

**CLASSIFIEDS**

WHERE BUYERS AND SELLERS MEET

**Hunnewell Real Estate & Personal Property Auction**

**Saturday, June 18, 2022 at 10:00 a.m.**  
Samuel & Charlot Murray

**Directions:** 201 N 3rd Street, Hunnewell, Missouri. From US Highway 36 at Hunnewell, turn South on CM Street, turn right on East Birch St (Old Business Highway 36) for 0.2 miles, then turn right on North 3rd Street. The property will be on your right. Look for signs the day of the sale.

**Real Estate:** Three bedroom, 2 bath home on 1.8 acres (3 lots) with additions in 1993 and 1999, large open kitchen and formal dining room. Includes central air, propane heat. 402' x 447' garage with 4 overhead doors, concrete and electric.

**The real estate will sell promptly at noon.** If you would like to schedule your personal showing, please call Scotty at 573-356-4405.

**\*See Terms and Conditions for Purchase of Real Estate below.**

**DOWN PAYMENT:** 10% of the contract purchase price will be due upon acceptance of the Sales Contract. Personal or Cashier's Checks will be accepted. This is "AS IS, WHERE IS" and is non-refundable.

**CLOSING:** Closing shall be within 30 days of the auction date.

**Vehicle:** 2004 F150 XL Triton 4.6 motor, 87 bed with 98,000 miles.

**Household Items:** Household Items: LaZBoy recliner; Best lift chair; electric fireplace; wingback Queen Ann style reclining sitting chairs; Justice flower pattern couch; glass top end table; miscellaneous prints and picture; Telekin 22" touch screen computer; HP printer; double pedestal computer desk; 4 drawer chest of drawers; maple style dresser with mirror; oak curved front curio cabinet; Insignia flat screen TV; robot Roomba; Kenmore upright freezer; Maytag washer; Whirlpool electric dryer;

**Antiques and Collectibles:** Crystal stemware; dessert plates; cake stand; frosted glassware; salesman sample cast iron woodstove; oak curved front lighted curio cabinet; large railroad/ship lamp; purple and red carnival dishes; Community flatware set; Janel tarnish proof flatware; miscellaneous China sets; maple drop leaf butler's cart; antique walnut rocking chair; ceramic stage coach with team of horses; ceramic horse bust; ceramic pulling horse collection; copper colored wagon and horse team clock; oak style wash stand for bowl and pitcher; antique drop leaf table with 4 chairs; "Welcome Home" cowboy bronze; lots more on website

**Outdoor Equipment and Tools:** John Deere 170 rider with snow blade; Kubota 2122 R 427 deck zero turn mower, 228 hours; Stihl MS 170 like new chainsaw; Central Machinery belt sander; Poulan Pro gas powered tree trimmer; Craftsman wood lathe; Cummings metal cutoff saw; miscellaneous electrical tools; Wheel wright tools; Delta 107 table saw; Rigid band saw; Guardian power floor model drill press; more on website

**Farm Equipment and Tractors:** Allis Chalmers WD narrow front end, runs and drives good; Allis Chalmers WD wide front end with pipe loader, push blade and bucket; heavy duty pulling harness set; nylon liner harness set; single pony pulling harness; spreaders; miscellaneous harnesses, hames, eveners; tractor seats; meatal evenner; various steel T posts; high wheel running gear; 4 wheel transport wagon; 2 wheel trailer, homemade, no title; 500 gallon propane tank; 57' 3 point brush hog

**GO TO WEBSITE FOR FULL LISTING & PHOTOS**

**SCOTTY'S AUCTION SERVICE** 573-356-4405

Michael Cunningham 660-651-2288 • Paxton Pittman 660-346-1956  
[WWW.SCOTTSAUCTIONSERVICE.COM](http://WWW.SCOTTSAUCTIONSERVICE.COM)

**Kirksville Real Estate and Personal Property Auction**  
The late Cristel Mankopf

**Saturday, June 11, 2022 at 10:00 a.m.**

**Directions:** 4 Kellwood Drive, Kirksville, Missouri. From US Highway 63 at Kirksville, turn West on East Illinois Street for 0.9 miles then turn North on Baltimore Street for 0.2 miles then right on Kellwood Drive to the auction location. Look for signs the day of the sale.

**Real Estate:** This brick, 3 bedroom, 1 1/2 bath home is nicely situated on a large corner lot that would be perfect for your family. The home has a large family/game room with vaulted ceiling, custom wet bar, a fireplace and sliding glass doors that lead out to the large patio. The formal dining room, galley style kitchen, utility room, 3 bedrooms and 1 1/2 bathrooms are all included on one level. The 2 car garage has a storage room and small basement located off of it. The property also includes an in-ground pool with concrete patio and a fenced in backyard with well-kept, mature trees.

**The real estate will sell promptly at noon.** If you would like to schedule your personal showing, please call Scotty at 573-356-4405. \*See Terms and Conditions for Purchase of Real Estate below.

**DOWN PAYMENT:** 10% of the contract purchase price will be due upon acceptance of the Sales Contract. Personal or Cashier's Checks will be accepted. This is "AS IS, WHERE IS" and is non-refundable. CLOSING: Closing shall be within 30 days of the auction date.

**Household Items:** Floral pattern high back chair; wooden end table; floral pattern hide-a-bed couch; over stuffed rocker/recliner; oval wooden tables; floral print white upholstered couch; large oak 3 glass door hutch; rectangular curio cabinet; maple style 2 door hutch; curved glass curio cabinet; dining room table with 3 cane back chairs and leaf; roll top desk; metal cushion top bench; king size 4 post bed; Sanyo flat screen TV; 4 drawer dresser; Element TV; various end tables; large jewelry cabinet; queen size bed; 4 piece bedroom set, 6 drawer, 2 mirror dresser, 2 bedside tables, armoire; sewing table; various lamps; various home decor items; several large area rugs, 8'x11', 9' x 13'; 4 drawer jewelry armoire; approximately 97' x 57' pool table; various Singer sewing machine bases; metal round table with 4 chairs; metal lounge; several smaller area rugs; Whirlpool high efficiency stackable washer and dryer; metal hall tree; various vacuums and rug cleaners

**Antiques and Collectibles:** Claw foot, quarter sawn round table; marble top buffet table; leaded glass table lamp; marble insert coffee table; antique roll top secretary hutch; wrought iron, marble top bench; lots of costume jewelry; wooden jewelry box/music box; Trend grandfather clock; large ceramic figurine collection; lots of glassware and cut class; marble top vase table; antique 3 drawer marble top dresser with mirror; large antique hall tree; various paintings and prints; large collection of cobalt blue glassware; hand painted GBC vase; 4 drawer tiger maple wood style dresser with mirror; various marble table tops; pair ceramic horses; several leaded glass lamp shades; baker's rack style potting table; numerous cement outdoor statues and pots

**Outdoor Equipment and Tools:** Varriflame electric outdoor grills; large outdoor canopy; various long handle tools; Stihl weed eater; Poulan weed eater; Stihl hedge trimmer.

**There will be many more items at this auction too numerous to mention.**

**GO TO WEBSITE FOR FULL LISTING & PHOTOS**

**SCOTTY'S AUCTION SERVICE** 573-356-4405

Michael Cunningham 660-651-2288 • Paxton Pittman 660-346-1956  
[WWW.SCOTTSAUCTIONSERVICE.COM](http://WWW.SCOTTSAUCTIONSERVICE.COM)

**Macon Real Estate & Personal Property Auction;**  
Corky and Sue Howard

**Saturday, June 4, 2022 at 10:00 a.m.**

**Directions:** 1603 Regency Court, Macon, Missouri. From US Highway 63, follow Briggs Street East for 0.5 miles then turn right on Regency Road to the auction location. Look for signs the day of the sale.

**Real Estate:** Conveniently located to schools and shopping, this well-maintained 3 bedroom, 2 1/2 bath home on a large, double lot offers plenty of room for your family and entertaining. The home features newer oak hardwood floors, a wood burning fireplace, a formal dining room, large kitchen with breakfast nook, 3 season room, utility room and 2 car attached garage. The full finished basement includes a full bathroom and many storage areas. The home has central air/heat, a gas furnace with humidifier and electric hot water heater. You must see this beautiful home to appreciate it!

**The real estate will sell promptly at noon.** If you would like to schedule your personal showing, please call Scotty at 573-356-4405. \*See Terms and Conditions for Purchase of Real Estate below.

**DOWN PAYMENT:** 10% of the contract purchase price will be due upon acceptance of the Sales Contract. Personal or Cashier's Checks will be accepted. This is "AS IS, WHERE IS" and is non-refundable.

**CLOSING:** Closing shall be within 30 days of the auction date.

**Household Items:** Love seat; upholstered chair; leather recliner; glass front lighted China cabinet; LG flat screen TV; lots of home decor; drop front secretary; brushed white queen size 2 piece bedrooms set; queen size maple bed; maple chest of drawers and matching maple side table; Dell touch screen computer; walnut desk with single drawer; kitchen cupboard base; small sofa; Durafume heater; Kenmore washer and dryer; glass top display coffee table with 2 drawers; Southwestern style love seat and couch; paisley rocker/recliner; oak swivel rocker; holiday decor; glass bakeware; numerous pots and pans; Kitchen Aid mixer; large (approx. 10 1/2" x 8") area rug.

**Antiques and Collectibles:** Antique wood carpenter plane; J. Bolin wagon draw knife; oakleaf gauge; folding antique rulers; J. Bolin gutter plane; antique chisels and meat cleaver; antique depth gauge; barrel spout; adjustable antique bevels; lots of cut glass; several Hummel figurines; perfume bottle collection; marble top display cabinet; antique wooden carpenter box with all trays; various kerosene lamps; Elgin men's pocket watch; Rockford pocket watch; Fostoria glassware; antique mirror with beveled glass; antique needlepoint chair; Lincoln desk; 2 drawer table; drop side table; maple queen size bed; antique hope chest; lots of table linens and vintage clothing; antique pictures, prints and oil on canvas; sitting chair with ottoman;

**Outdoor Equipment and Tools:** expanded metal patio chairs and lounge;

**Sporting Goods:** Remington 20 gauge 2 3/4" barrel; wall hanger Belgium double barrel shotgun;

**There will be many more items at this auction too numerous to mention.**

**GO TO WEBSITE FOR FULL LISTING & PHOTOS**

**SCOTTY'S AUCTION SERVICE** 573-356-4405

Michael Cunningham 660-651-2288 • Paxton Pittman 660-346-1956  
[WWW.SCOTTSAUCTIONSERVICE.COM](http://WWW.SCOTTSAUCTIONSERVICE.COM)

**2nd Annual Classic, Sporting Vehicle & Petroliana Auction**

**Saturday, July 9, 2022 at 10:00 a.m.**

**MULTIPLE CONSIGNORS**

**Directions:** 28251 US Highway 63 North, Macon, Missouri. From US Highway 36 travel approximately 2 miles North of Macon to Scotty's Auction Barn and Event Center on the West side of the road. Watch for signs the day of the sale.

We will be selling at auction classic automobiles, sporting vehicles and collectible petroliana items. This will be a large auction so consign early for the most advertising.

**Now accepting consignments from everywhere!**

**GO TO WEBSITE FOR FULL LISTING & PHOTOS**

**SCOTTY'S AUCTION SERVICE** 573-356-4405

Michael Cunningham 660-651-2288 • Paxton Pittman 660-346-1956  
[WWW.SCOTTSAUCTIONSERVICE.COM](http://WWW.SCOTTSAUCTIONSERVICE.COM)

**NO-RESERVE FARM ESTATE AUCTION**

**SATURDAY, JUNE 11 • 10:00 AM**

**AUCTION HELD ONSITE: 11654 Bale Dr., Browning, MO**

**DIRECTIONS:** The Mundell farm is located approximately 9-miles west of Browning, MO or 15-miles north of Meadville, MO. From Browning, MO take black top Hwy MM west for 8 miles to Bale Dr., then head south on Bale Dr. for 1 mile to sale location. From Meadville, MO travel north on blacktop Hwy 139 for 15 miles (follow detour signs due to bridge work if traveling north of Meadville) to black top Hwy MM, head east on Hwy MM for .5 miles, then south 1 mile on Bale Dr. to sale location. Auction signs posted sale day.

**EQUIPMENT HIGHLIGHTS:**


2008 John Deere 7130 Premium MFWD tractor, 16 spd. PowerQuad trans., 5,045 hours, sells complete w/ John Deere 741 loader, joystick control w/ powershift, 8' material bucket attachment; 1967 John Deere 4020 2wd tractor, diesel, shows 535 hours; 2014 John Deere 569 round baler, net wrap, twine tie, 5'x6', MegaWide Plus, Cover Edge wrap, gauge wheels, 1000 PTO, monitor, push bar ejector, 21.5-16.1SL flotation tires, 4,746 bales; 2018 John Deere MoCo 946 mower conditioner, center pivot, 2-pt. hitch, 1000 PTO, impeller conditioners, 13' rotary cut; Enorossi Easy 12-wheel hay rake, hyd. fold, high capacity; AGCO 4217 4 basket hay tedder; Woodworth 42' Hay Boss 8 tandem axle inline hay trailer, 8 bale, hydraulic dump; 2008 24' Wilson Ranch Hand model PSGN-5724T gooseneck aluminum livestock trailer, tandem axle, single divide gate, 8000 lb. axes; 2017 20' BigTex model 14ET-20 equipment trailer, bumper hitch; 2012 Ford F350XLT Super Duty 4wd pickup, 6.7L diesel eng., auto trans, regular cab, sells complete w/ HydraBed HB200 hyd. hay bed, gooseneck hitch, 147,772 miles; 2011 Gehl CTL 75 compact track loader, aux. hyd., cab, 2 speed, hand controls, quick attach, sells w/ 84" tooth material bucket, 2,469 hours; Bush Hog 12820 20' batwing mower, (8) airplane tires, front and rear chains, 1000 PTO; Redline "Bradco" 30' pasture drag harrow, hydraulic lift, manual fold; New Holland 514 manure spreader; Danuser EP15 hyd. post hole digger, w/ 12" and 18" auger bit, quick attach hookups - like new; plus much more!

**VISIT US ONLINE FOR COMPLETE LISTING & PHOTOS:**


[www.TeterAuction.com](http://www.TeterAuction.com)

**TONY MUNDELL ESTATE**

**TETER AUCTION COMPANY, LLC** FOR ADDITIONAL INFORMATION CONTACT: AUCTION MANAGER  
Joshua Teter, (680) 963-2461  
[www.teterauction.com](http://www.teterauction.com)



**Judd Motors** Call 660-457-3700  
Hwy 63 North, Lancaster, MO

<p><b>2017 Colorado</b> crew cab, Z71, V6, 4x4, heated seats, NAV, new tires, 1 owner, only 76k miles, red, only \$27,500</p>	<p><b>2011 Chevy 1500,</b> LT, ext cab, 4wd, 5.3L, 103k, Stealth Gray, only \$15,900</p>	<p><b>John Deere,</b> 12' Plow Disk only \$2,500</p>
<p><b>Happy Memorial Day!!</b></p>		
<p><b>2016 Chevy</b> 1500, LTZ, 5.3 L, 4x4, Crew Cab, Leather, Sunroof, 112K, Pearl White, \$27,900</p>	<p><b>2006 Chevy 1500,</b> ext cab, 4wd, V8, 132k, Sliver Birch, Very nice only \$12,900</p>	

[www.juddmotors.com](http://www.juddmotors.com) | In Business Over 75 Years  
Curly and Kevin Judd



**Summer Machinery & Livestock Equipment  
Consignment Auction**

Location: Downing, Missouri, take Hwy 136 West 1 mile to auction site.

**Friday, June 24, 2022**  
**@ 9:00 a.m.**

No additional hay racks items.  
Advertising deadline June 1.

**CONSIGN NOW!**

to consign items contact 660.342.8634

# SAYRE AUCTION, LLC

**ON SITE LIVE ESTATE AUCTION**  
**Saturday, June 11, 2022 at 10:00am**  
**722 N. Monroe, Brookfield, MO 64628**  
Watch for sale signs.

**REAL ESTATE**- 722 N. Monroe street. Part OL 79 original town Brookfield outlots begin 90' E. of NW corner OL 79, thence S 177'; W 90; N 55'; NE 125'; E 48'; to P.O.B. 0.28 acres. Nice 3 bedroom, 1 full bath upstairs, 2 bedrooms, 1 full bath downstairs, along with laundry room. Bonus room upstairs, nice small kitchen built in cabinets, attached garage. Carrier HVAC unit. Home sets on a nice large corner lot. A must see home.

**REAL ESTATE**- 415 E. Park Street. 6-57-19 part lots 5&6 Crandall's Addition Beg SW corner lot 6 Thence N 172'; E 95'; W 70' to P.O.B. 0.30 acres. 30'x 90' Nice block building

**REAL ESTATE**- 332 Hyatt 7-57-19 East 47' lot 6 all lots 7&8 Barbellings Sub 0.47 acres. 616 S Brunswick. 7-57-19 part 9&10 Barbellings Sub 0.13 acres. To view properties contact Shawn. 10% down day of sale with signed contract balance at closing, at Professional Land and Title.



**APPALIANCES-FURNITURE-HOUSEHOLD-**  
Kenmore elec. Stove; Kenmore side x side refrigerator; Hamilton beach microwave; Kenmore 15.1 cu ft. GE apartment size refrigerator; refrigerator; Kenmore elec. Washer and Dryer; Amana chest type deep freeze; Frigidaire Dehumidifier; glider rocker; 3pc bedroom set; Overstuff rocker recliner; book shelf; Kitchen table w/5chairs; Samsung 52" flat screen TV; Brinkman elec. Smoker; fruit jars; #4 crock; wooden computer desk w/ chair; HP printer; Linn co History book; 150th Anniversary history book of Brookfield; metal desk; metal file cabinet; Kodak carousel projector; plastic totes; wooden shelving; dishes; crock pot; black and decker toaster; glass bowls; Pyrex bowls; Kitchen aid mixer; realistic stereo; elec. Ice cream mixer;

**Owner**  
**Children of the late**  
**Eldon Turner**



**TRACTOR-WOOD WORKING TOOLS-SHOP TOOLS-**  
Allis Chalmers WD 45 narrow frt. Tractor; Troy built 8hp. Rear tine tiller; Delta DC-380 15" Planer (new); Delta shop master schroll saw; Delta DJ-15 6" Jointer; Delta 4"-6" disc sander; Steel City Oscillating spindle sander 55200 (new); AMT 4" Jointer; Craftsman 10" Radial saw; Classic air compressor 5hp. Two stage 60 gal. 230 volt (new); Irwin quick grip clamps; bar clamps; C-Clamps; Craftsman Lathe 12" swing 36" between center; lathe knives; Central Machinery 16 sp. Heavy duty drill press; 4" drill press vise; Troy built blower elec.; Craftsman 16gal. wet dry vac; Murry push mower; Craftsman wrenches; Craftsman flat ratchet box wrenches SAE; socket set; 4' level; 5gal. wet dry shop vac; HDC 1tn. Chain hoist; saw horses; Halogen shop lights; Troy built self propelled push mower; Weedeater straight shaft weed eater; 2-squirrel cage fans; router-jig saw table; bulldog jack; wood bits; power craft tool box; 2-New fowler calipers; Starrett T speed square; Rabbeting new set 1/2" router bits; router bits; Rocker wood clamps; Bessly k-body clamps; channel lock pliers; MIT 6 1/2" woodworking vise new; King jig K3 pocket hole system new; porter cable router; Ryobi precision Joint maker; Dado table saw blade set; Freud 8" super Dado w/ antikickback design new; wagner power strip- per; craftsman hand plain; No5 hand plain; Craftsman drill guide; Bench dog feather loc puch loc; squares; HDC Homier 10pc. T-handle hex key set; EZ smart 54" guide rail; EZ smart universal edge guide with saw base; new guide for table saw; stanley hand saw; Kobalt 14" fine cut back saw; coping saw; Orschlen elec. Bench grinder and buffer; 800 lb muscle back shelf; Craftsman 1 1/4 elec. Belt sander; Craftsman 3 5/8 power planer 3/4 hp; ACU wood chisels; Chicago elec. 14"cut off saw; Ash vacuum; Bench vise; torch set; sears 1/2" elec drill; craftsman 3/8 elec drill; Poulan chain saw; Pipe wrench's; gear puller's; Yard machine push mower; HDC mower Lift new; car ramps; 38" lawn sweep; wagner 28' extension ladder; metal wash tubs and stand; 6-2x10 boards; Allis Chalmers 611 LT 3sp. Riding lawn mower; several stacks of Lumber.



**Note:** Folks this will be a sale at couple different locations so please bare with us. Much more items sale day. First location will be at 722 Monroe street. Second location will be at 616 S. Brunswick street. We will sell the properties at NOON. Statements sale day supersede printed material. Lunch by Ma's sugar shack.

## SAYRE AUCTION, LLC

"If It's For Sale We Can Sell It" • Family Owned & Operated Since 1978!

[www.sayreauction.com](http://www.sayreauction.com)

Shawn Sayre 660-734-8782

Jordan Sayre 660-413-3230

Bill Sayre 660-734-0827



**JOHNSTON**  
**AUCTION**  
**& REAL ESTATE**  
 James L. Johnston  
 AUCTIONEER  
 573-473-4904 • 660-291-5921

**Dyke Estate**  
**AUCTION**  
 Sat., May 28<sup>th</sup> @ 10 a.m.  
 Location:  
 14145 Hwy 24, Madison, MO

Don't Miss The Opportunity To Buy This Desirable Property!!

**REAL ESTATE (SELLS @ 12 NOON)**



**OPEN HOUSE**  
 Wednesday, May 18 & 25  
 from 4 to 6 pm  
 or by appointment.  
 James L. Johnston, Broker & Auctioneer,  
 573-473-4904

[www.jamesjohnstonauction.com](http://www.jamesjohnstonauction.com)

**17+ ACRES**, Home has 4 bedrooms, 2 baths, 1969 sq. ft.; 2 car garage 24 x 30 with concrete floor; 2000 sq ft shop with concrete floor & roll up door; 12 x 14 storage shed; great shaded yard.

**Terms:** Buyer will pay \$5,000 in escrow day of auction, remainder due in 30 days; Buyer or Buyer's Agent(s) must make all inspections prior to auction day, the property sells as is with no contingencies (such as financing or improvements).

**MACHINERY & LAWN MOWERS:**  
 JD 3020 Tractor (gas) w/JD 48 Loader, 5600 hrs, sharp; Cub Cadet ZTR 50" Lawn Mower, nice; JD 636 ZTR commercial mower, needs repair; 8 Ft. Hydr. Angle Blade;

**TOOLS:**  
 Large selection of shop tools including: 7½ HP Air Compressor & Tank; Heavy Duty Electric Pressure Washer; Hot Water Pressure Washer; Parts Cleaner; Elect Gas Pump & Tank; Table Saw; Bench Grinder; Lincoln 200 AMP Welder; Lincoln Idealarc 300 AMP Welder; Steel Work Benches w/Vice; 30 T Hydr Press; Enco Drill Press; Roll-around A Frame w/elect winch; Shelving; Bolt Bins; Bolts; Lg Roll-around Tool Box; Wrenches; Socket sets; Electric & Hand Tools all types; Chain Saw; Extension Ladders; And much more;

**HOUSEHOLD:**  
 Nice Pool Table; Lg Oak Desk; Gun Cabinet; Metal Cabinets & Shelves; Large Antique Wardrobe; Cedar Chest; Smoking table; 7 Ft. Grandfather clock; Nice Dining Table & 6 Chairs; Bedroom Furniture; School Desk & Chair; White 3-door Cabinet; Library Table; Chest Freezer; Washer & Dryer; Singer Sewing Machine; Many household items too numerous to mention

**JOHNSTON AUCTION & REAL ESTATE** cell: 573-473-4904 • office: 660-291-5921

Photo ID Required for a Bidder Number; Payment of Cash or Check Only. Announcements Day of Auction Take Precedence Over All Advertising. Not Responsible For Accidents, Lost or Stolen Items.

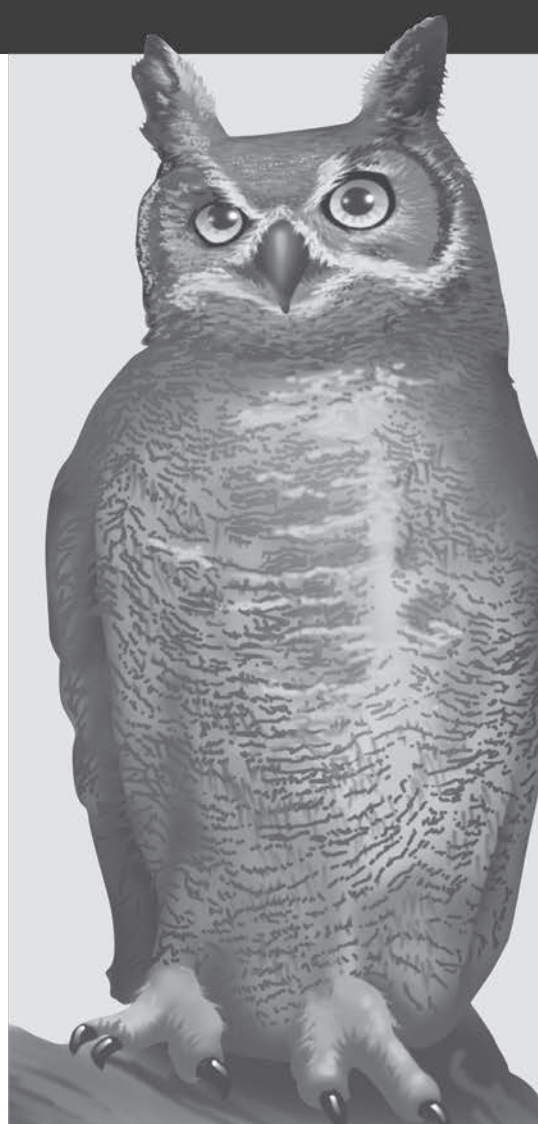
[jamesjohnstonauction.com](http://jamesjohnstonauction.com) Bill Dyke Estate - Virginia Dyke, Seller

# DO YOU MAKE...

A full **90%** of readers say their community newspaper keeps them informed. And **73%** said their local hometown newspaper provides them with valuable shopping and advertising deals!

You can attract thousands of prospects right where they live who are ready, willing and able to buy.

**PROMOTE YOUR SMALL BUSINESS WITH NEWSPAPER ADVERTISEMENTS!**



# SELL IT FAST

## IN THE CLASSIFIEDS!

# ...WISE DECISIONS?



**McAfee Auction Service, LLC**  
 375 S Johnson • Kahoka, MO  
 660-727-3796  
[www.mcafeeauctionservice.com](http://www.mcafeeauctionservice.com)

**TIMED ONLINE ONLY ESTATE MACHINERY AUCTION**

**LOTS START ENDING THURSDAY JUNE 2<sup>ND</sup> - 10 AM**

Equipment can be previewed at our office  
 375 S. Johnson St. Kahoka, MO



Selling Backhoe, Tractors, Truck, Trailer, Cargo Box, Misc. Equipment, Tools, Shop Related, Steel, Four Wheelers, Mower.



**THE ESTATE OF DAN LAGE**



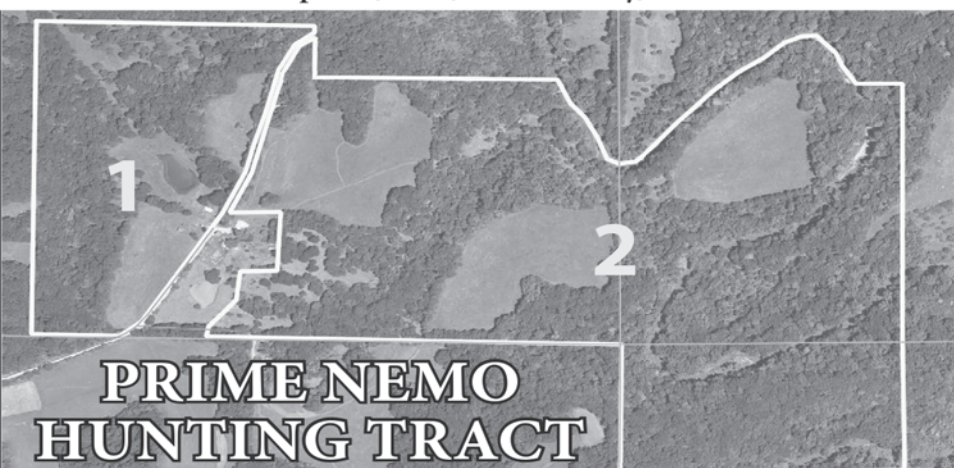
**McAfee Auction Service, LLC**  
 375 S Johnson • Kahoka, MO  
 660-727-3796  
[www.mcafeeauctionservice.com](http://www.mcafeeauctionservice.com)

**Clark County, MO LAND AUCTION**  
**TUESDAY, JUNE 28<sup>TH</sup> - 6 PM**

Sale will be conducted at the Care Building located at  
 451 N. Vine Street Kahoka, MO

**143 +/- ACRES/2 TRACTS**

Lying in Sect. 36, Twp 64N, R7W, Sect. 31, Twp 64N, R6W & Sect. 6, Twp 63N, R6W, Clark County, MO



**PRIME NEMO HUNTING TRACT**

**EMMA GOLLIHER, SELLER**



**McAfee Auction Service, LLC**  
 375 S Johnson • Kahoka, MO  
 660-727-3796  
[www.mcafeeauctionservice.com](http://www.mcafeeauctionservice.com)

*Lewis County, MO*  
**LAND AUCTION**

Sale conducted at the Queen of Peace Hall, Ewing, MO

**96 +/- ACRES**

(Subject to Final Survey)

Lying in Sections 28 Twp. 60N, R7W Lewis Co, MO  
**Recreational Hunting Tract**

**Tuesday, June 14<sup>TH</sup> at 6 PM**



Quonset Building

**MIKE SCHMIDT, SELLER**



**McAfee Auction Service, LLC**  
 375 S Johnson • Kahoka, MO  
 660-727-3796  
[www.mcafeeauctionservice.com](http://www.mcafeeauctionservice.com)

**MARION CO, MO RESIDENTIAL REAL ESTATE AND PERSONAL PROPERTY AUCTION**

**SATURDAY JUNE 25<sup>TH</sup> - 10 AM**

Located at 1201 W. Ross Street / 168 West, Palmyra, MO



Selling an attractive 3 bedroom brick home with basement & 2 car garage.



52x90 Pole Building

**OPEN HOUSE: SUNDAY JUNE 12<sup>TH</sup> - 1-2 PM**

Also selling 4 Oliver tractors, shop related, a large selection of collectibles and antiques, and common household items.

**COMPLETE DETAILS ONLINE!**

**THE FAMILY OF HAROLD & ALMA SCHWARTZ, SELLERS**



# LAND AUCTION

CLIFTON HILL, MO \* HUNTSVILLE AREA

THURSDAY, JUNE 2, 2022 @ 10 AM

Jeanie has decided to sell her family farm at public auction, so don't miss a rare opportunity to purchase a small acreage farm in a great location. Farm sells on site! From Hwy 24 take Cr 2030 1 1/2 miles south to farm or from Hwy 3 south take Cr 2020 1 mile to farm. Watch for Iman Auction Signs!



21

Call Wayne Dunwoody W/ C21 McKeown & Associates @ 660-651-2079 or 660-263-1789

40 Acres m/l of partially open grass land with heavy wooded draws \* Excellent hunting \* 1 Pond \* Older perimeter fences \* Property has county road frontage on 2 sides \* Great property to build your dream home on. Section 6 \* Township 53 \* Range 15 \* Randolph County

TERMS: 10 % down auction day with balance due and possession given at closing within 45 days. Title insurance provided by the seller, taxes prorated to the date of closing, farm sells with owners' confirmation.



**Gobblers' Knobb Farms LLC, Seller**  
KENNY & JEANIE COLLEY

IMAN AUCTION COMPANY | 660-388-6235 | ImanAuction.com

# FARM EQUIPMENT AUCTION

740 CR 102 - FAYETTE, MO \* HARRISBURG AREA

WEDNESDAY, JUNE 1, 2022 @ 10 AM

Due to the death of my husband Alan, I will sell our entire lineup of farm machinery. Auctioneer's note: Come spend the day out on the farm and purchase a good lineup of farm Machinery.

POLARIS RANGER - JOHN DEERE GATORS - TRACTORS - COMBINE - HEAD - HEADER TRAILERS - DOZER - DIRT SCOOPS - MOTOR GRADER - TILAGE EQUIPMENT - PLANTERS - DRILL - DITCHER - SHREDDERS - MOWERS - GN GRAIN TRAILER - GRAIN CART - TRAILERS - TRUCKS - ZERO TURN MOWER - LARGE VISE - TOOLS - FARM ITENS - PONTOON BOAT - BOATS - NEW WASHER & DRYER - REFRIGERATOR - FREEZERS - ANTIQUES & MORE!



**Mrs. Alan (Sue) Sherry, Seller**

IMAN AUCTION COMPANY | 660-388-6235 | ImanAuction.com

CLASSIFIEDS  
WHERE BUYERS AND SELLERS MEET

## FIND THE PERFECT PET FOR THE PERFECT PRICE

Find your next fluffy, furry or feathered friend in your local newspaper classifieds!



# Need Your SPACES?

*Declutter With*

## The Classifieds!

**See how good it feels to rehome the stuff you're not using, and generate some extra income in the process!**

*Furniture, Electronics, Real Estate, Autos, Appliances, Handbags, Jewelry, Sporting Goods, Baby Gear, Bicycles, Tools & More!*