



**IT'S FREE**

**EVERY FRIDAY**

**NEMO**  
*Traders*

701 East LaHarpe St, Suite C,  
Kirksville, MO 63501 • P.O. BOX 809  
660-665-8500 or 660-988-6830  
Our New Email: sales@nemotrader.net

**CALL US FOR YOUR ADVERTISING NEEDS**

**FREE**

NEW EDITION EVERY FRIDAY!  
VOL. 29 • NO. 74 • JULY 1, 2022

# NEMO *Traders*

**THE NEMO TRADER**  
PO BOX 809 • KIRKSVILLE, MO 63501 • PHONE 660-665-8500  
Web Site: [nemotrader.net](http://nemotrader.net) • Email: [sales@nemotrader.net](mailto:sales@nemotrader.net)

A WEEKLY ADVERTISER SERVING ALL OF NORTHEAST MISSOURI AND THE SURROUNDING AREA



**JULY CONSIGNMENT SALE**

**Saturday July 2, 11:30 A.M.**

**LOCATION: 9471 HWY 36 HUNNEWELL, MO**

THIS SALE CONSIST OF AN ESTATE, MOTEL LIQUIDATION, THRIFT STORE LIQUIDATION, LOTS OF ANTIQUES, TOOLS GALORE, FURNITURE, TIRES & WHEELS, FIREWOOD, BARN WOOD & TIN, CONCRETE BLOCKS, SCRAP METAL PILE, LAWN & EQUIPMENT TRAILERS, LAWN MOWERS, DR. TRIMMER MOWERS, HOUSEHOLD STUFF, ITS TOO MUCH TO LIST NICE NICE STUFF ...

**2021 POLARIS XP100 RANGER PREMIUM "LIKE NEW"**  
**2002 FORD F-250 EXT CAB - 2017 UTILITY TRAILER**  
**LARGE ITEMS SALE AT 1:30 PM \* MORE NOT PICTURED**









*Shuckie's Auction & Appraisal Services of Hunnewell, Mo*

**Col. Ray Delaporte Associate Auctioneer**  
(573)-406-3783 / (573)-731-3300

**Col. Bryan Shuck Auctioneer**  
573)-822-3170 / (573)-731-3300

**LIVE MUSIC & FOOD ALL DAY \* FIREWORKS @ DUSK**

# WE GOT YOUR NEEDS COVERED!



**FARM TARPS      TRUCK TARPS  
HOOP BUILDING COVERS**

# Troyer

## TARP MFG.

### 660-486-3301

20264 STATE HWY. VV • ETHEL, MO 63539

#### Equipment & Supplies

2017 Carry-on 6'x8' treated lumber utility trailer with tall ramp gate Carlisle 8 plys, 2" coupler used very little, shedded, with title, \$1,250. 217-257-1385

8N Ford tractor, runs good. 660-626-7718.

5' Brush Cutter, pull type, 540 PTO, new U joints & hydraulic cylinders and hoses, \$375; old window wts make great anchors, \$3 each. 217-257-1385

#### Equipment & Supplies

Delta 6'x16' bumper livestock trailer 2 5/16" coupler, slam latch center gate, rear full swing gate w/slider, escape door, optional 7.50-16 8plys, 1 owner, always shedded, sold cows, \$6500. 217-257-1385

Bushhog 3210, 10' semi-mount, big gear boxes, dual laminated wheels, 540 pto, with hydraulic adjust, low acres used, \$6200.00. 217-257-1385.

**NEMOTRADER.NET**

#### Equipment & Supplies

Farmall 560 gas, Schwartz wide front, good 15.5x38's, fast hitch, fenders, owned for 19 years uses no oil, \$2,500. 217-257-1385

Farmall 706 gas, 1966, 72 HP, factory wide front, flat top fenders, fast hitch, new seat, lot of recent work done with new parts, runs good with Dunham Lehr hydraulic bucket loader, \$6500. 217-257-1385

International Square hay balers #430, #45, and #46. 573-674-3601

IHC 1020 20' floating platform; IHC 1020 17 1/2' floating platform; NH 973 20' 20' floating platform; NH 973 25' floating platform. 217-658-4761

JD 670 rake, rubber teeth, dolly wheel, new tires, \$1750.00; NI spreader ground driven, \$450.00; Case spreader ground driven. 217-658-4761

Call about our classified ad specials. 660-665-8500.

### Golden Grain Bins-Spring Discount

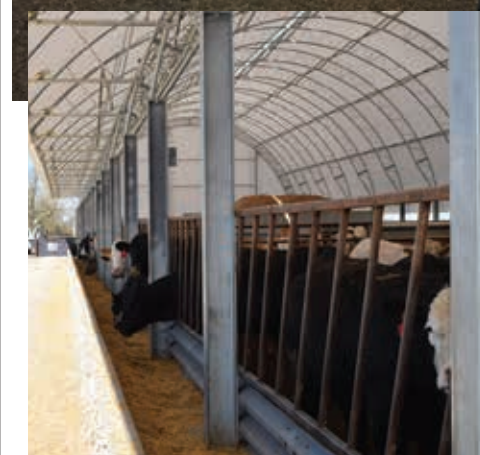
Grain Bins	Floors w/12" Supp. & Flashing
18'x18' 4,195bu. \$ 7,398	18'.....\$2,065    30'.....\$ 5,764
27'x21' 11,265bu. \$14,850	21'.....\$2,824    36'.....\$ 8,211
42'x24' 32,245bu. \$34,617	27'.....\$4,710    42'.....\$11,182



**GMLS Industries, Inc.**  
PH: 660-699-2179 or 620-983-2136  
www.gmlsindustries.com

647109ch

## Animal Housing, Hay Storage & Much More!!



# Skylight Fabric Structures

20749 State Highway VV  
Ethel, MO 63539  
660-486-3250  
833-482-8862

641057ch

Your Local **FARM SUPPLY SOURCE**

NUTRITION • MEDICAL • FARM • PET • APPAREL

Featured Product



## 10' BUNK FEEDERS \$15 OFF THIS MONTH

Hometown Animal Health has provided quality products, expert knowledge, and friendly customer service to northeast Missouri and surrounding areas. We are a full-service nutrition, medical, and farm supply source carrying complete lines of animal feed and supplies, farming equipment, agricultural parts, lawn and garden tools, work apparel, and much more!"

**Hometown ANIMAL HEALTH**

Feed • Medical • Farm & Pet Supplies • Footwear & More

website: [hometownanimalhealth.com](http://hometownanimalhealth.com)

### 660-465-2967

18743 US Hwy, 136 Memphis, MO 63555  
"on Hwy 136 west of Memphis"

Monday-Friday 8pm to 5pm  
Saturday 8am to 1pm

#### Equipment & Supplies

JD 930 Poly driven, poly under; JD 220 Poly under; JD 216 Poly under; HD cart for 30' JD flotation tires, \$750.00 other HD carts. 217-658-4761

1966 John Deere 3020, gas, 5082 hours, wide front, new paint, just rebuilt clutch, 540 and 1000 PTO, ROPS available, nice shape, runs good, ready to work, \$10,000. 660-684-6977

John Deere original roll bar and canopy for most American built utility tractors, includes seat belts and bolts, \$275. 660-342-4223.

John Deere power take off for two cylinder 430W tractor, complete bolt on unit, \$250.00. 660-342-4223.

Kewanee 14' disc with cylinder, good \$700; Fast hitch to 3 pt., 1 piece adapter \$125, Fast hitch to 3 pt. prongs \$120. 217-257-1385

Krone AM 322, 3 PT., disc mower, 540 PTO, new blades, shedded, manuals, good condition, \$3700. 217-257-1385

WANTED TO BUY: Farm Machinery and Estates. Call James L. Johnston. 573-473-4904

#### Hay/Feed/Seed

## CRP SEED MIXES

Iowa, Illinois and Missouri's longest running grower, seed supplier, installer W/seed purchase, cedar tree mowing, spraying, retailer and wholesaler of CRP SEED MIXES since 1987.

**OSENBAUGH PRAIRIE SEED FARMS**

the cover crop, CRP and prairie experts.

CRP MIXES • WILDFLOWERS • PRAIRIE GRASSES  
CUSTOM SEEDING • SEEDING EQUIPMENT RENTAL

john@prairieseedsfarms.com  
641-766-6790

800-582-2788 or 800-lucas88

#### Equipment & Supplies

New Holland 275 square baler in excellent shape, New Holland 269 square baler, lots of new parts; 7x14' Hay wagon with 2 1/2' sides and hoist; 3 PT Boom. 573-795-3387

MF 850 Combine diesel, 30.5x32 tires, chopper, chaff spreader; IHC 1440 diesel combine, MF 750 combine diesel; MF 918 platform. 217-658-4761

#### Equipment & Supplies

New Holland 475 manure spreader, PTO 540, outstanding floor that is original, ready to use, metal sides, \$3200. 217-257-1385

New Holland LS180 skid loader, 2861 hours, open station, aux hyd, hand and foot control. Just serviced, good running machine. \$17,500.00 660-639-2111

NI 5112 hyd swing haybine; IHC 1300, 3 PT bar mower; round balers, Vermeer 605 C; 605 D; JD 500; NH 851; \$500.00 each. NH 855 \$750.00 217-658-4761

Small wheel disks Kewanee 8', Kewanee 12', JD 10', IHC 470 15' dual wheels; 2 row 3 PT cultivator; plows 2 3 or 4 bottom, 3 PT. 217-658-4761

#### Cattle

Registered Angus 18 month old bulls, semen tested, ready for service. Lee Lemmon, Williams-town, MO. 573-853-4550, 660-216-7362 or 660-216-2616.

**FOR SALE**  
AI Sired Angus Bulls,  
14 & 18 Months Old.  
Harold Trump  
660-341-5730

#### Hay/Feed/Seed

Small square bales good quality grass hay, \$4.00 per bale. 660-341-5537

Need something? Let us help you. You can advertise that you are looking for a special item. Call 660-665-8500 for more information.

# READY TO CAPITALIZE ON RECORD LAND VALUES? CALL THE LAND SPECIALISTS.

— OVER —  
6,000 ACRES SOLD OR PENDING  
IN 2022 BY THE JEFF PROPST TEAM.

Sullivan, MO - 580 Ac.  
Mercer, MO - 660 Ac.  
Adair, MO - 112 Ac.  
Schuyler, MO - 161 Ac.  
Clark, MO - 198 Ac.  
Mercer, MO - 399 Ac.  
Linn, MO - 77 Ac.  
Mercer, MO - 40 Ac.  
Mercer, MO - 80 Ac.  
Van Buren, IA - 425 Ac.  
Knox, MO - 105.6 Ac.  
Mercer, MO - 71 Ac.  
Mercer, MO - 160 Ac.  
Adair, MO - 172.1 Ac.

Mercer, MO - 609 Ac.  
Putnam, MO - 515 Ac.  
Mercer, MO - 151 Ac.  
Mercer, MO - 78 Ac.  
Sullivan, MO - 580 Ac.  
Chariton, MO - 80 Ac.  
Putnam, MO - 290 Ac.  
Putnam, MO - 44 Ac.  
Mercer, MO - 195 Ac.  
Clark, MO - 82 Ac.  
Sullivan, MO - 36.2 Ac.  
Mercer, MO - 62 Ac.  
Mercer, MO - 41.55 Ac.  
Mercer, MO - 517 Ac.

CONTACT ME TODAY TO LEARN MORE ABOUT SELLING YOUR  
HUNTING, FARMLAND OR PASTURELAND ON THE OPEN  
MARKET OR TAKING IT TO AUCTION.

## JEFF PROPST

Whitetail Properties Real Estate LLC.  
Agent, Land Specialist Northeast  
& North Central Missouri

**636.209.0362**

jeff.propst@whitetailproperties.com



WHITETAIL PROPERTIES REAL ESTATE

HUNTING | RANCH | FARM | TIMBER

**WHITETAILPROPERTIES.COM**



A DIVISION OF WHITETAIL PROPERTIES REAL ESTATE, LLC

**RANCHANDFARMAUCTIONS.COM**

Whitetail Properties Real Estate, LLC DBA Whitetail Properties, DBA Whitetail Properties Real Estate. In the States of Nebraska & North Dakota DBA Whitetail Trophy Properties Real Estate LLC. Licensed in CO, MN, ND, SD, TN & WI - Jeff Evans, Broker. Licensed in FL, KS, MO, OH & PA - Jefferson Kirk Gilbert, Broker. Licensed in TX & NM - Joey Bellington, Broker. Licensed in IN - Bill Minor, Broker. Licensed in AL, GA, LA, & MS - Sybil Stewart, Broker. Licensed in TN - Tim Burnette, Broker. Licensed in TN - David Pritchard, Broker. Licensed in AR - Anthony Chrisco, Broker. Licensed in NC, SC, VA - Chip Camp, Broker. Licensed in IA, NC - Richard F. Baugh, Broker. Licensed in MI - Edmund Joel Nogaski, Broker. Licensed in IL, MD, WV - Debbie S. Laux, Broker. Licensed in ID, MT, OR, UT, WA, & WY - Aaron Milliken, Broker. Licensed in NY - John Myers, Real Estate Broker. Licensed in OK - Dean Anderson, Broker. Licensed in KY - Derek Fisher, Broker. Licensed in OH - Jeremy Schaefer, Principal Broker. Licensed in NE - Jason Schendt, Broker.



**KIRKSVILLE LIVESTOCK LLC**  
 24295 Benton Road \* P.O. Box 242 \* Kirksville, MO 63501  
[www.kirksvillivelivestock.com](http://www.kirksvillivelivestock.com)  
**SPECIAL BRED HEIFER, COW & BULL SALES 6:00 P.M.**  
**SPECIAL CATTLE SALES 11:00 A.M.**  
**SPECIAL SHEEP SALES 10:00 A.M.**

**2022 Sale Dates:**  
 July, 2022  
 \*Monday, July 4\* - \*INDEPENDENCE DAY\* NO SALE  
 Friday, July 8 - Special Breeding Stock Sale, 6:00 p.m.  
 Monday, July 11 - Special Hog, Sheep, & Goat Sale, 10:00 a.m.  
 Monday, July 18 - Special Feeder Cattle Sale, 11:00 a.m.  
 Monday, July 25 - Regular Sale, 11:00 a.m.

Check website for updated listings: [www.kirksvillivelivestock.com](http://www.kirksvillivelivestock.com)

**"Proud to Serve Area Livestock Producers"**  
 For more information or Someone to Look at your Livestock Phone:  
 We are open on Sunday to Receive Your Livestock  
 "Your Business is Very Much Appreciated"

Patty Foster, Office Manager ~ 660-665-9804  
 Chuck Ambrosia ~ 660-342-3530 Luke West 620-215-5770  
 Mark Herbold ~ 515-720-8667 ~ Al Ashmead ~ 660-216-8730  
 Jeremy Jarman ~ 660-341-9879 ~ Daniel Smith ~ 660-341-8396  
 Caleb Randolph ~ 641-919-8539 ~ Doug Fleshman ~ 660-626-7148  
 Karol Kirkpatrick ~ 641-777-3403

**Edina Livestock Sales**  
 Edina, Missouri

**Friday, July 1st**  
**No Sale - Happy 4th of July!**

**Friday, July 8th**  
**Special Feeder Calf Sale**  
 Several yearlings consigned

To Consign For Any or All Sales or For Information Call:  
 Owner - Kevin Strange • Cell: 660-341-9974  
 Ryan Strange • Cell: 660-341-9721  
 Sale Barn: 660-397-9999

**Field Reps:**  
 Bill Tom Hall 660-342-5420 Mike Bronestine 660-341-9965  
 Jason Bichsel 660-216-0373 John Powell 660-341-1717

**Miscellaneous**  
 Home grown tomatoes, 3 pounds for \$7.00 or \$2.50 a pound. Cabbage, onion, zucchini squash and other vegetables. Schmucker Produce, 7 miles North Kirksville to Ft. Madison Way, then 1/2 mile East.

**Hobbies**  
 Winchester model 97, 12 gauge, full choke. Great conditions, \$375.00 or best offer. 319-838-2661.

**Lawn & Garden**  
 1991 John Deere 420 lawn tractor 1076 hours. 60 inch deck, hydraulic deck lift, front hydraulic outlets, new electric clutch and drive pulley to engage blades \$2100. 660 216 5178

**Pets & Supplies**  
 Chinchilla, very friendly, great pet, \$100.00. Call 660-216-4696.  
 Dachshund puppies, APRI registered, shots and wormed. Black/tan, dapple, peds and blue. \$800.00 each, call or text 660-216-4696.

**Livestock**  
 Fish for stocking ponds. Catfish, Grass Carp, Crappie, Bluegill, Redear, Bass and minnows. Heindselman Family Farms. Call Greg 660-341-5692.  
 Goats - ADGA Registered 10 week old Nigerian dwarf doeling and buckling goats. ADGA Registered Toggenburg goats 3 year old proven buck and doe, yearling doe. Fowler IL 217-440-5076

**MERCHANDISE**  
**Sports Equipment**  
 Hoyt RZ-200, left handed bow, \$100.00. 319-838-2661.

**Miscellaneous**  
 Home grown tomatoes, \$10.00 a box. Zucchini, cucumber, onion, cabbage, \$.50 each. Beets, soon have potatoes, beans, canning tomatoes. Schmucker 7 miles North Kirksville to Ft. Madison Way, East 1/2 mile.  
 Reunion, benefits, social events, nothing like fresh catfish, whole/fillets \$10.99/\$11.99 a pound. Also home grown beef and hogs whole and halves. 800-807-9612

**How much do YOU care about Deep Cleaning?**

**Green Acres Sew & Vac**

**Come see Us or Call for....**

- Bernina and Bernette Sewing Machines & Sergers
- Bernina accessories
- Floriani Embroidery Sewing & Quilting Products
- Sewing Machine And Vacuum Service & Repair
- Sewing Machine Cabinets
- Riccar Vacuums
- Simplicity Vacuums

**221 W Grand Ave. Memphis, MO 660-465-7131**  
[greenacressewvac.com](http://greenacressewvac.com)

**GREEN CITY LIVESTOCK MARKETING, LLC**  
 19037 HWY 129 S. GREEN CITY MO 63545  
 (660) 874 - 4146 • [www.greencitylivestock.com](http://www.greencitylivestock.com)

**NEXT SALES:**  
**Wednesday, July 6th**  
 Annual Customer Appreciation Sale  
**Wednesday, July 20th**  
 Special Calf & Yearling Sale

1,098 were sold at the June 22nd Special Calf & Yearling Sale. Compared to the last sale three weeks ago, steers and heifers sold 4.00 to 7.00 higher, spots up to 12.00 higher particularly on heifers. Slaughter cows 5.00 to 7.00 higher. Very active trade this week with several stick out prices. Overall quality was slightly below average ahead of the Annual Beef BBQ Special two weeks from now.

STEERS		HEIFERS	
John Kauffman	410 Ang 200.00	Adair Co.	739 Ang 175.50
Bill Young	422 Mix 204.50	Jeff Taylor	758 Ang 167.50
Jay & Meghan Smith	435 Ang 200.00	Campbell Farms	806 Mix 164.50
Tim Doty	458 Ang 203.00	Mino Farms	829 Mix 162.25
Carroll & Benji Walker	460 Ang 196.00	Harlan & Jackie Buster	893 Ang 159.50
Elaina Head	461 Ang 222.00		
Beau Hepler	469 Ang 219.00	Jay & Meghan Smith	422 BBWF 181.50
James Kearns	500 Ang 200.00	Elaina Head	426 BBWF 195.00
Robert Foster	506 Ang 219.50	Robert Foster	451 Ang 190.25
Vern Stottlemire	508 Ang 195.00	John Kauffman	479 Mix 183.50
King & Carmack	509 Ang 217.50	Travis Carmack	480 Ang 171.00
Walt Estate	521 Ang 213.00	Kay Young	489 Mix 186.50
Dennis Clapp	531 Ang 219.00	Bill Young	522 Ang 182.00
Gail Claybrook	545 BBWF 204.50	Gail Claybrook	550 Ang 173.50
Biggs Angus	553 Ang 213.00	Paul & Leslie Ewigman	587 Ang 184.00
Paul Ewigman	570 Ang 209.00	Adair Co.	604 Ang 170.00
Oscar Mensa	576 Ang 213.00	Furnish Farms	613 Mix 181.25
Furnish Farms	582 Ang 214.00	Oscar Mensa	616 Ang 175.00
Norvel Lane	583 Ang 192.50	Beau Hepler	621 Ang 160.50
Bruce & Ronald Jacobs	585 BBWF 207.75	Robert Norfleet	630 Ang 171.60
Beau Hepler	586 BBWF 194.00	Harold Moore	636 BBWF 165.00
Harold Moore	613 Ang 205.75	Bruce & Ronald Jacobs	673 Ang 165.00
Robert Foster	616 BBWF 210.00	Jeff Taylor	756 Ang 161.50
Norma & Phillip James	618 BBWF 194.50	Mino Farms	757 CharX 155.25
Robert Norfleet	645 Ang 190.50	Campbell Farms	775 Ang 149.50
Rick & Lane Thurlo	653 Ang 182.50		

**WEBSITE:** [www.greencitylivestock.com](http://www.greencitylivestock.com) • **BARN:** 660-874-4146

**OWNERS**  
 Darren Hodgen: 573-999-3252 • Cody McClamroch: 660-349-6535  
 Caleb Biggs 660-654-4630 • Operations Manager: Steve Evans, 660-375-2545

**FIELD REPS**  
 Chuck Daniels: 660-626-7621  
 Steve Frazier: 660-626-7066 • Jeff Gray: 660-956-8251  
 Justin Morgan: 660-292-2638 • Coltan Jennings: 660-373-0296  
 "We are your top market for all classes of cattle"  
 We value and appreciate your business!

**SHULTZY'S FIREWORKS**

Located in Kirksville & LaBelle  
 • 2120 N Baltimore St., Kirksville •  
 • 11218 State Hwy 6 Kirksville, LaBelle •

**OPEN JUNE 20TH - JULY 5TH**  
 (July 10th in LaBelle)

Shop Indoors  
 Online Ordering Curbside Pickup Available At Kirksville Location  
 Locally Owned

Sunday - Thursday 9am - 8pm • Friday - Saturday 9am - 10pm  
[www.shultzysfiresworks.com](http://www.shultzysfiresworks.com)  
 660-216-9746



**HARRISON FISHERY, INC.**  
IS A FAMILY OWNED AND  
OPERATED BUSINESS.

**WE STOCK  
MOST SPECIES  
FRESHWATER,  
GAME &  
BAITFISH.**



**CONTACT US  
FOR A PRICE  
& DELIVERY  
660-423-5482**

[www.harrisonfishery.com](http://www.harrisonfishery.com)



**LAN-DOW BUILDINGS**

**"We Build To Suit Your Needs"  
"Custom Built"**

Pole Barns • Garages • Utility Buildings  
"H" Don or Dick Middleton

**Memphis Lumber Co.**  
1-800-337-5858 • 660-465-8595  
Fax: 660-465-8596

**LANCASTER LUMBER INC.**

**Lancaster, MO.**

**1-800-424-5071**

**LAN-DOW BUILDINGS**

[www.lancasterlumber.com](http://www.lancasterlumber.com)



**Services**

Green City Milan Kirksville  
660-951-8430 • 660-951-8432 • 660-951-8431  
[www.farmbank.com](http://www.farmbank.com)

**Notices**

**CHILlicothe AREA ARTS COUNCIL PRESENTS**  
**"Liverpool Legends"**  
*Ultimate Beatles Tribute Band*

3 p.m., Saturday, July 9, 2022  
Adults \$40 • Students \$25 K-College  
VIP Seating Available \$50, call to reserve

Gary Dickinson Performing Arts Center  
2800 Hornet Drive, Chillicothe

For more information, contact the  
CHILlicothe AREA ARTS COUNCIL  
660-646-1173 [arts@chillicothemom.com](mailto:arts@chillicothemom.com)

**Notices**

Professional Theatre in  
Upstate Missouri  
102 N. Rubey St.  
Macon, Mo 63552  
660-385-2924  
[maplesrep.com](http://maplesrep.com)

**The 2022 Season is  
OPEN NOW!!**

 The Great American Trailer Park Musical: June 15 - July 10	 The Nerd: June 24 - July 31	 Hank Williams: Lost Highway: July 15 - August 7
---	------------------------------------	---

Adult: \$33    Season Ticket: \$162  
Student: \$22    You Pick Four: \$120  
Group Rate: (12+): \$28

**Y'ALL Come BACK NOW**

**Industry**

**CONAGRA BRANDS**

Conagra Brands in Macon is now hiring for all shifts, both full-time and part-time positions in Production, Sanitation and Maintenance.

**WEEKLY ATTENDANCE & EMPLOYEE REFERRAL BONUS**

Join the Conagra Brands team in Macon with competitive hourly starting pay of \$18.37 per hour, and an excellent benefit package that includes medical, dental, vision and life insurance.

Salary positions in Sanitation and Maintenance are also available.

Open interviews are conducted each Wednesday in the plant between 9 AM and 11 AM, and other times by appointment.

Apply online at [jobs.conagra.com/careers](http://jobs.conagra.com/careers) and follow the links to submit your application OR text Conagra to 25000.

**Pets & Supplies**

Shitzu puppies, shots and wormed, 7 weeks old, ready to go. 100% pure-bred, no shedding. Can deliver. \$1200.00. 641-814-2556, text 802-578-7324.

**HAVE A PET OR PUPPIES TO SELL?** Call us. You can even pay over the phone. 660-665-8500.

**Building Supplies**

**Premium Metal Roofing**

**A W Metal Inc.**  
Metal Roofing Headquarters  
641-664-3990 • [ammetail.net](http://ammetail.net)

**4th JULY PROMOTION**  
BUY A 22X26X8 2 CAR GARAGE & RECIEVE A FREE TOOL BOX!!!!

**BUY A 22x26x8 GARAGE**

**ONLY \$9201.00**

**AND GET A FREE TOOL BOX WITH PURCHASE**

9471 HWY 36 SUITE #B HUNNEWELL, MO 63443 (573) 731-3300

**TRI STATE ALL CREDIT BUILDINGS** LEGACY AUTHORIZED DEALER

**ATV's**

**PRECISION CYCLE**

2318A E. Illinois, Hwy. 11 E. Kirksville, MO 63501 | (660) 665-2957

**Wood & Accessories**

Wevers Outside Wood Furnaces, have an assortment of parts, line, and etc. Call 660-423-5242, cell 660-216-9885. Open 6 p.m. - 9 p.m. Monday - Friday, Saturday anytime, call first.

**Clothing**

**ANNOUNCEMENTS**

**Notices**

Powersville Independence Celebration Saturday July 9th, playing will be Red Brush Band, Fireworks at dusk. Bring Lawn Chairs and Refreshments. All Donations go toward Fireworks and Band.

**LOCALLY OWNED & OPERATED!**

**D&D'S SCREEN PRINTING & embroidery studio**

**SCREEN PRINTING EMBROIDERY SHIRTS + HATS TROPHIES, AWARDS & PLAQUES BANNERS AND MORE!**

**660.665.8001**   
[KIRKSVILLESHIRTS.COM](http://KIRKSVILLESHIRTS.COM)

**NEXT WEEK -Bidding Opens**  
**07.05.22 @ 9am**

**34903 NATURE AVE, Macon, Missouri, 63552**



**ONLINE AUCTION**

**Bidding Opens July 5th, 9am**  
**Closes July 7th, 2pm**  
**MissouriLandAndHome.com/Auctions**

**\*5% Buyers Premium**

**United Country Real Estate Missouri Land & Home**

Contact Justin Pollard, Realtor  
 660-346-8840 | Justin.MoLandAndHome@gmail.com  
 800-895-4430 | MissouriLandAndHome.com  
 3516 I-70 Dr. SE, Ste. A, Columbia, MO 65201

MissouriLandandHome.com/Auctions

**Acres & Lots-Sales**

Interested in buying 40-80 acres in Randolph, Macon, Adair, Schuyler and Surrounding Counties. 636-388-5738

Farm For Sale: 80 Acres, creeks, corral, dividing fence, mobile home currently rented. 1 Mile from NEMO Fairgrounds, location is very private, \$450,000 Please leave a message or text, 319-530-8070

**Homes For Sale**

31 Acres with 2 bedroom house, 1 bath, Iowa/Missouri Line located on the Missouri side in Lancaster. 660-341-9198

**Mobile Homes For Sale**

AVAILABLE stock mobile homes immediately, double wide and single, 3 and 4 bedroom. 573-499-9993 columbiadiscounthomes.com

**Mobile Homes For Sale**

Stock mobile homes available: We gottem, single and doublewide 3 and 4 bedroom! Call Tuffy 573-657-2176 amegamobilehomes.com

True modulars 30 to 60 day delivery available, 3 and 4 bedroom. 573-657-7040 chateauhomes.net

**NEMOTRADER.NET**

**Backhoe/Bulldozer**

**Show Me Plumbing Services**

- General Mini Excavation & Skid Steer Work
- Livestock Watering
- Waterlines & Sewer Systems
- Residential Services & General Plumbing
- Utility Trenching

**Stan Schrock 660-988-1163**  
**Greentop, MO 660-766-2636**

**Bush Hogging**

**ATTENTION LAND OWNERS!**

**BUYER OF STANDING TIMBER**  
**OWNER/OPERATOR OF SAWMILL - BUY/CUT LOGS**  
**CERTIFIED - BONDED - INSURED**

TRI STATE TIMBER L.L.C.  
 PH. 660-341-4921 or 660-465-2975  
 353 1/2 GRAND AVE. • MEMPHIS, MO 63555

**Campers & Trailers**

**RECREATION**

**ATV's**

2017 Kawasaki Mule Pro, 1660 miles, camo top, windshield, stereo, never mudded. Excellent condition, \$15,000. 660-216-9980.

**Boats & Motors**

1987 Holiday Rambler 33' Camper, AI condition, light use, stored inside. 319-330-9729

**Campers & Trailers**

2014 Cougar High Country camper 327RES. 2 ac units, automatic leveling, 3 slide-outs with awnings, electric fireplace. Call 660-359-1265 for more information and pictures. Asking \$31,000.

**Motorcycles**

2009 Kawasaki Concours, 1400 CC, one owner, always garaged and serviced. 319-795-6804 or 319-524-6520, leave message

**Air Conditioning/Heating**

**The Ultimate Wood Heat.**

**CLASSIC EDGE**  
 PREMIUM HD SERIES  
 Outdoor Wood Furnace

- More Comfort - Thermostatically controlled wood heat.
- Peace of Mind - Keep the fire outside and eliminate the dangers associated with indoor wood heating.
- Save Money - Wood is a renewable, inexpensive and often free energy source.

**CAMPEN**  
 Heating & Air Conditioning  
 573-288-8966  
 Canton, MO  
**CentralBoiler.com**

**MOOSE RUN REPAIR**  
 9 YEARS EXPERIENCE

**NEW LOCATION GREENTOP, MO ON US HWY 63**

Tractor • Skid Steer • Combine • Air Conditioning  
 Self-propelled Forage Harvester & General AG Repairs

**Specializing in John Deere**

Engine • Transmission • Hydraulics  
 Power Shift/IVT Diagnosis & Repair  
 Computer/Electronic System Diagnosis & Repair

**660-988-3843**  
**DELVIN "MOOSE" STEINER**  
**GREENTOP, MO**

**Cleaning**

**Scrubby Duds**  
**LAUNDROMAT**  
**OPEN 24/7**

Unfortunately, laundry doesn't wash itself. Might as well be comfortable while you do it.

**Scrubby Duds - Cool, Clean & Comfortable!**

**311 S Baltimore St**  
**Phone: 660-349-8943**

**Home Services**

**Signature**  
 Overhead Doors and Remodeling, LLC

**660-785-0248**

[www.signatureremodelingkv.com](http://www.signatureremodelingkv.com)

Residential and Commercial Installation and Service

**RECREATION**

**Motorcycles**

WANTED TO BUY: Harley Davidson's, any year, any condition, cash money. Days 660-263-1356 or 660-537-0068

**Wanted**

WANTED TO BUY: Harley Davidson's, any year, any condition, cash money. Days 660-263-1356 or 660-537-0068

**NEED TO SELL YOUR HOUSE OR PROPERTY?** Get the best coverage around. Call the NEMO and our helpful representatives will assist you in creating your ad. You can even pay over the phone. Call 660-665-8500 for more information.

**Tree Service**

**Construction-Services**

**SPRAY FOAM INSTALLATION!** We install open and closed cell spray foam. Strengthen your building and block drafts! Over 1 Million sq. ft. applied. Contact Lexter at 641-208-7071, Spray Tex LLC 16302 192nd Street Bloomfield IA 52537

**Chat/Dirt/Gravel**

**DIRT WORK** All types of excavation, reclaiming overgrown fields, including CRP and WRP. Building site preparation, creating new trails and crossings, Food plot development and maintenance. Leveling and grading, wetland construction and maintenance. Pond and lake cleaning and construction. Call for quotes. 660-342-2701

**Beilstein CAMPER SALES**

**CALL US NOW for the best prices...**

28248 327th Ave.  
 LaGrange, MO • Hwy 61 South,  
 4 Miles South of LaGrange, MO

**573-655-2254**

<p><b>#08989</b></p> <p><b>\$54,995</b></p> <p><b>2022 Salem Hemisphere 310BHI</b>                  Top Of Line, 3 Slide-Outs, Rear Bunks, Outdoor Kitchen</p>	<p><b>#076249B</b></p> <p><b>\$28,995</b></p> <p><b>2015 Salem Hemisphere 272RLIS</b>                  2 Slide-Outs, Rear Entertainment, Island Kitchen</p>	<p><b>#295BH</b></p> <p><b>\$38,995</b></p> <p><b>2022 Keystone Springdale 295BH</b>                  Large Slide-Out, Rear Bunks, Front Queen Bedroom</p>
<p><b>#109947</b></p> <p><b>\$22,420</b></p> <p><b>2022 Keystone Springdale Single Axle 1760BH</b>                  Light Weight, Slide-Out, Bunks</p>	<p><b>#810602</b></p> <p><b>\$15,995</b></p> <p><b>2020 Prime Time Avenger LT 16BH</b>                  Easy To Tow, Rear Bunks</p>	<p><b>#429686</b></p> <p><b>\$35,995</b></p> <p><b>2022 Salem Cruise Lite 24RLXL</b>                  Slide-Out, Rear Living Room, Front Queen Bed Room</p>

**Beilstein Camper Sales**

[www.beilsteincampersales.com](http://www.beilsteincampersales.com)

Since 1956, family owned Beilstein Camper Sales has provided exceptional value and service to our customers. We feature a wide selection of new RVs from Forest River, Heartland and Keystone. We're on the Avenue of the Saints along side Highway 61, four miles south of La Grange, Missouri. Stop by today to get a great deal!

**TIMBER MANAGEMENT.**

*Purchasing Walnut, Oak, Maple & Other Species*

**WE PAY BEFORE WE CUT**

**BONDED & INSURED**

**641-895-8209**

Est. 1968



**! AVOID INTERNET SCAMS**

**Hand Pick Your Exact Storage Unit!**

**DIMENSIONS:**  
8' WIDE X 8 1/2' TO 9 1/2' TALL X 20' OR 40' LONG  
**NOW OFFERING 8' LONG!**



**ALL UNITS WATERPROOF & MOUSE PROOF!**

These NEW or USED shipping containers consist of corrugated steel. LOW MAINTENANCE!

**GLOBAL STORAGE SYSTEMS, LLC**  
Located on Highway 63, 9 miles south of Kirksville, 1 mile north of LaPlata.  
660.341.7343 • 660.341.8080 • globalstoragesystem.com

Miscellaneous

**Tru Meat Processing**

**COMING SOON!!**

Taking orders for custom meat processing.  
Selling live beef from our farm by whole, halves, or quarters, can be processed at our facility.

Fill your freezer with quality beef. Hormone and antibiotic FREE!

Contact the Hostellers

Office: 573-439-5290 7500 Shelby 352  
Sam: 573-789-3012 Shelbina, MO  
Amos: 573-934-3391 63468

**NEMO ADS SELL!** Call for more information and specials. 660-665-8500.

**BE AN EARLY BIRD!** Place your ads before Monday and beat the rush!

**CELEBRATIONS PARTY RENTAL**  
KIRKSVILLE, MO

FOR RENT

- Tables & Chairs
- Tents • Bounce House
- Cotton Candy Machine & More!

660-626-5162 or 660-665-9380

Are you having a garage sale or rummage sale? Call us to advertise. 660-665-8500.

Have Clutter? Need room? Call the NEMO classifieds. We can help! 660-665-8500.

**JAGUAR LUMBER**  
Attn: Land Owners

Buyer of Timber  
\*All species also Select yard Trees/Logs over 40" diameter,  
\*Trees are selectively cut to insure optimal Forest Regeneration.

Certified & Bonded | Lavon Gingerich 641-664-2080

Miscellaneous

SCOTT HUSKEY'S HOME SERVICE R-10 Foundation Enclosure Systems for manufactured, modular, & site built homes. Saves on utilities and prevents freeze ups. General maintenance and repairs since 1972 573-696-3468 "GO DAWGS"

Miscellaneous

Tomatoes \$2.00 lb, Zucchini \$.50, Cucumbers \$.50, Green Onions and More Produce Coming Soon. Kauffman Produce 11538 Iceberg Ave, LaPlata MO 63549

Let us help you with all your advertising needs. Don't know what to say? Call us we can help! 660-665-8500.

**NEMOTRADER.NET**

**660-385-5726**

29105 State Hwy. AX Macon, Mo. 63552

**Reserve your spot here!**

Call your sales representative today!

**Dutch Garden Nursery**

- Wind Chimes with Verses
- Fresh Cut Flowers
- WE DELIVER! CALL: 660-883-5650

Black Oil Sunflowers - Cardinal Nut & Berry Blend - Nyger

**PEST CONTROL SUPPLIES**  
• Mouse Baits & More

Lots of succulents Beautiful and Easy Indoors or Outdoors

Grass Seed • Cover Crop • Straw Bales

Hours: Monday - Saturday 8 AM to 5:30 PM  
MEMPHIS LOCATION (beside Country View Store): 660-883-5650  
EDINA LOCATION (Home Base): 660-397-4115  
www.dutchgardennursery.com

**Cantril LUMBER and HARDWARE**

Full Line of Building Materials • Check Out Our Metal Siding Price!  
We Sell Central States Metal • OSB • Drywall • Insulation  
• Shingles • Plyco Doors • Windows • Overhead Doors  
• All Colors of Metal Roofing and Siding • Concrete Perma Columns  
• Treated Fence Posts • Metal Gates  
See us for all your building needs

319-397-2351 • 1-888-791-9273  
Cantril, IA • Mon. - Fri. 7-5 • Sat. 7-12

**Travis Funeral Chapel**

We have served the wonderful people of LaPlata and the surrounding communities for over 30 years.

Randy & Michele Travis - Neil & Sherry Travis  
LaPlata, MO. 660-332-7145

**FARM & RANCH.**

ELIZABETH GREGORY  
660.621.2136  
farmandhome.c21.com

**CENTURY21** Lifetime Realty  
1605 Baltimore, Suite A  
Kirksville  
660.665.5678

**Oldham MONUMENT**

Monument, Markers & Vases On Display.

400 N. Kansas, Downtown Marceline, MO  
660-376-2508 • Ed & Amy Ewigman

**AW Metal LLC**  
Metal Roofing Headquarters

**BUY DIRECT**

Post Frame Building Kits  
www.awmetal.net  
**641-664-3990**

**Reserve your spot here!**

Call your sales representative today!

# NEMO

Trader

**FREE**

NEW EDITION EVERY FRIDAY!  
VOL. 29 • NO. 52 • JANUARY 28, 2022

# NEMO

Trader

**THE NEMO TRADER**

PO BOX 809 • KIRKSVILLE, MO 63501 • PHONE 660-665-8500  
Web Site: [nemotrader.net](http://nemotrader.net) • Email: [sales@nemotrader.net](mailto:sales@nemotrader.net)

A WEEKLY ADVERTISER SERVING ALL OF NORTHEAST MISSOURI AND THE SURROUNDING AREA

**ED'S MACHINERY LLC**  
QUALITY MACHINERY SINCE 1997

Have equipment to sell? Consign today!  
**Absolute Auction, No Reserve.**

Consignments accepted until Wednesday, March 9th, at 5:00 P.M.  
Print advertising deadline: February 11th, 2022

**CONSIGNMENT AUCTION**  
Live on site & Online

March 11<sup>th</sup>, 2022 @ 9:00 AM

**EXCHANGE YOUR EQUIPMENT FOR CASH!**

660-883-5501

[WWW.EDSMACHINERY.COM](http://WWW.EDSMACHINERY.COM)



17920 US Hwy 136 • Memphis, MO  
- 1 Mile West of Memphis on Hwy 136 -

*The Meeting Place For Buyers And Sellers!*

*Call Cindy!*

**660-988-6830**

chigh@nemotrader.net  
701 East Laharp Ste. C • Kirksville, Mo 63501

**NEMO** TRADER    **KIRKSVILLE Daily Express**    **The Kirksville CRIER**

**WE CAN ALSO PRINT YOUR INSERTS!**

CALL OR EMAIL FOR YOUR CUSTOM QUOTE!

**Insert Rates (11,000 pcs):**

8.5" x 11" single sheet	\$385
4-12 page tabloid	\$572

**We are a free publication serving a 20 county coverage area in Missouri, Iowa, and Illinois.**

We distribute 11,000 copies each week to convenience stores, restaurants, and other businesses for readers to pick up.

**NEW ISSUE EACH FRIDAY, ALSO AVAILABLE ONLINE AT NEMOTRADER.NET.**





**VICTORY**  
Metals & Recycling  
Kirkville, MO 660-665-8000  
victorymetalrecycling.com

For current scrap prices call or visit our **Facebook Page**

★ **Construction/ Debris Recycling**

Visit Kirkville's construction & debris recycling facility and save trips to the landfill! Take advantage of this service for solid waste removal by bringing your landfill items to Victory Metals C & D recycling facility located at 3602 N. Industrial Rd.

★ **Roll-Off Container Service**

10-20-30-40 Cubic Yard Dumpsters



**3602 N. Industrial Rd.,  
Kirkville, MO 63501  
djanessvmr@gmail.com  
www.victorymetalrecycling.com**

**Community Opportunites, Inc.**  
*Doing Our Part To Keep Our Community Clean!*



1001 S Osteopathy, Kirkville  
660-665-5768

**PLEASE RECYCLE!**

ALUMINUM CANS      PAPER      PLASTIC      CARDBOARD

**NEMO Trader Classified COUPON**

**2 Classified Ads for \$5.00**  
20 cents per word over 20 words

For an additional \$1.00 run in the Kirkville Daily Express one time.  
For and additional \$2.00 run in the Saturday Kirkville Daily Express and Kirkville Crier one time each.  
Must be Mailed in or brought in along with payment  
*Picture Ads Not Included with Coupon!*

**Choose Classification**

<input type="checkbox"/> Agri-Business	<input type="checkbox"/> Real Estate	<input type="checkbox"/> Transportation
<input type="checkbox"/> Announcements	<input type="checkbox"/> Rentals	<input type="checkbox"/> Yard Sales
<input type="checkbox"/> Employment	<input type="checkbox"/> Real Estate Sales	<input type="checkbox"/> Auctions & Estate Sales
<input type="checkbox"/> Financial	<input type="checkbox"/> Recreation	
<input type="checkbox"/> Merchandise	<input type="checkbox"/> Services	

**Ad No. 1** Each Box Represents a Word (20 words or less)


**Ad No. 2** Each Box Represents a Word (20 words or less)


Name \_\_\_\_\_

Mailing Address \_\_\_\_\_

Phone Number \* \_\_\_\_\_  
this is required\*

PO Box 809 Kirkville, MO 63501 • 660-665-8500

# Creative Outdoor Solutions

- Hardscaping
- Planting
- Trimming
- Spring Cleanup
- Fall Cleanup
- Mulching

**Need someone to do your landscaping for you?**

**Call: 660-342-7064**

for planting or hardscaping services.

**1/2 Price SALE**

on Hanging Baskets & Annual Bedding Plants, and Vegetable Plants

**Lots of Perennials, Shrubs & Trees for your landscape.**

**HUGE SELECTION!**  
Grasses, Shrubs of all kinds  
Fruit, Shade & Ornamental Trees

**10% OFF**  
House Plants & Tropicals

**WE HAVE STRAWBERRY PLANTS**  
Raspberry, Blackberry, and Grape Plants  
Gooseberry • Mulberry  
Current • Kiwi

Bulk Mushroom Compost • Bulk Mulch - All Colors  
Bulk Topsoil • Bulk Rock - Several Varieties  
**Delivery Available!**

**We have a large selection of**  
Garden Sprays, Fertilizers  
Soil Amendments • Cover Crop Seed

**DUTCH GARDEN NURSERY**  
MEMPHIS LOCATION • 660-883-5650  
(Beside Country View Store)  
EDINA LOCATION • 660-397-4115 (Home Base)  
www.dutchgardennursery.com •  
Open: Mon. - Sat. 8 AM - 6 PM

**OPEN ALL YEAR!**

*Happy 4th of July!*

# Judd Motors

Call 660-457-3700  
Hwy 63 North, Lancaster, MO

<p><b>2017 Colorado</b> crew cab, Z71, V6, 4x4, heated seats, NAV, new tires, 1 owner, only 76k miles, red, <b>only \$26,900</b></p>	<p><b>2014 Dodge Grand Caravan,</b> SXT, power seat, power sliding doors, power rear hatch, Sto-N-Go, silver, only 92k miles, <b>now only \$14,900</b></p>	<p><b>2007 Chevy Trail Blazer</b> 4.2L, 4WD, cloth, 1 OWNER, ONLY 112K, White, VERY NICE, <b>only \$8,995</b></p>
<p><b>2016 Chevy 1500, LTZ, 5.3 L, 4x4</b> <b>SOLD</b> Crew Cab, LTZ, 5.3, 117k, white, <b>\$27,900</b></p>	<p><b>2006 Chevy 1500,</b> ext cab, 4wd, V8, 132k, Sliver Birch, Very nice <b>only \$11,900</b></p>	<p><b>2006 Chevy Malibu Maxx</b> LTZ, V6, New Tires, Sunroof, heated cloth seats, ONE OWNER, 112k, white, VERY NICE. <b>\$6,995</b></p>

**www.juddmotors.com** | In Business Over 75 Years  
Curly and Kevin Judd

*Cumberland Building Dealer*

**SERVICES**

**Lawn/Garden/Landscape**

New 3 pt. tillers, heavy duty, gear driven, 7' to 12' starting at \$4,050. 660-874-4455.

Call us for all your advertising needs. 660-665-8500.

**TRANSPORTATION**

**Parts & Services**

Pro Series 15000 fifth wheel hitch, \$350.00. Call 573-209-3356.

**BE AN EARLY BIRD!** Place your ads before Monday and beat the rush!

**TRANSPORTATION**

**Parts & Services**

New/used parts vehicles, semi's, farm/construction equipment, motors/transny's, body parts paint matching yours. Warrantied/delivered. 800-807-9612.

**Trucks, 4x4's, SUV's**

2009 Chevy Silverado LT 1500 extended cab, 4x4, 5.3L, air, windows, locks, tow pkg., keyless, graystone metallic, 1 owner with no rust, only 145,000 miles, \$12,900. Accelerators since "1974" Kahoka, MO 660-727-3455 or 217-257-1385 anytime

2015 Chevy Silverado 1500, crew cab WT, 4x4, 5.3L, well equipped, windows, locks, tow, keyless brownstone metallic, 143,000 mile 1 owner, \$18,900.00 Accelerators since "1974" Kahoka, MO 217-257-1385 or 660-727-3455

**NEMOTRADER.NET**

## MUST SELL ALL MUST GO!



1999 F250 Superduty with welder tool box loaded Also garage full of tools & Drill Press

**Call 660-342-2122 or 660-216-5656**

# WE HAVE YOUR DREAM CAR!



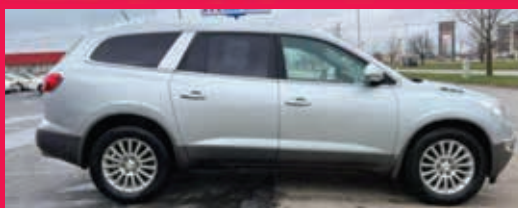
**AMERICA'S CAR-MART**  
*Keeping You on the Road*  
**car-mart.com**



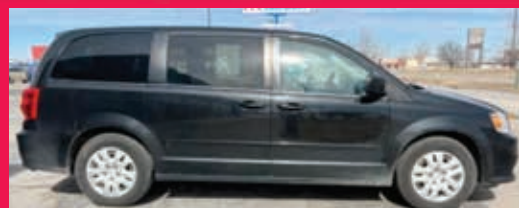
**We Offer:**

- Peace of Mind Package
- Service Contract Plus
- Accident Protection Plan
- 100% Satisfaction
- Pay Your Way
- Low Down Payments
- Quality Used Vehicles
- Flexible Financing
- Hand Selected Vehicles
- Convenient Payment Options
- Start Your Approval Online
- Over 150 Locations
- 40 Years in Business
- We Buy Cars

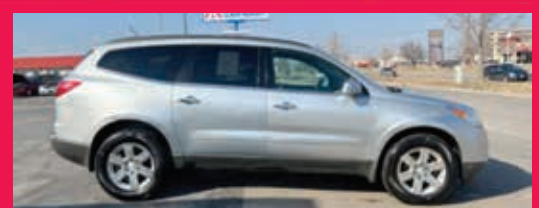
**660-956-4849 • 2015 North Baltimore • Kirksville**



**2010 BUICK ENCLAVE,**  
FWD, 6 Cyl., Silver



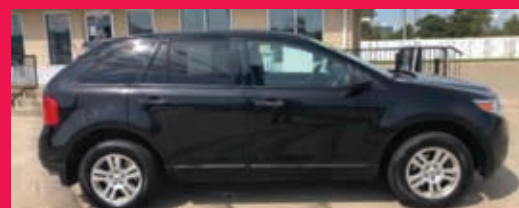
**2015 DODGE GRAND CARAVAN**  
FWD, 6 Cyl., Black



**2010 CHEVROLET TRAVERSE**  
AWD, 6 Cyl., Silver



**2012 KIA SOUL**  
FWD, 4 Cyl., Silver



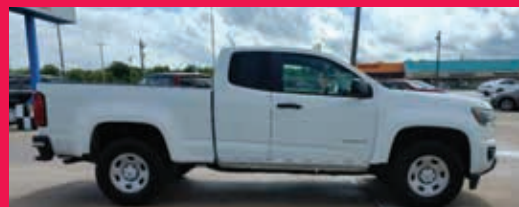
**2013 FORD EDGE**  
FWD, 6 CYL., BLACK



**2011 CHEVROLET SILVERADO 1500**  
4WD, 8 Cyl., Silver, 4 Doors



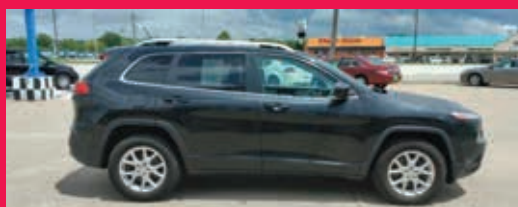
**2007 DODGE RAM 1500**  
RWD, 8 Cyl., Silver



**2019 CHEVROLET COLORADO**  
RWD, 4 Cyl., White



**2011 FORD F150**  
4WD, 8 Cyl., Black



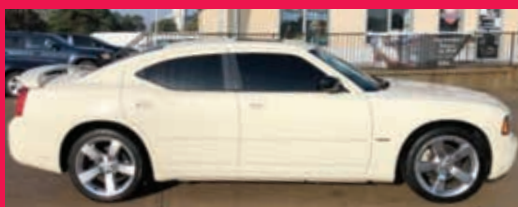
**2014 JEEP CHEROKEE**  
4WD, 4 Cyl., Black



**2017 FORD EXPLORER,**  
4WD, 6 Cyl., Silver



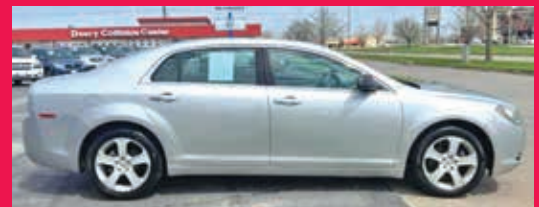
**2010 NISSAN TITAN PRO**  
4WD, 8 CYL., RED



**2010 DODGE CHARGER**  
RWD, 8 Cyl., White



**2008 CHEVROLET TAHOE**  
4WD, 8 Cyl., Blue



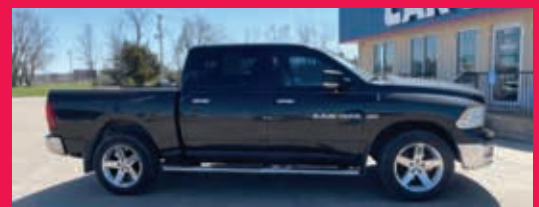
**2009 CHEVY MALIBU**  
FWD, 4 Cyl., Silver



**2008 CADILLAC SRX**  
AWD, 6 Cyl., Silver



**2010 FORD F150**  
4WD, 8 Cyl., Red.



**2011 RAM 1500**  
4WD, 8 Cyl., Black



**AMERICA'S CAR-MART**  
*Keeping You on the Road*



**KYLE JENNINGS**  
GENERAL MANAGER

# AUTO'S UNLIMITED

660-665-8149 | 660-341-0965  
No Sunday Calls! | 17406 Bob Rd • Kirksville, MO

## ★ FEATURED VEHICLES

656786z

**2007 Saturn Ion II**  
92,000 miles, 30 - 38 MPG great shape!



**\$4,900**

**2007 Ford Fusion SE**  
with 68,000 miles



**\$7,000**

**2005 Ford Escape XLT**  
front wheel drive, good condition



**\$5,700**

**Ford Ranger Edge**  
82,000 miles



**\$8,500**

ALL VEHICLES HAVE GONE THROUGH A 60 PT INSPECTION! STATE INSPECTED! CALL FOR MORE INFO!

**Automobiles**

2004 Ford Taurus SE, recently serviced, new brakes & battery, has rust, light hail, 226,000 miles same owner last 14 years, come & drive it home, \$900. Accelerators since "1974" Kahoka, MO 217-257-1385

Let us help you with all your advertising needs. Don't know what to say? Call us we can help! 660-665-8500.

**Automobiles**

2017 Kawaski Mule Pro, 1660 miles, camo top, windshield, stereo, never mudded. Excellent condition, \$15,000. 660-216-9980.

**Heavy Equipment**

New Holland LS180 skid loader, 2861 hours, open station, aux hyd, hand and foot control. Just serviced, good running machine. \$17,500.00 660-639-2111

**Auction Sales**

### Brookfield Real Estate AUCTION

ONLINE-ONLY | Bidding ends Monday, July 18th

2 Bed / 1 Bath Home - 313 Linn St, Brookfield, MO



OPEN HOUSE: July 7th from 5:00 to 7:00 pm  
Online-Only Auction: 2 Bed / 1 Bath Home in town Brookfield. Home features original hardwood floors, open living / formal dining room, & 2 large bedrooms. Mostly updated exterior with vinyl siding, metal roof, large covered front porch & newer rear wood deck. Full, unfinished walkout basement. Newer sump pump and sewer line. Central furnace & AC will need fixing or replacement. A little TLC would go a long way with this property. Perfect for a rental or an affordable starter home. One block from East Twin Park and downtown! Call Clayton Enyeart @ 660-651-3396

Terms of Auction: 10% of purchase price as Earnest Money deposit is required of winning bidder immediately following the auction. Balance due upon closing within approximately 30 days. Buyer must have financing secured prior to bidding. Bidders must be pre-qualified, registered, and vetted prior to bidding. Possession granted upon closing. Sale is subject to seller approval. Property will be sold in AS-IS condition. Cash or Pre-Qualified Conventional Financing only. Will not qualify for FHA, USDA, or VA loans. See full terms, conditions & photos on our website.

Visit [www.EnyeartAuctionRealty.com](http://www.EnyeartAuctionRealty.com) to Register & Bid!

Susan Kolander, Seller



Daniel: 660-288-3022 \* Clayton: 660-651-3396 \* Loren: 660-651-9889

## Kahler Estate AUCTION

FRIDAY, JULY 22 @ 9:00 AM  
29601 HWY 11, BROOKFIELD, MO

Due to the passing of both Mary Beth Kahler & John Kahler, the heirs and probate court have ordered to sell the following real estate & personal property at Public Auction. They have an exceptional home and a quality selection of personal property to be sold.



Real Estate: 29601 Hwy 11, Brookfield, MO. OPEN HOUSE: July 7th 5:00 pm to 7:00 pm  
Nice 3 Bed / 1.5 Bath brick ranch home on 8.45 acres just 1 mile South of Brookfield on Hwy 11. This modern home has 1,288 sq ft of main level living area w/ a full, partially finished basement. Original hardwood floors throughout, large living room, master suite w/ half bath, additional living room, bedroom, & full bathroom in the basement. 2-car attached garage w/ storage. Modern central heat & AC. Full brick exterior & vinyl windows. Nice 4548 Morton shop outbuilding & 48x92 metal barn w/ concrete shop area. Property includes a 0.37 acre pond w/ mowed lane leading to it from the house. Everything you are looking for in a rural property is right here! View our website for more info, terms, & photos.

Personal Property  
2015 Dodge Ram 1500 w/ 44k miles - 2014 Honda Civic w/ 38k miles - 2017 Nissan Altima SR w/ 27k miles, 2017 Polaris 4-Wheeler, Gravelly 2760 HD Zero Turn w/ 111 hours - John Deere D160 Lawnmower w/ 115 hours - Doolittle SS Single-Axle Trailer - Lots of NEW Shop Tools & Equipment - Lawn & Garden - Guns - Furniture & Household - Antiques & Collectibles - Jewelry - Much More Listed on Our Website!

Mary Beth & John Kahler Estates, Sellers  
Dale Linneman, Attorney



Daniel: 660-288-3022 \* Clayton: 660-651-3396 \* Loren: 660-651-9889

There's a better way to get noticed.

Keep life simple. Take out an ad.



**Automobiles**

Warranty • 319-696-2981 • Warranty • www.rsautosalesinc.com • Warranty • 319-696-2981 • Warranty • 319-696-2981

**R.S. AUTO INC.** Office (319) 696-2981  
www.rsautosalesinc.com 214 S. Center St  
Lockridge, IA 52635  
rsautoinc@yahoo.com

**319-696-2981** Check Our website for our wide Variety on  
4x4 Trucks - Cars - Mini Vans - Handicap Vans - SUV  
Motorhomes & Much More!

 83,272 Miles <b>\$6,900</b> '14 Nissan Versa Note VS 1.6L 4 Cyl, Gas, Auto, Hatchback, Cloth Interior, Extra Clean, Rust Free	 124,165 Miles <b>\$7,000</b> '14 Ford Focus Titanium 2.0L 4 Cyl, FWD, Auto, Hatchback, Camera, Leather Interior, Push Button Start, Sharp!	 91,049 Miles <b>\$12,900</b> '12 GMC Yukon XL Denali 6.2L V8, AWD, Auto, Camera, Sunroof, Leather Interior, 3rd Row, DVD Player	 98,611 Miles <b>\$12,900</b> '11 Nissan Murano S 3.5L 6 Cyl, AWD, Auto, Gas, Sunroof, Rear View Camera, Leather Interior
 125,148 Miles <b>\$12,900</b> '14 Chevy Equinox LTZ, 2.4L 4 Cyl, AWD, Auto, Sunroof, Camera, Navigation, Leather Interior, Remote Engine Start	 77,076 Miles <b>\$14,900</b> '15 GMC Terrain SLE 2 2.4L 4 Cyl, Auto, Gas, Rearview Camera, Heated Seats, Cloth Interior	 77,160 Miles <b>\$14,900</b> '13 GMC Terrain Denali 2.4L 4 Cyl, AWD, Auto, Sunroof, Leather, Rearview Camera, Park Assist Sensors	 103,148 Miles <b>\$9,900</b> '10 Jeep Liberty Ltd 3.7L 6 Cyl, 4x4, Auto, DVD Player, Navigation, Touchscreen, Sunroof, Leather
 99,460 Miles <b>\$9,900</b> '08 Hyundai Veracruz GLS 3.8L 6 Cyl, 4x4, Auto, Rear Park Assist, Leather Interior, Sunroof, 3rd Row Seating	 148,152 Miles <b>\$4,900</b> '08 Chevy Equinox LS 3.4L 6 Cyl, FWD, Auto, Gas, Pwr Windows & Locks, Normal Wear, Local Trade	 152,006 Miles <b>\$4,950</b> '04 Nissan Murano SL 3.5L 6 Cyl, AWD, Auto, Gas, Sunroof, Leather Interior, Extra Clean	 129,140 Miles <b>\$12,900</b> '06 Dodge Grand Caravan SXT 3.8L V6, FWD, Auto, Handicap Van, Pwr Fold Ramp, Cloth Interior, Local Trade
 136,495 Miles <b>\$3,900</b> '02 Dodge Grand Caravan ES 3.8L V6, FWD, Auto, Gas, Stow-N-Go, 3rd Row Seating, Leather Interior, Local Trade	 160,220 Miles <b>\$3,450</b> '07 Chrysler Town & Country Touring 3.8L 6 Cyl, Gas, Stow-N-Go Seats, 7 Passenger, Cloth Interior	 91,732 Miles <b>\$10,900</b> '16 Ford Focus SE 2.0L 4 Cyl, Auto, Gas, 4 Dr, Backup Camera, Cloth Interior	 82,066 Miles <b>\$15,900</b> '15 Toyota Prius, 1.8L 4 Cyl Hybrid Engine, Push-Button Start, Backup Camera, Sunroof, Navigation, Leather Interior
 86,148 Miles <b>\$9,900</b> '15 Nissan Sentra SR 1.8L 4 Cyl, Gas Engine, Auto, Cloth Interior, Extra Clean, Rust Free	 177,213 Miles <b>\$6,900</b> '14 Chevy Cruze LT 1.4L 4 Cyl, Gas Engine, Auto, Cloth, Sirius XM, Keyless Entry, Nice	 132,038 Miles <b>\$7,450</b> '13 Chevy Cruze LT 1.4L 4 Cyl, Gas Engine, Auto, Cloth Interior, Touchscreen, Camera	 138,031 Miles <b>\$7,900</b> '13 Chevy Impala LTZ 3.6L 6 Cyl, FWD, Auto, Sunroof, Spoiler, Leather Interior, Sharp!
 178,852 Miles <b>\$7,450</b> '12 Kia Optima LX GDI 2.4L 4 Cyl, FWD, Gas Engine, Sedan, Auto, Cloth Interior, Loaded	 105,732 Miles <b>\$12,900</b> '12 Volkswagen Jetta TDI 2.0L 4 Cyl, Auto, Diesel, 4 Dr Wagon, Sunroof, Leather	 142,074 Miles <b>\$5,450</b> '10 Dodge Caliber SXT 2.0L 4 Cyl, Auto, Gas, Black Cloth, Extra Clean	 148,272 Miles <b>\$4,450</b> '07 Dodge Caliber SXT 2.0L 4 Cyl, Auto, FWD, Gas, Station Wagon, Normal Wear
 130,871 Miles <b>\$4,450</b> '10 Chevy Cobalt LS 2.2L 4 Cyl Engine, Gas, 4 Dr Sedan, Cloth Interior, Normal Wear	 158,866 Miles <b>\$6,900</b> '08 Cadillac CTS4 3.6L V6 AWD, Auto, Sunroof, Heated/AC Leather Interior, Gas, Loaded	 149,689 Miles <b>\$6,900</b> '07 Toyota Prius 1.5L 4 Cyl, Auto, Hybrid Engine, Cloth Interior	 89,506 Miles <b>\$4,450</b> '05 Ford Five Hundred Ltd 3.0L V6, AWD, Auto, Sedan, Sunroof, Leather, Park Assist Sensors, Loaded
 198K Miles <b>\$29,900</b> '13 Toyota Hilux SR, 3.0L V6 4x4, 5 Spd Manual, Turbo Diesel, Double Cab, Leather Interior, Rust Free, Excellent Shape	 198,121 Miles <b>\$19,900</b> '06 Dodge Ram 3500 Laramie 5.9L Cummins Diesel, 2WD, Auto, Dually, Crew Cab, Leather, 5th Wheel Hitch	 129,500 Miles <b>\$16,900</b> '13 Ford F150 XLT 5.0L EcoBoost Engine, 4x4, Auto, Super Crew, Flex Fuel, Park Assist Sensors	 Local Trade <b>\$12,900</b> '08 Ford F250 SD Lariat 6.8L V10 Engine, Gas, 4x4, Auto, Crew Cab, Leather
 128,063 Miles <b>\$10,900</b> '11 GMC Canyon SLE 3.7L 5 Cyl, 4x4, Auto, Gas, Crew Cab, Cloth Interior	 159,822 Miles <b>\$15,900</b> '08 Chevy Silverado 1500, 5.3L Engine, 4x4, Auto, Ext Cab, Aluminum Flatbed w/LED Lights, Cloth Interior	 66,239 Miles <b>\$15,900</b> '05 Toyota Tundra SR5 4.7L V8, 4x4, Auto, Gas, Double Cab, Cloth Interior, Rust Free	 107,086 Miles <b>\$8,900</b> '11 Chevy Silverado 3500HD 8.1L Engine, Auto, Gas, 2 Dr Reg Cab, 5th Wheel Hitch, 19.5" Wheels, Flatbed, Dually
 180,735 Miles <b>\$3,450</b> '05 Chevy Cavalier LS 2.2L 4 Cyl Gas Engine, Auto, 2 Dr Coupe, Sunroof, Cloth Interior	 100,720 Miles <b>\$4,450</b> '00 Pontiac Sunfire GT 2.4L Engine, Auto, 2 Dr Convertible Soft Top, Cloth Interior, Excellent Shape	 348,400 Miles <b>\$12,900</b> '11 Jeep Wrangler Unltd Rubicon 3.8L, 4x4, 4 Dr Unltd, Cloth Interior, Destructive Title, Runs & Drives	 163,547 Miles <b>\$3,000</b> '06 Nissan Murano SL 3.5L 6 Cyl, AWD, Auto, Cloth Interior, Front Bumper Damage, Runs & Drives

Warranty • 319-696-2981 • Warranty • www.rsautosalesinc.com • Warranty • 319-696-2981 • Warranty • 319-696-2981

# FIND THE RIGHT RIDE FOR THE RIGHT PRICE

Find the stuff you want. Sell the stuff you don't. Save time and money with your local newspaper classifieds.



## Machinery Auction

**Thursday, July 28 \* 10a.m.**  
 Held in conjunction with the 42nd Annual Old Time Flywheel Reunion.  
**Selling Farm & Commercial Equipment:**  
 Tractors, trailers, trucks, skid loaders, construction equipment/supplies, lawn & garden, ATVs, hay & tillage equipment, livestock equipment, fencing supplies and much more.  
**CONSIGN NOW WHILE THE MARKET IS STRONG!**  
**Call the barn or Frankie at 660-651-4040**

Consignor checks printed the day of the sale. Trucking Available.

**Lolli Livestock Market, Inc.**  
**704 Main St.**  
**Macon, Mo 660-385-2516**

## LOLLI LIVESTOCK MKT, INC.

**Celebrating 75 Years!**  
**In Business**

**No Cattle Sale July 5**  
 in observance of Independence Day  
**No Cattle Sale July 12**  
 Join us for our Alternative Livestock & Taxidermy Auction July 13-15  
 July 19 - Special Calf / Yearling Sale  
 July 26 - All Class Feeder Calf - Cow, Cow/Calf & Bull Sale  
 Machinery Auction July 28 -- Consign Early!

Cafe Open **Lolli Livestock Market, Inc.** Cafe Open  
 704 Main st \* Macon, MO \* 660-385-2516 \* www.lollibro.com  
 Frankie 660-651-4040 \* Tim 660-651-3496 \* Joseph 660-346-9711  
 Jordan 660-346-0410 \* Cody 660-676-9392 Cattle accepted on Sundays

# BURKHOLDER



**2015 Chevy Silverado 2500HD LTZ Z71**  
 4x4, Crew, 6.6 Duramax, Allison, 43k One-Owner Miles, Still in Mint Cond, Must See, Charcoal

**\$63,900**

Full line of accessories **+** Outfit your truck here!

**Edina 660-397-2551 51001 State Hwy 15 BurkholderTruckSales.com**

 <b>\$47,900</b> 2020 Ford F-250 XLT, 4x4, Reg Cab Long Bed, 6.2V8, Auto, 83k One-Owner Miles, Very Well Kept, Hard to Find, White	 <b>\$49,900</b> 2020 Ford F-250 XL STX, 4x4 Crew, 6.7 Diesel, 141k One-Owner Miles, Clean Carfax, New Tires, Nice-Clean, Red	 <b>\$34,900</b> 2019 Nissan Armada SV, FWD 5.6V8, Auto, 56k Miles, Clean Carfax, Nice-Clean Ride, Come Drive, Silver	 <b>\$27,900</b> 2019 Dodge Grand Caravan GT 7 Pass, 3.6V6, Auto, 49k Miles, Stow-Go, Nice-Clean, Southern Van, Come Drive, Blk	 <b>\$48,900</b> 2019 Chevy Express 3500 LT, 6.0V8 12 Pass, Auto, 59k Mi, One-Owner, Clean Carfax, Near New, Come See, Charcoal
 <b>\$62,900</b> 2015 Chevy Silverado 2500HD LTZ Z71, 4x4, Crew, 6.6 Duramax, Allison, 42k One-Owner Miles, Southern Truck, White	 <b>\$29,900</b> 2014 Chevy Express 1500 LS 8 Pass, 5.3V8, Auto, Only 58k One-Owner Miles, Rear Heat/AC, Nice-Clean, Dk Blue	 <b>\$69,900</b> 2017 Ford F-350 XLT, 4x4, Reg Cab 6.7 Diesel, Auto, Only 43k Miles, 11' Dump Body, Was Used Very Little, Nice, Black	 <b>\$49,900</b> 2016 Chevy Silverado 3500HD WT 4x4, Double Cab, 6.0V8, Auto, 76k One-Owner Mi, Knapheide Utility Bed, White	<div style="background-color: #00a68f; color: white; padding: 10px; text-align: center;"> <b>Financing Options Available</b> </div>

## TRUCK GEAR BY LINE-X

### RETRACTABLE HARD TONNEAU COVER

- ▶ HEAVY DUTY ALUMINUM CONSTRUCTION
- ▶ SEALED BALL-BEARINGS ALLOW SMOOTH, ONE-HANDED OPERATION
- ▶ LOW PROFILE DESIGN ENHANCES TRUCK STYLE
- ▶ TEXTURED, MATTE BLACK POWDER COATED FINISH
- ▶ LOCKS IN ANY POSITION
- ▶ SUPPORTS DISTRIBUTED LOADS OF UP TO 500+ POUNDS
- ▶ NO PULL STRAPS, VELCRO, SNAPS OR SPRINGS
- ▶ LIFETIME END-TO-END WARRANTY



TRUCKGEAR.COM |

DON'T JUST PROTECT IT  
**LINE-X IT**  
 SLIP-RESISTANT SURFACE. PREVENTS RUST & CORROSION. IMPACT, ABRASION & CHEMICAL RESISTANT.

**LIFETIME WARRANTY**

**LINE-X**

### Quality Brands We Carry

# AUTO & TRUCK SALES + ACCESSORIES



# FARM MACHINERY CONSIGNMENT AUCTION

Saturday, July 16th  
@10 AM

**SCHACHTELE BARN - KEYTESVILLE, MO**

From Hwy 24 at Keytesville, take Hwy 5 North approx. 4 miles to site with a brown barn/green roof on the West side of the road, or from Hwy 36 at Marceline exit take Hwy 5 South, approx. 16 miles to site.

**TRACTORS:** JD 3020 Gas w/JD 148 Loader; IH 1086 Diesel; AC 7010; Massey Ferguson 471 Diesel w/Allied Loader; IH 674 w/Cab & Bush Hog Loader; WD 45 Wide Front w/Loader; JD M.T.; 2-JD As; JD B w/Wide Front; Kubota B1750 4-Wheel Drive w/Kubota 1640A Loader; JD 2630 w/JD Loader; JD3010 Diesel w/Bush Hog Loader; Kubota B8200 4WD; Yanmar 2210; JD 2640 w/JD148 Loader; Case 1840 Skid Steer 2430 Hrs w/Grouser tracks;

**SKID LOADER ATTACHMENTS:** New American Industries 72" Skid Loader Box Blade; 82" Stout Bucket; New 78" Grapple; Several New Skid Loader Attachments by sale time;

**TRAILERS, VEHICLES, BOAT, & UTV:** 2005 Chevy Colorado ext. cab 4x4 -Bad Motor; 2022 Heartland 20' Equipment Trailer w/7000lb axles and Stand up Ramps; 2020 28' Starlite Low Pro Flatbed w/2-7000lb Axles w/Stand up Ramps; Homemade 18' Equipment Trailer w/7000lb axles; Homemade Goose-neck Grain Trailer w/Hoist; 20' Goose neck Stock trailer; 16' Flat Bottom Fishing Boat w/Mercury 40 hp motor & Trailer; Small Boat Trailer; Tiger Bumper Hitch 4-Bale Bale Trailer; 16' Utility Trailer; Polaris Ranger 800 SidebySide; 2011 Rice 20' Flatbed Tilt Bumper Hitch 2-7000lb Axles; BushHog TH 4400 UTV; 2003 Chevy TrailBlazer; 5x10 Utility Trailer;

**FARM MACHINERY & EQUIPMENT:** IH 5100 Drill w/Grass Seed; IH 640 Manure Spreader; New Holland Pull-Type Sickle Mower; New Holland 616 Disc Mower; Pull-Type 6' Street Sweeper; 3pt 4' KingKutter XB Tiller; 3pt Ford 4' Brush Hog; Tommy 3pt Silt Plow w/Tarp Roller; Frontier GM1084 Finish Mower; JD 660 Rake; 3pt Ag-Air Mist Orchard Sprayer w/50 gall. Tank; 10' 3pt Cultivator; 3pt 500 lb Seeder; New Holland 451 Sickle Mower 7'Bar; Tri-L Pallet Forks for Loader; Danuser Digger w/18" Auger; 5' pull-type Brush Hog; 3pt IH 8' Rotary Hoe; WW Self-catching Head Chute; 6 JD Wheel Weights; Elk River 500 lb Creep Feeder; 4' Chain Hair; JD 3pt 7' Rotary Hoe; 3-Sect. Harrow; 8' 3pt Heavy Blade; 8' pull-type Disc; For-Most Squeeze Chute; 2-200lb Creep Feeder; Like New Land Pride Post Hole Digger; 3pt 8' Pasture Aerator; 3pt Bale Spike; 6' KingCutter Box Blade; 6' 3pt Brush Hog; 10' pull-type Cultipacker; 3pt 6' Blade; Case IH8465 Round Baler; JD 4Row Corn Planter; New Holland 489 Haybine; IH650 Silage Chopper; Farm Wagon 4-wheel w/Hoist; New Idea PTO Manure Spreader; JD535 Round Baler Net Wrap & Twine; JDMX7 Brush Hog; Like New Corbin Steel squeeze Chute w/Palpation Cage; New Land Pride 4' Brush Hog; 2 Rissler 2-Ton Creep Feeder w/Creep Gates; Gravity Wagon w/Auger; 3PT Sprayer 40' Boom w/200 Gal Tank & Monitor; New Holland Super 68 Square Baler; Case IH 8450 Round Baler; Bush Hog 2615 Legend Mower w/1000 PTO; Las-Tec 721XR 121 Turf Mower; JD 1207 Haybine; JD 9' pull-type Disc; Irrigation Gun on Wheels w/500' Hose; JD 8' Drop Seeder; EZEE Flow 10' Drop Seeder; 3pt JD 12' Field Cultivator; 7' Offset Disc w/18" Blades; 2 Gravity Wagons; 3pt 200lb Seeder; JD pull-type 37 Sickle Mower; Massey Ferguson 95 Loader w/Bucket; Heider Auger Wagon; 3pt Dirt Scoop; IH540 Manure Spreader w/Top Beater; 3pt Sprayer 50 gall w/7' Boom & Wand; Several 24' Freestanding Corral Panels; New 2-Ton Portable Bulk Bin; New 3-Ton Stationary Bulk Bin; Powder River Crowding Tub & Alleyway; Top Hand Cattle Alleyway; Top Hand Crowding Tub; 2Ton Galvanized Bulk Bin; Vermeer 605 XL Baler Twine & Net; IH #5 Horse Drawn Mower; Hydraulic Log Splitter w/Gas Motor; 2Bottom Plow; Vermeer WR20 8 Wheel Rake; JD 24T Baler; Little Ground Driven Manure Spreader; 3pt 6' Disc; Rhino 3pt 6' Brush Cutter; Rhino 3pt 7' Brush Cutter; JD709 Pull-type Brush Cutter; Case IH 550 Manure Spreader w/Slop Gate; Hesston 1120 Haybine; JD 5Bottom Plow; JD336 Square Twin Baler; Hesston 5585 Round Baler; New Idea Ground Driven Manure Spreader;

**LIVESTOCK , FENCING EQUIPMENT & FARM RELATED MISCELLANEOUS ITEMS:** 200-Used Steel Post; New Rolls 2x4 Welded Wire 4', 5', 6' Heights; Several New & Used Gates Various Lengths; Square Bale Hay Feeder; Concrete Water; Hanging Mineral Feeder; Plastic Water Tanks; 5- New 10' Metal Feed Troughs; 3-QLF Lick Tanks; Hedge Posts; 2-Big Exhaust Fans; L Shape Fuel Tank; Concrete Mixer; Diamond Plate Truck Tool Box; Metal Barrels; Metal Stock Racks; 2-Seat 4Wheel Horse Buggy w/Shafts; New Work Bench 10' 18 Drawer Steelman; 10' 30 Drawer Steelman Work Bench; 8 New 7' Chain Slings; Go-Cart Frame; Railroad Cart; Shop Lights; Metal Shelves; Deer Stand; 2-110gall Chemical Tanks; 3-60gall Chemical Tanks; Front Blade for lawnmower; 2 Lawn Wagons; 2 Yard Rollers; 100gall Propane Tank; Taking Consignments Daily-Expecting Much More by Sale Day

Check Schachtele Auction Facebook Page for Pictures and Other Consignments. Selling Farm Machinery, Farm Tools & Equipment & Many More Miscellaneous Items (No Household Items)

**To Consign Early for Advertising or for More Information  
Call Tony: (660) 413-3250**

**We Appreciate All Consignments!**  
TERMS: Cash-Good Check with Proper ID. We are NOT Responsible for Accidents to Man, Woman, Child or Animal! We are NOT Responsible for Lost, Stolen or Damaged Articles or Property!

Your message has  
**MUSCLE**  
In the  
**CLASSIFIEDS!**

## 2nd Annual Classic, Sporting Vehicle & Petroliana Auction

Saturday, July 9, 2022 at 10:00 a.m.

**MULTIPLE CONSIGNORS**

**Directions:** 28251 US Highway 63 North, Macon, Missouri. From US Highway 36 travel approximately 2 miles North of Macon to Scotty's Auction Barn and Event Center on the West side of the road. Watch for signs the day of the sale.

**We will be selling at auction classic automobiles, sporting vehicles and collectible petroliana items. This will be a large auction so consign early for the most advertising.**

1918 American La France; 1860 Boles Fire Co. #1; 1860 8 man pumper; 1860 hose cart; 1860 Buggy C; 1860 MS Ambulance; 1860 H2O wagon; 1860 MS Supply wagon; 1890 Hunter's Trap; 1918 A. Laf; miscellaneous parts; shop tools; parts; early firefighting equipment, all 1860 type;

**Still accepting consignments from everywhere!**

**GO TO WEBSITE FOR FULL LISTING & PHOTOS**

**SCOTTY'S AUCTION SERVICE**  
573-356-4405

Michael Cunningham 660-651-2288 • Paxton Pittman 660-346-1956  
**WWW.SCOTTSAUCTIONSERVICE.COM**

# ED'S MACHINERY LLC

QUALITY MACHINERY SINCE 1997

17920 US Hwy 136 • Memphis, MO

# CONSIGNMENT AUCTION

Live on site & Online

## HAVE EQUIPMENT TO SELL? Consign Today!



Exchange your  
Equipment for cash!



**660-538-3280**

**Absolute Auction, No Reserve!**

Consignments accepted until Tuesday, August 9th, at 5:00 P.M.  
Print advertising deadline: July 15th, 2022

**WWW.EDSMACHINERY.COM**

## Clarence Land Auction

Thursday July 7, 2022 at 5:00 p.m.

### Hutcherson Family Farms

**Directions:** State Highway KK, Clarence, Missouri. From US Highway 36, follow Highway 151 approximately 5.8 miles North to State Highway KK then follow the signs West 2.9 miles to the property. Look for signs the day of the sale.

**Real Estate:** We will be selling this 46 acres in 4 tracts. Each tract would make an excellent get-a-way, building location or crop/grazing land.

**The real estate will sell promptly at five o'clock.** If you would like to schedule your personal showing, please call Scotty at 573-356-4405. \*See Terms and Conditions for Purchase of Real Estate below.

**DOWN PAYMENT:** 10% of the contract purchase price will be due upon acceptance of the Sales Contract. Personal or Cashier's Checks will be accepted. This is "AS IS, WHERE IS" and is non-refundable. **CLOSING:** Closing shall be within 30 days of the auction date.

**GO TO WEBSITE FOR FULL LISTING & PHOTOS**

**SCOTTY'S AUCTION SERVICE**  
573-356-4405

Michael Cunningham 660-651-2288 • Paxton Pittman 660-346-1956  
**WWW.SCOTTSAUCTIONSERVICE.COM**

FIND THE  
**PERFECT PIECE**  
FOR THE  
**PERFECT PRICE**

Find the stuff you want and sell the stuff you don't  
with your local newspaper classifieds.

# SULLIVAN AUCTIONEERS, LLC

A FAMILY OWNED BUSINESS SINCE 1979



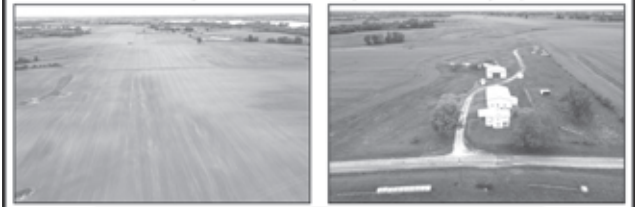
Headquartered in Hamilton, Illinois, Sullivan Auctioneers, LLC is one of the largest Real Estate and Farm Machinery Auctioneers in the nation.

For more than 40 years we have been conducting professional auctions. We connect our sellers with thousands of interested buyers around the world.

**Considering an Auction?**  
CALL OR EMAIL TODAY FOR A NO OBLIGATION CONSULTATION!  
Toll Free (844) 847-2161 | Sold@SullivanAuctioneers.com  
www.SullivanAuctioneers.com | Lic. #444000107

## VIRTUAL ONLINE Adair County, Missouri Land Auction

Wednesday, August 3, 2022 at 10:00 AM



**450 ACRES± (Subject to Survey)  
SELLING IN 7 TRACTS**

Property is located approximately 7 miles northeast of LaPlata, MO or approximately 13.5 miles southeast of Kirksville, MO in Sections 19, 24 & 25, T61N•R13W, Wilson Township, Adair County, MO.

**FARM REPRESENTS WELL-MAINTAINED HIGHLY PRODUCTIVE TILLABLE CROPLAND, IMPROVED PASTURELAND/HAY PRODUCTION, SEVERAL NICE OUTBUILDINGS AND A NICE COUNTRY HOME WITH BLACKTOP FRONTAGE.**

**Smith Irrevocable Family Trust**

Representing Attorney: David Rouner | Rouner Law Office LLC  
400 N. Franklin Street | Kirksville, MO 63501 | (660) 665-7515

Closing & Title Work: Pickell Abstract Company  
115 S. Franklin | Kirksville, MO 63501 | (660) 665-8324

Auction Managers:  
Bill Fretwell (660) 341-7735 & Jennifer Wood (217) 257-8812

**SULLIVAN AUCTIONEERS, LLC** (844) 847-2161  
Sold@SullivanAuctioneers.com  
License #444000107

# Real Estate Auction

Thursday July 14th • 5:00 PM

Selling will be 3-Bedroom home, Auto, and Contents of the Sullivan Estate

**Edward Eugene Sullivan**



314 W. Mill Street



1997 Chevy



2015 JD Mower

314 W. Mill Street, Kirksville, Mo

**\*REALESTATE, PICK UP, AND JOHN DEERE WILL SELL AT 6:00 PM**  
Viewing of Realestate by appointment Phone: 660-626-5162

**HOUSEHOLD:** Refrigerator w/ice maker (near new), Gas Range (near New), GE electric dryer, Amana auto washers, (2) Microwave, Power XL air Fryer, 5 pc wood table & (4) chairs & Buffet hutch, dropleaf dinette table, (2) Rocking Recliners, Spindle – Back Rocker, entertainment Center, pedestal fan, 2-drawer file cabinet, occasional tables, full size box & mattress set, Eureka Power Plus vacuum, new twin box & mattress set, book cases, (Near New) “Brothers JX2517 Sewing Machine, fans, Phillips stereo system, 5 drawer chest, bedding & linen, small appliances, pots, pans & dishes, small appliances, several nice western shirts & western boots, “1964” “Motors” flat rate & pats manual.

**SHOP ITEMS:** Bench grinder, extension cords, misc. hand tools, power tools, pr. Camper jacks, tow chains, yard tools, 8 pc flex socket set, 80 pc. Socket set, metal shop shelf, 30 gal comp. tank, nut & bolt asset in organizer, shop supplies, comp lanterns, small live animal trap, misc. items.

**VEHICLE:** 1997 Chevrolet Pickup (1/2 ton extended cab), some rust, 160,000 miles  
**MOWER:** 2015 John Deere Riding mower (42 inch deck, power steering, hydro, 319 hours), hydro mower lift

**Jerry McMains: Auctioneer**

Terms: Realestate 10% down day of sale. Closing 30 Days. Realestate Sell as is.

# LINN COUNTY, MISSOURI REAL ESTATE AUCTION

SATURDAY, JULY 9 • 9:00 AM

AUCTION TO BE HELD ONSITE: 21397 HWY M, BROOKFIELD, MO



**DIRECTIONS:** Due to the passing of J. Mitchel Burns, we will sell the following at the residence located 21397 Hwy M, Brookfield, MO. From Brookfield, travel north on Highway M for 7 miles to sale location. Parking located in the field north of the home. Auction signs posted sale day!

## BROOKFIELD, MISSOURI COUNTRY LIVING!

Not very often do acreages and a house like this come to the auction market! We urge you to take a look at this beautiful five bedroom, four and one-half bath country home located on 4.4 ± acres. This brick home, built in 1985, has an attached double car garage, main floor living room with fireplace, one bedroom, one and one-half baths, office, and eat-in kitchen. The second floor features the master bedroom with full bath, three additional bedrooms and a second full bathroom. The partially finished basement features a family room, with fireplace, full bath, nonconforming bedroom, and large storage area. This 2728 sq.ft. home has dual forced air heating systems (wood-gas), air conditioning, and a gas water heater. The property also features a 62'x40' pole barn shop with partial concrete and a 58'x64' pole barn with shop.

ADDITIONAL DETAILS & PHOTOS ONLINE AT:  
[www.teterauction.com](http://www.teterauction.com)

## EQUIPMENT & PERSONAL PROPERTY



**DOZER, PICKUP, GYROPLANE, FARM EQUIPMENT:** John Deere 650G LGP dozer, OROPS, 10' 6-way blade, 25" pads, 6,979 hrs., SN: T0650GW779851; 2015 Ford F-150 XLT 4wd pickup, crew cab, 5.0L V8, running boards, red, ONLY 27,683 miles! – 1 owner; 2018 Vermeer 604 Pro Gen II round baler, silage special, net wrap, 4'x6', chopping knives, gauge wheels, auto greaser, 540 PTO, monitor, 21.5-16.1SL flotation tires, 4,991 bales, SN: 1VRJ19133-JL002016; John Deere 70 2wd tractor, gas, narrow front; 1936 Allis Chalmers WC 2wd tractor, gas, narrow front, restored by Mr. Burns; Kent Mat-Truck 2500 Hay Monster, hydrostatic conveyor drive; John Deere 7000 4 row planter, markers, no-till coulters; Little Wing LW-5 Gyroplane; Rare TA Hansmann wood freight wagon, horse drawn, wood wheels, possibly nicest we have sold; Silage wagon, w/ hoist, 11L-15SL flotation tires; 2013 CGG AC Synchronous generator, 540 pto driven, 120/240v, on wheels; 1978 International Loadstar 1700 grain truck, gas, tandem axle, Knapheide 20' bed, rollover tarp, 86,891 VIN DO522HHB37499; 1993 Chevy Silverado 1500 4wd pickup, single cab, auto trans., 150,159 miles; Ford F-6 grain truck; Barge wagon; Cub Cadet RZT zero turn mower, 50" deck, 22HP, 487hrs; Box grain wagon w/ hydraulic hoist; Air Stream Land Yacht Trade Wind pull-type camper trailer, 25', (ready for restoration), SN 25T2 J5228

### GUNS, SHOP & FARM RELATED:

Sig Sauer RM 400 5.56 NATO rifle (semiauto, 16", SRP, prismatic, SN 388006579); Remington Model 742 Woodmaster rifle (30-06 cal. Sprg, Tasco 4x32 scope, SN B7095301); Western Field Model 55A pump shotgun (12ga, 2 3/4", 28" barrel, modified); Mossberg Int'l Model 702 Plinkster rifle (22cal, LR, SN EDY167127); FIE Model E15 pistol (22 cal., 6 shot, LR); Ammo (5.56cal, 20/bx, x21bxs)  
Panasonic Gunslinger 260 mig/stick welder; MagnaForce air compressor (7HP, 60gal, 230v, single stage); AutoArc 130 mig welder (115v, 30-130amp); Hobart Handler 190 wire feed welder (230v, 25-190amp); Buffalo metal cutting band saw; Central Machine 16-speed HD drill press; Oxy-acetylene torch set; Graco Magnum LTS17 airless sprayer; Rau-Immobilizer Model IM2000; MFA oil (2.5g, x6); Delta miter saw; yard tools (axes, shovels, scoops, hoes, shovels, silage fork, pitch fork, splitting maul, more); handman jack; floor jack; bottle jacks; battery chargers; torque wrench; punch-chisel set; wrench set; dremel tool; ratchet straps; hand tools (Ryobi saws-all, sanders, drills, circular saw, jigsaw, polisher, router, others); 8" bench grinder; 16" scroll saw; air tools (impacts, sander, more); Dewalt angle grinder; Dewalt palm sander; Dewalt 18v drill; digital crane scale; come-a-long; tap and die set; HD 220 ext cord; pipe wrenches; 5" bench vise; drill bits; 2-wheel dolly; organizers; manual tire changer; pipe clamps; dimensional lumber (2x4, 2x6, 2x8); chain hoist; Pelican 10' bass boat; Stihl 034AV chainsaw; Stihl MS290 chainsaw; ATV sprayer; Polaris 4-wheeler (not running); Honda Big Red 110 three wheeler; old Suzuki motorcycle; steel tubing (2x2 various lengths); Werner aluminum step ladder; shop mate; car ramps; dip net; Coleman lanterns; Craftsman garage door opener (New in box, chain drive, 1/2HP); more.  
Horse tack and related equipment (saddles x5, bridles, halters, collars, double trees, single trees, etc); horse drawn cultivator (single row, steel wheel, nice condition); garden cultivator; single bottom plow; homemade pirogue flat bottom boat (Mr. Burns raced it in M340); antique treadle grindstone; galvanized calf buckets; milk can; Happy Valley Ranch apple press; old license plates, springboard seat; wooden ext ladders; and other items scattered throughout the farm.

**FURNITURE, HOUSEHOLD, MORE:** A nice line of household items including Frigidaire chest type deep freezer; Kenmore Model AS-18 refrigerator (freezer on top, w/ ice maker); Maple settee; Rival microwave; Pyrex bowls; Correlle dish set; slow cooker; food processor; cook books; usual run of pots and pans; utensils, silverware; Haier 110v window AC; folding table; motorcycle helmets; wrought iron patio chairs; dehumidifier; walnut drop side table; Lazy-Boy recliner; swivel rocker; twin bed, complete; bentwood rocker; Exerpeutic inversion table; wine rack; wicker chairs; antique rug beaters; stone crocks (6g Blue Band, 5g, 2g, 1g, others); canners; coolers; old wooden sleds (x3); misc tables; ice cream freezer; stadium seats, camp chairs; lot of books (novels, biographies, etc); Mirrors; prints (Terry Hoyt, others); antique vanity; 6-legged parlor table; Lindell guitar; telescope; towels; bedding; hat trees; Duncan Phye lyre table; Lacrosse sofa-sleeper and matching love seat; entertainment center; binoculars, Instapot; chest of drawers; wood toy chest; wood child rockers; queen sized bed (like new, etc); Yamaha keyboard; drop front desk; triple dresser; and more items to be added by sale day!



**AUCTIONEERS NOTE:** Make plans now to attend this nice country home and farm equipment auction. Mr. Burns was a well-known and respected teacher, coach, author, six-time State and two-time National Cornhusking Champion. We will begin selling the farm equipment at 11:00 AM and sell the real estate at approximately 12 Noon. This will be a live on-site auction, additionally; internet bidding will be available prior-to and live during the auction on the larger items. Loader & operator will be available sale day to assist with load-out – please bring your trailers.

## THE J. MITCHEL BURNS ESTATE



**TETER AUCTION COMPANY, LLC**  
(660) 963-2461  
[www.TeterAuction.com](http://www.TeterAuction.com)  
AUCTIONEERS:  
Josh Teter, David May, Tyler Keenan

# LOCAL MATTERS

Please support the advertisers that power your community paper.



## PUBLIC AUCTION

We will sell the following items for Annabelle White located at **CHRISTY'S AUCTION BARN, 126 E. SANDERS, LA PLATA, MO** on

### SATURDAY, JULY 9TH, 2022 @ 10 A.M.

**HOUSEHOLD ITEMS:** Two (2) white Amana upright freezers (15 & 19 cubic ft.) – white Frigidaire automatic washer w/matching electric dryer – two (2) brown leather electric lift chairs –three (3) cushion blue hide abed divan – three (3) cushion maroon hide abed divan – maroon swivel rocker recliner – wooden dining table w/four (4) chairs & two (2) extra leaves– wooden TV stand – four (4) two (2) drawer & two (2) two (2) drawer file cabinets – three (3) wooden book shelves – microwave – several metal child's desks w/chairs – table & floor lamps – pictures & frames – several small electrical appliances – pots & pans – Tupperware – kitchen utensils – Magnavox stereo set w/large speakers – silverware – child's games, books & puzzles – walker w/brakes & seat – cookbooks – bedding & linens – lots of dishes of all kinds – & various other items too numerous to mention. **ANTIQUES & COLLECTIBLES:** – Very fancy oak sideboard w/mirror – fancy oak dresser w/mirror – oak wall hanging mirror w/hat hooks – oak stand table – large oak wooden writing desk – long oak book case w/four (4) glass doors – three (3) piece oak painted white bedroom set complete – three (3) piece waterfall bedroom set complete w/matching desk – two (2) wooden rockers – New Home sewing machine in cabinet – oak treadle sewing machine – small oak file cabinets – pictures & frames – several machine & handmade quilts – lots of fancy hand work – costume jewelry – several Zane Grey books (hard & paperback) – Norman Rockwell memorabilia – oak wall telephone – very large assortment of green & yellow depression – kerosene lamps – large assortment of blue bubble glass – glazed and unglazed marbles – large assortment of blue Fire King dishes – wheat pattern dishes – Iris & Herringbone dishes – some Fiesta Ware – candle wick glassware – service of twelve (12) Johann Haviland dishes – pressed & pattern glass – good advertising milk bottles – green oatmeal dishes – brass school bell & hanging scales – glass churn – advertising tins – sad irons – kerosene cook stove – iron wheels – barn lantern – ball glove – large well pulley – iron implement seats – three (3) child's wagons – large school bell complete – grindstone wheel – Hawthorne & JC Higgins boys' bicycles – trailer of sewing notions, material & lots of quilting pieces & various other items too numerous to mention. **ANTIQUES & COLLECTIBLE TOYS:** Old metal semi car hauler w/two (2) cars – old metal semi livestock hauler – Ford, JD, Farmall, & IH toy tractors in boxes – steam engines – IH grinder mixer – N-train sets w/some extra track & cars – Roy Rogers double holster & guns – toy washing machine & corn sheller – Davey Crockett holsters – model airplanes, cars, & trucks – paint gun helmet & shield – lots of other small toys – four (4) boxes “Green Tractor” magazines & various other items too numerous to mention. **TOOLS & SHOP ITEMS:** – Stihl FS44 straight shaft weed eater – Stihl MS250 chain saw – Stihl 56C leaf blower & bagger – 30' aluminum extension ladder – 4' & 6' fiberglass stepladders & other wooden stepladders – gasoline electric start wood chipper – bottle jacks (one is 12T) – 2 1/4T floor jack – small metal vise – double wheel grinder – two (2) portable air compressors – portable electric paint sprayer – Craftsman table model bandsaw – jack stands – JD 526 gas snowblower – garden planter – plastic & metal shelving – folding saw horses – table top lathe – log chains & boomers – garden hose & reel – DeWalt cordless drill & sawzar – pipe wrenches – air grease gun – new seventy (70) piece power bit set – battery charger – electric hand tools – new torque wrench – 1/4" & 3/8" sockets & ratchets mostly are Craftsman – open & box end wrenches – screwdrivers – drop cords – shop lights – furniture clamps – tool boxes – lots of lawn & garden tools & lots of other items too numerous to mention. **RIDING LAWNMOWERS & CAMPER HITCHES:** JD STX38 riding mower, gear driven, 38" cut – Craftsman LT1000, 42" cut, hydrostat riding mower – JD 318 riding mower (needs TLC) – Toro 6 1/2 hp. push mower – Curt 20,000# fifth wheel swivel camper pickup hitch – receiver hitch w/torsion bars. **CAR TO BE SOLD @ 12:30 P.M.:** Real nice, black, 2007 Buick Lucerne CXS, 4 door car w/leather interior, heated seats and electric windows w/88,xxx miles. **GUNS & AMMO TO BE SOLD AFTER CAR:** Near new Remington 870 express magnum, 20 ga. pump shotgun, 2 3/4 - 3" chambers w/vent rib – Mossberg model 183 KA bolt action, 410 cal. shotgun, 3" – Remington Fieldmaster model 572 pump, 22 caliber tube fed rifle – Marlin Glenfield 22 caliber, bolt action, model 80B w/scope, S.L.L.R. clip fed – Marlin Glenfield model 60, 22 caliber rifle, tube fed, automatic – New England 12 ga., single shot shotgun – antique double barrel double trigger 12 ga. shot gun – two (2) pump BB guns – Marksman BB pistol – 20 ga. & 410 ga. shells & two (2) gun cases. **AUCTIONEER'S NOTE:** Please plan to attend this very large & interesting auction.

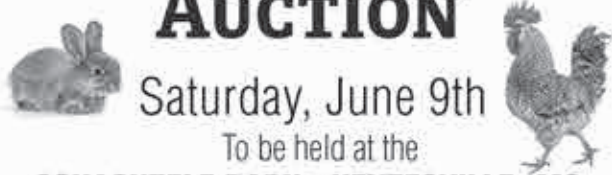
**TERMS: Cash/Check w/ID - Lunch on Grounds**

### Christy's Auction Service

La Plata, MO 63549 660-341-4531  
See Website for Photos: [www.dchristyauctions.com](http://www.dchristyauctions.com)  
& Christy's Auction Service on Facebook & AuctionZip.com  
Auctioneers – David Christy 660-341-4531  
Jason Wood – 660-341-7884 Greg Smoot – 660-341-5175



# SMALL ANIMAL AUCTION



Saturday, June 9th

To be held at the  
**SCHACHTELE BARN - KEYTESVILLE, MO**  
From Hwy 24 at Keytesville, take Hwy 5 approx 4 miles to site w/ brown barn/green roof on the West side of the road, or from Hwy 36 at Marceline exit take Hwy 5 South, approx. 16 miles to site. Follow Auction signs!

**Starting @ 11:30 am**

We will start with Misc. Items Outside & Follow with Small Animals approximately 12:00 noon. Expecting Chickens, Geese, Ducks, Turkeys, Rabbits, Goats & Many other Small Animals!

**We are NOT accepting any HOGS! All Out of state Animals to be Sold MUST Have Proper Health Papers!**

Lunch Served • Call for More Details!

**Tony Schachtele 660-413-3250**

## WE APPRECIATE ALL CONSIGNMENTS!

Terms Cash - good Check with Proper ID  
We are **NOT** Responsible for Accidents to Man, Woman, Child, or Animal. We are **NOT** Responsible for Lost, Stolen, or Damaged Articles or Property.

# Clark County REAL ESTATE AUCTION

• TUESDAY, JULY 12, 2022 AT 10 AM •

**AUCTION LOCATION: THE CARE BUILDING  
451 NORTH VINE STREET, KAHOKA, MO 63445**

PROPERTY LOCATION: From Kahoka, Missouri take Highway 136 west 9.5 miles to Luray, MO, turn right on Highway K and go north 12 miles to the farm on the right.

## 96+/- ACRES TO BE OFFERED IN TWO TRACTS LOCATED IN TOWNSHIP 67N, RANGE 9W, SECTION 19 IN CLARK COUNTY MO

THE CLARK COUNTY FSA OFFICE CALLS TO A TOTAL OF 98.63 ACRES WITH 61.14 TILLABLE ACRES.

TRACT 1: consist of 48+/- acres with frontage and access directly off Highway K which runs along the entire length of the property. Tract One has lots of cropland with the balance being in mature timber.  
TRACT 2: consist of 48+/- acres with frontage and access off Highway K which runs the entire length of the property. Tract Two is primarily open and in crop on the north end and with some mature timber on the south end.



BOTH TRACTS OFFER SOME EXCELLENT HUNTING AND RECREATIONAL OPPORTUNITIES WITH CASH INCOME FROM THE CROP LAND.

*This property has been owned by the same families since 1980 and has never been offered for public auction.*

**SELLERS: LARRY EHLMANN & RICHARD STOCKE**

Visit [wheelerauctions.com](http://wheelerauctions.com) for more information!

**Wheeler AUCTIONS & REAL ESTATE**  
For more information call  
Charlie Nordwald | (636) 795-4552  
Kirby Fecht | (217) 248-2906  
[www.wheelerauctions.com](http://www.wheelerauctions.com)

# Kirksville Real Estate & Personal Property Auction

Tuesday, July 26, 2022 at 5:00 p.m.

**Mattie and the late Eugene Horton**

Directions to auction location: 2411 North East Street, Kirksville, Missouri. From US Highway 63 at Kirksville, turn West on State Highway PP (Fairview Drive) for 1 mile then turn right onto North Lincoln Street then on to East Street to the auction location. **Look for signs the day of the sale.**

**Real Estate:** This well-maintained split foyer home in a desirable location is a must see. Built in 1991 with 1492 square feet on a 85' x 128' m/l lot, it includes 4 bedrooms, 2 1/2 baths, an attached 2 car garage and a finished basement. Main level includes 3 bedrooms, 2 full baths, living area, dining room and kitchen with a breakfast nook. Electric forced air heat and air conditioning. Rudd 50 gallon hot water heater, Carrier natural gas furnace.

The real estate will sell promptly at 6:00 p.m. If you would like to schedule your personal showing, please call Scotty at 573-356-4405.  
\*See Terms and Conditions for Purchase of Real Estate below.

**DOWN PAYMENT:** 10% of the contract purchase price will be due upon acceptance of the Sales Contract. Personal or Cashier's Checks will be accepted. This is "AS IS, WHERE IS" and is non-refundable. **CLOSING:** Closing shall be within 30 days of the auction date.

**Vehicle:** 2014 Chevy Impala Lt V6,

**Household Items:** Frigidaire washer and electric dryer; 10 hole gun cabinet; double pedestal sink; Vizio flatscreen TV; swivel rocking chair; lift chair; oversized chair with matching couch; various end tables; maple style China cabinet; walnut style 5 tier shelf; Hoover upright vacuum; McCoy 2 piece bedroom set, dresser with mirror and full size bed; Chenille bedspread; 4 piece bedroom set, full bed, dresser, chest of drawers with mirror and side table; Singer sewing machine on stand

**Antiques and Collectibles:** #2 Western crock; retro style portable bar; 3 sided oak curio cabinet; miscellaneous old marbles; carnival glass; hen on nest; ceramic eagle; various military awards; antique wooden duck decoys; retro drop leaf table and chairs; Community flatware set and case; various figurines; Ingraham 8 day mantle clock; Cavalier cedar chest; 3 piece vintage bedroom set, full bed, chest of drawers and dresser with mirror; miscellaneous antique golf clubs

**Outdoor Equipment and Tools:** Tradesman 6 inch 1/2 horse bench grinder; small advertising anvil; various hand tools and tool boxes; long handled tools; camping supplies and gear; 4x4 signs

*There will be many more items at this auction too numerous to mention.*

**SCOTTY'S AUCTION SERVICE**  
573-356-4405  
Michael Cunningham 660-651-2288 • Paxton Pittman 660-346-1956  
[WWW.SCOTTSAUCTIONSERVICE.COM](http://WWW.SCOTTSAUCTIONSERVICE.COM)

# Macon Real Estate & Antique Auction

Saturday, July 23, 2022 at 10:00 a.m.

**Richard and Dorothy Crow**

Directions to auction location: 210 Butler Street, Macon, Missouri. From US Highway 63 in Macon, follow Vine Street West for 0.2 miles, turn North on Rutherford Street for 0.1 miles to East on Butler Street.

**Real Estate:** This well-maintained two story home has been a show case for many years. The home has 1 bedroom on the main level, 4 bedrooms on the second level and 2 full baths. There are hardwood floors and original woodwork throughout the home to add to its charm. The central air is approximately 3 years old and the home is heated with a gas furnace. The property also has a 17' x 20' metal shed with concrete floor and overhead door and a 20' x 34' metal shed with concrete floor and electricity.

**DOWN PAYMENT:** 10% of the contract purchase price will be due upon acceptance of the Sales Contract. Personal or Cashier's Checks will be accepted. This is "AS IS, WHERE IS" and is non-refundable. **CLOSING:** Closing shall be within 30 days of the auction date.

The real estate will sell promptly at noon. To schedule your personal showing, please contact Scotty at 573-356-4405.

**Vehicles:** 1988 Chevy Silverado V8, 4x4, half ton, 130,000 miles, motor rebuilt approximately 10,000 miles ago, nice truck; 1928 Delux Oldsmobile sedan, straight six engine, needs throw out bearing, good interior, new tires, good spikes, solid car

**Tools:** Porter Cable band saw; Ridgid belt sander; Liberty metal chop saw; Black & Decker router; Craftsman disc sander; Tradesman 6" bench grinder; Tradesman bench top drill press; Magna Force air compressor; 110 V Craftsman tool box; Craftsman 10 inch table saw; wood lathe; sandblaster cabinet; miscellaneous hand tools

**Antiques:** Brachs Candyland light; Mobil gas glove on wood homemade gas tank; Imperial gas can; 107 church pew; Pepsi Cola clock; concrete horses; concrete deer; concrete jockey; well pump; C.O. Jones show saddle; buffalo mount; caribou mount; Mobil gas special handmade pump; LOTS MORE

**Household Furnishings:** Tables; chairs; glider rocker; various lamps; martin house; cedar martin house; maple china hutch; oak claw footed round table; chest of drawers; dressers; full bed

*There will be many more items at this auction too numerous to mention.*

**SCOTTY'S AUCTION SERVICE**  
573-356-4405  
Michael Cunningham 660-651-2288 • Paxton Pittman 660-346-1956  
[WWW.SCOTTSAUCTIONSERVICE.COM](http://WWW.SCOTTSAUCTIONSERVICE.COM)

# PERSONAL PROPERTY AUCTION FOR MARGARET "MAGGIE" ALLEN

Saturday, July 9th, 2022 AT 10AM

109 South East Ave. • Edina, MO

Equipment • Winchester Gun Safe • Antiques • Furniture  
Household • Jewelry • Lawn & Garden  
MANY MORE NICE CLEAN ITEMS.....



More pictures and information at:  
[www.hammondwatsonauctionservice.com](http://www.hammondwatsonauctionservice.com)

**Hammond & Watson AUCTION SERVICE**  
Lionel Hammond & Kirk Watson  
573-406-3877  
PALMYRA MO

WE'VE GOT YOUR DREAM JOB ON A **SILVER PLATTER**  
Keep up-to-date with dozens of job postings throughout your local area.  
Find the perfect permanent or temporary position in the classifieds!

# Rustemeyer Family Trust - AUCTION -

37800 HWY PP - SALISBURY, MO  
TUESDAY, JULY 26, 2022 @ 3 PM



**REAL ESTATE:** (3 PM) Rare opportunity to purchase small acreage only 1 mile from town on black top Hwy - 37 Acres m/l of rolling pasture ground - Western and part of the northern boundary adjoins the middle fork creek - Property is fenced and has older hay/Livestock barn - Bluff overlooks the old river that meanders through the property - Excellent place to build your dream home with great hunting and fishing right out your back door! Real Estate Terms: 10% down auction day with balance due and possession given at closing (45 days) - Property sells as is where is with no contingencies and with trustee's confirmation \* YOU ARE WELCOME TO WALK THE PROPERTY, BUT BE ADVISED CATTLE ARE PRESENT. If you would like to view the property otherwise, please call 660-388-6235

**RUSTEMEYER FAMILY TRUST**  
Mildred Schachtele & Marge Fuemmeler Trustees  
**IMAN AUCTION COMPANY**  
MORE INFO @ [IMANAUCTION.COM](http://IMANAUCTION.COM) | 660-388-6235

FIND THE PERFECT PET FOR THE PERFECT PRICE IN THE PERFECT PLACE FOR DEALS  
Find the stuff you want and sell the stuff you don't in the newspaper classifieds.

There's a better way to get noticed.  
Keep life simple. Take out an ad.

# Commercial Real Estate & Business Equipment Auction;

Friday, July 15, 2022 at 10:00 a.m.

**McAlister & Son Inc.**

Directions: 1087 County Road 1745, Cairo, Missouri. Located approximately 2.3 miles North of Cairo, just East of US Highway 63. Look for signs the day of the auction.

**Real Estate:** With a great location in a highly trafficked area, this 1207 x 807 commercial building constructed in 2004 on 9 acres +/- offers a 207 x 607 office space with a/c and heat and overhead storage. The building is fully insulated with oil heat, 3 bathrooms, 1 shower, 3 offices and a break room. There are floor drains in the shop area, 10" concrete with steel floor, a 5 ton 360 degree crane hoist. 16x16 (4) electric overhead doors, a 50' x80' concrete approach, .208 -3 phase, LED lighting, 34' ceiling height, 27' side walls, with all clear open span and security system The attached 40' x 50' has 2 electric 10' x 12' insulated overhead doors, is spray foam insulated, has electric, steel welded clear span, 10" thick concrete floors and a 2 way intercom. There is also a 40' x 100' metal storage building with 2 drive through overhead doors.

The real estate will sell promptly at noon. If you would like to schedule your personal showing, please call Scotty at 573-356-4405.  
\*See Terms and Conditions for Purchase of Real Estate below.

**DOWN PAYMENT:** 10% of the contract purchase price will be due upon acceptance of the Sales Contract. Personal or Cashier's Checks will be accepted. This is "AS IS, WHERE IS" and is non-refundable. **CLOSING:** Closing shall be within 30 days of the auction date.

**Business Equipment:** Coll-O-Crimp brand Hydraulic hose machine with hoses, fittings and cutoff saw; heavy duty metal tables with parts drawers; O-ring kits; 14 boll bins with bolts, fine and coarse threaded; all thread and cabinets; pack and seal kits with bins and cabinet; wooden parts cabinet; metal bander with tools; digital postal scale up to 300 pounds; 5 metal welding tables; roll-around walk up ladder; Cushman cart; large assortment of shelving; new and used steel; large quantity of scrap iron; large storage bed; bottom roller; sprocket; overhead Robins & Myers hoist, barrels; crane booms; 36" pads for 500 series American fillers; belt spindles; parts drawers; seals; gaskets; hydraulic hoses; lots of parts; 3 shank hydraulic ripper D6C, D7C, DGD; popcorn popper; ratchets; crescent wrenches; Snap On wrenches; sockets; crow bars; Allen wrenches; files; screwdrivers; wrenches; large wrenches; bench grinder; chainsaws; 2 parts washers; several log chains and chain binders; large lot of larger sockets (Williams, Mac) parts manuals; safe metal cabinets; plastic cabinets; come alongs; oil tubes; metal shelves; shop booms; 3 roll around trays; several large drill bits; Craftsman lathe (no tooling); large shop press; brake rivet machine(Star); Millermatic 300; GBC hot water washer; battery charger; oxygen and acetylene storage system; drill press; Balderlage grinder, left & right hand D76; track frames with recoil springs and idler.

**Tractor and Vehicle Parts and Equipment:** Cummins motor; crank shaft; pulleys; alternators; Allis Chalmers gears; small V motor; muffler; fuel injection pumps; radiators; gears; miscellaneous new and used final drives; Evator; front idlers; lift cylinders; Cat transmission; Aluminum headache rack for semi truck; aluminum semi toolboxes; skid loader brush cutter, needs motor; semi box trailer storage; dozer draw bar; Yale 6,000 pound propane forklift; D76 open Rops canopy with sweeps and yard drag bucket; Alum Sheen 287 end dump, tandem axle trailer; Kamatir grapple PC200 concrete crusher in excellent condition.

There will be many more items at this auction too numerous to mention.

GO TO WEBSITE FOR FULL LISTING & PHOTOS  
**SCOTTY'S AUCTION SERVICE**  
573-356-4405  
Michael Cunningham 660-651-2288 • Paxton Pittman 660-346-1956  
[WWW.SCOTTSAUCTIONSERVICE.COM](http://WWW.SCOTTSAUCTIONSERVICE.COM)



**McAfee Auction Service, LLC**  
375 S Johnson • Kahoka, MO  
660-727-3796  
www.mcafeeauctionservice.com

## UPCOMING LAND & REAL ESTATE AUCTIONS

### CLARK COUNTY LAND AUCTION

**242.5 +/- Acres**  
3 TRACTS

LIVE ONSITE ONLY AUCTION  
**THUR, JULY 14<sup>TH</sup> - 6 PM**  
CROPLAND - GRASSLAND - HUNTING  
SALE CONDUCTED AT THE CARE BUILDING  
(451 N. VINE ST. KAHOKA MO)

**NANCY AND THE LATE JACK EDLEN, SELLER**

### ADAIR COUNTY LAND AUCTION

**140 +/- Acres**  
2 TRACTS

LIVE ONSITE ONLY AUCTION  
**TUES, JULY 26<sup>TH</sup> - 6 PM**  
GRASSLAND - BUILDING SITES  
SALE CONDUCTED AT THE DAYS INN  
(3805 S. BALTIMORE ST, KIRKSVILLE MO)

**THE FAMILY OF HOWARD & BETTY HUGHES, SELLERS**

### SCOTLAND CO REAL ESTATE AUCTION

**3 BEDROOM  
2 BATH HOME  
BUILT IN 1997  
WELL CARED FOR**

LIVE ONSITE ONLY AUCTION  
**TUES, AUG 2<sup>ND</sup> - 6 PM**  
SALE CONDUCTED ONSITE LOCATED AT  
426 W. ELM ST. MEMPHIS, MO



**OPEN HOUSE  
FRI, JULY 22<sup>ND</sup>  
5:30-6:30 PM**

**THE FAMILY OF  
LONNIE AND REVA TRIPLETT, SELLERS**

### CLARK COUNTY LAND AUCTION

**152 +/- Acres**  
2 TRACTS

LIVE ONSITE ONLY AUCTION  
**THUR, AUG 11<sup>TH</sup> - 6 PM**  
CROPLAND - WOODLANDS  
CRP INCOME - BUILDING SITES  
SALE CONDUCTED AT THE CARE BUILDING  
(451 N. VINE ST. KAHOKA MO)

**KENNETH "GALE" ELLIOTT ESTATE**

### CLARK COUNTY LAND AUCTION

**74 +/- Acres**  
1 TRACT

LIVE ONSITE ONLY AUCTION  
**THUR, AUG 11<sup>TH</sup> - 7 PM**  
OPEN TILLABLE LAND  
CRP INCOME - HUNTING  
SALE CONDUCTED AT THE CARE BUILDING  
(451 N. VINE ST. KAHOKA MO)

**MARK E. AND CANDICE J. HUMES TRUST**

**COMPLETE DETAILS ONLINE  
WWW.MCAFEEAUCTIONSERVICE.COM**

ADDITIONAL  
DETAILS, PHOTOS  
& AUCTIONS ONLINE!

**THINKING OF SELLING  
LAND OR MACHINERY?**

**LET OUR MOTIVATED  
STAFF WORK  
FOR YOU!**

**MONTY: 660-341-7412**

**OFFICE: 660-727-3796**



**McAfee Auction Service, LLC**  
375 S Johnson • Kahoka, MO  
660-727-3796  
www.mcafeeauctionservice.com

## UPCOMING TIMED ONLINE ONLY MACHINERY AUCTIONS

**THURSDAY, JULY 14<sup>TH</sup>**

**LOTS START ENDING AT 10 AM**



2006 JD 4WD Cab Tractor with loader, 3402 hrs.; 2014 Chevy 1500 LT Z71 4dr., 4WD pickup, only 37,000 miles; Hay Equipment; Tillage Equipment; AC D17 Tractor; Salvage Equipment; Farm and Shop Related; Also selling 2015 F150, Only 45,778 miles; 2014 Taurus, Only 91,536 Miles consigned by the Triplett Estate.

**JD 6420, 2014 CHEVY TRUCK, 2015 F150 & 2014 TAURUS ARE LOCATED AT 375 S. JOHNSON, KAHOKA & CAN BE PREVIEWED DURING BUSINESS HOURS. ALL OTHER ITEMS CAN BE PREVIEWED AT 18569 CO RD 74, KAHOKA ON FRI JULY 8<sup>TH</sup> 9 AM TO 1 PM**

**NANCY AND THE LATE JACK EDLEN, SELLER**

**FRIDAY, JULY 22<sup>ND</sup>**

**LOTS START ENDING AT 10 AM**



JD 4955 4WD Tractor, JD 7810 2WD tractor, Steiger ST250 Cougar Tractor, Grain Truck, Grain Carts, Seed Tender, Tillage Equip., AG Systems 6400 Liquid Fertilizer Applicator, Big Dog 5 yrd Dirt Scraper etc.

**LOCATION: JUST NORTH OF WYACONDA, MO ON RTE A  
PREVIEW: SAT JULY 16<sup>TH</sup> UNTIL SALE DAY**

**LARRY & LYNN ALDERTON, SELLERS**

**THURSDAY, AUGUST 11<sup>TH</sup>**

**LOTS START ENDING AT 10 AM**



Selling semi, truck, trailers, airplane, motorcycle, backhoe, crawler, tractor and nice variety of shop related items.

**KENNETH "GALE" ELLIOTT ESTATE**

**COMPLETE DETAILS ONLINE  
WWW.MCAFEEAUCTIONSERVICE.COM**



**McAfee Auction Service, LLC**  
375 S Johnson • Kahoka, MO  
660-727-3796  
www.mcafeeauctionservice.com

## MOVING & COMMUNITY AMISH AUCTION

**FRIDAY, JULY 29<sup>TH</sup> - 10 AM**

**SALE CONDUCTED AT 22153 CO RD 174, KAHOKA, MO**



As the Eichers have sold their farm and are relocating, they along with other Amish from the community will sell a variety of items to include: Power Unit, Horse Drawn Equipment, Tools, Wood Working Equipment, Lawn Equipment, Building Materials, Farm Support Items and Much More!

**JACOB & IRENE EICHER & OTHERS**