

FREE

NEW EDITION EVERY FRIDAY!
VOL. 29 • NO. 80 • AUGUST 05, 2022

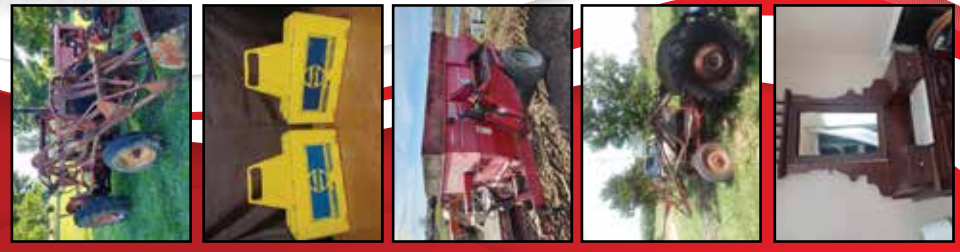
NEMO Trader

THE NEMO TRADER

PO BOX 809 • KIRKSVILLE, MO 63501 • PHONE 660-665-8500

Web Site: nemotrader.net • Email: sales@nemotrader.net

A WEEKLY ADVERTISER SERVING ALL OF NORTHEAST MISSOURI AND THE SURROUNDING AREA



AUGUST CONSIGNMENT SALE

Saturday August 6th @ 11:30 am

LOCATION: 9471 HWY 36 HUNNEWELL, MO

THIS SALE CONSIST OF AN ESTATE, LOTS OF ANTIQUES, TOOLS GALORE, FURNITURE, TIRES & WHEELS, FIREWOOD, BARN WOOD & TIN, CONCRETE BLOCKS, SCRAP METAL PILE, LAWN & EQUIPMENT TRAILERS, LAWN MOWERS, DR. TRIMMER MOWERS, HOUSEHOLD STUFF, ITS TOO MUCH TO LIST NICE NICE STUFF....



2017 Chrysler Pacifica
90K miles, fully loaded, NICE VAN



1979 International 1586
new clutch, pressure plate,

LARGE ITEMS SALE AT 1:30 PM * MORE NOT PICTURED

• Lots of farm equipment • Estate household furniture • Tools

There will be many more items too numerous to mention

Shuckie's Auction & Appraisal Services of Hunnewell, Mo

"We holler for your dollar"

Col. Ray Delaporte Associate Auctioneer

(573)-406-3783 / (573)-731-3300

Col. Bryan Shuck Auctioneer

573)-822-3170 / (573)-731-3300



Reserve your spot here!

Call your sales representative today!

Dutch Garden Nursery

- Wind Chimes with Verses
- Fresh Cut Flowers
- WE DELIVER! CALL: 660-883-5650

Black Oil Sunflowers - Cardinal Nut & Berry Blend - Nyger

BIRO SEED

- Pest Control Supplies
- Mouse Baits & More
- Lots of succulents Beautiful and Easy Indoors or Outdoors
- Grass Seed • Cover Crop • Straw Bales

Hours: Monday - Saturday 8 AM to 5:30 PM
MEMPHIS LOCATION (beside Country View Store): 660-883-5650
EDINA LOCATION (Home Base): 660-397-4115
www.dutchgardennursery.com

Cantril LUMBER and HARDWARE

Full Line of Building Materials • Check Out Our Metal Siding Price!
We Sell Central States Metal • OSB • Drywall • Insulation
• Shingles • Plyco Doors • Windows • Overhead Doors
• All Colors of Metal Roofing and Siding • Concrete Perma Columns
• Treated Fence Posts • Metal Gates
See us for all your building needs

319-397-2351 • 1-888-791-9273
Cantril, IA • Mon. - Fri. 7-5 • Sat. 7-12

Travis Funeral Chapel

We have served the wonderful people of LaPlata and the surrounding communities for over 30 years.

Randy & Michele Travis -
Neil & Sherry Travis
LaPlata, MO. 660-332-7145

21 FARM & RANCH.

ELIZABETH GREGORY
660.621.2136
farmandhome.c21.com

CENTURY21 1605 Baltimore, Suite A
Lifetime Realty Kirksville 660.665.5678

Oldham MONUMENT

Monument, Markers & Vases On Display.

400 N. Kansas, Downtown Marceline, MO
660-376-2508 • Ed & Amy Ewigman

AW Metal LLC

Metal Roofing Headquarters

BUY DIRECT

Post Frame Building Kits
www.awmetal.net
641-664-3990

Reserve your spot here!

Call your sales representative today!

Kirksville, Missouri
KIRKSVILLE LIVESTOCK LLC

24295 Benton Road * P O Box 242 * Kirksville, MO 63501

www.kirksvillivelivestock.com

Special Bred Cow and Breeding Bull Sale
Monday, August 8, 2022 • 11:00 a.m.

Mike Stiles - 64 mixed str, 850-875#

Mike Stiles - 67 mixed hfrs, 800-825#

Riley Raines - 70 BBWF str, 2nd round shots, 725-775#

Josh Hall - 35 Red str & hfrs, 2nd round shots, LTW, 585-685#

Randy Whitlow - 22 Blk hfrs, 2nd round shots, LTW, 650-725#

C J Michaels - 17 Blk str & hfrs, 1 round shots, LTW, 600#

More listings by sale day • Check website for updated listings: www.kirksvillivelivestock.com



We are open on Sunday to Receive Your Livestock
"Your Business is Very Much Appreciated"
"Proud to Serve Area Livestock Producers"
For more information or Someone to
Look at your Livestock Phone:

Patty Foster, Office Manager - 660-665-9804

Chuck Ambrosia - 660-342-3530 Luke West 620-215-5770

Mark Herbold - 515-720-8667 - Al Ashmead - 660-216-8730

Jeremy Jarman - 660-341-9879 - Daniel Smith - 660-341-8396

Caleb Randolph - 641-919-8539

660388jn

**WE GOT YOUR
NEEDS COVERED!**



**FARM TARPS TRUCK TARPS
HOOP BUILDING COVERS**

Troyer
TARP MFG.

660-486-3301

20264 STATE HWY. VV • ETHEL, MO 63539

631236

**Adair County Ag
& Lawn LLC.**

7 miles east of Greentop, MO



John Deere 4450,
MFWD, 15 PS, PWR Shift w/
self leveling loader, Like New
Tires, New Paint, New
Interior, 3 Remotes, 8439 hrs
\$54,500

**Cell: 660-341-6267
Shop: 660-397-9970**

Equipment & Supplies

Brand new 2022 Carry-on
76" x 12' treated lumber
utility trailer with ramp
gates. ST205/75 D-15 tires,
storage box, 2" coupler,
\$2300.00. Accelerators
since "1974", Kahoka, MO,
call anytime. 217-257-1385.

AC 7' pull type rotary
brush cutter with cylinder,
\$750; John Deere 48" mow-
er deck from Lx188 fits
other models, \$125.
217-257-1385

Bush hog 3210, 10' semi
mount big gear boxes,
laminated tires, 540 pto,
hydraulic adjust, low acres
used, \$5900. 217-257-1385

Bush hog FTH 720, 6' finish
mower, 3 point, 540 PTO,
always shedded, good
paint, \$1050.00.
217-257-1385.

Farmall 560 gas, Schwartz
wide front, good 15.5x38's,
fast hitch, fenders, owned
for 19 years uses no oil,
\$2,400. 217-257-1385

NEMOTRADER.NET

Equipment & Supplies

2017 Carry-on 76"x8' treat-
ed lumber utility trailer
with tall ramp gate Carlisle
8 plys, 2" coupler used
very little, shedded, with
title, like new, \$1,200.00
217-257-1385

100 Gallon fuel tank man-
ual hand pump with filter,
\$375; IHC 5 1/2' pull type
rotary mower, cylinder 540
PTO, \$425. 217-257-1385

Morris built 3 pt. bale
spear, \$275; Freeland 100
gallon poly-tuf plastic
stock tank, \$50 also larger
ones. 217-257-1385

5' Brush Cutter, pull type,
540 PTO, new U joints &
hydraulic cylinders and
hoses, \$375; old window
wts make great anchors,
\$2 each. 217-257-1385

FOR SALE
AI Sired Angus Bulls,
14 & 18 Months Old.
Harold Trump
660-341-5730

Cattle

Charolais Heifers, various
sizes, very gentle. Glas-
gow, MO. Bob Frost
660-338-2301

Equipment & Supplies

Allis Chalmers D14, narrow
front, very straight, origi-
nal, non running from set-
ting, \$1250. 217-257-1385

Let us help you with all your
advertising needs. Don't
know what to say? Call us we
can help! **660-665-8500.**



GRAIN VAC
VRX

All aspects of AGI GrainVacs are examined,
questioned and extreme tested individually and
as part of the whole system, not just in controlled
environments, but in the field as well. By utilizing
VR Technology, AGI is able to get more capacity
and longevity while reducing noise, debris and
maintenance time. AGI GrainVacs set all new
standards in efficiency, speed and durability.

For more information about AGI GrainVacs,
visit aggrowth.com/grainvacs

aggrowth.com



NEW

- NEW REM VRX GRAIN VAC
- BROOKFIELD | REM VRX | 2022 GRAIN VAC
- HAVANA | REM VRX | 2022 GRAIN VAC
- QUINCY | REM VRX | 2022 GRAIN VAC

USED GRAIN CARTS

- HANNIBAL | KINZE 840 | 1997, TARP, TIRES, ELECTRIC SCALES..... \$22,500
- HANNIBAL | KINZE 840 | 2002, 30.5L-32 FIRESTONE TIRES, ROLL TARP, ADJUSTABLE SPOUT \$17,500
- BROOKFIELD | KILLBROS 1400 | NEW VERTICAL AUGERS LAST YEAR, 30.5L-32 DIAMOND TREAD, ROLL TARP \$9,000
- BROOKFIELD | KILLBROS 490 \$6,500
- BOWLING GREEN | FICKLIN CA15000 | 750 BUSHEL \$11,500
- Hannibal | Brent 420 \$6,900
- Quincy | Demco 750 | Roll tarp \$18,500

USED DRAPER HEADS

- HANNIBAL | MACDON FD75-40 | 2013, NEW BELTS, GUARDS & SECTIONS..... \$50,000
- QUINCY | MACDON FD135 | 2019, JDS, 35' \$79,500
- QUINCY | MACDON FD75-35 | 2015, ALL NEW GUARDS FALL 2021, YELLOW END SHIELDS..... \$64,000
- Brookfield | MacDon FD75-35 | 2015, 6PT Shaft, Case IH adapter, Red side shields..... \$61,000
- Hannibal | MacDon FD75-30 | 2015, CNH Hookup, Only one year used \$59,000
- Havana | Honeybee AF225 | 2016, 25', New belts, Flip over reel, Center drive sickle CALL
- Brookfield | MacDon FD70-40 | 2012, 40', Lexion adapter \$42,000



Hannibal: 573-221-8212 • Bowling Green: 573-324-3337 • Quincy: 217-222-1392
Brookfield: 660-258-7228 • Havana: 309-543-2221
WWW.QUINCYTRACTORLLC.COM

659887jn

BIN PACKAGES ON HAND **READY TO SHIP**



Sukup

48X9 55,000 BUSHELS (1 LEFT)
48X12 70,000 BUSHELS (2 LEFT)

GRAIN BINS SUPPLY **CAIRO, MO**
 "The Grain Bin People" **GBS (660) 263-6700**

AGRI-BUSINESS

Equipment & Supplies

Vermeer 505 Super I hay baler, field ready, \$6000. 660-341-4982

Call about our classified ad specials. 660-665-8500.

Equipment & Supplies

2013 Easy Trail Grain Cart, green in color, tarp, working lights, excellent shape, \$13,700. 217-242-8214

BE AN EARLY BIRD! Place your ads before Monday and beat the rush!

BUCKMAN MACHINERY, LLC
573-881-3557

John Deere 3950 Silage Chopper, used this year, very good condition, a green 2 row 30" corn head, low acres, 5.5' pick-up header,..... **\$9,500**

John Deere 4430, QR, 65% rubber, 6500 hrs showing, dual hydr, 6 out of 10..... **\$14,950**

John Deere 3020 D, 1968, powershift, 9000 hrs, very straight, 90% rubber..... **\$12,500**

John Deere 3020 Gas, powershift, 90% big rubber, dual hydr, 4100 hrs, one owner, really nice..... **\$9,500**

IHC 484 Utility Diesel, 90% rubber, 4400 hrs and Freeman Loader,..... **\$6,750**

John Deere 5075 E, MFWD, CAH, with JD H240 SL Loader, 940 hrs, new engine, same as new,..... **\$39,500**

John Deere 1008 Brush Hog, 3 pt, 10', 540 PTO, good..... **\$4,750**

John Deere 709 or 609 Brush Hogs, 3 pt, 540 PTO, Cat II, choice,..... **\$1,750**

Loaders & Duals available for many

Your Local
FARM SUPPLY SOURCE
 NUTRITION • MEDICAL • FARM • PET • APPAREL

Featured Product



10' BUNK FEEDERS
\$15 OFF
 THIS MONTH

Hometown Animal Health has provided quality products, expert knowledge, and friendly customer service to northeast Missouri and surrounding areas. We are a full-service nutrition, medical, and farm supply source carrying complete lines of animal feed and supplies, farming equipment, agricultural parts, lawn and garden tools, work apparel, and much more!"

Hometown ANIMAL HEALTH
 Feed • Medical • Farm & Pet Supplies • Footwear & More
 website: hometownanimalhealth.com
660-465-2967
 18743 US Hwy, 136 Memphis, MO 63555
 "on Hwy 136 west of Memphis"
 Monday-Friday 8pm to 5pm
 Saturday 8am to 1pm

Buckman Machinery



Woods 3180 Batwing, 15', 1000 PTO, laminated tires, chains, field ready **\$12,500**



John Deere 5603, 2008, MFWD & 542 Loader, reverser, dual hydr, joystick, 2035 hrs. **\$49,500**



MF 235 Diesel, 3000 hrs, restored, new rubber, hydrvalve, sharp looking, **\$5,750**



John Deere 4430, Northern Illinois one owner, 76320 hrs, dual hydr, ft. wts, rear wts, front auxiliary tank, very nice as you can find. **\$30,500**



John Deere 4020, 1966, powershift, 85% rubber, with JD 158 Loader, QT bucket & bale spear, one owner, 9017 hrs, **\$18,500**



Bush Hog 12715 Legend, bat wings, 1000 PTO, 4 yrs old, in the field now, **\$13,500**

573-881-3557

Equipment & Supplies

Farmall 656, gas, factory wide front, flat tops, good TA, fast hitch, 16.9x38, very straight and original, 4900 hours, with hydraulic bucket loader, \$6900. 217-257-1385

Farmall M, Schwartz wide front, 15.5x38 Armstrong, lots of tread, good rims, O.D. transmission, has live hydraulics, stored inside, non running, \$1400. 217-257-1385

NEMOTRADER.NET

John Deere 4720 tractor, MFD, 58 hp, hydrostat, cab/AC, 400CX loader, air seat, rear remotes, only 960 hrs, only **\$42,500**
660-457-3700 • Judd Motors

BWS Brad's Welding Shop
 12673 Almond Ave. Marceline, MO 64658
660-376-1158

- Hay Liner Trailers
- Red line Harrows
- Continuous Panels
- Bale Feeders
- Arrowquip Cattle Equipment

bradsweldingshop.com

Animal Housing, Hay Storage & Much More!!



Skylight Fabric Structures
 20749 State Highway VV
 Ethel, MO 63539
660-486-3250
833-482-8862

Golden Grain Bins-Spring Discount

Grain Bins	Floors w/12" Supp. & Flashing
18'x18' 4,195bu. \$ 7,398	18'....\$2,065 30'....\$ 5,764
27'x21' 11,265bu. \$14,850	21'....\$2,824 36'....\$ 8,211
42'x24' 32,245bu. \$34,617	27'....\$4,710 42'....\$11,182

GMLS Industries, Inc.
 PH: 660-699-2179 or 620-983-2136
www.gmlsindustries.com

Equipment & Supplies

IHC 1020 20' floating platform; IHC 1020 17 1/2' floating platform; NH 973 20' 20' floating platform; NH 973 25' floating platform. 217-658-4761

JD 640 rake, rubber teeth, dolly wheel, new tires, \$1750.00; 10' pull type Brush Hog, \$1,000. Case spreader ground driven. 217-658-4761

JD 930 Poly driven, poly under; JD 220 Poly under; JD 216 Poly under; HD cart for 30' JD flotation tires, \$750.00 other HD carts. 217-658-4761

1966 John Deere 3020, gas, 5082 hours, wide front, new paint, just rebuilt clutch, 540 and 1000 PTO, ROPS available, nice shape, runs good, ready to work, \$8,500. 660-684-6977

Vermeer R23 twin V rake, hydraulic drive, manual fold, adj. raking width 18'x23', ready to use \$4500. 217-257-1385

NEMO ADS SELL! Call for more information and specials. **660-665-8500.**

Equipment & Supplies

MF 850 Combine diesel, 30.5x32 tires, chopper, chaff spreader; IHC 1440 diesel combine, MF 750 combine diesel; MF 918 platform. 217-658-4761

NI 5112 hyd swing haybine; IHC 1300, 3 PT bar mower; round balers, Vermeer 605 C; 605 D; JD 500; NH 851; \$500.00 each. NH 855 \$750.00 217-658-4761

WANTED TO BUY: Farm Machinery and Estates. Call James L. Johnston. 573-473-4904

250 Gallon water tank, fits pickup bed, sets over wheel wells, with shut off valve. \$245. 217-257-1385

Small wheel disks Kewanee 8', Kewanee 12', JD 10', IHC 470 15' dual wheels; 2 row 3 PT cultivator; plows 2 3 or 4 bottom, 3 PT. 217-658-4761

Hay/Feed/Seed

Hay for sale: 80 bales of mixed grass mostly brome; CRP hay 339 bales. Baled by JD 567. Call for more information **660-651-8546 Atlanta MO**

Trefoil, clover, brome and timothy mixed Hay, 4x5 net wrapped, easy to haul, \$60/bale, loader and delivery available. Kirksville Area 660-988-4176

Are you having a garage sale or rummage sale? Call us to advertise. **660-665-8500.**

Horses & Mules

2007 Registered AQHA Dun Quarter mare with King-Poco Beno Dun Stud colt at side, nice pair, \$4,500. 660-874-4964 leave message

2006 Registered Buckskin mare 98.80% Foundation with 98.22% Foundation Grulla stud colt at side, mare bred back. 660-874-4964 leave message

4 Year old Registered Paint mare King and Poco Bueno with Grade solid gray Filly at side, nice gentle mare, halter broke, asking \$3,500. 660-874-4964 leave message

Livestock

Fish for stocking ponds. Catfish, Grass Carp, Crappie, Bluegill, Redear, Bass and minnows. Heindselman Family Farms. Call Greg 660-341-5692.

Edina Livestock Sales
 Edina, Missouri

Friday, August 5th
 No Sale

Friday, August 12th
 Special Feeder Calf Sale

Watch for Upcoming Cow Dispersal Sale

To Consign For Any or All Sales or For Information Call:
 Owner - Kevin Strange • Cell: 660-341-9974
 Ryan Strange • Cell: 660-341-9721
 Sale Barn: 660-397-9999

Field Reps:
 Bill Tom Hall 660-342-5420 Mike Bronestine 660-341-9965
 Jason Bichsel 660-216-0373 John Powell 660-341-1717

READY TO CAPITALIZE ON RECORD LAND VALUES? CALL THE LAND SPECIALISTS.

— OVER —
6,000 ACRES SOLD OR PENDING
IN 2022 BY THE JEFF PROPST TEAM.

Sullivan, MO - 580 Ac.
Mercer, MO - 660 Ac.
Adair, MO - 112 Ac.
Schuyler, MO - 161 Ac.
Clark, MO - 198 Ac.
Mercer, MO - 399 Ac.
Linn, MO - 77 Ac.
Mercer, MO - 40 Ac.
Mercer, MO - 80 Ac.
Van Buren, IA - 425 Ac.
Knox, MO - 105.6 Ac.
Mercer, MO - 71 Ac.
Mercer, MO - 160 Ac.
Adair, MO - 172.1 Ac.

Mercer, MO - 609 Ac.
Putnam, MO - 515 Ac.
Mercer, MO - 151 Ac.
Mercer, MO - 78 Ac.
Sullivan, MO - 580 Ac.
Chariton, MO - 80 Ac.
Putnam, MO - 290 Ac.
Putnam, MO - 44 Ac.
Mercer, MO - 195 Ac.
Clark, MO - 82 Ac.
Sullivan, MO - 36.2 Ac.
Mercer, MO - 62 Ac.
Mercer, MO - 41.55 Ac.
Mercer, MO - 517 Ac.

CONTACT ME TODAY TO LEARN MORE ABOUT SELLING YOUR
HUNTING, FARMLAND OR PASTURELAND ON THE OPEN
MARKET OR TAKING IT TO AUCTION.

JEFF PROPST

Whitetail Properties Real Estate LLC.
Agent, Land Specialist Northeast
& North Central Missouri

636.209.0362

jeff.propst@whitetailproperties.com



WHITETAIL PROPERTIES REAL ESTATE

HUNTING | RANCH | FARM | TIMBER

WHITETAILPROPERTIES.COM



A DIVISION OF WHITETAIL PROPERTIES REAL ESTATE, LLC

RANCHANDFARMAUCTIONS.COM

Whitetail Properties Real Estate, LLC DBA Whitetail Properties, DBA Whitetail Properties Real Estate. In the States of Nebraska & North Dakota DBA Whitetail Trophy Properties Real Estate LLC. Licensed in CO, MN, ND, SD, TN & WI - Jeff Evans, Broker. Licensed in FL, KS, MO, OH & PA - Jefferson Kirk Gilbert, Broker. Licensed in TX & NM - Joey Bellington, Broker. Licensed in IN - Bill Minor, Broker. Licensed in AL, GA, LA, & MS - Sybil Stewart, Broker. Licensed in TN - Tim Burnette, Broker. Licensed in TN - David Pritchard, Broker. Licensed in AR - Anthony Chrisco, Broker. Licensed in NC, SC, VA - Chip Camp, Broker. Licensed in IA, NC - Richard F. Baugh, Broker. Licensed in MI - Edmund Joel Nogaski, Broker. Licensed in IL, MD, WV - Debbie S. Laux, Broker. Licensed in ID, MT, OR, UT, WA, & WY - Aaron Milliken, Broker. Licensed in NY - John Myers, Real Estate Broker. Licensed in OK - Dean Anderson, Broker. Licensed in KY - Derek Fisher, Broker. Licensed in OH - Jeremy Schaefer, Principal Broker. Licensed in NE - Jason Schendt, Broker.



MAPLES REPERTORY THEATRE

The Nerd:
June 24 - July 31

Hank Williams:
Lost Highway:
July 15 - August 7

The Bikinis:
A New Musical
Beach Party
Oct. 5 - Oct. 15

2022 Season is OPEN NOW!

Adult: \$33
Student: \$22
Group Rate: (12+): \$28

Season Ticket: \$162
You Pick Four: \$120

Professional Theatre in Upstate Missouri
102 N. Rubey St., Macon, Mo 63552
Phone # 660-385-2924 • maplesrep.com

JOIN US FOR THE 8TH ANNUAL Helping Hands Benefit Auction

Supporting the Clinic for Special Children and local needs.

Saturday, August 20, 2022
@ Richard Good Farm 10507 County Road 813 Memphis MO

9:30 Candy Drop | 10:15 Auction | 10:30 Start Serving Bar-B-Q Lunch | 12:00 Remarks by CSC Doctors

Lakewood RV camper rental, 4 outdoor wicker chair set, 2-poly glider rockers, 2-outdoor table & chair sets, rocking camp chairs, 2-14' canoes, kayak, chicken BBQ grill, Mantis tiller, 40 small straw bales, 10 round alfalfa mix hay bales, 6 ton jack stands, GPI fuel transfer pump, B&W Tow & Stow hitch, log chains, chain binders, ratchet straps, John Deere & Case IH neon wall clocks, Lots of Milwaukee Tools: impacts, drills, saws, shop vac, trimmers, weed eater, 16" chainsaw and more, 360 hunting blind, croquet, John Deere-o-poly, Chase marble game, CAT riding tractor, John Deere & Case IH riding toys, bean bag toss, web swing, Buck-a-ball marble game, 2- wooden barns, 16' trampoline, sandbox backhoe, 20" girl & boy bike, girls dresses, Timeless Harmonies musical clock, succulent wreath, large cutting board and cheese slicer by Randy Ward, 8 drawer sewing machine cabinet, Quilts: Dahlia, 98x113 elk trip around the world, 108x110 quilted truck scenery, 98x104 deer panel quilted, 90x103 Charcoal & blue starburst log cabin quilted, Peach & blue sunset at shore log cabin quilt top, fabric theme baskets, fresh baked goods, theme/gift baskets, meal certificates, toys, food and much, much more!!!

Donations can be dropped off at Richard Good Residence. from Wed.-Sat. morning, for other pick-up locations and questions contact:

Bryan B. 660.342.2733
Harlan B. 660.341.4113
Ed Lynn G. 660.341.3040
Michael M. 660.342.8833
Nevin H. 660.216.0196

Friday, August 19, 2022 Cheesesteak & Salad Bar Supper
Serving 5:00-7:00 | Introduction 7:30 sharp
Slides & Speech by the Clinic for Special Children
Followed by: Chorus Singing

The Clinic for Special Children will have a stand set up to do Carrier Testing, the day of the auction. Cost for the Plain Insight Panel is \$99

6th Annual Central Missouri Honor Flight Charity Tractor Pull

Presented by: **MFA Incorporated Charitable Foundation**
advocating rural community & agricultural education

Macon, MO
Aug 13 • 7:00 PM
Gates open at 4pm
Macon Fairgrounds
Adults \$20 • Kids 6-12 \$10

This pull has donated over \$156,000 to Central MO Honor Flight the past 5 years!!

Pro Stock Tractors
Pro Stock 4X4 Trucks
Unlimited Super Stock Tractors
Light Super Stock Tractors
Limited Pro Stock Tractors
Super Modified TWD Trucks
Light Limited Pro Stock Tractors
Modified 4 Wheel Drive Trucks

A BIG thank you to these Class & Platinum Sponsors:

D&J'S SCREEN PRINTING and embroidery

SLINGIN' INK for OVER 25 YEARS

816 W NORTHTOWN RD
KIRKSVILLE, MO
660.665.8001

let's be friends

KIRKSVILLESHIRTS.COM

Miscellaneous

Amana electric stove, coils, \$150, Kitchen table, 2 leafs with chairs, \$95; Curio Cabinet, \$50; Vintage Secretary desk with drawer, \$25; Singer Sewing machine/table; Futon \$10; Desk \$10; Chest of drawers, \$10; Kitchen utility cart \$10; Much more, all will be sold. Kahoka Area 217-257-1385

Watermelon, Tomatoes, Potatoes, Cucumber, Zucchini, Onions, Beets, Schmucker Produce 9:00-6:00. 7 miles North of Kirksville to Ft. Madison Way 1/2 mile East

LIVESTOCK MKT, INC.

NO SALE Tuesday, August 9

Tuesday, August 16 - 11am
Special Feeder Calf & Yearling Sale

90 hrs 625lbs (pot load) 30 str/hfrs 600-700lbs
65 str 825lbs (pot load) 25 str/hfrs 500-700lbs
40 hrs 675lbs 10 str/hfrs 600-700lbs
35 hrs 600lbs This is only a partial listing, many more by sale date.

Tuesday, August 23 - 11am
Special Cow, Cow/Calf & Breeding Bull Sale

CLARKSON - 33 Black Heifers; 2 years old, bred to Angus bulls, start calving Sept.10, 90 day period.
CLARKSON - 77 Fancy Black Angus - Complete Dispersal: 3-7 years old, bred to Angus bulls. Cows are home raised, start calving Sept.10th, 60 day calving period.
CLETON - 30 Charolais Cows: 4-7 years old, bred to Angus bull.
HUNTSMAN - 22 Black & Red Cross Bred, calving end of August-October.

Cafe Open **Lolli Livestock Market, Inc.** Cafe Open
704 Main st * Macon, MO * 660-385-2516 www.lollibro.com
Frankie 660-651-4040 * Tim 660-651-3496 * Joseph 660-346-9711
Jordan 660-346-0410 * Cody 660-676-9392 Cattle accepted on Sundays

fb farmbank Growing Together

Green City Milan Kirksville
660-951-8430 • 660-951-8432 • 660-951-8431
www.farmbank.com

Lawn & Garden

Kubota T1600 diesel lawn mower, 42" cut, 512.8 hours, new battery and filters, excellent condition, \$2750. 660-639-2207 No Sunday Calls

Miscellaneous

Vermeer 505 Super I hay baler, field ready, \$6000. 660-341-4982

Standard Red Australian Shepherd ASDR Registered, wormed and shots, tri's and merles available. Call or text 319-520-8660

KUBOTA T1600 DIESEL lawn mower, 42" cut, 512.8 hours, new battery and filters, excellent condition, \$2750. 660-639-2207 No Sunday Calls

Call about our classified ad specials. 660-665-8500.

Rooferman LLC.
302 Third Str. Moberly, MO 65270
660-833-9162
owner: Wade Sanderson

LANCASTER LUMBER INC.

Lancaster, MO.
1-800-424-5071
LAN-DOW BUILDINGS
www.lancasterlumber.com

EMPLOYMENT

Seasonal

Wanted Someone to work from September to January for Harvest Season. 660-216-5535

MERCHANDISE

Lawn & Garden

38" Riding Mower, new belt, battery, seat, oil change, excellent shape, \$400.00 cash. 573-406-4543 or 573-767-1338

CONAGRA BRANDS

Conagra Brands in Macon is now hiring for all shifts, both full-time and part-time positions in Production, Sanitation and Maintenance.

WEEKLY ATTENDANCE & EMPLOYEE REFERRAL BONUS

Join the Conagra Brands team in Macon with competitive hourly starting pay of \$18.37 per hour, and an excellent benefit package that includes medical, dental, vision and life insurance.

Salary positions in Sanitation and Maintenance are also available.

Open interviews are conducted each Wednesday in the plant between 9 AM and 11 AM, and other times by appointment.

Apply online at jobs.conagra.com/careers and follow the links to submit your application OR text Conagra to 25000.

Green Acres Sew & Vac

221 W Grand Ave. Memphis, MO 660-465-7131 greenacressewvac.com

GET FREE GIFTS WITH PURCHASE OF BERNINA 570 QE!

Made especially for quilters

- Enjoy superb fabric feed
- Handle big quilts with ease
- Your threads are cut automatically
- Precise and perfect stitches
- Patchwork foot #97 included

FREE GIFTS WITH PURCHASE
Value up to \$1352.95

Valid through August 31, 2022. See store for full details.



LAN-DOW BUILDINGS
"We Build To Suit Your Needs"
"Custom Built"
 Pole Barns • Garages • Utility Buildings
"H" Don or Dick Middleton
Memphis Lumber Co.
1-800-337-5858 • 660-465-8595
Fax: 660-465-8596

Premium Metal Roofing



AW Metal Inc.
 Metal Roofing Headquarters
 641-664-3990 • ammetal.net

Building Supplies

Roof Trusses 2', 4', or 8' on center up to 80' wide Call with your size and quantity and we'll give you a quote. Shelby Supply 660-299-0615

Insulated Vinyl windows in stock up to 3'x5' with Lowe. Shelby Supply 660-299-0615

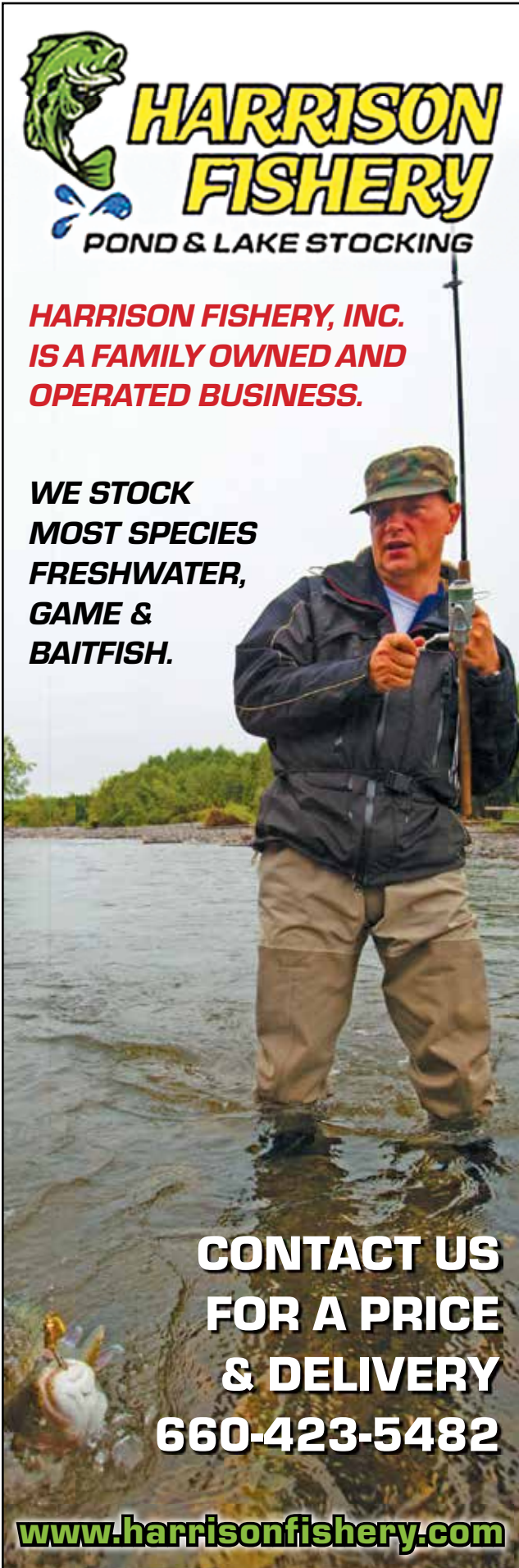
Pets & Supplies

Standard Red Australian Shepherd ASDR Registered, wormed and shots, tri's and merles available. Call or text 319-520-8660

11 Week old white Boxer female pup, \$300; also Great Dane Mantle female, 18 months old, \$300. 660-292-1235

AKC German Shorthair Pups 1 male 4 females Parents are excellent hunters, many titles in blood lines 217-440-3297 for more info Quincy IL

NEMOTRADER.NET



HARRISON FISHERY
POND & LAKE STOCKING

HARRISON FISHERY, INC. IS A FAMILY OWNED AND OPERATED BUSINESS.

WE STOCK MOST SPECIES FRESHWATER, GAME & BAITFISH.

CONTACT US FOR A PRICE & DELIVERY
660-423-5482

www.harrisonfishery.com

Acres & Lots-Sales

240 ACRES M/L MACON COUNTY ONLINE REAL ESTATE AUCTION
1423 Desoto PL Elmer Mo 63538
Auction begins August 19 and ends August 28 2022 @ 7 PM
 Go to missourilandandfarm.com for details and terms.
 Call or text 660-788-3333 for information.

Due to the death of our grandparents we will sell the following Real Estate. This farm has been in the Jones family for over 100 years this is a great opportunity to expand your farm operation or get some good Macon County hunting land with income.

OPEN HOUSE: AUGUST 14 from 2-4.
Tracts 1 and 2 will be divided by survey.

TRACT 1: 80 acres m/l with older 2 story home and machine shed currently in pasture/hay ground but could be farmed if desired. Abundant wildlife on farm.
TRACT 2: 80 acres m/l currently in row crop production has Turkey creek running along south side some woods great hunting tract with income.
TRACT 3: 74 acres m/l this tract is located just north of Ethel Mo Turn North on Walnut street to Diamond Ave about a mile farm is on the East side of road and is currently in hay production with abundant wildlife.

FAMILY OF DICK (RED) JONES, SELLERS



MISSOURI LAND and FARM AUCTIONS
Dave Atkinson 660-788-3333

BEAMON TRUST AUCTION
ONLINE Auction starts August 8 and ends August 21 at 6 P.M.
 Pick Up August 22 from 10 AM to 3 PM check out missourilandandfarm.com for terms and more information
ONLINE AUCTION ONLY OVER 450 LOTS

Preview August 13 from 10 AM to 2 PM at the farm Located at 2723 CR 2160 Huntsville Mo Due to the Death of John Beamon we will sell the following items. AUCTIONEERS NOTE: There are over 450 lots on this auction something for everyone from Farm related, hunting, household, antiques, hardware and a lot of tools call or text for more info 660-788-333 lots unlisted go to missourilandandfarm.com to register and bid!!!

TRACTOR, FARM EQUIPMENT: CASE IH 7240, FWA, 4584 hrs see to appreciate - Case 4300 field cultivator 24' - IH 315 cultipacker - Bush Hog 2615 mower - gravity wagon - Case IH 2500 ripper - Hutchinson Auger - IH 496 disc - other equipment
SKID STEER, MOWER, ATV, SUBURBAN: Skat Trak 2000D, runs good - tree puller - bale spear - 1999 Suburban 4x4, runs good, high miles - Honda 4x4 four wheeler - Gravely 60" mower - Trailer Man 28' trailer dual axle flip ramps - farm trailer - new grouser tracks
TOOLS, OIL, HARDWARE: Lots of Milwaukee tools - wrenches - lot cases of oil - lot of new nuts bolts and bolt bins - electric motors - generators - power washer - air compressor - drill press - Pallet racking - metal lathe tools - lots more.

HUNTING, OUTDOOR RELATED: Red Neck bale blind - tree stands - hunting clothes - Duck blinds - Ice eater - trap thrower - gun rack - pop up blind - mojo dove tree - turkey decoy - grass mat - marsh seat - Remington ladder stands - lots more.

COMMERCIAL KITCHEN, LOG FURNITURE, HOUSEHOLD: True commercial refrigerator - Sunfire gas stove - other refrigerators - sofa - recliner - bunk beds - queen log bed - log bunk bed with full on bottom, log lamp table - dishes and more - iron skillets - kitchen utensils - microwaves - much more



JOHN C and MARGRET SUE BEAMON TRUST, SELLERS
MISSOURI LAND AND FARM AUCTIONS
 DAVE ATKINSON 660-788-3333 JEFF QUINN 660-734-3925

Mobile Homes For Sale

TINY HOMES We gottem 573-881-3283

True Modulars 30 to 60 day delivery available, 3 and 4 bedroom. 573-657-7040 chateauhomes.net

Acres & Lots-Sales

223 acres bottom land and pasture with excellent highway frontage. Enterprise Realty. 660-582-7160.

20-80-180 or 273 ac Excellent CRP Enterprise Realty 660-582-7160

RECREATION

Motorcycles

WANTED TO BUY: Harley Davidson's, any year, any condition, cash money. Days 660-263-1356 or 660-537-0068

Wanted

WANTED TO BUY: Harley Davidson's, any year, any condition, cash money. Days 660-263-1356 or 660-537-0068

Air Conditioning/Heating

The Ultimate Wood Heat.



- **More Comfort** - Thermostatically controlled wood heat.
- **Peace of Mind** - Keep the fire outside and eliminate the dangers associated with indoor wood heating.
- **Save Money** - Wood is a renewable, inexpensive and often free energy source.

CAMPEN
 Heating & Air Conditioning
 573-288-8966
 Canton, MO
CentralBoiler.com

Show Me Plumbing Services



- General Mini Excavation & Skid Steer Work
- Livestock Watering
- Waterlines & Sewer Systems
- Residential Services & General Plumbing
- Utility Trenching

Stan Schrock 660-988-1163
Greentop, MO 660-766-2636

Bush Hogging

ATTENTION LAND OWNERS!
BUYER OF STANDING TIMBER
OWNER /OPERATOR OF SAWMILL - BUY/CUT LOGS
CERTIFIED - BONDED - INSURED



TRI STATE TIMBER L.L.C.
 PH. 660-341-4921 or 660-465-2975
 353 1/2 GRAND AVE. • MEMPHIS, MO 63555

Home Services



Signature
 Overhead Doors and Remodeling, LLC
660-785-0248
www.signatureremodelingkv.com
 Residential and Commercial Installation and Service

Campers & Trailers

Beilstein CAMPER SALES

CALL US NOW for the best prices...
 28248 327th Ave.
 LaGrange, MO • Hwy 61 South,
 4 Miles South of LaGrange, MO

573-655-2254

<p>#110503</p>  <p>\$7,995</p> <p>2022 Darkhorse Cargo 7x14 TA TA35 V-Nose Ramp Gate</p>	<p>#704539</p>  <p>\$43,995</p> <p>2020 Cherokee Arctic Wolf Suite 3550 3 Slide-Outs, King Bed, Rear Entertainment</p>	<p>#004001</p>  <p>\$13,995</p> <p>2006 Crossroads Crossfire 26FS TOY HAULER TOY HAULER, Large Garage, Queen Bed</p>
<p>#452055</p>  <p>\$27,495</p> <p>2018 Keystone Outback Ultra-Lite 240URS TOY HAULER, Rear Slide-Out with King Bed</p>	<p>#072696A</p>  <p>\$23,495</p> <p>2022 Salem FSX 178BHSK Slide-Out, Light Weight Easy to Tow</p>	<p>#429888</p>  <p>\$36,995</p> <p>2022 Salem Cruise Lite 263BHXL Large Slide-Out, Double Over Double Bunks</p>

Beilstein Camper Sales
www.beilsteincampersales.com

Since 1956, family owned Beilstein Camper Sales has provided exceptional value and service to our customers. We feature a wide selection of new RVs from Forest River, Heartland and Keystone. We're on the Avenue of the Saints along side Highway 61, four miles south of La Grange, Missouri. Stop by today to get a great deal!

SERVICES

Chat/Dirt/Gravel

DIRT WORK All types of excavation, reclaiming overgrown fields, including CRP and WRP. Building site preparation, creating new trails and crossings, Food plot development and maintenance. Leveling and grading, wetland construction and maintenance. Pond and lake cleaning and construction. Call for quotes. 660-342-2701

Construction-Services

SPRAY FOAM INSTALLATION! We install open and closed cell spray foam. Strengthen your building and block drafts! Over 1 Million bd. ft. applied. Contact Lester at 641-208-7071, Spray Tex LLC 16302 192nd Street Bloomfield IA 52537

NEMO ADS SELL! Call for more information and specials. 660-665-8500.

Miscellaneous

SCOTT HUSKEY'S HOME SERVICE R-10 Foundation Enclosure Systems for manufactured, modular, & site built homes. Saves on utilities and prevents freeze ups. General maintenance and repairs since 1972 573-696-3468 "GO DAWGS"

Miscellaneous

ROLLINS RECYCLING ROUNDUP!
 AUGUST 12TH - 22ND
 BROUGHT TO YOU BY
 Community Opportunities, Inc.
RECYCLING TRAILERS WILL BE AT:
 Kirksville
 El Kadir Shrine Club, 2401 S Baltimore Str
 Northtown Shopping Center, North Baltimore across from America's CarMart
 Greentop
 Corner of Main & 6th Streets, (State Hwy K) Near City Hall

WHAT CAN I RECYCLE?
 Aluminum Cans
 Newspapers, Magazines & Books
 Sorted Office Paper (nothing confidential)
 Envelopes & Junk Mail
ALL Cardboard:
 Boxes, Food Containers (frozen, boxed, soda)

Please break down your cardboard boxes to allow more room for collection!



Have Clutter? Need room? Call the NEMO classifieds. We can help! 660-665-8500.

Miscellaneous

Tomatoes \$2.00 lb, Zucchini \$.50, Cucumbers \$.50, Green Onions and More Produce Coming Soon. Kauffman Produce 11538 Iceberg Ave, LaPlata MO 63549

NEMOTRADER.NET

660-385-5726



Still TOWING
 29105 State Hwy. AX
 Macon, Mo. 63552

Are you having a garage sale or rummage sale? Call us to advertise. 660-665-8500.

VICTORY
Metals & Recycling
 Kirksville, MO 660-665-8000
 victorymetalrecycling.com

For current scrap prices call or visit our **Facebook Page**

★ Construction/Debris Recycling

Visit Kirksville's construction & debris recycling facility and save trips to the landfill! Take advantage of this service for solid waste removal by bringing your landfill items to Victory Metals C & D recycling facility located at 3602 N. Industrial Rd.

★ Roll-Off Container Service

10-20-30-40 Cubic Yard Dumpsters

3602 N. Industrial Rd., Kirksville, MO 63501
 djanesvmr@gmail.com
 www.victorymetalrecycling.com



LIME SPREADING SERVICE

Equipped with variable rate



PEAVLER TRUCKING LLC
 Alan Peavler, 660-216-0618 - Jared Peavler, 660-342-7685

JAGUAR LUMBER
 Attn: Land Owners

Buyer of Timber
 *All species also Select yard Trees/Logs over 40" diameter,
 *Trees are selectively cut to insure optimal Forest Regeneration.

Certified & Bonded | Lavon Gingerich 641-664-2080

CELEBRATIONS!
PARTY RENTAL
 KIRKSVILLE, MO

FOR RENT

- Tables & Chairs
- Tents • Bounce House
- Cotton Candy Machine
- & More!

660-626-5162 or 660-665-9380

Tree Service

TIMBER MANAGEMENT.

Purchasing Walnut, Oak, Maple & Other Species

WE PAY BEFORE WE CUT

BONDED & INSURED
641-895-8209

Est. 1968

Music

OPENING WEEKEND
MISSOURI STATE FAIR
 ★ SALUTE TO OUR HEROES ★

MSF FIRE DEPARTMENT CELEBRATING 60 YEARS!

BUCKETS OF FUN
 EST. 1901

AUG 13 LAW ENFORCEMENT & FIREFIGHTER APPRECIATION DAY
FREE GATE ADMISSION
 for Law Enforcement, Firefighters, EMTs & Paramedics
 Sponsored by **pepsi.**

- Must provide appropriate I.D.
- \$1 admission for immediate family (spouse and dependent children)

AUG 14 MILITARY APPRECIATION DAY
FREE GATE ADMISSION
 for Active Military, Veterans & Delayed Entry Recruits
 Sponsored by **GONETSPEED**

- Must provide appropriate I.D.
- \$1 admission for immediate family (spouse and dependent children)

Military Resource Fair, 10 am - 4 pm
 Military Appreciation Ceremony, 2 pm

AUG 11-21 2022 SEDALIA
MOSTATEFAIR.COM
 MISSOURI Agriculture

SPACE AVAILABLE
 Ask about our affordable advertising rates to fit any budget!

NEMO Trader Classified COUPON

2 Classified Ads for \$5.00
 20 cents per word over 20 words
 For an additional \$1.00 run in the Kirksville Daily Express one time.
 For and additional \$2.00 run in the Saturday Kirksville Daily Express and Kirksville Crier one time each.
 Must be Mailed in or brought in along with payment
 Picture Ads Not Included with Coupon!

Choose Classification

<input type="checkbox"/> Agri-Business	<input type="checkbox"/> Real Estate	<input type="checkbox"/> Transportation
<input type="checkbox"/> Announcements	<input type="checkbox"/> Rentals	<input type="checkbox"/> Yard Sales
<input type="checkbox"/> Employment	<input type="checkbox"/> Real Estate Sales	<input type="checkbox"/> Auctions & Estate Sales
<input type="checkbox"/> Financial	<input type="checkbox"/> Recreation	
<input type="checkbox"/> Merchandise	<input type="checkbox"/> Services	

Ad No. 1 Each Box Represents a Word (20 words or less)

Ad No. 2 Each Box Represents a Word (20 words or less)

Name _____
 Mailing Address _____
 Phone Number * _____
 this is required*
PO Box 809 Kirksville, MO 63501 • 660-665-8500

Creative Outdoor Solutions

Trimming, Mulching, Planting, Hard Scaping, Fall Clean up and More

FALL LANDSCAPING SERVICES AVAILABLE

Give us a call at 660-342-7064

Lawn/Garden/Landscape

New 3 pt. tillers, heavy duty, gear driven, 7' to 12' starting at \$4,050. 660-874-4455.

Have items to sell? Have too much stuff? Let us help you get the most for it! Call 660-665-8500.

TRANSPORTATION

Wanted

Wanted 1991 to 1993 S10 4x4, any condition, for 16 year old. 660-341-6267

Are you having a garage sale or rummage sale? Call us to advertise. 660-665-8500.

Double YOUR IMPACT with Print & Online ADVERTISING!

Automobiles

Judd Motors Call 660-457-3700 Hwy 63 North, Lancaster, MO

2017 Colorado crew cab, Z71, 4x4, heated seats, 76k miles, red, **only \$26,900** **SOLD**

2014 Dodge Grand Caravan, SXT, power seat, power sliding doors, power rear hatch, Stop-N-Go, silver, only 92k miles, **now only \$13,900**

2007 Chevy Trail Blazer 4.2L, 112K, very nice, **only \$8,995** **SOLD**

2006 Chevy 1500, ext cab, 4wd, V8, 132k, Silver Birch, Very nice **only \$11,250**

2004 Chevy Trailblazer, LT, 4wd, 4.2L, cloth, only 108k, charcoal, nice, **only \$6,995**

2007 Ford Freestyle Limited, AWD, leather, sunroof, 3 row seating, 220K, black, drives great, **only \$5,995**

Cumberland Building Dealer

www.juddmotors.com | In Business Over 75 Years Curly and Kevin Judd

WE HAVE YOUR DREAM CAR!

AMERICA'S CAR-MART

Keeping You on the Road

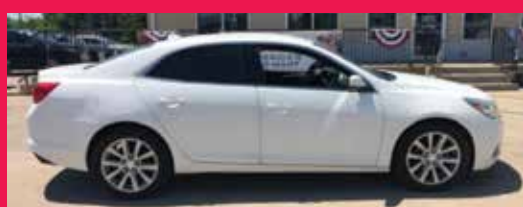
car-mart.com



We Offer:

- Peace of Mind Package
- Service Contract Plus
- Accident Protection Plan
- 100% Satisfaction
- Pay Your Way
- Low Down Payments
- Quality Used Vehicles
- Flexible Financing
- Hand Selected Vehicles
- Convenient Payment Options
- Start Your Approval Online
- Over 150 Locations
- 40 Years in Business
- We Buy Cars

660-956-4849 • 2015 North Baltimore • Kirksville



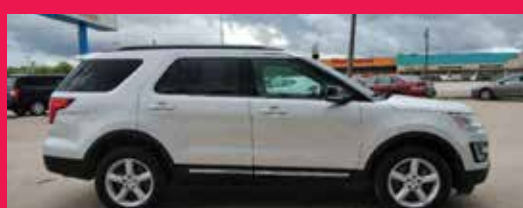
2014 CHEVROLET MALIBU
FWD, 4 Cyl., White



2011 TOYOTA RAV4
FWD, 4 Cyl., Black



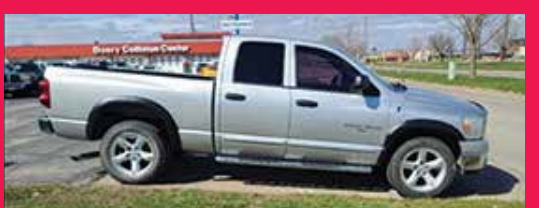
2009 FORD F150
4WD, 8 Cyl., White



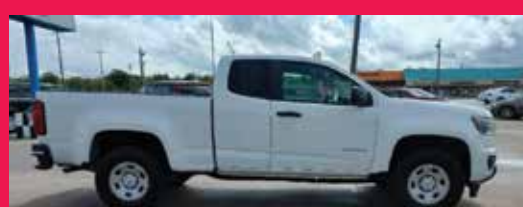
2017 FORD EXPLORER,
4WD, 6 Cyl., Silver



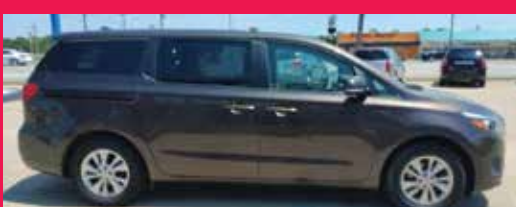
2013 FORD ESCAPE
FWD, 4 Cyl., Silver



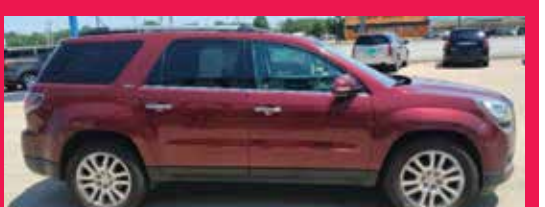
2007 DODGE RAM 1500
RWD, 8 Cyl., Silver



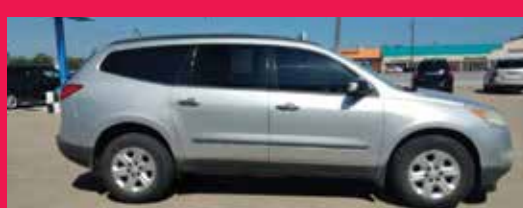
2019 CHEVROLET COLORADO
RWD, 4 Cyl., White



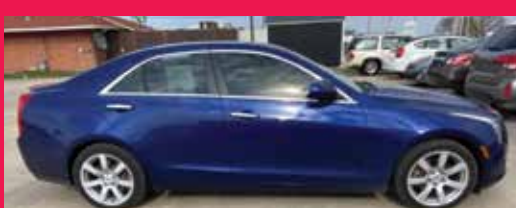
2017 KIA SEDONA
FWD, 6 Cyl., Brown



2016 GMC ACADIA
AWD, 6 Cyl., MAROON



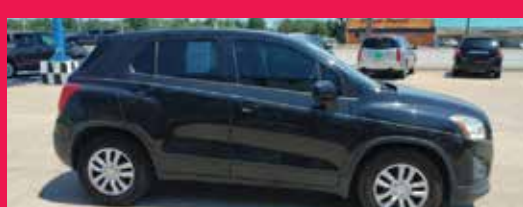
2011 CHEVY TRAVERSE
AWD, 6 Cyl., Silver



2013 CADILLAC ATS
RWD, 4 Cyl., BLUE



2011 CHEVY EQUINOX
FWD, 4 Cyl., Gold



2016 CHEVROLET TRAX
FWD, 4 Cyl., Black



2013 FORD FOCUS
FWD, 4 Cyl., Gray



2010 FORD F150
4WD, 8 Cyl., Red.



2017 NISSAN ALTIMA
FWD, 4 Cyl., Black



2013 HYUNDAI GENESIS
RWD, 6 Cyl., Gray



2016 KIA SPORTAGE
AWD, 4 Cyl., Silver

AMERICA'S CAR-MART

Keeping You on the Road



KYLE JENNINGS
GENERAL MANAGER

660287jn

AUTO'S UNLIMITED

FEATURED VEHICLES

660-665-8149 | 660-341-0965

No Sunday Calls! | 17406 Bob Rd • Kirksville, MO

Ford Escape XLT

Excellent Condition



\$6,000

2007 Saturn Ion II

82,000 miles, 30 - 38 MPG great shape!



\$5,000

1986 Bronco 2

with 64,000 MI cold AC excellent condition



ALL VEHICLES HAVE GONE THROUGH A 60 PT INSPECTION! STATE INSPECTED! CALL FOR MORE INFO!

TRANSPORTATION

Trucks, 4x4's, SUV's

1996 Ford F-250 extended cab, short bed, 4x4, farm truck, runs good, some new parts, needs exhaust work, 460 motor, automatic transmission, has rust but solid bed, \$3,500 (Cash) As Is. 660-874-4964 leave message

Call us for all your advertising needs. 660-665-8500.

TRANSPORTATION

Trucks, 4x4's, SUV's

2015 Chevy Silverado 1500, crew cab WT, 4x4, 5.3L, well equipped, windows, locks, tow, keyless brown-stone metallic, 143,000 mile 1 owner, \$18,900.00 Accelerators since "1974" Kahoka, MO 217-257-1385 or 660-727-3455

Call about our classified ad specials. 660-665-8500.

FOR SALE!



2017 CHEVY SILVERADO

4WD 5829 miles

\$47,500 (obo)

660.341.0166

MUST SELL ALL MUST GO!



1999 F250 Superduty with welder tool box loaded Also garage full of tools & Drill Press

Call 660-342-2122 or 660-216-5656

Turn Your Clutter Into Cash

\$254

Get money in your pocket and room in your garage when you sell your stuff and promote your sale through the newspaper classifieds!



\$33

\$95

\$21

\$57

There's a better way to get noticed.

Keep life simple. Take out an ad.

Warranty • 319-696-2981 • Warranty • www.rsautosalesinc.com • Warranty • 319-696-2981 • Warranty • 319-696-2981

R.S. AUTO INC.

www.rsautosalesinc.com

Office (319) 696-2981
214 S. Center St
Lockridge, IA 52635
rsautoinc@yahoo.com

319-696-2981 Check Our website for our wide Variety on
4x4 Trucks - Cars - Mini Vans - Handicap Vans - SUV
Motorhomes & Much More

 73K Miles \$16,900 '72 Chevy Camaro SS Automatic, Gas, 2 Dr, New Engine, New Transmission, Local Trade, Normal Wear	 86,911 Miles \$12,900 '15 Chevy Malibu 2LT 2.5L 4 Cyl, Auto, Gas, Camera, Leather, Black Wheels, 7" Touch Screen, Loaded	 82,357 Miles \$7,900 '14 Chevy Spark 1.2L 4 Cyl, FWD, Gas, Auto, Hatchback, Cloth Interior, Sirius XM, Nice	 113,486 Miles \$21,900 '13 Toyota Tundra Crewmax SR5 5.7L V8, 4x4, Crew, Auto, Gas, Rear Camera, Cloth Interior, Sharp!
 140,900 Miles \$9,900 '14 Nissan Rogue Select S 2.5L 4 Cyl, AWD, Auto, Gas, Cloth Interior, All Power, Extra Clean	 68,649 Miles \$15,900 '14 Nissan Murano Platinum 3.5L 6 Cyl, AWD, Auto, Gas, Sunroof, Camera, Leather, Loaded	 164,675 Miles \$15,900 '13 Nissan Murano S 3.5L 6 Cyl, AWD, Auto, Gas, Leather Interior, Bluetooth, Sirius XM	 101,931 Miles \$8,900 '16 Ford Fiesta SE 1.6L 4 Cyl Gas Engine, FWD, Auto, Sedan, Cloth Interior, Sharp!
 83,272 Miles \$6,900 '14 Nissan Versa Note VS 1.6L, 4 Cyl, Gas, Auto, Hatchback, Cloth Interior, Extra Clean, Rust Free	 124,165 Miles \$7,900 '14 Ford Focus Titanium 2.0L 4 Cyl, FWD, Auto, Hatchback, Camera, Leather Interior, Push Button Start, Sharp!	 177,213 Miles \$6,900 '14 Chevy Cruze LT 1.4L 4 Cyl Gas Engine, Auto, Cloth, Sirius XM, Keyless Entry, Nice	 132,036 Miles \$7,450 '13 Chevy Cruze LT 1.4 4 Cyl, Gas Engine, Auto, Cloth Interior, Touchscreen, Camera
 105,732 Miles \$12,900 '12 Volkswagen Jetta TDI 2.0L 4 Cyl, Auto, Diesel, 4 Dr Wagon, Sunroof, Leather	 114,998 Miles \$7,900 '07 Toyota Prius 1.5L 4 Cyl, FWD, Hybrid Engine, Auto, Push Button Start, Cloth Interior, Extra Clean	 118,073 Miles \$7,450 '11 Chevy Malibu 2LT 2.4L 4 Cyl, FWD, Auto, Gas, Leather Interior, OnStar, Sirius XM	 130,871 Miles \$4,450 '10 Chevy Cobalt LS 2.2L 4 Cyl Engine, Auto, 4 Dr Sedan, Cloth Interior, Normal Wear
 38,403 Miles \$4,450 '07 Chrysler PT Cruiser 2.4L 4 Cyl, FWD, Auto, Gas, Sunroof, Cloth Interior, Normal Wear	 160,220 Miles \$3,450 '07 Chrysler Town & Country Touring 3.8L V6, FWD, Auto, Gas, Stow-N-Go Seats, 7 Passenger, Cloth Interior	 136,495 Miles \$3,900 '02 Dodge Grand Caravan ES 3.8L V6, FWD, Auto, Gas, Stow-N-Go, 3rd Row Seating, Leather Interior, Local Trade	 Local Trade \$2,900 '04 Dodge Intrepid SXT 3.5L V6 Engine, Auto, Spoiler, Cloth Interior, Normal Wear
 9,266 Miles \$29,900 '16 Chrysler Town & Country Ltd Platinum Handicap Conversion Van, 3.6L Engine, Camera, Leather, Fully Loaded	 129,140 Miles \$12,900 '06 Dodge Grand Caravan SXT 3.8L V6, FWD, Auto, Handicap Van, Pwr Fold Ramp, Cloth Interior, Local Trade	 153,409 Miles \$9,900 '03 Dodge Grand Caravan SXT 3.3L Engine, FWD, Auto, Handicap, Kneel System, Power Ramp	 72,624 Miles \$25,900 '18 Chevy Express G3500 6.0L Gas Engine, Auto, 15 Passenger, Rear Camera, Cloth Interior
 86,123 Miles \$14,900 '13 GMC Terrain Denali 2.4L 4 Cyl, AWD, Auto, Sunroof, Leather, Rearview Camera, Park Assist Sensors	 91,049 Miles \$16,900 '12 GMC Yukon XL Denali 6.2L V8, AWD, Auto, Camera, Sunroof, Leather Interior, 3rd Row, DVD Player	 103,148 Miles \$9,900 '10 Jeep Liberty Ltd 3.7L 6 Cyl, 4x4, Auto, DVD Player, Navigation, Touchscreen, Sunroof, Leather	 119,540 Miles \$7,900 '08 Dodge Nitro SLT 3.7L 6 Cyl, 4x4, AWD, Auto, Leather Interior, Sharp!
 198K Miles \$29,900 '13 Toyota Hilux SR, 3.0L V6 4x4, 5 Spd Manual, Turbo Diesel, Double Cab, Leather Interior, Rust Free, Excellent Shape	 198,121 Miles \$19,900 '06 Dodge Ram 3500 Laramie 5.9L Cummins Diesel, 2WD, Auto, Dually, Crew Cab, Leather, 5th Wheel Hitch	 128,063 Miles \$10,900 '11 GMC Canyon SLE 3.7L 5 Cyl, 4x4, Auto, Gas, Crew Cab, Cloth Interior	 Local Trade \$12,900 '08 Ford F250 SD Lariat 6.8L V10 Engine, Gas, 4x4, Auto, Crew Cab, Leather
 69,428 Miles \$24,900 '13 Jeep Wrangler Unlimited Sahara 3.6L V6, 4x4, 6 Spd Manual, Hard Top, Cloth Interior	 82,066 Miles \$15,900 '15 Toyota Prius 1.8L 4 Cyl Hybrid Engine, Push-Button Start, Backup Camera, Sunroof, Navigation, Leather Interior	 82,066 Miles \$15,900 '15 Toyota Prius 1.8L 4 Cyl Hybrid Engine, Push-Button Start, Backup Camera, Sunroof, Navigation, Leather Interior	 178,852 Miles \$3,450 '05 Chevy Cavalier LS 2.2L 4 Cyl Gas Engine, Auto, 2 Dr Coupe, Sunroof, Cloth Interior
 84,133 Miles \$13,900 '15 Chrysler Town & Country Touring L 3.6L V6, 4x4, 3rd Row Seating, Stow-N-Go, Camera, DVD, Navigation	 163,547 Miles \$3,000 '06 Nissan Murano SL 3.5L 6 Cyl, AWD, Auto, Cloth Interior, Front Bumper Damage, Runs & Drives	 107,086 Miles \$8,900 '01 Chevy Silverado 3500HD 8.1L Engine, Auto, Gas, 2 Dr Reg Cab, 5th Wheel Hitch, 19.5" Wheels, Flatbed, Dually	 178,291 Miles \$2,595 '14 Interstate Cargo Trailer 6'x4' Long, Like New Floor & Interior Walls, Hinged Rear Door, Single Axle

Warranty • 319-696-2981 • Warranty • www.rsautosalesinc.com • Warranty • 319-696-2981 • Warranty • 319-696-2981


August 5, 2022

NEMO


Section B • Page 3

Absolute Land Auction of the KLC Farm

August 30th, Noon at the Caldwell Building



Farm is located approx. 1 mile north of Lewistown, Mo and consists of 830 acres (subject to survey) that will be sold in 11 tracts. Approx. 450 acres tillable, 145 acres pasture and the balance in timber Live auction to be held at 30200 Hwy 16 Canton, Mo.



MEYER & COMPANY
AUCTIONS


Online bidding will be available on our website.
Meyerlistings.bidwrangler.com

For more information call:
636-462-7777

VIRTUAL ONLINE

Clark County, Missouri Land Auction

Monday, August 29, 2022 at 4:00 PM



78.33 ACRES± (Subject to Survey) • 2 TRACTS

**OPEN HOUSE: SATURDAY, AUGUST 13, 2022 • 10 AM - 12 PM
CORNER OF PINE & JACKSON ST. • ALEXANDRIA, MO**

Tract 1 is located approximately 1.5 miles east of Alexandria, MO or approximately 8.4 miles southeast of Wayland, MO in Section 7, T64N•R5W in Vernon Township, Clark County.

Tract 2 is located in Alexandria, MO, and approximately 7 miles southeast of Wayland, MO in Section 8, T64N•R5W, Vernon Township, Clark County.

- ✓ Prime Waterfowl Hunting in Mississippi River Flyway
- ✓ Excellent Whitetail Deer & Wild Turkey Hunting Acreage
- ✓ Secluded Location Just off US Hwy 61 & 136

NEW IN 2013


1,209 sq. ft. cabin with metal roof & siding, and a full kitchen, bathroom, open floor plan, covered front porch & attached garage

Smith Family Trust

Closing & Title Work: Oak Hills Title Co.
309 Lewis Street | Canton, MO 63435 | (573) 288-4462

Real Estate Contracts Prepared By: Smith Law Office
Dennis W. Smith | 307 Lewis Street | Canton, MO 63435 | (573) 288-4461




Auction Managers:
Bill Fretwell (660) 341-7735 & Jennifer Wood (217) 257-8812





(844) 847-2161
Sold@SullivanAuctioneers.com
License #444000107

SULLIVAN AUCTIONEERS, LLC

A FAMILY OWNED BUSINESS SINCE 1979


Headquartered in Hamilton, Illinois, Sullivan Auctioneers, LLC is one of the largest Real Estate and Farm Machinery Auctioneers in the nation. For more than 40 years we have been conducting professional auctions. We connect our sellers with thousands of interested buyers around the world.

Considering an Auction?
CALL OR EMAIL TODAY FOR A NO OBLIGATION CONSULTATION!
Toll Free (844) 847-2161 | Sold@SullivanAuctioneers.com
www.SullivanAuctioneers.com | Lic. #444000107

HAMMOND AND WATSON AUCTION SERVICE MULTIPARTY AUCTION

Sunday, August 14, 2022 at 1:00 p.m.

**Marion County Fairgrounds (cattle barn)
1000 New Street, Palmyra, Missouri**

Antiques • Household • Tools/Fishing/Knives
SELLERS: Bill Austin-- Sue Wenneker --Ron Raney



More pictures and information at:
www.hammondwatsonauctionservice.com



Lionel Hammond & Kirk Watson
573-406-3877
PALMYRA MO

Like us on FB 

Look us up on Auction Zip 

LaPlata Real Estate Auction

Thursday, August 18, 2022 at 5:00 p.m.
Owner: Paul Walker

Directions: 201 South Owensby Street, LaPlata, Missouri. From US Highway 63 at LaPlata, turn West on Clarke Street (State Highway 156) for 0.7 miles then right on South Owensby Street to the auction location. Watch for signs the day of the sale.

Real Estate: This large, two story house would make a great home or excellent investment opportunity. The home has been divided into three apartments. The home has hardwood floors through out, an unfinished attic and a shared large three car garage. The apartments have rented for \$400 per month.


Apartment 1: Three bedroom upstairs apartment with one full bath, one of the bedrooms has a walk-out porch. The main floor has a large foyer, large living room with pocket doors leading into a formal dining room with a water closet.

Apartment 2: Two bedroom apartment with electric heat. Has two accesses, one to the common garage and one to the porch.

Apartment 3: One bedroom apartment with gas heat. Has a large utility room and two accesses, one to the common garage and one to the front porch.

The real estate will sell promptly at 5 PM. To preview the property, please call Scotty at 573-356-4405.

DOWN PAYMENT: 10% of the contract purchase price will be due upon acceptance of the Sales Contract. Personal or Cashier's Checks will be accepted. This is "AS IS, WHERE IS" and is non-refundable. CLOSING: Closing shall be within 30 days of the auction date.



573-356-4405

Michael Cunningham 660-651-2288 • Paxton Pittman 660-346-1956
WWW.SCOTTSAUCTIONSERVICE.COM

There's a better way to get noticed.



Keep life simple. Take out an ad.

NEED TO SELL YOUR HOUSE OR PROPERTY? Get the best coverage around. Call the NEMO and our helpful representatives will assist you in creating your ad. You can even pay over the phone. Call 660-665-8500 for more information.

Kirksville Real Estate, Machine & Tool Auction

Saturday, August 20, 2022 at 10:00 a.m.
Estate of the late Charles Conkin

Directions: 2807 South Haliburton Street, Kirksville, Missouri. From Missouri Highway 11 at South Baltimore Street, follow South Franklin Street East for 0.1 mile then turn left onto Shepherd Avenue for 0.2 miles to right on Haliburton Street. Look for signs the day of the sale.

Real Estate: This metal building includes a large, 2 bedroom, 1 bath apartment with a large living room and a separate outside entrance. Included are two 10'x8' overhead garage doors, four 10'x10' overhead garage doors, an office, lounge, three divided shop areas with floor drains, exhaust fans and heated concrete. Shop #1 is 31.5' x 24', shop #2 is 40' x 40' with a floor drain and shop #3 is 40' x 40' with a floor drain, and insulated garage doors with windows. The back room is 46' x 20' with a 4' x 8' storage closet. The office is 11' x 16'

The real estate will sell promptly at noon. If you would like to schedule your personal showing, please call Scotty at 573-356-4405.

**See terms and conditions for purchase of real estate sale below.*

DOWN PAYMENT: 10% of the contract purchase price will be due upon acceptance of the Sales Contract. Personal or Cashier's Checks will be accepted. This is "AS IS, WHERE IS" and is non-refundable. CLOSING: Closing shall be within 30 days of the auction date.

Machinery and Equipment: South Bend 44" metal lathe bench mounted; South Bend 44" metal lathe with base; Bridge Port milling machine with digital readout, series 1, 2 HP, 3 phase; Hamach metal cutter, 64" thread, 220 volt; Chicago Industrial flow medal drill press (G-14); metal sheathed wheels; machinist cabinet; MORE LISTED ON WEBSITE.

Tools and Miscellaneous: Homemade two tier tool chest; variety of hand tools, includes S&K; various metal pieces including sheet goods; parts washer; roll around industrial carts; MORE LISTED ON WEBSITE

Furnishings and Household Items: Absocold dorm style mini fridge; glass top patio table and 4 chairs; MORE LISTED ON WEBSITE


Antiques and Collectibles: antique China hutch; collection of Fiesta ware; ornate display cabinet; Santa Clause figurine collection, 18"-24"; antique oak drop front secretary; oak roll top desk; MORE LISTED ON WEBSITE

Tractor, Mowers, Etc: John Deere utility tractor, gas, turf tires, 3 point hitch, no rear hydraulics, shows 7,255 hours; Huskee 18.5 HP 46" cutting width; Homelite 3100 PSI 2.7 GPM gas pressure washer with Subaru engine; propane BBQ grill; 26 gallon vertical electric air compressor; 3 point, 5" blade; reversible scoop; Rubbermaid yard cart; leaf blowers

Sporting Goods: Narinco 1911, 45 ACP with box; Fabrique Nationale D'Armes, Browning patent 380 (44719A); MORE LISTED ON WEBSITE

There will be many more items at this auction too numerous to mention.

SEE MORE PHOTOS ON SCOTTY'S WEBSITE



573-356-4405

Michael Cunningham 660-651-2288 • Paxton Pittman 660-346-1956
WWW.SCOTTSAUCTIONSERVICE.COM

AUDRIAN COUNTY AUCTION

Friday, August 12th at 1pm

Small animal auction has been consigned.

32 EWE Lambs born in March 2022

Folks if you are looking for a herd for reproduction, this will be a GREAT Breeding Stock. Nice Lambs!!

- 200 Laying Hens • 20 Pegions •
- Rabbits, Ducks, Guinea's and much more •



Freman Gingerich
2620 Aucrain Rd #389 • Mexico, MO 65265
Call Kevin for more information 573-641-2203

Shelbyville Real Estate Auction

Tuesday, August 9, 2022 at 5:00 p.m.
Owner: Arment Family


Directions: 301 East Main Street, Shelbyville, Missouri. From State Highway 15 in Shelbyville, turn East on Main Street to auction location. Look for signs the day of the auction.

Real Estate: We will be selling at auction this 4 bedroom, 1 bath home. The home has a large kitchen with plenty of cabinet space and a large laundry room. There is new flooring in several of the rooms. Included are a newer outside furnace and central air, new vinyl windows and a hot water heater that is 1 1/2 years old.

The real estate will sell promptly at 5 PM. If you would like to schedule your personal showing, please call Scotty at 573-356-4405.

**See terms and conditions for purchase of real estate sale below.*

DOWN PAYMENT: 10% of the contract purchase price will be due upon acceptance of the Sales Contract. Personal or Cashier's Checks will be accepted. This is "AS IS, WHERE IS" and is non-refundable. CLOSING: Closing shall be within 30 days of the auction date.



573-356-4405

Michael Cunningham 660-651-2288 • Paxton Pittman 660-346-1956
WWW.SCOTTSAUCTIONSERVICE.COM

Estate Auction of Rex and Patty Deiters

August 13th 10 am • 13292 50th St Ottumwa, Ia

John Deere MC Crawler restored, John Deere 60 restored, John Deere B restored, John Deere hi box steel wheel wagon restored, John Deere pull type plow restored, John Deere single row disc restored, John Deere 2 row planter restored, 2 Deere 140 lawn mowers, Deere utility cart, Deere 2 row disc, antique Deere tractor umbrella, rolling Deere tool box, Deere wrenches, running gear, chisel plow, Die cast items to include precision Deere 4020 w/ picker, precision barge wagon and precision Deere combine, old Deere planter boxes, several old time farm machinery parts, likely more Deere items as well, Rex was a Coleman and RV dealer so there will be Coleman items to include lanterns, tables and chairs, wooden sign, globes, ip tanks and lantern parts, as well as RV parts, Antiques to include: crocks, 3 and 5 gallon Western crocks, Western crock churn, wall telephone, rare Charter Oak wooden buggy seat, 50 gallon wood barrel, hay harpoon, copper boiler, rare metal and wood pulley, buggy wrenches, Maytag motor, DX grease can, cane bottom chairs, 5 gal oil cans, iron baby bed, hand tools, check wire, English biscuit cabinet, galvanized sprinkler cans, sewing machine bases, 1 bottom pull type plow, wood and steel wheelbarrow, Aladdin lamps. Household: There are multiple bedroom outfits, several pieces of furniture of all kinds, outdoor furniture, like new large chest deep freeze, Futon, floor safe, rocking chair, clocks, sewing items, canning jars, 1950s table, normal run of household items. Tools/Shop: Log chains, hand tools, power tools, storage cabinets, gondola shelving, file cabinets, nuts and bolts, 2 gravity fuel barrels on stands, jacks, tool boxes, 3/4" socket set, machinist tools, ext ladder, Lincoln welder, 2 air compressors, commercial type band saw and Sharpal sharpener, miter saw, tools of all kinds. Folks there is a lot of stuff and no way near all of it advertised. Come to spend the day, as the auction will be very large. Food and restrooms available. Check out pictures and full listing on our Facebook page.



KRIS ALTISER
660-626-4960

SEE OUR FACEBOOK PAGE FOR PHOTOS

Davis County Consignment Auction

AUCTION

Location: Drakesville Park North edge of Drakesville, IA

Saturday, August 13th 2022 @ 9:30am

MACHINERY: Farm Giant 3pt cart•2-fore carts one w/ shafts•wagon gear on steel•box wagon on steel•JD 953 running gear•Kewanee 500 50" elevator w/ drag•Kewanee 40" elevator w/ drag•Kewanee 38' elevator w/ drag•Ottawa 38" elevator•MC 200 manure spreader (needs work)•MC 200 manure spreader for rebuilding•JD 820 moco haybine•JD 912 haybine

BUILDINGS & BUILDING MATERIALS: 8x10 portable chicken coop w/ roof•9x11 portable chicken coop w/ roof•113 pieces 17'6" burnish slate #1 new roof metal

SHOP & FARM ITEMS: Craftsman 7 drawer rolling tool box•Homak double rolling tool box (new)•rolling tool boxes•grinder w/ engine•PEC clutch

FARM & LIVESTOCK RELATED ITEMS: Agramatic small square bale chop-per•2-8x18 cattle shades on skids•sheep/goat tilting trim chute•400lb hog scales

ENGINES, LAWN & GARDEN ECT: Country Clipper Charger 52" commercial w/ joy stick•Toro personal pace 21" walk behind mower•Snapper LT200 42" lawn tractor•Snapper 52" 23hp hydro walk behind mower•Dixon 42" mower•Wright stand on mower•Ferris 52" walk behind mower

GUNS & SPORTS RELATED: Baikal 12 ga, 2 3/4"•Browning A5 magnum 12 ga (Belgium made)•Rock Island bolt action 22

portable insulated building, 12x14 plus 4' porch, vented gas heater, 2 cabinets, paneling on walls, vinyl plank flooring

HORSES, BUGGIES & RELATED ITEMS
5 yr old Jersey cow, fresh 6 weeks, halter broke, great family cow•6 week old Jersey calf

HOUSEHOLD HOOSIER CABINET

lots more items online at www.foxauctionservice.com

JR. (ALLEN) FOX: 660-341-1453
WILSON FOX: 660-216-9227

UPCOMING LAND & REAL ESTATE AUCTIONS



McAfee Auction Service, LLC
 375 S Johnson • Kahoka, MO
 660-727-3796
 www.mcafeeauctionservice.com

Clark County, MO LAND AUCTION

Sale conducted at the CARE Building
 located at 451 N. Vine Street, Kahoka, MO

152 +/- ACRES/ 2 TRACTS

Sect. 33, Twp 65N, R9W and Sect. 20, Twp 64N, R9W

**Thursday,
 August
 11TH
 at 6 PM**

**Productive Tillable
 Crop Land &
 CRP Income**

KENNETH "GALE" ELLIOTT ESTATE



McAfee Auction Service, LLC
 375 S Johnson • Kahoka, MO
 660-727-3796
 www.mcafeeauctionservice.com

Clark County, MO LAND AUCTION

Sale conducted at the CARE Building
 located at 451 N. Vine Street, Kahoka, MO

74 +/- ACRES/ 1 TRACT

Lying in Sect. 33, Twp 65N, R9W

**Thursday,
 August
 11TH
 at 7 PM**

**Open Tillable Land
 CRP Income
 Hunting**

MARK E. & CANDICE J. HUMES TRUST



McAfee Auction Service, LLC
 375 S Johnson • Kahoka, MO
 660-727-3796
 www.mcafeeauctionservice.com

Clark County, MO LAND AUCTION

Sale conducted at the CARE Building
 located at 451 N. Vine St. Kahoka, MO

110 ACRES/3 TRACTS

Lying in Section 26, Twp 64N, R8W

- Tillable Cropland Acres
- CRP Income
- Recreational Lake
- Building Sites

**Tuesday,
 August
 30TH
 at 6 PM**



JUDY KLEINE, SELLER



McAfee Auction Service, LLC
 375 S Johnson • Kahoka, MO
 660-727-3796
 www.mcafeeauctionservice.com

Clark County, MO LAND AUCTION

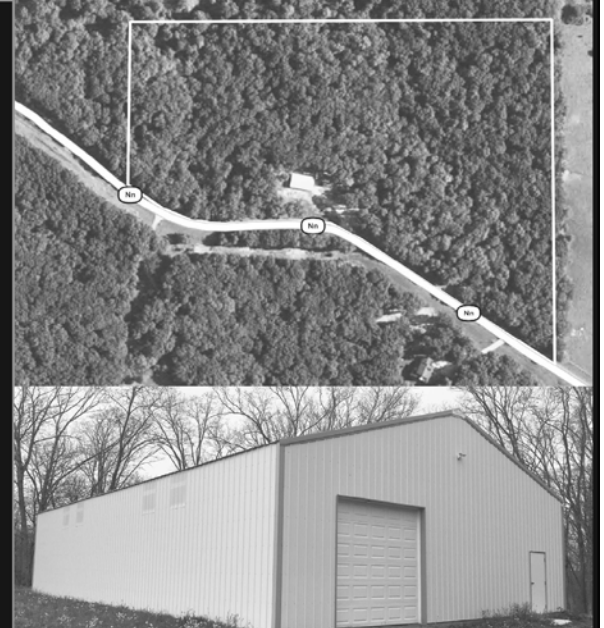
Sale conducted at the CARE Building
 located at 451 N. Vine Street, Kahoka, MO

21 +/- ACRES/ 1 TRACT

Lying in Sect. 23, Twp 66N, R8W Clark County, MO

- Excellent Building Site
- Established Utilities
- Shop Building
- Hunting

**Thursday,
 September
 1ST
 at 6 PM**



DAN LAGE ESTATE



McAfee Auction Service, LLC
 375 S Johnson • Kahoka, MO
 660-727-3796
 www.mcafeeauctionservice.com

Clark County, MO LAND AUCTION

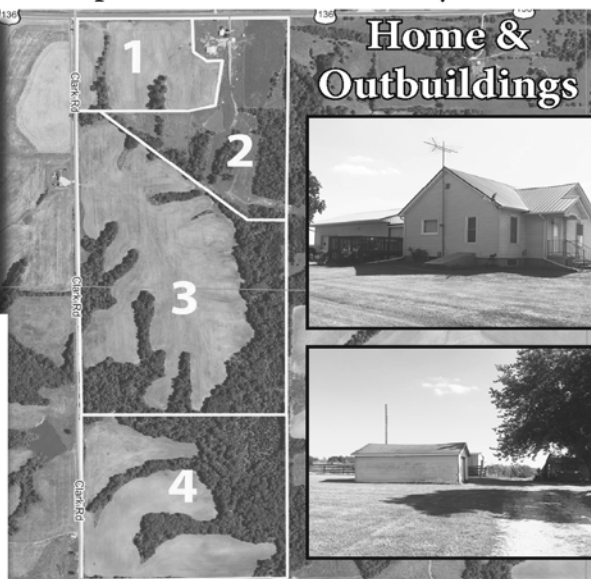
Sale conducted at the VFW
 located at 123 W. Monroe Street, Memphis, MO.

217 ACRES/4 TRACTS

Lying in Sect. 7 and 18, Twp 65N, R9W Clark County, MO

- Tillable Cropland
- Grassland
- Recreational Hunting

**Thursday,
 September
 8TH
 at 6 PM**



THE FAMILY OF TERRY JONES, SELLERS

**LOOKING TO SELL
 YOUR LAND OR
 MACHINERY?**

**LET OUR MOTIVATED
 STAFF WORK FOR YOU!**

OFFICE: 660-727-3796

MONTY: 660-341-7412

**ADDITIONAL DETAILS,
 PHOTOS & AUCTIONS
 ONLINE!**



Clark County, MO LAND AUCTION

THURSDAY, AUGUST 11TH - 6 PM

Sale conducted at the CARE Building
Located at 451 N. Vine St. Kahoka, MO

152 ACRES/ 2 TRACTS

**TIMED ONLINE ONLY
MACHINERY AUCTION**

**LOTS START ENDING
THURS AUGUST 11TH AT 10 AM**



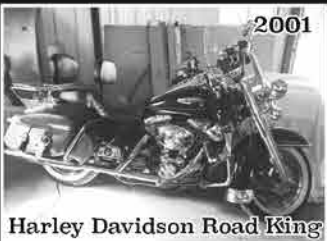
2012

Westernstar Glider Kit



1972

Sundowner Beechcraft



2001

Harley Davidson Road King



2014

Ram 2500 Cummins



2013

Drop Deck



JCB 1400B



Snap on Tools & Chest



JD 4020

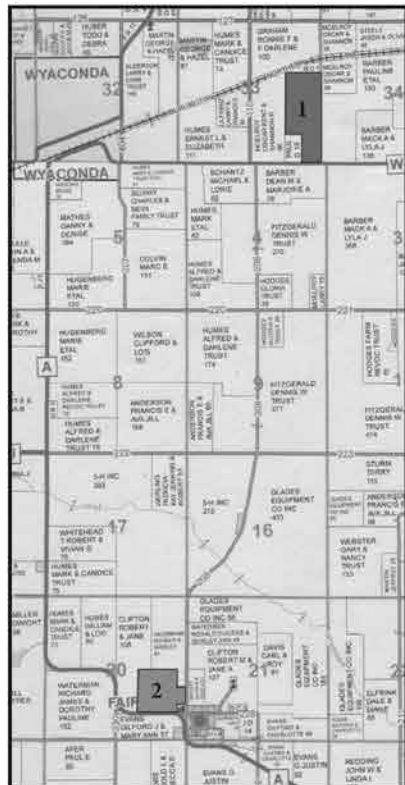
**COMPLETE DETAILS ONLINE!
BID NOW!**



Tract 1



Tract 2



**GENERAL
INFORMATION**

Elliott's tract 1 is generally located 1 1/2 mile East of Wyconda, MO on Hwy. W. Tract 2 is located on the N.W. edge of Fairmont, MO. Tracts offer open tillable land, CRP income, wooded draws and building sites. Lying in Section 33, Twp. 65N, R9W and Section 20, Twp. 64N, R9W Clark County MO.

TRACT 1: 92 ACRES

- Offers 78.77 open cropland, currently 20.09 in production and sells subject to current row crop tenant, Jason Steele, until after fall harvest. 58.68 acres enrolled in new CRP contract 10/1/21 - 9/30/31 paying 144.09 PA total payment of \$8,455.00 per year.
- Successful bidder will receive the prorated portion of CRP income. The successful bidder will receive 1/2 of the cash rent (fall payment of \$1500) on tillable land from tenant 11/15/22.
- Sells subject to terms of CRP contract.
- Feel free to contact the Clark County Farm Service Agency @ 660-727-3364 for options of buying out new contract if desired.
- Access from Hwy. W running along the South side.
- Predominant soil types: Armstrong and Adco.

TRACT 2: 60 ACRES

- Offers 40 acres of open tillable cropland, sells subject to current row crop tenant, David Schmitz, until after fall harvest. Balance in wooded draws, building sites.
- Possession after fall harvest. The successful bidder will receive 1/2 of the cash rent (fall payment of \$3000) on tillable land from tenant 11/15/22.
- Access from Hwy. A running along the South.
- Soil types: Armstrong and Adco.

TERMS & CONDITIONS

Tracts will be sold on a price per acre basis, based on assessed acres. Tracts will be offered through the method of "Buyer's Choice", giving the successful bidder the opportunity to take any single tract or both tracts in their entirety. Tracts DO NOT sell contingent to financing or any other buyer contingencies. Immediately following the bidding, the successful buyer(s) will be required to pay 10% down evening of sale payable to Scotland County Abstract and Title Company Escrow and sign into a written contract with the estate. The balance of the purchase price will be due at closing on or before September 13, 2022. Tracts sell subject to row crop tenants. Possession after fall harvest. Tract 1 sells subject to terms of CRP contract. Real estate conveyed subject to any easements of record in effect at date of closing. A seller's policy of title insurance in the full amount of the purchase price will be provided by the estate. All additional closing cost will be divided in equal shares between the buyer(s) and seller. Closing conducted by Scotland County Abstract and Title Company located at 205 E. Monroe Street, Memphis, MO 63555. All lines on maps are for identification purposes only. These lines may or may not be accurate. Sale contracts and title work will be available day of sale for review.

AUCTIONEER'S NOTE: Looking for investment income producing tracts or building site? Both tracts have hwy. frontage. Prospective buyers are welcome to view the tracts at their own leisure. Not responsible in case of accident. Announcements made sale day take precedence over any advertisement. Terms cash or check with proper ID. The above information is believed to be accurate; however, no liability for its accuracy, errors or omissions are assumed by the seller or auction service.

KENNETH "GALE" ELLIOTT ESTATE

Janice Grosenkemper, Executor/ John C. Slavin, Rep Attorney/ Closing Conducted by Scotland County Abstract and Title

McAfee Auction Service, LLC

660-727-3796

www.mcafeeauctionservice.com



McAfee Auction Service, LLC

375 S Johnson • Kahoka, MO

660-727-3796

www.mcafeeauctionservice.com

LIVE ONSITE PERSONAL PROPERTY

AUCTION

SATURDAY, AUGUST 20TH - 10 AM

SALE CONDUCTED AT 23001 E. MAIN STREET, KAHOKA, MO



Selling JD X500 Multi Terrain Series lawn mower, only 251 hours; Kawasaki Prairie 700 4wd four wheeler; 2001 5'x8' utility trailer; hunting related; few pieces of antique furniture; nice selection of common household furniture, collectibles, stoneware, toys and much more.



**WALTER & PAT LASH AND
VERNA GARRELLS, SELLERS**



McAfee Auction Service, LLC

375 S Johnson • Kahoka, MO

660-727-3796

www.mcafeeauctionservice.com

TIMED ONLINE ONLY ESTATE AUCTION

**LOTS START CLOSING AT 10 AM
THURSDAY, AUGUST 25TH**

PICK UP LOCATION: 707 N MARTIN AVE, KAHOKA, MO



Selling a nice selection of household furnishings, collectibles & lawn related. View catalog & terms on our website.



BID NOW!

THE FAMILY OF MAXINE HYDE, SELLERS