



**IT'S FREE**

**EVERY FRIDAY**

**NEMO**  
Trader

701 East LaHarpe St, Suite C,  
Kirkville, MO 63501 • P.O. BOX 809  
660-665-8500 or 660-988-6830  
Our New Email: sales@nemotrader.net

**CALL US FOR YOUR ADVERTISING NEEDS**

**FREE**

NEW EDITION EVERY FRIDAY!  
VOL. 29 • NO. 82 • AUGUST 19, 2022

# NEMO

Trader

**THE NEMO TRADER**  
PO BOX 809 • KIRKSVILLE, MO 63501 • PHONE 660-665-8500  
Web Site: [nemotrader.net](http://nemotrader.net) • Email: [sales@nemotrader.net](mailto:sales@nemotrader.net)

A WEEKLY ADVERTISER SERVING ALL OF NORTHEAST MISSOURI AND THE SURROUNDING AREA

**FARM & RANCH.**  
ELIZABETH GREGORY  
660.621.2136  
[missourihomeandfarm.com](http://missourihomeandfarm.com)

**CENTURY21**  
Lifetime Realty  
Suite A  
Kirkville  
660.665.5678

**SCOTT'S AUCTION SERVICE**  
FARMS-LAND  
REAL ESTATE  
MACHINERY  
ESTATE SALES  
573-356-4405  
[ScottysAuctionService.com](http://ScottysAuctionService.com)

**Creative Outdoor Solutions**  
Trimming, Mulching, Planting, Hard Scaping, Fall Clean up and More  
**FALL LANDSCAPING SERVICES AVAILABLE**  
Give us a call at 660-342-7064

**HORIZON CREDIT UNION**  
701 S. Baltimore • Kirkville  
310 N. Missouri St. • Mason  
660-385-8205  
Easy Application Process Online  
[www.YourHCU.com](http://www.YourHCU.com)

**NEED A CAR TO GET TO WORK?**  
THERE'S HELP ON THE HORIZON!!  
CAR LOANS FOR THOSE WITH  
\*POOR CREDIT \*NO CREDIT  
\*DIFFICULT CREDIT SITUATIONS  
\*REWARD BASED RATES FOR EXCELLENT CREDIT  
Competitive Interest Rates  
Incentive for Credit Improvement

**CUSTOM CHOPPING**  
ALL TYPES OF FORAGES  
PRESERVATIVE AVAILABLE  
Devon Zimmerman  
660.464.1324

**John Deere 4720 tractor,**  
MFD, 58 hp,  
hydrostat, cab/AC,  
400CX loader, air  
seat, rear remotes,  
only 960 hrs,  
only **\$39,900**  
**660-457-3700 • Judd Motors**

**CALL TODAY TO RESERVE YOUR SPOT**

*Kirksville, Missouri*  
**KIRKSVILLE LIVESTOCK LLC**

24295 Benton Road \* P O Box 242 \* Kirksville, MO 63501

[www.kirksvillelivestock.com](http://www.kirksvillelivestock.com)

Special Feeder Cattle Sale

Friday, August 22, 2022 • 11:00 a.m

- Riley Rains - 130 BBWF few mixed str, 2nd round shots, 120 days weaned, 650-775#
- Harold Harden - 67 Red & mixed str, 2nd round shots, 800-825#
- Roger Thompson - 31 RRWF str & hfrs, 3rd round shots, 100 days weaned, 600-700#
- Paul Christian - 65 Blk some Red str & hfrs, 1 round shots, 100 days weaned, 725-825#
- Larry Snow - 14 Blk str & hfrs, 1 round shots, 45 days weaned, 500-600#
- John Robinson - 60 Blk str & hfrs, 1 round shots, 775-825# Breeding quality hfrs available

More listings by sale day • Check website for updated listings: [www.kirksvillelivestock.com](http://www.kirksvillelivestock.com)



We are open on Sunday to Receive Your Livestock  
"Your Business is Very Much Appreciated"  
"Proud to Serve Area Livestock Producers"  
For more information or Someone to  
Look at your Livestock Phone:

- Patty Foster, Office Manager - 660-665-9804
- Chuck Ambrosia - 660-342-3530 Luke West 620-215-5770
- Mark Herbold - 515-720-8667 - Al Ashmead - 660-216-8730
- Jeremy Jarman - 660-341-9879 - Daniel Smith - 660-341-8396
- Caleb Randolph - 641-919-8539 - Doug Fleshman 660-626-7148

66174p

# WE GOT YOUR NEEDS COVERED!



**FARM TARPS TRUCK TARPS**  
**HOOP BUILDING COVERS**

# Troyer

## TARP MFG.

### 660-486-3301

20264 STATE HWY. VV • ETHEL, MO 63539

631236

**Equipment & Supplies**

Farmall 656, gas, factory wide front, flat tops, good TA, fast hitch, 16.9x38, very straight and original, 4900 hours, with hydraulic bucket loader, \$6900. 217-257-1385

Case 4800 field cultivator, 28', very good, \$7950.00. 660-265-5777.

Bushhog FTH 720, 6' finish mower, 3 point, 540 pto, always shedded, good paint, \$950.00. 217-257-1385.

Ford 4000, 1963, 4 cyl, 55hp, 5 speed, ps, 3 point, live PTO, complete tune up including carb rebuilt, battery, great acreage tractor, \$3,500.00. 217-257-1385.

10' AC grain drill outboard wheels, Williamstown, MO. \$2750.00. Text and i will call 217-653-7100. Planted wheat food plots.

John Deere 1025R mower, 4 WD, 100 hours, with 48" till-\$17,000.00, without tiller-\$15,000.00. 660-265-5777.

John Deere MX7 7' brushhog \$3800.00; 6' brushhog \$400.00; John Deere 1008 10' brushhog \$3000.00; Bushog 2615 15' \$3000.00. 573-470-3358.

Kewanee 14' disc, cylinder, used last fall, \$700.00, AC 3 bottom snap coupler plow, \$200.00, Kewanee 8' snap coupler blade, \$350.00. 217-257-1385.

New Holland 475 manure spreader, 540 pto, outstanding floor that is original. ready to use, metal sides. \$3200. 217-257-1385.

Kinze six row conservation planter. Totally redone, \$7500.00. 660-265-5777.

**FOR SALE**  
**All Sired Angus Bulls,**  
**14 & 18 Months Old.**  
**Harold Trump**  
**660-341-5730**

**Equipment & Supplies**

Allis Chalmers D14, narrow front, very straight, original, non running from setting, \$1250. 217-257-1385

100 Gallon fuel tank manual hand pump with filter, \$350; IHC 5 1/2' pull type rotary mower, cylinder 540 PTO, \$425. 217-257-1385

New Holland #56 bar rake, 8 1/2' working width, front dolly wheels, stored inside. \$1400. 217-257-1385.

Sidewinder 15' batwing brushhog \$2500.00; Bushog 2615 batwing \$3000.00; John Deere 10/ brushog \$3000.00; 6; brushog \$400.00; John Deer MX7 \$3800.00. 573-470-3358.

20' disc, \$4,000.00. 660-265-5777.

**Cattle**

For Sale: 12 head of p3 Angus cattle that are older but in great condition. They will start calving in October. Call 660-265-6772 for more information

**Equipment & Supplies**

2-14.9 R28 John Deere tractor wheels and tires. Cylinder bars for JD 7722 combine. 540 PTO shaft for 566 JD baler. 1-18.4 R26 tire. 660-216-5535.

*"I appreciate the value of hard work, and I know the value of Bobcat equipment."*  
**Justin Moore**  
*Country Music Artist*

**EVEN THE RADIO IS TOUGH.**

**BOBCAT.COM**

Whether you're number one on the charts or number one in the compact equipment industry, performance matters. Quality matters. And Bobcat® equipment powers your outdoor lifestyle with a workstyle that never lets up. Visit your dealer to find the machine that's right for you.



*One Tough Animal.*

**Hannibal Tractor Brookfield Tractor**



573.221.8212



660.258.7228

[www.QuincyTractorLLC.com](http://www.QuincyTractorLLC.com)

Bobcat®, the Bobcat logo and the colors of the Bobcat machine are registered trademarks of Bobcat Company in the United States and various other countries.

©2022 Bobcat Company. All rights reserved. 16819315

**NEW COMPACT TRACTOR**

- HANNIBAL | BOBCAT CT1021 | 2 RANGE HYDROSTAT, FL6 LOADER WITH BUCKET, SUBCOMPACT TRACTOR ROPS..... CALL
- HANNIBAL | BOBCAT CT1025 | 2 RANGE HYDROSTAT, FL6 LOADER WITH BUCKET, SUBCOMPACT TRACTOR ROPS..... CALL
- HANNIBAL | BOBCAT CT2035 | 35HP, FL8 LOADER AND BUCKET, 3 RANGE HYDRO..... CALL
- HANNIBAL | BOBCAT CT4058 | 58HP, 3 RANGE HYDRO WITH FL9 LOADER AND BUCKET..... CALL
- HANNIBAL | BOBCAT CT5555 | 55HP, EHSTAT, LOADER, 3 RANGE HYDRO ..... CALL

**NEW COMPACT TRACK LOADER**

- BROOKFIELD | BOBCAT T770..... CALL
- BROOKFIELD | BOBCAT T76..... CALL

**USED COMPACT TRACK LOADERS**

- Quincy | New Holland C237 | 2018, 280 HRS, EH CONTROLS, HIGH FLOW ..... \$64,000
- Quincy | New Holland C232 | 2014, 1168 HRS, STD FLOW ..... \$43,000
- Hannibal | John Deere 250 | 800HRS, SERIES 2 SKID STEER LOADER..... \$19,900
- Havana | New Holland L228 | 2019, 125HRS, CAB ..... \$49,500
- Havana | New Holland L232 | 130HRS..... CALL

**Hannibal Tractor Brookfield Tractor**



573.221.8212



660.258.7228

[www.QuincyTractorLLC.com](http://www.QuincyTractorLLC.com)

661557z

**BIN PACKAGES ON HAND** **READY TO SHIP**



**48X9 55,000 BUSHELS (1 LEFT)**  
**48X12 70,000 BUSHELS (2 LEFT)**

**GRAIN BINS SUPPLY** **CAIRO, MO**  
 "The Grain Bin People" **GBS (660) 263-6700**

**BUCKMAN MACHINERY, LLC**  
**573-881-3557**

**John Deere 3020 D**, 1968, powershift, 9000 hrs, very straight, 90% rubber,..... **\$12,500**  
**John Deere 4430**, QR, 65% rubber, 6500 hrs showing, dual hydr, 6 out of 10..... **\$14,950**  
**John Deere 709 or 609 Brush Hogs**, 3 pt, 540 PTO, Cat II, choice,..... **\$1,750**  
**John Deere 3950 Silage Chopper**, used this year, very good condition, a green 2 row 30" corn head, low acres, 5.5'pick-up header,..... **\$5,500**  
**John Deere 1008 Brush Hog**, 3 pt, 10", 540 PTO, good..... **\$4,750**  
**John Deere 3020 Gas**, powershift, 90% big rubber, dual hydr, 4100 hrs, one owner, really nice..... **\$9,500**  
**IHC 484 Utility Diesel**, 90% rubber, 4400 hrs and Freeman Loader,..... **\$6,750**  
**John Deere 5075 E, MFWD, CAH**, with JD H240 SL Loader, 940 hrs, new engine, same as new,..... **\$39,500**

**Loaders & Duals available for many**

**Equipment & Supplies**

JD 66 silage blower, 82 model, has shaker, 7ft extension pipe, 540 PTO, \$1,000.00. 641-777-9775

Are you having a garage sale or rummage sale? Call us to advertise. 660-665-8500.

**Equipment & Supplies**

Case 1840 skid loader, 63" smooth bucket, diesel, 54 hp, auxiliary couplers, 4926 hours, 10-16-5 tires. 785-893-2706.

Call about our classified ad specials. 660-665-8500.

*Your Local*  
**FARM SUPPLY SOURCE**  
 NUTRITION • MEDICAL • FARM • PET • APPAREL

*Featured Product*



**10' BUNK FEEDERS**  
**\$15 OFF**  
 THIS MONTH

Hometown Animal Health has provided quality products, expert knowledge, and friendly customer service to northeast Missouri and surrounding areas. We are a full-service nutrition, medical, and farm supply source carrying complete lines of animal feed and supplies, farming equipment, agricultural parts, lawn and garden tools, work apparel, and much more!"



Feed • Medical • Farm & Pet Supplies • Footwear & More

website: [hometownanimalhealth.com](http://hometownanimalhealth.com)

**660-465-2967**

18743 US Hwy, 136 Memphis, MO 63555  
 "on Hwy 136 west of Memphis"

Monday-Friday 8pm to 5pm  
 Saturday 8am to 1pm

**Equipment & Supplies**

**Buckman Machinery**



**MF 235 Diesel**, 3000 hrs, restored, new rubber, hydrvalve, sharp looking, \$5,750



**John Deere 4430**, Northern Illinois one owner, 76320 hrs, dual hydr, ft. wts, rear wts, front auxiliary tank, very nice as you can find. **\$30,500**



**Woods 3180 Batwing**, 15', 1000 PTO, laminated tires, chains, field ready **\$12,500**



**Ground Driven NI/JD Manure Spreaders**, refurbished, **\$1,750 choice**



**John Deere 7230** power quad, reverser, JD 741 Loader, 7400 hrs, above average condition, **\$69,500**



**John Deere 4020**, 1966, powershift, 85% rubber, with JD 158 Loader, QT bucket & bale spear, one owner, 9017 hrs, **\$18,500**



**John Deere 5603**, 2008, MFWD & 542 Loader, reverser, dual hydr, joystick, 2035 hrs. **\$49,500**



**Bush Hog 12715 Legend**, bat wings, 1000 PTO, 4 yrs old, in the field now, **\$13,500**

**573-881-3557**

**NEMOTRADER.NET**

**Golden Grain Bins-Spring Discount**

Grain Bins		Floors w/12" Supp. & Flashing	
18'x18'	4,195bu. \$ 7,398	18'.....	\$2,065 30'.....\$ 5,764
27'x21'	11,265bu. \$14,850	21'.....	\$2,824 36'.....\$ 8,211
42'x24'	32,245bu. \$34,617	27'.....	\$4,710 42'.....\$11,182



**GMLS Industries, Inc.**  
 PH: 660-699-2179 or 620-983-2136  
[www.gmlsindustries.com](http://www.gmlsindustries.com)

**Animal Housing, Hay Storage & Much More!!**



**Skylight Fabric Structures**  
 20749 State Highway VV  
 Ethel, MO 63539  
**660-486-3250**  
**833-482-8862**

**BWS**  
**Brad's Welding Shop**  
 12673 Almond Ave.  
 Marceline, MO 64658  
**660-376-1158**

- Hay Liner Trailers
- Red line Harrows
- Continuous Panels
- Bale Feeders
- Arrowquip Cattle Equipment

[bradsweldingshop.com](http://bradsweldingshop.com)

**Equipment & Supplies**

Brand new 2022 Carry-on, 76" wide x 12' treated lumber utility trailer, 3,500 pound axle, 2990 pound GVWR, 49" rear ramp gate, 15" tires on white mod wheels and lockable storage box, \$2300.00. Accelerators since "1974", Kahoka, MO. 217-257-1385.

Vermeer R23 twin V rake, hydraulic drive, manual fold, adj. raking width 18'x23', ready to use \$4500. 217-257-1385

WANTED TO BUY: Farm Machinery and Estates. Call James L. Johnston. 573-473-4904

250 Gallon water tank, fits pickup bed, sets over wheel wells, with shut off valve. \$245. 217-257-1385

2 sets draft work harness, leather and several collars and other harness parts. All in good condition. 660-342-5314.

**Hay/Feed/Seed**

Trefoil, clover, brome and timothy mixed Hay, 4x5 net wrapped, easy to haul, \$60/bale, loader and delivery available. Kirksville Area 660-988-4176

Small bales straw, \$5.00, also 4x5 bales straw, \$30.00. Two tool boxes, \$50.00 each, wood lathe. 660-342-5314.

**Livestock**

Seven 3/4 Boar doelings, dob April - May, \$275.00 take all, \$300.00 choice. Albia, IA. 641-680-2732.

Need something? Let us help you. You can advertise that you are looking for a special item. Call 660-665-8500 for more information.

**Livestock**

Fish for stocking ponds. Catfish, Grass Carp, Crappie, Bluegill, Redear, Bass and minnows. Heindselman Family Farms. Call Greg 660-341-5692.

**MERCHANDISE**

**Antiques & Collectibles**  
 Two John Deere number 97, chad little race cars. 660-341-2837.

**Appliances**

GE 37" small chest freezer, \$150.00, 6 vintage barrel style kitchen chairs, \$9.00 each, 2 tractor rims fire pit only, \$15.00 each. 217-257-1385.

**Building Supplies**

Roof Trusses 2', 4', or 8' on center up to 80' wide Call with your size and quantity and we'll give you a quote. Shelby Supply 660-299-0615

**Premium Metal Roofing**



**AW Metal Inc.**  
**Metal Roofing Headquarters**  
 641-664-3990 • [ammetal.net](http://ammetal.net)

**Edina Livestock Sales**  
 Edina, Missouri

**Friday, August 19th**  
 Special Feeder Calf Sale

**Friday, August 26th**  
 Special Feeder Calf Sale

To Consign For Any or All Sales or For Information Call:  
 Owner - Kevin Strange • Cell: 660-341-9974  
 Ryan Strange • Cell: 660-341-9721  
 Sale Barn: 660-397-9999

**Field Reps:**  
 Bill Tom Hall 660-342-5420 Mike Bronestine 660-341-9965  
 Jason Bichsel 660-216-0373 John Powell 660-341-1717

**GET FREE GIFTS WITH PURCHASE OF BERNINA 570 QE!**

Made especially for quilters

- Enjoy superb fabric feed
- Handle big quilts with ease
- Your threads are cut automatically
- Precise and perfect stitches
- Patchwork foot #97 included

**FREE GIFTS WITH PURCHASE**  
Value up to \$1352.95

**Green Acres Sew & Vac**

221 W Grand Ave. Memphis, MO 660-465-7131 greenacressewvac.com

Valid through August 31, 2022. See store for full details.

Building Supplies

**LANCASTER LUMBER INC.**

Lancaster, MO.  
1-800-424-5071  
LAN-DOW BUILDINGS  
www.lancasterlumber.com

Free Estimates CALL TODAY!

**Rooferman LLC.**  
302 Third Str. Moberly, MO 65270  
660-833-9162  
owner: Wade Sanderson

**LAN-DOW BUILDINGS**  
"We Build To Suit Your Needs"  
"Custom Built"  
Pole Barns • Garages • Utility Buildings  
"H" Don or Dick Middleton  
**Memphis Lumber Co.**  
1-800-337-5858 • 660-465-8595  
Fax: 660-465-8596

Building Supplies

Insulated Vinyl windows in stock up to 3'x5' with Lowe. Shelby Supply 660-299-0615

Electronics

2 flat screen TV's. 1-16" Emerson, 1-28" Sceptre that has DVD built in. 1 roll 5' window film. 779-706-0365.

Hobbies

Two John Deere number 97, chad little race cars. 660-341-2837.

Lawn & Garden

Craftsman 48" GT3000 Riding lawn mower, Kohler engine 23.5 HP, great condition, \$800. 217-242-1643

Older model, 50's-60's, John Deere riding lawn mower and Cub Cadet. Serious calls only. 779-706-0365.

Husqvarna Z560 zero turn, Yamaha motor, 30 hours, like new, \$8500.00. 660-265-5777.

NEMOTRADER.NET

Flea Markets

**FREE PUBLIC Admission**

**FLEA MARKET**

**MINER HILL SWAP MEET**

2022 DATES  
**Aug 26 & 27.**

Sept 23 & 24  
Oct 28 & 29

**ANTIQUE • GUNS • RV & AUTO PARTS**  
**BAKED GOODS • CRAFTS**  
**UNIQUE JUNQUE • MUCH MORE**

1310 N. Missouri Ave • Marceline, MO 64658  
660-375-1212  
Email: minerhillc@yahoo.com  
**www.minerhill.com**

Great Food  
Sandwiches, French Fries, Ice Cream Cones & MORE

50/50 Drawing Friday & Saturday

Clothing

**LOCALLY OWNED & OPERATED!**

**D&J'S**  
SCREEN PRINTING & embroidery studio

**SCREEN PRINTING**  
**EMBROIDERY**  
**SHIRTS + HATS**  
**TROPHIES, AWARDS & PLAQUES**  
**BANNERS**  
**AND MORE!**

660.665.8001  
KIRKSVILLESHIRTS.COM

Pets & Supplies

**HARRISON FISHERY**  
POND & LAKE STOCKING

**HARRISON FISHERY, INC.**  
IS A FAMILY OWNED AND OPERATED BUSINESS.

**WE STOCK MOST SPECIES FRESHWATER, GAME & BAITFISH**

**CONTACT US FOR A PRICE & DELIVERY**  
**660-423-5482**

**www.harrisonfishery.com**

Pets & Supplies

AKC Standard Poodle puppies, reds, blacks, chocolates, wormed, shots, health guaranteed, born 6/1/22, \$800. 573-248-7957 Leave Message

NEMOTRADER.NET

Wood & Accessories

Weavers Outside Wood Furnaces, have an assortment of parts, line, and etc. Call 660-423-5242, cell 660-216-9885. Open 6 p.m. - 9 p.m. Monday - Friday, Saturday anytime, call first.

Mobile Homes For Sale

New Mobile Home Stock - just received (5) new units, they gotta go! 573-657-2176 amegamobilehomes.com

TINY HOMES We gottem 573-881-3283

True Modulars 30 to 60 day delivery available, 3 and 4 bedroom. 573-657-7040 chateauhomes.net

ANNOUNCEMENTS

Notices

LOW COST HEALTH INSURANCE Plans for Every Budget Doctor Visits, Prescriptions Use Any Doctor or Hospital Inpatient, Outpatient, Surgery To Find Out More about these Affordable Health Plans Call Jim Minear 800-259-5682

RECREATION

Motorcycles

WANTED TO BUY: Harley Davidson's, any year, any condition, cash money. Days 660-263-1356 or 660-537-0068

Other-Recreation

Food plot, 10' AC drill, 2 boxes, Williamstown, MO. \$2750.00. Text and I will call you. 217-653-7100.

Parts & Services

ATV/UTV Problems? Countryside ATV&UTV Repair in Queen City, MO offers general maintenance, diagnosis, and full rebuild services for ATVs & UTVs. Call 660-956-5409 for a quote today!

Industry

**CONAGRA BRANDS**

Conagra Brands in Macon is now hiring for all shifts, both full-time and part-time positions in Production, Sanitation and Maintenance.

**WEEKLY ATTENDANCE & EMPLOYEE REFERRAL BONUS**

Join the Conagra Brands team in Macon with competitive hourly starting pay of \$18.37 per hour, and an excellent benefit package that includes medical, dental, vision and life insurance.

Salary positions in Sanitation and Maintenance are also available.

Open interviews are conducted each Wednesday in the plant between 9 AM and 11 AM, and other times by appointment.

Apply online at [jobs.conagra.com/careers](http://jobs.conagra.com/careers) and follow the links to submit your application OR text Conagra to 25000.

Services

**fb farmbank**  
Growing Together

Green City Milan Kirksville  
660-951-8430 • 660-951-8432 • 660-951-8431  
www.farmbank.com

City of Novinger  
302 Marion Ave, PO Box 277, Novinger, MO 63559 • 660 488-5383 • cityofnovinger@gmail.com

**REQUEST FOR QUALIFICATIONS**  
**PROFESSIONAL ENGINEERING SERVICES**

The City of Novinger (City) is requesting qualifications for Design, Bidding and Construction Engineering to address water system improvements and a new elevated water storage tank. The project may be funded through a combination of Missouri Department of Natural Resources SFR loans and or Grants as well as Community Development Block Grant, and possibly ARPA funding. Other funding agencies may be involved in the future, but no specific programs outside of the ones listed above have been pursued at this time.

A detailed description of project scope should be requested by email to Jeff Dodson at [cityofnovinger@gmail.com](mailto:cityofnovinger@gmail.com). Questions must be submitted via email by 8:00 am on September 8th, 2022 and will be answered to all known interested firms by 4:00 pm on September 15th, 2022 and will be included in all information requests until the day of submissions.

Qualification information provided to the City shall include:

- The specialized experience and technical competence of the firm with respect to the type of services required;
- The capacity and capability of the firm to perform the work in question, including specialized services, within the time limitations fixed for the completion of the project;
- The past record of performance of the firm with respect to such factors as control of costs, quality of work, and ability to meet schedules;
- The firm's proximity to and familiarity with the area in which the project is located.
- The firm's professional experience in designing systems for water projects.

The above information should be submitted no later than September 20th, 2022 to the attention of Jeff Dodson, Mayor at P.O. Box 277, Novinger, MO 63559-0277.

Once the City selects the most qualified firm based on the above qualification evaluation, an engineering agreement will be negotiated. The engineering agreement may include services other than design, and/or construction management including, but not limited to, assistance with securing project financing, assistance with attaining easements or real property, user rate analysis, geotechnical analysis, surveying, or other services as needed.

The City of Novinger is an Equal Opportunity Employer and invites the submission of proposals from women, Minority, Disadvantaged, and Veteran Business Enterprises.

# Beilstein

## CAMPER SALES

573-655-2254

**CALL US NOW**  
for the best prices...

28248 327th Ave.  
LaGrange, MO • Hwy 61 South,  
4 Miles South of LaGrange, MO

#109692



\$19,995

2022 Keystone Springdale  
Single Axle 1800BH  
Light Weight Easy to Tow,  
Bunks

#108565



\$34,495

2022 Keystone Springdale  
293RK  
Rear Kitchen, Super Slide-Out,  
Queen Bed

#109804



\$21,995

2022 Keystone  
Springdale 2010BH  
Double Over Double Bunks,  
Queen Bed

#109571



\$23,995

2022 Keystone Springdale  
Single Axle 1860SS  
Super Slide-Out,  
Queen Bed, Light Weight

#430102



\$33,995

2022 Salem Cruise  
Lite 28VBXL  
Super Slide-Out,  
2 Queen Beds and Bunks

#089496



\$35,995

2022 Salem Hemisphere  
Hyper-Lyte 25RBHL  
Large Slide-Out, Rear Bath,  
Queen Bed

### Beilstein Camper Sales

[www.beilsteincampersales.com](http://www.beilsteincampersales.com)

Since 1956, family owned Beilstein Camper Sales has provided exceptional value and service to our customers. We feature a wide selection of new RVs from Forest River, Heartland and Keystone. We're on the Avenue of the Saints along side Highway 61, four miles south of La Grange, Missouri. Stop by today to get a great deal!

### Show Me Plumbing Services



- General Mini Excavation & Skid Steer Work
- Livestock Watering
- Waterlines & Sewer Systems
- Residential Services & General Plumbing
- Utility Trenching

Stan Schrock 660-988-1163  
Greentop, MO 660-766-2636

### ATTENTION LAND OWNERS!

**BUYER OF STANDING TIMBER  
OWNER / OPERATOR OF SAWMILL - BUY/CUT LOGS  
CERTIFIED - BONDED - INSURED**



TRI STATE TIMBER L.L.C.  
PH. 660-341-4921 or 660-465-2975  
353 1/2 GRAND AVE. • MEMPHIS, MO 63555

### CUSTOM NO TILL GRAIN DRILLING

SPECIALIZING IN COVER CROPS  
Devon Zimmerman 660.464.1324

660-785-0248  
[www.signatureremodelingkv.com](http://www.signatureremodelingkv.com)  
Residential and Commercial Installation and Service

## LOCAL MATTERS

Please support the advertisers that power your community paper.

NEWSPAPERS  
MATTER  
NOW MORE THAN EVER

Call us for all your advertising needs. 660-665-8500.

### SERVICES

#### Construction-Services

**SPRAY FOAM INSTALLATION!** We install open and closed cell spray foam. Strengthen your building and block drafts! Over 1 Million sq. ft. applied. CONTACT Lester at 641-208-7071, Spray Tex LLC 16302 192nd Street Bloomfield IA 52537

#### Chat/Dirt/Gravel

**DIRT WORK** All types of excavation, reclaiming overgrown fields, including CRP and WRP. Building site preparation, creating new trails and crossings, Food plot development and maintenance. Leveling and grading, wetland construction and maintenance. Pond and lake cleaning and construction. Call for quotes. 660-342-2701

#### Lawn/Garden/Landscape

New 3 pt. tillers, heavy duty, gear driven, 7' to 12' starting at \$4,050. 660-874-4455.

Call about our classified ad specials. 660-665-8500.

#### Miscellaneous

### ROLLINS RECYCLING ROUNDUP!

AUGUST 12TH - 22ND

BROUGHT TO YOU BY  
Community Opportunities, Inc.

RECYCLING TRAILERS WILL BE AT:  
Kirkville  
El Kadir Shrine Club, 2401 S Baltimore Str  
Northtown Shopping Center, North Baltimore across from America's CarMart  
Greentop  
Corner of Main & 6th Streets, (State Hwy K) Near City Hall

**WHAT CAN I RECYCLE?**  
Aluminum Cans  
Newspapers, Magazines & Books  
Sorted Office Paper (nothing confidential)  
Envelopes & Junk Mail  
ALL Cardboard:  
Boxes, Food Containers (frozen, boxed, soda)  
Please break down your cardboard boxes to allow more room for collection!

**MISSOURI CANCER ASSOCIATES**  
George Rae Cancer Center

### Cancer Care Close to Home.

No Referral Needed

MISSOURI CANCER ASSOCIATES  
1982-2022

**We give care.  
We give courage.  
We give hope.**

"I've never felt so comfortable in a medical community as I have with MCA. The system, the process, and EVERY staff member is amazing and always puts me at ease."  
-Madelyn

"Every individual I came in contact with was friendly and caring. I have been to 3 different medical facilities and there is no comparison."  
-Joe

(866) 724-2413 | 603 W Pierce St.  
Kirkville, MO  
[www.missouricancer.com](http://www.missouricancer.com)

# VICTORY

## Metals & Recycling

Kirkville, MO 660-665-8000

[victorymetalrecycling.com](http://victorymetalrecycling.com)

For current scrap prices call or visit our Facebook Page

### ★ Construction/Debris Recycling

Visit Kirkville's construction & debris recycling facility and save trips to the landfill! Take advantage of this service for solid waste removal by bringing your landfill items to Victory Metals C & D recycling facility located at 3602 N. Industrial Rd.

### ★ Roll-Off Container Service

10-20-30-40 Cubic Yard Dumpsters

3602 N. Industrial Rd.,  
Kirkville, MO 63501  
[djanessvmr@gmail.com](mailto:djanessvmr@gmail.com)  
[www.victorymetalrecycling.com](http://www.victorymetalrecycling.com)



**STOMBAUGH ASPHALT**  
 RESIDENTIAL ★ COMMERCIAL  
 ★ PAVING  
 ★ CHIP & SEAL  
 ★ SEALING  
**573-406-8706**



**CELEBRATIONS!**  
**PARTY RENTAL**  
 KIRKSVILLE, MO

FOR RENT

- Tables & Chairs
- Tents • Bounce House
- Cotton Candy Machine & More!

660-626-5162 or 660-665-9380



**LIME SPREADING SERVICE**

Equipped with variable rate

**PEAVLER TRUCKING LLC**  
 Alan Peavler, 660-216-0618 - Jared Peavler, 660-342-7685



**JAGUAR LUMBER**  
 Attn: Land Owners

Buyer of Timber  
 \*All species also Select yard Trees/Logs over 40" diameter,  
 \*Trees are selectively cut to insure optimal Forest Regeneration.

Certified & Bonded | Lavon Gingerich 641-664-2080



**TIMBER MANAGEMENT.**

Purchasing Walnut, Oak, Maple & Other Species

**WE PAY BEFORE WE CUT**

**BONDED & INSURED**  
**641-895-8209** Est. 1968

**NEMO TRADER • Advertise with us TODAY!**  
 Phone: 660.665.8500 • PO BOX 809  
 701 East LaHarpe St, Suite C, KIRKSVILLE, MO 63501



# WE HAVE YOUR DREAM CAR!



**AMERICA'S CAR-MART**  
 Keeping You on the Road  
 car-mart.com



**We Offer:**

- Peace of Mind Package
- Service Contract Plus
- Accident Protection Plan
- 100% Satisfaction
- Pay Your Way
- Low Down Payments
- Quality Used Vehicles
- Flexible Financing
- Hand Selected Vehicles
- Convenient Payment Options
- Start Your Approval Online
- Over 150 Locations
- 40 Years in Business
- We Buy Cars

**660-956-4849 • 2015 North Baltimore • Kirksville**



**2015 DODGE GRAND CARAVAN**  
 FWD, 6 Cyl., Black



**2012 JEEP LIBERTY SPORT**  
 4WD, 6 Cyl., Gray



**2014 CHEVROLET CRUZE**  
 FWD, 4 Cyl., Red



**2014 DODGE GRAND CARAVAN**  
 FWD, 6 Cyl., Maroon



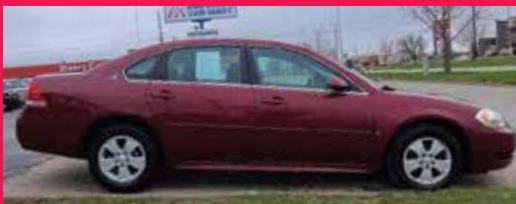
**2013 BUICK ENCORE**  
 FWD, 4 Cyl., Maroon



**2007 PONTIAC G6**  
 FWD, 6 Cyl., Black



**2015 CHRYSLER 200**  
 AWD, 6 Cyl., Black



**2009 CHEVROLET IMPALA**  
 FWD, 6 Cyl., Maroon



**2012 TOYOTA RAV4**  
 4WD, 4 CYL., BLACK



**2011 CHEVY TRAVERSE**  
 AWD, 6 Cyl., Silver



**2016 CHEVROLET CRUZE**  
 FWD, 4 CYL., BLACK



**2016 KIA SOUL**  
 FWD, 4 Cyl., Gray



**2016 CHEVROLET TRAX**  
 FWD, 4 Cyl., Black



**2007 FORD F150**  
 4WD, 8 Cyl., Gray



**2013 DODGE AVENGER**  
 FWD, 4 Cyl., Red



**2017 NISSAN ALTIMA**  
 FWD, 4 Cyl., Black



**2013 HYUNDAI GENESIS**  
 RWD, 6 Cyl., Gray



**2013 CHEVROLET IMPALA**  
 FWD, 6 Cyl., Silver



**AMERICA'S CAR-MART**  
 Keeping You on the Road



**KYLE JENNINGS**  
 GENERAL MANAGER

661645jn

# Judd Motors

Call 660-457-3700  
Hwy 63 North, Lancaster, MO

**2000 Chevy Tracker,**  
2 door, 4WD, Soft Top,  
AT, only 125K miles,  
red, very nice,  
**only \$6,995**

**2013 GMC Sierra 1500,**  
SLT, crew cab, leather, 4WD,  
red, 140K miles, excellent,  
**\$21,900**

**2006 Chevy 1500,**  
ext cab, 4wd, V8,  
132k, Silver Birch,  
Very nice  
**only \$11,250**

**2014 Dodge Grand Caravan,**  
SXT, power seat, power sliding  
doors, power rear hatch, Sto-N-  
Go, silver, only 92k miles,  
**now only \$13,900**

**2011 Chevy Suburban,**  
LTZ, 4WD, sunroof, DVD,  
leather, black, 141K miles,  
quad seats, **\$17,900**

**2004 Chevy Trailblazer,**  
LT, 4wd, 4.2L,  
cloth, only 108k,  
charcoal, nice,  
**only \$6,995**

**2007 Ford Freestyle Limited,**  
AWD,  
leather, sunroof, 3  
row seating, 220K,  
black, drives great,  
only. **\$4,995**

**2003 Chevy 1500,**  
ext cab,  
4WD, pewter,  
165K miles, nice,  
**\$8,995**



**Cumberland Building Dealer**

[www.juddmotors.com](http://www.juddmotors.com)

In Business Over 75 Years  
Curly and Kevin Judd

## Miscellaneous

SCOTT HUSKEY'S HOME SERVICE R-10 Foundation Enclosure Systems for manufactured, modular, & site built homes. Saves on utilities and prevents freeze ups. General maintenance and repairs since 1972 573-696-3468 "GO DAWGS"

Tomatoes \$2.00 lb, Zucchini \$.50, Cucumbers \$.50, Green Onions and More Produce Coming Soon. Kauffman Produce 11538 Iceberg Ave, LaPlata MO 63549

## TRANSPORTATION

### Automobiles

1995 Ford Explorer, 4x4, Limited Addition, black, gray leather, tow package, little rust, runs and drives well, \$2700. Call or text for more details, Moulton IA 319-560-6720

2008 Chevy Impala LT, looks good, runs good, \$187,000 miles. \$5,500.00. 660-626-9722.

2004 Ford Taurus SE, recently serviced, new brakes, battery, working air, rust, light hail, \$224,000 mile. Same owner last 14 years, come and drive it home, \$900.00. Accelerators since "1974", Kahoka, MO. 217-257-1385.

**NEMOTRADER.NET**

### Trucks, 4x4's, SUV's

### Trucks, 4x4's, SUV's

2015 Chevy Silverado 1500, crew cab WT, 4x4, 5.3L, well equipped, windows, locks, tow, keyless brownstone metallic, 143,000 mile 1 owner, \$18,900.00 Accelerators since "1974" Kahoka, MO 217-257-1385 or 660-727-3455

1988 Dodge Dakota runs good, needs starter put on. I have the starter, fix it or trailer it. Good 4x4, \$400.00. 660-973-6438.

1988 F150 4x4, cranks, won't start, \$750.00. 574 IH utility needs TLC, \$3000.00, Albia, IA. 641-680-2732.

2017 Ford F150 4x4, 55,000 miles, backup camera, great conditions, extended camera. 785-893-2706.

2007 Ford F150 King Ranch edition, low miles, four wheel drive, \$12,000.00. 660-626-9722.

### Wanted

Wanted 1991 to 1993 S10 4x4, any condition, for 16 year old. 660-341-6267

### YARD SALES

#### Garage Sale

Sale Sunday August 21st Noon-8:00 pm Action Figures, Art Work, Collectables, Vintage Clocks, Book Ends, Westmoreland Milk Glass, Breyer Horses & More. 24488 Lumber Loop Macon, Ten Mile Area

## Auction Sales

**JOHNSTON AUCTION & REAL ESTATE**  
**2 ESTATES AUCTION**  
Friday, August 26  
4:00 pm  
Johnston Auction Center • Hwy 24 • Madison, MO  
Selling the Mayhew & Owens Estates & Others



**130+ lots of Gold & Silver Coins (6:00 pm)**  
**Lots of Collectibles!!**  
**The building is full!**

Black Folk Art; 50+ Kerosene & electric Lamps; Tobacco Adv. Tins & signs; Roy Rogers toy pistol set, picture & more; Electric Train Sets, Tracks & Accessories; Collection of Lighters; Figurines; Cookie Jars; Old Life magazines; Pocket Watch Collection; Pocket Knives; Wooden Wringer Washer; Mini Adv. Model Mercury outboard motors w/electric motors;  
**HOUSEHOLD:** Dining sets; Bedroom Furniture; Household Appliances; Curio Cabinets; Sofas; Rockers; Recliners; Electric Lift Chair; electric 4 wheel handicap scooter & More;  
**MOWERS - UTV - JEEP - TRUCK:** Ford F600 truck with bed/hoist; Ariens ZTR 25 hp, 60" Deck; X-Mark ZTR 25 hp, 60" Deck; Kubota 1860, 350 hrs, 54" Deck; Polaris 700 Ranger XP UTV; 1973 CJ5 Jeep, 150 hp V8; 1979 F700 Ford Truck, 13' dump bed;  
**MACHINERY & TRAILERS:** Kubota L3010 Tractor, Hydro, w/Loader; Dynamic articulate loader; MF 1260 tractor w/loader; Westendorf TA26 front loader (like new); Gas 240 Air Compressor on Trailer; 3 pt Backhoe; 16' GN Stock Trailer; New 18' Trailer 2 axle; New 14' Trailer w/Gate; 3 pt Plow; 3 pt Cultivator; 15' Brush Hog; 3 pt Tiller;  
**SKID STEER ATTACH:** Lowe PHD, Tree Shearer, Forks, Bucket, Grapple Bucket; 3 pt Rotary Tree Cutter; 3 pt Road or Arena Grader; 3 pt Sprayer; JD pt Manure Spreader; Koyker Tractor Front End Loader; Wood Splitter;  
**THE COINS AND MACHINERY WILL BE SOLD LIVE AND ONLINE. ALL OTHER ITEMS WILL BE SOLD LIVE ONLY.**  
Terms: Cash or Good Check, Fees for Credit Card Payment; Sales Tax Collected • Photo ID Required for Bidder Number Not Responsible for Accidents, Lost or Stolen Items. Announcements day of auction take precedence over all advertisements.

**JOHNSTON AUCTION & REAL ESTATE**  
**Col. James L. Johnston AUCTIONEER**  
573-473-4904  
660-291-5921  
[jamesjohnstonauction.com](http://jamesjohnstonauction.com)

## Auction Sales

### Antique Vehicle Auction Elbert Putnam Estate Highland Trail Unionville Mo August 27th 4 pm

1960s Chevy Camaro, 1966 Dodge pickup, 1963 Plymouth 318 V8, 1960s Dodge Dart, 1962 Chevy Sedan, Year ? Volkswagen Bug, 1946 Desoto 4 door, 2 1948 Plymouth sedans, 2 early 50s Ford Sedans, 2 1958 Ford sedans, 2 late 40s short school buses, 2 1958 Ford sedans, 1959 Chevy 4 door sedan, 1957 Studebaker, 1952 Chrysler 4 door sedan, 1959 Plymouth station wagon, 1970s Ford Maverick, Antique Allis Chalmers round balers, Antique 1 row corn pickers, few other antique farm type equipment, pull type road grader, Gleaner F combine, 1950s John Deere tractor for salvage or parts Likely to find other things in the weeds. Sale will not last long so be on time. Check out pictures and full listing on our Facebook page. Sale will be held approximately 1 mile south of the Putnam County School on 20th street or also called Highland trail. Some vehicles might be restorative, and some would only be good for parts or salvage.

SEE OUR FACEBOOK PAGE FOR PHOTOS

**AAA ALTISER AUCTION & APPRAISAL**  
KRIS ALTISER  
660-626-4960

This ad supports journalism. Facebook and Google do not.

#ProtectLocalNews  
NewsMediaAlliance.org

### Keen Kutter & Winchester Collectible Auction

Tuesday, August 30, 2022 at 4:00 p.m.  
Owner: Pete Burmeister

Directions: 28251 US Highway 63 North, Macon, Missouri. From US Highway 36 travel approximately 2 miles North of Macon to Scotty's Auction Barn and Event Center on the Westside of the road. Watch for signs the day of the sale.

This is going to be a large Keen Kutter and Winchester collector auction. This collection was started many years ago but as health issues have arisen, we will offer this amazing collection at auction.

Keen Kutter wood tool cabinet full of Keen Kutter tools, very hard to find; various Keen Kutter displays; Keen Kutter levels, Keen Kutter pipe wrenches, hatchets, hammers, hand planes, hand saws, sheep shears, meat grinders, padlocks, pocket knives, scissors, clocks, straight razors, flatware; Simmons hardware, flatware; Simmons tools; Keen Kutter long handled tools.

Winchester: flashlights; scales; clocks; rare Winchester fishing poles; padlocks; Winchester tools

Shapleigh items including antique order catalog; lantern; Keen Kutter toy gun; antique wood ammo boxes; bullet molds; antique ammo never opened; glass minnow trap; wood decoys; miscellaneous antiques and tools; metal tractor seats; tap and die sets; sockets and ratchets; ?? Milwaukee angle grinders; battery charger; horizontal air compressor; lots of miscellaneous gun books; modern and antique ammo, guns and hunting prints.

SEE MORE PHOTOS ON SCOTTY'S WEBSITE

**SCOTTY'S AUCTION SERVICE**  
573-356-4405

Michael Cunningham 660-651-2288 • Paxton Pittman 660-346-1956  
[WWW.SCOTTSAUCTIONSERVICE.COM](http://WWW.SCOTTSAUCTIONSERVICE.COM)

## SMALL ANIMAL AUCTION

Saturday, August 27th

To be held at the  
**SCHACHTELE BARN - KEYTESVILLE, MO**  
From Hwy 24 at Keytesville, take Hwy 5 approx 4 miles to site w/ brown barn/green roof on the West side of the road, or from Hwy 36 at Marceline exit take Hwy 5 South, approx. 16 miles to site. Follow Auction signs!

Starting @ 11:30 am

We will start with Misc. Items Outside & Follow with Small Animals approximately 12:00 noon. Expecting Chickens, Geese, Ducks, Turkeys, Rabbits, Goats & Many other Small Animals! Expecting 40 Hair Ewe Lambs 85-100 lb & has been running w/Bucks, 30 Boer & Spanish Nannies Several sets of lambs 50-100 lb, Expecting 500 Sheep & Goats

We are NOT accepting any HOGS! All Out of state Animals to be Sold MUST Have Proper Health Papers!  
Lunch Served • Call for More Details!  
Tony Schachtele 660-413-3250

## WE APPRECIATE ALL CONSIGNMENTS!

Terms Cash - good Check with Proper ID We are NOT Responsible for Accidents to Man, Woman, Child, or Animal. We are NOT Responsible for Lost, Stolen, or Damaged Articles or Property.

**MUST SELL ALL MUST GO!**

1999 F250 Superduty with welder tool box loaded Also garage full of tools & Drill Press  
Call 660-342-2122 or 660-216-5656

**AUTO'S UNLIMITED** 660-665-8149 | 660-341-0965  
No Sunday Calls! | 17406 Bob Rd • Kirksville, MO

**FEATURED VEHICLES**

<p><b>White Ford Ranger FX4 XLT</b> Excellent Condition, four-wheel drive extended cab four door with 150,000 MI</p>	<p><b>2007 Saturn Ion II</b> 92,000 miles, 30 - 38 MPG great shape!</p> <p><b>\$5,000</b></p>	<p><b>1986 Bronco 2</b> with 64,000 MI cold AC excellent condition</p>	<p><b>Trailer 16 ft with 2 ft dovetail</b> total 18 ft 12,000 lb capacity excellent condition</p> <p><b>\$3,850 or Best Offer</b></p>
--	---	--	---

ALL VEHICLES HAVE GONE THROUGH A 60 PT INSPECTION! STATE INSPECTED! CALL FOR MORE INFO!

Semi Annual Midwest Draft Cross & Quarter Horse Sale

**FRIDAY, AUGUST 26, 2022**  
at the Timberline Arena  
23783 320th St. Jamesport, MO

**PREVIEW THURSDAY, AUG. 25**  
OPEN PREVIEW 10-4  
ROPE HORSE PREVIEW 6-8 P.M.  
Serving Free Meal 4-6 p.m.

**Selling 150+ Broke Horses**

Call for Catalog  
Marion Kramer 660-973-5098  
Alvin Detweiler: 660-684-6974  
Jacob Gingerich 660-684-6942

**SPARKS AUCTION**  
**AUGUST 27TH ~ 10AM**

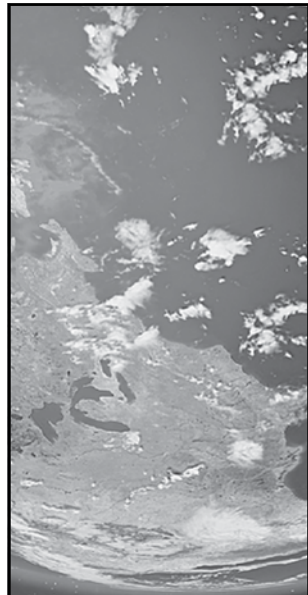
**DONALD KELLER ESTATE**  
2130 CR 159 - MAYWOOD, MO  
TRACTORS, FARM EQUIPMENT  
GUNS, HOUSEHOLD ITEMS

To View Contact  
Jesse Sparks 573-406-8787

TO VIEW PICTURES GO TO  
[WWW.SPARKSAUCTIONSERVICE.COM](http://WWW.SPARKSAUCTIONSERVICE.COM)  
OR LIKE US ON FACEBOOK

There's a better way to get attention.

Keep life simple. Take out an ad.



**SPACE AVAILABLE**  
 ASK ABOUT OUR OUT-OF-THIS-WORLD PRINT ADVERTISING RATES THAT FIT ANY BUDGET!

## SEPTEMBER LAND AUCTIONS

Attention Farmers, Investors, Hunters & Homesite Buyers!



THE BOLING ESTATE LAND AUCTION

**372<sup>±</sup> ACRES** Offered in 7 Tracts

THURS, SEPTEMBER 1<sup>ST</sup> AT 5:30PM

AUCTION LOCATION: American Legion - Shelbina, MO  
 • OUTSTANDING TILLABLE ACREAGE  
 • BUILDING SITES • HUNTING LAND  
 • COUNTRY HOME

CALVERT FAMILY FARMS AUCTION

**355<sup>±</sup> ACRES** Offered in 6 Tracts

THURS, SEPTEMBER 8<sup>TH</sup> AT 6PM

AUCTION LOCATION: American Legion - Shelbina, MO  
 • TILLABLE & PASTURE LAND  
 • WOODED RECREATIONAL LAND



ELKE PEAK LAND AUCTION

**48<sup>±</sup> ACRES** Offered in 1 Tract

THURS, SEPTEMBER 15<sup>TH</sup> AT 5:30PM

AUCTION LOCATION: American Legion - Shelbina, MO  
 • 42.05 FSA TILLABLE ACRES  
 • EXCELLENT INVESTMENT OPPORTUNITY

LAND INSPECTIONS: Walk-Over Inspections on Land are Welcome Any Time. Please be Mindful of Current Growing Crop.



Contact: Jay Scott Gander 660.676.1479 or Anthony Peoples 660.651.6501

Full Details @ [www.peopleslandco.com](http://www.peopleslandco.com)

**Turn Your Clutter Into Cash**

Get money in your pocket and room in your garage when you sell your stuff and promote your sale through the newspaper classifieds!

\$254  
 \$33  
 \$95  
 \$21  
 \$57



A FAMILY OWNED BUSINESS SINCE 1979



Headquartered in Hamilton, Illinois, Sullivan Auctioneers, LLC is one of the largest Real Estate and Farm Machinery Auctioneers in the nation. For more than 40 years we have been conducting professional auctions. We connect our sellers with thousands of interested buyers around the world.

Considering an Auction?

CALL OR EMAIL TODAY FOR A NO OBLIGATION CONSULTATION!  
 Toll Free (844) 847-2161 | [Sold@SullivanAuctioneers.com](mailto:Sold@SullivanAuctioneers.com)  
[www.SullivanAuctioneers.com](http://www.SullivanAuctioneers.com) | Lic. #444000107

VIRTUAL ONLINE

## MONROE COUNTY, MISSOURI LAND AUCTION

Tuesday, September 13, 2022 at 1:00 PM



128 ACRES± • 4 TRACTS (Subject to Survey)

- ✓ IMPROVED PASTURE LAND & HAY PRODUCTION!
- ✓ QUALITY FACILITIES & FENCING!
- ✓ PRIME RURAL BUILDING SITES!

Farm is located approximately 2.9 miles south of Hunnewell, MO or approximately 8.9 miles southwest of Monroe City, MO in Section 15, T65N•R9W and Sections 22 & 23, T56N•R9W, Washington Township, Monroe County, MO.

LJ & Ruth C. Hagan Trust

Representing Attorney: James McConnell Law Office  
 127 East Walnut Street | Shelbina, MO 63468 | (573) 588-2115  
 Title Work: Monroe County Abstract & Title  
 229 N. Main Street | P O Box 248 | Paris, MO 65275 | (660) 327-4109  
 Auction Managers:  
 Bill Fretwell (660) 341-7735 & Jennifer Wood (217) 257-8812



# CONSTRUCTION EQUIPMENT AUCTION

510+ ITEMS SELL  
 NO RESERVE!  
 THURSDAY,  
 AUGUST 25



2 SELLING

JR9463  
 '21 Peterbilt 567  
 dump truck



DN0478 '05 Vermeer HG6000 horizontal grinder



JR9441 '19 Volvo L60H wheel loader



JR9460 '19 Bomag BF200 C-2 paver



DN5056 '12 Mack GU813 hydrovac truck



JX9355 '11 John Deere 350G excavator



LK9001 '07 John Deere 350D excavator



JM9218 '10 John Deere 824K wheel loader



KP9499 '21 JCB 407 T4 wheel loader



KP9502 '21 JCB 3TS-8W skid steer loader



DS8454 Watson 2500TM drilling rig



DJ3842 '13 Komatsu PC360LC-10 excavator



INVENTORY INCLUDES: dump trucks, wheel loaders, skid steers, excavators, drilling rig, crane truck, pneumatic roller, bucket trucks, tow truck, screening plant, tank truck, forestry bucket trucks, backhoes, cranes, mini excavator, boom lift and more. All items are sold "AS IS." 10% buyers premium applies.

**BID NOW! [purplewave.com](http://purplewave.com)**



**Macon County, Missouri**  
**LAND AUCTION**  
 SATURDAY SEPTEMBER 17, 2022

AUCTION 1 1:00 PM  
 AUCTION 2 2:00 PM

TRACTS 1-7  
 1348 ACRES  
 10 TRACTS

TRACTION 8

TRACTION 9-10

**AUCTION 1**  
 Splitting into 7 tracts. Tracts 1-7 for identification purposes only. Stretching 1,355.45 surveyed acres almost all contiguous. From the magnificent location, beautiful views, crop land, timber, gorgeous lake, multiple ponds, the ranch reflects the dream of large land ownership at its finest.

HIGHLY TILLABLE  
 MATURE WHITETAIL

ROI  
 MATURE TIMBER

**AUCTION 2**  
 Splitting into 3 tracts. They'll be tracts 8-10 for identification purposes only. Farms are east of Lapita and Atlanta Mo. Properties represent highly tillable crop land, ROI, and recreation opportunities.

ANDY BOYER 636-295-1476  
 JASON COURTNEY 816-654-2144

Auction Sales

**LOLLI LIVESTOCK MKT, INC.**  
**Special Cow, Cow/Calf & Breeding Bull Sale**  
**Tuesday, August 23 - 11am**

**DOUG & JOE CLARKSON** - Complete Dispersal - 33 Black Heifers; 2 years old, home raised, bred to Angus bulls, start calving Sept. 10, 90 day period.  
**DOUG CLARKSON** - Complete Dispersal - 77 Fancy Black Angus; 3-7 years old, bred to Angus bulls. Cows are home raised, start calving Sept. 10th, 60 day calving period.  
**TERRY OERLY** - 20 Fancy black heifers: 2 years old, 1100-1200 lbs, start calving Sept. 10th for 60 day calving period, utd on all shots, bred to low birth weight Sydenstricker bulls.  
**WILLIAM CLETON** - Complete Dispersal - 30 Charolais Cows: 4-7 years old, bred to Angus bull.  
**ANDY HUNTSMAN** - 22 Black & Red Cross Bred, calving end of August-October.  
**LARRY CORNELL** - Complete Dispersal - 20 Herefords, 1 registered bull, 2 Cow/Calf pairs, spring & fall calves.

Saturday, Sept 3 - 9am  
**Catalog Horse Sale**  
 Featuring over 200 head  
 See our website for details - [lollibros.com](http://lollibros.com)

Cafe Open Lolly Livestock Market, Inc. Cafe Open  
 704 Main st \* Macon, MO \* 660-385-2516 [www.lollibros.com](http://www.lollibros.com)  
 Frankie 660-651-4040 \* Tim 660-651-3496 \* Joseph 660-346-9711  
 Jordan 660-346-0410 \* Cody 660-676-9392 Cattle accepted on Sundays

**The Dale Owens No Reserve**  
**COLLECTOR CAR AUCTION**  
 SATURDAY, SEPTEMBER 3 • 10:30 AM  
 PHYSICAL ADDRESS: 115 Pershing Dr., Brookfield, MO

Full details and photos online!

- 1973 Jeep Commando
- 1957 Ford Fairlane 500 Convertible
- 1960 MGA 2 door coupe
- 1974 Chevrolet Corvette Stingray coupe
- 1963 Ford Galaxie 500XL
- 1957 Ford Fairlane
- 1936 Nash custom sedan
- 1975 Triumph TR6
- 1935 Ford sedan
- 1928 Oldsmobile
- 1969 MG kit car
- 1974 Jeep DJ-5C Postal Carrier
- 1985 Dodge Ram Propector pickup
- 1972 Porsche 914
- 1981 Chevrolet LUV pickup
- 1967 Chevrolet C10 pickup
- 1998 BMW 740IL
- 1988 BMW
- 1972 Opel GT project car
- 1996 Chevrolet Silverado 3500 dually pickup
- 1956 "Gottawoodie" boat
- 2002 Harley Davidson Road King motorcycle
- 2009 Ultima Street custom motorcycle
- 1988 Harley Davidson Sportster
- 1996 Suzuki LS650 motorcycle
- Hyosung Sunny scooter
- Sense scooter
- Motorcycle side car
- 1962 John Deere 4010 2wd tractor, diesel
- John Deere 260 front end loader
- 2002 PJ 518D car hauler trailer
- Allis Chalmers 5020 2wd tractor
- Massey Ferguson 5' finish mower
- Vermeer 605 Model Super G baler
- Pull type steel road grader

Can't make it to the auction? Internet bidding is available  
 Online Bidding Powered By **proxibid**

**DALE & LAVERNE OWENS**  
**VEHICLE QUESTIONS CALL DALE: (660) 412-1556**  
**[www.TeterAuction.com](http://www.TeterAuction.com)**

**TIMED ONLINE | NO-RESERVE**  
**ESTATE AUCTION**  
**BIDDING CLOSURES: THURS., SEPT. 8, 2022**  
**STARTING AT 10:00 AM CDT**

Physical Address: 2459 Highway 16, West Point, Iowa 52656  
 INSPECTION: FRI., SEPT. 2<sup>ND</sup> • 9:00 A.M. - 2:00 P.M.

**HIGHLIGHTS:** 1994 Ford Ranger 2wd pickup, only 16,046 miles; 1992 Cadillac Sedan Deville 4 door car, 48,300 miles; 1977 Chrysler Cordoba 2 door car, showing 35,100 miles; 1970 Dodge Cornet 440 4 door car for parts; 1977 John Deere 2640 2wd tractor, 2,147 hours; John Deere 307 "Gyramor" 6' pull type rotary cutter; John Deere 2 bottom horse drawn plow; John Deere 5 7' sickle mower; 7' 3pt. blade; John Deere GT262 lawnmower; John Deere 68 lawnmower; John Deere 42" lawn sweep; 42" lawn tedder; Metal lawn cart; Lawn Chief 5hp garden tiller; Also selling tools, household items, collectible items & antiques.

WATCH FOR INFORMATION REGARDING THE DALE WILSON ESTATE LAND AUCTION BEING HELD ON NOVEMBER 1, 2022 AT 10:00 A.M.

**Dale K. Wilson Estate**  
 Pilot Grove Savings Bank - Executor for the Estate  
 Ted Vonderhaar | President & CEO  
 Nichole L. Nagel | Assistant Vice President/Trust Officer  
 Auction Managers: Pat Steffensmeier (319) 470-5284, Jeff Hoyer (319) 759-4320 & Jim Huff (319) 931-9292

**SULLIVAN AUCTIONEERS, LLC** (844) 847-2161  
[www.SullivanAuctioneers.com](http://www.SullivanAuctioneers.com)  
 License #444000107

**Rocheport Antique, Collectible & Woodworking Auction**  
 Saturday, August 27, 2022 at 10:00 a.m.  
 Owner: Basye Farms

Directions: 1160 State Route EE, Rocheport, Missouri. From Rocheport, follow County Road 433 and County Road 429 to State Route EE. The auction location will be on your right. Watch for signs the day of the sale.

**Vehicle and Equipment:** All original Ford F700, 370 -4V, 5,400 miles, 16' livestock and grain bed, show quality; 2001 Maxwell 25' gooseneck trailer with ramps, 2 10 lb axles, long tong hay rake; 4 wheel wagon, needs work  
**Household Items:** Samsung electric washer and dryer, front load, like new condition on stands; dining table with leafs and 6 chairs; matching China hutch and buffet; large gold color; Samsung flatscreen TV; brown leather recliner; Frigidaire upright freezer; Kenmore black on stainless side by side refrigerator/freezer; wrought iron table and chairs; 5 drawer chest of drawers; many pieces of glassware including Pottery Barn pieces as well as vintage items; GE refrigerator freezer; Pyrex refrigerator dish.

**Antiques & Collectibles:** Antique tools and petroliana; Bradbury limited Oldham sewing machine; antique door rails; barn trolley track with haynes; iron wheels; various shoulder mount white tail deer; 2 bobcat mounts; 2 turkey mounts; full body mount whitetail; antique railroad cart; several sewing machine bases; various hang on deer stands and climbers; multiple barn pulleys; pioneer sewing machine ringer; 3 barn trollies, Peerless, Myers unloader, Whitman & Barnes, Kansas City, MO; antique scalding bath; round oak wood stove; wood stove jacket; butcher's table on metal stand 3'x6'; large metal wagon wheels; multiple railroad carts; cream separators, hand crank Devalval, electric IH; lots of barn hardware, hinges, rollers and latches; mantle clock; stackable lawyer's bookcases; antique oak roll top desk; antique oak rocking chair; many crafting items; wire dress forms; **MORE LISTED ON WEBSITE.**

**Woodworking Tools & Materials:** 10' x 6' barn timers, various lengths; spotted maple; hard maple up to 3"x22" width of various lengths 12" and under; several cross cut saws; one man ice saw; spotted maple top and red oak frame; soft maple 3 1/2" thick up to 45" wide; red oak; white oak; various board doors; rough cut walnut and cherry; porch posts from 1892 school house; join wood clamps; antique noth clamps; several antique adjustable saw horses; Husqvarna dual head 3120 XP Alaskan mill; lots of cutoffs and small wood stacks; antique sawhorse, wooden screw, adjustable base with table top; WoodMaster 3 hp 25" planer molder; BAM bandsaw, 20" cutting height, 32" depth, 30 & 34 deck, 3hp, 5 HP; Grizzley wood lathe model G10672, needs work

**Tools and Equipment:** Excel high pressure washer with 5 hp Honda motor rated at 2600 PSI; Centurion 5000 wall generator; miscellaneous metal shelving; Rigid 10" hybrid table saw with movable base

SEE MORE PHOTOS ON SCOTTY'S WEBSITE

**SCOTTY'S AUCTION SERVICE**  
 573-356-4405  
 Michael Cunningham 660-651-2288 • Paxton Pittman 660-346-1956  
**WWW.SCOTTSAUCTIONSERVICE.COM**

**TETER AUCTION COMPANY, LLC**  
 (660) 963-2461  
 AUCTIONEERS:  
 Josh Teter, David May, Tyler Keenan

**Absolute Land Auction of the KLC Farm**  
 August 30th, Noon at the Caldwell Building

Farm is located approx. 1 mile north of Lewistown, Mo and consists of 830 acres (subject to survey) that will be sold in 11 tracts. Approx. 450 acres tillable, 145 acres pasture and the balance in timber. Live auction to be held at 30200 Hwy 16 Canton, Mo.

**MEYER & COMPANY AUCTIONS**  
 Online bidding will be available on our website.  
**Meyerlistings.bidwrangler.com**  
 For more information call:  
**636-462-7777**

**HANSEN PRIMITIVE ESTATE AUCTION**  
 SATURDAY, AUGUST 27 • 9:30 AM  
 PHYSICAL ADDRESS: 24325 LIV 377, HALE, MO 64643

Due to the death of Dr. Norman and Lavina Hansen, the following will be sold at the farm located 3 miles northwest of Hale, MO. From Chillicothe, travel south on Hwy 65 for 11 miles to Hwy H, then turn east on Hwy H for 6.1 miles to LIV 377. Turn south on LIV 377 for 2 miles to sale location. From Carrollton, travel north on Highway 65 for 16 miles to Hwy J, then turn east on Hwy J for 6 miles to CR 213. Turn north on CR 213/LIV 377 for 1.6 miles to sale location. Auction signs posted sale day.

**FARM PRIMITIVES:** A LARGE run of farm fresh primitives so numerous it's impossible to list them all! Including hatch collection (100+, NWA, Rock Island, Lakeside, Craftsman, KK, others); galvanized tubs (singles, doubles, on stand, etc); galvanized buckets, boiler, grain tubs, more; 5g Eads water bottle on dispensing stand; metal gas cans; metal tractor seats; buzz saw blades; hand saws; buck saws, ice saw; 2-man cross-cut; barn trollies (x2); hay fork; pulleys; milk's wagon; old decoys; milk crates; folding wood crates; antique safe; brass items; baritone; 1922 shooting trophy; porcelain pans; chimney cabinet; 3 door oak cabinet; store cabinet; old doors; gunny sacks; suitcases; old wood ladders; old keys; wood kegs (55g, nail); ammo boxes; milk cans; wood oars; oil cans; old kitchen cabinets; school lockers; book cases; buffets; porcelain top table; wood tables; possum belly cabinet base; well pump; wood chairs; old door knobs; MFA bucket; old wheel barrow; fireman's axe; meat cleavers; treadle sewing machine; large run of old tools, including hammers, saws, wrenches, yard tools, draw knives, scythes, pulleys; and more! The sheds are full and this list only scratches the surface!

**GUNS, COINS, JEWELRY:** Guns: including Witte Rifle, 22 cal., bolt action. S.L.; Western Field Model SB100B shotgun, 20g, 3", single shot; Riverside Arms shotgun, 16g, single shot; H&R Pistol, 32 cal. SW, double action; misc. ammo; gun cases; Coins: including Morgan Dollars (x24 various dates); Peace Dollars (x16); Eisenhower Dollars (x8); Walking Liberty Halves (x3); Franklin Halves (x13); 1964 Kennedy Halves (x19); 1965-69 Kennedy Halves (x15); Pre 64 Washington Quarters (x21); Mercury Dimes (x194); War Nickels (x55); Wheat Cents (300+); misc foreign coins; books including Kennedy Halves; Buffalo Nickels; Jefferson Nickels; Lincoln Book 1 and 2; Currency including \$20 Bill FRN 1934; \$5 Bill National Currency ("First National Bank of Denver", 1925); \$5 Bills 1934; \$2 Bills 1953; \$1 "Barr" Bills 1963; \$1 Silver Certificates; \$1 Silver Certificate 1928., more! Jewelry: wedding band, 10k, YG, comfort fit; wedding rings, woman's 14k, (x2); man's ring, 14k YG, clear stone; plus small amount of costume jewelry.

**ANTIQUES, FURNITURE, MEDICAL ITEMS, COLLECTIBLES:** Medical collectibles including cabinets w/ enamel tops; examination table; Chicago scale; doctor's bag; microscopes (antique Spencer Compound, Bausch and Lomb); antique cast cutter; Taylor barometer; medical and other old books; old surgical tools; sterilizer medical stand; oak stacked book cases (x4); secretary desk; antique goat wagon; mission style oak rocker; stone marmalade jar; NICE Structo metal excavator; iron elephant book ends; old sleds; roller skates; trunks; lanterns; mid-century Silvertone record player; old records; wood folding chairs; original yard darts; many old prints (Lone Wolf, others); marbles; kerosene lamp; and more to be added by sale day!

**TOOLS, FARM RELATED:** Hay wagon; bale rings (x2); feed bunks; galvanized water tanks (round, oval); 3-pt bale spear; hand tools including pipe wrenches; wood planes, crescent wrenches, vice grips, pliers, hand wrenches, C-clamps, jobbers, pitch forks, round point shovels, aluminum scoops; log chains; spades; 4" bench vise; come-a-long; Lyon metal work bench; jack stands; Test Rite chest on chest tool box; old electric fencers; house jacks; hand saws; draw bar; wire stretchers; pick axes; potato forks; chain hooks; clevises; can hooks; funnels; step ladders; splitting mauls; RR jack; many, many hammers; LOTS OF NUTS, BOLTS, NAILS, SCREWS and so much more! This is one you really need to come and see!

**ADDITIONAL DETAILS & PHOTOS ONLINE AT:**  
**www.teterauction.com**  
**DR. NORMAN & LAVINA HANSEN ESTATE**

**Allen Auction & Real Estate Service LLC**  
**ANNUAL Fall CONSIGNMENT AUCTION**  
 Allen Auction Sale's Lot, Hawk Point, MO  
 SATURDAY AUGUST 27, 2022 @ 9:00 AM

**Directions:** Allen Auction Sale's Lot. From Hawk Point, MO, Take Hwy 47 South 2.5 miles, Auction on Left Side. Watch for Signs Day of Auction.

**COMBINES & HEADS; TRACTORS; FARM EQUIPMENT; SKID LOADER EQUIPMENT; VEHICLES; CONSTRUCTION; HAY EQUIPMENT; TRAILERS & WAGONS; LIVESTOCK EQUIPMENT & SUPPLIES; RECREATION; LAWN & GARDEN; SHOP EQUIPMENT & TOOLS; MISCELLANEOUS.**

**Auctioneers Note:** We will be running 2 auction rings. Please come prepared with extra bidders. Any questions on any of the equipment, feel free to give us a call at the office. Thanks Nick and Kyle.

**ALLEN AUCTION & REAL ESTATE SERVICE LLC**  
 (636) 338-4805 • Hawk Point, MO • [www.allenauction.net](http://www.allenauction.net)  
 The Auctioneers

Nick Allen (636) 358-2900  
 Kyle Allen (636) 236-2344  
 Tec Parr ((636) 661-5775  
 Elden Foster (573) 239-6745  
 Fax (636) 338-4823 • E-mail [office@allenauction.net](mailto:office@allenauction.net)

**For updates on list & photos check our website**  
**WWW.ALLENAUCTION.NET**

**HIGH QUALITY ANTIQUE FURNITURE AUCTION**  
 Saturday, August 27, 2022 at 10:00 a.m.  
 Twisted W Arena  
 7180 Quarter Horse Lane, Hannibal, Missouri

**SELLERS: RONNIE AND MIKE WEAR**  
 More pictures and information at:  
[www.hammondwatsonauctionservice.com](http://www.hammondwatsonauctionservice.com)

**Hammond & Watson AUCTION SERVICE**  
 Lionel Hammond & Kirk Watson  
 573-406-3877  
 PALMYRA MO

Like us on FB  
 Look us up on Auction Zip

**DRUG STORE**

**TETER AUCTION COMPANY, LLC**  
 (660) 963-2461  
 AUCTIONEERS:  
 Josh Teter, David May, Tyler Keenan

# NEMO

Trader

**FREE**

NEW EDITION EVERY FRIDAY!  
VOL. 29 • NO. 52 • JANUARY 28, 2022

# NEMO

Trader

## THE NEMO TRADER

PO BOX 809 • KIRKSVILLE, MO 63501 • PHONE 660-665-8500  
Web Site: [nemotrader.net](http://nemotrader.net) • Email: [sales@nemotrader.net](mailto:sales@nemotrader.net)

A WEEKLY ADVERTISER SERVING ALL OF NORTHEAST MISSOURI AND THE SURROUNDING AREA



**ED'S MACHINERY LLC**  
QUALITY MACHINERY SINCE 1997

Have equipment to sell? Consign today!  
**Absolute Auction, No Reserve.**  
Consignments accepted until Wednesday, March 9th, at 5:00 P.M.  
Print advertising deadline: February 11th, 2022

**EXCHANGE YOUR EQUIPMENT FOR CASH!**

660-883-5501

[WWW.EDSMACHINERY.COM](http://WWW.EDSMACHINERY.COM)

**CONSIGNMENT AUCTION**  
Live on site & Online  
March 11<sup>th</sup>, 2022 @ 9:00 AM

17920 US Hwy 136 • Memphis, MO  
- 1 Mile West of Memphis on Hwy 136 -

*The Meeting Place For Buyers And Sellers!*

*Call Cindy!*

**660-988-6830**

chigh@nemotrader.net  
701 East Laharp Ste. C • Kirksville, Mo 63501

**NEMO** Trader    **KIRKSVILLE Daily Express**    **The Kirksville CRIER**

**WE CAN ALSO PRINT YOUR INSERTS!**

CALL OR EMAIL FOR YOUR CUSTOM QUOTE!

**Insert Rates (11,000 pcs):**

8.5" x 11" single sheet	\$385
4-12 page tabloid	\$572

**We are a free publication serving a 20 county coverage area in Missouri, Iowa, and Illinois.**

We distribute 11,000 copies each week to convenience stores, restaurants, and other businesses for readers to pick up.

**NEW ISSUE EACH FRIDAY, ALSO AVAILABLE ONLINE AT NEMOTRADER.NET.**

# BRADLEY TRUST AUCTION

2393 COUNTY ROAD 2475 - HUNTSVILLE, MO

## WEDNESDAY, AUGUST 24, 2022 @ 10 AM

The Bradley's have sold their family farm and after 3 generations of accumulating they have chosen to liquidate everything at public auction. Large auction, plan to spend the day, some unusual finds along with many usable items.



**FORGE - FLY WHEEL - TREE SAW - SCALES - SEED CLEANER - TRUCK - WAGONS - IMPLEMENTS - FARROWING CRATES - FARM ITEMS - ANTIQUES & COLLECTIBLES - LOG SPLITTER - CHAIN SAWS - PALLET JACK - TOOLS - RR TIES - LUMBER - WINDOWS - SHELVING - WOOD STOVE - HOUSEHOLD - FULL LISTING & PHOTOS @ IMANAUCTION.COM**

**TERMS:** Cash, Check or Credit Card (3%) With Proper ID. Statements Made Auction Day Take Precedence Over Ads, Not Responsible For Accidents Or Sold Items, Restroom & Refreshments Available, Good shade for horses and water!

*Bradley Family Trust \* Aubrey M. Bradley III Trustee*

**IMAN AUCTION COMPANY | 660-388-6235 | ImanAuction.com**

## PUBLIC AUCTION

We will sell the following items for the late Dr. Norton and Mildred Bohon which has been moved to **CHRISTY'S AUCTION BARN, 126 E. SANDERS, LA PLATA, MO** on

### SAT., AUGUST 27TH, 2022 @ 10 A.M.

**ANTIQUE FURNITURE:** Very nice Burl Walnut cylinder roll desk w/glass front doors, book shelves on top and drawers on bottom - 7' tall China cabinet w/glass front doors & mirrored back - nice walnut dresser w/wishbone mirror - two matching walnut white marble top lamp tables - walnut dropleaf small lamp table w/one drawer - walnut lamp table w/white marble scallop edges - 54" round oak footed table w/formica top - nice solid oak S-roll top desk w/drawers on both sides - three-drawer walnut dresser w/broken marble top - six drawer oak sewing machine cabinet lamp table - walnut trim platform swivel rocker - 45" round oak claw footed table - maple Lincoln rocker w/cane back & seat - walnut folding rocker w/needle point back & seat - six drawer painted treadle sewing machine cabinet w/electric Singer sewing machine - painted design hall cabinet - small walnut floor model dressing mirror - oak straight chairs - several good handmade quilts and various other amounts of fancy hand work - quilt rack - walnut straight chair - organ stool - hand painted electrified "Gone With the Wind" lamp - electrified brass base lamps w/hand painted shades - several electric lamps w/ hand painted shades - several nice oil painting pictures on canvas - fancy wooden curved jewelry box - several pieces of costume jewelry - various other antique furniture too numerous to mention. **CLOCKS, MUSIC BOX MACHINE, & STERLING SILVERWARE:** Large set of Gorham sterling silverware - several silver plated items - silver plated souvenir spoons & rack - walnut cabinet metal comb music box (plays) - anniversary clock - England wall hanging weight clock - New Haven oak wall clock - Lustan German wall clock - oak kitchen clock. **ANTIQUE GLASSWARE:** - Eight piece Czechoslovakian glass spice set - several pieces of England flow blue dishes - very large set of Alfred Meakin blue & red dishes - six coin spot water glasses - lots of good pressed and patterned glassware such as vinegar crutes, pitcher, glasses, bowls and baskets - several hand painted bowls & plates - large set of Mason Vista England red trim dishes - crystal ware - amber coin glassware - Pyrex & Fire King dishes - lots other glassware - brass umbrella holder - several copper molds - cookbooks. **HOUSEHOLD ITEMS:** - Queen size bed complete w/brass headboard - Ethan Allen maple dresser w/mirror - maple drop front desk - queen size bed complete w/Hollywood frame - white French Provincial dresser, small chest, and night stand - three cushion off white hide abed divan - maple dropleaf coffee table - small three cushion divan - sewing notions - several roller kitchen chairs - Intuition power head sweeper - wall hanging mirror - area size rug - metal glider swing - two swivel patio chairs - patio table - small BBQ grill - lots of odd & end dishes - pots & pans - kitchen utensils - paper shredder - small electrical appliances - large lawn cart - several lawn & garden tools - two large full assortment cabinets - various nuts & bolts - electric hand tools - drop cords - lots of other items too numerous to mention. **AUCTIONEER'S NOTE:** This is a very large auction with a collection of nice & clean items. **TERMS: Cash/Check w/ID - Lunch on Grounds**

## Christy's Auction Service

La Plata, MO 63549 660-341-4531


See Website for Photos: [www.dchristyauctions.com](http://www.dchristyauctions.com)  
 & Christy's Auction Service on Facebook & AuctionZip.com  
 Auctioneers - David Christy 660-341-4531  
 Jason Wood - 660-341-7884 Greg Smoot - 660-341-5175

## NEMO TRADER • Advertise with us TODAY!

Phone: 660.665.8500 • PO BOX 809  
 701 East LaHarpe St, Suite C, KIRKSVILLE, MO 63501

# CARPENTER TRUST LAND AUCTION

115 SOUTH MAIN ST - MADISON, MO COMMUNITY CENTER  
**WEDNESDAY, SEPTEMBER 14, 2022 @ 10 AM**



Live Web Cast Auction with Online Bidding Available @ [IMANAUCTION.COM](http://IMANAUCTION.COM)

**Land will be sold choice tract 1-5 with the option to buy 1 or multiple tracts**

**TERMS:** 10 % Down auction day, balance due and possession given within 45 days on all tracts except tract 1, tract 1 possession given after the 2022 crop is harvested. Buyers on tracts 2, 3 & 4 must enter into current CRP contracts. Title insurance provided by the seller. Real Estate sells with trustees' confirmation.

**TRACT 1:** 69 Acres M/L of highly productive farm ground with 57.08 cropping acres reported by FSA \* Farm lays we with majority of the soils being Mexico silt loam & Leonard silt loam \* Remainder in woods and waterway \* 2022 crop does not convey \* Farm is located less than 1/8 mile from Hwy 24 with good access on entire east boundary by County road 276

**TRACT 2:** 90 Acres M/L of farm/hunting ground bordering Hwy 151 \* 16.16 Acres M/L are enrolled in CRP until 9-30-2030 @ \$2,828.00 per year - Remainder of farm affords great hunting with heavy timber on 3 sides\* Farm has older home stead & outbuildings \* Property would also make great place to build a new home \* Majority of the soils are Keswick, Lindley, Goss & Mexico silt loams

**TRACT 3:** 12 Acres M/L of farm/hunting ground bordering Hwy 151 \* 7.22 Acres M/L are in CRP until 9-30-30 @ \$1,254.00 per year \* Farm has good access off Hwy and would make a great place to build \* Majority of the soils are Keswick & Goss silt loams

**TRACT 4:** 18 Acres M/L of farm/hunting ground bordering Hwy 151 \* 3.28 Acres M/L are in CRP until 9-30-30 @ \$574.00 per year \* Majority of the soils are Piopolis & Marion silt loams \* Great building opportunity here also & affords great hunting bordering the salt river to the south.

**TRACT 5:** 10 Acres M/L of grassland/hunting ground lying on the east side of Hwy 151 and bordering the Salt River to south - Majority of the soils are Piopolis & Marion silt loams \* Great small tract close to town with hunting and fishing.

**IMAN AUCTION COMPANY | 660-388-6235 | ImanAuction.com**


## Public Auction

**August 27th 10 am • 2705 Main St Unionville, Mo**

**Antiques/ Household:** Ammo box, Griswold Lodge and other skillets, Pioneer turntable, Sanyo stereo, mic stands, KK meat grinders, ball cards, all American canner, tv tubes, Avon bottles, wagon, dressers, Philco tv, bed, Duncan Phye table, rugs, treadmill, pots, pans and dishes, decor, kitchen items, gun cabinet, microwave, pots and pans, dorm fridge.

**Tools/Outdoor:** there are several camping items, new inflatable kayak and boat, Pearson bow and arrows, 10' angler old town kayak, like new Ancheer electric bike, several power and hand tools, tool boxes, log chains, sockets and wrenches, gas cans, wood stencil maker, air pigs, wheelbarrow, plumbing supplies, 2 Dolmar chainsaws, Stark chainsaw, McCulloch chainsaw, several yard tools, saws clamps, table top drill press, Fiskars splitting maul, large bolt cutters, Red Ox wood chipper, new 4k generator, hard plastic extension ramps, yard seeder, backpack sprayer, several tools of all kinds, Food and restrooms available. Indoor sit-down style auction. Check out pictures and full listing on our Facebook page.

**SEE OUR FACEBOOK PAGE FOR PHOTOS**



**ALTISER**  
 AUCTION & APPRAISAL  
 KRIS ALTISER  
 660-626-4960



## FIND THE RIGHT RIDE FOR THE RIGHT PRICE


*Find the stuff you want and sell the stuff you don't in the local newspaper classifieds.*

## FARM RETIREMENT AUCTION

**TIMED ONLINE | NO-RESERVE**

**BIDDING CLOSES: MONDAY, SEPTEMBER 12, 2022**  
 STARTING AT 10:00 AM<sup>CST</sup>

**PHYSICAL ADDRESS: 20013 HWY W, MILAN, MO 63556**



**HIGHLIGHTS:** '13 JD 6125M MFWD tractor, 2,174 hrs.; '04 JD 567 round baler, 20,561 bales; '13 JD 835 mower conditioner; Vermeer R2300 24' twin hay rake; Frontier TD1316 4 basket hay tedder; Shop built 6 bale hay trailer; '98 JD 1518 15' batwing; Redline 21' pasture harrow; 6' pasture harrow; JD RG630 6-row cultivator; International 340 4-bottom plow; Kewanee 8' 3-pt. blade; Brillion 2500 11' chisel; '49 Montgomery Ward 531 10' aluminum barge wagon; M&W 10' steel barge wagon; 300 lb. gravity wagon; JD 40 manure spreader; My-D Han-D UTV feeder; 3-pt. post hole digger; Koehn calf warming hut; Phoenix BB-125 creep feeder; 3-pt. bale unroller; B&W feed bunks; Bale rings; Water tanks; B&W mineral feeders; 3-pt. 46" bale spear; QLF liquid feed tank; Misc. pipe gates; Misc. corral gates; Vassar 44" bale spear; Steel 6.5' fitting chute; 2001 Honda Rancher ES 4wd ATV, 6,274 miles; Dayton 37C12 generator; Bin auger; 100 gal. steel transfer tank; 18.4-38 tires & rims; AC/DC welder; Reese camper hitch

**GAYLORD E. PACE**  
 EQUIPMENT QUESTIONS: GAYLORD (816) 835-2124  
 Auction Manager: Cody Holst (217) 242-8747

**SULLIVAN AUCTIONEERS, LLC** (844) 847-2161  
[www.SullivanAuctioneers.com](http://www.SullivanAuctioneers.com)  
 License #444000107

# NEMO Trader Classified COUPON

## 2 Classified Ads for \$5.00

20 cents per word over 20 words

For an additional \$1.00 run in the Kirksville Daily Express one time.

For an additional \$2.00 run in the Saturday Kirksville Daily Express and Kirksville Crier one time each.

Must be Mailed in or brought in along with payment

*Picture Ads Not Included with Coupon!*

### Choose Classification

<input type="checkbox"/> Agri-Business	<input type="checkbox"/> Real Estate	<input type="checkbox"/> Transportation
<input type="checkbox"/> Announcements	<input type="checkbox"/> Rentals	<input type="checkbox"/> Yard Sales
<input type="checkbox"/> Employment	<input type="checkbox"/> Real Estate Sales	<input type="checkbox"/> Auctions & Estate Sales
<input type="checkbox"/> Financial	<input type="checkbox"/> Recreation	
<input type="checkbox"/> Merchandise	<input type="checkbox"/> Services	

**Ad No. 1 Each Box Represents a Word (20 words or less)**


**Ad No. 2 Each Box Represents a Word (20 words or less)**


Name \_\_\_\_\_

Mailing Address \_\_\_\_\_

Phone Number \* \_\_\_\_\_  
 this is required\*

**PO Box 809 Kirksville, MO 63501 • 660-665-8500**



**McAfee Auction Service, LLC**  
 375 S Johnson • Kahoka, MO  
 660-727-3796  
 www.mcafeeauctionservice.com

# LIVE ONSITE PERSONAL PROPERTY AUCTION

**SATURDAY, AUGUST 20<sup>TH</sup> - 10 AM**

SALE CONDUCTED AT 23001 E. MAIN STREET, KAHOKA, MO



Selling JD X500 Multi Terrain Series lawn mower, only 251 hours; Kawasaki Prairie 700 4wd four wheeler; 2001 5'x8' utility trailer; hunting related; few pieces of antique furniture; nice selection of common household furniture, collectibles, stoneware, toys and much more.



**WALTER & PAT LASH AND VERA GARRELLS, SELLERS**



**McAfee Auction Service, LLC**  
 375 S Johnson • Kahoka, MO  
 660-727-3796  
 www.mcafeeauctionservice.com

# TIMED ONLINE ONLY ESTATE AUCTION

**LOTS START CLOSING AT 10 AM THURSDAY, AUGUST 25<sup>TH</sup>**

PICK UP LOCATION: 707 N MARTIN AVE, KAHOKA, MO



Selling a nice selection of household furnishings, collectibles & lawn related. View catalog & terms on our website.



**BID NOW!**

**THE FAMILY OF MAXINE HYDE, SELLERS**



**McAfee Auction Service, LLC**  
 375 S Johnson • Kahoka, MO  
 660-727-3796  
 www.mcafeeauctionservice.com

# Clark County, MO LAND AUCTION

Sale conducted at the CARE Building located at 451 N. Vine St. Kahoka, MO

**110 ACRES/3 TRACTS**

Lying in Section 26, Twp 64N, R8W

- Tillable Cropland Acres
- CRP Income
- Recreational Lake
- Building Sites



**Tuesday, August 30<sup>TH</sup> at 6 PM**

**JUDY KLEINE, SELLER**



**McAfee Auction Service, LLC**  
 375 S Johnson • Kahoka, MO  
 660-727-3796  
 www.mcafeeauctionservice.com

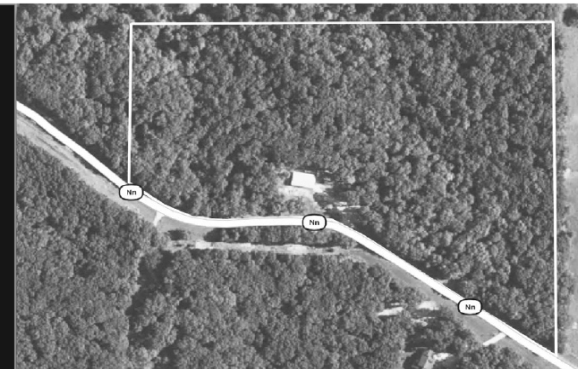
# Clark County, MO LAND AUCTION

Sale conducted at the CARE Building located at 451 N. Vine Street, Kahoka, MO

**21 +/- ACRES/ 1 TRACT**

Lying in Sect. 23, Twp 66N, R8W Clark County, MO

- Excellent Building Site
- Established Utilities
- Shop Building
- Hunting



**Thursday, September 1<sup>ST</sup> at 6 PM**



**DAN LAGE ESTATE**



**McAfee Auction Service, LLC**  
 375 S Johnson • Kahoka, MO  
 660-727-3796  
 www.mcafeeauctionservice.com

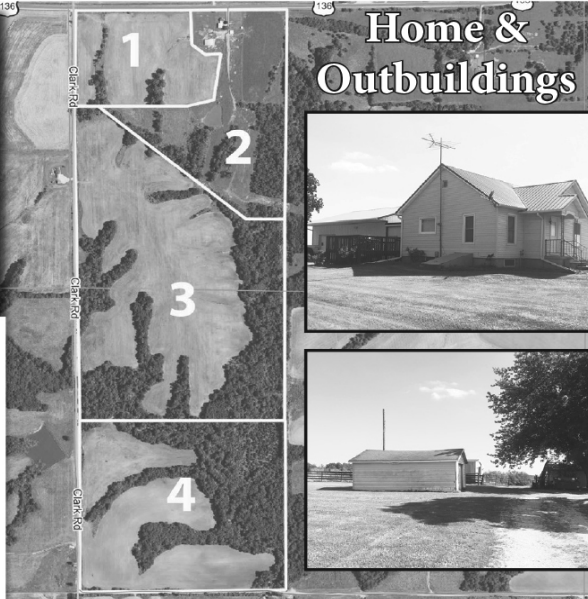
# Clark County, MO LAND AUCTION

Sale conducted at the VFW located at 123 W. Monroe Street, Memphis, MO.

**217 ACRES/4 TRACTS**

Lying in Sect. 7 and 18, Twp 65N, R9W Clark County, MO

- Tillable Cropland
- Grassland
- Recreational Hunting



**Home & Outbuildings**



**Thursday, September 8<sup>TH</sup> at 6 PM**

**THE FAMILY OF TERRY JONES, SELLERS**



**McAfee Auction Service, LLC**  
 375 S Johnson • Kahoka, MO  
 660-727-3796  
 www.mcafeeauctionservice.com

# TIMED ONLINE ONLY ESTATE AUCTION

**LOTS START CLOSING AT 10 AM THURSDAY, SEPTEMBER 8<sup>TH</sup>**

PICK UP LOCATION: 10272 HWY. 136 ARBELA MO. (COUNTY LINE)



Selling JD 4440, QR, Reads 7278 Hrs; Kubota 900 Diesel, 1331 Hrs; Equipment, Skidsteer, Boat, Tools & Farm Related, Oakwood Furniture, Household Misc.



**PREVIEW: SATURDAY AUG. 27<sup>TH</sup> 10 A.M.- NOON**

**THE FAMILY OF TERRY JONES, SELLERS**

**ADDITIONAL DETAILS, PHOTOS & AUCTIONS ONLINE!**