

**FREE**

NEW EDITION EVERY FRIDAY!  
VOL. 29 • NO. 88 • SEPTEMBER 30, 2022

# NEMO *Trader*

**THE NEMO TRADER**

PO BOX 809 • KIRKSVILLE, MO 63501 • PHONE 660-665-8500

Web Site: [nemotrader.net](http://nemotrader.net) • Email: [sales@nemotrader.net](mailto:sales@nemotrader.net)

A WEEKLY ADVERTISER SERVING ALL OF NORTHEAST MISSOURI AND THE SURROUNDING AREA

**LANCASTER LUMBER INC.**

Lancaster, MO.  
1-800-424-5071  
LAN-DOW BUILDINGS

[www.lancasterlumber.com](http://www.lancasterlumber.com)



**WE SELL AND INSTALL GARAGE DOORS**

**Miller LUMBER**

**FULL WARRANTY**

RESIDENTIAL & COMMERCIAL • 641-898-2227

**CUSTOM NO TILL GRAIN DRILLING**

SPECIALIZING IN COVER CROPS  
Devon Zimmerman  
660.464.1324

**-CUSTOM-HARVESTING**

- JD Equipment
- Grain Cart with Floats
- Mapping Available
- Local & Long haul trucking

**515-782-4288**

**FARM & RANCH.**

ELIZABETH GREGORY  
660.621.2136

[missourihomeandfarm.com](http://missourihomeandfarm.com)

**CENTURY21** Lifetime Realty

1605 Baltimore, Suite A  
Kirksville  
660.665.5678

**KEEP EM IN**

FORD, CHEVY, DODGE, GMC, WE HAVE SOMETHING FOR EVERYONE.

HEAVY DUTY REPLACEMENT BUMPER IN STOCK

(620) 215-5770  
Luke West - Queen City, MO

Large selection of heavy-duty pipe and steel supplies for all your livestock needs! We build Fence, too!

**CALL TODAY TO RESERVE YOUR SPOT**

**LET US HELP you SELL your ITEMS!**

PLACE A CLASSIFIED IN THE **Nemo Trader TODAY!**



## NEMO Trader Classified COUPON

**2 Classified Ads for \$5.00**

20 cents per word over 20 words

For an additional \$1.00 run in the Kirksville Daily Express one time.

For and additional \$2.00 run in the Saturday Kirksville Daily Express and Kirksville Crier one time each.

Must be Mailed in or brought in along with payment

*Picture Ads Not Included with Coupon!*

### Choose Classification

- Agri-Business
- Announcements
- Employment
- Financial
- Merchandise
- Real Estate
- Rentals
- Real Estate Sales
- Recreation
- Services
- Transportation
- Yard Sales
- Auctions & Estate Sales

Ad No. 1 Each Box Represents a Word (20 words or less)


Ad No. 2 Each Box Represents a Word (20 words or less)


Name \_\_\_\_\_

Mailing Address \_\_\_\_\_

Phone Number \* \_\_\_\_\_  
this is required\*

PO Box 809 Kirksville, MO 63501 • 660-665-8500





**FOR SALE:**  
Outstanding Black Simmental, 18 months old Bulls. BIG rugged bulls ready for heavy service.

**DRAKE SIMMENTAL**  
Larry Drake • Centerville, Iowa  
PHONE: 641-895-9422

**FOR SALE**  
AI Sired Angus Bulls, 14 & 18 Months Old.  
Harold Trump  
660-341-5730

**Cattle**  
Registered Polled Hereford Bulls. Sired by well known bulls. 17-20 months of age. \$3500. Phone 660-216-0068


**NEMOTRADER.NET**

**AGRI-BUSINESS**  
**Equipment & Supplies**  
Allis Chalmers D14, narrow front, very straight, original, non running from setting, engine is not stuck, \$1250. 217-257-1385  
Mayrath 10"x65 hydraulic lift swing away hopper; Westfield 8"x61 swing away hopper hydraulic lift; other augers. 217-658-4761.

Allis Chalmers 7' pull type rotary brush cutter, 540 pto, hydraulic cylinder and manual lift, \$750.00. 217-257-1385.

**IHC 1020 25'** platform; New Holland 973 25', 20'; Gleaner 500 20', 14' for F2; Massey Ferguson 330N corn head. 217-658-4761.

**Animal Housing, Hay Storage & Much More!!**






**Skylight Fabric Structures**  
20749 State Highway VV  
Ethel, MO 63539  
660-486-3250  
833-482-8862

**WE GOT YOUR NEEDS COVERED!**



**FARM TARPS TRUCK TARPS HOOP BUILDING COVERS**

**Troyer TARP MFG.**  
**660-486-3301**  
20264 STATE HWY. VV • ETHEL, MO 63539

**Equipment & Supplies**  
IHC 5 1/2' pull type brush cutter, 540 pto, cylinder, \$375.00. Farmall 2 point fast hitch drawbar, \$125.00. 217-257-1385.

**Equipment & Supplies**  
Corn heads-Drago 830; Gleaner 3000 630 with meter corn reel; Huger 630; black 830 for L, M or R. 217-658-4761.

**Equipment & Supplies**  
Farmall 706 1966 gas, factory wide front, good TA, 3 pt., flat tops, DH, excellent 16.9x34 make great chore tractor, runs good, \$5,200. 217-257-1385

The perfect fit for your farm.



© 2020 CNH Industrial America LLC. All rights reserved. New Holland is a trademark registered in the United States and many other countries owned by or licensed to CNH Industrial N.V. its subsidiaries or affiliates.

New Holland T5 Series tractors are feature-packed, high-power 4WD tractors that'll fit right into your operation. Their compact design and turning radius make them easy to maneuver, so you can work in tighter places. An optional semi-powershift lets you find the perfect speed - make eight push-button powershifts without a shift lever range change. The T5's deluxe VisionView™ cab and Comfort Ride™ cab suspension offer ultimate comfort and visibility.

Stop by today to find the T5 Series tractor - from 93 to 99 PTO hp - that's the perfect fit for you.

Or visit [newholland.com](http://newholland.com) to learn more.

**NEW HOLLAND AGRICULTURE**

**-NEW TRACTORS-**

Havana | New Holland Workmaster 50 | ROPS, 1 REMOTE...CALL  
Bowling Green | New Holland Workmaster 60 | 60HP, MFD, 4WD, 540PTO...CALL  
Bowling Green | New Holland Workmaster 70 | 70HP, 1 REMOTE, 540PTO...CALL  
Quincy | New Holland Workmaster 75 | ...CALL  
Quincy | New Holland T5.120 | 2 SPEED 540/1000 PTO...CALL  
Bowling Green | New Holland TS6.140 | 540/1000 PTO, 14.9R24 & 18.4R34...CALL  
Quincy | New Holland T8.350 | 5 ELEC REMOTES, 1000PTO, 480/80R50, 420.85R32...CALL

**-USED TRACTORS-**

Brookfield | Massey Ferguson 180 | 2WD, LOADER WITH BUCKET & SPEAR... \$8,900  
Quincy | Ford 4630 | 2738HRS, 2WD...\$13,900  
Quincy | New Holland T5050 | 3125HRS, CAB, LOADER...CALL  
Quincy | New Holland Workmaster 70 | 540HRS, LOADER...CALL  
Bowling Green | John Deere 5095M | 2015, 2 REMOTES, 1495HRS...\$57,000  
Hannibal | International 1066 | 1975, LOADER, BUCKET, BAIL SPEAR, 5126HRS...CALL  
Brookfield | Massey Ferguson 6499 | 2009, MFWD, DUALS, DOULBE WORK LIGHTS, 3500HRS...CALL

**-USED CARTS-**

Hannibal | Kinze 840 | 1997, TARP, ELECTRIC SCALES...\$22,500  
Hannibal | Kinze 840 | 2002, FIRESTONE TIRES, ROLL TARP, 30.5L-32...\$17,500

**Quincy Tractor**  
**Hannibal Tractor**  
**Bowling Green Tractor**  
**Havana Tractor**

833-774-1606  
[www.QuincyTractorLLC.com](http://www.QuincyTractorLLC.com)



**Equipment & Supplies**

Farmall 706 gas, 1966, 72 HP, factory wide front, flat top fenders, fast hitch, new seat, lot of recent work done with new parts, runs good with Dunham Lehr hydraulic bucket loader, \$6500. 217-257-1385

Farmall M, Schwartz wide front, 15.5x38 Armstrong, 75% tread, good rims, O.D. transmission, stored inside, non running, \$1400. 217-257-1385

Call us for all your advertising needs. 660-665-8500.

**Buckman Machinery**



**MF 235 Diesel**, 3000 hrs, restored, new rubber, hydr valve, sharp looking, **\$5,750**



**Woods 3180 Batwing**, 15', 1000 PTO, laminated tires, chains, field ready **\$12,500**



**John Deere 4455**, CAH, QR, 20.8x38 90%, 8000 hrs, 2 owners, very straight, with or without 148 Loader, **\$39,500**



**John Deere 7230** power quad, reverser, JD 741 Loader, 7400 hrs, above average condition, **\$69,500**



**John Deere 4020**, 1966, powershift, 85% rubber, with JD 158 Loader, QT bucket & bale spear, one owner, 9017 hrs, **\$17,950**



**Bush Hog 12715 Legend**, bat wings, 1000 PTO, 4 yrs old, in the field now, **\$12,250**



**John Deere 5320**, MFWD, roll bar & canopy, 6500 hrs, well maintained, 95% rubber, JD 541 Loader available. **\$22,500**

**573-881-3557**

**BWS Brad's Welding Shop**  
12673 Almond Ave.  
Marceline, MO 64658  
**660-376-1158**

• Hay Liner Trailers  
• Red line Harrows  
• Continuous Panels  
• Bale Feeders  
• Arrowquip Cattle Equipment

[bradsweldingshop.com](http://bradsweldingshop.com)

**OVER 80 FANS OVER 30 HEATERS**

**FANS**

- 12" 1 hp .....\$642
- 18" 3 hp .....\$1364
- 24" 5-7 hp .....\$2082
- 24" 7-10 hp .....\$2363
- 26" 10-15 hp .....\$2961
- 28" 10-15 hp .....\$2994
- 10 hp Centrifugal .....\$3457
- 10 hp Centrifugal 3-Phase .....\$3234
- 15 hp Centrifugal 3-Phase .....\$3662
- Used 24" fan and transition .....\$950

**HEATERS**

- 24" Liquid - Thermostat .....\$2383
- 24" Liquid-Mod Valve .....\$3021
- 26" Liquid-Thermostat .....\$2428
- 28" Liquid-Thermostat .....\$2472
- 28" Liquid-Mod Valve .....\$3120
- 28" Super Low-Temp .....\$1928
- Centrifugal Liquid-Thermostat .....\$2630
- Centrifugal Super Low-Temp .....\$1976

**TRANSITIONS**

- 24", 28", and Centrifugal .....\$737

**STIRRING MACHINE**

- 36" Fastir w/3 Down Augers .....\$8905

**DOWN AUGERS**

- 17"4" .....\$254
- 20" .....\$287
- 24" .....\$386

**GRAIN SPREADERS**

- Gravity Grain Spreader .....\$972
- Used Spread-All Spreader .....\$450

**NUMEROUS SUMPS, FLIGHTS, POWER HEADS, AND ELECTRIC MOTORS ON HAND!!**

**GRAIN BINS SUPPLY**  
"The Grain Bin People"  
**CAIRO, MO (660) 263-6700** **VANDALIA, MO (573) 594-2167**

*Your Local*  
**FARM SUPPLY SOURCE**  
NUTRITION • MEDICAL • FARM • PET • APPAREL

*Featured Product*

**10' BUNK FEEDERS**  
**\$15 OFF**  
THIS MONTH

Hometown Animal Health has provided quality products, expert knowledge, and friendly customer service to northeast Missouri and surrounding areas. We are a full-service nutrition, medical, and farm supply source carrying complete lines of animal feed and supplies, farming equipment, agricultural parts, lawn and garden tools, work apparel, and much more!"

**Hometown ANIMAL HEALTH**  
Feed • Medical • Farm & Pet Supplies • Footwear & More  
website: [hometownanimalhealth.com](http://hometownanimalhealth.com)  
**660-465-2967**  
18743 US Hwy, 136 Memphis, MO 63555  
"on Hwy 136 west of Memphis"  
Monday-Friday 8pm to 5pm  
Saturday 8am to 1pm

**Equipment & Supplies**

Fall fertilizer organic chicken litter NPK monthly delivered trailers, \$125.00/ton. Also high calcium lime. Call for dry fertilizer prices. 800-807-9612.

Delta L shaped 105 gallon steel fuel tank with Gas-boy pump, \$400.; 100 gallon fuel tank, manual pump with filter, \$350.. 217-257-1385.

Gleaner 630 for L, M; Massey Ferguson 1163; 1144; 1183 adapt to John Deere, New Holland 974 6RN; other heads. 217-658-4761.

450 A&L Grain cart, 450 bushel, \$4,500 OBO. 641-628-4663

Are you having a garage sale or rummage sale? Call us to advertise. 660-665-8500.

**Green Acres Sew & Vac**  
221 W Grand Ave.  
Memphis, MO  
660-465-7131  
[greenacressewvac.com](http://greenacressewvac.com)

**Equipment & Supplies**

John Deere 590 Harvest flow grain cart, \$4500.00; Flicker 9500 grain cart, \$4000.00; Flicker 9600 grain cart, \$3500.00. 217-658-4761.

John Deere 930 poly divider, \$3000.00; Head cart for John Deere 30' flotation tires, \$750.00; smaller head carts. 217-658-4761.

New holland #475 manure spreader, 540 pto, outstanding floor that is original, metal sides, ready to use, \$3200. 217-257-1385.

NH3 14 knife DMI 4300 WT on M and wings, raven cooler closing wheels monitor; Krause 30' disk, \$2000.00 disk. 217-658-4761

Progressive 12 knife NH3 2 no till cutters in front of each knife, raven cooler, markers monitor. Closing wheels for strip till. 217-658-4761.

AC 3 bottom snap coupler plow, \$200.00, Kewanee 8' snap coupler blade, \$325.00. AC D17's stored inside, non running. 217-257-1385.

Landoll 7430 33' verticle tillage rolling basket, hyd for aft; vertical tillage GP 3000 turbo till rolling basket. 217-658-4761.

One Alliance 15.5 x 38 ply mounted on IHC double bevel rim and tube were new, 90% tread, \$550.00. 2-16.9 x 34 tires mismatched. 217-257-1385.

Pair 18.4 x 38 mounted on 9 bolt rims, off 1086, \$375 1-18.4 x 38 on DMI Super-Lock 11 rim, \$100 217-257-1385.

H Farmall tractor with a hydraulic loader. Runs good, needs paint, \$1250. Phone 660-342-1986.

Brand new 2022, 76" wide x 12' treated lumber utility trailer, 3500# axle, 2990# GVWR, ramp ate, 15" tires, mod wheels, storage box, \$2300. Accelerators since "1974", Kahoka, MO. 217-257-1385.

MC Farland RD 4030 30' vertical tillage, reel harrow rolling basket; GP 1500 drill with center point. 217-658-4761.

WANTED TO BUY: Farm Machinery and Estates. Call James L. Johnston. 573-473-4904

250 gallon water tank, sets over wheel wells of pickup bed, valve, \$150; Freeland 100 gallon poly tub tank, \$50. 217-257-1385.

**Golden Grain Bins-Spring Discount**

Grain Bins	Floors w/12" Supp. & Flashing
18'x18' 4,195bu. \$ 7,398	18'.....\$2,065 30'.....\$ 5,764
27'x21' 11,265bu. \$14,850	21'.....\$2,824 36'.....\$ 8,211
42'x24' 32,245bu. \$34,617	27'.....\$4,710 42'.....\$11,182

**GMLS Industries, Inc.**  
PH: 660-699-2179 or 620-983-2136  
[www.gmlsindustries.com](http://www.gmlsindustries.com)

**BUCKMAN MACHINERY, LLC**  
**573-881-3557**

John Deere 3020 D, 1968, powershift, 9000 hrs, very straight, 90% Good rubber, .....\$12,500

John Deere 4430, QR, 65% rubber, 6500 hrs showing, dual hydr, 6 out of 10. ....\$14,950

John Deere 752 4-Basket Tedder, low acres, field ready, .....\$2,250

John Deere 3020 Gas, powershift, 90% big rubber, dual hydr, 4100 hrs, one owner, really nice, loader available .....\$8,950

John Deere 5075 E, MFWD, CAH, with JD H240 SL Loader, 940 hrs, same as new, .....\$41,500

Ground Driven JD Manure Spreaders, Refurbished, .....\$1,750 Choice  
**Loaders & Duals available for many**

**LOLLI LIVESTOCK MKT, INC.**  
**Special Calf & Yearling Sale**  
**Tuesday, Oct 4 - 11am**

120 hrs 650-750lbs(load) 40 str/hfrs 600-700lbs  
85 hrs 650lbs (load) 40 str/hfrs 500-700lbs  
80 hrs 700lbs (load) 35 str/hfrs 600-700lbs  
65 str 825lbs (load) 30 str/hfrs 600-700lbs  
60 str/hfrs 400-600lbs 30 str/hfrs 600-700lbs  
60 hrs 650lbs 25 str/hfrs 600-700lbs  
58 str/hfrs 500-700lbs 25 str 500-700lbs  
50 str/hfrs 500-700lbs 25 str/hfrs 500-700lbs  
50 hrs 650lbs 15 str/hfrs 600-700lbs  
40 str 700-900lbs 5 str 900-1100lbs  
40 hrs 600-700lbs 5 str 500-600lbs  
40 str/hfrs 600-700lbs

*This is only a partial listing, many more by sale date.*

Cafe Open **Lolli Livestock Market, Inc.** Cafe Open  
704 Main st \* Macon, MO \* 660-385-2516 [www.lollibros.com](http://www.lollibros.com)  
Frankie 660-651-4040 \* Tim 660-651-3496 \* Joseph 660-346-9711  
Jordan 660-346-0410 \* Cody 660-676-9392 Cattle accepted on Sundays

**Edina Livestock Sales**  
Edina, Missouri

**Friday, September 30th**  
Special Feeder Calf Sale

**Friday, October 7th**  
Special Feeder Calf Sale

To Consign For Any or All Sales or For Information Call:  
Owner - Kevin Strange • Cell: 660-341-9974  
Ryan Strange • Cell: 660-341-9721  
Sale Barn: 660-397-9999

**Field Reps:**  
Bill Tom Hall 660-342-5420 Mike Bronestine 660-341-9965  
Jason Bichsel 660-216-0373 John Powell 660-341-1717

**Livestock**

Ewe lambs for sale, half Hampshire, half Dorset/Texel, foot-rot free flock. No Sunday Calls 314-330-3474

**NEMO ADS SELL!** Call for more information and specials. 660-665-8500.

**Livestock**

Fish for stocking ponds. Catfish, Grass Carp, Crappie, Bluegill, Redear, Bass and minnows. Heindselman Family Farms. Call Greg 660-341-5692.

Wanted: team Suffolk Punch horses at a reasonable price. State price/information. Sam Hershberger, 850 NE 82nd ave, Galt, MO 64641.

Two Katahdin cross rams, two and three years old, \$300.00 each. Sam Hershberger, 850 NE 82nd ave, Galt, MO 64641.

**Hay/Feed/Seed**

5'x6' round bales, net wrapped mixed grass hay, \$60.00 per bale. 217-577-4594.

Round Bales: 9 1/2 bales alfalfa grass hay, 1st cutting; 13 bales alfalfa grass hay, 2nd cutting; 14 1/2 bales 90% alfalfa, 2nd cutting. 660-341-4031.

**NEMOTRADER.NET**

**EMPLOYMENT Agriculture**

Wanted to do tree topping and complete removal of all trees, also do shrubbery. 660-591-5034 or 660-591-5961.

**Education**

Part-time help needed, 2 days week, 6:15 am-2:30 pm. Must be able lift 50 pounds and sub. Apply Novinger School.

**Work Wanted**

Wanted to do tree topping and complete removal of all trees, also do shrubbery. 660-591-5034 or 660-591-5961.

**Professional**

Part-time help needed, 2 days week, 6:15 am-2:30 pm. Must be able lift 50 pounds and sub. Apply Novinger School.



**fb farmbank**

*Growing Together*

Green City Milan Kirksville  
 660-951-8430 • 660-951-8432 • 660-951-8431

www.farmbank.com

Clothing

**LOCALLY OWNED & OPERATED!**

**D&J'S**  
 SCREEN PRINTING & embroidery studio

**SCREEN PRINTING  
 EMBROIDERY  
 SHIRTS + HATS  
 TROPHIES, AWARDS & PLAQUES  
 BANNERS  
 AND MORE!**

**660.665.8001**

**KIRKSVILLESHIRTS.COM**

Call us for all your advertising needs. 660-665-8500.

Building Supplies

**Premium Metal Roofing**

**AW Metal Inc.**  
 Metal Roofing Headquarters

641-664-3990 • ammetal.net

**LAN-DOW BUILDINGS**

**"We Build To Suit Your Needs"**

**"Custom Built"**

Pole Barns • Garages • Utility Buildings

"H" Don or Dick Middleton

**Memphis Lumber Co.**

1-800-337-5858 • 660-465-8595

Fax: 660-465-8596

**KEIM LUMBER COMPANY LLC**

**COMPETITIVE PRICES • FREE ESTIMATES**

- COMPLETE BUILDING PACKAGES
- WINDOWS AND DOORS
- INSULATION • DRYWALL
- DELIVERY

13625 St. Hwy 3 LaPlata, MO

**ATTENTION HUNTERS**

Deer Season is Here!

**ITEMS FOR SALE:**

- Crossbows • Ammo • Deer Rifles

Call 217-577-9538

Miscellaneous

Garage Door and rails, 10', white, 4 panels, 2 windows, currently in Morton garage, \$300.00 660-341-0226

Garage Door and rails, 10', white, 4 panels, 2 windows, currently in Morton garage, \$300.00 660-341-0226

GE smaller chest deep freeze, \$135, kitchen table, 2 leafs and chairs, \$75, 6 vintage barrel style chairs, \$5 each, curio lighted cabinet, \$45, china hutch, \$50. Futon, chest of drawers, utility cart, desk, \$10 each, Kahoka area, much more. 217-257-1385.

Tomatoes, beans, squash, onions, potatoes, water melons, canning tomatoes. Schmucker Produce, 7 miles North of Kirksville to Ft. Madison Way.

Fresh local cooked sorghum, 3 miles West Laplata, 156, 1/2 mile South Iceberg, 1/2 mile West Hanover. Raymond Kaufman.

Musical Instruments

Remington bol 30-06, used older model. Used 30-30 older model. Winchester marlin, etc. Both in excellent condition. 660-292-0471.

Furniture

Vintage Drexel country french carved fruitwood dresser, glasstop, french carved mirror, very fine condition. In storage last 25 years. 641-208-7353.

Sports Equipment

Hunting equipment sale, box blinds, trailer blinds, tree stands, ladder stands, deer, goose decoys, 10 point cross bow, Obsession Defcon 6 bow and case, Ozonics HR-200, Savage muzzle loader, guns, rifles, deer antlers. 641-208-7353.

Sports Equipment

Local dealer for Lazyman fiberglass deer blinds. Pricing starting at \$1,299.00. Several models to choose from Heindselman Family Farms. 660-341-5692.

3 Boxes of 257 Weatherby Rifle shells; Marlin 881 22 Long Rifle, for sale. 660-651-3722

Please place your classified ads on the NEMO website. Our web address is nemotrader.net

MERCHANDISE

Pets & Supplies

3 Aussie Blue Merle pups, ready to go by September 28th. Will be up to date on shots. 660-973-3127

Lovable 8 week old red German Shepherd male puppy. Had shots and registered, pet quality. \$100. Call 660-651-4846.

6 Golden-Doodles, nine weeks old, all shots; 8 Aussie-Doodles, eight weeks old, all shots. 641-932-7310

Male and female registered English Bluetick Coon Hounds, one year old, ready to hunt with very loud voices. Extra nice, very reasonable, papers included. 660-216-1121.

AKC standard Poodle puppies. Shots and wormed, \$300 or best offer. 573-248-7957.

Adorable 12 week old Shiba Inu male puppy. Vaccinated and registered, pet quality. \$100.00. Call 660-651-4846.

Welsh Corgi puppies, AKC Registered, born 8/26/22, up to date on shots, 2 females, 2 males, 3 black-tri's, 1 red, available on 10/21/22. 660-988-1806

Are you having a garage sale or rummage sale? Call us to advertise. 660-665-8500.

**HARRISON FISHERY**  
 POND & LAKE STOCKING

**HARRISON FISHERY, INC.**  
 IS A FAMILY OWNED AND OPERATED BUSINESS.

**WE STOCK MOST SPECIES FRESHWATER, GAME & BAITFISH**

**CONTACT US FOR A PRICE & DELIVERY 660-423-5482**

[www.harrisonfishery.com](http://www.harrisonfishery.com)

REAL ESTATE RENTALS

Apartments

Apartments for rent Gorin and Newark. One bedroom, one bathroom. No Pets. Monthly \$500.00/1 person. Contact 573-767-5436. Applications required.

REAL ESTATE SALES

Homes For Sale By Owner

Greentop MO "AS IS" 31.8 AC 2bed/ 2bath 2 car garage partially finished upstairs full basement wood-stove some recent updates 40x60 barn \$252,500 Cash/prequalified only No realtors please.MAC 660-342-1416

Mobile Homes For Sale

I Buy.....used mobile homes. Call or text 573-338-6250 or email GregS.CDH@outlook.com

We Have Mobile Homes - instock new arrivals (8) homes, need to go as soon as possible! 573-499-9993 columbiadiscountshomes.com

[NEMOTRADER.NET](http://NEMOTRADER.NET)

Acres & Lots-Sales

**69 ACRES M/L 2 TRACTS**

**ONLINE REAL ESTATE AUCTION**

**OCTOBER 16, 2022**

25965 Mike Road • Marcelline, MO 64658

Due to the death of Harold and Nora Kornbrust we will sell the following at Public Auction. **AUCTIONEERS NOTE:** Nice combination Farm with home sites and great hunting call me today for more information 660-788-3333. This will be an online only auction check out missourilandandfarm.com for info and bidding procedure. **TERMS:** a 5 percent buyers premium will be added to the final bid and that will be the contract price. 10 percent down after entering into Real Estate contract. All property sold as is where is and owners have right to accept or reject final bid. Statements by Auction Co. take precedent over all ads. Auction CO and sellers not responsible for internet failure. Auction starts Oct 7 and ends OCT 16 at 6 PM Call 660-788-3333 for showing and bidding info.

**Tract 1:** 42 acres m/l of pasture/hunting ground with some open area. There is an older home on the property and a building in need of some repair. Great opportunity to purchase a versatile property with some work you could have tillable, hunting, and a cabin in good area for deer or add to your farm operation.

**Tract 2:** 27 acres m/l perfect smaller hunting tract with good woods and small creek running through, open hay/tillable ground add to the property.

**KORNBRUST HEIRS, SELLERS**

**MISSOURI LAND AND FARM AUCTIONS**  
 DAVE ATKINSON 660-788-3333 JEFF QUINN 660-734-3925

**PUBLIC AUCTION**

**THURSDAY OCT. 13 2022 1 P.M.**

11048 HWY ZZ Marcelline Mo 64658

As we have sold our farm and have moved out of the area we will sell the following at Public Auction. Auctioneers Note: Mrs. Van Drunen has a nice variety of items lots packed away come see what we find. Tractor, Kawasaki Mule, tools household and more. Something for everyone. For more info call Brian Davis 660-413-2582 or Dave Atkinson 660-788-3333 check out missourilandandfarm.com for auction details.

**TRACTOR, EQUIPMENT:** Massey Ferguson 471 tractor sells with MF loader, 1158 hrs, dual hyd, shuttle shift, nice - Modern Ag 10' pull type brush hog - 10' wheel disc - 10' 2 wheel trailer - IH pull type drill - alum lawn cart - KK 7' 3 pt tractor blade - log splitter with gas motor - 3 pt wire roller - pto seeder - misc selection of imp tires and rims - wheel weights.

**KAWASAKI MULE, MOWER, OUTDOOR ITEMS:** Kawasaki 4010 trans mule, pwr steering, 371 hrs - Craftsman Riding mower like new, 8 hrs, push mower - Cub Cadet XT1 riding mower needs belt - shelves - shovels - shingle shovel - lot cabinets - weed eaters - 12v seeder - wheel barrow - yard thatcher - lawn ornaments - tub planters - water barrel - lawn sweep - 14' ext ladder - fishing poles - tackle boxes - minnow bucket - post driver - HM Jack - 20+ cement blocks - live traps - truck tool box - receiver hitch - unlisted items.

**SHOP TOOLS:** Craftsman Table saw - lawn mower jack - grinding wheels - Wright impact sockets - hitch balls - house jack - files - rasp - line wrenches - air hose - welding helmets - c clamps - hand saws - ratchet straps - drill press - tons of hardware ie nuts, bolts, nails - gas cans - B&D radial arm saw - table saw - hyd oil - hand tools - bar clamps - copper tube - more.

**HOUSEHOLD, COLLECTABLES:** Very Nice Dinning table with leaves - Oak hutch - Oak Hd coffee, sofa, end tables - 2 rocker recliners - hide a bed sofa - love seat - mirror - older fridge - hunting coats - vacuum - blue jars - folding chairs - wagon wheels - pitcher pump - fish cooker - lots of home decor - hippos - pigs - Kirby sweeper - computer desk - lot of roasters - crock pots - electric meat slicer - microwave - more household.

**MRS. GUY (BONNIE) VAN DRUNEN SELLER**

**MISSOURI LAND AND FARM AUCTIONS**  
 DAVE ATKINSON 660-788-3333 JEFF QUINN 660-734-3925

Mobile Homes For Sale

TINY HOMES We gottem 573-881-3283

True Modulars 30 to 60 day delivery available, 3 and 4 bedroom. 573-657-7040 chateauhomes.net

Acres & Lots-Sales

22 acres Macon County, Hwy 3 and Fleetwood. Approximately 10 acres pasture, 10 acres crop, 2 acres excellent view. 573-470-1028.

**NEMO ADS SELL!** Call for more information and specials. 660-665-8500.

RECREATION

Accessories-Recreation

3 Boxes of 257 Weatherby Rifle shells; Marlin 881 22 Long Rifle, for sale. 660-651-3722

Local dealer for Lazyman fiberglass deer blinds. Pricing starting at \$1,299.00. Several models to choose from Heindselman Family Farms. 660-341-5692.

ATV's

2002 Kawaski 650 Prairie, like new condition, 2017 Honda Ruckus only 300 miles, gets 114 miles per gallon gas. 2022 Rambo E-Bike 750 Savage, new Yamaha 25 hp outboard, 4-stroke, like new. 641-208-7353.

Campers & Trailers

2021 Coachmen Catalina 323BHDSC Legacy Edition Travel Trailer RV, LIKE NEW CONDITION. PRICE \$12,500 Text me at - 813-603-0179

RECREATION

Motorcycles

WANTED TO BUY: Harley Davidson's, any year, any condition, cash money. Days 660-263-1356 or 660-537-0068

Wanted

WANTED TO BUY: Harley Davidson's, any year, any condition, cash money. Days 660-263-1356 or 660-537-0068

Call about our classified ad specials. 660-665-8500.

Air Conditioning/Heating

The Ultimate Wood Heat.

**CENTRAL BOILER CLASSIC EDGE**  
 TITANIUM HD SERIES  
 Outdoor Wood Furnace

- **More Comfort** - Thermostatically controlled wood heat.
- **Peace of Mind** - Keep the fire outside and eliminate the dangers associated with indoor wood heating.
- **Save Money** - Wood is a renewable, inexpensive and often free energy source.

**CAMPEN**  
 Heating & Air Conditioning  
 573-288-8966  
 Canton, MO

[CentralBoiler.com](http://CentralBoiler.com)



**Backhoe/Bulldozer**

**Show Me Plumbing Services**



- General Mini Excavation & Skid Steer Work
- Livestock Watering
- Waterlines & Sewer Systems
- Residential Services & General Plumbing
- Utility Trenching

Stan Schrock 660-988-1163  
Greentop, MO 660-766-2636

**Bush Hogging**

**CUSTOM CHOPPING**



ALL TYPES OF FORAGES PRESERVATIVE AVAILABLE

Devon Zimmerman 660.484.1324

**ATTENTION LAND OWNERS!**

**BUYER OF STANDING TIMBER**  
**OWNER / OPERATOR OF SAWMILL - BUY/CUT LOGS**  
**CERTIFIED - BONDED - INSURED**

TRI STATE TIMBER L.L.C.  
PH. 660-341-4921 or 660-465-2975  
353 1/2 GRAND AVE. • MEMPHIS, MO 63555



**Chat/Dirt/Gravel**

**DIRT WORK** All types of excavation, reclaiming overgrown fields, including CRP and WRP. Building site preparation, creating new trails and crossings, Food plot development and maintenance. Leveling and grading, wetland construction and maintenance. Pond and lake cleaning and construction. Call for quotes. 660-342-2701

**Construction-Services**

**SPRAY FOAM INSTALLATION!** We install open and closed cell spray foam. Strengthen your building and block drafts! Over 1 Million bd. ft. applied. Contact Lester at 641-208-7071, Spray Tex LLC 16302 192nd Street Bloomfield IA 52537

**Lawn/Garden/Landscape**

New 3 pt. tillers, heavy duty, gear driven, 7' to 12' starting at \$4,050. 660-874-4455.

**NEMOTRADER.NET**

**Home Services**

**Signature**  
Overhead Doors and Remodeling, LLC



660-785-0248

[www.signatureremodelingkv.com](http://www.signatureremodelingkv.com)

Residential and Commercial Installation and Service

**Health/Beauty/Fitness**

**MISSOURI CANCER ASSOCIATES**  
George Rae Cancer Center

**Cancer Care Close to Home.**

No Referral Needed



MISSOURI CANCER ASSOCIATES 1982-2022

**We give care. We give courage. We give hope.**

"I've never felt so comfortable in a medical community as I have with MCA. The system, the process, and EVERY staff member is amazing and always puts me at ease."  
-Madelyn

"Every individual I came in contact with was friendly and caring. I have been to 3 different medical facilities and there is no comparison."  
-Joe

(866) 724-2413 | 603 W Pierce St. Kirksville, MO  
[www.missouricancer.com](http://www.missouricancer.com)

**Remodeling**

**Miller's Spray Foam**  
**DANIEL MILLER**  
21743 Lost Branch Way  
Brashear, MO 63533  
We Strive to Satisfy 660-234-2808

**Tree Service**

**TIMBER MANAGEMENT.**

Purchasing Walnut, Oak, Maple & Other Species

**WE PAY BEFORE WE CUT**

**BONDED & INSURED** Est. 1968  
**641-895-8209**

**CELEBRATIONS!** PARTY RENTAL  
KIRKSVILLE, MO

FOR RENT

- Tables & Chairs
- Tents • Bounce House
- Cotton Candy Machine & More!

660-626-5162 or 660-665-9380

**CUSTOM GRAIN HARVESTING**

Call Steve



**660-342-5678**

**LIME SPREADING SERVICE**

Equipped with variable rate



**PEAVLER TRUCKING LLC**  
Alan Peavler, 660-216-0618 - Jared Peavler, 660-342-7685

**JAGUAR LUMBER**

Attn: Land Owners

Buyer of Timber  
\*All species also Select yard Trees/Logs over 40" diameter,  
\*Trees are selectively cut to insure optimal Forest Regeneration.

Certified & Bonded | Lavon Gingerich 641-664-2080

**Miscellaneous**

SCOTT HUSKEY'S HOME SERVICE R-10 Foundation Enclosure Systems for manufactured, modular, & site built homes. Saves on utilities and prevents freeze ups. General maintenance and repairs since 1972 573-696-3468 "GO DAWGS"

**TRANSPORTATION**

**Parts & Services**

New and used parts: vehicles, semi's, farm and construction equipment. Motors, tranny's, body parts, paint to match yours. Warrantied/delivery. 800-807-9612.

**VICTORY Metals & Recycling**  
Kirksville, MO 660-665-8000  
[victorymetalrecycling.com](http://victorymetalrecycling.com)

For current scrap prices call or visit our **Facebook Page**

★ **Construction/Debris Recycling**

Visit Kirksville's construction & debris recycling facility and save trips to the landfill! Take advantage of this service for solid waste removal by bringing your landfill items to Victory Metals C & D recycling facility located at 3602 N. Industrial Rd.

★ **Roll-Off Container Service**

10-20-30-40 Cubic Yard Dumpsters

3602 N. Industrial Rd., Kirksville, MO 63501  
[djanesvmr@gmail.com](mailto:djanesvmr@gmail.com)  
[www.victorymetalrecycling.com](http://www.victorymetalrecycling.com)



**Livestock**

**Creative Outdoor Solutions**

Call us for all your landscaping/hardscaping needs.  
**WE GOT YOUR COVERED! ESTIMATES ARE FREE!**

- Landscaping • Hardscaping • Trimming • Retaining Walls • Patios
- Sod Installation • Yard Seeding • Mulching • Spring/Fall Cleanup
- Fire Pits • Free Estimates • And More!

660-342-7064 • [creativeoutdoorsolutions@gmail.com](mailto:creativeoutdoorsolutions@gmail.com)



**Storage Units**

**Global Storage Systems, LLC.**

**Hand Pick Your Exact Storage Unit!**

DIMENSIONS:  
8' WIDE X 8 1/2' TO 9 1/2' TALL X 20' OR 40' LONG

**NOW OFFERING 8' LONG!**

**ALL UNITS WATERPROOF & MOUSE PROOF!**

These NEW or USED shipping containers consist of corrugated steel. LOW MAINTENANCE!

**GLOBAL STORAGE SYSTEMS, LLC**  
Located on Hwy 63, 9 miles south of Kirksville, 1 mile north of LaPlata  
660.341.7343 • 660.341.8080 • [globalstoragesystem.com](http://globalstoragesystem.com)

**AVOID INTERNET SCAMS**

**BUY OR RENT**





**COLTON'S**  
Steak House & Grill  
*We Know What's At Steak!*

1116 Country Club Drive • Kirksville, MO  
660-665-6336 • ColtonsSteakhouse.com

**MISSOURI FARM BUREAU INSURANCE**

**Chris Clark,**  
Licensed Sales Associate  
Email: chris.clark@mofb.com  
Website: www.mofbinsurance.com

AUTO HOME LIFE

Clark Agency: 115 W. Potter, Kirksville, MO • (660) 665-1956

**CONNECTIONS BANK**

Member FDIC

2817 N Baltimore St  
Kirksville, MO 63501  
660-665-7703

ConnectionsBank.com

**THINKING OF SELLING?**

**Heritage House Realty, Inc.**

CALL US TODAY!  
660-665-5638

KirksvilleRealEstate.com

**LOVEGREEN**  
GOLOVEGREEN.COM

**FARM & RANCH.**

**ELIZABETH GREGORY**  
660.621.2136

missourihomeandfarm.com

**CENTURY21** Lifetime Realty

1605 Baltimore, Suite A  
Kirksville  
660.665.5678

**JK**

**Tire & Auto Owners:**  
**Joe Dimmitt & Kelly O'Haver**  
1102 N Green St  
Kirksville, MO  
660.665.9017

**FOOTBALL SCOREBOARD**

KIRKSVILLE, HS				KNOX COUNTY, HS					
27	HOME TEAM	VS	AWAY TEAM	14	65	HOME TEAM	VS	AWAY TEAM	34
	MACON	8/26	KIRKSVILLE			SCHUYLER CO.	8/26	KNOX COUNTY	
		DATE					DATE		
40	HOME TEAM	VS	AWAY TEAM	14	50	HOME TEAM	VS	AWAY TEAM	18
	KIRKSVILLE	9/2	CHILLCOTHE			SWEET SPRINGS	9/2	KNOX COUNTY	
		DATE					DATE		
0	HOME TEAM	VS	AWAY TEAM	29	12	HOME TEAM	VS	AWAY TEAM	66
	KIRKSVILLE	9/9	SAVANNAH			NORTHLAND CHRISTIAN	9/9	KNOX COUNTY	
		DATE					DATE		
14	HOME TEAM	VS	AWAY TEAM	34	38	HOME TEAM	VS	AWAY TEAM	72
	MOBERLY	9/16	KIRKSVILLE			KNOX COUNTY	9/16	STANBERRY	
		DATE					DATE		
17	HOME TEAM	VS	AWAY TEAM	41	20	HOME TEAM	VS	AWAY TEAM	62
	MARSHALL	9/23	KIRKSVILLE			KNOX COUNTY	9/23	NORTH SHELBY	
		DATE					DATE		
N/A	HOME TEAM	VS	AWAY TEAM	N/A	N/A	HOME TEAM	VS	AWAY TEAM	N/A
	KIRKSVILLE	9/30	HANNIBAL			WORTH COUNTY	9/30	KNOX COUNTY	
		DATE					DATE		
N/A	HOME TEAM	VS	AWAY TEAM	N/A	N/A	HOME TEAM	VS	AWAY TEAM	N/A
	MEXICO	10/7	KIRKSVILLE			KNOX COUNTY	10/7	NORTHWEST	
		DATE					DATE		
N/A	HOME TEAM	VS	AWAY TEAM	N/A	N/A	HOME TEAM	VS	AWAY TEAM	N/A
	KIRKSVILLE	10/14	FULTON			ST. PAUL LUTHERAN	10/14	KNOX COUNTY	
		DATE					DATE		
N/A	HOME TEAM	VS	AWAY TEAM	N/A	N/A	HOME TEAM	VS	AWAY TEAM	N/A
	CAPITAL CITY	10/21	KIRKSVILLE			KNOX COUNTY	10/22	BISHOP LeBLOND	
		DATE					DATE		

**Travis~Noe Funeral Home**

1008 Potter Avenue, Kirksville, MO  
**660-665-1300**  
Neil & Sherry Travis, Brian Noe,  
Paulie Schmitz & Brenton Travis

**FOOTBALL SCOREBOARD**

**FOOTBALL SCOREBOARD**

SCHUYLER CO., HS				MACON, HS					
65	HOME TEAM	VS	AWAY TEAM	34	27	HOME TEAM	VS	AWAY TEAM	14
	SCHUYLER CO.	8/26	KNOX COUNTY			MACON	8/26	KIRKSVILLE	
		DATE					DATE		
40	HOME TEAM	VS	AWAY TEAM	78	0	HOME TEAM	VS	AWAY TEAM	33
	SCHUYLER CO.	9/2	PATTONSBURG			NORTH CALLAWAY	9/2	MACON	
		DATE					DATE		
46	HOME TEAM	VS	AWAY TEAM	70	26	HOME TEAM	VS	AWAY TEAM	18
	KEYESVILLE	9/9	SCHUYLER CO.			MACON	9/9	CLARK COUNTY	
		DATE					DATE		
74	HOME TEAM	VS	AWAY TEAM	30	14	HOME TEAM	VS	AWAY TEAM	49
	NORTH SHELBY	9/16	SCHUYLER CO.			PALMYRA	9/16	MACON	
		DATE					DATE		
84	HOME TEAM	VS	AWAY TEAM	26	45	HOME TEAM	VS	AWAY TEAM	6
	KANSAS CITY EAST CHRISTIAN	9/23	SCHUYLER CO.			MACON	9/23	HIGHLAND	
		DATE					DATE		
N/A	HOME TEAM	VS	AWAY TEAM	N/A	N/A	HOME TEAM	VS	AWAY TEAM	N/A
	SCHUYLER CO.	9/30	BRAYMER			MACON	9/30	BROOKFIELD	
		DATE					DATE		
N/A	HOME TEAM	VS	AWAY TEAM	N/A	N/A	HOME TEAM	VS	AWAY TEAM	N/A
	SCHUYLER CO.	10/7	KING CITY			SOUTH SHELBY	10/7	MACON	
		DATE					DATE		
N/A	HOME TEAM	VS	AWAY TEAM	N/A	N/A	HOME TEAM	VS	AWAY TEAM	N/A
	SCHUYLER CO.	10/14	NORTHLAND CHRISTIAN			MONROE CITY	10/14	MACON	
		DATE					DATE		
N/A	HOME TEAM	VS	AWAY TEAM	N/A	N/A	HOME TEAM	VS	AWAY TEAM	N/A
	NORTHWEST	10/21	SCHUYLER CO.			MACON	10/21	CENTRALIA	
		DATE					DATE		

**GREASE LIGHTNING**

TEN MINUTE OIL CHANGE

1215 N Green St  
Kirksville, MO  
660-665-6068

**DAVIS-PLAYLE-HUDSON-RIMER FUNERAL HOME & CREMATORY**

2100 E. Shepherd Ave  
Kirksville, MO 63501  
660-665-2233  
www.davisplaylehudsonrimer.com

**ANEW Realty Group, LLC**

**Kim Keyes, Broker/Owner**  
660.665.3277

AnewRealtyGroupLLC.com  
511 S. Baltimore St., Suite 8  
Kirksville, MO 63501

**NM SB NORTHEAST MISSOURI STATE BANK**

Kirksville Branch: 600 S Baltimore, Kirksville, MO 660-665-6161  
La Plata Branch: 139 S Gex Street, La Plata, MO 660-332-4317

Member FDIC northeastmissouristatebank.com

**Century 21 Lifetime Realty**

1605 S Baltimore St, Suite A  
Kirksville, MO 63501  
**660-665-5678**  
www.C21Kirksville.com

Each office is individually owned and operated.

**SHELTER INSURANCE**

AUTO • HOME • LIFE

**Shayne Thomas**  
1515 Green St.  
Kirksville, MO 63501  
660-665-4685 (Call or Text)  
ShayneThomas@ShelterInsurance.com

**KIRKSVILLE MOTOR COMPANY**

Sales (660) 956-0212  
Service (660) 956-0809  
Parts (660) 665-1936

kirksvillemotorcompany.com

3607 N. Baltimore Street Kirksville MO 63501-5128 US

**MISSOURI FARM BUREAU INSURANCE**

**SAWYER INSURANCE AGENCY**  
chad.sawyer@mofb.com

1204 S Baltimore St, Kirksville | Office: 660-956-4550



**MAPLES  
REPERTORY  
THEATRE**

**The Bikinis:  
A New Musical  
Beach Party**  
Oct. 5 - Oct. 15

**Something's  
Afoot:**  
Oct. 27 - Nov. 7

**TIS The Season:  
A Maples Rep  
Holiday  
Celebration**  
Nov. 30-Dec. 11

**2022 Season is  
OPEN  
NOW!**

Adult: \$33  
Student: \$22  
Group Rate: (12+): \$28

Season Ticket: \$162  
You Pick Four: \$120

Professional Theatre in Upstate Missouri  
102 N. Rubey St., Macon, Mo 63552  
Phone # 660-385-2924 • maplesrep.com

**Parts & Services**

Four 265/75 15 inch slightly used tires. \$30 each firm. Cooper tires, 8 ply. 660-342-1986.

**Trucks, 4x4's, SUV's**

Real nice 2000 Chevy Silverado, extended cab, from Utah, 4WD, leather interior, fiber glass bed lid, rebuilt trans w/8 year warranty, 199,000 miles, \$10,500. Milan 815-584-7972

**FOR SALE**

**1994 L9000**  
shows 137,750 miles, Cummings engine rebuilt a year ago, No Title, Very nice solid Truck.

**660-973-9781**      **\$15,000**

**FOR SALE**

1976 L8000 shows 45034 miles very good sounding CAT3208 shows its age but runs great

**\$10,000 OBO 660-973-9781**

**AUTO'S UNLIMITED**      660-665-8149 | 660-341-0965  
No Sunday Calls! | 17406 Bob Rd • Kirksville, MO

**FEATURED VEHICLES**

**1986 Bronco 2**  
with 64,000 MI cold AC  
excellent condition

**Trailer 16 ft with 2 ft dovetail**  
total 18 ft 12,000 lb capacity  
excellent condition

**\$3,850 or Best Offer**

ALL VEHICLES HAVE GONE THROUGH A 60 PT INSPECTION! STATE INSPECTED! CALL FOR MORE INFO!

# WE HAVE YOUR DREAM CAR!

**AMERICA'S  
CAR-MART**

*Keeping You on the Road*

[car-mart.com](http://car-mart.com)



**We Offer:**

- Peace of Mind Package
- Service Contract Plus
- Accident Protection Plan
- 100% Satisfaction
- Pay Your Way
- Low Down Payments
- Quality Used Vehicles
- Flexible Financing
- Hand Selected Vehicles
- Convenient Payment Options
- Start Your Approval Online
- Over 150 Locations
- 40 Years in Business
- We Buy Cars

**660-956-4849 • 2015 North Baltimore • Kirksville**



**2012 FORD FUSION**  
FWD, 4 Cyl., Silver



**2010 NISSAN ARMADA**  
RWD, 8 Cyl., Black



**2011 KIA RIO**  
FWD, 4 Cyl., White



**2012 GMC ACADIA**  
AWD, 6 Cyl., Black



**2014 DODGE GRAND CARAVAN**  
FWD, 6 Cyl., Maroon



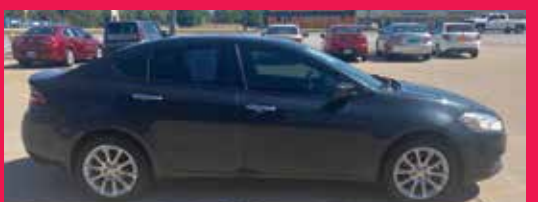
**2014 CHEVROLET CRUZE**  
FWD, 4 Cyl., Red



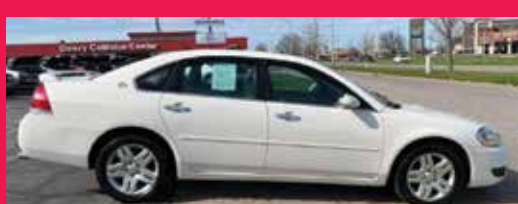
**2013 HYUNDAI GENESIS**  
RWD, 6 Cyl., Gray



**2016 KIA SOUL**  
FWD, 4 Cyl., Gray



**2014 DODGE DART LIMITED**  
FWD, 4 Cyl., Blue



**2007 CHEVROLET IMPALA**  
FWD, 6 Cyl., White



**2013 BUICK ENCORE**  
FWD, 4 Cyl., Maroon



**2007 KIA SORENTO**  
RWD, 6 Cyl., Black



**2014 CHEVY EQUINOX**  
FWD, 4 CYL., BLACK



**2016 CHEVROLET CRUZE**  
FWD, 4 CYL., BLACK



**2012 KIA SOUL**  
FWD, 4 Cyl., Silver



**2009 CHEVROLET IMPALA**  
FWD, 6 Cyl., Black



**2010 TOYOTA CAMRY**  
FWD, 4 Cyl., Silver



**2009 FORD FUSION**  
FWD, 4 Cyl., White

**AMERICA'S  
CAR-MART**

*Keeping You on the Road*



**KYLE JENNINGS**  
GENERAL MANAGER



**TRANSPORTATION**

**Trucks, 4x4's, SUV's**

2015 Chevy Silverado 1500, crew cab WT, 4x4, 5.3L, well equipped, windows, locks, tow, keyless brownstone metallic, 143,000 mile 1 owner, \$18,900. Accelerators since "1974" Kahoka, MO 217-257-1385 or 660-727-3455

2012 Ford F-350 SW standard cab, just invested \$13,000.00, better than new, XLT green gem, \$40,000.00, Milan. 660-292-0471.

Have Clutter? Need room? Call the NEMO classifieds. We can help! 660-665-8500.

**Automobiles**

**MUST SELL ALL MUST GO!**



1999 F250 Superduty with welder tool box loaded Also garage full of tools & Drill Press  
**Call 660-342-2122 or 660-216-5656**

**Judd Motors** Call 660-457-3700 Hwy 63 North, Lancaster, MO

<b>2011 Chevy Suburban,</b> LTZ, 4WD, sunroof, DVD, leather, black, 141K miles, quad seats, <b>\$16,900</b>	<b>2007 Ford Freestyle Limited,</b> AWD, leather, sunroof, 3 row seating, 220K, black, drives great, only. <b>\$3,995</b>	<b>2018 Ford Edge SEL,</b> AWD, V6, leather, only 54k miles, silver only <b>\$24,900</b>
-------------------------------------------------------------------------------------------------------------	---------------------------------------------------------------------------------------------------------------------------	------------------------------------------------------------------------------------------

**2013 GMC Sierra 1500,** SLT, crew cab, leather, 4WD, red, 140K miles, excellent, **\$19,900**

**2005 GMC 1500,** ext cab, 4wd, V8, 168k, silver, only **\$8995**

**2004 Chevy Trailblazer,** LT, 4wd, 4.2L, cloth, only 108k, charcoal, nice, only **\$6,495**

**Cumberland Building Dealer**

**www.juddmotors.com** In Business Over 75 Years Curly and Kevin Judd

**COME ONE COME ALL!**

**Community Opportunities, Inc. GARAGE SALE**  
 October 1, 2022 • 8am to 3pm  
 1001 S Osteopathy  
 Kirksville, MO  
*Something for everybody, check it out!*



1001 S Osteopathy, Kirksville 660-665-5768

FIND THE PERFECT PET FOR THE PERFECT PRICE IN THE PERFECT PLACE FOR DEALS

Find the stuff you want and sell the stuff you don't in the newspaper classifieds.



Let us help you with all your advertising needs. Don't know what to say? Call us we can help! 660-665-8500.

**HAVE A PET OR PUPPIES TO SELL?** Call us. You can even pay over the phone. 660-665-8500.

**Auction Sales**

**PUBLIC AUCTION**  
 Saturday, October 8 @ 11:00 am  
 1E Schooler Rd. Centralia, MO

**Directions:** Take Highway 124 North out of Hallsville and go 1.6 miles to Schooler Rd. Turn left on-to Schooler .8 miles to the property on the right.

**REAL ESTATE SELLS AT 10:00 AM**

13.38 acres of spacious and meticulously improved land right off black top. The entire parcel has been newly refenced with high quality woven wire and single top barbed wire. The land itself has undergone lime fertilizing treatment for healthy thick grass. Water and electric are on site with a cut in driveway up to a new 33 x 22 shop primed with electric and water and full concrete flooring. There is also a water hydrant and a Ritchie automatic waterer installed. You will not want to miss the chance to offer on this property. Please register prior to the auction.

**TRUCK, TRACTORS, MOWERS, TRAILERS:** 2020 Chevrolet Silverado 3500HD cab and chassis 4x4 dually, equipped with Knapheide flatbed, Duramax diesel w/Allison automatic transmission, just under 25,000 miles, super nice, hard to find truck; 2018 John Deere 4052M w/loader—303 hours w/transferrable warranty good until 2000 hours or October 2024; 2016 Mahindra 2538CL w/cab & loader—512 hours; Dixie Chopper Silver Eagle series lawn mower, 60" cut, 27 hp; Everide lawn mower 60" cut—3949 hours; Husqvarna lawn mower, 48" cut—132 hours; Doolittle 20' (16+4) flat bed trailer w/wench; Doolittle Master Dump 14' trailer; Doolittle Master Dump 12' trailer; 12' flat bed trailer (no title);

**TOOLS/OTHER ITEMS:** Craftsman 50hp snow blower; propane tank; spade; rakes; edger; weed eaters; hedge trimmer; dollies; seeder; leaf blower; jack; vintage signs; air compressors; stand up tool box; 3 tool boxes full of tools; impact wrench; 2 skil saws; bench grinder; battery charger; shovels; 4 chain saws; electric jig saw; electric skil saw; electric grinder; chains, towing strap; grease guns; gas cans; saw blades; lumber; flag pole kit; grass seed; garden hose; step ladder; Kenmore mini fridge; new tarp; fire extinguisher; industrial jumper cables; industrial paper shredder; brand new electric heater; gas BBQ grill

**IMPLEMENTS AND FARM EQUIPMENT:** Razorback 6' brush hog; hay fork; 6' disc; 6' cultivator/plow; 5' green blade; 6' yellow rake; quick hitch; Country Tuff 35 ton wood splitter; cattle chute; hay ring; fence panels; cattle prod;

**SELLERS:** Dorothy and the late Carl South

**TERMS:** Cash or Good Check with positive I.D.

**NOTE:** Not responsible for accidents. Announcements auction day take precedence over all printed material  
 AUCTIONEER: Kyle George 573-696-3142

**GEORGE AUCTION SERVICE** HALLSVILLE, MO  
 LUNCH SERVED auctionzip.com # 36171

**Auction Sales**

**Public Auction**  
 October 8th 10 am • 2705 Main St Unionville Mo

**Antiques/ Household:** several vintage toys, ball cards some new in box, marbles, Centerville and Moulton yearbooks, cast iron items, chrome spotlight on stand, hot wheels in package, oak table, trunk, large wood shipping box, pyrex, several boxes of kitchen and household items, kids games, 2 lift recliners, 2 dressers, desks, hot water heater, life vests, coffee tables, like new parrot cage, 3 new in box 30" plastic storage cabinets, cds, 4 flat screen tvs, christmas items, hunting clothes, 8 foot tables, entertainment center, several bicycles. Tools and shop: generator, welder, hand tools, power tools, several concrete working tools, several 5 gal buckets of urethane, weedeater, utv tires, lawn seeder, Coleman stove, deer stands, 2 solar deer feeders, knaack job box, portable bbq grill. **Expecting lots more by sale date, lots of items coming out of storage and not sure what's in the boxes yet. Preview from 2 to 5 pm on October 7th. Food and restrooms available. Indoor sit-down style auction. Check out pictures on the website at www.altiserauctionandappraisal.com**

**ALTISER AUCTION & APPRAISAL**  
 KRIS ALTISER  
 660-626-4960

SEE OUR FACEBOOK PAGE FOR PHOTOS

**LAND AUCTION**  
 BUCKLIN COMMUNITY CENTER  
 - 202 4TH STREET - BUCKLIN, MO -  
**TUESDAY, OCTOBER 25, 2022 | 10 AM**

Tracts are located just a few miles north of Bucklin on Hwy 129 (Tract 1) & Normal Rd (Tracts 2-5)

300 Acres of Cropland/CRP & Prime Hunting Land \* Great Building Locations \* Marketable Timber  
 Tracts 2-5 will sell choice farm by the acre with top bidder choosing 1 or multiple tracts!

Survey in progress on tracts 2-5 \* Exact acres will be updated when survey is completed \*  
 CRP Contracts Are From 2020-2030 \* HUNTING RIGHTS AVAILABLE THIS 2022 DEER SEASON! For more info call Iman Auction Co or Clark's Realty Co @ 660-388-6235 Or 660-788-1546



**TRACT 1:** 100 Acres m/l of heavy woods & partially open land bordering Hwy 129 - 10.75 Acres on the front portion of the farm is currently enrolled in CRP @ \$99.47 per acre with annual payment of \$1069.00 - Would make a great place to build a new home - Eastern part of the farm has heavy woods with 1 pond, trails meandering through to the back 40 that is secluded with large timber surrounding it - Excellent deer hunting - Possible marketable timber

**TRACT 2:** 34 Acres m/l of rolling crop ground/CRP and wooded draws - 12 Acres m/l is currently enrolled in CRP - Property would make great place for a new home or cabin w/ hunting retreat, older motorhome at campsite conveys with the property - Electricity is available - Tracts 2 & 3 CRP will be divided if same buyer doesn't buy both tracts - CRP acres are estimated and will be determined at closing - See maps of CRP

**TRACT 3:** 66 Acres m/l of rolling crop ground/CRP and wooded draws - 1 Pond - Heavy timber on northern portion adjoins tract 4 - 37 Acres m/l is currently enrolled in CRP - Possible marketable timber - Access of county road with great place to build home or setup camp, unlimited possibilities - Tracts 2 & 3 CRP will be divided if same buyer doesn't buy both tracts - CRP acres are estimated and will be determined at closing - See maps of CRP

**TRACT 4:** 38 Acres m/l of heavy woods, property borders county rd on the north and tract 3 on the south - Possible marketable timber - Mapping shows 97% timber

**TRACT 5:** 56 Acres m/l of rolling crop ground/CRP and wooded draws - Great access with county roads on 3 sides - Great hunting - 32.75 Acres currently enrolled in CRP @ \$102.60 per acre with annual payment of \$3360.15

**TERMS:** 10 % Down Auction Day with Balance Due and Possession Given at Closing within 45 Days. 2022 Taxes & 2023 CRP Payments Prorated to the Date of Closing - Title Insurance provided by the seller - Buyers must enter into Current CRP Contracts after closing.

**MRS. JOHN (BARB) EDDINGTON, SELLER**  
 IMAN AUCTION COMPANY | 660-388-6235 | ImanAuction.com

**PUBLIC AUCTION**

As I am residing in the Loch Haven Apartments, I will sell the following real estate, car, household items, antiques & collectibles located at 803 Holman Lane, Macon, MO which is located north of Sunset Drive on Giesseman Drive to Holman Lane on

**SATURDAY, OCTOBER 8<sup>TH</sup>, 2022 @ 10 A.M.**

Real estate to be offered for sale at 1:00 P.M. which consists of a very beautiful, nice & clean home with 3 bedrooms - 2 1/2 baths - Zero-Entry - brick home with an attached three car garage with storage room - lawn mower garage - two natural gas furnaces - two central AC units - carpet & ceramic tile throughout the home - large kitchen/dining room comb w/several nice built in cabinets - center island - microwave/convection oven w/oven underneath - countertop range - side by side refrigerator - built in dishwasher - garbage disposal - built in double sided gas log fireplace - large covered patio - 8'x12' storage shed - **TERMS: 10 PERCENT DOWN DAY OF SALE W/BALANCE DUE WITHIN APPROXIMATELY 45 DAYS W/TITLE INSURANCE FURNISHED.** This clean and beautiful home sells as is where is.

**HOUSEHOLD ITEMS:** Almond Maytag washer w/matching electric dryer - solid oak two piece queen size four poster bed complete w/large dresser w/wing mirrors - large wooden office desk - large oak dining table w/six oak roller chairs w/leather seats & backs w/matching two piece oak lighted hutch - small oak wooden linen cabinet - four wooden swivel bar stool chairs w/leather seats & backs - two mauve Lazy Boy recliners - four oak dining roller chairs - 7' tall hutch w/four glass shelves & double glass doors - brown leather three cushion divan w/matching chair and ottoman - white metal daybed - white Gibson upright freezer - double door metal utility cabinet - two wooden bookshelves w/glass doors - oak entertainment center - small wooden six drawer chest - several small wooden bookshelves - Guardian electric sweeper w/power head - two wing back occasional chairs - glass top coffee table - lamp & end tables - coffee table & round table w/simulated inlaid marble - pictures & frames - picnic table w/benches - wooden metal framed glider - two patio chairs w/foot stools - wooden metal frame park bench - cooler on wheels - cement lawn figurines - lots of fall & Christmas decorations - various amount of cookbooks - kitchen utensils - small electrical appliances - pots & pans - odd & end dishes - silverware including two odd sets of sterling silverware - lots of silver plated items such as large trays, punch bowls, etc. - bedding & linens - soft & hardback books - small iron patio table w/two chairs

**ANTIQUES & COLLECTIBLES:** Walnut full size bed w/fancy carving complete w/matching marble top dresser & mirror w/hand carved fruit pulls - walnut three shelf bookcase w/sliding glass doors - walnut drop front desk - library table w/carved edges & legs - round oak dining table w/four matching roller chairs - walnut finished round table w/four leather roller chairs - small three drawer marble top chest - two Lane cedar chests w/trays - wooden ease - wooden oval mirror on stand - wooden high chair w/pressed back - marble top lamp table - wooden quilt rack - round cherry night stand - wooden bassinet & baby bed - oak hall tree w/lift seat, mirror & hooks - four piece iron patio lawn set - four piece white wicker patio set - two 'Gone With the Wind' hand painted electric lamps - candelabra w/glass prisms - oil painting on canvas - Waltham gold enclosed pocket watch - Seth Thomas mantle clock - International Library set of piano music - several other old pieces of piano music - handmade quilts - Longaberger and other baskets - lots of costume jewelry - collector plates - paper weights - two brass school bells - several pieces of Ayers pottery in brown, blue, & gray - Rogers Brothers silverware - service for twelve Nontake China dishes - service for twelve Ruby Red trim thumb print dishes - Moon & Stars compote - pink depression - hand painted blue towers water set - hand painted plates - several pieces of Bridge Card design dishes - "Precious Moments" - milk glass, etc.

**CAR & RIDING LAWMOWER TO SELL IMMEDIATELY FOLLOWING REAL ESTATE:** 2006 Cadillac STS, four door blue car w/leather interior, sunroof, & 82,xxx miles - AgoGo Allis 409G 38" cut riding lawn mower. **AUCTIONEERS NOTE:** Please plan to attend this very large auction including a beautiful home and personal contents belonging to Phyllis J. Belt & the late Ronald M. Belt who are well-known lifetime Macon County residents.. D.C. - Cash/Check w/D - lunch & porta potty on grounds.

**OWNER:**  
**PHYLLIS J. BELT**  
 FOR MORE INFORMATION OR A SHOWING,  
 CONTACT JULIA BARRY @ 660-651-4652  
 OR DREW BELT @ 660-651-9812

**Christy's Auction Service**  
 La Plata, MO 63549 660-341-4531  
 See Website for Photos: www.christysauctions.com  
 & Christy's Auction Service on Facebook & AuctionZip.com  
 Auctioneers - David Christy 660-341-4531  
 Jason Wood - 660-341-7884 Greg Smoot - 660-341-5175



## Kirksville Real Estate & Personal Property Auction

**Tuesday, October 18, 2022 at 4:00 p.m. Estate Auction**

**Directions:** 721 East Illinois Street, Kirksville, Missouri. From North Baltimore Street, turn West on East Illinois Street. The property will be on your right. Look for signs the day of the auction.

We will be auctioning this three bedroom, one bath bungalow style home with stucco and rock exterior. The home does have a large living room, dining room and kitchen. It has hardwood floors and a full basement. The home does need work. There is an oversized one car garage and a large yard.


**The real estate will be sold promptly at 5:00 p.m.** Please call Scotty to schedule your personal showing at 573-356-4405.

**DOWN PAYMENT:** 10% of the contract purchase price will be due upon acceptance of the Sales Contract. Personal or Cashier's Checks will be accepted. This is "AS IS, WHERE IS" and is non-refundable. **CLOSING:** Closing shall be within 30 days of the auction date

**VEHICLES:** Chevy Silverado pickup truck and Harley Davidson motorcycle

**HOUSEHOLD FURNISHINGS:** China cabinet; queen size bed frame; hutch; entertainment center; VHS tapes; DVD's; BBQ grill; wooden storage lockers; bolt bins; Coors beer light; Stroh beer light; Bud Light neon light; pine cabinet; hanging lights; misc furniture

There will be many more items too numerous to mention.  
**SEE MORE PHOTOS ON SCOTTY'S WEBSITE**



**SCOTTY'S AUCTION SERVICE**

573-356-4405

Michael Cunningham 660-651-2288 • Paxton Pittman 660-346-1956  
**WWW.SCOTTYSAUCTIONSERVICE.COM**

Let us help you with all your advertising needs. Don't know what to say? Call us we can help! 660-665-8500.

Have items to sell? Have too much stuff? Let us help you get the most for it! Call 660-665-8500.

## Farm Equipment Auction

**Saturday, October 8, 2022 at 10:00 a.m. The Estate of Raymond Gallop (Trot)**


**Directions:** 12618 US Highway 24, Madison, Missouri. Follow US Highway 24 approximately 2 miles West of Madison to the auction location. Look for signs the day of the sale.

**Machinery:** Ford 4000, needs work; Ford 6000, needs work; King Kutter 3 point, 6 foot blade; Ford 4000 HD forklift, all terrain double stage, needs work; Ford 642 combine; Ford 6' 3 point brush cutter; 3 point bale carrier; 3 point bale spike; pickup bed trailer; Ford 5000 with front end loader, needs work; 4 x 8 two wheel trailer; 2 reversible scoop; Ford 5000 tractor, tandem axle; 2002 7' x 14' trailer; Ford 642 combine; Ford 642 combine; Ford 552 baler; Ford 6000 diesel with 2 row corn picker; Ford 537 disc bine; Ford 9600 cob tractor; Ford TW-30 tractor; Ford 642 combine; Ford 9000 tractor; Ford 4 tow corn head (2); Ford mount 2 row corn picker; Ford 6 row corn head; Ford Commander 6000 parts tractor; Ford propane tractor; Ford parts tractor; 2 Ford 6000 parts tractors; Ford LGT lawn tractor; Oliver cab; 2 Ford 8000 parts tractors; Ford 9600 parts tractor; several Ford 3 point sickle mowers; Ford bean head; yard sweep; Ford wheel weights and bolt on front; Ford CM224 4 wheel drive automatic; large variety of Ford manuals; Ford parts; Ford square baler; Ford 537 disc bine; Ford disc; 3 point blade; Ford 4 bottom plow; Ford 5 bottom plow; Krause 18' disc; Massey Ferguson 4 bottom plow; Ford 4 row planter; Ford 532 square baler; Ford 642 combine; Ford 3 point blade; Ford cabover truck.

**Tools and Equipment:** Lincoln arc welder, needs work; 2 Craftsman 2 tier tool chests; Rigid drill press; work benches; 184 Milwaukee drill; Delta bench grinder; Snap-on impact with charger; various hand tools; sockets; wrenches; hydraulic shop press; Forman battery charger; Sears HD battery charger; metal shop table; Reed vise; shop shelving; 500 gallon gas barrel; variety of electric motors; Ford space heater; 2 roll-around shop lift trucks; GVC 220 volt power washer

**Household Items:** commercial Hobart dishwasher, unknown condition; ice cooler; Ford pedal tractor; Bunn coffee makers; Driair commercial dehumidifier; stainless steel Hobart dishwasher parts.

SEE MORE PHOTOS ON SCOTTY'S WEBSITE



**SCOTTY'S AUCTION SERVICE**

573-356-4405

Michael Cunningham 660-651-2288 • Paxton Pittman 660-346-1956  
**WWW.SCOTTYSAUCTIONSERVICE.COM**

**There's a better way to get noticed.**

Keep life simple. Take out an ad.



## MACHINERY & EQUIPMENT AUCTION

**SATURDAY OCTOBER 8, 2022 9 AM**

1916 S. 18TH ST. (HWY 5 S.) CENTERVILLE, IOWA

**Estate of Thomas Paul Gesualdo: (Items sell in as-is condition):** Nice 2001 Harley Davidson Motorcycle, Model FXDL; 743 Bobcat Skid loader; 1 Mfg. 6' X 12' White Enclosed Trailer; Small Red Flat Trailer; Case 480C Back Hoe, D, W/ Scoop, Set of Teeth; 03 Ford F150 XL Pickup; 01 Ford 250 Super Duty, Ext Cab Pickup; Meyer Pickup Snow Plow; 1985 Ford F7000 Dump Truck; Garage Kit; Ford Tractor; 3 Pt items=Disc, 2 Bot. Plow, Blade, Ford Sickle Mower; 16' Alum Semi V Bottom Boat w/ Trailer; Canoe; Quick Attach Skid Loader Forks; Tools; Firearms=Boito .410 and Remington Sportsman 12 GA.; YOU MUST HAVE IOWA PERMIT TO PURCHASE, IOWA CONCEALED WEAPON PERMIT OR FFL AND SUPPLY A VALID IOWA D.L. TO PURCHASE, NO EXCEPTIONS.

**Jim Crow, Machinery Dispersal. All This Equipment used up to the date brought in for Auction:** 2 = A/C 7020 D Tractors w/ Cabs, WF, 3 Pt, (One is Power Shift, One is Select Dial); 2 Sets of Chains to fit these Tractors; 4020 JD D Tractor; 535 JD Baler+ Twine; 702 JD Wheel Rake; 258 NH 9' Side Delivery Rake; 6 Bale Bumper Hitch Trailer; 283 S 9' Krone Disc Mower; 8' 3 Pt Blade; 30 Ton North Star Wood Splitter; Metal Gates; Cattle Panels; Bale Rings; D Barrel for Pick Up; 2 3Pt Bale Stabbers; Log Chains; Elec Fence Chargers; + More;

**Early Listings:** 966 International D Tractor w/ Heavy Duty Loader, Good Rubber, Cab, Runs Good; 1958 8 N Ford Tractor w/ Loader (2nd Owner); Brush Hog; Blade; 3 = 8 N Ford Tractors; 3000 Ford Tractor, G, PS; MF 135 Utility Tractor, G, Wf, (3 Pt as-is); Farmall Cub Tractor, Mower, Blade, Plow; JD 4020 D Tractor; 8 N Tractor, good paint; JD RESTORERS, DONT MISS THESE TRACTORS= 1948 JD B; 1953 JD 50 W/ 800 SERIES 3 PT HITCH, 1944 OR 45 JD MODEL A, AND A 1958 JD 720 D TRACTOR; JD 2 Row Cultivator for a B; JD 814 2 B Plow; Barge Wagon; 100 Bu Gravity Flow; Case IH 8312 Disc Mower; 2 Wilmar Fertilizer Carts; 2 Liquid Transfer Tanks on Trailers; Case IH 28 Nitrogen Applicator; Imp. Tires/Wheels; JD Rear Scoop Bucket; Large amount of 3 Pt Equipment; JD 7000 4 R. Corn/Bean Planter; JD 1000 Field Cultivator w/ Harrow; 12' Bush Hog Disc Mower; 2 Rake's; 92' X 12' Feterl Grain Auger, Swing away Hopper, Scissor Lift; 10' X 71' Westfield Auger; Harley Davidson Motorcycle Parts; Blair 6 X 16 Gooseneck Livestock Trailer; Herd Model 1200 C 3 Pt Seeder; Silage Wagon; 12' M. Moline Grain Drill; JD 3 B. Plow; Ford 2 B. Plow; Danuser F8 4' Post Hole Digger w/ 12" Bit; Heavy Duty 8' Blade; Chicken House on Skids w/ Large Pen; Cattle Head Chute; Gates; Panels; Creep Feeder; Finish Mower; 3 Pt Kewanee Blade; Rubbermaid Tanks; 1990 Ford F150 Pick Up; Lawn Mowers; Rear Tine Tillers; Tow Spreader; LP House Generator; Cub Cadet LTX1040 Lawn Mower; Brush Cutter; 7' Rhino Blade; Dearborn 3 pt 7' Cultivator; JD 3 pt 2 Row Planter; Pr 4020 Series Fenders; 2 Bumper Hitch Livestock Trailer; Posts; Fencing; Large Square Posts; 81 C70 Chev Grain Truck, Hoist, tandem axle, 16' Box; 9' 3 Pt Blade; Coates Tire Machine; 2 Power Washers; 32' Snow Blower-new engine; LARGE AMOUNT OF CONTRACTOR/ CONCRETE TOOLS TO INCLUDE=Elec & Propane Heaters; Patio Heaters; Scaffolding /Accessories; Signs, Lighted business sign to be redone; Concrete Tools; Hand Tools; Ladder Jacks; Construction Supplies/Materials; Electrical and Plumbing Tools/Supplies; Lights; Pipe Machine; Seeder/Fertilizer; Earth Saw; Drop Seeder; Plugger; Lawn Combers; 2 in Water Pipe; Chop Saw; Fencing; Paint Sprayers; Whacker Compactor; Radio/CDS; Roof Paper; Flashing; Floor sanders; Vacuums; Wedding Rental; Snow Cone Machine; Rubber/Concrete Boots; Saddle; Lots of Misc; SPEND THE DAY WITH US, AD WRITTEN 2 WEEKS EARLY. EQUIPMENT COMING IN DAILY.

**PICTURES ON WEBSITE:**  
demryauction.com OR Facebook

## DEMRY AUCTION, LLC

1916 S 18th St, (Hwy 5 SOUTH) CENTERVILLE, IOWA

Tom Demry: 641-895-2508  
Janet Demry: 641-895-4310 641-856-6408  
Kristy Demry: 641-895-2509  
Junior Lawson: 641-895-0037 Randy Mulay: 641-436-1521

# PUBLIC AUCTION

**OWNERS: CARROLL AND CLAYTON THOMAS**

**SUNDAY OCTOBER 9, 2022 11:00 A.M.**

**LOCATION: 19545 Homestead Drive Green Castle, MO 63544**

**HOUSEHOLD & COLLECTIBLES:** Kenmore chest type freezer 15cu, GE chest type freezer 15 cu, Kenmore 600 washer, Tromm 220 dryer, 2 flat screen televisions, Magic Chef microwave, 2 apartment size refrigerators, Cabela's electric meat slicer model 1AF-FS416, pressure cooker, small wooden kitchen table w/4 chairs, wooden heavy duty kitchen table w/6 chairs, book shelves, wooden foot stool, sofa, chairs, glider rocker, queen size bed, full size bed w/matching dresser and night stand, night stands, several chairs, old wooden wardrobe, chest of drawers, old wash basin w/mirror, carpet shampooer, 2 wooden writing desks, large assortment of handmade quilts, quilt rack, old wooden box w/lid, coffee table with lift up top, end tables, several antique sets of dish sets, cooking utensils, pots & pans, several unique cookie jars, 500+ salt & pepper shakers, glass jars, 8 track stereo w/recording player, 4 kerosene lamps, old wooden clocks, old wooden radio, 8 day alarm Seth Thomas wooden automatic clock, old dinner bell.

**TOOLS:** Craftsman 1.9 hp 27-gallon air compressor, brand new generator 4,000watt start 3500 continuous, Sears Craftsman 12" 2-speed band saw 1 1/8 hp, 3 Craftsman stack on tool boxes, Craftsman 10" table saw 2 3/4 hp, Craftsman 10" belt driven table saw 3 hp, Craftsman 15" drill press, Grizzly wood lathe, routers, sanders, S & K socket sets, electric drills, Craftsman socket sets, several wrench sets, screwdriver sets, power washer, battery charger, 2 wagon jacks, 2 come a longs, lots of wood working tools.

**LAWN MOWERS:** Cub Cadet 25hp 60" cut 7,000 series zero turn, Poulan 450 4 1/2 hp push mower.

**MISCELLANEOUS:** 10 hedge line posts, lots of bird, rabbit, duck & chicken cages, 4- 10' feed bunks, 10- 300-gallon Rubber Maid tanks, several old steel wheels, 14' pipe gate, aluminum tread plate toolbox, wheel barrel, 2- 250-gallon water totes, several old cream cans, motor stand, 2 dog kennels, 2- 25-gallon ATV sprayers, new & used steel posts, cattle panels.

**GUNS:** Remington 742 Woodsmaster 30-06, Remington 12 gauge 2 3/4 or 3" single shot, Browning 22 automatic suitcase gun, Mossberg model 835 ultra mag 2 3/4-3 1/2 pump, lots of hunting/pocket knives, turkey calls, 30-30 ammo, buck shot, 22 short ammo.

**MACHINERY:** John Deere 6420 front wheel assist w/640 JD loader 6,290 hrs. good tires w/bucket & stabber 540 or 1,000 pto, John Deere 5300 2wd w/loader-good tires 3,937hrs, 8N Ford tractor, Vermeer TM800 Rebel Trailed mower 9', Vermeer VR1022 10 wheel rake, Vermeer 665 Rancher baler w/string or net monitor approx. 4,000 bales, John Deere running gear, 10' pull type bush hog-new blades model 3126, 3 pt bale stabber, 6' 3pt disc-like new, 3 pt log splitter w/stand, 3 pt seeder, hay tedder, 6 John Deere suitcase tractor weights.

**TRAILER:** Dakota 6x16 bumper hitch horse trailer

**STATEMENT DAY OF SALE TAKES PROCEDURES OVER WRITTEN AD**

**AUCTIONEERS NOTE:** This is just a partial listing, and we will have much more on sale day! Carroll and Clayton have sold their farm and they are selling an exceptional line of machinery. Well maintained & serviced regularly.

**Jeffries Auction Service**  
Danny Jeffries • 660-342-1075

**There's a better way to get noticed.**

Keep life simple. Take out an ad.



# SMITH FARM AUCTION

1182 MONROE ROAD - MADISON, MO

**FRIDAY, OCTOBER 7, 2022 | 12 NOON**




**TRACTORS - COMBINE - SILAGE CUTTERS - TRENCHERS - MOWER - TEDDER - HAY TRAILER - TILLAGE - EQUIPMENT - TRUCKS - ATV'S - WOOD SPLITTER - FEED & GRAVITY WAGONS - BULK FEEDER SHED - LIVESTOCK SCALES - PORTABLE WELDER - TORCH - ARC WELDERS - TOOLS - FARM RELATED - TIN - FULL LISTING @ IMANAUCTION.COM**









**MIKE SMITH, SELLER \* MADDY BEST, P.R.**

**IMAN AUCTION COMPANY | 660-388-6235 | ImanAuction.com**

# JONES MOVING AUCTION

19947 ROUTE A - HOLIDAY, MO

**THURSDAY, OCTOBER 6, 2022 | 12 NOON**



Tommy & Maxine have sold their beautiful home and will sell over 65 years of accumulation. Nice Antiques, Guns, Tools & More. Come spend the afternoon. Good Parking




**TRAILER - BOAT - LAWN MOWER - LAWN CARE ITEMS - AIR COMPRESSOR - TOOLS - GUNS & FISHING - SADDLES - J.L. CLUSKEY CROCKS - ANTIQUES - PRIMITIVES - HOUSEHOLD - FULL LISTING @ IMANAUCTION.COM**

**TOMMY & MAXINE JONES, SELLERS**

**IMAN AUCTION COMPANY | 660-388-6235 | ImanAuction.com**

# High Consignment Auction

Although Kris has left, due to many requests, our family has made the decision to hold another consignment auction this fall.

Same location @ Downing, Mo. on Hwy 136 West, 1 mile to auction site.

**Friday, October 28, 2022 @ 9:00 a.m.**

No additional hay racks items. Advertising deadline October 1.

**CONSIGN NOW!**

to consign items contact 660.216.0515



# FARM MACHINERY CONSIGNMENT AUCTION

Saturday, October 15  
@10 AM

## SCHACHTELE BARN - KEYTESVILLE, MO

From Hwy 24 at Keytesville, take Hwy 5 North approx. 4 miles to site with a brown barn/green roof on the West side of the road, or from Hwy 36 at Marceline exit take Hwy 5 South, approx. 16 miles to site.

**TRACTORS, SKID LOADER & BACKHOE:** JD2555 Diesel w/Westendorf Loader, KubotaB52004WD w/Kubota16400 Loader; AllisChalmers6140 w/Loader, JD2510 Gas; New Holland7740 w/Cab; JD2510 Gas; New Holland7740 w/Cab; JD720 propane; Gehl4500 Skid loader-not running; JD2840 Cab & Westendorf Loader; JD420 Narrow Front 5Speed All Original; Case580C Backhoe; 2012 JD3320 W/MowerDeck

**SKID LOADER & EXCAVATOR ATTACHMENTS:** 7' Blade; American Industries New 6' Box Blade; 5' Brush Cutter for Excavator; Stout 78" Flat Bottom Bucket; Stout 72" Grapple Bucket; 2 14-17.5 Skid Loader tires; EZ-Puller Tree Puller; New Pallet forks; JCT Post Auger; JCT Brush Cutter; AgroTK Concrete Breaker; Blank Weld on Plates; Fork Extensions; New Trencher;

**TRAILERS, 4WHEELERS, UTV, & LAWNMOWERS:** Honda Four Trax 300 4wheeler, 1 owner, runs good; JD330 Diesel Lawnmower, 1 owner, runs good; 5x8 Utility Trailer; older 16' Bumper Hitch Stock Trailer; 16' Equipment trailer w/ramps & 2-7000 lb axles; 26' Coose Livestock Trailer; 20' Equipment Trailer w/stand-up ramps, 2-7000lb axles & steel floor; Suzuki 4wheeler 125CC; Arctic Cat 550 Prowler;

**FARM MACHINERY & EQUIPMENT:** JDMX10 Brush hog, New Holland329 Manure Spreader; 3pt 12' Chain Harrow; 3pt 5' Box Blade; 3pt 7' Bush Hog5Q184; JD 709 Mower; JD7000 4-Row Corn Planter w/30" Rows; Metal Flare Box Wagon; VermeerWR20 8-Wheel Hay Rake; IH5100 Drill w/Grass Seed; Gravity Wagon w/Hydraulic Auger; 10' Cultipacker; New Holland269 Square String Tied Baler; JD24T Square Baler; New Holland355 Grinder Mixer; Kewanee 22' Disc; Rhino950 9' Hydraulic Blade; Land PrideRCR2510 Mower; Land Pride55-120 10' Hydraulic Blade; Pto Water Pump; IH430 Square Baler; JD 2Row Corn Planter; KingKutter 3pt 5' Mower; Like New 3pt 6' Tarter Blade; 3pt Grass Seeder; 3pt 6' Box Blade; 3pt Boom; Bale Spike off JD Loader; Several 3pt Bale Spikes; 3pt Quick Hitch; IH 100 Manure Spreader-needs Floor; 3pt 4' Chisel Plow; JD 5Bar Rake; 3pt 3' Disc; Blackhawk 4' Blade; Ford Sickle Mower; Brillion 3pt 5' Seeder; Ground Driven Manure Spreader; M&W 72" Finishing Mower; 3pt 8' Swivel Heavy Blade; 10' pull type Chisel Plow; 3pt Cary-all; 3pt Ford 6' mower; Ford 3PT 3Bottom Plow; Danuser Post Hole Digger w/10" Auger; 18" Auger; JD 3pt 12' Chisel; Fenco 3pt Sprayer w/50 Gall Tank & 10'boom; Ford 6' Blade; 5' Finishing Mower; Land Pride pull type Caddy; 3pt Log Splitter; pull type 8' Disc; PTO Generator; 2Bottom 3pt Plow; 3pt Bale Unroller; New Idea pull type Manure Spreader; Diamond K Manufacturing pull type 8' Box Blade; JD1450 5Bottom Plow; Brillion 10' pull type Seeder; New Holland 3pt 451 Sickle Mower; Southeast 3pt 8' Swivel Blade; 12' 3pt Cultivator; KuhnGA300 Hay Rake; JD1219 Mower Conditioner; Dual Loader w/brackets; JD896 Rake; Glencoe 14' Field Cultivator; IH 12' 3pt Rotary Hoe; IH540 Manure Spreader w/Slope Gate; 4Bale Homemade Bale Trailer; Barge Box Wagon w/Hoist; JD14T Baler-Really Nice; New Holland57 3pt Hay Rake ; 10' 3pt Bush Hog Mower; JD 14' Manual Fold Disc; Westendorf TA-46 Loader;

**LIVESTOCK & FENCING EQUIPMENT:** Several 24' Freestanding Panels; 2-14' Overhead Freestanding Gates; 2 12' Overhead Freestanding Gates; 2Ton, 4Ton, 6Ton, Bulk bins; New 2ton Portable Bulk Bin; New metal 8' Feed Troughs; 50 Cattle Panels; 10 New 10' Corral Panels; Several Used Steel Post; 10 Metal Fence Post Braces; Poly 1000lb Creep Feeder; Several used Gates @ Various Lengths; 10 Sheep & Goat Portable Corral Panels; 12 Freestanding 16' Sheep & Goat Corral Panels; 6' Cement Cattle Crossing Guard; New Squeeze Chute; Priefert Head Catch; 56 6x8 Treated Post; Metal Horse Feeder; Metal Sheep & Goat Hay Feeder; Small Metal Creep Feeders; 4' & 6' Tall 2x4 Wire;

**FARM RELATED MISCELLANEOUS ITEMS:** 7'x8' New Storage Metal Container; ATV Grass Seeder; 2 new 200 lb Anvils; Several different Sized Iron Wheels; Small Lawn cart; New Chain Slings; Roll 1/4" Cable; Electric Fencers; 2 7' Decorative Driveway Gates; 200 Gall. Stainless Steel Pot; 425 Gal Plastic Water Tank; 2 New Stainless 7' Tool Box w/Workbench; New 7' Stainless Tool Cabinet; New 9' Stainless Base Tool Cabinet w/Workbench & Top Tool Box; Red 7' Base Tool Cabinet w/Workbench & Top Tool Box; New 7' Red Cabinet Tool Box w/Workbench; Several Different sized Used Tires & Wheels; Stand-up Fuel Tank; Big Roll Rope; Concrete Mixer; Rolair Portable Air Compressor w/Honda Motor; Several 50 Gall. Metal Barrels; New 18 Gall. Rubber Water Tanks; Timberline Woodstove; Several Pieces of Conduit; Several Boxes of Electrical Fittings; 4 New Gas Water Pumps; Several kinds of Hand Tools

**Taking Consignments Daily-Expecting Much More by Sale Day**  
Check Schachtele Auction Facebook Page for Pictures and Other Consignments. Selling Farm Machinery, Farm Tools & Equipment & Many More Miscellaneous Items (No Household Items)

**To Consign Early for Advertising or for More Information Call Tony: (660) 413-3250**  
We Appreciate All Consignments!

Terms Cash-Good Check with Proper ID. We are NOT Responsible for Accidents to Man, Woman, Child or Animal!  
We are NOT Responsible for Lost, Stolen or Damaged Articles or Property!

Call us for all your advertising needs. 660-665-8500.

Call about our classified ad specials. 660-665-8500.

# Matthes Land Auction Online-Only | Oct. 7th - 12th

370 Acres +/- Selling in 3-Tracts - Northeast of Triplett

**Tract #1: 120 acres +/-:** Approximately 96 acres tillable (80%). Predominantly Grundy & Lagonda soils w/ very gently rolling topography. Good access from Hwy 11 on the West and Bachtel Rd on the North. This property has strong cropland potential, building sites, & excellent hunting.

**Tract #2: 110 Acres +/-:** Approximately 81 acres tillable (74%). Predominantly Grundy and Lagonda soils w/ very gently rolling topography. Bordered by Hwy 11 on the West, with good access from West Wind Rd & Sioux Ave. This property has very strong cropland potential as well as excellent hunting. Its heavily wooded Northwest corner has not been logged in many years and likely has marketable timber.

**Tract #3: 80 Acres +/-:** Approximately 60 acres tillable (75%). Predominantly Grundy and Lagonda soils with very gently rolling to rolling topography. This tract also has good access from West Wind Rd on the South, and Sioux Ave on the West. This property has strong cropland potential as well as excellent hunting.

Visit [EnyeartAuctionRealty.com](http://EnyeartAuctionRealty.com) to Register & View Full Details. Call 660-288-3022 For More Info.

**John & Donna Matthes, Sellers**  
**ENYEART**  
Auction & Realty LLC  
Daniel: 660-288-3022 \* Clayton: 660-651-3396 \* Loren: 660-651-9889

## ONLINE AUCTION

# ADAMS COUNTY, ILLINOIS ESTATE AUCTION

THURSDAY, OCTOBER 20, 2022 AT 10:00 AM CDT

2631 E 1100TH ST. MENDON, IL

100 COLLECTOR TRACTORS

OPEN HOUSE: SATURDAY, OCTOBER 8 • 9:00 AM - 12:00 PM

The Gooding real estate is located approximately 5 miles north of Mendon, IL or 6 miles west of Loraine, IL or 7 miles northeast of Ursa, IL (15 miles north of Quincy - Section 22, T2N-R8W, Mendon Township, Adams County, IL). The real estate contains 24.23 acres, and is improved with a modern ranch style 3-bedroom brick home and farm outbuildings. Also selling 100 IHC, Farmall, & McCormick collector tractors, trucks & trailers, construction equipment, & tools.

**LYLE GOODING ESTATE**  
Representing Attorney: Andrew Staff  
237 N 6th St, Ste 200, Quincy, IL 217-228-8470  
Auction Manager: John Sullivan,  
Dan Sullivan, & Cody Holst

**SULLIVAN AUCTIONEERS, LLC** (844) 847-2161  
[www.SullivanAuctioneers.com](http://www.SullivanAuctioneers.com)  
License #44400010/ 665507cb

**JOHNSTON AUCTION & REAL ESTATE**  
Missouri State Treasurer  
Scott Fitzpatrick  
**UNCLAIMED PROPERTY AUCTION**  
"2 DAYS"  
Monday, October 3rd  
Tuesday, October 4th

Auction begins @ 9:00 a.m. Each Day  
Hilton Garden Inn Conference Center  
3200 Vandiver Drive, Columbia, MO 65202  
VIEW FULL CATALOG ON-LINE  
<https://treasurer.mo.gov/auction>

About 2,600 total lot units, including lots of jewelry and coins.  
Many valuable and collectible items: books, stamps, bracelets, brooches, necklaces, pendants, rings, watches, foreign coins & Tokens, foreign currency, commemorative coins, proof & mint sets; pennies, nickels, dimes, quarters, half dollars, silver dollars & silver coins, gold coins.

PRINTED CATALOGS WILL BE AVAILABLE ON-SITE (While supply lasts)  
Items will be sold in the order of the catalog. See the Catalog for Terms and Rules. Unclaimed Property 573-522-2299

Preview  
Sunday, October 2, from 5 p.m. to 8 p.m.  
October 3 & 4 from 8:00 - 9:00 am

TERMS: CASH OR CASHIER'S CHECK  
PERSONAL OR BUSINESS CHECKS  
ACCEPTED ONLY WITH BANK LETTER OF CREDIT (no exceptions).  
CREDIT CARDS ACCEPTED, FEE CHARGED  
SALES TAX COLLECTED  
PHOTO ID REQUIRED!!

**JOHNSTON AUCTION & REAL ESTATE**  
Col. James L. Johnston, Sr.  
3200 Vandiver Drive, Columbia, MO  
Office: 660-291-9271 • Cell: 573-473-4904

# Star G Ranch & Friends Red Angus Auction

Selling **250** Red Angus Females

Saturday October 8, 2022  
Lunch at 11:00 Auction at 12:00 high noon  
at the Gilchrist / Star G Ranch Auction Barn  
12144 Dove Ave., Douds, Iowa

Fall Cow/Calf Pairs Bred Females  
Fancy Open Heifers Bulls Embryos  
& 150 Commercial Bred Heifers

**Star G Ranch, Inc.**  
Kyle Gilchrist 641/919-1077  
Lisa Gilchrist 515/669-9945  
View the catalog online at: [www.redcows.net](http://www.redcows.net)

**DVAuction**  
Broadcasting Real Time Auctions

# SULLIVAN AUCTIONEERS, LLC

A FAMILY OWNED BUSINESS SINCE 1979

MATT MICHAEL LUKE JOHN

DAN JOE JIM BILL

Headquartered in Hamilton, Illinois, Sullivan Auctioneers, LLC is one of the largest Real Estate and Farm Machinery Auctioneers in the nation.  
For more than 40 years we have been conducting professional auctions. We connect our sellers with thousands of interested buyers around the world.

**Considering an Auction?**  
CALL OR EMAIL TODAY FOR A NO OBLIGATION CONSULTATION!  
Toll Free (844) 847-2161 | [Sold@SullivanAuctioneers.com](mailto:Sold@SullivanAuctioneers.com)  
[www.SullivanAuctioneers.com](http://www.SullivanAuctioneers.com) | Lic. #444000107

# Online LaPlata Santa Fe Collectibles & Personal Property

Starting NOW  
Auction Ends Tuesday, October 11, 2022  
28251 US Highway 63 North, Macon, MO 63552

Internet - only auction ending Tuesday, October 11, 2022.  
We will be selling by online auction these Santa Fe Railroad collectibles and nice, quality household items.

SEE MORE PHOTOS ON SCOTTY'S WEBSITE

**SCOTTY'S AUCTION SERVICE**

573-356-4405  
Michael Cunningham 660-651-2288 • Paxton Pittman 660-346-1956  
[WWW.SCOTTSAUCTIONSERVICE.COM](http://WWW.SCOTTSAUCTIONSERVICE.COM)

Let us help you with all your advertising needs. Don't know what to say? Call us we can help! 660-665-8500.

HAVE A PET OR PUPPIES TO SELL? Call us. You can even pay over the phone. 660-665-8500.

FIND THE  
**PERFECT PET**  
FOR THE  
**PERFECT PRICE**  
IN THE  
**PERFECT PLACE**  
FOR DEALS

Find the stuff you want and sell the stuff you don't in the newspaper classifieds.



# NEMO

Trader

**FREE**

NEW EDITION EVERY FRIDAY!  
VOL. 29 • NO. 52 • JANUARY 28, 2022

# NEMO

Trader

## THE NEMO TRADER

PO BOX 809 • KIRKSVILLE, MO 63501 • PHONE 660-665-8500  
Web Site: [nemotrader.net](http://nemotrader.net) • Email: [sales@nemotrader.net](mailto:sales@nemotrader.net)

A WEEKLY ADVERTISER SERVING ALL OF NORTHEAST MISSOURI AND THE SURROUNDING AREA



**ED'S MACHINERY LLC**  
QUALITY MACHINERY SINCE 1997

Have equipment to sell? Consign today!  
**Absolute Auction, No Reserve.**  
Consignments accepted until Wednesday, March 9th, at 5:00 P.M.  
Print advertising deadline: February 11th, 2022

**EXCHANGE YOUR EQUIPMENT FOR CASH!**

660-883-5501

[WWW.EDSMACHINERY.COM](http://WWW.EDSMACHINERY.COM)

**CONSIGNMENT AUCTION**  
Live on site & Online  
March 11<sup>th</sup>, 2022 @ 9:00 AM

17920 US Hwy 136 • Memphis, MO  
- 1 Mile West of Memphis on Hwy 136 -

*The Meeting Place For Buyers And Sellers!*

*Call Cindy!*

**660-988-6830**

chigh@nemotrader.net  
701 East Laharp Ste. C • Kirksville, Mo 63501

**NEMO** Trader    **KIRKSVILLE Daily Express**    **The Kirksville CRIER**

**WE CAN ALSO PRINT YOUR INSERTS!**

CALL OR EMAIL FOR YOUR CUSTOM QUOTE!

**Insert Rates (11,000 pcs):**

8.5" x 11" single sheet	\$385
4-12 page tabloid	\$572

**We are a free publication serving a 20 county coverage area in Missouri, Iowa, and Illinois.**

We distribute 11,000 copies each week to convenience stores, restaurants, and other businesses for readers to pick up.

**NEW ISSUE EACH FRIDAY, ALSO AVAILABLE ONLINE AT NEMOTRADER.NET.**





**McAfee Auction Service, LLC**

375 S Johnson • Kahoka, MO

660-727-3796

www.mcafeeauctionservice.com

**ABSOLUTE RESIDENTIAL REAL ESTATE AND PERSONAL PROPERTY AUCTION**

**SATURDAY OCTOBER 15<sup>TH</sup> - 10 AM**

Sale conducted onsite located at 1093 N Cleveland, Kahoka, MO



Selling a 1620sq', 3 bedroom, 2 bath manufactured home built in 1993, 24'x36' detached garage all setting on a 145'x 140' tract of land

**OPEN HOUSE: Sunday, October 2<sup>nd</sup> 1-2 PM**

Also Selling Personal Property to include: Household misc, collectibles, lawn mower etc.

**COMPLETE DETAILS ONLINE!**

**JILL SHINN, SELLER**

CAROL LAPSLEY, POA



**McAfee Auction Service, LLC**

375 S Johnson • Kahoka, MO

660-727-3796

www.mcafeeauctionservice.com

**ONLINE ONLY COIN AUCTION**

LOTS START ENDING

**SUNDAY, OCTOBER 16<sup>TH</sup> - 1PM**



Sale offers Gold \$2 1/2, \$10 and \$20 coins, nice selection of Silver Eagles, Morgan and Peace Dollars, Silver Rounds, Currency, Proof and Mint Sets and more.

**SOMETHING FOR ALL COLLECTORS**

**GENE WHEATLY, SELLER**



**McAfee Auction Service, LLC**

375 S Johnson • Kahoka, MO

660-727-3796

www.mcafeeauctionservice.com

**TIMED ONLINE ONLY AUCTION**

LOT ENDS

**THURS, NOVEMBER 3<sup>RD</sup> - 10 AM**



Selling a 1956 Cessna 172 straight tail, 4 passenger airplane

Current annual, only 115.2 hours on major overhaul, only 2261 hours of total time, up to date and complete logs since 1956

Located at the Memphis, MO airport 15990 US Hwy. 136

Can be previewed by appointment only.

For Information: 660-956-2745

**STEVE AND ANGIE CHANCE, SELLER**



**McAfee Auction Service, LLC**

375 S Johnson • Kahoka, MO

660-727-3796

www.mcafeeauctionservice.com

*Clark County, MO*

**LAND AUCTION**

Sale conducted at the Care Building 451 N. Vine Street, Kahoka

**47.5 ACRES/2 TRACTS**

Lying in Sect. 28, Twp 66N, R7W Clark County, MO

**Thursday, October 20<sup>TH</sup> at 6 PM**

Productive Tillable Land



3 Bedroom Home

**OPEN HOUSE: SATURDAY OCTOBER 8<sup>TH</sup> 10-11 AM**

**STEVEN & TENA SMITH, SELLERS**



**McAfee Auction Service, LLC**

375 S Johnson • Kahoka, MO

660-727-3796

www.mcafeeauctionservice.com

*Marion County, MO*  
**LAND AUCTION**

Sale conducted at the Sesquicentennial Building located at 621 Johnston Ave, Palmyra, MO

**123 ACRES/3 TRACTS**

Lying on the West edge of Palmyra, MO in Sect. 22 and 23, Twp. 58N, R6W Marion County, MO

- Tillable Cropland
- Pasture/Woods
- Building Sites
- Hunting



**Thursday, November 17<sup>TH</sup> at 6 PM**

**REGINALD PFLANTZ IRR. TRUST**

ROXIE BUNK, TRUSTEE/ MARK T WAIN TITLE CO., CLOSING AGENT



**McAfee Auction Service, LLC**

375 S Johnson • Kahoka, MO

660-727-3796

www.mcafeeauctionservice.com

**5 ACRES Knox County, MO RESIDENTIAL REAL ESTATE AUCTION**

Sale conducted onsite located at 51835 Hwy. 156, Novelty, MO Selling a 1736 sq' 4 bedroom, 2 bath home with out buildings setting on 5 acres of open land with good exterior and cross fences. Lying in Sect. 10, Twp 60N, R12W, Knox County, MO

**Saturday, October 29<sup>TH</sup> at 10 AM**

**OPEN HOUSE: SUN OCT 9<sup>TH</sup> 1-2 PM**



4 Bedroom Home

ALSO SELLING PERSONAL PROPERTY

**STANLEY O'NEAL ESTATE**

**ADDITIONAL DETAILS, PHOTOS & AUCTIONS ONLINE!**

**THINKING OF SELLING LAND OR MACHINERY? LET OUR MOTIVATED STAFF WORK FOR YOU!**

**MONTY: 660-341-7412 OFFICE: 660-727-3796**