

FREE

NEW EDITION EVERY FRIDAY!
VOL. 29 • NO. 94 • NOVEMBER 11, 2022

NEMO Trader

THE NEMO TRADER

PO BOX 809 • KIRKSVILLE, MO 63501 • PHONE 660-665-8500

Web Site: nemotrader.net • Email: sales@nemotrader.net

A WEEKLY ADVERTISER SERVING ALL OF NORTHEAST MISSOURI AND THE SURROUNDING AREA

We offer Caping for out of state Hunters!

Wishing all of you a *SAFE*
and *SUCCESSFUL* Hunt!

RICK'S TAXIDERMISTRY

Master Taxidermist

1405 Fairview Dr. • Kirksville, MO 63501 • ESTB. 1987 • 660-627-7009 • Opening Weekend Hours 9am-7pm



CUSTOM GRAIN DRILLING
NO TILL

SPECIALIZING IN COVER CROPS
Devon Zimmerman
660.464.1324

WE CLEAN ANY EXHAUST FILTER
(diesel particulate filter, DPF)

- On The Market,
- Off Highway
- Ag • Construction

SHELBYVILLE AUTO PARTS INC.
TOWING & RECOVERY

CDIS
DPF, EGR, SCR cleaning

Shelbyville Auto Parts Inc
610 N. Shelby St. Shelbyville, Mo 63489
Phone: 573-633-2230 • Shelbyvilletowing.com

FARM & RANCH.

ELIZABETH GREGORY
660.621.2136
missourihomeandfarm.com

CENTURY21
Lifetime Realty

1605 Baltimore, Suite A
Kirksville
660.665.5678

Maximum Yield

- Industry leading yield retention
- Reduce cob bounce and shatter
- Increased harvest speeds

ELITE XL SERIES
Every Kernel Counts

GERINGHOFF
www.Geringhoff.com | (320) 252-4633

QUINCY TRACTOR LLC.
Contact Us!

Quincy Tractor
217-222-1392

Brookfield Tractor
660-258-7228

Hannibal Tractor
573-221-8212

Bowling Green Tractor
573-324-3337

QUINCYTRACTORLLC.COM

NEW CORN HEADS

QUINCY | GERINGHOFF NS1230 | 12 ROW 30", RIGID, 21 SPLINE OUTPUT SHAFT, END ROW AUGERS, 4 SENSORS INSIGHT CONTROLLER W FORESIGHT.....CALL

QUINCY | GERINGHOFF NS830 | 8 ROW 30", RIGID, END ROW AUGERS, 3 SENSORS INSIGHT CONTROLLER W FORESIGHT...CALL

USED CORN HEADS

HANNIBAL | MAINERO MDD100-24 | 2016, 24', BLACK SHIELDS.....CALL

BOWLING GREEN | MAINERO MDD100-31 | 2016, 31'.....\$31,500

HANNIBAL | GERINGHOFF NS1230F | 2007, NO END CONES, 12 ROW 30"\$49,000

HANNIBAL | NEW HOLLAND 98D830 | 2012.....CALL

HANNIBAL | NEW HOLLAND 98D830 | 2010, 8 ROW 30"\$18,000

QUINCY | NEW HOLLAND 98C830 | 2005.....CALL

QUINCY | NEW HOLLAND 98C830 | 2008, 8 ROW 30"\$12,500

QUINCY | NEW HOLLAND 98C830 | 2008, METER CORN REEL.....\$16,500

HANNIBAL | CASE IH 3408 | 2009, 8 ROW 30', NEW GATHERING CHAINS, NEW SPROCKETS, 100 ACRES ON THEM... ..\$24,000

QUINCY | CASE IH 3408 | 2012, NO END CONES, 360 YEILD BRUSHES, 3 SENSOR HEADER HEIGHT... ..\$26,500

QUINCY | CASE IH 3408 | 2010, NO END CONES.....CALL

HANNIBAL | CASE IH 3208 | 8 ROW 30".....CALL

THE POLARIS
**AGRICULTURAL
ADVANTAGE PROGRAM**

Exclusively for farmers and ranchers.
Polaris is committed to supporting the agriculture community through industry-leading vehicles, partnerships and programs for the community.



2318A East Illinois Street • Kirksville, Mo 63501
660-627-1727 • www.precision-cycle.com

Follow us on

NOW HIRING
Multiple positions available including:
Diesel Technician, Body Technician, Tire Technician,
Detail Shop, Shipping Receiving, Parts Route Consultant.

BALL VOLVO
FULL SERVICE HEAVY DUTY TRUCK DEALERSHIP
22280 Hwy 136 • Kahoka, MO 63445
660-727-3358 • balltrucks.com/

AGRI-BUSINESS

Cattle

Angus and Balancer Bulls, conditioned to work. Over 55 years breeding. Total performance, A.I. Sires. Rutledge 641-344-4565

Neese Angus Bulls, bred and developed to work for you! Performance records, E.P.D.S., A.I. Sired. Rutledge 641-344-4565

18 month old polled Hereford bulls, \$2,200.00. Circle C Herefords, Powersville, MO. 660-216-3465.

100 black Angus cow calf pairs. Cows open, 3 to 6 years old. Fancy, \$2,000.00. 660-988-0685.

Equipment & Supplies

1985 Liebherr 731-C, 150 HP Dozer, 12' Blade, ONLY 4989 hours. Farmer owned last 25 Years. Excellent condition. \$32,000. 660-676-9676

Farmall 706 gas, 1966, 72 HP, factory wide front, flat top fenders, fast hitch, new seat, lot of recent work done with new parts, runs good with Dunham Lehr hydraulic bucket loader, \$6500. 217-257-1385

**BUCKMAN
MACHINERY, LLC**
573-881-3557

John Deere 752 4-Basket Tedder, low acres, field ready, \$2,250

John Deere 4450, MFWD, ps, 90% rubber, 10,000 hrs, loader available. \$39,500

John Deere 3020 D, 1968, powershift, 9000 hrs, very straight, Good rubber, Loader Available. \$12,250

John Deere 3010 Diesel, 148 Loader, Hydr valve, good rubber \$8,950

Ground Driven JD Manure Spreaders, Refurbished, \$1,750 Choice

John Deere 5200 w/520 Loader, 200 hrs shown, mechanically sound, little on the rough side. \$15,500

John Deere 3020 Gas, powershift, 90% big rubber, dual hydr, 4100 hrs, one owner, really nice, loader available \$8,950

Loaders & Duals available for many

READY TO CAPITALIZE ON RECORD LAND VALUES?
CALL THE LAND SPECIALISTS.

WHITETAIL PROPERTIES REAL ESTATE
HUNTING | RANCH | FARM | TIMBER
WHITETAILPROPERTIES.COM

RANCH & FARM AUCTIONS
A DIVISION OF WHITETAIL PROPERTIES REAL ESTATE, LLC
RANCHANDFARMAUCTIONS.COM

CONTACT ME TODAY TO LEARN MORE ABOUT SELLING YOUR HUNTING, FARMLAND OR PASTURELAND ON THE OPEN MARKET OR TAKING IT TO AUCTION.

JEFF PROPST
Whitetail Properties Real Estate LLC.
Agent, Land Specialist
Northeast and North Central Missouri
636.209.0362
jeff.propst@whitetailproperties.com



Whitetail Properties Real Estate, LLC DBA Whitetail Properties, DBA Whitetail Trophy Properties Real Estate LLC. Licensed in CO, MN, ND, SD, TN & WI - Jeff Evans, Broker. Licensed in FL, KS & MO - Jefferson Kirk Gilbert, Broker. Licensed in TX & NM - Joey Bellington, Broker. Licensed in IN - Bill Minor, Broker. Licensed in AL, GA, LA, & MS - Sybil Stewart, Broker. Licensed in TN - Tim Burnette, Broker. Licensed in TN & MS - Josh Monk, Broker. Licensed in AR - Anthony Chrisco, Broker. Licensed in NC, SC, VA - Chip Camp, Broker. Licensed in IA, NC - Richard F. Baugh, Broker. Licensed in MI - Edmund Joel Nogaski, Broker. Licensed in IL, MD, WV - Debbie S. Laux, Broker. Licensed in ID, MT, OR, UT, WA, WY & NV - Aaron Milliken, Broker. Licensed in NY - John Myers, Real Estate Broker. Licensed in OK - Dean Anderson, Broker. Licensed in KY - Derek Fisher, Broker. Licensed in OH - Jeremy Schaefer, Principal Broker. Licensed in NE & SD - Jason Schendt, Broker. Licensed in MS - Chipper Gibbs, Broker. Licensed in PA - Jack Brown, Broker.



Equipment & Supplies

Farmall M, Schwartz wide front, matching 15.5x38 75% tread or better on good rims, OD transmission, live power, stored inside, non running, \$1400. 217-257-1385

2 sets of leather draft work harness, \$300.00 each. Also several collars, all in good shape. 660-342-5314.

Hay rack with treated floor also 2 year old paint appaloosa crossed filly, \$950, gentle. 660-342-5314.

Working Magnetos for old tractors small engines; 8N Ford tractor, runs good; carburetors for 2 cyl JD tractors; lots of new parts for older tractors, cars and magnetos. 573-439-5088

NH3 14 knife DMI 4300 WT on M and wings, raven cooler closing wheels monitor; Krause 30' disk, \$2000.00 disk. 217-658-4761

Progressive 12 knife NH3 2 no till cutters in front of each knife, raven cooler, markers monitor. Closing wheels for strip till. 217-658-4761.

International plow, 3 bottom, pull type. 660-956-6826.

John Deere 3 bottom plow, pull type. 660-956-6826.

Landoll 7430 33' verticle tillage rolling basket, hyd for aft; vertical tillage GP 3000 turbo till rolling basket. 217-658-4761.

BWS
Brad's Welding Shop
12673 Almond Ave.
Marceline, MO 64658
660-376-1158

- Hay Liner Trailers
- Red line Harrows
- Continuous Panels
- Bale Feeders
- Arrowquip Cattle Equipment

bradsweldingshop.com

FRONTLINE FENCING LLC

- Steel Pipe Fencing
- Heavy Duty gates
- Custom Built Cattle Handling Equipment
- New -
- Ranger Cattle Chutes
- Post Driver Rental

29386 State HWY T • Greentop, MO
660-956-2430

\$9.99 **HUNT BROTHERS PIZZA**
One-Topping Pizza

WEEKLY SPECIALS

- **MONDAY:** Meatloaf, Mashed Potatoes & Green Beans **\$8.00**
- **TUESDAY:** 2-Taco Burritos or 2 Taco Shells **\$5.00**
- **WEDNESDAY:** Spaghetti, Garlic Bread & side salad **\$8.00**
- **FRIDAY:** "Cook's Choice" Soup of the Day w/Sandwich **\$6.00**

Game Day
129 E. Moore Street
La Plata, MO 63549
660-587-2013
Mon, Tues, Wed, Fri & Sat 11am-8pm
Sunday 11am-3pm • CLOSED THURSDAY

You can dine in or order and pick it up at the drive through window!

BOYER LAND COMPANY, LLC
RECREATIONAL, AG, AUCTION, INVESTMENT

SCOTLAND COUNTY

\$3,599,375

165+/- ACRES + CUSTOM BUILT HOME

165+/- Acre Property Features:

- A newer custom-built home, 4-bedroom, 4-bathroom
- Overlooking the draws, timber, and bottom fields
- Total seclusion with the feeling of total privacy
- Large shouse w/ heated floors & full living quarters attached
- Large storage sheds
- Lifetime shingles on home
- Lifetime hot water heaters
- Large, stocked pond
- 16.3 Acres ROW crop

****Property can be sold as 82 acres+home and 40 acres+home****

AGENTS: **ANDY BOYER** 636-295-1476
CODY KICE 660-341-5862
www.boyerlandcompany.com

BOYER LAND COMPANY, LLC
RECREATIONAL, AG, AUCTION, INVESTMENT

Check out our hunting farm listings below

<p>60+/- ACRES MERCER COUNTY</p> <p>Recreation, CRP, Possible Tillable -QDM Area -Utilities at road -Building Site -Proven Producer</p> <p>Andy Boyer, agent, 636-295-1476 \$338,000</p>	<p>180+/- ACRES LINN COUNTY</p> <p>-Great place to build/Nice Cabin and outbuildings -CRP and Timber -Numerous large bucks hunted over the years -Excellent turkey hunting</p> <p>Andy Boyer, agent, 636-295-1476 Abbott Shoop, agent, 573-821-5472 \$882,000</p>
<p>334+/- ACRES LINN COUNTY</p> <p>-Premier Hunting Farm plus income -Extensively managed for white-tailed deer -Upkeep of food plots</p> <p>Andy Boyer, agent, 636-295-1476 \$1,970,600</p>	<p>80+/- ACRES SULLIVAN COUNTY</p> <p>-Proven Producer -turnkey hunting farm with 3 blinds and food plots -Excellent spot for the avid hunter</p> <p>Tyler Arnold, agent, 660-292-4024 \$360,000</p>
<p>177+/- ACRES SULLIVAN COUNTY</p> <p>-Most intensely managed areas -Turnkey with blinds and plots -Farm hunts huge for 177 +/- Acres</p> <p>Tyler Arnold, agent, at 660-292-4024 \$778,800</p>	<p>153+/- ACRES MERCER COUNTY</p> <p>-Known for its management practices -Best big buck areas in North Missouri -Perfect for the serious hunter</p> <p>Jason Courtrey, agent, 816-654-2144 \$856,800</p>
<p>72.4 +/- ACRES CLARK COUNTY</p> <p>-Nice mature Timber -Excellent hunting and income -BIG MATURE BUCKS and LONGBEARD TURKEYS -Very Secluded</p> <p>Mike Frazier, agent, 660-341-5729 \$398,200</p>	<p>216+/- ACRES LEWIS COUNTY</p> <p>-Highly productive farm land with abundant Wildlife -Well known for it turkey hunting -Easy to hunt multiple winds</p> <p>Cody Kice, agent, 660 341-5862 \$1,447,200</p>

Online Only Auction
Hay & Livestock Equipment

Bidding Begins to Close Thursday, November 17, 2022 at 7:00 PM

Forage

- (60) Bales of 2022 Brome Hay, Cover Edge Net Wrap
- (11) Bales of 2022 Grass Hay, Cover Edge Net Wrap
- (80) Bales of 2022 Grass Hay, Some Clover, Cover Edge Net Wrap
- (30) Bales of 2022 CRP Hay, 5ft Bales, Net Wrap, 15% Moisture
- (7) Bales 2020 Hay for Grinding
- (65) Bales 2022 Grass Hay, Net Wrap
- (125) Bales 2020 Grass Hay, Net Wrap
- (200) Square Bales 2022 Mixed Grass Hay, Never Wet, Stored Inside
- (100) Square Bales 2022 Out Straw, Never Wet, Stored Inside

Equipment

- Go Bob Hay Monster Double Bale Ring, Like New
- Hesston 1340 Mower Conditioner
- (2) New Skid Steer Mount Bale Spears
- Livestock Load Out Chute
- Tumble Bug Hay Dolly
- New 2022 Hay Toter 42ft 8 Bale In Line Hay Trailer
- New GWS Portable Steel Feed Bunk
- WorkSaver Skid Steer Mount Post Pounder
- New DH Farms 35ft Gooseneck Flatbed Trailer
- 350 Bu. Gravity Wagon
- 3 Point Blade
- WW Steel Livestock Panels
- Steel Livestock Alley
- Round Pen (9) 12 - Foot Panels
- Country Clipper Edge XLT Mower, 230 Hours
- Dog Kennel
- Numerous Fencing Materials

More By Sale Day!

Weaver Auction Company, LLC
Visit Our Website for Details & Bidding
www.WeaverAuctionCompany.com
Follow Us On Facebook!

Tyler Weaver 660-216-9735 ~ Auctioneers ~ Scott McCoy 641-799-4440

Animal Housing, Hay Storage & Much More!!

Skylight Fabric Structures
20749 State Highway VV
Ethel, MO 63539
660-486-3250
833-482-8862



VETERANS DAY

HONORING ALL WHO SERVED

History of Veterans Day

World War I – known at the time as “The Great War” - officially ended when the Treaty of Versailles was signed on June 28, 1919, in the Palace of Versailles outside the town of Versailles, France. However, fighting ceased seven months earlier when an armistice, or temporary cessation of hostilities, between the Allied nations and Germany went into effect on the eleventh hour of the eleventh day of the eleventh month. For that reason, November 11, 1918, is generally regarded as the end of “the war to end all wars.”

In November 1919, President Wilson proclaimed November 11 as the first commemoration of Armistice Day with the following words: “To us

in America, the reflections of Armistice Day will be filled with solemn pride in the heroism of those who died in the country’s service and with gratitude for the victory, both because of the thing from which it has freed us and because of the opportunity it has given America to show her sympathy with peace and justice in the councils of the nations...”

The original concept for the celebration was for a day observed with parades and public meetings and a brief suspension of business beginning at 11:00 a.m.

The United States Congress officially recognized the end of World War I when it passed a concurrent resolution on June 4, 1926, with these words:

Whereas the 11th of November 1918, marked the cessation of the most destructive, sanguinary, and far reaching

war in human annals and the resumption by the people of the United States of peaceful relations with other nations, which we hope may never again be severed, and

Whereas it is fitting that the recurring anniversary of this date should be commemorated with thanksgiving and prayer and exercises designed to perpetuate peace through good will and mutual understanding between nations; and

Whereas the legislatures of twenty-seven of our States have already declared November 11 to be a legal holiday: Therefore be it Resolved by the Senate (the House of Representatives concurring), that the President of the United States is requested to issue a proclamation calling upon the officials to display the flag of the United States on all Government buildings on November 11 and inviting

SPLASH & DASH
 HOT WATER
 GOOD PRESSURE
 GOOD SOAP
 HEATED BAYS
660-342-1151 ASK US ABOUT OUR PREPAY OPTIONS!
 Shawn Perry - Owner
 1411 South Osteopathy
 Kirksville, MO

KIRKSVILLE MOTOR COMPANY
 GMC TOYOTA CHEVROLET
JIM BROWN
 “For your next vehicle purchase, come see me”
 Cell: 660-216-2190
 Desk: 660-956-7102

From our Board of Directors and Employees
 Thank you!
VETERANS DAY
 HONORING ALL WHO SERVED
NEMR
 It's Faster! It's Fiber! It's NEMR!
 www.nemr.net

KIRKSVILLE MOTOR COMPANY
 Sales (660) 956-0212
 Service (660) 956-0809
 Parts (660) 665-1936
 kirksvillemotorcompany.com
 3607 N. Baltimore Street Kirksville MO 63501-5128 US

Good Guys Glass & Auto, LLC.
 Happy Veterans Days!!
 Thank you for your service!
 2019 Best Winner

SCOTTY'S AUCTION SERVICE
 FARMS-LAND REAL ESTATE MACHINERY ESTATE SALES
 573-356-4405
 ScottysAuctionService.com

Wholesale Guitars, Musical Instruments
 Al Johnson
 bigal@marktwain.net
ELECTRONICS UNLIMITED
 Open 6 days a week!
 17406 Bob Rd. Kirksville, Mo 63501
 Office: 660-665-8149 Cell: 660-341-0965

Casady-Luscan FUNERAL SOLUTIONS
 Celebrating One Family At A Time
 Full Funerals beginning @ \$4,995
 Direct Cremation \$1,495
 Owners:
 Howard Luscan Funeral Director/Embalmer
 Casandra Casady-Luscan Office Manager/Funeral Director
 355 West Front Street
 Green Castle, MO 63544
660-265-6425

Thank-You Veterans, especially ours.
 Polly Petree Hampton
THE BENSON LAW FIRM LLC
 (660) 627-0111 www.BensonLawFirm.com

TAN & GUNS LTD
 Starting November to February we will be OPEN on Mondays 9am-4pm
 2301 S. Franklin St • Kirksville, MO • 660.627.5039
 Tuesday - Friday 9-5 • Saturday 9 - 4 • Sunday Closed

Thank You

FOR YOUR SERVICE

the people of the United States to observe the day in schools and churches, or other suitable places, with appropriate ceremonies of friendly relations with all other peoples.

An Act (52 Stat. 351; 5 U. S. Code, Sec. 87a) approved May 13, 1938, made the 11th of November in each year a legal holiday—a day to be dedicated to the cause of world peace and to be thereafter celebrated and known as “Armistice Day.” Armistice Day was primarily a day set aside to honor veterans of World War I, but in 1954, after World War II had required the greatest mobilization of soldiers, sailors, Marines and airmen in the Nation’s history; after American forces had fought aggression in Korea, the 83rd Congress, at the urging of the veterans service organizations, amended the Act of 1938 by striking out the word “Armistice” and inserting in its place the word “Veterans.” With the approval of this legislation (Public Law 380) on June 1, 1954, November 11th became a day to honor American veterans of all wars.

Later that same year, on October 8th, President Dwight D. Eisenhower issued the first “Veterans Day Proclamation” which stated: “In order to insure proper and widespread observance of this anniversary, all veterans, all veterans’ organizations, and the entire citizenry will wish to join hands in the common purpose. Toward this end, I am designating the Administrator of Veterans’ Affairs as Chairman of a Veterans Day National Committee, which shall include such other persons as the Chairman may select, and

which will coordinate at the national level necessary planning for the observance. I am also requesting the heads of all departments and agencies of the Executive branch of the Government to assist the National Committee in every way possible.”

On that same day, President Eisenhower sent a letter to the Honorable Harvey V. Higley, Administrator of Veterans’ Affairs (VA), designating him as Chairman of the Veterans Day National Committee.

In 1958, the White House advised VA’s General Counsel that the 1954 designation of the VA Administrator as Chairman of the Veterans Day National Committee applied to all subsequent VA Administrators. Since March 1989 when VA was elevated to a cabinet level department, the Secretary of Veterans Affairs has served as the committee’s chairman.

The Uniform Holiday Bill (Public Law 90-363 (82 Stat. 250)) was signed on June 28, 1968, and was intended to ensure three-day weekends for Federal employees by celebrating four national holidays on Mondays: Washington’s Birthday, Memorial Day, Veterans Day, and Columbus Day. It was thought that these extended weekends would encourage travel, recreational and cultural activities and stimulate greater industrial and commercial production. Many states did not agree with this decision and continued to celebrate the holidays on their original dates.

The first Veterans Day under the new law was observed with much confusion on October

25, 1971. It was quite apparent that the commemoration of this day was a matter of historic and patriotic significance to a great number of our citizens, and so on September 20th, 1975, President Gerald R. Ford signed Public Law 94-97 (89 Stat. 479), which returned the annual observance of Veterans Day to its original date of November 11, beginning in 1978. This action supported the desires of the overwhelming majority of state legislatures, all major veterans service organizations and the American people.

Veterans Day continues to be observed on November 11, regardless of what day of the week on which it falls. The restoration of the observance of Veterans Day to November 11 not only preserves the historical significance of the date, but helps focus attention on the important purpose of Veterans Day: A celebration to honor America’s veterans for their patriotism, love of country, and willingness to serve and sacrifice for the common good.

VETERANS DAY
HONORING ALL WHO SERVED

LANCASTER LUMBER INC.
115 W. WASHINGTON
LANCASTER, MO
800-424-5071
www.lancasterlumber.com
Landow buildings

Thank you Veterans!

The Gun Grove
Tuesday-Friday 10am-6pm
Saturday 10am-5pm

708 Patton St
Macon, MO
660-395-7400
www.gungrrove.com

fb farmbank
Thank You Veterans

1 S. Lincoln St. Green City, MO 660-951-8430
701 N. Pearl St. Milan, MO 660-951-8432
3311 N. Baltimore Kirksville, MO 660-951-8431

www.farmbank.com

Travis Funeral Chapel
Honoring Veterans Day

125 South Church Street
La Plata, MO 63549
660-332-7145
travisfuneralchapel.com

Serving La Plata, Missouri & surrounding communities since 1980.

Happy Veterans Day

Good Guy's Shuttle, LLC

1302 N. Baltimore Street
Kirksville, MO
660-341-0746
goodguysshuttle@gmail.com

Transportation to weddings, events, concerts, games & airport

JEPSON LUMBER
“The Best For Less”

KIRKSVILLE MACON
660-665-0313 660-385-4712

Thank you!

VETERANS DAY
WITH HONOR AND RESPECT
HONORING ALL WHO SERVED

SAYRE AUCTION, LLC
Family Owned & Operated Since 1978
809 West Dake Str. • Brookfield, MO
www.sayreauction.com • 660-734-8782

THANK YOU VETERANS
Honoring all who served

701 East LaHarpe Street Ste. C • Kirksville, MO • 660-665-8500
nemotrader.net

ERICK HANSON
Broker-Sales Associate

660-341-5014 Cell
660-665-5678 Office
erickhansoncentury21@gmail.com
www.c21kirksville.com

Century 21 Lifetime Realty
1605 S. Baltimore St, Suite A
Kirksville, MO 63501

Each office is independently Owned and Operated

SERENITY INSURANCE GROUP

MICHAEL BOND
SENIOR BENEFITS SPECIALIST
MOBILE (660) 269-8899
OFFICE (636) 674-9744

HONESTY . INTEGRITY . FAMILY

11th November
VETERANS DAY
Honoring All Who Served

Bank of New Cambria
New Cambria & Bevier

24 Hour ATM
Member FDIC

200 S. Main St. New Cambria, MO 63558 660-226-5211
1003 State Hwy. C Bevier, MO 63532 660-773-5211

www.banknewcambria.com

VICTORY Metals & Recycling
Kirksville, Mo 660-665-8000

VICTORY METALS WANTS TO THANK ALL THE VETERANS

- METALS & RECYCLING
- ROLL-OFF CONTAINERS

3602 Industrial Rd, Kirksville, MO 63501
660-665-8000 • victorymetalrecycling.com

Request For Bids

2022-2023 Season

Snow removal for County owned or leased properties - includes all parking and sidewalks at each of the following locations:

- Courthouse - 106 W. Wahington
- Annex Building - 300 N. Franklin
- Sheriff Office - 215 N. Franklin
- 309 N. Franklin Street Location
- 310 Elson Street Location
- 311 Elson Street Location
- 2817 N. Baltimore (former Maritz Building)

ADDITIONAL BID COMMENTS:

- The bid must include the following to be considered complete:
- Bid Summary
 - Terms
 - Breakdown of price per location

All Bids must be returned by: **NOVEMBER 28, 2022, BY 4:00 PM.**
Bids will be opened in the Commissioner's Office at a date and time to be determined by the Commission.

RETURN BIDS TO:

Adair County Clerk
Sandy Collop
311 N. Elson Street
Kirksville, MO 63501
scollop@adaircom.com

BIDS MAY BE MAILED, EMAILED, OR DELIVERED IN PERSON

REFER ALL BID INQUIRIES TO:

Adair County Building & Grounds Supervisor, Joe Nicol
106 West Washington
Kirksville, MO 63501
(660)216-1286
Maintenance@adaircom.com

****DO NOT SEND BIDS TO THE BUILDING & GROUNDS OFFICE****

We reserve the right to accept or decline all or any part of the bid. If you decline to bid, please so advise promptly indicating briefly the reason.



Friday, November 11th
Special Feeder Calf and Cow Sale

Friday, November 18th
Special Feeder Calf Sale

To Consign For Any or All Sales or For Information Call:
Owner - Kevin Strange • Cell: 660-341-9974
Ryan Strange • Cell: 660-341-9721
Sale Barn: 660-397-9999

Field Reps:

Bill Tom Hall 660-342-5420 Mike Bronestine 660-341-9965
Jason Bichsel 660-216-0373 John Powell 660-341-1717

Golden Grain Bins-Winter Discount

Grain Bins	Floors w/12" Supp. & Flashing
18'x18' 4,195bu. \$ 6,511	18'....\$1,817 30'....\$ 5,072
27'x21' 11,265bu. \$13,069	21'....\$2,485 36'....\$ 7,226
42'x24' 32,245bu. \$30,463	27'....\$4,145 42'....\$ 9,840



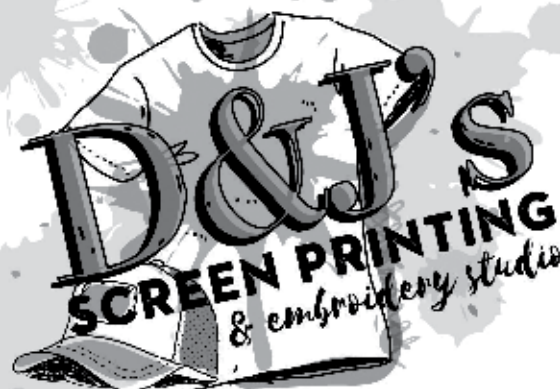
GMLS Industries, Inc.
PH: 660-699-2179 or 620-983-2136
www.gmlsindustries.com

CHRISTMAS IN NOVINGER

Saturday, November 19, 2022

OVER 120 BOOTHS IN THREE LOCATIONS:
COUNTRY CHRISTMAS CRAFT FESTIVAL - NOVINGER SCHOOL, 9-3
HOLIDAY BAZAAR - NOVINGER COMMUNITY CENTER, 9-3
SHOPPERS DELIGHT - NOVINGER FIRE HOUSE, 9-4

LOCALLY OWNED & OPERATED!



SCREEN PRINTING
EMBROIDERY
SHIRTS + HATS
TROPHIES, AWARDS & PLAQUES
BANNERS
AND MORE!

660.665.8001
KIRKSVILLESHIRTS.COM

475 Acres Randolph/Audrain County Real Estate Auction MACC ACTIVITY CENTER 101 COLLEGE AVENUE. MOBERLY MO WEDNESDAY DECEMBER 7 2022. 10 AM

Due to the death of CG and Mary Anne Davis we will sell the following at Public Auction.

AUCTIONEERS NOTE: The Davis Family started with these farms in the 1920's and added some in the 1950's. This is the first time they have been for sale in decades. These 475 acres of good tillable and recreation ground are all contiguous. This is a rare opportunity to purchase land, a concrete asset to farm, hunt, or invest in close to Moberly and a short drive to Columbia. Please Join us on the 7th for this wonderful offering. All tracts will be sold choice to the highest bidder being able to pick which tracts the buyer wants. The farms are surveyed and ready for the next owner but they do sell subject to the Trust conformation. Please Call Dave Atkinson 660-788-3333 or Jerry Crutchfield 660-670-1249 for more information or check missourilandandfarm.com for pictures and bidding information.

**FARMS LOCATED ON HIGHWAY NN AND CR 152
4.5 MILES EAST OF HIGHWAY 63 SOUTH OF MOBERLY MO.**
Online bidding will be available.
Open House on Saturday, Nov. 19 from 11 PM-2 PM

Parcel 1: 82.8 acres is located in Audrain Co being sold in 2 tracts.
Parcel 2: 292.4 acres located in Randolph Co being sold in 14 tracts easements are included in the survey. Tracts vary from 17.5 acres to 23.9 acres with tillable and recreational ground available. All tracts vary in tillable and woods. Good building sites, Tillable, Hunting.
Parcel 3: 99.8 acres located in Randolph Co being sold in 4 tracts 21 acres to 31 acres. Nice recreational ground with building sites on black top highway.

Terms: 10 percent down auction day with balance due at closing. Closing will be on or before Jan 30th 2023. Statements Auction Day take precedence over all ads and printed material. All acres have been surveyed and will be sold by the acre. All farms sold subject to owner confirmation.

CG & MARY ANNE DAVIS FARMS, SELLER

MISSOURI LAND AND FARM AUCTIONS
Dave Atkinson 660-788-3333
Jerry Crutchfield 660-670-1249

Pick one of these *bernette beauties* and get **BERNINA V9 Creator Software FREE**!

Looking for a machine that's easy to operate, fun to use and keeps up with all your sewing inspirations? These *bernette* machines deliver.

bernette 79
\$2,995 **\$2,199**
Top-of-the-line model for sewing and embroidery.

YOURS FREE!
BERNINA V9 Creator Software
a \$1,199 value

bernette 70 DECO
\$2,269 **\$1,699**
Focuses exclusively on embroidery.

bernette
SWISS DESIGN

Green Acres Sew & Vac
221 W Grand Ave.
Memphis, MO
660-465-7131
greenacressewvac.com

*Offer valid until Dec. 31, 2022. See store for details.

GREEN CITY LIVESTOCK MARKETING, LLC

19037 HWY 129 S. GREEN CITY MO 63545
(660) 874 - 4146 • www.greencitylivestock.com

NEXT SALES:

Saturday, Nov. 12th
Special Cow, Bred Heifer, & Breeding Bull Sale

Wednesday, Nov. 16th
Red, White, & Black Special Calf & Yearling Sale

Tuesday, November 22nd
Special Thanksgiving Yearling Sale

Friday, November 25th
Special Thanksgiving Calf Sale

2,077 head were sold at the November 2nd Annual Angus & Angus Factored Calf & Yearling Sale. Compared to the last tested market four weeks ago, steers and heifers traded mostly 2.00 lower to 2.00 higher with some top quality weaned steer calves under 550 lbs sharply higher. Slaughter cows steady to 3.00 lower. Demand was good for all weights and classes of cattle this week, even those unweaned or with a short health history.

STEERS		HEIFERS	
Dennis Wilson	448 Ang 210.00	Steve Young	707 Ang 173.00
Stacy Weaver	450 BBWF 215.00	Randy Radcliff	725 BBWF 177.50
Les & Alice Mills	452 Ang 242.00	Lonnie & Kim Salter	778 Mix 175.50
Reed & Snyder	463 BBWF 238.50	Gary Grubrich	791 Ang 186.25
Jacob Reeves	464 Ang 211.00	Putnam Co.	848 BBWF 185.00
Greg Klokkenga	498 BBWF 200.00	Biggs Angus	892 BBWF 182.00
Thomas Christen	498 BBWF 219.00	Kenny & Rhonda Creason	941 Ang 180.25
Brad & Matt Ayers	501 Ang 225.50	HEIFERS	
Rodney May	502 Mix 199.00	Reed & Snyder	412 Ang 200.00
Terry Rodman	512 Mix 188.00	Westfall Bros.	425 BBWF 203.00
Mike Moffitt	517 Ang 197.00	Les & Alice Mills	454 Mix 186.00
Les & Alice Mills	529 Ang 214.50	Stacy Weaver	461 Mix 183.00
David P. Callihan	533 Ang 211.00	Dennis Wilson	473 Ang 181.00
Tyler Riedeger	540 Mix 201.50	Geosling Farms	473 Mix 178.00
Charity Taylor	546 BBWF 207.00	Tyler Riedeger	490 Mix 180.50
Harold & Bill Scott	555 Ang 198.00	Charity Taylor	500 BBWF 184.00
Oscar & Gaston Mensa	562 Ang 209.50	Reed & Snyder	519 Ang 185.00
Phil & Todd Halley	568 Ang 207.00	Oscar Mensa	533 Ang 185.00
Geosling Farms	572 Mix 195.00	David P. Callihan	591 BBWF 172.00
Charles Clapp	580 Ang 198.00	Harold & Bill Scott	598 Ang 185.00
TEC Packing	582 Ang 183.50	Gregg Steele	605 Mix 181.00
Kevin Lawson	585 Ang 189.00	Barbara Jacobs	615 Ang 180.00
Reed & Snyder	598 BBWF 201.25	Gary Grubrich	624 Ang 187.75
Gregg Steele	608 Ang 185.00	Oscar Mensa	626 Ang 179.00
Brad & Matt Ayers	610 Ang 194.75	Lonnie & Kim Salter	650 Mix 160.00
Steve Young	613 Ang 190.00	Alan Linder	704 Mix 163.00
JD Wright	630 Ang 175.00	Gary Grubrich	720 Ang 185.50
Jerry Crawford	653 Ang 180.00	Phil Fleshman	754 Mix 175.25
		Andrew Watt	790 Mix 155.00

WEBSITE: www.greencitylivestock.com • BARN: 660-874-4146

OWNERS

Darren Hodgen: 573-999-3252 • Cody McClamroch: 660-349-6535
Caleb Biggs 660-654-4630 • Operations Manager: Steve Evans, 660-375-2545

FIELD REPS

Chuck Daniels: 660-626-7621
Steve Frazier: 660-626-7066 • Jeff Gray: 660-956-8251
Justin Morgan: 660-292-2638 6

We are your top market for all classes of cattle
We value and appreciate your business!

FOR SALE
AI Sired Angus Bulls,
14 & 18 Months Old.
Harold Trump
660-341-5730

Premium
Metal Roofing

AW Metal Inc.
Metal Roofing Headquarters
641-664-3990 • ammetal.net



LAN-DOW BUILDINGS

"We Build To Suit Your Needs"
"Custom Built"

Pole Barns • Garages • Utility Buildings
"H" Don or Dick Middleton

Memphis Lumber Co.
1-800-337-5858 • 660-465-8595
Fax: 660-465-8596

WE GOT YOUR NEEDS COVERED!



FARM TARPS **TRUCK TARPS**
HOOP BUILDING COVERS

Troyer

TARP MFG.

660-486-3301
20264 STATE HWY. VV • ETHEL, MO 63539

Starting November to February we will be OPEN on Mondays 9am-4pm

7-N-7 GUNS LTD

2301 S. Franklin St • Kirksville, MO • 660.627.5039
Tuesday - Friday 9-5 • Saturday 9-4 • Sunday Closed

KEIM LUMBER COMPANY LLC
COMPETITIVE PRICES • FREE ESTIMATES

- COMPLETE BUILDING PACKAGES
- WINDOWS AND DOORS
- INSULATION • DRYWALL
- DELIVERY

13625 St. Hwy 3 LaPlata, MO

Gifford Christian Church
Fall Smorgasbord

Saturday-November 12, 2022
11:00 am to 1:00 pm

Turkey, Ham, Dressing, Noodles,
Green Beans, Corn, Salads and Desserts

All You Can Eat!
Free Will Donation

Come Out and Have Some
Great Food and Fellowship

Call us for all your advertising needs. 660-665-8500.

Buckman Machinery



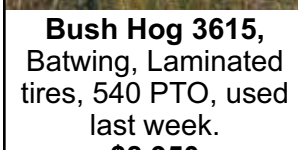
One station 100 + hp John Deere Tractors, 6420, 6410, all approx. 4500 hrs, triple hydr, mechanically sound, \$15,950 choice.



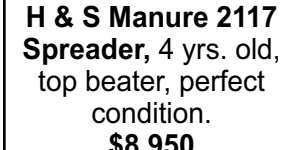
John Deere 4020, 1966, powershift, 85% rubber, with one owner, 9017 hrs, \$12,500



Bush Hog 3615, Batwing, Laminated tires, 540 PTO, used last week. \$8,950



H & S Manure 2117 Spreader, 4 yrs. old, top beater, perfect condition. \$8,950



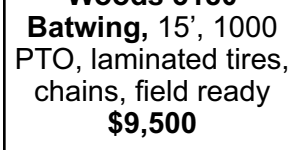
John Deere 5320, MFWD, roll bar & canopy, 6500 hrs, well maintained, 95% rubber, JD 541 Loader available. \$21,500



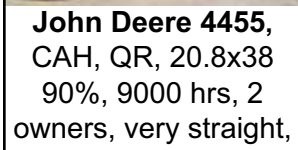
Woods 3180 Batwing, 15', 1000 PTO, laminated tires, chains, field ready \$9,500



John Deere 4455, CAH, QR, 20.8x38 90%, 9000 hrs, 2 owners, very straight, \$37,500



John Deere 7230 power quad, reverser, JD 741 Loader, 7400 hrs, above average condition, \$69,500



573-881-3557

Signature
Overhead Doors and Remodeling, LLC

660-785-0248

www.signatureremodelingkv.com

Residential and Commercial Installation and Service

CUSTOM GRAIN HARVESTING

Call Steve

660-342-5678

TRU MEAT PROCESSING

ATTENTION HUNTERS! We Process Deer

BEEF • PORK • DEER

QUALITY CUT PLUS
VACUUM SEAL
CURE & SMOKE • SHARE THE HARVEST
CUSTOM MEAT PROCESSING

We also sell live beef from our farm by whole, halves, and quarters that can be processed at our facility.

Contact the Hostellers

Office: 573-439-5290 7500 Shelby 352
Sam: 573-789-3012 Shelbina, MO
Amos: 573-934-3391 63468

Your Local

FARM SUPPLY SOURCE

NUTRITION • MEDICAL • FARM • PET • APPAREL

Featured Product

JOY DOG FOOD

MENTION THIS AD AND RECEIVE: **\$4 OFF** PER BAG • *5 BAG LIMIT

IN STOCK!
SUPER MEAL • HIGH ENERGY
PUPPY FOOD • ADULT FORMULA 26-18

Hometown Animal Health has provided quality products, expert knowledge, and friendly customer service to northeast Missouri and surrounding areas. We are a full-service nutrition, medical, and farm supply source carrying complete lines of animal feed and supplies, farming equipment, agricultural parts, lawn and garden tools, work apparel, and much more!

Hometown ANIMAL HEALTH

Feed • Medical • Farm & Pet Supplies • Footwear & More

website: hometownanimalhealth.com

660-465-2967

18743 US Hwy, 136 Memphis, MO 63555
"on Hwy 136 west of Memphis"

Monday-Friday 8pm to 5pm
Saturday 8am to 1pm

WE'VE GOT YOUR DREAM JOB ON A SILVER PLATTER

Keep up-to-date with dozens of top job postings throughout your local area. Find your perfect new permanent or temporary position in the classifieds!

MISSOURI CANCER ASSOCIATES
George Rae Cancer Center

Cancer Care Close to Home.

No Referral Needed

40 years
MISSOURI CANCER ASSOCIATES
1982-2022

We give care. We give courage. We give hope.

"I've never felt so comfortable in a medical community as I have with MCA. The system, the process, and EVERY staff member is amazing and always puts me at ease."
-Madelyn

"Every individual I came in contact with was friendly and caring. I have been to 3 different medical facilities and there is no comparison."
-Joe

(866) 724-2413 | 603 W Pierce St. Kirksville, MO
www.missouricancer.com

BOYER LAND COMPANY, LLC
RECREATIONAL AG AUCTION INVESTMENT

Check out our tillable farm listings below

<p>233 +/- Acres/ Linn, Adair, Sullivan County Line</p> <ul style="list-style-type: none"> -very good soils -3.4% ROI -213 +/- tillable crop -Water and electricity nearby <p>Cody Kice, agent (660) 341-5862 \$1,747,500</p>	<p>80 +/- Acres/ Sullivan, Adair, Linn County Lines</p> <ul style="list-style-type: none"> -sets right on the Adair, Linn, and Sullivan line -77 +/- tillable crop acres -3.3% return on investment <p>Abbott Shoop, agent (573) 821-5472 \$600,000</p>
<p>440 +/- SCOTLAND COUNTY</p> <ul style="list-style-type: none"> -400 +/- Acres Highly Tillable -High Yielding Crops -12.5 Acre Lake -Terraced & Tiled <p>Andy Boyer, agent, 636-295-1476 \$4,378,000</p>	<p>360 +/- ACRES MACON COUNTY</p> <ul style="list-style-type: none"> -excellent development opportunity. -313 +/- acres highly tillable crop land -Great recreation opportunity <p>Andy Boyer, agent, 636-295-1476 CONTACT FOR PRICE</p>
<p>60 +/- ACRES MERCER COUNTY</p> <ul style="list-style-type: none"> -CRP for the last 10 years -51.4 Acres out of CRP in 2022 -QDM Area -Building Site <p>Andy Boyer, agent, 636-295-1476. \$338,000</p>	<p>86 +/- Acres Linn County</p> <ul style="list-style-type: none"> -Known for its management practices -77 +/- Acres highly tillable bottom ground -consistently raised good crops <p>Andy Boyer, agent, 636-295-1476 CONTACT FOR PRICE</p>
<p>275 +/- Acres Linn County</p> <ul style="list-style-type: none"> -230 +/- Acres Tillable -Excellent hunting and income -big crop producer -Very Secluded <p>Andy Boyer, agent, 636-295-1476 CONTACT FOR PRICE</p>	<p>186 +/- Acres Sullivan County</p> <ul style="list-style-type: none"> -Highly productive farm land with abundant Wildlife -156 +/- Acres Highly Tillable Bottoms -Easy to hunt multiple winds <p>Abbott Shoop, agent (573) 821-5472 CONTACT FOR PRICE</p>

COLTON'S
Steak House & Grill
We Know What's At Steak!

1116 Country Club Drive • Kirksville, MO
660-665-6336 • ColtonsSteakhouse.com

MISSOURI FARM BUREAU INSURANCE

Chris Clark,
Licensed Sales Associate
Email: chris.clark@mofb.com
Website: www.mofbinsurance.com

AUTO HOME LIFE

Clark Agency: 115 W. Potter, Kirksville, MO • (660) 665-1956

CONNECTIONS BANK

2817 N Baltimore St
Kirksville, MO 63501
660-665-7703

ConnectionsBank.com

THINKING OF SELLING?

Heritage House Realty, Inc.

CALL US TODAY!
660-665-5638

KirksvilleRealEstate.com

LOVEGREEN
GOLOVEGREEN.COM

FARM & RANCH.

ELIZABETH GREGORY
660.621.2136

missourihomeandfarm.com

CENTURY21 Lifetime Realty
1605 Baltimore, Suite A
Kirksville
660.665.5678

JK

Tire & Auto Owners:
Joe Dimmitt & Kelly O'Haver
1102 N Green St
Kirksville, MO
660.665.9017

WIN	KIRKSVILLE, HS	LOSS	WIN	KNOX COUNTY, HS	LOSS
6		5	3		8
40	KIRKSVILLE	9/2	CHILlicothe	14	50
0	KIRKSVILLE	9/9	SAVANNAH	29	12
14	MOBERLY	9/16	KIRKSVILLE	34	38
17	MARSHALL	9/23	KIRKSVILLE	41	20
25	KIRKSVILLE	9/30	HANNIBAL	45	76
42	MEXICO	10/7	KIRKSVILLE	43	66
42	KIRKSVILLE	10/14	FULTON	0	56
68	CAPITAL CITY	10/21	KIRKSVILLE	21	8

Travis~Noe Funeral Home

1008 Potter Avenue, Kirksville, MO
660-665-1300
Neil & Sherry Travis, Brian Noe,
Paulie Schmitz & Brenton Travis

FOOTBALL SCOREBOARD

11 MAN CLASS 4 DISTRICT 5 TOURNAMENT			8 MAN CLASS 1 DISTRICT 2 TOURNAMENT		
0	WINFIELD/ELSBERRY	10/28	KIRKSVILLE	59	6
43	JEFFERSON CITY	11/4	KIRKSVILLE	21	13

WIN	SCHUYLER CO., HS	LOSS	WIN	MACON, HS	LOSS
4		6	10		1
40	SCHUYLER CO.	9/2	PATTONSBURG	78	0
46	KEYTESVILLE	9/9	SCHUYLER CO.	70	26
74	NORTH SHELBY	9/16	SCHUYLER CO.	30	14
84	KANSAS CITY EAST CHRISTIAN	9/23	SCHUYLER CO.	26	45
28	SCHUYLER CO.	9/30	BRAYMER	84	53
22	SCHUYLER CO.	10/7	KING CITY	68	26
58	SCHUYLER CO.	10/14	NORTHLAND CHRISTIAN	8	32
0	NORTHWEST	10/21	SCHUYLER CO.	68	20

FOOTBALL SCOREBOARD

8 MAN CLASS 1 DISTRICT 2 TOURNAMENT			11 MAN CLASS 2 DISTRICT 8 TOURNAMENT		
24	SANTA FE	11/4	SCHUYLER CO.	44	35
N/A	ST. PAUL LUTHERAN	11/11	SCHUYLER CO.	N/A	18

GREASE LIGHTNING
TEN MINUTE OIL CHANGE
1215 N Green St
Kirksville, MO
660-665-6068

DAVIS-PLAYLE-HUDSON-RIMER FUNERAL HOME & CREMATORY

2100 E. Shepherd Ave
Kirksville, MO 63501
660-665-2233
www.davisplaylehudsonrimer.com

ANEW Realty Group, LLC

Kim Keyes, Broker/Owner
660.665.3277

AnewRealtyGroupLLC.com
511 S. Baltimore St., Suite 8
Kirksville, MO 63501

NM SB NORTHEAST MISSOURI STATE BANK

Kirksville Branch: 600 S Baltimore, Kirksville, MO 660-665-6161
La Plata Branch: 139 S Gex Street, La Plata, MO 660-332-4317

northeastmissouristatebank.com

Century 21 Lifetime Realty

1605 S Baltimore St, Suite A
Kirksville, MO 63501
660-665-5678
www.C21Kirksville.com

SHELTER INSURANCE AUTO • HOME • LIFE

Shayne Thomas
1515 Green St.
Kirksville, MO 63501
660-665-4685 (Call or Text)
ShayneThomas@ShelterInsurance.com

KIRKSVILLE MOTOR COMPANY

Sales (660) 956-0212
Service (660) 956-0809
Parts (660) 665-1936

kirksvillemotorcompany.com

3607 N. Baltimore Street Kirksville MO 63501-5128 US

MISSOURI FARM BUREAU INSURANCE

SAWYER INSURANCE AGENCY
chad.sawyer@mofb.com
1204 S Baltimore St, Kirksville | Office: 660-956-4550

AMMO PLANET
 200 W. POTTER AVE • KIRKSVILLE, MO • 660-956-4654 • 660-349-0070
 AMMO-PLANET.COM • HOURS: MON & TUE 10-5 • WED-FRI 10-6 • SAT 10-3

P10S 9mm P10F 9mm
\$549 \$499
 after mail in rebate after mail in rebate

Black Rain Ordnance Spec-15, 5.56
SALE \$899
Heritage Mfg. Rough Rider,
\$135
 22LR & 22WMR after mail in rebate

Palmetto State Armory
PSA 5.7 Rock
 5.7 x 28mm Has 2-23rd magazines
\$499

Black Rain Ordnance BRO-A2, 5.56
~~\$799~~ **\$599**
 EARLY BLACK FRIDAY SPECIAL

Rossi RS22, 22LR
\$125
 after mail in rebate

Heritage Mfg. Rough Rider, 22LR
 As low as **\$99**
 after mail in rebate

PMC, 223 55 gr. FMJ
 500 rds **\$250** 1000 rds **\$475**

Fiocchi, 9mm 115gr FMJ
 500 rds **\$173** 1000 rds **\$332**

Taurus, G3C 9mm
~~\$239~~ **\$214**
 after mail in rebate

Smith & Wesson EZShield
 9MM | 380ACP | 30 Super Carry
Starting At \$370

MAPLES REPERTORY THEATRE
TIS The Season: A Maples Rep Holiday Celebration
 Nov. 30-Dec. 11, 2022

2022 Season is OPEN NOW!
 Adult: \$33 Student: \$22 Group Rate: (12+): \$28
 Season Ticket: \$162 You Pick Four: \$120
 Professional Theatre in Upstate Missouri
 102 N. Rubey St., Macon, Mo 63552
 Phone # 660-385-2924 • maplesrep.com

2023 Season Tickets
 Big River June 14th-July 9th
 Driving Miss Daisy June 23rd-July 22nd
 Mamma Mia! July 19th-August 6th
 Church Basement Ladies September 27th-October 5th
 Barefoot in the Park November 3rd-12th
 Sorry! Wrong Chimney! November 29th-December 10th

Have items to sell? Have too much stuff? Let us help you get the most for it!
 Call 660-665-8500.

The Ultimate Wood Heat.

CLASSIC EDGE
 TITANIUM HD SERIES
 Outdoor Wood Furnace
 • More Comfort - Thermostatically controlled wood heat.
 • Peace of Mind - Keep the fire outside and eliminate the dangers associated with indoor wood heating.
 • Save Money - Wood is a renewable, inexpensive and often free energy source.
CAMPEN
 Heating & Air Conditioning
 573-288-8966
 Canton, MO
 CentralBoiler.com

Equipment & Supplies
 Bumper hitch livestock trailer, perfect condition; Dart gun for cattle Pnuet Dart Inc. Model 178B Benjamin Sheridan Dart, just like new 660-676-9199
 Livestock trailer, 1986 Kiefer 20 foot gooseneck, needs some work, title, \$500. 660-689-3005.

Equipment & Supplies
 MC Farland RD 4030 30' vertical tillage, reel harrow rolling basket; GP 1500 drill with center point. 217-658-4761.
 WANTED TO BUY: Farm Machinery and Estates. Call James L. Johnston. 573-473-4904

Hay/Feed/Seed
 Alfalfa grass big square bales for sale. 660-216-1114, located in Edina MO
 Wanted to buy: low quality hay of cornstalks. Will buy a lot, also will rent cornstalks or pasture. 660-988-0685.

Hay/Feed/Seed
 Seed wheat, 20 cents per pound, 50 pounds for \$10.00. Phone 660-216-3174, 70 bags.
Livestock
 Golden Duckwing Phoenix Bantams, 12 weeks old, \$15 each. 660-216-0941

Livestock
 18 month old polled Hereford bulls, \$2,200.00. Circle C Herefords, Powersville, MO. 660-216-3465.
 3 Dorper Katahdin, 2 ewes, 1 and 4 years; 1 ram, 2 years. Ewes exposed for spring lambs. \$500/all/offer. 660-689-3005.

JAGUAR LUMBER
Attn: Land Owners
 Buyer of Timber
 *All species also Select yard Trees/Logs over 40" diameter, *Trees are selectively cut to insure optimal Forest Regeneration.
 Certified & Bonded | Lavon Gingerich 641-664-2080

Show Me Plumbing Services

 • General Mini Excavation & Skid Steer Work
 • Livestock Watering
 • Waterlines & Sewer Systems
 • Residential Services & General Plumbing
 • Utility Trenching
 Stan Schrock 660-988-1163
 Greentop, MO 660-766-2636

MERCHANDISE
Antiques & Collectibles
 Wheat cents, currency, ancient Roman coin, six arrowheads from Sahara Desert, Military items, civil war and up. 660-332-7840.
NEMOTRADER.NET

Sauder's Custom Painting, LLC

 • Tractors
 • Farm Equipment
 • Trailers and MORE!
Jason Sauder
 660-734-9032
 20584 Clark Dr.
 Dr. Linneus, MO 64653

AUTO'S UNLIMITED
 660-665-8149 | 660-341-0965
 No Sunday Calls! | 17406 Bob Rd • Kirksville, MO
FEATURED VEHICLES
 2008 Ford Escape XLT 3.0 Liter, V-6, Flex Fuel, Sunroof, sat. Radio. GREAT 1st Vehicle
 Trailer 16 ft with 2 ft dovetail Electric Brakes, 12,000 lb. Capacity. Excellent condition. **\$3,500**
 2012 Ford Fusion SE, 128,000 Miles, Excellent Condition. Great Gas Mileage!!
 ALL VEHICLES HAVE GONE THROUGH A 60 PT INSPECTION! STATE INSPECTED! CALL FOR MORE INFO!

fb farmbank
Fall CD Special
 12 Month CD 3.00% 3.03% APY*
 36 Month CD 3.60% 3.65% APY*
 *Minimum \$10,000 deposit to open. Limited time offer. Annual Percentage Yield calculated with quarterly interest compounded if you elect not to have your interest compounded, this will reduce your rate of return. Penalty for early withdrawals. Public Funds are not eligible for this rate special.
 1 S. Lincoln St. 701 N. Pearl St. 3311 N. Baltimore
 Green City, MO 63545 Milan, MO 63556 Kirksville, MO 63501
 660-951-8430 660-951-8432 660-951-8431
www.farmbank.com **FDIC**

Beilstein CAMPER SALES
CALL US NOW for the best prices...
 28248 327th Ave.
 LaGrange, MO • Hwy 61 South,
 4 Miles South of LaGrange, MO
573-655-2254
HAPPY VETERANS DAY

#C19535
 2016 Jayco Greyhawk 31DS
 2 Slide-Outs, Only 12,XXX Miles, Call For Best Price
Call for best price

#011316
 2022 Salem FSX MAX 270RTK
 New Platinum TOY HAULER, Private Front Bed Room, Loaded
\$28,495

#108565
 2022 Keystone Springdale 293RK
 New Super Slide-Out, Rear Kitchen, Great For Couples
\$34,495

#109947
 2022 Keystone Springdale Single Axle 1760BH
 New Dinette Slide-Out, Bunks, Easy To Tow
\$19,995

#036565
 2017 Cherokee Grey Wolf 26DBH
 Double Over Double Bunks, Private Front Queen Bedroom
\$22,995

#057933
 2022 Doolittle Trailer Mf Cargo 7X14
 New, Ramp Gate and Side Entry Door
\$9,895

Beilstein Camper Sales
www.beilsteincampersales.com
 Since 1956, family owned Beilstein Camper Sales has provided exceptional value and service to our customers. We feature a wide selection of new RVs from Forest River, Heartland and Keystone. We're on the Avenue of the Saints along side Highway 61, four miles south of La Grange, Missouri. Stop by today to get a great deal!

TIMBER MANAGEMENT.
 Purchasing Walnut, Oak, Maple & Other Species
WE PAY BEFORE WE CUT
BONDED & INSURED Est. 1968
641-895-8209

Miller's Spray Foam
DANIEL MILLER
 21743 Lost Branch Way
 Brashear, MO 63533
 We Strive to Satisfy 660-234-2808

FOR SALE
Our Fall Registered Angus Bulls
 We are Selling picks at the Farm!
 Bulls are **BIG, STOUT, SLICK BLACK & Gentle.**
 Most are A.I. with Top EPD's, Weights, and SuperFeet.
 Pedigree & Quality are Second to NONE.
 1st come 1st serve.
 Up to date on vaccinations & Semen Tested.
\$4000 per pick
Terry Little Ranch
 13815 220th Ave
 Monticello, MO 63457
 Terry (573)470-0846
 Marilyn (573)470-0847

YODER'S

PROCESSING
 SCHEDULE YOURS TODAY
660-486-3221
 (Closed Sundays)
NEW FACILITY!
10+ Years Experience

Beef & Pork processing available **NOW!!**

PORK • DEER • BEEF
QUALITY CUT PLUS

- Patties
- Cure & Smoke
- Vacuum Seal
- Summer Sausage
- CWD Checking. (NOT available opening rifle day)
- Snack Sticks
- Jerky
- Fast Turnaround on Deer

13736 Beechnut Street, Ethel, MO 63539 | Don't have your own Animal to Process, No Problem, Call Us!

Judd Motors Call 660-457-3700
 Hwy 63 North, Lancaster, MO

1985 GMC 7000 dump truck, single axle, 366 engine, 5+2 trans, disk brakes, 11 ft steel bed, 3 stage single hoist, runs great only. **\$8,995**

Bushog SQ184 7 ft brushhog, rslip clutch, 3 pt, 540 PTO, lam wheel, only **\$2,500**

Bushog RDTH84 7 ft finish mower, rear discharge, 3 pt, 4 wheels, only **\$2,500**

2011 Chevy Suburban, LTZ, 4WD, sunroof, DVD, leather, black, 141K miles, quad seats, **\$16,250**

2007 Ford Freestyle Limited, AWD, leather, sunroof, 3 row seating, 220K, black, drives great, only. **\$3,495**

IH 574 tractor, gas, 68 hp, 3 pt, 540 PTO, rear remotes, wide front, new paint, runs good, only **\$5,995**

2013 GMC Sierra 1500, SLT, crew cab, leather, 4WD, red, 140K miles, excellent, **\$19,900**

2005 GMC 1500, ext cab, 4wd, V8, 168k, silver, only **\$8,250**

2011 Jeep Grand Cherokee, Laredo, 4wd, V6, leather, sunroof, dark blue, only 111k, **\$13,900**

Cumberland Building Dealer

www.juddmotors.com | In Business Over 75 Years
 Curly and Kevin Judd

VICTORY
Metals & Recycling
 Kirksville, MO 660-665-8000
victorymetalrecycling.com
 For current scrap prices call or visit our **Facebook Page**

★ **Construction/ Debris Recycling**

Visit Kirksville's construction & debris recycling facility and save trips to the landfill! Take advantage of this service for solid waste removal by bringing your landfill items to Victory Metals C & D recycling facility located at 3602 N. Industrial Rd.

★ **Roll-Off Container Service**

10-20-30-40 Cubic Yard Dumpsters

3602 N. Industrial Rd., Kirksville, MO 63501
 djanesvmr@gmail.com
www.victorymetalrecycling.com

Need Your SPACE?
 Declutter With
The Classifieds!

See how good it feels to rehome the stuff you're not using, and generate some extra income in the process!

Furniture, Electronics, Real Estate, Autos, Appliances, Handbags, Jewelry, Sporting Goods, Baby Gear, Bicycles, Tools & More!

Furniture

Bassett King size bed and large dresser with mirror, smoke and pet free, moving and can't take, \$550. 217-257-1385

Texas Ranch style table and bar stools. Wagon wheel coffee table. Custom camo bench seat. Dell computer. All very nice condition. 641-208-7353.

Miscellaneous

1971 Chevy Chevelle, 350 auto, blue inside and out, nice paint, new tires, Cragar wheels, cruise control, \$31,500. 573-248-6111

Billboard tarps, assorted sizes, mostly 14x48's, \$35.00 each. Raymond Kauffman, 25624 Hanover St, LaPlata, MO 63549.

Heavy wooden kitchen table, 2 leafs, chairs \$75; China hutch \$50; Curio lighted cabinet \$45; Vintage chest of drawers \$50; Lane Cedar chest early 50's model; lamps; futon; desk utility cart all \$10 each, much more. Kahoka Area 217-257-1385

ANGUS BULLS FOR SALE

Coon Angus Ranch
 Outstanding selection of 14 month old bulls
 1318 Shelby 169, Bethel, MO 63434
 Russell 660-341-2705
 Larry 660-284-6473
 Susan 660-341-5192
 ruscatsol@gmail.com
 www.coonangusranch.com

Band Saw
 New Grizzly 14" Deluxe G0555LX with Mobile Base
 660-234-5016

Motorcycle Trailer
 Pull behind Bike, Like New Aluma Trailer
 660-234-5016

Miscellaneous

2 White storm doors 32" & 36" wide very usable, \$50 each; Kitchen table & 6 barrel style chairs, \$24; antique window wts \$2 each. 217-257-1385

Old Cast Iron and Wood School Desk, \$50; Rough cut Walnut Lumber, 180 Board Foot, \$450; Rocket Wood Stove \$125. 660-342-5757

Texas Ranch style table & bar stools; wagon wheel coffee table; Camo bench seat 26"x72"; hunting blinds; tree stands sale. 641-208-7353

New BB pistol, railroad steam photo's, dvd's, 31 day wall clock, stamp albums and stamps. 660-332-7840.

Seed wheat, 20 cents per pound, 50 pounds for \$10.00. Phone 660-216-3174, 70 bags.

Call us for all your advertising needs. 660-665-8500.

Miscellaneous

Fresh local cooked sorghum, 3 miles West Laplata, 156, 1/2 mile South Iceberg, 1/2 mile West Hanover. Raymond Kaufman.

Vintage Drexel French carved county dresser, glass top & French carved mirror, very fine condition, in storage last 30 years. 641-708-7353

Pets & Supplies

Frenchton puppies, 2 females, 3 males. Ready to go now. 660-874-4964.

Schipperkew puppies, chocolate, black and cream, cheap. First come first picks. Parents on site. Albert Lee, 23493 Giant Place, LaPlata, MO 63549. They're Rat Terrier type.

Please place your classified ads on the NEMO website. Our web address is nemotrader.net

D6C DOZER 74A
\$27,000
 641-895-1702



CELEBRATIONS! PARTY RENTAL
 KIRKSVILLE, MO

FOR RENT

- Tables & Chairs
- Tents • Bounce House
- Cotton Candy Machine & More!

660-626-5162 or 660-665-9380

LIME SPREADING SERVICE

Equipped with variable rate

PEAVLER TRUCKING LLC
 Alan Peavler, 660-216-0618 - Jared Peavler, 660-342-7685



NEMO Trader Classified COUPON

2 Classified Ads for \$5.00

20 cents per word over 20 words

For an additional \$1.00 run in the Kirksville Daily Express one time.
 For an additional \$2.00 run in the Saturday Kirksville Daily Express and Kirksville Crier one time each.
 Must be Mailed in or brought in along with payment
Picture Ads Not Included with Coupon!

Choose Classification

<input type="checkbox"/> Agri-Business	<input type="checkbox"/> Real Estate	<input type="checkbox"/> Transportation
<input type="checkbox"/> Announcements	<input type="checkbox"/> Rentals	<input type="checkbox"/> Yard Sales
<input type="checkbox"/> Employment	<input type="checkbox"/> Real Estate Sales	<input type="checkbox"/> Auctions & Estate Sales
<input type="checkbox"/> Financial	<input type="checkbox"/> Recreation	
<input type="checkbox"/> Merchandise	<input type="checkbox"/> Services	

Ad No. 1 Each Box Represents a Word (20 words or less)

Ad No. 2 Each Box Represents a Word (20 words or less)

Name _____

Mailing Address _____

Phone Number * _____
 this is required*

PO Box 809 Kirksville, MO 63501 • 660-665-8500

Sports Equipment

Local dealer for Lazyman fiberglass deer blinds. Pricing starting at \$1,299.00. Several models to choose from Heindselman Family Farms. 660-341-5692.

Hunting equipment sale: Box blinds, bow, ladder, hay bale, hydraulic lift, Obsession Defcon 6 bow, Ten Point Cross bow, rifles. 641-208-7353

Like new Mossberg 835 shotgun Combo, has rifled slug barrel w/sites, gun is tapped for a scope, shoots 3 1/2" shells, Camo color, \$500. 573-588-4518

HAVE A PET OR PUPPIES TO SELL? Call us. You can even pay over the phone. 660-665-8500.

2011 Ford F150
Platinum 5.0 V8, Crew Cab, 120,000 miles,
\$18,500
660-216-4256



REAL ESTATE SALES

Mobile Homes For Sale

USED DOUBLE WIDE \$34,900 WOW!!!! This won't last 573-657-2176 amegamobilehomes.com

USED DOUBLE WIDE \$34,900 WOW!!!! This won't last 573-657-2176 amegamobilehomes.com

WE HAVE MOBILE HOMES Instock new arrivals (8) homes, need to go as soon as possible! 573-499-9993 columbiadiscounthomes.com

TINY HOMES - We gottem 573-881-3283

TRUE MODULARS - 30 to 60 day delivery available, 3 and 4 bedroom. 573-657-7040 chateauhomes.net

RECREATION

Accessories-Recreation

Local dealer for Lazyman fiberglass deer blinds. Pricing starting at \$1,299.00. Several models to choose from Heindselman Family Farms. 660-341-5692.

ATV's

Kawasaki 650 Prairie 4-Wheeler; 2022 Rambo E-Bike new; 2017 Honda Ruckus, 300 miles, savage muzzle loader, Ten Point Cross bow. 641-208-7353

Motorcycles

WANTED TO BUY: Harley Davidson's, any year, any condition, cash money. Days 660-263-1356 or 660-537-0068

Wanted

WANTED TO BUY: Harley Davidson's, any year, any condition, cash money. Days 660-263-1356 or 660-537-0068

SERVICES

Chat/Dirt/Gravel

DIRT WORK All types of excavation, reclaiming overgrown fields, including CRP and WRP. Building site preparation, creating new trails and crossings, Food plot development and maintenance. Leveling and grading, wetland construction and maintenance. Pond and lake cleaning and construction. Call for quotes. 660-342-2701

Lawn/Garden/Landscape

New 3 pt. tillers, heavy duty, gear driven, 7' to 12' starting at \$4,050. 660-874-4455.

TRANSPORTATION

Accessories-Transportation

Pair 18.4x38 Tires mounted on 9 bolt rims, \$350; 1-18.4x38 on DMI Super lock II dual rim, \$75. 217-257-1385

TRANSPORTATION

Accessories-Transportation

Tires: (6) 265-75-R16, tread 15-50%, \$15-\$30; (6) 225-60-R16, tread 25-70%, 2 on Steel Rims fits 03 Impala, \$20-\$50; (1) 215-70-R15 70% tread, \$25. LaPlata 660-342-5757

Automobiles

1971 Chevy Chevelle, 350 auto, blue inside and out, nice paint, new tires, Cragar wheels, cruise control, \$31,500. 573-248-6111

Trucks, 4x4's, SUV's

2015 Chevy Silverado 1500, crew cab WT, 4x4, 5.3L, well equipped, windows, locks, tow, keyless brownstone metallic, 143,000 mile 1 owner, \$18,900. Accelerators since "1974" Kahoka, MO 217-257-1385 or 660-727-3455

Have items to sell? Have too much stuff? Let us help you get the most for it! Call 660-665-8500.

Recycle Your Stuff for Cash in the Classifieds



Call or go online to browse, buy or sell!

\$499 Down

on select vehicles*

When You Bring in 4 New, Unwrapped Toys

Minimum \$10 value for each. Toys will be donated to local Children's Hospitals.

car-mart.com

Keeping You on the Road

*On retail vehicles priced at \$15,999 or less. With approved credit. See dealer for details. This offer cannot be combined with any other promotional offer.
Example: \$499 down, 110 weekly payments of \$10.78 per \$1,000 financed at 16.5% APR. Not all vehicles shown qualify for this promotion.

We Offer:

660-956-4849 • 2015 North Baltimore • Kirksville

- Peace of Mind Package
- Service Contract Plus
- Accident Protection Plan
- 100% Satisfaction
- Pay Your Way
- Low Down Payments
- Quality Used Vehicles
- Flexible Financing
- Hand Selected Vehicles
- Convenient Payment Options
- Start Your Approval Online
- Over 150 Locations
- 40 Years in Business
- We Buy Cars

2015 FORD FUSION FWD, 4 Cyl., Red	2014 CHEVROLET TAHOE RWD, 8 Cyl., White	2014 CHEVROLET SILVERADO 1500 RWD, 6 Cyl., White
2012 FORD ESCAPE FWD, 4 Cyl., Blue	2012 GMC ACADIA AWD, 6 Cyl., Black	2004 CHEVY AVEO FWD, 4 Cyl., Green
2011 JEEP GRAND CHEROKEE 4WD, 6 Cyl., Black	2011 GMC SIERRA 2500 4WD, 8 Cyl., Gray	2014 FORD ESCAPE FWD, 4 Cyl., Blue
2012 FORD FIESTA FWD, 4 Cyl., Gray	2011 FORD EXPLORER FWD, 6 Cyl., Black	2016 HYUNDAI ACCENT FWD, 4 Cyl., Silver
2016 KIA SORENTO FWD, 6 Cyl., Gold	2012 RAM 1500 4WD, 8 Cyl., Black	2013 FORD EDGE FWD, 6 Cyl., Black
2010 CHEVY MALIBU FWD, 4 CYL., BROWN	2020 HYUNDAI ELANTRA FWD, 4 CYL., RED	2012 FORD FUSION FWD, 4 Cyl., Silver

Keeping You on the Road

KYLE JENNINGS
GENERAL MANAGER

ATTENTION LAND OWNERS!

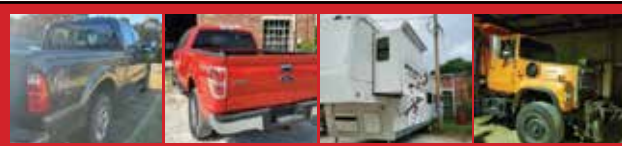
**BUYER OF STANDING TIMBER
OWNER/OPERATOR OF SAWMILL - BUY/CUT LOGS
CERTIFIED - BONDED - INSURED**



TRI STATE TIMBER L.L.C.
PH. 660-341-4921 or 660-465-2975
353 1/2 GRAND AVE. • MEMPHIS, MO 63555

There's a better way to get noticed.

Keep life simple. Take out an ad.



Jacksonville Personal Property Auction

Friday, November 11, 2022 at 10:00 a.m.
Wolfe

Directions: South Elgin Street, Jacksonville, Missouri. From US Highway 63, turn West on State Highway J then North on South Elgin Street to the auction location. Watch for signs the day of the auction.

VEHICLES: 2016 Ford F250 Diesel Gray; VIN Ending in 06904; 2003 Homemade Trailer 20ft; VIN Ending in 09373; 67 12ft Homemade Trailer; and a lot more

EQUIPMENT: Tong IL CNC Machine Mill; Bridgeport 3/phase w/2phase converter Mill; Bridgeport Tool and Die Set; Reid Surface Grinder; and a lot more

HOUSEHOLD ITEMS: Sofas, Chairs, Tables, Dressers, Drawers, Cabinets, Display Cases, Washers, and Dryers; crockpots; hats; cookbooks; toys; kids puzzles and books; fans; Poly Pockets; blankets; propane heater; dishes; recipes; flashlights; dresser; games; cake bowls; Trotman rocking chair; heart shelf; water jug; framed pictures; Kirby vacuum; door with frame; pots and pans; and a lot more

ANTIQUES AND COLLECTIBLES: Coin Collections, Blue Fenton Ware, Glass Ware, Toys, Games, Dolls, and Collectibles-too much to list; Pirates of the Caribbean collectibles; Christmas decor; and a lot more

TOOLS AND OUTDOOR EQUIPMENT: Rotary saw blades; chop saw; drywall hanger; miscellaneous tools; creper; shovels; hammer; chainsaw bar; quick shade canopy; hose reel; nails; bearing puller; paint kit; flour grinder; hand tools; jack stands; circular saw blades; Porter Power; and a lot more

There will be many more items too numerous to mention.
SEE MORE PHOTOS ON SCOTTY'S WEBSITE



573-356-4405
Michael Cunningham 660-651-2288 • Paxton Pittman 660-346-1956
WWW.SCOTTSAUCTIONSERVICE.COM



Semi-Annual Consignment Auction

Saturday, December 3, 2022 at 10:00 a.m.
The late Bob Calef & multiple consignors

We are accepting consignments to be brought to our location after
November 21, 2022

Consign early for the most advertising. Call us at 573-356-4405 today!

Directions: 28251 US Highway 63 North, Macon, Missouri. From US Highway 36 travel approximately 2 miles North of Macon to Scotty's Auction Barn and Event Center on the West side of the road. Watch for signs the day of the sale.

EQUIPMENT: John Deere 7810 MFWA 1,530 hrs, decals, quick hitch, 10 front weights, very nice tractor; John Deere 7800 MFWA 2,514 hrs with duals and quick hitch, 14 front weights, very nice tractor; John Deere 4960 with 4,932 hrs with duals with 12 front weights, sells with quick hitch, very nice tractor; John Deere 4960 shows 4,979 hrs with duals, 20 front weights, partial cab kit, sells with quick hitch; 1989 Ford F800 5 speed, gas engine, air brakes, 16' Obeco bed with shurlock tarp; Maycraft 8'32" unloading auger with electric motor; MORE

There will be many more items at this auction too numerous to mention. We will be running multiple rings so please come prepared!

SEE MORE PHOTOS ON SCOTTY'S WEBSITE



573-356-4405
Michael Cunningham 660-651-2288 • Paxton Pittman 660-346-1956
WWW.SCOTTSAUCTIONSERVICE.COM



Huntsville Land and Farm Equipment Auction

Tuesday, November 29, 2022 at 4:00 p.m.
Donald and Mary Sue Woods

Directions: Auction location - 2311 County Road 1285, Huntsville, Missouri. Follow State Highway C 10.5 miles North of Huntsville then turn East on Country Road 1285 for 1.5 miles to the auction location or follow State Highway C South of Bevier 12.4 miles then turn East on County Road 1285 for 1.5 miles to the auction location. Watch for signs the day of the auction.

REAL ESTATE: This 40 acre m/l tract includes tillable acreage with two terraces, a pond and good hunting. The land is located approximately 1/2 mile from the auction location. See the attached map. The real estate will sell promptly at 5:00 p.m. Please call Scotty at 573-356-4405 for more information and to schedule your personal showing.

DOWN PAYMENT: 10% of the contract purchase price will be due upon acceptance of the Sales Contract. Personal or Cashier's Checks will be accepted. This is "AS IS, WHERE IS" and is non-refundable. CLOSING: Closing shall be within 30 days of the auction date.

FARM EQUIPMENT: buggy; iron wheel rake; homemade transport wagon; New Holland mower conditioner; one row mounted John Deere corn picker; Allis Chalmers 1 row pull type picker; Vermeer 605A round baler; Vermeer 625C round baler; Massey Harris 44 narrow front end, sold with new clutch; side delivery rake; John Deere tripp loader; homemade iron gates; John Deere cultivator with harrow; one bottom walking plow; John Deere sickle mower; garden cultivator; John Deere 10 disc; post hole digger; John Deere PTO driven manure spreader; wagon running gear.

There will be other items too numerous to mention.

SEE MORE PHOTOS ON SCOTTY'S WEBSITE



573-356-4405
Michael Cunningham 660-651-2288 • Paxton Pittman 660-346-1956
WWW.SCOTTSAUCTIONSERVICE.COM

SHELBY COUNTY, MISSOURI REAL ESTATE

AUCTION

THURSDAY, DECEMBER 8TH • 5:30PM

This farm is 103.4 acres (surveyed acres) with approximately 66.7 FSA tillable acres and 11.99 FSA acres currently enrolled in CRP. The current CRP contract is paying \$1,861 annually and is set to expire 9-30-2026.

With life taking her in a different direction, Deborah Teeples has decided to offer the rest of her farm for sale. Peoples Land Co, LLC is honored to bring you for sale at public auction a phenomenal tillable, CRP, and hunting tract in a great location. The sale will be held at the American Legion Hall in Shelby, MO on December 8, 2022 at 5:30 p.m. This farm is located approximately 4 miles Northeast of Shelbyville, MO on Shelby County Road 255. The farm is approximately 77% tillable with county road frontage and offers great income with outstanding hunting as well. This is an opportunity to own a Shelby County tract that has been in the same family for 35 years and is great tillable, productive soils, great access, and has been cared for at the highest level. The current tenants have farmed this land for many years and have cared for it as if it were their own. This is a once in a lifetime opportunity as land in this area does not come up for sale often.



AUCTION LOCATION: The American Legion Hall in Shelby, MO 63468

Contact: Jay Scott Gander
660.676.1479

www.peopleslandco.com

**103.4[±]
ACRES**

Offered in
1 Tract

- 66.7 FSA tillable acres
- 11.99 CRP acres

Attention Farmers & Investors!



Kirksville Real Estate Auction

Thursday, November 17, 2022 at 5:00 p.m.

Directions: 617 & 619 Meadow Crest Drive, Kirksville, Missouri. From Business Highway 63 (North Baltimore Street) follow Northtown Road East for 0.3 miles, turn South on North New Street, then West on Meadow Crest Drive to the auction location. Watch for signs the day of the auction.

Real Estate: This multi-level duplex consists of a three bedroom, 1 1/2 bath unit with a laundry room, one car garage, electric furnace and central air conditioning. The second unit has three bedrooms, 2 1/2 baths, two car garage, electric heat, central air and a gas fireplace. Both units have newer laminate flooring and carpet.

DOWN PAYMENT: 10% of the contract purchase price will be due upon acceptance of the Sales Contract. Personal or Cashier's Checks will be accepted. This is "AS IS, WHERE IS" and is non-refundable. CLOSING: Closing shall be within 30 days of the auction date.

Conveniently located to shopping and other businesses, this is a great investment opportunity. The apartments stay very clean and well-maintained. There are current tenants occupying both units. They are great tenants and pay on time. These have been great properties for the current owner but as life changes, they need to get them sold.

For your personal showing, contact Scotty's Auction Service at 573-356-4405.

SEE MORE PHOTOS ON SCOTTY'S WEBSITE



573-356-4405
Michael Cunningham 660-651-2288 • Paxton Pittman 660-346-1956
WWW.SCOTTSAUCTIONSERVICE.COM



A FAMILY OWNED BUSINESS SINCE 1979



Headquartered in Hamilton, Illinois, Sullivan Auctioneers, LLC is one of the largest Real Estate and Farm Machinery Auctioneers in the nation.

For more than 40 years we have been conducting professional auctions. We connect our sellers with thousands of interested buyers around the world.

Considering an Auction?

CALL OR EMAIL TODAY FOR A NO OBLIGATION CONSULTATION!

Toll Free (844) 847-2161 | Sold@SullivanAuctioneers.com
www.SullivanAuctioneers.com | Lic. #444000107



Macon Real Estate & Personal Property Auction

Tuesday, November 22, 2022 at 1:00 p.m.
The estate of James Stewart

Directions: 802 West Bourke Street, Macon, Missouri. From US Highway 63 in Macon, turn West on Vine Street, then turn North on North Rutherford Street then West on East Bourke Street for 0.6 miles to the auction location. Watch for signs the day of the sale.

REAL ESTATE: This 2 bedroom, 2 bath ranch style home with a full unfinished basement features a covered deck, a partially fenced backyard and hardwood flooring. The home has central air, electric heat and a large kitchen with a lot of cabinets.

DOWN PAYMENT: 10% of the contract purchase price will be due upon acceptance of the Sales Contract. Personal or Cashier's Checks will be accepted. This is "AS IS, WHERE IS" and is non-refundable. CLOSING: Closing shall be within 30 days of the auction date.

Real Estate will sell promptly at 3:00 p.m. If you would like to schedule your personal showing, please contact Scotty at 573-356-4405.

HOUSEHOLD FURNISHINGS: Electric reclining sofa; brown upholstered chair; Samsung flat screen television; battery operated Bentley Grandmother clock; oil on canvas; MORE.

ANTIQUES & COLLECTIBLES: antique ice tongs; reproduction white clad icebox; various enamel ware; retro style table and 3 bar stools; vintage women's boots; various crocks; antique Coca-Cola trays; sink pump; vintage snagging rig.

COINS: 1942 Walking Liberty half dollar; 1941 mercury dime; 1916 mercury dime; 1945 mercury dime; 1941 mercury dime; several mercury dimes; several Kennedy half dollars; Presidential and buffalo nickels; \$1 silver certificate; \$2 bills; Betsy Ross \$1 coin; SEVERAL MORE

TOOLS AND OUTDOOR EQUIPMENT: 16 speed floor type drill press; Craftsman 12 inch ban saw; Craftsman 10" radial arm saw; Craftsman portable air compressor; Craftsman 12" table saw; Troybilt Pony rear tire tiller; various hand tools; metal glider rocker; Char grill BBQ grill; SEVERAL MORE

FIREARMS: Winchester Ranger 12 gauge; Marlin model 806 22 caliber; Western Field 22 caliber; Red Rider BB gun; Winchester Model 62a 22 caliber; Henry 22 cal; Heritage Rough Rider 22 revolver with extra cylinder

There will be many more items too numerous to mention.

SEE MORE PHOTOS ON SCOTTY'S WEBSITE



573-356-4405
Michael Cunningham 660-651-2288 • Paxton Pittman 660-346-1956
WWW.SCOTTSAUCTIONSERVICE.COM

KNOX COUNTY REAL ESTATE AUCTION

AUCTION

FRIDAY, DECEMBER 2ND AT 6PM

The Jeff and Leah Otto trust auction will be held at the Knox County Community Center, in Edina. This auction represents a great balance of outstanding tillable acreage, along with some very well-maintained pasture. The farms are located just southwest of Novelty, Missouri in Knox County.

Tract 1 is 157.3 surveyed acres of some of the best tillable land in Northeast Missouri. A road on two sides, terraced and very well maintained. FSA figures indicate 145.06 open acres.

Tract 2 is 120.1 surveyed acres of pasture with wooded draws. The pasture is very well maintained with Black Creek through the property. This property would make not only an outstanding livestock farm, but a great hunting farm with opportunities for large food plots and habitat.

Tract 3 is 154.9 surveyed acres that offers a great combination of tillable and pasture for the investor and farmer that raises both grain and livestock. FSA acres indicate 81.12 open acres.

These tracts will be offered at the Buyers Choice Method with online bidding available on ProxiBid. Title Work will be done by American Title in Macon. Closing will be held on or before January 10th in Macon, Missouri. This farm will sell free and clear for the 2023 crop year.

AUCTION LOCATION: Knox Community Center, 207 N 4th St, Edina, MO 63537



Contact: Anthony Peoples
660.651.6501

www.peopleslandco.com

**432[±]
ACRES**

Offered in
3 Tracts

- Outstanding Tillable Acreage
- Pasture Land
- Recreational Land

Attention Farmers & Investors!



NOTICE:
Playground Equipment for Sale

On November 12, 2022 at 10:00am in Jaycee Park, 514 E Davis St., Lancaster, MO 63548 on Route D, the City of Lancaster will be auctioning 7 pieces of playground equipment/structures. All items must be removed by purchaser no later than November 30, 2022. Prior to removing any item contact city hall or a city employee. To view pictures of the items please go to lancastermo.com/public-notices. All money made from this sale will go towards the current Jaycee Park Improvement Project.

All sales are final and equipment/play structures are being sold "as is" The City reserves the right to reject any and/or all bids. If you have any questions or need further assistance, contact
City Hall 660/457-3022.

Call us for all your advertising needs. **660-665-8500.**

Call about our classified ad specials. **660-665-8500.**

Save Save Save Save Save Save Save Save Save Save Save Save Save Save Save Save

SAURDAY NOVEMBER 12, 2022 10:00 AM

1916 S. 18TH ST. (HWY 5 S) CENTERVILLE, IOWA

ANTIQUES/COLLECTIBLES: 20+ Pieces of Nice Carnival Glass; 3 Sleepy Eye Pitchers; Pyrex; Set of 4 Jadite Bowls; Fireking; Set of Refrigerator Dishes; Shirley Temple Pitcher; Fenton; 1960's Toys-Fire Truck, Car Hauler, Roadster, JD Tractor & Implements; Doll House Furniture; 261= 1960's & Up, Ironman Magazines; 77=1968 & up, Gas Engine Magazines; 148=1970 & up, Engineers & Engines Magazines; Croquet Set; Old Lufkin Tape Measure; 3 Sets of Old Doors; 1890's Mail Box; Falls City Deer Sign; Nice Pictures; Books; Doll Collection; Bell Collection; Owl Collection; Cook Book Collection; Burlap Sacks/Adv; Hawkeye Mugs; Pitcher/Bowl; Sets of China/ Dishes; Primitives; Kitchen Items; 4 Victorian Chairs; 2 Marble Top Stands; 20 Nice Modern 3' to 5' Church Pews; Chairs; Wedding or Church Candelabrum; Trunk; Holiday Decorations; Library Table; School Bell; Sewing Machine; White Mountain Ice Cream Freezer; Wine Chiller; Pr of Steel Wheels; Costume Jewelry; + many more Collectables.

FURNITURE, MISC., VAN: Chest of Drawers; Dressers; Air Conditioner; Dinette Set; End Tables; Small flat screen TV; Boat Motor; Harley Davidson Items including 2 used Jackets; Book Shelf; Glass Door Cabinet; Sofa; 2 Pc Sectional w/ 2 Recliners; Dishwasher; Abcircle Machine; Europro Steam Press; Brown Recliner; Football Table; 2 Trailers of Misc (many surprises); 2001 3500 Chev. Express 15 Passenger Van/ With Cargo Box; SPEND THE DAY WITH US! MANY ITEMS NOT LISTED.

PICTURES ON WEBSITE:
demryauction.com OR Facebook

DEMRY AUCTION, LLC
1916 S 18th St, (Hwy 5 SOUTH) CENTERVILLE, IOWA

Tom Demry: 641-895-2508
Janet Demry: 641-895-4310 641-856-6408
Kristy Demry: 641-895-2509

Junior Lawson: 641-895-0037 Randy Mulay: 641-436-1521

LIVINGSTON COUNTY, MO

LAND AUCTION

TIMED ONLINE • NO-RESERVE

BIDDING CLOSURES: THURS., NOVEMBER 10TH STARTING AT 11:00 AM

70.8 ACRES ±
Selling in 3 TRACTS

EXCELLENT NORTHERN MISSOURI HUNTING ACREAGE!

The McClain property is located approximately 4 miles north-east of Breckenridge, MO or 4 miles northwest of Mooresville, MO in Section 6 T57N-R25W of Mooresville Township, Livingston County, MO. From Hwy 36 and LIV 401 (NE Litton Rd.) junction, travel north on LIV 401 (NE Litton Rd.) for 3 miles to farm.

Take a look at this upcoming Livingston County, Missouri land auction. The tracts are set up for the ultimate deer hunting enthusiast or just a weekend warrior looking for a camping getaway. Tracts also offer multiple building sites with utilities near by. There are multiple small clearings and a couple of large clearings that would be perfect for planting food plots. With many of the neighboring farms in row crop production, this property offers bedding, dense cover, water sources, and acorn-producing oaks, creating an ideal environment for holding a high number of deer. A wet weather creek works its way through the timber and a small pond can be found on tract 1. Don't miss out on the opportunity to own a nice recreation farm within a short commute from the city! For more information or inspection of property, contact auction firm at (660) 963-2461.

ADDITIONAL DETAILS, MAPS & PHOTOS ONLINE AT:
www.teterauction.com

McCLAIN FAMILY - SELLER

TETER AUCTION COMPANY, LLC
(660) 963-2461
AUCTIONEERS:
Josh Teter, David May, Tyler Keenan

CONSIDERING AN AUCTION?

NOW BOOKING WINTER/SPRING 2023 AUCTIONS

TETER AUCTION COMPANY

CONTACT US TODAY!
(660) 963-2461 | WWW.TETERAUCTION.COM

RAMER TRUCK SALES





2017 Ford F350 XL
6.2L, 65K Miles.
\$36,500

2020 Ford F350 STX
7.3L, 30K Miles.
\$45,900

2013 Ford E-350
15 passenger white 5.4L 73k miles

Gorin, Missouri • Monday-Saturday 8am-6pm
www.ramertrucksales.com | HOME: 660.282.1002
CELL: 660.341.6140 | "NO SUNDAY CALLS!"

Deweze

WE'VE GOT YOUR DREAM JOB ON

A SILVER PLATTER

Keep up-to-date with dozens of top local job postings. Find a great permanent or temporary position in the classifieds!

TIMED ONLINE | NO-RESERVE

FARM ESTATE AUCTION

BIDDING CLOSURES: MON., NOV. 21, 2022 STARTING AT 10:00 AM^{CT}

PHYSICAL ADDRESS: 17098 FAWN AVE., DRAKESVILLE, IA

INSPECTION DATE: FRI., NOV. 18TH • 10:00 AM - 3:00 PM

HIGHLIGHTS: '07 JD 7420 MFWD tractor, 5,018 hrs.; '06 New Holland TG305 MFWD tractor, 5,541 hrs.; '80 Case 2090 2wd tractor, JD 3020 2wd tractor, showing 5,359 hrs.; Ford 5000 2wd tractor; Cat D6C dozer, 2,465 hrs.; '14 Ford F-150 4wd pickup, 61,800 mi.; '18 JD XUV 835M Gator, 2,318 mi., 393 hrs.; '04 Cougar by Keystone 30' 5th wheel camper; Kelly Ryan 2W04 "Big Bagger" silage bagger; Hesston 1340T 12' moco; Vermeer R2300 twin rake; Meyers 2400 manure spreader; JD 3960 forage harvester; JD FH25 1 row 3-pt. forage harvester; New Holland 352 grinder mixer; (2) Cox Feed King 2-ton creep feeders; Thompson & Gill 73L portable cattle hoof trimming chute; Paul Livestock Scale 305 portable livestock scale; 4 bale hay trailer; Kewanee 500 45' hay/grain elevator; JD 68AW (3) compartment auger wagon; Grain-O-Vator 10 auger wagon; Shaver 8 front mount hyd. post driver; Hesston 1340 12' moco; '12 JD HX15 15' batwing mower; JD MX7 7' 3-pt. rotary mower; Friesen 110 single compartment seed tender; AC 108 10 yard dirt scraper; Turbo Saw hyd. tree saw; Tote 5 ton SS fertilizer spreader; (2) EZ Flow 225 bu. gravity wagons on JD 953 gear; '81 Kenworth W900 day cab semi; '75 International 1700 Loadstar single axle truck; '03 Wilson DWBT650 42' belt trailer; '06 WW 7' x 24' alum. livestock trailer; '53 Transport 30' low boy trailer; Chaparral 6' x 14' livestock trailer; JD 235 18' disc; Krause 18' disc; International 37 10' disc; Remington Delta 28' pasture harrow; Brillion 10' culti-mulcher; Ford 26' field cultivator; JD 14' 3-pt. rotary hoe; IH, MF & AC 5 bottom semi mount plows; Also selling farm support items.

JACK HENDERSON ESTATE
EQUIPMENT QUESTIONS: MARK HENDERSON (641) 777-6056 & DAVID HENDERSON (641) 799-3857

Auction Manager: John Probasco (641) 856-7355

SULLIVAN AUCTIONEERS, LLC
(844) 847-2161
www.SullivanAuctioneers.com
License #444000107

VIRTUAL ONLINE

CLARK COUNTY, MISSOURI

LAND AUCTION

Thursday, December 1, 2022 at 11:00 AM

125.7 SURVEYED ACRES • 2 TRACTS

The farm is located approximately 3 miles southwest of Kahoka, MO or approximately 24 miles east of Memphis, MO in Section 3b, 165N*8W, Lincoln Township, Clark County, MO.

Farm represents productive tillable cropland, prime Northern Missouri Whitetail Deer & Wild Turkey hunting acreage, as well as ideal rural building sites!

✓ PRODUCTIVE TILLABLE CROPLAND!
✓ PRIME RURAL BUILDING SITES!
✓ EXCELLENT HUNTING/RECREATIONAL ACREAGE!

The Estate of Dennis W. Moldenhauer

Representing Attorney: David Rouner | Rouner Law Office LLC
400 N. Franklin Street | Kirksville, MO 63501 | (660) 665-8324

Closing & Title Work: Oak Hills Title Co.
307 Lewis Street | Canton, MO 63435 | (573) 288 4461

Auction Managers:
Bill Fretwell (660) 341-7735 & Jennifer Wood (217) 257-8812

SULLIVAN AUCTIONEERS, LLC
(844) 847-2161
www.SullivanAuctioneers.com
License #444000107

LARGE ON-SITE

GABRIELSON SURPLUS AUCTION

THURSDAY, NOVEMBER 17TH • 9:30 AM

AUCTION HELD ONSITE: 12971 LIV 255, CHILLICOTHE, MO

From Chillicothe, MO head east on Highway 36 for 4 miles to LIV 255, then head north for 1 mile to sale location. Auction signs posted sale day!

NEW INVENTORY STILL IN PACKAGING!

Featuring over 300+ pallets of unclaimed freight, warehouse surplus, and listed inventory from eBay and Amazon. Make plans to attend this one-of-a-kind auction. 2 auction rings will be running for the entire day. 1000's of items! Additional details and photos available online at www.teterauction.com

THE GABRIELSON FAMILY

TETER AUCTION COMPANY, LLC
(660) 963-2461
AUCTIONEERS:
Josh Teter, David May, Tyler Keenan

ADVANCED NOTICE • TIMED ONLINE

NO-RESERVE FARM EQUIPMENT

THURSDAY, DECEMBER 15TH • 10:00 AM

PHYSICAL ADDRESS: 31885 JULEP DR., MARCELINE, MO

ADDITIONAL INFORMATION COMING SOON!
BUCKLEY FARMS, LLC

TETER AUCTION COMPANY, LLC
(660) 963-2461
AUCTIONEERS:
Josh Teter, David May, Tyler Keenan

LINN COUNTY, MO

LAND AUCTION

THURS., DECEMBER 1 • 10:00 AM

AUCTION TO BE HELD AT LAMBERT COMMUNITY BUILDING:
821 PERSHING DR., LACLEDE, MISSOURI

159 ACRES ±

FARM WILL SELL FREE & CLEAR FOR 2023 FARMING SEASON!

The Holloway Farm is located approximately 4 miles northwest of Laclede, MO in Section 25 T58N-R21W of Jefferson Township, Linn County, MO. From Hwy 36 and Laclede junction, travel north on Hwy 5 for 2.5 miles to Fargo Rd., then go west on Fargo Rd. for 1.5 miles to farm. (Laclede is located 5 miles west of Brookfield or 20 miles east of Chillicothe).

Teter Auction Company is proud to offer 159 taxable acres m/l of high quality, highly productive tillable farmland located in Linn County, Missouri just northwest of Laclede, Missouri. The farm will be offered in one individual tract at 10:00 AM on Thursday, December 1, 2022. Farmers and investors, whether you are looking to add more acres to an existing operation, an investment tool to help beat inflation, or simply have a piece of property in a great area, be sure to check out this investment quality farm. The farm will sell free and clear with full farming rights for the 2023 cropping season. Make plans now to attend this exceptional land auction! For more information or inspection of property, contact auction firm at (660) 963-2461.

ADDITIONAL DETAILS, MAPS & PHOTOS ONLINE AT:
www.teterauction.com

GALEN & SUSAN HOLLOWAY
KEVIN HOLLOWAY

TETER AUCTION COMPANY, LLC
(660) 963-2461
AUCTIONEERS:
Josh Teter, David May, Tyler Keenan

TIMED ONLINE | NO-RESERVE

FARM RETIREMENT AUCTION

**BIDDING CLOSES: WED., NOVEMBER 16, 2022
STARTING AT 10:00 AM^{CDT}**

PHYSICAL ADDRESS: 24237 STATE HIGHWAY H, UNIONVILLE, MO

HIGHLIGHTS: '09 JD 7130 Premium MFWD tractor, 5,845 hrs. - 2 owner; '13 JD 569 round baler - 2 owner; '16 JD 630 MoCo - one owner; Kuhn SR110 Speedrake 10-wheel hay rake; '94 Cat D6H XL dozer, 20,583 hrs.; '98 JD 1518 15' batwing mower; International 45 Vibrashank 18' field cultivator; 18' harrowgator; JD 2-bottom pull-type plow; Golden Sun Feeds portable creep feeder; Feed King portable creep feeder; PCM 6-bale hay trailer; 10' flare box wagon w/ roof; (6) Priefert 12' corral panels; (4) Feed train 10' stationary feed bunks; 11' feed bunk; (3) Silver bale rings; (2) Older bale rings; Quantity of used wooden posts; Pallet of new barb wire; Calf puller; '17 W-W 16' livestock trailer; Also selling farm support items, tools & misc. items.

JOEL CHILDERS (660) 216-8020
Auction Manager: John Probasco (641) 856-7355

SULLIVAN AUCTIONEERS, LLC (844) 847-2161
www.SullivanAuctioneers.com License #444000107 670370jn

Call us for all your advertising needs. 660-665-8500. Call about our classified ad specials. 660-665-8500.

FIND THE RIGHT RIDE FOR THE RIGHT PRICE

Find the stuff you want. Sell the stuff you don't.

FARM LAND AUCTION

MACC ACTIVITY CENTER - 101 COLLEGE AVENUE - MOBERLY, MO
WEDNESDAY NOVEMBER 16, 2022 | 12 NOON

From Ditch Witch at Hwy 63 & CR 173 south of Moberly go east to CR 179 then north to CR 181 then east to farm. Watch for signs

Farm will be sold by the acre with top bidder having choice farm by the surveyed acre. Survey in progress!

TRACT #1
94 ACRES +/-

TRACT #2
51 ACRES +/-

TRACT 1: 94 Acres m/l of top-quality farmland * Farm lays very well with nearly 90% tillable, some terraced * Soils consist of Mexico & Leonard silt loams, grid sampling has been done on a consistent bases * Small portion (2 acres m/l) bordering southern tree lines in CRP until Oct. 2023 * County Road frontage on 2 sides * Nice farm in a good location!

TRACT 2: 51 Acres m/l of farm ground * 35 Acres m/l is enrolled in CRP until Oct. 2023 @ \$119.23 per acre * Remainder of farm has wooded draws, great hunting or just a get away with income * Property borders County Road with good access! Exact CRP acres will be determined by FSA if same buyer does not buy both tracts of land

TERMS: 10 % Down Auction Day with Balance Due and Possession Given at Closing 45 days * Buyer must enter into current CRP contracts after closing - Land sells with owner's confirmation

J & C Farms, Sellers
IMAN AUCTION COMPANY | 660-388-6235 | ImanAuction.com

SAYRE AUCTION, LLC

SATURDAY, NOVEMBER 19 2022 at 9:30AM
324 Hyatt St, Brookfield, MO

REAL ESTATE: Must see move in ready home w/ 2 bedrooms, 1 full and 1 half bath, laundry room, handicap accessible. Approximately 1,050 sq. ft. home sits on .31 acres. Attached one car garage, with a built-in storm shelter. Large, enclosed sunroom 1/2 finished (the other half is not.) This home has no stairs, vinyl siding and windows, metal roof. HVAC system was installed in 2019, gas hot water heater. Built-in custom cabinets, vinyl flooring in the kitchen, carpet throughout the rest of the house.

10'x15' portable shed sells separate.

HOUSE WILL SELL FIRST AT 9:30AM. 10% down day of sale with signed contract, balance at closing at Professional Land and Title. To view property, contact Shawn.

COINS-APPLIANCES-FURNITURE-HOUSE HOLD ITEMS: 50 States quarter set; Presidential Dollars coin set; 1928 D, red seal \$2 bill; foreign coins; Kenmore electric stove; Kenmore refrigerator/freezer; Kenmore small chest type freezer; Frigidaire stackable washer and dryer; overstuffed sofa; 3 cushion overstuffed sleeper sofa; rocker recliner; glider rocker; full bed; 2 matching dressers; full bed; one dresser; Calnapper lift chair (like new); coffee table; end tables; kitchen table 4-chairs; white clad cabinet; lamp stand; portable AC unit; Emerson 52" flat screen TV; Emerson 48" flat screen TV; 3 solid wood chairs; #3 Mammouth crock; sewing machine; Quartz Elephant clock; old pictures; old toys; shark sweeper; 2 infrared heaters; Bronco rear tire tiller; JD 110 riding lawn mower; Ranch King push mower; Mac 3818 chain saw; small tiller; galvanized round tub; Craftsman push mower; metal cabinet; iron elec. blower; dishes; pots and pans; cook books; large collection of salt and pepper shakers.

NOTE: This will be a small sale but one you don't want to miss. This house is move in ready, with no stairs or maintenance. Everything sells as is no guarantees. Statements sale day supersede printed materials.

OWNER: THE CHILDREN OF THE LATE MARCIE SENSENICH

SAYRE AUCTION, LLC

"If It's For Sale We Can Sell It" • Family Owned & Operated Since 1978!
www.sayreauction.com
Live and Online Auction Services
Cash, Check, and Credit Cards Accepted
Shawn Sayre 660-734-8782 Jordan Sayre 660-413-3230 Mark Cleveland 660-412-7040 Danny Jeffries 660-342-1075

NEMO TRADER • Advertise with us TODAY!
Phone: 660.665.8500 • PO BOX 809
701 East LaHarpe St, Suite C, KIRKSVILLE, MO 63501

Vaughan Estate AUCTION

THURSDAY, NOV 17TH @ 9:30 AM
605 S POPLAR AVE, SALISBURY, MO

Tractor - Pickup - Tools - Antiques - Furniture - Appliances - Household
Due to the passing of Doris Yvonne Vaughan, the following real estate & personal property will be sold at public auction.

Real Estate (Sells @ Noon): 2 Bed / 1 Bath Home in Salisbury! 1,676 sf of living area all on one level. Featuring a large living room, open kitchen, & additional family room. Home features a modern metal roof & vinyl siding. 1-car attached garage, two 1-car detached garages, & two small storage buildings. Located on a nice, 26,830 sf lot in a great location. For more info, visit: www.eyeartauctionrealty.com

John Deere Model A Tractor - Chevy C-10 Pickup

Antiques & Collectibles: (6) Large Metal Wagon Wheels, Vint "Sportster" Metal Pedal Car, JD 20 Metal Pedal Car, Tricycles, Vintage Sleds, Antique Quilts, 2, 4 & 6 Gal Crocks, Cast Iron Skillet, Vint Cameras, Binoculars, Bowling Balls, Large Holiday Yard Ornaments, Tractor Seat, Galvanized Tubs, Cans, Buckets, Corn Sheller, Metal Windmill, Skelly Oil Cans, Iron Kettle, More! * **Vintage Farm Toys & More:** Nice selection of vintage metal farm toys - Tonka Wrecker Truck, Michigan Shovel Crane, Tonka Roller, John Deere, Farmall, International Tractors & Implements, JD 5020 Diesel Tractor, & More. * **Lawnmower & Small Engines:** Craftsman LT 2000 Riding Lawnmower, Yardman 6hp Push Mower, Leaf Blower, Hose Reel, Weed Eaters, Propane Tanks, Ariens ST350 Snowblower, Power Washer, & More! * **Tools:** Many Like-New Items, Portable Generator (212cc Eng), CP Air 1/3 hp Air Compressor, Shop Creeper, Lots of Tool Boxes Filled w/ Hand Tools, David Bradley "Three Sixty" Large Chainsaw, Craftsman Impact, New Car Cleaning Equipment, Portable Air Tank, 10 Amp Charger, Grease Guns & New Grease, Lot Shovels, Scoops, Jobbers, Hand Saws, Chains, Homelite Chainsaw, Gas Cans, Schumacher Battery Charger, Air Hose, Jumper Cables, Heat & Antifreeze, 5" Grinder, Dewalt Impact, Soldering Kit, New B&D & Craftsman Cordless Drill/Drivers, Coleman Powermate, Fatmax Jump Starter, Dremel Tool, Wood Planes, Screwdrivers, Hammers, Sockets, Wrenches Floor Jack, Lot Yard & Hand Tools, Ladders, Chains, Lots of Fence T-posts, Chicken Wire, Car Ramps, Etc. * **Furniture:** Nice Wood Hutch, Dining Room Table, Desk, Storage & Filing Cabinets, Dressers, Kenwood Stereo System, Couches, Recliners, & More! * **Modern Appliances:** Modern Large Black Maytag Refrigerator, Crosley Refrigerator, Large Premier Black Gas Stove, Crosley Washer & Dryer Matching Set, Amana Upright Freezer, Microwave. * **Household:** Totes & Totes of Christmas, Lots of Yarn, Honeywell Space Heater, New Roaster, Kitchenware & Glassware, Flatware, Stainless Pots, Pans, Bakeware, Corning Ware, Crock Pots, Canning Jars, Coleman Coolers, Metal Christmas Tree Stands, Step Stool, DVDs, & More! **Other:** Metal Storage Building in the box, Lots of Fishing Lures, Weights, Tackle Boxes, Poles, Zebco 202 Reels, New Galaxy DX 959 CB Radio, Ashley Console Heater, Etc.

Full Listing & Photos available on our website: EyearAuctionRealty.com

Dale Linneman, Attorney for the Estate
Estate of Doris Yvonne Vaughan, Seller

ENYEART Auction & Realty LLC

Daniel: 660-288-3022 * Clayton: 660-651-3396 * Loren: 660-651-9889

BID NOW @ IMANAUCTION.COM

ONLINE ANTIQUE AUCTION

IMAN AUCTION CENTER | 34614 HWY 24 - SALISBURY, MO

FIRST LOT CLOSES SUNDAY, NOVEMBER 13 @ 6 PM

Selling over 1000 lots of Quality Antiques * 100 Pieces of Art Pottery by Roseville, Weller & Hull, many hard to find patterns * 100 Pieces of Walnut & Oak Furniture, China Cabinets, Hoosier & Sellers Kitchen Cabinets, Oak Ice Box, Harvest Table, Victorian Walnut Furniture, Dog Table, MT Dressers, Painted & Country Furniture, Large Selection * Good Primitives * Crocks * Churns * Cast Iron * Silver Coins * Gold & Silver Jewelry * Longaberger Baskets * 1,500+ Hallmark Ornaments * Halloween Paper Mache Items * Jewell & Depression Glass & Pyrex * Antique Dolls - Cut Glass * Nice Toys * Auction Terms With Full Listing & Bidding @ IMANAUCTION.COM

100 Pc. Pottery

100 Pc. Furniture

25 Clocks

Authorized Dealer
NH
NEW HOLLAND FARM MACHINERY

IMAN AUCTION COMPANY | 660-388-6235 | ImanAuction.com

SAYRE AUCTION, LLC

Saturday November 12th, 2022 10:30am
313 W 3rd St, Sumner, MO. Watch for sale signs. **ABSOLUTE ON SITE LIVE AUCTION**

REAL ESTATE: All of Lots 6 & 7 in block 17 in the village of Sumner, MO. Sits on .12 acres. Metal building 30'x30' with concrete floor, 2 over head doors and walk-through door.

REAL ESTATE: 311 Ash St. All of lot 25 in block 28 in Sumner MO. Sits on .14 acres 20'x40' slab house with screened back porch. With 2 bedrooms, 1 bath, living and dining room, laundry/mud room. Gas and baseboard heat, window AC unit. **PROPERTIES WILL SELL AT NOON AT THE 313 W 3rd location.** 10% down day of sale with a signed contract. Balance at closing at Professional Land and Title. To view property, contact Shawn.

TRUCK-TRACTOR-4 WHEELER-BOATS-GUNS-COINS: 1983 Chev Silverado 20 Truck 4x4, auto, 350 motor, 131k miles; 2110 Ford tractor w/776B loader, 4x4, rear wheel weights, homemade cab, 2701Hrs. Rhino SE6 3pt. Brush hog; 507 JD 3pt. finish mower; Ford 3pt boom; 2004 Artic Cat 300 4x4 wheeler; 1996 Lowe 16' aluminum low water boat, 1995 trailer, 2015 Mercury four stroke 25hp. Motor, 12' aluminum boat; 10' sail boat; 1966 Evinrude 3hp. Boat motor; C-100 8hp. Wheel horse riding mower; 3.75hp. Briggs & Stratton push mower; 3 phase sewage pump; U.S. Springfield 45-70 rifle; Thompson Center 50 cal. hex barrel wooden ramrod w/ 47553; some ammo, shot gun shells, 45-70 ammo, 22 shells; silver dollars, foreign coins, misc. coins, paper money.

CROCKS-GRANITE PANS-TOOLS-MISC ITEMS: #10 Western crock; #5 Red Wing crock; granite pans, dishes and bowls; old advertising items; hickory handle knives; meat saw; shop vac; cordless and elec. Hand tools; wheel barrows; weed eater; ladders; drill press; old generator; wheel chair ramp for your receiver hitch; wooden antique pie hatch; butter mold; gun cleaning kit; Rock Island coffee container; kerosene lamps; old advertising from Sumner; old utensils, cook books; Singer Treadle sewing machine; old mantle clock; hospial bed, Carnivale Glass; old pictures; disabled assistance items; metal day bed; small red wagon; old cabinet; several fishing poles; wash tub; steel posts; 12' aluminum gate; bunk beds; elec. pecan cracker; screw jacks; boxes of bolts and nuts; conduit bender; lots of scrap; much more sale day.

NOTE: Folks if you knew Cooney, he didn't throw anything away. An opportunity to purchase some nice properties in Sumner. Everything sells as is where is no guarantees. Not responsible for stolen or misplaced items. Statements sale day supersede printed material. Lunch by Ma's Sugar Shak. **OWNER: SON OF THE LATE EUGENE "COONEY" GARTON**

SAYRE AUCTION, LLC

"If It's For Sale We Can Sell It" • Family Owned & Operated Since 1978!
Live and Online Auction Services
Cash, Check, and Credit Cards Accepted
www.sayreauction.com
Shawn Sayre 660-734-8782 Jordan Sayre 660-413-3230 Bill Sayre 660-734-0827



McAfee Auction Service, LLC
375 S Johnson • Kahoka, MO
660-727-3796
www.mcafeeauctionservice.com

Marion County, MO LAND AUCTION

Sale conducted at the Sesquicentennial Building
located at 621 Johnston Ave, Palmyra, MO

123 ACRES/3 TRACTS

Lying on the West edge of Palmyra, MO in
Sect. 22 and 23, Twp. 58N, R6W Marion County, MO

- Tillable Cropland
- Pasture/Woods
- Building Sites
- Hunting



**Thursday,
November
17TH
at 6 PM**

REGINALD PFLANTZ IRR. TRUST
ROXIE BUNK, TRUSTEE/ MARK TWAIN TITLE CO., CLOSING AGENT



McAfee Auction Service, LLC
375 S Johnson • Kahoka, MO
660-727-3796
www.mcafeeauctionservice.com

Sale #1 TIMED ONLINE ONLY COIN AUCTION

LOTS START ENDING
SUNDAY NOVEMBER 27TH - 1PM



Selling a nice selection of "Key Date" Indian & Lincoln cents; "Key Date"; Mercury dimes; "key Date" Washington quarters; "Key Date" Morgan & Peace Dollars; Silver Eagles/ Bulk Silver; Dansco Albums of Silver Dimes, Quarters, Halves, Comm. Quarters, Ike, Susan B., Presidential Coins

Dr James E. Gardner Collection



McAfee Auction Service, LLC
375 S Johnson • Kahoka, MO
660-727-3796
www.mcafeeauctionservice.com

ONLINE ONLY HAY AUCTION

LOTS START ENDING
TUESDAY, NOVEMBER 29TH - 10AM



Selling 640 bales of Hay to include: Mixed Grass, Brome/Alalfa, Orchard/Alalfa, Alalfa and Oat Bales w/ Oats.
Free loading assistance by appointment
All hay to be picked up by Dec. 10th 2022

BID NOW! COMPLETE DETAILS ONLINE!
HENDERSON FARMS & SCOGGIN FARMS SELLERS

**ADDITIONAL DETAILS,
PHOTOS & AUCTIONS
AVAILABLE ONLINE!**

WWW.MCAFEEAUCTIONSERVICE.COM



McAfee Auction Service, LLC
375 S Johnson • Kahoka, MO
660-727-3796
www.mcafeeauctionservice.com

TIMED ONLINE ONLY AUCTION

THURSDAY, DECEMBER 1ST

LOTS START ENDING AT 10 AM

RING 1 - FARM EQUIPMENT, FARM SUPPORT & SHOP RELATED, ESTATE AUTO, HUNTING/ OUTDOORSMAN

Selling 2014 Toyota Camry, 35,500 miles (Estate Auto); AC 185 (D) & D-17 Tractors; Shortline Farm Equip; Farm Support & Shop Related; Hunting & Outdoorsman Items; Farm toys.
PREVIEW: Auto, Tractor & Farm Equip. can be viewed at 375 S. Johnson. Kahoka Mo.
NO PREVIEW AVAILABLE ON SMALL ITEMS. View terms on proxibid for pickup dates.

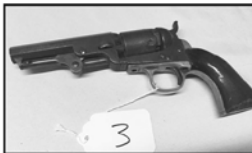


**COMPLETE
DETAILS
ONLINE**

RING 2 - ESTATE GUN & AMMO

Selling Rifles, Shotguns, Pistols & Ammo from the Larry Campbell Estate.
PREVIEW: Guns at Gabbys Gun Shop located at 743 N Walnut ST. Kahoka MO

November 28th, 29th & 30th
during regular business hours.
NO PREVIEW ON AMMO
View terms on proxibid for pickup dates.



**BARBARA AND THE LATE LARRY CAMPBELL,
WAYNE & BARB HOWELL,
MAXINE HYDE ESTATE & ANDY O'DAY SELLERS**



McAfee Auction Service, LLC
375 S Johnson • Kahoka, MO
660-727-3796
www.mcafeeauctionservice.com

TIMED ONLINE ONLY MACHINERY AUCTION

THURSDAY, DECEMBER 8TH

LOTS START ENDING AT 10 AM

LOCATION: CLARK COUNTY FAIRGROUNDS, KAHOKA, MO
PREVIEW STARTS DECEMBER 2ND - SALE DATE

Selling JD combine and heads, JD tractors, Semi and Trailers, Seed and Grain Handling Equipment, Tillage Equipment, Generator.



**WILSON FARMS
HERB & TERESA WILSON AND
SHIRLEY & THE LATE DANNY WILSON, SELLERS**

LAND AUCTIONS

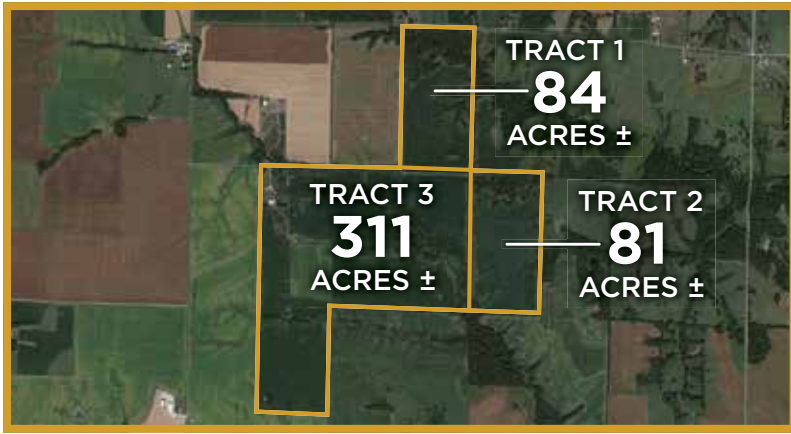


AUCTIONS - SEALED BID ONLY

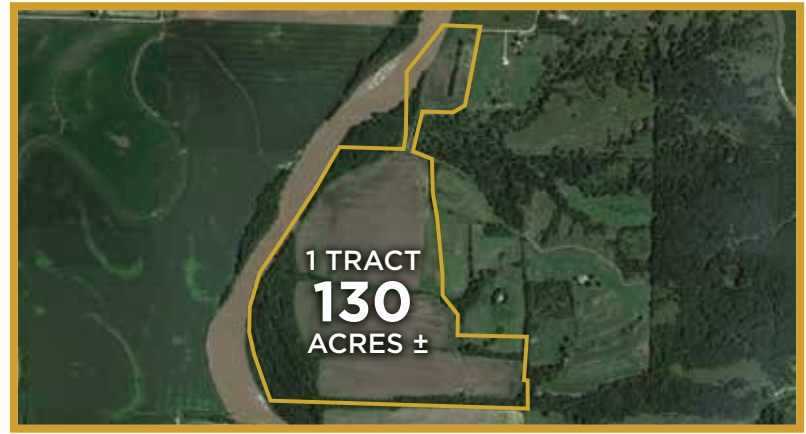
FIND DETAILS AT RANCHANDFARMAUCTIONS.COM

BIDS DUE BY: 11/29/22 | TIME: 5:00 PM CDT

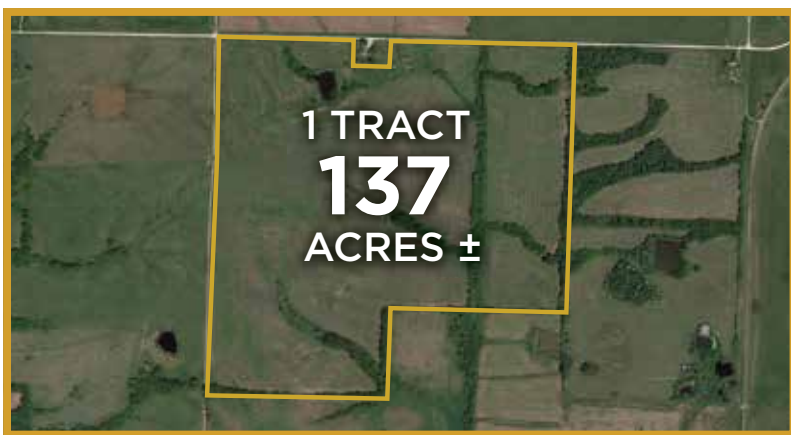
AUCTION LOCATION: Go to Ranchandfarmauctions.com, call 217-922-0811 or email directors@ranchandfarmauctions.com to request an information packet and Sealed bid form.



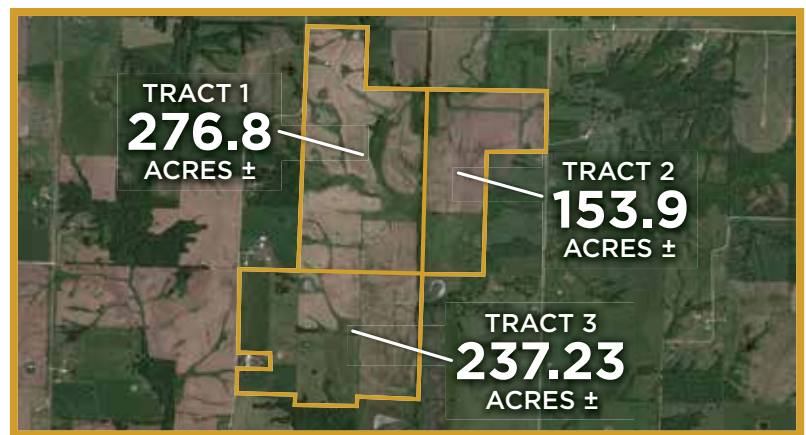
476 AC± | 3 TRACTS | CLARK CO, MO
FSA Farmland Acres: 337+/- acres
Soil Types: Adco silt loam, Armstrong silt loam, Leonard silt loam, Putnam silt loam
Soil PI/NCCPI/CSR2: Average NCCPI 63.1
Brief Legal: 476 +/- acres located S11/13/14 T63N R8W in Clark Co
Contact Jeff Propst, Agent (636) 209-0362
Jeff.Propst@whitetailproperties.com



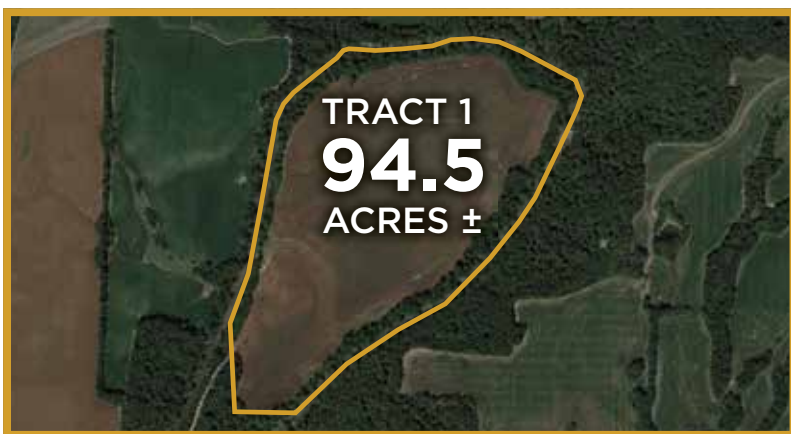
130 AC± | 1 TRACT | MACON CO, MO
FSA Farmland Acres: 96.14+/- acres
Soil Types: Dockery silt loam, Bremer loam, Darwin silty clay
Soil PI/NCCPI/CSR2: Average NCCPI 72.5
Brief Legal: 130+/- acres located S33/34 T58N R16W in Macon Co, MO
Contact Clay Lockard, Agent - (573) 466-9123
Clay.lockard@Whitetailproperties.com



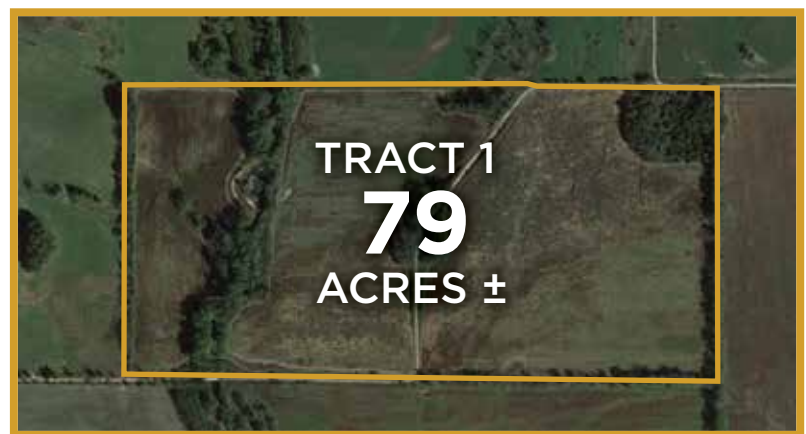
137 AC± | 1 TRACT | MACON CO, MO
FSA Farmland Acres: 132.04+/- acres
Soil Types: Armstrong loam, Armstrong clay loam, Bevier silty clay loam, Wilbur silt loam
Soil PI/NCCPI/CSR2: Average NCCPI 60.9
Brief Legal: 137+/- Acres Located S35 T57N R16W In Macon Co, Mo
Contact Clay Lockard, Agent - (573) 466-9123
Clay.lockard@Whitetailproperties.com



662 AC± | 3 TRACTS | MACON CO, MO
FSA Farmland Acres: 624.82+/- acres (from 156)
Soil Types: Blackoar silt loam, Vesser silt loam, Tice silty clay loam, Purdin loam, Armstrong loam
Soil PI/NCCPI/CSR2: Average NCCPI 75.5
Brief Legal: 662 +/- Acres Located S19/20/30 T57N R15W In Macon Co, Mo
Contact Clay Lockard, Agent - (573) 466-9123
Clay.lockard@Whitetailproperties.com

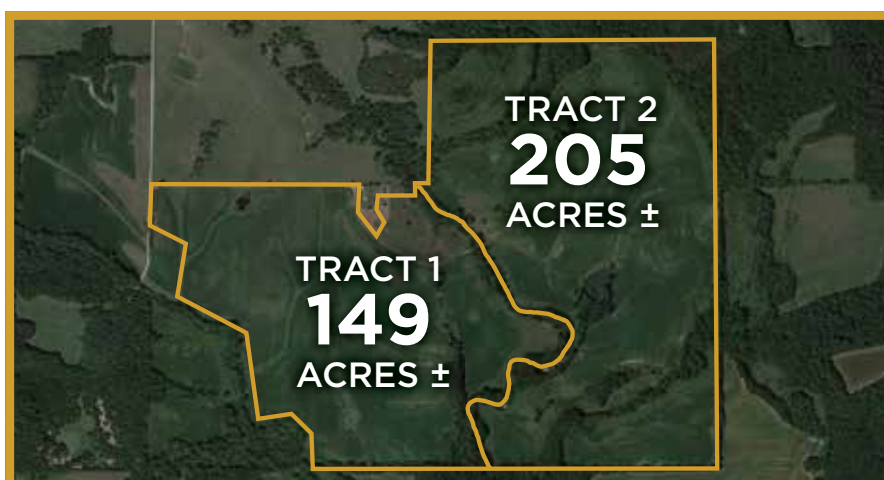


94.5 AC± | 1 TRACT | LEWIS CO, MO
FSA Farmland Acres: 74.08+/- acres
Soil Types: Arbela silt loam, Fatima silt loam, Gifford silt loam
Soil PI/NCCPI/CSR2: Average NCCPI 82.8
Brief Legal: 94.50 +/- Acres Located S5/6/7/8 T62N R9W Lewis Co, Mo
Contact Jeff Propst, Agent (636) 209-0362
Jeff.Propst@whitetailproperties.com



79 AC± | 1 TRACT | PUTNAM CO, MO
FSA Farmland Acres: 62.06 +/- acres
Soil Types: Gorin Silt loam, Humeston silt loam, Colo silt loam
Soil PI/NCCPI/CSR2: Average NCCPI 63.2
Brief Legal: S34/35 T66N R18W Putnam Co
Contact Jeff Propst, Agent (636) 209-0362
Jeff.Propst@whitetailproperties.com

LIVE AND ONLINE AT RANCHANDFARMAUCTIONS.COM



354 AC± | 2 TRACTS | RALLS CO, MO

AUCTION DATE: 12/2/22 | TIME: 1:00 Pm
AUCTION LOCATION: New London Fire Dept. 212 Carstarphen Drive | New London, Mo
FSA Farmland Acres: 313.92 +/- acres
Soil Types: Armstrong loam, Belknap silt lam, Gorin silt loam, Gifford silt loam
Soil PI/NCCPI/CSR2: NCCPI 66.5
Brief Legal: S28/29 T56N R6W In Ralls Co Mo
Contact Aaron Bennett, Agent 636.887.1022
aaron.bennett@whitetailproperties.com

IN COOPERATION WITH WHITETAIL PROPERTIES REAL ESTATE, LLC
RANCHANDFARMAUCTIONS.COM

IN COOPERATION WITH WHITETAIL PROPERTIES REAL ESTATE LLC (CO00001603) | Jefferson Kirk Gilbert, Missouri Broker, License # 2015034232 | Joe Gizdic, Director, Ranch & Farm Auctions, 217.299.0332 | Cody Lowderman, MO Auctioneer License 11037