

NEMO Trader

THE NEMO TRADER

PO BOX 809 • KIRKSVILLE, MO 63501 • PHONE 660-665-8500

Web Site: nemotrader.net • Email: sales@nemotrader.net



A WEEKLY ADVERTISER SERVING ALL OF NORTHEAST MISSOURI AND THE SURROUNDING AREA



HAPPY

Father's DAY

TO ALL THE FATHER AND FATHER FIGURES

FROM ALL OF US AT THE

KIRKSVILLE & **NEMO** Trader
Daily Express

ELIZABETH GREGORY
MISSOURI HOME & FARM
Innovative Real Estate for YOU!
660.621.2136

TRI-RIVERS FENCING, LLC
LANCASTER, MISSOURI
We specialize in barbed wire and continuous panel fencing and do excavation and bulldozing part time.
SPENCER GREENSTREET 660-342-8001
TRISTAN CLINE 660-341-3029

JARBOES CONSTRUCTION
DREAM HOUSE
We have the expertise and resources for all your construction needs!
• Electrical • Dry Wall
• Flooring • Roofing
• Plumbing • Additions
Ask how you can receive \$50.00 off your project!
660-342-9515
Follow us on Facebook

AMMO PLANET
200 W. POTTER AVE • KIRKSVILLE, MO • 660-956-4654 • 660-349-0070
AMMO-PLANET.COM • HOURS: MON & TUE 10-5 • WED-FRI 10-6 • SAT 10-3

Henry H001TML • 22 Mag	\$549	Kalashnikov KS-12 • 12ga.	\$899
Sig Sauer P322 • 22LR	\$450	Taurus Judge 6" • 45LC / 410 ga	\$475
Diamondback DB-15 • 5.56	\$499	Springfield Hellcat Optic Ready • 9MM	\$525

Get your Dad a gift he *really* wants this year!

EARLY FATHER'S DAY SALE 10% OFF EVERYTHING IN STOCK! 10% off starting June 12th-17th

LIME SPREADING SERVICE
Equipped with variable rate
PEAVLER TRUCKING LLC
Alan Peavler, 660-216-0618 - Jared Peavler, 660-342-7685

ANEW Realty Group, LLC
Kim Keyes, Broker/Owner
660.665.3277 cell: 660.626.3920
Commercial.Residential.Farm
AnewRealtyGroupLLC.com
511 S. Baltimore St. Suite 8
Kirksville, MO 63501

HOMES FOR SALE & RENT
2-3 BEDROOMS
Biggs Mobile Home Park
in LaPlata, MO
Seller Financing Available!

Call for details: **402-979-6620**

KEIM LUMBER COMPANY LLC
COMPETITIVE PRICES • FREE ESTIMATES

- COMPLETE BUILDING PACKAGES
- WINDOWS AND DOORS
- INSULATION • DRYWALL
- DELIVERY

13625 St. Hwy 3 LaPlata, MO

PURE WATER SOLUTIONS
Tired of hard water and bad taste?
WE HAVE YOUR SOLUTION!

Call Dave
 For Free Water Analysis
660-341-9007

PO Box 827 • Kirksville, MO 63501

- Water Softeners
- Reverse Osmosis
- Whole House Filters

Golden Grain Bins-Summer Savings

Grain Bins	Floors w/12" Supp. & Flashing
18'x18' 4,195bu. \$ 7,029	18'....\$1,962 30'....\$ 5,476
27'x21' 11,265bu. \$14,108	21'....\$2,682 36'....\$ 7,801
42'x24' 32,245bu. \$32,886	27'....\$4,474 42'....\$10,623

Golden Grain

GMLS Industries, Inc.
 PH: 660-699-2179 or 620-983-2136
 www.gmlsindustries.com

AGRI-BUSINESS

Cattle

1/2 Hals-Blood Simmental and Angus bulls. For more information visit our website at www.foundationcattletcompany.com. Chilli-cothe, MO. 816-312-0194

Neese Angus, bulls bred right and developed to work! Weights, measurements, EPD's, semen checked. May delivery. 641-344-4565.

Pure bred Hereford bulls, 2 years old. 13-14 month old heifers. Kevin Collins, Circle C Herefords, Powersville, MO. 660-216-3465.

Cows For Sale, very fancy. 50 Black Cows 7-SS, calving now; 10 Red Angus & Charolais Cross second and third period. Gentle and vaccinated. Call 660-537-6247

Call about our classified ad specials. **660-665-8500.**

Cattle

Heifers, F1 Heartbrand Akaushi (red wagyu)/registered Red Angus, 400-600 lbs. Photos, dam EPDs available. Premium extra marbling, docile. (573)434-2510

Limousin and Limousin Composite Bulls For Sale, black and red all polled with performance data and EPD's. Potters Limousin 641-436-7153. No answer, please leave message.

Equipment & Supplies

Round bale feeder insert for mineral feeder, mounted on tire, \$150.00 each. 217-658-3951.

John Deere 14T balers, both work. One has been rebuilt. Call John Davenport for more information, Coatsville. 660-933-4905.

NEMOTRADER.NET

BURKHOLDER

2020 Ford F-350 Lariat FX4, Dually
 Crew, 6.7 Diesel, Only 34k Miles, One-Owner, Clean Carfax, Near New Truck, Maroon/Gray

Full line of accessories **+** Outfit your truck here!

\$79,900

Edina 660-397-2551 51001 State Hwy 15 BurkholderTruckSales.com

<p>2020 GMC Sierra 3500HD Base 4x4, Dually, Crew, 6.6 Duramax, Allison, 62k One-Owner Mi, Clean Carfax, White</p> <p>\$59,900</p>	<p>2020 Ford F-250 XLT, 4x4, Reg Cab Long Bed, 6.2V8, Auto, 83k One-Owner Miles, Very Well Kept, Hard to Find, White</p> <p>\$43,900</p>	<p>2019 Toyota Sienna LE AWD, 7 Pass 3.5V6, Auto, 107k One-Owner Mi, Clean Carfax, Perfect Service Record, Nice, Gray</p> <p>\$26,900</p>	<p>2019 Chevy Express 3500 LT 15 Pass, 6.0V8, 91k Miles, Clean Carfax, Nice-Clean, Southern Van, Taxi Ready, Blk</p> <p>\$39,900</p>	<p>2018 Ford F-150 XLT, 4x4, 5.0V8 SuperCrew, 6' Bed, 96k Miles, Wyoming Truck, Nice-Clean, Come See, Maroon</p> <p>\$31,500</p>
<p>2017 Chevy Silverado 2500HD LT 4x4, Double Cab 4dr, 6.0V8, 110k One-Owner Miles, New Trans, New Tires, Red</p> <p>\$34,900</p>	<p>2016 Nissan NVP 3500 HD SL 12 Pass, 5.6V8, Auto, 80k Mi, One-Owner, Well Kept, Taxi or Family Ready, Brown</p> <p>\$37,900</p>	<p>2014 Chevy Express 1500 LT AWD 8 Pass, 5.3V8, Auto, Only 63k Miles, One-Owner, Hard to Find, Family Ready, Black</p> <p>\$41,900</p>	<p>2019 Ford F-550 XL, Ext Cab, 4x4 6.7 Diesel, Auto, 98k Miles, Utility Bed w/ 6,500 lb Crane, Miller EnPak, Nice</p> <p>\$124,900</p>	<p>2011 Chevy Silverado 2500HD, 4x4 Ext Cab, Utility Bed, 6.6 Duramax, Allison, 104k Mile, One-Owner, Texas Truck, Silver</p> <p>\$42,900</p>

BW Trailer Hitches

- All Aluminum
- Customizable
- Built Locally

Martin Truck Bodies

Gatorback Mud Flaps

weather guard Toolboxes

1. Get your truck.

We've got late-model, quality, used trucks for every need and budget. If we don't have it, we'll find it.

2. Make it custom.

Outfit your truck with expert installation and top-of-the-line brands.

WeatherTech WESTIN

RANCH HAND BW

RIDE-RITE GEN-YHITCH

BLUE OX DECKED

DIODE DYNAMICS weather guard

AUTO & TRUCK SALES + ACCESSORIES

NEMO Traders BRAIN GAMES

CROSSWORD PUZZLE

-JUNE- WEEK 3

PUZZLE SODOKU

-JUNE- WEEK 3

Here's How It Works:
Sudoku puzzles are formatted as a 9x9 grid, broken down into nine 3x3 boxes. To solve a sudoku, the numbers 1 through 9 must fill each row, column and box. Each number can appear only once in each row, column and box. You can figure out the order in which the numbers will appear by using the numeric clues already provided in the boxes. The more numbers you name, the easier it gets to solve the puzzle!

5	4		7					6
			5				3	7
			1	5				2
			3	5				4
2		6						1
7								
		2	7				4	
3			8					5
	6	9						8

Level: Intermediate

Fun By The Numbers

Like puzzles? Then you'll love sudoku. This mind-bending puzzle will have you hooked from the moment you square off, so sharpen your pencil and put your sudoku savvy to the test!

CLUES ACROSS

- Understand intuitively
- Two of something
- Not involving computer tech
- Acclaimed
- Undermine
- The condition of being concealed or hidden
- Irritate
- The process of developing a theory
- Ceramic jar
- Not fresh
- Dad's fashion accessory
- Popular review site
- New Mexico county
- '__ death do us part
- Fees
- Takes with force
- One-time Yankees rookie sensation
- Gordon and Snider are two
- Body parts
- Arranges
- Fiddler crabs
- Mimics
- Witnesses
- They __
- Lasso
- Runs down
- In response to
- Bird-like dinosaur
- Metamorphic stages
- Conditions of incapacity
- Sodas are sold in these units
- Break away from
- Ethereal
- Boggy

CLUES DOWN

- Mangled
- Ruffled some feathers
- Not young
- Lakers legend
- Nocturnal S. American rodent
- Direction (Scottish)
- Intestinal inflammation
- Spring back in fear
- Owl genus
- Girls
- Unbeliefs
- Force unit
- Expired trade agreement
- Went alone
- Animal noises
- Woman who graduated from a specific school
- The very top
- Organs in males
- Earnings
- Z Z Z
- Reddish browns
- A salt or ester of acetic acid
- A place to get off your feet
- More disreputable
- Kidney condition
- Cease moving
- Quick
- Extra seed covering
- "Survivor: Panama" winner
- Six
- One who inspects lamps
- Small parrot
- Primordial matter of the universe
- __ fi (slang)

CRYPTO FUN

Determine the code to reveal the answer!

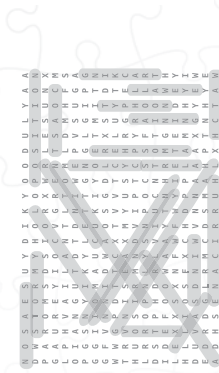
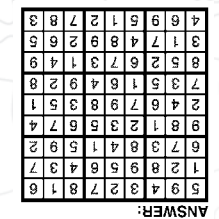
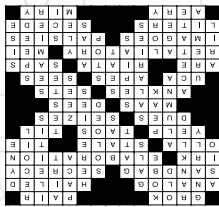
Solve the code to discover words related to hurricanes. Each number corresponds to a letter. (Hint: 3 = E)

- A. 26 22 26 5 4 10 2 3 17**
Clue: Persisting
- B. 3 13 3**
Clue: Storm center
- C. 17 4 8 4 20 3**
Clue: Ruin
- D. 22 1 16 11 11 5**
Clue: Move forceably

Answers: A. Sustained Heavy Damage D. Impact

WORD SEARCH

-JUNE- WEEK 3



HURRICANE SEASON WORD SEARCH

N O S A E S U Y D I K Y O O D U L Y A A
D W S T O R M Y H O L O P O S I T I O N X
P A R O M S D S I O R X W R L E S A O C M
G A U R E Y I O C V G R E N T L E S A O C X
L P H V A I L A N T L T O M L D M H F S
O I A N G U T D T D N I W E P L V S U G A
P G S N Y I K Y L E T T G N G E L G I P G
G G I I O M A U C U K I Y O E T M I T N
G F V N N I D W A O S G D L R X S T D I
W W G P D T T C X T V V L C E L U Y T K
T R V N I S E A X M Y U S Y H R G P E C A
H U O S I R M N D V I P T C P Y R H L L A
L R R O P N L Y S N P O C S S F A O L L R T
D S T P H D R L V I U C N T O T I O A T
I D E F O O W A A Y T N H R M G N N W H
L E X X S X N F W F W Y I E T E I D E Y I
H L L I O S F X C H D P P L A M N H Y Y
D U V A S D N I W V N N A A X G Y E W
E D R D G L R M C D S M A H P T N H Y
A D H S E N A C I R S U H L X H C T A W

WORDS

- ADVISORY
- ALERTS
- ATMOSPHERE
- CENTER
- COAST
- CYCLONE
- EYE WALL
- GALE
- HURRICANE
- INTENSITY
- INUNDATION
- LANDFALL
- LOCATION
- POSITION
- PRECAUTION
- RAINING
- SEASON
- STORMY
- TRACKING
- TYPHOON
- VORTEX
- WARNING
- WATCH
- WINDS

Find the words hidden vertically, horizontally, diagonally, and backwards.

Show Me Plumbing Services

- General Mini Excavation & Skid Steer Work
- Livestock Watering
- Waterlines & Sewer Systems
- Residential Services & General Plumbing
- Utility Trenching

Stan Schrock 660-988-1163
Greentop, MO 660-766-2636

TIMBER MANAGEMENT.

Purchasing Walnut, Oak, Maple & Other Species

WE PAY BEFORE WE CUT

BONDED & INSURED

641-895-8209

Est. 1968

LOLLI LIVESTOCK MKT, INC.

Tuesday, June 20 - 11am

Special Cow, Cow/Calf & Breeding Bull Sale

TONY KILLEN - Complete Dispersal - 20 blk cows, bred to Angus bulls: 6-SS, 5 blk c/c pairs, 6-SS.
DOUG KRUESSELL - 30 blk/bwf cows: 4-8 years old, bred to Angus bulls.
JOHN LUECKE - 30 Angus/Wagyu cross cows: 4-8 years old with 400-500lb calves by side. Bred back to registered Angus bulls.
GARY YOUNG - 25 blk/bwf cows: 4-8 years old, bred to registered Angus bulls.
LARRY ROBERTS - 20 blk & red cows: 4-SS, start calving August 15th, bred to Sysen Angus bull.
BENNY MURPHY - 12 blk Angus cows: 3-SS, fall bred to blk Angus bull.
DAN FITZHUGH - 1 red/black Angus cross virgin bull: 18 months.

This is a partial listing with more to be added.

June 27 - Special Calf & Yearling Sale

Cafe Open Lolli Livestock Market, Inc. Cafe Open
704 Main st * Macon, MO * 660-385-2516 www.lolibros.com
Frankie 660-651-4040 * Tim 660-651-3496 * Joseph 660-346-9711
Jordan 660-346-0410 * Cody 660-676-9392 Cattle accepted on Sundays

Edina Livestock Sales

Edina, Missouri

Friday, June 16th
Special Feeder Calf Sale
Several loads of Yearlings

Friday, June 23rd
Special Feeder Calf Sale

To Consign For Any or All Sales or For Information Call:
Owner - Kevin Strange • Cell: 660-341-9974
Ryan Strange • Cell: 660-341-9721
Sale Barn: 660-397-9999

Field Reps:
Bill Tom Hall 660-342-5420 Mike Bronestine 660-341-9965
Jason Bichsel 660-216-0373 John Powell 660-341-1717

FOR SALE
AI Sired Angus Bulls,
14 & 18 Months Old.
Harold Trump
660-341-5730

Polled Hereford BULLS

GALEN KRIEG
217-743-5382
309-299-5695

Basco, IL

WE GOT YOUR NEEDS COVERED!

FARM TARPS TRUCK TARPS
HOOP BUILDING COVERS

Purebred Angus Bulls For Sale

- SyGen Rampage 7408
- BSE and TRICH Tested
- Great Shape and Disposition
- 5 Years Old
- Easy Calving
- Solid Growth EPD's
- HD 50K
- Registered & Commercial Bulls, Full BSE Exam
- TRICH tested
- Various Ages
- Excellent Condition
- Raised Properly for longevity and good feet
- Athletic & Good Dispositions

John Davenport, Coatsville, MO • 660-933-4905

Troyer

TARP MFG.

660-486-3301

20264 STATE HWY. VV • ETHEL, MO 63539

\$12,000 Cash. Firm

79 RANCHERO - 500 GT
NEW CRATE MOTOR-351W
 3 yr. unlimited warranty, New Tires.
 Lots of new parts.

99 Wide Glide **\$6,500**
 Low miles, 20K, new paint,
 New chrome. **Cash**

CALL 660-341-6147

FOR SALE

2017 Ford F350
 161,000 miles, bale
 bed with cake
 feeder on scales.
\$60,000⁰⁰
 660-676-7677

NEMO ADS SELL! Call for more information and specials. **660-665-8500.**

BE AN EARLY BIRD! Place your ads before Monday and beat the rush!

ATTENTION HVAC CONTRACTORS

Capnemo is seeking qualified HVAC contractors to bid for the Weatherization Program serving Adair, Clark, Knox, Schuyler, & Scotland counties.

Info and documents are available at:
 www.capnemo.org
 or 215 N. Elson Kirksville, MO 63501
 660.665.9855

Accepting bids until COB June 29th, 2023

JAGUAR LUMBER
Attn: Land Owners

Buyer of Timber
 *All species also Select yard
 Trees/Logs over 40" diameter,
 *Trees are selectively cut
 to insure optimal Forest
 Regeneration.

Certified & Bonded | Lavon Gingerich 641-664-2080

Call us for all your advertising needs. **660-665-8500.**

Call about our classified ad specials. **660-665-8500.**

LAN-DOW BUILDINGS
"We Build To Suit Your Needs"
"Custom Built"
 Pole Barns • Garages • Utility Buildings
 "H" Don or Dick Middleton

Memphis Lumber Co.
 1-800-337-5858 • 660-465-8595
 Fax: 660-465-8596

LION'S CLUB GUN SHOW
 Buy-Sell-Trade

Lion's Club Building (PC Fairgrounds)
 UNIONVILLE, MO

Saturday, June 24th at 8AM

\$\$\$ CASH FOR GUNS \$\$

\$5.00 ADMISSION
Proceeds go to Lions Club

A GUN SHOW WITH LOTS OF GUNS!!

VENDORS WANTED
TABLES \$10

CALL JIM to Reserve
660-355-GUNS (4867)

AWESOME BREAKFAST & LUNCH SERVED!

STOMBAUGH ASPHALT
 RESIDENTIAL ★ COMMERCIAL

- ★ PAVING
- ★ CHIP & SEAL
- ★ SEALING
- ★ PARKING LOT STRIPING

573-406-8706

CELEBRATIONS!
PARTY RENTAL
 KIRKSVILLE, MO

FOR RENT

- Tables & Chairs
- Tents • Bounce House
- Cotton Candy Machine
- & More!

660-626-5162 or 660-665-9380

LANCASTER LUMBER INC.

Lancaster, MO.

1-800-424-5071

LAN-DOW BUILDINGS

www.lancasterlumber.com

SHOW-ME SEAMLESS GUTTERING
 FREE ESTIMATES • PROMPT SERVICE

- 5" & 6" Gutters
- Siding • Soffit • Fascia

(23 colors available on Gutters & Fascia)

Tried of Cleaning your Gutters?
LEAFPROOF THEM!

ELLIOTT HIX **LEAFPROOF**
 660-626-3447 • KIRKSVILLE, MO

NEMO

Trader

APPANOOSE DAVIS LEE HANCOCK

PUTNAM SCHUYLER SCOTLAND CLARK

SULLIVAN ADAIR KNOX LEWIS ADAMS

GRUNDY

LIVINGSTON LINN MACON SHELBY MARION

RANDOLPH MONROE

701 E. LaHarpe Street Ste. C
Kirksville, MO 63501
660-665-8500
sales@nemotrader.net

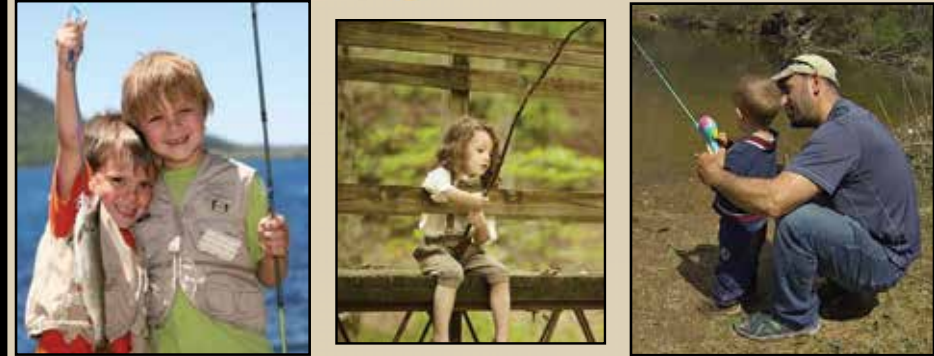
Our circulation is 11,000 with a 21 county coverage area in Missouri, Iowa and Illinois. Our paper is a free paper and is distributed to restaurants, convenience stores and other businesses in the area for individuals to pick up. We have a new issue every Friday.

TOWN	STATE	COUNTY	TOWN	STATE	COUNTY	TOWN	STATE	COUNTY
Quincy	Illinois	Adams	Galt	Missouri	Grundy	Palmyra	Missouri	Marion
Carthage	Illinois	Hancock	Trenton	Missouri	Grundy	Taylor	Missouri	Marion
Hamilton	Illinois	Hancock	Baring	Missouri	Knox	West Quincy	Missouri	Marion
Centerville	Iowa	Appanoose	Edina	Missouri	Knox	Madison	Missouri	Monroe
Cincinnati	Iowa	Appanoose	Knox City	Missouri	Knox	Monroe City	Missouri	Monroe
Moravia	Iowa	Appanoose	Canton	Missouri	Lewis	Paris	Missouri	Monroe
Unionville	Iowa	Appanoose	Ewing	Missouri	Lewis	Livonia	Missouri	Putnam
Bloomfield	Iowa	Davis	Labelle	Missouri	Lewis	Unionville	Missouri	Putnam
Drakesville	Iowa	Davis	Lewistown	Missouri	Lewis	Moberly	Missouri	Randolph
Ft. Madison	Iowa	Lee	Brookfield	Missouri	Linn	Downing	Missouri	Schuyler
Hwy 2	Iowa	Lee	Marceline	Missouri	Linn	Lancaster	Missouri	Schuyler
Keokuk	Iowa	Lee	Chillicothe	Missouri	Livingston	Queen City	Missouri	Schuyler
Montrose	Iowa	Lee	Atlanta	Missouri	Macon	Arbela	Missouri	Scotland
Brashear	Missouri	Adair	Bevier	Missouri	Macon	Memphis	Missouri	Scotland
Kirksville	Missouri	Adair	Callao	Missouri	Macon	Rutledge	Missouri	Scotland
Novinger	Missouri	Adair	LaPlata	Missouri	Macon	Shelbina	Missouri	Shelby
Alexandria	Missouri	Clark	Macon	Missouri	Macon	Green City	Missouri	Sullivan
Kahoka	Missouri	Clark	New Cambria	Missouri	Macon	Milan	Missouri	Sullivan
Wayland	Missouri	Clark	Hannibal	Missouri	Marion			

Spring is a Great Time to Stock Your Lakes & Ponds!! Come see us for Freshwater, Game & Baitfish.



Species Available: Large mouth bass, hybrid bluegill, bluegill, redear sunfish, black crappie, fathead minnow, walleye, muskie catfish, golden shiners and more!



Time to gather up the little ones, get their fishing poles and go enjoy a day of fishing!



660-423-5482

Contact us for price & delivery.

info@harrisonfishery.com • www.harrisonfishery.com

MARQUETTE SONNY'S BODY SHOP AUCTION SATURDAY, JUNE 17TH @ 11 A.M. AUCTION SERVICES 101 N ABAT, MEXICO, MO

Directions: From Hwy 15 (N. Western) & Hwy 22 (W. Monroe) intersection in Mexico. Head west on Hwy 22 (W. Monroe) past Walgreens and drive .3 miles, then turn left onto N. Abat St. next to Casey's. Sale will be on the right.
Auctioneer's Note: We have the privilege to conduct an auction for longtime Mexico businessman Sonny Dillard. Sonny owned and operated Sonny's Body Shop for many years in Mexico and we're excited to conduct this auction for him. Many tools were added by Mark Snellen of Hallsville. We hope to see you at this great auction!
Auction Terms: Not responsible for accidents or theft. Additions and deletions may occur. Announcements on day of sale take precedence over all advertisements. Payment due on day of sale in the form of cash, good check or credit card w/convenience fee.

Tractor & Lawn Tractors

8N Ford tractor w/new 11.2-28 rear tires - Cub Cadet 1650 w/50" mower deck & rear mount tiller - Scotts (John Deere) 16hp w/42" cut riding lawn mower (bad rear end)

Guns & Ammo

Howa mod. 1500, 22-250 w/scope - Remington Mod. 710, 270 - Remington 552 Speedmaster .22LR/LS - Harrison Richards Mod. 1871 Buffalo Classic 45-70 - Mauser Mod. 98 7x57 sportified - Johnson & Sons 1890 side by side double hammer 12ga - Springfield side by side 12ga - Thomson Center inline 50cal. Muzzle loader - 100rds 45-70 (reloads and new) - 200rds 22-250 (reloads & new) - 180rds 7x57 (reloads & new) - 60rds 270win (reloads and new) - Box 525rds .22lr

Tool Boxes, Lift & Large Tools

Matco 86Wx27Dx48H 27 drawer large mechanics tool box - Mac 8 drawer traditional bottom box w/side cabinet & Mac 12 drawer top box - Clark 41Wx18D 14drawer top box - Montezuma wedge tool box - Matco roller cart (rough) - 4 post drive on mechanics lift, 12-14k capacity (lift originally was used in Ben's Auto Body, recently restored) - Mac roller chair - NAPA 82-209-IBT 10hp, 250psi, 150 gal, 3 phase compressor - Ingersoll Rand Industrial TS4NS 230 volt, 175psi, 80gal compressor - Craftsman 1.9hp, 27gal, 120v, 7.2 SCFM @ 40psi 5.8 SCFM @ 90 - Hobart Handler 135 110mig welder - contractor 6.5hp, 14gal, Shop Vac - Ready-Welder battery powered mig welder (needs circuit panel) - Speedglass welding helmet - 2 1/2 ton floor jack - 6 ton jack stands - (2) 4' floor jacks - Mac knee pillow - many magnetic trays - Multiple 3/8 chains in multiple lengths - Portacool Jetstream 240 (used one season) - Extreme garage 30" industrial barrel fan - composite drive on ramps - 4' metal work bench - Tow ropes - wooden mac creeper - pneumatic hose reel - Multiple drawer style parts cabinets

Body Shop Tools

Antique Kansas Jack single post frame machine w/attachments - air over hydraulic (lift) - Astroline 108c 10 ton shop press/porta-power - Red Devil paint shaker - Zeks high temp industrial pneumatic air dryer - Blackhawk Core ex frame Machine w/gauges - PDR light stand - many frame machine hooks & clamps - Full set of tram gauges - (2) trip lite heat lamps - masking paper cart - wall mount masking dispenser - masking film dispenser - (2) primer stands - roll around painter's table - painters ladder - Matco door skin hammer - 10l slide hammer - Snap-On metal shrinking hammer - Snap-On 8" mud hog DA - Hutchings 6" DA - Mac 8" angle polisher - Hutching 2006 6" vacuum DA - 16" Hutching orbital sander - Precise Laser System for measuring unibody damage - Snap-On crud-thug - Blue Point long barrel cut off tool - Blue Point spot weld guided drill - Matco 6" coarse DA - PDR tool kit including glue tab tool & slide hamper - Stinger unispotter - misc door trim tools - (4) Sata mini jet HVLP paint guns - (2) Sata jet RP HVLP paint guns

Signs/Antiques & Parts

Custom "Sonny's Automotive" clock - Antique Pepsi-Cola 35 cent bottle machine - "Take Home a Case" metal Pepsi sign - large Miller Lite beer clock - PPG thermometer - metal Blackhawk collision repair sign - PPG Ditzler black board - metal Matco truck tin - Antique miniature wash tub w/wringer - top of Hoosier cabinet w/amber glass - (7) vintage NAPA wall cabinets - multiple hub caps (many Mustang) - vintage electrical parts cabinet - Delco battery thermometer - PPG wall cabinet - (2) leather office chairs - large amount of new old stock parts - new Ford 9" housing built by SCP

Mechanic Hand Tools

Set of Matco roll pin punches - Snap-On MR2000 air scraper - Matco 3/8 ratchet w/set of pass-thru sockets - Snap-On 1/2" 12mm-24mm 6pt shallow sockets - Snap-On 3/8" 5/16-1" deep impact sockets - Snap-On 3/8 8mm-19mm deep impact socket set - Snap-On 3/8 8mm-19mm shallow impact socket set - Snap-On metric hex socket set - Matco inverted torx impact socket set - Snap-On screwdriver set - Snap-On ratcheting screw driver - Blackhawk 3/8-3/4 combo ratchet wrenches - Matco 3/8 air ratchet - Mac 1/2" 24" breaker bar - Mac 1/2" AWP075 pneumatic impact (new-never used) - Matco 11mm-18mm double box ratcheting wrenches - Matco 6mm-19mm combination wrenches - Matco 10mm-19mm stubby combo wrenches - Matco 8mm-21mm line wrenches - Snap-On 1/2" 3/8"-1 1/16" shallow impact sockets - Matco 3/8d 15mm-23mm deep 6pt chrome sockets - Snap-On torx socket set - Snap-On long barrel air chisel (like new) - Snap-On metric tap & die set - Blue Point SAE tap & die set - Blue Point hose clamp set - Mac 5pc wheel stud retreat kit - Matco 10pc hex spline extractor set - Mac ball joint/U joint press - Matco wheel lock removal kit - Matco right angle 3/8 drill - Mac hole punch & crimper - Snap-On 3/8 impact - Snap-On 1/2" impact - Blue Point 1/2" impact - Blue Point mini saw-zaw - 1/2" Snap-On air ratchet - Blue Point air shear - Snap-On drill - multiple sets of Craftsman wrenches - large pop riveter - Mac clamshell strut tool - Matco hole saw kit - Snap-On 10pc carbide burr set - (5) vise grip spot weld plyers - (2) vise-grip duck bill plyers - (11) vise-grip mini c-clamp plyers - (3) XL vise grip c-clamp plyers - (11) traditional vise grips - large set of SAE Craftsman combo wrenches up to 1 5/16" - 22mm-30mm Craftsman metric wrenches - Matco 3/8 ratchet - large set of 1/2" "Grip" crows feet - misc Sunex 1/2" impact sockets - many partial Craftsman socket sets 1/2, 3/8 & 1/2" deep & shallow - many Craftsman ratchets - 3/8 1/2" Craftsman extensions - Harbor Freight 1/2" SAE & metric socket set - large set of angle wrenches up to 1 1/2" - 30" metal break - box of 17 random Snap-On & Matco sockets - misc Snap-On picks & screwdrivers - misc Snap-On & Matco wobble swivels, adapters, plyers & extensions - many other misc tools

SELLER: Sonny Dillard & Mark Snellen

Caleb Marquette-Owner/Auctioneer (573-721-1106)
Samuel Fair-Auctioneer (515-351-2468)
Cody Noel-Auctioneer (573-470-5678)
Harrison Backer-Auctioneer (573-575-8661)
www.marquetteauctionservices.com

Auction Zip
Auctioneer ID # 32114

Find us on Facebook!

Your message has

MUSCLE

In the

CLASSIFIEDS!

BOOST YOUR BUSINESS WITH NEWSPAPER ADS.
Ask about our affordable rates to fit any budget!

Equipment & Supplies

Woods HD 315, 15 foot batwing rotary cutter, hydraulic fold, solid deck, 540 pto, stump jumpers, stored inside, ready to mow, \$3700.00. 217-257-1385.

2000 Featherlite STL goose neck livestock trailer, 6 1/2 x 20, good condition. \$4500.00. 217-658-3951.

2012 Kubota M6040, 522 hours, 63 hp with loader, wheel weights and fluid, canopy, one remote. 573-+288-4757.

7' bush hog 3 point Cat, two good condition. \$2900/ Farm Star 3 point disk, build good cat, \$1500.00. 573-288-4757.

Equipment & Supplies

Woods Cadet #84, Rotary Cutter 7', 3 pt., 540 PTO, solid deck, \$1050. Plastic mineral tubs for watering, \$5.00 each. 217-257-1385

Farmers Market

Home grown tomatoes 3 pounds for \$7.25 or \$2.75/pound. Potatoes, onion, lettuce, zucchini and other vegetables. Schmucker Produce, 7 miles North of Kirksville to Ft. Madison Way, East 1/2 mile.

Need something? Let us help you. You can advertise that you are looking for a special item. Call 660-665-8500 for more information.

Livestock

Angus bulls, 18 months and yearlings. Over 50 years breeding, proven genetics that work! Neese Angus, Rutledge, Mo. 641-344-4565.

Pure bred Hereford bulls, 2 years old. 13-14 month old heifers. Kevin Collins, Circle C Herefords, Powersville, MO. 660-216-3465.

Fish for stocking ponds: catfish, grass carp, crappie, redear, bass, an fathead minnows. Heindselman Family Farms. 660-341-5692.

Dorpher/Katahdin hair sheep bred ewes to lamb this fall. \$150.00 each. 660-689-3005.

VICTORY

Metals & Recycling

KIRKSVILLE, MO
660-665-8000

For current scrap prices call or visit our Facebook Page victorymetalrecycling.com



★ METAL RECYCLING

RECYCLE YOUR SCRAP METAL WITH US! WE PAY CASH FOR: COPPER, ALUMINUM, STEEL, STAINLESS STEEL, APPLIANCES, E-SCRAP, BRASS, LEAD, RADIATORS, ALTERNATORS, BATTERIES, STARTERS, ELECTRIC MOTORS, APPLIANCES, & VEHICLES (TITLE & ID REQUIRED).

★ ROLL-OFF CONTAINER

10-20-30-40 CUBIC YARD DUMPSTERS

3602 INDUSTRIAL RD. • KIRKSVILLE, MO 63501
DJANESVMR@GMAIL.COM
WWW.VICTORYMETALRECYCLING.COM

Animal Housing, Hay Storage & Much More!!



Skylight
Fabric Structures
20749 State Highway VV
Ethel, MO 63539
660-486-3250
833-482-8862

SPACE AVAILABLE

Out-of-this-world print advertising rates that fit any budget!



Adair County Ag & Lawn LLC.
7 miles east of Greentop, MO



2017 Deere 331G
2280 hrs., Cab AC & Heat, selectable controls, ISO-H Pattern, 2 sp, High flow Hyd., Very Nice Condition
\$49,950

7030 Vermeer Disc Mower
9 FT., Field Ready, Used Last Year. **\$5,995**

Cell: 660-341-6267 • Shop: 660-397-9970

ATTENTION LAND OWNERS!!

Buyer of standing timber
Paying Cash Upfront!

Owner/Operator of Sawmill

- Buy/Cut Logs
- Certified
- Bonded
- Insured



WE HAVE SEMI LOADS OF FIRE WOOD LOGS FOR SALE

Tri State Timber L.L.C.
353 1/2 Grand Ave. • Memphis, Mo 63555
660-341-4921 • 660-465-2975

Livestock

Dorpher/Katahdin hair sheep ram and ewe lambs. 2 - 3 months old. \$125.00 each. 660-689-3005.

Yearling standard bred filly and a seven year old gray mare. 660-342-5314.

EMPLOYMENT

Work Wanted

WE DO Roofing, Siding, and Power Washing! Free Estimates! Call 660-956-6987

Transportation/Drivers

NEED YOUR CDL? We furnish the truck, trailer and teach all requirements for ELDT and skills test. We go with our truck to the State Highway Patrol for the test. Requires 2 days of in person training. MUCH CHEAPER WAY TO GET YOUR CDL Jefferson City, Willow Springs MO. Call (573)353-2853 for more information www.capitaltruckinginstitute.com

MERCHANDISE

Lawn & Garden

DR walk behind and pull type brush mowers, several choices. Kahoka, Mo. 660-216-1809

Miscellaneous

John Deere 14T balers, both work. One has been rebuilt. Call John Davenport for more information, Coatsville. 660-933-4905.

Home style raised beef's/Heritage hogs. Nothing like home style flavor. Quarters/halves/w hole. "Price including processing/delivery, \$5.00 a pound. Also fresh fish. 800-807-9612.

BE AN EARLY BIRD! Place your ads before Monday and beat the rush!

fb farmbank

Free Lux Checking

- NO Minimum balance
- Cellphone protection
- Cyberscout
- AND MORE

Green City 660.951.8430
Milan 660.951.8432
Kirksville 660.951.8431

www.farmbank.com

BARN RESTORATION

Specializing in Barn & Pole Barn Repair and Restoration



See more restorations!

WAGLER BUILDERS
(641) 777-5000 • john@waglerbuilders.com @waglerbuilders

1968 Catalina 400 V8, 2 barrel. 54k+ original miles, mint condition, \$15,000/obo

New Holland 10 Arm Rake, \$2,000/obo

Vermeer 605 Super J Baler with monitor, twine wrap, \$3,200/obo

Located in Browning, MO - **816.499.2533**
LEAVE MESSAGE

Beilstein CAMPER SALES

CALL US NOW for the best prices...

28248 327th Ave.
LaGrange, MO • Hwy 61 South,
4 Miles South of LaGrange, MO

573-655-2254

LAST OF THE NEW 2022 MODELS DON'T MISS OUT ON THESE HUGE SALE PRICES!

#109947



Price \$25,995
Our Price **\$18,995**

2022 Keystone Springdale Single Axle 1760BH
Slide-Out, Light Weight

#801071



Price \$27,495
Our Price **\$22,495**

2022 Salem FSX 169RSK
Slide-Out, Easy To Tow

#106050



Price \$36,995
Our Price **\$27,495**

2022 Keystone Springdale 293RK
Super Slide Out, Rear Kitchen

#073674



Price \$38,995
Our Price **\$30,995**

2022 Salem FSX 280RTX Platinum
TOY HAULER, Slide-Out

#333620



Price \$46,995
Our Price **\$36,995**

2022 Salem 32BHDS
Two Slide-Outs, Bunk Beds

#090420



Price \$46,495
Our Price **\$37,995**

2022 Salem Hemisphere Hyper-Lyte 26BHHL
Top Of The Line, Double over Double Bunks

beilsteincampersales.com

NOW HIRING



Macon LPN or RN

Excellent pay, benefits, and work life balance
Monday-Friday 8-5 | No On-Call

Contact: ChaRae Wagner, HR Director
660-627-5757 x1018 cwagner@nmhcinc.org

Apply TODAY! NemoHealthCouncil.com/career

MCCOLLUM AUCTION

ONLINE ONLY Beginning JUNE 19
Ending JUNE 25 at 6 PM

30340 Hwy O Keytesville MO 65261

Due to health reasons we will sell the following at Public Auction. Tony and Becky McCollum have a wide variety of items from antiques and collectables to tools, trucks, tractors and farm equipment. This is an online auction only please go to missourilandandfarm.com for bidding information and pictures. CALL OR TEXT 660-788-3333 for more information. Viewing day Friday June 23 from 12 Noon to 6:30 PM PICK UP JUNE 26th 9 AM to 6 PM

TRUCKS, CARS, RANGER, TRAILERS: 2019 Ford F-150 STX, 39,740 miles, extended cab, 4x4, bed cover, back up camera, nice 1 owner truck; 1999 Ford F250, 4x4, pwr w/l, 105,400 miles, 1 owner, gooseneck ball, good farm truck; Polaris 570 ranger, runs but needs tune up 1 owner; 6 bale trailer w/spear; 20' gooseneck stock trailer; 20' gooseneck stock trailer for parts; 2 wheel trailers; 80s Ford 150 4x4 for parts; Chevy Car for parts; Ford Galaxy 500 for parts.

TRACTORS, DOZER, FARM EQUIPMENT: Case IH 5240 Tractor with CIH Loader shows 7633 hrs; IH 5088. CAH, shows 5850 hrs; Cat D6 cable dozer; IH H, wide front; Ferguson TO 20; Vermeer XL 555, 4826 bales on monitor; Round baler with net wrap and monitor; Vermeer 605 J baler; NH 351 Grinder; 3 bottom plow; 12 wheel disc; Rhino posthole digger; 3pt bale unroller; bale fork; 3 pt cult; 3 pt disc; 5' shredder; JD 2 row planter; 3 pt rotary hoe and more.

BOATS & MOTORS, FISHING RELATED, NETS: Roughneck 18' Jon boat 70hp Johnson, steering console, trailer; 16' Jon boat 25hp Evinrude, trailer; V-bottom boat with trailer and 15hp Evinrude; Elgin antique boat motor; Early Evinrude boat motor; 4? HP Mercury Motor; 2 trolling motors; hoop nets; other nets; fishing poles; hooks; weights; dip nets; more fishing.

TOOLS, FARM RELATED, LUMBER: Craftsman 6hp air comp (never used); two 2 ton creep feeders w/gates; feed troughs; vise on stand; stacks of lumber various sizes; steel post; wire; bale rings; Stihl chainsaws; lots of wrenches; pliers; hammers; tools of all kinds; welders; cutting torch; drills; jacks; ladders; nuts & bolts; hardware; chains; table saw; 12v seeder; Bass pro smoker; Craftsman and other air compressors; Alum ramps; rear tine tiller; fuel tanks; lots unlisted.

ANTIQUES, COLLECTABLES, KNIVES, HUNTING RELATED: 150 plus knives of all type, pocket knives, straight blades, hunting knives, filet knives; Left handed compound bow; bow cases; gun cases; Lee reloader; reloading items; oil lamps; old metal fire truck; train; hunting clothes; deer mounts; turkey mount; antlers of all types; snow shoes; marble chess board; crocks; crock bowls; toys; depression glass; milk bottles; cook books; old comic books; metal tonka truck; old bottles; glasses from the 70s; ton of German glasses; Pyrex bowls; vintage ice cream freezer; Coke collectables; Coke cooler; Ice cream freezer; pictures; stereo; 5 drawer chest; tons unlisted.

MOWERS, TRAPS, BUILDINGS, GRAIN BIN: Gravely Z60 PRO zero turn, 60" deck; JD X720 mower, 62" deck; 200+ traps all sizes and types; live traps; trap boxes; 2 buildings to be removed, 8x20 and 8x16; 5 ring grain bin, no floor, to be removed.

TERMS: Sellers or Auction Co not responsible for internet failure or issues involving internet, all statements made by Auction Co take precedence over all ads, 5 percent buyers premium will be added to purchase price, Cash or Good Check

TONY AND BECKY MCCOLLUM, SELLERS

MISSOURI LAND AND FARM AUCTIONS
Dave Atkinson 660-788-3333

FIND THE PERFECT PET FOR THE PERFECT PRICE IN THE PERFECT PLACE FOR DEALS

Find the stuff you want and sell the stuff you don't in the local newspaper classifieds.



Clip & Save • Clip & Save • Clip & Save • Clip & Save • Clip & Save

Miner Hill, LLC

Flea Market/Swap Meet Live Country Music Friday & Saturday Evenings

Free Public Admission

Lot Rentals Start at \$25
Lot rental per month or per season. Save one month by paying for the whole season in April. Electric/camper hookups available

Great Food

Come try out the New Miner Hill Nugget Cafe featuring our Smash Burgers along with a full Menu of Breakfast and Lunch

Contact info
(660) 375-1212

Minerhillc@yahoo.com
www.minerhill.com

1310 N Missouri Ave
Marceline, MO 64658

Antiques
Guns
Auto Parts
Baked Goods



Like us on facebook

www.facebook.com/minerhillllc

2023 Dates
June 23 - 24
July 28 - 29
Aug 25 - 26
Sept 22 - 23
Oct 27 - 28



Judd Motors

Call 660-457-3700
Hwy 63 North, Lancaster, MO

2014 Ford Edge, SEL,
AWD, V6, leather, sunroof,
134K, Black, **\$12,900**

2017 Chevy 1500 LT - crew cab, heated
leather, 5.3L, 4x4, bed liner, 132K,
white, very nice, **SOLD ONLY \$24,900**

2016 Ford Explorer XLT, 4wd, V6, 3 row, silver,
only 88k miles, very nice, **ONLY \$19,900**

Heavy Duty Tractor
Loader Skid Steer
adaptor, universal fit. **\$995**
(call for more details)

2011 Jeep Grand
Cherokee, Laredo, 4wd,
V6, leather, sunroof, dark
blue, **ONLY 111k, \$11,900**

2008 Chevy Trailblazer LT, 4wd, 6 cyl, leather, 205k
miles, maroon, very nice, **ONLY \$6995**



Cumberland Building Dealer

www.juddmotors.com

In Business Over 75 Years
Curly and Kevin Judd

WE HAVE YOUR DREAM CAR!



Keeping You on the Road

car-mart.com



We Offer:

- Peace of Mind Package
- Service Contract Plus
- Accident Protection Plan
- 100% Satisfaction
- Pay Your Way
- Low Down Payments
- Quality Used Vehicles
- Flexible Financing
- Hand Selected Vehicles
- Convenient Payment Options
- Start Your Approval Online
- Over 150 Locations
- 40 Years in Business
- We Buy Cars

660-956-4849 • 2015 North Baltimore • Kirksville



2013 CHEVY IMPALA
FWD, 6 Cyl., Silver



2009 INFINITI G37
AWD, 6 Cyl., Black



2011 CHEVY SILVERADO 1500
4WD, 8 Cyl., White



2016 KIA SORENTO
AWD, 6 Cyl., Maroon



2010 GMC ACADIA
AWD, 6 Cyl., Gray



2013 RAM 1500
4WD, 8 CYL., BLACK



2009 MERCURY MILAN
FWD, 4 Cyl., White



2010 TOYOTA PRIUS
FWD, 4 Cyl., Red



2016 CHEVY CRUZE
FWD, 4 Cyl., White



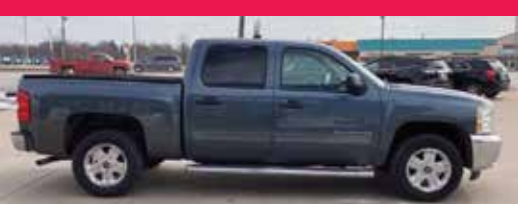
2015 KIA FORTE
FWD, 4 Cyl., Gray



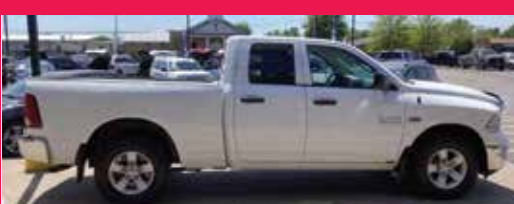
2019 HYUNDAI KONA
AWD, 4 Cyl, Gray



2011 GMC SIERRA 1500
4WD, 8 Cyl., 4 doors, Red



2012 SILVERADO 1500
4WD, 8 Cyl., Blue



2014 RAM 1500
4WD, 8 Cyl., White



2010 CHEVY IMPALA
FWD, 6 Cyl., White



2010 HYUNDAI ELANTRA
FWD, 4 Cyl., Silver



2015 GMC ACADIA
AWD, 6 Cyl., Maroon



2009 CHEVY TRAVERSE
FWD, 6 Cyl., Blue



Keeping You on the Road



KYLE JENNINGS
GENERAL MANAGER

689583jn

NEMO TRADER • Advertise with us TODAY! • Phone: 660.665.8500 • PO BOX 809 • 701 East LaHarpe St, Suite C, KIRKSVILLE, MO 63501

Miscellaneous

1999 Chevrolet Monte Carlo, 85,600 miles. New tires. Looks new. Bobby Jones, Livonia, Mo. 660-933-4759.

Fish for stocking ponds: catfish, grass carp, crappie, redear, bass, an fat-head minnows. Heindselman Family Farms. 660-341-5692.

NEMOTRADER.NET

Pets & Supplies

LABRADOR RETRIEVER PUPPIES: AKC registration available; puppy shots & wormers up-to-date. Two females and two males left. Stylish and smart; appointments required. Lay's Labs at LaBelle, MO 660-956-2482.

NEMO ADS SELL! Call for more information and specials. 660-665-8500.



MILLER AG

CAR PORTS & BUILDINGS
6' to 100' wide clear span • Up to 25' tall walls

WWW.MILLERAG.NET
ARBELA, MO • 660-341-0929 • JOE MILLER

Your Local
FARM SUPPLY SOURCE

NUTRITION • MEDICAL • FARM • PET • APPAREL

SEE US FOR YOUR
SHEEP & GOAT
EQUIPMENT NEEDS



Hometown Animal Health has provided quality products, expert knowledge, and friendly customer service to northeast Missouri and surrounding areas.

We are a full-service nutrition, medical, and farm supply source carrying complete lines of animal feed and supplies, farming equipment, agricultural parts, lawn and garden tools, work apparel, and much more!"

Hometown ANIMAL HEALTH

Feed • Medical • Farm & Pet Supplies • Footwear & More

website: hometownanimalhealth.com

660-465-2967

18743 US Hwy, 136 Memphis, MO 63555
"on Hwy 136 west of Memphis"

Monday-Friday 8pm to 5pm
Saturday 8am to 1pm

Brashear Real Estate & Personal Property Auction
Wed., June 28, 2023 at 4:00 p.m.
Beverly Irvin



Directions: 16063 Hazel Green Way, Brashear, Missouri. From US Highway 63 at Kirksville, follow Missouri Highway 11 East for approximately 8.1 miles, turn North on Hazel Green Way approximately 1.8 miles to the auction location. Watch for signs.

REAL ESTATE: This ranch style, home is sitting on 7.9 acres more or less has two-2 car garages on a full basement. The home has 4 bedrooms, 4 bathrooms on the main floor and 2 bedrooms, 2 bathrooms in the basement. The large, open floor plan includes a main suite, an updated kitchen, a laundry room and laminate flooring. It has a new gas hot water heater and 2 separate water and electricity meters. The property includes a 20' x 55' open face building and a stocked pond. With highly sought after small acreage, this property would make a wonderful country home for your family. It also has the added bonus of having the possibility of being easily divided into up to four separate living quarters. You must see the home to appreciate it. **Please call Scotty at 573-356-4405 to schedule your personal showing.**

DOWN PAYMENT: 10% of the contract purchase price will be due upon acceptance of the Sales Contract. Personal or Cashier's Checks will be accepted. This is "AS IS, WHERE IS" and is non-refundable. **CLOSING:** Closing shall be within 30 days of the auction date.

VEHICLE: Dodge Dakota with cab, 131,xxx miles, runs and drives.

HOUSEHOLD ITEMS: 3 sided lighted curio cabinet; oak China hutch; oak computer desk; microwave cart; floral loveseat and couch; Kenmore Elite large deep freeze; oak hall tree; 4' round plastic table; 6' folding table; maple style dining table with 6 chairs; maple hutch; GE refrigerator/freezer; White-Westinghouse electric range; Pro-form XP treadmill; Gold's Gym XR45 weight machine; two Frigidaire deep freezers; bar stools; GBC 7000 watt portable generator; 3 window air conditioning units; large Frigidaire deep freeze; dehumidifier; wheelbarrow

ANTIQUES & COLLECTIBLES: Howard Miller grandfather clock; Remington hex barrel .22 LR; self-standing quilt rack; antique steamer trunk; Pioneer Princess cook stove; lard press; Wonder Wood wood stove; various fruit jars; Low Boy cedar chest; chifforobe cabinet; #12 cast iron Dutch oven; Daisy butter churn

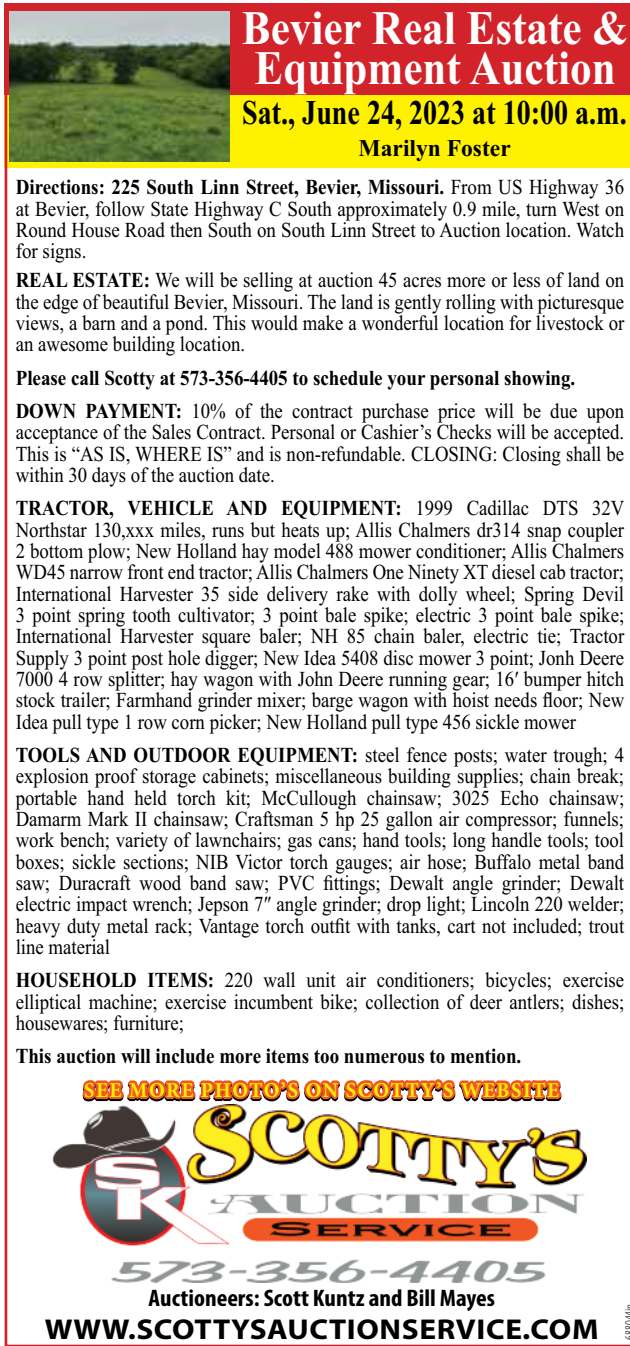
LIVESTOCK/ANIMAL SUPPLIES: incubator; National Bridal Shop 16" saddle; dog grooming table; rabbit cages and feeders; portable fencing; small live trap; numerous bird feeders

There will be more items at this auction too numerous to list.

SEE MORE PHOTO'S ON SCOTTY'S WEBSITE

SCOTTY'S AUCTION SERVICE
573-356-4405
Auctioneers: Scott Kuntz and Bill Mayes
WWW.SCOTTSAUCTIONSERVICE.COM

Bevier Real Estate & Equipment Auction
Sat., June 24, 2023 at 10:00 a.m.
Marilyn Foster



Directions: 225 South Linn Street, Bevier, Missouri. From US Highway 36 at Bevier, follow State Highway C South approximately 0.9 mile, turn West on Round House Road then South on South Linn Street to Auction location. Watch for signs.

REAL ESTATE: We will be selling at auction 45 acres more or less of land on the edge of beautiful Bevier, Missouri. The land is gently rolling with picturesque views, a barn and a pond. This would make a wonderful location for livestock or an awesome building location.

Please call Scotty at 573-356-4405 to schedule your personal showing.

DOWN PAYMENT: 10% of the contract purchase price will be due upon acceptance of the Sales Contract. Personal or Cashier's Checks will be accepted. This is "AS IS, WHERE IS" and is non-refundable. **CLOSING:** Closing shall be within 30 days of the auction date.

TRACTOR, VEHICLE AND EQUIPMENT: 1999 Cadillac DTS 32V Northstar 130,xxx miles, runs but heats up; Allis Chalmers dr314 snap coupler 2 bottom plow; New Holland hay model 488 mower conditioner; Allis Chalmers WD45 narrow front end tractor; Allis Chalmers One Ninety XT diesel cab tractor; International Harvester 35 side delivery rake with dolly wheel; Spring Devil 3 point spring tooth cultivator; 3 point bale spike; electric 3 point bale spike; International Harvester square baler; NH 85 chain baler, electric tie; Tractor Supply 3 point post hole digger; New Idea 5408 disc mower 3 point; John Deere 7000 4 row splitter; hay wagon with John Deere running gear; 16' bumper hitch stock trailer; Farmhand grinder mixer; barge wagon with hoist needs floor; New Idea pull type 1 row corn picker; New Holland pull type 456 sickle mower

TOOLS AND OUTDOOR EQUIPMENT: steel fence posts; water trough; 4 explosion proof storage cabinets; miscellaneous building supplies; chain break; portable hand held torch kit; McCullough chainsaw; 3025 Echo chainsaw; Damarm Mark II chainsaw; Craftsman 5 hp 25 gallon air compressor; funnels; work bench; variety of lawnchairs; gas cans; hand tools; long handle tools; tool boxes; sickle sections; NIB Victor torch gauges; air hose; Buffalo metal band saw; Duracraft wood band saw; PVC fittings; Dewalt angle grinder; Dewalt electric impact wrench; Japson 7" angle grinder; drop light; Lincoln 220 welder; heavy duty metal rack; Vantage torch outfit with tanks, cart not included; trout line material

HOUSEHOLD ITEMS: 220 wall unit air conditioners; bicycles; exercise elliptical machine; exercise incumbent bike; collection of deer antlers; dishes; housewares; furniture;

This auction will include more items too numerous to mention.

SEE MORE PHOTO'S ON SCOTTY'S WEBSITE

SCOTTY'S AUCTION SERVICE
573-356-4405
Auctioneers: Scott Kuntz and Bill Mayes
WWW.SCOTTSAUCTIONSERVICE.COM

Real Estate & Business Equipment Auction
Thursday, June 29, 2023 at 4:00 p.m.
Tom Westfall



Directions to Auction: 307 N. Elson, Kirksville, Missouri. From Business Highway 63 (South Baltimore Street), turn West on Illinois Street for approximately 0.7 miles then turn on North Elson Street to the auction location. Both pieces of property will be sold at this location. Watch for auction signs.

REAL ESTATE: We will be selling at auction a large commercial building located in downtown Kirksville and 25 acres more or less located on the western edge of town.

307 N. ELSON STREET: Commercial Building: 120' x 108' commercial building in downtown Kirksville, Missouri, currently rented by two separate businesses with other unrented space and more income potential with overhead garage doors.

TILLABLE ACREAGE ON WEST SHEPARD AVENUE: A total of 25 acres. 23 1/2 acres more or less located inside the city limits with an additional 2 acres more or less acres outside of the city limits, located west of Shepard Avenue.

Please contact Scotty at 573-356-4405 to schedule your personal showing

VEHICLES & EQUIPMENT: 1999 Cornpro cattle/enclosed trailer; 1999 Chevy Silverado crew cab, gas 454, four wheel drive, 200,000 + miles, one ton; Corvette wheels; cherry picker

TOOLS & EQUIPMENT: Soffit saw; Stihl concrete saw; Stihl SH85C gas leaf blower; Briggs & Stratton 2450 PSI gas power washer; fiberglass step ladders, 8', 12' and 14'; engine stand; David White trassit; Saw Zaws; long handled tools; Dewalt miter saw; several shop vacs; 3 sections scaffolding; 40' aluminum ladder; 30' ladder; Dewalt electric saw; routers; Stihl MS 170 chainsaw; portable concrete mixer; lots of miscellaneous hand tools; bench grinder; soffit material; Briggs & Stratton two man auger; safety harnesses; ladder stands; insulation blower Tapcon 10'6" aluminum sheet brake with accessories (sidewinder and cutoff wheel; two Sears radial arm saws; baker's scaffolding

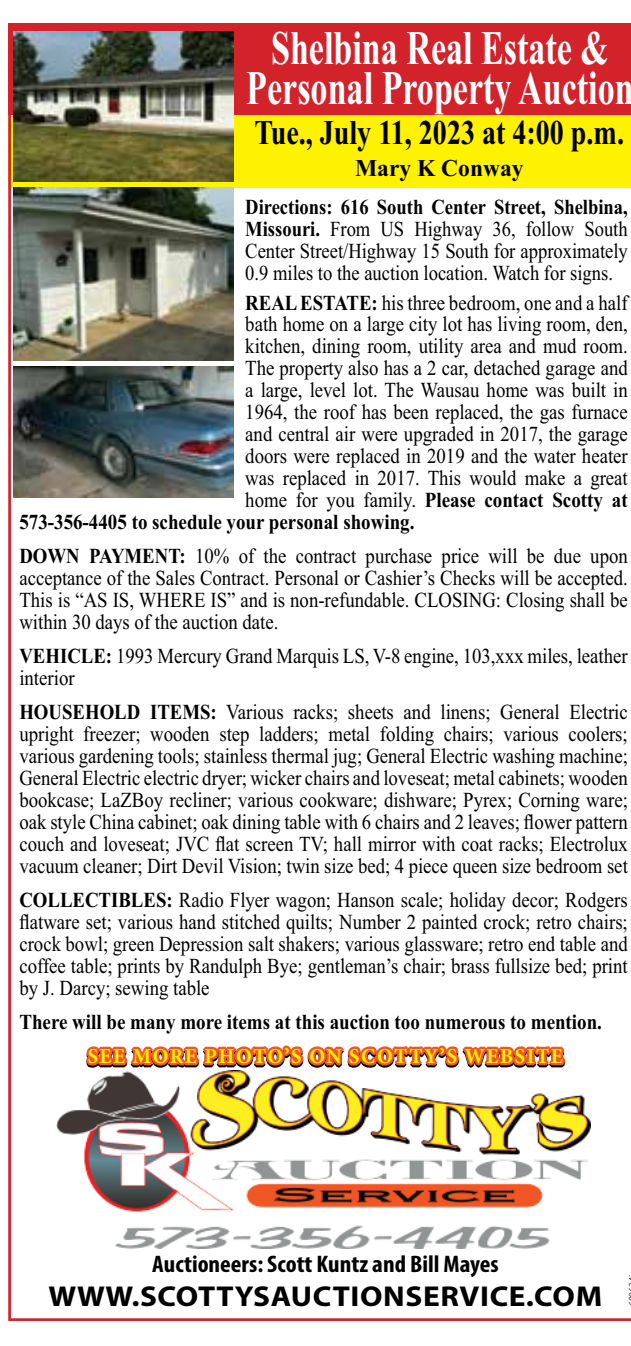
HOUSEHOLD MATERIALS: 2 new gas 40 gallon water heaters; 1 new electric 40 gallon water heater; working heating and air conditioning units; two rolls of tar paper; wood stove; new vanity; new closet doors; glass display cabinets; 10' basement jacks; antique coin operated scales; ice and snow guards; sewer tape; gutter guards; light fixtures

REAL ESTATE TERMS: 10% of the contact purchase price will be due upon acceptance of the Sales Contract. Personal or Cashier's Checks will be accepted. This is "AS IS, WHERE IS" and is non-refundable. **CLOSING:** Closing shall be within 30 days of the auctions date.

SEE MORE PHOTO'S ON SCOTTY'S WEBSITE

SCOTTY'S AUCTION SERVICE
573-356-4405
Auctioneers: Scott Kuntz and Bill Mayes
WWW.SCOTTSAUCTIONSERVICE.COM

Shelbina Real Estate & Personal Property Auction
Tue., July 11, 2023 at 4:00 p.m.
Mary K Conway



Directions: 616 South Center Street, Shelbina, Missouri. From US Highway 36, follow South Center Street/Highway 15 South for approximately 0.9 miles to the auction location. Watch for signs.

REAL ESTATE: his three bedroom, one and a half bath home on a large city lot has living room, den, kitchen, dining room, utility area and mud room. The property also has a 2 car, detached garage and a large, level lot. The Wausau home was built in 1964, the roof has been replaced, the gas furnace and central air were upgraded in 2017, the garage doors were replaced in 2019 and the water heater was replaced in 2017. This would make a great home for you family. **Please contact Scotty at 573-356-4405 to schedule your personal showing.**

DOWN PAYMENT: 10% of the contract purchase price will be due upon acceptance of the Sales Contract. Personal or Cashier's Checks will be accepted. This is "AS IS, WHERE IS" and is non-refundable. **CLOSING:** Closing shall be within 30 days of the auction date.

VEHICLE: 1993 Mercury Grand Marquis LS, V-8 engine, 103,xxx miles, leather interior

HOUSEHOLD ITEMS: Various racks; sheets and linens; General Electric upright freezer; wooden step ladders; metal folding chairs; various coolers; various gardening tools; stainless thermal jug; General Electric washing machine; General Electric electric dryer; wicker chairs and loveseat; metal cabinets; wooden bookcase; LaZBoy recliner; various cookware; dishware; Pyrex; Corning ware; oak style China cabinet; oak dining table with 6 chairs and 2 leaves; flower pattern couch and loveseat; JVC flat screen TV; hall mirror with coat racks; Electrolux vacuum cleaner; Dirt Devil Vision; twin size bed; 4 piece queen size bedroom set

COLLECTIBLES: Radio Flyer wagon; Hanson scale; holiday decor; Rodgers flatware set; various hand stitched quilts; Number 2 painted crock; retro chairs; crock bowl; green Depression salt shakers; various glassware; retro end table and coffee table; prints by Randolph Bye; gentleman's chair; brass fullsize bed; print by J. Darcy; sewing table

There will be many more items at this auction too numerous to mention.

SEE MORE PHOTO'S ON SCOTTY'S WEBSITE

SCOTTY'S AUCTION SERVICE
573-356-4405
Auctioneers: Scott Kuntz and Bill Mayes
WWW.SCOTTSAUCTIONSERVICE.COM



FIND THE RIGHT RIDE FOR THE RIGHT PRICE

Find the stuff you want.
Sell the stuff you don't.
Save time and money with the newspaper classifieds!

Small Animal Auction

Saturday,
June 24th, 2023

To be held at the

SCHACHTELE BARN - KEYTESVILLE, MO

From Hwy 24 at Keytesville, take Hwy 5 approx 4 miles to site w/ brown barn/green roof on the West side of the road, or from Hwy 36 at Marceline exit take Hwy 5 South, approx. 16 miles to site. Follow Auction signs!

Starting @ 11:30 am

We will start with Misc. Items Outside & Follow with Small Animals approximately 12:00 noon. Expecting Chickens, Geese, Ducks, Turkeys, Rabbits, Goats & Many Other Small Animals!

We are NOT accepting any HOGS! All Out of state Animals to be Sold MUST Have Proper Health Papers!

Lunch Served • **Call for More Details!**

Tony Schachtele 660-413-3250

We Appreciate All Consignments!

Terms Cash - good Check with Proper ID
We are **NOT** Responsible for Accidents to Man, Woman, Child, or Animal. We are **NOT** Responsible for Lost, Stolen, or Damaged Articles or Property.

1994 Honda Goldwing 1500 Trike

Low mileage, lots of chrome, trailer included.
Good Looking Bike!

660-234-5016

NEW - NEVER USED

Fender Guitar

MAKE OFFER Squire Telecaster Thinline

NEW

Bowtech Fanatic

MAKE OFFER 3.0XL 65%-80% Draw Length 28 1/2 - 32 1/2 50 - 60#

660-234-5016

Sports Equipment

Hunt in the dry Lazyman fiberglass deer blinds. Starting at \$1299.00. Four models to choose from. heindselmanfamilyfarms.com, 660-341-5692.

REAL ESTATE RENTALS

Office/Commercial Rentals

Looking for office space? Ideal for small beauty shop or professional office use. Located on major Kirksville street, good signage, low utilities and concrete parking. Lowest square foot rate in Kirksville. \$225.00 to \$700.00 a month. 660-341-0123

Wanted

Deer hunting lease wanted: 2 guys looking to lease land for 2023 deer season. 636-667-1074.

REAL ESTATE SALES

Mobile Homes For Sale

DISCOUNT NEW MOBILE HOME-we will beat any price on any home GUARANTEED, financing, 573-499-9993. columbiadis.counthomes.com.

TINY HOMES - Missouri franchise 573-881-3283

BASEMENT READY TRUE MODS--instock ready for delivery, 573-657-7040. chateauhomes.net

Mobile Homes For Sale

BASEMENT READY USED DOUBLE WIDE-3 bedroom, 2 bath, financing. Call for information 573-657-2176. amegamobilehomes.com

Recreational For Sale

Hunt in the dry Lazyman fiberglass deer blinds. Starting at \$1299.00. Four models to choose from. heindselmanfamilyfarms.com, 660-341-5692.

Wanted For Sale

Wanted to buy: older country farm house. Livable condition on 10-40 acres in Southeast Iowa or Northern Missouri. 641-799-6055.

Call us for all your advertising needs. 660-665-8500.

Premium Metal Roofing



AW Metal Inc.

Metal Roofing Headquarters

641-664-3990 • awmetal.net

NEMO Trader

The Meeting Place For Buyers And Sellers!

HAVE AN EVENT OR SPECIAL THAT YOU WANT TO PROMOTE. INSERTS WOULD BE A GREAT!

CALL OR EMAIL FOR YOUR CUSTOM QUOTE!

Call Cindy!

660-988-6830

chigh@nemotrader.net • 701 East Laharp Ste. C • Kirksville, Mo 63501

NEMO Kirksville Daily Express

We are a free publication serving a 20 county coverage area in Missouri, Iowa, and Illinois.

We distribute 11,000 copies each week to convenience stores, restaurants, and other businesses for readers to pick up.

NEW ISSUE EACH FRIDAY, ALSO AVAILABLE ONLINE AT NEMOTRADER.NET.

FREE NEW EDITION EVERY FRIDAY!
VOL. 30 • NO. 05 • FEBRUARY 17, 2023

NEMO Trader

THE NEMO TRADER
PO BOX 809 • KIRKSVILLE, MO 63501 • PHONE 660-665-8500
Web Site: nemotrader.net • Email: sales@nemotrader.net

A WEEKLY ADVERTISER SERVING ALL OF NORTHEAST MISSOURI AND THE SURROUNDING AREA

FARM & RANCH
ELIZABETH GREGORY
660.621.2136
missourihomeandfarm.com

Signature
Overhead Doors and Remodeling, LLC
660-785-0248
www.signatureremodelingkv.com

HEEMSBERGEN SWINE GENETICS
Show Pig Sale Sun, March 5th
Viewing @ 1:00 PM
Sale @ 2:30 PM
60+ Head Available: Cross & Yorks
24230 160th St., Bloomfield, IA 52537
RYAN HEEMSBERGEN 641-798-0231
LEHERY JACKSON 641-208-7120
Check out Heemsbergen Swine Genetics & LJ Showpigs on Facebook!
Join us for lunch during the viewing!

CUSTOM GRAZING
LARGE HERD
GOOD GRASS
HAPPY ANIMALS
SHELBYVILLE MO
CALL PETER
415.596.4000

KEIM LUMBER COMPANY LLC
COMPETITIVE PRICES • FREE ESTIMATES
• COMPLETE BUILDING PACKAGES
• WINDOWS AND DOORS
• INSULATION • DRYWALL
• DELIVERY
13625 St. Hwy 3 LaPlata, MO

CALL TODAY TO RESERVE YOUR SPOT

Insert Rates (11,000 pcs):	
8.5" x 11" single sheet	\$407
4-12 page tabloid	\$429



WE'VE GOT YOUR DREAM JOB ON A SILVER PLATTER

Keep up-to-date with dozens of top local job postings. Find a great permanent or temporary position in the classifieds!

PG FARMS FOR SALE

CLINTON COUNTY, IA

85 Acres, located within Camanche City limits. Hwy 30 frontage, potential development land, Asking \$8,000/A.

20 Acres, mostly tillable, great building site w/County taxes. N. of Elvira, IA. Asking \$11,000/A.

APPANOOSE COUNTY, IA

62 Acres MOL, 61.78 tillable, level/gently rolling, terraces, 1/4 mi. N of Hwy J46, SW of Centerville, IA

WHITESIDE COUNTY, IL

507 Acres, almost all tillable, level farm with many recent improvements, can be split. Located on Hwy. 30, W. of Morrison, IL. Asking \$10,000/A.

MONROE COUNTY, MO

325 Acres, 230 organic, tillable a., remainder is timber & pasture, w/waterfrontage. Close to Moberly, MO

SULLIVAN COUNTY, MO

359 Acres MOL of productive farm land, 281.95 tillable acres, 3 ponds & timber. In Sec. 8 & 9, Taylor Township, Sullivan Co., MO

79.2 Acres MOL of productive farm land, 72.59 tillable acres. Located in Sec. 30, Liberty Township, Sullivan Co., MO

441.6 Acres MOL of productive farm land, 399.66 tillable acres. Located in Sec. 19 & 20, Taylor Township, Sullivan Co., MO

38.83 Acres MOL of productive farm land, 38.38 tillable acres. Located in Sec. 28, Liberty Township, Sullivan Co., MO

DOUGLAS YEGGE - 563-320-9900
ALAN MCNEIL - 563-321-1125
 700 6th Ave., DeWitt, IA 52742
 Peoplescompany.com

26 boxes Flocchi 12 gauge,
 16 boxes 20. Over 1050 rounds
 shells all **\$400.00.**

6 boxes 22 Federal.
 Winchester 22 shells 500 count.
 3000 rounds, **\$225.00.**

Savage Axis compact,
 3-9-40 Weaver scope, 223.
 New **\$400.00.**

New G3-Taurus Pistol,
 2-15 round clips, **\$275.00.**

New Church Hill 12-gauge
 pump, 2 3/4 - 3 or handle any
 slug, **\$300.00.**

Panasonic 32" flat screen &
 Walmart Sanyo 40" no remotes.
\$75.00.

660-341-6147
 10 am - 10 pm calls.

2016 Chevy Silverado 2500
 HD work truck, 4x4, crew
 cab, 6.0 V8, power locks and
 windows, air, automatic, tow,
 bed liner, silver, 85,000 miles.
 Savings **\$31,700, 1 OWNER**

Brand New LT 265/75R16
\$159, LT 265/70R-17 \$165,
LT 275/65R-18 \$164, All (E)
 10 ply each. **Cash & Carry,**
Buy the weekly groceries
with the SAVINGS!!

Accelerators for 40 Years!

Kahoka, MO
660-727-3455 or
Daryl's Cell
217-257-1385
 call anytime

RECREATION

Motorcycles

WANTED TO BUY: Harley Davidson's, any year, any condition, cash money. Days 660-263-1356 or 660-537-0068

Wanted

WANTED TO BUY: Harley Davidson's, any year, any condition, cash money. Days 660-263-1356 or 660-537-0068

Need something? Let us help you. You can advertise that you are looking for a special item. Call 660-665-8500 for more information.

SERVICES

Electrical/Plumbing

One stop plumbing shop. Pex, pvc, tile, hydrants, toilets and much more. Contractor discount. Gingerich Stoves and Plumbing, LLC. 641-722-3540.

Home Services

Scott Huskey's Home Service is now providing 2 skirting systems for manufactured home. The insulated skirting saves on utilities and prevents freeze ups. The uninsulated is very strong and protects the underside. Both systems look great! Since 1972 573-696-3468.

There's a better way to get noticed.

Keep life simple. Take out an ad.

GOVERNMENT EQUIPMENT AUCTION

TUESDAY JUNE 27

750+ ITEMS SELL NO RESERVE!

DP0491 '17 Case CX210D excavator

LI9785 '18 CAT D6T XW dozer

ML9387 '16 John Deere 772GP motor grader

ML9431 '13 Tucker Sno-Cat 2000 trail groomer

LI9775 '14 CAT D6N LGP dozer

DP7852 '07 CAT 143H motor grader

II9117 '09 John Deere 6430 MFPWD tractor

INVENTORY INCLUDES: motor graders, excavators, dozers, dump trucks, semi trucks, flatbed pickup truck, skid steers, tractors, dump flatbed trucks, wheel loader, trail groomers, dump trailer, SUVs, bucket truck, pumper fire truck, passenger vehicles and more. *All items are sold "AS IS."* 10% buyers premium applies. **866.608.9283**

BID NOW! purplewave.com

NEMO TRADER BRAIN GAMES

CRYPTO FUN

Determine the code to reveal the answer!

Solve the code to discover words related to thyroid health. Each number corresponds to a letter. (Hint: 3=E)

A. 2 3 20 19
Clue: Below the head

B. 9 7 13 2 21
Clue: Secreting organ

C. 12 15 6 5 15 2 3 17
Clue: Substances in tissues and blood

D. 6 3 9 25 7 13 24 3
Clue: Control or maintain

-CROSSWORD-PUZZLE-

-JUNE- WEEK 3

-PUZZLE-SODOKU-

-JUNE- WEEK 3

Fun By The Numbers

Like puzzles? Then you'll love sudoku. This mind-bending puzzle will have you hooked from the moment you square off, so sharpen your pencil and put your sudoku savvy to the test!

WORD SEARCH

-JUNE- WEEK 3

Find the words hidden vertically, horizontally, diagonally, and backwards.

CLUES ACROSS

- Moved quickly
- Ocean temperature
- Scholarly book series
- Irregular
- Hairstyle
- Indigestion fixer
- Special therapy
- Mock
- Partner to Pa
- Strays
- Swedish currency (abbr.)
- Desired
- Soap product
- Traditional fishing boat
- No (Scottish)
- Spy organization
- Spiritual leader of a Jewish congregation
- Married woman
- Blood relation
- German river
- Genus of clams
- Parts of a movie
- Residue
- Ethnic group of Laos and Thailand
- Atomic #77
- Where wrestlers work
- Northeast
- Type of lettuce
- Abstain
- Communication between two
- One who administers medicine
- Sun up in New York
- Having eight

CLUES DOWN

- He played "Milton"
- Elsa's sister
- Digital wallet
- About backbone
- Type of weapon
- Turner, rock singer
- Microgram
- Hair product
- Health care pro
- Holy fire
- Military ID (abbr.)
- the ante
- Containing nitrogen
- Green citrus fruit
- Male parent
- Bring up
- Murdered
- Soviet Socialist Republic
- Supreme ruler Genghis
- Social media hand gesture
- Semitic Sun god
- Land
- Database management system
- Similar
- Nice to look at
- Covered with mud
- Simple dry fruit
- Title of respect
- Type of footwear
- Most lucid
- Exam
- Extinct flightless bird of New Zealand
- "Rule, Britannia" composer
- Small Eurasian deer
- "Within"
- Insures bank's depositors
- A pause for relaxation
- Social insect
- Expresses acidity

THYROID HEALTH WORD SEARCH

R O D S T I M U L A T I N G N F C V Y N
 N O C W W G R A V E S W R U D L H Y P M A
 U T S I G O L O N I R C O D U L E M E A C
 S N O I T A T I P L A P H D L S G N W U
 W U G S F M I W X Y E N F A I O O I R W
 N B W A S S I V S D S M V D G T O I X T T
 N T Y V W B R I L I E P I L B M T O H S
 F G R O W T H N D A T T O O F S V E R V S
 T S N P A B Y N A I R I B I D T R Y W R
 Y D O S E X C B E Y O H D A B C N H V U
 Y R V T R R O T H R I R V I H F T D A
 U E A E O L S T Y H V L Y O O O X I N F
 F E R T I M R P S L E O R H Y R O B A N C
 C L E S I E I I I H F M U T T R Y R V C
 G W M I P U G H E R O R V S Y O N H B H
 L L M Y D G T L S N A P E H N X P W T R
 A H H E U F U I E A O T T X E H Y D O
 N G S L O D N S P W H L E I O T E S H V N
 D P S R O H U R T H L E H O S U B S V I
 S H L N X C B H C C X D E G N N B D R C

WORDS

BIOPSY
 BUTTERFLY
 CHRONIC
 ENDOCRINOLOGIST
 GLANDS
 GOITER
 GRAVES
 GROWTH
 HASHIMOTOS
 HORMONES
 HURTHLE
 HYPERTHYROIDISM
 HYPOTHYROIDISM
 METABOLISM
 NERVOUSNESS
 NODULE
 PALPITATIONS
 PERSPIRATION
 PITUITARY
 SLUGGISH
 STIMULATING
 THYROID
 THYROIDITIS
 THYROXINE

Have a smart phone or tablet?

You can view current and past Nemo Trader issues online at www.nemotrader.net

Collectible Automobile & Petroliana Auction
Fri., July 7, 2023 at 10:00 a.m.
 Directions: 28251 US Highway 63 North, Macon, Missouri. From US Highway 36 travel approximately 2 miles North of Macon to Scotty's Auction Barn and Event Center on the West side of the highway. Watch for signs the day of the sale.
We are currently accepting consignments until Wednesday, JULY 5th at 2:00 p.m. Please contact Scotty to consign your items today!
 We will update the website as items are consigned. There will be many more items at this auction too numerous to mention.
SEE MORE PHOTOS ON SCOTTY'S WEBSITE

573-356-4405
 Auctioneers: Scott Kuntz and Bill Mayes
WWW.SCOTTYSAUCTIONSERVICE.COM

TRANSPORTATION
Parts & Services
 New/used parts "motors/tranny's" body parts matching your paint. "Vehicles, farm/construction equipment. Semi's "Warranted/Delivered. 800-807-9612
Trucks, 4x4's, SUV's
 1972 Chevy K20. Runs and Drives. Solid truck. Clean Title in Hand. Asking \$10,500.00 OBO. Located in Macon. Call 660-346-7484.
 Wanted to buy: 1967 - 1972 Chevy short bed pickup in any condition. 563-381-1611 or 563-210-5046.

Need something? Let us help you. You can advertise that you are looking for a special item. Call 660-665-8500 for more information.

Public Auction
2705 Main St Unionville Mo 63565 • June 24th at 10 am
OUTDOOR: Murray 38" riding mower, Troy Built and Stihl cultivators, 4500 Coleman generator, Cub Cadet weed whip, log chains, propane smoker, several lawn chairs, ladders, outdoor furniture, yard gate, nut and bolt bins, truck running boards, truck bed liner, wire cage, push mower, snow blower, lawn sweep, barrel pumps, yard tools **HOUSEHOLD:** vibrating chair, recliner, chairs, shrink wrap machine, microwaves, end tables, kitchen tables, office chairs, floor lamps, lamps, chest bench, high top table and chairs, linens, rugs, flat screen tv, Crosley electric stove, full bed, dressers, fans, sporting goods, vacuums, Sony stereo system, karaoke machine, crock pots, DVD and VHS tapes, ci skilllets, books, china picture frames, seasonal items, several boxes of all kinds of household and kitchen items several in nice totes with lids, empty totes with lids. **ANTIQUES:** fancy yard gate, Griswold grinder, wrenches, wood boxes, enamelware, trunks, dresser, cameras, buck saw coal Hod, galvanized items, barn lantern, bike, wood sled, Frankoma, etched glasses, garden cultivator, Horse Hames, bottles and jars, boiler, still searching boxes.
Sale is very large! Preview from 2 to 5 pm on June 23rd.
 Food and restrooms available. Check out pictures on the website at www.altiserauctionandappraisal.com.
 **SEE OUR FACEBOOK PAGE FOR PHOTOS**

AAA
ALTISER
 AUCTION & APPRAISAL
 KRIS ALTISER
 660-626-4960

NEMO TRADER • Advertise with us TODAY!
Phone: 660.665.8500 • PO BOX 809
701 East LaHarpe St, Suite C, KIRKSVILLE, MO 63501

 **2-DAY | TIMED ONLINE | NO-RESERVE**
DEALER & FARMER AUCTION
BIDDING CLOSURES: MONDAY & TUESDAY, JUNE 19TH & 20TH, 2023 STARTING AT 8:30 AM^{CT} EACH DAY

ALL ITEMS WILL BE LOCATED AT A SULLIVAN AUCTIONEERS' FACILITIES IN ILLINOIS, INDIANA OR MINNESOTA

OVER 1,000 PIECES OF EQUIPMENT & SUPPORT ITEMS SELLING ON THIS AUCTION!



'12 JD 8360RT track tractor, 5,815 hrs.



'17 JD 8345RT track tractor, 7,542 hrs.



'15 C-IH Steiger 580 QuadTrac tractor, 4,155 hrs.



'20 JD 6120M MFWD tractor w/loader, 117 hrs.



'13 JD 5083E MFWD tractor w/loader, 2,292 hrs.



'03 C-IH JX100U 2WD tract w/loader, 3,897 hrs.



'14 JD S670 2WD combine, 2,153 hrs.



'13 Case-IH 7230 4WD combine, 2,665 hrs.



'07 Case-IH 4WD combine, 3,929 hrs.



'20 Case-IH Early Riser 1250 24 row 30" planter



'10 Case-IH Early Riser 1250 24 row 30" planter



'12 JD R450 self-propelled windrower, 4,599 hrs.



'13 Cat M316D wheeled excavator, 3,409 hrs.



'11 New Holland L175 skid steer, 195 hrs.



'11 Case TR230 compact track loader, 1,641 hrs.



'14 Peterbilt 389 (Glider) T/A day cab semi, 538,202 mi.



'04 Mack Granite CV713 Quad/A Dump Truck, 542,791 mi.



'13 Ford F250 4x4 pickup, 84,183 mi.

MISSED YOUR CHANCE TO CONSIGN?
NEXT DEALER & FARMER AUCTION
MONDAY & TUESDAY, AUGUST 21ST & 22ND, 2023

Sullivan Auctioneers'
Hamilton, IL facility
 1066 US Hwy 136 E.,
 Hamilton, IL 62341
Maverick Woodside
(309) 313-2275
 Maverick@SullivanAuctioneers.com

Sullivan Auctioneers'
Huntington, IN facility
 11996 N Goshen Rd.,
 Huntington, IN 46750
Bryon Prible
(260) 820-0981
 Bryon.Prible@BigIron.com

Sullivan Auctioneers'
Bird Island, MN facility
 101 Hwy 212 Ave.,
 Bird Island, MN 55310
Kraig DeJong
(320) 894-6977
 Kraig.DeJong@BigIron.com



SCAN TO SEE FULL EQUIPMENT LISTING!

BigIron

(800) 937-3558
 WWW.BIGIRON.COM

(844) 847-2161
 WWW.SULLIVANAUCTIONEERS.COM
 License #444000107