

NEMO Trader

THE NEMO TRADER

PO BOX 809 • KIRKSVILLE, MO 63501 • PHONE 660-665-8500

Web Site: nemotrader.net • Email: sales@nemotrader.net



A WEEKLY ADVERTISER SERVING ALL OF NORTHEAST MISSOURI AND THE SURROUNDING AREA

exp REALTY
 ELIZABETH GREGORY
 Realtor
 MISSOURI HOME & FARM

Innovative Real Estate for YOU!
660.621.2136

Signature
 Overhead Doors & Remodeling, LLC
660-785-0248
www.signatureremodelingkv.com

Giving your home the attention it deserves!

LIME SPREADING SERVICE

Equipped with variable rate

PEAVLER TRUCKING LLC
 Alan Peavler, 660-216-0618 - Jared Peavler, 660-342-7685

THE FARM SHOP
 EDINA, MO
660-397-3550
farmshopinc.com

Meet the New **MX Series**

KUBOTA DIESEL TRACTOR

MX5400	Gear-Drive model	46.5 PTO HP
	HST model	46.5 PTO HP
MX6000	HST model	58.5 PTO HP

ANEW
 Realty Group, LLC

Kim Keyes, Broker/Owner
 660.665.3277 cell: 660.626.3920
 Commercial.Residential.Farm

AnewRealtyGroupLLC.com
 511 S. Baltimore St., Suite 8
 Kirksville, MO 63501

Hi Inside Metals & Building Supplies

- Full line of lumber in stock.
- Complete Building packages Available.
- Metal Custom Cut to Length.
- 26 to 29 Gauge • 20 Colors in Stock.
- Textured Metal In Stock.
- Custom Trim up to 20 Ft. Length.

We have CREWS available for all your building needs!

Office hours: Monday thru Friday 7am to 5pm • 21564 State Hwy J Brashear, Mo 63533



LET us **HELP** you **SELL** your **ITEMS!**

PLACE A CLASSIFIED IN THE **Nemo Trader TODAY!**

NEMO Trader Classified COUPON

2 Classified Ads for \$5.00

20 cents per word over 20 words
 For an additional \$1.00 run in the Kirksville Daily Express one time.
 For an additional \$2.00 run in the Saturday Kirksville Daily Express and Kirksville Crier one time each.
 Must be Mailed in or brought in along with payment
Picture Ads Not Included with Coupon!

Choose Classification

<input type="checkbox"/> Agri-Business	<input type="checkbox"/> Real Estate Rentals	<input type="checkbox"/> Yard Sales
<input type="checkbox"/> Announcements	<input type="checkbox"/> Real Estate Sales	<input type="checkbox"/> Auctions & Estate Sales
<input type="checkbox"/> Employment	<input type="checkbox"/> Recreation	
<input type="checkbox"/> Financial	<input type="checkbox"/> Services	
<input type="checkbox"/> Merchandise	<input type="checkbox"/> Transportation	

Ad No. 1 Each Box Represents a Word (20 words or less)

Ad No. 2 Each Box Represents a Word (20 words or less)

Name _____

Mailing Address _____

Phone Number * _____
 this is required*

PO Box 809 Kirksville, MO 63501 • 660-665-8500

Judd Motors

Call 660-457-3700
Hwy 63 North, Lancaster, MO

2014 Ford Edge, SEL, AWD, V6, leather, sunroof, 134K, Black, **\$12,900**

2016 Ford Explorer XLT, 4wd, V6, 3 row, silver, only 88k miles, very nice, **ONLY \$19,900**

Heavy Duty Tractor Loader Skid Steer adaptor, universal fit. **\$995** (call for more details)

2011 Jeep Grand Cherokee, Laredo, 4wd, V6, leather, sunroof, dark blue, **ONLY 111k, \$11,900**

2008 Chevy Trailblazer LT, 4wd, 6 cyl, leather, 205k miles, maroon, very nice, **ONLY \$6995**



Cumberland Building Dealer

www.juddmotors.com

In Business Over 75 Years
Curly and Kevin Judd

Have a smart phone or tablet?

You can view current and past Nemo Trader issues online at www.nemotrader.net



Stock Your Pond with the Best!
We stock most species
freshwater, game & baitfish.



Species Available: Largemouth bass, hybrid bluegill, bluegill, redear sunfish, black crappie, fathead minnow, walleye, muskie, catfish, golden shiners and more!



Gone Fishing

Time to gather up the little ones,
get their fishing poles
and go enjoy a day of fishing!

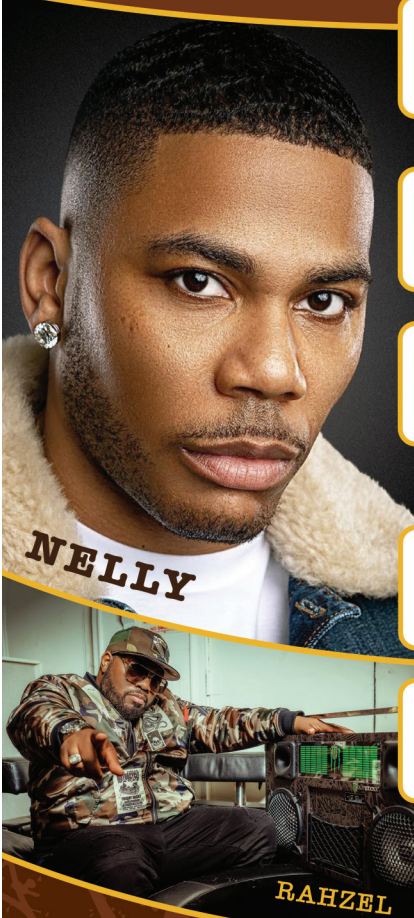


info@harrisonfishery.com • www.harrisonfishery.com

660-423-5482

Contact us for bulk price & delivery.

TICKETS ON SALE JUNE 27 MISSOURI STATE FAIR



AUG 10

TYLER HUBBARD
OF FLORIDA GEORGIA LINE
WITH PARMALEE
\$45, \$50

AUG 11

LAINIEY WILSON
WITH JACKSON DEAN
\$50, \$60

AUG 12

3 DOORS DOWN
AWAY FROM THE SUN
ANNIVERSARY TOUR
WITH CANDLEBOX
\$35, \$45

AUG 16

CORY ASBURY
AND GAIN
\$25, \$35

AUG 17

THE COUNTRY
COMEBACK TOUR
SHENANDOAH
BILLY DEAN
WADE HAYES
\$20, \$30

AUG 18

NELLY
WITH RAHZEL
\$40, \$50

AUG 19

RILEY GREEN
WITH RANDY HOUSER
\$45, \$50



BUY TICKETS AT MSTATEFAIR.COM,
ETIX.COM OR 800-514-ETIX (3849)

SECURITY POLICY: For guest safety, prior to entering concerts/events at the State Fair Grandstand, all guests will be screened by hand-held wands, or similar device. Weapons are not permitted. All bags are subject to search. Any prohibited item must be returned to the guest's vehicle.

Cattle

1/2 Hals-Blood Simmental and Angus bulls. For more information visit our website at www.foundationcattletcompany.com. Chillcothe, MO. 816-312-0194

Heifers, F1 Heartbrand Akaushi (red wagyu)/registered Red Angus, 400-600 lbs. Photos, dam EPDs available. Premium extra marbling, docile. (573)434-2510

Limousin and Limousin Composite Bulls For Sale, black and red all polled with performance data and EPD's. Potters Limousin 641-436-7153. No answer, please leave message.

NEMOTRADER.NET

AGRI-BUSINESS

Equipment & Supplies

1973 - 2670 Case, excellent tires. 660-375-3224.

Case 2-16 MTD plow, \$200.00. 660-485-6258.

Farmall 560. gas, short wide front, good 15.5x38, fast hitch, fenders, uses no oil. Owned almost 20 years, \$2400.00. 217-257-1385.

2012 Kubota M6040, 522 hours, 63 hp with loader, wheel weights and fluid, canopy, one remote, \$29,900.00. 573-288-4757.

7' bush hog 3 point, cat two, good condition. \$2900.00. Farm Star 3 point disk, built good, cat 1, \$1500.00. 573-288-4757.

Equipment & Supplies

New Holland #56 five bar hay rake with dolly wheels, \$1250.00. Morris heavy built 3 point, 3 prong bale spear, \$250.00. 217-257-1385.

Vermeer 505E baler, new belts, always shedded, field ready, nice baler, \$9500.00, or best offer. Brasher, Mo, 660-323-5629, 660-956-5612 anytime.

Woods #121, 10 foot pull type rotary cutter, 540 pto, cylinder, solid deck, shedded. \$2700.00. 217-257-1385.

Woods Cadet #84, Rotary Cutter 7', 3 pt., 540 PTO, slip clutch, solid deck, \$1050. Plastic mineral tubs for watering, \$5.00 each. 217-257-1385

**V6 Cat
NICE**

\$46,000
660-626-7483



Metals & Recycling

KIRKSVILLE, MO

660-665-8000

For current scrap prices call or visit our **Facebook Page**
victorymetalrecycling.com



★ METAL RECYCLING

RECYCLE YOUR SCRAP METAL WITH US! WE PAY CASH FOR: COPPER, ALUMINUM, STEEL, STAINLESS STEEL, APPLIANCES, E-SCRAP, BRASS, LEAD, RADIATORS, ALTERNATORS, BATTERIES, STARTERS, ELECTRIC MOTORS, APPLIANCES, & VEHICLES (TITLE & ID REQUIRED).

★ ROLL-OFF CONTAINER

10-20-30-40 CUBIC YARD DUMPSTERS

3602 INDUSTRIAL RD. • KIRKSVILLE, MO 63501

DJANESVMR@GMAIL.COM

WWW.VICTORYMETALRECYCLING.COM

Animal Housing, Hay Storage & Much More!!



**Skylight
Fabric Structures**

20749 State Highway VV

Ethel, MO 63539

660-486-3250

833-482-8862

PURE WATER SOLUTIONS
Tired of hard water and bad taste?
WE HAVE YOUR SOLUTION!

Call Dave
For Free Water Analysis
660-341-9007

Water Softeners
Reverse Osmosis
Whole House Filters

PO Box 827 • Kirksville, MO 63501

JARBOES CONSTRUCTION

DREAM HOUSE

We have the expertise and resources for all your construction needs!

- Electrical • Dry Wall
- Flooring • Roofing
- Plumbing • Additions

Ask how you can receive **\$50.00 off your project!**

660-342-9515 Follow us on Facebook

Have items to sell? Have too much stuff? Let us help you get the most for it!
Call 660-665-8500.

Please place your classified ads on the NEMO website. Our web address is nemotrader.net

KEIM LUMBER COMPANY LLC
COMPETITIVE PRICES • FREE ESTIMATES

- COMPLETE BUILDING PACKAGES
- WINDOWS AND DOORS
- INSULATION • DRYWALL
- DELIVERY

13625 St. Hwy 3 LaPlata, MO

Join us for our **20th summer in Macon, MO!**

MAPLES REPERTORY THEATRE

BIG RIVER: The Adventures of Huckleberry Finn
June 14–July 9, 2023

102 N Rubey Street Macon, MO 63552
www.maplesrep.com (660) 385-2924
Tickets: \$36 Students: \$25

DRIVING MISS DAISY
June 23–July 22, 2023

Maples Repertory Theatre for Youth and Families

Miss Electricity July 12, 15, 19, 20, 22
The Genuine Genie June 17, 21, 24, 28 July 1, 5
Once Upon a Shoe July 26, 29 August 2, 5

Performances on Wednesdays and Fridays at 10am
\$5 for children, \$10 for adults

Adair County Ag & Lawn LLC.
7 miles east of Greentop, MO

2017 Deere 331G
2280 hrs., Cab AC & Heat, selectable controls, ISO-H Pattern, 2 sp, High flow Hyd., Very Nice Condition
\$49,950

7030 Vermeer Disc Mower
9 FT., Field Ready, Used Last Year. **\$5,995**

Cell: 660-341-6267 • Shop: 660-397-9970

X Lincoln Street Green City, MO

NEW PRICE!

This 9 acre (m/L) piece of ground is the perfect place to build your dream home or continue using it as extra pasture for your livestock with a cattle water, cross fences and a small open shed it is ready or break it into lots and develop it. With sewer, water & natural gas all very close and a survey already completed the opportunities are limitless.

Call Charity Taylor today for your showing 660-341-4607
MLS#33033 \$62,500

CENTURY 21 Lifetime Realty Each Office Independently Owned And Operated
C21 Kirksville.com
1605 S. Baltimore Suite A Kirksville, MO 63501
660.665.5678

MILLER AG

JULY 4TH SALE 10% OFF!

CAR PORTS & BUILDINGS
6' to 100' wide clear span • Up to 25' tall walls
WWW.MILLERAG.NET
ARBELA, MO • 660-341-0929 • JOE MILLER

FRONTLINE FENCING LLC
660-956-2430 • Greentop, MO

* Arrowquip Cattle Handling Equipment
* Ranger Squeeze Chutes
* Heavy Duty Tubs and Crowding Alleys
* Calving Pens
* Heavy Duty Gates – Custom and Standard Sizes
* Steel Pipe Fencing – Corrals, Working Areas

660-956-2430 • Greentop, MO

fb farmbank
Free Lux Checking

- NO Minimum balance
- Cellphone protection
- Cyberscout
- AND MORE

Green City 660.951.8430
Milan 660.951.8432
Kirksville 660.951.8431

www.farmbank.com Member FDIC

NEMO ADS SELL! Call for more information and specials.
660-665-8500.

BE AN EARLY BIRD! Place your ads before Monday and beat the rush!

ATTENTION LAND OWNERS!!

Buyer of standing timber
Paying Cash Upfront!

Owner/Operator of Sawmill

- Buy/Cut Logs
- Certified
- Bonded
- Insured

Tri State Timber L.L.C.
353 1/2 Grand Ave. • Memphis, Mo 63555
660-341-4921 • 660-465-2975

NOW HIRING

Macon LPN or RN
Excellent pay, benefits, and work life balance
Monday-Friday 8-5 | No On-Call

Contact: ChaRae Wagner, HR Director
660-627-5757 x1018 cwagner@nmhcinc.org

Apply TODAY! NemoHealthCouncil.com/career

Your Local **FARM SUPPLY SOURCE**
NUTRITION • MEDICAL • FARM • PET • APPAREL

SEE US FOR YOUR **SHEEP & GOAT** EQUIPMENT NEEDS

Hometown Animal Health has provided quality products, expert knowledge, and friendly customer service to northeast Missouri and surrounding areas. We are a full-service nutrition, medical, and farm supply source carrying complete lines of animal feed and supplies, farming equipment, agricultural parts, lawn and garden tools, work apparel, and much more!

Hometown ANIMAL HEALTH
Feed • Medical • Farm & Pet Supplies • Footwear & More
website: hometownanimalhealth.com
660-465-2967
18743 US Hwy, 136 Memphis, MO 63555
"on Hwy 136 west of Memphis"

Monday-Friday 8pm to 5pm
Saturday 8am to 1pm

Beilstein CAMPER SALES
CALL US NOW for the best prices...
28248 327th Ave. LaGrange, MO • Hwy 61 South, 4 Miles South of LaGrange, MO
573-655-2254

#013188

Our Price \$15,995

2023 Salem FSX Limited Edition 174BHL
Bunks, Fireplace, Queen Bed

#801071

Our Price \$22,495

2022 Salem FSX 169RSK
NEW Slide-Out Bedroom, Dinette In Front

#090420

Our Price \$37,995

2022 Salem Hemisphere Hyper-Lyte 26BHLL
NEW Luxury, Super-Slide, Double over Double Bunks

#414026A

Our Price \$17,995

2018 Salem Cruise Lite 171RBXL
Rear Bath, Murphy Bed

#006678

Our Price \$3,495

2016 US Built Fox Trailers 18 TILT BED

#111994

Our Price \$7,195

2023 Darkhorse Cargo 7.5X12 7.5X12 TA NEW

beilsteincampersales.com

Farmers Market

Home grown tomatoes 3 pounds for \$7.25 or \$2.75/pound. Potatoes, onion, lettuce, zucchini and other vegetables. Schmucker Produce, 7 miles North of Kirksville to Ft. Madison Way, East 1/2 mile.

Hay/Feed/Seed

Straw, small square bales, \$5.00 per bale, Moberly, Mo. 660-651-0621.

Livestock

ABCA Border Collie puppies. 6 weeks old, black and white, 4 females, 3 Males. Up to date on shots and wormer. Both parents are working dogs, champion bloodlines. Ready to go. \$500 Call 660-988-1163

Fish for stocking ponds: catfish, grass carp, crappie, redear, bass, an fat-head minnows. Heindselman Family Farms. 660-341-5692.

Yearling standard bred filly and a seven year old gray mare. 660-342-5314.

EMPLOYMENT

Child/Elderly Care

Looking for off-grid home-stead nanny: childcare, help around house. Few morning per week. Pay based on experience. For interview 660-332-4026.

Transportation/Drivers

NEED YOUR CDL? We furnish the truck, trailer and teach all requirements for ELDT and skills test. We go with our truck to the State Highway Patrol for the test. Requires 2 days of in person training. MUCH CHEAPER WAY TO GET YOUR CDL Jefferson City, Willow Springs MO. Call (573)353-2853 for more information www.capitaltruckinstitute.com

MERCHANDISE

Lawn & Garden

DR walk behind and pull type brush mowers, several choices. Kahoka, Mo. 660-216-1809

NEMOTRADER.NET

Miscellaneous

Home style raised beef's/Heritage hogs. Nothing like home style flavor. Quarters/halves/w hole. "Price including processing/delivery, \$5.00 a pound. Also fresh fish. 800-807-9612.

Fish for stocking ponds: catfish, grass carp, crappie, redear, bass, an fat-head minnows. Heindselman Family Farms. 660-341-5692.

Wanted: A 4500 watt or bigger generator. Phone 660-280-0771.

Rummage Sale, June 30-July 1, 9-?, end 10th Street, Queen City. Furniture, tools, antiques, collectables, luggage, jewelry, much miscellaneous. Also city wide.

Straw, small square bales, \$5.00 per bale, Moberly, Mo. 660-651-0621.

Call us for all your advertising needs. 660-665-8500.

Miscellaneous

Vermeer 505E baler, new belts, always shedded, field ready, nice baler, \$9500.00, or best offer. Brasher, Mo, 660-323-5629, 660-956-5612 anytime.

Polled Hereford BULLS



GALEN KRIEG
217-743-5382
309-299-5695

Basco, IL

LANCASTER LUMBER INC.
Lancaster, MO.
1-800-424-5071
LAN-DOW BUILDINGS
www.lancasterlumber.com

NEW CAMBRIA LIVESTOCK AUCTION LLC
Phil & Stacey McBee - Owners
29262 State Hwy 149, Box 94, New Cambria, MO 63558
Special Calf & Yearling Sale
THURSDAY, JUNE 29TH, 2023
STARTING AT 11:00 AM
Office (660) 226-5222 • Phil McBee (660) 754-2148
Doug Lock (660) 641-3898 • Lavon Moore (660) 384-2008
Randy Nute (660) 651-5389 • Tyler Gratz (573)-690-7312
To view our latest market reports and cattle listings visit
Our website at: www.newcambrialivestock.com
We appreciate your business!!!!

LOLLI LIVESTOCK MKT, INC.
Special Calf & Yearling Sale
Tuesday, June 27 - 11am
80 Fancy Angus str 675lbs - pot load
60 Angus hfrs 575lbs
Home-raised, weaned 90 days, 3 rounds of shots.
90 blk/bwf str 750lbs (load) 40 blk/bwf hfr 650lbs
85 blk/bwf hfr 650lbs (load) 30 blk/bwf hfr 650lbs
80 blk/bwf hfr 650-700lbs (load) 30 blk/bwf str/hfr 5-600lbs
75 blk/bwf str 750lbs (load) 25 blk/bwf str 500lbs
65 blk/bwf str/hfr 4-600lbs 20 blk/bwf str/hfr 4-600lbs
62 blk/bwf str/hfr 5-700lbs 20 blk/bwf str/hfr 5-700lbs
60 blk/bwf hfr 575lbs 20 blk/bwf str/hfr 450-550lbs
50 blk/bwf str/hfr 5-600lbs 15 blk/bwf str/hfr 5-600lbs
48 blk/bwf str/hfr 6-700lbs 15 blk/bwf str/hfr 5-700lbs
45 blk/bwf str/hfr 4-700lbs 5 blk/bwf str/hfr 5-600lbs
This is only a partial listing, many more by sale date.
Cafe Open Lollo Livestock Market, Inc. Cafe Open
704 Main st * Macon, MO * 660-385-2516 www.lollibros.com
Frankie 660-651-4040 * Tim 660-651-3496 * Joseph 660-346-9711
Jordan 660-346-0410 * Cody 660-676-9392 Cattle accepted on Sundays

Edina Livestock Sales
Edina, Missouri
Friday, June 23rd
Special Feeder Calf Sale
Friday, June 30th
Special Cow Sale
To Consign For Any or All Sales or For
Information Call:
Owner - Kevin Strange • Cell: 660-341-9974
Ryan Strange • Cell: 660-341-9721
Sale Barn: 660-397-9999
Field Reps:
Bill Tom Hall 660-342-5420 Mike Bronestine 660-341-9965
Jason Bichsel 660-216-0373 John Powell 660-341-1717

LAN-DOW BUILDINGS
"We Build To Suit Your Needs"
"Custom Built"
Pole Barns • Garages • Utility Buildings
"H" Don or Dick Middleton
Memphis Lumber Co.
1-800-337-5858 • 660-465-8595
Fax: 660-465-8596

LIONS GUN SHOW
Buy-Sell-Trade
Lion's Club Building (PC Fairgrounds)
UNIONVILLE, MO
Saturday, June 24th at 8AM
\$\$\$ CASH FOR GUNS \$\$
\$5.00 ADMISSION
Proceeds go to Lions Club
A GUN SHOW WITH LOTS OF GUNS!!
VENDORS WANTED
TABLES \$10
CALL JIM to Reserve
660-355-GUNS (4867)
AWESOME BREAKFAST & LUNCH SERVED!

Kirksville, Missouri
KIRKSVILLE LIVESTOCK LLC
24295 Benton Road * P O Box 242 * Kirksville, MO 63501
www.kirksvillelivestock.com
SPECIAL BRED HEIFER, COW & BULL SALES 6:00 P.M.
SPECIAL CATTLE SALES 11:00 A.M.
SPECIAL SHEEP SALES 10:00 A.M.
2023 SALE DATES
July, 2023
• Monday, July 3 - **NO SALE** Celebrate America's Independence
• Friday, July 7 - Special Breeding Stock Cattle Sale, 6:00 p.m.
• Monday, July 10 - Special Hog, Sheep, & Goat Sale, 10:00 a.m.
• Monday, July 17 - Special Feeder Cattle Sale, 11:00 a.m.
• Monday, July 24 - Regular Cattle Sale, 11:00 a.m.
• Monday, July 31 - Special Feeder Cattle Sale, 11:00 a.m.
Check website for updated listings: www.kirksvillelivestock.com
We are open on Sunday to Receive Your Livestock
"Your Business is Very Much Appreciated"
"Proud to Serve Area Livestock Producers"
For more information or Someone to
Phone for information:
Patty Foster, Office Manager - 660-665-9804
Chuck Ambrosia - 660-342-3530 - Luke West - 620-215-5770
Mark Herbold - 515-720-8667 - Al Ashmead - 660-216-8730
Doug Fleshman - 660-626-7148 - Daniel Smith - 660-341-8396
Jeremy Jarman - 660-341-9879 - Caleb Randolph - 641-919-8539
Karol Kirkpatrick - 641-777-3403

There's a better way to get noticed.
Keep life simple. Take out an ad.

WE GOT YOUR NEEDS COVERED!
FARM TARPS **TRUCK TARPS**
HOOP BUILDING COVERS

Troyer TARP MFG.
660-486-3301
20264 STATE HWY. VV • ETHEL, MO 63539

Have items to sell? Have too much stuff? Let us help you get the most for it! Call 660-665-8500.

Purebred Angus Bulls For Sale
• SyGen Rampage 7408 • Easy Calving
• BSE and TRICH Tested • Solid Growth EPD's
• Great Shape and Disposition • HD 50K
• 5 Years Old
• Registered & Commercial Bulls, Full BSE Exam
• TRICH tested
• Various Ages
• Excellent Condition
• Raised Properly for longevity and good feet
• Athletic & Good Dispositions
John Davenport, Coatsville, MO • 660-933-4905

Scrubby Duds Laundromat
Large capacity coin machines
Your laundry never takes a break & neither do our machines!
OPEN 7 DAYS A WEEK
24 HOURS A DAY
311 S. Baltimore Kirksville, MO 63501 660-349-8943 Bob & Paulette Thompson

WE HAVE YOUR DREAM CAR!



Keeping You on the Road

car-mart.com



We Offer:

- Peace of Mind Package
- Service Contract Plus
- Accident Protection Plan
- 100% Satisfaction
- Pay Your Way
- Low Down Payments
- Quality Used Vehicles
- Flexible Financing
- Hand Selected Vehicles
- Convenient Payment Options
- Start Your Approval Online
- Over 150 Locations
- 40 Years in Business
- We Buy Cars

660-956-4849 • 2015 North Baltimore • Kirksville



2016 BUICK ENCLAVE
AWD, 6 Cyl., Black



2013 FORD F150
4WD, 8 Cyl., White



2015 KIA FORTE
FWD, 4 Cyl., Gray



2014 HYUNDAI ELANTRA
FWD, 4 Cyl., Silver



2015 LINCOLN MKT
AWD, 6 Cyl., Black



2014 CHEVY SILVERADO
RWD, 6 CYL., WHITE



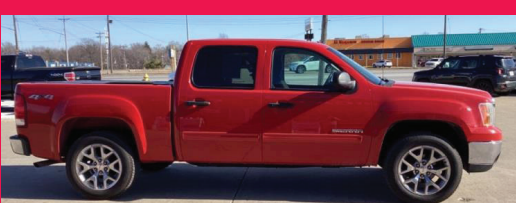
2014 RAM 1500
4WD, 8 Cyl., White



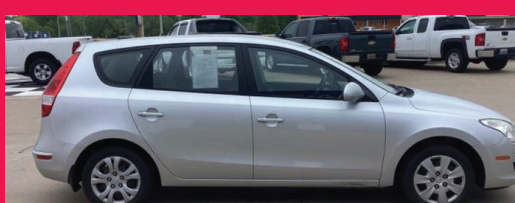
2015 GMC ACADIA
AWD, 6 Cyl., Maroon



2012 SILVERADO 1500
4WD, 8 Cyl., Blue



2011 GMC SIERRA 1500
4WD, 8 Cyl., 4 doors, Red



2010 HYUNDAI ELANTRA
FWD, 4 Cyl., Silver



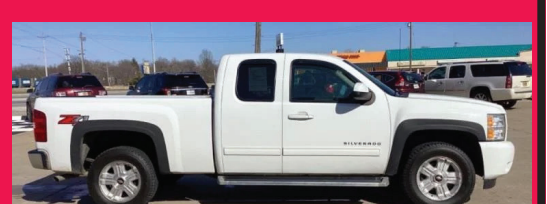
2013 CHEVY IMPALA
FWD, 6 Cyl., Silver



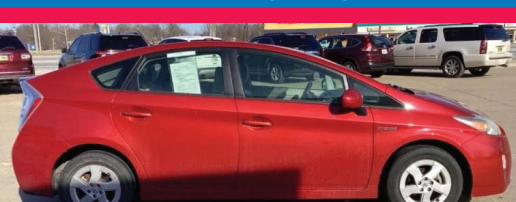
2019 HYUNDAI KONA
AWD, 4 Cyl, Gray



2009 MERCURY MILAN
FWD, 4 Cyl., White



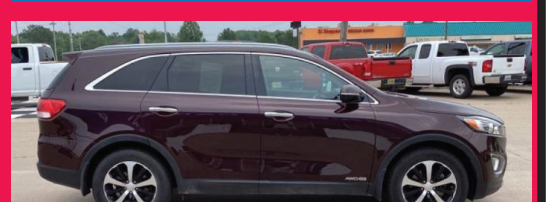
2011 CHEVY SILVERADO 1500
4WD, 8 Cyl., White



2010 TOYOTA PRIUS
FWD, 4 Cyl., Red



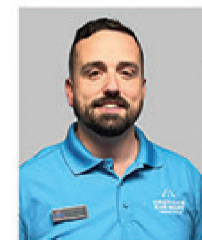
2016 CHEVY CRUZE
FWD, 4 Cyl., White



2016 KIA SORENTO
AWD, 6 Cyl., Maroon



Keeping You on the Road



KYLE JENNINGS
GENERAL MANAGER

690291jn

NEMO Trader

NOW OFFERS INSERTS!

Have an event or special coming up? This is a great way to get the word out. Insert your flyer or brochure. Our circulation is 11,000 with a 21 county coverage area in Missouri, Iowa and Illinois



For more info
call **660-665-8500**
or email: **sales@nemotrader.net**

682831jn

ATTENTION HVAC CONTRACTORS

Capnemo is seeking qualified HVAC contractors to bid for the Weatherization Program serving Adair, Clark, Knox, Schuyler, & Scotland counties.

Info and documents are available at:
www.capnemo.org
 or 215 N. Elson Kirksville, MO 63501
 660.665.9855
 Accepting bids until COB June 29th, 2023



"We specialize in barbed wire and continuous panel fencing and do excavation and bulldozing part time."

TRI-RIVERS FENCING, LLC
LANCASTER, MISSOURI

SPENCER GREENSTREET 660-342-8001
 TRISTAN CLINE 660-341-3029

TIMBER MANAGEMENT.

Purchasing Walnut, Oak, Maple & Other Species

WE PAY BEFORE WE CUT

BONDED & INSURED *Est. 1968*

641-895-8209



FIND THE PERFECT PIECE FOR THE PERFECT PRICE

Find the stuff you want and sell the stuff you don't with your local newspaper classifieds.

RAMER TRUCK SALES

 <p>2015 Ford F350 King Ranch, 6.7 diesel rebuilt title 214k miles \$29,500</p>	 <p>2021 Ford F250 STX, 7.3L gas rebuilt title 10k miles \$44,500</p>	 <p>2014 Ford F150 XL, 5.0 rebuilt title 124k, white. \$14,900</p>
 <p>2011 Ford XLT, 253K, 6.7, Rebuilt Title. \$13,500</p>	 <p>2012 Ford F350 King Ranch, 142K, Rebuilt Title, 6.7. \$29,500</p>	<p>Gorin, Missouri Monday-Saturday 8am-6pm www.ramertrucksales.com HOME: 660.282.1002 CELL: 660.341.6140 "NO SUNDAY CALLS!" DeWeeze</p>

Pets & Supplies

Farm kittens! Ready now-8 weeks 5/24, 3 left. All black, co-exist with dogs, excellent mouser, very social. Call 660-332-4026.

LABRADOR RETRIEVER PUPPIES: AKC registration available; puppy shots & wormers up-to-date. Two females and two males left. Stylish and smart; appointments required. Lay's Labs at LaBelle, MO 660-956-2482.

Border Collie/St Bernard puppies for sale! Really nice farm and companion dogs. 8 weeks 6/29. Shots, wormed, vet checked. Dame registered Border Collie. \$100.00. 660-332-4026.

AKC Welch Corgi's, 1 black tri-colored female, 1 red and white female and 1 red and white male. \$100.00 each 660-413-2128.

HAVE A PET OR PUPPIES TO SELL? Call us. You can even pay over the phone. 660-665-8500.

Premium Metal Roofing



A W Metal Inc.
Metal Roofing Headquarters

641-664-3990 • awmetal.net

Sports Equipment

Hunt in the dry Lazyman fiberglass deer blinds. Starting at \$1299.00. Four models to choose from. heindselmanfamilyfarms.com, 660-341-5692.

Wanted
 Wanted: A 4500 watt or bigger generator. Phone 660-280-0771.
 Looking for help around farm/homestead. Odds/ends, morning stuff, repair, low-tech plumbing. pay based on experience and skill. For interview. 660-332-4026.

REAL ESTATE RENTALS
Office/Commercial Rentals
 Looking for office space? Ideal for small beauty shop or professional office use. Located on major Kirksville street, good single, low utilities and concrete parking. Lowest square foot rate in Kirksville. \$225.00 to \$700.00 a month. 660-341-0123

REAL ESTATE SALES
Mobile Homes For Sale
 DISCOUNT NEW MOBILE HOME-we will beat any price on any home GUARANTEED, financing, 573-499-9993. columbiadiscounthomes.com.

FOR SALE
 All Sired Angus Bulls,
 14 & 18 Months Old.
Harold Trump
660-341-5730

Mobile Homes For Sale

TINY HOMES - Missouri franchise 573-881-3283

BASEMENT READY TRUE MODS--instock ready for delivery, 573-657-7040. chateauhomes.net

BASEMENT READY USED DOUBLE WIDE-3 bedroom, 2 bath, financing. Call for information 573-657-2176. amegamobilehomes.com

Recreational For Sale
 Hunt in the dry Lazyman fiberglass deer blinds. Starting at \$1299.00. Four models to choose from. heindselmanfamilyfarms.com, 660-341-5692.

Wanted For Sale
 Wanted to buy: older country farm house. Livable condition on 10-40 acres in Southeast Iowa or Northern Missouri. 641-799-6055.

RECREATION

Motorcycles

WANTED TO BUY: Harley Davidson's, any year, any condition, cash money. Days 660-263-1356 or 660-537-0068

Need something? Let us help you. You can advertise that you are looking for a special item. Call 660-665-8500 for more information.

RECREATION

Wanted
 WANTED TO BUY: Harley Davidson's, any year, any condition, cash money. Days 660-263-1356 or 660-537-0068

SERVICES

Electrical/Plumbing

One stop plumbing shop. Pex, pvc, tile, hydrants, toilets and much more. Contractor discount. Gingerich Stoves and Plumbing, LLC. 641-722-3540.

Home Services

Scott Huskey's Home Service is now providing 2 skirting systems for manufactured home. The insulated skirting saves on utilities and prevents freeze ups. The uninsulated is very strong and protects the underside. Both systems look great! Since 1972 573-696-3468.

Check with us for all your stove and chimney needs. Over 50 stoves in stock. We install. Gingerich stoves. 641-722-3540.

Lawn/Garden/Landscape

New 3 pt. tillers, heavy duty, gear driven, 7' to 12' starting at \$4,150. 660-874-4455.

Golden Grain Bins-Summer Savings

Grain Bins	Floors w/12" Supp. & Flashing
18'x18' 4,195bu. \$ 7,029	18'....\$1,962 30'....\$ 5,476
27'x21' 11,265bu. \$14,108	21'....\$2,682 36'....\$ 7,801
42'x24' 32,245bu. \$32,886	27'....\$4,474 42'....\$10,623

Golden Grain GMLS Industries, Inc.
 PH: 660-699-2179 or 620-983-2136
www.gmlsindustries.com

BARN RESTORATION

Specializing in Barn & Pole Barn Repair and Restoration



WAGLER BUILDERS
 (641) 777-5000 • john@waglerbuilders.com @waglerbuilders

CELEBRATIONS! PARTY RENTAL

KIRKSVILLE, MO

FOR RENT

- Tables & Chairs
- Tents • Bounce House
- Cotton Candy Machine
- & More!

660-626-5162 or 660-665-9380

JAGUAR LUMBER

Attn: Land Owners

Buyer of Timber
 *All species also Select yard Trees/Logs over 40" diameter,
 *Trees are selectively cut to insure optimal Forest Regeneration.

Certified & Bonded | Lavon Gingerich 641-664-2080

STOMBAUGH ASPHALT

RESIDENTIAL ★ COMMERCIAL

- ★ PAVING
- ★ CHIP & SEAL
- ★ SEALING
- ★ PARKING LOT STRIPING

573-406-8706

Show Me Plumbing Services

- General Mini Excavation & Skid Steer Work
- Livestock Watering
- Waterlines & Sewer Systems
- Residential Services & General Plumbing
- Utility Trenching

Stan Schrock 660-988-1163
 Greentop, MO 660-766-2636

ANTIOCH REPAIR

SPECIALIZING in

- Skid loaders
- Ag Equipment
- Construction Equipment

Call us for all your attachment needs
Ethan Zimmerman • 660-299-0808

The meeting Place for Buyers and Sellers!!

NEMO Trader

660-665-8500 or email: sales@nemotrader.net

SHOP LOCAL - BUY LOCAL - ENJOY LOCAL

BUY LOCAL Invest in your community

TRANSPORTATION

Parts & Services

New/used parts "motors/tranny's" body parts matching your paint. "Vehicles, farm/construction equipment. Semi's "Warranted/Delivered. 800-807-9612

Trucks, 4x4's, SUV's

1967 C50 Truck. 660-375-3224.

1978 3/4 ton Chevy, 4 speed. 660-375-3224.

2021 Chevy 1500 Trailboss, crewcab, 6.2L, 16000 miles. One owner, no lien. \$52,000 Call Jeff for details 660-346-9668

1972 Chevy K20. Runs and Drives. Solid truck. Clean Title in Hand. Asking \$10,500.00 OBO. Located in Macon. Call 660-346-7484.

Wanted to buy: 1967 - 1972 Chevy short bed pickup to restore, in any condition. 563-381-1611 or 563-210-5046.

YARD SALES

Garage Sale

Rummage Sale, June 30-July 1, 9-?, end 10th Street, Queen City. Furniture, tools, antiques, collectables, luggage, jewelry, much miscellaneous. Also city wide.

NEED TO SELL YOUR HOUSE OR PROPERTY? Get the best coverage around. Call the NEMO and our helpful representatives will assist you in creating your ad. You can even pay over the phone. Call 660-665-8500 for more information.

2016 Chevy Silverado 2500 HD work truck, 4x4, crew cab, 6.0 V8, power locks and windows, air, automatic, tow, bed liner, silver, 85,000 miles. Savings \$31,700, 1 OWNER

Brand New LT 265/75R16 \$159, LT 265/70R-17 \$165, LT 275/65R-18 \$164, All (E) 10 ply each. Cash & Carry, Buy the weekly groceries with the SAVINGS!!

Accelerators for 49 Years!

Kahoka, MO
660-727-3455 or
Daryl's Cell
217-257-1385
call anytime

Macon Real Estate, Household & Collectible Auction

Thur., July 13, 2023 at 4:00 p.m.

Ethelyn Cox



Directions: 107 Jackson Street, Macon, Missouri. From US Highway in Macon, follow Pine Street West for approximately 0.2 miles, turn left on Jackson Street to the auction location. Watch for signs.

REAL ESTATE: Conveniently located on a corner lot, this 3-4 bedroom, 1 bath home has a large living room, kitchen/dining room and pantry. The home also has a detached one car garage. The home does need work and would make a great starter home or investment property. Please call Scotty at 573-356-4405 to schedule your personal showing.

DOWN PAYMENT: 10% of the contract purchase price will be due upon acceptance of the Sales Contract. Personal or Cashier's Checks will be accepted. This is "AS IS, WHERE IS" and is non-refundable. CLOSING: Closing shall be within 30 days of the auction date.

ANTIQUES AND COLLECTIBLES: carved wood bear; carved wood Santa Claus; Wagner cast iron skillet; cast iron cookware; metal and Formica retro table; carved wood wolf; carved wood witch; Perfection oil heater; ceramic statuary and gnomes; collector ceramic automobile music boxes; retro hanging lamp; brass quail; dog and cat statuary; nail kegs; Magnavox retro console stereo, 8 track, record player and radio; leather bound, wooden rocker; wooden rocker chair; milk can; DVD and VHS tapes; wooden buffet; antique oak wardrobe; porcelain dolls; wooden chest; antique steamer trunk; section of lawyer's bookcase; antique suitcases; antique 2 door cabinet; antique steamer trunk; antique foot locker; miscellaneous seasonal decorations; lava lamp; Roadmaster exercise bike; shoe forms; shoe shine kit; antique chalkboard; Hop Along Cassidy holster with toy gun; military holster; leather holster; hat collection; Jim Jr. antique camera; 1936 Remington Arms-Union Metallic Cartridge Co. calendar; December 1973-December 1974 Coca-Cola calendar; Elvis memorabilia

HOUSEHOLD ITEMS: metal cabinet; Amana gas oven/range; Whirlpool refrigerator freezer; Hamilton Beach microwave; Bissel power force bagless vacuum; miscellaneous housewares; two microwave carts; Sentry Safe; Fire Fyter safe; GE chest type freezer; bookshelves; couches; chairs; end tables; rolling chairs; floor lamps; full size bed; dressers; full size bed; chest of drawers; metal locking cabinet;

There will be many more items at this auction too numerous to mention.



Art Collection Auction, Online Only

Ethelyn Cox

ONLINE BIDDING
BEGINS TUE., JUNE 13, 2023 AT 8:00 AM
ENDS WED., JULY 12, 2023 AT 6:00 PM
<https://hibid.com/company/69979/scottys-auction-service>

Sunol Alvar print - Alvar 1981 En Sortant du Rouge; Edward Sokal Brooklyn Backyards print 85/250; Church print unsigned, framed; Sunol Alvar embossed lithograph Les Rambles II; Sunol Alvar embossed lithograph; Sunol Alvar embossed lithograph; Sunol Alvar embossed lithograph from the Barcelona; Sunol Alvar embossed lithograph

PREVIEW - MONDAY, JULY 10, 2023 FROM 4 PM - 6 PM at Scotty's Auction Barn, 28251 US Highway 63 North, Macon, Missouri. From US Highway 36 travel approximately 2 miles North of Macon to Scotty's Auction Barn and Event Center on the West side of the highway.

ONLINE AUCTION TERMS AND CONDITIONS ON WEBSITE.

SEE MORE PHOTOS ON SCOTTY'S WEBSITE

573-356-4405
Auctioneers: Scott Kuntz and Bill Mayes
WWW.SCOTTYSAUCTIONSERVICE.COM



1968 Catalina 400 V8, 2 barrel. 54k+ original miles, mint condition, \$15,000/obo



New Holland 10 Arm Rake, \$2,000/obo



Vermeer 605 Super J Baler with monitor, twine wrap, \$3,200/obo

Located in Browning, MO - **816.499.2533**
LEAVE MESSAGE

Need something? Let us help you. You can advertise that you are looking for a special item. Call 660-665-8500 for more information.

FARMS FOR SALE

CLINTON COUNTY, IA
85 Acres, located within Camanche City limits. Hwy 30 frontage, potential development land, Asking \$8,000/A.
20 Acres, mostly tillable, great building site w/County taxes. N. of Elvira, IA. Asking \$11,000/A.

APPANOOSE COUNTY, IA
62 Acres MOL, 61.78 tillable, level/gently rolling, terraces, 1/4 mi. N of Hwy J46, SW of Centerville, IA

WHITESIDE COUNTY, IL
507 Acres, almost all tillable, level farm with many recent improvements, can be split. Located on Hwy. 30, W. of Morrison, IL. Asking \$10,000/A.

MONROE COUNTY, MO
325 Acres, 230 organic, tillable a., remainder is timber & pasture, w/waterfrontage. Close to Moberly, MO

SULLIVAN COUNTY, MO
359 Acres MOL of productive farm land, 281.95 tillable acres, 3 ponds & timber. In Sec. 8 & 9, Taylor Township, Sullivan Co., MO
79.2 Acres MOL of productive farm land, 72.59 tillable acres. Located in Sec. 30, Liberty Township, Sullivan Co., MO
441.6 Acres MOL of productive farm land, 399.66 tillable acres. Located in Sec. 19 & 20, Taylor Township, Sullivan Co., MO
38.83 Acres MOL of productive farm land, 38.38 tillable acres. Located in Sec. 28, Liberty Township, Sullivan Co., MO

DOUGLAS YEGGE - 563-320-9900
ALAN MCNEIL - 563-321-1125
700 6th Ave., DeWitt, IA 52742
Peoplescompany.com

Seller: Sublett RE, LLC

ONLINE AUCTION

160.9 Acres Queen City, MO 63561
SOLD IN 2 TRACTS- 60 & 100 acres m/l

BIDDING OPENS July 18th 9am
BIDDING CLOSES July 20th 2pm

2% BUYERS PREMIUM

Register to Bid

Located near Kirksville MO, Quincy IL & Des Moines, IA

Excellent hunting right in the heart of Big Buck Country

Great trail system, and 3 plots for food to feed deer for hunting

800 SQ FT cabin that sleeps 10

Sterling Sublett
573-864-5724
SterlingSublett@gmail.com
800-895-4430
MissouriLandAndHome.com/Auctions

United Country Real Estate Auction Services Columbia, MO
2022 TOP BROKERAGE

3516 I-70 Dr SE Ste. A
Columbia, MO 65201

MILLER MOVING AUCTION

200 LOCUST STREET - CLARK MO
FRIDAY, JUNE 30, 2023 @ 10 AM

TRUCKS - TRAILERS - SCOOTER - SHIPPING CONTAINER - TINY HOME - CIRCUS TENT - MOWERS - AIR COMPRESSORS - FUEL TANKS - ENGINES - WELDER - PLASMA CUTTER - POWER TOOLS - TOOLS - WHEELS & TIRES - CONSTRUCTION ITEMS - BUILDING MATERIALS - HATCHER ITEMS - FULL LISTING & PHOTOS @ IMANAUCTION.COM

STEVE MILLER, SELLER
IMAN AUCTION COMPANY | 660-388-6235 | ImanAuction.com

HOUSEHOLD AUCTION

Saturday, **June 24, 2023** — 10:00 a.m.
14050 Hwy 16, Douds, Iowa (1 1/2 mile West of Douds intersection on Highway 16)

'97 Ford F250 X-cab 4X4 pickup — 192,000+ miles, runs good, body rough, new mud tires

John Deere 4020 tractor (serial # T213R 173388R) 9434 hours (206 hours since \$9,963.46 Sinclair Tractor overhaul) tractor sells with bucket / hayfork sells separate hayrack w/. new deck cattle chute Choremaster 2400 gas high pressure washer

oak parlor table 5 oil lamps antique oak full size bed various cast iron & metal toys oak rocker iron bed frame lg. butcher's kettle w/ bail various quilts China toy tea set Raggedy Ann & Andy dolls Linden mantle chime clock Paul Dettlifen print wooden oak bench misc. crocks antique child's school desk small chalk board old trunk (painted) sad iron w/. iron antique ice skates antique hickory weave rocker cedar chest child's cradle pink depression glassware ruby red glassware Oneida Rogers silverware quilt pieces lots of baskets carron board weather vane globe gumball machine picnic baskets printers drawer tray stone indian statues lots of books	tan leather full size couch tan rocker recliner blue full size couch w/ recliners & matching recliner/rocker wood table w/ 2 leaves & 4 chairs wood dropleaf table w/ 4 chairs coffee table small round oak end table corner hutch rattan / oak rocker from Cracker Barrel oak book shelf 2 tv stands 4 padded folding chairs cedar bedroom suite — (queen bed / mirrored dresser / standup dresser) blonde bedroom suite — queen bed / mirrored dresser / standup dresser wooden child's chair oval mirror misc bedding	Avangaire 5 hp — 60 gal. upright air compressor Ford Ranger pickup tool box small hand safe small GE refrigerator cast iron patio table & 2 chairs 2 wooden patio chairs misc lawn chairs 3 cast iron/wood porch benches small animal live trap pet taxi wooden cat box shelter various wind chimes small hand safe Kirby sweeper space heater Igloo cooler	4 drawer file cabinet 2 drawer wooden file cabinet binoculars corn hole game misc. luggage / purses Christmas Decorations various holiday decorations misc toys & antique games
---	--	--	--

jar of marbles
misc belt buckles
Old Threshers pins — '68, '70, '72 & '78
Lots of Pioneer seed memorabilia
pocket knives
Birds & Blooms pins
Big Horn 16" saddle
formica/chrome leg table w 4 chairs
New Home sewing machine in cabinet

Wendell Mohr Douds Methodist Church print
Suzanne Brymer winter print
Terry Redlin "Heartland Lights" print
Oneida Rogers silverware in wooden box
Oneida Tudor plate silverware in wooden box

Sellers: Janet & Kenneth Gilchrist
Kyle Gilchrist Auction Company 641/ 919-1077
NOT RESPONSIBLE FOR ACCIDENTS LUNCH ON GROUNDS
CASH OR GOOD CHECK—ID REQUIRED ALL ANNOUNCEMENTS TAKE PRECEDENCE

Turn Your Clutter Into Cash

Get money in your pocket and room in your garage when you sell your stuff and promote your sale through the newspaper classifieds!

June 23, 2023

