

# NEMO Trader

**THE NEMO TRADER**

PO BOX 809 • KIRKSVILLE, MO 63501 • PHONE 660-665-8500

Web Site: [nemotrader.net](http://nemotrader.net) • Email: [sales@nemotrader.net](mailto:sales@nemotrader.net)

**FREE**

A WEEKLY ADVERTISER SERVING ALL OF NORTHEAST MISSOURI AND THE SURROUNDING AREA

**LIME SPREADING SERVICE**

Equipped with variable rate

**PEAVLER TRUCKING LLC**

Alan Peavler, 660-216-0618 - Jared Peavler, 660-342-7685

**exp REALTY**

ELIZABETH GREGORY Realtor

MISSOURI HOME & FARM

Innovative Real Estate for YOU!

660.621.2136

**PUTNAM County State BANK**

13 Month Certificate of Deposit Special

**5.25%\***

**5.38 APY\*\***

Minimum opening deposit \$10,000

Substantial Penalty for early withdrawals

Fees could reduce earnings on interest bearing accounts.

Rate accurate as of 07-18-2023

\*Interest Rate

\*\* Annual Percentage Yield

420 North Pearl St. Milan, MO 63556 660-265-4034

Member Unionville, MO 63565 660-947-2477

**FDIC**

**BENEFIT BREAKFAST**

33775 State Hwy YY • Macon, Missouri  
Execlo Community School

**SATURDAY, AUGUST 19, 2023**

7:00 AM - 11:00 AM

Serving up Pancakes, scrambled eggs, Sausage, Biscuits & Gravy

FREE WILL DONATION

**FOR SALE**

**2003 Monte Carlo**, new battery, new brakes, heat and air work, been driven to St Louis and back several times. Some deer damage, have replacement fender.

**660-9888-1114**

**Hi Inside Metals & Building Supplies**

We have CREWS available for all your building needs!

**CALL JAMES AT 660-299-0254**

- Full line of lumber in stock.
- Complete Building packages Available
- Metal Custom Cut to Length
- 26 to 29 Gauge • 20 Colors in Stock
- Textured Metal In Stock
- Custom Trim up to 20 Ft. Length

Office hours: Monday thru Friday 7am to 5pm • 21564 State Hwy J Brashear, Mo 63533

**Family Treasure Noole**

Antiques Hand Quilted Quilts

Closed Thursday and Sunday

**13731 Hwy 3 La Plata, MO**

**SCOTTY'S AUCTION SERVICE**

573-356-4405

Auctioneer: Scott Kuntz

SEE MORE PHOTO'S ON SCOTTY'S WEBSITE

[WWW.SCOTTYSAUCTIONSERVICE.COM](http://WWW.SCOTTYSAUCTIONSERVICE.COM)

**Farm Equipment Downsizing Auction**

Saturday, August 12, 2023 at 10:00 a.m.

The Campbell Family

**Directions: 56256 Democrat Fill Avenue, Edina, Missouri.** Follow State Highway 15 South of Edina for 0.9 miles, turn West on State Highway 6 for approximately 2 miles, turn South on Democrat Fill Avenue for 1.2 miles to the auction location. Watch for signs the day of the auction.

**REAL ESTATE:** 1987 Chevy 4x4, 4 speed, air, 1/2 ton

**FARM EQUIPMENT:** Landoll VT 29' 7431 model disc; Massey Ferguson 8800 starter fertilizer infro row; 2x2 nitrogen culture; 1630 planter, milo, beans, corn plates, 7347 acres; Westfield 1061 new flighling, new tube; Agra Products, 9 to 7 shank drifter with Unverferth 500 caddy; 14' offset disc, new barings, new blades, 9 1/2 front spacing, 10 1/2 back spacing; John Deere 915 7 or 9 shank, 3 point ripper; Versatile 936 with 855 Cummings, power shift, power shift rebuilt 500 hours; International Harvester 496, 3 point, 4 remotes, shows 6800 hours, 28 1/2', 7 1/2' spacing, nice disc; spring tooth harrow; 2013 AT 3000 Blu-Jet 15 knife anhydrous applicator with hydraulic tongue; hay bine, new wabble box; Ford 145 3 point turn over plow; Case IH 9170, LOTS MORE

**UTV, LAWN AND MISCELLANEOUS EQUIPMENT:** 2013 900 EFT XP Polaris Ranger, 10,600 mile, 878 hours, 2 wheel drive, rear diff 4 wheel drive; 90 mix grass bales; 16' EZ Boardwalk horizontal band saw; John Deere 345 riding mower, 54" deck, runs and mows good; EX Mark 72" deck riding lawn mower, 528 hours, 31 hp gas engine; two 6' x 8' dog houses; 24' x 45' green house frame, needs new plastic; shop cabinets; chem totes; 8 ear corn stove

**There will be many more items at this auction too numerous to mention.**

**Kirksville Real Estate & Personal Property Auction**

Thursday, August 17, 2023 at 4:00 p.m.

The Estate of Bob Zimmerman

**Directions: 1315 East Fillmore Street, Kirksville, Missouri.** From South Baltimore Street, turn East on East Fillmore Street for 2 blocks to the property. Watch for auction signs.

**REAL ESTATE:** Located adjacent to Brashear park in a quiet neighborhood, this 3 bedroom, 2 1/2 bath ranch style home has hardwood floors, a large living room and dining room. The home has central air, electric forced air heat and an attached over-sized 1 car garage. The roof was replaced approximately 2 years ago and there is a 8' x 10' shed in the back yard that will remain with the property. This would make a great family home or investment property.

**Please call Scotty at 573-356-4405 to schedule your personal showing.**

**STORAGE BUILDING TO BE SOLD IMMEDIATELY AFTER REAL ESTATE:** 12' x 25' shed with metal siding a window and barn type doors on skids

**VEHICLE: HOUSEHOLD ITEMS: ANTIQUES AND COLLECTIBLE ITEMS: TOOLS AND OUTDOOR EQUIPMENT: SHOOTING ARMS:**

**There will be many more items too numerous to mention**

**Kirksville Real Estate & Personal Property Auction**

Saturday, August 19, 2023 at 10:00 a.m.

Gary & Dainie Hollon Living Estate

**Directions: 2007 South Boundary Street, Kirksville, Missouri.** From South Baltimore Street in Kirksville, turn onto South Franklin Street for 0.1 miles, turn West on Shepard Avenue for 1.3 miles, then turn North on State Highway H (becomes South Boundary Street) for 0.3 miles to the auction location. Look for signs.

**REAL ESTATE:** This 3 bedroom, 2 bath home has a gas fire place, oak cabinetry and 2 large living rooms. The home has gas heat, a fairly new hot water heater and central air conditioning. There is a 32' x 72' machine shed with a concrete floor, 12' x 12' overhead door and a 10' x 8' overhead door and a 32' x 12' shop area with overhead storage. The home is located across from Truman State University Farm in a quiet neighborhood. Please call Scotty at 573-356-4405 to schedule your personal showing.

**HOUSEHOLD ITEMS, ANTIQUES & COLLECTIBLES, TOOLS & OUTDOOR EQUIPMENT; LOTS MORE.**

**There will be many other items at this auction too numerous to mention.**

**Van Houten Real Estate, Storage Facilities & Historic Petroliana Auction**

Thursday, August 31, 2023 at 4:00 p.m.

Lyle and Anna Louise Van Houten

**Directions: Intersection of Highway 151 and Old US 36.** From US Highway 36 East at Clarence, exit and turn East on Old 36 to the auction location. From US Highway 36 West at Clarence, exit and turn South to the auction location.

**REAL ESTATE:** We will be selling in 3 tracts a historic gas station and 2 sets of storage facilities in Clarence, Missouri.

The three tracts will be sold choice to the highest bidder.

**TRACT 1:** Gas station includes a 14' x 18' office area, 2 bathrooms, 2 bays totaling 26' x 28 1/2', two 10' x 10' glass front overhead doors with openers. The building is in excellent condition and is mainly original. It has ductwork but no current furnace or air conditioning in the building. The underground gas tanks have been removed and soil has been tested. The sellers have documentation to this effect.

**TRACT 2:** North side storage building were built starting in 2000. They consist of one 10' x 20' storage unit and twenty-eight 10' x 12' storage units. The units are always occupied with a waiting list.

**TRACT 3:** South side storage units built in 1998. They consist of eight 10' x 12' storage units and two 5' x 10' storage units. The units are always occupied with a waiting list.

**Please call Scotty for more information and to schedule your personal Real Estate showing at 573-356-4405.**

Go to <https://hibid.com/catalog/472338/van-houten-petroliana-and-collectible-auction> for online bidding.

Vehicles, Petroliana Accessorie, Collectible Signs, Station Equipment

**There will be many more items at this auction too numerous to mention.**

**Real Estate, Farm Equipment & Collectible Auction**

Saturday, September 23, 2023, at 10:00 a.m.

Jim and Marian Hancock Estate

**Directions to Auction Location:** From US Highway 63 at Jacksonville, follow State Highway J East for approximately 11.3 miles then turn South on State Highway OO for approximately 0.4 miles to the auction location. From US Highway 36 at Clarence, follow Highway 151 South for approximately 11.4 miles, continue straight onto State Highway J for approximately 1 mile then turn South on State Highway OO for approximately 0.4 miles to the auction location. Watch for signs.

**REAL ESTATE:** We will be selling 160 acres more or less in 5 tracts. The current tenant ground lease expires December 31, 2023. Home is available at closing.

**TRACT 1:** 1,500 square foot home and outbuildings on 7 acres more or less. This 1998-99 Vinyard Construction built ranch style basement home has three bedrooms, one, handicap accessible, bath, a large living room, dining room and a nice large, kitchen with an abundance of cabinets, a new stove, refrigerator and dishwasher. The home also has a pantry, utility room and office space. There is an attached two car garage and a 30' x 40' detached 1 car garage with a workshop, roll up door, concrete, electricity and heat. The home has a propane furnace and central air new in 2020, windows and doors new in 2023 and a Handy H2 outdoor wood furnace that heats the garage and the workshop. There is a large machine shed and a pole barn included as well. With a quiet country setting and park-like backyard, this home would make a relaxing place to come home.

**TRACT 2:** Includes 93 acres more or less gently rolling acres with 2 ponds. The land is perfect for cattle grazing or hay ground. This land adjoins Tract 1 and there are several places to access this property from State Highway OO.

**TRACT 3:** Features 20 acres more or less of gently rolling ground with an older farrowing house on the property. The land would make a great building location or can be used for grazing or hay ground. This land adjoins Tract 2 on the West side and may be accessed from Monroe County Road 1117.

**TRACT 4:** With State Highway J blacktop frontage and a serene, park-like setting, this 12 acres more or less would make an idea building location or could be used for grazing or hay ground. The land is located at the Northeast corner of County Road 1103 and State Highway J.

**TRACT 5:** This 25 acres more or less includes a pond, a beautiful stand of timber and abundant wildlife. It would make the perfect location for your dream home. The land is located on the Northwest corner of Country Road 1103 and State Highway J.

**Please contact Scotty at 573-356-4405 to schedule your personal showing.**

# BARN RESTORATION

Specializing in Barn & Pole Barn  
Repair and Restoration



See more restorations!



**WAGLER BUILDERS**  
(641) 777-5000 • john@waglerbuilders.com @waglerbuilders



## farmbank

### Free Lux Checking

- NO Minimum balance
- Cellphone protection
- Cyberscout
- AND MORE

Green City 660.951.8430  
Milan 660.951.8432  
Kirksville 660.951.8431

[www.farmbank.com](http://www.farmbank.com)

Member FDIC



## MILLER AG

### CAR PORTS & BUILDINGS

6' to 100' wide clear span • Up to 25' tall walls

[WWW.MILLERAG.NET](http://WWW.MILLERAG.NET)

ARBELA, MO • 660-341-0929 • JOE MILLER

# WE HAVE YOUR DREAM CAR!



## AMERICA'S CAR-MART

Keeping You on the Road

[car-mart.com](http://car-mart.com)



### We Offer:

- Peace of Mind Package
- Service Contract Plus
- Accident Protection Plan
- 100% Satisfaction
- Pay Your Way
- Low Down Payments
- Quality Used Vehicles
- Flexible Financing
- Hand Selected Vehicles
- Convenient Payment Options
- Start Your Approval Online
- Over 150 Locations
- 42 Years in Business
- We Buy Cars

**660-956-4849 • 2015 North Baltimore • Kirksville**



2015 KIA FORTE  
RWD, 6 CYL., WHITE



2008 CHEVY TRAILBLAZER  
4WD, 6 CYL., SILVER



2019 HYUNDAI KONA  
AWD, 4 Cyl., Gray



2016 KIA SORENTO  
AWD, 6 Cyl., Maroon



2013 KIA SORENTO  
FWD, 4 Cyl., Silver



2018 DODGE JOURNEY  
FWD, 6 Cyl., Black



2016 CHRYSLER TOWN & COUNTY  
FWD, 6 Cyl., Silver



2015 CHEVROLET SPARK  
FWD, 4 Cyl., Black



2017 HYUNDAI ELANTRA  
Manual, FWD, 4 Cyl., Gray



2018 KIA SOUL  
FWD, 4 Cyl., Gray



2009 MERCURY MILAN  
FWD, 4 Cyl., White



2019 MITSUBISHI MIRAGE  
FWD, 3 Cyl., Silver



2013 FORD EDGE  
FWD, 6 Cyl., Black



2013 FORD EXPLORER  
4WD, 6 Cyl., White



2012 FORD F150  
FWD, 6 Cyl., Red



2014 SUBARU FORESTER  
AWD, 4 Cyl., White



2015 FORD ESCAPE  
FWD, 4 Cyl., Silver



2014 FORD ESCAPE  
FWD, 4 Cyl., Silver



## AMERICA'S CAR-MART

Keeping You on the Road



**KYLE JENNINGS**  
GENERAL MANAGER

## Have a smart phone or tablet?

You can view current and past Nemo Trader issues online at  
[www.nemotrader.net](http://www.nemotrader.net)

# NEMO Trader



**JOHN COSTELLO**  
Painting Contractor

Farm & Industrial Painting • House Painting • Corral Painting

- Water Blasting
- Airless Equipment
- Specializing in Roof Coatings
- Customer References
- Screw Down Roofs
- Barn Painting
- Rust Stop
- Fast Service

"Where a handshake is still on agreement"

Phone: 1-800-940-8289 • Call: 1-630-240-2948

**LAN-DOW BUILDINGS**

**"We Build To Suit Your Needs"**  
**"Custom Built"**

Pole Barns • Garages • Utility Buildings  
"H" Don or Dick Middleton

**Memphis Lumber Co.**  
1-800-337-5858 • 660-465-8595  
Fax: 660-465-8596

**AGRI-BUSINESS**

**Equipment & Supplies**

Allis Chalmers 185 diesel, 75 HP, 1979, 18.4 x 30, rear weights, top link, with AC 519 hydraulic loader with bale spear only no grill, from an estate, non running from setting. \$3950.00 217-257-1385

250 gal. plastic water tank fits standard pickup bed with shut off valve, hardly used. \$195.00 217-257-1385.

Allis Chalmers 7 foot pull type rotary brush cutter, 540 pto with cylinder. \$750.00. 217-257-1385

Original 14 hole front weight box off Farmall 1206 \$175.00 Morris built 3 pt, 3 prong bale spear \$250.00 217-257-1385

**Livestock**

Fish for stocking ponds: catfish, grass carp, crappie, redear, bass, an fat-head minnows. Heindselman Family Farms. 660-341-5692.

Need something? Let us help you. You can advertise that you are looking for a special item. Call 660-665-8500 for more information.

**AKC LAB PUPPIES**  
Ready now!  
**Lay's Labs**  
LaBelle, MO • 660-956-2482

**EMPLOYMENT**

**Cleaning/Janitor**

ATSU Grounds Service Worker A.T. Still University of Health Sciences - Kirksville, Missouri campus AT-SU is seeking a full time Grounds Service Worker in its Facilities Department. This position will be hands-on to perform maintenance and upkeep throughout university grounds. Grounds tasks include but are not limited to landscaping, mowing, planting, litter and debris removal, leaf blowing, edging, trimming, pruning, raking, soil preparation, irrigation, snow removal, and salting. This position requires the ability to work overtime as needed for inclement weather and special outdoor events. The work hours for this position are typically 6:00 a.m. to 3:00 p.m. Monday through Friday. A high school diploma or equivalent is required with one to two years of experience with landscaping techniques and snow removal preferred. ATSU is an equal opportunity and affirmative action employer offering a competitive salary and benefits package. To learn more, visit atsu.edu/employment, call 660.626.2790, or email hr@atsu.edu.

Call us for all your advertising needs. 660-665-8500.

**Transportation/Drivers**

??CDL License?? Fast and economical. Meets all ELDT requirements. 2 days training, total cost \$1500.00. You need a learners permit and ability to drive a manual. \$100.00 off to mention this ad. Jefferson City, Strafford, Willow Springs, Mo. Please call 573-353-2853 www.capitaltruckdrivinginstitute.com.

**MERCHANDISE**

**Miscellaneous**

Tires, Cooper Discover ATP 265/75 R16, 6/32 to 8/32" tread. \$60 for all. phone or text 319-560-6720. Moulton area

Fish for stocking ponds: catfish, grass carp, crappie, redear, bass, an fat-head minnows. Heindselman Family Farms. 660-341-5692.

Wanted: A wheel to fit a 2014 Hyundai Elantra 16 inch. Just need a spare. Phone 660-280-0771.

Paint guns, make offer, want gone ASAP. Chevy 283 engine needs work, \$425.00. 319-470-8889.

Schmucker Produce Canning tomatoes, heirloom garden tomatoes, melon, zucchini, onion, cucumbers, cabbage, beans, squash, beets. 7 miles North of Kirksville to Ft. Madison Way, East 1/2 mile.

**Miscellaneous**

Lil House wood stove, used, good condition, \$450.00 or best offer. 319-470-8889.

**Pets & Supplies**

Purebred Border Collie puppies, DOB 5/15/2023. LR Alexander bloodlines, current on shots, \$75.00. Registration available for fee. Matthew Beery, 660-684-6930.

2 Chihuahua puppies, 1-black and white, 1-blue merle, 11 weeks, first shots and wormed, APRI papers, \$300.00 each 641-217-0481.

AKC German Shorthaired Pointer pups. Family raised from our hunting stock. All vetting UTD. Ready To Go August 23. Macon \$700. Call 660-651-2311 or 660-651-1520.

Are you having a garage sale or rummage sale? Call us to advertise. 660-665-8500.

**REAL ESTATE RENTALS**

**Homes For Rent**

3 bedroom, 2 bath, country home on 2 acres. 60655 Earnest St, Knox City, MO 63446. Enjoy country living. \$700.00/mo plus utilities. 660-956-2774.

Call about our classified ad specials. 660-665-8500.

**WE OFFER CUSTOM HARVESTING!**

We have Multiple John Deere S Series Machines with Draper Heads available.

We harvest

- wheat
- corn
- beans

Give us a call for your harvesting needs and for a quote. Merlin Ramer #660-341-2045

**Premium Metal Roofing**

**AW Metal Inc.**

**Metal Roofing Headquarters**

641-664-3990 • awmetal.net

**RENT ME TO PLANT YOUR FALL FOOD PLOT**

Delivery Available!

Call Wilson 660-299-0243 Memphis, MO

- 4044R
- 74" Tiller
- 20' 3 pt Sprayer
- Hopper Spreader
- 84" Bush Hog

**Stock Your Pond with the Best!**  
**We stock most species freshwater, game & baitfish.**

**Species Available:** Largemouth bass, hybrid bluegill, bluegill, redear sunfish, black crappie, fathead minnow, walleye, muskie, catfish, golden shiners and more!

**Gone Fishing**  
Time to gather up the little ones, get their fishing poles and go enjoy a day of fishing!

info@harrisonfishery.com • www.harrisonfishery.com  
**660-423-5482**  
Contact us for bulk price & delivery.

**Lolli Livestock Market**  
presents the annual  
**Sporting Goods, Ammo & Firearms Auction**  
704 Main Street Macon, Mo 660-385-2516  
**SATURDAY, AUGUST 19, 2023**

8:00 a.m. Ammo, sporting goods & civil war memorabilia  
10:00 am - GUNS including pre 1898, C&R, modern firearms.  
Online bidding available at AuctionZip.

This auction will be featured on AUCTIONZIP. View catalog and/or bid online. To view a full listing and photos, visit the link:  
[https://www.auctionzip.com/auction-catalog/east-fork-guns-firearms-auction\\_ES29SW5K15](https://www.auctionzip.com/auction-catalog/east-fork-guns-firearms-auction_ES29SW5K15)

**East Fork Guns & Collectibles**  
email: lollibros@lolibros.com website: www.lolibros.com

**GREEN CITY LIVESTOCK MARKETING, LLC**  
19037 HWY 129 S. GREEN CITY MO 63545  
(660) 874 - 4146 • www.greencitylivestock.com

**Next Sales**  
**Wednesday, August 23rd**  
**Special Calf & Yearling Sale**  
\*\*\*\*\*  
**Wednesday, September 6th**  
**Annual Angus & Angus Factored Calf/Yearling Sale**

No recently tested market for a price comparison. A handful of load lots were accompanied by several smaller strings of home raised calves. Supply and demand moderate. Supply included: 93% Feeder Cattle (40% Steers, 60% Heifers); 7% Slaughter Cattle (92% Cows, 8% Bulls). Feeder cattle supply over 600 lbs was 87%.

<b>Steers</b>	Francis Moots 499 Ang 323.00	Lee & Joleen Jaynes 949 Ang 241.50
Jeremiah Waltz 510 BBWF 291.00	<b>Heifers</b>	Francis Moots 396 Ang 311.00
Pat & Ashley McCarty 524 Red Ang 280.50	Gary Grubrich 536 Ang 277.00	Donnie Maggart 560 Ang 255.50
Doug Palmers 551 BBWF 280.50	Kevin Rhoades 593 BBWF 265.00	John Howe 625 BBWF/Cross 259.50
Kevin Rhoades 560 Ang 281.50	John Howe 646 Ang 260.50	Gary Jepson 691 Mix 237.25
Gerald Myers 633 Mix 272.00	Jordan Detering 698 BBWF 254.75	Greg Fleshman 721 Cross Bred 235.25
Eddie & Judy Smock 663 Mix 258.50	Marty Campbell 723 BBWF 245.00	Bill Miller 876 BBWF 234.50
Gary Jepson 670 Ang 279.50		
Phillips Farms 713 Cross Bred 251.25		
Marty Campbell 770 BBWF 238.50		
Kenny Sparks 910 BBWF 249.00		

View or bid online through www.dvauction.com.

**WEBSITE:** www.greencitylivestock.com • BARN: 660-874-4146

**OWNERS**  
Darren Hodgen: 573-999-3252 • Cody McClamroch: 660-349-6535  
Caleb Biggs 660-654-4630 • Operations Manager: Steve Evans, 660-375-2545

**FIELD MANAGERS**  
Chuck Daniels: 660-626-7621  
Steve Frazier: 660-626-7066 • Jeff Gray: 660-956-8251  
Justin Morgan: 660-292-2638

\*We are your top market for all classes of cattle\*  
We value and appreciate your business!

**WE GOT YOUR NEEDS COVERED!**

**FARM TARPS TRUCK TARPS**  
**HOOP BUILDING COVERS**

**Troyer TARP MFG.**  
**660-486-3301**  
20264 STATE HWY. VV • ETHEL, MO 63539

**Skyline Service LLC**  
 Skid Steer and Construction Repair  
 Levi Weiler  
 660-346-6881 • 660-883-5525  
 Scan Tool Diagnostics  
 Exhaust After Treatment Repairs • SCR Unlocks  
 Skid Steer Tracks Available

**SHOW-ME SEAMLESS GUTTERING**  
 FREE ESTIMATES • PROMPT SERVICE  
 • 5" & 6" Gutters  
 • Siding • Soffit • Fascia  
 (23 colors available on Gutters & Fascia)  
 Tried of Cleaning your Gutters?  
**LEAFPROOF THEM!**  
 ELLIOTT HIX  
 660-626-3447 • KIRKSVILLE, MO

**Connie's MOBILE HOME TRANSPORT**  
 We offer the following...  
 Break Downs • Transport • Set up • Anchoring  
**Call Rich today! 573-881-7483**

**Show Me Plumbing Services**  
 • General Mini Excavation & Skid Steer Work  
 • Livestock Watering  
 • Waterlines & Sewer Systems  
 • Residential Services & General Plumbing  
 • Utility Trenching  
 Stan Schrock 660-988-1163  
 Greentop, MO 660-766-2636

**JAGUAR LUMBER**  
 Attn: Land Owners  
 Buyer of Timber  
 \*All species also Select yard Trees/Logs over 40" diameter,  
 \*Trees are selectively cut to insure optimal Forest Regeneration.  
 Certified & Bonded | Lavon Gingerich 641-664-2080

**CELEBRATIONS! PARTY RENTAL**  
 KIRKSVILLE, MO  
 FOR RENT  
 • Tables & Chairs  
 • Tents • Bounce House  
 • Cotton Candy Machine  
 • & More!  
 660-626-5162 or 660-665-9380

**ANTIOCH REPAIR**  
 SPECIALIZING in  
 • Skid loaders  
 • Ag Equipment  
 • Construction Equipment  
 Call us for all your attachment needs  
**Ethan Zimmerman • 660-299-0808**

**Golden Grain Bins-Summer Savings**  

Grain Bins	Floors w/12" Supp. & Flashing
18'x18' 4,195bu. \$ 7,029	18'....\$1,962 30'....\$ 5,476
27'x21' 11,265bu. \$14,108	21'....\$2,682 36'....\$ 7,801
42'x24' 32,245bu. \$32,886	27'....\$4,474 42'....\$10,623

 Golden Grain  
 GMLS Industries, Inc.  
 PH: 660-699-2179 or 620-983-2136  
 www.gmlsindustries.com

**Memphis Seamless Gutter**  
 Since 1993  
 5 inch & 6 inch  
 16 colors in stock  
**REAL Gutter Cover**  
 Free Estimates  
 Mon. - Fri. 7 AM - 5 PM  
**660-883-5368**  
 Serving a 50 mile radius from Memphis, MO

**LOLLI LIVESTOCK MKT, INC.**  
 Special Calf & Yearling Sale  
 Tuesday, August 15 - 11am  
 100 blk/bwf str 7-800lbs (load) 50 blk/bwf str/hfrs 5-700lbs  
 80 blk/bwf hfrs 700lbs (load) 45 blk/bwf str/hfrs 5-700lbs  
 80 blk/bwf hfrs 650lbs (load) 45 blk/bwf hfrs 650lbs  
 65 blk/bwf str 875lbs (load) 40 blk/bwf str/hfrs 4-600lbs  
 75 blk/bwf str/hfrs 625-750lbs 35 blk/bwf str/hfrs 3-500lbs  
 68 blk/bwf str/hfrs 4-500lbs 31 blk/bwf str/hfrs 5-600lbs  
 60 blk/bwf str/hfrs 5-700lbs 25 blk/bwf str/hfrs 5-700lbs  
 50 blk/bwf str/hfrs 5-700lbs 10 blk/bwf str 850lbs  
 This is only a partial listing, many more by sale date.

**LANCASTER LUMBER INC.**  
 Lancaster, MO.  
**1-800-424-5071**  
 LAN-DOW BUILDINGS  
 www.lancasterlumber.com

**TIMBER MANAGEMENT.**  
 Purchasing Walnut, Oak, Maple & Other Species  
**WE PAY BEFORE WE CUT**  
**BONDED & INSURED** Est. 1968  
**641-895-8209**

**Special Cow, Cow/Calf & Bull Sale**  
 Tuesday, August 22 - 11am  
**JASON GARLOCK - 26 Fancy Angus:** 2 years old, 1200lb heifers start calving Sept 1st for 60 days, bred to low birth weight Sim Angus bulls. These heifer have a great disposition and are very gentle. Home raised from Joe & Doug Clarkson, all shots up to date.  
**SALSMAN FARMS - 50 blk/bwf cows:** 6-8 years old, some calves on side, calving now.

**Country Living At Its Finest**  
 FORTY ACRES east of Preston. 2200 sq. ft. home, 3 large bedrooms 2 1/2 baths, gorgeous views, fenced and cross fenced, 4 ponds, large shop w/concrete floor, electric, Asking \$499,500. Call Sandra with Partin Real Estate, 417-328-8566  
 Sandra Hoover, Broker/Sales  
 Partin Real Estate  
 3520 S. Springfield Ave.  
 Bolivar, Mo. 65613  
 Office: 417-326-4270  
 Cell: 417-328-8566

**Edina Livestock Sales**  
 Edina, Missouri

**Lolli Livestock Market, Inc.**  
 704 Main st • Macon, MO • 660-385-2516 www.lollibro.com  
 Frankie 660-651-4040 • Tim 660-651-3496 • Joseph 660-346-9711  
 Jordan 660-346-0410 • Cody 660-676-9392 Cattle accepted on Sundays

**Friday, August 11th**  
 Special Feeder Calf Sale

**JOIN US FOR THE 9TH ANNUAL**  
**Helping Hands Benefit Auction**

**Friday, August 18th**  
 Special Cow Sale  
 Bob Neese 50 2-7 yr old Fall bred Cows  
 Del Gregory 31 Cow/Calf pairs, 1 month old calves, No bull exposure  
 Kevin Blaine 50 Bred Cows

Supporting the **Clinic for Special Children** and local needs.  
**Saturday, August 19, 2023**  
 @ Richard Good Farm 10507 County Road 813 Memphis MO  
 9:30 Candy Drop | 10:15 Auction | 10:30 Start Serving Bar-B-Q Lunch | 12:00 Remarks by CSC Doctors  
 Weekend camper rental, specialty handcrafted wooden semi, specialty handcrafted wooden log chain, 4 piece outdoor chair set, 2-poly glider rockers, Pit Boss 5 burner griddle, 2-childrens picnic tables, 2-14' canoes, Mantis tiller, 40 small straw bales. Lots of Milwaukee tools: impacts, drills, saws, shop vacs, trimmers, weed eaters, 16" chainsaws, backpack sprayers, lights, edgers, tire inflators and more. 2- certificates for 1" limestone, 360 hunting blind, 8 person heavy duty croquet set, CAT pedal tractor, Case IH, CAT, and John Deere tractor & trailer riding toys, 2-big wheel trikes, 2- bean bag toss, 2-web swings, 15' trampoline, girl speed bike, girls dresses, sewing certificate, quilts: 94x103 sampler quilt, tractors & trucks, queen Case IH, king gray patches and more.  
 Fabric baskets, commercial 8qt. Kitchen Aid mixer, fresh baked goods, pizza supper, chicken bbq meal, theme/gift baskets, meal certificates, toys, food and much, much more!!!!  
 Donations can be dropped off at Richard Good Residence. from Wed.-Sat. morning, for other pick-up locations and questions contact:  
 Bryan B. 660.342.2733  
 Harlan B. 660.341.4113  
 Ed Lyrin G. 660.341.3040  
 Michael M. 660.342.8833  
 Lavern M. 660.342.3316  
 Friday, August 18, 2023 Cheesesteak & Salad Bar Supper  
 Serving 5:00-7:00 | Introduction 7:30 sharp  
 Sides & Speech by the Clinic for Special Children  
 Followed by: Chorus Singing  
 The Clinic for Special Children will have a stand set up to do Carrier Testing, the day of the auction. Cost for the Plain Insight Panel is \$99

Day of Remembrance for  
**Lloyd Dale Gladhill (LD)**  
 Graveside Service at  
**Mt. Tabor Cemetery,**  
**Saturday, August 19, 2023 at 3pm**  
 Evening for Loyd at  
 LD's Bar and Grill, Economy, MO  
 Burgers, Brats, Hot dogs with salads and chips.  
**ALL DONATIONS GO TOWARDS A HEADSTONE FOR LD**  
**Live Music by "Fully Loaded" at 8pm!!**  
 Join us for a day of great memories and good times!!

To Consign For Any or All Sales or For Information Call:  
 Owner - Kevin Strange • Cell: 660-341-9974  
 Ryan Strange • Cell: 660-341-9721  
 Sale Barn: 660-397-9999

**Field Reps:**  
 Bill Tom Hall 660-342-5420 Mike Bronestine 660-341-9965  
 Jason Bichsel 660-216-0373 John Powell 660-341-1717

**FIND THE PERFECT PIECE FOR THE PERFECT PRICE**  
 Find the stuff you want and sell the stuff you don't in the newspaper classifieds.

**GOVERNMENT EQUIPMENT AUCTION TUESDAY AUGUST 22**  
**875+ ITEMS SELL NO RESERVE!**  
 NT9779 '21 Mack Granite dump truck  
 DO2883 '13 Int' Work Star 7600 hook lift truck  
 MG9588 '16 John Deere 770G motor grader  
 MB9725 '07 John Deere 770D motor grader  
 DP0536 '04 Komatsu PC-40MR-2 mini excavator  
 NT9778 '02 Case 590 Super M backhoe  
 DO2923 '15 GMC Sierra 2500HD Denali Crew Cab pickup truck  
**INVENTORY INCLUDES:** dump trucks, backhoes, motor graders, wheel loader, hook lift truck, mini excavators, chip spreader, pothole patcher truck, SUVs, pickup trucks, command center trailer, semi trucks, ambulances, tractors, skid steers, lawn mowers and more. All items are sold "AS IS." 10% buyers premium applies. 866.608.9283  
**BID NOW! purplewave.com**

# Judd Motors

Call 660-457-3700  
Hwy 63 North, Lancaster, MO

**2013 Case 580N Loader Backhoe turbo,**  
4WD, Cab, AC, Extendahoe, foot swing, air ride seat, ride control, 18"  
bucket, flip pads, 1 owner, VERY NICE, only 1100 hours. **\$59,900**

**2014 Ford F150 SEL,**  
AWD, sunroof, 134k, black, **\$12,500**

**Heavy Duty Tractor**  
Load Center  
adapted for **\$995**  
(call for more details)

**2008 Chevrolet Blazer LT,**  
4wd, 6 cyl, 205k miles,  
maroon, very nice, ONLY **\$6,500**

**2016 Ford Explorer XLT, 4wd,**  
V6, 3 row, silver, only 88k miles,  
very nice, ONLY **\$19,500**

**2004 Buick Lesabre Limited,**  
3.8L engine,  
leather, silver, only 82k miles,  
like new, only **\$10,900**

**2019 Chevy Traverse LT, 6**  
cyl, only 57k miles, charcoal,  
new tires, only **\$27,900**



[www.juddmotors.com](http://www.juddmotors.com)

In Business Over 75 Years  
Curly and Kevin Judd



**Metals & Recycling**

**KIRKSVILLE, MO**

**660-665-8000**

For current scrap prices  
call or visit our **Facebook Page**  
[victorymetalrecycling.com](http://victorymetalrecycling.com)



★ **METAL RECYCLING**

RECYCLE YOUR SCRAP METAL WITH US! WE PAY CASH FOR: COPPER,  
ALUMINUM, STEEL, STAINLESS STEEL, APPLIANCES, E-SCRAP,  
BRASS, LEAD, RADIATORS, ALTERNATORS, BATTERIES, STARTERS,  
ELECTRIC MOTORS, APPLIANCES, & VEHICLES  
(TITLE & ID REQUIRED).

★ **ROLL-OFF CONTAINER**

10-20-30-40 CUBIC YARD DUMPSTERS

**3602 INDUSTRIAL RD. • KIRKSVILLE, MO 63501**  
[DJANESVMR@GMAIL.COM](mailto:DJANESVMR@GMAIL.COM)  
[WWW.VICTORYMETALRECYCLING.COM](http://WWW.VICTORYMETALRECYCLING.COM)

# Accepting New Patients!



**AURORA BELL, D.O.**  
**FAMILY MEDICINE**

**1611 S BALTIMORE | STE A**  
**KIRKSVILLE, MO**

**CALL (660) 665-7575**  
**TO SCHEDULE AN APPOINTMENT**

 **Complete Family Medicine**

## Animal Housing, Hay Storage & Much More!!



**Skylight**  
Fabric Structures  
20749 State Highway VV  
Ethel, MO 63539  
660-486-3250  
833-482-8862

The meeting Place for Buyers and Sellers!!

# NEMO

Trader

**660-665-8500 or email: [sales@nemotrader.net](mailto:sales@nemotrader.net)**

**SHOP LOCAL - BUY LOCAL - ENJOY LOCAL**

**Wanted**

Retired male nonsmoker with good references seeks country rental, old farmhouse, modular, etc. Call JP 660-351-3716

**Recreational For Rent**

Small family group would like to lease land for hunting in Northeast Missouri. Please call Craig 903-539-1025 or Brett 903-736-1748.

**REAL ESTATE SALES**

**Mobile Homes For Sale**

DISCOUNT NEW MOBILE HOME-Prices start at \$64,900 delivered and set up. 573-499-9993. columbiadiscounthomes.com.

NEW INVENTORY-\$59,900 Delivered and set up, Hurry! Call Adam 573-657-2176. amegamobilehomes.com

Tiny Homes Missouri franchise 573-881-7965.

BASEMENT READY TRUE MODS--in stock ready for delivery, 573-657-7040. chateauhomes.net

**RECREATION**

**Motorcycles**

WANTED TO BUY: Harley Davidson's, any year, any condition, cash money. Days 660-263-1356 or 660-537-0068

**NEMOTRADER.NET**

**RECREATION**

**Wanted**

WANTED TO BUY: Harley Davidson's, any year, any condition, cash money. Days 660-263-1356 or 660-537-0068

**SERVICES**

**Construction-Services**

SPRAY FOAM INSTALLATION! We install open and closed cell spray foam. Strengthen your building and block drafts! Over 1 Million bd. ft. applied. Contact Lester at 641-208-7071, Spray Tek LLC 16302 192nd Street Bloomfield IA 52537

**Chat/Dirt/Gravel**

DIRT WORK All types of excavation, reclaiming overgrown fields, including CRP and WRP. Building site preparation, creating new trails and crossings, Food plot development and maintenance. Leveling and grading, wetland construction and maintenance. Pond and lake cleaning and construction. Call for quotes. 660-342-2701

Have a smart phone or tablet? You can view current and past Nemo Trader issues online at [www.nemotrader.net](http://www.nemotrader.net)

**\$1,456,000<sup>00</sup>**

**10567 Wildflower Drive, Unionville, MO 63565**

This Lake Thunderhead impressive double lot waterfront 6,058 sq. ft. mansion is second to none, with huge expansive views to the south and west and was originally built by a seed company heir. This iconic professionally designed home features: a huge master suite with his and hers master bathrooms, his and hers walk in closets, professional kitchen, teak wood floors, custom cabinetry throughout the house, a total of 6+ bedrooms, 6 full and 2 half bathrooms, 3 laundry rooms, professional landscaping, and many exquisite details too numerous to mention. This property features the largest covered boat dock on the lake, boasting 3 air lifts, 2 jet ski drive on docks, and two lounge platforms. Don't miss out on this amazing property, call Ben Daniels, Broker/Owner, RSPS, CWS, Certified Lake Property Expert, 641-858-7389. Call Ben Daniels for all of your real estate needs, from Lake Properties, Commercial, Residential, and Farm, he takes the time to market your amazing property accurately and gets results by designing an effective marketing plan for your property.

**LakePropertiesForSale.com**

**Ben Daniels**  
Broker/Owner, RSPS, CWS,  
Certified Lake Property Expert  
32250 Mallard Drive, Unionville, MO 63565  
Office: 641-858-7389  
Email: [LakePropertyExpert@gmail.com](mailto:LakePropertyExpert@gmail.com)

**Central Metals Recycling LLC**

**Buyers of Ferrous and Non-Ferrous Metals**

**We Pay More \$\$\$, Call For Your Best Pricing Today!!**

<b>11923 Hwy. 54</b> Mexico, MO <b>573-581-0336</b>	<b>1601 N. 30th</b> Quincy, IL <b>217-214-7649</b>	<b>1175 Hwy. 96</b> Hamilton, IL <b>217-847-3191</b>
---	--	--

**ATTENTION LAND OWNERS!!**

**Buyer of standing timber**  
*Paying Cash Upfront!*

Owner/Operator of Sawmill

- Buy/Cut Logs
- Certified
- Bonded
- Insured

**WE HAVE SEMI LOADS OF FIRE WOOD LOGS FOR SALE**

**Tri State Timber L.L.C.**  
353 1/2 Grand Ave. • Memphis, Mo 63555  
660-341-4921 • 660-465-2975

*Your Local*  
**FARM SUPPLY SOURCE**

NUTRITION • MEDICAL • FARM • PET • APPAREL

SEE US FOR YOUR  
**SHEEP & GOAT**  
EQUIPMENT NEEDS

Hometown Animal Health has provided quality products, expert knowledge, and friendly customer service to northeast Missouri and surrounding areas. We are a full-service nutrition, medical, and farm supply source carrying complete lines of animal feed and supplies, farming equipment, agricultural parts, lawn and garden tools, work apparel, and much more!

**Hometown ANIMAL HEALTH**

Feed • Medical • Farm & Pet Supplies • Footwear & More

website: [hometownanimalhealth.com](http://hometownanimalhealth.com)

**660-465-2967**

18743 US Hwy, 136 Memphis, MO 63555  
"on Hwy 136 west of Memphis"

Monday-Friday 8pm to 5pm  
Saturday 8am to 1pm

**FRONTLINE FENCING LLC**

660-956-2430 • Greentop, MO

- \* Arrowquip Cattle Handling Equipment
- \* Ranger Squeeze Chutes
- \* Heavy Duty Tubs and Crowding Alleys
- \* Calving Pens
- \* Heavy Duty Gates – Custom and Standard Sizes
- \* Steel Pipe Fencing – Corrals, Working Areas

660-956-2430 • Greentop, MO

**NEMO** *Trader*

*The Meeting Place For Buyers And Sellers!*

**HAVE AN EVENT OR SPECIAL THAT YOU WANT TO PROMOTE. INSERTS WOULD BE A GREAT!**

CALL OR EMAIL FOR YOUR CUSTOM QUOTE!

*Call Cindy!*

**660-988-6830**

chigh@nemotrader.net • 701 East Laharp Ste. C • Kirksville, Mo 63501

**NEMO** *Trader* **KIRKSVILLE Daily Express**

**FREE**

NEW EDITION EVERY FRIDAY!  
VOL. 30 • NO. 05 • FEBRUARY 17, 2023

**NEMO** *Trader*

**THE NEMO TRADER**  
PO BOX 809 • KIRKSVILLE, MO 63501 • PHONE 660-665-8500  
Web Site: [nemotrader.net](http://nemotrader.net) • Email: [sales@nemotrader.net](mailto:sales@nemotrader.net)

A WEEKLY ADVERTISER SERVING ALL OF NORTHEAST MISSOURI AND THE SURROUNDING AREA

<b>FARM &amp; RANCH</b> ELIZABETH GREGORY 660.621.2136 <a href="http://missourihomeandfarm.com">missourihomeandfarm.com</a>	<b>Signature</b> Residential Remodeling, LLC 660-785-0248 <a href="http://www.signatureremodelingkv.com">www.signatureremodelingkv.com</a>	<b>HEEMSBERGEN SWINE GENETICS</b> <b>Show Pig Sale</b> Sun, March 5th Viewing @ 1:00 PM Sale @ 2:30 PM 60+ Head Available: Cross & Yorks 24230 160th St., Bloomfield, IA 52537 RYAN HEEMSBERGEN 641-789-8231 LEROY JACKSON 641-208-7120
<b>CENTURY 21</b> Lifetime Realty	<b>KEIM LUMBER COMPANY LLC</b> COMPETITIVE PRICES • FREE ESTIMATES • COMPLETE BUILDING PACKAGES • WINDOWS AND DOORS • INSULATION • DRYWALL • DELIVERY 13625 St. Hwy 3 LaPlata, MO	<b>CUSTOM GRAZING</b> LARGE HERD GOOD GRASS GOOD CARE HAPPY ANIMALS SHELBYVILLE, MO CALL PETER +1.578.4000

**CALL TODAY TO RESERVE YOUR SPOT**

**Insert Rates (11,000 pcs):**

8.5" x 11" single sheet	\$407
4-12 page tabloid	\$429

# BURKHOLDER



**2019 Ford F-250 XLT Premium FX4**  
Crew, 4x4, 6.7 Diesel, 41k One-Owner Miles, A Must See, Accident Free, Texas Truck, Ruby Red

Full line of accessories Outfit your truck here!

**\$54,900**

**Edina 660-397-2551 51001 State Hwy 15 BurkholderTruckSales.com**



**2020 Nissan NVP 3500HD SL**  
5.6V8, Only 26k One-Owner Miles, Personal Van, This Van is Near New, Blue



**2020 Chevy Express 2500 LT**  
12 Pass, 6.0V8, Auto, Only 61k Miles, Very Well Kept, Taxi or Family Ready, Nice, Blk



**2019 Toyota Sienna LE AWD, 7 Pass**  
3.5V6, Auto, 107k One-Owner Mi, Clean Carfax, Perfect Service Record, Nice, Gray



**2019 Ford F-350 XL STX, FX4**  
Crew, 4x4, 6.2V8, 105k Mi, Accident Fee, Well Kept Texas Truck, Service Recrd, Blue



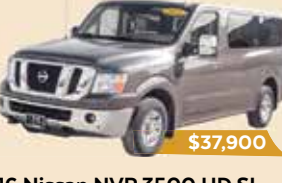
**2019 Chevy Express 3500 LT**  
15 Pass, 6.0V8, 91k Miles, Clean Carfax, Nice-Clean, Southern Van, Taxi Ready, Blk



**2018 Chrysler Pacifica Touring Plus**  
S, 7 Pass, 3.6V6, 119k Miles, Clean Carfax, Great Service Record, Southern Van, Black



**2017 Chevy Tahoe Premier, 4x4**  
5.3V8, Auto, 80k One-Owner Miles, Great Service Record, A Must See, Black Currant



**2016 Nissan NVP 3500 HD SL**  
12 Pass, 5.6V8, Auto, 80k Mi, One-Owner, Well Kept, Taxi or Family Ready, Brown



**2014 Chevy Express 1500 LT AWD**  
8 Pass, 5.3V8, Auto, 60k One-Owner Mi, Nice-Clean Family Van, Come See, Gray



**2011 Chevy Silverado 2500HD, 4x4**  
Ext Cab, Utility Bed, 6.6 Duramax, Allison, 104k Mile, One-Owner, Texas Truck, Silver



## BW Trailer Hitches

- All Aluminum
- Customizable
- Built Locally



## Looking to Rent Vans?



We now have 15 passenger vans available for rent!



Call us today!!  
(660) 397-2551

## Martin Truck Bodies



Gatorback Mud Flaps



**weather guard** Toolboxes

## AUTO & TRUCK SALES + ACCESSORIES



# NEMO Trader

11,000 CIRCULATION THAT COVERS MISSOURI, IOWA, AND ILLINOIS. NEW issue each Friday. Available online at [nemotrader.net](http://nemotrader.net) or pick up at local business in the area. Call 660-665-8500 or email: [sales@nemotrader.net](mailto:sales@nemotrader.net)

**www.nemotrader.net**

**KEIM LUMBER COMPANY LLC**  
**COMPETITIVE PRICES • FREE ESTIMATES**

- COMPLETE BUILDING PACKAGES
- WINDOWS AND DOORS
- INSULATION • DRYWALL
- DELIVERY

13625 St. Hwy 3 LaPlata, MO

**PURE WATER SOLUTIONS**  
*Tired of hard water and bad taste?*  
**WE HAVE YOUR SOLUTION!**

Call Dave  
 For Free Water Analysis  
**660-341-9007**

PO Box 827 • Kirksville, MO 63501

- Water Softeners
- Reverse Osmosis
- Whole House Filters

**BUCKMAN MACHINERY, LLC**  
**573-881-3557**



**John Deere 6300**, cab, power quad, loader, 5400 hrs, with new engine, 90% rubber, **\$36,500**

**THE KIRKSVILLE QUARTERLY HOLIDAY EDITION**  
**COVERING EVENTS**  
 IN NOVEMBER 2023, DECEMBER 2023 & JANUARY 2024

Publishing on  
**October 21, 2023**

Deadline to advertise is  
**September 14, 2023**

5000 copies each edition. Kirksville Daily Express subscribers will receive it in the October 21st Saturday edition, and other copies will be available in Kirksville at HyVee, Ayerco, and several other local businesses as well as surrounding areas for FREE!

**KIRKSVILLE Daily Express**

705 E. La Harpe Street, STE F  
 Kirksville, MO 63501  
 Email: sales@kirksvilledailyexpress.com  
 Phone: 660-665-2808  
 Website: kirksvilledailyexpress.com



**Current July issue is out now!**  
*All ads are in full color (October, January, April and July mag. available)*

**John Deere 3010 D**, sharp, new tires, one owner, straight, runs the best ..... **\$7,500**

**John Deere 3020 D**, good rubber, runs out fine, loader available ..... **\$6,950**

**John Deere 54 Manure Spreader**, top beater, low use, ..... **\$4,250.**

**John Deere 3020 D**, WF, dual hydr, 16.9x38, 7000 hrs showing, loader available, ..... **\$8,500**

**John Deere 5200 w/520 Loader**, 2600 hrs shown, mechanically sound, hydr valve, ..... **\$12,950.**

**John Deere 4010 D**, only 2375 actual hrs, nice, loader available, ..... **\$13,950.**

**John Deere 54 Spreader**, 3rd beater, Late model, low-low use, ..... **\$4,250.**

**Selection of JD Brush Hogs, 6', 7', 10, ready to mow**

**John Deere 158 Loader**, no welds, ..... **\$4,500**

**John Deere 148 Loader**, ..... **\$2,950**

**John Deere 146 Loader**, ..... **\$2,750**

**John Deere 44 PTO Manure Spreader**, longtime shedded, very good condition, ..... **\$2,750**

**Rhino SR15M Batwing Brush Hg**, 8 luminated, 1000 PTO, field ready ..... **\$5,750**

**John Deere 709 3pt PTO Mower**, no welds ..... **\$1,750**

**2023 Alfalfa**, some with orchard grass, \$14/bale, pure, delivery available.

**Alfalfa - 2nd cutting**, 3x3x8 bales, 21% treat, green, \$165/bale delivery available

**2023 Mixed Grass**, 45-50 lbs., \$12/bale, delivery available.

**Loaders & Duals available for many**

**There's a better way to get noticed.**  
 Keep life simple. Take out an ad.



**NEMO Trader BRAIN GAMES**

**-CROSSWORD- PUZZLE**  
 -AUGUST- WEEK 2

**-PUZZLE- SODOKU**  
 -AUGUST- WEEK 2

**Here's How It Works:**  
 Sudoku puzzles are formatted as a 9x9 grid, broken down into nine 3x3 boxes. To solve a sudoku, the numbers 1 through 9 must fill each row, column and box. Each number can appear only once in each row, column and box. You can figure out the order in which the numbers will appear by using the numeric clues already provided in the boxes. The more numbers you name, the easier it gets to solve the puzzle!

7		8	5					
3			6	1	9			
			3		6			
8	3		7		2			
	7		5	8		6		
		6						
4		9						
2	5		1	7		3		

Level: Intermediate

**Fun By The Numbers**

Like puzzles? Then you'll love sudoku. This mind-bending puzzle will have you hooked from the moment you square off, so sharpen your pencil and put your sudoku savvy to the test!

**CRYPTO FUN**  
 Determine the code to reveal the answer!

Solve the code to discover words related to immunizations. Each number corresponds to a letter. (Hint: 18 = E)

**A. 14 12 11 11 25 15 18**  
 Clue: Protects against illness

**B. 10 19 11 23 19 9**  
 Clue: Medical professional

**C. 15 18 18 10 3 18**  
 Clue: Pointy instrument

**D. 16 9 19 23 18 11 23 25 19 15**  
 Clue: Provides safeguards

**WORD SEARCH**  
 -AUGUST- WEEK 2

**IMMUNIZED WORD SEARCH**

Find the words hidden vertically, horizontally, diagonally, and backwards.

- WORDS**
- ACUTE
  - ADJUVANT
  - ALLERGY
  - ANTIGEN
  - ANTITOXIN
  - ANTIVIRAL
  - BACTERIA
  - BIOLOGY
  - BOOSTER
  - CONJUGATE
  - DELTOID
  - DISEASE
  - DOSE
  - EXPOSURE
  - IMMUNITY
  - IMMUNIZE
  - INACTIVATED
  - INFECTION
  - NEEDLE
  - RESPONSE
  - SHOT
  - SORENESS
  - VACCINE
  - VIRUS

**WORD SEARCH**  
 -AUGUST- WEEK 2

**CLUES ACROSS**

- A way to pick up
- Presents
- Type of guitar
- Actor Idris
- A citizen of Iran
- Creative
- Harness
- Weight unit
- You better call him
- Utterly devoted
- Male cat
- Spiritual leader of a Jewish congregation
- Risk-taker
- A team's best pitcher
- Cool!
- Women's \_\_\_ movement
- Georgia rockers
- Step-shaped recess
- The princess could detect its presence
- Type of truck
- Butterhead lettuces
- Angry people see it
- Lines where two fabrics are sewn together
- Soviet city
- Carpet
- Traveled all over
- Thin, straight bar
- Body art (slang)
- Congressman (abbr.)
- No seats available
- Breaks apart
- Arabic name
- Ballplayer's tool
- Type of sword
- Baseball team
- Upper bract of grass floret
- Italian Seaport
- Ancient Syrian city
- Shoelace tube
- The Miami mascot is one
- South American nation
- Popular video game "Max \_\_\_"
- Body part

**CLUES DOWN**

- German courtesy title
- Ancient Greek City
- Ancient Hebrew calendar month
- Long-legged frog family
- Photo
- Delivered a speech
- Lute in classical Indian music
- Decorated
- Take a seat
- Belonging to a bottom layer
- Member of a Semitic people
- Part of a ticket
- Defunct Guinean money
- Challenges
- Popular BBQ food
- Subway dweller
- By way of
- Shady garden alcove
- Egyptian city
- Partner to "flowed"
- Widens
- Old Eurasian wheat
- Act incorrectly
- European pipeline
- Al Bundy's wife
- Ocean
- Root eaten as a vegetable
- Sound units
- Style of music
- A way to drench
- Hot beverage
- A cotton fabric with a satiny finish
- Rumanian city
- Urge to action
- Vaccine developer
- Canadian law enforcers
- Wings
- "Perry Mason" actor Raymond
- Small fry
- Clapton, musician
- Take a chance
- Bland food
- Consumed

**CROSSWORD**

1	2	3	4	5	6	7	8	9	10	11	12	13	
14				15						16			
17				18						19			
20				21		22			23				
				24		25			26				
27	28	29		30				31		32	33	34	
35			36			37				38			
39				40				41					
42				43				44					
45				46				47			48		
				49				50			51		
52	53	54				55			56		57	58	59
60				61				62		63			
64				65						66			
67				68						69			



**FOR SALE**  
**All Sired Angus Bulls,**  
**14 & 18 Months Old.**  
**Harold Trump**  
**660-341-5730**

**Home Services**

Scott Huskey's Home Service is now providing 2 skirting systems for manufactured home. The insulated skirting saves on utilities and prevents freeze ups. The uninsulated is very strong and protects the underside. Both systems look great! Since 1972 573-696-3468.

**Lawn/Garden/Landscape**

New 3 pt. tillers, heavy duty, gear driven, 7' to 12' starting at \$4,150. 660-874-4455.

**TRANSPORTATION**

**Accessories-Transportation**

For Sale: Slide in pickup box camper, small size. Air, stove, refrigerator. Selling due to health. Phone 660-280-0771.

**Automobiles**

For Sale: 2008 Dodge Grand Caravan SXT (Stow-N-Go) 3 row seats, 3.8 V6 engine, 123,650 miles \$3500.00 Phone 660-874-4564

**Trucks, 4x4's, SUV's**

FOR SALE 2019 PJ 30 ft Gooseneck trailer, 10,000lb axles, good 14ply tires, dovetail with flip-over ramps, good solid trailer \$12,900 OBO. Call Larry 660-342-6687

For Sale: 16'x8' Tandem trailer flatbed, loading ramps, 2 5/16 bumper hitch, electric brakes, 2019 wood floor and sides 660-874-4564



**MAKE A SPLASH**  
*without wasting cash*  
 Small ads produce big results. Ask about our advertising rates to fit any budget.




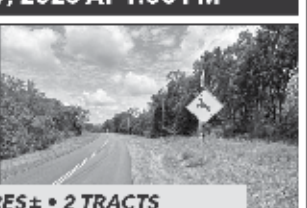
204 E. Reid Street  
 Edina, MO 63537  
**Jesse Sparks**  
**573-406-8787**



**MACHINERY & FIREARM AUCTION**  
**SATURDAY SEPT. 2, 2023**  
**Consign Today 573-406-8787**  
 Taking Boats, Auto's, Fencing, Ammo, Side by Sides, 4 Wheelers  
 Bring in when ready. 1st come, 1st to sell.  
**NO CHARGE for NO SALES.**  
**CALL TODAY TO CONSIGN!**  
 www.sparksauctionservice.com

Call us for all your advertising needs. 660-665-8500. Call about our classified ad specials. 660-665-8500.

**VIRTUAL ONLINE**  
**ADAIR COUNTY, MISSOURI**  
**LAND AUCTION**  
**TUESDAY, AUGUST 29, 2023 AT 1:00 PM CT**

**40 TAXABLE ACRES ± • 2 TRACTS**  
 Property Address: Billy Creek Trail, Novinger, MO  
 Legal Description: SW 1/4 NW 1/4 Sec 18 T62 R17 (Co Rd 189)  
 Tract 1 - 30 Acres ± (Pending Survey)  
 Tract 2 - 10 Acres ± (Pending Survey)  
 • Both Tracts are completely wooded timber  
 • Great Building Sites  
 • Great Whitetail and Turkey Hunting  
 • All utilities present including Rural Water, Electricity, and Fiber Optic Internet  
 • Hardtop Highway 149 Road Frontage on Tract 1  
 • Gravel Road Frontage on Tract 1 and 2 (Billy Creek Trail)  
 • Internal Roads/Trails on both tracts  
 • Potential food plot locations on both tracts

**DONALD & JANIE SHULTZ**  
 Auction Manager: Louie Zinn (319) 795-2314

**BigIron** **SULLIVAN AUCTIONEERS**  
 (844) 847-2161 | www.SullivanAuctioneers.com



**McAfee Auction Service, LLC**  
 375 S Johnson • Kahoka, MO  
 660-727-3796  
 www.mcafeeauctionservice.com

**TIMED ONLINE ONLY HAY AUCTION**  
**LOTS START ENDING AT 10 AM ON TUESDAY AUGUST 29<sup>TH</sup>**



**600 BALES**  
**ALSO SELLING 56 BALES OF STRAW**  
 Preview: 4 miles Northwest of Williamstown, MO on Rte. A.  
**PICK UP BY APPOINTMENT ONLY**  
**CONTACT CLINT 660-341-3837 TO ARRANGE PICKUP**  
**BRISCOE FARMS/ CLINT BRISCOE, SELLER**



**McAfee Auction Service, LLC**  
 375 S Johnson • Kahoka, MO  
 660-727-3796  
 www.mcafeeauctionservice.com

**ADAIR CO, MO REAL ESTATE AND PERSONAL PROPERTY ESTATE AUCTION**  
**SATURDAY SEPT 9<sup>TH</sup> - 10 AM**  
 Sale conducted onsite located at 16626 Rolling Hills Rd. Novinger, MO



Rural Adair Co. Property  
 4.1 +/- Ac  
 3BR, 2 Bath (1998)  
 Manufactured Home  
 30X36 2 car garage  
 Other buildings

**OPEN HOUSE: Sunday, August 27<sup>th</sup> 1-2 PM**



Also selling Classic 1927 Chevy 2 door sedan, 1962 Chevy 4WD, 2002 GMC Sonoma, Shop Equip., Tools & Misc Other Items



**COMPLETE DETAILS & PHOTOS ONLINE!**  
**LARRY W. BELCHER, ESTATE**



**McAfee Auction Service, LLC**  
 375 S Johnson • Kahoka, MO  
 660-727-3796  
 www.mcafeeauctionservice.com

**Lewis County, MO**  
**LAND AUCTION**  
 Sale Conducted at the Gather Event Venue,  
 Located at 507 Clark St., Canton MO  
**SATURDAY, SEPT 16<sup>TH</sup> - 10 AM**  
**282 ACRES/ 3 TRACTS**  
 (SUBJECT TO FINAL SURVEY)



The Maples tracts of land offer well maintained grassland, woods, water structures and homestead.  
 Lying in Sect. 10 & 15, Twp. 62N, R6W Lewis County MO

**RICHARD & WILMA MAPLES ESTATE**

**NEMO Trader Classified**  
**COUPON**  
**2 Classified Ads for \$5.00**  
 20 cents per word over 20 words  
 For an additional \$1.00 run in the Wednesday Kirksville Daily Express one time. For an additional \$2.00 run in both the Wednesday and Saturday Kirksville Daily Express.  
 Must be Mailed in or brought in along with payment.  
*Picture Ads Not Included with Coupon!*

**Choose Classification**

Agri-Business     Real Estate Rentals     Yard Sales  
 Announcements     Real Estate Sales     Auctions & Estate Sales  
 Employment     Recreation  
 Financial     Services  
 Merchandise     Transportation

**Ad No. 1 Each Box Represents a Word (20 words or less)**


**Ad No. 2 Each Box Represents a Word (20 words or less)**


Name \_\_\_\_\_  
 Mailing Address \_\_\_\_\_  
 Phone Number \* \_\_\_\_\_  
 this is required\*  
**PO Box 809 Kirksville, MO 63501 • 660-665-8500**

# LIVE ON-SITE CONSIGNMENT AUCTION

## SATURDAY, AUGUST 26, 2023 \* 9:00 AM

### LOCATION: 100 Industrial Parkway, GALLATIN, MISSOURI 64640

Located 1 mile West of Gallatin on Hwy. 6, Gallatin Industrial Park



PLEASE NOTE: PARTIAL LISTING. MORE TO ADD NEXT WEEK, OR CHECK ONLINE FOR THE UP TO DATE LISTINGS. EXPECTING 1,000 PIECES, MANY INDIVIDUAL CONSIGNMENTS, RETIREMENT, ESTATES, SELLOUTS

#### TRACTORS, LOADERS (Expecting 75-100 Tractors) John Deere

'12 JD 8360R, Cab, MFWD, F and R Duals, IVT, 6346hrs  
JD 8270R, Cab, 4x4 Duals, 8898hrs  
JD 9520, 4wd, duals, recent OH, Bareback 5114h  
JD 5085E w/Ldr, Cab, Mfwd, 997hrs  
JD 6105M w/Loader, MFWD, 4634hrs  
JD 7130, LDR, MFWD, 16spd, 2090hrs  
JD 6430 w/Loader, MFWD, 24speed, 6500hrs  
JD 8420, MFWD, Cab, 6194hrs  
JD 8410, MFWD, Duals, PS, 1000pto, 8724hrs  
JD 6615, Ldr, cab, MFWD, 3702hrs  
JD 6410 w/Loader, 2wd, loader, C/H/A, new rubber 3,817hrs  
'20 JD 4052M HD, LDR, 49hrs, MFWD  
JD 8960, 4wd, duals, 10k hrs  
JD 8770, 4wd, 10,316hrs  
JD 8570, 4wd, 8500 hrs, 3 pt, pto, JD 5410 Cab, 2wd  
JD 1026R, 60" Deck, FWA. 573 hrs  
JD 4455 w/Cab, mfw, O/H less than 150hrs ago, 6554hrs  
JD 4850, mfw, 15spd PS, 3 SCV, 4750hrs  
JD 4250, cab, 4130hrs  
JD 4440, cab 4743hrs  
JD 4430, cab, Extremely clean  
JD 4300 w/Loader, 3051hrs  
JD 4650, MFWD, 1000 PTO, 8607hrs  
JD 3010, gas

**CASE IH/INTERNATIONAL**  
CIH 435 Steiger, 4wd, duals, guidance, 5465hrs  
'20 Case IH 125, ldr, 1274hrs, clean  
CIH Maxxum 115 w/loader, C/H/A, MFWD, 4887hrs  
'21 CIH 95A, w/Loader C/H/A, 40hrs  
'13 Case IH Farmall 95C, 5634hrs, 2wd, C/H/A  
Farmall 75C, MFWD, C/H/A, 781hrs  
CIH JX100U, w/Loader, cab, 4x4, 3641hrs  
CIH JX95 w/Loader, C/H/A  
CIH MXM130, MFWD, C/H/A, duals, 5598hrs  
IH 1086, Cab  
IH 1066 Tractor, Loader, open station  
IH 666, gas  
IH 656, diesel  
IH 5088, 2wd, 7605hrs  
Case 2590, Cab, 6554hrs  
Case 4890, 4x4, 3 pt, pto, 5388hrs

**NEW HOLLAND/ FORD**  
'15 New Holland T8.410, mfw, clean  
NH TG255, Cab, Mfwd, 8203hrs  
NH TD5040, Mfwd, canopy, orops, 5 hrs  
Ford 3000, diesel, 2476hrs  
Ford 7700, 2wd, 4125hrs  
Ford 1600, 2wd, 1520hrs

**KUBOTA/MASSEY FERGU-  
SON/MCCORMICK**  
McCormick MC120, ldr, cab, mfw, 5089hrs  
Kubota M7-152 deluxe, mfw, cab, 230hrs  
Kubota M7-151 premium KVT, 3070hrs  
Kubota M108S w/Loader, MFWD  
Kubota MX5000 w/Loader, MFWD, 1218hrs  
Kubota BX1860, w/Loader, 4wd, 366hrs  
Kubota M105S, ldr, mfw, 7470hrs  
Kubota LX3310, w/ldr, Mfwd, Cab, 75hrs  
MF 1533, w/Ldr, 890hrs  
MF 5464 w/Loader, MFWD, Cab, 4920hrs  
'11 MF 5465 w/MF950 Ldr, 900hrs, 1 owner  
MF GC1715, LDR, Mfwd, 168hrs  
Kioti CS2210, MFWD, Ldr, 57hrs  
Mahindra 6065 w/ldr, Cab, MFWD, 554hrs  
Deutz DX120, Cab, 7867hrs  
MF 230, gas

**LOADERS**  
JD 58 Ldr / Grapple  
JD 553 Loader  
JD 740 Loader

**COLLECTOR OR  
MECHANICS SPECIAL**  
Farmall Cub, w/Belly Mower (non-running)  
Kubota MX5100, 2wd, 2947hrs  
Case 970 Comfort King  
Ford 600 Tractor  
JD R Tractor, diesel, runs  
Ford 8n

**MEZGER ESTATE**  
'12 Ford F150, 128K 4x4  
JD 4430 Tractor, C/H/A  
JD 5402 w/Ldr, 1304hrs, Mfwd 3pt  
JD 4200 w/ldr, 1675hrs, belly mower  
JD Gator 2x4, nice  
Herd Seeder  
'13 18ft utility Trailer  
Hurricane #24 Pull type Ditcher  
3 Point Chisel-10ft  
JD MX7 Brush Cutter  
Danuser 3 pt Auger, 2 bits  
Caldwell 3 pt blade  
2 yd PT Dirt Scraper  
Oliver 3 btm Rollover Plow

**COMBINES, HEADERS,  
HARVEST**  
Gleaner R62, 4369/3170hrs, 4wd, Lat-tilt,  
'05 NH CR940 3560/2615hrs, Ag-leader, 4x4  
NH CR960 Combine 4200hrs/3300hrs  
NH TR97 Combine, 5397hrs  
CIH 2166 Combine-5945hrs, 4wd

**CORN HEADS**  
'07 Drago 1820 18r20in, Lexion

CIH 3408 Corn head, 8R30, Corn Savers, CM Shafts  
CIH 2212, 12R-30"  
CIH 2206, 6R-30"  
CIH 1083 8R-30"  
CIH 1083 8R-30"  
JD 608C, 8R-30", stalk master  
JD 693, 6R-30"  
JD 893 8R-30"  
JD 843 8R-30"  
JD 343, 3R-30"  
NH 6-30"

**PLATFORMS/DRAPER**  
JD 630FD, draper, 30'  
JD 925F  
CIH 2020, 35'  
CIH 2020, 30'  
CIH 2020, 25'  
CIH 1020, 30'  
CIH 1020, 16.5'  
JD 915, 15'  
JD 216, 16'  
JD 220, 20'  
JD 213, 13'  
JD 220, 20'  
NH 973, 20'  
NH 973 bean platform  
AC 320 - w/head trailer

**HEAD TRAILERS**  
EZ Trail 680 HT  
Head Hunter Classic 32'  
**UNUSED/HEAD TRAILERS**  
2-IA 420 20'  
2-IA 425, 25'  
2-IA 430 30'  
2-IA 836, 36'

**GRAIN CARTS**  
Kinze 1300, scales  
Kinze 1100, Tracks, Scales  
Kinze 1100  
Kinze 1050  
Kinze 851, NICE  
Brent 1080, scales  
Unverferth 9250  
Frontier GC1105, 550bu  
A&L 425 Auger Wagon  
JD 1210A

**GRAVITY WAGONS/  
WAGONS/OTHER**  
3-Artsway BIG LITTLE DM280  
Gravity wagons - 3 matching wagons  
DMI Gravity Wagon  
Killbros 250 Gravity Wagon  
Westendorf 250 Gravity Wagon  
Killbros 225 Gravity Wagon  
Stan hoist Barge Wagon  
Kewanee 250 Gravity Wagon  
EZ Trail Gravity Wagon -320bu  
Parker 200 Gravity Wagon  
Parker 220 Gravity wagon  
Woods Lo Load Wagon  
EZ Trail 3400 Gravity wagon  
340bushel  
Wood Barge Wagon  
McCormick Steel Side Wagon, NICE

Airstream 1112 Grain Dryer  
Hi-Cap 548 Grain Cleaner  
Rem 2500 HD Grain Vac  
**AUGERS/CONVEYORS**  
Westfield 13x92 w/hopper  
GSI 12x84 w/hopper  
2-Mayrath 10x70  
Brandt Grain Belt 1535TD, Electric Top Air  
Conveyor, electric, seed conveyor  
Westfield 100-41

**SEED TENDERS**  
Meridian Titan II Seed Tender  
ParKan Seed Tender, Goose-neck scales  
Unverferth 2750 Seed Runner  
Friesen 220 Seed Tender  
**MANURE SPREADERS/  
APPLICATORS**  
'15 Hagie STS12, 2500hrs, 2 ownr, 1200 ga, SS tank, Ag Leader Steer command center-Machine is loaded  
Terragator TG7300 Sprayer, 60ft, flood  
Red Ball 570 Sprayer, 90' Boom, 1200 ga  
Hardi Commander 750 Sprayer  
Kuker 500 ga, PT, 45ft booms nozzles, SS1600Ga tank  
Top Air 500 Gallon Sprayer  
JD 4930 Sprayer booms  
Dalton Mobility 800, variable rate  
Chandler Spreader, tandem, litter  
Adams Liquid Nurse Trailer  
Automatic Brand Mist Blower  
Demco Saddle Tanks, Late model  
Dalton 9 knife Applicator  
Dalton 13 knife Applicator  
New Idea 3726, flotation tire, nice  
Kelly Ryan Manure spreader  
CIH 550 Spreader  
Milcreek Turf 75TD  
New Idea 217 Spreader  
IH 100 Manure Spreader  
Adams Tender Trailer, semi trailer, Air Brakes

**FORAGE EQUIPMENT,  
FEEDING EQUIPMENT  
GRINDER MIXERS/MILLS**  
2-NH 352 Grinder Mixer, Folding Auger  
NH 355 Grinder  
NH 358 Grinder Mixer  
JD 3970 Chopper, Pickup head only  
Gehl 1260 Chopper  
Gehl 1200 Chopper, 3 RN head, Pickup head  
Grain-o-Vator Feed wagon  
Meyer 20ft, 13ton wagon-HD gear  
Corey Silage Wagon  
Schuler 125BF Manure Spreader  
JD Silage Wagon  
Knight 3025 Reel Augie Wagon  
2 -Vermeer BP8000 Bale Processors

**PLANTERS, DRILLS,  
SEED TENDERS**  
**DRILLS**  
'12 Kinze 3660, Bulk Fill, liquid  
'12 Kinze 3600, Bulk fill, clutches  
2008 Kinze 3800SDS 24R30 Bulk Fill No Till  
05 Kinze 3500, NT, Liquid Fert  
Kinze 3600, 12-23, box ext, trash whips, NT  
'01 Kinze 3700 24R20  
Kinze 3500, 8-15, New no till, yetters  
Kinze 2-Kinze 3200, 12-30. No till  
Kinze 3000, no till, 6-11

Kinze PT6 6-11, no till  
Kinze 3650SDS, Bulk fill  
Case IH 1200 16-30  
Kinze 24-20 planter, Older  
JD 1770NT CCS, Refuge box, KSI conveyor 16-30  
JD 1770 Cons, 16-30  
White 6180 Planter, 12r30  
CIH 1240 Early riser, Bulk Fill  
JD 7200 Cons, 16-30  
JD 7000 4-38, no till  
JD 7000 6-30  
JD 7000 4 row, fert boxes  
IH 2 Row  
GP ADC 1150 Air Drill  
JD 1990, 15" 40ft, iso  
JD 750 15" 7.5  
JD 1530 Drill, 15', JD 1570 caddy  
JD 750, 15'  
JD 1520 Dill, 20ft, no till, grass seed

GP SS24 Grain Drill  
Tye 1501 Drill, 15ft  
GP SS15 drill, 3pt  
GP SS15 NT Caddy  
GP SS15 Grain Drill w/Caddy  
GP SS30 Drill, No till  
Atchison 3016C Grain Drill

**VEHICLES, ATVS,  
LAWN MOWERS**  
**GRAIN TRUCKS/TRAILERS**  
'06 Kenworth T600, C15 Cat, 10spd  
'17 IH Durastar 4400, twinscrew, 238k  
'81 IH S1700 Dump Truck  
'06 Ram 1500, 2 dr., 157,460 mi  
'05 Ford F450 XL SD, PS V8, 4dr, 175k  
'16 Ford F350 SD XLT, 6.7  
'15 Ford 350, Bramco Bale bed, reg cab, 97k gas  
'02 Chevrolet Silverado 2500hd, 317,419 mi  
'05 Ford F150XLT, 5.4 triton, 237k  
Ford F800 Diesel, 139,446 mi, grain truck  
Chevrolet C-65 Grain Truck, 109703mi

**TRAILERS, CONTAINERS, MISC**  
IA 990 Ga, Fuel Tank  
Small animal Trailer, for field to field  
4 -40ft Storage Containers  
IA 14000lb Bridge  
Woodworth 8 bale, GN Trailer  
'74 WW GN trailer 3axle  
Trail west Stock Trailer, Dual Axle  
S&H Stock Trailer, Dual axle  
'77 Phillips Stock Trailer  
'87 Trail King Lo-Boy, Hyd Dove, Winch  
'14 Big Tex Trailer, 30ft  
'10 Felling Pintle Hitch Trailer, Air Brakes, 20ton  
'11 Wink 39ft end dump, 102 wide, super singles

**ATV/UTV/BOAT/MOWERS/  
MOTORCYCLE**  
Polaris Ranger 700EFI, 519hrs  
Scag Walk Behind Mowers  
'11 Bighorn by Heartland Camper w/5th wheel  
**SKIDLOADER ATTACHMENTS  
(ALL ATTACHMENTS ARE  
NEW AND WILL SELL WITH  
NO RESERVE)  
ALL ATTACHMENTS ARE  
SKID STEER QUICK ATTACH  
OVER 350 ATTACHMENTS  
TO SELL**

Jenkins 84" extreme HD Grapple  
JCT Brush cutters, post augers, grapples, sweepers  
Stout Brand, grapples, material buckets  
Lowe Post augers  
Tuff Ox Tree pullers, Container items, tool boxes, attachments, bathrooms, 40ft 4 bay container

**CONSTRUCTION**  
**EXCAVATORS**  
'08 Deere 200DLC, 9041hrs  
Bobcat E351, C/H/A, HQA, 350hrs  
'21 Bobcat E50, 140hrs, thumb  
JCB 803, 2900hrs, cab  
**SKID STEERS**  
'21 Kubota SVL97-2s, 80hrs, loaded  
'21 Kubota SVL75-2s, 630hrs, EROPS  
'18 Kubota Sv195-2s, 2519hrs, 2spd, new tracks, Erops  
'18 Kubota Sv195-2s, 2663hrs, 2spd, Erops  
'19 Bobcat T770, 1750hrs, Erop, 2spd  
'19 Bobcat T770, 382hrs, Ride Control  
'14 Case SV300, 1150hrs  
'13 Case SV250, Orops, 3758hrs.  
Deere 325G, Cab, 1404hrs  
Deere 331G, Hyd, Erops, 1404hrs  
Gehl R190, orops  
Bobcat S220, turbo, 4022hrs  
'07 Case 420CT, 3222hrs, orops  
Case TV380, 2602hrs, Erops  
Cat 259D, 1181hrs, 2spd, Erops

**BACKHOES/LOADERS**  
Caterpillar 926M, HQA, Aux Hyd, excellent rubber, 7236hrs  
Cat 930 Wheel Loader, 8620hrs, HQA, Erops  
Cat 930 Wheel Loader, 9904hrs, Erops  
Deere 644EZ Wheel Loader  
'13 Case 580 Super N WT,  
Backhoe, 4x4, extend a hoe, 2448hrs.  
Case 580 Super L, MFWD, Ext-a-hoe, 6109hrs  
**DOZERS**  
2017 Caterpillar D5K2 LGP, 6371hrs, Excellent undercarriage  
Komatsu D31A Dozer  
**OTHER CONSTRUCTION**  
'98 Champion 710A V, 2079hrs, CLEAN Road Grader  
Deere 670CH, 1880hrs, power-shift Road Grader  
Caterpillar 627B Scraper, excellent machine  
Sky Track 4266, 3320hrs, orops  
Bomag K300 Pad Foot Roller, 1549 hrs  
Cat Loader Jib  
Cat Loader, Sheeps foot  
Pull type Sheeps Foot

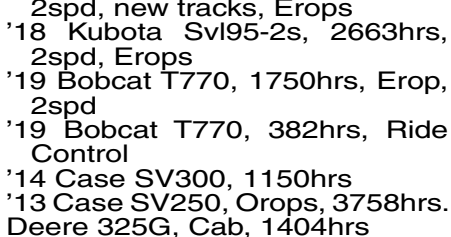
**HAY EQUIPMENT  
BALERS/MOWERS/TEDDERS/  
RAKES**  
**MOWERS**  
JD 946 Moco, flails  
NH 7330 PT, 540 pto, Moco  
NH 465 Disc Mower  
3-NH 617 Disc Mowers  
NH 461 Moco  
'20 Kowalski Z001/2 Mower  
**RAKES**  
Kubota RA212CR, 12 wheels  
Vermeer R2300 Rake  
Vermeer R21A Rake  
H&S High Capacity 18 wheel rake  
Kelderman 10 Wheel Rake  
Allis Chalmers Side Delivery  
Ford 504 3pt rake  
AG-Equip 2 basket Tedder, Like new

**BALERS**  
JD 469 Mega wide, 4x6, twine, net/twine  
JD 530, twine  
Mainero 5887, 5x6, twine, net  
NH BR7090 Baler, twine, gathering wheels  
NH 848, twine  
Vermeer 505 Super I Baler  
Gehl TDC 1475 Baler  
NH 320 Hay Liner  
'15 JD 338 Square Baler, 1 owner  
**3 POINT EQUIPMENT,  
MISC EQUIPMENT**  
JD 72" Mower deck for lawn tractors  
7ft 3 pt Brush cutter  
Tractor Dozer Blade  
Hay Bale Carrier  
IA 190 3-point Blade 8' hyd  
'19 Rain Flo 345 Mulch Layer  
Hay Rack/ JD Gear  
Landpride RBT45108 Blade  
Landpride FDR1672 Finish Mower  
Wood Wagon w/End gate seeder  
Several 3 point blades  
BH Razor Back BH6  
Woods PRD 7200 mower  
Euro Seeder-cone  
BH SQ840  
Several Bale Carriers  
7' Brush Cutters  
Side Winder 6' Tiller  
BH 3008 cutter  
Gehl STR72-2 Seeder  
Farm king 3-point cultivators 5ft and 6ft  
Danuser Auger 2 bits,  
Several 3 point disk  
Several Pull type Box Blades  
JD 155, 3pt hyd blade  
**BRUSH CUTTERS/  
FINISH MOWER**  
2-Bushwhacker MD144 Brush cutter  
IA MF12 Brush Cutter  
JD HX20, 20ft  
JD MX10 Brush Cutter  
Landpride RCR3510, 10ft  
Landpride 15"  
Bushhog 2615 Legend  
Bushhog 2715 Legend  
Rhino SE15 Brush Cutter  
Woods 15ft Batwing  
3 Point Ditcher

**CATTLE EQUIPMENT**  
3- Tarter Cattle Sweeps  
Feed King Creep Feeder  
60 Free Standing Cattle Panels  
Melroy Concrete Water  
2- IA 84R Silage Feeders  
IA 625 Bale Wagon  
**DISKS, VERTICAL TILLAGE**  
'20 CIH 375 Disk, only used on 240acres  
Summers MFG, Super Coulter Plus  
GP Turbomax 1000, 10ft  
JD 630, 24'  
White 271 20'  
IH 490, 27.5  
IH 496 Disk, 18.5ft  
**FIELD CULTIVATORS**  
JD 2210, 36' Harrow  
GP 53ft Field Cultivator  
GP Disc O-Vator, 24'  
JD 985 Cult, 40'  
CIH 4300, 36'  
IH 4600 24ft Cultivator  
Kewanee 3100 30ft  
IH 45, 24.5ft  
Krause 4100, 24ft  
**OTHER**  
CIH MRX690 Disc Ripper  
JD 915 ripper, 7 shank, nice  
J&J 15ft Crop Roller, Pull type  
JD 400 Rotary hoe  
JD RM 6 row Cultivator  
JD RM 4 Row Cultivator

**BandSequimentSales.com**  
**Office: 660-663-3363**  
**Shay Esbeck: 660-605-0839**  
**Justin Harlow: 660-605-2346**  
**Find us on facebook @ BS-Equipment-Auctions**  
TERMS: Cash, check w/proper ID. Nothing removed until settled for. Not responsible for theft, accident or inadvertent errors in advertising. Statements made day of sale take precedence over printed material. Sale bill subject to change. Call for item availability.

**This is a LIVE AUCTION,  
Online bidding available  
through Equipments**  
**ALL ITEMS MUST BE REMOVED FROM AUCTION YARD  
WITHIN 15 DAYS. NO EXCEPTIONS!**



Page 4 · Section B

## Antiques Coins and Toy Tractor Auction

**2705 Main St Unionville Mo 63565 • August 19th at 10 am**

**TOY TRACTORS WILL SELL IN FIRST HALF HOUR:** Precision John Deere in box 4020, 4000, A, A w/ cultivator, 70, 4020 diesel, other John Deere in box 4010, E, M, 5200, 8870, 7800, 3010, 820, row crop, R, D, MFWD row crop, overtime, 60 orchard, 630 LP, GP, Farmall F20, there are a few not in box, also a few implements, Napa semis and truck, semis in boxes, die cast in and out of boxes, pressed tin toys, Peterbilt auto carrier in box, tractor signs, tractor seats, John Deere bicycle in very good condition. Coins will sell at 12: Several nice Morgan dollars random dates, several walking liberty halves, Kennedy halves. Antiques: Metal signs to include 2 Hatchery, large sign with a chick on it, Calf Mana, Goochs Feed chalk sign, Toms Peanut, Pepsi Thermometer, Porcelain Frosts Herefords, Porcelain Michigan Milk, Unionville Mo Burns tractor thermometer, Unionville Mo Lathrop Drug sign, several Unionville adv pieces, History NE Mo 2 book set, 1800s cylinder music box, Edison cylinder record player and several records, thick Edison records, ice saw, 5 gal Blue ribbon crock, several local real photos, Michelob light, Pepsi clock, Bakelite silverware set, Lauson engine, Early Putnam Atlas, several old books, Jenkins tractor seat, corbels, 2 mini or salesman White Mountain ice cream freezers, several jars of marbles, old tools, wood boxes, several trunks, coal hod, barn lanterns, several nice Stanley planes and tools some of the planes are 5 1/4, 45, 71, 5, 45 w/ cutters in box, 193, 13, and more, KK plane, Billings Spencer tools, newspapers, buckets, several Hallmark ornaments, license plates, egg basket, price guide books, pig weathervane, carnival glass punch set, red and green depression glass, sad irons, bells, Cl kettle, enamel kettles, string holder, Pyrex, several types of scales, mantle clock, Dazey churn, large cast iron horse head for post, pulleys, local yearbooks and maps, Skoal clock, framed prints, blue fruit jars and lids, quilts, Starlog magazines, several advertising tins, Pioneer and other stereo items, funnels, Production Credit Association clocks, lighters, DAV tags, barbies, GI Joe, Staley chicken feeder, etched glass window out of door, safe, small Cl kids stove, Rainbow door push from Lucerne gas station, Pepsi crate, runner sleds, cream cans, pitcher pump, metal lawn chair, bank bags, East End Cemeteries of Putnam Co. Very large Auction folks plan to spend the day. Preview from 2 to 5 pm on August 18th. Sit down type sale in a climate-controlled building.

Food and restrooms available. **Check out pictures on the website at [www.altiserauctionandappraisal.com](http://www.altiserauctionandappraisal.com).**



**ALTISER**  
AUCTION & APPRAISAL  
KRIS ALTISER  
660-626-4960

**SEE OUR FACEBOOK PAGE FOR PHOTOS**

High

Knox County

20 ACRES M/L

# LAND AUCTION

Sellers: Keith & Karen Zimmerman

Auction will be held at the property at  
**47735 State Hwy M  
Rutledge MO 63563**

## Tuesday, September 12, 2023 @ 6:00 p.m.







This 20 acre property is located on Hwy M, 4 miles south of Rutledge Missouri. (or 1 mile North of the M & K Junction.) Improvements include a 2000 Clayton 16x80 mobile home (setting on concrete pillars) with a 12x20 addition with full basement/storage room. This 3 bedroom, 2 bath home has had the floor plan somewhat modified in order to create optimal storage space. You definitely will want to check it out! The kitchen has an adjoining walk-in pantry and the addition to the back of the house adds more space as a laundry/mudroom/storage room combo. Stairs from there lead to the basement where you will find additional storage space, water heater, etc. The house has a propane forced hot air furnace w/ central AC. There is a detached 18'x25' carport for outdoor storage. The gravel driveway circles around the back of the house making a spacious parking area. The Zimmerman family has made many improvements to these 20 acres since 2016. This property, of almost solid timber, has everything a family would dream of for living in the country. There is a nice pond (new in 2021) for swimming, swings, sandbox, and play area. There are trails leading through the timber to a vintage camper used for a playhouse. This timber, full of mostly white oak trees, also offers some excellent deer hunting as well! You will not want to miss this one!

To view this property, contact Keith @ 660.341.7678

Land is generally located in Section 14, Township 63, Range 11 West, Knox City, Mo.













**High Auction Service LLC** Downing Mo - Randy High 660.216.0515

[www.highauctionservice.com](http://www.highauctionservice.com) e-mail: [highauctionservice@gmail.com](mailto:highauctionservice@gmail.com)

Cash or check with proper ID. Not responsible for accidents or theft. Announcements day of the sale take precedence over any advertising.

Your message has

# MUSCLE

In the

# CLASSIFIEDS!

**BOOST YOUR BUSINESS WITH NEWSPAPER ADS.**  
Ask about our affordable rates to fit any budget!

Call us for all your advertising needs. **660-665-8500.**

Call about our classified ad specials. **660-665-8500.**

## Casady-Luscan FUNERAL SOLUTIONS

Celebrating One Family At A Time

**Full Funerals beginning @ \$4,995**  
**Direct Cremation \$1,495**

Owners:

Howard Luscan  
Funeral Director/Embalmer

Casandra Casady-Luscan  
Office Manager/Funeral Director

355 West Front Street  
Green Castle, MO 63544  
**660-265-6425**



Semi Annual  
Midwest  
Draft Cross & Quarter  
Horse Sale



**THURSDAY & FRIDAY  
AUG. 24 & 25, 2023**  
at the Timberline Arena  
23783 320th St. Jamesport, MO

**PREVIEW THURSDAY, AUG. 24**  
PREVIEW 1-3 P.M.  
ROPE HORSE PREVIEW 3:00 - 4:30 P.M.  
Selling 100+ Colts, Mares & 2 yr. olds  
THURSDAY 5 p.m.

**Selling 250+ Broke Horses**  
FRIDAY, AUGUST 25 AT 9 a.m.

Call for Catalog  
Marion Kramer: 660-973-5098  
Alvin Detweiler: 660-684-6974  
Jacob Gingerich: 660-684-6942



**SCOTTY'S AUCTION SERVICE**

573-356-4405

Auctioneer: Scott Kuntz

SEE MORE PHOTOS ON SCOTTY'S WEBSITE

[WWW.SCOTTSAUCTIONSERVICE.COM](http://WWW.SCOTTSAUCTIONSERVICE.COM)

**Wonderful Kirksville Family Home & Personal Property Auction**

**Friday, August 25, 2023 at 4:00 p.m.**

Joe Allen

**Directions:** 302 Park Plaza, Kirksville, Missouri. From North Baltimore Street in Kirksville, turn East on Park Plaza for approximately 0.1 mile to the auction location. Watch for signs.

**REAL ESTATE:** This three bedroom, two and a half bath home features a living room, large, eat-in kitchen with two pantries, utility room, and a Jack and Jill style bathroom on the main floor. The full, unfinished basement is partially finished with a large family room with a bar/economy kitchen, a full bath with a walk-in shower and plenty of storage. The home has a 2 car attached garage, electric ceiling heat and central air conditioning. It sits on a quiet city street in a popular neighborhood with mature landscaping and 8' x 10' wooden garden shed.

**DOWN PAYMENT:** 10% of the contract purchase price will be due upon acceptance of the Sales Contract. Personal or Cashier's Checks will be accepted. This is "AS IS, WHERE IS" and is non-refundable. **CLOSING:** Closing shall be within 30 days of the auction date.

**VEHICLE:** 2000 Buick Park Avenue

**HOUSEHOLD ITEMS:** Maytag side by side refrigerator/freezer; wheel chair; handicap walker; Samsung front load washer and dryer; miscellaneous kitchenware; dining room table with 6 chairs and leaf; dining hutch; ornate chest of drawers; Samsung flat screen tv; large wall hanging mirror; ornate lamp table; various end tables; coffee table; Thomasville oak style 5 piece full/queen bedroom set; small curio cabinet; Thomasville dresser with mirror, bed, wardrobe; numerous table lamps; Dyson vacuum cleaner; small appliances; Shark vacuum; numerous side tables; butler's cart;

**ANTIQUES & COLLECTIBLES:** Noritake China; Varvaria China; miscellaneous figurines; Seraphim angel collection; lighted curve front curio cabinet; miscellaneous paintings and prints; large collection of ceramic figurines and statues; Precious Moments figurines; autographed baseballs; Lane cedar chest; Oneida flatware set in wooden case; Christmas decor; ceramics; miscellaneous decorations; cookbook collection; Linden mantle clock; Atari console; Cabbage Patch dolls; regulation slate pool table with leather pockets and accessories; (pool table is taken apart, ready to move)

**TOOLS & OUTDOOR EQUIPMENT:** 8' fiberglass step ladder; 2 wheel dolly cart; Huskee 21" push mower; two metal patio sets; metal patio glider; Toro electric snow blower; long handle tools; metal patio chairs; garden hose reels

There will be many more items at this auction way too numerous to mention.

# Beilstein

## CAMPER SALES

573-655-2254

**CALL US NOW**  
for the best prices...

28248 327th Ave.  
LaGrange, MO • Hwy 61 South,  
4 Miles South of LaGrange, MO



**#375FLF**

**Our Price \$34,995**

**2015 Keystone Montana Mountaineer 375FLF**  
Front Living Room, 5 Slide-Outs



**#801071**

**Our Price \$22,495**

**2022 Salem FSX 169RSK**  
NEW, Rear Queen Bed Slide-Out, Easy to Tow



**#430939**

**Our Price \$32,995**

**2023 Salem Cruise Lite 263BHXLX PLATINUM**  
Super Slide-Out, King Bed and Rear Bunks



**#090420**

**Our Price \$37,495**

**2022 Salem Hemisphere Hyper-Lyte 26BHHL**  
NEW, Top Of The Line, Bunks



**#508801**

**Our Price \$26,995**

**2019 Keystone Cougar Half-Ton 22RBS**  
Slide-Out, King Bed, Rear Bathroom



**#072286**

**Our Price \$6,795**

**2022 Heartland Barlow 20FT FLATBED DOVETAIL**  
NEW

# beilsteincampersales.com

# READY TO CAPITALIZE ON RECORD LAND VALUES?

## CALL THE LAND SPECIALISTS.

Adair Co, 29.3 AC.	Clark Co, 476 AC.	Mercer Co, 25.513 AC.	Putnam Co, 53 AC.	Schuyler Co, 106 AC.
Adair Co, 30 AC.	Clark Co, 608 AC.	Mercer Co, 30 AC.	Putnam Co, 53 AC.	Schuyler Co, 115 AC.
Adair Co, 59.3 AC.	Clark Co, 1135 AC.	Mercer Co, 30 AC.	Putnam Co, 60 AC.	Schuyler Co, 116.3 AC.
Adair Co, 70 AC.	Gentry Co, 117 AC.	Mercer Co, 35 AC.	Putnam Co, 60 AC.	Schuyler Co, 119 AC.
Adair Co, 74 AC.	Gentry Co, 414 AC.	Mercer Co, 36 AC.	Putnam Co, 74.9 AC.	Schuyler Co, 141 AC.
Adair Co, 77 AC.	Grundy Co, 41.5 AC.	Mercer Co, 37 AC.	Putnam Co, 76 AC.	Schuyler Co, 146 AC.
Adair Co, 80 AC.	Grundy Co, 42.2 AC.	Mercer Co, 40 AC.	Putnam Co, 79 AC.	Schuyler Co, 160 AC.
Adair Co, 80 AC.	Harrison Co, 80 AC.	Mercer Co, 40 AC.	Putnam Co, 80 AC.	Schuyler Co, 161 AC.
Adair Co, 80 AC.	Harrison Co, 94 AC.	Mercer Co, 40 AC.	Putnam Co, 80 AC.	Schuyler Co, 161 AC.
Adair Co, 80 AC.	Harrison Co, 160 AC.	Mercer Co, 41.5 AC.	Putnam Co, 80 AC.	Schuyler Co, 183 AC.
Adair Co, 80 AC.	Harrison Co, 312 AC.	Mercer Co, 42 AC.	Putnam Co, 81 AC.	Schuyler Co, 198 AC.
Adair Co, 80 AC.	Harrison Co, 1785 AC.	Mercer Co, 46 AC.	Putnam Co, 82 AC.	Schuyler Co, 300 AC.
Adair Co, 80 AC.	Harrison Co, 1785 AC.	Mercer Co, 46 AC.	Putnam Co, 86 AC.	Schuyler Co, 700 AC.
Adair Co, 80 AC.	Harrison/Mercer 1529 AC.	Mercer Co, 50 AC.	Putnam Co, 96 AC.	Scotland Co, 34 AC.
Adair Co, 80 AC.	Knox Co, 20 AC.	Mercer Co, 52 AC.	Putnam Co, 97 AC.	Scotland Co, 37 AC.
Adair Co, 80 AC.	Knox Co, 78 AC.	Mercer Co, 62 AC.	Putnam Co, 99 AC.	Scotland Co, 37 AC.
Adair Co, 80 AC.	Knox Co, 105 AC.	Mercer Co, 70 AC.	Putnam Co, 100 AC.	Scotland Co, 78 AC.
Adair Co, 80 AC.	Knox Co, 105.6 AC.	Mercer Co, 72 AC.	Putnam Co, 100 AC.	Scotland Co, 82 AC.
Adair Co, 80 AC.	Knox Co, 108 AC.	Mercer Co, 75 AC.	Putnam Co, 101 AC.	Scotland Co, 84 AC.
Adair Co, 80 AC.	Knox Co, 120 AC.	Mercer Co, 75 AC.	Putnam Co, 103 AC.	Scotland Co, 107 AC.
Adair Co, 80 AC.	Knox Co, 140 AC.	Mercer Co, 75 AC.	Putnam Co, 103 AC.	Scotland Co, 116 AC.
Adair Co, 80 AC.	Knox Co, 310 AC.	Mercer Co, 78 AC.	Putnam Co, 105 AC.	Scotland Co, 121 AC.
Adair Co, 80 AC.	Knox Co, 47.43 AC.	Mercer Co, 80 AC.	Putnam Co, 108 AC.	Scotland Co, 121 AC.
Adair Co, 80 AC.	Lewis Co, 80 AC.	Mercer Co, 80 AC.	Putnam Co, 108 AC.	Scotland Co, 127 AC.
Adair Co, 80 AC.	Lewis Co, 80 AC.	Mercer Co, 81 AC.	Putnam Co, 110 AC.	Scotland Co, 127 AC.
Adair Co, 80 AC.	Lewis Co, 80 AC.	Mercer Co, 82.8 AC.	Putnam Co, 111 AC.	Scotland Co, 135 AC.
Adair Co, 80 AC.	Lewis Co, 80 AC.	Mercer Co, 90 AC.	Putnam Co, 120 AC.	Scotland Co, 140 AC.
Adair Co, 80 AC.	Lewis Co, 80 AC.	Mercer Co, 90 AC.	Putnam Co, 120 AC.	Scotland Co, 169 AC.
Adair Co, 80 AC.	Lewis Co, 80 AC.	Mercer Co, 100 AC.	Putnam Co, 120 AC.	Scotland Co, 231 AC.
Adair Co, 80 AC.	Lewis Co, 80 AC.	Mercer Co, 103 AC.	Putnam Co, 121 AC.	Scotland Co, 246 AC.
Adair Co, 80 AC.	Lewis Co, 80 AC.	Mercer Co, 110 AC.	Putnam Co, 127 AC.	Scotland Co, 265 AC.
Adair Co, 80 AC.	Lewis Co, 80 AC.	Mercer Co, 110.7 AC.	Putnam Co, 130 AC.	Scotland Co, 307 AC.
Adair Co, 80 AC.	Lewis Co, 80 AC.	Mercer Co, 115 AC.	Putnam Co, 140 AC.	Scotland Co, 355 AC.
Adair Co, 80 AC.	Lewis Co, 80 AC.	Mercer Co, 117 AC.	Putnam Co, 140 AC.	Scotland/Clark Co, 19 AC.
Adair Co, 80 AC.	Lewis Co, 80 AC.	Mercer Co, 118 AC.	Putnam Co, 140 AC.	Shelby Co, 60 AC.
Adair Co, 80 AC.	Lewis Co, 80 AC.	Mercer Co, 118 AC.	Putnam Co, 157 AC.	Shelby Co, 62.9 AC.
Adair Co, 80 AC.	Lewis Co, 80 AC.	Mercer Co, 120 AC.	Putnam Co, 160 AC.	Shelby Co, 102 AC.
Adair Co, 80 AC.	Lewis Co, 80 AC.	Mercer Co, 120 AC.	Putnam Co, 160 AC.	Shelby Co, 170.14 AC.
Adair Co, 80 AC.	Lewis Co, 80 AC.	Mercer Co, 120 AC.	Putnam Co, 160 AC.	Shelby Co, 220.96 AC.
Adair Co, 80 AC.	Lewis Co, 80 AC.	Mercer Co, 120 AC.	Putnam Co, 160 AC.	Sullivan Co, 36.2 AC.
Adair Co, 80 AC.	Lewis Co, 80 AC.	Mercer Co, 120 AC.	Putnam Co, 160 AC.	Sullivan Co, 38.8 AC.
Adair Co, 80 AC.	Lewis Co, 80 AC.	Mercer Co, 120 AC.	Putnam Co, 169 AC.	Sullivan Co, 39 AC.
Adair Co, 80 AC.	Lewis Co, 80 AC.	Mercer Co, 120 AC.	Putnam Co, 170 AC.	Sullivan Co, 40 AC.
Adair Co, 80 AC.	Lewis Co, 80 AC.	Mercer Co, 120 AC.	Putnam Co, 170 AC.	Sullivan Co, 40 AC.
Adair Co, 80 AC.	Lewis Co, 80 AC.	Mercer Co, 120 AC.	Putnam Co, 177 AC.	Sullivan Co, 60.8 AC.
Adair Co, 80 AC.	Lewis Co, 80 AC.	Mercer Co, 120 AC.	Putnam Co, 185 AC.	Sullivan Co, 64.2 AC.
Adair Co, 80 AC.	Lewis Co, 80 AC.	Mercer Co, 120 AC.	Putnam Co, 188 AC.	Sullivan Co, 73 AC.
Adair Co, 80 AC.	Lewis Co, 80 AC.	Mercer Co, 120 AC.	Putnam Co, 195 AC.	Sullivan Co, 82.8 AC.
Adair Co, 80 AC.	Lewis Co, 80 AC.	Mercer Co, 120 AC.	Putnam Co, 197 AC.	Sullivan Co, 98 AC.
Adair Co, 80 AC.	Lewis Co, 80 AC.	Mercer Co, 120 AC.	Putnam Co, 202 AC.	Sullivan Co, 100 AC.
Adair Co, 80 AC.	Lewis Co, 80 AC.	Mercer Co, 120 AC.	Putnam Co, 214 AC.	Sullivan Co, 100 AC.
Adair Co, 80 AC.	Lewis Co, 80 AC.	Mercer Co, 120 AC.	Putnam Co, 218 AC.	Sullivan Co, 112.05 AC.
Adair Co, 80 AC.	Lewis Co, 80 AC.	Mercer Co, 120 AC.	Putnam Co, 235 AC.	Sullivan Co, 112.05 AC.
Adair Co, 80 AC.	Lewis Co, 80 AC.	Mercer Co, 120 AC.	Putnam Co, 236 AC.	Sullivan Co, 120 AC.
Adair Co, 80 AC.	Lewis Co, 80 AC.	Mercer Co, 120 AC.	Putnam Co, 274.2 AC.	Sullivan Co, 120 AC.
Adair Co, 80 AC.	Lewis Co, 80 AC.	Mercer Co, 120 AC.	Putnam Co, 274.2 AC.	Sullivan Co, 120 AC.
Adair Co, 80 AC.	Lewis Co, 80 AC.	Mercer Co, 120 AC.	Putnam Co, 290 AC.	Sullivan Co, 120 AC.
Adair Co, 80 AC.	Lewis Co, 80 AC.	Mercer Co, 120 AC.	Putnam Co, 293 AC.	Sullivan Co, 120 AC.
Adair Co, 80 AC.	Lewis Co, 80 AC.	Mercer Co, 120 AC.	Putnam Co, 327 AC.	Sullivan Co, 132 AC.
Adair Co, 80 AC.	Lewis Co, 80 AC.	Mercer Co, 120 AC.	Putnam Co, 327 AC.	Sullivan Co, 132.7 AC.
Adair Co, 80 AC.	Lewis Co, 80 AC.	Mercer Co, 120 AC.	Putnam Co, 341 AC.	Sullivan Co, 148 AC.
Adair Co, 80 AC.	Lewis Co, 80 AC.	Mercer Co, 120 AC.	Putnam Co, 341 AC.	Sullivan Co, 148 AC.
Adair Co, 80 AC.	Lewis Co, 80 AC.	Mercer Co, 120 AC.	Putnam Co, 37 AC.	Sullivan Co, 155 AC.
Adair Co, 80 AC.	Lewis Co, 80 AC.	Mercer Co, 120 AC.	Putnam Co, 37 AC.	Sullivan Co, 160 AC.
Adair Co, 80 AC.	Lewis Co, 80 AC.	Mercer Co, 120 AC.	Putnam Co, 37 AC.	Sullivan Co, 160 AC.
Adair Co, 80 AC.	Lewis Co, 80 AC.	Mercer Co, 120 AC.	Putnam Co, 37 AC.	Sullivan Co, 160 AC.
Adair Co, 80 AC.	Lewis Co, 80 AC.	Mercer Co, 120 AC.	Putnam Co, 37 AC.	Sullivan Co, 161 AC.
Adair Co, 80 AC.	Lewis Co, 80 AC.	Mercer Co, 120 AC.	Putnam Co, 37 AC.	Sullivan Co, 163 AC.
Adair Co, 80 AC.	Lewis Co, 80 AC.	Mercer Co, 120 AC.	Putnam Co, 37 AC.	Sullivan Co, 180 AC.
Adair Co, 80 AC.	Lewis Co, 80 AC.	Mercer Co, 120 AC.	Putnam Co, 614 AC.	Sullivan Co, 185 AC.
Adair Co, 80 AC.	Lewis Co, 80 AC.	Mercer Co, 120 AC.	Putnam Co, 695 AC.	Sullivan Co, 187 AC.
Adair Co, 80 AC.	Lewis Co, 80 AC.	Mercer Co, 120 AC.	Putnam Co, 720 AC.	Sullivan Co, 193 AC.
Adair Co, 80 AC.	Lewis Co, 80 AC.	Mercer Co, 120 AC.	Putnam Co, 1034 AC.	Sullivan Co, 196 AC.
Adair Co, 80 AC.	Lewis Co, 80 AC.	Mercer Co, 120 AC.	Putnam Co, 1034 AC.	Sullivan Co, 200 AC.
Adair Co, 80 AC.	Lewis Co, 80 AC.	Mercer Co, 120 AC.	Putnam Co, Adair Co, 61 AC.	Sullivan Co, 220 AC.
Adair Co, 80 AC.	Lewis Co, 80 AC.	Mercer Co, 120 AC.	Putnam Co, Adair Co, 72 AC.	Sullivan Co, 247 AC.
Adair Co, 80 AC.	Lewis Co, 80 AC.	Mercer Co, 120 AC.	Ralls Co, 110 AC.	Sullivan Co, 248 AC.
Adair Co, 80 AC.	Lewis Co, 80 AC.	Mercer Co, 120 AC.	Schuyler Co, 16 AC.	Sullivan Co, 248 AC.
Adair Co, 80 AC.	Lewis Co, 80 AC.	Mercer Co, 120 AC.	Schuyler Co, 16.5 AC.	Sullivan Co, 248 AC.
Adair Co, 80 AC.	Lewis Co, 80 AC.	Mercer Co, 120 AC.	Schuyler Co, 19.69 AC.	Sullivan Co, 248 AC.
Adair Co, 80 AC.	Lewis Co, 80 AC.	Mercer Co, 120 AC.	Schuyler Co, 20 AC.	Sullivan Co, 248 AC.
Adair Co, 80 AC.	Lewis Co, 80 AC.	Mercer Co, 120 AC.	Pike/Putnam Co, 31.9 AC.	Sullivan Co, 248 AC.
Adair Co, 80 AC.	Lewis Co, 80 AC.	Mercer Co, 120 AC.	Schuyler Co, 35 AC.	Sullivan Co, 248 AC.
Adair Co, 80 AC.	Lewis Co, 80 AC.	Mercer Co, 120 AC.	Schuyler Co, 38.2 AC.	Sullivan Co, 248 AC.
Adair Co, 80 AC.	Lewis Co, 80 AC.	Mercer Co, 120 AC.	Schuyler Co, 40 AC.	Sullivan Co, 248 AC.
Adair Co, 80 AC.	Lewis Co, 80 AC.	Mercer Co, 120 AC.	Schuyler Co, 50 AC.	Sullivan Co, 248 AC.
Adair Co, 80 AC.	Lewis Co, 80 AC.	Mercer Co, 120 AC.	Schuyler Co, 80 AC.	Sullivan Co, 248 AC.
Adair Co, 80 AC.	Lewis Co, 80 AC.	Mercer Co, 120 AC.	Schuyler Co, 94 AC.	Sullivan Co, 248 AC.
Adair Co, 80 AC.	Lewis Co, 80 AC.	Mercer Co, 120 AC.	Schuyler Co, 97 AC.	Sullivan Co, 248 AC.
Adair Co, 80 AC.	Lewis Co, 80 AC.	Mercer Co, 120 AC.	Schuyler Co, 100 AC.	Sullivan Co, 248 AC.
Adair Co, 80 AC.	Lewis Co, 80 AC.	Mercer Co, 120 AC.	Schuyler Co, 101 AC.	Sullivan Co, 248 AC.
Adair Co, 80 AC.	Lewis Co, 80 AC.	Mercer Co, 120 AC.	Schuyler Co, 101 AC.	Sullivan/Putnam Co, 139 AC.

SOLD IN NORTH MISSOURI



**JEFF PROPST**  
**636.209.0362**  
jeff.propst@whitetailproperties.com



**STEPHEN STOCKMAN**  
**660.953.1242**  
stephen.stockman@whitetailproperties.com



**WHITETAIL PROPERTIES REAL ESTATE**  
HUNTING | RANCH | FARM | TIMBER  
**WHITETAILPROPERTIES.COM**



A DIVISION OF WHITETAIL PROPERTIES REAL ESTATE, LLC  
**RANCHANDFARMAUCTIONS.COM**

Whitetail Properties Real Estate, LLC DBA Whitetail Properties, EBA Whitetail Properties Real Estate. In the State of Nebraska & North Dakota DBA Whitetail Trophy Properties Real Estate LLC. In Ohio, DBA Whitetail Properties Ranch & Farm Auctions. Licensed in CO, MN, ND, SD, TN & WI - Jeffrey Evans, Broker. Licensed in FL, KS & MO - Jeffery Kirk Gilbert, Broker. Licensed in TX & NM - Joey Bellinger, Broker. Licensed in AL, GA, LA, & MS - Sybil Stewart, Broker. Licensed in TN - Tim Bumette, Broker. Licensed in TN & MS - Josh Mork, Broker. Licensed in AR - Anthony Chmako, Broker. Licensed in NC, SC, VA - Gus Camp, Broker. Licensed in IA, NC - Richard F. Baugh, Broker. Licensed in MI - Edmund Joel Nopaski, Broker. Licensed in IL, MO, WV - Debbie S. Lutz, Broker. Licensed in ID, MT, OR, UT, WA, WY & NV - Aaron Milkas, Broker. Licensed in NY - John Myers, Real Estate Broker. Licensed in OK - Dan Anderson, Broker. Licensed in KY, ME & NH - Derek Fisher, Broker. Licensed in OH - Jeremy Schwaber, Principal Broker. Licensed in NE & SD - Jason Scherdt, Broker. Licensed in MS - Chipper Gibbs, Broker. Licensed in PA - Jack Brown, Broker.