



BIG NICKEL

THURSDAY,
MARCH 27, 2025

©Carpenter Media Group 2025. All Rights Reserved

1931 E. 20th, Suite 103. • Joplin, MO 64804
417-624-4100

www.bignickel.com Volume 50 Issue 13

ANNIVERSARY
1975-2025

HOT SPOT
Classifieds

**Sch 80 -
1.66" & 1.9" OD**

**For my fence, pens & corrals,
for my fence....**

**I WANT IT STRONG AS
H&*L AND TO LAST
FOREVER....**

**And... I WANT IT
CHEAP!!**

If this describes you, GOBOB
just got some NEW Reject pipe
that fits the ticket.

No holes,
No splits,
just heavy as H&*L pipe!

**I DON'T GIVE A \$@#T
HOW IT LOOKS**

Sch 40



WE DELIVER!

Sch 80



**See for yourself
Sch 80 is STRONGER!!
and CHEAPER!!**

EVERYONE would love to have their pens
build with new 2 7/8" pipe for their posts
and top rail and new 2 3/8" Schedule 40
pipe for their under rails. It would be really
strong and would last forever, but it would
cost a fortune, and you will not get any
more for your cattle when you sell them.

GoBob has a solution that will give you the
same strength and longevity FOR LESS
THAN HALF THE PRICE.

Financing
Available

**Call & reserve
yours Today!**



GoBobBig.com

866-287-5504

ATTENTION!

BUYING Classic antique
cars and trucks. Running
or not. Also gas pumps,
tractors, farm equip-
ment, old signs, and
running newer vehicles. I
pay cash up to \$1000/up.
I buy one or all on
property.
Honest, trustworthy, and
fair.
Call ME! 417-234-5154.



6 GENERATIONS
SINCE 1903
Buying standing timber
and cut logs. Great pri-
ces on walnut, ash,
white oak, and many
other species.
Call 918-919-9764

GOLD & SILVER OF JOPLIN WE PAY MORE!

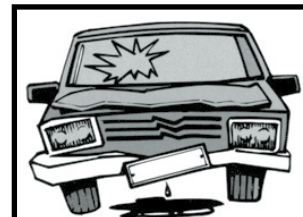
•Gold •Silver
•Diamonds •Coins
Estate Buyers •Free
estimates •50 Years of
experienced buyers.
**Discreet, Honest and
Trustworthy.**
NEW LOCATION
105 N. Rangeline, Suite 2
(US Bank, lower
level, next to mall)
Joplin, MO 417-553-0643

WANTED

R6 AUTO SALVAGE
918-675-4097
606 N. Mickey
Mantle Blvd.
Commerce, OK 74339
Mon-Fri. 9am-5pm
Used parts from classic
to newer models!

**BABY GOATS: Nigerian
Dwarfs, males, \$65.
417-434-1950.**

BE AN EARLY BIRD! Place
your ads before Monday and
beat the rush!



GOT JUNK? LLC
Paying cash for junk
cars. Range \$200-\$400 for
complete cars. Free pick-
up. Scrap yard with truck
scale. 3 miles south of
Noel, MO. Opened Tues-
Sat.
417-456-2141



**Want to BUY
Junk cars and trucks!
Paying top dollar!
You Call- We Haul!
417-626-2277.**

Please call to place classified ads
on The Big NICKEL website.
Our web address is www.big-
nickel.com

REWARD

\$500 REWARD with info
leading to arrest of
thieves who robbed the
cabin on Pokeberry Ln.
at Table Rock Lake. The
crime occurred on or
about Christmas Eve
2024. 785-424-5291.

76 acres outside Jasper,
MO for sale. Perfect build-
ing site, winding creek in
the timber, great hunting.
Call 417-540-9426 for infor-
mation.

**Grumpy Grandpa
HANDY MAN SERVICE
Insured and Bonded.
417-793-4078.**

NEED HANDIMAN for yard
work and misc. home re-
pair, and house painting.
417-952-3194.

Call us for all your advertising
needs. 417-624-4100.

GRAVELY "NOW THE DISTANCE" SALE

MARCH 17TH THRU APRIL 19TH

SALE ON ALL COMMERCIAL MOWERS

Example: Gravely Pro-Turn ZX60
List Price \$11,358
SALE PRICE \$9,499

0% for 48 months
Financing Available WAC

GATEWAY FARM EQUIPMENT

9723 GATEWAY DRIVE • NEOSHO, MO
417-451-0821 • www.gfeneosho.com

**10% OFF
ALL IN STOCK
BELTS, BLADES,
OIL, & FILTERS
(Thru March 31st)**

Celebrating 34 Years In Business

Granite- \$48 - \$75 sqft - Installed
Quartz- \$80 & under sqft - Installed



- Granite - Choose from 18 Colors
- Quartz - Choose from 33 colors

**NEOSHO
MARBLE**
Family Owned and Operated Since 1991

www.neoshomarble.com
SHOWROOM LOCATION

18414 Highway 59, Neosho, MO 64850 | 417-455-0470 | M-F 8:30 - 4:30



BIG NICKEL

The Big Nickel is published every Thursday.
© Carpenter Media Group 2025. All Rights Reserved

BIG NICKEL

1931 E. 20th, suite 103 • Joplin, MO 64804
417-624-4100 • Fax: 417-621-0287
EMAIL: classified@bignickel.com
www.bignickel.com

The publisher reserves the right to edit, classify, or reject any advertising copy. The Big Nickel assumes no financial responsibility for typographical errors in advertising or for omission on any advertisement further than the amount received for payment of such advertising in which the error occurred. Advertisers should check their advertising for accuracy when ad appears. The Big Nickel is not responsible for errors after the first insertion. One copy FREE per reader. Additional copies available only upon request. Payment by check authorizes The Big Nickel to electronically collect returned checks, plus \$25 service charge. Stopped or cancelled classified ads will receive an in house credit, good for 12 mos. No Cash/Credit Card Refunds! Copyright 2020. All rights reserved.

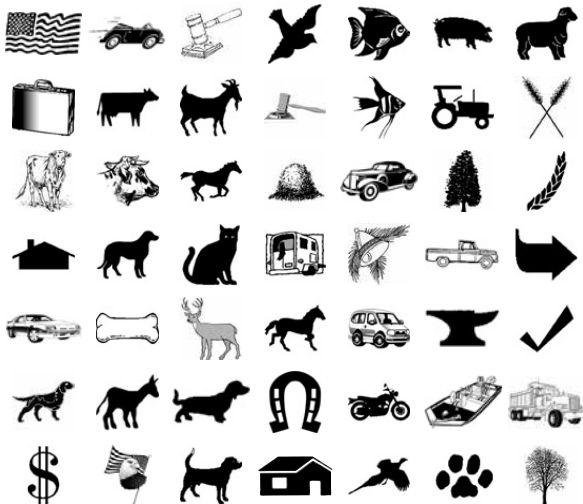
Big Nickel Classified Options

To place a classified Call 417-624-4100,
e-mail classified@bignickel.com

When you place a classified with the Big Nickel you have many options to enhance your classified and make it stand out above the others. Here are a few of the options available:

- Boxed \$2.00 • Bold & Capitalize [First 5 Words] \$2.00
- Graphic Options \$5.00 ea. • Super Graphic \$5.00
- Include Email address \$2.00 • Add a Picture \$5.00
- Include URL \$2.00 • 100% Reverse [Boxed/Boldcaps] \$5.00

Some of our Available Graphics



Available Classifications

A Section

MERCHANDISE

Miscellaneous MERCH
Free
Appliances
Arts & Crafts
Bargain Column
Building Supplies
Clothing
Computers/Accessories
Electronics
Furniture
Hobbies
Jewelry
Musical Instruments
Office Equipment
Pawn & Thrift
Sports Equipment
Wanted-Merchandise
Pets & Supplies
Lawn & Garden
Antiques & Collectibles
Flea Markets
Wood & Accessories
ANNOUNCEMENTS
Community Events
Thank You
Card of Thanks
In Memoriam
Lost & Found
New Businesses
No Hunting or Tres-

SERVICES

Accounting-Services
Air Conditioning/Heating
Alterations & Sewing
Appliance Repair
Auto Repair
Backhoe/Bulldozer
Bush Hogging
Chat/Dirt/Gravel
Child/Elderly Care-Ser-
vices
Cleaning
Computer
Construction-Services
Educational/Instruction
Electrical/Plumbing-Ser-
vices
Funeral Needs
Hauling / Moving
Health/Beauty/Fitness
Home Services
Health Care
Internet & Web Sites
Lawn/Garden/Landscape
Legal Services
Livestock-Services
Miscellaneous Services
Music
Painting
Photography

Power Washing
Remodeling
Roofing
Signs & Lettering
Storage Units
Stump Root Removal
Taxidermy
Transportation-Services
Tree Service
Welding
EMPLOYMENT
Help Wanted
Accounting-EMP
Agriculture
Cashier
Cleaning/Janitor
Clerical
Child/Elderly Care-EMP
Computer Tech
Construction-EMP
Education
Electrical/Plumbing-EMP
Hotels/Restaurants
Industry
Work Wanted
Maintenance
Management
Mechanic
Medical/Dental
Miscellaneous EMP
Opportunities/Training
Professional
Retail

Sales
Seasonal
Transportation/Driv-
ers-EMP
Welders
Employment Online Only
FINANCIAL
Business Opportunities
Insurance & Savings
Investments
Loans
Services
REAL ESTATE SALES
Homes For Sale
Mobile Homes For Sale
Acreages & Lots-Sales
Recreational For Sale
Business Property
Condos/Townhous-
es-Sales
Foreclosures
Homes For Sale By
Owner
Investment Property
Other-RE Sales
Wanted For Sale
REAL ESTATE
RENTALS
Acreages & Lots-Rental
Apartments
Condos/Townhous-
es-Rental

Duplexes
Homes For Rent
Mobile Homes For Rent
Office/Commercial
Rentals
Other-RE Rental
Recreational For Rent
Roommates Wanted
Wanted Rentals
RECREATION
Accessories-Recreation
ATV's
Boats & Motors
Campers & Trailers
Motorcycles
Other-Recreation
Parts & Services-Re-
creation
Wanted-Recreation
TRANSPORTATION
Automobiles
Trucks, 4x4's, SUV'S
Accessories-Transpor-
tation
Aircraft
Antiques & Classics
Commercial Vehicles
Heavy Equipment
Parts & Services-Trans-
portatio
Vans & Buses
Wanted-Transportation

B Section

AGRI-BUSINESS

Metal Buildings
Equipment & Supplies

Cattle
Farms & Acreage
Hay/Feed/Seed
Horses & Mules
Livestock-AGRI


Land/Pasture
Farmers Market
YARD SALES
YS-Garage Sale

YS-Surrounding Counties
AUCTIONS &
ESTATE SALES
Auction Sales

Auctioneers
AES-Surrounding Counties
Auction Reminder
Service Directory

A Section Index

MERCHANDISE	Page 02
Miscellaneous MERCH	Page 02
Wanted-Merchandise	Page 04
Pets & Supplies	Page 04
Antiques & Collectibles	Page 04
Wood & Accessories	Page 04
SERVICES	Page 05
Auto Repair	Page 06
Backhoe/Bulldozer	Page 06
Bush Hogging	Page 06
Construction-Services	Page 06
Home Services	Page 06
Lawn/Garden/Landscape	Page 06
Miscellaneous Services	Page 05
Tree Service	Page 06
EMPLOYMENT	Page 06
Miscellaneous EMP	Page 06
Transportation/	
Drivers-EMP	Page 06
REAL ESTATE SALES	Page 06
Homes For Sale	Page 06
Mobile Homes For Sale	Page 06
Acreages & Lots-Sales	Page 07
Homes For Sale	
By Owner	Page 07
RECREATION	Page 07
ATV's	Page 07
Boats & Motors	Page 07
Campers & Trailers	Page 07
Motorcycles	Page 07
TRANSPORTATION	Page 07
Automobiles	Page 07
Trucks, 4x4's, SUV'S	Page 07
Antiques & Classics	Page 07
Vans & Buses	Page 07

**BIG NICKEL**
DEADLINES
CLASSIFIED LINE AD DEADLINES
AUCTIONS 10am • Mon.
B SECTION 10am • Mon.
A SECTION 3pm • Mon.
VEH SECTION 3pm • Mon.
DISPLAY AD DEADLINES
AUCTIONS Noon • Wed.
B SECTION Noon • Thurs.
A SECTION Noon • Thurs.
VEH SECTION Noon • Thurs.



Road House

GAS & GROCERY

13284 THORN ROAD, JASPER, MO



BACON ME KRAZY & PIZZA

(Call In Orders 417-388-5828)

- Liquor • Double Deuce Drive Thru
- Game Room • Gas & Diesel

The RoadHouse is not your average
Gas & Grocery Station! Come and check it all out!
LOCALLY OWNED!!

**FOLLOW US
ON FACEBOOK:
ROADHOUSE
GROCERY**



Miscellaneous

**Midwest STORM SHELTERS**
JOPLIN, MISSOURI
midweststormshelters.net.
0% Financing
available to 12 months.
ATSA CERTIFIED storm shel-
ters. 10 year warranty.
Picked up Concrete units
starting at \$3100. Packages
with installation starting at
\$4450. Includes taxes and
digging. Steel Safe Rooms
starting at \$3755 +tax instal-
led. Serving the entire
4-State area and beyond for
18 years. See us at 12423
Hwy. 59, Neosho MO
417-781-9718

Need a Dog Sitter?
CALL/Text 417-850-4837 OR
<https://www.rover.com/sit/aprils73208>

Miscellaneous

I'M BACK in the area, and
ready to work on any
CLOCKS that need repair.
Call me 918-541-5421.

Miscellaneous

PASTURE FOR RENT, (17)
acres for 5 head yearling
calves. Call 417-358-8061.

WWW.BIGNICKEL.COM

FAIRVIEW DISCOUNT

Groceries and More



Tue, Wed, Fri..... 8AM -5PM
Saturday 9AM-3PM
Closed Sunday, Monday, Thursday

417-536-8133

Amos Yoder
31536 Palm Rd.
Fairview, MO

The Ten Commandments

*I. Thou shalt not have
strange Gods before me*

*II. Thou shall not take
the name of the Lord thy God
in vain*

*III. Rest on Holy Sabbath Day
& Keep it Holy*

*IV. Honour thy father and
thy mother*

V. Thou shalt not kill

*VI. Thou shalt not commit
adultery*

VII. Thou shalt not steal

*VIII. Thou shalt not bear
false witness against thy
neighbour*

*IX. Thou shalt not covet thy
neighbour's wife*

*X. Thou shalt not covet thy
neighbour's goods*

705457jn

**BIG NICKEL**

BRAIN GAMES

PUZZLE NO. 1019

PUZZLE SODOKU

MARCH WEEK 3

1	2	3	4	5	6	7	8	9
6	9	3	1	5	2	8	4	7
4	8	7	2	9	3	1	6	5
2	5	1	4	3	6	7	9	8
7	6	4	9	8	5	3	2	1
3	7	5	6	1	4	2	8	9
8	1	6	3	7	9	5	4	2
5	2	9	8	6	7	4	1	3
9	4	3	5	2	1	8	7	6

HOW TO PLAY:

Fill in the grid so that every row, every column and every 3x3 box contains the numbers 1 through 9 only once.

Each 3x3 box is outlined with a darker line. You already have a few numbers to get you started. Remember: you must not repeat the numbers 1 through 9 in the same line, column or 3x3 box.

CROSSWORD PUZZLE

MARCH WEEK 3

ACROSS

1.Bathing-suit tops
5.White House staffer
9.Boring instrument
12.Every individual
13.Trickle
14.Feathery stole
15.In any way
16.Teamster's rig
17.Soak
18.Bowler's button
20.Bouncing sound
22.Slender traces
25.Other
28.Summer quencher: 2 wds.
31.Nearer the facts
32.Prom wear
33.Fastener
35.Road covering
36.Rub out
38.Girdles
40.Notation
41.Yell
42.Resting
44.Twirl's need
48.Five-and-____ cent store

50.Dunces
53.Choir wear
54.Very small
55.Broad expanse
56.Frosty's material
57.Advanced in years
58.Changed the color of
59.Observes

DOWN

1.Milwaukee product
2.Acclaim
3.Expert fliers
4.Clever
5.Classified notices
6.Outrage
7.Small coins
8.Long heroic poem
9.Definite
10.Seek the love of
11.Lick at
19.Book name
21."Tell ____ About It"
23.Neptune's domain
24.Cloth emblem

26.Chair
27.Missteps
28.Thing
29.Preserve
30.Inspected
31.Ache
34.Murmur fondly
37.Turf unit
39.Thin
41.Exhausted
43.Weight

45.Actor Danza
46.Certain wood-wind
47."Broadcast ____"
48.Pair
49.Moray, e.g.
51.Cost
52.Heavy-hearted

ANSWER TO PUZZLE NO. 283

S	E	A	E	D	E	L	D	D	T	O
W	O	N	S	V	E	V	E	E	M	E
E	O	R	B	S	F	E	A	O	N	E
N	O	I	A	T	O	B	A	L	I	D
S	I	E	S	H	O	C	E	D	I	O
R	A	I	R	H	C	O	L	A	X	U
E	D	E	R	E	L	E	S	E	I	C
S	E	T	E	S	P	S	I	M	I	S
O	H	C	E	S	E	T	S	E	S	E
P	O	S	I	M	E	I	R	S	E	A
L	O	B	A	P	I	R	S	E	H	C
L	A	V	E	I	D	E	A	S	B	R

HOROSCOPE

WEEK OF
MARCH 23 TO 29, 2025

**ARIES**
You'll be invited to participate in various activities, each more original than the last. If you're single, your suitors could be particularly creative in their attempts to capture your attention and win your heart.

**TAURUS**
You'll dive into a project that will ignite your passion and enthusiasm. You thrive on tackling new challenges. When the going gets tough, lean on your family for unwavering support.

**GEMINI**
Seasonal fatigue, especially on dreary days, could weigh down your mood. This will make you want to research the possibility of going on a trip or spontaneous getaway to recharge your batteries.

**CANCER**
This week, you'll find the motivation to tackle all the tasks you've been putting off. Evaluate your friendships. Stick to calm environments and steer clear of large gatherings.

**LEO**
A promotion is on the horizon! You may be given big responsibilities right from the start. Perseverance will be the key to your success. On the emotional front, expect your partner to make a grand gesture.

**VIRGO**
Welcome the changes in your professional life with open arms. Although this may require you to learn better time management skills, you'll gain a deep sense of pride by facing the challenge head-on.

**LIBRA**
As lease renewal season approaches, now is the time to consider moving or even purchasing a property. This is your chance to turn a long-held dream into reality.

**SCORPIO**
Choose your words wisely this week, as they could be misinterpreted. If you feel restless, deep-clean your home or give it a fresh coat of paint, if only to clear your head.

**SAGITTARIUS**
Stores are already offering discounts on their spring collections. Step into the season with a new wardrobe. Don't think of it as an expense but as an investment in yourself. Embrace the opportunity to refresh your style.

**CAPRICORN**
This week, you'll feel an urge to conquer new challenges and embark on thrilling adventures. Your mind will be brimming with ingenious ideas. You'll come up with excellent initiatives in both your personal and professional life.

**AQUARIUS**
This week will get off to a rather chaotic start, and your mind seems to be elsewhere. However, the arrival of spring will inspire you to act. Break free from the monotony of everyday life by planning some outdoor activities.

**PISCES**
You may feel weighed down by fatigue this week. Treat yourself to some well-deserved pampering from your loved ones, especially your significant other. You deserve to be spoiled by the people who love you.

The luckiest signs this week:

ARIES, TAURUS AND GEMINI

★ ★ ★

THE CHURCHILL

3 BED, 2 BATH, LIVING, DINING, KITCHEN & LAUNDRY ROOM

ONLY \$89,900

*Includes Delivery, Set-up, Skirting, & Steps

At I-49, Exit 27 (Loves),
1 Mile East on Hwy. 86, Neosho, MO

720440jn

Clayton homes

NEOSHO

877-582-6767 • 417-451-6767

www.claytonhomesofneosho.com

M-F • 9am-6pm | Sat • 9am-5pm

bedroom 3
9'-3" x 12'-9"

dining

bedroom 2
9'-3" x 12'-9"

living room
17'-11" x 12'-9"

primary bedroom
14'-2" x 12'-9"

pantry

opt. dry

opt. wash

March 27, 2025

The Big Nickel - "The Paper People Pick"

Section A • Page3

BUDGET BOX

MOBILE STORAGE

417-782-7788

www.bbcontainer.com

Map showing location near Joplin, MO

Storage Container Sales & Modifications

Dry, Secure, & Rodent Tight!!

5745 Hwy 43, Joplin, MO
(1 1/4 mi south of Petro on Hwy 43)

Image of a storage container

628693cb

MERCHANDISE

Wood & Accessories

CLINT RENNER LOGGING

Specializing in Walnut, oak and ash. Guaranteed bids, will pile brush, top prices paid. Don't sell too cheap! Honest, Reputable, 3rd generation logger. Call today for free estimate. 417-439-7954.

JOPLIN FLEA MARKET

1200 S. Virginia Ave • Joplin, MO

417-623-3743

OPEN: SAT & SUN • 8AM-5PM

Antiques, Collectibles, Sports Memorabilia, Metal Signs & Much, Much More!!

Booth Spaces Available • Call for More Info!

724059jn

GOT OLD BATTERIES LYING AROUND? TURN THEM INTO CASH!

Lead acid vehicle batteries

CALL FOR PRICING!

CASH FOR BATTERIES

Rogers, AR • 479-631-2346

Joplin, MO • 417-624-2421

Golden, MO • 417-271-3801

Springfield, MO • 417-889-5245

Battery Outfitters

YOUR NEIGHBORHOOD BATTERY STORE

Pets & Supplies

HAVASHU PUPPIES, \$400. Call 660-354-0044 or 417-669-9099. First shots and dewormed.

LONGHAIR CHIHUAHUA PUPS, males \$300-up; females \$400-up. 620-429-5253.

YORKSHIRE TERRIERS. Males starting at \$500, females starting at \$600. 479-530-3348.

Antiques & Collectibles

GRECO-ROMAN LALIQUE ART original painting. Value \$7000. Donate to 501-C-3 charity or non-profit; or sell best offer cash. Dr. Gary Hamlin 417-437-5317.

BUYING ALL types of standing timber.

LARGE or SMALL Tracts

Nick Bradford
417-451-0820
417-825-4653

Miscellaneous

PRAIRIE SKY PROCESSING

MIAMI NATION EST. 2021

PRAIRIE SKY PROCESSING

Custom Processing Beef and Pork

Monday-Friday 7am-3:30pm

51850 E. 30 Rd. Miami, OK

Call 918-541-1400

724059jn

Miscellaneous

LOOK

6X8 MIRRORS

•Gym •Yoga •Dance

•Custom homes •Etc

\$495 Each delivered and installed.

Commercial or Residential.

Call Joe 417-973-1699.

CUSTOM WIDE plank T&G flooring, paneling, oak trailer floor, barn and corral lumber, custom sawing, also, have bundles of slab.

Chapman Sawmill
417-451-0072
417-438-5507

Miscellaneous

CREEK GRAVEL, good, clean, very few big rocks, \$150 load within 5 mile radius of Wheaton and Rocky Comfort. 417-236-3690.

UTILITY TRAILER for sale, 5'x8' tilt, new floor, \$500. 417-437-1100, Carthage.

Pets & Supplies

Adult Cocker Spaniel breeding stock! Two proven males: 1 chocolate, 1 chocolate merle; also two proven females: 1 chocolate & 1 black and white, \$200 each. Call/text-417-291-1327 for info/pics.

Pets & Supplies

REGISTERED 6 year old cream colored male POODLE; registered cream and white 3 year old male HAVANESE; (3) registered females, red sable and white HAVANESE, 4 year olds. \$250 each or best offer. 620-795-2420.

YORKIE PUPPIES!!! Small & adorable! ACA reg, S&W, tails and dewclaws done, \$500. For more info call 918-791-8970.

YORKIE MALE PUPPIES FREE to good home. Family raised. Shots utd. Call 417-508-9194.

ADORABLE COCKER SPANIEL PUPPIES! Ready to be yours TODAY! 3 females, 1 male, \$250 or best offer. Call/text 417-291-1327 for info/pics.

ADORABLE MINI BERNE-DOODLE PUPPY, F2, male, shots/wormed, health papers, \$700. Call/text 417-439-XXXX.

DACHSHUND PUPPIES, both wire hair and short hair; also Corgi puppies, shots and worming. 417-850-1314.

SIBERIAN HUSKY pups, blue eyes, \$200; White Persians and Chocolate Siamese Himalayan kittens, \$40. 417-435-6645.

TOY RAT TERRIER PUPPIES, make great pets! Weaned and wormed. Family raised. Great with children. 417-214-6607.

Wood & Accessories

D&D LOGGING

BUYING ALL TYPES OF STANDING TIMBER

Walnut • Oak Ash • Etc.

Anthony Gruver
417-437-9633

Wanted

REWARD

\$500 REWARD with info leading to arrest of thieves who robbed the cabin on Pokeberry Ln. at Table Rock Lake. The crime occurred on or about Christmas Eve 2024. 785-424-5291.

Have Clutter? Need room? Call the Big Nickel classifieds. We can help! 417-624-4100.

BIG NICKEL ADS SELL! Call for more information and specials. 417-624-4100.

CHESHIRE LOGGING

BUYING STANDING TIMBER

• Specializing in Walnut •

• Top Prices Paid •

References Available

BRENNON CHESHIRE

417-540-0421

HARDWOOD PRATER PRODUCTS

EST. 1903

6 GENERATIONS SINCE 1903

Buying standing timber and cut logs. Great prices on walnut, ash, white oak, and many other species.

Call 918-919-9764

JOSH HARTNESS LOGGING

BUYING MOST SPECIES OF STANDING TIMBER

Image of a logging truck

620-212-0896

MARKETS ARE GOOD ON BURR OAK, ASH & WALNUT

FREE ESTIMATES • 25 YEARS EXPERIENCE

GUN & KNIFE SHOW

FRIDAY, MARCH 28TH, 4PM - 8PM

SATURDAY, MARCH 29TH, 9AM - 5PM

SUNDAY, MARCH 30TH, 9AM - 3PM

NEWTON COUNTY FAIRGROUNDS

700 FIELD AVE, NEOSHO, MO 64850

RK SHOWS

FOR MORE INFO: RKSHOWS.COM

Image of a revolver

Image of a revolver

Image of a cowboy

\$2.00 OFF

ADMISSION AT ANY RK GUN & KNIFE SHOW

Coupon must be presented when admission is purchased. Only one coupon per person.

Page 4 • Section A

The Big Nickel - "The Paper People Pick"

March 27, 2025



SERVICE DIRECTORY

To Advertise your service or business in this special section

Call Grace: 417-624-4100

\$40⁰⁰
A Month

ASPHALT SEAL COATING

3S ASPHALT CONSTRUCTION
•Seal Chip •Asphalt Paving
417-317-7448 or 417-297-8362

CONCRETE

CONCRETE WORK
Message for a free estimate.
Driveways, sidewalks, slabs, pole barns.
Benny's Concrete 417-389-0160.

CONSTRUCTION & HOME IMP.

**GRUMPY GRANDPA
HANDY MAN SERVICE**
Insured and Bonded.
417-793-4078

**PROFESSIONAL FLOOR LEVELING,
AND JOIST REPLACEMENT.**
Licensed, Bonded, Insured.
417-439-5717 • 417-438-0864

D&M CONSTRUCTION & REMODELING, LLC.
Specializing in doors, windows,
& siding, all types of carpentry.
Metal roofing. Room additions.
Licensed, Bonded & Insured.
417-483-4113

PROFESSIONAL REMODELING & BUILDING.
Garages, Shops, Room Additions,
Bathroom Add-Ons.
Prices to fit your pocketbook!
Licensed, Bonded, Insured.
417-439-5717 • 417-438-0864

SUNBURST SERVICES HANDY MAN
Repairs, Carpentry, Drywall, Doors, Installs,
Plumbing, Painting, Pick Lists, Fixes, Electrical,
Windows, Honey-do's, Do Overs, and more. Small
Jobs Welcome. 417-324-4073.

ITM HANDYMAN SERVICES
Light Carpentry; Painting; Plumbing; Electrical;
Sheet rock-tape & finish.
Small Backhoe & tractor work.
Monthly contract or hourly.
417-437-4924

FAITH AND FIRE HANDYMAN SERVICES LLC:
House repairs, painting, drywall, carpentry,
landscaping. 620-249-1033.

DRYWALL REPAIR

CRAIG'S DRYWALL REPAIR
Do you have cracks in your ceilings or walls?
•Can Repair•Popcorn removal•Retexturing
•Loose tape joints•Ceiling stains•Mold removal•
Blown-In Insulation available.
Same day, same service. Insured, Free Estimates.
5 Star Rating. M-F 7am-5pm, Sat. 8am-Noon
Serving the Joplin/Springfield area for over 40 years.
417-430-9544

ELECTRICIAN

WILCO ELECTRIC, LLC.
Residential Construction and Service Work.
Licensed, Bonded & Insured.
Free Estimates. Call or text any time
417-629-4740

ESTATE SALES

**JUST GET ORGANIZED!
SERVICES WE OFFER!**
*Organize, set-up, and hold sales. *Downsizing
*Moving *Estate (Residential & Commercial) homes
and small and medium farms.
*Clean up property. *Haul off unwanted items.
*Help prepare home/property for sale.
*Advise on staging home for sale. *Pack for moves.
*Buying gold and silver (jewelry, flatware, coins)
Serving the area for 15 years.
Large following of buyers to our sales.
Just Get Organized! Free Estimates.
Suzanne 417-825-7003

EXCAVATING

TICE EXCAVATION LLC
Prep for water/sewer lines, Septic system
installation, Land prep for buildings, roads, Land
Clearing, Brush Removal, Ponds
Seneca, MO
417-592-4636•Tim Nice-Owner

HAULING

HAUL AWAY SERVICES
Junk; Rubbish; Furniture; Appliances; Debris;
Garage/Yard items.
JUST GET ORGANIZED!
417-825-7003
Serving 4 State Area for 15 years.

LAND CLEARING

Reclaim overgrown pastures, fence lines.
Brush hauling available.
Call or text Paul 417-312-5117

MOVING SERVICES

Expert Furniture Moving 3 Men & 26' Truck
Hourly or Flat Rate w/Quote.
Professional, Licensed & Insured.
SCOUT PRODUCTS LLC
417-673-7777

ORGANIZING

TOO MUCH STUFF?
We Buy Most Anything. Estates/full or partial.
Appliances; furniture; patio; outdoor items;
tools; jewelry, gold, silver items;
(We also do Estate Sales).
JUST GET ORGANIZED
417-825-7003 Suzanne

ROOFING

**RESIDENTIAL & COMMERCIAL METAL
ROOFING & REROOFING.**
Regular rib or standing seam. (Hidden fasteners).
40 year warranty. (22) colors. Satisfaction
guaranteed! Servicing the 4-State Area! Free
Estimates!
YODER CUSTOM CONSTRUCTION, LLC.
417-388-0613

MONTY'S ROOFING & CONSTRUCTION
Residential: •Roofing •Siding •Gutters
•Storm Damage •Construction
Commercial: •Roofing •Metal •Flat
•Bituman Coatings. Over 30 years experience,
Workers' Compensation
30 Year Leak/Labor Warranty
Free Estimates, Insurance Claims,
Special Discounts
Licensed, Bonded, Insured
MCRC.PROMontysroofingllc@gmail.com
417-438-0895

STUMP REMOVAL

TREE STUMP removal, fast, efficient, affordable.
Free estimate. 417-623-5510,
TERRY VREELAND

TREE SERVICE

PACIFIC TREE SERVICE
Owner: David Bratt
417-622-7963
*Licensed *Bonded * Insured
All Bids are Completely Free
Tree Trimming & Removal. Brush Cleanup.
All jobs big and small. We can handle them all!

**PLACE YOUR
AD TODAY!**

**SPACE IS LIMITED AND
GOING FAST! DON'T MISS OUT!**

**Call Grace:
417-624-4100**



PLACE YOUR AD TODAY!

**SPACE IS LIMITED AND
GOING FAST! DON'T MISS OUT!**

Call Grace: 417-624-4100



CELEBRATING OUR 10TH YEAR IN BUSINESS!

WANT TO BUY MILITARY ITEMS

USA or FOREIGN * SINGLE PIECES OR COLLECTIONS

Medals - Helmets - Patches - Uniforms - Knives

Bayonets - Buying from WW I – Iraq/Afghanistan

Military Collectors Services

126 N. Webb • Webb City, MO • 417-850-0011

marionliles@yahoo.com

634-4831

Miscellaneous

A&B

CDL COURSES

CLASS A CDL Entry Level Driver Training. Brink Engineering dba A&B CDL Courses now offering FMCSA Approved training in Verona, MO! Get your CDL in 4 days for only \$2000! Call today! Grants available! 417-737-0897.

ATTENTION!

\$

\$

\$

Buying all VEHICLES, TRACTORS, Farm Equipment, Classic Cars and Trucks. Everything on property. "Call me before you sell!" 417-830-4685.

INSTANT CURB APPEAL!

Gorgeous Double washed and custom sized RESIDENTIAL/ COMMERCIAL/ PREMIUM Wholesale, Landscape GRAVEL, creekrock, sand, pea gravel, driveway gravel, and playground/ kennel gravel. Buy at the source! WE DELIVER! Call Riverside Sand and Gravel. 417-438-3003.

ROLL-OFF CONTAINERS FOR REMODELING, ROOFING, CLEAN UP.

Pittsburg, Joplin and surrounding areas. Freddy Van's, Inc. 620-231-1127.

Miscellaneous



POULTRY HOUSE REMOVAL

We buy good quality chicken and turkey houses. Remove the houses and all deconstruction debris. Local professional crews. Serving since 1992. Cedar Creek Contractors, LLC 785-217-3379.

STORAGE UNITS, TWO SIZES OPEN, RV/BOAT PARKING ALSO AVAILABLE, IN NEOSHO, MO. (NEAR LOVE'S TRUCK STOP.) FOR PRICES AND SIZES, VISIT 86ministorage.com or call 417-621-1601.

SOUTHWEST CONTRACTORS

YOUR LOCAL metal roofing contractor. Various colors available. Free estimates. General construction. 417-434-3266.

EICHER & SON

Decks, Remodeling, Handy Man work 40 years experience. Call us for your construction needs. 918-541-5421.

SW MO BEEKEEPERS OF NEOSHO, We meet the first Tuesday of every month at 7pm. Neosho High School Ag building. New members welcome. For more info call/text 479-644-1167.

Call about our classified ad specials. 417-624-4100.

SERVICES

Miscellaneous

Local Christian Church seeking a piano player and a song director for Sunday Morning Service. Call or text 417-529-8677.

PAYING TOP Dollar for junk autos, small \$100/up, large up to \$300. No titles OK. 417-437-0605.

Auto Repair



FOR ALL Your Transmission Needs. Late model and Classic Car Specialist. Over 50 Years Experience. WOODS TRANSMISSION REPAIR 417-678-7479.

Backhoe/Bulldozer

ROCKIN' R EXCAVATION is your one call for all excavation needs! 417-454-9371.

Construction-Services

INSTANT CURB APPEAL!

Gorgeous Double washed and custom sized RESIDENTIAL/ COMMERCIAL/ PREMIUM Wholesale, Landscape GRAVEL, creekrock, sand, pea gravel, driveway gravel, and playground/ kennel gravel. Buy at the source! WE DELIVER! Call Riverside Sand and Gravel. 417-438-3003.

Construction-Services

ATTENTION!

GOODWIN MASONRY Brick-Block-Stone. New and Repairs. Call John 417-927-3349, 417-321-2176

SOUTHWEST CONTRACTORS

YOUR LOCAL metal roofing contractor. Various colors available. Free estimates. General construction. 417-434-3266.

Lawn/Garden/Landscape

ATTENTION!

FORESTRY MULCHING/ LAND CLEARING. Licensed and Insured. 4-States. Contact: Allen 417-850-2774 totalimagelandservices.com

Bush Hogging

LOOK

OFFERING: BRUSH HOGGING, Land Clearing and Forestry Mulching Services. Contact 620-429-5889. WWW.BIGNICKEL.COM

H&M CONSTRUCTION

Cell: 417-262-2340 • Home: 417-682-4060

ALL TYPES RESIDENTIAL & COMMERCIAL BUILDINGS

Pole Barns • Shop Buildings • Horse Barns Cattle Facilities • Shouse Buildings • Garages Also Available in Red Iron Structures

YOU DREAM IT, WE BUILD IT!

62838651

VISTA LANDSCAPE MANAGEMENT

LANDSCAPE SERVICES • DRIVEWAYS • SPRINKLER SYSTEMS • DECKS & FENCES • PERGOLAS • TRACTOR WORKS • DRAINAGE

NOW OFFERING GRAVEL DRIVEWAY SPECIAL CALL FOR FREE QUOTE

VISTA LANDSCAPE MANAGEMENT • 479-799-9572 Licensed & Insured • Serving 25 mile radius of Springdale, AR



Tree Service



BUYING STANDING Timber. Top prices paid. Full residential service available. Call Josh St. Clair. 417-626-2120.

Home Services

ADD BEAUTY and value to your home with new seamless gutters, fascia, or soffit. Call for a free estimate 920-254-4717.

WWW.BIGNICKEL.COM

EMPLOYMENT

Miscellaneous

HOUSEKEEPER, PART-TIME, Joplin, dependable, clean, organized, trustworthy, background check. No drugs, alcohol/ tobacco. Call 417-952-3194.

NEED HANDIMAN for yard work and misc. home repair, and house painting. 417-952-3194.

Transportation/Drivers

Driver wanted pulling a hopper bottom around the 4 state area. Clean record and hopper bottom experience preferred. Home weekends. 620-674-1703.

REAL ESTATE SALES

Homes For Sale

ANDERSON- 1.4 treed acres with 2 bedroom, 1 bath mobile, new septic and central heat/air, \$5900 down, \$957 per month. Owner finance 800-720-8503.

CHECK OUT this home in Miami, OK! 2 bedroom, 1 bath frame house with new metal roof and small storage building, \$4200 down, \$708 per month. Owner finance 800-720-8503.

CUTE COTTAGE, 1 bedroom, 1 bath frame home with central heat/air, privacy fence, Joplin, \$3500 down, \$628 per month. Owner finance 800-720-8503.

DON'T MISS SEEING THIS ONE! Neosho, 27-1/2 acres with 2 bedroom, 1 bath stucco house, detached 2-car garage, outbuilding/workshop, \$14,900 down, \$2501 per month. Owner finance 800-720-8503.

FAIRVIEW: 2 bedroom, 1 bath home with native rock! 1100 SF; has basement and newer metal roof, \$3900 down, \$711 per month. Owner finance 800-720-8503.

FOUR BEDROOM, 2 BATH home in Joplin, 1360 SF with central gas heat/air, \$4400 down, \$882 per month. Owner finance 800-720-8503.

GOODMAN- 1-1/3 acre, 3 bedroom, 2 bath modular home with central heat/air, dishwasher, enclosed front and back porches, 2-car garage and carport/storage. AS IS, \$4900 down, \$965 per month. Owner finance 800-720-8503.

Homes For Sale

GREAT STARTER HOME! Joplin- 2 bedroom, 1 bath frame house with central heat/air, detached garage with large workshop in it and a bonus room! \$4900 down, \$877 per month. Owner finance 800-720-8503.

JOPLIN- 2 bedroom, 1 bath with central heat/air; move-in ready! \$4900 down, \$877 per month. Owner finance 800-720-8503.

JOPLIN- 3 bedroom, 2 bath frame house, with central gas heat/air, fenced yard, \$5900 down, \$991 per month. Owner finance 800-720-8503.

JOPLIN- 3 bedroom, 2 bath frame house with central heat/air, 1-car detached garage and newer roof, \$4900 down, \$1009 per month. Owner finance 800-720-8503.

NEAR DOWNSTREAM CASINO! 2-2/3 acres with 4 bedroom, 2 bath modular home, 32'x80'; has central heat/air, on permanent foundation and has a horse barn approx. 20'x16'. In Oklahoma. \$8400 down, \$1549 per month. Owner finance 800-720-8503.

NEW HEAT and AIR SYSTEM in this 3 bedroom, 2 bath home in Joplin; 1366 SF, \$5500 down, \$916 per month. Owner finance 800-720-8503.

NEW LISTING! 3 bedroom, 2 bath home with basement, 1220 SF; located on 1/4 acre in Joplin and has central gas heat/air, \$5900 down, \$1132 per month. Owner finance 800-720-8503.

NO ROOF WORRIES! 2 bedroom, 1 bath frame house, large detached 24'x30' garage. New metal roof-6/24; Commerce, OK. \$4900 down, \$972 per month. Owner finance 800-720-8503.

PERFECT FOR A COUPLE! Joplin- 2 bedroom, 1 bath frame home with central heat/air; has small storage building and newer metal roof, \$3900 down, \$711 per month. Owner finance 800-720-8503.

ROCK HOUSE IN JOPLIN! 2 bedroom, 1 bath, 1140 SF, with central gas heat/air, 8'x10' storage building. \$4900 down, \$834 per month. Owner finance 800-720-8503.

SOLD!- 23.95 ACRES, McDonald Co. Breatttaking home and cabin with stunning view of Big Sugar Creek. Call Tony Chrisco at Whitetail Properties Real Estate LLC 417-860-0259.

Mobile Homes For Sale

4 BEDROOM, 2 BATH- 2022 Clayton. Double sinks in master bathroom, nice tub. Home has a decent size kitchen with plenty of kitchen cabinets and an island. Very cute home. Call us and ask about #38. 417-451-2609.

Need something? Let us help you. You can advertise that you are looking for a special item.Call 417-624-4100 for more information.

~ Over the Storms ~

God never acts outside of His character. Nothing is done outside of the charge His throne.

God's comfort and security for His people lie within His character. He knows those who really do put their trust in Him.


God is the Lord over the storms of life and holds charge over world events. God is the stronghold in the day of trouble, and He knows those who trust in Him.

In the day your world seems to go upside down and situations get so out of order, you'll find God is not absent but a refuge and a stronghold in the time of problems.

God remains when the skies darken and the storms of life seem to be the fiercest.

In it all, God never loses sight of those that are His. He sees with clarity their struggles and again He has full charge over whatever troubles you.

As you journey through this world, look to God- the one that wants to lead you through life.



Mark Taylor is the President of Sky High Broadcasting, as well as an author, columnist and speaker. You can contact him at mtaylor@kneo.org, or follow him on Twitter @kneo917

KNEO

RADIO THAT IMPACTS YOUR FUTURE

91.7

Listen Live at kneo.org

417-451-KNEO (5636)

10827 Hwy 86 East, Neosho, MO 64850



**EnergySmart
ZERO™**

Comfort and energy savings, redefined.

- » **Save up to 50% on annual energy bills** when you by an Energy Smart Zero home!*
- » **Best Homes/Best Prices!**
- » **Customer Experience is Our #1 Goal!**
- » **Buy from the Proven Best!**



**Joplin
Supercenter**

**Largest Selection of
EnergySmart Zero™ Homes
in the 4-State Area!**

Mobile Homes For Sale

FINANCING AVAILABLE. 2020 Cavalier, 4 bedroom, 2.5 bath. Taped and textured home. Nice modern looking home. This is ahome you need to see for yourself! There is a small deck attached. Financing options available for most credit scores. #12. 417-451-2609.

READY TO GO! 2021 Champion, 16x80, 3 bedroom, 2 bath. Nice single-wide ready for it's new owner. Financing available for more credit scores. First 50 miles of delivery included in price. #39. 417-451-2609.

STUNNING!! 2023, 16x84, 3 bedroom, 2 bath. Home is modern looking. Would make great lake house. Home includes kitchen appliances and AC unit. Big kitchen, lots of beautiful windows, amazing master bedroom and bathroom. Come by and take a look! #1. www.hwy59discount homes.com 417-451-2609.

TAPE & TEXTURED HOME. Single-wide, 16x76, 3 bedroom, 2 bath. Ready to go! First 50 miles of delivery and basic set-up: block, level and tie down. #3. 417-451-2609.

TIRED OF RENTING? 2022 CLAYTON, 16x80, 3 bedroom, 2 bath. Double sinks in master bathroom, walk-in closet in master bedroom. Kitchen appliances included along with an A/C unit. Ask us about financing options! #19. 417-451-2609. www.hwy59discount homes.com

WE need MOBILE HOMES!
PAYING CASH TODAY!
ALL YEARS, ALL SIZES.
CALL 417-455-0200.

Are you having a garage sale or rummage sale? Call us to advertise. **417-624-4100.**

Acreages & Lots-Sales

76 acres outside Jasper, MO for sale. Perfect building site, winding creek in the timber, great hunting. Call 417-540-9426 for information.

DIAMOND- Acreage available! 27.8 acres with live creek, electric and water. \$9900 down, \$2019 per month. Owner finance 800-720-8503.

LISTING- 80.0 acres McDonald Co.- Spectacular farm and hunting property in the rolling Ozark Hills of Southwest Missouri. Call Tony Chrisco at Whitetail Properties Real Estate LLC 417-860-0259.

Town & Country

Real Estate & Auction Service

1700 W. Austin, Nevada • **417-667-2966**

- **21 ACRES**, M/L Tillable ground currently in beans south of Lamar on 30th Rd..... **PRICE REDUCED... \$129,000**
- **69 ACRES**, M/L, north of Bellamy, MO planted in beans..... **\$310,500**
- **3 Bed, 2 Bath Home**, on 17 Acres South of Nevada, Mo **SOLD**
- **72 ACRES**, M/L about 30 acres in beans, remainder in grass and timber (great hunting spot) north of Bellamy, MO..... **SOLD**
- Home on 5 acres with shop,..... **SOLD AT AUCTION... \$230,000**

WE ARE "SOLD OUT" & NEED LISTINGS! PLEASE CALL, IF YOU ARE THINKING OF SELLING! 417-488-9540



DOUG WORTMAN
417-448-9540
Owner Broker/
Auctioneer



JAY WORTMAN
417-365-4721
Agent



TROY SCOTTEN
417-448-7163
Agent



TAYLOR SCOTTEN
417-684-1224
Agent



COLE ABELE
417-684-0881
Auctioneer

WE SELL LAND AND HOMES



WHITETAIL PROPERTIES REAL ESTATE
HUNTING | RANCH | FARM | TIMBER



WHITETAILPROPERTIES.COM
RANCHANDFARMAUCTIONS.COM
A Division/Trade Name of Whitetail Properties Real Estate



TONY CHRISCO
SOUTHWEST MISSOURI
417.860.0259
tony.chrisco@whitetailproperties.com



2024
BEST
BROKERAGES



EQUAL HOUSING
OPPORTUNITY

Whitetail Properties Real Estate, LLC DBA Whitetail Properties, DBA Whitetail Properties Real Estate. Licensed in MO - Jefferson Kirk Gilbert, Broker.

Acreages & Lots-Sales

NEW LISTING- (81.92) acres, Newton Co.- Exceptional hunting and recreational property with buildable sites. Call Tony Chrisco at Whitetail Properties Real Estate, LLC. 417-860-0259.

SOLD!-(20) acres Benton Co. AR near Garfield. Breathtaking, buildable property near Beaver Lake. Call Tony Chrisco at Whitetail Properties Real Estate LLC 479-866-2622.

SOLD!- (344) Acres McDonald Co. Stunning hunting and recreational retreat in the Ozarks. Call Tony Chrisco at Whitetail Properties Real Estate, LLC. 417-860-0259.

WWW.BIGNICKEL.COM

RECREATION

Boats & Motors

2006 FISHING Pontoon boat, always kept out of the weather, 2nd owner. 18' Lowe, 50HP Suzuki tilt and trim, (2) fishing seats in front and rear, bimini top, enclosed canvas cabin and tarp for boat, rod and reel holders, (2) anchors and rope, fish locator, still looks almost new, \$28,000 new, asking \$12,500. 417-434-4128.

RECREATION

ATV's

HONDA 2022, new, Foreman Rubicon, 520cc, 4 wheel ATV; Kawasaki Brute Force 750 camo. Best offer, by appointment. Dr. Hamlin 417-437-5317.

Campers & Trailers

I NEED an RV that can be used for medical ministry disaster relief missions and charity patient care or travel motor home. Dr. Gary Hamlin 417-437-5317.

Motorcycles

ATTENTION!

2006 HONDA GOLDWING GL1800, air bag model, 50,000 miles, CD changer, CB radio, heated seats and grips, new rear tire, \$7000. 417-438-0736.

NIGHTWIND CYCLES
1004 Walnut, Lamar, MO.
Reasonable rates.
Motorcycle inspection station.
BIG SALE ON ROADKILL T-SHIRTS-\$5 EACH!
Now have full line of biker apparel and gear!
Also Billiard supplies!
Year round gift certificates.
Now accepting credit cards.
Call for appointment
417-682-3733.

2013 FORD F-150 SUPERCREW FX4 4WD

3.5L,V6 TURBO,
4WD, TONNEAU COVER,
2ND ROW FOLDING SEAT,
ONLY 173K MILES,
LOCKING TAILGATE.
LOTS OF EXTRAS!
SUPER SHARP!
SEE OUR WEBSITE
FOR MORE PICTS!

**Only
\$13,995**



Burr Motor Co.
639 W. Coler, Neosho, MO
417-451-1029
www.burrmotorcompany.com

Trucks, 4x4's, SUV's

2005 FORD F-350 4 door pickup, 220,500 miles, new rebuilt bullet proof diesel engine, engine less than 10,000 miles, 2016 hydra-bed bale bed with a third outlet, like new tires, \$18,000. Farmer retiring is reason for sell. 417-461-4339.

Antiques & Classics

1998 CORVETTE COUPE, 18,000 original miles, silver with black interior, excellent condition, \$24,000. 620-231-7494.

There's a better way to get noticed.

Keep life simple. Take out an ad.



Vans & Buses



MOBILITY VAN- Chrysler Town & Country Deluxe, handicap accessories, 2016, 23,000 miles, \$72,000 or best offer. New cost \$120,000 ROLLX brand. Dr. Gary Hamlin 417-437-5317.

WWW.BIGNICKEL.COM



FIND THE
PERFECT PET
FOR THE
PERFECT PRICE

Find your next fluffy, feathered or furry friend in your local newspaper classifieds!



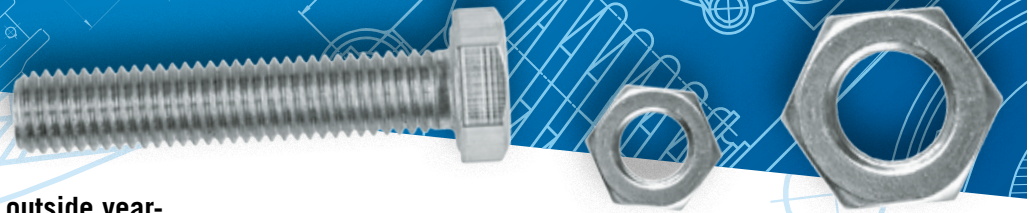
March 27, 2025

The Big Nickel - "The Paper People Pick"

Section A · Page7

ASK THE MOTORMEDICS®

Automotive Advice from the Under The Hood® Show



Dear Motor Medics,

I have a 2004 GMC Yukon that stays parked outside year-round. I don't drive it a lot, maybe every three weeks or so to get groceries and such. In the summer it is fine but in the colder months the battery goes dead every time I need it, and I've had to replace the battery at least every year. I also need to get it started on the coldest of days and even with the good battery it sometimes does not want to go. Do you have any suggestions for a more reliable starting?

Thank you,
Joyce in Redwood Falls Minnesota

Dear Joyce,

We have a number of listeners who are in this situation, and we also have a vehicle stored outdoors that we use rarely but when it is needed it must run quickly. We always keep a battery maintainer on the vehicle when it is not being used. It uses only a few cents per day to keep the vehicle battery ready to go at a moment's notice and it has never failed to have enough power to turn it over. As for the very cold weather. We have installed a block heater that we only plug in for a few hours before we needed it and only on the coldest days. Most days the strong fully charged battery is enough to do the trick. We also always keep fuel stabilizer in it due to low vehicle usage.

Take care,
the Motor Medics

Dear Motor Medics,

I have a question about tires and how well they grip. I have always used all-season tires since I live where it snows, and I want good grip all year. The guys at the tire store have always said that's all I need but recently my mechanic said that if I switch to a winter tire in the cold months, I will get a much better grip. Is there really a difference in winter tires and all-season tires.

Thank you,
Jerome in Fargo North Dakota

Dear Jerome,

There is a major difference in tires. There is more to a tire than just the tread you see. Sometimes people will look at a tire and choose the one with the most aggressive tread to get the best grip. In fact, a very aggressive tread is better on mud and in deep snow but for packed snow and ice, the tire type with a tread that is closer to a street tire but with more grooves cut in the tires or "Siping" gives the tire a much better grip. The more siping that a tire has, the more surface area the tire has to contact the road. There is also a major difference in the rubber of a winter tire than a summer tire. Rubber gets harder when colder and the harder the tire the less grip it has. Your mechanic is correct. Using a winter only tire will give you a better grip and keep you safer.

Take care,
the Motor Medics

Dear Motor Medics,

I have a 2014 Ford F-150 and the headlights feel poor to me. I have gone the route of brighter Led headlight bulbs and even installed a off road light bar to help. Adding these lights has only got me one thing. Well, two things, two tickets. People started flashing their lights at me all the time and I started flashing them back because I didn't have my high beams on. I got one ticket for the off-road light bar and one for flashing a police officer. Is there anything I can do to get better lights?

Thank you,
Jack, in Cleveland Ohio

Dear Jack,

Headlights are a bit of a sore spot for us because of the ever-growing number of non-road legal lights being used. We drive to work every day and see no less than ten vehicles that have blinding non legal lights not to mention the ones who just don't feel they have to dim their factory lights. Two cars headed for each other at speeds over 65 MPH both blinding each other is not smart. Changing bulbs to LED in a standard housing is not legal and will blind others so are the off-road light bars. To get better light and keep everyone safe look into companies like Morimoto who offer DOT Legal headlight housings. Yes, they cost good money, but you will see much better and not cause safety issues with other drivers. These lights often are better than some very high-end cars. Those cheap Amazon units tend to be poor.

Take care,
the Motor Medics

Dear Motor Medics,

I have a 2014 Toyota Prius that has been giving me issues lately. Sometimes it will die going down the road and display a Hybrid System Failure warning on the dash and other times it will fail to start. It seems like the colder it is outside the more it fails to start. It does nothing when the power button is pushed but all the lights come on normally and the light says ready on the dash. I have taken it into a shop twice, but it always starts for them. They had me replace the 12-volt battery in the back hatch area because it was low but that made no difference. Do you have any ideas of what may be wrong?

Thank you,
Chris, in Vermont

Dear Chris,

What you are describing could be caused by many things but one of the most common issues is a dying high voltage battery. The high voltage battery is responsible for powering the electric drive motor and for starting the car. The car is not equipped with a regular type of starter. As you drive the car this battery pack is constantly being discharged and recharged and only has so many cycles in its life. A shop should be able to test the voltage with a scanner. Many independent shops can also replace the battery if necessary.

Take care,
the Motor Medics

Come visit the Motor Medics® online @
underthehoodshow.com



TYM

SPRING INTO

NEW DEALS!



TYM

6 Year Limited
WarrantyFinancing
Available**TYM T25**25HP, 4WD, W/LOADER,
HYDROSTAT TRANS,
1,378 LBS LOADER LIFT
CAPACITYCALL FOR
CASH PRICEFINANCED AT
3.99% - 84 Mo**\$18,900****TYM 2515R**25HP, 4WD, W/LOADER,
2200 LB LOADER LIFT
CAPACITY, 12X12
SHUTTLE SHIFT TRANS,
3022 LBS TRACTOR
WEIGHT ONLYCALL FOR
CASH PRICEFINANCED AT
3.99% - 84 Mo**\$21,900****TYM 2515H**25HP, 4WD, W/LOADER,
HYDROSTAT TRANS,
2200 LBS LOADER
LIFT CAPACITY,
3022 LBS TRACTOR
WEIGHT ONLY.CALL FOR
CASH PRICEFINANCED AT
3.99% - 84 Mo**\$22,900****TYM T494H**47HP, 4WD, W/LOADER,
HYDROSTAT TRANS,
1 SET REMOTES,
2700 LBS. LOADER
LIFT CAPACITYCALL FOR
CASH PRICEFINANCED AT
3.99% - 84 Mo**\$30,900****TYM T574H**55HP, 4WD, W/LOADER,
HST TRANS,
2 SET REMOTES,
2700 LBS LOADER LIFT
CAPACITYCALL FOR
CASH PRICEFINANCED AT
3.99% - 84 Mo**\$32,900****TYM T474C**47 HP, 4WD, W/LOADER,
CAB W/H&A,
SHUTTLE SHIFT TRANS,
1 SET REMOTES,
2200 LBS. LOADER LIFT
CAPACITYCALL FOR
CASH PRICEFINANCED AT
3.99% - 84 Mo**\$32,900****TYM T574C**55 HP, 4WD, W/LOADER, CAB W/H&A,
SHUTTLE TRANS, 2 SETS REMOTES,
2700 LB. LOADER LIFT CAPACITY,
4200 LBS. TRACTOR WEIGHTCALL FOR
CASH PRICEFINANCED AT
3.99% - 84 Mo**\$36,900****TYM T574HC**55HP, 4WD, W/LOADER,
CAB W/H&A, HST TRANS,
2 SETS REMOTES,
2800 LBS,
LOADER LIFT CAPACITYCALL FOR
CASH PRICEFINANCED AT
3.99% - 84 Mo**\$37,900****Tatum Motor**
FARM TOOLS SINCE 1889931 N. BUS. HWY. 71
ANDERSON, MO
417-845-3563
HOURS M-F 8-5 • SAT 8-NOON1033 W. HENRI DE TONTI BLVD
(412 WEST), TONTITOWN, ARK
479-361-9488
HOURS M-F 8-5 • SAT 8-NOON

S A L E S

S E R V I C E

P A R T S

CAS STEEL
METAL BUILDING SUPPLIES

METAL CULVERTS

- **23 STEEL ROOFING COLORS** plus 18 Textured Colors
- **VINYL SIDING**
- **GARAGE DOORS**
- **TRIM**
- **BUILDING KITS** Steel or Wood

LIFETIME WARRANTY

www.cassteelneosho.com
18027 E. Hwy. 86 • Neosho, MO
 (5 Miles East of Walmart on 59 Hwy. • Old 60 & 71 Alt.)
Toll Free 855-455-2526 or 417-455-2525
Mon-Fri • 7:30-5:00

BRB BUILT RITE BUILDINGS

1110 W. Harmony
Neosho, MO
417-632-4675
www.builtritebuilding.com

- 2x6 Nailers
- Trusses 4' On Center
- Patented Concrete Pier Options Available
- Free Estimates
- McElroy Metal (40 Year Warranty)

BUILT-RITE POST FRAME BUILDINGS

- Shops • Garages • Machine Sheds
- Cattle Facilities • Homes
- Horse Barns • Riding Arenas

Serving The Area For Over 35 Years. Locally Owned & Operated.

BOOK NOW FOR SPRING • BOOK NOW FOR SPRING • BOOK NOW FOR SPRING • BOOK NOW FOR SPRING • BOOK NOW FOR SPRING •

GARAGES & MORE
Licensed • Bonded • Insured
Servicing Missouri, Oklahoma, & Kansas

24x30x8

- (2) 9x7 Overhead Doors
- (1) Entry Door
- 4" Reinforced Concrete Floor

Only \$16,605*

*Travel and taxes may apply
Price subject to change due to rising materials cost.

30x50x10

- (2) 10x9 Overhead Doors
- (1) Entry Door
- 4" Reinforced Concrete Floor

Only \$26,480*

*Travel and taxes may apply
Price subject to change due to rising materials cost.

- **29 Gauge Metal**
- **40 Year Paint**
- **22 Colors**
- **Engineered Trusses**
- **Treated Square Posts**
- **Reinforced Concrete Floor**
- **Double-Bubble Insulation Available**

www.garagesandmoreonline.com

Windows & doors can be added to these Packages.
We no longer build in ARKANSAS

Jonathan • 417-455-4633 **Marcus • 417-455-3412**

BOOK NOW FOR SPRING • BOOK NOW FOR SPRING • BOOK NOW FOR SPRING • BOOK NOW FOR SPRING • BOOK NOW FOR SPRING •

American Made Metal Roofing
40 year warranty.....\$2.55

Building In A Box Stud Wall & Pole Barn Kits 40 Year Warranty	29 Gauge 10 year\$2.35 29 Gauge #1 Galvalume \$1.85 26 Gauge Galvalume\$2.30 26 Gauge 40 year\$3.15
--	--

417-553-8697 **PORTABLE BUILDINGS**

We Manufacture Our Own Metal and Trusses
Precut Packages Available

OVERMAN BUILDINGS SUPPLY

REDUCED METAL PRICING

202 S. Prigmor Joplin, MO. 417-553-8697 ★ *29 Gauge 10 Yr. possibly not American made

SUPERIOR METALSALESINC.COM
Metal Building Supplies & Components

Commercial • Agriculture
• Shop Buildings
Custom I-Beam Buildings w/26 ga.
40 Year Warranty on all Prime Steel Panels

HAY BARN 40x75x16
Roof Only • Materials
CALL FOR PRICING DUE TO RISING COST OF STEEL
All American Steel. Install Available.

- 29 Gauge 40 Year, Painted, Warranty.
- 19 Colors Available.

Steel Pricing Fluctuation. Please Call for Quotes
Call For Mini-Storage Quotes

Toll Free 1-888-364-9527
Office 1-417-671-8015
Fax 417-671-8018
Hours: Mon-Fri 8am-5pm
12760 St. Hwy. 76. • Cassville, MO 65625
sales@superiormetalsalesinc.com

Free Estimates
VISA MasterCard

Licensed 30 Years Exp. Insured

HONESTY WARRANTY

JONES BUILDING SYSTEMS
www.jonesbuildingsystems.com
Office 479-644-6336 • Fax 479-657-6701

Metal Buildings
Mini Storage
Metal Roofing
Site Work and Concrete

★ Site Level, Tax, or Distance Not Included ★

RED IRON
Installed Includes Slab 100x125x16 Insulated Incl. 4 O/H & 4 W/I Doors
CALL FOR PRICE

RED IRON HAY BARN
40x75x16 Installed Roof only w/piers
\$33,168

Call about Mini Storage Buildings

RED IRON HAY BARN
Installed 64x75, Roof only w/piers
\$44,875

★ Commercial & Residential★ Heavy Built All American Steel★

BIG NICKEL

B Section Index

AGRI-BUSINESS Page 02
Metal Buildings.....Page 02
Equipment & Supplies.....Page 03
Cattle.....Page 06
Farms & Acreage.....Page 06
Hay/Feed/Seed.....Page 07
Horses & Mules.....Page 07
Livestock-AGRI.....Page 07
YARD SALES..... Page 07
YS-Garage SalePage 07
AUCTIONS & ESTATE SALES Page 09
Auction SalesPage 09

BIG NICKEL DEADLINES

CLASSIFIED LINE AD DEADLINES

AUCTIONS 10am • Mon. B SECTION 10am • Mon.	A SECTION 3pm • Mon. VEH SECTION 3pm • Mon.
---	--

DISPLAY AD DEADLINES

AUCTIONS Noon • Wed. B SECTION Noon • Thurs.	A SECTION Noon • Thurs. VEH SECTION Noon • Thurs.
---	--

MAKE A SPLASH
without wasting cash

Small ads produce big results.
Ask about our advertising rates to fit any budget.

WE'VE GOT YOUR DREAM JOB ON A SILVER PLATTER

Keep up-to-date with dozens of top job postings throughout your local area. Find your perfect new permanent or temporary position in the classifieds!

JOPLIN TRUSS
ENGINEERED QUALITY CONSTRUCTION
2 LOCATIONS TO SERVE YOU:
Stark City, MO
417-472-6800
Hwy. 96 - Avilla, MO
417-246-5215

IDEAL
STRUCTURES LLP
Specializing in Pole Buildings, Garages,
Shops, and General Construction
Marion Sommers PHONE: (479) 335-6230
EMAIL: MarionSommers69@gmail.com
Hindsville, AR 72738

SPECIAL FINANCING OPTIONS

0% Financing Available on ALL NEW MODELS
(with approved credit)

ATTN: FARM BUREAU MEMBERS
Ask about our Farm Bureau Rebates
On ALL MODELS!!

Call Jeremy for Pick up & Delivery Options

NewCo Service
11989 Homer Lane
Neosho, MO
417-451-2660

WALT'S TRACTOR - SERVING YOU FOR OVER 58 YEARS - WALT'S TRACTOR - SIMPLY THE BEST FOR LESS - WALT'S TRACTOR

SPRING SAVINGS SALE!

Since 1967

Walt's Tractor LLC
417.472.7200
12 Miles East of Neosho on Hwy. 86

58 Years

Save NOW on ALL Brands! (In stock units)
Call Or Come By For The Best Deals!

LS Tractor
Excel In Your Field™
More Tractor, More Value, More Satisfaction

Bush-Whacker®
TOUGH ON GRASS. EASY ON YOUR WALLET
The Perfect Mate For ANY Tractor!

Mid Deck

- 125V/52
- 328G4/61
- 329B/61

GRASS HOPPER
IT'S SO MUCH MOWER®
Financing Available (WAC)
Built Tough for the Perfect Cut Every Time!

Front Deck

- 725DT6/61

IN STOCK SALE

4 LEFT!
2024 NEW MACHINES
AT PRICES TOO LOW
TO PUBLISH!

Call For The Best Deals!
www.waltstractorsales.com
Where Service is Always in Season!

AGRI-BUSINESS
Equipment & Supplies

CX-80 CASE Tractor, cab and air, new tires, hydraulic and steering pumps; D-15 Allis Chalmers tractor, wide front, 3 point. For more info 620-215-6098 calls only.

FOR SALE: 1936 General purpose "B" JOHN DEERE tractor, excellent, all original, new rubber all around, with original tear drop draw bar, RUNS GREAT! Also 1-bottom 12" pull type plow and 2-14" pull type plow. \$3500 for all. Call: 620-215-5735.

WANTING TO BUY: Good self propelled swather with draper head for fescue seed. 417-850-8139.

WWW.BIGNICKEL.COM

ADVERTISE YOUR Flea Market or Antique Store in the Antique & Flea Market Directory. Call Billie for more information and special pricing. 417-624-4100

Since 1985 **John's Tractor Works & Equipment Inc.**
*Programs subject to change.

YOUR AGRI. DIESEL SERVICE SPECIALIST

Mon-Fri 8am-5pm
Sat 8am-Noon
3 miles East of Vinita, OK on Hwy 60
40 YEARS OF SALES, PARTS AND SERVICE!
918-256-5774

TL750 SERIES

ASK ABOUT OUR \$4,000 ATTACHMENT BUNDLE CREDIT!

NO DEF

2.99% UP TO 84 MONTHS W.A.C. OR \$6000 UP TO CASH BACK

ALL NEW!

40 YEARS OF SALES, PARTS AND SERVICE!

RX 66-73 HP 0% UP TO 60 MONTHS FINANCING* OR \$5500 UP TO CASH BACK* (T-L)

90-115 HP UTILITY TRACTORS

NEW HX ARRIVALS! HX140HP ARE HERE!

40 YEARS OF SALES, PARTS AND SERVICE!

0% UP TO 48 MONTHS W.A.C. OR \$6500 UP TO CASH BACK * (T-L)

66-73 HP UTILITY TRACTORS

40 YEARS OF SALES, PARTS AND SERVICE!

0% UP TO 60 MONTHS FINANCING* OR \$6300 UP TO CASH BACK* (T-L)

APRIL
fool's
SALE

DON'T FOOL AROUND & MISS OUT!

**NO INTEREST
FOR 84 MO.**
ON ALL COMPACT TRACTORS



**DIY DIGGER
PACKAGE**

1025R TRACTOR

+ Loader
+ Backhoe

\$374/mo*



**SUNFLOWER
PACKAGE**

3025E TRACTOR

+ Loader
+ Box Blade

\$345/mo*



**HAYMAKER
PACKAGE**

5075E (MFWD)

+ Loader

\$720/mo*



**WEEKEND WARRIOR
PACKAGE**

3038E TRACTOR

+ Loader
+ Rotary Cutter +Trailer

\$486/mo*

**\$1,000
BONUS**

ON S250 AND
S300 MOWER
CONDITIONERS

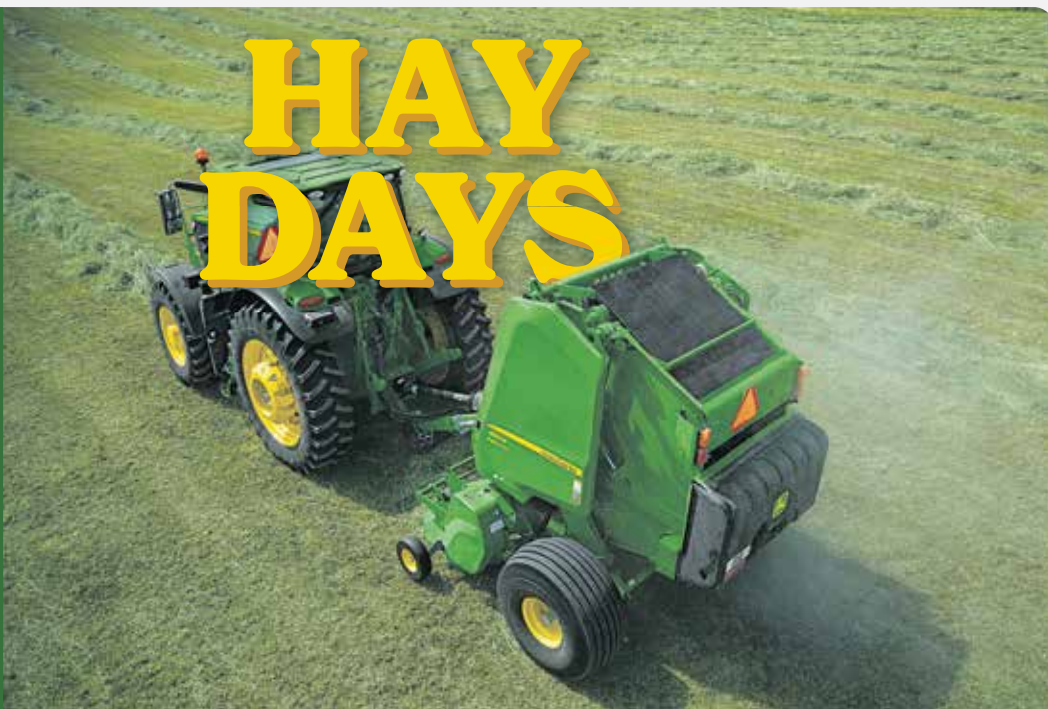
0% FOR 60_{mo}
ON ROUND BALERS

HeritageTractor.com/HayDays

SCAN TO SHOP



Offer ends March 31, 2025. See Dealer For Details.



Heritage
TRACTOR

SCAN TO SAVE



*Offer expires 4/12/25. See dealer for details.

HeritageTractor.com/TractorPackages

Anderson (417) 759-5700

Joplin (417) 208-9062



NO DPF FILTER
TO SERVICE OR
REPLACE SAVES YOU
TIME AND MONEY NO
DOWNTIME NEEDED
FOR REGENERATION



The World's #1 Selling Farm Tractor!

LAMBERT

Tractor & Machinery Sales, L.L.C.

The Largest Mahindra Dealer in Kansas!

8001 S.E. Hwy 66, Galena, KS

www.lamberttractor.com

620-783-1895

We are Open. Curbside Service Available



• SALES • PARTS • RENTAL • SERVICE •



FREE
Hay spear
included

Mahindra 6075 Cab power shuttle, 71HP 4wd self leveling loader
.....**\$709.00/MO**

\$0 Down, 84 Month Financing Available W.A.C.



0% for
72 Mon

Mahindra 5155 shuttle shift 55HP, 4wd, remotes, loader
.....**\$481.00/Mo**

\$0 Down, 84 Month Financing Available W.A.C.



0\$ Down &
0% for 84 Mon

\$17,900.00
CASH

Mahindra 1120, 20hp, 4wd with 54" belly mower and loader.....**\$214/MO**

\$0 Down, 84 Month Financing Available W.A.C.



0\$ Down &
0% for 84 Mon

\$17,350.00
CASH

Mahindra 1126, 26hp, 4wd, w/loader.....**\$208/MO**

\$0 Down, 84 Month Financing Available W.A.C.



1.99% for
72 Mon

Mahindra 1626 HST, 26HP. 4x4, w/loader.....**\$369/MO**

\$0 Down, 84 Month Financing Available W.A.C.



USED Equipment

- John Deere 770, 4wd, 23hp with loader **\$9250.00**
- Used Zero Turn Mowers **Starting at \$1,250.00**
- Used 3-point implements **Starting at \$550.00**

See Full Line Of Used
Equipment & Implements At
lamberttractor.com



Model GTA 26 Set

Regular Price
\$179⁹⁹

FREE AS2 Battery
with purchase
\$60.00 Value



.99% for
84 mon W.A.C.

Financing Specials
.99% for 48 mon W.A.C.

BAD BOY
MOWERS · TRACTORS



BUSH HOG
Performance You Can Count On™

Bushhog BGR72 grapple bucket 72" heavy duty ... **\$4,999.00**

Bushhog RT72G-1X tiller 70" heavy duty **\$3,850.00**

Bushhog RTG84 82" tiller heavy duty **\$4,800.00**

Bushhog 1815, 15' cutter, Flexwing,
F&R chains, **\$21,400.00**

0% for 72 months OR cash rebate (WAC)

OVER 80 BAD BOY MOWERS IN STOCK!

0% FOR 48 MONTHS

ASK about the FREE 5 ft. Cutter Program!

BAD BOY
MOWERS · TRACTORS

LAMBERT

Tractor and Machinery Sales
8001 S.E. Hwy. 66, Galena, KS

620-783-1895
www.lamberttractor.com

badboymowers

YOUR AUTHORIZED
GOOSENECK™ DEALER

Top 10 Dealer in the U.S. for 25 years!

Gooseneck TRAILER MFG. CO., INC.

Trade In's Welcome!

FRYE FARMS TRAILERS
Seneca, MO • 417-438-0146

Let us help you with all your advertising needs. Don't know what to say? Call us we can help! 417-624-4100.

HAVE A PET OR PUPPIES TO SELL? Call us. You can even pay over the phone. 417-624-4100.

INTERSTATE POLE

NO SUNDAY CALLS, PLEASE

★ Commercial ★ Mini Storage ★ Garages ★
★ Horse Barns ★ Shops ★ Agriculture ★

Darrell Knepp • Sarcoxie, MO
417-437-1452 • interstate.buildings@privategarden.org

BIG NICKEL ADS SELL! Call for more information and specials. 417-624-4100.

BE AN EARLY BIRD! Place your ads before Monday and beat the rush!

PRECISION EXCAVATING

Building Pads - Ponds - Concrete
Septics - Roads & Driveways
Land Clearing Demolition
& much more

Matthew Zimmerman
Wyandotte, OK
918-961-2183

Customer Satisfaction Is Our Goal!

Cattle

(6) POLLED Hereford bulls, 18 months old. Semen checked, ready to go.
620-778-8561.
schlatterherefords.com

CRYSTAL SPRINGS LIMOUSIN.

Purebred Limousin Bulls, 12-36 months. Reds, Blacks and Whites. Heifers also. Most polled, bred for calving ease, calm. 41 years breeding Limousin. 417-540-0277.

Cattle

REGISTERED CHAROLAIS
Yearling Bulls. EPDs, BW, WW, YW, big and stout. Weaned heifers and bulls.
Wright's Charolais, Mt. Vernon, MO.
417-466-3560,
573-512-1614
417-466-8117
417-466-8158

Registered Aged advantaged, calving ease, Red Angus, Sim-Angus, Influenced bulls for sale.
DIAMANTE RED ANGUS RANCH
Diamond MO.
Herdsman Jarrod Todd
417-846-3248.

ULTRABLACK & BRANGUS BULLS and HEIFERS
Excellent Genetics. Gentle dispositions. Delivery available. Lots of happy customers!
Discounts for Veterans!
Horsehead Ranch
Talala, OK
918-695-2357
Horseheadranch.net

PUREBRED GELBVIEH Bulls and Heifers ready for new pastures. All Judd Ranch genetics. Both red and black available. Call 918-456-9991 or 918-506-3880.

DO YOU LIKE YOUR PICKUP, SUV, OR CAR? HAVING ENGINE TROUBLE? DON'T TRADE!

DYN-A-TECH
ENGINE REBUILDERS
WILL REMOVE, REBUILD & RE-INSTALL
GET 'ER DONE!
Let Dyn-A-Tech put new life into your vehicle with a re-manufactured engine!

STARTING AT \$2,995*
less external parts
*Price varies by engine type and size

PREPARE NOW FOR WINTER DRIVING!

DYN-A-TECH
ENGINE REBUILDERS
IN THE SAME LOCATION FOR 36 YEARS
620-783-5041
724 W. 7th • Galena, KS

(6 Miles West of Joplin on 7th St.)

Farms & Acreage

Excellent Working Farm/Ranch

\$799,900

Best of the Best!
117.6 Acres, 2 Bedroom, 1 Bath Home, Basement, Wood Burning Furnace Ducted Throughout Home. 40x50 Shop w/ Attached 12x50 Loafing Shed, 42x70 Hay Barn, 34x36 Hay Barn/Livestock Shelter, 2 Ponds, 2 Corrals/Fenced & Cross-Fenced.

Ray Skelton • 417-540-1543
Pro 100 Realtors, Neosho, MO • 417-451-5930



Red Angus

Service Aged Bulls, Red Cows, Cow-Calf Pairs,
Seed Stock, & Show Prospect Heifers

www.oryscircle7.com
Dennis or Joann Ory
417-652-3425

Cattle

REGISTERED RED Angus bulls, 18-20 months old, light birthweight, moderate frame, gentle. Jasper, MO. 417-838-6076.

Limousin bulls, reds and blacks, large selection, bred and open Limousin heifers. Double J Ranch, Will 417-350-9810, 417-214-4567.

(25) BLACK cows, 3-5 years old, some with calves by side. 417-850-1726.

BIG NICKEL ADS SELL! Call for more information and specials. 417-624-4100.

Livestock



POULTRY HOUSE REMOVAL
We buy good quality chicken and turkey houses. Remove the houses and all deconstruction debris. Local professional crews. Serving since 1992.
Cedar Creek Contractors, LLC 785-217-3379.



Oklahoma's Largest Monthly Sale!


Sale first Thursday of every month at the Tulsa Stockyards

Horses @ 5 pm
Saddles @ 4 pm
New Tack @ 3 pm

For more information, call John
405-612-0188

Hay/Feed/Seed

SCHILLING FARMS,
Lamar, MO. 417-209-1667.
•Bermuda, \$200/ton or \$100/bale, barn stored.
•Alfalfa baleage \$200/ton.
•Custom baling, wrapping, \$12/bale.
•Also, looking for ground to lease.


(700) bales of soybean baleage, protein 18%, bales are 4x5 averaging 2500 lbs. 417-235-9712.

PRAIRIE HAY. 3x3 and 3x4 squares, stored inside. Round bales also stored inside.

C&H Hay & Cattle.
620-496-7174.

Call us for all your advertising needs. 417-624-4100.



JOPLIN REGIONAL STOCKYARDS
traditional values & innovative approach

COW AND BULL SALE

Wednesday, April 2, 2025

4:30 PM following regular sale

Expecting bred heifers, several pairs and breeding age bulls!

15 – three to five-year-old F1 tiger stripe pairs with Char cross babies, running back with SimAngus bulls. **30** – three to five-year-old 3/4 Brahman cross pairs with Char babies, running back with SimAngus bulls. **2** – three to four-year-old blaze face 3/4 Simmental 1/4 Angus bulls. Herd sellout. **FMI Jason Pendleton 417-316-1200.**

DHT Angus Bulls

633	09/22/2023	AAA20969496
642	09/19/2023	AAA21192367
643	10/26/2023	AAA20971652
648	09/05/2023	AAA 20912843
652	02/22/2024	AAA20925894
655	03/01/2024	AAA 21190288
656	03/02/2024	AAA 20925403
657	12/07/2023	AAA 21175558
681	10/28/2023	AAA 20934464
695	03/27/2024	AAA 20977779

FMI Sonny and Cecil Huff 417-250-1300.

2 – Registered Charolais Bulls, 18-23 months old, gentle, easy-calving, registration #'s: M999467 & M999463. **FMI Dale Griffin 573-631-2377.**

Complete Dispersal: 45 – black pairs, 4 to 8-year-olds, with calves along side, 1 month to 3 months old, calves out of Worthington bulls. **25** – Mixed reds and yellows, 4 to 8-year-olds, with calves 1 month to 3 months old. **FMI JW Henson 417-343-9488.**

30 – South Pole cows, home-raised, 17 with big calves that will be 3-n-1's, the rest bred 2nd or 3rd period, all have been running back with South Poll bulls. **FMI Larry Mallo-ry 417-461-2275.**

120 – Mixed cows, mostly black, three to six-year-olds, 80 with calves at side, balance will be springing and bred to good black Angus bulls. calves will weigh from newborns to 350 lbs., all the cows will be gentle and truck broke, a good set of cows. **FMI Jr Smith 870-373-1150.**

1 – AI sired Angus bull, 3 1/2 years old. **FMI Dakota Turley 417-259-0433.**

57 – Black fall calving cows, start calving last of August, majority will be 3 and 4-year-olds, a few 5 and 6 but not many, all bred to really good black Angus bulls, good set of gentle easy to handling cows, just switching to all spring calving cows. **FMI Jr Smith 870-373-1150.**

40 – Angus heifer pairs, calves 30 days old, weigh 1100 and fancy. **FMI Skyler Moore 417-737-2615.**

Horses & Mules



535 N. Subway Blvd.
Nevada, MO

Like us on Facebook
@ Heartland Horse and Livestock Sales LLC for future consignments.

SALES 2nd and 4th Wednesday of the month

Owners:
Nathan Collins 620-215-4745
Karrie Collins 620-644-2197

Tack Sale Starts at 5pm with horses and livestock to follow.

Hay/Feed/Seed

QUALITY FEED at Affordable Prices.
16% mixed feed, \$260 a ton, \$250 in bulk; dry distiller grain, \$300 ton;
16% mixed feed in 50lb sacks \$8. 1200lb. box on pallet \$156

Square bales: crabgrass \$9

Bulk price \$10 off board price. Call for details. colleyfeed.com
Located 4 miles west of Stotts City on Farm Road 2120. Contact: Lance 417-316-0574.
Prices subject to change without notice. Call to inquire. Ask about delivery in bulk or super sacks.



HAY: 1st, 2nd and 3rd cutting Mixed grass, 4x5 round bales, net wrapped. No rain. Also have Silage for sale. Call 417-652-7364 or 417-235-9712.

Hay/Feed/Seed

SMALL SQUARE BALES of Lespedeza hay, Teff hay and Prairie hay. 417-540-7845 or 417-394-2671.

(140) Wrapped SUDAN Hay Bales \$65, call Lynford Hostetler at 417-366-0259 Miller, MO.

NEED TO SELL YOUR HOUSE OR PROPERTY? Get the best coverage around. Call the Big Nickel and our helpful representatives will assist you in creating your ad. You can even pay over the phone. **Call 417-624-4100 for more information.**

YARD SALES

Garage Sale



LOOKING for your unwanted treasures! We are accepting donations April 8th & 9th, 9 to 5 at IBEW 3316 S Main Joplin MO. **Proceeds benefit Wildcat Glades Nature Group.** No clothing or electronics please. Small furniture pieces, toys, collectibles, decor, camping gear, tools etc appreciated.



BIG NICKEL

DEADLINES

CLASSIFIED LINE AD DEADLINES

AUCTIONS 10am • Mon.	B SECTION 10am • Mon.	A SECTION 3pm • Mon.	VEH SECTION 3pm • Mon.
--------------------------------	---------------------------------	--------------------------------	----------------------------------

DISPLAY AD DEADLINES

AUCTIONS Noon • Wed.	B SECTION Noon • Thurs.	A SECTION Noon • Thurs.	VEH SECTION Noon • Thurs.
--------------------------------	-----------------------------------	-----------------------------------	-------------------------------------

View more information
(pictures and videos) at
www.joplinstockyards.com,
Cattlemen's View or
JRS facebook! 



Scan Me

I-44 and Exit 22 | Carthage, Missouri
JRS Office 417.548.2333
Skyler Moore 417. 737.2615
Bailey Moore 417.540.4343
Jackie Moore 417.825.0948

Need Extra Cash?



Have you cut back on all the extras like going out to dinner or the movies?

Generate Some Extra Money For Your Pocket!

Now is the Time to Get Rid of Unused Items!

Clean Out The Garage!

Place Your Classified Ad in a 2nd, 3rd or 4th Additional Category for

1/2 Price!

HURRY- Special pricing is for a limited time only!



BIG NICKEL CLASSIFIED ORDER CALL 417-624-4100 OR FAX 417-621-0287

Name _____

Address* _____ Phone _____

City _____ State _____ Zip _____

if using credit card, must be credit card billing address

- Classification _____
- Amount From Form Below \$ _____
- Boxed (Add \$2.00) \$ _____
- Bold & Capitalize First 5 Words (Add \$2.00) \$ _____
- Graphic Options (circle choice) Add \$3 ea. Option \$ _____
- Super Graphic (Add \$5.00) \$ _____
- Include Email address (Add \$2) \$ _____
- Add a Picture (Add \$10) \$ _____
- Include URL (Add \$2) \$ _____

* Required on Help Wanted and OTR & Driver Opport. Classifications

100% Reverse [Boxed/Boldcaps] (Add \$5)

Subtotal \$ _____

of Weeks Ad is to Run _____ x Subtotal= \$ _____



SEE MORE GRAPHIC OPTIONS ON INDEX

Clip your ad and send it with payment to:

Big Nickel
1931 E. 20th, suite 103
Joplin, MO 64802
Or e-mail us at:
classified@bignickel.com
Place your ad online at
www.bignickel.com

*Required information when paying with credit card

CLASSIFIED DEADLINES			
AUCTIONS		A SECTION	
10am • Mon.		3pm • Mon.	
B SECTION		VEH SECTION	
10am • Mon.		3pm Mon.	

BOLD NAME, ADDRESS & PHONE ON COMMERCIAL ADS PRIVATE PARTY

					UP TO 15 WORDS	
					\$13.75	\$11.75
					\$14.75	\$12.75
					\$15.75	\$13.75

Credit Card No.* _____ CC Exp. Date* _____ 3 Digit Verification No.* _____

Payment by check authorizes the Big Nickel to electronically collect returned checks, plus \$25.00 Service Charge.

For other specials or to place your classified

Put the 4-state area distribution of the Big Nickel to Work for YOU!
Call 417-624-4100
Fax: 417-621-0287
www.bignickel.com
Email: classified@bignickel.com

ESTATE FARM AUCTION

SATURDAY, MARCH 29th, 2025 • Starting at 10:00 a.m.
Located at 11354 Thorn Road, Jasper MO. 64755
Directions: From the new Roadhouse Truck Stop at Jasper, MO., go east on Thorn Road. Follow "AUCTION TODAY" signs, on south side of road, up the lane.

AUTO: 1998 Ford Explorer 4 Dr., 4x4, Leather, Nice.

JOHN DEERE, ATV & OLDER SMALL 4 WHEELER: John Deere XUV 835M 348 Hrs., Cab, Air, Heat, Slick; John Deere Gator TH 6x4, One Owner, 236 Hrs; Honda Fourtrax 200SX 4 Wheeler.

TRACTOR: John Deere 2955, Cab & Air, 6,963 Hrs. 18.4.38 Rear Tires.

BUSH HOG: 2715 Legend Bush Hog, Great Shape.

HAY EQUIPMENT & MISC. EQUIPMENT: Versatile Hydrostatic 330 Swather; Walton PTO Tedder; Farm Hand Brand Hay Loader for Square Bales; 5 Bar John Deere Hay Rake; 3 Pt. Heavy Duty Root Cutter; 3 Pt. Heavy Duty 8 ft. Blade; Ford 2 Row Corn Planter.

TRAILERS 1980 Alum. High Side Gooseneck Stock Trailer, 27 ft. Sells with No Title; (LIKE NEW) H&H 6x12 Trailer w/Ramp Tailgate; (LIKE NEW) Gooseneck Hay Express Hay Trailer 36 ft.; Heavy Duty 24 ft. Gooseneck Flatbed; Flow EZ Gravity Wagon w/Hydraulic Auger; Donahue Gooseneck Killbras 400 Bu. Bottom Dump; Sprayer w/Booms, Gas Powered Motor.

FENCING ITEMS (9) Rolls of New 4 pt. Barbwire; 6 ft. (100) or more New Steel Post, Still Bundled, Orange Color.

CATTLE ITEMS: Squeeze Chute w/Auto Headgate; (4) Concrete Feed Bunks; Lil Creeper Feeder; Some Poly Feed Troughs.

OLD GAS PUMP & WELL PUMP: Sinclair Gas Pump; Old Well Pump.

MOWERS, TOOLS & MISC. GENERATOR: Bad Boy 726 Maverick 60" Deck, 236 Hrs.; Yard Machine 42" Cut Riding Mower (Like New); Craftsman Tool Box & Tools; Cutoff Saw; Briggs & Stratton Elite Series 8500 Watt Generator; Shark Power Washer; Stihl MS 180 Chainsaw; Floor Jacks; Battery Chargers; Several Hand & Garden Tools: Shovels & Etc.; Grinder, Wrenches, Drills & Etc.; LOTS OF MISC. NOT LISTED.

GRAIN SHEDS: (2) TIMELINE Grain Sheds, Nice & Well Kept.

SADDLES & TACK: (3) Saddles -One is Parade Saddle (Fancy); Leather Chaps; Tack; Bridles; Spurs: Saddle Racks; Wagon Seat Bench; Western Hats & Boxes: Stetson, Resistol & More 7-1/8 Size.

HOUSEHOLD ITEMS & APPLIANCES: Frigidaire Fridge White, Good, In Garage; Maytag Washer, White, Newer; Whirlpool Electric Dryer, Glass In Door, White, Newer; Chest Deep Freeze, Good.

MEDICAL EQUIPMENT: (4) Handicap Battery Powered Scooters & Chairs; Wheelchair; Hospital Bed Lift.

KITCHEN ITEMS: Professional Series Stainless Flat Top Electric Range (Nice); GE Stainless Side by Side Refrigerator, Water & Ice In Door, (Nice); Hamilton Beach Microwave; 6 ft. Harvest Table (Pine); Lots & Lots of Pots, Pans, Dishes, Platters & Etc.; Franciscan China; Oak Oval Table w/(6) Chairs; Crock Bowls & Jugs.

SWEEPERS: Hyla Electric Sweeper & Attachments; Oreck Sweeper.

FURNITURE: Oak Roll Top Desk, Modern; Antique Lamp Table; Sofa Table; Divan w/Recliners on Ends;(Nice) Oriental Carved Coffee Table & Matching Lamp Tables; Large Samsun Flat Screen; Sanyo Flat Screen; Oak Custom Built Gun Chest (Nice); Queen Size Bed, Box Springs & Mattress; King Size Bed, Box Springs & Mattress; Upright Oak Chest; Antique Oak Drop Front Desk, Pigeon Holes; Insignia TV; RCA Stereo, CD & Disc Player (Like New); Misc. Bedding; Antique Oak Wash Stand & Towel Bar; Queen Size Bed Bookcase (Nice); Computer Cabinet; Old Oil Lamps; Lots of Misc. Lowel Davis Figurines; Toy Metal Tractors & Trucks; Small Safe. Lots & Lots More Not Listed!

GUNS:Guns will sell around 2:00 p.m. (plus or minus)- Winchester Model 1901 10 ga.; Browning A5 16 ga.; Winchester Model 97 12 ga.; Mossberg 600 12 ga.; Winchester Model 97 12 ga.; Browning A5 20 ga.; Marlin Model 60 Golden 22 LR; Remington Speed Master Model 241 22 LR; Bridge Gun Company 20 ga. Single Shot; Hopkins/Allen Rolling Block 12 ga.; Remington Model 11000 12 ga.; Victor 12 ga. Single Shot; Remington Model 11 12 ga.; Winchester Model 1906 22 SLLR; Stevens Little Scout 14-1/2 22LR; Model 98 German 8 mm Mauser; Browning Light Twelve 12 ga. Belgium; Browning Magnum 3" 12 ga. Belgium; Browning 16 ga. Special Steel Belgium; Remington Wing Master 870 Light Weight 28 ga. Imp. Cyl.; Black Powder Pistol 45 cal.; Lots & Lots of Ammo for Above Guns.

Nothing removed Until Settled For, Not Responsible for accidents. Theft or Brokerage Terms: Cash or good Check with proper ID
www.columbusauctionbarn.com
Check our website for photos & upcoming auctions.

ESTATE OF JERRY WELDY

AUCTIONEERS

JACK GARNER **Delbert Rowden**
417-438-0468 620-762-2416

MIKE TORCHIA
620-674-2485

ADVERTISE YOUR Flea Market or Antique Store in the Antique & Flea Market Directory. Call Billie for more information and special pricing.
417-624-4100

**If You Want To Sell.
We're The Ones To Tell!!**



Jim Lievens
417-455-5311 • 417-434-4528 Mobile
www.circlelauction.com
Check website for photos

AUCTIONEERS NOTE -
EXCELLENT AUCTION! WE Have Great Tools & A Good Selection, Storage Building, Lot Of Yard Concrete Items, Riding Mower MAYTAG Ice Cream Maker, Large Lot Of Records, And Lots More! This Is The First Of 2 Auctions! April 5th Is The 2nd Sale! Check Web Page For Photos! Everything Is Well Kept! Don't Miss!!

ESTATE AUCTION

SUNDAY, MARCH 30TH, 2025 12 NOON

ESTATE OF MR. & MRS. JOE & DARLENE BARNETT

505 ONEIDA ST., SENECA, MO

DIRECTIONS: FROM CHEROKEE ST. & ONEIDA ST. (JUST NORTH OF RAIL ROAD TRACKS), TURN WEST ON ONEIDA ST. & GO TO SALE ON RIGHT!! (JUST PAST POLICE STATION).

TRAILER: 12FT Flatbed Lawn Mower Trailer

BUILDING & TOOLS: 10FT X 16FT STORAGE BUILDING, CRAFTSMAN Rolling Tool Box, Bench Vises, Planes, Alum Extension Ladder, 1FT Sheet Metal Brake, CRAFTSMAN Bench Grinder, Gas MAYTAG Ice Cream Maker (ANTIQ), CENTURY Mig Welder W/Argon, ACETYLENE Torch Complete, CRAFTSMAN Upright Air Compressor, LINCOLN Arc Welder, Rolling Battery Charger, Engine Lift (Cherry Picker), Engine Stand, Furniture Clamps, C Clamps, Punches & Chisels, Floor Model Drill Press, Drill Press Vises, Stair Tread Pickup Tool Boxes, Tool Boxes, Pullers, Bars, Shovels, Rakes, Hoes, Pitch Fork, Hand Saws, Drop Cords, BRASS Steam Gauge, Creeper, Welding Helmets - HOBART & Others, Steel Work Benches, Plyers, Hammers, End Wrenches, Push Plow (#2 Boy Scout), Large CAST IRON Kettle, CAST IRON Tea Kettle, Wheel Barrow, House Jack, Jack Stands, CAST IRON, Squares, 2 Wheel Dollies, POWER TOOLS - Saws, Grinder, Sanders, ETC!, Solder Gun, Solder, Welding Rod, Timing Light, Rods & Reels, 5000 Watt Generator, Portable Air Compressor, Leaf Blower, CRAFTSMAN Air Hose Winder, CRAFTSMAN Radial Arm Saw, DEWALT Chop Saw, Grain Scoop, Floor Jack, Stock Roller, Cotton Scale, Bulk Oil Pump, Cotton Scale, Bulk Oil Pump, Boomers, Pipe Dies, Parts Washer, Tractor 3PT Stabilizers, Cistern Pump, Pump Cup (CAST IRON), CRAFTSMAN Lathe Tools, Lot Of Pipe Wrenches, Model T Coils, Chain Saw, Spark Plug, Cleaner, Pipe Cutter, Tool Boxes, Lead Ladles, Lead Pot, Jack Stands, Pullers, 1917 Shaping Stone, Value Spring Compressor, Cylinder Hone, Ridge Reamer, BRASS & GLASS Oilers, BRASS Steam Gauge, FORD 8N, 9N, 2N Tractor Manuals, MCCORMICK Tractor Manual, HIT & MISS Engine Manual, # 4 1/2 Bailey Plane, KEEN KUTTER Plane, Corn Sheller, Power Mower, YARD MACHINE ZERO-TURN Riding Mower, BB Pellet Rifle, Drill Bits, Router Bits, Beam Jack.

MISCELLANEOUS: Large Record Collection, Wrought Iron Ice Cream Table & Chairs, 2 Door Metal Storage Cabinets, Wood Storage Cabinet, Lot Of Outdoor Christmas Decor, Oils, Cleaners, Sprays, Paint, Deck Screws, Hardware, Concrete Tiered Fountain, Concrete Yard Figurines, Arbor, Plant Hooks, Concrete Bird Baths, PHILLIPS 66 Trucks, PHILLIPS 66 Ashtray, Invalid Items, Walkers W/Seat, Cleaners, Paint, Sprays, Laminate Flooring, Books, Concrete Planters, Wood Adv. Box, Electrical, Paper Cutter, Yard Gate, Oil Heater, Log Rack, Metal Shelving, Puzzles, Cassette Tapes..AND LOTS MORE!!! **CHECK OUT WEBSITE FOR FULL LISTING & PHOTOS!**

WWW.CIRCLELAUCTION.COM & FACEBOOK!!! ANGELS FOOD BUS WILL BE THERE!!

SEE YOU SUNDAY 12 NOON!!!

ID required for bidder number - Not responsible for accidents - Lunch - Terms Cash/Visa/MC/Discover - Preview by Appointment

Real Estate and Estate Auction

Friday, April 11, 2025 **STARTS @ 9:01 A.M.**



For more information and pics: www.chuppsauction.com

ADDRESS: 1915 Iron Gates Road • Joplin, MO 64804

DIRECTIONS: From I-44 in Joplin, MO, Exit 4 - Take Hwy 43 North 4-1/2 mi to W. 20th St. Turn Left (W). Go 3/10 mi to Iron Gate Rd. Turn Rt. Auction on Right. Street Parking Only

2 COMMERCIAL BUILDINGS in JOPLIN

1905 & 1915 Iron Gates Rd

*** OPEN HOUSES ***

Monday, March 31st & April 7th
from 4 - 6 pm



SELLS ABSOLUTE - NO RESERVE!



Lots More Items
NOT LISTED
TO BE ADDED!

This versatile commercial property, spanning over 0.7 acres (220' x 140'), is currently operating as a machine shop and includes two well-equipped buildings with city utilities and 3-phase electric. **Building #1** is a 45' x 100' red iron frame structure, featuring two overhead doors (8' x 10' & 9' x 7'), a loading dock, heated warehouse, office, and bathroom, fully insulated with a concrete floor. **Building #2** is a 40' x 30' red iron frame structure with an additional 10' x 12' shed, three 12' x 12' overhead doors, a heated interior, bathroom, and concrete flooring, with city utilities available but not currently connected. Ideal for commercial, industrial, or storage use, this property offers functionality and adaptability for various business needs. Sells Absolute, No Reserve.

TERMS: 10% down day of sale, min. \$10,000, non-refundable, no buyer contingencies, close in 30 days. 10% Buyers Premium (Real Estate Only), No Reserve, Absolute Auction.

DALE and MARIA CHUPP

Coldwell Banker Select

(918) 630-0495

TERMS: Cash – Credit Cards – Check with Proper ID – OK Sales Tax Applies unless exemption is shown. NOT RESPONSIBLE FOR ACCIDENTS. ANY ANNOUNCEMENTS DAY OF SALE SUPERSEDES PREVIOUS ADVERTISING.

CHUPPS AUCTION & REAL ESTATE

Stan Chupp
(918) 638-1157

Dale Chupp, Realtor
Coldwell Banker Select
(918) 630-0495

Jonathan Miller
(918) 237-7582

A black and white photograph of a waiter in a tuxedo and bow tie, holding a large, ornate silver platter. The platter is empty and reflects light. The waiter is standing and facing forward.

WE'VE GOT YOUR DREAM JOB ON A
SILVER PLATTER

*Keep up-to-date with dozens of job postings throughout your local area.
Find the perfect permanent or temporary position in the classifieds!*

AUCTIONS & ESTATE SALES

Auction Sales

ATTENTION!
DOWNSIZING SALE
at this beautiful
5000 sq.ft. home!
4400 Eden Hall Lane
Joplin, MO

Fri. March 28: 9am-4pm
Sat. March 29: 9am-4pm

Fantastic primitive cabi-
nets; harvest table with
8 chairs; beds; dressers;
2 sofas; metal patio fur-
niture; authentic signs
including a Connor Hotel
sign; Kitchen-Aid mixer;
lots of decor; 2 wash-
er/dryer sets; a 1998
Chevrolet Suburban; out-
door heaters.

No early sales. We ac-
cept cash and cred-
it/debit card with a 3%
convenience fee.
Go to Connie's Estate
Sales on Facebook
for photos.

Auction Sales

ESTATE/ MOVING SALES

NEED A SALE?
Estate, Moving,
Downsizing?
Homes, Farms, Business,
Furniture, Cars, Trucks,
Tractors.
Just Get Organized
417-825-7003 Suzanne
Serving area 18 years.

Call us for all your advertising
needs. 417-624-4100.

SMALL ADS,
BIG
RESULTS!

Small ads produce big results.
Ask about our advertising
rates to fit any budget.

Auction Sales

FISHING TACKLE
COLLECTORS SHOW &
CONSIGNMENT AUCTION
BUY - SELL - TRADE

When - Sat. March 29th
Where - VFW Hall
110 Veterans Way Joplin Mo.
Time - 9am to 3pm
Auction starts at 12pm
Terms: Cash-Check-Paypal-Venmo
Free Free
Admission Appraisals

TABLE RESERVATIONS OR QUESTIONS
ABOUT CONSIGNING ITEMS FOR THE
AUCTION PLEASE CONTACT
CASEY JONES
417-276-1812
bucknbass2008@hotmail.com

Need something? Let us help
you. You can advertise that
you are looking for a special
item.Call 417-624-4100 for
more information.

Advertise your Flea Market or
Antique Store in the Antique
& Flea Market Directory. Call
Billie for more information and
special pricing. 417-624-4100

ESTATE AUCTION

Saturday March 29th at 10:00 A.M.
Auction Will Be Held at 830 W Elm Street, Columbus, Kansas 66725.
Selling Personal Property, Household Items & Vehicle.

Vehicle – Nice Clean 1998 Chrysler Sport Caravan 131352 miles
New Tires **Tools** – Hand Tools, Long Handled Garden Tools, Power
Tools, T Post Driver, Yard Cart, Yardman 42” lawn Mower, Craftsman
Air Compressor, Battery Charger, Craftsman Push Mower, Wheel
Barrow, Generator, Shop Vac, Garden Hose, Weedeaters, Ladders,
Air Compressor **Gun** – Mass Arms Single Shot 12 Gauge Shot Gun
Appliances – Stainless Steel LC ThinQ side by side Refrigerator,
Sharp Microwave, Kenmore Electric Cook Stove, Avanti Wine Cooler,
Frigidaire Ice Box, Several Flat Screen TV’s, Maytag Washer, LC
Washer & Dryer Set, **Furniture** – Couch, Kitchen Table and 4chairs,
Office Furniture, Desks, File Cabinets, Office Chairs, Books Cases,
Recliners, Pool Table, Yard Swing, Patio Furniture, Matching Bar Stools
and Table and Chairs, Dining Room Table and 8 Chairs, King Size
Bedroom Set, Cedar Chest, King Size Bed, Futon, Dressers, **Antiques**
– Oil Lamps, Cream Can, Butcher Top Table, **Miscellaneous** – Pots,
Pans, Dishes, Electric Skillet, Coffee Pot, Utensils, Clocks, Crock Pots,
Corning Ware, Stoneware, Pyrex, Chain Saw Log Carvings of an Eagle,
Bear, Buffalo Head, Flying Eagle, Indoor Patio Plants, Deer Mounts,
Cooks Books, VHS Videos, Lots of Yard Art, Bird Baths, Concrete
Statues, Cardinal Red Bird, Hose Reel, Grill, Smoker, Small Feed
Trough, Swing Set, Merry Go Round, Pet Carrier, China Set, Pictures,
Western & Indian Décor, Lots of Nutcrackers All Sizes, Dog Statues,
Sewing Machine, Lots of Holiday & Seasonal Décor, Fly Rod, Ladies
Purses, Giant Teddy Bear, Lots & Lots of Miscellaneous.

Auctioneers Note: We will be offering a very nice van and appliances
in this auction. Come out for some very good household items and some
unusual items to be had.

TERMS: Cash or Good Check with Proper ID. Nothing removed
until settled for. Not responsible for accidents, Theft or Breakage.
Refreshments and Bathroom Provided.

Estate of Alice White

AUCTIONEER:

David Holmes 620-674-2183 www.davidholmesauctions.com
Clerks: Ron Holmes, Laura Holmes &, Donna Westervelt

FIND THE
PERFECT PET
FOR THE
PERFECT PRICE
IN THE
PERFECT PLACE
FOR DEALS

Find your next fluffy,
feathered or furry friend
in your local newspaper
classifieds!



COME BID IN PERSON OR BID FROM HOME - YOUR CHOICE!
LIVE ON-SITE AUCTION WITH ONLINE BIDDING!



SIMULCAST EQUIPMENT & MORE AUCTION!
Auction 1PM Sunday, March 30th
28300 S 620 Road – 1.1 Mile N of NAPA Store
North Cherokee Street, Grove, Oklahoma
Bid Online NOW! Viewing 1:00-2:30 PM, Saturday, March 29th
Pick Up Purchases Auction Day & Starting at 9AM Monday, 3/31
MOTORCYCLES – LIKE NEW! '10 Harley Ultra, 5.5K Miles • '09 Harley Fat Boy, 4.5K Miles • *Always Garaged!*
VEHICLES & TRAILERS: '89 Freightliner, 425 Cat, & 29' Dump Trailer • '05 Dodge Dart • '78 Dodge “American” Motor Home • '06 GMC 1 Ton Box Truck, Engine Fire Damage • Salvage IHC 1 Ton Dump Truck • 18' Car Hauler Trailer • Motorcycle Trailer • 20' Cargo Truck Bed For Storage!
CONSTRUCTION EQUIPMENT: Fiat/Allis 16B Dozer • Salvage TD15 Dozer • Champion Road Grader •
CANNABIS EQUIPMENT: Like New NOR “Trimator Dry” Cannabis Bud Trimmer • Mars Hydro Grow Lights • Grow Tables • Grow Fans • Hisense Dehumidifiers • Plastic Water Tanks • Misc Pumps & Chemicals • Supplies & MORE!
LUMBER – LUMBER – LUMBER! : Sections Of Maple Wood Bowling Lanes, Make Furniture! Flooring! Counters & More! • Stacks of 2x4's – 2x6's – 2x12's - 4x4's - & More! • New Doors & Windows •
STORE & CAFÉ EQUIPMENT: Walk-In Cooler, Disassembled Ready To Move • Electric Café Grill • Bunn Coffee Maker • Cash Register • Café Kitchen Work Table • Small Countertop Popcorn Machine • Ass't Small Kitchen Appliances • Triton ATM Machine • Cash Register • Ass't Glass Display Cases • Trophy Case • Metal, Wood & Wire Shelving • HD Tables Made Out Of Maple Bowling Lanes • Small Round Café Tables • Ass't Chairs & Stools •
YAMAHA DJ SOUND EQUIPMENT: Yamaha DBR12 Speakers • Yamaha MG10XU PA Mixer • Notebook Computer & Extra Monitor • Stereo •
LOTS OF MISCELLANEOUS!!!! Stihl Weedeater • Gas Blower • Gas Tanks • Winch • Large Trash Cans • New Stock Tank • Beauty Shop Sink • Washer & Dryer • Fans • Christmas Trees • Decorations • Patio Bench • Dolly • Aluminum Ramps • Rifle Case • Wagon • Exercise Equipment •
GARY BRADLEY, OWNER - 10% Buyers Premium - Credit Cards Accepted
J.B. ROBISON AUCTIONEERS
Since 1982 - 918-256-5524
Information & 100's of Photo's at
JBRauctions.com
SCAN THIS QR CODE & GO TO THE AUCTION!

RETIREMENT AUCTION
COMPLETE LIQUIDATION
BIG Country Liquidators, Auction & Appraisal Services
5125 W. 7th St. Joplin, MO. 64801
Auctioneer – DW Walker (417) 332.7521
Saturday, April 5th @ 10 a.m.

Dutch Modern Furniture Furniture Household Items Home Décor Artwork Glassware Appliances including New Stove New Refrigerator King & Qn Beds Bedroom Sets Coffee Makers Tanning Bed Poker Table Antiques Collectables Autographed Guitar by Charlie Daniels, Travis Tritt, & Many More AND SO MUCH MORE! SOMETHING FOR EVERYONE!!!	Video Cameras Video Camera Tripods Office Desks Conf Rm Table Display Cases Pretzel Warmer Counters File Cabinets Computers Approx. 25 Laptops Approx. 30 Printers Approx. 30 Monitors Coins Jewelry Old Watches Pocket Knives RV Toilets RV Cords RV Supplies Plumbing Supplies Bathroom Sinks	TOOLS of every kind Flatbed Trlr Stock Trlr 20' Gooseneck Trlr, Flatbed, w/ 14K Axles 28' Enclosed Cargo Gooseneck Trlr 14' Utility Trlr 8N Ford Tractor 5' Bush Hog 2005 Dodge Ram 1500 Pickup 2006 Dodge Ram 1500 Pickup 2008 Ford F450 Pickup Tires & Wheels Guns (Hand & Long) Gun Safes English Riding Saddles Shelving Weed Eaters Chain Saws Gas Cans SEE YA THERE!	
---	---	---	--------------------------------------

Auctioneer – DW Walker (417) 332.7521
Estates—Real Estate—Farms—Equipment— Home Goods—& More
For Photos & More Info Go To:
1) BIGCountry Liquidators Facebook OR
2) AuctionZip.com / BIG Country Liquidators & Auction Service / Auctioneer ID # 54205

Auction Sales

SATURDAY AUCTION
SATURDAY, MARCH 29TH, 2025 10:00AM
28679 PINE RD, ASBURY, MO 64832
DIRECTIONS: SOUTH OF MO-KAN DRAGWAY ON HWY 171, ONE MILE TO PINE RD, TURN RIGHT (EAST) ON PINE, 1 1/4 MILES TO AUCTION, OR ONE MILE NORTH OF ASBURY ON HWY 171, 9 MILES NORTH OF CARL JUNCTION ON HWY 171 (ONE MILE NORTH OF ASBURY AND 1.25 MILES EAST).
LUNCH AVAILABLE * WATCH FOR SIGNS * BATHROOM PROVIDED
SALVAGE: TRIPLE AXLE GOOSENECK TRAILER, FRAME ONLY; ASSORTED TRAILER AND FRAMES, BUMPER AND GOOSENECK; CAT BACKHOE, MODEL 416; 16FT X 5FT GOOSENECK TRAILER, NEEDS REPAIRED; SMALL UTILITY TRAILER 8FT X 5FT; GOOSENECK TRAILER WITH 18FT BOX BED, ANGLE AXLE DUALS; 1965 OLIVER TRACTOR 1650 SALVAGE; WHITE OLIVER 1755 TRACTOR, SALVAGE; ALLIS CHALMERS 190 SALVAGE; ALLIS CHALMERS TRACK LOADER HD6; ALLIS CHALMERS 2 ROW CORN HEAD FOR SALVAGE; CULTIVATORS FOR SALVAGE; 2 ROW JOHN DEERE PLANTER SALVAGE; 2 VERMEER 605F BALER, SALVAGE; MASSEY FERGUSON 12 SQUARE BALER, SALVAGE; ANTIQUE MANURE SPREADER, SALVAGE; 4 BOTTOM PLOW FOR SALVAGE; WATER BULK TANK FOR SALVAGE; GALE GRINDER MIXER, SALVAGE; 1988 REGAL BUICK CAR, 2 DOOR, SALVAGE ONLY; SALVAGE I BEAM; WOOD FURNACE.
FARM EQUIPMENT- MOST SALVAGE: DUMP RAKE; LARGE A FRAME FOR CHAIN FALLS; 3 POINT FIELD DIGGER; FAST HITCH SPRING TOOTH; 8 V WHEEL RAKE; MASSEY FERGUSON 35 SIDE DELIVERY RAKE; 6 FT 3 POINT BLADE; LONG DISC MOWER, NEEDS CURTAIN MODEL 2009; ANTIQUE HORSE DRAWN PLOW; EXTRA LARGE LOT OF NEW BARBWIRE, STEEL POSTS; JEFFERSON 3 POINT POST HOLE AUGER, 12 IN BIT; SQUEEZE CHUTE WHEEL MOUNTED; 5 BOTTOM INTERNATIONAL PLOW; 3 POINT FIELD DIGGER; 3 POINT BOOM SPRAYER, TRAILER MOUNT; INTERNATIONAL 510 GRAIN DRILL; ROTARY HOE; ALL KINDS OF PRIMITIVES; HAY HOOKS; MANURE SPREADER FRAME; 3 POINT DISC SALVAGE; CRUST BUSTER 15 FT BATWING BRUSH HOG.
VEHICLES & PARTS: 8FT X 7FT TRUCK FLATBED; 1967 FORD TRUCK WITH 13 FT DUMP BED; 1962 CHEVROLET C60 GRAIN TRUCK WITH 14 FT DUMP BED, SINGLE AXLE, 4 AND 2 TRANSMISSION, YEAR?, 6 CYLINDER; 1984 FORD F250, CABIN CHASES, STANDARD TRANSMISSION, V8 MOTOR; 1983 FORD 800, CABINET CHASSEY, 2 TON, 4 AND 2 TRANSMISSION, V8 MOTOR; 2 TON ENGINE HOIST; YAMAHA BIG BEAR 400 FOUR WHEELER, AS IS- NEEDS REPAIRED;1962 BUICK; 2 MID 50 CHEVY PICKUP CABS ONLY; 1989 GMC SIERRA 3500 3/4 TON; EARLY 50S CHEVY 1.5 TON TRUCK.
TOOLS & HARDWARE: LOT AND LOTS OF ASSORTED SCRAP IRON, ALL KINDS; 4 WHEEL WAGON GEARS; LARGE PIPE RACK AND ASSORTED PIPE, ALL SIZES, UP TO 9 IN; PLUMBING SUPPLIES, ALL KINDS, PVC, PIPE; POWER TOOLS; FIBERGLASS EXTENSION LADDERS; CHAIN HOOKS; BENCH VISES; 17FT GALVANIZED BARN TIN; WELL PULLEY; 2 MAN CROSS CUTS AND ASSORTED HAND SAWS;CHAIN HOIST; 2 PRESSURE WASHERS, CAMPBELL HOSTELS 2400 PSI, CARTRIDGE 3000, AS IS; LOTS OF ASSORTED CHAINS; GATE HINGES; CHARGE AIR PRO 6.5 HORSE, 60 GAL AIR COMPRESSOR, 220 VOLTAGE- NEEDS REPAIRED; CENTURY 200 AMP BATTERY CHARGER; LINCOLN 225 AMP WELDER; SCHUMACHER 200 AMP, 12 VOLT BATTERY CHARGER; ANTIQUE OIL AND DIESEL CANS; PLATFORM SCALES; ASSORTED WHEEL BARROWS; OLD MANUAL TIRE MACHINE; 3, 300 GALLON FUEL TANKS WITH STANDS;LARGE I BEAMS; APPROXIMATELY 14 WOOD POWER POLES, 75FT LONG, LARGE DIAMETER, AT DIFFERENT LOCATION.
FURNITURE: WOOD CHAIRS; ELRECO DOUBLED SIDED OVAL SIGN 7FT WIDE 5FT TALL; 2 BEIGE ROCKER RECLINERS; MEDITERRANEAN STYLE HUTCH; 3 CUCKOO CLOCKS; ASSORTED LAMP TABLES; ROYAL M WINDSOR CHINA SET; BURGUNDY LIFT CHAIR; BURGUNDY WING BACK CHAIR; 3 CUSHION CRAFT MASTER PLAID SOFA; FLOOR LAMP WITH FOOT SWITCH; 3 PIECE QUEEN SIZE POSTER BED WITH MATCHING DRESSER AND CHEST; PINE 4 DRAWER BABY CHEST; SMALL 2 DOOR STORAGE CABINET; MAPLE DINING TABLE AND 6 CHAIRS.
SIGNS: DERBY GASOLINE SIGN; AUTHORIZED ARIENS DEALER VINTAGE METAL ADVERTISING SIGN; SHELL MOTOR SIGN; ELRECO DOUBLED SIDED OVAL SIGN 7FT WIDE 5FT TALL.
KITCHEN: COOK BOOKS; COOKIE JARS; 2 PAIRS OF ICE TONGS; ASSORTED GLASSWARE; SMALL FRUIT BASKETS AND LIDS; ASSORTED FRUIT JARS; ASSORTED PANS, ROASTERS; MILITARY FOOD CONTAINER; CAMBRO INSULATED TRIPLE SERVER FOOD CARRIER; ASSORTED POTS AND PAN; SADD IRONS; GRISWOLD WAFFLE IRON.
MISCELLANEOUS: OLD LICENSE PLATES; ANTIQUE IRONWORKER WRENCHES; OXYGEN ACETYLENE TANK; 4 ANTIQUE SLEDS; NUMBER 2 WASH BUCKET; NUMBER 3 WASH BUCKET; ARMY METAL AMMO CANS; CHAIN BOOMERS; ASSORTED BICYCLES; ASSORTED LAWN AND GARDEN TOOLS; IRON WAGON WHEELS; WOOD ROCKING HORSE; VINTAGE HATS; SMALL LOT OF PORCH WROUGHT IRON RAILS; COWBOY BATHTUB; WOOD PEPSI CRATES; NYLINT FIRE TRUCK; WOOD TRAIN SETS; WOOD TOYS; ARTS AND CRAFTS, YARN, SEWING SUPPLIES, THREAD, MATERIAL, CROCHET; PAPER RACK; COW BELLS AND SHEEP BELLS; ASSORTED OIL LAMPS; ASSORTED SWAG LIGHT; METAL DOLL HOUSE; ASSORTED IRON WHEELS; CHARLIE MCCARTHY VENTRILOQUIST DUMMY.
NOTE: LIFETIME COLLECTION! SPACE ABSOLUTELY PROHIBITS LISTING EVERYTHING! EXTRA LARGE LOT OF SALVAGE EQUIPMENT. GOOD COLLECTABLES AND PRIMITIVES. WE WILL SELL TWO AUCTION RINGS ALL DAY! TRACTOR WILL BE AVAILABLE TO LOAD AFTER THE AUCTION AND ON SUNDAY. BRING TRAILERS AND BE READY TO HAUL!
ESTATE OF JOHN BLEVINS, SHARON GLOYER & ALETA GREATHOUSE- OWNERS
TERMS: CASH, CHECK, 4% CONVENIENCE FEE FOR DEBIT & CREDIT CARDS.
10% BUYERS PREMIUM ON ABSENTEE & PHONE BIDS, PROPER I.D. REQUIRED FOR FOR BIDDER NUMBER, NOT RESPONSIBLE FOR LOSS OR INJURY!
VENTURE GROUP AUCTION
Featuring
BOB LASSWELL
Professional Auctioneer Since 1977
417.850.5444
PREVIEW ONLINE
WWW.VENTUREGROUP.AUCTION
ANY ANNOUNCEMENTS THE DAY OF AUCTION SUPERSEDE ALL PRINTED MATERIAL

LOCAL MATTERS
Please support the advertisers that power your hometown paper.
NEWSPAPERS MATTER
NOW MORE THAN EVER



 **BIG NICKEL**

New and improved Big Nickel website
WWW.BIGNICKEL.COM

- E-edition
- Interactive Auction page with calendar, directory and auction ads
- Fresh and relevant editorial content
- Direct links to advertisers' websites.
- Marketplace of advertisers with each week's ads, as well as expanded listings with hours, directions and business highlights for featured advertisers.
- All ads organized by category on one page
- Exciting promotions and enter to win contests!
- Business and reader spotlights!
- Location finder for picking up a paper copy of the Big Nickel!
- Self-service classified liner ad purchases

For questions or to place an ad, call: **417-624-4100**

REAL ESTATE & ESTATE AUCTION

Saturday, April 5, 2025 ~ 10:00 AM

LOCATION: 221 East Morrison Ave, Jasper, MO (Watch For Signs)

Auction For Megan & The Late Lynn Neher

Home Is A 3 Bedroom, 1 1/2 Bath That Has Kitchen, Dining, Living, Family & Utility Rooms W/Wide Open Flow Spacing, Has Brick Front Base & Metal Roof W/Deck On Back Of House. Home Does Need Some Updating But Is A Solid House Overall, Has 2 Car Attached Garage W/Attic & 1/2 Bathroom. Home Is Setting On Lg Corner Lot W/Lots Of Yard That Also Has 2 Car Unattached Garage/Workshop & 2 Other Outbuildings. **To Preview Contact Bill At 417-214-0093.**

Terms: 10% Down Day Of Sale With Signed Contract And Balance Due In 45 Days Or When Closing Date Set By Abstract Office. Seller Has The Right To Accept Or Reject Any And All Bids. **Never A Buyers Premium At Our Real Estate Auction!!!** Also Selling Carport, Zero Turn Mower, Outdoor, Large Collection Of Lawn Boy Mower Parts & Inventory, Antique & Modern Furniture, Appliances, Antiques, Primitives, Households. See Next Weeks Paper For Complete Listing.



NANCE AUCTION SERVICE

No Matter How **BIG** or small, We Do Them All!!!

Col. Bill Nance 417-214-0093

nanceauctionservice.com

In God We Trust • Philippians 4:13

ON SITE ESTATE AUCTION

Sunday March 30th @ 1:00 PM

3120 Old Dike Rd. • Grove, OK. 74344

NOTE: AUCTION WILL BE SUNDAY MARCH 30TH. WE WILL START AT 1:00 PM. LOCATED IN BUFFALO SHORES. **STORM SAFE ROOM**

Winchester model TS-22 gun safe; Maytag washer; Whirlpool Cabrio dryer; Frigidaire refrigerator; microwave; dining room table w/6 chairs; china hutch's; curved curio cabinet; floral sofa; sofa table; end tables; small tables; electric lift chair; display cabinets; cedar chests; full size bed; corner desk; storage cabinet; file cabinet; rocking chair; quilt rack; bar stools; 2 wood desks; dressers; chest of drawers; 2 electric twin beds; entertainment center; sewing machine in table; rocker recliner; wood shelves; Vizio 50" TV; Element 32" TV; glassware (pink depression, Fenton, ruby red, clear, etc.); Homer Laughlin china set; Christmas decor; Denon A/V receiver; Russ Sound speaker switch; Boston speakers; Sound Dynamics subwoofer; figurines; paintings; lamps; HP Pavilion computer; books, quilts; kitchen items; dishes; muffin pans; household items; silverware; utensils; pots/pans; mixing bowls; small kitchen appliances; office chair; fans; shop vacs; totes; storage bins; Norman Rockwell mugs; collectible small saucers/cups; fireplace tools; wood holder; bath chair; walker; wall decor; cleaning & laundry supplies; small Cleveland bench vise; hand tools; yard tools; ladders; poly shelves; trash cans; baskets; folding tables; card table; poly deck box; vintage Christmas items; park benches; porch swing; pelican statues & much more!



GUS GRUNDEN/MCCALL BROS AUCTIONS

417-627-2118 * 918-244-2299 * WWW.AUCTIONZIP.COM #38626

JOIN OUR FACEBOOK PAGE @GUS GRUNDEN-MCCALL BROS. AUCTIONS

GRUNDENMCCALLAUCTIONS.COM

Let us help you with all your advertising needs. Don't know what to say? Call us we can help! **417-624-4100.**

HAVE A PET OR PUPPIES TO SELL? Call us. You can even pay over the phone. **417-624-4100.**

Call us for all your advertising needs. **417-624-4100.**

NEED TO SELL YOUR HOUSE OR PROPERTY? Get the best coverage around. Call the Big Nickel and our helpful representatives will assist you in creating your ad. You can even pay over the phone. **Call 417-624-4100 for more information.**

ESTATE AUCTION

SATURDAY, MARCH 29TH, 2025 • STARTING AT 10:00 A.M.

LOCATED: 1934 9000 RD., OSWEGO, KS 67356

DIRECTIONS: From Bartlett, KS go north on Rooks Rd. to 9000 Rd. then east 1-1/8 miles to farm on north side of the road.

(Auction Signs Posted).

TS 190 70 Hp New Holland Tractor w/1,935 hrs. Carb w/Heat & Air; 2006 4 Door F-150 w/176,000 miles; 2011 Chevrolet Spark w/12,345 miles; 1971 S-10 Chevrolet w/73,420 original miles; 1964 Malibu On Blocks; Two Ton Feed Bin; Bale Spear on Tractor (Sold Separate); Hundred or so, 6 ft. Steel Post; Around (60) 5-1/2 ft. Steel Post All New; (5) Rolls New Barbwire; Ford Pickup Bed Trailer, Needs Floor; 6 ft. Brush Hog; Poulan Riding Mower; Several Old Push Mowers; Craftsman Rear Tine Tiller; (4) Poly Feed Bunks; Hay Rings Metal & Plastic; 500 Gallon Water Tank; 18 ft. Aluminum Extension Ladder; 12 ft. & 10 ft. Priefert Cattle Panels; Western Cocks; 1980 John Wright Cast Iron Muffin (Unusual); Iron Wheel Flower Stand; Old Cookie Jars; Manual Typewriter; Upright Piano; Keyboard; Ball & Claw Organ Stool; Acres of VCR Movies; Lots of Vinyl Records; Costume Jewelry; Wind Chimes; Maid of Honor Wash Tubs; Child's Wagon; Sewing Machine Base; Books; Electric Sewing Machine; Puzzles; Everyday Dishes, Pots, Pans & Etc.; Sewing Notions; Table w/Chairs; Handmade Quilts. There's way too much to try and list everything in this home!!!

ESTATE OF VERA HANIGAN

AUCTIONEER'S NOTE: Vera lived to be 93 years young and took care of everything pretty much by herself. She never threw anything away. This is a large two story home, every room is packed full. There are sure to be lots of surprises!

AUCTIONEERS

Cody Ross 417-529-4416

Bud Armstrong 918-541-8006

MOVING AUCTION

Saturday, March 29, beginning at 9:00 A.M.

Located at 2126 205th St, Fort Scott, KS 66701. From Fort Scott North on Hwy 69, 7 miles to Soldier Rd, at Hammond Exit left or West on Soldier Rd, 1 mile to 205th St, right go 2 miles to auction site. Watch for auction today signs.

FARM MACHINERY

No. 7 silage cutter, No. 37 IH hay baler small sq wire tie, 2-Big 4 JD hay mowers, 2-NH 56 hay rakes on steel, NH 55 hay rake on steel, Grain binder, corn binder (good condition), 8' tandem disc, 7' tandem disc, 12 ft. single disc, 8 ft. single disc, 6'x12' wagon on steel, 6' x14" hay wagon on steel, round bale mover on steel, JD 4-wheel spreader, steel floor and wheels, JD 2-wheel spreader w/steel floor and wheels, 7'x12' wagon steel bed with sides, 8'x 14' hay wagon, 3-Box wagons, New F and L forecart, Oliver single bottom plow, Case single bottom plow, 4-cyl. JD motor with clutch 90 hp, JD 2-bottom plow, MC field cultivator, 5-Wagon running gears, 2-Forecarts, 8' Grain drill (needs work), 2-Crop sprayers (need work), Harrow sections, Slip scoop with steel wheels, Flare side wagon, 5'x 8' 1 horse wagon on steel, 4'x 8' Trailer on rubber, 5'x 8' 1 horse wagon with springs rubber wheels, 6'x 12' Flatbed trailer on steel, Flare side wagon, Pickup bed trailer on steel (new floor), 2-40' grain elevators, 2-5'x 10' Box wagons, Lot of older horse drawn equipment for parts.

SHOP TOOLS & MISC. ITEMS

Grizzly table saw (good condition), Power trowel, 3-Pallet jacks, Brush saw, Log chains, 10-New 20' 6 bar continuous panel, Fuel tanks on stand, Scrap iron, Lot new & used step ladders various sizes, 4'x 10' Heavy duty welding table, Heavy duty warehouse shelving, Table saw and misc wooding equipment, Several chainsaws, 1-2 man chainsaw, Complete torch set with tanks, Big self-feeder, Lot-Small animal cages, Scaffolding, Come-a-longs, Approx. 1 ton new hardware: bolts, nuts, nails, screws, Large lot long handle tools, hay manure silage forks, silage, hoes, sledge hammers, etc., 3-Cattle squeeze chutes, Portable 2 ton creep feeder, Bale rings, 100+ steel posts, Wire, Gates, Panels, 14-12' corral panels on trailer, Water tanks, Lot 1 1/2" heavy steel pipe, 4-Saddles and misc. tack, Pressure washer, Ice tongs, Garden cultivators, Some antique items & toys, 3-New wheelbarrows, 12-Bench vises, Post vice.

HOUSEHOLD, BUGGY'S, MISC.

Open single buggy (road ready), Horse drawn gang lawn mower, 3 reel horse drawn mower, 5'x 12' boat on trailer, 3'x 10' boat, Runner sleds, 12' canoe, Chain link dog pens, 5 burner kerosene stove with baker, S.S. kettle 5 years old, DS. Circulator coal

stove used 1 year, New office chairs, 8'x16' Coyote Valley ice house new in 2020, Lot chairs, S.S. sink, Dressers, Beds, Cribs, Double wash tubs, 4-Wood stoves, File cabinets, Kitchen table and chair sets, 3-Roll top desks, China hutch, New 6' sink, Chest of drawers, 2-Singer sewing machines with stands, Maytag wringer washer, Lot dishes and cast iron pcs., Lot more furniture and small times, 40+ kerosene lamps, Gas irons, Lot pressure cookers, 40+ Coleman gas lanterns, Lot Coleman camp stoves, Jars, Ice cream freezers, Store shelving on casters, 20 qt ice cream freezer hit and miss motor, Grandfather clock, 7 key wind clocks, Heavy safe.

BUILDING MATERIALS

Large lot of lumber: 2x4-2x6-2x8-2x10-2x12-various lengths, Lot composite decking board, Lot treated 6x6 posts, Approx. 2,000 ft corrugated metal (used), Insulation, Approx. 3,000 ft reg rib metal used (good cond), Lot new reg rib metal various lengths and colors, New metal trim, Vinyl siding, 16-New 20 ft trusses.

GUNS

Henry lever action 22. cal (new) — 410 ga single shot, 410 ga. bolt action model M150B, Marline 22 cal, Marlin lever action 30-30 model 30AS (nice), Ted Williams lever action 30-30, Sears Roebuck Savage 30-30 bolt action 340B (rough), Glenfield model 60 22 cal, Remington 22 cal auto, Remington sportsman 12 auto 12 ga. full choke, Mossberg 30-06 bolt action, Henry 22 cal lever action (new), Mossberg 16 ga. bolt action (nice), Electra 12 ga double barrel Belgium, Savage 270 black syn stock, Victor special 12 ga single shot crescent arms (nice), Remington 270 semi-auto wood stock (nice).

LIVESTOCK

Approx. 50 Katadin & Katadin cross ewes, 1-Katadin ram & some lambs, 6 year old cross bred gelding broke, Misc. chickens, Rabbits.

This will be a large auction with 2 rings. Hope to be on livestock at 12:30 followed by machinery. Several wagon loads smalls and misc and likely some surprises. There will be something for everyone. Loader will be available auction day. Lunch by the Amish ladies. Hope to see you there.

Owners: David and Caroline Mullet

**Auctioneers
Larry Martin,
Loren Martin
& Mel Yoder**



MARTIN AUCTIONS
660-337-6471

Loren



*Larry and
the crew.*

For more auctions go to www.auctionzip.com ID # 47012

Terms: Cash or check with ID. Not responsible for accidents. Statements made day of auction take precedence over printed material

ESTATE & FARM AUCTION

SUNDAY, MARCH 30, 2025 - 12:00 NOON

LOCATION: 22 WILLIAMS DR. SOUTHWEST CITY, MO. 64863



**10% Buyers
Premium**

**TRACTOR/FARM • DOZERS/LOADERS
TRUCK/TRAILERS • SALVAGE
WOOD/WOOD WORKING EQUIPMENT**

ESTATE OF JIM EASTER

AUCTION NOTE: AFTER JIM'S PASSING, JENNETTE IS SELLING ALL ITEMS AND EQUIPMENT ANNOUNCEMENTS MADE DAY OF AUCTION, SUPERCEDES ANY PRINTED MATERIAL.

LIKE OUR FACEBOOK PAGE OR GO TO AUCTIONZIP.COM #27181 FOR PHOTOS AND MORE COMPLETE LISTING! YOUTUBE.



DWAYNE CRAIG AUCTION SERVICE

479-957-3965

Gravette, Arkansas
AALB #5



AUCTIONZIP.COM #27181

GUNS, AMMO, KNIVES & MORE



1

Mon-Sat 10am-6pm
530 W. Fir Rd
Carthage, MO 64836
417-358-5700
LTGUNSHOP.COM
GUNS-AMMO-SUPPLIES-CONCEALED CARRY TRAINING

2
GUNS & AMMO
BUY • SELL • TRADE
QUICK DRAW GUN
601 South Kyler, Monett MO • 417-354-8633

3

STEVE'S TRADING POST
• JOPLIN, MISSOURI •
4324 South Main
417-782-9600

4

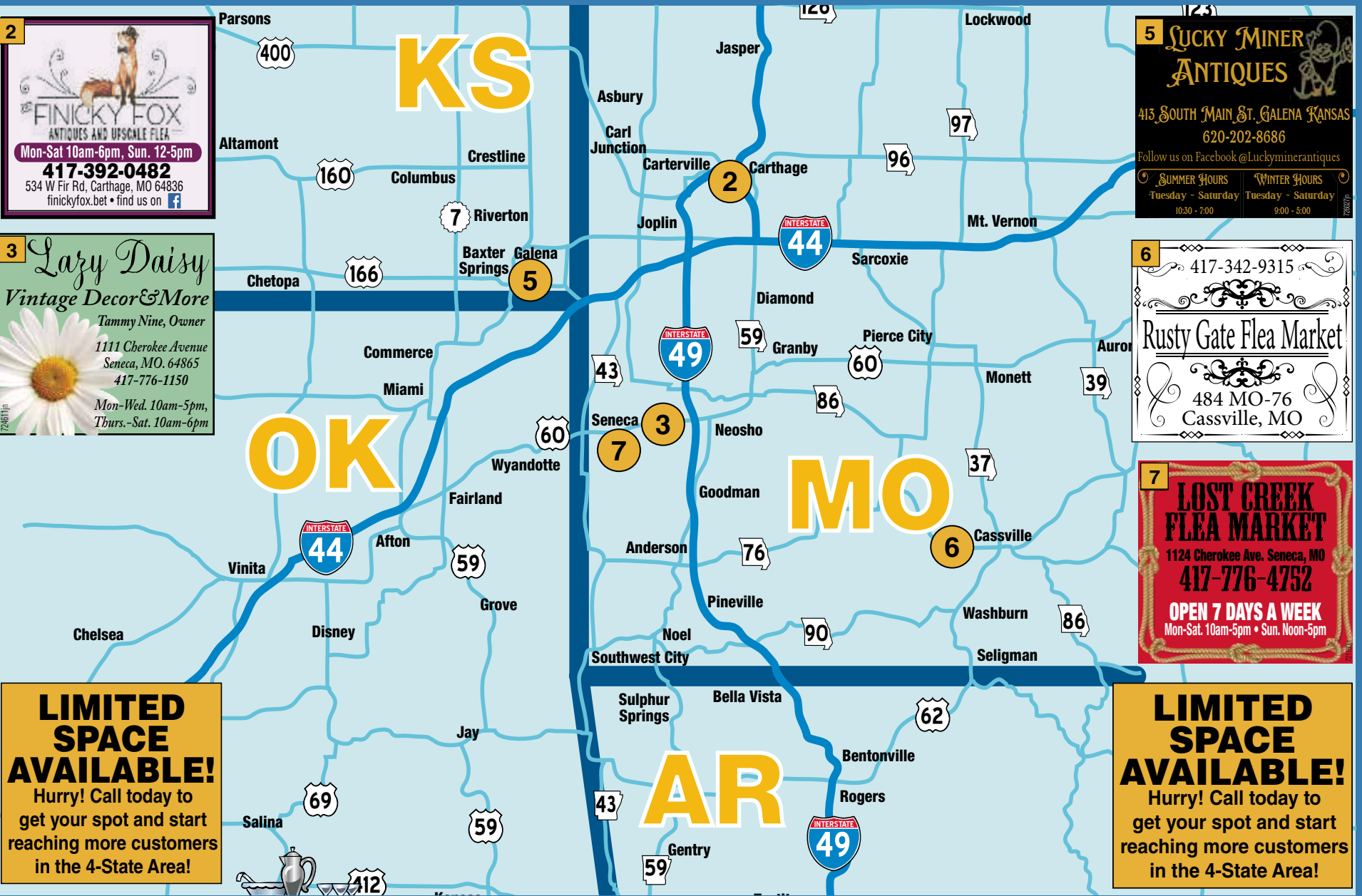
MAD MAN MOTOR GUN & PAWN
“..the right of the people to keep and bear arms shall not be infringed.”
401 WEST COLER
NEOSHO, MO 64850
417.355.2514

5

THE COMMAND BUNKER
MILITARY SURPLUS
1.5 MILES WEST OF INDIGO SKY CASINO
68950 US 60 • WYANDOTTE, OK 74370
918-666-3411

YOUR AD COULD BE HERE!
CALL 417-624-4100

Antique & Flea Market Directory



2

FINICKY FOX
ANTIQUES AND UPSCALE FLEA
Mon-Sat 10am-6pm, Sun. 12-5pm
417-392-0482
534 W Fir Rd, Carthage, MO 64836
finickyfox.net • find us on f

3

Lazy Daisy
Vintage Decor & More
Tammy Nine, Owner
1111 Cherokee Avenue
Seneca, MO. 64865
417-776-1150
Mon-Wed. 10am-5pm,
Thurs.-Sat. 10am-6pm

5

LUCKY MINER
ANTIQUES
413 SOUTH MAIN ST. GALENA KANSAS
620-202-8686
Follow us on Facebook @LuckyMinerAntiques
SUMMER HOURS
Tuesday - Saturday 10:30 - 7:00
WINTER HOURS
Tuesday - Saturday 9:00 - 5:00

6
417-342-9315

Rusty Gate Flea Market
484 MO-76
Cassville, MO

7

LOST CREEK
FLEA MARKET
1124 Cherokee Ave. Seneca, MO
417-776-4752
OPEN 7 DAYS A WEEK
Mon-Sat. 10am-5pm • Sun. Noon-5pm

LIMITED SPACE AVAILABLE!
Hurry! Call today to get your spot and start reaching more customers in the 4-State Area!

LIMITED SPACE AVAILABLE!
Hurry! Call today to get your spot and start reaching more customers in the 4-State Area!

Call Billie @ 417-624-4100

GARAGES & MORE

Licensed • Bonded • Insured

Servicing Missouri, Oklahoma, & Kansas



24x30x8

- **(2) 9x7 Overhead Doors**
- **(1) Entry Door**
- **4" Reinforced Concrete Floor**

only \$16,605*

****Travel and taxes may apply***
Price subject to change due to rising materials

30x50x10

- **(2) 10x9 Overhead Doors**
- **(1) Entry Door**
- **4" Reinforced Concrete Floor**

only \$26,480*

****Travel and taxes may apply***
Price subject to change due to rising materials cost.



- **29 Gauge Metal**
- **40 Year Paint**
- **22 Colors**
- **Engineered Trusses**
- **Treated Square Posts**
- **Reinforced Concrete Floor**
- **Double-Bubble Insulation Available**

www.garagesandmoreonline.com

Windows & doors can be added to these Packages.
We no longer build in ARKANSAS



Jonathan • 417-455-4633

Marcus • 417-455-3412