

CELEBRATING
OVER
40
YEARS



Established 1975

BIG NICKEL

THURSDAY,
DECEMBER 28, 2023

© Phillips Media Group, Inc. 2021. All Rights Reserved

1931 E. 20th, suite 103 • Joplin, MO 64804
417-624-4100

www.bignickel.com

Volume XLVII Issue 52

R6 RECYCLING
WE PAY CASH
for Scrap Metal

918-675-4118
620 North Park Circle
Commerce, OK 74339

SPECIAL PRICING
SAVE THOUSANDS



Q-CATCH 54 SERIES

ARROWQUIP



Q-CATCH 74 SERIES

BEST PRICES
GUARANTEED



GOBOB

America's Ranch Equipment

866-287-5504

GoBobBig.com

\$\$\$

BENTONVILLE GOLD & SILVER
3500 SW Regional Airport Blvd. Rd.
479-418-1904

is now paying cash for Gold, Silver, Collectible Coins and Jewelry all at fair market value. Also full time Jeweler on site will create, clean, or make like new, your jewelry.

Mon.-Fri. 9am-5:30pm
Sat. 9am-1pm

WANTED

BUYING JUNK CARS! We pay cash! No title needed. We pick up. Call/text 918-533-3437.

\$\$\$

CASH PAID for junk cars, trucks, or vans. Paying for small \$225 & up; Larger- up to \$600. Titles only. 7 days a week. Text us a picture of your car to 417-389-1333.

ATTENTION!

\$\$\$

Buying all **VEHICLES, TRACTORS,** Farm Equipment, Classic Cars and Trucks. Everything on property. "Call me before you sell!" 417-830-4685.

COMPANY COMING in for the Christmas Season?

We can accommodate your guests and family. **Big Shoal RV Country.** Joplin, MO.

Christmas Rates, 6 nights \$200. Beautiful peaceful park. 417-438-3003.

PAYING TOP Dollar for junk autos, small \$100/up, large up to \$300. No titles OK. 417-437-0605.

BE AN EARLY BIRD! Place your ads before Monday and beat the rush!

ESTATE/ MOVING SALES

NEED A SALE? Estate, Moving, Downsizing? Homes, Farms, Business, Furniture, Cars, Trucks, Tractors.

Just Get Organized
417-825-7003 Suzanne
Serving area 18 years.

Grumpy Grandpa HANDY MAN SERVICE
Insured and Bonded.
417-793-4078.



Want to BUY Junk cars and trucks! Paying top dollar! Also buying old signs, gas pumps, etc. You Call- We Haul! 417-438-1614.

Please print classified ads on The Big NICKEL website. Our web address is www.bignickel.com



JOPLIN, MISSOURI
midweststormshelters.net.
0% Financing

available to 12 months. ATSA CERTIFIED storm shelters. 10 year warranty. Picked up Concrete units starting at \$3100. Packages with installation starting at \$4250. Includes taxes and digging. Steel Safe Rooms starting at \$3755 +tax installed. Serving the entire 4-State area and beyond for 18 years. See us at 12423 Hwy. 59, Neosho MO 417-781-9718

NEED TO SELL YOUR HOUSE OR PROPERTY? Get the best coverage around. Call the Big Nickel and our helpful representatives will assist you in creating your ad. You can even pay over the phone. Call 417-624-4100.

TAX DEDUCTION SALE!
20% OFF RETAIL
GRAVELY PRO-TURN 260

- 60" Fab Deck (Limited Lifetime Warranty)
- 27HP Kawasaki
- FX850 V-Twin
- ZT5400 Transaxles
- 5YR-1250 HRS Warranty

RETAIL PRICE \$13,019
0% Financing for 48 mo. WAC
See Dealer for Details

Buy Now & Get Your TAX DEDUCTION!

GATEWAY FARM EQUIPMENT
9723 GATEWAY DRIVE • NEOSHO, MO
417-451-0821 • www.gfeneosho.com

GRAVELY

Celebrating 32 Years in Business!

Bathrooms
Polystone • Cultured Marble • Onyx

Polystone • Cultured Marble • Onyx
Showers, Bathtubs, Vanity Tops, Window Sills
CUSTOM MADE IN NEOSHO MISSOURI

NEOSHO MARBLE
Family Owned and Operated Since 1991

www.neoshomarble.com
SHOWROOM LOCATION
18414 Highway 59, Neosho, MO 64850 | 417-455-0470 | M-F 8:30 - 4:30

The Big Nickel is published every Thursday.
© Phillips Media Group 2021. All Rights Reserved

BIG NICKEL
1931 E. 20th, suite 103 • Joplin, MO 64802
417-624-4100 • Fax: 417-621-0287
EMAIL: classified@bignickel.com
www.bignickel.com

The publisher reserves the right to edit, classify, or reject any advertising copy. The Big Nickel assumes no financial responsibility for typographical errors in advertising or for omission on any advertisement further than the amount received for payment of such advertising in which the error occurred. Advertisers should check their advertising for accuracy when ad appears. The Big Nickel is not responsible for errors after the first insertion. One copy FREE per reader. Additional copies available only upon request. Payment by check authorizes The Big Nickel to electronically collect returned checks, plus \$25 service charge. Stopped or cancelled classified ads will receive an in house credit, good for 12 mos. No Cash/Credit Card Refunds! Copyright 2020. All rights reserved.

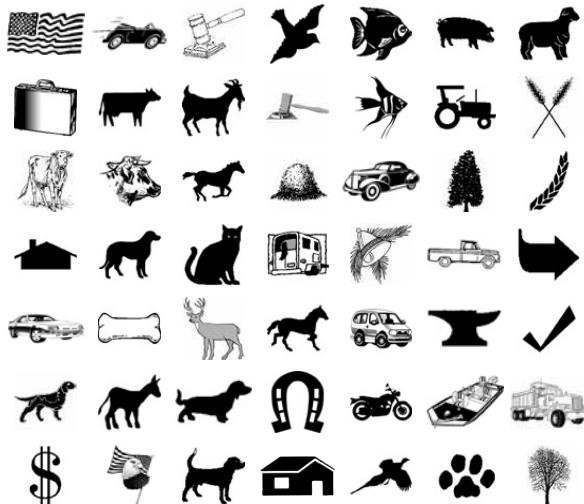
Big Nickel Classified Options

To place a classified Call 417-624-4100,
e-mail classified@bignickel.com

When you place a classified with the Big Nickel you have many options to enhance your classified and make it stand out above the others. Here are a few of the options available:

- Boxed \$2.00 • Bold & Capitalize [First 5 Words] \$2.00
- Graphic Options \$5.00 ea. • Super Graphic \$5.00
- Include Email address \$2.00 • Add a Picture \$5.00
- Include URL \$2.00 • 100% Reverse [Boxed/Boldcaps] \$5.00

Some of our Available Graphics



Available Classifications

A Section	
MERCHANDISE	passing
Miscellaneous MERCH	Notices
Free	Personals
Appliances	SERVICES
Arts & Crafts	Accounting-Services
Bargain Column	Air Conditioning/Heating
Building Supplies	Alterations & Sewing
Clothing	Appliance Repair
Computers/Accessories	Auto Repair
Electronics	Backhoe/Bulldozer
Furniture	Bush Hogging
Hobbies	Chat/Diri/Gravel
Jewelry	Child/Elderly Care-Ser-
Musical Instruments	vices
Office Equipment	Cleaning
Pawn & Thrift	Computer
Sports Equipment	Construction-Services
Wanted-Merchandise	Educational/Instruction
Pets & Supplies	Electrical/Plumbing-Ser-
Lawn & Garden	vices
Antiques & Collectibles	Funeral Needs
Flea Markets	Hauling / Moving
Wood & Accessories	Health/Beauty/Fitness
ANNOUNCEMENTS	Home Services
Community Events	Health Care
Thank You	Internet & Web Sites
Card of Thanks	Lawn/Garden/Landscape
In Memoriam	Legal Services
Lost & Found	Livestock-Services
New Businesses	Miscellaneous Services
No Hunting or Tres-	Music
	Painting
	Photography
B Section	Cattle
AGRI-BUSINESS	Farms & Acreage
Metal Buildings	Hay/Feed/Seed
Equipment & Supplies	Horses & Mules
	Livestock-AGRI
	Land/Pasture
	Farmers Market
	YARD SALES
	YS-Garage Sale
	Sales
	Seasonal
	Transportation/Driv-
	ers-EMP
	Welders
	Employment Online Only
	FINANCIAL
	Business Opportunities
	Insurance & Savings
	Investments
	Loans
	Services
	REAL ESTATE
	SALES
	Homes For Sale
	Mobile Homes For Sale
	Acreages & Lots-Sales
	Recreational For Sale
	Business Property
	Condos/Townhouses-Sales
	Foreclosures
	Homes For Sale By Owner
	Investment Property
	Other-RE Sales
	Wanted For Sale
	REAL ESTATE
	RENTALS
	Acreages & Lots-Rental
	Apartments
	Condos/Townhou-
	es-Rental
	Duplexes
	YS-Surrounding Counties
	AUCTIONS &
	ESTATE SALES
	Auction Sales
	Homes For Rent
	Mobile Homes For Rent
	Office/Commercial
	Rentals
	Other-RE Rental
	Recreational For Rent
	Roommates Wanted
	Wanted Rentals
	RECREATION
	Accessories-Recreation
	ATV's
	Boats & Motors
	Campers & Trailers
	Motorcycles
	Other-Recreation
	Parts & Services-Re-
	creation
	Wanted-Recreation
	TRANSPORTATION
	Automobiles
	Trucks, 4x4's, SUV'S
	Accessories-Transpor-
	tation
	Aircraft
	Antiques & Classics
	Commercial Vehicles
	Heavy Equipment
	Parts & Services-Trans-
	portatio
	Vans & Buses
	Wanted-Transportation

A Section Index

MERCHANDISE.....Page 02

Miscellaneous MERCH.....Page 02

ElectronicsPage 04

Pets & Supplies.....Page 04

Flea MarketsPage 06

Wood & Accessories.....Page 04

SERVICES.....Page 04

Construction-ServicesPage 04

Miscellaneous ServicesPage 05

Tree Service.....Page 04

REAL ESTATE SALES ... Page 07

Homes For SalePage 07

Mobile Homes For Sale.....Page 07

Acreages & Lots-SalesPage 07

Homes For Sale

By OwnerPage 07

Other-RE Sales.....Page 07

RECREATION.....Page 07

Campers & Trailers.....Page 07

MotorcyclesPage 08

TRANSPORTATION Page 08

AutomobilesPage 08

Trucks, 4x4's, SUV'S.....Page 08

Antiques & Classics.....Page 08

Heavy EquipmentPage 08

MERCHANDISE

Miscellaneous

AR-15, (3) clips, ammo, \$1000; 9mm Smith & Wesson pistol, \$600; Mossberg 410, \$300. 417-529-2188.

BEGINNER'S YOGA!
Twice a week:
Tuesday 9:15am
Wednesday 5:45pm

4 STATES YOGA is the place to start your Yoga Journey!

New Client Special...
(3) classes for \$30.
4statesyoga.com

CALLING ALL PARENTS!

YOGA is a simple way to engage and connect for the whole family! Ages 0-5. This class is going to be very laid back. Please bring a wear-carrier if preferred, maybe a few quieter toys, so children can join, or play on mat next to you. Mama and daddy getting stretch and self care time. Please reach out with any concerns or questions!

Thursday, 10am,
starting Jan. 2024
501 S. Wall St.
Joplin, MO 64801

Please visit
4statesyoga.com
to secure your spot.

COMPANY COMING in for the Christmas Season?

We can accomodate your guests and family.
Big Shoal RV Country.
Joplin, MO.
Christmas Rates,
6 nights \$200.
Beautiful peaceful park.
417-438-3003.

CUSTOM WIDE plank T&G flooring, paneling, oak trailer floor, barn and corral lumber, custom sawing, also, have bundles of slab.

Chapman Sawmill
417-451-0072
417-438-5507

Offering Quality Service to the 4-State Area!



FRONTIER SEAMLESS GUTTERING

Laramie Miller, Mgr.

918-791-4271 • millerlaramie@gmail.com

GOT OLD BATTERIES LYING AROUND? TURN THEM INTO CASH!

Lead acid vehicle batteries

CALL FOR PRICING!

CASH FOR BATTERIES



Rogers, AR • 479-631-2346
Joplin, MO • 417-624-2421
Golden, MO • 417-271-3801
Springfield, MO • 417-889-5245

Battery Outfitters
YOUR NEIGHBORHOOD BATTERY STORE

FAIRVIEW DISCOUNT

Groceries and More

Mon, Tue, Wed, Fri..... 8AM -5PM

Saturday..... 9AM-3PM

Closed Thursday & Sunday



Amos Yoder
31536 Palm Rd.
Fairview, MO
417-536-8133

Miscellaneous

ELECTRIC WHEELCHAIR, \$400; Electric Scooter, \$700.

DR. GARY HAMLIN,
417-437-5317.

FILL SAND, Arena, Pipe and Tank Liner. Sand Specials this winter.
417-438-3003

LESPEDEZA SEED, cleaned and bagged.
417-540-7845 or
417-394-2671.

WANTED

NEED A Handyman, part-time as needed, Noel, MO. 417-475-6350.

Viagra users, 30 day guarantee. Why pay more, (40) 100 milligram tablets, \$169. Call 1-800-607-2519, open everyday.

Miscellaneous

MID AMERICA COINS

is now paying cash for Gold, Silver, Collectible Coins all at fair market value.

918-787-2646
9 E. 3rd St.
Grove, OK 74344
Tues-Fri. 10am-4:30pm
Sat. 10am-2pm.

NEW BEIGE work shop, 12x24, wired and has overhead & side door, setting on blocks, \$7000. 50 E. Main, Peoria, OK. 918-533-2707 Fred.



PROFESSIONAL
4 foot M&M floor display on wheels, \$300. Pick up only, Nixa. 667-657-1432 call/text.

BIG NICKEL ads sell! Call for more information and specials. 417-624-4100

The Ten Commandments

I. Thou shalt not have strange Gods before me

II. Thou shall not take the name of the Lord thy God in vain

III. Remember to keep holy the Lord's day

IV. Honour thy father and thy mother

V. Thou shalt not kill



VI. Thou shalt not commit adultery

VII. Thou shalt not steal

VIII. Thou shalt not bear false witness against thy neighbour

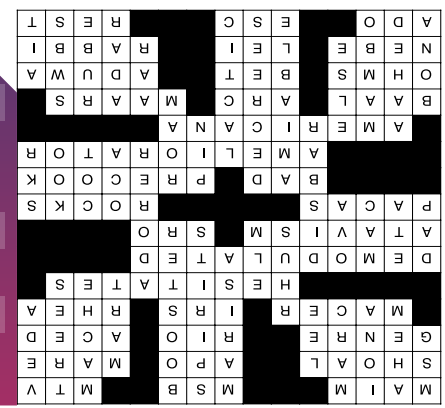
IX. Thou shalt not covet thy neighbour's wife

X. Thou shalt not covet thy neighbour's goods

BIG NICKEL BRAIN GAMES

-CROSSWORD- PUZZLE

- DECEMBER - WEEK 4



CRYPTO FUN

Determine the code to reveal the answer!

- Solve the code to discover words related to winter. Each number corresponds to a letter. (Hint: 13 = I)
- A. 7 12 13 22 22 11 5 9
Clue: Big snow storm
 - B. 21 16 13 12 12 18
Clue: A bit cold
 - C. 9 5 13 24 6
Clue: Pile of snow
 - D. 25 3 10 14
Clue: Frozen precipitation

WORD SCRAMBLE

Rearrange the letters to spell something pertaining to winter.

ACTSO

			5					
	2			7	8			
	5		8	6			4	
	6			1		3		
7			4	8	5	1		
6	3			4				9
		9					7	
1				3		8		

Fun By The Numbers
Like puzzles? Then you'll love sudoku. This mind-bending puzzle will have you hooked from the moment you square off, so sharpen your pencil and put your sudoku savvy to the test!

Here's How It Works:
Sudoku puzzles are formatted as a 9x9 grid, broken down into nine 3x3 boxes. To solve a sudoku, the numbers 1 through 9 must fill each row, column and box. Each number can appear only once in each row, column and box. You can figure out the order in which the numbers will appear by using the numeric clues already provided in the boxes. The more numbers you name, the easier it gets to solve the puzzle!

-PUZZLE- SODOKU

- DECEMBER - WEEK 4

4	8	6	3	7	9	5	1	2
3	7	5	2	1	6	8	4	9
6	9	8	4	8	2	1	9	8
9	8	7	3	7	6	8	4	9
6	9	8	4	8	2	1	9	8
5	4	4	7	1	2	3	9	8
8	8	8	3	9	6	9	4	5
1	2	8	3	9	6	9	4	5
3	5	1	8	6	9	9	7	4
2	2	1	3	7	8	6	5	9
8	7	6	2	5	4	9	3	1

ANSWER:

WINTER WONDERS WORD SEARCH

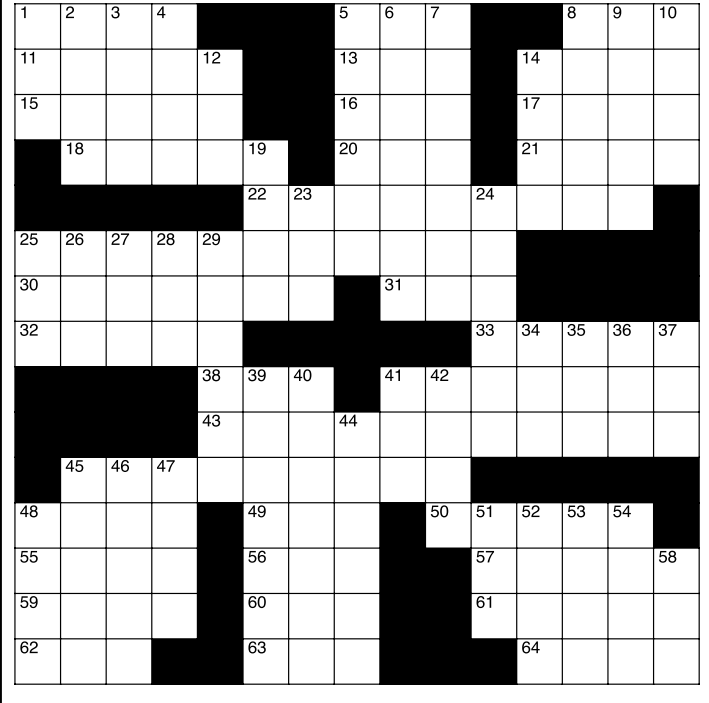
W O B U O G P E O B H U I O A W E N G S
 Z P Z L A L N T C B L V M Y Z Z A R D P R N E
 L E A V T W T R C A V M Z Z F A W Z N E
 A K I R E T V T Z H Z A F Z M O N P O T
 E N U I S N H E A V Y Y U F O L K E G T I
 Z S I C K T V L A B R F I D O Y A H W N M
 N N L E I K Y H W T B L B O M E A H W N M
 M O R S I I G R N Z Y U U B B R Y K R Z
 T W U K N B Z I S R R N U A E Z W R Z
 E M D A G D W T E N T N E A R P S N E Z
 N A B T U G F P I A D L I U D R U B T M
 E N G I S K P N I L O W T O E V N Y S Y
 C Y D N B L I G N E O F A W D G E P I A R
 K Z E G U V Z W P R N L M Z A I V E T
 D B L S V A B H O E H D U O C U Z W R O I
 A T S L H Z A D P I O B N R E C D V K O I
 Y F L T Y Z B M L O G F E P A Y K S N L
 O P P U A S E L G H M I U Z T F W I F T
 S C A R F T P K R B L A N K E T P R V M
 H U D P G V A K R A P C F D Y K E B L F

WORDS

- BLANKET
- BLIZZARD
- BRISK
- BUNDLE
- DOWNHILL
- FROZEN
- HAZARD
- HEAVY
- ICECAP
- ICE SKATING
- LAKE
- MITTENS
- MOUNTAIN
- NOR'EASTER
- PARKA
- SCARF
- SKIING
- SLED
- SLIPPERY
- SNOWMAN
- TEMPERATURE
- WINTRY
- WOODBURNING
- WOOLEN

-WORD- SEARCH

- DECEMBER - WEEK 4



HARDWOOD PRATER PRODUCTS
EST. 1903

6 GENERATIONS SINCE 1903
918-919-9764

WE ARE BUYING

STANDING TIMBER and CUT LOGS!

PAYING GREAT PRICES on WALNUT, CEDAR, WHITE OAK, And many other species!

BUDGET BOX

MOBILE STORAGE

417-782-7788

www.bbcontainer.com



Dry, Secure, & Rodent Tight!!

5745 Hwy 43, Joplin, MO
(1 1/4 mi south of Petro on Hwy 43)

Storage Container Sales & Modifications



Construction-Services

ROCKING B

CONSTRUCTION & RESTORATION
Specializing in residential remodels and new development. Call for free estimates.
417-952-7397

CRAIG'S DRYWALL REPAIR
Do you have cracks in your ceilings or walls?

- Can Repair
- Popcorn removal
- Retexturing
- Loose tape joints
- Ceiling stains
- Mold removal.

Same day, same service. Insured, Free Estimates. Joplin/Springfield area for over 40 years.
417-430-9544.

RCL SERVICES

All Plumbing needs; Power Washing; Gutter Cleaning; Window Cleaning; Yard Cleanup; Mowing; Painting; Concrete Work. Free Estimates
417-292-7215.

SOUTHWEST CONTRACTORS

YOUR LOCAL metal roofing contractor. Various colors available. Free estimates. General construction.
417-434-3266.

CONCRETE WORK

Message for a free estimate. Driveways, sidewalks, slabs, pole barns. Benny's Concrete
417-389-0160.

NEED SOMETHING? Let us help you. You can advertise that you are looking for a special item. Call 417-624-4100 for more information.

Miscellaneous

REGISTERED PUPPIES. Yellow Labrador Retrievers, \$175; Teddy Bears (Shih-Tzu/Bichon) \$300. Shots, deworming. 417-775-2346.

SOUTHWEST CONTRACTORS
YOUR LOCAL metal roofing contractor. Various colors available. Free estimates. General construction.
417-434-3266.

COMMAND BUNKER
MILITARY SURPLUS
THE COMMAND BUNKER Military Surplus. Outdoor Gear/ Clothing; MRE's; Flags; Collectibles; Survival Gear. 68950 Hwy. 60, Wyandotte, OK, 918-666-3411. Airsoft/ Paintball & Tactical Training Coming Soon!

Wood & Accessories

BUYING ALL types of standing timber.
LARGE or SMALL Tracts
Nick Bradford
417-451-0820
417-825-4653

JOSH HARTNESS LOGGING

BUYING MOST SPECIES OF STANDING TIMBER



620-212-0896

MARKETS ARE GOOD ON BURR OAK, ASH & WALNUT
FREE ESTIMATES • 25 YEARS EXPERIENCE

D&D LOGGING
BUYING ALL TYPES OF STANDING TIMBER
Walnut • Oak
Ash • Etc.
Anthony Gruver
417-437-9633

Wood & Accessories

CLINT RENNER LOGGING
Specializing in Walnut, oak and ash. Guaranteed bids, will pile brush, top prices paid. Don't sell too cheap! Honest, Reputable, 3rd generation logger. Call today for free estimate. 417-439-7954.

Electronics

ELECTRIC WHEELCHAIR, \$400; Electric Scooter, \$700.
DR. GARY HAMLIN,
417-437-5317.

CHESHIRE LOGGING

BUYING STANDING TIMBER

- Specializing in Walnut •
- Top Prices Paid •

References Available
BRENNON CHESHIRE
417-540-0421

HARDWOOD PRATER PRODUCTS

EST. 1903

6 GENERATIONS SINCE 1903
Buying standing timber and cut logs. Great prices on walnut, ash, white oak, and many other species.
Call 918-919-9764

Pets & Supplies

(7) SHEPA-DOODLE PUPPIES, 10 weeks old. Shots and wormed. Very friendly and adorable! Parents are registered German Shepherd and registered Standard Poodle. Just in time for Christmas! \$100. Call/text 417-205-0626.

AKC ENGLISH MASTIFF PUPS. Ready for forever home 12-19-23. Call or text 417-830-8553.

AKC GERMAN Shepherd puppies, \$950 full registration, \$700 pet registration, shots/ wormed. **READY NOW!** 479-313-3202.

AKC REGISTERED German Shepherd Puppies. Shots, wormed, microchipped and certificates. Ready around Dec. 15th. (2) white males, (1) white female, (3) black/tan males. ONLY \$300! 918-676-5378.

MINIATURE SCHNAUZER PUPPIES, (3) females, (1) male. Shots, wormed. 918-261-2056 or 918-219-5696.

Pets & Supplies

Hava-Poo puppies, ready to go. UTD shots and deworming. Pictures available. 620-236-3131 leave message.

LONGHAIR CHIHUAHUA PUPPIES, 6 weeks old, eating well, wormed, will need shots later. Females \$500, males \$400 each. Black, white and brown. 620-429-5253. Message for pictures.

MICRO, TOY and MINI GOLDEN DOODLE PUPPIES; Cavapoo puppies; Beagle/terrier, under 10lbs, male and females; Jack Russell puppy, will be small. All vaccinations and wormed for age. Manx kittens. 417-880-0227. Call for pics.

PERSIAN KITTENS waiting for their forever homes! Call/text Darla at 402-216-7119. Pittsburg KS area. Can send pics.

RAT TERRIERS, \$200/up; Chihuahuas, \$400, shots and wormed. 479-238-5034.

YORKSHIRE TERRIER puppies, 5 weeks, ready by Christmas. Females \$700, males \$600. 918-961-2825.

PLEASE PLACE your classified ads on The Big NICKEL website. Our web address is www.bignickel.com

Pets & Supplies

REGISTERED MINI Aussie puppies with pedigrees, 13 weeks, health papers, shots, \$300 - \$700. 620-404-9356.

REGISTERED PUPPIES. Yellow Labrador Retrievers, \$175; Teddy Bears (Shih-Tzu/Bichon) \$300. Shots, deworming. 417-775-2346.

REGISTERED ROTTWEILER spayed female, 6 months, pick of litter! Rabies, Parvo shots, wormed, \$1000. Great companion! **Registered Border Collie pups,** black/white, 7 weeks Dec. 31. Only \$200! 620-778-4966 or 620-778-8684.

DO YOU have a service you provide? Run in the Service Directory. Call Grace at 417-624-4100.

SERVICES

Tree Service

BUYING STANDING Timber. Top prices paid. Full residential service available. Call Josh St. Clair. 417-626-2120.

H&M CONSTRUCTION

Cell: 417-262-2340 • Home: 417-682-4060

ALL TYPES RESIDENTIAL & COMMERCIAL BUILDINGS

Pole Barns • Shop Buildings • Horse Barns
Cattle Facilities • Shouse Buildings • Garages
Also Available in Red Iron Structures

YOU DREAM IT, WE BUILD IT!

31+ years experience Free Estimates


The - Shetler's JJ BUILDERS & EXCAVATING

Family owned and operated. Also Buyer of Standing Timber

Specializing In

Pole Barns, Houses, Horse Barns, Garages,
New Roofs: Metal or Shingle. All kinds of Concrete Work
Water Drainage, Landscaping, Building Sites,
Driveways & Much More!
Quality work at a lower price





John and Caroline Shetler
1185 Rt. E, Lockwood, MO
Call or text 417-205-8780



SERVICE DIRECTORY

To Advertise your service or business in this special section

\$40⁰⁰
A Month

Call Grace: 417-624-4100

ASPHALT SEAL COATING

3S ASPHALT CONSTRUCTION
• Seal Chip • Asphalt Paving
• Baserock-machine laid
417-317-7448 or 417-297-8362

CONCRETE

4-STATES CONCRETE
Concrete flatwork includes shop floors, driveways, patios, decorative, infloor heat, stem, basement & retaining walls.
LEROY YODER
620-762-0132 or 620-238-7180.

CONSTRUCTION & HOME IMP.

**GRUMPY GRANDPA
HANDY MAN SERVICE**
Insured and Bonded.
417-793-4078

**PROFESSIONAL FLOOR LEVELING,
AND JOIST REPLACEMENT.**
Licensed, Bonded, Insured.
417-439-5717 • 417-438-0864

D&M CONSTRUCTION & REMODELING, LLC.
Specializing in doors, windows, & siding, all types of carpentry. Metal roofing. Room additions. Licensed, Bonded & Insured.
417-483-4113

PROFESSIONAL REMODELING & BUILDING.
Garages, Shops, Room Additions, Bathroom Add-Ons.
Prices to fit your pocketbook!
Licensed, Bonded, Insured.
417-439-5717 • 417-438-0864

SUNBURST SERVICES HANDY MAN
Repairs, Carpentry, Drywall, Doors, Installs, Plumbing, Painting, Pick Lists, Fixes, Electrical, Windows, Honey-do's, Do Overs, and more. Small Jobs Welcome. 417-324-4073.

KB FENCE AND FARM SERVICES
Residential and Agricultural
Fence Installation and Repairs.
Land Clearing, Remodeling, Skid Steer, Flat work, Pole Barns, Outbuildings.
Licensed and Insured, Experienced and ready.
620-719-9019

ELECTRICIAN

WILCO ELECTRIC, LLC.
Residential Construction and Service Work.
Free Estimates. Call or text any time
417-629-4740

ESTATE SALES

**JUST GET ORGANIZED!
SERVICES WE OFFER!**
*Organize, set-up, and hold sales. *Downsizing
*Moving *Estate (Residential & Commercial) homes and small and medium farms.
*Clean up property. *Haul off unwanted items.
*Help prepare home/property for sale.
*Advise on staging home for sale. *Pack for moves.
*Buying gold and silver (jewelry, flatware, coins)
Serving the area for 15 years.
Large following of buyers to our sales.
Just Get Organized! Free Estimates.
Suzanne 417-825-7003

EXCAVATING

DUMP TRUCK Services, black dirt, creek rock, Skid steer work, Land clearing, Bush Hogging, Pads & Driveways.
Donnie 417-291-8916.

TICE EXCAVATION LLC
Prep for water/sewer lines, Land prep for buildings, roads, Land Clearing, Brush Removal, Ponds
Seneca, MO
417-592-4636 • Tim Tice- owner

FENCING

KB FENCE AND FARM SERVICES
Residential and Agricultural
Fence Installation and Repairs.
Land Clearing, Remodeling, Skid Steer, Flat work, Pole Barns, Outbuildings.
Licensed and Insured, Experienced and ready.
620-719-9019

HAULING

HAUL AWAY SERVICES
Junk; Rubbish; Furniture; Appliances; Debris; Garage/Yard items.
JUST GET ORGANIZED!
417-825-7003
Serving 4 State Area for 15 years.

LAND CLEARING

Reclaim overgrown pastures, fence lines.
Brush hauling available.
Call or text Paul 417-312-5117

KB FENCE AND FARM SERVICES
Residential and Agricultural
Fence Installation and Repairs.
Land Clearing, Remodeling, Skid Steer, Flat work, Pole Barns, Outbuildings.
Licensed and Insured, Experienced and ready.
620-719-9019

LAWN & GARDEN

**FIRE PITS, OUTDOOR KITCHENS & PATIOS,
AERATION, HYDRO-SEEDING & SODDING.**
Irrigation, installation, & repair.
Retaining walls, sandstone patios & flowerbeds.
Full service lawn, landscape and lawn care.
Free Estimates. Licensed, Bonded & Insured.
R&D LAWN CARE & LANDSCAPING
417-438-6590

UPTOWN LAWN HYDROSEEDING
Free Estimates. Commercial, Residential.
All types of grass seed. 479-903-6236

ORGANIZING

TOO MUCH STUFF?
We Buy Most Anything. Estates/full or partial. Appliances; furniture; patio; outdoor items; tools; jewelry, gold, silver items;
(We also do Estate Sales).
JUST GET ORGANIZED
417-825-7003 Suzanne

PAINTING

**INTERIOR DECORATORS
ROB & CATHY FEATHER**
Husband & Wife Team • 20+ Years Experience
•Custom Painting; Wallpaper Install & Removal; Faux Finishes; Wood Graining; Murals & Art Designs; Home Repairs; Kitchen & Bath Cabinets; & Antiques Redone.
WE WORK WITH YOUR BUDGET!
479-212-3200.
CALL or TEXT For your FREE Estimate & Color Consultation! All Work Guaranteed!

PLUMBING & SEPTIC

ALL PURPOSE PLUMBING
Installing septic tanks and repairs. All of your plumbing needs.
417-235-5511.

DUGGAR'S SEPTIC TANK PUMPING
"A Flush Beats a Full House"
417-451-2806 or 417-529-8826
Missouri only
Call anytime, also weekends and holidays.

ROOFING

**RESIDENTIAL & COMMERCIAL METAL
ROOFING & REROOFING.**
Regular rib or standing seam. (Hidden fasteners). 40 year warranty. (22) colors. Satisfaction guaranteed! Servicing the 4-State Area! Free Estimates!
YODER CUSTOM CONSTRUCTION, LLC.
417-388-0613

MONTY'S ROOFING & CONSTRUCTION
Residential: •Roofing •Siding •Gutters
•Storm Damage •Construction
Commercial: •Roofing •Metal •Flat
•Bituman Coatings. Over 30 years experience, Workers' Compensation
30 Year Leak/Labor Warranty
Free Estimates, Insurance Claims, Special Discounts
Licensed, Bonded, Insured
www.montysroofing.com
417-438-0895

STUMP REMOVAL

TREE STUMP removal, fast, efficient, affordable. Free estimate. 417-623-5510,
TERRY VREELAND

TREE SERVICE

PACIFIC TREE SERVICE
Owner: David Bratt
417-622-7963
*Licensed *Bonded * Insured
All Bids are Completely Free
Tree Trimming & Removal. Brush Cleanup.
All jobs big and small. We can handle them all!

**PLACE YOUR
AD TODAY!**

**JUST \$40
A MONTH**

PLACE YOUR AD TODAY!
SPACE IS LIMITED AND GOING FAST! DON'T MISS OUT!
Call Grace: 417-624-4100



BAR-M SKIDSTEER SERVICE
 Pasture Clearing-Tree Cutting, Grapple work, Brush-hogging, Dirt Work, Demolition, Pond Cleaning, etc.
 918-919-1384.

ATTENTION!
 \$\$\$
 BUYING Classic antique cars and trucks. Running or not. Also gas pumps, tractors, farm equipment, old signs, and running newer vehicles. I pay cash up to \$1000/up. I buy one or all on property. Honest, trustworthy, and fair.
 Call ME! 417-234-5154.

EICHER & SON
 Will do Add-ons, Remodeling, Decks, Retaining walls.
 40 years experience. Call us for your construction needs.
 918-541-5421.

A&B
CDL COURSES
 CLASS A CDL Entry Level Driver Training. Brink Engineering dba A&B CDL Courses now offering FMCSA Approved training in Verona, MO! Get your CDL in 4 days for only \$2000! Call today! 417-737-0897.

OK NATIVE PECANS CO.
 Crack-Shell-Buy-Sell PECANS.
 Open Nov.-Mar. Monday-Friday 8:30am-5pm, 801 Pine St. North Miami, OK Call 918-541-1440.

POULTRY HOUSE REMOVAL
 We buy good quality chicken and turkey houses. Remove the houses and all deconstruction debris. Local professional crews. Serving since 1992.
Cedar Creek Contractors, LLC 785-217-3379.
 CALL ABOUT our classified ad specials. 417-624-4100.

~ The Most Decisive Factor ~

The church is the most decisive factor here on earth in world affairs, and only can the church participate in spiritual conflicts with spiritual forces that influence the affairs of a nation. God has made Christians His agency to engage in this spiritual battle. Ephesians 6 says; "For we don't wrestle against flesh and blood..." although that's who Satan uses because we are really fighting against powers of wickedness in spiritual realms.

Christians are God's personal representatives to fight the darkness, and God has provided Christians His arsenal of spiritual weapons. The scriptures say in 2 Corinthians 10 that the Christians' weapons of warfare are not material but mighty through God, able to pull down strongholds, bringing down everything that exalts itself against the knowledge of God bringing everything into captivity to the obedience of Jesus Christ.

The greatest powerhouse in a Christian's weaponry is prayer, and it is the first to use. A Christian can accomplish anything in prayer. Jesus said in Mark 10 that with God, all things are possible to those who believe.

Through faith in God's word, Christians have the ability over the efforts of flesh because all power belongs to God alone, and only those have access to this power that are followers of Jesus.



Mark Taylor is the President of Sky High Broadcasting, as well as an author, columnist and speaker. You can contact him at mtaylor@kneo.org, or follow him on Twitter @kneo917

KNEO
 RADIO THAT IMPACTS YOUR FUTURE **91.7**

Listen Live at
kneo.org

417-451-KNEO (5636)
 10827 Hwy 86 East, Neosho, MO 64850

CELEBRATING OUR 10TH YEAR IN BUSINESS!
WANT TO BUY MILITARY ITEMS
 USA or FOREIGN * SINGLE PIECES OR COLLECTIONS
 Medals - Helmets - Patches - Uniforms - Knives
 Bayonets - Buying from WW I - Iraq/Afghanistan
Military Collectors Services
 126 N. Webb • Webb City, MO • 417-850-0011
marionliles@yahoo.com

NEED SOMETHING? Let us help you. You can advertise that you are looking for a special item.
 Call 417-624-4100 for more information.

BIG NICKEL ads sell! Call for more information and specials. 417-624-4100
 Have Clutter? Need room? Call the Big Nickel classifieds. We can help! 417-624-4100.

HAVING A garage sale or rummage sale? Call us for special pricing. 417-624-4100.
BE AN EARLY BIRD! Place your ads before Monday and beat the rush!

ADVERTISE YOUR Flea Market or Antique Store in the Antique & Flea Market Directory. Call Billie for more information and special pricing.
 417-624-4100.

Antique & Flea Market Directory

1 THE HITCH N' POST
www.thehitch-n-post.com
 David L. Mason
 401 Commerce Ave. Commerce, OK
 918-675-4519
 Over 400 Booths & Show Cases
 Hours: Monday-Saturday 10am - 5:30pm
 Gone To Church on Sundays
 76,000 sq. ft. • Largest on Route 66

2 Pitiful to Posh
 110 W. Broadway, Monett, MO
 Tues • Sat 10-5, Sun 1-5
417-236-5664
 Boutique, Antiques, Collectibles,
 Repurposed Vintage Furniture

3 THE FINICKY FOX
 ANTIQUES AND UPSCALE FLEA
 Mon-Sat 10am-6pm, Sun. 12-5pm
417-392-0482
 534 W Fir Rd, Carthage, MO 64836
finickyfox.net • find us on

4 Saviors of Rust Flea Market
 Open Wednesday-Sunday, 10am-6pm
 Hwy 59/421 Maple, Chetopa KS
620-432-1770
 Like us on Facebook

5 Somewhere in Time
 ANTIQUE MALL
 719 W. Walnut • Rogers, AR
 * Located in the old Shelby Lane Mall *
 Admission 479-636-0474
 Open: Mon-Frid 10-5 • Thurs-Sat 10-4 • Sun 12-5
[@tt.net](mailto:somewhereintime.com)

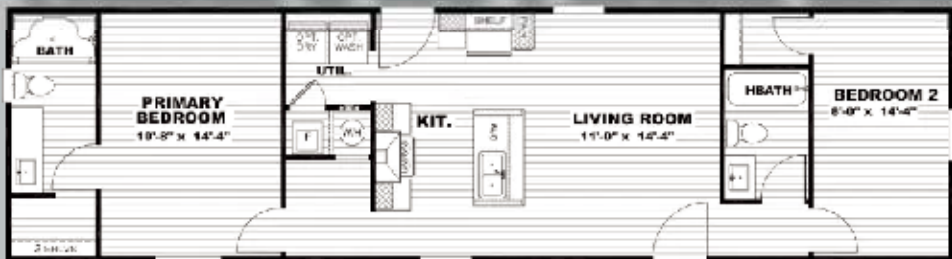
6 Rusty Gate Flea Market
 417-342-9315
 484 MO-76
 Cassville, MO

7 Wishing Wells FLEA MARKET
417-847-7056
 704 West St. (on square) • Cassville, MO, 65625

LIMITED SPACE AVAILABLE!
 Hurry! Call today to get your spot and start reaching more customers in the 4-State Area!

Call Billie @ 417-624-4100

THERE'S NO PLACE LIKE A NEW HOME!



NEW 16' WIDE 2 BEDROOM, 2 BATH

CHOICE OF CABINETS AVAILABLE

STARTING AT \$59,900

BE THE FIRST TO OWN THIS BRAND NEW MODEL!



At I-49, Exit 27 (Loves), 1 Mile East on Hwy. 86, Neosho, MO

877-582-6767 • 417-451-6767

www.claytonhomesofneosho.com

M-F • 9am-6pm | Sat • 9am-5pm

Mobile Homes For Sale

WE need MOBILE HOMES!
PAYING CASH TODAY!
ALL YEARS, ALL SIZES.
CALL 417-455-0200.

Acres & Lots-Sales



BY OWNER
***3 bedroom, 2 bath house, 3 car garage with well on 1 acre, \$260,000; also additional land available at \$4600 per acre. Aurora, MO/ Jenkins Jct./ Crane, MO area.**

***28 acres + canoe resort on Elk River, with RVs and cabins, Noel, MO.**

***4000+ sq.ft. warehouse, brick, Noel, MO. On railroad spur and loading dock, high ceiling.**

***25 acres + gravel stock pile, Pineville, MO. Limestone rock, all sizes of rock, over million tons.**

***21 acres + great for RV, boat storage, BBQ restaurant, Dollar General, ETC. Great income potential. Located on the MO/AR line, 9300 sq.ft. bldg.**

***16+ approximately 6 acres commercial property on new 49/71 Freeway. Lower half could be small farm, has large warehouse, workshop, and doublewide on the creek. Anderson, MO.**

***13.3 acre+ with (4) 40x400 buildings in good shape, good well and electric, great views for homesite, great for growing vegetables, raising birds, small herd of cattle, etc. Exeter, MO.**

Owner may carry with reasonable down payment!
602-999-3899 or 800-333-9110.

Miscellaneous

ROLL-OFF CONTAINERS FOR REMODELING, ROOFING, CLEAN UP. Pittsburg, Joplin and surrounding areas.
Freddy Van's, Inc.
620-231-1127.

STORAGE UNITS, TWO SIZES OPEN, RV/BOAT PARKING ALSO AVAILABLE, IN NEOSHO, MO. (NEAR LOVE'S TRUCK STOP.) FOR PRICES AND SIZES, VISIT 86ministorage.com or call 417-621-1601.

SW MO BEEKEEPERS OF NEOSHO, Tuesday, Jan. 2nd, 7pm. Neosho High School Ag building. New members welcome. For more info call/text 479-644-1167.

REAL ESTATE SALES

Homes For Sale

AURORA- 3 bedroom, 1 bath frame house (1132 SF) with central heat; on corner lot. \$5900 down, \$957 per month. Owner finance 800-720-8503.

Homes For Sale

CARTHAGE- 2-1/2 acres, 3 bedroom, 2 bath modular home, has central heat/air, 10'x12' storage building. AS IS. \$5400 down, \$971 per month. Owner finance 800-720-8503.

CHECK OUT THIS COTTAGE IN JOPLIN! 2 bedroom, 1 bath frame house, 950 SF, central heat/air and small shed, \$6900 down, \$1079 per month. Owner finance 800-720-8503.

FAIRVIEW- 4 bedroom, 2 bath, 2-story frame house with central heat/air, 1-car detached garage; \$5900 down, \$999 per month. Owner finance 800-720-8503.

GOODMAN- 2 bedroom, 1 bath frame house, 1-car garage, new electric wiring and plumbing Nov. 2023, \$6100 down, \$999 per month. Owner finance 800-720-8503.

JOPLIN- 3 bedroom, 1 bath frame house on corner lot! \$4900 down, \$834 per month. Owner finance 800-720-8503.

Homes For Sale

LISTING: (12.75) acres, Newton Co near Joplin. Large home with two living spaces and two shops with heat/air, perfect for a large family and a small business. Call Tony Chrisco at Whitetail Properties Real Estate LLC 417-860-0259.

MOVE-IN READY! 3 bedroom, 1 bath frame house, central heat/air, 1 car detached carport, small building. Joplin, \$5900 down, \$957 per month. Owner finance 800-720-8503.

NEAR DOWNSTREAM CASINO in OK- 2-1/3 acres, 3 bedroom, 2 bath mobile; has central heat/air, live creek! \$6900 down, \$1079 per month. Owner finance 800-720-8503.

NEED ACREAGE? 1-2/3 acres with 3 bedroom, 2 bath mobile. Has central heat/air, dishwasher, 12'x24' outbuilding. Anderson, \$4900 down, \$746 per month. AS IS. Owner finance 800-720-8503.

NOEL- 2-1/4 acres, 3 bedroom, 1 bath historic 2-story home with storage building. AS IS, \$3900 down, \$667 per month. Owner finance 800-720-8503.

NOEL- 3 bedroom, 1 bath frame house with attached carport, basement; has new electrical and plumbing! \$5400 down, \$915 per month. Owner finance 800-720-8503.

WEBB CITY- 3 bedroom, 1-1/2 bath frame house with central heat/air, fireplace and new metal roof in 2022. \$4900 down, \$921 per month. Owner finance 800-720-8503.

Homes For Sale

PINEVILLE- 5 bedroom, 1-1/2 bath, large back porch, central heat/air, on large lot, (2) large out-buildings. AS IS, \$7400 DOWN, \$1338 per month. Owner finance 800-720-8503.

SARCOXIE- 3 bedroom, 1 bath frame house, 1356 SF, central gas heat/air, 1 car detached garage, storm cellar, new metal roof, \$3900 down, \$667 per month. AS IS. Owner finance 800-720-8503.

Mobile Homes For Sale

FINANCING AVAILABLE. Get in a home before Christmas! Ready to go! 16x80 Clayton, 3 bedrooms, 2 baths, nice home! Beautiful kitchen cabinets, vinyl kitchen flooring. Ask us about financing options. Free delivery for the first 50 miles. Come by today! #31. 18101 Linden Dr., Neosho, MO. 417-451-2609.

4 BEDROOM, 2 BATH. Financing options available. For most all credit scores. Extra living space, spacious kitchen with a kitchen island, # 48. 417-451-2609.

Mobile Homes For Sale

AS-IS/CASH ONLY HOME, 3 bedrooms, 2 baths, very unique floor plan, 2x6 walls, tape and texture, porcelain sinks and a fireplace. Manufactured home, no financing, cash offer only, \$52,900 plus the delivery fee. #16. www.hwy59discounthomes.com 417-451-2609.

2020 SOUTHERN, 2020 Southern Energy, 28x72, 4 bedrooms, 2 baths. Extra living area! Will be open and available soon! No rent to own but financing options available, #50. 417-451-2609.

2 BEDROOM, 2 BATH, 14x70 single-wide. Ready for it's new owners! Kitchen appliances, A/C, cozy little home. Free delivery for first 50 miles. Have this home before Christmas! #27. 417-451-2609.

FOR SALE SOLD Older 14x70 mobile home, needs work, needs moved, \$1000. Located 3 miles east of Monett on Business 60. 417-xxx-xxx.

Acres & Lots-Sales

Town & Country

Real Estate & Auction Service
1700 W. Austin, Nevada • **417-667-2966**

- **40 ACRES M/L, 29 tillable, remainder woods . \$238,000**
- **12 ACRES, about 3 miles west of Erwin, Mo. Row crop, pasture and a pond. Septic, rural water and electric on site \$70,800**
- **244 Acres of Pasture in Vernon County Mo. fenced and cross-fenced . Access on 2 sides, 4 nice ponds will furnish plenty of water..... \$976,000**
- **21 ACRES, M/L Tillable ground currently in beans south of Lamar on 30th Rd \$157,500**
- **80 ACRES Pasture, SOLD AT AUCTION...\$5,200 PER ACRE**
- **54.9 Acres, Row Crop SOLD AT AUCTION...\$7,100 PER ACRE**
- **205 Acres, west of Lamar, MO Barton County SOLD AT AUCTION... \$7400 PER ACRE**
- **314 Acres SOLD at Auction 5-20-23 \$1,554,300**
- **440 Acres, Vernon County, MO SOLD \$2,200,000**
- **160 Acres \$4,400 per acre, Jasper County, MO SOLD**
- **118 Acres, \$4,600 per acre, Jasper County, MO..... SOLD**
- **440 Acres, Vernon County Mo..SOLD AT AUCTION..\$1,910,000**
- **1480 Acres, Vernon County Mo....SOLD\$7,000,000**
- **120 Acres, Row Crop, Vernon County Mo SOLD \$660,000**

WE ARE "SOLD OUT" & NEED LISTINGS! PLEASE CALL, IF YOU ARE THINKING OF SELLING! 417-488-9540



DOUG WORTMAN 417-488-9540 Owner/Broker/Auctioneer
JAY WORTMAN 417-365-4721 Agent
TROY SCOTTEN 417-448-7183 Agent
TAYLOR SCOTTEN 417-684-1224 Agent
COLE ABELE 417-684-9881 Auctioneer

Clayton Joplin homes
Joplin Super Center
"Largest Selection of Energy Smart Homes in the 4-State Area!"
Energy Smart Homes Will Save You \$\$\$
BEST HOMES • BEST PRICES
Customer Experience is our #1 Goal
Buy from the Proven Best!
5609 East 7th St. • Joplin, MO
417-553-9780
www.ClaytonHomesJoplin.com

Homes For Sale By Owner

HAVE QUESTIONS ABOUT LAND VALUE? WE HAVE ANSWERS

WHITETAIL PROPERTIES.COM

TONY CHRISCO
SOUTHWEST MISSOURI
417.860.0259
tony.chrisco@whitetailproperties.com

2023 BEST BROKERAGES

Whitetail Properties Real Estate, LLC DBA Whitetail Properties, DBA Whitetail Properties Real Estate. In the States of Nebraska & North Dakota DBA Whitetail Trophy Properties Real Estate LLC. In Ohio, DBA Whitetail Properties Ranch & Farm Auctions. Licensed in CO, MN, SD, TN & WI - Jeffrey Evans, Broker. Licensed in FL, KS & MO - Jeffrey Kirk Gilbert, Broker. Licensed in TX & NM - Jerey Bellington, Broker. Licensed in IN - Dan Bates, Broker. Licensed in AL, GA, LA, & MS - Sybil Stewart, Broker. Licensed in TN - Tim Bunette, Broker. Licensed in TN & MS - Josh Moak, Broker. Licensed in AR - Anthony Chrisco, Broker. Licensed in NE, SD, IA - Chip Camp, Broker. Licensed in IA, NC - Richard F. Daugh, Broker. Licensed in MI - Edmund John Nagaski, Broker. Licensed in IL, MD, WV - Debbie S. Lane, Broker. Licensed in ID, MT, OR, UT, WA, WY & NV - Aaron Mikson, Broker. Licensed in W - John Meyer, Real Estate Broker. Licensed in DC - Owen Anderson, Broker. Licensed in KY, MS & NH - Derek Fisher, Broker. Licensed in OH - Jeremy Schaefer, Principal Broker. Licensed in NE & SD - Jason Schendel, Broker. Licensed in MS - Chipper Gibbs, Broker. Licensed in PA - Jack Brown, Broker.

RECREATION

Campers & Trailers

GRAND COUNTRY Lake-side RV Park. Daily, weekly, monthly, annual. Adult park (over 55). On Grand Lake. Space available. 918-257-1959.

Motorcycles

NIGHTWIND CYCLES
1004 Walnut, Lamar, MO.
Reasonable rates.
Motorcycle inspection station.
BIG SALE ON ROADKILL T-SHIRTS-\$5 EACH!
Now have full line of biker apparel and gear!
Also Billiard supplies!
Year round gift certificates.
Now accepting credit cards.
Call for appointment
417-682-3733.

TRANSPORTATION

Trucks, 4x4's, SUV's

2013 FORD Explorer, luxury, \$6900; 2009 Ford F-150, runs good, everything works, \$5900. 417-529-2188.

WWW.BIGNICKEL.COM

TRANSPORTATION

Antiques & Classics

1953 FORD CRESTLINE VICTORIA, 2 door hardtop, completely redone inside/out. AC/power steering. Call for details and photos. 918-801-3389.

Heavy Equipment



EQUIPMENT UNLIMITED, INC
TRUCKS & SALES

WE BUY AND SELL:
Dozers; backhoes; skid-steers; dump trucks; bucket trucks; semis; trailers of all sizes; forklifts; various quick attachments.
Call Robert 918-801-3269.

NEED TO SELL YOUR HOUSE OR PROPERTY? Get the best coverage around. Call the Big Nickel and our helpful representatives will assist you in creating your ad. You can even pay over the phone.
Call 417-624-4100.



FIND THE
PERFECT PIECE
FOR THE
PERFECT PRICE

*Find the stuff you want.
Sell the stuff you don't.
Save time and money with
the newspaper classifieds!*

2012 CHEVY SILVERADO 1500 EXT CAB 143.5" LTZ 4WD

5.3L V8, 4WD
LEATHER,
REMOTE IGNITION,
TOW HITCH RECEIVER,
ONLY 201K MILES,
LOTS OF EXTRAS!
SEE OUR WEBSITE
FOR MORE PICTS!



Only \$9,995

Burr Motor Co.
639 W. Coler, Neosho, MO
417-451-1029
www.burrmotorcompany.com

ASK THE
MOTORMEDICS®
Automotive Advice from the Under The Hood® Show



Dear Motor Medics,
We purchased a two-year-old Ford Truck that has the flex fuel option. I've never owned a flex fuel vehicle so I read the owner's manual and at your suggestion went to fueleconomy.gov to get an idea of what kind of mileage it should get. They claim about five mpg more than what we are getting. The truck was a lease vehicle and has about 70,000 miles which seems high for two years, but they say it was taken care of. What can we do to improve the fuel economy? 10mpg on the highway for most of the time using e85 seems very low. Your answers are always appreciated.

Thank you,
Darren in Lemmon SD

Dear Darren,
Driving the truck primarily on the highway and assuming it's in perfect tune, you are not carrying extra weight, and you are using e85 ethanol fuel, it should be about right. With 70,000 miles on the truck, even though they claim it has been well taken care of it likely has not had much work done in the way of tuning. It's two years old, it just doesn't happen much. Without a fuel system cleaning you can lose a couple mpg and using e85 will take much more. Being flex fuel you can use a blend. If available, try 30% and check the mileage. That percentage has resulted in an increase for many of our customers with flex fuel vehicles over e85 or nothing.

Take care,
the Motor Medics

Dear Motor Medics,
I'm thinking of buying a Saturn Vue. It's got some miles but is a very nice vehicle. There's only one thing that's keeping me from it and that's because they're no longer in business. This holds true for other companies as well, but they were bigger. If I buy this thing and I need to have it worked on, will they be able to find parts for it? It's a great deal but not if I must park it because I can't fix it.
What do you guys think?

Thank you,
Todd in Yankton, SD

Dear Todd,
Yes Saturn is gone but this vehicle shares many of the common drivetrain parts with other vehicles and the aftermarket makes many commonly used parts for popular vehicles, so you don't have to rely solely on the manufacturer. For most unique parts like body and interior that are still available you would purchase them through a GM store. Many companies that are still in business today have discontinued less popular parts to save money and they can be tricky to find. Popularity commonly drives what is available. We have found ourselves looking for parts on a three-year-old vehicle that is out of warranty and at times just could not come up with a new part. In most cases we were able to find a good used part as an option and get the customer going and save them some money as well.

Take care,
the Motor Medics

FOR ENTERTAINMENT ONLY • Always consult your local shop and follow all safety procedures before repairs.

Come visit the Motor Medics® online @ underthehoodshow.com

Branson
TRACTORS

YEAR-END CLEARANCE BLOWOUT SALE

TYM
TRACTORS

**6 Year Limited
Warranty**

**Financing
Available**

BRANSON 2505H & Belly Mower



25HP, 4WD,
W/LOADER,
HST TRANS,
1000 LBS LOADER
LIFT CAPACITY,
60" BELLY MOWER

\$16,900

BRANSON 2505H & BACKHOE



25 HP, 4WD, W/LOADER,
HST TRANS, 1000LBS LOADER
LIFT CAPACITY, & BACKHOE

\$21,900

BRANSON 3515H

35HP, 4WD, W/LOADER, Hydrostat Trans, 2200 lbs
loader lift capacity, 3022 lbs tractor weight only.



\$23,900

BRANSON 2610H & BACKHOE

25 HP, 4WD, W/LOADER, HST TRANS,
1375 LBS LOADER LIFT CAPACITY,
& BACKHOE



\$24,900

TYM 574 SHUTTLE

55P, 4WD, W/LOADER,
SHUTTLE SHIFT
TRANS, 1 SET REMOTES
2800 LBS LOADER LIFT
CAPACITY



\$27,900

TYM 574 HST

55HP, 4WD, W/LOADER,
HST TRANS,
1 SET REMOTES,
2800 LBS LOADER LIFT
CAPACITY



\$28,900

BRANSON 5520 CAB

55 HP, 4WD, W/Loader, Cab w/H&A,
16x16 Shuttle Shift Trans, 2 sets Remotes,
2700 lb. Loader Lift Capacity,
4200 lbs. Tractor Weight



\$33,900

TYM 654 CAB

65HP, 4WD, W/LOADER,
CAB W/H&A, 12X12
SHUTTLE SHIFT TRANS,
2 SETS REMOTES, 3100 LBS
LOADER LIFT CAPACITY



\$38,900

Tatum Motor Company

FARM TOOLS SINCE 1889

931 N. BUS. HWY. 71
ANDERSON, MO
417-845-3563
HOURS M-F 8-5 • SAT 8-NOON

1033 W. HENRI DE TONTI BLVD
(412 WEST), TONTITOWN, ARK
479-361-9488
HOURS M-F 8-5 • SAT 8-NOON

SALES

SERVICE

PARTS

CAS STEEL

METAL BUILDING SUPPLIES



METAL CULVERTS

- **23 STEEL ROOFING COLORS** plus 18 Textured Colors
- **VINYL SIDING**
- **GARAGE DOORS**
- **TRIM**
- **BUILDING KITS** Steel or Wood

LIFETIME WARRANTY

www.cassteelneosho.com
18027 E. Hwy. 86 • Neosho, MO
 (5 Miles East of Walmart on 59 Hwy. • Old 60 & 71 Alt.)
Toll Free 855-455-2526 or 417-455-2525
 Mon-Fri • 7:30-5:00



American Made Metal Roofing

40 year warranty.....\$2.65

Building In A Box Stud Wall & Pole Barn Kits 40 Year Warranty	29 Gauge 10 year\$2.45
24x30x8.....\$5,400	29 Gauge #1 Galvalume \$1.95
30x40x10.....\$8,700	26 Gauge Galvalume\$2.40
40x60x12.....\$16,800	26 Gauge 40 year\$3.25

417-553-8697

PORTABLE BUILDINGS

REDUCED METAL PRICING



202 S. Prigmor Joplin, MO. 417-553-8697

BRB BUILT RITE BUILDINGS

1110 W. Harmony Neosho, MO
417-632-4675
www.builtritebuilding.com

- 2x6 Nailers
- Trusses 4' On Center
- Patented Concrete Pier Options Available
- Free Estimates
- McElroy Metal (40 Year Warranty)

BUILT-RITE POST FRAME BUILDINGS

- Shops • Garages • Machine Sheds
- Cattle Facilities • Homes
- Horse Barns • Riding Arenas



Serving The Area For Over 35 Years. Locally Owned & Operated.

Licensed 25 Years Exp. Insured

JONES BUILDING SYSTEMS

www.jonesbuildingsystems.com
 Office 479-644-6336 • Fax 479-657-6701

Metal Buildings
 Mini Storage
 Metal Roofing
 Site Work and Concrete

★ No Dirt, Tax or Delivery Included Yet ★

RED IRON
 Installed Includes Slab
 100x125x16
 Insulated
 Incl. 4 O/H &
 4 W/I Doors
CALL FOR PRICE

Call about
 Mini Storage
 Buildings

RED IRON HAY BARN
 40x75x16 Installed
 Roof only w/piers
\$35,654

RED IRON HAY BARN
 Installed
 64x75, Roof only
 w/piers
\$50,568

★ Commercial & Residential★ Heavy Built All American Steel★

BIG NICKEL

B Section Index

AGRI-BUSINESS..Page 02

Metal Buildings.....Page 02

Equipment & Supplies.....Page 03

Cattle.....Page 07

Hay/Feed/SeedPage 07

Livestock-AGRIPage 07

AUCTIONS & ESTATE SALES.....Page 07

Auction Sales.....Page 07

AES-Surrounding Counties.....Page 11

NEW YEAR'S SPECIALS! • BOOK NOW! • NEW YEAR'S SPECIALS! • BOOK NOW! • NEW YEAR'S SPECIALS! • BOOK NOW!

GARAGES & MORE

Licensed • Bonded • Insured
 Servicing Missouri, Oklahoma, & Kansas



30x40x10

- (2) 10x9 Overhead Doors
- (1) Entry Door
- 4" Reinforced Concrete Floor

Only \$25,830*

*Travel and taxes may apply
Price subject to change due to rising materials cost.



30x30x9

- (2) 9x8 Overhead Doors
- (1) Entry Door
- 4" Reinforced Concrete Floor

Only \$19,395*

*Travel and taxes may apply
Price subject to change due to rising materials cost.

- 29 Gauge Metal
- 40 Year Paint
- 22 Colors
- Engineered Trusses
- Treated Square Posts
- Reinforced Concrete Floor
- Double-Bubble Insulation Available

www.garagesandmoreonline.com

Windows & doors can be added to these Packages.
 We no longer build in ARKANSAS

Jonathan • 417-455-4633 **Marcus • 417-455-3412**


NEW YEAR'S SPECIALS! • BOOK NOW! • NEW YEAR'S SPECIALS! • BOOK NOW! • NEW YEAR'S SPECIALS! • BOOK NOW!

SUPERIOR METALS SALES INC.

METALS SALES INC.COM
 Metal Building Supplies & Components

Commercial • Agriculture • Shop Buildings
 Custom I-Beam Buildings w/26 ga.
 40 Year Warranty on all Prime Steel Panels

HAY BARN 40x75x16
 Roof Only • Materials
CALL FOR PRICING DUE TO RISING COST OF STEEL
 All American Steel. Install Available.




- 29 Gauge 40 Year, Painted, Warranty.
- 19 Colors Available.

Steel Pricing Fluctuation. Please Call for Quotes
Call For Mini-Storage Quotes

Toll Free 1-888-364-9527
 Office 1-417-671-8015
 Fax 417-671-8018
 Hours: Mon-Fri 8am-5pm
12760 St. Hwy. 76 • Cassville, MO 65625
sales@superiormetalsalesinc.com

Free Estimates



BIG NICKEL DEADLINES

CLASSIFIED LINE AD DEADLINES

AUCTIONS 10am • Mon.	A SECTION 3pm • Mon.
B SECTION 10am • Mon.	VEH SECTION 3pm • Mon.

DISPLAY AD DEADLINES

AUCTIONS Noon • Wed.	A SECTION Noon • Thurs.
B SECTION Noon • Thurs.	VEH SECTION Noon • Thurs.



MAKE A SPLASH

without wasting cash

Small ads produce big results.
 Ask about our advertising rates to fit any budget.

15 WORDS \$11.75 - CALL THE BIG NICKEL TODAY AT 417-624-4100!!

QUALITY POST FRAME CONSTRUCTION LLC



POLE BUILDINGS • GARAGES • GENERAL CONSTRUCTION
 QUALITY WORKMANSHIP • METAL ROOFING
 FREE ESTIMATES!


WILLARD KNEPP 918-533-2637
 FAIRLAND, OK • NO SUNDAY CALLS, PLEASE

Equipment & Supplies

SECTION 179 Tax Deduction

Don't forget new cattle equipment qualifies for 100% tax deduction!

Call GoBob to Learn More

GOBOB
 America's Ranch Equipment
CALL NOW
 855-880-7961 
 BigGoBob.com

JOPLIN TRUSS
 ENGINEERED QUALITY CONSTRUCTION
 2 LOCATIONS TO SERVE YOU:

Stark City, MO
 417-472-6800

Hwy. 96 - Avilla, MO
 417-246-5215

IDEAL STRUCTURES LLP

Specializing in Pole Buildings, Garages, Shops, and General Construction

Marion Sommers **PHONE:** (479) 335-6230
EMAIL: MarionSommers69@gmail.com
 Hindsville, AR 72738

NEED TO SELL YOUR HOUSE OR PROPERTY? Get the best coverage around. Call the Big Nickel and our helpful representatives will assist you in creating your ad. You can even pay over the phone. Call 417-624-4100.



HEAVY EQUIPMENT RENTALS
 Day, Week, or Month

96 RENTAL
 5714 Lawrence 1010
 La Russell, MO
 417-366-5577
 www.96rental.com

KIOTI Since **John's Tractor Works & Equipment Inc. 1985**
 YOUR AGRI. DIESEL SERVICE SPECIALIST

Mon-Fri 8am-5pm
 Sat 8am-Noon
 3 miles East of Vinita, OK on Hwy 60
 Serving the 4 State Area for over 35 years
918-256-5774

CK 40 HP

FALL SALES EVENT
\$750 OFF

ALL CS, CX, CK SERIES MODELS
0% UP TO 84 FINANCING* MONTHS

OR

UP TO \$3100 CASH BACK* (T-L-B)

FREE LOADER

with the purchase of a select KIOTI CK model* | 11/23 - 11/30

6 YEAR UNLIMITED HOUR POWERTRAIN WARRANTY

ORANGE BLACK FRIDAY SALE

KIOTI

RX SERIES 66-73 HP



KIOTI

1.99% UP TO 72 FINANCING* MONTHS

OR

UP TO \$6500 CASH BACK* (T-L-B)

DK 40-58 HP



KIOTI

ALL DK/DK SE SERIES MODELS
0% UP TO 72 FINANCING* MONTHS

OR

FREE LOADER

W.R.C.

TL SERIES 74 HP



KIOTI

0% UP TO 36 FINANCING* MONTHS W.R.C.



WALT'S TRACTOR - SERVING YOU FOR OVER 56 YEARS - WALT'S TRACTOR - SIMPLY THE BEST FOR LESS - WALT'S TRACTOR

Get More with **LS Tractor!!**
 Excell In Your Field™

Because you want to work your land, not on your tractor. Continuing more than 30 years of excellent value, performance, and exceptional customer satisfaction established by our founding company LG, we are so confident in the quality of our tractors, we back each one with our 6 year limited warranty.



IN STOCK SALE

Zero Down / 84mos (WAC*) Free Loader

LS Tractor
 Excell In Your Field™
 More Tractor, More Value, More Satisfaction

Since 1967

Walt's Tractor LLC
417.472.7200
 12 Miles East of Neosho on Hwy. 86

56 Years

7 YEAR INDUSTRY LEADING WARRANTY

BIGDOG MOWER CO.
 MADE IN THE USA

SUPER SALE!
 Mowers starting at **\$2,995*** (*cash price)

- Alpha 42
- Alpha 52
- Alpha MP48
- Alpha MP54
- Alpha MP54
- Alpha MPX54

(Mower shown is with optional LED lights)

www.waltstractorsales.com
 Where Service is Always in Season!



The World's #1 Selling Farm Tractor!

LAMBERT

Tractor & Machinery Sales, L.L.C.

The Largest Mahindra Dealer in Kansas!

8001 S.E. Hwy 66, Galena, KS

www.lamberttractor.com

620-783-1895

We are Open. Curbside Service Available



NO DPF FILTER TO SERVICE OR REPLACE SAVES YOU TIME AND MONEY NO DOWNTIME NEEDED FOR REGENERATION

7 YEAR
LIMITED POWERTRAIN
WARRANTY

• SALES • PARTS • RENTAL • SERVICE •



0% for 60Mon

Mahindra 6075 Cab power shuttle, 71HP 4wd self leveling loader

\$737.00/MO

\$0 Down, 84 Month Financing Available W.A.C.



0% for 60Mon

Mahindra 1635 HST, 35hp, quick attach loader & bucket, 4x4...

\$367/MO

\$0 Down, 84 Month Financing Available W.A.C.



0% for 60Mon

Mahindra 1635 Shuttle, 35hp, 4x4, w/loader

\$352/MO

\$0 Down, 84 Month Financing Available W.A.C.



0% for 60Mon

Mahindra 5155 shuttle, 55hp. 4wd w/loader

\$496/MO

\$0 Down, 84 Month Financing Available W.A.C.



0% for 60Mon

Mahindra 1626 Shuttle, 26hp, 4x4, w/loader

\$314/MO

\$0 Down, 84 Month Financing Available W.A.C.



TRIMMER SET
FSA 57

STIHL Battery Powered Trimmers
STARTING AT
\$199⁹⁹

STIHL BGA57 SET
\$20.00 OFF

With AK 10 battery and AL 101 charger

STIHL

*MS 2114/59 HSP. Offer valid for a limited time only at participating dealers while supplies last.

BUSH HOG
Performance You Can Count On™

Bushhog 1815, 15' cutter, Flexwing, F&R chains,**\$21,400.00**

Bush Hog 2215. 15' cutter, Flexwing, F&R Chains**\$23,625.00**

Bush Hog BH216 6ft. cutter F&R chains **\$4,150.00**

HUSTLER
ZERO-TURN MOWERS

0% FOR 48 MONTHS
financing available (WAC)

\$250.00 OFF in stock machines only

STIHL

STIHL BG50 Blower's
STARTING AT
\$149⁹⁹

LAMBERT TRACTOR
620.783.1895

CHAIN SAWS
STARTING AT
\$199⁹⁹

STIHL

CHAIN SAW CHAIN SPECIALS!

LAMBERT TRACTOR 620.783.1895

USED Equipment

- 2013 Mahindra 6110 Cab, 60HP, 4WD with loader, 475 hrs..... **\$24,500.00**
- 1995 John Deere 770 tractor, 2701 hours, 23 hp, loader, 5' agri 5' cutter **\$10,500.00**
- Used Zero Turn Mowers.....**Starting at \$2,250.00**
- Used 3-point implements**starting at \$550.00**
- 2022 Bad Boy 3026 Tractor, 26hp, HST, 4wd, Loader, 69hrs **\$18,900.00**

See Full Line Of Used Equipment & Implements At
lamberttractor.com

PRECISION EXCAVATING

Building Pads - Ponds - Concrete
Septics - Roads & Driveways
Land Clearing Demolition
& much more

Matthew Zimmerman
Wyandotte, OK
918-961-2183


*Customer Satisfaction
Is Our Goal!*




YOUR AUTHORIZED GOOSENECK™ DEALER

FRYE FARMS
The #1 Dealer in
Missouri for Gooseneck Sales
\$s in 2004-2022.
Reason: PRICE!

Trade In's
Welcome!



FRYE FARMS TRAILERS

Seneca, MO • 417-438-0146

Equipment & Supplies

DO YOU LIKE YOUR PICKUP, SUV, OR CAR? HAVING ENGINE TROUBLE? **DON'T TRADE!**

WINTER IS COMING!

Get your vehicle prepped for
WINTER DRIVING

DYN-A-TECH

ENGINE REBUILDERS

WILL REMOVE, REBUILD & RE-INSTALL **\$2,995*** STARTING AT
less external parts *Price varies by engine type and size

GET 'ER DONE!

Let Dyn-A-Tech put new life into your vehicle with a re-manufactured engine!

ASK ABOUT OUR \$300 REMOVE & REBUILD DISCOUNT THROUGH DECEMBER!

DYN-A-TECH

ENGINE REBUILDERS **620-783-5041** IN THE SAME LOCATION FOR 36 YEARS
(6 Miles West of Joplin on 7th St.)
724 W. 7th • Galena, KS




SPACE AVAILABLE

Ask about our out-of-this-world advertising rates that fit any budget!

GUNS, AMMO, KNIVES & MORE



1 **LIBERTY FREE**
Mon-Sat 10am-6pm
530 W. Fir Rd
Carthage, MO 64836
417-358-5700
LTGUNSHOP.COM
GUNS-AMMO-SUPPLIES-CONCEALED CARRY TRAINING

THE COIN COLLECTOR
Dave Sorrick, Mindenmines, MO
SILVER-GOLD-COIN ESTATES
2 620-423-6600
www.bordertownauctionhouse.com

3 GUNS & AMMO
BUY • SELL • TRADE
QUICK DRAW GUN
601 South Kyler, Monett MO • 417-354-8833

4 STEVE'S TRADING POST
JOPLIN, MISSOURI
4324 South Main
417-782-9600

5 MAD MAN MOTOR GUN & PAWN
"..the right of the people to keep and bear arms shall not be infringed."
401 WEST COLER NEOSHO, MO 64850 **417.355.2514**

YOUR AD COULD BE HERE! CALL 417-624-4100

INTERSTATE POLE BUILDINGS



• Commercial • Mini Storage • Garages • Horse Barns • Shops • Agriculture
 Darrell Knapp • Sarcoxie, MO
 417-437-1452 • interstate.buildings@privategarden.org

NO SUNDAY CALLS, PLEASE

SPECIAL FINANCING OPTIONS

0% Financing Available on ALL NEW MODELS
 (with approved credit)

ATTN: FARM BUREAU MEMBERS
 Ask about our Farm Bureau Rebates
 On ALL MODELS!!



NewCo Service
 11989 Homer Lane
 Neosho, MO
 417-451-2660

Call Jeremy for Pick up & Delivery Options

• CUSTOM BEEF PROCESSING
 • DEER PROCESSING
 • SCHEDULING FOR HOG


LOWEST PRICES ANYWHERE!!
 65 CENTS per lb / Hanging Weight

9479 Gateway Dr.
 Neosho, Mo
 417-208-2808




Gateway Meat Co.
 www.gatewaymeatco.com

Equipment & Supplies



BUHLER ALLIED 895 loader, older but with very low use, has good hoses and comes with 8' bucket and brackets for JD tractor, \$5000; 12' 7 shank deep ripper, \$500; 6' Pacal swivel blade, in good shape, \$400; Bush Hog BH16 6' brush cutter, late model, in good shape, \$1800; King Kutter 6' brush hog, solid older machine, with good straight blades, \$500. Make an offer! 417-214-1191.

Cattle



REGISTERED POLLED HEREFORD BULLS, 23 months old right now, with good dispositions and genetics. 620-778-8561. schlatterherefords.com

Cattle



REGISTERED CHAROLAIS Yearling Bulls. EPDs, BW, WW, YW, big and stout. Weaned heifers and bulls.
Wright's Charolais, Mt. Vernon, MO.
 417-466-3560,
 573-512-1614
 417-466-8117
 417-466-8158



Registered Aged advantaged, calving ease, Red Angus, Sim-Angus, Hereford influenced bulls for sale.
DIAMANTE RED ANGUS RANCH
 Diamond MO.
 Herdsman Jarrod Todd
 417-846-3248.

Limousin bulls, reds and blacks, large selection, bred and open Limousin heifers. Double J Ranch, Will 417-350-9810, 417-214-4567.

HAVE ITEMS to sell? Have too much stuff? Let us help you get the most for it!
 Call 417-624-4100.

SMITH MIDWEST Hay Auction

SAT. JAN. 6 • 10 AM
 4 mi north of Golden City
 500+ tons expected

Kip Smith 417-483-1614
 Bill Garrett 417-214-8249

AGRI-BUSINESS

Hay/Feed/Seed

(175) ROUND net wrapped 1200 lb. bales, fertilized, you pick up, \$75. Vinita, 918-760-4888.

GOOD HORSE HAY FOR SALE:
 Big and small squares Brome and Alfalfa.
 417-850-1726.



HAY: 1st, 2nd and 3rd cutting Mixed grass, 4x5 round bales, net wrapped. No rain. Also have Silage for sale. Call 417-652-7364 or 417-235-9712.

SCHILLING FARMS, Lamar, MO. 417-209-1667.
 •Bermuda 4x5 round bales, \$100.
 •Custom baling, call for pricing.
 •Also, looking for ground to lease.

SMALL SQUARES bales and large round bales of wheat straw.
 417-540-7845 or 417-394-2671.

Red Angus

Service Aged Bulls, Red Cows, Cow-Calf Pairs, Seed Stock, & Show Prospect Heifers



www.orycircle7.com
 Dennis or Joann Ory
 417-652-3425

Cattle

ULTRABLACK & BRANGUS BULLS and HEIFERS
 Excellent Genetics. Gentle dispositions. Delivery available. Lots of happy customers!
Discounts for Veterans!
 Horsehead Ranch
 Talala, OK
 918-695-2357
 Horseheadranch.net

BRANGUS BULLS
 Gentle, small birth-weights. Bulls are service age, virgin bulls, semen checked, raised on forage, and ready to use.
Hatfield Brangus
 Bentonville, AR
 Cell 479-531-2605
 email: drchas@cox.net

CRYSTAL SPRINGS LIMOUSIN.
 Purebred Limousin Bulls, 12-36 months. Reds, Blacks and Whites. Heifers also. Most polled, bred for calving ease, calm. 39 years breeding Limousin. 417-540-0277.

REGISTERED ANGUS Bulls, semen tested, big rugged serviceable aged, top performance breeding with low birth weights.
Elbert Angus Farms
 417-489-0438

PUREBRED HEREFORD and Black Baldy heifers and bulls. Gentle. Pictures available.
J&J Farms.
 Call/text 417-850-8829.

ANGUS, SimXAngus, Simmental yearling bulls. Guaranteed, \$3000. Parmley, Wyandotte. 918-964-1582.

REGISTERED ANGUS BULLS, AI sired. Semen tested and ready for service.
 Our Place Angus,
 417-825-9862.

Need something? Let us help you. You can advertise that you are looking for a special item.
 Call 417-624-4100 for more information.

Hay/Feed/Seed

QUALITY FEED at Affordable Prices.
 16% mixed feed, \$300 a ton,
 \$290 in bulk;
 dry distiller grain, \$400 ton;
 16% mixed feed in 50lb sacks \$9.
 1200lb. box on pallet \$180
 Bulk price \$10 off board price.

We have small squares!
 Alfalfa: \$10
 Mixed grass: \$7

Call for details.
 colleyfeed.com
 Located 4 miles west of Stotts City on Farm Road 2120.
 Contact: Lance 417-316-0574.
 Prices subject to change without notice.
 Call to inquire.
 Ask about delivery in bulk or super sacks.

Livestock



POULTRY HOUSE REMOVAL
 We buy good quality chicken and turkey houses. Remove the houses and all deconstruction debris. Local professional crews. Serving since 1992.
Cedar Creek Contractors, LLC 785-217-3379.

Advertise your specialty in the Big Nickel Service Directory. Runs every week! Call Grace for special pricing and more information. 417-624-4100.

AUCTIONS & ESTATE SALES

Auction Sales

ESTATE/ MOVING SALES
NEED A SALE? Estate, Moving, Downsizing?
Homes, Farms, Business, Furniture, Cars, Trucks, Tractors.
Just Get Organized
 417-825-7003 Suzanne
 Serving area 18 years.

Auction Sales

Wheeler Livestock Auction

Special Stock Cow Sale

Osceola, MO

SAT., DEC 30, 2023 • 6:00 P.M.

Expecting 1000 Bred Cows, Cow Calf Pairs & Breeding Bulls

Rick Hale-
 • 5 Purebred Char Bulls, 18-20 months, Top Genetics, good Bulls
Diamond JD Gelbvieh-
 • 2 Gelbvieh Virgin Bulls, 16 months, registered Ranch Genetics, home raised & gentle. Comes with 1st breeding season guarantee.
Dogie Farms-
 • 1 Sim/Ang bull, 3 yrs old, 1 Beefmaster bull, 3 yrs old, Home raised & gentle.
Reiff Farms-
 • 1 Blk Sim bull, 2 yrs old, 1 Blk Sim/Ang bull, 14 months

Patrick Buchen-
 • 1 Blk Ang cow, 5 yrs old with Blk Bal hfr, Cow bred back to same bull. Both cow & calf have tender score of 10. 1 Blk Bal hfr, 2 yrs old with blk Bal hfr calf, 2 Blk Ang cows, 4 yrs old with Ang sired calves. All cows exposed back to Blk Bal bull.

Bruce Bradley-
 • 9 Registered Red Ang Hfrs, 2 yrs old, 1050#. Bred to CE Red Ang bulls to calve February 1st. Hfrs will sell with papers. 21 Char & Char X hfrs, 2yrs old, 1100#, bred to CE Red Ang bull to calve February 1st. Outstanding set of hfrs, Complete Health Program.

Dennis Turner-
 • 15 Blk Ang hfrs, home raised, weighing 1050#, AI bred to Tahoe, calving February 15th 2024.

Bob Chapman-
 • 8 Char Red Angus X heifers, 2 yrs old, 1050#. Bred to Wagyu Angus X bull. Calving February 1st.

T & L Farm-
 • 20 Fancy Angus cows, 4-5 yrs old, 1300#, with 20 Blk calves up to 350#. Cows bred back to same bull. All cows big & gentle, calves tagged to match.

Loren Reiff-
 • 10 Fancy Angus heifers, 2 yrs old, 1150#, with Angus sired calves weighing 150#. 25 Fancy Angus cows 3-6 yrs, 1300#, with Sim sired calves weighing 250#. The above 35 cows are super fancy Worthington Meade Farms or Lucas Genetics. The best you can get, will work for anyone.

Thomas Farm-
 • 10 Black Angus heifers, 2 yrs old, 1000#, with Angus sired calves weighing 200#. 45 Black Angus cows, 3 yrs old, 1050#, with black Sim sired calves. The above 55 cows all home raised & have had all shots. Had Hereford bulls put with November 24th, calves tagged to match. 3 Purebred Hereford bulls, 4 yrs old, 1700#, will sell after pairs.

J & L Denny Dispersal-
 • 60 outstanding Angus & Sim Angus cows, 3-6 yrs old, 1250#, with 60 Angus sired calves weighing 250#. Cows bred back to Hereford bull. 50 Angus cows, 3-6 yrs old, bred to Hereford bull, to calve February 1st. Cows are gentle & good.

Freeman Farms Dispersal-
 • Spring Calvers - 24 Fancy Red Balancer cows, 3-6 yrs old. Bred to Judd Ranch Bulls, will calve February 1st for 60 days. All cows are home raised, gentle, and have many years of Judd Ranch Genetics. Complete Health & Mineral Program.

Wes Hudson Dispersal-
 • Fall Calvers- 28 Blk & BWF cows, 3-6 yrs old, 1300# with Char sired calves weighing 300#. Cows bred back Char on December 1st. 36 Blk & BWF cows, 3-6 yrs old, 1300# with Angus sired calves weighing 300#. Cows bred back to Angus bulls December 1st. 10 Angus heifers, 2 yrs old, 1100# with Angus sired calves weighing 150#. Bulls put out December 1st. The above cows all home raised, many years of top genetics & well cared for. This is a top set of fall calving cows with years of records to go with them.

Phil Sutherland-
 • Dispersal Spring Calvers- 88 Blk & BWF cows, 4-7yrs old, 1250#, bred to Blk Balancer bulls and are set to calve starting February 1st. All cows are good calf raisers & have the Complete Health Program.

Betteis & Rotert Dispersal Sold Farm-
 • 30 Blk Angus cows, 5yrs-BM, 1250# with 30 Angus sired calves weighing 250#. Gardiner Genetics. 31 Angus cows, 5yrs-BM, 1250#, bred to Top Bulls and set to calve February 20th for 75 days. Calves sired by SEO Angus bulls, cows bred back to SEO Angus bull.

MoHawk Farm Complete Dispersal-
 • 70 Red & RWF X cows, 5yrs-BM, 1250#, with Angus sired calves up to 600#. Cows bred back to Angus bull, older cows & big calves will sell Thursday December 28th.

Joe Heath-
 • 10 Red Angus Cows, 3-6yrs old, bred Red Angus, set to calve in February.

Mitch Grace-
 • 6 Home raised Blk Angus cows, 3-6 yrs old. Bred to blk Balancer bull and are set to calve starting February 10th.

Ronnie Reed-
 • 40 Angus cows, 5-7 yrs old, 1250#. All cows are home raised, gentle, and bred to top Angus bulls. Set to calve starting on January 20th.

Bar W Ranch-
 • 29 Blk cows, 3-5 yrs old, 1150# with 9 calves weighing 250#. Rest of cows are bred 3rd to same bulls. 13 Char X cows, 3-5 yrs old, 1250# with 9 calves weighing 200#, rest bred 3rd.

Minnich Farm-
 • 28 Blk & BWF cows, 3 yrs old, bred 3rd to Angus bull. Set to calve starting February 10th for 70 days. 35 Blk & BWF cows, 5-7yrs old, with 35 Angus sired calves up to 300#. Cows bred back to same bull. 50 Mixed cows, 4-7yrs old, bred 2nd & 3rd to Angus or Char bulls.

Mark Wilson-
 • 6 Blk & BWF cows & 6 RWF calves weighing 250#. Cows back with Hereford bull, very gentle cows. Complete Vax program.

FOR CONSIGNMENTS PICS/VIDEO- WEBSITE AND FACEBOOK
 wheelerlivestock.com/search Wheeler Livestock Auction on FB

Wishing everyone the happiest of holidays from everyone here at Wheeler Livestock

Feeder Sale- Thursdays at 11 a.m. central
Special Feeder Sales are 1/4, 1/11, 1/18, 1/25-2024
January Stock Cow Sale- Jan 27th 2024 at 6 p.m. central

Osceola, MO • 685 SE 13 Hwy., PO Box 560
 BARN 417-646-8102

WHEELER LIVESTOCK AUCTION INC.



Byron Wheeler-417-777-0897
 Lyndon Ropp-918-325-1616
 Kevin Wade-660-492-3279
 Denver McGinnis-417-399-2701
 Sam Francka-417-399-7113
 Tim Sherrer-573-855-1951
 Burleigh Wheeler-417-840-6561
 Red Whistance 417-276-7909
 Les Tennis 417-466-8786

Austin Shelby, Barn Manager- 417-309-1350 | Darwin Hearing, Field Rep- 417-296-1029
 Sue Hemenway, Marketing Manager- 417-839-9316 | Lolly Sheldon-417-296-4258

Bid online on CattleUSA • www.wheelerlivestock.com
 • Like us on Facebook-Wheeler Livestock Auction

There's a better way to get noticed.



Keep life simple. Take out an ad.



BIG NICKEL

New and improved Big Nickel website WWW.BIGNICKEL.COM

- E-edition
- Interactive Auction page with calendar, directory and auction ads
- Fresh and relevant editorial content
- Direct links to advertisers' websites.
- Marketplace of advertisers with each week's ads, as well as expanded listings with hours, directions and business highlights for featured advertisers.
- All ads organized by category on one page
- Exciting promotions and enter to win contests!
- Business and reader spotlights!
- Location finder for picking up a paper copy of the Big Nickel!
- Self-service classified liner ad purchases

For questions or to place an ad, call:

417-624-4100

FARM & ESTATE AUCTION

Monday, January 1st, 2024 ~ 10:00 AM

LOCATION: 400 East 1500 Road, Sheldon, MO; Directions: From County Line Road On E Hwy In Montevallo, Mo Area Go South On 3125 Road Approx 3 Miles To 1500 Road Then East To Sale Site (Watch For Signs)

Auction For Ron Hines

Furniture, Antiques & Households: Blonde Oak Roll Top Desk, Blonde Oak 4 Door File Cabinet, Barnwood Desk, Slim Wood Chest Of Drawers, Full Size Lift Bed, Several Homemade Clocks, Office Chairs, Stainless Table, Humidifier, Some Household Cookware & Kitchen Items, Ant Grinding Bench, Ant Sled, Ant Copper Boiler, Ant Hay Trolley Made Into Hanging Light, Several Flat Screen TVs, 2 Big Deep Fryers, Lots Of Other Small Household Pcs Not Listed
Truck, Mowers, Log Splitter, Professional Smiler, Woodworking Tools, Shop Tools & Outdoor Related Items: 2017 Ford F150 Eco Boost Crew Cab Truck Is Fully Loaded, Has 6 1/2 Ft Bed, & Only 99,000 Original Miles, Professional Hidden Valley Portable Smoker On Covered Trailer W/Blue Tooth Gauges, Probes & Fully Loaded, New Used 1 Time Country Tough 25 Ton Portable Gas Log Splitter, Bad Boy Maverick 60" Zero Turn Mower W/747 Kohler Motor, Like New 2021 Snapper 42" Hydro W/Cruise Control Riding Mower, Yard Utility Dump Trailer, Battery Operated Front Tine Tiller, Stihl MS171 & MS250 Chainsaws, Gas Leaf Blower, Back Pack Sprayer, 6.5 Total Max Generator, Upright 220 Air Compressor, Sm Portable Air Compressor, Stihl Pole Saw, ATV Seeder, 100 Lb Propane Tank, Lincoln 140 Pro Mag Welder On Cart, Cutso Plasma Cutter, Torch Gauges & Cart, 100 Ft Torch Hose On Reel, Welding Table, 100 Ft Air Hose On Reel, Chainsaw Sharpener, New Dry Wall Lift, Dewalt Table Saw On Portable Table, Dewalt Chop Saw On Sliding Table, Grizzly Ind Shop Air Vac, Grizzly Scroll Saw, Bosch Router On Portable Table, Delta Dual Sander On Table, Delta Drill Press, Several Sm Wood Working Tools, Several Alum Ladders, Shop Fans, Rigid Shop Vac, Heavy Duty Shop Shelves, Several Heavy Duty Shop Cabinets & Portable Working Shop Tables, Full Gas & Diesel Safety Cans, Air Tools, Sm Hand Tools, Lg Creeper, Yard Pull Utility Wagon, 50 Ft Drain Hose, Greenhouse Supplies, Hydro Phonic Items, Lawn Care Equipment, 20 Ft Outdoor Canopy Tent, Outdoor Games, Outdoor Chairs, Camping Items, Portable Shooting Bench, Duck & Turkey Decoys, Some Hunting Items, Other Items
Tractor, Side By Side, Equipment, Trailer, Farm Related Items: 2019 Polaris Ranger 570EFI Side By Side W/Only 635 Hours, 2011 Tilt Flat Bed 6x12 Trailer W/New Tires, Kioti DK513SE 4x4 Diesel Cab Tractor W/ KL5521 Loader, Tractor Is Fully Loaded, Has Hydraulics, Back Up Camera Only 319 Hours, 10 Ft T510 Bat Wing Bush Hog, Brute Front End Loader Hydraulic Gripper Junior Tree Ripper, Front End Loader Hydraulic Grapple, Front End Loader Pallet Forks, Other Smaller Attachments For Tractor, New 3 Pt Brute HB1008 Hydraulic 3 Way 8 Ft Blade Only Used Once, 3 Pt Brute 8 Ft D3107 Disc Only Used Once, 3 Pt Derborn 2 Bottom Plow, 3 Pt Field Drag Harr Can Be Hooked From Both Sides, Sm Field Sprayer, Ford 3 Pt Post Hole Digger, Herd 3 Pt Seed Broadcaster, 3 Pt Box Carry All, 3 Pt Boom, Steel Posts, Other Farm Related Items Added Sale Day

Auctioneers Note: It Is An Honor To Be Conducting This Auction For Mr. Hines. As Ron Is Selling His Farm & Is Relocating To Nevada We Will Offer A Very, Very Clean & Outstanding Auction. There Will Be Something Here For Everyone Including Excellent Clean Furniture, Antiques & Households. Outstanding, Clean & In Like New Working Order Woodworking & Shop Tools. Truck, Tractor, Mowers, Trailer & Equipment Are All In Top Quality Condition & Just Like Brand New. You Will Not Find A More Clean & Well Taken Care Of Auction. What A Way To Start The Year. Sale Order: Furniture, Antiques & Households Will Sell First Then Tools & Outdoor Items. At Approx 12:30 PM Will Offer Truck, Tractor, Equipment, Mowers & Large Items. See Ya There!!!
 Terms: Cash or check with proper ID. Now accepting most major credit cards. Nothing removed until settled for. Statements made the day of sale takes precedence over printed material. Everything sold as is where is. Not responsible for accidents. Restroom available. Concessions Provided. Check our website for upcoming auctions and for additional pictures!!



NANCE AUCTION SERVICE

No Matter How BIG or small We Do Them All!!

Col. Bill Nance 417-214-0093 nanceauctionservice.com Sean Beszley 417-247-6754

LIVE & ONLINE AUCTION

9273 Otter Drive Neosho, MO 64850
90 Acres m/l

LIVE AUCTION TO BE HELD AT: **LAMPO RECREATIONAL BUILDING**
500 E SPRING ST NEOSHO MO
January 17th 10am

8% Buyers Premium



SELLERS: FIRST PRESBYTERIAN CHURCH OF JOPLIN

Kurt Hollenberg, Broker/Owner
573-220-6155
kurth@missourilandandhome.com
missourilandandhome.nextlot.com/auctions




OUTSTANDING FENTON GLASS AUCTION

NEW YEARS DAY ~ JAN. 1, 2024
STARTING AT 10:30 LOCATED AT BIG D'S -219 WEST PINE STREET COLUMBUS, KS. INSIDE WITH SEATING AND REFRESHMENTS.

DO NOT MISS THIS BEAUTIFUL SETTING OF FENTON GLASS BEING OFFERED FOR SALE, THIS WILL BE THE FIRST AUCTION OF OTHER FENTON GLASS AUCTIONS TO FOLLOW, DATING BACK TO THE 90'S. WE WILL BE SELLING FANTASTIC PIECES OF BURMESE FENTON GLASS, INCLUDING BLUE AND GREEN PCS, WE WILL BE FEATURING DAVE FETTY'S PIECES, CRANBERRY HOBNAIL, CASED GLASS AND LOTS OF HANDPAINTED PIECES, RED STRETCH CARNIVAL, FOLK ART, FAVERINE AND MANY MORE RARE AND HARD TO FIND GLASS PIECES. A COLLECTION OF 11 OUTSTANDING FENTON LAMPS WILL BE SELLING. IT HAS TAKEN MANY YEARS TO ACCUMULATE THESE AMAZING PIECES OF ART GLASS, DO NOT MISS THIS AUCTION.











Big D's Auctions
219 W. Pine
Columbus, KS 66725
620-429-2858 (Big D's)
620-762-2416 (Cell)

AUCTIONEER: DELBERT ROWDEN 620-762-2416

SEE OUR WEBSITE FOR COLORED PHOTOS. www.delbertrowden.com

ANTIQUQUE AUCTION


Saturday, December 30th, 2023 ~ 10:00 AM
LOCATION: 112 South Commercial Street, Branson, MO; By The Landing (Watch For Signs)
Auction For 1 Oak Antiques, Mr. & Mrs. LaPlant, Owners

Antique, Primitive & Other Furniture: Rare Ant Mini Grandmas Opossum Belly Cabinet, Rare Ant Columbus 1800's Store Counter Glass Display, Ant 1800's Square Counter Top Glass Display, Ant 1800's Lg Square Courthouse Partners Table From Courthouse In Forsyth, Ant Hoosier Kitchen Cabinet W/Sifter & Storage Door, Rare Ant Kerosene Piano Lamp On Stand, Rare Ant Chinese Prayer Bench W/Drawer, Ant Edison Oak Table Top Victrola (Works), Ant Peary Brand Grandfather's Clock W/Moon Faces & 3 Different Chimes, Ant Oak Washstand, Ant Oak Library Table, Ant Fireplace Mantle, Ant Oak Fern Square Table, Ant Mini RxR Desk, Ant Oak Square East Lake Table, Ant Dark Oak Library Table, Ant Child's Wood Kitchen Cabinet, Ant Child's Porcelain Top Table, Ant Cherub Iron Lamp, 2 Ant Rocking Chairs 1 Rare Low Bottom, Ant Elgin Mantle Clock, Ant Star Silk Spool Cabinet, 1950's Singer Sewing Machine In Cabinet, Ant Trunks, Ant Quilt Ladders, Ant Painted Kitchen Hutch, Area Rugs, Oak Stool, Several Ant Pictures, Prim Shelves, 6 Neat Ant Base & Glass Top Display Tables, Leather Couch, Cherry Desk Table, Several Plastic Bins, 2 Metal Shelves, Other Items Not Listed
Rare Pedal Car Items, Old Toys, Indian Items & Guns: Very Rare Only 5 Known In Existence 1920's Original, Gendron Pioneer Flyer Pedal Locomotive, Very Rare Ant Original Pedal 1910's Race Car, Rare 1920's Original V12 Super Drive Pedal Car, Rare 1930's Original Mary Champion Ball Bering Pedal Car, Rare 1940's Original Marx Jet Red Super Pedal Car, Rare 1940's Hamilton Steel Original ATA Pedal Army Jeep Has 1940's Coast To Coast Pedal Wagon (Will Sell Choice), Rare 1930's Chain Drive Original Western Flyer Pedal Tractor W/Rare Wide Front End, Rare Ant Texaco Metal Tanker Truck W/Original Store Adv Sign (Will Sell Together), Several Rare Original Metal Toy Trucks & Other Pcs, Ant 1940's Wood Sled, Ant Steel Craft & Lighting Express Metal Trains, Ant Toy Wagon, Ant Paper Mache Horse On Cart, Indian Memorabilia Inc Vest, Tomahawk Type Hatchet, Rare Catlanite Pipe, Blanket, & Reservation Knife, Rare Metal Spearheads, Ant Gun Powder Flasks, Several Ant Wood Fishing Lures & Collectibles, Ant Minnow Trap, 1930's Vintage Tackle Box, Lg Ant Bear Trap, 1800's Regex & Co Double Barrel Double Trigger Double Hammer Black Powder 12 Ga Long Barrel Stagecoach Gun, Win Model 12 Pump 12 Ga Shotgun, Ithaca Model 72 Lever Action 22 W/Hex Barrel & Engravings, Stevens By Savage Side By Side 410 W/ Double Trigger, Some Ammo
Antiques, Old Signs, Gas Memorabilia & Other Rare Items: Rare Ant 1800's Cobblers Or Blacksmith Bench/Shaping Table W/Adj Stand, Rare Ant 1910's Daisy Wood & Metal Square Cooler, Ant Myers From Memphis, TN RxR Cart, Ant RxR Lanterns, Rare Ant RxR Adams Express Strong Box, Ant Cocks Inc Redwing, Lots Of Rare Gas & Oil Adv Pcs, Rare Ant Blanke Coffee Bin, Lots Of Rare Metal & Porcelain Signs (WOW!), Rare 1800's Ant Rochester Optical Camera Co "King" Wood Camera W/Tripod Stand, Ant 1905 Camera Hunting Picture, Lg Lot Of Ant B&W Photos Inc General Lee, Ulysses S. Grant & 1 Each Of Union & Confederate High Rank Officers Also Navy Officers W/Wood Boat, Old Metal Coffee & Other Adv Tins, Ant Coke, Pepsi, RC & 7Up Crates, Ant Sugar Buckets, Rare 1924 Coda Scola Mini Projector W/ Mighty Mouse Film, 1923 Strauss Bro Tailor Suit Catalog, Ant Rare 2 Seat Schwinn Bike, Ant Bike Parts Inc 2 Springer Frames, Ant Metal Win Lock Sign, Mini Draft House 1 Bottom Plow, Neat Polynesian Hand Carved Face Statue, Ant Wood Ducks, Ant Dough Bowl On Stand, Ant Lg Mortar W/Pusher, Ant 1950's Teal Fan, Ant Pachinko Game, Ant Wood & Iron Wheels, Ant License Plates, Goodyear Tire Neon Sign, Spark Plug Neon Sign, Old Quilts, Ant 7Up Bottles & Carrier, Ant Adv Wood Boxes Inc Unusual Miller Wood Beer Crate, Ant Humidor & Pipes, Ant Pulleys, Old Collector Jars, Ant Apple & Butter Paddles, Old Marbles, Old Pottery, Old Glassware, Old Graniteware, Ant Luggage, Ant Silver Set In Box, Ant Kitchen Utensils, Ant Wood Chicken Coop, Ant Hub Caps, 6 Ft Christmas Tree, Several Ant Ornate Christmas Ornaments, Lg Lot Of Crafting Items, T-Shirt Making Press, Other Items Not Listed
Auction Preview Days & Times Will Be December 22nd & 23rd From 10:00 AM To 3:00 PM Also December 28th & 29 From 10:00 AM To 3:00 PM. Parking Behind Building In Parking Lot

Auctioneers Note: It Is An Honor To Be Conducting This Auction For Mr. & Mrs. LaPlant. WOW!!! There Are Several Amazing, Rare, Very Rare Antiques, Pedal Vehicles, Toys, Gas, Oil & Signage Memorabilia & Several Other Rare & Hard To Find Antiques. Don't Forget Outstanding, Rare Furniture As Well. If You Are A True Blue Collector You Do Not Want To Miss This Auction. What A Way To End The Year With The Best Antique Auction We Have Done All Year!!! Bring A Friend & Your Camera For This Outstanding Rare Antique Auction. Sale Order: As Items Are On Furniture & Walls There Will Not Be A Particular Sale Order As Lots Of Items Are Very Rare & Unique Anyway. See Ya There!!!
 Terms: Cash or check with proper ID. Now accepting most major credit cards. Nothing removed until settled for. Statements made the day of sale takes precedence over printed material. Everything sold as is where is. Not responsible for accidents. Restroom available. Concessions Provided. Check our website for upcoming auctions and for additional pictures!!

FIND THE
RIGHT RIDE
FOR THE
RIGHT PRICE

*Find the stuff you want.
Sell the stuff you don't.
Save time and money with the
local newspaper classifieds!*





NANCE AUCTION SERVICE

No Matter How BIG or small We Do Them All!!

Col. Bill Nance 417-214-0093 nanceauctionservice.com Sean Beszley 417-247-6754

SMITH MIDWEST *HAY AUCTION*

SAT. JAN. 6 • 10 AM
4 mi north of Golden City
500+ tons expected

Kip Smith 417-483-1614
Bill Garrett 417-214-8249

The Hitch N' Post
Antique & Flea Market

Just a short 30 minute drive from Joplin, MO!

• 76,000 sq. ft.
• Over 400 Vendors

LARGEST FLEA MARKET IN THE 4-STATE AREA!

Mon-Sat: 10:00 - 5:30 pm
Sunday: Gone to Church!
Come Shop for the **WHOLE DAY!**

God Bless America!
401 Commerce Ave. Commerce, OK 918-675-4519
www.thehitch-n-post.com
David L. Mason - Owner

New Years Day Estate Auction
MONDAY, JANUARY 1ST, 2024 • STARTING AT 10:00 AM
Located: Homer Cole Center, 303 Joplin St., Pittsburg, KS 6676

GUNS- Brass Framed Winchester 1866 .44 cal; Matching Set Whitney Reel .32 cal pistols; Browning .44 Lever Action; Winchester 73 38 40 .cal; Winchester 73 32 20 .cal; Winchester 92 .44 cal; Henry 12 ga. Coach Gun; Smith & Wesson Model 36 .38 Special; Rock Island .45 cal Pistol; Randall .45 cal Pistol; Ithica .45 cal Pistol; Springfield Army 45 cal Pistol; Colt Single Action 45 cal Pistol; Winchester 1906 Pump 22; Remington Sportsman 12 ga. Mag Pump Shotgun; Savage MK11 Bolt Action 22; HR 22 Mag Pistol; PAF "Junior" WWII Gun .24 cal.; WWII French 1918 "Bronco" .25 cal.; OWA WWII Gun 6.35 cal.; Waffenfabrik Mauser A-G Oberndorf A.N 6.35 cal.; Colt Junior Made In Spain Gold Color .25 cal; Colt Auto .25 cal.; Savage Auto Pistol .32 cal; Smith & Wesson .32 cal. Double Action Model 1887; Smith & Wesson Model 1 1/2 .32 RF 2nd Issue; Rugar Black Hawk Revolver .45 cal 7" Barrel; Colt Police Positive .22WRF Nickel Plated Serial# 3066; Sears and Roebuck Lever Action Rifle Model 54 30-30 cal.; Lamber Arms Model 8445 T Over/Under 12 ga.; Tri Star Over/Under 12 ga. 3" Mag. Drop in Chokes; Browning Over/Under "Diana" Grade Exsibator Engraver "L. Severin"; Savage Lever Action Model 1899 .22 HP cal.; Stevens "Favorit" .32 Long cal. Serial #98; Stevens "Marksman" .25 RF cal.; Stevens "Marksman" .32 long cal.; We're still unpacking, there may more guns at the auction!

ANTIQUES & PRIMITIVES - Large Cast Iron Cauldrons; Wooden Indian; Several Old Children's Toys; Several Signs: Skilgas, Old Road Signs, Photo Booth, Ride The Train, Hazard Slow Dust, Armstrong Tires, Mopar Parts, Royal Crown Cola, Uniroyal Farm Tires, Coca-Cola Button, Road Closed and LOTS MORE! Bamboo Fly Rod; Old Circus Carousel; ACME Fence Display; World War II Newspaper Clip; Old McDonald's Banner; Lots of Art: Mostly Framed Pictures; Old Bubble Glass Photo; Spirits of the Old West; Old Military Picture; Motorcycle Saddle Bags; Fire Extinguisher Made Into Bank; Bank Bags; Old Timer Knives; Box Full of Old Spurs; Lots of Crocks; Cast Iron; Small Wagner Tea Kettle; Small Cast Iron Pots; Honey Extractor; Pepsi Sign; Metal Windshield Box; Brass Spittoon; Elvis Presley Pictures; Metal Train Set; Chevrolet Old Pickup Tailgate; Auto Front Clip; Coca-Cola Back Bar Piece; Box of Louis Lamour Paper Backs; Lots of Antiques and Primitives Not Listed!

Owners: Thompson Estate Heirs

AUCTIONEER'S NOTE: Because of the large amount of antiques & primitives we have from this estate the guns will sell at 1:00 pm this will be a sit down auction hope you can make it!

AUCTIONEERS
Bud Armstrong, Auctioneer - 918-541-8006
Cody Ross, Auctioneer - 417-529-4416
Cashier - Earl Reynolds



Online Only ★ ★ ★ **NEW YEARS DAY** ★ ★ ★
ESTATE AUCTION

STARTS ENDING: MONDAY, JAN. 1, 2024 @ 1:02 PM (SOFT CLOSE)

104 S. Chouteau Ave. • Chouteau, OK 74337

1600 + LOTS

Estate of Eileen Warren

IN-PERSON bid placing available on Friday, December 29th at the PREVIEW from 9 to 1 - Online Terms Apply

Guns & Ammo, Enclosed Trailer, Trailers, Classic Cars & Trucks, Knives, Jewelry, Diamonds & Precious Stones, Vintage Furniture, Comic Books, Fenton, Niloak & Weller Pottery, Vases, Tools, Patio Furniture, Smoker, Hundreds of Antiques & Collectibles, Coins, Small Bronze Statues, Modern Art and Indian Art!

IN-PERSON PREVIEW & PLACE BIDS:
Friday, December 29th from 9am to 1pm
PICK-UP: Tuesday, January 2nd from 9am to 6pm

For more information and pictures
www.chuppsauction.com

Auctioneer's Note: THIS IS GOING TO BE A GREAT WAY TO START THE NEW YEAR!!! Lots more items not mentioned, come to the PREVIEW and CHECK IT OUT! Follow us on Facebook for updates or our website for pictures at www.chuppsauction.com.

TERMS: Cash - Pay Day of Auction - Most Credit Cards Accepted - Check with Proper ID - Concession NOT RESPONSIBLE FOR ACCIDENTS. ANY ANNOUNCEMENTS DAY OF SALE SUPERSEDES PREVIOUS ADVERTISING.

CHUPPS AUCTION & REAL ESTATE

Stan Chupp (918) 638-1157
Dale Chupp, Realtor
Coldwell Banker Select (918) 630-0495
Jonathan Miller (918) 237-7582

If You Want To Sell. We're The Ones To Tell!!

NEW YEARS DAY PUBLIC AUCTION
MONDAY, JANUARY 1ST, 2024, 10:00 A.M.
AUCTION TO BE HELD AT THE NEOSHO SHRINERS BLDG
13167 LAURA LANE, NEOSHO, MO

Directions: From Interstate 49 And 86 Highway, At Neosho, MO, Go East On 86 Hwy To Keene Lane, Turn Right On Keene Lane, (By Access Family Care Medical Center), & Go to Sale At End Of Road. **WATCH FOR SIGNS!**

TOOLS: Set Of Ping Golf Clubs, MILLERMATIC 140 Mig Welder W/Argon, STANLEY Shop Fan, CALVARY Saddle & Other, RAILROAD Oil Lamp, CITY SERVICE Fuel Can, Draw Knife, Hammers, Rolling Battery Chargers, Rods & Reels, Fishing Tackle, Lay Down Air Compressor, MILWAUKEE Portable Band Saw, Shop Vac, Drop Cords, Planes, Files, Chisels, Pulleys, Drawered Tool Box, Car Spot Light, Wood Chisels, Bars, Elderbrock 350 Chevy Intake, Welding Vise Grips, Punches, Machinist Tools Calipers, Other, T Handle Allen Wrenches, Sockets, Ratchets, Extensions, Saws, Pruners, Plyers, Linde Arc Welder, Leaf Blower/Vac, Wood Carpenter Tool Box, Axes Double & Single Bit, Keen Kutter & Others, Hand Saws, Foot Scraper, Bottle Jacks, Fence Pliers, PVC Cutter, Poly Work Box, Tool Caddy, Crescent Spanner, Wrench, Tap & Die Set, End Wrenches, Drill Bits, Sad Irons, Black SAMBO Fishing Plug In Box, Power Tools Drills, Sanders, Saws, Hidden Punkin Seeds, Battery Opp Drills, Sanders, Etc!, Foot Adz, Sprout Knife, Hatchet, Well Bucket, Wood Level, Pex Crimpers, Keen Kutter Wood Plane, Barn Lanterns, Carbide Lights, Cast Iron School, Bell W/Yoke, Cast Iron Levels 1 FT & 1/2 FT, 7 FT Stanley Folding Ruler, Angle Grinder, Sawzall (Battery Opp), CRAFTSMAN Bench Vise, Vertical Horizontal Belt & Disk Sander, Push Plow, Wire Egg Baskets, Coaster Wagon, Buzz Saw Blade Yard Art, COLEMAN Lanterns, Mesh Coaster Wagon, Live Traps, RR Baggage Cart, Post Drill, Press, Meat Slicer, Horse Shoes, Strawberry Sorter, Corn Dryer, Reel Push Mower, 2 Man Cross Cut Saws, Sled, Red Coleman Lantern, Mig Wire, Welding Rod, SCHWINN ADVENTURE, Folding Camping Bike.

STAMPS, COINS, GUNS & MUSIC INSTRUMENTS: HENRY GOLDEN BOY 22 Cal, Lever Action, SMITH & WESSON 9mm, Mod SD9VE, Auto In Box, REMINGTON Mod 742 Wood Master, 30/06, Auto W/Scope, WINCHESTER Mod 290, 22 Cal, Auto W/Scope, BELKNAP 12 Gauge, Single Shot Auto, ITHICA Mod M1911 A1 US Army, 45 Auto, IVER JOHNSON 32 Cal Revolver, Swords, Gun Cases, Pocket Knives, Mounted Bass, AMMO, Compound Bows, Deer Blind, Violin, Tater Bug Mandolin, Brass Bugle, Large Stamp Collection, First Day Issue Stamps, 1/2 Cent 1802, 35 & 31, Large Cent 1860, 20, 31, 40, 1857 Flying Eagle, Indian Head Pennies 1864 L & Others, 1909 S Indian Head, 1909 S Wheat Pennies, Wheat Pennies, 1853 Arrows 1/2 Dime, Shield Nickels, Buffalo Nickels 1913 O, 14 O, Others, Jefferson Nickels, Seated & Barber Dimes, Mercury Dimes 1921 D, 21, 1875 S 20 Cent Piece, 1876 CC Seated Quarter, 1897 O Barber Quarter, 1837 Seated 1/2 Dollar, Standing Liberty Quarter 1917 S (1 & 2), Barber 1/2's 1893 S, 94 S, 95 O, 95 S, 96 S, 1916 D, PS Walker 1/2's, & Others, Franklin 1/2 Proof & Others, 1878 CC, 1890 CC Morgan Dollars, Morgan & Peace Silver Dollars (High Grade), Silver Rounds Eagle, Maple Leaf, Britannia Silver Bars 10 oz, 1914 \$1 Dollar National Currency, 1907 Wood Chopper Note \$5, 1914 \$5 Note, Silver Certificate Red Seal Note, 1963 & 74 Fractional Note 10,25,50 Cents, 2007 \$5 Gold Eagle, 1847 \$10 Gold Eagle, 1888 S \$20 Double Eagle Gold Coin, 1/10 oz Silver Rounds.

FURNITURE & MISC.: Walnut Wash Stand W/Chestnut Pulls (ANTIQ), Oil Lamps, National Brass Cash Register (ANTIQ), Iron Wheel Yard Art ... **AND LOTS MORE!!! CHECK OUT WEBSITE FOR FULL LISTING & PHOTOS!!**
WWW.CIRCLELAUCTION.COM & **FACEBOOK!!! ANGELS FOOD BUS WILL BE THERE!!**

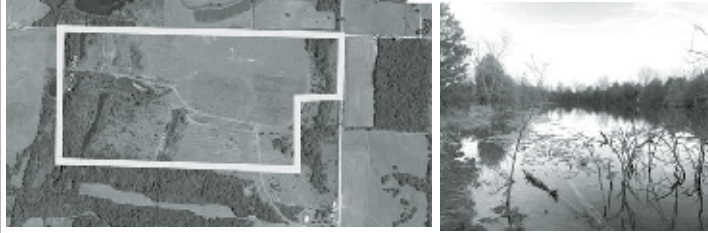
ID required for bidder number - Not responsible for accidents - Lunch - Terms Cash/Visa/MC/Discover - Preview by Appointment

ABSOLUTE LAND AUCTION SATTERFIELD

January 6, 2024 • 10:00AM BRONAUGH MO

DIRECTIONS: From Bronaugh Mo go west on N HWY to 925 Rd go North on 925 TO Waldo go west on Waldo Property is on the South Side of Waldo .

ABSOLUTE - 162.84 ACRES - ABSOLUTE



If you are a hunter, this property has 2 strip pits lots of cedar trees making it great for deer habitat along with open ground to run a few cows,

TERMS AND CONDITIONS: Terms: 10% down day of sale cash or personal check Remainder in certified funds at closing 30 days or less.

See additional pictures and info at www.tncnevada.com

Jay Wortman Agent 417-665-4721
Cole Abele Auctioneer 417-684-0881
TOWN & COUNTRY AUCTION SERVICE
Doug Wortman Auctioneer 417-448-9540

1700 W. Austin, Nevada Any statement made day of sale will precede any printed material. Office - 417-667-2966

LOCAL MATTERS

Please support the advertisers that power your community paper.

NEWSPAPERS
MATTER
NOW MORE THAN EVER

GOVERNMENT EQUIPMENT AUCTION

375+ ITEMS SELL NO RESERVE! TUESDAY, JANUARY 9



DN7160 '08 CAT 12M motor grader



KU9041 '05 Case Maxxum MXM120 MFWD tractor



KU9036 '02 Sterling LT9500 dump truck



KU9040 New Holland T6030 tractor



DN7159 '10 CAT 12M motor grader

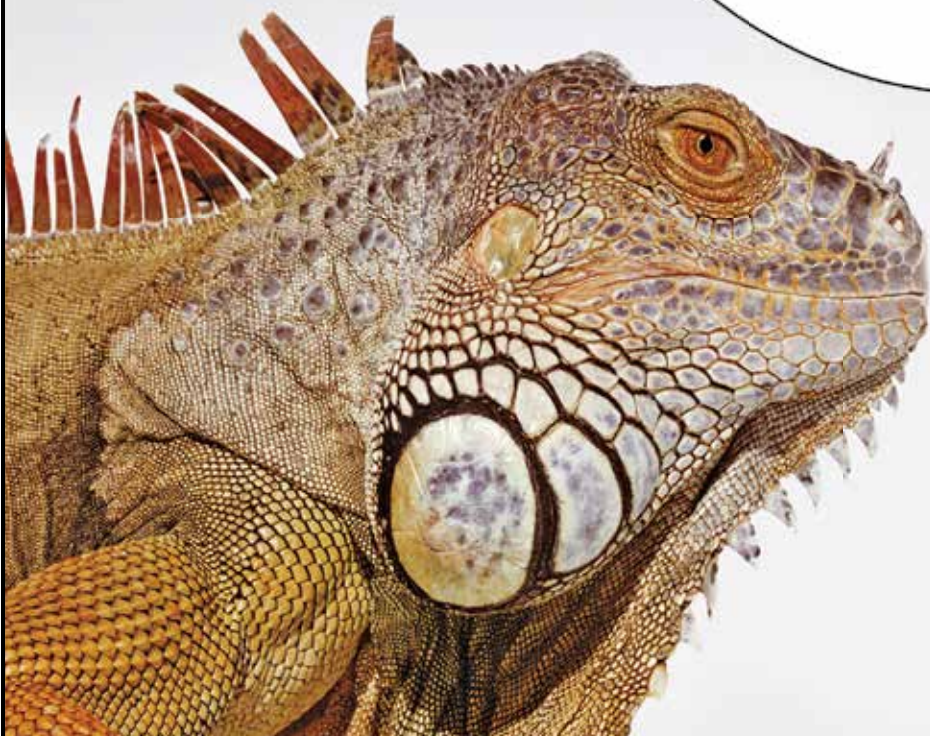


INVENTORY INCLUDES: motor graders, tractors, dump trucks, pickup trucks, bucket trucks, tank truck, service trucks, dump flatbed truck, SUVs, digger derrick truck, backhoes, wheel loader and more. All items are sold "AS IS." 10% buyers premium applies. 866.608.9283

BID NOW! purplewave.com

FIND THE
PERFECT PET
FOR THE
PERFECT PRICE

Find your next fluffy, furry or feathered friend in your local newspaper classifieds!



MAHINDRA



#1 Selling Farm Tractor In The World!**
 7YR Powertrain Warranty on Most Tractor Series

0 Down, 0% for 60 Months w/ac,
with NO PAYMENT for 90 DAYS
On ALL Models, AVAILABLE NOW!

MAHINDRA 1635 SHUTTLE

35HP, 4WD, w/Loader,
Shuttle Trans

\$346²⁷*/Mo.
2.99% for 84 mo.



MAHINDRA 5145 SHUTTLE

45HP, 4WD, w/Loader,
Shuttle Trans

\$451⁹⁴*/Mo.
2.99% for 84 mo.



MAHINDRA 1626 SHUTTLE

25HP, 4WD, w/Loader,
8x8 Shuttle Trans

\$306⁶⁴*/Mo.
2.99% for 84 mo.



MAHINDRA 1635 HST

35HP, 4WD, w/Loader,
Hydrostat Trans

\$372⁶⁹*/Mo.
2.99% for 84 mo.

MAHINDRA 1640 SHUTTLE

39HP, 4WD,
w/Loader,
8x8 Shuttle Trans

\$385⁸⁹*/Mo.
2.99% for 84 mo.



MAHINDRA 4540 4WD

41HP, 4WD,
w/Loader, 8x2
Gear Trans

\$399¹⁰*/Mo.
2.99% for 84 mo.



MAHINDRA 5155 SHUTTLE

55HP, 4WD, w/Loader,
Shuttle Trans

\$504⁷⁷*/Mo.
2.99% for 84 mo.



MAHINDRA 4550 4WD

50HP, 4WD,
w/Loader, 8x2
Gear Tran

\$425⁵²*/Mo.
2.99% for 84 mo.

**2022 data including all Mahindra Group Brand Sales

*PRICE& FINANCING PROGRAM SUBJECT TO CHANGE

Tatum Motor Company

FARM TOOLS SINCE 1889

931 N. BUS. HWY. 71
ANDERSON, MO
417-845-3563
HOURS M-F 8-5 • SAT 8-NOON

1033 W. HENRI DE TONTI BLVD
(412 WEST), TONTITOWN, ARK
479-361-9488
HOURS M-F 8-5 • SAT 8-NOON

Mahindra
Rise.
www.tatummotor.com
e-mail: tatumtr@olemac.net

MAHINDRA SUPERIOR PERFORMANCE:

• Heavy-duty components: Tough & rugged... Keep right on performing day after day.

• Sturdier chassis: Greater stability... Keeps you safe while handling rigorous work.

703688jn

S A L E S • S E R V I C E • P A R T S