

CELEBRATING
OVER
40
YEARS



Established 1975

BIG NICKEL

THURSDAY,
JUNE 22, 2023

© Phillips Media Group, Inc. 2023. All Rights Reserved

1931 E. 20th Street, Suite 103 • Joplin, MO 64804
417-624-4100

www.bignickel.com

Volume XLVIII Issue 25

R6 RECYCLING
WE PAY CASH
for Scrap Metal
918-675-4118
620 North Park Circle
Commerce, OK 74339

HUGE SELECTION of Hay Trailers



WE DELIVER

THE NEW RED RHINO MAX
the only double wide built that allows
you to dump each side separately.



**Largest Independent
Cattle Equipment
Dealer in America**

Arrowquip Lakeside
Cattle Flow Pearson
Red Rhino Cowco

GOBOB
America's Ranch Equipment
866-287-5504
GoBobBig.com

4th ANNUAL NORTHEAST OKLAHOMA COIN SHOW

New Location!
**COX BUSINESS CENTER
PEPSI EXHIBIT HALL A
100 Civic Center
Tulsa, OK 74103**
June 29th, 30th, July 1st
Home of the Youtube
Meet & Greet!
Thurs. 8am-noon **FOR**
dealers setup
and early birds.
Thurs. noon-5pm
Fri. 9am-5pm
Sat. 9am-4pm
For Info: Mike Boyer
918-787-2646
Sponsored By:
Mid America Coins Inc.



Want to **BUY**
Junk cars and trucks!
Paying top dollar!
You Call- We Haul!
417-626-2277.

ATTENTION!

\$\$\$
BUYING Classic antique
cars and trucks. Running
or not. Also gas pumps,
tractors, farm equip-
ment, old signs, and
running newer vehicles. I
pay cash up to \$1000/up.
I buy one or all on
property.
Honest, trustworthy, and
fair.
Call ME! 417-234-5154.



6 GENERATIONS
SINCE 1903
Buying standing timber
and cut logs. Great prices
on walnut, ash,
white oak, and many
other species.
Call 918-919-9764

BE AN EARLY BIRD! Place
your ads before Monday and
beat the rush!

\$\$\$
**GOLD & SILVER
OF JOPLIN
WE PAY MORE!**
•Gold •Silver
•Diamonds •Coins
Estate Buyers •Free
estimates •50 Years of
experienced buyers.
**Discreet, Honest and
Trustworthy.**
NEW LOCATION
105 N. Rangeline, Suite 2
(US Bank, lower
level, next to mall)
Joplin, MO 417-553-0643

DUNCAN LAWN CARE
Landscaping-Lawn Care
Tree Service
Snow Removal
Licensed
Bonded-Insured
972-992-8516
**See pics on our
Facebook Page**

HAVING A garage sale or rum-
mage sale? Call us for special
pricing. 417-624-4100.

Please print classified ads
on The Big NICKEL website.
Our web address is www.big-
nickel.com

ALL THINGS HAY!
Custom baling.
Taking new customers.
20 miles radius
of Neosho.
Call Junior
417-850-8621.

WANTED
BUYING JUNK CARS! We
pay cash! No title need-
ed. We pick up.
Call/text 918-325-0791.

**Grumpy Grandpa
HANDY MAN SERVICE**
Insured and Bonded.
417-793-4078.

ADVERTISE YOUR Flea Mar-
ket or Antique Store in the An-
tique & Flea Market Directory.
Call Billie for more information
and special pricing.
417-624-4100.

GRAVELY HOMEOWNERS ZT HD SERIES



**LARGE
INVENTORY
IN STOCK!**

**Payments
AS LOW AS
\$122¹⁰mo**

- 10-Gauge Fabricated Deck Design
- Hydro-Gear® ZT-3100 Fully Integrated & Serviceable Transaxles
- Large 22" Rear & 13" Front Tires Providing Superior Traction & Ride Quality
- Foot-Operated Deck Lift System w/15 Cutting Positions
- Adjustable High-back Seat w/Padded Armrest & Plush Foam Cushioning

**4 Year or 500 HR
Warranty**

ZERO DOWN, ZERO PERCENT FINANCING FOR 60 MO. WAC

MODEL #	DESCRIPTION	RETAIL PRICE	SALE PRICE
991268	ZT HD 48 - 23hp Kawasaki FR691 V-Twin, 48" Fabricated Deck, ZT3100 Transaxles	\$7119	\$6299
991270	ZT HD 52 - 23hp Kawasaki FR691 V-Twin, 52" Fabricated Deck, ZT3100 Transaxles	\$7232	\$6399
991272	ZT HD 60 - 24hp Kawasaki FR730 V-Twin, 60" Fabricated Deck, ZT3100 Transaxles	\$7345	\$6499

GATEWAY FARM EQUIPMENT 9723 GATEWAY DRIVE • NEOSHO, MO
417-451-0821 • www.gfeneosho.com

Celebrating 32 Years In Business

Granite- \$48 - \$75 sqft - Installed
Quartz- \$80 & under sqft - Installed



- Granite - Choose from 18 Colors
- Quartz - Choose from 33 colors

NEOSHO MARBLE
Family Owned and Operated Since 1991
www.neoshomarle.com
SHOWROOM LOCATION
18414 Highway 59, Neosho, MO 64850 | 417-455-0470 | M-F 8:30 - 4:30



BIG NICKEL

The Big Nickel is published every Thursday.
© Phillips Media Group 2021. All Rights Reserved

BIG NICKEL

1931 E. 20th Street, Suite 103
P.O. Box 1567 • Joplin, MO 64802
417-624-4100 • Fax: 417-621-0287
EMAIL: classified@bignickel.com
www.bignickel.com

The publisher reserves the right to edit, classify, or reject any advertising copy. The Big Nickel assumes no financial responsibility for typographical errors in advertising or for omission on any advertisement further than the amount received for payment of such advertising in which the error occurred. Advertisers should check their advertising for accuracy when ad appears. The Big Nickel is not responsible for errors after the first insertion. One copy FREE per reader. Additional copies available only upon request. Payment by check authorizes The Big Nickel to electronically collect returned checks, plus \$25 service charge. Stopped or cancelled classified ads will receive an in house credit, good for 12 mos. No Cash/Credit Card Refunds! Copyright 2020. All rights reserved.

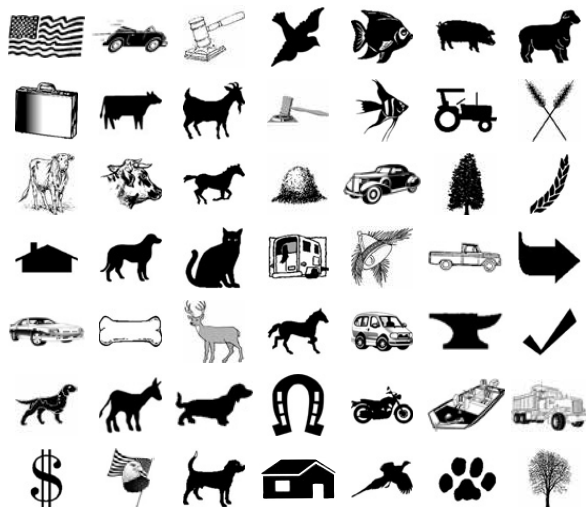
Big Nickel Classified Options

To place a classified Call 417-624-4100,
e-mail classified@bignickel.com

When you place a classified with the Big Nickel you have many options to enhance your classified and make it stand out above the others. Here are a few of the options available:

- Boxed \$2.00 • Bold & Capitalize [First 5 Words] \$2.00
- Graphic Options \$5.00 ea. • Super Graphic \$5.00
- Include Email address \$2.00 • Add a Picture \$5.00
- Include URL \$2.00 • 100% Reverse [Boxed/Boldcaps] \$5.00

Some of our Available Graphics



Available Classifications

A Section

MERCHANDISE

Miscellaneous MERCH
Free
Appliances
Arts & Crafts
Bargain Column
Building Supplies
Clothing
Computers/Accessories
Electronics
Furniture
Hobbies
Jewelry
Musical Instruments
Office Equipment
Pawn & Thrift
Sports Equipment
Wanted-Merchandise
Pets & Supplies
Lawn & Garden
Antiques & Collectibles
Flea Markets
Wood & Accessories

ANNOUNCEMENTS

Community Events
Thank You
Card of Thanks
In Memoriam
Lost & Found
New Businesses
No Hunting or Tres-

SERVICES

Accounting-Services
Air Conditioning/Heating
Alterations & Sewing
Appliance Repair
Auto Repair
Backhoe/Bulldozer
Bush Hogging
Chat/Dir/Gravel
Child/Elderly Care-Ser-
vices
Cleaning
Computer
Construction-Services
Educational/Instruction
Electrical/Plumbing-Ser-
vices
Funeral Needs
Hauling / Moving
Health/Beauty/Fitness
Home Services
Health Care
Internet & Web Sites
Lawn/Garden/Landscape
Legal Services
Livestock-Services
Miscellaneous Services
Music
Painting
Photography

REMODELING

Power Washing
Remodeling
Roofing
Signs & Lettering
Storage Units
Stump Root Removal
Taxidermy
Transportation-Services
Tree Service
Welding
Help Wanted
Accounting-EMP
Agriculture
Cashier
Cleaning/Janitor
Clerical
Child/Elderly Care-EMP
Computer Tech
Construction-EMP
Education
Electrical/Plumbing-EMP
Hotels/Restaurants
Industry
Work Wanted
Maintenance
Management
Mechanic
Medical/Dental
Miscellaneous EMP
Opportunities/Training
Professional
Retail

EMPLOYMENT

Sales
Seasonal
Transportation/Driv-
ers-EMP
Welders
Employment Online Only
FINANCIAL
Business Opportunities
Insurance & Savings
Investments
Loans
Services

REAL ESTATE

Homes For Rent
Mobile Homes For Rent
Office/Commercial
Rentals
Other-RE Rental
Recreational For Rent
Roommates Wanted
Wanted Rentals

REAL ESTATE SALES

Homes For Sale
Mobile Homes For Sale
Acreages & Lots-Sales
Recreational For Sale
Business Property
Condos/Townhouses-Sales
Foreclosures
Homes For Sale By Owner
Investment Property
Other-RE Sales
Wanted For Sale

REAL ESTATE RENTALS

Acreages & Lots-Rental
Apartments
Condos/Townhouses-Rental
Duplexes
YS-Surrounding Counties

Homes For Rent
Mobile Homes For Rent
Office/Commercial
Rentals
Other-RE Rental
Recreational For Rent
Roommates Wanted
Wanted Rentals

RECREATION

Accessories-Recreation
ATV's
Boats & Motors
Campers & Trailers
Motorcycles
Other-Recreation
Parts & Services-Re-
creation
Wanted-Recreation

TRANSPORTATION

Automobiles
Trucks, 4x4's, SUV'S
Accessories-Transporta-
tion
Aircraft
Antiques & Classics
Commercial Vehicles
Heavy Equipment
Parts & Services-Trans-
portatio
Vans & Buses
Wanted-Transportation

AUCTIONS & ESTATE SALES

Auction Sales
Auction Reminders
Service Directory

B Section

AGRI-BUSINESS

Metal Buildings
Equipment & Supplies

Cattle
Farms & Acreage
Hay/Feed/Seed
Horses & Mules
Livestock-AGRI

YARD SALES

Land/Pasture
Farmers Market
YS-Garage Sale

A Section Index

MERCHANDISE.....Page 02
Miscellaneous MERCH.....Page 02
Building Supplies.....Page 06
Sports Equipment.....Page 06
Wanted-Merchandise.....Page 06
Pets & Supplies.....Page 06
Flea Markets.....Page 04
Wood & Accessories.....Page 06
SERVICES.....Page 05
Computer.....Page 06
Construction-Services.....Page 05
Miscellaneous Services.....Page 11
Music.....Page 06
Remodeling.....Page 06
Tree Service.....Page 07
EMPLOYMENT.....Page 07
Construction-EMP.....Page 07
Miscellaneous EMP.....Page 07
Transportation/
Drivers-EMP.....Page 07
REAL ESTATE SALES...Page 07
Homes For Sale.....Page 09
Mobile Homes For Sale.....Page 07
Acreages & Lots-Sales.....Page 07
Homes For Sale
By Owner.....Page 09
Other-RE Sales.....Page 09
RECREATION.....Page 09
Boats & Motors.....Page 09
Campers & Trailers.....Page 09
Motorcycles.....Page 09
TRANSPORTATION....Page 09
Automobiles.....Page 09
Trucks, 4x4's, SUV'S.....Page 09
Commercial Vehicles.....Page 09
Heavy Equipment.....Page 11

BOOK NOW FOR SPRING • BOOK NOW FOR SPRING • BOOK NOW FOR SPRING •

GARAGES & MORE

Licensed • Bonded • Insured
Servicing Missouri, Oklahoma, & Kansas

24x50x9

- (2) 10x8 Overhead Doors
- (1) Entry Door
- 4" Reinforced Concrete Floor

Only \$23,747*
*Travel and taxes may apply. Price subject to change due to rising materials cost.

- 29 Gauge Metal
- 40 Year Paint
- 22 Colors
- Engineered Trusses
- Treated Square Posts
- Reinforced Concrete Floor

www.garagesandmoreonline.com

Windows & doors can be added to these Packages.
We no longer build in ARKANSAS

Jonathan • 417-455-4633 **Marcus • 417-455-3412**

BOOK NOW FOR SPRING • BOOK NOW FOR SPRING • BOOK NOW FOR SPRING •

Miscellaneous

4th ANNUAL NORTHEAST OKLAHOMA COIN SHOW

New Location!
COX BUSINESS CENTER
PEPSI EXHIBIT HALL A
100 Civic Center
Tulsa, OK 74103
Just 9 minutes from
Tulsa Airport!!

June 29th, 30th, July 1st
Home of the Youtube
Meet & Greet!
Thurs. 8am-noon FOR
dealers setup
and early birds.

Thurs. noon-5pm
Fri. 9am-5pm
Sat. 9am-4pm
For Info: Mike Boyer
918-787-2646
Sponsored By:
Mid America Coins Inc.

Midwest STORM SHELTERS

JOPLIN, MISSOURI
midweststormshelters.net.
0% Financing
available to 12 months.
ATSA CERTIFIED storm shel-
ters. 10 year warranty.
Picked up Concrete units
starting at \$3100 Packages
with installation starting at
\$4250. Includes taxes and
digging. Steel Safe Rooms
starting at \$3755 +tax instal-
led. Serving the entire
4-State area and beyond for
18 years. See us at 12423
Hwy. 59, Neosho MO
417-781-9718

Coin, Stamp, Post Cards, Sports Cards, COLLECTIBLE SHOW.
Carthage Memorial Hall,
Saturday, July 15.
9am-5pm.
Free admission!
417-682-4500.

FAIRVIEW DISCOUNT
Groceries and More

Mon, Tue, Wed, Fri..... 8AM -5PM
Saturday..... 9AM-3PM
Closed Thursday & Sunday

Amos Yoder
31536 Palm Rd.
Fairview, MO
417-632-0901

Miscellaneous

LOOK!

OVER 600 FISHING LURES!
Huge Yard Sale
Fri., June 23 and
Sat. June 24
8am
6473 Wood St.,
Racine, MO.
Rods; tackle boxes; other
fishing; tools; solid
oak dresser; antique
school desk; too much to
mention!

Miscellaneous

LOOK

KRATOM JOPLIN is a
small local owned kra-
tom/Cbd shop. We do
things better by bringing
fresh, quality kratom di-
rect from the rainforest.
Come try the best and
see why experience mat-
ters. 1806 N. East Street,
Webb City, MO. 64870.
417-317-4249.
www.kratomjoplin.com

GOT OLD BATTERIES LYING AROUND? TURN THEM INTO CASH!
Lead acid vehicle batteries

CALL FOR PRICING!

CASH FOR BATTERIES

Battery Outfitters
YOUR NEIGHBORHOOD BATTERY STORE

Rogers, AR • 479-631-2346
Joplin, MO • 417-624-2421
Golden, MO • 417-271-3801
Springfield, MO • 417-889-5245

HOUSE AND FARM Supply.com

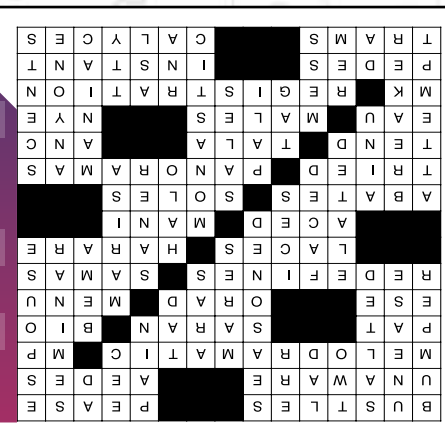
We sell just about everything for
your House, Farm & Outdoor life!

www.HouseAndFarmSupply.com

- Spend \$20 Get \$10 OFF use code: "ten"
- Spend \$40 Get \$20 OFF use code: "twenty"
- Spend \$100 Get \$50 OFF use code: "fifty"

BIG NICKEL BRAIN GAMES

-CROSSWORD- PUZZLE - JUNE - WEEK 4



CRYPTO FUN

Determine the code to reveal the answer!

- Solve the code to discover words related to headaches. Each number corresponds to a letter. (Hint: 6 = A)
- A. 25 6 3 18**
Clue: Uncomfortable feeling
 - B. 10 15 6 20**
Clue: Top of body
 - C. 6 26 23 6**
Clue: Sensory stimulus
 - D. 23 15 14 3 15 4**
Clue: Freed from symptoms

WORD SCRAMBLE

Rearrange the letters to spell something pertaining to headaches.

ORISSUE

--	--	--	--	--	--	--	--

Answers: Serous

Fun By The Numbers

			8	9	4	2		
		6					9	
1			2			3	7	
2				5			3	
				3	7		8	
6		1			7	9		
			6					
		7			1	6		
9								

Level: Intermediate

Like puzzles? Then you'll love sudoku. This mind-bending puzzle will have you hooked from the moment you square off, so sharpen your pencil and put your sudoku savvy to the test!

Here's How It Works:
Sudoku puzzles are formatted as a 9x9 grid, broken down into nine 3x3 boxes. To solve a sudoku, the numbers 1 through 9 must fill each row, column and box. Each number can appear only once in each row, column and box. You can figure out the order in which the numbers will appear by using the numeric clues already provided in the boxes. The more numbers you name, the easier it gets to solve the puzzle!

-PUZZLE- SODOKU - JUNE - WEEK 4

7	2	1	8	4	3	9	6	9
6	9	1	6	8	8	3	4	7
8	1	2	2	7	9	5	4	4
3	6	1	4	8	7	9	5	2
5	9	4	1	3	2	7	6	8
2	7	8	9	6	5	4	3	1
1	8	9	2	5	6	3	7	4
4	2	6	7	1	3	8	9	5
7	5	3	8	9	4	2	1	6

ANSWER:

CLUES ACROSS

1. Excited movements
8. Soap opera actress Patsy
13. Unknowing
14. Dangerous mosquitos
15. Exaggerated and sensationalized
19. Military policeman
20. Touch softly
21. Wrap
22. A story of one's life
23. Midway between east and southeast
24. Toward the mouth or oral region
25. A list of dishes available at a restaurant
26. Changes the meaning of
30. Semitic Sun god
31. Sneaker parts
32. Capital of Zimbabwe
33. Breezed through
34. Partner to pedi
35. Becomes less intense
38. Bottoms
39. Tested
40. Vistas
44. Take care of
45. Traditional rhythmic pattern
46. S. African political party
47. Cologne
48. Men
49. The Science Guy
50. Gospel author (abbr.)
51. Act of signing up
55. Human feet
57. A very short time
58. Streetcars
59. Cuplike cavities

CLUES DOWN

1. A type of pool
2. Malaise
3. Seasoned
4. A pair
5. Young male
6. Make a mistake
7. Experienced
8. It often accompanies injury
9. Old world, new
10. Commercial
11. Course of lectures
12. Promote
16. Female horses
17. Greek mythological figure
18. Small amount
22. Orthodox church altar
25. Actress Tomei
27. Excited
28. Looked directly at
29. Popular cold desserts
30. More reasonable
32. Disk above the head of a saint
34. Devoted to the extreme
35. Make an effort
36. It's in the surf
37. Member of aboriginal people of Japan
38. Discounts
40. Cliff in Hawaii
41. Extremely wild person
42. All persons
43. Aromas
45. Popular kids' game
48. A difficult situation
51. Popular Georgia rockers
52. It's in all living cells
53. Unspoken language
54. "Talk to you" abbreviation
56. Influential lawyer

-WORD- SEARCH - JUNE - WEEK 4

1	2	3	4	5	6	7		8	9	10	11	12	
13								14					
15							16	17	18			19	
20						21					22		
23						24				25			
26			27	28	29				30				
			31					32					
			33					34					
35	36	37					38						
39						40					41	42	43
44						45					46		
47						48						49	
50									52	53	54		
55		56							57				
58									59				

HEADACHE RELIEF WORD SEARCH

Y	T	E	E	L	E	T	S	F	M	R	P	E	R	Y	N	I	E	S	L	
N	A	Y	T	L	R	R	F	L	V	F	L	S	R	L	R	T	G	I	T	A
A	D	S	R	A	N	G	D	P	A	I	N	F	U	L	O	R	P	L	L	
N	N	B	O	M	B	G	Y	P	V	E	F	E	E	N	O	Y	B	U	L	
T	E	I	Y	V	C	E	R	P	V	F	T	A	B	B	H	R	I	N	N	
E	C	N	T	R	H	R	C	E	P	N	I	A	G	B	H	A	D	O	E	
P	Y	Y	F	U	A	S	S	D	M	P	I	E	Y	E	M	C	I	S	S	
D	S	R	T	L	D	D	V	S	D	N	E	E	S	A	I	O	T	S	L	
E	A	M	E	I	A	A	N	E	R	G	P	P	T	A	D	R	V	S	L	
H	Y	I	A	L	V	M	T	O	I	L	G	P	I	N	R	A	P	F	E	N
Y	U	G	I	C	Y	I	M	N	C	I	F	P	E	R	C	I	N	G	V	
D	S	R	A	G	T	H	T	A	E	E	R	B	D	L	H	V	V	N	H	
R	T	A	G	E	S	R	S	I	T	T	S	E	N	P	E	C	V	O	N	
A	D	I	P	N	O	I	O	E	S	I	S	I	T	E	C	S	I	C	S	
T	O	N	Y	S	B	E	G	N	F	I	O	I	V	S	D	F	S	V	S	
I	C	E	T	I	S	Y	D	P	I	E	N	S	V	U	D	R	L	E		
O	T	G	H	O	C	T	R	H	L	C	L	S	H	R	A	L	U	M	R	
N	O	M	U	N	E	C	P	N	A	P	A	O	T	L	E	N	C	S	T	
G	R	A	D	U	A	L	G	U	L	G	T	G	A	N	N	P	C	S	S	

Find the words hidden vertically, horizontally, diagonally, and backwards.

WORDS

- CHRONIC
- CLUSTER
- CONGESTION
- DEHYDRATION
- DIAGNOSIS
- DOCTOR
- GRADUAL
- HEADACHE
- ILLNESS
- INFLAMMATION
- LIFESTYLE
- MIGRAINE
- PAINFUL
- PERSISTENT
- PRIMARY
- SECONDARY
- SENSITIVITY
- SHARP
- SPINE
- STRESS
- SUDDEN
- TENSION
- THROBING
- TRIGGERS

HARDWOOD PRATER PRODUCTS
EST. 1903

6 GENERATIONS SINCE 1903
918-919-9764

WE ARE BUYING

STANDING TIMBER and CUT LOGS!

PAYING GREAT PRICES on WALNUT, ASH, WHITE OAK, And many other species!

BUDGET BOX

MOBILE STORAGE

WWW.BBCONTAINER.COM

417-782-7788



Dry, Secure, & Rodent Tight!!

5745 Hwy 43, Joplin, MO
(1 1/4 mi south of Petro on Hwy 43)

Storage Container Sales & Modifications



MERCHANDISE

Wood & Accessories

CLINT RENNER LOGGING
Specializing in Walnut, oak and ash. Guaranteed bids, will pile brush, top prices paid. Don't sell too cheap! Honest, Reputable, 3rd generation logger. Call today for free estimate. **417-439-7954.**

Advertise your specialty in the Big Nickel Service Directory. Runs every week! Call Grace for special pricing and more information. **417-624-4100.**

NEW LOWER PRICES!



DISPENSARY

EXTRAORDINAIRE:

Large selection of flower, concentrates, edibles and bath and body products.



ALL DAY, EVERY DAY!

Bold \$10.00

Special \$11.00

Ice \$12.00

Sugar \$13.00

REWARD POINTS PROGRAM!

EVERYDAY SPECIALS

HIGH NOON SPECIAL: ANY Pre-Roll (Large selection) for 50% off (one per patient) 11:30AM-12:30PM daily. (Ruby Mae's Excluded)

420 SPECIAL Any Pre-Roll (large selection) 50% Off (one per patient) from 4:20pm to 5:20pm daily. (Ruby Mae's Excluded)

FIRST TIME PATIENTS RECEIVE 20% OFF

NO CARD NEEDED TO VISIT!
CARD ONLY NECESSARY TO SEE DISPENSARY.

In Historic Downtown Grove
21 W 3rd St.
Grove, OK 74344
918-791-3420
www.420releaf.com

420_Releaf_Dispensary
420 Releaf Dispensary

RANCH TIME ACCESSORIES

LOOK GREAT FOR LESS...

- ★ CUSTOM HATS
- ★ HAND MADE BOOTS
- ★ WILD RAGS
- ★ WESTERN DECOR
- ★ COWHIDES & GIFTS
- ★ PURSES & WALLETS

MALL LOCATIONS: NORTHPARK, JOPLIN Open Mall Hours
BATTLEFIELD, SPRINGFIELD
NWA MALL, FAYETTEVILLE **417-635-7777**

Miscellaneous

EARLY DEADLINE in Observance of Independence Day

Display Ads (including Auctions) will deadline **Wed. June 28 at noon.** Any questions, please contact your sales representative.

Classified line ad deadlines:
Friday, June 30
B section-10 am
A, Misc. and Veh: 3pm

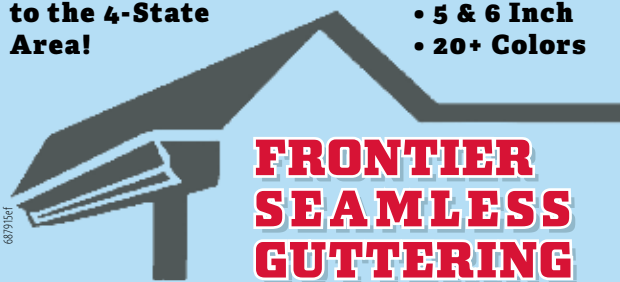
LOOK!

ROCKY-MART, LLC
Your local General Store. Prices range from \$1 on up.
21841 E. Hwy. 76.
Rocky Comfort, MO.
Call 417-652-3538
or 417-847-7518

CALL ABOUT our classified ad specials. **417-624-4100.**

Offering Quality Service to the 4-State Area!

- Residential
- Commercial
- 5 & 6 Inch
- 20+ Colors



FRONTIER SEAMLESS GUTTERING

Laramie Miller, Mgr.

918-791-4271 • millerlaramie@gmail.com

Miscellaneous

SOUTHWEST CONTRACTORS
YOUR LOCAL metal roofing contractor. Various colors available. Free estimates. General construction. **417-434-3266.**

RUSTIC CIRCLE CUT wood flooring, tongue & groove, 3"-6" wide, mixed oak.
Chapman Sawmill
417-438-5507.

New Super Charger for Ford 5.4, complete with throttle body and various parts, \$2000; 67 Mustang 4 speed top loader, (2) bell housings and flywheel, \$400. **918-226-0170.**

WANTED: (40+) acre cattle farm to lease/ purchase within 20 miles of Carthage **417-388-2650;** Also mowing lawns, loading/unloading hauls.

IF YOU MISSED the first ad, I'm still looking for a Ford flathead motor, 1949-53. Call **417-624-6831.**

Miscellaneous

12.4x38 Tractor tires and wheels; used 16' USA wire cattle panels, \$22.50 each; used 6' and 7' steel posts. **918-533-3871.**

SOLAR PANELS, electrical box, box with railings, 16 panels. Asking \$1750. Contact John **417-392-7708.**

PLEASE PLACE your classified ads on The Big NICKEL website. Our web address is www.bignickel.com

D&D LOGGING

BUYING ALL TYPES OF STANDING TIMBER
Walnut • Oak
Ash • Etc.

Anthony Gruver
417-437-9633



6 GENERATIONS SINCE 1903

Buying standing timber and cut logs. Great prices on walnut, ash, white oak, and many other species.

Call **918-919-9764**

JOSH HARTNESS LOGGING

BUYING MOST SPECIES OF STANDING TIMBER



620-212-0896

MARKETS ARE GOOD ON BURR OAK, ASH & WALNUT
FREE ESTIMATES • 25 YEARS EXPERIENCE

CHESHIRE LOGGING

BUYING STANDING TIMBER

- Specializing in Walnut •
- Top Prices Paid •

References Available
BRENNON CHESHIRE

417-540-0421

GUN SHOW

SATURDAY, JUNE 24TH 9AM -5PM
SUNDAY, JUNE 25TH 9AM - 3PM

OZARK EMPIRE FAIRGROUNDS
3001 N. GRANT AVE., SPRINGFIELD, MO 65803

RK SHOWS FOR MORE INFO:
RKSHOWS.COM





SERVICE DIRECTORY

To Advertise your service or business in this special section

\$40⁰⁰
A Month

Call Grace: 417-624-4100

ASPHALT SEAL COATING

3S ASPHALT CONSTRUCTION

- Seal Chip • Asphalt Paving
 - Baserock-machine laid
- 417-317-7448 or 417-297-8362

SIMON'S ASPHALT, MAINTENANCE & SEALING

Seal coating, hot rubber crack filling, asphalt & Paving, CHIP & SEAL. Free Estimates, 7 days a week availability on jobs. Serving the 4-State area. 417-291-0727

CABINETRY & WOODWORK

Cabinets for every room, made to order. Custom kitchen cabinets, quality craftsmanship. Also rebuilding cabinets. Home office cabinetry, Custom made computer desks. Give me your ideas and I can make it work for you!! 516-624-0470

CARPET CLEANING

FICARELLAS' Upholstery & Carpet CLEANING SERVICE

Over 40 years experience. FREE ESTIMATES for Commercial & Residential Services, Deep Down Extraction Steam Cleaning, Bonnet Buffing/Encapsulation/VLM, Carpet Deodorization, Hard Surface, Floor & Upholstery. References Available

Professional work is backed by our guarantee. Dan Ficarella 620-778-6632 or 417-208-7251 Facebook & Instagram

CONCRETE

4-STATES CONCRETE

Concrete flatwork includes shop floors, driveways, patios, decorative, infloor heat.

LEROY YODER

620-762-0132 or 620-238-7180.

CONCRETE WORK

Message for a free estimate. Driveways, sidewalks, slabs, pole barns.

Benny's Concrete • 417-389-0160

CONSTRUCTION & HOME IMP.

GRUMPY GRANDPA

HANDY MAN SERVICE

Insured and Bonded.

417-793-4078

PROFESSIONAL FLOOR LEVELING, AND JOIST REPLACEMENT.

Licensed, Bonded, Insured.

417-439-5717 • 417-438-0864

D&M CONSTRUCTION & REMODELING, LLC.

Specializing in doors, windows, & siding, all types of carpentry. Metal roofing. Licensed, Bonded & Insured.

Dave McElhaney

417-483-4113

PROFESSIONAL REMODELING & BUILDING.

Garages, Shops, Room Additions, Bathroom Add-Ons.

Prices to fit your pocketbook!

Licensed, Bonded, Insured.

417-439-5717 • 417-438-0864

HANDYMAN IVAN JOSIP

Handyman Services Joplin And Surrounding Areas. From "To Do" list to "Job Done" with just one call! 417-396-4689.

SUNBURST SERVICES HANDY MAN

Repairs, Carpentry, Drywall, Doors, Installs, Plumbing, Painting, Pick Lists, Fixes, Electrical, Windows, Honey-do's, Do Overs, and more. Small Jobs Welcome. 417-324-4073.

DRYWALL REPAIR

CRAIG'S DRYWALL REPAIR

Do you have cracks in your ceilings or walls?
• Can Repair • Popcorn removal • Retexturing
• Loose tape joints • Ceiling stains
• Mold removal. Same day, same service. Insured, Free Estimates. 5 Star Rating. M-F 7am-5pm, Sat. 8am-Noon Serving the Joplin/Springfield area for over 40 years. 417-430-9544

ELECTRICIAN

SPRINGFIELD LICENSED MASTER ELECTRICIAN

I will Install, Repair and Maintain all of your electrical needs with strict compliance of the NEC. Professional and reliable services. New circuits; security cameras; outbuilding circuits; wired smoke detectors; service repairs; ceiling fans; etc. Service area within 30 miles of Republic, MO. Phillip 417-413-6963.

ESTATE SALES

JUST GET ORGANIZED! SERVICES WE OFFER!

- *Organize, set-up, and hold sales. *Downsizing
 - *Moving *Estate (Residential & Commercial) homes and small and medium farms.
 - *Clean up property. *Haul off unwanted items.
 - *Help prepare home/property for sale.
 - *Advise on staging home for sale. *Pack for moves.
 - *Buying gold and silver (jewelry, flatware, coins) Serving the area for 15 years.
- Large following of buyers to our sales. Just Get Organized! Free Estimates. Suzanne 417-825-7003

EXCAVATING

DUMP TRUCK Services, black dirt, creek rock, Skid steer work, Land clearing, Bush Hogging, Pads & Driveways. Donnie 417-291-8916.

TICE EXCAVATION LLC

Prep for water/sewer lines, Land prep for buildings, roads, Land Clearing, Brush Removal, Ponds Seneca, MO 417-592-4636 • Tim Tice- owner

MARK LOTT'S EXCAVATING

All types of dirt work services. Land Clearing, Pond clean out, foundations, pads, driveways, roads, demolition, sit preparation. Dump Truck, Skidsteer, Excavator, tractor services available. 703-625-4545 or 417-434-0585.

HAULING

HAUL AWAY SERVICES

Junk; Rubbish; Furniture; Appliances; Debris; Garage/Yard items.

JUST GET ORGANIZED!

417-825-7003

Serving 4 State Area for 15 years.

HAULING

Black dirt, garden compost, fill dirt, mulch, Driveway limestone, river rock, asphalt, skid steer work. Weekend delivery available. 417-291-0727

LAWN & GARDEN

FIRE PITS, OUTDOOR KITCHENS & PATIOS, AERATION, HYDRO-SEEDING & SODDING.

Irrigation, installation, & repair. Retaining walls, sandstone patios & flowerbeds. Full service lawn, landscape and lawn care. Free Estimates. Licensed, Bonded & Insured. R&D LAWN CARE & LANDSCAPING 417-438-6590

ORGANIZING

TOO MUCH STUFF?

We Buy Most Anything. Estates/full or partial. Appliances; furniture; patio; outdoor items; tools; jewelry, gold, silver items; (We also do Estate Sales). JUST GET ORGANIZED 417-825-7003 Suzanne

MOVING SERVICES

Expert Furniture Moving 3 Men & 26' Truck Hourly or Flat Rate w/Quote. Professional, Licensed & Insured. SCOUT PRODUCTS LLC 417-673-7777

PAINTING

INTERIOR DECORATORS ROB & CATHY FEATHER

Husband & Wife Team 20+ Years Experience •Custom Painting; Wallpaper Install & Removal; Faux Finishes; Wood Graining; Murals & Art Designs; Home Repairs; Kitchen & Bath Cabinets; & Antiques Redone We Work With YOUR Budget! 479-212-3200

CALL or TEXT For your FREE Estimate & Color Consultation! All Work Guaranteed!

WOLVERINE PAINTING LLC

Interior/ Exterior

Residential/ Commercial. 33 years professional painting experience. Insured.

Call for free estimate.

541-295-7289 • Bob Conrad • Rogers, AR

PLUMBING & SEPTIC

ALL PURPOSE PLUMBING

Installing septic tanks and repairs. All of your plumbing needs. 417-235-5511.

ROOFING

RESIDENTIAL & COMMERCIAL METAL ROOFING & REROOFING.

Regular rib or standing seam. (Hidden fasteners). 40 year warranty. (22) colors. Satisfaction guaranteed! Servicing the 4-State Area! Free Estimates!

YODER CUSTOM CONSTRUCTION, LLC. 417-388-0613

MONTY'S ROOFING & CONSTRUCTION

Residential: •Roofing •Siding •Gutters •Storm Damage •Construction Commercial: •Roofing •Metal •Flat •Bituman Coatings. Over 30 years experience, Workers' Compensation 30 Year Leak/Labor Warranty Free Estimates, Insurance Claims, Special Discounts Licensed, Bonded, Insured www.montysroofing.com 417-438-0895

STUMP REMOVAL

TREE STUMP removal, fast, efficient, affordable. Free estimate. 417-623-5510, TERRY VREELAND

TREE SERVICE

PACIFIC TREE SERVICE

Owner: David Bratt 417-622-7963

*Licensed *Bonded * Insured

All Bids are Completely Free

Tree Trimming & Removal. Brush Cleanup.

All jobs big and small. We can handle them all!



Wood & Accessories

BUYING ALL
types of
standing timber.

LARGE or
SMALL Tracts

Nick Bradford
417-451-0820
417-825-4653

Building Supplies

AZAK BOARD:
(8) Each 3/4x12x20';
(10) each 3/4x8x20';
(4) each 3/4x4x20';
(3) each 3/4x4x10';
(2) each 1/2x4x10'.
620-421-5160.

Sports Equipment

CABLE CROSS OVER machine, like new, \$575; Smith machine, like new, \$500; leg extension machine, like new, \$300; Pec-dec machine, \$250; lots of weight plates, .50¢ a lb. each. 417-358-8061.

Wanted

WANTED
SMALL STOCK Water tanks with water in the side. 620-232-4718 or 620-638-4703.

Pets & Supplies

EARLY DEADLINE
in Observance of
Independence Day

Display Ads (including Auctions) will deadline **Wed. June 28 at noon.** Any questions, please contact your sales representative.

Classified line ad deadlines:
Friday, June 30
B section-10 am
A, Misc. and Veh: 3pm



8 WEEK OLD Teddy Bear Puppies, (4) males, all shots/deworming done, \$400 each. 417-508-9194.

CALL ABOUT our classified ad specials. 417-624-4100.

Pets & Supplies

MINIATURE GOLDEN DOODLES, will be small; Cavapoo puppies; Beagleier, under 10lbs, male and females; Blue Heelers; Standard Aussie male; Jack Russell puppies, will be small. All vaccinations and wormed for age. 417-880-0227. Call for pics.

TEACUP YORKIES, 2.5 lbs., 2 months, cinnamon with black trim, all shots, females \$600, males \$400. Dennis 417-839-7205 or 417-652-3425.

ADORABLE SMALL Pocket Beagle puppies, AKC papered, vet vaccines book, \$300, also some adult, call for pricing, home raised, around 10lbs. at maturity. 479-877-7878.

TOY AUSSIES, red tris, (2) males, (1) female, registered, shots and wormed. Ready now. 620-724-0087.

JACK RUSSELL PUPPIES. APRI registered, current on shots and worming, \$400 cash. Call or text 620-224-8773.

CORGI PUPPIES, red/white, (4) males, (1) female. Born 4/23/23. Shots, wormed, \$350 each. Call 417-592-5416 or 417-389-4419.

INDOOR female CAT, 2 years old free to good home. Text or call 479-799-3169 Fayetteville, AR.

Kittens ready for homes. Mother is great mouser. 816-548-9800.

Pets & Supplies

YORKIE PUPPIES!!! Small & adorable! ACA reg, S&W, tails and dewclaws done, \$500. For more info call 918-791-8970.

TOY YORKIE PUPPIES, \$500, traditional in color. 417-291-8635.

Multipoo/Skorie puppies, ready, 2 males, 2 females, shots/wormed. \$350. Text 417-499-0398.

1/4 AUSTRALIAN SHEPHERD, 3/4 Heeler puppies, 10 weeks, \$100 or best offer. 918-788-3330.

SERVICES

Computer

Microsoft Excel specialist. Basic data cleaning to advanced analytics. Flexible rates. Call Tim at 417-437-2947.

Remodeling

ATTENTION!
SANDS PLUMBING
And **REMODELING**
Over 40 years experience in all phases of home remodeling. 417-549-0804.

Tree Service

BUYING STANDING Timber. Top prices paid. Full residential service available. Call Josh St. Clair. 417-626-2120.

Construction-Services

BUILDINGS & ROOFING
Pole barns, shops, garages, metal roofing and siding, vinyl siding and repairs. 620-418-5630.

CALL ABOUT our classified ad specials. 417-624-4100.

H&M CONSTRUCTION
Cell: 417-262-2340 • Home: 417-682-4060

ALL TYPES RESIDENTIAL & COMMERCIAL BUILDINGS
Pole Barns • Shop Buildings • Horse Barns
Cattle Facilities • Shouse Buildings • Garages
Also Available in Red Iron Structures

YOU DREAM IT, WE BUILD IT!

31+ years experience Free Estimates

The - Shetler's JJ BUILDERS'S & EXCAVATING
Also Buyer of Standing Timber
Specializing In
Pole Barns, Houses, Horse Barns, Garages,
New Roofs: Metal or Shingle. All kinds of Concrete Work
Water Drainage, Landscaping, Building Sites,
Driveways & Much More!
Quality work at a lower price

John and Caroline Shetler
1185 Rt. E, Lockwood, MO
Call or text 417-205-8780

Construction-Services

RUSTIC CIRCLE CUT
wood flooring, tongue & groove, 3"-6" wide, mixed oak.
Chapman Sawmill
417-438-5507.

SOUTHWEST CONTRACTORS
YOUR LOCAL metal roofing contractor. Various colors available. Free estimates. General construction. 417-434-3266.

Miscellaneous

BRIAN'S HAULING SERVICE LLC
If it fits on 30' trailer I haul it!
Clean-out Properties. Mowing. 417-291-7941.

NEW AA MEETING in Granby, Missouri at the Community Building on North Main. Large stone building, big parking lot in front, glass double doors. Friday evenings at 6pm.

Miscellaneous

PAYING TOP Dollar for junk autos, small \$100/up, large up to \$300. No titles OK. 417-437-0605.

ROLL-OFF CONTAINERS FOR REMODELING, ROOFING, CLEAN UP.
Pittsburg, Joplin and surrounding areas.
Freddy Van's, Inc.
620-231-1127.

Miscellaneous

POULTRY HOUSE REMOVAL
We buy good quality chicken and turkey houses. Remove the houses and all deconstruction debris. Local professional crews. Serving since 1992.
Cedar Creek Contractors, LLC 785-217-3379.

WANT TO BUY MILITARY ITEMS
USA or FOREIGN * SINGLE PIECES OR COLLECTIONS
Medals - Helmets - Patches
Uniforms - Knives - Bayonets
Buying from WW I - Iraq/Afghanistan
Military Collectors Services
126 N. Webb • Webb City, MO • 417-850-0011
marionliles@yahoo.com

DENTAL CENTERS
Dr. Collins & Associates
General Dentistry
Located at:
MID-AMERICA DENTAL & HEARING CENTER

BASIC DENTURES \$195 Per Arch

MANY OF US TAKE BETTER CARE OF OUR EQUIPMENT THAN OURSELVES...

www.MidAmericaDental.com

Dr. Collins & Associates are Missouri licensed General Dentists. They are not licensed in Missouri as specialists in the advertised dental specialty of Prosthetics. Implants are a specialty area not recognized by the ADA that require no specific educational training to advertise this service.

JOIN OUR TEAM

ADVERTISING AND MARKETING SALESPERSON

Are you a people person looking for a new career opportunity? Big Nickel is looking for a full-time Advertising and Marketing Salesperson in the 4 states area.

Bring your resume to our office:
Big Nickel, 1931 E. 20th St., Suite 103, Joplin, MO

Our sales staff help current and prospective customers with their advertising and marketing needs. This is the chance for you to get creative, and help bring a clients vision to life. Knowledge of SE Kansas, NE Oklahoma, SW Missouri and/or NW Arkansas is a plus.

Our ideal candidate is self-motivated and independent, but also works well as part of a team. You need to be focused on developing new print and digital business as well as maintaining current customers. Organization and computer skills are important too. We expect enthusiastic, goal-driven people.

Applicants must have a valid driver's license with a good driving record and a reliable, insured vehicle in order to travel within your territory. No overnight travel is required.

Previous business sales experience or digital marketing knowledge is helpful but not required. We offer a base salary and commission.

Our benefits package includes vacation and sick time, health, dental, vision, life insurance, and reimbursed mileage.

~ The Test ~

What does your faith look like to the outside world when it is under pressure? Thank God for the opportunity for Him to be seen in you. Use the time to the max. Don't let anything rob your joy, especially for others to see.

Who is it that God is after that He needs for you to be around. Why does He need you? If God doesn't answer you the way you hope He will, can your faith remain in-tact? This is your testimony. Now how are you going to handle it? How does God get a better testimony if you give up or complain?

Have you ever wondered about your assignment in life? Thank God for His faithfulness in all the bad and in the good. What is it that God wants? Why has He chosen you for this experience? What might it be that He would be expecting from you in all of what is affecting your life this way?

When you don't understand God, can you still trust in who He is and what He knows? Can God trust you to walk with Him? How much will God's Kingdom benefit from your life?

There are many questions we have when we are faced with a situation we can't control. The scripture says "a person plans their ways but it is God who ordains their steps." How will you walk through the challenges you face in life?



Mark Taylor is the President of Sky High Broadcasting, as well as an author, columnist and speaker. You can contact him at mtaylor@kneo.org, or follow him on Twitter @kneo917



687148f

Listen Live at kneo.org

417-451-KNEO (5636)
10827 Hwy 86 East, Neosho, MO 64850

Miscellaneous

ATTENTION!

Buying all VEHICLES, TRACTORS, Farm Equipment, Classic Cars and Trucks. Everything on property. "Call me before you sell!" 417-830-4685.

A&B CDL COURSES

CLASS A CDL Entry Level Driver Training. Brink Engineering dba A&B CDL Courses now offering FMCSA Approved training in Verona, MO! Get your CDL in 4 days for only \$2000! Call today! 417-737-0897.

STORAGE UNITS, TWO SIZES OPEN, RV/BOAT PARKING ALSO AVAILABLE, IN NEOSHO, MO. (NEAR LOVE'S TRUCK STOP.) FOR PRICES AND SIZES, VISIT 86ministorage.com or call 417-621-1601.

EMPLOYMENT

Construction

Need hard working, not afraid of heights willing to learn. Install metal buildings and form concrete. Call 479-644-6336.

WWW.BIGNICKEL.COM

CEI CERTIFIED EXPRESS, INC. NEOSHO, MO

NOW HIRING SAFE, PROFESSIONAL DRIVERS

11817 Kentucky Rd., Neosho, MO
866-451-6162 EXT. 18
CEI-NWLL.COM

Miscellaneous

HELP WANTED: We have several hundred feet of steel farm corral fence that needs buffed/wiped/painted with 2 coats. We supply tools and material. Pay is \$1.20 per foot. Flexible hours, pay is straight pay/no withholding. 405-264-3936. ADMINISTRATION @4STATETRUCKS.COM

Transportation/Drivers

DRIVING JOB AVAILABLE.

We are a small family owned company, based out of Purdy MO, hauling grain and commodities throughout the 4 state area, MO, OK, AR and KS. We travel within a 300 mile radius. Drivers are home every weekend, leaving out Monday morning, returning Friday evening. We also have a few other dedicated freight lanes moving throughout the Midwest. We have later model trucks and trailers that are well maintained. Pay is based off of percentage, safety bonus at the end of year, paid vacation and paid holidays as well. Please call 417-442-3741.

Advertise your specialty in the Big Nickel Service Directory. Runs every week! Call Grace for special pricing and more information. 417-624-4100.

Transportation/Drivers

OTR ROUTES Days & Nights Available CDL-Class A, 2 years experience. CERTIFIED EXPRESS, INC. 866-451-6162, ext. 3

REAL ESTATE SALES

Homes For Sale

3 BEDROOM, 2 bath 2-story frame house, 1360 SF, in Joplin; has central gas heat/air, \$4400 down, \$746 per month. Owner finance 800-720-8503.

3 BEDROOM, 2 bath frame house in Joplin! Has central heat/air plus fenced yard. AS IS, \$3900 down, \$755 per month. Owner finance 800-720-8503.

CHECK OUT THIS PROPERTY IN AURORA! One acre with 3 bedroom, 1 bath frame house (abt. 1800 SF), \$4400 down, \$746 per month. Owner finance 800-720-8503.

GREAT LOCATION! 3 bedroom, 2 bath modular home on (1) acre; has central heat/air, spring-fed creek. Joplin. AS IS, \$3900 down, \$755 per month. Owner finance 800-720-8503.

IDEAL SMALL COTTAGE! 1 bedroom, 1 bath frame house in Joplin, \$2900 down, \$588 per month. Owner finance 800-720-8503.

JOPLIN- 3 bedroom, 1 bath frame house with new metal roof! \$3900 down, \$755 per month. Owner finance 800-720-8503.

JOPLIN- 3 bedroom, 1 bath home with central gas heat/air, (1050 SF), (2) outbuildings, \$4900 down, \$746 per month. Owner finance 800-720-8503.

LAMAR- 3 bedroom, 1 bath frame house with central heat/air, 1-car detached garage, \$4900 down, \$790 per month. Owner finance 800-720-8503.

SARCOXIE- 3 bedroom, 2 bath frame house (1200 SF) with metal roof and storm cellar, \$3900 down, \$834 per month. Owner finance 800-720-8503.

Homes For Sale

NEED 4 BEDROOMS? Check out this 4 bedroom, 1-1/2 bath in Joplin! 2050 SF, central gas heat/air, fireplace, basement. AS IS, \$5900 down, \$998 per month. Owner finance 800-720-8503.

STELLA, 3 bedroom, 2-1/2 bath, 1840 sq.ft., (6.1) acres, ranch frame house. Pictures and information mls 225829. Price reduced to \$289,000! 320-630-1794.

WEBB CITY- 3 bedroom, 1 bath frame house with central heat/air, fireplace, new metal roof in 2022, \$4900 down, \$921 per month. Owner finance 800-720-8503.

Acres & Lots-Sales

FOR SALE: Lake lot on Lake of the Ozarks, Osage Beach area. 417-793-3274 or 417-793-3247.

Acres & Lots-Sales

EXCELLENT CATTLE farm in McDonald County Missouri! Two nice farms with 90% rolling pastureland. First farm is (170) acres has 1/2 mile cattle water lines from spring, several ponds, newer cabin with solar, plus a nice mobile, \$883,000. Second farm is (153) acres with several springs, an acre stocked pond, corral, \$632,000. Both have new perimeter fencing. Call Christine Sanford 417-389-4142. Reece Nichols real estate office 417-389-4142.

NEED ACREAGE? (2) tracts totaling (16.18) acres in Anderson, \$4900 down, \$790 per month. Can add well and septic for additional charge. Owner finance 800-720-8503.

WWW.BIGNICKEL.COM

Acres & Lots-Sales

ATTENTION!

LAND IN McDonald County Missouri- Several Parcels available: Wooded land west of Anderson- (9.61) acres \$57,600. (42.7) acres \$170,800. (29.93) acres \$134,600. (29.08) acres \$130,800. Can be combined for larger parcel. Just 15 mins. from I-49 at Anderson, MO. Call Christine Sanford 417-389-4142, Reece Nichols Real Estate office 417-451-4155.

NEW LISTING- (82.4) acres in McDonald Co near South West City. Spectacular turnkey cattle farm. Call Tony Chrisco at Whitetail Properties Real Estate LLC 417-860-0259.

Need something? Let us help you. You can advertise that you are looking for a special item. Call 417-624-4100 for more information.

Town & Country

Real Estate & Auction Service
1700 W. Austin, Nevada • 417-667-2966

- 205 Acres, west of Lamar, MO Barton County..... SOLD AT AUCTION... \$7400 PER ACRE
- 314 Acres SOLD at Auction 5-20-23\$1,554,300
- 440 Acres, Vernon County, MO UNDER CONTRACT\$2,200,000
- 160 Acres \$4,400 per acre, Jasper County, MO..... SOLD
- 118 Acres, \$4,600 per acre, Jasper County, MO SOLD
- 244 Acres of Pasture in Vernon County Mo. fenced and cross-fenced . Access on 2 sides, 4 nice ponds will furnish plenty of water..... \$976,000
- 440 Acres, Vernon County Mo..SOLD AT AUCTION..\$1,910,000
- 1480 Acres, Vernon County Mo....SOLD.....\$7,000,000
- 120 Acres, Row Crop, Vernon County Mo..... SOLD..... \$660,000

WE ARE "SOLD OUT" & NEED LISTINGS! PLEASE CALL, IF YOU ARE THINKING OF SELLING! 417-488-9540

 DOUG WORTMAN 417-440-9540 Owner/Broker/Auctioneer	 JAY WORTMAN 417-365-4721 Agent	 TROY SCOTTEN 417-448-7153 Agent	 TAYLOR SCOTTEN 417-484-1224 Agent	 COLE ABELE 417-654-0881 Auctioneer
---	--	---	---	--

Homes For Sale By Owner

THINKING ABOUT SELLING YOUR LAND? I CAN HELP.

TONY CHRISCO
Southwest Missouri Land Specialist
417.860.0259
tony.chrisco@whitetailproperties.com

WHITETAIL PROPERTIES REAL ESTATE
HUNTING | RANCH | FARM | TIMBER
WHITETAILPROPERTIES.COM

Need Extra Cash?



Have you cut back on all the extras like going out to dinner or the movies?

Generate Some Extra Money For Your Pocket!

Now is the Time to Get Rid of Unused Items!

Clean Out The Garage!

Place Your Classified Ad in a 2nd, 3rd or 4th Additional Category for

1/2 Price!

HURRY- Special pricing is for a limited time only!



BIG NICKEL CLASSIFIED ORDER CALL 417-624-4100 OR FAX 417-621-0287

Name _____
 Address* _____ Phone _____
 City _____ State _____ Zip _____

Clip your ad and send it with payment to:

Big Nickel
PO Box 1567
Joplin, MO 64802
 Or e-mail us at:
classified@bignickel.com
 Place your ad online at
www.bignickel.com

*Required information when paying with credit card

Classification _____
 Amount From Form Below \$ _____
 Boxed (Add \$2.00) \$ _____
 Bold & Capitalize First 5 Words (Add \$2.00) \$ _____
 Graphic Options (circle choice) Add \$3 ea. Option \$ _____
 Super Graphic (Add \$5.00) \$ _____
 Include Email address (Add \$2) \$ _____
 Add a Picture (Add \$10) \$ _____
 Include URL (Add \$2) \$ _____



SEE MORE GRAPHIC OPTIONS ON INDEX

CLASSIFIED DEADLINES
AUCTIONS A SECTION
 Noon • Mon. 4pm • Mon.
B SECTION VEH SECTION
 Noon • Mon. 10am • Tues.

* Required on Help Wanted and OTR & Driver Opport. Classifications

100% Reverse [Boxed/Boldcaps] (Add \$5)
 Subtotal \$ _____
 # of Weeks Ad is to Run _____ x Subtotal= \$ _____

BOLD NAME, ADDRESS & PHONE ON COMMERCIAL ADS PRIVATE PARTY

				UP TO 15 WORDS	
				\$13.75	\$11.75
				\$14.75	\$12.75
				\$15.75	\$13.75

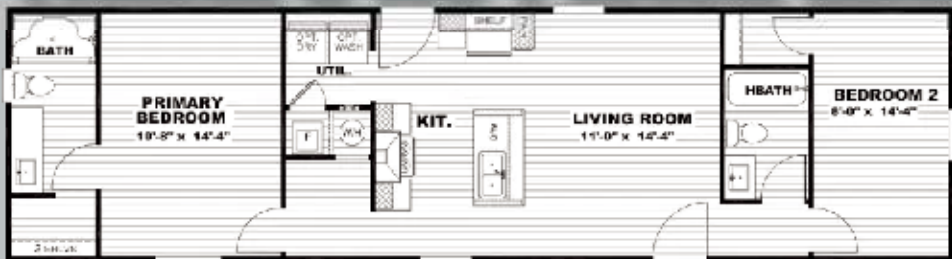
Credit Card No.* _____ CC Exp. Date* _____ 3 Digit Verification No.* _____

Payment by check authorizes the Big Nickel to electronically collect returned checks, plus \$25.00 Service Charge.

For other specials or to place your classified

Put the 4-state area distribution of the Big Nickel to Work for YOU!
 Call 417-624-4100 www.bignickel.com
 Fax: 417-621-0287 Email: classified@bignickel.com

THERE'S NO PLACE LIKE A NEW HOME!



NEW 16' WIDE 2 BEDROOM, 2 BATH

CHOICE OF CABINETS AVAILABLE

ONLY \$59,900

(Includes Delivery, Set-up, & Skirting)

BE THE FIRST TO OWN THIS BRAND NEW MODEL!



At I-49, Exit 27 (Loves), 1 Mile East on Hwy. 86, Neosho, MO

877-582-6767 • 417-451-6767

www.claytonhomesofneosho.com

M-F • 9am-6pm | Sat • 9am-5pm

TRANSPORTATION

Trucks, 4x4's, SUV's

CHEVY COLORADO, 2008, extended cab, 4x2, 4 cylinder automatic, air, very good condition, over \$3000 spent in new parts. If it was broke I fixed it! Repair receipts available, \$7650. 417-434-1950.

MERCEDES BENZ 350 SUV, 2011, white with camel interior, 140,000 miles. Excellent condition! \$9600. 417-308-7768.

Commercial Vehicles

1991 TIMPTE hopper trailer, good and straight with good tarp, tires, brakes and lights. Current DOT inspection, \$10,000 or best offer. 417-438-5638.

Acres & Lots-Sales

MCDONALD COUNTY Missouri land- (5) acres wooded land within 3 miles of I-49 at Anderson, MO. \$44,900. (40) acres part cleared and part wooded, highway frontage C-hwy Goodman, MO. \$195,000. Call Christine Sanford 417-389-4142, Reece Nichols office 417-451-4155.

RESIDENTIAL LOT, all utilities, cement drive, close to Spring River, possible access, \$7500 cash. 639 E. 6th Street, Baxter Springs, Kansas. 620-856-4406.

Mobile Homes For Sale

1 BEDROOM, 1 BATH- Cute one bedroom single-wide. Home has a small front porch. Newly renovated, new carpet. This home comes with kitchen appliances and an A/C unit. Gas home. Would make a great starter or lake house. Financing options available for most all credit scores. #1. www.hwy59discounthomes.com 417-451-2609.

3 BEDROOM CLAYTON. 3 bedroom, 2 bath, 16x80, single-wide. Newly renovated and ready for it's new owners. Financing options available for most credit scores. Give us a call today. #47 417-451-2609.

WWW.BIGNICKEL.COM

Other-RE Sales

Clayton Homes Joplin Joplin Super Center

"Largest Selection of Energy Smart Homes in the 4-State Area!"

Energy Smart Homes Will Save You \$\$\$

BEST HOMES • BEST PRICES

Customer Experience is our #1 Goal

Buy from the Proven Best!

5609 East 7th St. • Joplin, MO
417-553-9780
www.ClaytonHomesJoplin.com

Mobile Homes For Sale

COMMERCIAL OFFICE, (2) small offices, large open room, 2 bathrooms, kitchen and laundry room. Approximately 1350 sq.ft. will go fast! #12. 417-451-2609.

FREE DELIVERY. We've got a 4 bedroom, 2 bath, 16x84, ready to go! Newly renovated. New kitchen appliances and A/C. First 50 miles of delivery included in price. Take a look at www.hwy59discounthomes.com #9. Call for details. 417-451-2609.

WE need MOBILE HOMES! PAYING CASH TODAY! ALL YEARS, ALL SIZES. CALL 417-455-0200.

RECREATION

Boats & Motors

1993 BAJA 33' SPEED BOAT, rebuilt 454 V-8 engine, 4-barrel carburetors, cabin, no fridge, triple axle trailer, MINT/SHEDED! Half price of new! Wichita-316-772-5057 Anytime.

Campers & Trailers

2019 SURVEYOR Travel Trailer **SOLD** x8', model M-251RKS, double axle, power awning and electric leveling jacks, half ton towable, lightly used, sleeps 6, one owner, \$19,900. 918-541-7817.

RECREATION

Campers & Trailers



2016 CLASSIC MOTORHOME, Forest River 3, 26', 18,000 miles. Great shape, \$55,000 or best offer. 417-230-2500 or 417-230-1535.

GRAND COUNTRY Lake-side RV Park. Daily, weekly, monthly, annual. Adult park (over 55). On Grand Lake. Space available. 918-257-1959.

2001 21' RV TRAVEL TRAILER. 5th wheel hitch. Good shape. \$3000. Chelsea, OK. Ask for Peter. (918) 697-0803.

HAVING A garage sale or rummage sale? Call us for special pricing. 417-624-4100.

RECREATION

Motorcycles

NIGHTWIND CYCLES 1004 Walnut, Lamar, MO. Reasonable rates. Motorcycle inspection station. **BIG SALE ON ROADKILL T-SHIRTS-\$5 EACH!** Now have full line of biker apparel and gear! Also Billiard supplies! Year round gift certificates. Now accepting credit cards. Call for appointment 417-682-3733.

TRANSPORTATION

Automobiles

SELLING SEVERAL VEHICLES: 2019 flatbed trailer; 94 Ford tow truck; 2011 Ford extended cab, HD; 04 Nissan Murano. More! 417-983-2948.

BE AN EARLY BIRD! Place your ads before Monday and beat the rush!

2014 RAM 3500 SLT CREWCAB 4X4

6.7L L6, TURBO DIESEL, LWB, 4X4 DRW, ONLY 149K MILES! THIS BAD BOY HAS IT ALL!! SEE OUR WEBSITE FOR MORE PICTS!

Only \$39,995

Burr Motor Co.
639 W. Coler, Neosho, MO
417-451-1029
www.burrmotorcompany.com

Trucks, 4x4's, SUV's

2007 CHEVY 3/4 ton 4WD, under 77,000 original miles, flatbed, \$12,500; 2002 Chevy 2500 HD Silverado, 4x4, \$2500. 620-249-3512.

NEED TO SELL YOUR HOUSE OR PROPERTY? Get the best coverage around. Call the Big Nickel and our helpful representatives will assist you in creating your ad. You can even pay over the phone. Call 417-624-4100.

DO YOU LIKE YOUR PICKUP, SUV, OR CAR?

Spring has Sprung!
Get your vehicle ready for those fun days of Summer driving!

Let's Get Er Done!



Used vehicles are at an all time high price. Why trade yours in when **DYN-A-TECH** can put new life into yours with a remanufactured engine?

WE ARE YOUR PICKUP & SUV HEADQUARTERS!

1 YR. UNLIMITED MILES PARTS & LABOR WARRANTY

WE DO BETTER THAN OUR COMPETITOR FOR LESS \$\$\$

DYN-A-TECH IN THE SAME LOCATION FOR 36 YEARS
ENGINE REBUILDERS **620-783-5041** (6 Miles West of Joplin on 7th St.)
724 W. 7th • Galena, KS

Wouldn't it be awesome if you could track the results you were getting from your TV advertising?

We can do that!

Streaming TV Options
from The Big Nickel.



CONTACT A Sales Representative at 417-624-4100 TODAY to get started!



BIG NICKEL

New and improved Big Nickel website WWW.BIGNICKEL.COM

- E-edition
- Interactive Auction page with calendar, directory and auction ads
- Fresh and relevant editorial content
- Direct links to advertisers' websites.
- Marketplace of advertisers with each week's ads, as well as expanded listings with hours, directions and business highlights for featured advertisers.
- All ads organized by category on one page
- Exciting promotions and enter to win contests!
- Business and reader spotlights!
- Location finder for picking up a paper copy of the Big Nickel!
- Self-service classified liner ad purchases

For questions or to place an ad, call:

417-624-4100

TRANSPORTATION

Heavy Equipment

1982 GMC 7000 bucket/chipper box/ dump truck, 3 in 1, 50' boom, 366 motor, with under original 45,000 miles, \$10,000. 620-249-3512.



EQUIPMENT UNLIMITED, INC
TRUCKS & SALES

WE BUY AND SELL:
Dozers; backhoes; skid-steers; dump trucks; bucket trucks; semis; trailers of all sizes; fork-lifts; various quick attachments.
Call Robert 918-801-3269.

FIND THE
RIGHT RIDE
FOR THE
RIGHT PRICE

Find the stuff you want. Sell the stuff you don't.
Save time and money with your local newspaper classifieds.



Miscellaneous

10% Buyers Premium
AUCTION FARM

FRIDAY, JUNE 23, 2023 - 3:00 P.M.

LOCATION: 16325 HESTON RD SULPHUR SPRINGS AR 72768



TRUCK / CARPORT

1981 FORD CUSTOM F150, STANDARD TRUCK W/ 4X4 60,182K MILES HAS HYDRAULIC HAY SPIKE
(2) 20'X16' CAR PORT'S

PANELS / CHUTE / FENCING

OVER (100) 12FT X 6FT HEAVY DUTY SQUARE TUBE CATTLE PANELS
(6) 16 FT PANELS
W W SQUEEZE CHUTE W/HEAD GATE AND PALPATION ENTRANCE
W W 20' HEAVY DUTY CATTLE SWEEP
W W ADJUSTABLE ALLEY WAY MADE UP OF (2) 8FT SECTIONS
SEVERAL GATES FROM 4FT -16FT
ROLL OF BARB WIRE
LIQUID MINERAL TANK



OVER (100) 8FT T POST WOODEN MINERAL FEEDER W/TOP 300 GALLON GALVANIZED STOCK TANK
(2) ELK RIVER CREEP FEEDERS
(4) CATTLE HAY RINGS

ANTIQUES / MISC

250 GALLON PROPANE TANK
2 FRIGIDAIRE CHEST FREEZERS
MAYTAG ELECTRIC DRYER
WHIRLPOOL REFRIGERATOR
5 PIECE ETHAN ALLEN QUEEN SIZE BEDROOM SET, DRESSER, CHEST OF DRAWERS, NIGHT STAND
5 PIECE ANTIQUE OAK DINETTE TABLE W/ CLAW FOOT ON CASTERS
ATLANTA SUPER FLAME GAS STOVE
TOMATOE CAGES

GALVANIZED DOUBLE BASIN WASH BIN ON STAND
GALVANIZED CHICKEN FEEDER
(2) NEW COLATTLE RUBS
LIVE TRAPS
CUTTING TORCH ON CART
6FT METAL VINTAGE CABINET
KING WOOD BURNER SHOP STOVE
6FT ANTIQUE WHIRL WIND FAN ON PEDESTAL
LARGE GALVINIZED WASH BIN
(3) 14 HEN LAYING BOXES
ANTIQU MILK CANS
CHARBROIL GRILL/SMOKER
ANTIQU HAY GRAPPLE
1960S 14FT V BOTTOM ALIUMIUM BOAT, W/SEA KING ENGINE

HONEY CREEK ANGUS FARM

AUCTIONEERS NOTE : BILL SELBY, OUT OF STATE OWNER SOLD FARM THAT HAS BEEN IN THE FAMILY FOR MANY YEARS. 10% BUYERS PREMIUM ANNOUNCEMENTS MADE DAY OF AUCTION, SUPERCEDES ANY PRINTED MATERIAL.

AUCTION CONDUCTED BY

DWAYNE CRAIG AUCTION SERVICE

479-957-3965

Gravette, Arkansas
AALB #5

AUCTIONZIP.COM #27181

630272 JP

There's a better way to get noticed.
Keep life simple. Take out an ad.

Remodeling

TICKETS ON SALE JUNE 27
MISSOURI STATE FAIR

AUG 10 TYLER HUBBARD OF FLORIDA GEORGIA LINE WITH PARMALEE \$45, \$50

AUG 11 LAINEY WILSON WITH JACKSON DEAN \$50, \$60

AUG 12 3 DOORS DOWN AWAY FROM THE SUN ANNIVERSARY TOUR WITH CANDLEBOX \$35, \$45

AUG 16 CORY ASBURY AND CAIN \$25, \$35

AUG 17 THE COUNTRY COMEBACK TOUR SHENANDOAH BILLY DEAN WADE HAYES \$20, \$30

AUG 18 NELLY WITH RAHZEL \$40, \$50

AUG 19 RILEY GREEN WITH RANDY HOUSER \$45, \$50

BUY TICKETS AT MOSTATEFAIR.COM, ETIX.COM OR 800-514-ETIX (3849)

SECURITY POLICY: For guest safety, prior to entering concerts/events at the State Fair Grandstand, all guests will be screened by hand-held wands, or similar device. Weapons are not permitted. All bags are subject to search. Any prohibited item must be returned to the guest's vehicle.

STRETCH
YOUR BUDGET WITH CLASSIFIED ADS!

Get money in your pocket and room in your garage when you sell your stuff and promote your sales in your local newspaper classifieds.

Want to reach potential customers when they are searching or reading articles on-line?

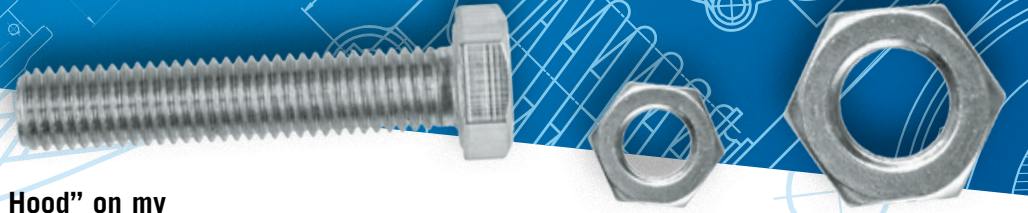
We can do that!

Keyword and Contextual Targeting
from The Big Nickel.

CONTACT A Sales Representative at 417-624-4100 TODAY to get started!

ASK THE MOTOR MEDICS®

Automotive Advice from the Under The Hood® Show



Dear Motor Medics,

I've been listening to your show "Under The Hood" on my local radio station and have heard a lot of talk about gasoline and changes that have happened to it over the years and some new ones coming that we have seen here locally involving octane changes. The fuel in our pumps has changed and we now have a lower octane rating than before. I have always just used the cheapest fuel when gassing up my car but after listening to you I wonder if I would be better served using something else. I heard you suggest the higher octane to a listener to prevent engine damage. Should I be worried about my car? I drive a 2006 Ford Taurus that's not a flex fuel vehicle.

Thank you,
David in Muskegon Michigan

Dear David,

Thanks for listening to Under The Hood and for reading the column. Fuel has changed and we are seeing a drop across the board in octane and prices all over the place. The first place to start is with your owner's manual because you want to know what the manufacturer of your car calls for. If they recommend a minimum 87 octane or 89 octane, then that is the lowest you should use to protect the vehicle. Using fuel with lower ratings than manufacturer recommended can cause spark knock which is potentially harmful to the engine and too high is a waste of money so always consult the car owner's manual.

Take care,
the Motor Medics

Dear Motor Medics,

I own a 2011 Chevy truck and car. They both have an oil change reminder light that tells me when the vehicle needs to be serviced. I have noticed that the time of service for these two vehicles can range up or down as many as 3000 miles on a change and frankly it worries me. My dealership where I do all my work has told me that I should follow the reminder on the dash no matter what and that I don't need to change it earlier but that has been 9000 miles on the truck and 6000 on the car and that just goes against all I have ever been taught on my vehicles.

Thank you,
Charlie in Bowling Green Kentucky

Dear Charlie,

When we saw oil change intervals this high we got nervous too. The system takes into account things like engine temp, idle time, mileage and much more to determine change intervals so it's a "Smart System" but not fool-proof. It can't tell what oil you use. Don't skimp on the oil type. You need to use what is recommended by the manufacturer because that is what they base changes on. The factory recommended engine oil is made to last much longer than standard conventional oils and is formulated for long life. It doesn't have to be theirs but has to meet their specs. Using a cheap oil will reduce miles between changes and can affect your engine warranty.

Take care,
the Motor Medics

Dear Motor Medics,

I have a car that needs a timing belt, and it is going to cost over \$1700.00 to change. That sounds crazy to me. I have had belts changed before on my cars and they have never been more than \$50.00 but none of my cars have had timing belts. It is a 2005 Lexus so I know it might run a little more than some of the other domestic cars I have had but come on, 1k is just way over the top and I think I may be getting taken. Can I just let it go? Thank you,

Ben in Portland Maine

Dear Ben,

Welcome cars with timing belts. When we give purchase advice, we will tell buyers to take the cost of regular timing belt service into account when they purchase a car. It is a Must-do item that if let go will eventually break and in the case of an interference engine "which most are" will destroy the engine or severely damage it at the very least and that can cost thousands to repair. The timing belt takes the place of the timing chain and it times the movement of the valves and pistons so that the valves are closed when the pistons get to the top. If the valves are open, then they will collide, and parts will break. Timing belts are typically in the range of \$800.00 to over \$2000.00 to do the job on some cars.

Take care,
the Motor Medics

Dear Motor Medics,

I was filling up my washer bottle in the dark so that I could keep my windows clean and wanted to use the kind that cleans bugs off and de-ices, you know the kind that's orange. Well, it is also the color of engine antifreeze so if you haven't got it yet I poured engine antifreeze into my windshield washer bottle. Antifreeze really makes a mess on the window and I cannot see a thing. How do I get it out? The bottle is buried deep in the fender.

Thank you,
Mark in Bennington Vermont

Dear Mark,

You are not the first or the last one to do this. We take this question several times a year and it can be fixed. You need to get all the coolant out of the bottle and clean the glass well to get rid of the streaks the coolant leaves. If you have not run the pump then get a suction gun from a parts store and remove all the coolant you can then flush with water, suck out the water with the suction gun and repeat until free of antifreeze then add new washer fluid. If you have run the pump, you will need to do the previous steps then run the pump to clear the lines of antifreeze. You can also have your local mechanic do this for you. Mixing fluids is never good but mixed-up washer fluid is easier to fix than other fluids.

Take care,
the Motor Medics

FOR ENTERTAINMENT ONLY • Always consult your local shop and follow all safety procedures before repairs.

Come visit the Motor Medics® online @
underthehoodshow.com

Branson
TRACTORS

**Heaviest Tractors in their Class,
with the Most Loader Lift Capacity!
All Branson & TYM Tractors include
FREE LOADER!**

TYM
TRACTORS

**3 Year Limited
Warranty**

**Financing
Available**

BRANSON 2515R

25HP, 4WD, W/LOADER, 12X12 Shuttle Shift Trans, 2200 lbs loader lift capacity, 3022 lbs tractor weight only.



\$297⁹⁰/MO.

0 DOWN, 84 MO FINANCING WAC

BRANSON 2515H

25HP, 4WD, W/LOADER, HST Trans, 2200 lbs loader lift capacity, 3022 lbs tractor weight only.



\$311⁴¹/MO.

0 DOWN, 84 MO FINANCING WAC

BRANSON 3515H

35HP, 4WD, W/LOADER, Hydrostat Trans, 2200 lbs loader lift capacity, 3022 lbs tractor weight only.



\$355⁵⁸/MO.

0 DOWN, 84 MO FINANCING WAC

BRANSON 4215R

42HP, 4 WD, w/Loader, 12x12 Shuttle Trans, 2200 lb Loader Lift Capacity, 3100 lb Tractor weight.



\$355⁵⁸/MO.

0 DOWN, 84 MO FINANCING WAC

**BRANSON 2515R
& BACKHOE**

25HP, 4WD, W/LOADER, & Backhoe to header, 12X12 Shuttle Trans, 2200 lb loader lift capacity, 3022 lbs tractor weight only.



\$413⁸¹/MO.

0 DOWN, 84 MO FINANCING WAC

**BRANSON 2515H
& BACKHOE**

25HP, 4WD, W/LOADER, Hydrostat Trans, 2250 lbs loader lift capacity, 3022 lbs tractor weight only.



\$421⁸⁴/MO.

0 DOWN, 84 MO FINANCING WAC

TYM 474 HYDROSTAT CAB

47 HP, 4WD, W/Loader, Cab w/H&A, Hydrostat Trans, 1 set Remotes, 2200 lb, Loader Lift Capacity



\$473³⁷/MO.

0 DOWN, 84 MO FINANCING WAC

BRANSON 5520 CAB

55 HP, 4WD, W/Loader, Cab w/H&A, 16x16 Shuttle Shift Trans, 2 sets Remotes, 2700 lb. Loader Lift Capacity, 4200 lbs. Tractor Weight



\$532²⁷/MO.

0 DOWN, 84 MO FINANCING WAC

MIDWEST LARGEST BRANSON DEALER & TOP "10" NATIONWIDE!

Tatum Motor
FARM TOOLS SINCE 1889

931 N. BUS. HWY. 71
ANDERSON, MO
417-845-3563
HOURS M-F 8-5 • SAT 8-NOON

1033 W. HENRI DE TONTI BLVD
(412 WEST), TONTITOWN, ARK
479-361-9488
HOURS M-F 8-5 • SAT 8-NOON

687053jn

S A L E S • S E R V I C E • P A R T S

CAS STEEL

METAL BUILDING SUPPLIES



METAL CULVERTS

- **23 STEEL ROOFING COLORS** plus 18 Textured Colors
- **VINYL SIDING**
- **GARAGE DOORS**
- **TRIM**
- **BUILDING KITS** Steel or Wood

LIFETIME WARRANTY

www.cassteelneosho.com
18027 E. Hwy. 86 • Neosho, MO
 (5 Miles East of Walmart on 59 Hwy. • Old 60 & 71 Alt.)
Toll Free 855-455-2526 or 417-455-2525
 Mon-Fri • 7:30-5:00



American Made Metal Roofing

40 year warranty.....\$2.75

Building In A Box Stud Wall & Pole Barn Kits 40 Year Warranty	29 Gauge 10 year \$2.55
24x30x8.....\$5,400	29 Gauge #1 Galvalume \$2.05
30x40x10.....\$8,700	26 Gauge Galvalume \$2.45
40x60x12.....\$16,800	26 Gauge 40 year \$3.35

417-553-8697

We Manufacture Our Own Metal and Trusses
Precut Packages Available

OVERMAN BUILDINGS SUPPLY

202 S. Prigmor Joplin, MO. 417-553-8697



BRB BUILT RITE BUILDINGS

1110 W. Harmony Neosho, MO
417-632-4675
www.builtritebuilding.com

- 2x6 Nailers
- Trusses 4' On Center
- Patented Concrete Pier Options Available
- Free Estimates
- McElroy Metal (40 Year Warranty)

BUILT-RITE POST FRAME BUILDINGS

- Shops • Garages • Machine Sheds
- Cattle Facilities • Homes
- Horse Barns • Riding Arenas




Serving The Area For Over 35 Years. Locally Owned & Operated.

SUPERIOR METALSALESINC.COM

Metal Building Supplies & Components

Commercial • Agriculture • Shop Buildings
 Custom I-Beam Buildings w/26 ga. 40 Year Warranty on all Prime Steel Panels


HAY BARN 40x75x16
 Roof Only • Materials CALL FOR PRICING DUE TO RISING COST OF STEEL. All American Steel. Install Available.



- 29 Gauge 40 Year, Painted, Warranty.
- 19 Colors Available.

Steel Pricing Fluctuation. Please Call for Quotes
Call For Mini-Storage Quotes

Toll Free 1-888-364-9527 Office 1-417-671-8015 Fax 417-671-8018
 Hours: Mon-Fri 8am-5pm
12760 St. Hwy. 76. • Cassville, MO 65625
sales@superiormetalsalesinc.com



BIG NICKEL

B Section Index

AGRI-BUSINESS..Page 02
 Metal Buildings.....Page 02
 Equipment & Supplies.....Page 03
 Cattle.....Page 06
 Hay/Feed/SeedPage 06
 Horses & MulesPage 06
 Livestock-AGRI.....Page 06
 Land/Pasture.....Page 06
 YARD SALESPage 07
 YS-Garage SalePage 07
 AUCTIONS & ESTATE SALES.....Page 07
 Auction Sales.....Page 07

VANOVER METAL BUILDING SALES

(918) 253-6030
 LOCATED 11 MILES WEST OF JAY, OK. ON HWY. 20
 MON-Fri 8:00 - 4:30

Centra Series Bolt Up Red Iron Kits

DON'T WAIT MONTHS FOR YOUR BUILDING!!! Ready in a few weeks.
 Choose from 4 Sizes, Comes with (1) 3070 Walk Door. Just Add Anchor Bolts and an Overhead Door for a complete building. Stop by or call today.




Carport and Garage Kits Also Available.
 Frames made here at Vanover Metal for a simple hometown purchase.

JOPLIN TRUSS

ENGINEERED QUALITY CONSTRUCTION
 2 LOCATIONS TO SERVE YOU:
 Stark City, MO 417-472-6800
 Hwy. 96 - Avilla, MO 417-246-5215

BIG NICKEL DEADLINES

CLASSIFIED LINE AD DEADLINES

AUCTIONS 10am • Mon.	A SECTION 3pm • Mon.
B SECTION 10am • Mon.	VEH SECTION 3pm • Mon.

DISPLAY AD DEADLINES

AUCTIONS Noon • Wed.	A SECTION Noon • Thurs.
B SECTION Noon • Thurs.	VEH SECTION Noon • Thurs.

15 WORDS \$11.75 - CALL THE BIG NICKEL TODAY AT 417-624-4100!!

BEST BUY BUILDERS & MORE WE BUILD ALL SIZES!

417-508-9351 • Call or text



24X48
\$25,900+tax



We can Custom Design Homes starting at **\$27 sqft**

Licensed **25 Years Exp.** **Insured**

HONESTY **WARRANTY**

JONES BUILDING SYSTEMS

www.jonesbuildingsystems.com
Office 479-644-8336 • Fax 479-657-6701



Metal Buildings
Mini Storage
Metal Roofing
Site Work and Concrete

★ No Dirt, Tax or Delivery Included Yet ★

RED IRON
Installed Includes Slab
100x125x16
Insulated
Incl. 4 O/H &
4 W/I Doors
CALL FOR PRICE

RED IRON HAY BARN
40x75x16 Installed
Roof only w/piers
\$35,654

Call about Mini Storage Buildings

RED IRON HAY BARN
Installed
64x75, Roof only
w/piers
\$50,568

★ Commercial & Residential★ Heavy Built All American Steel★

QUALITY POST FRAME CONSTRUCTION LLC



POLE BUILDINGS • GARAGES • GENERAL CONSTRUCTION
QUALITY WORKMANSHIP • METAL ROOFING
FREE ESTIMATES!

WILLARD KNEPP 918-533-2637
FAIRLAND, OK • NO SUNDAY CALLS, PLEASE

wallis LUBRICANTS



MOBIL HDEO 15W40
5 GALLON PAIL **\$60**

IS TRACTOR HYD FLUID
5 GALLON PAIL **\$50**

Additional sizes available
CONTACT US FOR DEF, FUEL, AND ALL YOUR LUBRICANT NEEDS
Kevin Boswell (417) 439-3403

IDEAL STRUCTURES LLP

Specializing in Pole Buildings, Garages, Shops, and General Construction

Marion Sommers PHONE: (479) 335-6230
EMAIL: MarionSommers69@gmail.com
Hindsville, AR 72738

BO'S ONE STOP

Polyethylene culvert pipe
4" to 36" dia. smooth bore, corrugated outside.

CALL: (620) 231-6305
1116 W 4th Pittsburg, KS

Equipment & Supplies

(2) 23.1-30 BF Goodrich 8-ply at 60%, \$550 each, \$1000 for the pair. 417-235-8547.

Equipment & Supplies

1952 8N FORD TRACTOR. Completely refurbished, including new tires and paint. Runs great. \$5500. Chelsea, Oklahoma. Ask for Peter. (918) 697-0803.

JOHN DEERE 1380 MOCO Hydra Swing, \$750. 417-438-5638.

Have Clutter? Need room? Call the Big Nickel classifieds. We can help! 417-624-4100.



LUCKY DISCOUNT LUMBER

NOBODY BEATS OUR PRICES

OPEN

Sale Ends June 30, 2023
Seymour, Missouri 417-935-4201

Pole Barns & Post Framed Buildings!

23'x32'x10' \$6,888 Material Only \$9,090 Labor Included	23'x40'x10' \$7,885 Material Only \$10,600 Labor Included	30'x40'x10' \$9,595 Material Only \$13,100 Labor Included	40'x60'x12' \$16,745 Material Only \$23,985 Labor Included
--	---	---	--

Call for free quote, brochure & color chart. Other sizes also available.



Due to increased demand for our quality product we are currently hiring new barn construction crews. Contact Jeff

10 ft. Slider • Engineered Trusses 8' O.C. • 2x6 Treated Bottom Wrap • Screws • 2x10 Top Wrap • 2x4 Purlins • Full 29 Gauge Steel • Plus 3 ft. Entry Door with Lock

OPTIONS: Sidewall Heights on all Buildings 10', 12', 14' & 16'. Overhead Garage Door. Skylights. Insulation. Wainscoting. Insulated Vinyl Windows. Cupolas. Labor Rates Slightly Higher over 50 Miles from Seymour. Call for YOUR FREE QUOTE TODAY!!!

PAINTED WHITE, GREEN OR TAN METAL\$97.79

10' - \$31.00 12' - \$37.20 16' - \$49.60

MIX & MATCH METAL\$59.99

8' - \$15.20 10' - \$19.00 12' - \$22.80

GALVALUME METAL\$79.99

10' - \$25.40 12' - \$30.48 16' - \$40.64

GALVANIZED CORRUGATED METAL SOLD OUT!

8' - \$9.84 10' - \$12.30 12' - \$14.75 16' - \$19.67

40yr Painted Metal
\$105.59/Sq

KNOTTY PINE DOORS
Starting at **\$164.99**

Prices subject to change without notice
6X6 CEDAR POST LIMITED TIME \$5.87 LN FT

Car Siding!

1x6 White Pine Siding **69¢** in ft
1x8 White Pine Siding **99¢** in ft

* 4 Profiles to choose from!
Broken Bundles Add 10¢ Per Ft.

4x8 Sheeting
Less than full units Add \$1 per sheet

3/8" Beaded Paneling	\$24.99
5/8" T111 Siding Paneling	\$19.99
1/2" Plywood	\$9.99
3/4" Plywood	\$29.99
3/16 Pegboard	\$12.99

REAL WOOD SIDING

2x6 Log Siding **\$1.76** in ft
1x8 Beveled Cedar from- **99¢** in ft
T1-11 Siding from **\$19.99**

DECK PACKAGES

Materials Only

8x8.....\$349.00	10x12.....\$699.00
10x10.....\$499.00	10x16.....\$899.00
12x12.....\$899.00	12x16...\$1179.00

QUAKER Now Stocking Quaker Vinyl Windows

2030 \$ 163.99	3030 \$189.99
3040 \$206.99	3052 \$225.99
3040Twin \$453.99	3052Twin \$497.99

LOTS OF MATERIAL AVAILABLE FOR THOSE IN HOME PROJECTS!

NEW PACKAGE HOMES



2x6—16" on center-Exterior Stud Walls
Residential Roof Trusses-2' on center
4/12 pitch with 1' over hang
40 year Painted Metal roofing in 20 Different Colors
Profile Ridge Vent - Ventilated Ridge Cap
Vinyl Center Vent Soffit
Color Matched Metal Fascia & Gable Trim
2 - 3' 6 Panel Entry Doors
4 - 3'x4' Vinyl Insulated Windows

Your Choice of either:
Stock 5/8" T111 Siding w/1x4 Pine Window & Door Trim - or -
7/16" OSB & House Wrap ready for other finish options

ALL FIGURED FOR SUITABLE CUSTOMER SUPPLIED SLAB OR SUB-FLOOR

Price for Basic Materials Package (No Labor at this Time)

20x24(480 sq. ft.)	20x32(640 sq. ft.)	20x40(800 sq. ft.)	28x40(1120 sq. ft.)	28x48(1344 sq. ft.)
\$9,490	\$10,839	\$12,339	\$15,129	\$18,729

HALL Machine Tool Sales

New and Used
Industrial Services

>>> 100 + Tons of Tooling Onsite <<<

Lathes | Mills | Presses | Saws All Sizes | Fabricating
Bending | Forming Machinery | Welding | Burning
Waterjet Machinery | Precision Layout | Granite Tables

★ 5 Acres of Machinery Under Roof ★

CRANES and HOISTS | We Provide Transportation, Rigging and Relocation Services
Visit our ebay store at hallindsvc@ebay.com

Call Kim Today **316-945-4255** Wichita, KS

PRECISION EXCAVATING

Building Pads - Ponds - Concrete
Septics - Roads & Driveways
Land Clearing Demolition
& much more


Matthew Zimmerman
Wyandotte, OK
918-961-2183

Customer Satisfaction Is Our Goal!

YOUR AUTHORIZED GOOSENECK™ DEALER

FRYE FARMS
The #1 Dealer in Missouri for Gooseneck Sales \$s in 2004-2022.
Reason: PRICE!

Trade In's Welcome!



FRYE FARMS TRAILERS
Seneca, MO • 417-438-0146



LUCKY DISCOUNT LUMBER

417-935-4201
455 State Hwy C • Seymour MO 65746
www.luckydiscountlumber.com

ACCREDITED BUSINESS

KIOTI *Since 1985* **John's Tractor Works & Equipment Inc.** 1985
run ahead of the pack
 YOUR AGRI. DIESEL SERVICE SPECIALIST

Mon-Fri 8am-5pm
 Sat 8am-Noon
 3 miles East of Vinita,
 OK on Hwy 60
 Serving the 4 State Area
 for over 35 years
918-256-5774



CS
 22-25 HP SERIES

0% UP TO 60 + \$1000
 FINANCING* MONTHS

DK
 40-58 HP



ALL DK/DK SE SERIES MODELS

0% UP TO 72 OR \$5200



CK
 35-40 HP

ALL CS, CX, CK SERIES MODELS

0% UP TO 84 OR \$3100
 FINANCING* MONTHS CASH BACK* (T-L-B)



RX .99% UP TO 60 OR \$6500
 66-73 HP FINANCING* MONTHS CASH BACK* (T-L-B) WAC*

INTERSTATE POLE

NO SUNDAY CALLS, PLEASE



★ Commercial ★ Mini Storage ★ Garages ★
 ★ Horse Barns ★ Shops ★ Agriculture ★

Darrell Knepp • Sarcoxie, MO
 417-437-1452 • interstate.buildings@privategarden.org

SPECIAL FINANCING OPTIONS

0% Financing Available on ALL NEW MODELS
 (with approved credit)

ATTN: FARM BUREAU MEMBERS
 Ask about our Farm Bureau Rebates
 On ALL MODELS!!



NewCo Service
 11989 Homer Lane
 Neosho, MO
 417-451-2660

Call Jeremy for Pick up & Delivery Options

Equipment & Supplies



2014 BESLER bale bed, with engine driven hydraulic, have pictures, \$8750. 417-235-8547.

Advertise your Flea Market or Antique Store in the Antique & Flea Market Directory. Call Billie for more information and special pricing. 417-624-4100.

Equipment & Supplies

EARLY DEADLINE
 in Observance of
 Independence Day

Display Ads (including Auctions) will deadline **Wed. June 28 at noon.** Any questions, please contact your sales representative.

Classified line ad deadlines:
 Friday, June 30
 B section-10 am
 A, Misc. and Veh: 3pm

Equipment & Supplies

JD 567 round baler, net and twine, 12,000 bales, asking \$15,000 or best offer; Kubota disc mower, 5032 model, asking \$14,000 or best offer. 620-724-2720.

JOHN DEERE 5' ROTARY BRUSH MOWER. Used. Slip PTO Drive. \$950. Chelsea, OK Ask for Peter. (918)697-0803.

HAVE A pet or puppies to sell? Call us. You can even pay over the phone. 417-624-4100.

WALT'S TRACTOR - SERVING YOU FOR OVER 56 YEARS • WALT'S TRACTOR - SIMPLY THE BEST FOR LESS



Many Models IN STOCK!

Stop by for details!



Come see how we are teaching old dogs new tricks!

- Great high quality machine for home owners
- Kawasaki, Briggs and Kohler Engines
- Welded steel deck



Since 1967

Walt's Tractor LLC
417.472.7200

56 Years

12 Miles East of Neosho on Hwy. 86
 24817 East Hwy. 86, Stark City, MO
 Family Owned & Operated Since 1967

Alpha MPX

- Hydro gear ZT3100 transmission
- Big bite drive tires
- Kawasaki engine 23/24HP
- 48", 54" and 60" welded steel deck sizes

*Shown with optional LED lights



www.waltstractorsales.com

Where Service is Always in Season!





The World's #1 Selling Farm Tractor!

LAMBERT

Tractor & Machinery Sales, L.L.C.

The Largest Mahindra Dealer in Kansas!

8001 S.E. Hwy 66, Galena, KS

www.lamberttractor.com

620-783-1895

We are Open. Curbside Service Available



*2018 data including all Mahindra brand sales

NO DPF FILTER TO SERVICE OR REPLACE SAVES YOU TIME AND MONEY NO DOWNTIME NEEDED FOR REGENERATION

7 YEAR
LIMITED POWERTRAIN
WARRANTY

• SALES • PARTS • RENTAL • SERVICE •



\$2,000 OFF

Mahindra 6065 Power Shuttle, 4x4, w/loader, 65hp.....

\$.549/MO

\$0 Down, 84 Month Financing Available W.A.C.



Mahindra 1635 HST, 35hp, quick attach loader & bucket, 4x4....

\$.340/MO

\$0 Down, 84 Month Financing Available W.A.C.



\$2,000 OFF

Mahindra 6075 Power Shuttle, 75 hp, 4x4, quick attach loader & bucket.....

\$.592/MO \$2,000 OFF

\$0 Down, 84 Month Financing Available W.A.C.



Mahindra 4550 Gear, w/loader, 4x4, 50 HP

\$.445/MO

\$0 Down, 84 Month Financing Available W.A.C.



0% for 84Mon

Mahindra 1626 Shuttle, 26hp, 4x4, w/loader

\$.269/MO

\$0 Down, 84 Month Financing Available W.A.C.



\$1,200 DISCOUNT ON ANY FLEXWING CUTTER
Offer ends June 30th

- Bush Hog BH115, 5' cutter, slip clutch, 3pt..... \$2,399.00
- Bush Hog BH116, 6' cutter, slip clutch, 3pt..... \$2,650.00
- Bush Hog BH217, 7' cutter, slip clutch, 3pt..... \$5,650.00
- Bush Hog 11251720F Double Bale Spear, SKU..... \$699.00
- Bushhog 1815, 15' cutter, Flexwing, F&R chains,..... \$21,750.00
- Bush Hog 2215. 15' cutter, Flexwing, F&R Chains..... \$24,350.00

TRIMMER SET

FSA 57

SAVE \$50

NOW ONLY \$149.99*



USED Equipment

• Used Zero Turn Mowers
..... starting at \$1,500

See Full Line Of Used
Equipment & Implements At
lamberttractor.com

STIHL
STIHL BG50 Blower's
~~\$149.99~~
SALE PRICE \$129.99
LAMBERT TRACTOR
620.783.1895

STIHL
CHAIN SAWS
STARTING AT
\$199.99
CHAIN SAW CHAIN SPECIALS!
LAMBERT TRACTOR 620.783.1895

HUSTLER SPRING SALES EVENT!

HUSTLER
UP TO \$350 REBATE!
ON SELECT
RAPTOR FAMILY PRODUCTS!
(ENDS JUNE 30TH, 2023)

Largest Independent Cattle Equipment Dealer in America with top brands like:

Arrowquip Lakeside
Pearson Cattle Flow
Cowco Red Rhino



CALL NOW
855-880-7961
BigGoBob.com

Equipment & Supplies

Misc Farm Equipment, all in working order. Bailer 605G, many new parts \$2000; Rake 8W \$1250; IH rake 2W ground driven \$300. 417-775-2837

Cattle



REGISTERED POLLED HEREFORD BULLS, 19 months old right now, with good dispositions and genetics. 620-778-8561. schlatterherefords.com

EARLY DEADLINE in Observance of Independence Day

Display Ads (including Auctions) will deadline **Wed. June 28 at noon.** Any questions, please contact your sales representative.

Classified line ad deadlines:
Friday, June 30
B section-10 am
A, Misc. and Veh: 3pm

Limousin bulls, reds and blacks, large selection, bred and open Limousin heifers. Double J Ranch, Will 417-350-9810, 417-214-4567.

Land/Pasture

PRECISION LAND SERVICES

WE CLEAR THE PATH TO YOUR DREAMS

Contact us for a **FREE** consultation and start the process of reclaiming your land. We offer the most ecological form of land clearing.

ON SITE ROCK CRUSHING: Up to 6" rocks • New construction Yard Preparation
No small stumps after mulching
precisionlandservicesllc.com

Low Impact Eco-Friendly Land Clearing & Brush Cutting

Before **After**

Contact us for a free estimate **417-846-3723**

AGRI-BUSINESS

Cattle

REGISTERED CHAROLAIS
Yearling Bulls. EPDs, BW, WW, YW, big and stout. Weaned heifers and bulls.
Wright's Charolais, Mt. Vernon, MO.
417-466-3560,
573-512-1614
417-466-8117
417-466-8158

Registered Aged advantaged, calving ease, Red Angus, Sim-Angus, Hereford Influenced bulls for sale.
DIAMANTE RED ANGUS RANCH
Diamond MO.
Herdsmen Jarrod Todd
417-846-3248.

REGISTERED ULTRABLACK & BRANGUS BULLS
Bulls and Heifers. Excellent bloodlines. Gentle dispositions. Delivery available. Lots of happy customers!
Discounts for Veterans!
Horseheadranch.net.
918-695-2357

BRANGUS BULLS
Gentle, small birth-weights. Bulls are service age, virgin bulls, semen checked, raised on forage, and ready to use.
Hatfield Brangus Bentonville, AR
Cell 479-531-2605
email: drchas@cox.net

RED ANGUS FALL BRED HEIFERS (12) 900-1000 LBS. BRED TO "SUPER CALVING EASE" RED ANGUS BULL, \$2500 PER HEAD. ORY'S CIRCLE 7 RED ANGUS, www.oryscircle7.com
Call Dennis 417-652-3425 or 417-839-7205.

CRYSTAL SPRINGS LIMOUSIN.
Purebred Limousin Bulls, 12-36 months. Reds, Blacks and Whites. Heifers also. Most polled, bred for calving ease, calm. 39 years breeding Limousin. 417-540-0277.

Cattle

(15) HEAD of black and red young cows, bred to black bulls, \$1400. 417-850-1726.

BIG NICKEL ads sell! Call for more information and specials. 417-624-4100

Cattle

RED BALANCER BULLS, 15 months. Farm raised and semen tested, \$3,500. 417-312-7300.

BE AN EARLY BIRD! Place your ads before Monday and beat the rush!

Wheeler Livestock Auction
Special Stock Cow Sale
Osceola, MO

SAT., JUNE 24, 2023 • 6:00 P.M.

Expecting 1500 or more Bulls/Cows/Cow-Calf Pairs

ATTENTION CATTLEMEN:

We have an outstanding line up of high-quality cattle selling due to extreme drought conditions. Consignments continuing to call. A great opportunity to buy top cattle that would not otherwise be for sale.

RYAN CULPEPPER -

• 2 Blk Sim-Ang bulls at 18 mo.'s. Lucas Genetics

JOHNNY LYSINGER -

• 1 Red Brng - SimAng X bull 16 mo. (63lb BW). 1 Blk SimAng bull 12 mo.

ADAMS FARM -

• 1 Reg. BWF Hereford Bull DOB- 6/1/22. 1 bred Hereford cow - DOB 2/5/19. 1 bred hfr. DOB- 8/30/21 All home-raised and gentle.

JIMMY SANDERS -

• 47 Fancy Angus hfrs 2 yrs 1050lbs Bred to Gardner Ang CE bull, calve Oct 1st. 16 Blk Ang Cows 4-7 yrs 1200lbs with 16 calves 250 lbs. The above cattle are all home-raised Gardner Genetics all the way. Will work for anyone.

JIM DENNY -

• 81 Blk & BWF SimAng X hfrs. 2 yrs 1150 lbs. with 81 Ang sired calves at 300lbs. All hfrs and calves are worked and back with top Angus bulls (May 10th) This is a very fancy set of hfrs and calves

LARRY & RHONDA SHELBY -

• Selling only due to drought 40 yell and red CharX cows 3 yrs - BM. 1250lbs with 40 calves sired by Seedstock Plus Red Bal bulls. Calves 300lbs. All calves born Feb 1st in 45 days. Bulls put back on cows May 1st. All cows & calves worked and tagged to match. Entire herd home-raised.

JERRY DILLNER-

• 45 Char & CharX cows 5-7 yrs with 40 Red Angus sired calves 300lbs. Cows bred back to Red Angus bull. Every cow home-raised, selling only because of drought conditions.

MAYBERRY FARM DISPERSAL -

• Due to drought 275 mix cows and calves. Approx. 150 Blk & BWF cows 3 - 7 yrs with calves 300lbs. Approx 75 Red and Red-Baldy cows 3-7 yrs with 300lb calves. Approx 50 CharX cows 3-7 yrs with calves 300lbs. The above 275 pair are all tagged to match, worked and back with top Red Ang bulls since May 1st.

RANDOLPH FARM DISPERSAL -

• Due to drought 100 blk cows 3-7 yrs 1200lbs bred to Blk Bal bulls to calve Aug 20th. 40 Blk cows 3-7 yrs with 40 calves 250lbs 40 mix cows 5 yrs - BM bred to Blk Bal bulls 10 Blk Bal bulls 2-4 yrs. Good honest set of calf-raising cows. Always sells calves here.

DALTON FARM DISPERSAL -

• Due to drought 63 Blk & BWF cows 4-7 yrs with 43 calves 250lbs. Rest cows bred 2nd - 3rd to good bulls

VANVOORST FARMS LLC -

• 50 Blk cows 5-7 yrs with 50 - 300 lb. Blk calves on their sides Cows bred back Blk. 50 Blk cows 5-7 yrs bred Blk calving starts Aug. 20

DEBRA RACHETER -

• 5 Blk and BWF cows 4-7 yrs with 5 SimAng X calves 300lbs. 10 Blk & BWF cows 3-7yrs bred to calve Sept 1st. 1 Red SimAng bull 2 yrs.

STEWART FARMS -

• 20 Blk & Red cows 6 yrs- BM 1250lbs with 20 Blk calves 400lbs. Cows bred back blk. 1 Blk Angus bull 5 yrs.

JOHN HEISERMAN -

• 15 CharX cows 5- SS bred 3rd. Nice set.

GASS FARMS -

• 15 AngSaler X pairs 4-6 yr (Blk cows & calves) spring born 200lbs.

KELLY DORITY -

• 10 Blk & BWF cows 1050lbs bred Blk to calve Sept 1st.

HOME PLACE LAND & CATTLE -

• 2 Registered Red Angus bulls 22 mo.

FOR CONSIGNMENTS PICS/VIDEO- WEBSITE AND FACEBOOK
wheelerlivestock.com/search Wheeler Livestock Auction on FB

Next Stock Cow Sale is July 29th, 2023 at 6 pm.
We will not have a Feeder Sale on Thursday July 6!

Osceola, MO • 686 SE 13 Hwy., PO Box 560
BARN 417-646-8102



Byron Wheeler-417-777-0897
Darwin Hearling-417-296-1029
Lyndon Ropp 918-325-1616
Kevin Wade-660-492-3279
Tim Sherrer 573-855-1951
Burleigh Wheeler-417-840-6561
Red Whistance 417-276-7909
Les Tennis-417-466-8786

Barn Manager: Austin Shelby 417-309-1350
Marketing Manager: Sue Hemenway 417-839-9316

Bid online on CattleUSA • www.wheelerlivestock.com
• Like us on Facebook-Wheeler Livestock Auction

Goswick Services
AGRICULTURE

**ROCK HAULING
LIME SPREADING & FERTILIZER**

417-438-1110

Cattle

REGISTERED ANGUS Bulls, semen tested, big rugged serviceable aged, top performance breeding with low birth weights.
Elbert Angus Farms
417-379-2120
417-489-0438

Livestock

HYLINE LAYING HENS, \$3 each. Pierce City, MO. 417-489-2062.

POULTRY HOUSE REMOVAL
We buy good quality chicken and turkey houses. Remove the houses and all deconstruction debris. Local professional crews. Serving since 1992.
Cedar Creek Contractors, LLC 785-217-3379.

Hay/Feed/Seed

(2) 265 gallon totes of Soybean oil surfactant, \$12.50 a gallon for both, \$13 a gallon for one. 417-235-8547.

ALL THINGS HAY!
Custom baling. Taking new customers. 20 miles radius of Neosho. Call Junior 417-850-8621.

BRADFORD SPREADING
Lime and litter. Taking care of farmers in SW MO area. 417-439-2203.

Hay/Feed/Seed

CUSTOM LIME SPREADING
Norman Kimbrough
417-652-7364
or 417-235-9712

QUALITY FEED at Affordable Prices.
16% mixed feed, \$300 a ton, \$290 in bulk; dry distiller grain, \$400 ton; 16% mixed feed in 50lb sacks \$9. 1200lb. box on pallet \$180 Bulk price \$10 off board price.

We have small squares!
Alfalfa: \$10
Mixed grass: \$7

Call for details. colleyfeed.com
Located 4 miles west of Stotts City on Farm Road 2120.
Contact: Lance 417-316-0574.

Prices subject to change without notice. Call to inquire. Ask about delivery in bulk or super sacks.

ROUND-UP READY ALFALFA SQUARE bales, \$12 out of barn, \$10 out of field. Custom round bale wrapping, \$12 a bale. Custom baling, call for pricing. Schilling Farms, Lamar, MO. 417-209-1667.

WANT TO BUY: Chicken litter in the house. Call 417-235-9712.

Horses & Mules

RANCH TIME ACCESSORIES
LOOK GREAT FOR LESS...
★ CUSTOM HATS
★ HAND MADE BOOTS
★ WILD RAGS
★ WESTERN DECOR
★ COWHIDES & GIFTS
★ PURSES & WALLETS

NEW LOCATIONS: GROVE, OK. DOWNTOWN, MT. VERNON, MO EXIT 46. 417-635-7777

HEARTLAND HORSE AND LIVESTOCK SALES LLC
535 N. Subway Blvd. Nevada, MO

Like us on Facebook @HeartlandHorseandLivestock Sales LLC for future consignments.

SALES 2nd and 4th Wednesday of the month

Owners:
Nathan Collins 620-215-4745
Karrie Collins 620-644-2197

Tack Sale Starts at 5pm with horses and livestock to follow.

Horses & Mules

(2) AQHA Red Roan mares with Blue Roan fillies at side, \$5000 a pair; (2) Zan Parr Bar colts, year old, (1) horse colt, (1) filly, \$2500 for pair. 417-844-2516.

**JULY 3RD & 4TH
HEPLER RURITAN RODEO
HEPLER, KS. 8PM
URA, MRCA, OPEN
Cowboy call in June 26th
10am-3pm
417-876-2353.**

NEED SOMETHING? Let us help you. You can advertise that you are looking for a special item. Call 417-624-4100 for more information.

YARD SALES

Garage Sale

HUGE SALE-Trailer parts, ramps, ramp gates, truck accessories, antiques, vintage glassware, Tupperware, clothes, books, and lots more. Old Tricks 4 Trucks store, 2195 Coyote drive, Joplin. Hours 9-3 June 12 thru June 30. CASH ONLY.

PLEASE PLACE your classified ads on The Big NICKEL website. Our web address is www.bignickel.com

Auction Sales

ESTATE AUCTION
Sat. June 24th – 10:00 A.M.
3003 N. Joplin, Homer Cole Community Center
Pittsburg, Ks.

Selling the estate of Mrs. Mary Witt at Public Auction. Mrs. Witt was an avid Collector and Loved Antique Furniture, Flo Blue, Good Glassware & Clocks.

ANTIQUÉ FURNITURE: Lawyer 5 & 6 stack book cases, several East Lake pieces: wash stand, dresser, Chest, Parlor Tables and more, Victorian Sofa, Jelly cabinet, Curved glass China cabinet, unusual Bow front glass doored Buffet, Platform rocker, occ. Chairs, Spice boxes, Pie safe, Secretary, foot stools, and many other pieces.

FLO BLUE—CLOCKS—GLASSWARE: Several German weight clocks, clock shelves, unusual amount of Flo Blue, Children's dishes & Tea sets, older table lamps, Lg. amt. of older pressed glass, Jewel T pieces, Lg. set of Mason Vista England dishes, adv. Tins and much more.

AUCTIONEERS NOTE: One of the last old estates to come to the market for many years. Check the web site for complete list & pictures: prideauxauctionservice.com

Not responsible for accidents Refreshments available
Terms: Cash or Good Check w/ID Items MUST be removed day of sale

OWNERS: ESTATE HEIRS
AUCTIONEERS: Merle Lloyd, Lance Anderson, Jon Prideaux
620-215-6864 • 620-231-7494

ESTATE AUCTION
Sunday June 25th 2023 at 1:00 P.M.
Auction Will Be Held At 1075 SW. Boston Mills Rd, Columbus, KS. 66725.

Selling Personal Property, Household, Tools & Pickup Truck

Vehicles – 1988 Chevy Cheyenne 6 cyl standard transmission. 150,000 miles plus

Tools – Hand Tools, Sockets, Long Handle Tools, Craftsman Shop Vac, Ladder, Small Air Compressor, T-Post, Power Washer, Power Tools, Battery Charger, 110 Fence Charger, 2 Wire Fence Panels, Push Mower, Wheel Barrow, Tool Boxes, Log Chain, 2 Wheel Dolly, Live Cage Trap, Power Cords, Weedeater, Ryobi Pole Saw, 3/4 Inch Socket Set, Truck Tool Box, Chain Saws, Generator, Pipe Clamps

Fishing Tackle – Fishing Poles, Tackle Boxes, Fishing Equipment

Appliances – Small Amana Chest Deep Freezer, Samsung Microwave, Electric Fireplace

Antiques – Roseville Pottery, Jewel Tea, Rooster Collection, Cast Iron Wagner Skillet, Cast Iron Skillets, Western Stoneware Crock, Old Iron Wheels, Old Cream Separator Base, Cast Iron Dinner Bells, Arrowhead Collection, Several Wall Clocks, Galvanized Buckets

Furniture – Nice Dining Room Table w/ 8 Chairs, Glass Sofa Table, Area Rug, Love Seat w/ Hide-a-bed, Arm Chair, Full Size Bed, Wooden Sofa Table, Recliner, Metal File Cabinet, Antique Drop Front Desk, Wash Stand, Antique Dressers

Miscellaneous – Towels, Pots, Pans, Dishes, Crock Pot, Glass Baking Dishes, Cook Books, Silverware, Sheet Music, Air Fryer, 2 Ukuleles, Troubadour Amplifier, Board Games, Pet Taxi, Charcoal Grill, Lots of Yard Art and Concrete Statues, Picture Frames, Musical Saw, Wall Décor, Framed Artwork, Old Cowboy Hats, , Lots & Lots of Miscellaneous Microwave, Electric Fireplace

Auctioneers Note: Come out for a nice clean auction with something for everyone. We have added a second estate to the auction to make a nice selection of tools, furniture, and fishing tackle. Something for everyone at this auction!

Refreshments and Bathroom Provided.
TERMS: Cash or Good Check with Proper ID. Nothing removed until settled for. Not responsible for accidents, Theft or Breakage

Living Estate of Garland & Joan Bohn

AUCTIONEERS:
David Holmes 620-674-2183
Lance Anderson 620-215-6864
www.davidholmesauctions.com

Clerks: Ron Holmes, Laura Holmes &, Donna Westervelt

Garage Sale

LOOK

ESTATE SALE
3631 FERGUSON
Joplin, MO.
Saturday, June 24
Only starting at 8am
"Find your Treasures" in this home that's under contact. Furniture including bedroom sets; dining table and hutch; kitchen table and chairs; dressers; end tables and more; stereo system; end tables and more; stereo system; flat screen TV; old quilts; sewing machine; humidifier and dehumidifier; washer and dryer; refrigerator; patio glider and chair; tools and garden items; household; linens and more!

ATTENTION!

HUGE TOOL SALE
Power tools; hand tools; motorized scooter with Joey Lift to fit mini van.
323 Rose Lane,
Webb City, MO
Sat. June 24th
8am-noon. Cash only

June 23 & 24 - HUGE SALE!
China cabinet, puzzles, quilts and so much more.
16541 Foliage Road, Neosho, MO. 64850

AUCTIONS & ESTATE SALES

Auction Sales

EARLY DEADLINE
in Observance of
Independence Day

Display Ads (including Auctions) will deadline **Wed. June 28 at noon.** Any questions, please contact your sales representative.

Classified line ad deadlines:
Friday, June 30
B section-10 am
A, Misc. and Veh: 3pm

ESTATE/ MOVING SALES

NEED A SALE?
Estate, Moving,
Downsizing?
Homes, Farms, Business,
Furniture, Cars, Trucks,
Tractors.
Just Get Organized
417-825-7003 Suzanne
Serving area 18 years.

Need something? Let us help you. You can advertise that you are looking for a special item. Call 417-624-4100 for more information.

FARM AUCTION
Saturday, June 24th at 10:00am
27255 Kafir Rd. Carl Junction, MO

2007 Kubota L3400HST Diesel 4x4 415 Hours; 1997 New Holland 6610 Diesel; 1958 John Deere 620 Gas 1185 Hours; 10' Bush Hog 3126R; 72" Bush Hog SQ72; Brock Hopper Feed Bin; 16ft Flatbed Trailer and 12ft Flatbed Trailer; 2 Gravity Fuel Tanks.

FURNITURE & APPLIANCES: Dining Room Table & Chairs; Coffee Table & End Tables; Glider rocker; Dresser & Curio Cabinet; King Bed Frame; TV Stand & File Cabinets; Washer & Dryer; 2- Kenmore 21 cu. Ft; Upright Freezers; Gun Cabinet; Patio Furniture Chairs. **MISCELLANEOUS:** Coleman Camp Stove Like New; Igloo coolers; Ice Cream Maker; Canon Printer; Lamps; Trashcans & Totes; Wall Décor, Pictures and Mirrors; Christmas Decorations; Lockers. **SHOP EQUIPMENT & TOOLS:** Bostich Air Compressor; Poulan Chainsaw; Craftsman Air Tank; Folding Ladder; Galvanized Trash Can; Hand Pump Fuel Tank; 3 Point Hay Bale Spear; Propane Tanks & Torch; Poulan Pole Saw; Weed Eaters; Extension Cords; Grease Guns; Tie down Straps; Die Hard Battery Charger; Water Hoses; Cutting Torch with Tank & Cart; Jack Stands; Ratcheting Jack; Bottle Jack; Hand Tools; Chains; Craftsman Professional 150 psi-; Air Compressor; Air Hose Reel; Air Tools; Craftsman Tool Boxes; Lincoln Arc Welder; 2 Bench Vises; Pipe Wrenches; Bolt Cutters; Wrenches, Sockets, Screwdrivers.; Drill Bits, Pliers, Wire Cutters; Vise Grips; Bench Grinder; Tractor Parts. **AUCTIONEER'S NOTE:** Owners have sold the property and need to liquidate contents of the farm and estate. Well maintained items and equipment will be offered up for public auction on June 24, 2023. Tractors, flatbed trailers, fuel tanks, tools, household items, and much more will be auctioned. **TERMS:** Cash or Check with proper ID. Credit & Debit accepted with 4% fee. Everything is sold As-Is. Nothing removed until settled for. Not responsible for accidents. Restroom will be available.



STINNETT AUCTION SERVICE
Corey Stinnett 417-529-8232 • Roy Stinnett, Auctioneer 417-529-3063
www.stinnettauctionservice.com • Facebook: Stinnett Auction Service

Construction & Farm Equipment Consignment
AUCTION
Friday June 30, 2023 9AM



Location: Glen Miller Tractor Co. 18078 West Road, Spiro, OK
4 Miles East of Spiro on Hwy 9 to Miller Tractor Company Yard Expect Lots More!



Construction Equipment

John Deere 230 Trackhoe
JD 850-C, Series 2, Dozer Cab/Air, New Undercarriage
Caterpillar D6D-LGP, Dozer with Winch
Caterpillar D4C-LGP Dozer, Hydrostat with 6-Way Blade
Trojan 1700 Loader
2005 Peterbilt 435 Cat Motor, 13 Speed
53' Stoughton Box Trailer, No Title
(2) 130 Barrel Tanker Trailers
Toro 5400-D ReelMaster Mower w/Kubota Turbo Charged Motor

Items of Interest

20+ Bales of 5x6 First Cutting Hay
Ford Ranger Pickup—Runs, No Title
Trip Hopper Cube Feeder on 3 pt. Sled
20' Big Tex Tandem Trailer
Belshe 24' Tandem Equipment Trailer with Ramps
40' Big Tex Tandem Dual Trailer with Dove Tail & Ramps
1984 F700 Ford Service Truck, Diesel, w/Tank, Reel & Air
(3) 550 Barrel Frac Tank Trailers
40'x9' Storage Container with Shelving and Electric
Ford L8000 Diesel, 10 Wheeler Dump Truck
1975 Chevy Van with Blue Viper Heated Power Washer
Pipe Racks with Pipe & Channel Iron
Many Assorted Tractor Weights * Concrete Feed Troughs *
Mineral Feeders * Head Gate w/Alley Way * Pressure Washers
* Suzuki Samurai * Antique Ford F8 Flathead V8 Truck * Hay
Wagons * Tiny House * John Deere Attachments * Rome Disc *
Several Scrap Tractors & Equipment * Scrap Iron * John Deere
Cotton Wagon * Caterpillar Boom * Large Shop Hoist * Vacuum
Pumps * Plastic Barrels * 3 pt. Disc * Barrel Grease Pump *
Tire Balancers * Electric Fencing * Equipment AC Unit *
Wooden Cabinets * Expect Lots MORE!

Tractors / Farm & Hay Equipment

International 186 Hydro Cab Tractor, 4-Wheel Drive
Farmall 856 Propane Tractor (1 of 94 Made)
John Deere 4020 Tractor, Dual Remotes
Farmall Super M-TA Tractor
Farmall MD Diesel Tractor
Farmall 400 Diesel Tractor
John Deere 1010 Utility Tractor
International 424 Tractor
International 1066 Cab Tractor
Farmall 460 Tractor
Allis Chalmers D-12 Tractor with Loader
John Deere 510 Heavy Duty Tandem Disc (FD20)
New Holland 616 Rotary Hay Mower on Caddy
IH 430 Square Hay Baler, Wire Tie, Super Slick
24' Hydraulic Pasture Harrow on Wheels
8' Heavy Duty Box Blade
16' Offset Disc
Big Ox 7 Shank Chisel Plow
24' Allis Chalmers Disc
Rome Levy Disc
Several Large Chisel Plows
1630 John Deere Disc
Honda 250 4Trax Four Wheeler
Yamaha Timberwolf Four Wheeler
Aluminum Fuel Tank with Tool Box
1000 Gallon Metal Fuel Tank
Brilliant 6' Seeder
Pasture Drill



Smaller Items of Interest

New Titan 4-Stroke Post Driver in Case * Stainless Sink w/
Hot Water Heater * Tool Chests * Small Propane Tank w/
Hose * Honda 10K Watt Generator * Generac 2400 Genera-
tor * Kubota Side-by-Side Doors * Schaben 60 Gal. 12V
Sprayer w/Booms * AC Lincoln Welder * Welding Leads
* Trailer Ramps * Lg. Trailer Caddies * Spool of 1 1/2" Ca-
ble * Lots of Drive Lines * Fannall Tractor Parts * Super
Snoop * Torch Gauges * Mig Welders * Concrete Tools *
Antique Childs Bicycle * Ladders * Engine Lift * MORE!



AUCTION CONDUCTED BY:
Double O Equipment Auctions
Kenny Osburn
(918) 721-3070

TERMS: CASH or APPROVED CHECK WITH BANK LETTER & POSITIVE ID
ANNOUNCEMENTS MADE DAY OF SALE SUPERSEDE ALL OTHERS
NEITHER OWNER NOR AUCTION SERVICE IS RESPONSIBLE FOR ACCIDENTS OF ANY NATURE

The Hitch N' Post
Antique & Flea Market



Vintage Junky

- 76,000 sq. ft.
- Over 400 Vendors

LARGEST FLEA MARKET IN THE 4-STATE AREA!

Mon-Sat: 10:00 - 5:30 pm
Sunday: **Gone to Church!**
Come Shop for the **WHOLE DAY!**

God Bless America!

401 Commerce Ave.
Commerce, OK
918-675-4519
www.thehitch-n-post.com
David L. Mason - Owner

There's a better way to get attention.



Keep life simple.
Take out an ad.

Auction Sales



New Beginnings ESTATE SALES
OF SOUTHWEST MISSOURI
417-529-9166

MOVING "TAG" SALE IN JOPLIN!
3428 College View Drive
Joplin, MO 64801

Fri. June 23: 9am-4pm
Sat. June 24: 9am-NOON

Whatever didn't fit on the moving truck, the sellers said SELL! Liquidating home furnishings, shed and garage full of tools; golf equipment; sporting equipment; Longaberger Baskets and pottery; brand new Ashley Queen bedroom suite; front load washer and dryer; gun safe; lots of dollar product items and more! SUPER CLEAN and very well maintained items. NOT an auction... all items are priced and tagged for immediate sale.

Terms: Cash, local Joplin metro check, debit and credit cards accepted (4% processing fee). No returns, all sales are final and items are sold as-is, where-is with no warranties expressed or implied. Prices are firm on Friday, 50% on Saturday excluding furniture. See preview photos on our New Beginnings Estate Sales Facebook page or Estatesales.net



Silvercreek Online Auction Service.
Offering Online Auction Service, give us a call to book your Auction.
620-230-5981.

Recycle Your Stuff for Cash in the Classifieds



Call or go online to **browse, buy or sell!**

BUILDING MATERIALS @ AUCTION

SATURDAY, June 24th @ 9:30 AM

BAXTER SPRINGS, KS

2404 Cleveland - Baxter Springs, KS - Corner of 24th & Cleveland, 3 blocks E of 69A on 24th St

IMPORTANT NOTICE - PLEASE CHECK BACK ON AUCTION ZIP, CRAIGSLIST AND/OR FACEBOOK FOR UPDATES RELATED TO POTENTIAL DETOUR DUE TO ROAD CONSTRUCTION

SALE HELD INSIDE REGARDLESS OF WEATHER

◊ DIMENSIONAL LUMBER - treated 2x4's, 2x6's, 2x8's Southern Yellow Pine 2x4's, 2x8's, 2x10's & 2x12's ◊ POSTS - 6x6's ◊ PINE - 1x6 T&G Shiplap and V-Match/Bead Board as well as end match ◊ COMPOSITE DECKING - in multiple colors ◊ OSB SMART SIDE - 4x8 sheets - used for board and batt or soffit ◊ I-JOISTS ◊ RIM BOARD ◊ WHITE PINE - 1x10 and 1x12 ◊ LVL's - various sizes ◊ BACKER BOARD ◊ SHEET GOODS - good selection!!! - 15/32 CDX 4 PLY PLYWOOD; 23/32 ADVANTEC SUBFLOOR; 3/4" x 4'x8' NORBOARD OSB DURAFLOOR; 7/16" HIGH PERFORMANCE OSB ◊ VERSETTA STONE ◊ CULTURED STONE - nice selection of colors and styles ◊ 5/8x4x8 T 111 SIDING ◊ PINE LOG SIDING - milled from 2x8, various lengths ◊ JAMES HARDY SIDING - 6 1/4" wide - A Grade - Warranty; also 7 1/4" wide ◊ PREFINISHED FIBER CEMENT SHAKE SIDING ◊ SM@RT SHAKES ◊ JAMES HARDIE SOFFITT - 16" ◊ SM@RT SIDE SOFFIT - 3/8"x12"x16' ◊ 1x6 BLACK CYPRESS T&G CAR SIDING ◊ JAMES HARDIE TRIM BOARDS - 5/4x6" ◊ PVC TRIM BOARDS - 5/4" in various widths ◊ COMPOSITE DECK TILES - 12x12's ◊ ICE AND WATER SHIELD ◊ CLAY ROOF TILES ◊ HOUSE WRAP ◊ INSULATION ◊ HOT WATER HEATERS - new in box ◊ FAUCETS - DELTA, MOEN, and HOME IMPRESSION brands - Vanity and Kitchen, including pulldown kitchen faucets - NIB - large selection to choose from ◊ APPLIANCES - NEW - as well as Shelf Pulls and Scratch and Dent ◊ WIRE CLOSET SHELVING ◊ LIGHTING - NEW large variety of nice lighting fixtures - including some high end lighting ◊ WINDOWS ◊ KITCHEN CABINETS - multiple sets of cabinets - option of stained or painted including: Shaker Style in Dark Gray, Light Gray and White - all wood - prefinished cabinets. Straight and L shaped sets with some sets also including pantry - some sets also include soft close doors & dovetailed drawers ◊ VANITIES - nice selection of vanities including colors matching Kitchen Cabinets - variety of sizes, up to 5', some including granite tops ◊ PORCELAIN AND CERAMIC TILE - over 20,000 sq ft, with great selection of sizes and colors of tile to choose from including - MOSAIC - nice selection - TRAVERTINE - MARBLE - STONE - including SUBWAY TILE ◊ WOOD LOOK TILE - nice selection of styles and colors in various lengths and widths ◊ HARDWOOD FLOORING - up to 7" wide ◊ PREFINISHED PLANK WOOD FLOORING in 1/2" and 9/16" thickness ◊ SNAP AND LOCK LAMINATE - in small lots ◊ LVT - great selection of glue down LVT as well as RIGID CORE SNAP LOCK ◊ INTERIOR DOORS ◊ TRIM - BASE - CASING - CROWN: pre-primed - various widths and lengths; as well as OAK quarter round, corners, chair rail, cove, base shoe and door stop ◊ STAIRCASE HANDRAILS ◊ ENTRY - PASSAGE - PRIVACY DOOR KNOBS AND LOCKS ◊ 3CM QUARTZ - Maple White in various sizes - countertops - island panels, with & w/o sink cutouts ◊ GRANITE countertops ◊ KITCHEN SINKS ◊ BATHROOM SINKS - new load, wide variety including vessel, undermount and drop in ◊ FREESTANDING BATHTUBS ◊ CEILING FANS - nice selection ◊ PEDESTAL SINKS ◊ TOWEL BARS AND RINGS, TOILET PAPER HOLDERS, ROBE HOOKS, TOOTHBRUSH HOLDERS



COME FOR THE DAY AND SAVE LOTS AND LOTS OF \$

MT. VERNON AUCTION CENTER

• No Buyer's Premium •

MORE COMING IN DAILY - check sites often

For pictures see Mt. Vernon Auction Company on Auctionzip.com (enter ID#29728 at bottom of page) or Facebook
CELL 870-754-4428 • 870-715-5479 • 870-715-2326 (text only)

All items must be picked up day of sale or during one of our posted, scheduled, and announced pick up times following the auction. Thank you!

All announcements made the day of auction will supersede previous advertising.

Real Estate & Living Estate Auction

Saturday, June 24, 2023 • 10:00 AM

8658 Hwy NN, Neosho, MO 64850

DIRECTIONS: SOUTH OF REDDING'S MILL (1 MILE SOUTH OF I-49 ON 86 HWY TO NN HWY) APPX. 6 MILES TO 8658 NN (WEST SIDE) OR WEST OF NEOSHO, MO ON 86 HWY (I-49 & 86) ON 86 HWY, APPX. 2 MILES TO NN HWY. GO NORTH ON NN HWY APPX. 4.6 MILES TO AUCTION ON WEST SIDE.

LUNCH AVAILABLE • WATCH FOR SIGNS • BATHROOM PROVIDED

PROPERTY DETAILS: 20+/- ACRES, 4 BED, 2.5 BATH, 2,194 FINISHED SQFT, 1,536 SQFT UNFINISHED BASEMENT WITH ADDITIONAL HALF BATH, 2 CAR GARAGE & 2 LIVING AREAS, 2 HOT WATER HEATERS, RURAL WATER & WELL, BUILDING SITE ON LAND, RURAL WATER AT ROAD, NEOSHO SCHOOL DISTRICT, TAXES ARE \$1,693.16. OFFERING IN 3 TRACTS: TRACT 1: HOME AND 10 M/L ACRES; TRACT 2: VACANT LAND 10 M/L ACRES; TRACT 3: COMBINED HOME AND 20 M/L ACRES.

3% BUYERS PREMIUM ON REAL ESTATE PAID BY BUYER. BROKER PARTICIPATION INVITED. REALTOR MUST REGISTER POTENTIAL BUYER 48 HOURS. PRIOR TO AUCTION, CALL FOR REGISTRATION FORMS.

REAL ESTATE AT AUCTION SELLS AT NOON

HOUSEHOLD ITEMS: ASSORTED AREA RUGS; KITCHEN APPLIANCES; 2 OIL LAMPS; PORTABLE RADIOS; ASSORTED KIDS GAMES; LARGE LOT OF HOME DECORATOR PICTURES; HOME DECOR ITEMS; SEWING ACCESSORIES; ASSORTED STATIONERY SUPPLIES; FLORAL DECORATIONS; SMALL LOT OF FISHER PRICE TOYS; LOTS OF ASSORTED LINENS & BLANKETS; NORDIC TRACK EXERCISE MACHINE; 2 HANGING LAMPS; ASSORTED SOFT LUGGAGE AND BAGS;; GLASSWARES & DISHES; ASSORTED CUPS AND SAUCERS; CRYSTAL GLASS; ASSORTED FIGURINES; CHINA PLATES & DISHES; LOTS OF ASSORTED POTS AND PANS; CRYSTAL STEAMWARE; LENOX PLATES WEATHERLY; FLAT WEAR AND KITCHEN UTENSILS; KITCHEN APPLIANCES; TUPPERWARE; RUBBER MADE; FARBBER WARE PANS; CORNING WARE; VISION WARE; STEAMWARE AND ASSORTED GLASSWARE; LOTS OF FRUIT JARS AND LIDS; EXERCISE KITS.

APPLIANCES: 2021 AMANA BOTTOM FREEZER W/ ICE 25FT; FRIGIDAIRE GALLERY SMOOTH TOP ELECTRIC RANGE 2 YEARS OLD; MAGIC CHEF MICROWAVE; 8 CUBIC FOOT WHIRLPOOL CHEST FREEZER.

FURNITURE: ROUND OAK TABLE BALL AND CLAW FEET; 6 PATTERN BACK CHAIRS; AUROSONIC WALNUT SPINET PIANO AND BENCH; PAISLEY PRINT OCCASIONAL CHAIR AND AUTO-MAN; GREY PLATFORM ROCKER; BEIGE OCCASIONAL ARM CHAIR; 3 BRASS TABLE LAMPS; GOLD OCCASIONAL CHAIR; MAPLE HEADBOARD W/ BOTTOM STORAGE; SOLID WOOD SEWING MACHINE CENTER TABLE W/ DRAWERS; GREEN WOOD BOOKSHELF; WHITE BOOKCASE FULL SIZE CANOPY BED; PORTABLE CRIB AND DOLL BED; 2 WALNUT NIGHT STAND; QUEEN SIZE SLEEP NUMBER BED; 5 DRAWER CHEST DRESSER; 4 30 IN BAR STOOLS; LARGE HUTCH; METAL SHELVING; OFFICE TABLE DISASSEMBLED; TWO CARD TABLES W/ CHAIRS; OAK FRAME WALL MIRROR; 2 SECRETARY CHAIRS; OAK ADJUSTABLE BOOK SHELVES; 4 DRAWER FILING CABINETS; 9 DRAWER DRESSER BASE; CHROME SHELVES ON WHEELS; FLORAL PRINT COUCH MATCHING OCCASIONAL CHAIR AND OTTOMANS; ASSORTED TABLE LAMPS; POLY FOLDING TABLE.

TOOLS: SEARS 10 INCH RADIAL ARM SAW; ALUMINUM EXTENSION LADDERS; FLEET TOOL SOCKET SET; SHOP VAC; WOOD STEP LADDERS; ANTIQUE MANUAL DRILL PRESS; WALL MOUNT; SCREW JACK; SADD IRONS; 4 DRAWER STORAGE CHEST; 3 1/4 HP 2 GAL AIR COMPRESSOR; POWER PAL PORTABLE AIR COMPRESSOR; OILS PAINTS, LUBRICANTS; SMALL LOT OF ASSORTED HAND TOOLS; LOT OF ASSORTED PAINTS AND STAINS; ASSORTED LARGE LOT OF C CLAMPS, BAR CLAMPS; TWO WHEEL DOLLY; ROUTER; MISC OIL CANS; HANDS SAWS; PIPE CLAMPS; 7 HARDWARE CABINETS & CONTENTS (NUTS, BOLTS, SCREWS); POWER TOOLS; DRILLS; SAWS; SANDER; NEW ELECTRIC CHAIN SAW SHARPENER; WORKMATE TABLE; VARIOUS WOOD WORK TABLES; 3 FORMICA TOP WOOD WORK TABLES.

LAWN AND GARDEN: ASSORTED LAWN AND GARDEN TOOLS; CRAFTSMAN GAS'S BLOWER; LOTS OF ASSORTED GARDEN SPRAYS AND INSECTICIDES; SMALL LITTLE RED WAGON; GARDEN HOSE AND REELS; TROY BILT FRONT TINE TILLER; MANTIS TILLER; DR 6.5 HP STRING TRIMMER; POLY LAWN SPREADER; CREEPERS; GARDEN PUSH PLOW; RUBBER TIRE WHEEL BARROW; CHAINSAW HELMET AND FACE GUARD; RYOBI STRING TRIMMER; SMALL LOT OF ASSORTED T POSTS; SQUARE GALVANIZED HORSE TUB; ASSORTED PLANTERS; SMALL LOT OF CONCRETE BLOCKS; CONCRETE BIRD BATH; APPROX 3 RICK OF SEASONED FIREWOOD; GAS BARBECUE GRILL; 2 METAL LAWN CHAIRS; SMALL LOT OF RED BRICK.

CHAINSAWS: 2007 STIHL MS180 C CHAINSAW; STIHL 029 CHAINSAW; HOME LITE E-Z CHAINSAW.

CAMPING & OUTDOOR: 1973 COLEMAN LANTERN AND BOX; TENTS AND BAG CHAIRS.

ANTIQUES: ANTIQUES DIETZ LANTERN; ANTIQUE GARDEN PLANTER; LEE MCLAIN BASEBALL BAT; ANTIQUE METAL WHEEL.

ARTISTS SUPPLIES: LARGE LOT OF CANVASES, FRAMES, EASELS; ARTIST PAINTS; LOTS OF ASSORTED ART BOOKS & SCIENCE RESOURCE BOOKS; ART MAGAZINE; METAL FRAME EDGES; METAL ART DISPLAY KIT DOUBLE WRAPPING PAPER RACK.

NOTE: DUE TO THE DEATH OF KARL LEISENRING PAM LEISENRING IS SELLING HER HOME, DOWNSIZING AND SELLING ITEMS NO LONGER NEEDED. NICE HOME FURNISHINGS, APPLIANCES, AND HOUSEHOLD ITEMS. NICE SECLUDED, PRIVATE SETTING WITH LOTS OF WILDLIFE!

LIVING ESTATE OF PAM LEISENRING

TERMS: CASH, CHECK, 4% CONVENIENCE FEE FOR DEBIT & CREDIT CARDS. 10%

BUYERS PREMIUM ON ABSENTEE & PHONE BIDS. PROPER I.D. REQUIRED FOR BIDDER NUMBER.

NOT RESPONSIBLE FOR LOSS OR INJURY!

VENTURE GROUP AUCTION

Featuring

BOB LASSWELL

Professional Auctioneer Since 1977

417.850.5444

PREVIEW ONLINE
WWW.VENTUREGROUP.AUCTION



ANY ANNOUNCEMENTS THE DAY OF AUCTION SUPERSEDE ALL PRINTED MATERIAL

SHAUNA NORRIS
Auction Manager
Office Number
417.592.4560

There's a better way to get noticed.

Keep life simple. Take out an ad.



HUNTING OASIS WITH NATURAL SPRINGS Trophy Hunting Opportunity & Potential Income!

HIDDEN SPRINGS GAME RANCH

444 ACRES • BARRY COUNTY

ONLINE BIDDING BEGINS: July 12, 2023

LIVE AUCTION: WEDNESDAY, JULY 19 • 1:00 PM

Crowder College Community Bldg • 4020 Main St. Cassville, MO

AUCTIONEERS NOTE: Hidden Springs Game Ranch is hidden away just north of Farm Rd 2170 in Exeter, MO. This 444.4-acre (m/l) parcel was previously ran as a quality 8' high fence hunting operation with deer/elk/sheep/bison hunts. Great trail system throughout property for hunting, ATV/UTV or horseback riding. After 12 yrs of operation the Greg & Missi Baker family have decided to sell the ranch (currently not in operation and all licenses have expired). Income potential and fence depreciation to buyer.

missourilandandfarm.com



**MISSOURI
LAND & FARM**

VIEWING: June 24, 2023 • 10 to 2

Jeff Quinn • 660-734-3925

Dave Atkinson • 660-788-3333

Greg & Missi Baker, Sellers



SCAN ME

LIQUIDATION AUCTION

Saturday June 24th @ 9:00 am • Sunday June 25th @ Noon

LOCATION: 5525 Highway 59 N Grove, OK 74344. Watch for signs.

Daisy Davis

AUCTIONEERS NOTE: This is a liquidation of the old Don's Swap Shop. The business has been closed since approx 2012 and is very dusty / dirty and the floors are uneven, so please plan accordingly! This will be a 2 day sale with NO SET ITEMS scheduled for either day. Please notice times for both days! Saturday sale will last approx 7-8 hours. We will commence on Sunday where we left off on Saturday and sell remaining items. NEW BIDDER CARDS WILL BE ISSUED ON SUNDAY!

Yard / Shop / Barn items: (2) new 3/4 drive socket sets; Lots of golf clubs; (3) cast iron bells with yokes and dingers; 2 iron dinner bells; barb wire specimens; very old oak beam plow; several humane traps and metal traps; pedal car (needs work); chicken crate; (2) McClellan calvary saddles (rough); wooden pullies; 36 BB guns 2 of which are Red Rider with wooden stocks; lots of small hand tools; cross cut saws; (2) foxhole stoves; cistern buckets; several old blow torches; lots of oil spouts for jars; old hood ornaments; hatchets; axes; long handle garden tools; buck saw; several vices (all sizes); (5) steel wheels approx 4' tall; approx 50 rake teeth; small buggy wheels; sm steel wheels; meat hooks; King Cutter 5 gal gas can; misc gas cans; galvanized waterer; lister plow (no handles); forge table (no bellows); cattle yokes; single and double trees; hames; calf weiners & muzzles; wood wagon tongue; chicken water crocks; Ice tongs; hand saws; pullies; scales; several pairs of spurs; Oxen shoes; Old bull blinders; English metal stirrups; Lots of work horse bits; Harness leather; Dynamite blasting box; looped barb wire; lots of bottle cappers; wooden hammer handles; carbide lights; post office mailbox doors; broad axe heads; Cast iron door steps; (8) cream top milk jugs / carrier; Military shell art; hand tools; platform scales / weights; car ramps; Lots of scrap leather; (4) little red wagons; old snow ski's; Vintage gas pump globe; old fire extinguishers; Large old fire extinguisher on metal wheels; lots of hubcaps and misc car parts.

Misc collectibles: (3) cast iron bath tubs (2 claw foot); (5) round front glass curio cabinets; sm china hutch; LOTS of 1910's-1990's license plates; LOTS of old canning jars most with wire bale lids; several old childs character TV lap trays; Metal signs; Hundreds of kerosene lantern globes of all sizes; (3) car decanters; several milk cans; old dolls; lots of metal bed rails (round and slotted); several old headboards and footboards; Lots of kerosene heaters; very old water can with spout; several brooder heaters; 2 1/2 gal mason jar; approx 50 wire milk crates; antique gumball machine; old mop buckets and wringers; (12) glass towel bars; lots of quality cast iron; all sizes of milk bottles; grapette banks; old sewing machines (some treadle); wash boards; lots of character drinking glasses; small desks; Railway Express metal sign; Hop-a-long Cassidy metal target sign; old coin operated chicken game; ice cream freezers; cast iron boilers; cast iron lard press; cast iron cream separator; Cast iron sausage stuffer; Lots of porcelain pots and pans; antique infant coffin; flower bins for antique cabinets; approx 150 character kids lunchboxes (some with thermos); cast iron pitcher pumps; parts for old school desks; Several metal Tonka Toys; Metal toy tractors; old violin cases; Black americana cast bells; lots of Cuckoo clock parts; several old typewriters; sm Keen Cutter wooden box; lots of vintage door knobs; phonograph horns; old eye glasses; lots of skeleton keys; old hat mold; several nice crock jugs; vintage cigarette stand (needs work); cream can (no lid); large lot of glass lamp shades/globes of all sizes; metal airplane propeller; (2) kerosene sad iron heaters; lots of metal cans (coffee, tobacco, misc); Vintage brass cash register; lots of brass items; Burroughs calculator; Metal baby bed; Lots of old salt & pepper shakers; bicycles; comic books; Girls and Boy Scout patches; Boy Scout canteens; Official Boy Scout bead craft outfit; Boy Scout cooking set; Boy Scout backpack; Girl Scout and Boy Scout books; records; telegraph keys; childs rockers; Lots of Coca Cola items; bird cages; German Swastik youth armband; vintage military medical stretcher; wall pay phone; organ or piano stool; Lots of marbles; cow skull; barber strops; Straight razors; pockt knives; Lots of wooden shoe stretchers; all styles can openers; 16mm films; 105mm shell casings; Old string holder Pat. 1865; View masters with reels; lots of tins; few kerosene lamps & chimneys; (2) formica top tables / chrome band; sm drop leaf dining table; old kitchen cabinet; several small wooden tables; 2 metal file cabinets; Glass prism lamp / extra prisms; LOTS of pop bottles and wooden soda crates; Lots of State plates; State glasses; several sm statues; approx (4) stereoscopes with cards; Old chainmail (rough); Knights armor (upper half); Ty beanie babies; numerous old glass bottles; many small knick knack items.

Vehicles: White 1926 Model T touring 4 door with wooden spokes (as is); Red 1926 Model T with model A wheels and fat man's steering wheel (as is). Several boxes of parts. We will provide Bill of Sale only on vehicles. **THE TWO MODEL T'S WILL SELL ABOUT 12:30 - 1:00 P.M. ON SATURDAY.**

Far too many items to list all antique / vintage / collectible items! We continue to find more items daily as there are MANY boxes remaining to go through! There will be lots of surprise items!

TERMS OF SALE: Cash or check w/positive ID. Credit Cards accepted with convenience fee. Nothing removed until settled for. Auction Company & Owners not responsible for loss or accidents. Restroom available. Said sale day supersedes all printed material. State, City, and County sales tax will be charged. If you use a tax number, Farm or Resale, it MUST be produced sale day to auction company. Concession provided.

Follow us on Facebook "Crown C Auction Service".

Auction conducted by
Crown C Auction Service LLC
Richard Clapp, Auctioneer / Owner

Joe Clapp, Auctioneer/Ringman
ShaeAnna Clapp, Auctioneer/Ringman

918-848-0671

Donna Spaulding, Cashier

Chris Dillingham, Ringman
Gina Dillingham, Clerk

If You Want To Sell,
We're The Ones To Tell!!



Jim Lievens
417-455-5311 • 417-434-4528 Mobile
www.circlelauction.com

AUCTIONEER'S NOTE:
We Have Low Mileage
CORVETTE, BASS BOAT,
Lot Of Tools, Furniture, Yard
Ornaments, Collectibles,
Antiques, Etc!! Check Web
For Photo's! **Do Not Miss!!**
SEE YOU SAT 9 AM!!!

LIVING ESTATE AUCTION

SATURDAY, JUNE 24TH, 2023, 9:00 A.M.
LIVING ESTATE OF MR. JOHN HEMBREE
1624 STRAIT AVE, SENECA, MO

Directions: From Cherokee St. (Main) & K Highway (By Railroad Tracks) Take K Highway East To Strait Ave., Turn Right On Strait Ave., And Go To Sale On Right!! WATCH FOR SIGNS!!

BASS BOAT & CORVETTE: 996 CHEVY CORVETTE, V8, Auto, W/74,000 Miles, RUNS & DRIVES, TITLE, 1985 Fiberglass BASS BOAT, W/140HP EVINRUDE Outboard Motor, Foot Control Trolling Motor, & Live Wells, Plus Trailer, RUNS & DRIVES.

FURNITURE: Cupid Marble Top Table, Oak Coffee & End Tables, TV Table, Table Lamps, Rolling Office Chair, Tractor Seat Stool, TV Cabinet, Sofa Table, Glass Etched Door, Cherry Corner China Cabinet, Brass Floor Lamp, Tube Radio's Cathedral & Others, Doctors Table (ANTIQ), Night Stand, Sundial Table, Pedestal Table, Stereo, High Chair, Charcoal Smoker Grill, Vac's, Area Rugs, Wood Dining Chairs, Bar Stool, Metal Folding Chairs, Baby Changing Table.

TOOLS: Power Mowers, Snow Blower, Gas Leaf Blower, Cordless Drills, Electric Impact, Folding Wagon, Chop Saw, Belt Drive, 12", 3HP, Table Saw, Power Tools Saw, Drills, Sanders, Etc!!

Rods & Reels, Rotozip, Tire Breaker, Shovels, Rakes, Hoe's, Air Compressor's, Drop Cords, Jack Stands, Floor Jack, Hydraulic Jacks, 3 Point Draw Bar, Fishing Tackle & Boxes, Portable Air Tank, Air Stapler & Nailers, Large End Wrenches, Hand Saws, Machette, Levels, Squares, Furniture Clamps, Army Tent, Banjo Taping Machine, Climbing Harness, Kerosene Heater, Wood Wagon Wheel, Barn Lantern, Pole Limb Trimmer, Electric Chain Saw, Bicycle's, Lead Rope, Troybilt Weed Eater, Drill Bits, End Wrenches, Sockets, Ratchets, Screw Drivers, Minnow Bucket, Pressure Washer, Golf Clubs, Pipe Wrenches, Block & Tackle, Pullers, Miter Saw, Vise, Ratchet Straps, Punches & Chisels, Files, Crescent Wrenches, Pliers, Vise Grips, Hammers, Tackle, Come Along, Log Chain, Tow Rope, Paint Gun, Air Hose, Battery Charger, Jumper Cable, Torch Tips, Regulators, Etc!

GLASSWARE & MISCELLANEOUS: LOTS OF MISC. ITEMS!! CHECK OUT WEBSITE FOR FULL LISTING & PHOTOS!!!
WWW.CIRCLELAUCTION.COM & FACEBOOK!!!!

ID required for bidder number - Not responsible for accidents - Lunch - Terms Cash/Visa/MC/Discover - Preview by Appointment

REAL ESTATE & ESTATE AUCTION

Sunday, June 25th, 2023 ~ 1:00 PM

LOCATION: 1191 Southwest 80th Road, Asbury, MO; Directions: From Joplin Go North On 43 Hwy Approx 20 Miles To Southwest 80th Rd Then Go West On 80th Rd Approx 2 Miles To Sale Site. GPS Will Get You There (Watch For Signs)

Auction For Raymond & Phillis Battin Estate

Real Estate Will Sell First At 1:00 PM Real Estate Consists Of 4 Bedroom, 1 1/4 Bath, 2 Story Home With 3 Bedrooms, 1/4 Bath Upstairs, 1 Bedroom & 1 Bath As Well As Kitchen, Dining, Living, Family & Utility Rooms Downstairs. Home Has Newer Metal Roof & Siding. Home Does Need Some Updating On Inside But Is A Good Solid Home With Good Bones. Home Is Setting On Approx 21 Acres M/L That Has Some Open Grass Area As Well As Some Fence Line Type Timber. Has 2 Ponds, As Well As Good Creek Running Through West & South Side Of Property. Property Also Has 1 Barn, 1 Lean To 3 Bay Barn, 1 Chicken Coop House Building & 1 Other Outbuilding. Also Has Storm Cellar & Well House. This Is An Outstanding Property That Would Make A Great Small Farm Or Perfect For Hunting Lodge As I Was Scanning The Property I Saw Over 10 Deer That Were Bedded In Field. Great Property!!! To Preview Contact Bill At 417-214-0093. Terms: 10% Down Day Of Sale With Signed Contract And Balance Due In 45 Days Or When Closing Date Set By Abstract Office. Seller Has The Right To Accept Or Reject Any And All Bids.

Antique, Modern Furniture & Appliances Ant Hotel Type Washstand, 2 Ant Dressers, Ant Barnwood Shelves, Ant Gentleman's Dresser Ant Oak Organ, Ant Iron Bed, Ant Kitchen Table, Several Ant & Retro Lamps, Ant Leather? Sewing Machine, Ant Wood Easel, Ant Pictures & Paintings, Ant Hampers, Prim Drop Leaf Table W/2 Center Drawers, 2 Ant Cast Iron Heat Stoves, Prim Wood Desk Several Ant Sm & Prim Tables, Prim Shelves, 2 Bamboo Shelves, Old Rocking Chair, Prim Doors & Windows, China Hutch, Retro Dresser, 2 Retro Chest Of Drawers, Dual Recliner Couch, Heaters, Cast Iron Indoor Wood Heat Stove, Refrigerator, Gas Cook Stove, 20 Cu Ft Chest Deep Freezer, Other Items Not Listed

Antiques, Primitives & Households Ant Store Bust, Old Metal Toys, Cast Iron Skillets & Pcs, Ant Wagon, Ant Wringer Washer, Ant Washtub On Stand, Galvanized & Graniteware Pcs, Old Tins, Old Cream Cans, Old Wood Advertising Boxes, Ant Jars & Bottles, Old Iron Wheels, Old Insulators, Lg Lot Of Quilting Items & Material, Lg Lot Of Old Glassware Of All Kinds, Over 75+ Boxes & Totes Unsearched In Storage Building Unable To See, Hundreds Of Surprises Sale Day

Trailer House, Propane Tank, Farm Items, Riding Mower, Tools & Outdoor Regular Size Single Wide Trailer House To Be Removed (Needs Work), 500 Gallon Propane Tank (Nearly Full), Huskee 42" Riding Mower, Hay Wagon, Some Panels, Steel Posts, Cattle Water Tank, Approx 25+ Square Straw Bales Of Hay, Sm Metal Feeders, Some Scrap Iron, Table Saw, Scroll Saw, Sm Hand Tools, Sm Electric Tools, Toolboxes, Wheel Barrows, Push Mower, Gas & Electric Weed Eaters, Some Lumber, Fishing Poles, Life Jackets, Yard Swings, Wood Racks, Composter, Outdoor Furniture, Concrete Outdoor Décor, Other Items Not Listed

Terms: 10% Down Day Of Sale With Signed Contract And Balance Due In 45 Days Or When Closing Date Set By Abstract Office. Seller Has The Right To Accept Or Reject Any And All Bids. Also Selling Trailer House, Propane Tank, Farm Items, Riding Mower, Antique, Modern Furniture, Appliances, Antiques, Primitives, Households, Tools & Outdoor Items. See Next Weeks Paper For Complete Listing.

NANCE AUCTION SERVICE

No Matter How BIG or small We Do Them All!!

Col. Bill Nance 417-214-0093 nanceauctionservice.com Sean Beazley 417-247-6754

ADVERTISE YOUR Flea Market or Antique Store in the Antique & Flea Market Directory. Call Billie for more information and special pricing.
417-624-4100.

ESTATE AUCTION

Saturday, June 24th, 2023 ~ 9:00 AM

LOCATION: Sheldon Community Building, 6th & Main, Sheldon, MO (Watch For Signs)

Auction For James Dunfield Sr.

Antique & Modern Furniture: Ant Maytag Wringer Washing Machines, Ant School Desk, 1976 Bicentennial China Cabinet, Ant Dressers W/Mirrors, Ant Trunks, Ant Stand Up Ash Trays, Ant Floor World Globes, Ant Pictures, Singer Desk Sewing Machines, 1970's Wooden Full Size Bed Frame, Metal Double Bed Frame, Curio Cabinet, Glass Top Table W/Folding Legs, Desk, Bakers Rack, Roll Top Desk, Metal Tan Desk, Plastic Utility Sink W/Faucet, Other Items Not Listed.

Antiques, Collectibles & Households: Ant Iron Wheels, Ant Hand Tools, Ant Crocks, Galvanized Pcs, Ant Lantern, Whiskey Barrel, Gumball Machine, Ant Show Repair Brackets/ Holders, Cast Iron Pcs Inc Griswold, Wagner, Lodge, Cast Iron Trivets, Sad Irons, Butter Churns, Ant Sewing & Knitting Needles, Ant Blue Jars & Other Jars, Ant Bottles, Old Marbles, Ant Dinnerware Sets, Ant Sears Merry Mushroom Canister Set, Ant School Wall World Maps (Pull Down Style), Pyrex Colored Bowls & Baking Dishes, Ant Kitchen Utensils, Metal Cookie Cutters, Sterling Silver Pitchers & Utensils, Quilts, Tablecloths & Doilies From 1950-1980, Crocheted Blankets, Towels & Plate Holders, Carnival Glass, Blown Glass Bowls, Decorative Wall Plates, McDonald's Happy Meal Glasses Inc Garfield, Peanuts, Disney, Campbell's Soup Cups, Bowls & Sets, Coca Cola Collectibles Inc Stools, Glasses, Dishes, Metal Food Trays, Pots, Pans, Decanters, Belt Buckles, Costume Jewelry, Seashells, Lead Crystal Vases & Trinket Boxes, Lg Lot Of Country Records Inc 45's, Fur Women's Wraps, President Lincoln Statues & Busts, Sm Kitchen Appliances, Glass Punch Bowl Sets, Stuffed Bobcat, Other Items Not Listed.

Tools & Outdoor Items: Ant Motorcycle Jack, Ant Sears Seed Spreader, Air Compressors, Grinder On Stand, Air Jack, Sm Hand Tools, Sm Electric Tools, Yard Tools, Pickup Truck Toolboxes, Gas Cans, Other Items Not Listed.

This Auction Will Be Larger Than Appears With 3 Storage Building Stacked Full Floor To Ceiling That Have Not Been Gone Through. Sure To Be Several Surprises Sale Day!!!

Auctioneers Note: It Is An Honor To Be Conducting This Auction For The Dunfield Family. This Auction Will Be Larger Than Appears On Sale Bill. There Are Excellent Antiques, Collectibles & Primitives In This Auction. There Are Also Hundreds That Are Not Listed. Some Excellent Antique & Modern Furniture As Well. Will Be More Tools & Outdoor Items Added Sale Day Also. There Are 3 Large Storage Buildings Stacked Floor To Ceiling That Have Not Been Gone Through. Over 60 Years Of Collecting. Auction Will Be Held Indoors Out Of Weather & Heat. Please Plan Now To Attend. **Sale Order: Antique & Modern Furniture Sells First Followed By Antiques, Collectibles & Households. Tools & Outdoor Items Will Finish Auction. See Ya There!!!**

Terms: Cash or check with proper ID. Now accepting most major credit cards. Nothing removed until settled for. Statements made the day of sale takes precedence over printed material. Everything sold as is where is. Not responsible for accidents. Restroom available. Concessions Provided. Check our website for upcoming auctions and for additional pictures!!

NANCE AUCTION SERVICE

No Matter How BIG or small We Do Them All!!

Col. Bill Nance 417-214-0093 nanceauctionservice.com Sean Beazley 417-247-6754

Want another chance with potential customers who have visited your website and left without taking action?

We can do that!
Site Retargeting
from The Big Nickel.



CONTACT A
Sales Representative
at 417-624-4100
TODAY to get started!

GUNS, AMMO, KNIVES & MORE



1 **LIBERTY**
 Mon-Sat 10am-6pm
 530 W. Fir Rd
 Carthage, MO 64836
 417-358-5700
 LTGUNSHOP.COM
 GUNS-AMMO-SUPPLIES-CONCEALED CARRY TRAINING

2 **THE COIN COLLECTOR**
 Dave Sorrick, Mindenmines, MO
SILVER-GOLD-COIN ESTATES
 620-423-6600
 www.bordertownauctionhouse.com

3 **GUNS & AMMO**
 BUY • SELL • TRADE
QUICK DRAW GUN
 601 South Kyler, Monett MO • 417-354-8633

4 **STEVE'S TRADING POST**
 JOPLIN, MISSOURI
 4324 South Main
 417-782-9600

5 **MAD MAN MOTOR GUN & PAWN**
 "...the right of the people to keep and bear arms shall not be infringed."
 401 WEST COLER
 NEOSHO, MO 64850
 417.355.2514

**YOUR AD COULD BE HERE!
 CALL 417-624-4100**

Antique & Flea Market Directory

1 **THE HITCH N' POST**
 www.thehitch-n-post.com
 David L. Mason
 Owner
 401 Commerce Ave.
 Commerce, OK
 918-675-4519
 Over 400 Booths & Show Cases
 Hours:
 Monday-Saturday 10am - 5:30pm
 Gone To Church on Sundays
 76,000 sq. ft. • Largest on Route 66

2 **Pitiful to Posh**
 110 W. Broadway, Monett, MO
 Tues • Sat 10-5, Sun 1-5
417-236-5664
 Boutique, Antiques, Collectibles,
 Repurposed Vintage Furniture

3 **THE FINICKY FOX**
 ANTIQUES AND UPSCALE FLEA
 Mon-Sat 10am-6pm, Sun. 12-5pm
417-392-0482
 534 W Fir Rd, Carthage, MO 64836
 finickyfox.net • find us on f

4 **Saviors of Rust Flea Market**
 Spaces Starting at \$20 a month
 Open Tuesday-Saturday, 10am-6pm
 Hwy 59/421 Maple, Chetopa KS
620-432-1770
 Like us on Facebook

LIMITED SPACE AVAILABLE!
 Hurry! Call today to get your spot and start reaching more customers in the 4-State Area!

5 **JODYJO'S FLEA MARKET**
 1708 S. MAIN
 Joplin, MO 64804
 Wed-Sun 10am-5:30pm
417-438-4533

6 **Somewhere in Time ANTIQUE MALL**
 719 W. Walnut • Rogers, AR
 * Located in the old Shelby Lane Mall *
 479-636-0474
 Open: Wed-Thu 10-5 • Fri-Sat 10-6 • Sun 12-5
 somewhereintime.am@att.net

7 **Rusty Gate Flea Market**
 417-342-9315
 484 MO-76
 Cassville, MO

8 **PICKERS' POST**
 201 W. 7th St.
 Galena, KS 66739
 417-529-5744
 Wed-Sat. 10am-5:30pm
 Like us on Facebook

Call Billie @ 417-624-4100

MAHINDRA



#1 Selling Farm Tractor In The World!**

7YR Powertrain Warranty on Most Tractor Series

0 Down, 0% for 72 Months wac On These Models, *EXTENDED THRU JUNE!!!*

MAHINDRA eMax20S HST

20HP, 4WD,
w/Loader,
Hydrostat Trans

\$211³⁰^{*}
/MO.



MAHINDRA eMax20S HST w/ 54" Belly Mower

20HP, 4WD, w/Loader,
Hydrostat Trans

\$253⁰⁰^{*}
/MO.



MAHINDRA 1626 SHUTTLE

25HP, 4WD, w/Loader,
8x8 Shuttle Trans

\$296⁰⁰^{*}
/MO.



MAHINDRA 1626 HST

25HP, 4WD, w/Loader,
Hydrostat Trans

\$316⁹⁰^{*}
/MO.

MAHINDRA 2638 HST

38HP, 4WD,
w/Loader,
Hydrostat Trans

\$372⁴³^{*}
/MO.



MAHINDRA 4540 4WD

41HP, 4WD,
w/Loader, 8x2
Gear Trans

\$391⁸⁸^{*}
/MO.



MAHINDRA 1626 SHUTTLE w/ Backhoe

25HP, 4WD, w/Loader,
8x8 Shuttle Trans

\$407²⁰^{*}
/MO.



MAHINDRA 4550 4WD

50HP, 4WD,
w/Loader, 8x2
Gear Tran

\$419⁶⁵^{*}
/MO.

Tatum Motor Company

FARM TOOLS SINCE 1889

931 N. BUS. HWY. 71
ANDERSON, MO
417-845-3563
HOURS M-F 8-5 • SAT 8-NOON

1033 W. HENRI DE TONTI BLVD
(412 WEST), TONTITOWN, ARK
479-361-9488
HOURS M-F 8-5 • SAT 8-NOON

**2018 data including all Mahindra Group Brand Sales

*PRICE PROGRAMS SUBJECT TO CHANGE



www.tatummotor.com
e-mail: tatumtr@olemac.net

MAHINDRA SUPERIOR PERFORMANCE:

• Heavy-duty components: **Tough & rugged... Keep right on performing day after day.**

• Sturdier chassis: **Greater stability... Keeps you safe while handling rigorous work.**

687061jn

S A L E S • S E R V I C E • P A R T S