

CELEBRATING  
OVER  
**40**  
YEARS



Established 1975

# BIG NICKEL

THURSDAY,  
DECEMBER 22, 2022

© Phillips Media Group, Inc. 2021. All Rights Reserved

2918 E. 20th St. • Joplin, MO 64804  
417-624-4100

www.bignickel.com

Volume XLVII Issue 51



**HOT SPOT**  
Classifieds



We have opened a new showroom so you can get a new bathroom.

**\$500 OFF** tub or shower conversion  
**\$1000 OFF** complete bathroom remodel

Visit rebath.com for full terms & conditions. Locally owned and operated franchise.

At Re-Bath, we design beautiful, functional bathrooms—and provide the quality products to finish the look. Best of all, our licensed, insured, locally operated teams complete projects in days, not weeks. And now, you can save with our Grand Opening discounts. Schedule your FREE in-home consultation today.

Neosho  
(417)427-3885  
4400 Doniphan Dr.  
Neosho, MO 64850



Proudly Serving:  
SWMO • NWA • SEK/NEO

Complete Bathroom Remodeling  
Tub & Shower Updates  
Aging & Accessibility Solutions

**BILL BUYS Joplin Houses**  
(64801-64804)  
For FULL Price.  
417-580-0007.

**ATTENTION!**  
\$ \$ \$  
BUYING Classic antique cars and trucks. Running or not. Also gas pumps, tractors, farm equipment, old signs, and running newer vehicles. I pay cash up to \$1000/up. I buy one or all on property. Honest, trustworthy, and fair.  
Call ME! 417-234-5154.

**WANTED**  
BUYING JUNK CARS! We pay cash! No title needed. We pick up. Call/text 918-325-0791.  
**WWW.BIGNICKEL.COM**

**CLINT RENNER LOGGING**  
Specializing in Walnut, oak and ash. Guaranteed bids, will pile brush, top prices paid. Don't sell too cheap! Honest, Reputable, 3rd generation logger. Call today for free estimate. 417-439-7954.

**GOLD & SILVER OF JOPLIN WE PAY MORE!**  
•Gold •Silver •Diamonds •Coins  
Estate Buyers • Free estimates • 50 Years of experienced buyers.  
**Discreet, Honest and Trustworthy.**  
**NEW LOCATION**  
105 N. Rangeline, Suite 2 (US Bank, lower level, next to mall)  
Joplin, MO 417-553-0643

**BE AN EARLY BIRD!** Place your ads before Monday and beat the rush!

**GOT JUNK? LLC**  
Paying cash for junk cars. Range \$300-\$500 for complete cars. Free pick-up. Scrap yard with truck scale. 3 miles south of Noel, MO. Opened Tues-Sat.  
417-456-2141

**Grumpy Grandpa HANDY MAN SERVICE**  
Insured and Bonded.  
417-793-4078.

**NEED TO SELL YOUR HOUSE OR PROPERTY?** Get the best coverage around. Call the Big Nickel and our helpful representatives will assist you in creating your ad. You can even pay over the phone.  
Call 417-624-4100.

Please place classified ads on The Big NICKEL website. Our web address is www.bignickel.com

**Want to BUY Junk cars and trucks! Paying top dollar! You Call- We Haul!**  
417-626-2277.

**HARDWOOD PRATER PRODUCTS**  
EST. 1983  
Sawmill/Logging 918-919-9741  
**We Buy Standing Timber**  
918-919-9764

**BIG NICKEL ads sell!** Call for more information and specials.  
417-624-4100

**PROFESSIONAL POWER DR DONE RIGHT**

## YEAR END BLOWOUT!

**DR PRO26 FIELD & BRUSH MOWER**

- 14.5 Briggs Engine
- Electric Start
- Power Steering
- Cuts 2.5" Saplings, 4' High Grass, 8' High Weeds & Brush

**ONLY \$2,600**  
ON IN-STOCK MODELS ONLY  
WHILE SUPPLIES LAST

**GATEWAY FARM EQUIPMENT**  
9723 GATEWAY DRIVE • NEOSHO, MO  
417-451-0821 • www.gfeneosho.com

## END OF YEAR GRANITE SALE

**18 Colors to Choose From**  
**Starting at \$51 sq ft Installed**  
(While Supplies Last)



- Granite -Choose from 18 Colors
- Quartz -Check website for available colors

**NEOSHO MARBLE**  
Family Owned and Operated Since 1991

**www.neoshomarle.com**  
SHOWROOM LOCATION

18414 Highway 59, Neosho, MO 64850 | 417-455-0470 | M-F 8:30 - 4:30



The Big Nickel is published every Thursday.  
© Phillips Media Group 2021. All Rights Reserved

**BIG NICKEL**  
2918 E. 20th • P.O. Box 1567 • Joplin, MO 64802  
417-624-4100 • Fax: 417-621-0287  
EMAIL: [classified@bignickel.com](mailto:classified@bignickel.com)  
[www.bignickel.com](http://www.bignickel.com)

The publisher reserves the right to edit, classify, or reject any advertising copy. The Big Nickel assumes no financial responsibility for typographical errors in advertising or for omission on any advertisement further than the amount received for payment of such advertising in which the error occurred. Advertisers should check their advertising for accuracy when ad appears. The Big Nickel is not responsible for errors after the first insertion. One copy FREE per reader. Additional copies available only upon request. Payment by check authorizes The Big Nickel to electronically collect returned checks, plus \$25 service charge. Stopped or cancelled classified ads will receive an in house credit, good for 12 mos. No Cash/Credit Card Refunds! Copyright 2020. All rights reserved.

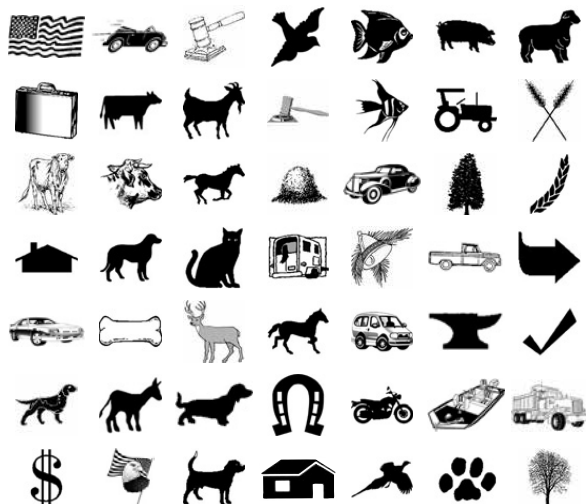
## Big Nickel Classified Options

To place a classified Call 417-624-4100,  
e-mail [classified@bignickel.com](mailto:classified@bignickel.com)

When you place a classified with the Big Nickel you have many options to enhance your classified and make it stand out above the others. Here are a few of the options available:

- Boxed \$2.00 • Bold & Capitalize [First 5 Words] \$2.00
- Graphic Options \$5.00 ea. • Super Graphic \$5.00
- Include Email address \$2.00 • Add a Picture \$5.00
- Include URL \$2.00 • 100% Reverse [Boxed/Boldcaps] \$5.00

### Some of our Available Graphics



## Available Classifications

### A Section

#### MERCHANDISE

Miscellaneous MERCH  
Free  
Appliances  
Arts & Crafts  
Bargain Column  
Building Supplies  
Clothing  
Computers/Accessories  
Electronics  
Furniture  
Hobbies  
Jewelry  
Musical Instruments  
Office Equipment  
Pawn & Thrift  
Sports Equipment  
Wanted-Merchandise  
Pets & Supplies  
Lawn & Garden  
Antiques & Collectibles  
Flea Markets  
Wood & Accessories

### ANNOUNCEMENTS

Community Events  
Thank You  
Card of Thanks  
In Memoriam  
Lost & Found  
New Businesses  
No Hunting or Tres-

passing  
Notices  
Personals  
**SERVICES**  
Accounting-Services  
Air Conditioning/Heating  
Alterations & Sewing  
Appliance Repair  
Auto Repair  
Backhoe/Bulldozer  
Bush Hogging  
Chat/Diri/Gravel  
Child/Elderly Care-Ser-  
vices  
Cleaning  
Computer  
Construction-Services  
Educational/Instruction  
Electrical/Plumbing-Ser-  
vices  
Funeral Needs  
Hauling / Moving  
Health/Beauty/Fitness  
Home Services  
Health Care  
Internet & Web Sites  
Lawn/Garden/Landscape  
Legal Services  
Livestock-Services  
Miscellaneous Services  
Music  
Painting  
Photography

Power Washing  
Remodeling  
Roofing  
Signs & Lettering  
Storage Units  
Stump Root Removal  
Taxidermy  
Transportation-Services  
Tree Service  
Welding  
**EMPLOYMENT**  
Help Wanted  
Accounting-EMP  
Agriculture  
Cashier  
Cleaning/Janitor  
Clerical  
Child/Elderly Care-EMP  
Computer Tech  
Construction-EMP  
Education  
Electrical/Plumbing-EMP  
Hotels/Restaurants  
Industry  
Work Wanted  
Maintenance  
Management  
Mechanic  
Medical/Dental  
Miscellaneous EMP  
Opportunities/Training  
Professional  
Retail

Sales  
Seasonal  
Transportation/Driv-  
ers-EMP  
Welders  
Employment Online Only  
**FINANCIAL**  
Business Opportunities  
Insurance & Savings  
Investments  
Loans  
Services  
**REAL ESTATE SALES**  
Homes For Sale  
Mobile Homes For Sale  
Acreages & Lots-Sales  
Recreational For Sale  
Business Property  
Condos/Townhouses-Sales  
Foreclosures  
Homes For Sale By Owner  
Investment Property  
Other-RE Sales  
Wanted For Sale  
**REAL ESTATE RENTALS**  
Acreages & Lots-Rental  
Apartments  
Condos/Townhouses-Rental  
Duplexes

Homes For Rent  
Mobile Homes For Rent  
Office/Commercial  
Rentals  
Other-RE Rental  
Recreational For Rent  
Roommates Wanted  
Wanted Rentals  
**RECREATION**  
Accessories-Recreation  
ATV's  
Boats & Motors  
Campers & Trailers  
Motorcycles  
Other-Recreation  
Parts & Services-Re-  
creation  
Wanted-Recreation  
**TRANSPORTATION**  
Automobiles  
Trucks, 4x4's, SUV'S  
Accessories-Transporta-  
tion  
Aircraft  
Antiques & Classics  
Commercial Vehicles  
Heavy Equipment  
Parts & Services-Trans-  
portatio  
Vans & Buses  
Wanted-Transportation

## A Section Index

**MERCHANDISE**.....Page 02  
Miscellaneous MERCH.....Page 02  
Pets & Supplies.....Page 03  
Lawn & Garden.....Page 03  
Flea Markets.....Page 03  
Wood & Accessories.....Page 06  
**SERVICES**.....Page 05  
Construction-Services.....Page 09  
Electrical/  
Plumbing-Services.....Page 09  
Miscellaneous Services.....Page 05  
Transportation-Services.....Page 07  
Tree Service.....Page 09  
**EMPLOYMENT**.....Page 09  
Mechanic.....Page 09  
Miscellaneous EMP.....Page 09  
Transportation/  
Drivers-EMP.....Page 09  
**REAL ESTATE SALES**...Page 09  
Homes For Sale.....Page 09  
Mobile Homes For Sale.....Page 10  
Acreages & Lots-Sales.....Page 10  
Homes For Sale  
By Owner.....Page 10  
Other-RE Sales.....Page 10  
**RECREATION**.....Page 10  
Campers & Trailers.....Page 10  
Motorcycles.....Page 10  
**TRANSPORTATION**....Page 10  
Automobiles.....Page 10  
Trucks, 4x4's, SUV'S.....Page 10  
Antiques & Classics.....Page 10  
Heavy Equipment.....Page 10

Do you own a mobile home and need to sell quickly?  
**CASH BUYERS!**

We buy and sell **MOBILE HOMES!**

Let us find the right **MOBILE HOME** for your land or in a park.

**WE SPECIALIZE IN INFILLING MOBILE PARKS!**

**MIDWEST MOBILE HOME BUYERS**

913-713-8009 MRLee [www.buyingmobilehomes.com](http://www.buyingmobilehomes.com)



### Miscellaneous

**ATTENTION!**  
**2ND DAYZ FURNITURE and MORE**  
210 W. Main  
Sheldon, MO  
Clean used furniture.  
Small town store,  
fair prices.  
Look us up on Facebook.  
417-279-2568.

### Miscellaneous

**WANTED**  
BUYING SEASONED fire-  
wood in large amounts.  
417-846-3325,  
479-721-4119,  
417-312-7808.

COMPOST, \$5 a bucket  
load. We will load if nee-  
ded. Goodman, MO.  
417-850-8016.

### Miscellaneous

**WANTED**  
**CASH PAID** for unwanted  
R-12 Freon. Tim  
918-260-0020.

HANDICAP ALUMINUM  
ramp, used, 58' Rampit,  
\$1000; Cash or best offer.  
Hoveround power chair  
MPV5, used, \$500.  
417-499-6526 text only.

GOT OLD BATTERIES LYING AROUND? TURN THEM INTO CASH!  
Lead acid vehicle batteries  
**CALL FOR PRICING!**

**CASH FOR BATTERIES**



Rogers, AR • 479-631-2346  
Joplin, MO • 417-624-2421  
Golden, MO • 417-271-3801  
Springfield, MO • 417-889-5245

**Battery Outfitters**  
YOUR NEIGHBORHOOD BATTERY STORE

**LOOK!**

**ROCKY-MART, LLC**  
Your local General Store.  
Prices range from \$1 on  
up.  
21841 E. Hwy. 76.  
Rocky Comfort, MO.  
Call 417-652-3538  
or 417-847-7518

**RUSTIC CIRCLE CUT**  
wood flooring, tongue &  
groove, 3"-6" wide,  
mixed oak.  
Chapman Sawmill  
417-438-5507.

BOOK NOW FOR WINTER! • NEW LOWER PRICES! • BOOK NOW FOR WINTER! • NEW LOWER PRICES!

**GARAGES & MORE**

Licensed • Bonded • Insured  
Servicing Missouri, Oklahoma, & Kansas

**30x40x10**

- (2) 10x9 Overhead Doors
- (1) Entry Door
- 4" Reinforced Concrete Floor

Only \$29,392\*

\*Travel and taxes may apply  
Price subject to change due to rising materials cost.

**30x50x10**

- (2) 10x9 Overhead Doors
- (1) Entry Door
- 4" Reinforced Concrete Floor

Only \$33,500\*

\*Travel and taxes may apply  
Price subject to change due to rising materials cost.

**29-gauge metal • Engineered Trusses**  
**40-year paint • Treated square posts**  
**22 colors • Reinforced concrete floor**  
**• Double-Bubble Insulation Available**

[www.garagesandmoreonline.com](http://www.garagesandmoreonline.com)

Windows & doors can be added to these Packages.  
We no longer build in ARKANSAS

Jonathan 417-455-4633  
Marcus 417-455-3412

BOOK NOW FOR WINTER! • NEW LOWER PRICES! • BOOK NOW FOR WINTER! • NEW LOWER PRICES!



# HOLIDAY GIFTS!



## THE CORN POPPER

32 of the "Best Popcorn Flavors You Ever Tasted"

Sold in Bags & Cans, Popcorn Balls, Cotton Candy, etc.

Huge selection of Holiday Gift Tins including your favorite sports teams now available inside 420 Releaf or at our main Tulsa location. Serving Tulsa and beyond for 40 years!



### 420 RELEAF

Large selection of T-shirts, Hoodies, smoking accessories, the latest gadgets, all kinds of gift ideas and grow supplies.



**420 Releaf**  
21 W. 3rd St  
Grove, OK 74344  
918-791-3420  
420releaf.com

**The Corn Popper**  
5584 S Garnett Rd  
Tulsa, OK 74146  
918-250-9317  
cornpopper.com

## RANCH TIME ACCESSORIES

LOOK GREAT FOR LESS...

- ★ CUSTOM HATS
- ★ HAND MADE BOOTS
- ★ WILD RAGS
- ★ WESTERN DECOR
- ★ COWHIDES & GIFTS
- ★ PURSES & WALLET

BATTLEFIELD MALL Springfield, MO    Open Mall Hours    NORTH PARK MALL Joplin, MO  
417-635-7777

## FAIRVIEW DISCOUNT

Groceries and More



Mon, Tue, Wed, Fri..... 8AM - 5PM  
Saturday..... 9AM-3PM  
Closed Thursday & Sunday

Amos Yoder  
31536 Palm Rd.  
417-632-0901

**15 WORDS \$11.75 - CALL THE BIG NICKEL TODAY AT 417-624-4100!!**

## BUDGET BOX

MOBILE STORAGE

417-782-7788



Dry, Secure, & Rodent Tight!!

5745 Hwy 43, Joplin, MO  
(1 1/4 mi south of Petro on Hwy 43)



## Lifetime Warranty

417-825-5551  
www.windowsforlessmo.com

### Miscellaneous



JOPLIN, MISSOURI  
midweststormshelters.net.  
0% Financing available to 12 months. ATSA CERTIFIED storm shelters. 10 year warranty. Picked up Concrete units starting at \$3100 Packages with installation starting at \$4250. Includes taxes and digging. Steel Safe Rooms starting at \$3755 +tax installed. Serving the entire 4-State area and beyond for 18 years. See us at 12423 Hwy. 59, Neosho MO 417-781-9718

SOUTHWEST CONTRACTORS  
YOUR LOCAL metal roofing contractor. Various colors available. Free estimates. General construction.  
417-434-3266.

### Pets & Supplies



(3) MALE FRENCH BULLDOG PUPPIES. 1st shots, wormed, registered, \$800. 918-325-0828 or 918-678-7079.

8 MONTH OLD male German Shepherd, neutered, all shots, microchipped. FREE to a loving home. 620-704-6130.

8 WEEK OLD male German Shepherd, will have 1st shots, \$2000. Parents are AKC registered. For pics/questions call 417-214-3911.

BASSET HOUND puppies and adults, multiple colors, might trade for whatever? 417-650-0402.

### Pets & Supplies



13 week old AKC registered Bloodhound pups ready to go. 417-385-8972. Check out our Facebook page for more photos at Peaceful-Valley-Puppies-Bloodhounds.



ACA BOSTON Terriers, (3) females, \$750; (3) males, \$500. UTD shots/wormings. Call or text 918-557-8924.

AKC REGISTERED Golden Retriever Puppies, ready Jan. 19th. UTD shots/worming, \$400. 417-660-5071.

AKC STANDARD POODLE PUPPIES, \$800; Mini Schnoodle puppies, \$450. Vet checked, healthy, current shots. 417-393-6801.

BERNESE MOUNTAIN dog pups, 6 months old, AKC registered, UTD on shots, \$500 each. 417-844-2516.

## GET READY FOR MOWING

Bring Your Mower In Now For Service:

**\$100 MID-MOUNT** (plus parts)    0% Financing Available on ALL NEW MODELS (with approved credit)

**\$125 FRONT-MOUNT** (plus parts)



NewCo Service  
11989 Homer Lane  
Neosho, MO  
417-451-2660

Call Jeremy for Pick up & Delivery Options

### Flea Markets



## The Hitch N' Post

Antique & Flea Market



Vintage Junky Great Christmas Gift Ideas!

- 76,000 sq. ft.
- Over 400 Vendors

LARGEST FLEA MARKET IN THE 4-STATE AREA!

Mon-Sat: 10:00 - 5:30 pm    God Bless America!    401 Commerce Ave. Commerce, OK 918-675-4519  
Sunday: Gone to Church!    Come Shop for the WHOLE DAY!    www.thehitch-n-post.com  
David L. Mason - Owner


### Pets & Supplies



AKC GERMAN SHORT-HAIR Pointer pups, shots/wormed, papers ready. Will meet to show, ONLY \$300! 620-515-3243.



BORDER COLLIE puppies, 8 weeks old Dec. 14th, wormed, out of good working stock, \$100. 417-262-3695.



AKC Registered Labs. Black & Yellow. UTD Vaccinations/Wormer. Ready Dec. 7th. Can hold till Christmas, \$300. Call/Text 417-850-4082.

### Lawn & Garden

### Pets & Supplies



APRI REGISTERED Cocker Spaniel puppies, \$600. 417-540-2912.



AT STUD: "Indigo" Grand Champion CGC. Call Beth at Sugar Creek Kennels 706-248-7932 in Bella Vista Arkansas for more information.


BEAUTIFUL WHITE American Eskimo, 3 year old male, with papers, not neutered, \$125. 417-435-6645.



COCKAPOO PUPPIES, 3 males and 1 female. 8 weeks on December 11th. 417-674-0616.



ENGLISH BULLDOG/ Shih-Tzu cross puppies, available Jan. 20th, will be APRI papered. (3) lilacs, (3) blacks. Prefer Text 918-919-9014.




ENGLISH BULLDOG/ Shih-Tzu cross puppies, available Jan. 20th, will be APRI papered. (3) lilacs, (3) blacks. Prefer Text 918-919-9014.



PERFECT CHRISTMAS GIFTS TOY RAT Terrier, \$500; AMERICAN BULLIES, shots and wormed, ready to go, \$300. All farm raised. Miniature donkey boys, \$300. 918-253-7763.

FREE KITTENS, mother is Manx. Very cute and playful. Many colors. 417-658-5280. Leave message if no answer.



FREE KITTENS, mother is Manx. Very cute and playful. Many colors. 417-658-5280. Leave message if no answer.

WWW.BIGNICKEL.COM



# Antique & Flea Market Directory

**1 THE HITCH N' POST**  
www.thehitch-n-post.com  
David L. Mason  
Owner  
401 Commerce Ave.  
Commerce, OK  
918-675-4519  
Over 400 Booths  
& Show Cases  
Hours:  
Monday-Saturday 10am - 5:30pm  
Gone To Church on Sundays  
76,000 sq. ft. • Largest on Route 66

**2 OPEN 7 DAYS A WEEK**  
**Cimarron Antique Mall**  
144/Exit 29 • Sarcoxie, MO  
What do you need?  
We've got it!  
9am - 5pm Daily  
417-548-3023

**3 Pitiful to Posh**  
110 W. Broadway, Monett, MO  
Tues • Sat 10-5, Sun 1-5  
417-236-5664  
Boutique, Antiques, Collectibles,  
Repurposed Vintage Furniture

**4 THE FINICKY FOX**  
ANTIQUES AND UPSCALE FLEA  
Mon-Sat 10am-6pm, Sun. 12-5pm  
417-392-0482  
534 W Fir Rd, Carthage, MO 64836  
finickyfox.net • find us on f

**5 Saviors of Rust Flea Market**  
Spaces Starting at \$20 a month  
Open Tuesday-Saturday, 10am-6pm  
Hwy 59/421 Maple, Chetopa KS  
620-432-1770  
Like us on Facebook

**6 JODYJO'S FLEA MARKET**  
1708 S. MAIN  
Joplin, MO 64804  
Wed-Sun 10am-5:30pm  
417-438-4533

**8 Somewhere in Time ANTIQUE MALL**  
719 W. Walnut • Rogers, AR  
\* Located in the old Shelby Lane Mall \*  
479-636-0474  
Open: Wed-Fri 10-5 • Thurs-Sat 10-4 • Sun 12-5  
somewhereinlincoln.com@all.net

**9 Rusty Gate Flea Market**  
417-342-9315  
484 MO-76  
Cassville, MO

**LIMITED SPACE AVAILABLE!**

Hurry! Call today to get your spot and start reaching more customers in the 4-State Area!

**Your Ad Could be HERE!**  
**Call Billie @ 417-624-4100**





# SERVICE DIRECTORY

To Advertise your service or business in this special section

Call Grace: 417-624-4100

**\$40<sup>00</sup>**  
A Month

## ASPHALT SEAL COATING

**3S ASPHALT CONSTRUCTION**  
• Seal Chip • Asphalt Paving  
• Baserock-machine laid  
417-317-7448 or 417-297-8362

**ASPHALT PAVERS and Chip and Seal.**  
Free estimates on drive-ways,  
private roads and parking lots.  
1-800-614-6895.

## BATHTUB REFINISHING

**REPAIR OR REFINISH**  
Fiberglass or porcelain bathtubs. For a free  
estimate call Rick at 417-626-7882  
rwprotub@gmail.com

## CONCRETE

**4-STATES CONCRETE**  
Concrete flatwork includes shop floors,  
driveways, patios, decorative, infloor heat.  
**LEROY YODER**  
620-762-0132 or 620-238-7180.

## CONSTRUCTION & HOME IMP.

**GRUMPY GRANDPA  
HANDY MAN SERVICE**  
Insured and Bonded.  
417-793-4078

**PROFESSIONAL FLOOR LEVELING,  
AND JOIST REPLACEMENT.**  
Licensed, Bonded, Insured.  
417-439-5717 • 417-438-0864

**D&M CONSTRUCTION & REMODELING, LLC.**  
Specializing in doors, windows,  
install windows any size for \$150, & siding,  
all types of carpentry.  
Metal roofing. Senior Discounts.  
Licensed, Bonded & Insured.  
Dave McElhaney  
417-483-4113

**PROFESSIONAL REMODELING & BUILDING.**  
Garages, Shops, Room Additions,  
Bathroom Add-Ons.  
Prices to fit your pocketbook!  
Licensed, Bonded, Insured.  
417-439-5717 • 417-438-0864

**HANDYMAN IVAN JOSIP**  
Handyman Services Joplin And Surrounding  
Areas. From "To Do" list to "Job Done"  
with just one call! 417-396-4689.

## DRYWALL REPAIR

**CRAIG'S DRYWALL REPAIR**  
Do you have cracks in your ceilings or walls?  
• Can Repair • Popcorn removal • Retexturing  
• Loose tape joints • Ceiling stains • Mold removal.  
Same day, same service. Insured, Free Estimates.  
5 Star Rating. M-F 7am-5pm, Sat. 8am-Noon  
Serving the Joplin/Springfield area for over 40 years.  
417-430-9544

## ESTATE SALES

**JUST GET ORGANIZED!  
SERVICES WE OFFER!**

\*Organize, set-up, and hold sales. \*Downsizing  
\*Moving \*Estate (Residential & Commercial) homes  
and small and medium farms.  
\*Clean up property. \*Haul off unwanted items.  
\*Help prepare home/property for sale.  
\*Advise on staging home for sale. \*Pack for moves.  
\*Buying gold and silver (jewelry, flatware, coins)  
Serving the area for 15 years.  
Large following of buyers to our sales.  
**Just Get Organized! Free Estimates.**  
Suzanne 417-825-7003

## EXCAVATING

**DUMP TRUCK** Services, black dirt,  
creek rock, Skid steer work, Land clearing,  
Bush Hogging, Pads & Driveways.  
Donnie 417-291-8916.

## TICE EXCAVATION LLC

Prep for water/sewer lines,  
Land prep for buildings, roads,  
Land Clearing, Brush Removal, Ponds  
Seneca, MO  
417-592-4636 • Tim Tice- owner

## MARK LOTT'S EXCAVATING

All types of dirt work services. Land Clearing,  
Pond clean out, foundations, pads, driveways,  
roads, demolition, sit preparation. Dump Truck,  
Skidsteer, Excavator, tractor services available.  
703-625-4545 or 417-434-0585.

## HAULING

## HAUL AWAY SERVICES

Junk; Rubbish; Furniture; Appliances; Debris;  
Garage/Yard items.  
**JUST GET ORGANIZED!**  
417-825-7003  
Serving 4 State Area for 15 years.

## LAWN & GARDEN

**FIRE PITS, OUTDOOR KITCHENS & PATIOS,  
AERATION, HYDRO-SEEDING & SODDING.**  
Irrigation, installation, & repair.  
Retaining walls, sandstone patios & flowerbeds.  
Full service lawn, landscape and lawn care.  
Free Estimates. Licensed, Bonded & Insured.  
**R&D LAWN CARE & LANDSCAPING**  
417-438-6590

## MOVING SERVICES

**Expert Furniture Moving 3 Men & 26' Truck**  
Hourly or Flat Rate w/Quote.  
Professional, Licensed & Insured.  
**SCOUT PRODUCTS LLC**  
417-673-7777

## ORGANIZING

**TOO MUCH STUFF?**

We Buy Most Anything. Estates/full or partial.  
Appliances; furniture; patio; outdoor items;  
tools; jewelry, gold, silver items;  
(We also do Estate Sales).  
**JUST GET ORGANIZED**  
417-825-7003 Suzanne

## PLUMBING & SEPTIC

**ALL PURPOSE PLUMBING**  
Installing septic tanks and repairs.  
All of your plumbing needs.  
417-235-5511

## ROOFING

**RESIDENTIAL & COMMERCIAL METAL  
ROOFING & REROOFING.**  
Regular rib or standing seam. (Hidden fasteners).  
40 year warranty. (22) colors. Satisfaction  
guaranteed! Servicing the 4-State Area! Free  
Estimates!  
**YODER CUSTOM CONSTRUCTION, LLC.**  
417-388-0613

## MONTY'S ROOFING & CONSTRUCTION

Residential: •Roofing •Siding •Gutters  
•Storm Damage •Construction  
Commercial: •Roofing •Metal •Flat  
•Bituman Coatings. Over 30 years experience,  
Workers' Compensation  
30 Year Leak/Labor Warranty  
Free Estimates, Insurance Claims,  
Special Discounts  
Licensed, Bonded, Insured  
[www.montysroofing.com](http://www.montysroofing.com)  
417-438-0895

## STUMP REMOVAL

**TREE STUMP** removal, fast, efficient, affordable.  
Free estimate. 417-623-5510,  
**TERRY VREELAND**

## TREE SERVICE

## PACIFIC TREE SERVICE

Owner: David Bratt  
417-622-7963  
\*Licensed \*Bonded \* Insured  
All Bids are Completely Free  
Tree Trimming & Removal. Brush Cleanup.  
All jobs big and small. We can handle them all!

## QUILTING

## QUILTING!

Have your quilt tops ready for Christmas. .2¢ per  
sq. in. Includes backing, batting, and quilting.  
918-440-8686

**PLACE YOUR AD TODAY!**  
**SPACE IS LIMITED AND GOING FAST! DON'T MISS OUT!**  
**Call Grace: 417-624-4100**





# WANTED

## WHITE OAK STAVE LOGS

**TOP  
PRICES  
PAID!**

**ALL LOGS SCALED  
OUTSIDE OF BARK TO  
OUTSIDE OF BARK**

**12" - 15" Logs =  
\$2,000 Per Thousand -  
\$2.00 Per Foot**

**16" and Bigger =  
\$2,500 Per Thousand -  
\$2.50 Per Foot**

**ALL PRICES PAID ON LOGS!  
DELIVERED TO EITHER LOCATION**



**McGinnis Wood Products**  
8052 Old 66 • Cuba, MO 65453  
(573) 885-3524

**Ozark Stave LLC**  
30979 Hwy. 60 • Pierce City, MO 65723  
(417) 476-5054 • (573) 885-3524

**JOSH HARTNESS LOGGING**  
BUYING MOST SPECIES OF STANDING TIMBER



**620-212-0896**


MARKETS ARE GOOD ON BURR OAK, ASH & WALNUT  
FREE ESTIMATES • 25 YEARS EXPERIENCE



**PRATER**  
EST. 1903  
PRODUCTS

Sawmill/Logging 918-919-9764  
Buying Standing Timber

**Pets & Supplies**

  
FULL-BLOOD CHIHUAHUA PUPPIES, no papers, full shots, (2) longhair females, (1) shorthair male. Ready to go for Christmas! \$450. 417-434-5241.

GOLDEN DOODLE puppies, ready now; and AKC Standard Poodle puppies. Health guarantee. 417-592-4691.

GREAT PYRENEES PUPPIES, \$100 each; Nigerian Dwarf billie goat, \$150. 620-236-6003.

LABRADOR PUPPIES for sale, blacks, Amateur National Champions and Hunt Champions on both sides. Ready now, \$300. 620-515-4907 or 620-252-9507.


  
MALE MANX KITTENS; Beagleier, under 10lbs, male and females; pair of Red Tic Beagles, proven breeder; all vaccinations and wormed for age; Blue Heeler male puppy; Standard Aussie male; Jack Russell puppies, will be small. 417-880-0227. Call for pics.

  
MINIATURE SCHNAUZER puppies, several colors, ACA registered, \$200 and up. 918-868-4652.

**BE AN EARLY BIRD!** Place your ads before Monday and beat the rush!

**Pets & Supplies**

MINI AUSTRALIAN SHEPHERD Puppies, 8 weeks old; also Beagle puppies. Have had shots. 620-778-5330.

  
REGISTERED DECKER Rat Terrier puppies for sale, will have shots. 479-518-3759.

**WANNADOODLE?**  
Make Doodles with my AKC Stud Standard Poodle. Adorable and Intelligent. Plan ahead, payment plan available. fashionhound@myyahoo.com

  
YORKSHIRE TERRIER PUPPIES, will be 6 weeks by Christmas! Call for details at 918-961-2825.

**Wood & Accessories**

  
**CLINT RENNER LOGGING**  
Specializing in Walnut, oak and ash. Guaranteed bids, will pile brush, top prices paid. Don't sell too cheap! Honest, Reputable, 3rd generation logger. Call today for free estimate. 417-439-7954.

CALL ABOUT our classified ads specials. 417-624-4100.

**TOP PRICES PAID**  
*Veneer • Saw Logs • Table Top Logs*



**Maxwell Helm**  
Walnut Log & Standing Timber Buyer  
**417-439-3709**

**Miscellaneous**

**BUYING ALL**  
types of  
standing timber.

LARGE or  
SMALL Tracts

Nick Bradford  
417-451-0820  
417-825-4653

**SERVICES**

**Miscellaneous**

PAYING TOP Dollar for junk autos, small \$100/up, large up to \$300. No titles OK. 417-437-0605.

**Miscellaneous**

**BAR-M SKIDSTEER SERVICE**  
Pasture Clearing-Tree Cutting, Grapple work, Brush-hogging, Dirt Work, Demolition, Pond Cleaning, etc. 918-919-1384.

**ATTENTION!**

\$ \$ \$

Buying all  
**VEHICLES, TRACTORS,**  
Farm Equipment,  
Classic Cars and Trucks.  
Everything on property.  
"Call me  
before you sell!"  
417-830-4685.

HAVING A garage sale or rummage sale? Call us for special pricing. 417-624-4100.

**CHESHIRE LOGGING**

BUYING STANDING TIMBER

- Specializing in Walnut •
- Top Prices Paid •

References Available  
**BRENNON CHESHIRE**  
**417-540-0421**


~ The Fall ~

America has been blessed greatly by God. There's no other nation that can compare to that of Israel regarding how God has established this country. But America is not Israel. God has made a different covenant, even though there are some similarities between the two. Both have experienced God's great blessings and punishments.

No one likes to talk about punishment, disasters to come, the loss of position, or the fall from being great to losing everything. Some won't accept the facts. Others know what is true but choose to ignore what is coming, hoping it won't affect them. All of this happens because many of the gatekeepers- the people of God- haven't held the line of God's ways. They compromise, and over time, unrighteous living has gained more ground.

Today, the problems and growing issues America is caught up in will eventually cause the fall from God's blessings and removal of His protection and favor because many of God's people love the world more than they do God. And now today we all are experiencing the uneasiness and unrest of our country crumbling.

Our only hope is found in God and our position with His Son, Jesus. Look to Him; there's no other help that can save us from what is coming.



Mark Taylor is the President of Sky High Broadcasting, as well as an author, columnist and speaker. You can contact him at [mtaylor@kneo.org](mailto:mtaylor@kneo.org), or follow him on Twitter @kneo917



**KNEO**  
RADIO THAT IMPACTS YOUR FUTURE  
**91.7**

**Listen Live at**

**kneo.org**

417-451-KNEO (5636)  
10827 Hwy 86 East, Neosho, MO 64850



**WE WISH YOU A VERY MERRY  
CHRISTMAS & ALL THE BEST  
IN THE NEW YEAR!**



**Certified Express, Inc.**

**417-451-6162 | [teamcei.com](http://teamcei.com)**

**11817 Kentucky Rd. Neosho, MO**

**WE ARE PROUD TO  
BE TRUCKING!!!!**

673176jn



# Need Extra Cash?



**Have you cut back on all the**



**extras like going out to dinner or the movies?**

**Generate Some Extra Money For Your Pocket!**

*Now is the Time to Get Rid of Unused Items!*

*Clean Out The Garage!*

Place Your Classified Ad in a 2nd, 3rd or 4th Additional Category for

# 1/2 Price!

*HURRY- Special pricing is for a limited time only!*



**BIG NICKEL CLASSIFIED ORDER CALL 417-624-4100 OR FAX 417-621-0287**

Name \_\_\_\_\_  
 Address\* \_\_\_\_\_ Phone \_\_\_\_\_  
 City \_\_\_\_\_ State \_\_\_\_\_ Zip \_\_\_\_\_

Clip your ad and send it with payment to:

**Big Nickel**  
**PO Box 1567**  
**Joplin, MO 64802**  
 Or e-mail us at:  
**classified@bignickel.com**  
 Place your ad online at  
**www.bignickel.com**

\*Required information when paying with credit card

Classification \_\_\_\_\_  
 Amount From Form Below \$ \_\_\_\_\_  
 Boxed (Add \$2.00) \$ \_\_\_\_\_  
 Bold & Capitalize First 5 Words (Add \$2.00) \$ \_\_\_\_\_  
 Graphic Options (circle choice) Add \$5 ea. Option \$ \_\_\_\_\_  
 Super Graphic (Add \$5.00) \$ \_\_\_\_\_  
 Include Email address (Add \$2) \$ \_\_\_\_\_  
 Add a Picture (Add \$5) \$ \_\_\_\_\_  
 Include URL (Add \$2) \$ \_\_\_\_\_



**SEE MORE GRAPHIC OPTIONS ON INDEX**

\* Required on Help Wanted and OTR & Driver Opport. Classifications

**100% Reverse [Boxed/Boldcaps] (Add \$5)**  
 Subtotal \$ \_\_\_\_\_  
 # of Weeks Ad is to Run \_\_\_\_\_ x Subtotal= \$ \_\_\_\_\_

CLASSIFIED DEADLINES	
<b>AUCTIONS</b> 10am • Mon.	<b>A SECTION</b> 3pm • Mon.
<b>B SECTION</b> 10am • Mon.	<b>VEH SECTION</b> 3pm • Mon.

BOLD NAME, ADDRESS & PHONE ON COMMERCIAL ADS PRIVATE PARTY

				UP TO 15 WORDS	
				\$13.75	\$11.75
				\$14.75	\$12.75
				\$15.75	\$13.75

Credit Card No.\* \_\_\_\_\_ CC Exp. Date\* \_\_\_\_\_ 3 Digit Verification No.\* \_\_\_\_\_

Payment by check authorizes the Big Nickel to electronically collect returned checks, plus \$25.00 Service Charge.

**For other specials or to place your classified**

**Put the 4-state area distribution of the Big Nickel to Work for YOU!**

**Call 417-624-4100**  
**Fax: 417-621-0287**

**www.bignickel.com**  
**Email: classified@bignickel.com**



**FREE LIFELINE SERVICE  
TALK + TEXT + DATA**

ENROLL IN LIFELINE ONLINE - FAST AND EASY!

[www.assistwireless.com](http://www.assistwireless.com)

THIS OFFERING IS A FEDERAL LIFELINE SUPPORTED SERVICE provided by Assist Wireless, LLC. Lifeline is a government assistance program that provides discounts on your monthly phone and/or broadband/Internet service. Only eligible consumers may enroll. Eligibility is based on income or participation in certain government benefit programs and is determined by the National Verifier (documentation may be required). The Lifeline benefit is non-transferable and is limited to one monthly discount per household for either wireless or wireline service. For Lifeline eligibility criteria and applicable terms and conditions, visit <https://www.assistwireless.com/terms-and-conditions/>. \$0 Plan offerings: 1000 Talk, 500 Text, & 100MB Data; Unlimited Talk & Text + 4.5GB Data (Tribal only). Call 855-392-7747 for full plan details.



**WANT TO BUY  
MILITARY ITEMS**

USA or FOREIGN \* SINGLE PIECES OR COLLECTIONS  
Medals - Helmets - Patches  
Uniforms - Knives - Bayonets  
Buying from WW I - Iraq/Afghanistan



**Military Collectors  
Services**

126 N. Webb • Webb City, MO • 417-850-0011  
[marionfiles@yahoo.com](mailto:marionfiles@yahoo.com)

Miscellaneous

**CASH BUYING**  
COINS, GOLD, SILVER,  
JEWELRY, DIAMONDS,  
SAFES, OAK ANTIQUES,  
BRASS MICROSCOPES,  
MOBILITY SCOOTERS,  
ELECTRIC WHEELCHAIRS,  
ARROWHEADS, ANVILS,  
GUN COLLECTION, AMMO  
417-437-5317 DR. HAMLIN

**D&D LOGGING**

**BUYING ALL  
TYPES OF  
STANDING TIMBER**  
Walnut • Oak  
Ash • Etc.  
Anthony Gruver  
417-437-9633

Miscellaneous

**ROLL-OFF CONTAINERS  
FOR REMODELING,  
ROOFING, CLEAN UP.**  
Pittsburg, Joplin and  
surrounding areas.  
**Freddy Van's, Inc.**  
620-231-1127.

**STORAGE UNITS, TWO  
SIZES OPEN, RV/BOAT  
PARKING ALSO AVAILA-  
BLE, IN NEOSHO, MO.  
(NEAR LOVE'S TRUCK  
STOP.) FOR PRICES AND  
SIZES, VISIT**  
[86ministorage.com](http://86ministorage.com) or  
call 417-621-1601.

Construction-Services

**RUSTIC CIRCLE CUT  
wood flooring, tongue &  
groove, 3"-6" wide,  
mixed oak.**  
Chapman Sawmill  
417-438-5507.

[WWW.BIGNICKEL.COM](http://WWW.BIGNICKEL.COM)



**POULTRY HOUSE REMOVAL**  
We buy good quality chicken and turkey houses. Remove the houses and all deconstruction debris. Local professional crews. Serving since 1992.  
**Cedar Creek Contractors, LLC 785-217-3379.**

HAVING A garage sale or rummage sale? Call us for special pricing. 417-624-4100.

**HomeTown  
LENDERS**

WHAT HAS YOUR HOME EQUITY DONE FOR YOU LATELY?  
Seniors, are you 62 or older and have thought about using your home equity to: Get rid of the mortgage payment.... Payoff debt.... Take a trip.... Remodel.... Invest

To discuss a **REVERSE MORTGAGE**, call today.

**CARY WHITE** NMLS # 282892 **417-825-7398**  
cary.white@htlenders.com  
407 Pennsylvania Ste 206, Joplin, Mo 64801

**DENTAL CENTERS**  
Located at:  
**MID-AMERICA DENTAL  
& HEARING CENTER**  
[www.MidAmericaDental.com](http://www.MidAmericaDental.com)

**\$195 PER ARCH**

**THE BEST INVESTMENT IS YOU!**

Dr. Collins & Associates are Missouri licensed General Dentists. They are not licensed in Missouri as specialists in the advertised dental specialty of Prosthetics. Implants are a specialty area not recognized by the ADA that require no specific educational training to advertise this service.

31+ years experience Free Estimates

**The - Shetler's  
JJ BUILDERS  
&  
EXCAVATING**

Family owned and operated.

Also Buyer of Standing Timber  
Specializing In  
Pole Barns, Houses, Horse Barns, Garages,  
New Roofs: Metal or Shingle. All kinds of Concrete Work  
Water Drainage, Landscaping, Building Sites,  
Driveways & Much More!  
Quality work at a lower price

John and Caroline Shetler  
1185 Rt. E, Lockwood, MO  
Call or text 417-205-8780

**H&M  
CONSTRUCTION**

Cell: 417-262-2340 • Home: 417-682-4060

**ALL TYPES RESIDENTIAL  
& COMMERCIAL BUILDINGS**

Pole Barns • Shop Buildings • Horse Barns  
Cattle Facilities • Shouse Buildings • Garages  
Also Available in Red Iron Structures

**YOU DREAM IT, WE BUILD IT!**

**CEI  
CERTIFIED EXPRESS, INC.**  
NEOSHO, MO

**NOW HIRING  
SAFE, PROFESSIONAL DRIVERS**

11817 Kentucky Rd.,  
Neosho, MO

**866-451-6162  
EXT. 18**  
CEI-HVLL.COM

Construction-Services

**SOUTHWEST  
CONTRACTORS**  
YOUR LOCAL metal roofing contractor. Various colors available. Free estimates. General construction.  
417-434-3266.

Electrical/Plumbing

**SPRINGFIELD LICENSED  
MASTER ELECTRICIAN  
32 years experience.**  
I will Install, Repair and Maintain all of your electrical needs with strict compliance of the NEC. Professional and reliable services. New circuits; security cameras; out-building circuits; wired smoke detectors; service repairs; ceiling fans; etc. Service area within 30 miles of Republic, MO. Phillip 417-413-6963.

Tree Service

**BUYING STANDING Timber.**  
Top prices paid. Full residential service available.  
Call Josh St. Clair.  
417-626-2120.

NEED SOMETHING? Let us help you. You can advertise that you are looking for a special item.  
Call 417-624-4100 for more information.

Mechanic

**COME JOIN our work family! Trailer Connection is hiring mechanics! Get paid for your experience starting at \$15-\$20 per hour.**  
417-659-9999.

**BIG NICKEL ads sell!** Call for more information and specials.  
417-624-4100

Miscellaneous

Transportation/Drivers

**AMISH CREW** looking for a driver with crew cab truck to haul work crew. In Lamar or Jasper area.  
417-682-4060.

**Local & OTR Drivers  
Days & Nights Available  
OTR Routes too!  
CDL-Class A,  
2 years experience.  
CERTIFIED EXPRESS, INC.  
866-451-6162, ext. 3**

REAL ESTATE SALES

Homes For Sale

3 BEDROOM, 1 bath frame house in Seneca; 1232 sq.ft. with new metal roof, new storm windows, chain-link fence on corner lot! \$3900 down, \$711 per month. Owner finance 800-720-8503.

**BILL BUYS Joplin Houses**  
(64801-64804)  
For FULL Price.  
417-580-0007.

**CHECK OUT this Modular home in Goodman with acreage!** 3 bedroom, 2 bath modular home on 1-1/3 acre; has central heat/air, enclosed front and back porches, 2-car garage and carport/ storage. AS IS, \$4900 down, \$790 per month. Owner finance 800-720-8503.

Homes For Sale

**CUTE COTTAGE** in Joplin. 2 bedroom, 1 bath, frame house with central heat/air, small storage building, \$3900 down, \$667 per month. Owner finance 800-720-8503.

**FAIRVIEW-** 3 bedroom, 2 bath mobile home with new metal roof, central heat/air, small outbuilding, \$2900 down, \$451 per month. "AS IS". Owner finance. 800-720-8503.

**GOODMAN-** (4) acres with 1 bedroom, 1 bath frame house, 1-car carport, barn and small storage building. AS IS, \$2900 down, \$474 per month. Owner finance 800-720-8503.

**GRANBY-** 3 bedroom, 2 bath frame home with new metal roof and siding installed in 2002! \$4900 down, \$834 per month. Owner finance 800-720-8503.

**JOPLIN-** 2 bedroom, 1 bath frame house with central heat/air; 1048 sq.ft. \$3900 down, \$667 per month. Owner finance 800-720-8503.

**JOPLIN-** 3 bedroom, 1 bath frame house, 932 sq. ft. with central gas heat/air, \$3900 down, \$667 per month. Owner finance 800-720-8503.

**LAMAR-(5-3/4) ACRES** with all utilities, all metal garage/ workshop approx. 24'x34' with concrete floors, small shed, \$3400 down, \$583 per month. Owner finance 800-720-8503.



**LIST PRICE: \$168,500**  
17435 Danville Dr.  
Neosho, MO  
2 bedroom, 2 bath,  
1300 sq.ft., (1.55) acres.  
Look up on Zillow for more info.  
Jim and Bonnie Boyer,  
417-389-0632.

HAVING A garage sale or rummage sale? Call us for special pricing. 417-624-4100.

**WE ARE  
HIRING!**

**FREEMAN HEALTH SYSTEM**

[JOINTEAMFREEMAN.COM](http://JOINTEAMFREEMAN.COM)

**BENEFITS START DAY 1!**

- » General Maintenance Specialist – Full time – 40 hours/week
- » Groundskeeper – Full time – 40 hours/week – Evening and night shift  
Evening and night shifts include a shift differential
- » Security Guards – PRN
- » Warehouse Technician – Full time and part time

**APPLY NOW** **FREEMAN Health System**



**100% FINANCING**  
(AVAILABLE WITH APPROVED CREDIT)  
**BRAND NEW HOMES**  
3-4 Bedroom  
Goodman, MO  
Neosho Schools

Realtor  
Kathie Daley  
479-531-7278

**CRYE-LEIKE**  
REAL ESTATE SERVICES

217 S. Gentry Blvd.  
Gentry, AR  
479-736-1353

**Homes For Sale**

NECK CITY- 4 bedroom, 1-1/2 frame house with 1-car attached garage; on corner lot! AS IS, \$3900 down, \$842 per month. Owner finance 800-720-8503.

**NEED SPACE w/2 mobile homes??** Nine acres with a 3 bedroom, 2 bath mobile and 4 bedroom, 2 bath mobile, **Anderson area.** \$7900 down, \$1334 per month. Can be purchased separately. Owner finance 800-720-8503. Call for more details.

NICE WARM 3 bedroom house in Arcadia. Carport and a barn. 620-232-4718 or 620-638-4703.

**PIERCE CITY-** 1276 SF, 3 bedroom, 2 bath repaired frame house; \$4900 down, \$834 per month. Owner finance 800-720-8503.

PINEVILLE- (3/4) acre, 3 bedroom, 2 bath, mobile with central heat/air. "AS IS". \$3900 down, \$667 per month. Owner finance. 800-720-8503.

SARCOXIE- 2 bedroom, 1 bath frame house, 1294 sq.ft., metal roof, basement, 2-car attached carport and outbuilding, \$3900 down, \$755 per month. Owner finance 800-720-8503.

SENECA- 4 bedroom, 1-1/2 bath frame house with upgraded electrical wiring, \$5900 down, \$913 per month. Owner finance 800-720-8503.

WEBB CITY- 3 bedroom, 2 bath repaired frame house; \$4900 down, \$834 per month. Owner finance 800-720-8503.

**Mobile Homes For Sale**

2006 SUNSHINE mobile home 16'x80', 3 bedroom, 2 bath, 2x6 construction. Excellent condition. HVAC, hot water tank, roofing, flooring only 2 yrs old, newly painted. Includes front deck, skirting, back stairs. Must be moved \$59,900 or best offer. Call or text 918-533-6321.

[WWW.BIGNICKEL.COM](http://WWW.BIGNICKEL.COM)

**Mobile Homes For Sale**

4 BEDROOM, 2 BATH, home has a new roof, new A/C, water heater and kitchen appliances. The carpet has been replaced. Financing options available for most all credit scores. Give us a call today! #50. [www.hwy59discounthomes.com](http://www.hwy59discounthomes.com) 417-451-2609.

4 BEDROOM, 2 BATH 16x84, 4 bedroom, 2 bath single-wide. Yes, four bedrooms! Home has been renovated. Will come with new A/C and kitchen appliances. Financing options available. First 50 miles of delivery free along with standard set-up: block, level and tie down. Call us or stop by! #3 417-451-2609. 18101 Linden Dr., Neosho, MO, 64850. (Hwy 59 Discount Homes)

FINANCING AVAILABLE. 3 bedroom, 2 bath Southern home. Partial tape and texture, new carpeting and paint. Nice master bathroom, big tub, porcelain sinks. Home comes with kitchen appliances. This one will go fast! #42. 417-451-2609.

[WWW.BIGNICKEL.COM](http://WWW.BIGNICKEL.COM)

**Town & Country**

Real Estate & Auction Service  
1700 W. Austin, Nevada • 417-667-2966

- 3 bed 2 bath home on 49 acres Vernon County, .....  
.....SOLD.....\$266,000
- 1480 Acres, Vernon County Mo....SOLD.....\$7,000,000
- 120 Acres, Row Crop, Vernon County Mo.....  
.....SOLD.....\$660,000
- 75 acres M/L, great hunting property east of Nevada Mo.....  
.....UNDER CONTRACT ..... \$215,000
- 391 acres M/L pasture ground, 6 nice ponds some are big and full of fish, Good fences .....\$1,955,000
- House & 80 Acres ..... SOLD AT AUCTION

WE ARE "SOLD OUT" & NEED LISTINGS! PLEASE CALL, IF YOU ARE THINKING OF SELLING! 417-488-9540



**Mobile Homes For Sale**

WE need MOBILE HOMES!  
PAYING CASH TODAY!  
ALL YEARS, ALL SIZES.  
CALL 417-455-0200.

**Acres & Lots-Sales**

2-3.5 ACRE LOTS, 6 miles from Baxter Springs. Zero down. Monthly payment \$350-\$415. All utilities included. 620-304-1119 ask for John.

**There's a better way to get noticed.**  
Keep life simple. Take out an ad.

**Homes For Sale By Owner**

THINKING ABOUT SELLING YOUR LAND? I CAN HELP.

**TONY CHRISCO**  
Southwest Missouri Land Specialist  
**417.860.0259**  
[tony.chrisco@whitetailproperties.com](mailto:tony.chrisco@whitetailproperties.com)

WHITETAIL PROPERTIES REAL ESTATE  
HUNTING | RANCH | FARM | TIMBER  
[WHITETAILPROPERTIES.COM](http://WHITETAILPROPERTIES.COM)

**Other-RE Sales**

Clayton Joplin homes Joplin Super Center

"Largest Selection of Energy Smart Homes in the 4-State Area!"

Energy Smart Homes Will Save You \$\$\$

**BEST HOMES • BEST PRICES**  
Customer Experience is our #1 Goal  
Buy from the Proven Best!

5609 East 7th St. • Joplin, MO  
**417-553-9780**  
[www.ClaytonHomesJoplin.com](http://www.ClaytonHomesJoplin.com)

**Acres & Lots-Sales**

**SUPER Value**  
BY OWNER

\*28 acres + canoe resort on Elk River, with RVs and cabins, Noel, MO.

\*Only (3) LOTS left, Mountain Ridge, in Pineville, MO. Acre + lots with panoramic views, with utilities and paved roads. Your choice.

\*4000+ sq.ft. warehouse, brick with new roof, Noel, MO. On railroad spur and loading dock, high ceiling.

\*25 acres + gravel stock pile, Pineville, MO. Limestone rock, all sizes of rock, over million tons.

\*21 acres + great for RV, boat storage, BBQ restaurant, Dollar General, ETC. Great income potential. Located on the MO/AR line.

\*16+ approximately 6 acres commercial property on new 49/71 Freeway. Lower half could be small farm, has large warehouse, workshop, and doublewide on the creek. Anderson, MO.

\*13.3 acre+ with (4) 40x400 buildings in good shape, good well and electric, great views for homesite, great for growing vegetables, raising birds, small herd of cattle, etc. Exeter, MO.

\*60 acres, plus great for housing development or farming, Shawnee, OK. Electric, water and paved road to property. Right in the path of growth! May split!

Owner may carry with reasonable down payment!!  
602-999-3899 or 800-333-9110.



FOR SALE: Cattle Ranch with (170) acres with (2) homes, plus outbuildings, live spring waters, very private and quiet. Anderson, MO. 417-461-4355.

BE AN EARLY BIRD! Place your ads before Monday and beat the rush!

**RECREATION**

**Campers & Trailers**

**GRAND COUNTRY** Lake-side RV Park. Daily, weekly, monthly, annual. Adult park. On Grand Lake. Space available. 918-314-9508.

**Motorcycles**

**NIGHTWIND CYCLES**  
1004 Walnut, Lamar, MO.  
Reasonable rates.  
Motorcycle inspection station.  
**BIG SALE ON ROADKILL T-SHIRTS-\$5 EACH!**  
Now have full line of biker apparel and gear!  
Also Billiard supplies!  
Year round gift certificates.  
Now accepting credit cards.  
Call for appointment 417-682-3733.

**TRANSPORTATION**

**Antiques & Classics**

**GOOD PROJECT CARS and Trucks**, some run and drive, all have good titles. 1937 Chevy Truck; 1949 Chevy Truck; 1965 Chevy C-10 shortwide; 1968 Chevy C-10 shortwide 383 with M21 4 speed, all QAI suspension; 1929 Ford Model A Roadster land speed racer, very cool; 1956 Chevy 2 seater street legal stock car; 1967 Camaro Sport Coupe ready to paint, wrapped in plastic; 1967 Camaro RS SS 350 4 speed project car, good title; 1970 Camaro Z28 with RS option, very rare; 1971 Camaro 350 auto with new paint; 1979 Camaro Z28, no engine or trans, good car with good interior; 1955 Chevy street legal gasser, small block Chevy, 4 speed, tunnel ram, 2-4's, Vertex Magneto, fenderwell headers, Lakewood bellhousing, California frame, body-off all new, sweet and fast! Call Rocky for details. Daytime: 620-421-8200 or 620-421-1908.

**Heavy Equipment**

**EQUIPMENT UNLIMITED, INC**  
TRUCKS & SALES

WE BUY AND SELL:  
Dozers; backhoes; skidsteers; dump trucks; bucket trucks; semis; trailers of all sizes; forklifts; various quick attachments.  
Call Robert 918-801-3269.

ADVERTISE YOUR Flea Market or Antique Store in the Antique & Flea Market Directory. Call Billie for more information and special pricing. 417-624-4100.

**A NEW HOME FOR THE HOLIDAYS!**

NEW 16' WIDE 2 BEDROOM, 2 BATH  
\*CHOICE OF CABINETS AVAILABLE\*

**ONLY \$59,900**

(Includes Delivery, Set-up, & Skirting)

BE THE FIRST TO OWN THIS BRAND NEW MODEL!

At I-49, Exit 27 (Loves), 1 Mile East on Hwy. 86, Neosho, MO  
**877-582-6767 • 417-451-6767**  
[www.claytonhomesofneosho.com](http://www.claytonhomesofneosho.com)  
M-F • 9am-6pm | Sat • 9am-5pm



## 2007 JEEP PATRIOT SPORT 4X4

2.4L I4, 4WD, 4 DR, 2ND ROW FOLDING SEAT, ONLY 161K MILES, LOTS OF EXTRAS & READY FOR SNOW! SEE OUR WEBSITE FOR MORE PICTS!



Only **\$5,995**

**Burr Motor Co.**  
639 W. Coler, Neosho, MO  
417-451-1029  
www.burrmotorcompany.com

### Automobiles

2020 IMPALA LT, V6, 90,000 hwy miles, one owner, loaded with options, ruby red, \$19,900. 417-389-1697.



BUICK, 2001, Century, really good condition, runs good, asking \$2000. 417-508-9194.

### Trucks, 4x4's, SUV's

2002 DODGE 1/2 ton, 4 door, 4x4, 4.7 V-8, 141,000 miles, \$6950. 620-856-5638. CALL ABOUT our classified ad specials. 417-624-4100.

### Trucks, 4x4's, SUV's



2008 FORD Lariat Super Duty F-250, 4x4, 5.4, 147,690 miles, 10 ply tires (like new), loaded with extras, \$23,000 or best offer. 918-783-5236 or 918-244-5236.

**15 WORDS \$11.75**  
**- CALL THE BIG NICKEL TODAY AT 417-624-4100!!**

# DO YOU LIKE YOUR PICKUP, SUV, OR CAR?

Winter weather will be here soon! Get your vehicle travel ready!



## Let's Get Er Done!



**DON'T TRADE IT IN ON A USED CAR YOU KNOW NOTHING ABOUT, Give Your vehicle new life with a DYNATECH Remanufactured Engine!**

COMPLETE MACHINE SHOP SERVICES

**WE ARE YOUR PICKUP & SUV HEADQUARTERS!**

1 YR. UNLIMITED MILES PARTS & LABOR WARRANTY

**WE DO BETTER THAN OUR COMPETITOR FOR LESS \$\$\$**

**DYNATECH** IN THE SAME LOCATION FOR 30 YEARS  
ENGINE REBUILDERS **620-783-5041** (6 Miles West of Joplin on 7th St.)  
724 W. 7th • Galena, KS

# ASK THE MOTOR MEDICS®

Automotive Advice from the Under The Hood® Show



Dear Motor Medics,

There are so many new things on cars today. How do you keep up with them all? I just bought a new car to me; a 2011 Ford Focus and it has a ton of new stuff on it that I have never heard of, being that I just got out of a much older vehicle. This car has no gas cap on it. I mean it's not supposed to, but I have a message on the dash that says "Check gas cap" so now what?

Thank you,  
Seth in Vandalia Missouri

Dear Seth,

Ok Seth, now were on question overload, but we can handle it. 1st, we don't know how we keep up with it all, we just do. That's our number one asked question on our radio show Under The Hood. We have great memories and see a lot of vehicles in our shop which helps. As for the new features, they are coming out of the woodwork for sure. Your car is one of those with the new no fuel cap feature. At least you can't lose the fuel cap. The filler tube now just has a valve and spring to seal the filler neck and if it gets dirty and damaged it can trip the light you have on now. It is very important to keep the area clean, we use a damp cloth, not soaking wet, to clean the area on a regular basis. Good luck with the new car.

Take care,  
the Motor Medics

Dear Motor Medics,

I have a question about your radio show. You have helped me with car repairs on four different occasions and I was able to fix it myself 3 times and saved money and the 4th time you were talking about a recall I didn't even know existed and I was able to have my problem at no charge at my local dealership. I want to know how you know so much about cars and how you guys started doing the show and this column.

Thank you,  
Mark in Inwood Iowa

Dear Mark,

We're happy to help and it gives us great pleasure to know we are helping others save money and keep their automotive stress levels down. Mark, we work on cars every day in our own repair shop doing everything you hear on the show and that is a great learning center for us. Russ also has a crazy memory that never lets anything go so he keeps all that knowledge and passes it on to our listeners. Neither Russ nor Shannon uses a computer to answer the questions on the air. We started the show back in 1990 as a half-hour show, never dreaming, we would have a worldwide audience 33 years later. At one point we were answering over 300 emails a day with many being similar, so we started this column to help multiple folks at once with one answer. We are blessed to have such great folks listening.

Take care,  
the Motor Medics

FOR ENTERTAINMENT ONLY • Always consult your local shop and follow all safety procedures before repairs.

Come visit the Motor Medics® online @ [underthehoodshow.com](http://underthehoodshow.com)

# SPACE AVAILABLE

Out-of-this-world  
print advertising rates  
that fit any budget!







# JIMMY MICHEL MOTORS AURORA, MO

## Great Selection of Pre-owned Vehicles!

**2013 Chrysler  
Town & Country**



#720543 **\$14,500**

**2015 Chevrolet  
Suburban**



#246209 **\$26,750**

**2016 Dodge  
Ram 1500 Bighorn SLT**



#103769 **\$25,500**

**2016 Lincoln  
MKS**



#601246 **\$17,500**

**2021 Ford Bronco  
Sport Big Bend 4x4**



#A24156 **\$34,500**

**2018 Jeep  
Renegade**



#H87220 **\$20,000**

**2018 Chrysler  
Pacifica**



#211657 **\$23,000**

**2018 Chevrolet  
Silverado**



#373735 **\$28,500**

**2019 Jeep  
Wrangler**



#568784 **\$43,000**

**2019 Jeep  
Cherokee**



#205839 **\$18,750**

**2020 Nissan  
Sentra**



#263066 **\$22,250**

**2020 Jeep  
Compass**



#158409 **\$22,500**

**2021 Jeep  
Wrangler**



#502465 **\$36,000**

**2021 Hyundai  
Elantra**



#250479 **\$22,500**

**2021 Chevy  
Malibu LT**



#026092 **\$22,500**

**Pre-Owned Car Deal of the Week**



**2017 Ford Fiesta SE**  
49,000 miles **\$17,500**

# JIMMY MICHEL MOTORS

TOLL FREE 417-815-3320

WWW.JIMMYMICHEL.COM



**Branson**  
TRACTORS

**Heaviest Tractors in their Class,  
with the Most Loader Lift Capacity!  
All Branson Tractors include  
FREE LOADER!**

**6 Year Limited  
Warranty**

**Financing  
Available**



**BRANSON 2515R**  
25HP, 4WD, W/LOADER, 12X12  
Shuttle Shift Trans, 2200 lbs loader lift  
capacity, 3022 lbs tractor weight only.

**\$288<sup>65</sup>/MO.**

0 DOWN, 84 MO FINANCING WAC



**BRANSON 2515H**  
25HP, 4WD, W/LOADER, HST Trans,  
2200 lbs loader lift capacity,  
3022 lbs tractor weight only.

**\$288<sup>65</sup>/MO.**

0 DOWN, 84 MO FINANCING WAC



**BRANSON 3515H**  
35HP, 4WD, W/LOADER, Hydrostat  
Trans, 2200 lbs loader lift capacity, 3022  
lbs tractor weight only.

**\$365<sup>34</sup>/MO.**

0 DOWN, 84 MO FINANCING WAC



**BRANSON 4815R**  
48HP, 4 WD, w/Loader, 12X12 Shuttle Shift  
Trans, 2 sets Remotes, 2200 lb Loader Lift  
Capacity, 3100 lb Tractor weight.

**\$365<sup>34</sup>/MO.**

0 DOWN, 84 MO FINANCING WAC



**BRANSON 2515R  
& BACKHOE**

25HP, 4WD, W/LOADER, & Backhoe to header, 12X12 Shuttle  
Trans, 2200 lb loader lift capacity, 3022 lbs tractor weight only.

**\$401<sup>56</sup>/MO.**

0 DOWN, 84 MO FINANCING WAC



**BRANSON 2515H  
& BACKHOE**

25HP, 4WD, W/LOADER, Hydrostat Trans,  
2250 lbs loader lift capacity,  
3022 lbs tractor weight only

**\$401<sup>56</sup>/MO.**

0 DOWN, 84 MO FINANCING WAC



**TYM 474 HYDROSTAT CAB**

47 HP, 4WD, W/Loader, Cab w/H&A,  
Hydrostat Trans, 1 set Remotes,  
2200 lb, Loader Lift Capacity

**\$466<sup>76</sup>/MO.**

0 DOWN, 84 MO FINANCING WAC



**BRANSON 5520 CAB**

55 HP, 4WD, W/Loader, Cab w/H&A,  
16x16 Shuttle Shift Trans, 2 sets Remotes,  
2700 lb. Loader Lift Capacity,  
4200 lbs. Tractor Weight

**\$539<sup>21</sup>/MO.**

0 DOWN, 84 MO FINANCING WAC

**MIDWEST LARGEST BRANSON DEALER & TOP "10" NATIONWIDE!**

**Tatum Motor**  
FARM TOOLS SINCE 1889

931 N. BUS. HWY. 71  
ANDERSON, MO  
417-845-3563  
HOURS M-F 8-5 • SAT 8-NOON

1033 W. HENRI DE TONTI BLVD  
(412 WEST), TONTITOWN, ARK  
479-361-9488  
HOURS M-F 8-5 • SAT 8-NOON

670874jn

S A L E S • S E R V I C E • P A R T S



# CAS STEEL

## METAL BUILDING SUPPLIES



### METAL CULVERTS

- 23 STEEL ROOFING COLORS plus 18 Textured Colors
- VINYL SIDING
- GARAGE DOORS
- TRIM
- BUILDING KITS Steel Or Wood

**LIFETIME WARRANTY**

**FOR SALE:**

(1) 12x15 insulated Commercial Ribbed Door **\$1,331**

(2) 8x8 insulated Commercial Ribbed Door **SOLD** each

**www.cassteelneosho.com**  
**18027 E. Hwy. 86 - Neosho, MO**  
 (5 Miles East of Walmart on 59 Hwy. - Old 60 & 71 Alt.)  
**Toll Free 855-455-2526 or 417-455-2525**  
 Mon-Fri • 7:30-5:00



## American Made Metal Roofing

### 40 Year Warranty Metal...\$3.09

29 Gauge 10 Year.....	\$2.89
29 Gauge #1 Galvalume.....	\$2.55
26 Gauge 40 Year.....	\$3.85

**417-553-8697**

**PORTABLE BUILDINGS**

**REDUCED METAL PRICING**



**OVERMAN BUILDINGS SUPPLY**

202 S. Prigmor Joplin, MO. 417-553-8697

\*29 Gauge 10 Yr. possibly not American made

## BRB BUILT RITE BUILDINGS

1110 W. Harmony Neosho, MO  
**417-632-4675**  
 www.builtritebuilding.com

- 2x6 Nailers
- Trusses 4' On Center
- Patented Concrete Pier Options Available
- Free Estimates
- McElroy Metal (40 Year Warranty)

### BUILT-RITE POST FRAME BUILDINGS

- Shops • Garages • Machine Sheds
- Cattle Facilities • Homes
- Horse Barns • Riding Arenas




Serving The Area For Over 35 Years. Locally Owned & Operated.

### METAL BUILDINGS

FIND THE PERFECT PET FOR THE PERFECT PRICE IN THE PERFECT PLACE FOR DEALS

Find the stuff you want and sell the stuff you don't in the newspaper classifieds.




## SUPERIOR METALS SALES INC.

### Metal Building Supplies & Components

Commercial • Agriculture • Shop Buildings

Custom I-Beam Buildings w/26 ga. 40 Year Warranty on all Prime Steel Panels

**HAY BARN 40x75x16**  
 Roof Only • Materials CALL FOR PRICING DUE TO RISING COST OF STEEL. All American Steel. Install Available.




- 29 Gauge 40 Year, Painted, Warranty.
- 19 Colors Available.

Steel Pricing Fluctuation. Please Call for Quotes

**Call For Mini-Storage Quotes**

Toll Free 1-888-364-9527  
 Office 1-417-671-8015  
 Fax 417-671-8018  
 Hours: Mon-Fri 8am-5pm  
**12760 St. Hwy. 76 • Cassville, MO 65625**  
 sales@superiormetalsalesinc.com



**15 WORDS \$11.75 - CALL THE BIG NICKEL TODAY AT 417-624-4100!!**

## VANOVER METAL BUILDING SALES

(918) 253-6030  
 LOCATED 11 MILES WEST OF JAY, OK. ON HWY. 20  
 MON-Fri 8:00 - 4:30

**29ga NW Roofing Panel - \$2.40/ln ft**  
 NOT SECONDS or SCRATCH/DENT  
 Custom Lengths from 3' to 40' - 9 Colors Available

**END OF YEAR SALE!!**

**\$500 Off Bolt Up Red Iron Kits**

30 x 40 x 12 Centra Series Red Iron Kits Start at **\$13,050**. Comes complete and includes (1) 3070 Commercial Walk Door. Purchase in Dec or Jan and take an additional **\$500 off**. More sizes and options available.




**24 x 30 x 8 GaragePort Kits on sale.**  
 Kit includes (2) 9x7 OHDs and (1) 3068 Walk Door.  
**NOW ONLY \$6650 - A Savings of \$500.**

All prices subject to change. taxes extra

## Best Buy Builders & More

Call or Text **417-508-9351**  
 We Build All Sizes!



**Barn Dominium 40'x60'**

 <b>40'X40'X12'</b> <b>\$39,900</b>	 <b>27'x30'</b> <b>\$17,272</b>	 <b>28'X36'X8'</b> <b>\$23,500</b>
 <b>24'X40'X8'</b> <b>\$19,900</b>	 <b>40'X50'X12'</b> <b>\$43,995</b>	 <b>30'X60'X12'</b> <b>\$42,995</b>



## JOPLIN TRUSS

**ENGINEERED QUALITY CONSTRUCTION**  
**2 LOCATIONS TO SERVE YOU:**  
**Stark City, MO**  
**417-472-6800**  
**Hwy. 96 - Avilla, MO**  
**417-246-5215**

## QUALITY POST FRAME CONSTRUCTION LLC



POLE BUILDINGS • GARAGES • GENERAL CONSTRUCTION  
 QUALITY WORKMANSHIP • METAL ROOFING  
 FREE ESTIMATES!  
**WILLARD KNEPP 918-533-2637**  
 FAIRLAND, OK • NO SUNDAY CALLS, PLEASE

*Licensed* **25 Years Exp.** *Insured*

## JONES BUILDING SYSTEMS

[www.jonesbuildingsystems.com](http://www.jonesbuildingsystems.com)  
 Office 479-644-6336 • Fax 479-657-6701



Metal Buildings  
 Mini Storage  
 Metal Roofing  
 Site Work and Concrete

★ No Dirt, Tax or Delivery Included Yet ★

**RED IRON**  
 Installed Includes Slab  
 100x125x16  
 Insulated  
 Incl. 4 O/H &  
 4 W/I Doors  
**CALL FOR PRICE**

Call about  
 Mini Storage  
 Buildings

**RED IRON HAY BARN**  
 40x75x16 Installed  
 Roof only w/piers  
**\$35,654**

**RED IRON HAY BARN**  
 Installed  
 64x75, Roof only  
 w/piers  
**\$50,568**

★ Commercial & Residential ★ Heavy Built All American Steel★

The Big Nickel is published every Thursday.  
 © Phillips Media Group 2021. All Rights Reserved



## BIG NICKEL

**B Section Index**

**AGRI-BUSINESS ..... Page 02**  
 Metal Buildings..... Page 02  
 Equipment & Supplies .... Page 03  
 Cattle ..... Page 07  
 Farms & Acreage ..... Page 07  
 Hay/Feed/Seed..... Page 07  
 Horses & Mules..... Page 07  
 Livestock-AGRI..... Page 07  
 Land/Pasture ..... Page 07  
**YARD SALES ..... Page 07**  
 YS-Garage Sale..... Page 07

**AUCTIONS & ESTATE SALES..... Page 07**  
 Auction Sales ..... Page 07

**Big Nickel Classified Options**

To place a classified Call 417-624-4100,  
 e-mail [classified@bignickel.com](mailto:classified@bignickel.com)

When you place a classified with the Big Nickel you have many options to enhance your classified and make it stand out above the others. Here are a few of the options available:

- Baxed \$2.00 • Bold & Capitalize [First 5 Words] \$2.00
- Graphic Options \$5.00 ea. • Super Graphic \$5.00
- Include Email address \$2.00 • Add a Picture \$5.00
- Include URL \$2.00 • 100% Reverse [Baxed/Boldcaps] \$5.00

**Classifications**

**B Section**

**AGRI-BUSINESS**  
 Metal Buildings  
 Equipment & Supplies  
 Cattle  
 Farms & Acreage  
 Hay/Feed/Seed  
 Horses & Mules  
 Livestock-AGRI  
 Land/Pasture  
 Farmers Market

**YARD SALES**  
 YS-Garage Sale  
 YS-Surrounding Counties

**AUCTIONS & ESTATE SALES**  
 Auction Sales  
 Auctioneers  
 AES-Surrounding Counties  
 Auction Reminder  
 Service Directory



# OPEN

**NOBODY BEATS OUR PRICES**

Sale Ends December 31, 2022  
 Seymour, Missouri 417-935-4201

**Pole Barns & Post Framed Buildings!**

23'x32'x10' \$7,250 Material Only \$9,090 Labor Included	23'x40'x10' \$8,300 Material Only \$10,600 Labor Included	30'x40'x10' \$10,100 Material Only \$13,100 Labor Included	40'x60'x12' \$17,625 Material Only \$23,985 Labor Included
--	---	--	--

**NOBODY, BUT NOBODY BEATS OUR PRICES!!!**

10 ft. Slider • Engineered Trusses 8' O.C. • 2x6 Treated Bottom Wrap • Screws • 2x10 Top Wrap • 2x4 Purlins • Full 29 Gauge Steel • Plus 3 ft. Entry Door with Lock

OPTIONS: Sidewall Heights on all Buildings 10', 12', 14' & 16'. Overhead Garage Door, Skylights, Insulation, Wainscoting, Insulated Vinyl Windows, Cupolas. Labor Rates Slightly Higher over 50 Miles from Seymour. Call for YOUR FREE QUOTE TODAY!!!

<b>PAINTED WHITE, GREEN OR TAN METAL .....\$99.99</b>			
10' - \$31.70	12' - \$38.04	16' - \$50.72	
<b>MIX &amp; MATCH METAL .....\$59.99</b>			
8' - \$15.20	10' - \$19.00	12' - \$22.80	
<b>GALVALUME METAL .....\$79.99</b>			
10' - \$25.40	12' - \$30.48	16' - \$40.64	
<b>GALVANIZED CORRUGATED METAL SOLD OUT!</b>			
8' - \$9.84	10' - \$12.30	12' - \$14.75	16' - \$19.67

**LOTS OF MATERIAL AVAILABLE FOR THOSE IN HOME PROJECTS!**

**NEW PACKAGE HOMES**



2x6-16" on center-Exterior Stud Walls  
 Residential Roof Trusses-2' on center  
 4/12 pitch with 1' over hang  
 40 year Painted Metal roofing in 20 Different Colors  
 Profile Ridge Vent - Ventilated Ridge Cap  
 Vinyl Center Vent Soffit  
 Color Matched Metal Fascia & Gable Trim  
 2 - 3' 6" Panel Entry Doors  
 4 - 3'x4' Vinyl Insulated Windows

Your Choice of either:  
 Stock 5/8" T111 Siding w/1x4 Pine Window & Door Trim  
 OR  
 7/16" OSB & House Wrap ready for other finish options

**ALL FIGURED FOR SUITABLE CUSTOMER SUPPLIED SLAB OR SUB-FLOOR**

Price for Basic Materials Package (No Labor at this Time)

20x24(480 sq. ft.)	20x32(640 sq. ft.)	20x40(800 sq. ft.)	25x40(1120 sq. ft.)	25x45(1344 sq. ft.)
\$9,490	\$10,839	\$12,339	\$15,129	\$18,729

Call for free quote, brochure & color chart. Other sizes also available.



Due to increased demand for our quality product we are currently hiring new barn construction crews. Contact Jeff

40yr Painted Metal <b>\$99.99<sup>Sq</sup></b>	<b>KNOTTY PINE DOORS</b> Starting at <b>\$164.99</b>
---	--

**IN STOCK**

\*\*Prices subject to change without notice\*\*  
**LP SMARTSIDE T-5 LAP 8 GRADE \$43.59<sup>SQ</sup>**

<b>Car Siding!</b>	<b>4x8 Sheeting</b>
1x6 White Pine Siding <b>79¢</b> in ft	3/8" Beaded Paneling \$24.99
1x8 White Pine Siding <b>\$1.05</b> in ft	5/8" T111 Siding \$28.99
* 4 Profiles to choose from! Broken Bundles Add 10¢ Per Ft.	Paneling \$5.00
	1/2" Plywood \$5.00
	3/4" Plywood \$29.99
	3/16 Pegboard \$12.99

**REAL WOOD SIDING**

2x6 Log Siding \$1.96 in ft  
 1x8 Beveled Cedar from- 99¢ in ft  
 T1-11 Siding from \$28.99

**DECK PACKAGES**

Materials Only

8x8.....\$349.00	10x12.....\$699.00
10x10.....\$499.00	10x16.....\$819.00
12x12.....\$899.00	12x16.....\$1179.00

**QUAKER** Now Stocking Quaker Vinyl Windows

2030 \$163.99	3030 \$189.99
3040 \$206.99	3052 \$225.99
3040Twin \$453.99	3052Twin \$497.99



## DEADLINES

**CLASSIFIED LINE AD DEADLINES**

AUCTIONS	B SECTION	A SECTION	VEH SECTION
10am • Mon.	10am • Mon.	3pm • Mon.	3pm • Mon.

**DISPLAY AD DEADLINES**

AUCTIONS	B SECTION	A SECTION	VEH SECTION
Noon • Wed.	Noon • Thurs.	Noon • Thurs.	Noon • Thurs.

## METAL BUILDINGS



# IDEAL

## STRUCTURES LLP

Specializing in Pole Buildings, Garages, Shops, and General Construction

Marion Sommers PHONE: (479) 335-6230  
 EMAIL: [MarionSommers69@gmail.com](mailto:MarionSommers69@gmail.com)  
 Hindsville, AR 72738

## EQUIPMENT & SUPPLIES



## BO'S ONE STOP

Polyethylene culvert pipe  
 4" to 36" dia. smooth bore, corrugated outside.

CALL: (620) 231-6305  
 1116 W 4th Pittsburg, KS

## PRECISION EXCAVATING

Building Pads - Ponds - Concrete  
 Septics - Roads & Driveways  
 Land Clearing Demolition  
 & much more

Matthew Zimmerman  
 Wyandotte, OK  
**918-961-2183**

*Customer Satisfaction Is Our Goal!*



**KIOTI** *Since John's Tractor Works & Equipment Inc. 1985*  
 YOUR AGRI. DIESEL SERVICE SPECIALIST

Mon-Fri 8am-5pm  
 Sat 8am-Noon  
 3 miles East of Vinita,  
 OK on Hwy 60  
 Serving the 4 State Area  
 for over 35 years  
**918-256-5774**



**RX** 66-73 HP  
**0%** UP TO **48** MONTHS FINANCING\* OR **UP TO \$6500** CASH BACK\* (T-L-B)



**CX** 25 HP  
**0%** UP TO **84** MONTHS FINANCING\* OR **UP TO \$2400** CASH BACK\* (T-L-B)  
**6 YEAR UNLIMITED HOUR POWERTRAIN WARRANTY**

**WINTER SALES EVENT** Receive an Additional **\$750** Cash Rebate\*\*  
 Combine with Cash Rebates (excludes 0% financing).  
 Eligible Units: CS Series, CX Series and CK2610 models.



**CS** 22-25 HP  
**0%** UP TO **84** MONTHS FINANCING\* OR **UP TO \$2400** CASH BACK\*  
**6 YEAR UNLIMITED HOUR POWERTRAIN WARRANTY**

**WINTER SALES EVENT** Receive an Additional **\$750** Cash Rebate\*\*  
 Combine with Cash Rebates. Good thru 12/31/22.  
 Eligible Units: CX Series and CS Series models.



**NS** 45-60 HP  
**0%** UP TO **48** MONTHS FINANCING\* OR **UP TO \$4300** CASH BACK\* (T-L-B)

**INTERSTATE POLE**

NO SUNDAY CALLS, PLEASE



- ★ Commercial ★ Mini Storage ★ Garages ★
- ★ Horse Barns ★ Shops ★ Agriculture ★

Darrell Knepp • Sarcoxie, MO  
 417-437-1452 • interstate.buildings@privategarden.org

**YOUR AUTHORIZED GOOSENECK™ DEALER**



**FRYE FARMS**  
 The #1 Dealer in Missouri for Gooseneck Sales \$s in 2004-2022.  
 Reason: PRICE!

Trade In's Welcome!



**FRYE FARMS TRAILERS**  
 Seneca, MO • 417-438-0146

**EQUIPMENT & SUPPLIES**

2009 JOHN DEERE 630 hydraflex with 30' Wemco trailer, new sickle and guards 200 acres ago, high dam, height control in rigid position. Always stored inside, \$14,500. 417-235-8547.

2020 NEW Holland RS 450 baler, net twine, wide pick-up, auto tie, (930) bales. 918-255-6508.

**EVERYTHING** a Cattle Producer needs in **ONE Place**



**GOBOB**  
 America's Ranch Equipment

**BEST PRICES GUARANTEED**

**CALL NOW**  
 BigGoBob.com  
 855-880-7961

**BEDS IN STOCK! CALL FOR PRICING!!**

**HEAVY DUTY FLATBED**



CALL US BEFORE YOU BUY A BED!

We also carry Roll-off and Rearload **TRASH CONTAINERS**

Steel Sales and Fencing Supplies

**Atlas Steel Products, Inc.**  
 650 ESH ROAD • VINITA, OKLAHOMA  
 877-289-7835 • 918-256-6232





The World's #1 Selling Farm Tractor!

# LAMBERT

Tractor & Machinery Sales, L.L.C.

The Largest Mahindra Dealer in Kansas!

8001 S.E. Hwy 66, Galena, KS

www.lamberttractor.com

620-783-1895

We are Open. Curbside Service Available



\*2018 data including all Mahindra brand sales

NO DPF FILTER TO SERVICE OR REPLACE SAVES YOU TIME AND MONEY NO DOWNTIME NEEDED FOR REGENERATION

**7 YEAR**  
LIMITED POWERTRAIN  
WARRANTY

Buy any  
**NEW TRACTOR,**  
and get a 4, 5,  
or 6-ft. cutter  
**HALF PRICE!**



**Mahindra 6075 cab tractor, 4x4, with loader, power shuttle**  
.....**\$715/MO**  
\$0 Down, 84 Month Financing Available W.A.C.



**Mahindra 2638 HST, 38hp, quick attach loader & quick attach bucket, 4x4**  
.....**\$389/MO**  
\$0 Down, 84 Month Financing Available W.A.C.



**Mahindra 1626 Shuttle, w/loader, 4x4, 26 HP**  
.....**\$312 /MO**  
\$0 Down, 72 Month Financing Available W.A.C.



**Mahindra 4550 Gear, w/loader, 4x4, 50 HP**  
.....**\$375/MO**  
\$0 Down, 84 Month Financing Available W.A.C.



**Mahindra 5145 Shuttle, w/loader, 4x4, 45 HP**  
.....**\$393/MO**  
\$0 Down, 84 Month Financing Available W.A.C.

**STIHL**

**BLOWERS**  
STARTING AT  
**\$149<sup>99</sup>**

LAMBERT TRACTOR  
620.783.1895

**BUSH HOG**  
Performance You Can Count On™

Bush Hog 11251720F Double Bale Spear, SKU .....**\$699.00**  
 Bush Hog Pallet Fork, SKU .....**Starting at \$799.00**  
 Bush Hog RT72G-1X, 72" Tiller, 3point .....**\$3,500.00**

**STIHL**

**CHAIN SAWS**  
STARTING AT  
**\$189<sup>99</sup>**

CHAIN SAW  
CHAIN  
SPECIALS!

LAMBERT TRACTOR 620.783.1895

**BAD BOY MOWERS**

LAMBERT TRACTOR  
620-783-1895  
8001 S.E. HWY. 66,  
GALENA, KS

# USED Equipment

- Used Zero Turn Mowers..... starting at \$2,999
  - 2019 Kioti SM2210 Tractor, 296hrs, HST, 60" belly mower, loader, 4wd .....**\$12,500.00**
  - Ford 600 tractor 2 WD, 12 V system, good tires, 5 ft. brush hog..... **\$2,750.00**
  - 2022 Mahindra 1626 Shuttle, 4hrs, loader, 4wd, new Agri 5' cutter ..... **\$20,500.00**
  - 1998 Massey Ferguson 231, 38hp, 2339hrs, loader, 2wd, new front tires.... **\$9,995.00**
  - 2017 Mahindra 2565 shuttle, 65hp, 998hrs, 4wd, loader,  
Cab w/Heat-n-Air ..... **\$28,500.00**
- See Full Line Of Used Equipment & Implements At  
**lamberttractor.com**

670969ch

## RESIDENTIAL

**HUSTLER** TURF EQUIPMENT

**MADE IN THE USA**

# RAPTOR

SERIES

Lambert Tractor  
620-783-1895  
8001 S.E. Hwy. 66, Galena, KS

AVAILABLE DECK SIZES <b>42" &amp; 54"</b>	AVAILABLE DECK SIZES <b>42" &amp; 54"</b>	AVAILABLE DECK SIZES <b>42" - 60"</b>	AVAILABLE DECK SIZES <b>48" - 60"</b>



# GUNS, AMMO, KNIVES & MORE

**1** **FORT SCOTT GUN & PAWN**  
www.fortscottga.com 1402 E. Wall Street  
www.facebook.com/fortscottga 620-222-0583  
"We ain't pretty... but we're CHEAP!"

**2** **LIBERTY TREE**  
Mon-Sat 10am-6pm  
530 W. Fir Rd  
Carthage, MO 64836  
417-358-5700  
LTGUNSHOP.COM  
GUNS-AMMO-SUPPLIES-CONCEALED CARRY TRAINING

**3** **GUNS & AMMO**  
BUY \* SELL \* TRADE  
**QUICK DRAW GUN**  
801 South Kyler, Monett MO • 417-354-8833

**4** **Jasper Gun Room**  
Vintage - Pro Target - Historical  
Hunting - Protection - Blades  
& Accountments  
1410 S. Main St.  
Joplin MO 417-825-4010

**5** **STEVE'S TRADING POST**  
Joplin, Missouri  
4324 South Main  
417-782-9600  
Green Forest

**6** **MAD MAN MOTOR GUN & PAWN**  
"..the right of the people  
to keep and bear arms  
shall not be infringed."  
401 WEST COLER  
NEOSHO, MO 64850 417.355.2514

**YOUR AD COULD BE HERE!**  
**CALL 417-624-4100**

# GUNS, AMMO, KNIVES & MORE



WALT'S TRACTOR - SERVING YOU FOR OVER 55 YEARS • WALT'S TRACTOR - SIMPLY THE BEST FOR LESS • WALT'S TRACTOR

# Get More with LS Tractor!!

Excell In Your Field™

**Because you want to work your land, not on your tractor.**

Continuing more than 30 years of excellent value, performance, and exceptional customer satisfaction established by our founding company LG, we are so confident in the quality of our tractors, we back each one with our 6 year limited warranty.



**0% Down / 84mos (WAC)  
Free Loader**



More Tractor, More Value, More Satisfaction

**Since 1967** **Walt's Tractor LLC** **55 Years**

**417.472.7200**  
12 Miles East of Neosho on Hwy. 86

**Last Chance for 2022 Pricing!**

- 127V/52
- 127V/61

**0% for 48 months available WAC**



IT'S SO MUCH MOWER™  
Financing Available (WAC)  
Built Tough for the Perfect Cut Every Time!



**Call For The Best Deals!**

**Winter Closeout!**

[www.waltstractorsales.com](http://www.waltstractorsales.com)  
Where Service is Always in Season!

**EQUIPMENT & SUPPLIES**

COMPOST, \$5 a bucket load. We will load if needed. Goodman, MO. 417-850-8016.

**CATTLE**

(10) YOUNG cows, with calves by side. 417-850-1726.

Limousin bulls, reds and blacks, large selection, bred and open Limousin heifers. Double J Ranch, Will 417-350-9810, 417-214-4567.

**CATTLE**



(200) Registered Angus bulls. 12-26 months old. Several AI sired. \$2000-\$5000. 417-262-3530.

[www.BIGNICKEL.COM](http://www.BIGNICKEL.COM)



(2) BRED Red Angus cross heifers, due in February, out of registered stock. Call or text for more information. 479-790-2644.

**BRANGUS BULLS**  
Gentle, small birth-weights. Bulls are service age, virgin bulls, semen checked, raised on forage, and ready to use.  
Hatfield Brangus  
Bentonville, AR  
Home 479-273-3921  
Cell 479-531-2605  
email: drchas@cox.net

**CRYSTAL SPRINGS LIMOUSIN.**  
Purebred Limousin Bulls, 12-36 months. Reds, Blacks and Whites. Heifers also. Most polled, bred for calving ease, calm. 38 years breeding Limousin. 417-540-0277.

REGISTERED RED ANGUS Heifer Bulls, from the Big Sky genetics out of Montana's Longspine Bull. 479-981-1613.

SimXAngus and PUREBRED Angus yearling Bulls for Fall breeding, \$2500. Parmley, Wyandotte. 918-964-1582.

CALL ABOUT our classified ad specials. 417-624-4100.

**LAND/PASTURE**

**PRECISION LAND SERVICES**

BBB Like us on Facebook

**WE CLEAR THE PATH TO YOUR DREAMS**

Contact us for a **FREE** consultation and start the process of reclaiming your land. We offer the most ecological form of land clearing.

**ON SITE ROCK CRUSHING:**  
Up to 6" rocks • New construction Yard Preparation  
No small stumps after mulching  
[precisionlandservicesllc.com](http://precisionlandservicesllc.com)

**Low Impact Eco-Friendly Land Clearing & Brush Cutting**

**Before** **After**

Contact us for a free estimate **417-846-3723**

Contact us for a free estimate **417-846-3723**

**AGRI-BUSINESS**

**CATTLE**

**REGISTERED CHAROLAIS**  
Yearling Bulls. EPDs, BW, WW, YW, big and stout. Weaned heifers and bulls.  
Wright's Charolais,  
Mt. Vernon, MO.  
417-466-3560,  
573-512-1614  
417-466-8117  
417-466-8158

Registered Red Angus and Sim-Angus Bulls, yearlings-2 year aged advantaged bulls.  
**DIAMANTE RED ANGUS RANCH**  
Diamond MO.  
Herdsman Jarrod Todd  
417-846-3248,  
417-325-6292.

**REGISTERED ULTRABLACK & BRANGUS BULLS**  
Replacement Heifers. New/Top bloodlines. Gentle.  
Delivery available. Lots of happy customers!  
**Discounts for Veterans!**  
[Horseheadranch.net](http://Horseheadranch.net).  
918-695-2357

**Schlatter Herefords**  
Attamout, KS

**REGISTERED POLLED HERFORD BULLS** 19 months old right now, with good dispositions and genetics.  
620-778-8561.  
[schlatterherefords.com](http://schlatterherefords.com)

**HAY/FEED/SEED**

**QUALITY FEED at Affordable Prices.**  
16% mixed feed, \$340 a ton,  
\$330 in bulk;  
dry distiller grain, \$400 ton;  
16% mixed feed in 50lb sacks \$10  
1200lb. box on pallet \$204  
Bulk price \$10 off board price.  
Alfalfa, \$10  
Grass sq. bales, \$7 while they last!  
Straw \$4.  
Call for details. [colleyfeed.com](http://colleyfeed.com)  
Located 4 miles west of Stotts City on Farm Road 2120.  
Contact: Lance 417-316-0574.  
Prices subject to change without notice.  
Call to inquire.  
Ask about delivery in bulk or super sacks.

CALL ABOUT our classified ad specials. 417-624-4100.

**Goswick Services**  
AGRICULTURE

**ROCK HAULING  
LIME SPREADING & FERTILIZER**

**417-438-1110**

**HORSES & MULES**

**HEARTLAND HORSE AND LIVESTOCK SALES LLC**  
535 N. Subway Blvd.  
Nevada, MO

No Sales Nov. 23 and Dec. 28. Happy Holidays!  
**SALES 2nd and 4th Wednesday of the month**

Like us on Facebook @Heartland Horse and Livestock Sales LLC for future consignments.

**Owners:**  
Nathan Collins 620-215-4745  
Karrie Collins 620-644-2197

**Tack Sale Starts at 5pm with horses and livestock to follow.**

**RANCH TIME ACCESSORIES**  
LOOK GREAT FOR LESS...

- \* CUSTOM HATS
- \* HAND MADE BOOTS
- \* WILD RAGS
- \* WESTERN DECOR
- \* COWHIDES & GIFTS
- \* PURSES & WALLETS

NOW OPEN \*NWA MALL FAYETTEVILLE, AR 417-635-7777 \*Exit 46 • Mt. Vernon Blvd. Mt. Vernon, MO.

**HAY/FEED/SEED**

**HAY: 1st, 2nd and 3rd cutting Mixed grass, 4x5 round bales, net wrapped. No rain. Also have Silage for sale. Call 417-652-7364 or 417-235-9712.**

**HAY FOR SALE:** Bermuda, Fescue, and Clover mixed, 4x6 bales, \$80 each. 417-461-4355.

Small square bales of orchard grass, horse quality; big squares of Bromegrass hay; also round grass hay. 417-850-1726.

**WANT TO BUY: Chicken litter in the house. Call 417-235-9712.**

**FARMS & ACREAGE**

(40) ACRES pasture, mostly Fescue & Bermuda fenced, nice pond, on Hwy., 30 minutes west of Joplin. 620-762-1970.

**FOR SALE:** Cattle Ranch with (170) acres with (2) homes, plus outbuildings, live spring waters, very private and quiet. Anderson, MO. 417-461-4355.

**LIVESTOCK**

**POULTRY HOUSE REMOVAL**  
We buy good quality chicken and turkey houses. Remove the houses and all deconstruction debris. Local professional crews. Serving since 1992.  
**Cedar Creek Contractors, LLC 785-217-3379.**

**AUCTIONS & ESTATE SALES**

**AUCTION SALES**

\$\$\$  
**CASH BUYING**  
COINS, GOLD, SILVER, JEWELRY, DIAMONDS, SAFES, OAK ANTIQUES, BRASS MICROSCOPES, MOBILITY SCOOTERS, ELECTRIC WHEELCHAIRS, ARROWHEADS, ANVILS, GUN COLLECTION, AMMO  
417-437-5317 DR. HAMLIN



**FIND THE PERFECT PET FOR THE PERFECT PRICE IN THE PERFECT PLACE FOR DEALS**

Find your next fluffy, feathered or furry friend in your local newspaper classifieds!



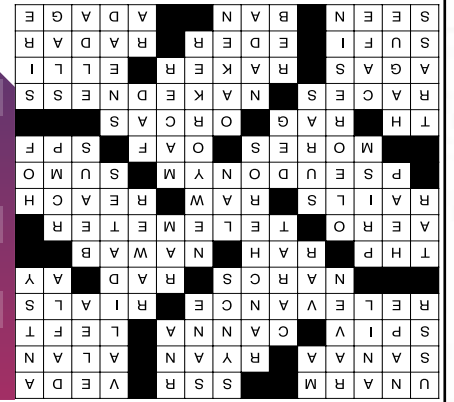




# BRAIN GAMES

## -CROSSWORD- PUZZLE

-DECEMBER- WEEK 3



### CLUES ACROSS

- Take weapons away from
- Soviet Socialist Republic
- Most ancient Hindu scriptures
- Actress Lathan
- Baseball's strikeout king
- British codebreaker Turing
- One who lives by disreputable dealings
- Tropical American plant
- Opposite of right
- Importance
- Monetary units
- Lawmen
- Cool!
- Affirmative answer
- Thrust horse power (abbr.)
- Bravo! Bravo! Bravo!
- Muslim nobleman
- About aviation
- Scientific instrument
- Protests strongly
- Not polished
- Grab
- Alias
- Large wrestler
- Relative quantities
- One who is big and awkward
- Sunscreen rating
- Atomic #90
- Mock
- Whales
- Peoples
- A state of being unclothed
- Ottoman military commanders
- Gatherer of fallen leaves
- Norse personification of old age
- Muslim mystic
- German river
- Measuring instrument
- Have witnessed
- Disallow
- Proverb

### CLUES DOWN

- Union of Soviet Socialist Republics
- The back side of the neck
- A type of imine
- Black bird
- Partner to "Pa"
- Puts together in time
- Lucid
- Transmits genetic information from DNA to the cytoplasm
- Demonstrates the truth of
- Ancient Greek City
- Nishi language
- Slang for fidgety
- Southwestern farmers
- Metric weight unit
- Instant replay in soccer
- Less polished
- Popular pickup truck model
- Slang for a cigarette
- Large pile
- Solid geometric figure
- One from the Big Apple
- Male admirers
- Balsam is one
- Local area network
- Canadian law enforcers
- Koran chapters
- Cooperstown, NY museum (abbr.)
- Certificate (abbr.)
- An official who carries a mace of office
- Briefly in fashion
- Volcanic ash
- Dutch city
- Made of wood
- Legendary golfer
- Restaurant
- None
- Spanish city
- Stony waste matter
- Father
- Confederate soldier
- The ancient Egyptian sun god

## CRYPTO FUN

Solve the code to discover words related to cold and flu. Each number corresponds to a letter. (Hint: 9 = F)

- A. 1 10 12 9 9 17 2 1**  
Clue: Nose issue
- B. 15 19 26 14 13**  
Clue: Expels mucous
- C. 1 11 26 9 9 25**  
Clue: Congested
- D. 9 2 6 2 21**  
Clue: High body temperature

Answers: A. sniffles B. cough C. stuffy D. fever

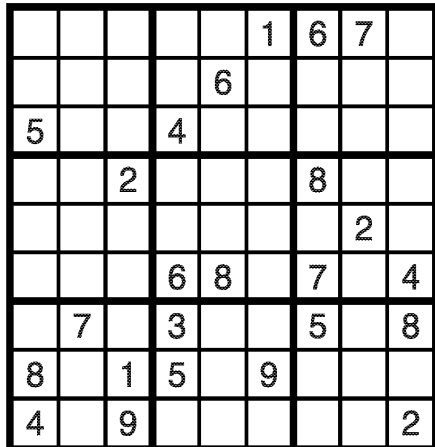
## WORD SCRAMBLE

Rearrange the letters to spell something pertaining to colds.

STUESI

\_\_\_\_\_

Answer: Tissue



### Fun By The Numbers

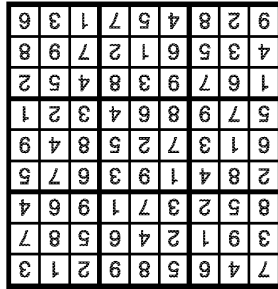
Like puzzles? Then you'll love sudoku. This mind-bending puzzle will have you hooked from the moment you square off, so sharpen your pencil and put your sudoku savvy to the test!

### Here's How It Works:

Sudoku puzzles are formatted as a 9x9 grid, broken down into nine 3x3 boxes. To solve a sudoku, the numbers 1 through 9 must fill each row, column and box. Each number can appear only once in each row, column and box. You can figure out the order in which the numbers will appear by using the numeric clues already provided in the boxes. The more numbers you name, the easier it gets to solve the puzzle!

## -PUZZLE- SODOKU

-DECEMBER- WEEK 3



ANSWER:

## COLD & FLU WORD SEARCH

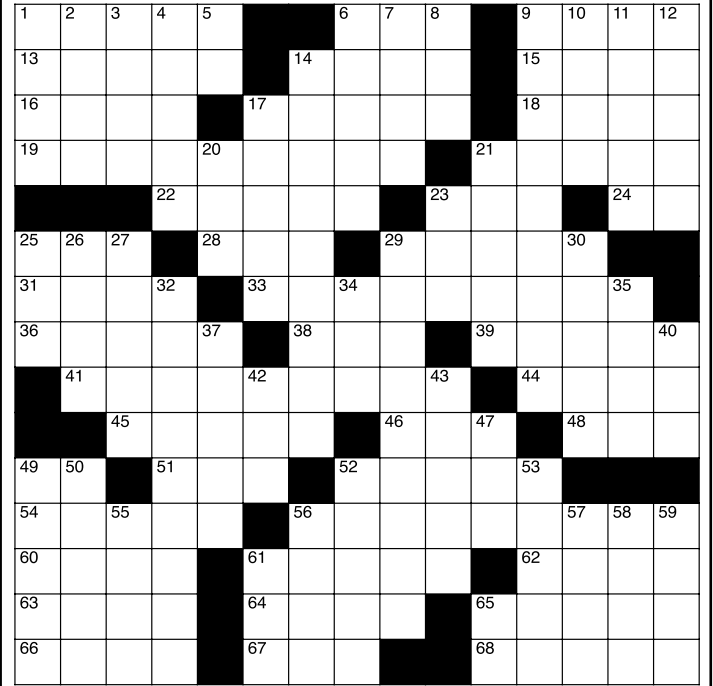
P G B M Z V Y A I H F T C S U G I I U F  
 M U Y S K R C I V Z U Q O G Y I L R F A D  
 B C N I G Y P T O I N C I H C C E L D I T  
 O F L S M N T E C F I U A D H A S U F T E  
 F E C I Z P T N T Q T U M S A I M T E F E  
 P V B N U B U S O D N N L C L T C N C K  
 P S P F S F E U R P A H E A L E Y Z O N  
 T O G E A U L I C R A A E B S H G V A U A  
 G Q E C P B O I G A A N C A P S E H C A G  
 F D R T H M Z I U F U F C O I A U A H B  
 K A M K L V E L G B Q O E K F C B T I Y  
 Q A S Y E D L D A A N C M Z R P F G N L  
 H U Q S G I L C I G T Z Q S E S G Q G T  
 D I C N M I T Q E C P N N F T E A Q A P  
 Q M R D L E I S N A I S O V E F N C S Z  
 B I L M R L T V I I H N I C U T S S K M  
 N U R I M I O N M E K R E K P N A E L C  
 H Q A N O K S I I Z U S A N I T I Z E K  
 C P T N N F I B S S T M U C O U S S I U

### WORDS

- ACHES
- BACTERIA
- BLANKET
- CHILLS
- CLEAN
- CONGESTION
- CONTAGIOUS
- COUGHING
- DISINFECT
- DOCTOR
- GERMS
- HUMIDITY
- ILL
- INFLUENZA
- MEDICINE
- MUCOUS
- PAIN
- PHLEGM
- QUARANTINE
- REST
- SANITIZE
- SLEEP
- SNEEZE
- VIRUS

## -WORD- SEARCH

-DECEMBER- WEEK 3



### IMPORTANT MESSAGE

# DID THIS GET YOUR ATTENTION?

Was your answer yes?  
 Don't you think potential customers said the same?  
 Why not advertise your business here instead?



Contact us today to place your ad here: **417.624.4100**



**AUCTION SALES**

**CLINES EQUIPMENT CO., LLC  
WINTER CONSIGNMENT AUCTION**

**Saturday, January 7, 2023**

Clines Equipment Co., LLC, 20133 Lawrence 2220, Aurora, MO  
Located 1 mile East of Junction 60 & Hwy. 39 on US Hwy 60,  
or .9 miles west of Business 60 on US Hwy. 60

**We Are Taking  
Consignments  
NOW!**  
THREE LARGE FARM SELL  
OUTS ALREADY CONSIGNED!

FOR MORE INFORMATION CALL  
OFFICE 417-678-0049 OR CELL 417-830-0912

Pictures and additional listings may be seen  
at [HTTPS://WWW.AUCTIONZIP.COM/LISTINGS/](https://www.auctionzip.com/listings/)

**TRUCKING  
AVAILABLE  
IF NEEDED.**

**Restaurant Equipment and Fixtures  
Contents of King's Palace**

**Wednesday, Dec. 28 • 1 p.m.**

1401 Rangeline Road, Joplin, MO

**RESTAURANT EQUIPMENT & FIXTURES**

6 buffet bars; Front register counter; Ice cream machine;  
41+ dining tables; 3 booths; 12 booth sets; Chinese art  
pictures (hang on wall); Metal racks on wheels' Lots of  
dishes; Lots of kitchen tools; 2 walk in coolers; Commercial  
dishwasher; Credit card machines; Digital cash registers.  
**Lots more miscellaneous too numerous to mention.**

**CHESNUTT & CHESNUTT**

800-809-2790 • 620-795-2365  
Mobile: 620-423-9431

"More Than 15,000 Professional Auctions!"  
[www.chesnuttauctioneers.com](http://www.chesnuttauctioneers.com)

**COL. ODDY CHESNUTT**  
Real Estate Brokers  
KS / OK / AR / MO

**ESTATE AUCTION**



**Friday, December 30, 2022**

**STARTS @ 9:47 AM**

**Address:** MAYES COUNTY FAIRGROUNDS • 2200 NE 1st St. • Pryor, OK

**Directions:** From Jct Hwy 69 & Hwy 20 in Pryor, OK go E ½ mile on Hwy 20 to Elliott St. Turn L onto Elliott St. and  
then immediately R onto NE 1st St./ Old Hwy 20. Go E 1 ¼ miles - Fair Grounds on R. Watch for signs.



**For More Info & Pictures -  
[www.chuppsauction.com](http://www.chuppsauction.com)**

**150 + GUNS - AMMO and ACCESSORIES**

**GUNS, MILITARY, RIFLES, PISTOLS,  
SHOTGUNS, BLACK POWDER,  
COLLECTOR'S GUNS - Some Rare  
LOTS of AMMO and ACCESSORIES**

**Don't Be Late  
RUNNING  
ONLY 1 RING!**

**Gun Collector's  
DREAM  
AUCTION!**

**Auctioneer's Note:** GUNS will not be on site until the morning of auction. No viewing until 7:30 AM Dec 30.  
We will be selling ammo and accessories first, followed by the guns. We will only be running 1 AUCTION RING.  
Follow us on Facebook for updates or visit our website for pictures at [www.chuppsauction.com](http://www.chuppsauction.com)

**TERMS:** Cash - Credit Cards - Check with Proper ID - OK Sales Tax Applies unless exemption is shown.  
NOT RESPONSIBLE FOR ACCIDENTS. ANY ANNOUNCEMENTS DAY OF SALE SUPERSEDES PREVIOUS ADVERTISING.

**CHUPPS AUCTION & REAL ESTATE**

**Stan Chupp**  
(918) 638-1157

**Dale Chupp, Realtor**  
Coldwell Banker Neokla Select  
(918) 630-0495

**Jonathan Miller**  
(918) 237-7582

**TRUCK & TRAILER AUCTION**



**THURSDAY, DECEMBER 29**

**220+ ITEMS SELL  
NO RESERVE!**



**KC9414**  
**'10 Peterbilt 389**  
**semi truck**



**DQ1933 '19 Int'l HX520**  
**semi truck**



**DM4896 '18 Mack GU713**  
**dump truck**



**DM2528 '12 Kenworth W900**  
**semi truck**



**JU9863 '13 Landoll 440L**  
**drop tilt deck equipment trailer**

**INVENTORY INCLUDES:** semi trucks, dump trucks, lowboy equipment trailers, drop tilt deck equipment trailer, flatbed trucks,  
grain trailers, bottom dump trailer, ready mix truck and more. All items are sold "AS IS." 10% buyers premium applies.

**BID NOW! [purplewave.com](http://purplewave.com)**



FIND THE  
**PERFECT PIECE**  
FOR THE  
**PERFECT PRICE**

*Find the stuff you want and sell the stuff  
you don't in the newspaper classifieds.*

FIND THE  
**RIGHT RIDE**  
FOR THE  
**RIGHT PRICE**

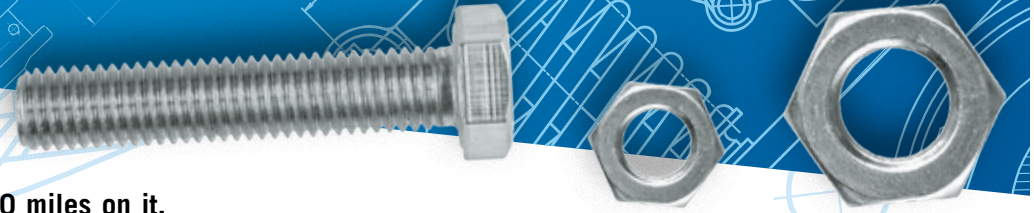
*Find the stuff you want.  
Sell the stuff you don't.  
Save time and money with  
the newspaper classifieds!*





# ASK THE MOTOR MEDICS®

Automotive Advice from the Under The Hood® Show



Dear Motor Medics,

I have a 2003 Chevy suburban with 200,000 miles on it, but it runs and looks great! No really...I'm serious. I want to know is about the tire pressure monitors and if I can reset them at home. The owner's manual says I can. I service the vehicle regularly and they charge me for resetting the monitor every time I have the tires rotated but the rotation is free with the oil change. Love the show!

Thank you,  
Myron in Kansas City Missouri

Dear Myron,

Tire pressure monitors on this vehicle can be reset at home without special tools but not all vehicles are this way so you will have to spend the money in some cases. To reset the monitors on this vehicle is relatively simple. When the tires have changed positions i.e., rotating, a relearn must be done. Start by applying the parking brake, next turn the key to the on position then turn the headlamp switch from off to park lamp three times within five seconds of key on and the horn will beep twice. Now you must decrease the tire pressure starting with the driver's side front tire until the horn beeps. Move to the passenger side front tire then the passenger rear tire and last the drivers rear tire. When you are done with the last tire turn the key off and inflate the tires to the correct pressure. It gets easier once you have done it once.

Take care,  
the Motor Medics

Dear Motor Medics,

I broke my daughters' car, and she won't leave me alone about it. Never mind that I am the one who bought the car and pays for the insurance, the gas, the tires, I could go on forever but she's just not going to get it. I didn't even break it that bad. I borrowed the car and when I went to adjust the rear-view mirror it fell off. I'd tell you the story of what happened when she borrowed my car last, but she would never get over the embarrassment. Anyways, I am stuck with this mirror thing. The metal tab that should be stuck to the window won't stick. I have tried many kinds of glue and it just keeps coming off. Can you help me get this fixed so that I can get my life back?

Thank you,  
Helen in Duluth Minnesota

Dear Helen,

Isn't it fun how these things work? At least you didn't break something more serious. If you had, we could probably help you with that too. As for the mirror, you just need better glue. What you need is special glass glue for mirrors that is available at auto parts stores. Ask the counter guy and they will help. Make sure to follow directions exactly, cleaning as directed and don't over apply the product. When they say one drop, they mean it. Once installed it won't come off so be sure to align it right.

Take care,  
the Motor Medics

Dear Motor Medics,

I own a 2005 Chevrolet Impala that I bought used in March of 2006 with 8,000 miles. The vehicle now has 182,000 miles so it does not sit still very often. I have been having problems with the speedometer and other instrument cluster gauges not working correctly. Sometimes the speedometer will stick on 60 and not drop down until I shut off and restart the car. Is this a common problem with this type of vehicle and if so, how do I fix it?

Thank you,  
Doug in Minneapolis

Dear Doug,

We have repaired several of these, but many are still ticking with well over 200,000 miles on them. A general repair shop should be able to diagnose the issue and if they find that it is within the speedometer, they can replace the unit with a rebuilt unit that is available from most auto parts stores. The units come pre-programmed for easy installation. When they order the unit, it can take a couple of weeks or so as they need to send your vehicle information like mileage and identification number to the manufacturer of the unit so that they can enter it into the replacement. Once it arrives your shop can install the unit and they will have you sign a mileage affidavit stating that the mileage you gave them to enter the replacement was correct. They will then box up the old unit and send it back as a core.

Take care,  
the Motor Medics

Dear Motor Medics,

I have a 2005 Dodge Caravan SE that we bought used and it was not equipped with power windows, door locks, or power sliding doors. We would really like to add these features and keyless entry. Can this be done for a reasonable price and where do we go to get it done?

Thank you,  
Janet in Madison, Wisconsin

Dear Janet,

Power features have become standard on vehicles or at least it seems that way. More and more vehicles, especially ones that are used for hauling the family like a van seem to almost always have full power in them. It is a rarity for one to come into our shop that does not have at least power windows and locks, but they are out there. The cost of the accessories will be dependent on the shop and the quality. As for adding them to the front doors that should not be that big of an issue. Many companies offer aftermarket power windows and lock kits, and remotes can be added easily as well. The power sliding doors are another story and I have not seen anyone who makes an aftermarket unit for those but there may be out there. Power sliders can be very difficult to work on and I have fought with my share. Check around with local vehicle accessory shops that install cruise controls, air conditioning, remote starts, etc. These types of shops often install power accessories like this as well.

Take care,  
the Motor Medics

FOR ENTERTAINMENT ONLY • Always consult your local shop and follow all safety procedures before repairs.

Come visit the Motor Medics® online @  
[underthehoodshow.com](http://underthehoodshow.com)



# MELTON AUCTION & REALTY LLC

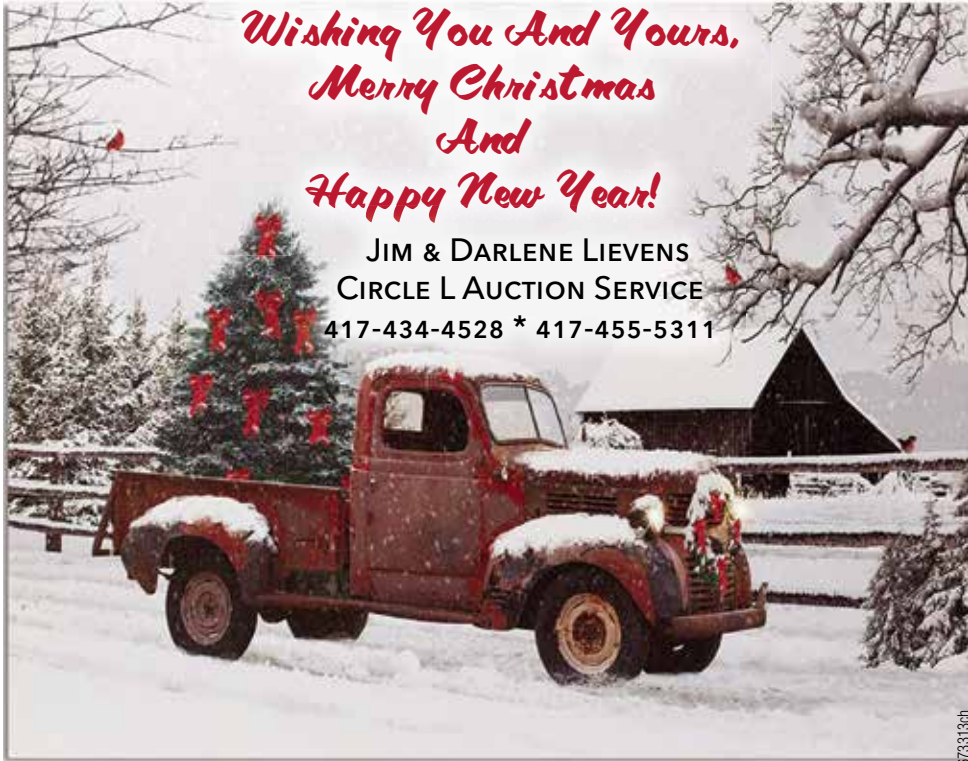
Family Owned Business with over 45 years  
Combined Experience and the Best Personal  
Service for ALL your Auction & Real Estate needs!!

- REAL ESTATE
- FARMS
- BUSINESSES
- PERSONAL PROPERTY



meltonauctionrealty.com

Licensed MO & AR  
417-830-0153



*Wishing You And Yours,  
Merry Christmas  
And  
Happy New Year!*

JIM & DARLENE LIEVENS  
CIRCLE L AUCTION SERVICE  
417-434-4528 \* 417-455-5311

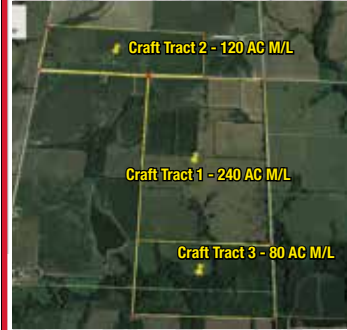
## AUCTION SALES

# ABSOLUTE AUCTION

**Estate of Nelson and Ruby Craft Trust**  
**Sat., Jan 7, 2023 10:00 AM**  
**20202 East Troop Rd. • Milo, Mo 64767**

Directions: From Milo Mo go East on E HWY to 1925 Rd Go South On 1925 to Troop Rd Go East on Troop 1 Mile

**\*\* ABSOLUTE AUCTION -- THIS PROPERTY WILL SELL \*\***



**440 ACRES M/L SELLING IN 3 TRACTS**  
Tract 1 - 240 Acres M/L - Part of this Farm is being Tilled at this time and a lot more could be  
Tract 2 - 120 Acres M/L - Mixture of Tillable and Pasture a lot of this Pasture could be Tilled  
Tract 3 - 80 Acres M/L - This 80 is pasture at this Time Some of it Could be Tilled. If you are looking for a Deer and Turkey Hunting Place this 80 acres will fit the Bill  
**ALL 3 - TRACTS WILL SELL AT TRACT 1 LOCATION**  
TERMS AND CONDITIONS: 10% of purchase price paid into escrow day of auction.



Jay Wortman  
Agent  
417-865-4721



Cole Abele  
Auctioneer  
417-684-0881

See additional pictures and info at [www.tncnevada.com](http://www.tncnevada.com)

## TOWN & COUNTRY AUCTION SERVICE



Doug Wortman  
Auctioneer  
417-448-9540

1700 W. Austin, Nevada

Any statement made day of sale will precede any printed material.

Office - 417-667-2966

**15 WORDS \$11.75**  
**- CALL THE BIG NICKEL TODAY AT 417-624-4100!!**

## The Classifieds

Your Local Market for Shopping and Selling!

NEW DEALS IN PRINT & ONLINE DAILY



Rentals, Homes, Garage Sales, Cars, Trucks, SUVs, Musical Instruments, Boats, Watercraft, Local Job Opportunities, Motorcycles, ATVs, Vintage, Appliances,

Antiques, Art, Collectibles, Computers, Electronics, Furniture, Gold, Jewelry, Tickets, Entertainment, Bikes, Sporting Goods, Equipment, Livestock, Announcements, Events, and so much more!

# FARM AUCTION

STARTS @ 9:58 AM



Wednesday, December 28, 2022

Address: 5254 N 595 Rd • Proctor, OK 74457

Directions: From Kansas, OK @ Jct of Alt 412 & Hwy 10 take Hwy 10 south 6 1/2 miles to N 604 RD/Chewey Rd, turn left (east) go 2.2 miles to S 4625 Rd turn right into Illinois River Ranch go 6/10 mile to E 635 Rd turn right go 1 1/2 miles (turns into 595 Rd) auction on left.



For More Info & Pictures - [www.chuppsauction.com](http://www.chuppsauction.com)

**TRACTORS, TRAILERS, HAY EQUIPMENT, 500+ BALES OF HAY, CATTLE EQUIPMENT, FARM IMPLEMENTS, BEEHIVES, OVERHEAD FEED BINS, CREEP FEEDERS, 4 WHEELERS, MISC SCRAP IRON and MUCH MORE!**

AUCTION STARTS @ 9:58 AM

LIVE ONSITE & ONLINE BIDDING ON LOTS 1-40 START @ 10:47 AM



**OWNER: TIM HAMMONS - OIL SPRINGS FARM LLC**

**Auctioneer's Note:** Due to divorce, Tim is liquidating his farming equipment. Equipment has been barn stored and is in IMMACULATE SHAPE, ready to go to work for you. Not many small items - Don't Be Late! WE WILL BE RUNNING ONLY 1 AUCTION RING. Please follow us on Facebook for updates or visit our website for pictures at [www.chuppsauction.com](http://www.chuppsauction.com)

**TERMS:** Cash - Credit Cards - Check with Proper ID - OK Sales Tax Applies unless exemption is shown. NOT RESPONSIBLE FOR ACCIDENTS. ANY ANNOUNCEMENTS DAY OF SALE SUPERSEDES PREVIOUS ADVERTISING.

## CHUPPS AUCTION & REAL ESTATE

Stan Chupp  
(918) 638-1157

Dale Chupp, Realtor  
Coldwell Banker Neokla Select  
(918) 630-0495

Jonathan Miller  
(918) 237-7582

673475jn

# There's a better way to get attention.

Keep life simple.  
Take out an ad.





# MAHINDRA



**#1 Selling Farm Tractor In The World!\*\***

- ✓ Push More
- ✓ Pull More
- ✓ Lift More

**7YR Powertrain Warranty on Most Tractor Series**  
**MOST MAHINDRA TIER 4 TRACTORS HAVE NO DPF, REGEN, OR DEF**



**0% for 72mo**

## MAHINDRA 4540 4WD

41HP, 4WD, w/Loader, 8x2 Gear Trans, 2866 lb Loader Lift Capacity, 3527 lb @ 3 pt Hitch, 5192 lb Tractor Weight

**Tier 4 No DPF or Regen**

**\$391<sup>88</sup>\*/MO.**

**0 DOWN, 0% FINANCING 72 MO WAC**



**0% for 72mo**

## MAHINDRA 4550 4WD

50 HP, 4 WD, w/Loader, 8x2 Gear Trans, 2866 lb. Loader Lift Capacity, 3527 lbs @ 3 pt Hitch, 5192 lbs. Tractor Weight

**Tier 4 No DPF or Regen**

**\$419<sup>65</sup>\*/MO.**

**0 DOWN, 0% FINANCING 72 MO WAC**



**0% for 72mo**

## MAHINDRA 2638 HST

38HP, 4WD, w/Loader, Hydrostat Trans, 1650 lb Loader Lift Capacity, 2646 lb @ 3 pt. hitch, 3130 lb Tractor Weight

**Tier 4 No DPF or Regen**

**\$372<sup>43</sup>\*/MO.**

**0 DOWN, 0% FINANCING 72 MO WAC**



**ONLY 1 LEFT**

## MAHINDRA 2660 4WD

60HP, 4WD, w/Loader, 12x12 Power Shuttle Trans, 1 set Remotes, 3100 lb Loader Lift Capacity, 3314 lb @ 3 pt Hitch, 4500 lb Tractor Weight

**Tier 4 No DPF or Regen**

**\$494<sup>85</sup>\*/MO.**

**0 DOWN, 3.99% FINANCING 84 MO WAC**

**MAHINDRA 6065 CAB**  
**\$672<sup>48</sup>\*/MO.**  
 Tier 4 No DPF or Regen  
**0 DOWN, 3.99% 84 MO FINANCING WAC**  
 62HP, 4WD, w/Loader, Cab w/H&A, 12x12 Power Shuttle Trans. **CALL FOR CASH PRICE**

## MAHINDRA PACKAGE DEALS

**MAHINDRA 1626 SHUTTLE**  
 25 HP, 4WD, w/Loader, w/ 5' Brush Cutter & 5' Box Blade  
**\$314<sup>57</sup>\*/MO.**  
 Call for Cash Price  
**0 DOWN, 2.99% 84 MO FINANCING WAC**

**MAHINDRA 1635 SHUTTLE**  
 35 HP, 4WD, w/Loader, w/ 5' Brush Cutter & 5' Box Blade  
**\$371<sup>19</sup>\*/MO.**  
 Call for Cash Price  
**0 DOWN, 3.99% 84 MO FINANCING WAC**

**MAHINDRA 1626 HST**  
 25 HP, 4WD, w/Loader, w/Mahindra 5' Brush Cutter & 5' Box Blade  
**\$349<sup>33</sup>\*/MO.**  
 Call for Cash Price  
**0 DOWN, 3.99% 84 MO FINANCING WAC**

**MAHINDRA 1640 SHUTTLE**  
 39HP, 4WD, w/Loader, w/5' Brush Cutter, & 5' Box Blade  
**\$398<sup>52</sup>\*/MO.**  
 Call for Cash Price  
**0 DOWN, 3.99% 84 MO FINANCING WAC**

**MAHINDRA 2638 HST**  
 38HP, 4WD, w/Loader, w/5' Brush Cutter & 5' Box Blade  
**\$405<sup>10</sup>\*/MO.**  
 Call for Cash Price  
**0 DOWN, 0% FINANCING 72 MO WAC**

## USED EQUIPMENT

(M) MO • (A) ARK

(M) MAHINDRA 1635 HST, 35HP, 4WD, W/LOADER.....	\$19,900
(M) BRANSON 2515R, 25HP, 4WD, W/LOADER, SHUTTLE TRANS.....	\$16,900
(M) BRANSON 5520 CAB, 55HP, 4WD, CAB(H&A), W/LOADER..	\$31,900
(M) JD 3032E, 32HP, 4WD, W/LOADER, HST TRANS .....	\$16,900
(A) KUBOTA B2320 HST, 23HP, 4WD, W/LOADER, BELLY MOWER.....	\$14,900
(A) BRANSON 4215CH, 42HP, 4WD, CAB(H&A), W/LOADER.....	\$31,900
(A) MAHINDRA 5155, 55HP, 4WD, W/LOADER .....	\$31,900
(M) MAHINDRA EMAX 22, 22HP, W/LOADER, GEAR TRANS.....	<del>SOLD</del> \$9,900
(M) KUBOTA L3400, 34HP, 4WD, W/LOADER, GEAR TRANS .....	\$16,900
(M) MAHINDRA 6075 CAB, 71HP, 4WD, W/LOADER, CAB W/H&A.....	\$38,900



**931 N. BUS. HWY. 71  
 ANDERSON, MO  
 417-845-3563  
 HOURS M-F 8-5 • SAT 8-NOON**

**1033 W. HENRI DE TONTI BLVD  
 (412 WEST), TONTITOWN, ARK  
 479-361-9488  
 HOURS M-F 8-5 • SAT 8-NOON**

**Mahindra Rise.**  
 www.tatummotor.com  
 e-mail: tatumtr@olemac.net

**MAHINDRA SUPERIOR PERFORMANCE:**  
 • Heavy-duty components: Tough & rugged... Keep right on performing day after day.  
 • Sturdier chassis: Greater stability... Keeps you safe while handling rigorous work.