

CELEBRATING  
OVER  
**40**  
YEARS



Established 1975

# BIG NICKEL

THURSDAY,  
OCTOBER 27, 2022

© Phillips Media Group, Inc. 2021. All Rights Reserved

2918 E. 20th St. • Joplin, MO 64804  
417-624-4100

www.bignickel.com

Volume XLVII Issue 43

**GOLD & SILVER of JOPLIN**  
**WE PAY MORE!**  
• Gold • Silver • Diamonds • Coins  
• Estate Buyers • Free Estimates  
**THE NAME YOU KNOW AND TRUST!**  
105 N. Range Line, Suite 2, Joplin, MO  
(US Bank - lower level. Next to the mall.)  
50 Years of experienced buyers.  
Discreet, Honest and Trustworthy.  
417-553-0068



We have opened a new showroom so you can get a new bathroom.

**\$500 OFF** tub or shower conversion  
**\$1000 OFF** complete bathroom remodel

Visit rebath.com for full terms & conditions. Locally owned and operated franchise.

At Re-Bath, we design beautiful, functional bathrooms—and provide the quality products to finish the look. Best of all, our licensed, insured, locally operated teams complete projects in days, not weeks. And now, you can save with our Grand Opening discounts. Schedule your FREE in-home consultation today.

**Neosho**  
(417)427-3885  
4400 Doniphan Dr.  
Neosho, MO 64850



Proudly Serving:  
SWMO • NWA • SEK/NEO

Complete Bathroom Remodeling  
Tub & Shower Updates  
Aging & Accessibility Solutions

## ATTENTION!

\$\$\$  
BUYING Classic antique cars and trucks. Running or not. Also gas pumps, tractors, farm equipment, old signs, and running newer vehicles. I pay cash up to \$1000/up. I buy one or all on property. Honest, trustworthy, and fair. Call ME! 417-234-5154.

## WANTED

BUYING JUNK CARS! We pay cash! No title needed. We pick up. Call/text 918-325-0791.

**Grumpy Grandpa HANDY MAN SERVICE**  
Insured and Bonded.  
417-793-4078.

YOUNG LIMFLEX BULLS. Black and polled, \$950; Bred cows and pairs, \$1200 to \$1800. 417-775-2419.

## CLINT RENNER LOGGING

Specializing in Walnut, oak and ash. Guaranteed bids, will pile brush, top prices paid. Don't sell too cheap! Honest, Reputable, 3rd generation logger. Call today for free estimate. 417-439-7954.

## GOT JUNK? LLC

Paying cash for junk cars. Range \$200-\$500 for complete cars. Free pick-up. Scrap yard with truck scale. 3 miles south of Noel, MO. Opened Tues-Sat. 417-456-2141

## BE AN EARLY BIRD!

Place your ads before Monday and beat the rush!

## WANT TO BUY: Chicken litter in the house. Call 417-235-9712.

## Want to BUY Junk cars and trucks! Paying top dollar! You Call- We Haul! 417-626-2277.

Please print classified ads on The Big NICKEL website. Our web address is www.bignickel.com



## EQUIPMENT UNLIMITED, INC

TRUCKS & SALES  
WE BUY AND SELL:  
Dozers; backhoes; skid-steers; dump trucks; bucket trucks; semis; trailers of all sizes; forklifts; various quick attachments.  
Call Robert 918-801-3269.

NEED TO SELL YOUR HOUSE OR PROPERTY? Get the best coverage around. Call the Big Nickel and our helpful representatives will assist you in creating your ad. You can even pay over the phone. Call 417-624-4100.

**THE SALE YOU'VE BEEN WAITING FOR!!**  
*End Of The Season Blowout!!*

**20% OFF LIST PRICE**  
ON ALL GRAVELY IN-STOCK MODELS!  
(sale price good thru October 31st, 2022)  
FINANCING AVAILABLE, SEE DEALER FOR DETAILS

**GATEWAY FARM EQUIPMENT**  
9723 GATEWAY DRIVE • NEOSHO, MO  
417-451-0821 • www.gfeneosho.com

**GRAVELY**

## Celebrating 31 Years In Business

Kitchens - Now Offering  
Quartz & Granite



- Granite - Choose from 15 Colors
- Quartz - Check website for available colors



www.neoshomable.com

SHOWROOM LOCATION

18414 Highway 59, Neosho, MO 64850 | 417-455-0470 | M-F 8:30 - 4:30

665386ch

665397jn

The Big Nickel is published every Thursday.  
© Phillips Media Group 2021. All Rights Reserved

**BIG NICKEL**  
2918 E. 20th • P.O. Box 1567 • Joplin, MO 64802  
417-624-4100 • Fax: 417-621-0287  
EMAIL: [classified@bignickel.com](mailto:classified@bignickel.com)  
[www.bignickel.com](http://www.bignickel.com)

The publisher reserves the right to edit, classify, or reject any advertising copy. The Big Nickel assumes no financial responsibility for typographical errors in advertising or for omission on any advertisement further than the amount received for payment of such advertising in which the error occurred. Advertisers should check their advertising for accuracy when ad appears. The Big Nickel is not responsible for errors after the first insertion. One copy FREE per reader. Additional copies available only upon request. Payment by check authorizes The Big Nickel to electronically collect returned checks, plus \$25 service charge. Stopped or cancelled classified ads will receive an in house credit, good for 12 mos. No Cash/Credit Card Refunds! Copyright 2020. All rights reserved.

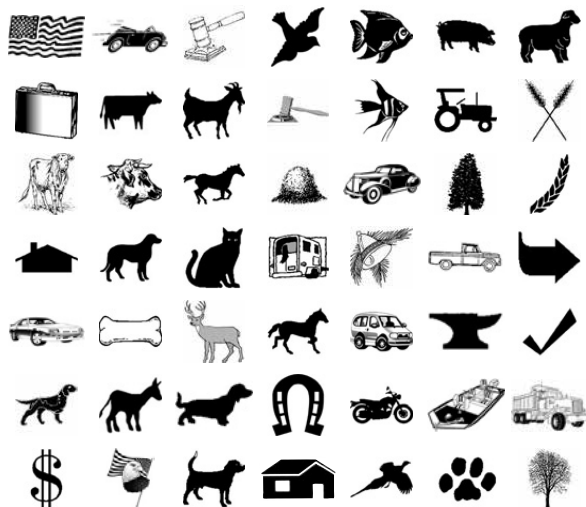
## Big Nickel Classified Options

To place a classified Call 417-624-4100,  
e-mail [classified@bignickel.com](mailto:classified@bignickel.com)

When you place a classified with the Big Nickel you have many options to enhance your classified and make it stand out above the others. Here are a few of the options available:

- Boxed \$2.00 • Bold & Capitalize [First 5 Words] \$2.00
- Graphic Options \$5.00 ea. • Super Graphic \$5.00
- Include Email address \$2.00 • Add a Picture \$5.00
- Include URL \$2.00 • 100% Reverse [Boxed/Boldcaps] \$5.00

### Some of our Available Graphics



## Available Classifications

### A Section

#### MERCHANDISE

Miscellaneous MERCH  
Free  
Appliances  
Arts & Crafts  
Bargain Column  
Building Supplies  
Clothing  
Computers/Accessories  
Electronics  
Furniture  
Hobbies  
Jewelry  
Musical Instruments  
Office Equipment  
Pawn & Thrift  
Sports Equipment  
Wanted-Merchandise  
Pets & Supplies  
Lawn & Garden  
Antiques & Collectibles  
Flea Markets  
Wood & Accessories

#### ANNOUNCEMENTS

Community Events  
Thank You  
Card of Thanks  
In Memoriam  
Lost & Found  
New Businesses  
No Hunting or Tres-

#### passing

Notices  
Personals

#### SERVICES

Accounting-Services  
Air Conditioning/Heating  
Alterations & Sewing  
Appliance Repair  
Auto Repair  
Backhoe/Bulldozer  
Bush Hogging  
Chat/Diri/Gravel  
Child/Elderly Care-Ser-  
vices  
Cleaning  
Computer  
Construction-Services  
Educational/Instruction  
Electrical/Plumbing-Ser-  
vices  
Funeral Needs  
Hauling / Moving  
Health/Beauty/Fitness  
Home Services  
Health Care  
Internet & Web Sites  
Lawn/Garden/Landscape  
Legal Services  
Livestock-Services  
Miscellaneous Services  
Music  
Painting  
Photography

#### Power Washing

Remodeling  
Roofing  
Signs & Lettering  
Storage Units  
Stump Root Removal  
Taxidermy  
Transportation-Services  
Tree Service  
Welding

#### EMPLOYMENT

Help Wanted  
Accounting-EMP  
Agriculture  
Cashier  
Cleaning/Janitor  
Clerical  
Child/Elderly Care-EMP  
Computer Tech  
Construction-EMP  
Education  
Electrical/Plumbing-EMP  
Hotels/Restaurants  
Industry  
Work Wanted  
Maintenance  
Management  
Mechanic  
Medical/Dental  
Miscellaneous EMP  
Opportunities/Training  
Professional  
Retail

#### Sales

Seasonal  
Transportation/Driv-  
ers-EMP  
Welders  
Employment Online Only  
**FINANCIAL**  
Business Opportunities  
Insurance & Savings  
Investments  
Loans  
Services

#### REAL ESTATE

#### SALES

Homes For Sale  
Mobile Homes For Sale  
Acreages & Lots-Sales  
Recreational For Sale  
Business Property  
Condos/Townhouses-Sales  
Foreclosures  
Homes For Sale By Owner  
Investment Property  
Other-RE Sales  
Wanted For Sale

#### REAL ESTATE

#### RENTALS

Acreages & Lots-Rental  
Apartments  
Condos/Townhou-  
ses-Rental  
Duplexes

#### Homes For Rent

Mobile Homes For Rent  
Office/Commercial  
Rentals  
Other-RE Rental  
Recreational For Rent  
Roommates Wanted  
Wanted Rentals

#### RECREATION

Accessories-Recreation  
ATV's  
Boats & Motors  
Campers & Trailers  
Motorcycles  
Other-Recreation  
Parts & Services-Re-  
creation  
Wanted-Recreation

#### TRANSPORTATION

Automobiles  
Trucks, 4x4's, SUV'S  
Accessories-Transpor-  
tation  
Aircraft  
Antiques & Classics  
Commercial Vehicles  
Heavy Equipment  
Parts & Services-Trans-  
portatio  
Vans & Buses  
Wanted-Transportation

## A Section Index

**MERCHANDISE**.....Page 02  
Miscellaneous MERCH.....Page 02  
Furniture.....Page 04  
Pets & Supplies.....Page 04  
Lawn & Garden.....Page 06  
Flea Markets.....Page 03  
Wood & Accessories.....Page 06  
**SERVICES**.....Page 05  
Construction-Services.....Page 06  
Educational/Instruction.....Page 06  
Miscellaneous Services.....Page 05  
Tree Service.....Page 06  
**EMPLOYMENT**.....Page 07  
Medical/Dental.....Page 07  
Transportation/  
Drivers-EMP.....Page 07  
Welders.....Page 07  
**REAL ESTATE SALES**...Page 07  
Homes For Sale.....Page 07  
Mobile Homes For Sale.....Page 09  
Acreages & Lots-Sales.....Page 07  
Business Property.....Page 07  
Homes For Sale  
By Owner.....Page 07  
Investment Property.....Page 09  
Other-RE Sales.....Page 09  
**REAL ESTATE**  
**RENTALS**.....Page 09  
Roommates Wanted.....Page 09  
**RECREATION**.....Page 11  
ATV's.....Page 11  
Campers & Trailers.....Page 11  
Motorcycles.....Page 11  
**TRANSPORTATION**....Page 11  
Automobiles.....Page 11  
Trucks, 4x4's, SUV'S.....Page 11  
Antiques & Classics.....Page 11  
Heavy Equipment.....Page 11

### MERCHANDISE

#### MISCELLANEOUS

## WANTED

BUYING SEASONED fire-  
wood in large amounts.  
417-846-3325,  
479-721-4119,  
417-312-7808.

## WANTED

CASH PAID for unwanted  
R-12 Freon. Tim  
918-260-0020.

DIVAN with recliners at  
both ends, excellent condi-  
tion, beige, \$400; smoker,  
\$75; tires; pellet stove \$700  
firm. 918-533-7534.

I MOW lawns, pick Wal-  
nuts, odd jobs, move  
furniture. Deliveries with  
small truck.  
417-388-8506.

## ATTENTION!

**JODYJO'S FLEA MARKET,**  
1708 S. Main, Joplin, MO.  
10am-5:30pm Wed-Sun.  
Everything in store 1/2  
price excluding plants.

## WANTED

NEED A Handyman,  
part-time as needed,  
Noel, MO. 417-475-6350.

NICE WIDE seat wheel-  
chair, \$100; complete set  
of drums with (3) cymbals,  
\$250; small fish tank with  
stand, \$15; (2) large table  
lamps, \$30 each; nice  
framed Wolf pictures, \$10  
each. 417-456-9360.

YOUNG LIMFLEX BULLS.  
Black and polled, \$950;  
Bred cows and pairs, \$1200  
to \$1800. 417-775-2419.

## FAIRVIEW DISCOUNT

Groceries and More



Mon, Tue, Wed, Fri..... 8AM -5PM  
Saturday..... 9AM-3PM  
Closed Thursday & Sunday

Amos Yoder

31536 Palm Rd.  
417-632-0901

## GOT OLD BATTERIES LYING AROUND? TURN THEM INTO CASH!

Lead acid vehicle batteries

CALL FOR PRICING!

**CASH FOR BATTERIES**



Rogers, AR • 479-631-2346  
Joplin, MO • 417-624-2421  
Golden, MO • 417-271-3801  
Springfield, MO • 417-889-5245

**Battery Outfitters**  
YOUR NEIGHBORHOOD BATTERY STORE



# Lifetime Warranty

417-825-5551  
[www.windowsforlessmo.com](http://www.windowsforlessmo.com)

BOOK NOW FOR WINTER! • NEW LOWER PRICES! • BOOK NOW FOR WINTER! • NEW LOWER PRICES!

## GARAGES & MORE

Licensed • Bonded • Insured  
Servicing Missouri, Oklahoma, & Kansas



**30x40x10**

- (2) 10x9 Overhead Doors
- (1) Entry Door
- 4" Reinforced Concrete Floor

Only \$29,392\*

\*Travel and taxes may apply  
Price subject to change due to rising materials cost.

**30x50x10**

- (2) 10x9 Overhead Doors
- (1) Entry Door
- 4" Reinforced Concrete Floor

Only \$33,500\*

\*Travel and taxes may apply  
Price subject to change due to rising materials cost.



- 29-gauge metal
- Engineered Trusses
- 40-year paint
- Treated square posts
- 22 colors
- Reinforced concrete floor
- Double-Bubble Insulation Available

[www.garagesandmoreonline.com](http://www.garagesandmoreonline.com)

Windows & doors can be added to these Packages.  
We no longer build in ARKANSAS



**Jonathan**  
417-455-4633

**Marcus**  
417-455-3412

BOOK NOW FOR WINTER! • NEW LOWER PRICES! • BOOK NOW FOR WINTER! • NEW LOWER PRICES!

# Antique & Flea Market Directory

**1 THE HITCH N' POST**  
www.thehitch-n-post.com  
David L. Mason  
Owner  
401 Commerce Ave.  
Commerce, OK  
918-675-4519  
Over 400 Booths & Show Cases  
Hours:  
Monday-Saturday 10am - 5:30pm  
Gone To Church on Sundays  
76,000 sq. ft. • Largest on Route 66

**2 OPEN 7 DAYS A WEEK**  
**Cimarron Antique Mall**  
I44/Exit 29 • Sarcoxie, MO  
What do you need?  
We've got it!  
9am - 5pm Daily  
417-548-3023

**3 Pitiful to Posh**  
110 W. Broadway, Monett, MO  
Tues • Sat 10-5, Sun 1-5  
417-236-5664  
Boutique, Antiques, Collectibles,  
Repurposed Vintage Furniture

**4 FINICKY FOX**  
ANTIQUES AND UPSCALE FLEA  
Mon-Sat 10am-6pm, Sun. 12-5pm  
417-392-0482  
534 W Fir Rd, Carthage, MO 64836  
finickyfox.net • find us on f

**5 Saviors of Rust Flea Market**  
Spaces Starting at \$20 a month  
Open Tuesday-Saturday, 10am-6pm  
Hwy 59/421 Maple, Chetopa KS  
620-432-1770  
Like us on Facebook

**6 JODYJO'S FLEA MARKET**  
1708 S. MAIN  
Joplin, MO 64804  
Wed-Sun 10am-5:30pm  
417-438-4533

**7 PARADISE MALL**  
Largest in SE Kansas  
FURNITURE-ANTIQUES & MORE!  
OPEN 7 DAYS!  
105 S. BROADWAY  
Pittsburg, KS  
620-232-6956

**8 Somewhere in Time ANTIQUE MALL**  
719 W. Walnut • Rogers, AR  
\* Located in the old Shelby Lane Mall \*  
479-636-0474  
Open: Mon.-Wed. 10-5 • Thurs.-Sat. 10-4 • Sun. 12-5  
someswhereintime.anti@att.net

**9 Rusty Gate Flea Market**  
417-342-9315  
484 MO-76  
Cassville, MO

**10 PAST TIME**  
Antiques • Collectibles  
& Fleamarket  
4030 Parkview • Frontenac, KS 66763  
www.pasttimeantiques.com

**LIMITED SPACE AVAILABLE!**

Hurry! Call today to get your spot and start reaching more customers in the 4-State Area!

**Your Ad Could be HERE!**  
**Call Billie @ 417-624-4100**

# BUDGET BOX

MOBILE STORAGE

417-782-7788

## Storage Container Sales & Modifications



Dry, Secure, & Rodent Tight!!

5745 Hwy 43, Joplin, MO  
(1 1/4 mi south of Petro on Hwy 43)



### PETS & SUPPLIES

GOLDDOODLE and LAB-RADOODLE PUPPIES, redish color, various ages, shots utd. Price negotiable. 417-884-5206 or 417-684-3356.



LONG HAIR Chihuahuas, males, 20 weeks, had shots and wormed, white with black or tannish gray spots, \$175 each; ALSO Yellow Headed Amazon parrot, \$200. 620-429-5253.



**MALE MANX KITTENS;** Beagleier, male and females; Anatolian Shepherds, males and females; pair of Red Tic Beagles, proven breeder; all vaccinations and wormed for age; Blue Heeler male puppy; Jack Russell puppies, will be small. 417-880-0227. Call for pics.



MULTI-TZU MALE, black and white with Oreo Teddy Bear face! 9 weeks, 2-1/2 lbs., all shots, ready now! \$600. Call Dennis 417-839-7205 or 417-652-3425.



MINI DACHSHUND PUPS, ACA and AKC registered. CUTE!! Lots of color. Vet checked. Health guarantee. Super social. 417-838-2212.



PUG PUPPIES, (2) males, (1) female, registered, black, shots, vet checked, \$300. 417-389-3033.



RED HEELER Puppies, (1) male, (1) female, 11 weeks old, shots and wormed, \$100 each. 417-214-0427.



REGISTERED COTON de Tulear, 10 weeks old, all shots, asking \$600, will trade for equal value. 479-721-1034.

ROARING RIVER Redbone puppies available now. Top bloodlines, occasionally started/finished dogs. Contact Scott 417-592-2536.

**BE AN EARLY BIRD!** Place your ads before Monday and beat the rush!

## RANCH TIME ACCESSORIES

LOOK GREAT FOR LESS...

- ★ CUSTOM HATS
- ★ HAND MADE BOOTS
- ★ WILD RAGS
- ★ WESTERN DECOR
- ★ COWHIDES & GIFTS
- ★ PURSES & WALLETS

BATTLEFIELD MALL Open Mall Hours NORTH PARK MALL  
SPRINGFIELD, MO 417-635-7777 JOPLIN, MO

### MISCELLANEOUS

**SOUTHWEST CONTRACTORS**  
YOUR LOCAL metal roofing contractor. Various colors available. Free estimates. General construction. 417-434-3266.

**WELDER-FABRICATION and POWDER COATER** needed. Job in Neosho, MO. Call 417-592-0251.

**WESTSIDE MINI STORAGE**  
1717 Roosevelt, Joplin, MO  
will be selling the following units after October 27th, 2022. #4.

CALL ABOUT our classified ad specials. 417-624-4100.

### FURNITURE



**60'S FURNITURE:**  
(2) end tables, Mahogany with leather tops, (1) coffee table and (1) end table with leather tops, Rose Channel back arm chair, Mahogany hutch, \$700. Call Showplace Collectables. 417-739-1424.

BRAND NEW Home Stretch lift chair, used 1 week. Paid \$1299.99, asking \$1000. 620-231-3878.

### Pets & Supplies

**AIREDALE PUPPIES**, ready to go, tails docked, UTD on shots and wormed. 417-455-3455.

**AKC BLACK LAB PUPPIES.** Champion bloodlines. Good disease free genes. Dew claws removed, UTD on shots, \$150. 417-356-0258.

**AKC STANDARD POODLE PUPPIES**, black, Apricot and cream parti. Big parents. Tails, dewclaws, shots, \$600-\$900. 417-437-3094.

**NEED TO SELL YOUR HOUSE OR PROPERTY?** Get the best coverage around. Call the Big Nickel and our helpful representatives will assist you in creating your ad. You can even pay over the phone. Call 417-624-4100.

### PETS & SUPPLIES



ACA BOSTON Terriers, males, UTD on shots and worming, \$550. Call or text 918-557-8924.



**AKC EUROPEAN DOBERMAN PUPPIES**, red and rust, males and females available. Ready 11-9-22. 918-407-3599.



**AKC GERMAN SHORT-HAIR Pointer pups**, shots/wormed, papers ready. Will meet to show, ONLY \$300! 620-515-3243.



**AKC RHODESIAN Ridgeback**, (AKA African Lion Hound), shots, wormed, ready to go Oct 19th, \$1000. 919-440-5207, 417-359-6493.

CALL ABOUT our classified ad specials. 417-624-4100.

### WWW.BIGNICKEL.COM

### PETS & SUPPLIES



APRI REGISTERED Mini Dachshund puppies, (1) male Silver Dapple, (1) female red dapple, 7 weeks. Call for information 417-312-1256.



AT STUD: "Indigo" Grand Champion CGC. Call Beth at Sugar Creek Kennels 706-248-7932 in Bella Vista Arkansas for more information.

**BERNESE MOUNTAIN dog pups**, 5 months old, AKC registered, UTD on shots, \$500 each. 417-844-2516.

**BORDER COLLIE puppies**, males, 1st shots, vaccinations/wormed, APRI registered, \$100 with papers, \$80 without. 620-778-8685.

**ENGLISH BULLDOG PUPPIES**, with or without papers. 918-314-3814.



**FREE AKC GOLDEN RETRIEVER PUPPIES** to good homes only. UTD shots/worming. 918-541-6142.

**FREE CATS** and some kittens, some neutered/spayed. 417-291-9800.



**FRENCHIE PUPS**, AKC, beautiful Meryl, Blue, Lilac and Fawn. Vet checked.

Health guarantee. mybluegrassbabies.com or call 417-838-2212 Springfield, Missouri. Delivery available.

### MISCELLANEOUS



midweststormshelters.net. 0% Financing available to 12 months. ATSA CERTIFIED storm shelters. 10 year warranty. Picked up Concrete units starting at \$3100 Packages with installation starting at \$4250. Includes taxes and digging. Steel Safe Rooms starting at \$3755 + tax installed. Serving the entire 4-State area and beyond for 18 years. See us at 12423 Hwy. 59, Neosho MO 417-781-9718

## ATTENTION!

**NEW BEGINNINGS CONSIGNMENT THRIFT STORE**  
1111 E. 12th Street, Lamar, MO. 417-448-4103

We have a large variety of items including: Vintage, Collectibles, Books, Clothing of all Sizes, Furniture, Home Decor, and More. We are adding new items daily making your every visit a new experience! Mention this ad receive 20% discount (some restrictions apply).

QUANTUM ELECTRIC wheel chair; Pride electric chair; lift gits van; fancy wood trim for house; (1) wheel chair. 417-779-0298.

Advertise your Flea Market or Antique Store in the Antique & Flea Market Directory. Call Billie for more information and special pricing. 417-624-4100.

**PRAYER TO Holy Spirit**  
Holy Spirit, you who makes us see everything and shows us the way to reach our ideal. You who gives us the divine gift to forgive and forget the wrong that is done to us and who is in all instances of our lives with us. We, in this short dialogue, want to thank you for everything and confirm once more that we never want to be separated from you no matter how great the material desires may be. We want to be with you and our loved ones in your perpetual glory. Amen. Pray this for 3 consecutive days without stating one's wish. After third day, your wish will be granted no matter how difficult it may be. Promise to publish this as soon as your favor is granted.



**ROCKY-MART, LLC**  
Your local General Store. Prices range from \$1 on up.

21841 E. Hwy. 76. Rocky Comfort, MO. Call 417-652-3538 or 417-847-7518

**RUSTIC CIRCLE CUT wood flooring, tongue & groove, 3"-6" wide, mixed oak.**

Chapman Sawmill 417-438-5507.

WWW.BIGNICKEL.COM

Want another chance with potential customers who have visited your website and left without taking action?

We can do that!

Site Retargeting from The Big Nickel.



CONTACT A Sales Representative at 417-624-4100 TODAY to get started!



# SERVICE DIRECTORY

To Advertise your service or business in this special section

Call Grace: 417-624-4100

\$40<sup>00</sup>  
A Month

## ASPHALT SEAL COATING

**SIMON'S ASPHALT, MAINTENANCE & SEALING**  
Seal coating, hot rubber crack filling, asphalt & Paving, **CHIP & SEAL**. Free Estimates, 7 days a week availability on jobs. Serving the 4-State area.

417-291-0727 or 417-434-8881.

**ASPHALT PAVERS and Chip and Seal.**  
Free estimates on drive-ways, private roads and parking lots.  
1-800-614-6895.

## BATHTUB REFINISHING

### REPAIR OR REFINISH

Fiberglass or porcelain bathtubs. For a free estimate call Rick at 417-626-7882  
rwprotub@gmail.com

## CONCRETE

### 4-STATES CONCRETE

Concrete flatwork includes shop floors, driveways, patios, decorative, in-floor heat.  
**LEROY YODER**  
620-762-0132 or 620-238-7180.

## CONSTRUCTION & HOME IMP.

**GRUMPY GRANDPA  
HANDY MAN SERVICE**  
Insured and Bonded.  
417-793-4078

**PROFESSIONAL FLOOR LEVELING,  
AND JOIST REPLACEMENT.**  
Licensed, Bonded, Insured.  
417-439-5717 • 417-438-0864

**D&M CONSTRUCTION & REMODELING, LLC.**  
Specializing in doors, windows, install windows any size for \$150, & siding, all types of carpentry.  
Metal roofing. Senior Discounts.  
Licensed, Bonded & Insured.  
Dave McElhanev  
417-483-4113

**PROFESSIONAL REMODELING & BUILDING.**  
Garages, Shops, Room Additions, Bathroom Add-Ons.  
Prices to fit your pocketbook!  
Licensed, Bonded, Insured.  
417-439-5717 • 417-438-0864

**HANDYMAN IVAN JOSIP**  
Handyman Services Joplin And Surrounding Areas. From "To Do" list to "Job Done" with just one call! 417-396-4689.

**HANDY MAN SERVICES**  
Over 30 years experience.  
Licensed & Insured  
479-200-2038  
carcinbr22@yahoo.com

## DRYWALL REPAIR

### CRAIG'S DRYWALL REPAIR

Do you have cracks in your ceilings or walls?  
• Can Repair • Popcorn removal • Retexturing  
• Loose tape joints • Ceiling stains • Mold removal.  
Same day, same service. Insured, Free Estimates.  
5 Star Rating. M-F 7am-5pm, Sat. 8am-Noon  
Serving the Joplin/Springfield area for over 40 years.  
417-430-9544

## ESTATE SALES

### JUST GET ORGANIZED! SERVICES WE OFFER!

\*Organize, set-up, and hold sales. \*Downsizing  
\*Moving \*Estate (Residential & Commercial) homes and small and medium farms.  
\*Clean up property. \*Haul off unwanted items.  
\*Help prepare home/property for sale.  
\*Advise on staging home for sale. \*Pack for moves.  
\*Buying gold and silver (jewelry, flatware, coins)  
Serving the area for 15 years.  
Large following of buyers to our sales.  
**Just Get Organized! Free Estimates.**  
Suzanne 417-825-7003

## EXCAVATING

**DUMP TRUCK** Services, black dirt, creek rock, Skid steer work, Land clearing, Bush Hogging, Pads & Driveways.  
Donnie 417-291-8916.

### TICE EXCAVATION LLC

Prep for water/sewer lines,  
Land prep for buildings, roads,  
Land Clearing, Brush Removal, Ponds  
Seneca, MO  
417-592-4636 • Tim Tice- owner

### MARK LOTT'S EXCAVATING

All types of dirt work services. Land Clearing, Pond clean out, foundations, pads, driveways, roads, demolition, sit preparation. Dump Truck, Skidsteer, Excavator, tractor services available.  
703-625-4545 or 417-434-0585.

## HAULING

### HAUL AWAY SERVICES

Junk; Rubbish; Furniture; Appliances; Debris; Garage/Yard items.  
**JUST GET ORGANIZED!**  
417-825-7003  
Serving 4 State Area for 15 years.

### HAULING

Black dirt, garden compost, fill dirt, mulch, Driveway limestone, river rock, asphalt, skid steer work. Weekend delivery available.  
417-291-0727

## LAWN & GARDEN

### FIRE PITS, OUTDOOR KITCHENS & PATIOS, AERATION, HYDRO-SEEDING & SODDING.

Irrigation, installation, & repair.  
Retaining walls, sandstone patios & flowerbeds.  
Full service lawn, landscape and lawn care.  
Free Estimates. Licensed, Bonded & Insured.  
**R&D LAWN CARE & LANDSCAPING**  
417-438-6590

### T&M LAWCARE

Lawncare, Landscaping & Stump Removal  
Cleanups and more! Free Estimates  
Insured & Licensed  
Owner: Tim 620-202-0005

## MASONRY

**J&J Masonry & Services, LLC**  
Brick, Block, Stone, Cultured Stone.  
New and restoration. Insured.  
Josh 620-644-8695 • John 417-321-2176  
Office 417-927-3349

## MOVING SERVICES

Expert Furniture Moving 3 Men & 26' Truck  
Hourly or Flat Rate w/Quote.  
Professional, Licensed & Insured.

**SCOUT PRODUCTS LLC**  
417-673-7777

## ORGANIZING

### TOO MUCH STUFF?

We Buy Most Anything. Estates/full or partial.  
Appliances; furniture; patio; outdoor items; tools; jewelry, gold, silver items;  
(We also do Estate Sales).  
**JUST GET ORGANIZED**  
417-825-7003 Suzanne

## PACKING & CRATING

Professional Packing & Crating  
Over 30 years experience.  
Licensed & Insured  
479-200-2038  
carcinbr22@yahoo.com

## ROOFING

### RESIDENTIAL & COMMERCIAL METAL ROOFING & REROOFING.

Regular rib or standing seam. (Hidden fasteners).  
40 year warranty. (22) colors. Satisfaction guaranteed! Servicing the 4-State Area! Free Estimates!  
**YODER CUSTOM CONSTRUCTION, LLC.**  
417-388-0613

### MONTY'S ROOFING & CONSTRUCTION

Residential: •Roofing •Siding •Gutters  
•Storm Damage •Construction  
Commercial: •Roofing •Metal •Flat  
•Bituman Coatings. Over 30 years experience,  
Workers' Compensation  
30 Year Leak/Labor Warranty  
Free Estimates, Insurance Claims,  
Special Discounts  
Licensed, Bonded, Insured  
www.montysroofing.com  
417-438-0895

## STUMP REMOVAL

**TREE STUMP** removal, fast, efficient, affordable.  
Free estimate. 417-623-5510,  
**TERRY VREELAND**

## TREE SERVICE

### PACIFIC TREE SERVICE

Owner: David Bratt  
417-622-7963  
\*Licensed \*Bonded \* Insured  
All Bids are Completely Free  
Tree Trimming & Removal. Brush Cleanup.  
All jobs big and small. We can handle them all!

**PLACE YOUR AD TODAY!**  
**SPACE IS LIMITED AND GOING FAST! DON'T MISS OUT!**  
**Call Grace: 417-624-4100**



**LAWN & GARDEN**

**GET READY FOR MOWING**

Bring Your Mower In Now For Service:

**\$100 MID-MOUNT**  
(plus parts)

**0% Financing**  
Available on ALL NEW MODELS  
(with approved credit)



**\$125 FRONT-MOUNT**  
(plus parts)



**NewCo Service**  
11989 Homer Lane  
Neosho, MO  
417-451-2660

649740cb

**EDUCATIONAL/INSTRUCTION**

**JACK TRUMAN**

Democratic Candidate for the 4th Congressional District

*Even though I am not related to President Truman,  
I agree with what he said, "The Buck Stops Here"*

*So Give Me Your Vote, Not Your Buck*

Thank You  
Advertisement paid for by candidate

**CONSTRUCTION-SERVICES**

**SOUTHWEST CONTRACTORS**  
YOUR LOCAL metal roofing contractor. Various colors available. Free estimates. General construction.  
417-434-3266.

**TREE SERVICE**

**BUYING STANDING Timber.**  
Top prices paid. Full residential service available.  
Call Josh St. Clair.  
417-626-2120.

**CLINT RENNER LOGGING**  
Specializing in Walnut, oak and ash. Guaranteed bids, will pile brush, top prices paid. Don't sell too cheap! Honest, Reputable, 3rd generation logger. Call today for free estimate. **417-439-7954.**

**WANTED**  
WANTING TO BUY standing timber (3) acres or more. All types of wood. Call Steve 479-903-4454 or Good Wood, Inc. 479-636-7171.

**WANTED**  
WANTING TO BUY standing timber (3) acres or more. All types of wood. Call Steve 479-903-4454 or Good Wood, Inc. 479-636-7171.

[WWW.BIGNICKEL.COM](http://WWW.BIGNICKEL.COM)

**MISCELLANEOUS**

**ATTENTION!**

**Buying all VEHICLES, TRACTORS, Farm Equipment, Classic Cars and Trucks.** Everything on property. "Call me before you sell!"  
417-830-4685.



**POULTRY HOUSE REMOVAL**  
We buy good quality chicken and turkey houses. Remove the houses and all deconstruction debris. Local professional crews. Serving since 1992.  
**Cedar Creek Contractors, LLC 785-217-3379.**

**CASH BUYING**

**COINS, GOLD, SILVER, JEWELRY, DIAMONDS, SAFES, OAK ANTIQUES, BRASS MICROSCOPES, MOBILITY SCOOTERS, ELECTRIC WHEELCHAIRS, ARROWHEADS, ANVILS, GUN COLLECTION, AMMO**  
417-437-5317 DR. HAMLIN

PAYING TOP Dollar for junk autos, small \$100/up, large up to \$300. No titles OK.  
417-437-0605.

PLEASE PLACE your classified ads on The Big NICKEL website. Our web address is [www.bignickel.com](http://www.bignickel.com)

**D&D LOGGING**

**BUYING ALL TYPES OF STANDING TIMBER**  
Walnut • Oak  
Ash • Etc.  
Anthony Gruver  
417-437-9633

**MISCELLANEOUS**

**BAR-M SKIDSTEER SERVICE**  
Pasture Clearing-Tree Cutting, Grapple work, Brush-hogging, Dirt Work, Demolition, Pond Cleaning, etc.  
**918-919-1384.**

**ROLL-OFF CONTAINERS FOR REMODELING, ROOFING, CLEAN UP.** Pittsburg, Joplin and surrounding areas.  
**Freddy Van's, Inc. 620-231-1127.**

CALL ABOUT our classified ad specials. **417-624-4100.**

**WANT TO BUY MILITARY ITEMS**

USA or FOREIGN \* SINGLE PIECES OR COLLECTIONS  
Medals - Helmets - Patches  
Uniforms - Knives - Bayonets  
Buying from WW I - Iraq/Afghanistan

**Military Collectors Services**  
126 N. Webb • Webb City, MO • 417-850-0011  
[marionliles@yahoo.com](mailto:marionliles@yahoo.com)

**HomeTown LENDERS**

WHAT HAS YOUR HOME EQUITY DONE FOR YOU LATELY?  
Seniors, are you 62 or older and have thought about using your home equity to: Get rid of the mortgage payment.... Payoff debt.... Take a trip.... Remodel.... Invest

To discuss a **REVERSE MORTGAGE**, call today.

**CARY WHITE** 417-825-7398  
NMLS # 282892  
[cary.white@htlenders.com](mailto:cary.white@htlenders.com)  
407 Pennsylvania Ste 206, Joplin, Mo 64801

ADVERTISING (1-417-825-7398) A Division of HomeTown Lenders, Inc., an Equal Housing Lender NMLS# 65084 ([www.nmlsconsumeraccess.org](http://www.nmlsconsumeraccess.org)) Terms, conditions, and restrictions may apply. Loan products are subject to availability and credit approval. Not a commitment to extend credit. HomeTown Lenders USA AZ BK-0949142. Licensed by the Department of Financial Protection & Innovation under the California Residential Mortgage Lending Act 41080-60614.

**PETS & SUPPLIES**

**TOY AUSTRALIAN Shepherds, AFDR registered, (2) red tri boys, (2) red tri girls, born 9-7-22.**  
417-669-7092.

**YORKIES and SHORKIES, party colors, 2lbs. all shots, ready 11-4-22, \$600.** Call Dennis 417-839-7205 or 417-652-3425.

**BUYING ALL types of standing timber.**  
LARGE or SMALL Tracts  
Nick Bradford  
417-451-0820  
417-825-4653

**WOOD & ACCESSORIES**

USED WOOD stove insert, great for a shop or patio area, \$235. Next to Whistling Springs Brewery, Washburn, MO area.  
417-341-8381.

**WANTED**

WANTING TO BUY standing timber (3) acres or more. All types of wood. Call Steve 479-903-4454 or Good Wood, Inc. 479-636-7171.

**WANTED**  
WANTING TO BUY standing timber (3) acres or more. All types of wood. Call Steve 479-903-4454 or Good Wood, Inc. 479-636-7171.

**SERVICES**

**CONSTRUCTION-SERVICES**

**EICHER & SON**  
Will do Add-ons, Remodeling, Decks, Retaining walls. 40 years experience. Call us for your construction needs.  
918-541-5421.

**RUSTIC CIRCLE CUT** wood flooring, tongue & groove, 3"-6" wide, mixed oak.  
Chapman Sawmill  
417-438-5507.

PLEASE PLACE your classified ads on The Big NICKEL website. Our web address is [www.bignickel.com](http://www.bignickel.com)

**H&M CONSTRUCTION**  
Cell: 417-262-2340 • Home: 417-682-4060

**ALL TYPES RESIDENTIAL & COMMERCIAL BUILDINGS**  
Pole Barns • Shop Buildings • Horse Barns  
Cattle Facilities • Shouse Buildings • Garages  
Also Available in Red Iron Structures

**YOU DREAM IT, WE BUILD IT!**

**JOSH HARTNESS LOGGING**  
BUYING MOST SPECIES OF STANDING TIMBER

**620-212-0896**  
MARKETS ARE GOOD ON BURR OAK, ASH & WALNUT  
FREE ESTIMATES • 25 YEARS EXPERIENCE

**CHESHIRE LOGGING**  
BUYING STANDING TIMBER  
• Specializing in Walnut •  
• Top Prices Paid •  
References Available  
**BRENNON CHESHIRE**  
417-540-0421

**HARDWOOD PRATER PRODUCTS**  
EST. 1903  
Sawmill/Logging 918-919-9764  
Buying Standing Timber

**TOP PRICES PAID**  
Veneer • Saw Logs • Table Top Logs  
**Maxwell Helm**  
Walnut Log & Standing Timber Buyer  
417-439-3709

31+ years experience Free Estimates

**The - Shetler's JJ BUILDERS & EXCAVATING**  
Also Buyer of Standing Timber  
Specializing In  
Pole Barns, Houses, Horse Barns, Garages,  
New Roofs: Metal or Shingle. All kinds of Concrete Work  
Water Drainage, Landscaping, Building Sites,  
Driveways & Much More!  
Quality work at a lower price

**John and Caroline Shetler**  
1185 Rt. E, Lockwood, MO  
Call or text 417-205-8780

**MISCELLANEOUS**

**NEW HOPE Church of Carl Junction**  
**Lord's Acre Supper & Auction**  
Sat. Nov. 5, 2022  
Randy Steele, Pastor.  
Located on CR 270 & Kafir or 1 mile east & 1 mile north of Hwy 96 & 71 or 2 miles west & 1 mile north of Junction of 43 & 96.  
**SUPPER-** Serving from 4pm-7pm. The menu features homemade noodles with chicken, ham, vegetables, roll, dessert and beverage.  
To go orders available. Adults: \$10. Children: \$5.  
**AUCTION: 7:30PM**  
Cindy Herr, Auctioneer. Handicrafts, needlework, baked goods.

HAVING A garage sale or rummage sale? Call us for special pricing. 417-624-4100.

**- A New Future -**

The only true future that is in reality of good can only be found in having a personal, living relationship with Jesus Christ. Jesus has become the certain guarantee of a better eternal future beyond this world we live in. He lives on forever and so will anyone who will place their life with His. Jesus is the only one who is able to forgive sin and give a new start to life and offer a heavenly home with God.

Jesus was sent by God to help people so that He could live as we do and live. Above the sins of this life, for which Jesus sacrificed His life for all humanity's sins. So, the question is; will you accept Jesus and what He has done to erase your sins and give you new life? Jesus is the mediator of a better life between you and God, giving you access to God's throne and there Jesus speaks of you with God.

There is no eternal help in any other than Jesus and for all who personally believe in Him and receive His life as their own. You can have full assurance in a better life when you leave this world. Jesus willingly offered His life for your life to pay for the debt of all your sins ever committed and they are all forgiven when you give them to Jesus by accepting Him as your savior, master and Lord. If you do this, it is Christ who has entered into heaven in the presence of God, Himself, to defend you as worthy to be an eternal true child of God, justifying those who will live by faith in Him.



Mark Taylor is the President of Sky High Broadcasting, as well as an author, columnist and speaker. You can contact him at [mtaylor@kneo.org](mailto:mtaylor@kneo.org), or follow him on Twitter @kneo917



**Listen Live at**  
**kneo.org**

417-451-KNEO (5636)  
10827 Hwy 86 East, Neosho, MO 64850

**HOMES FOR SALE**

**JOPLIN-** 2 bedroom, 1 bath frame house with central heat/air; new asphalt roof in 2022. \$3900 down, \$667 per month. Owner finance 800-720-8503.

**JOPLIN-** 3 bedroom, 2 bath frame house with central heat/air, 2 car detached garage. \$4900 down, \$834 per month. Owner finance 800-720-8503.

**LARGE HOME IN ANDERSON!** 4 bedroom, 2 bath frame house with new metal roof in 2022; \$4900 down, \$921 per month. Owner finance 800-720-8503.

**LARGE HOME IN ANDERSON!** 3 bedroom, 2 bath frame house with central heat/air, on large lot with new roof! \$7900 down, \$1554 per month. Owner finance 800-720-8503.

**LISTING-** (36.45) acres Benton County Arkansas near Gentry. Beautiful custom built log home on acreage, \$959,000. Call Tony Chrisco at Whitetail Properties Real Estate LLC 479-866-2622.

**NEW LISTING-** (18.94) acres in Newton Co near Pierce City. Beautiful custom home on acreage, \$425,000. Call Tony Chrisco at Whitetail Properties Real Estate LLC 417-860-0259.

**NEW LISTING:** (11.97) acres, Newton Co near Stark City. Beautiful newly updated home on acreage, \$249,000. Call Tony Chrisco at Whitetail Properties Real Estate LLC 479-866-2622.

**REPAIRED** 3 bedroom, 1-1/2 bath home in Purcell; central gas heat, basement, 1 car detached garage, storage building, \$3900 down, \$834 per month. Owner finance 800-720-8503.

**SENECA-** 3 bedroom, 1-1/2 baths with upgraded electrical wiring. AS IS, \$3900 down, \$667 per month. Owner finance 800-720-8503.

**STELLA,** 3 bedroom, 2-1/2 bath, 1900 sq.ft., (6.2) acres, move in ready, \$299,000! [lc1771@gmail.com](mailto:lc1771@gmail.com)

**WEBB CITY-** 3 bedroom, 2 bath repaired frame house; \$4900 down, \$999 per month. Owner finance 800-720-8503.

**BUSINESS PROPERTY**

**AURORA, MO.** Zone C-1. Full 1/4th city block. Across from Casey's. 2600' building. High traffic count. No agents. 417-678-5700.

**BUSINESS PROPERTY**



**GRAND LAKE PROPERTY FOR SALE**

Located near Grove, Oklahoma on paved road and perfect for Airbnb. Approximately 2-1/2 acres with nearly 550' of lake front on deep water cove. Owner has (2) slip dock, accessible by walking. Currently has (4) rented trailers with plenty of room for more. Large storage building for boat parking. Asking \$655,000. 417-434-5100. Shown by appointment only. No realtors please.

**ACREAGES & LOTS-SALES**

**(22) ACRES or (5) acre tracts, barn, electricity, corral, pond, rural water, fiber optics, (3) lakes within 10 miles, 1/2 mile to Dollar General, Hwy. 82 frontage, rural road behind. Langley, OK area. 918-297-5859 leave message.**

**(32.5) ACRES,** near Ritchey, woods and pasture, corner lot, paved road, \$5500/acre. 417-850-2673 evenings.



**BY OWNER**  
**\*28 acres + canoe resort on Elk River, with RVs and cabins, Noel, MO.**

**\*Only (3) LOTS left, Mountain Ridge, in Pineville, MO. Acre + lots with panoramic views, with utilities and paved roads. Your choice.**

**\*4000+ sq.ft. warehouse, brick with new roof, Noel, MO. On railroad spur and loading dock, high ceiling.**

**\*25 acres + gravel stock pile, Pineville, MO. Limestone rock, all sizes of rock, over million tons.**

**\*21 acres + great for RV, boat storage, BBQ restaurant, Dollar General, ETC. Great income potential. Located on the MO/AR line.**

**\*16+ approximately 6 acres commercial property on new 49/71 Freeway. Lower half could be small farm, has large warehouse, workshop, and doublewide on the creek. Anderson, MO.**

**\*13.3 acre+ with (4) 40x400 buildings in good shape, good well and electric, great views for homesite, great for growing vegetables, raising birds, small herd of cattle, etc. Exeter, MO.**

**\*60 acres, plus great for housing development or farming, Shawnee, OK. Electric, water and paved road to property. Right in the path to grow! May split!**

**Owner may carry with reasonable down payment!!**  
602-999-3899 or 800-333-9110.

**NEW LISTING-** (30) acres in Newton Co near Neosho. Incredible property with endless opportunities, \$499,000. Call Tony Chrisco at Whitetail Properties Real Estate LLC 417-860-0259.

**PENDING-** (13.38) acres Newton County near Granby. Ideal building location in the heart of Southwest Missouri, \$64,229. Call Tony Chrisco at Whitetail Properties Real Estate LLC 417-860-0259.

[WWW.BIGNICKEL.COM](http://WWW.BIGNICKEL.COM)

**HOMES FOR SALE**

**ANDERSON-** (4) acres, 2 bedroom, 2 bath mobile home with central heat/air, new metal roof (2019), new well and septic, pond. **AS IS,** \$3900 down, \$842 per month. Owner finance 800-720-8503.

**CUTE COTTAGE!** 2 bedroom, 1 bath, repaired frame house with central heat/air, \$4900 down, \$790 per month. In Joplin. Owner finance 800-720-8503.

**DON'T MISS THIS ONE IN CARTHAGE!** 5 bedroom, 2 bath frame 2-story historic house with 2246 sq.ft., central heat/air, fireplace, basement, chain-link fence, 1 car attached garage. AS IS \$3900 down, \$755 per month. Owner finance 800-720-8503.

**GOODMAN-** ONE acre with 3 bedroom, 2 bath mobile home, central heat/air, 12'x12' storage building. AS IS, \$1900 down, \$509 per month. Owner finance 800-720-8503.

**GRANBY-** 3 bedroom, 2 bath modular home (1152 sf) with central heat/air; storm cellar, \$4900 down, \$921 per month. Owner finance 800-720-8503.

**BILL BUYS Joplin Houses**  
(64801-64804)  
For FULL Price.  
417-580-0007.

**CARTHAGE-** ONE ACRE with 3 bedroom, 2 bath double-wide mobile, has central heat/air, fireplace. **AS IS,** \$4900 down, \$834 per month. Owner finance 800-720-8503.

**PIERCE CITY-** 1276 SF, 3 bedroom, 1 bath repaired frame house; \$4900 down, \$834 per month. Owner finance 800-720-8503.

**WELDERS**

**WELDER-FABRICATION and POWDER COATER** needed. Job in Neosho, MO. Call 417-592-0251.

**MECHANIC**

**COME JOIN our work family! Hiring trailer mechanics! More experience equals more pay! Apply today! 417-659-9999.**

**REAL ESTATE SALES**

**HOMES FOR SALE**



**29 BLACKROCK,** Kimberling City, MO. 2200 sq.ft. large open floor plan, fireplace, all appliances, good size dining room, some furniture included. 2 bedroom, 2 bath, 2 living spaces, 2nd living could make good size bunk room, 2 car garage with tools, close to town, \$269,000. 417-739-1929 Smith.

CALL ABOUT our classified ad specials. 417-624-4100.

**MISCELLANEOUS**

**STORAGE UNITS, TWO SIZES OPEN, RV/BOAT PARKING ALSO AVAILABLE, IN NEOSHO, MO. (NEAR LOVE'S TRUCK STOP.) FOR PRICES AND SIZES, VISIT [86ministorage.com](http://86ministorage.com) or call 417-621-1601.**

**EMPLOYMENT**

**TRANSPORTATION/DRIVERS**



**DRIVING JOB AVAILABLE.**

We are a small family owned company, based out of Purdy MO, hauling grain and commodities throughout the 4 state area, MO, OK, AR and KS. We travel within a 300 mile radius. Drivers are home every weekend, leaving out Monday morning, returning Friday evening. We also have a few other dedicated freight lanes moving throughout the Midwest. We have later model trucks and trailers that are well maintained. Pay is based off of percentage, safety bonus at the end of year, paid vacation and paid holidays as well. Please call 417-442-3741.

Advertise your specialty in the Big Nickel Service Directory. Runs every week! Call Grace for special pricing and more information. 417-624-4100.

**CEI CERTIFIED EXPRESS, INC. NEOSHO, MO**  
**NOW HIRING SAFE, PROFESSIONAL DRIVERS**  
11817 Kentucky Rd., Neosho, MO  
866-451-6162 EXT. 18  
CEI-HVLL.COM

THINKING ABOUT SELLING YOUR LAND? I CAN HELP.

**TONY CHRISCO**  
Southwest Missouri Land Specialist  
**417.860.0259**  
[tony.chrisco@whitetailproperties.com](mailto:tony.chrisco@whitetailproperties.com)

**WHITETAIL PROPERTIES REAL ESTATE**  
HUNTING | RANCH | FARM | TIMBER  
**WHITETAILPROPERTIES.COM**

# Need Extra Cash?



**Have you cut back on all the extras like going out to dinner or the movies?**

**Generate Some Extra Money For Your Pocket!**

*Now is the Time to Get Rid of Unused Items!*

*Clean Out The Garage!*

Place Your Classified Ad in a 2nd, 3rd or 4th Additional Category for

# 1/2 Price!

*HURRY- Special pricing is for a limited time only!*



**BIG NICKEL CLASSIFIED ORDER CALL 417-624-4100 OR FAX 417-621-0287**

Name \_\_\_\_\_

Address\* \_\_\_\_\_ Phone \_\_\_\_\_

City \_\_\_\_\_ State \_\_\_\_\_ Zip \_\_\_\_\_

if using credit card, must be credit card billing address

Classification \_\_\_\_\_

Amount From Form Below \$ \_\_\_\_\_

Boxed (Add \$2.00) \$ \_\_\_\_\_

Bold & Capitalize First 5 Words (Add \$2.00) \$ \_\_\_\_\_

Graphic Options (circle choice) Add \$5 ea. Option \$ \_\_\_\_\_

Super Graphic (Add \$5.00) \$ \_\_\_\_\_

Include Email address (Add \$2) \$ \_\_\_\_\_

Add a Picture (Add \$5) \$ \_\_\_\_\_

Include URL (Add \$2) \$ \_\_\_\_\_

\* Required on Help Wanted and OTR & Driver Opport. Classifications

**100% Reverse [Boxed/Boldcaps] (Add \$5)**

Subtotal \$ \_\_\_\_\_

# of Weeks Ad is to Run \_\_\_\_\_ x Subtotal= \$ \_\_\_\_\_

**SEE MORE GRAPHIC OPTIONS ON INDEX**

**CLASSIFIED DEADLINES**

<b>AUCTIONS</b> 10am • Mon.	<b>A SECTION</b> 3pm • Mon.
<b>B SECTION</b> 10am • Mon.	<b>VEH SECTION</b> 3pm • Mon.

				<b>UP TO 15 WORDS</b>
				\$13.75 \$11.75
				\$14.75 \$12.75
				\$15.75 \$13.75

Credit Card No.\* \_\_\_\_\_ CC Exp. Date\* \_\_\_\_\_ 3 Digit Verification No.\* \_\_\_\_\_

Payment by check authorizes the Big Nickel to electronically collect returned checks, plus \$25.00 Service Charge.

Clip your ad and send it with payment to:  
**Big Nickel**  
**PO Box 1567**  
**Joplin, MO 64802**  
 Or e-mail us at:  
**classified@bignickel.com**  
 Place your ad online at  
**www.bignickel.com**

\*Required information when paying with credit card

<b>AUCTIONS</b> 10am • Mon.	<b>A SECTION</b> 3pm • Mon.
<b>B SECTION</b> 10am • Mon.	<b>VEH SECTION</b> 3pm • Mon.

BOLD NAME, ADDRESS & PHONE ON COMMERCIAL ADS PRIVATE PARTY

**For other specials or to place your classified** **Put the 4-state area distribution of the Big Nickel to Work for YOU!**  
 Call 417-624-4100      www.bignickel.com  
 Fax: 417-621-0287      Email: classified@bignickel.com



# Town & Country

Real Estate & Auction Service

1700 W. Austin, Nevada • 417-667-2966

- 3 bed 2 bath home on 49 acres Vernon County, .....  
.....**SOLD**.....\$266,000
- 1480 Acres, Vernon County Mo....**SOLD**.....\$7,000,000
- 120 Acres, Row Crop, Vernon County Mo.....  
.....**SOLD**..... \$660,000
- 75 acres M/L, great hunting property east of Nevada  
Mo ..... \$225,000
- 391 acres M/L pasture ground, 6 nice ponds some are  
big and full of fish, Good fences .....\$1,955,000

**WE ARE "SOLD OUT" & NEED LISTINGS! PLEASE CALL,  
IF YOU ARE THINKING OF SELLING! 417-488-9540**



**DOUG WORTMAN** 417-448-9540  
Owner Broker/ Auctioneer  
**JAY WORTMAN** 417-365-4721  
Agent  
**TROY SCOTTEN** 417-448-7183  
Agent  
**TAYLOR SCOTTEN** 417-484-1224  
Agent  
**COLE ABELE** 417-684-8881  
Auctioneer

### ACREAGES & LOTS-SALES

WANT ACRES in the country? (5.7) acres with all utilities, all metal garage/workshop (approx. 24'x34') with concrete floors and small shed with metal roof. Land only- Lamar, \$3400 down, \$583 per month. Owner finance 800-720-8503.

### INVESTMENT PROPERTY

**LISTING-** (140.73) acres Benton County Arkansas near Siloam Springs. Incredible investment potential in NW Arkansas, \$2,490,000. Call **Tony Christo** at **Whitetail Properties Real Estate LLC** 479-866-2622.

### MOBILE HOMES FOR SALE

1 BEDROOM, 1 BATH, Cute small home! Has new carpet. There is a small front porch. Come by and check it out or can be seen on our website. #1. [www.hwy59discounthomes.com](http://www.hwy59discounthomes.com) 417-451-2609.

### MOBILE HOMES FOR SALE

2 BEDROOM, 1 BATH- 2020 OakCreek, 2 bedroom, 1 bath, 14x60. Great starter home or lake house. Financing options available for most all credit scores. Call us today! #5. 417-451-2609.

4 BEDROOM, 2 BATH, 28x56 home has a new roof, new A/C, hot water heater and kitchen appliances. Carpet has been replaced. First 50 miles of delivery and standard set-up included in price. #50. 417-451-2609.

**WE need MOBILE HOMES!**  
**PAYING CASH TODAY!**  
**ALL YEARS, ALL SIZES.**  
**CALL 417-455-0200.**

### REAL ESTATE RENTALS

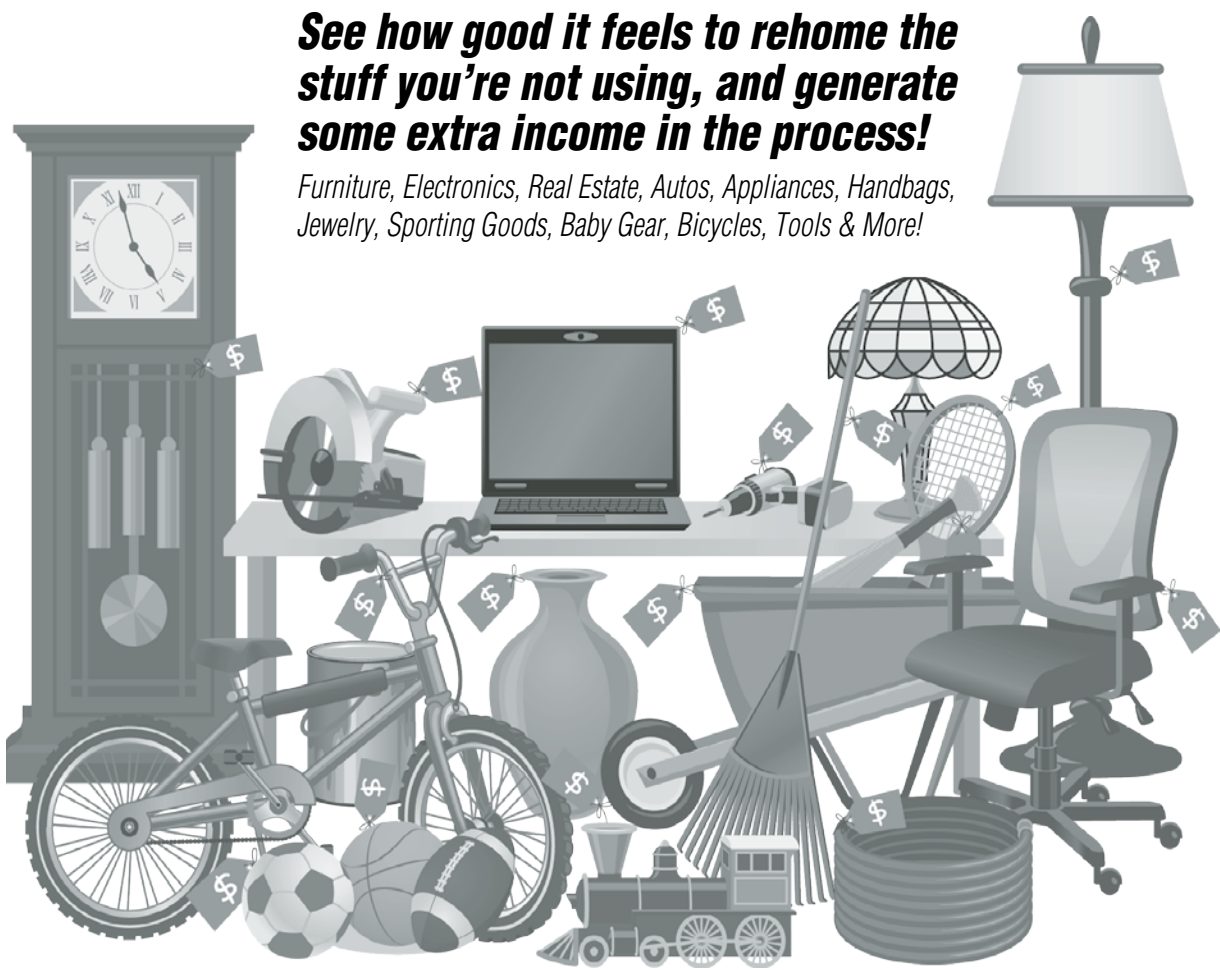
### ROOMMATES WANTED

BEAUTIFUL FURNISHED ROOM in private home. Nice area. References, deposit, photo ID required. 417-952-3194.

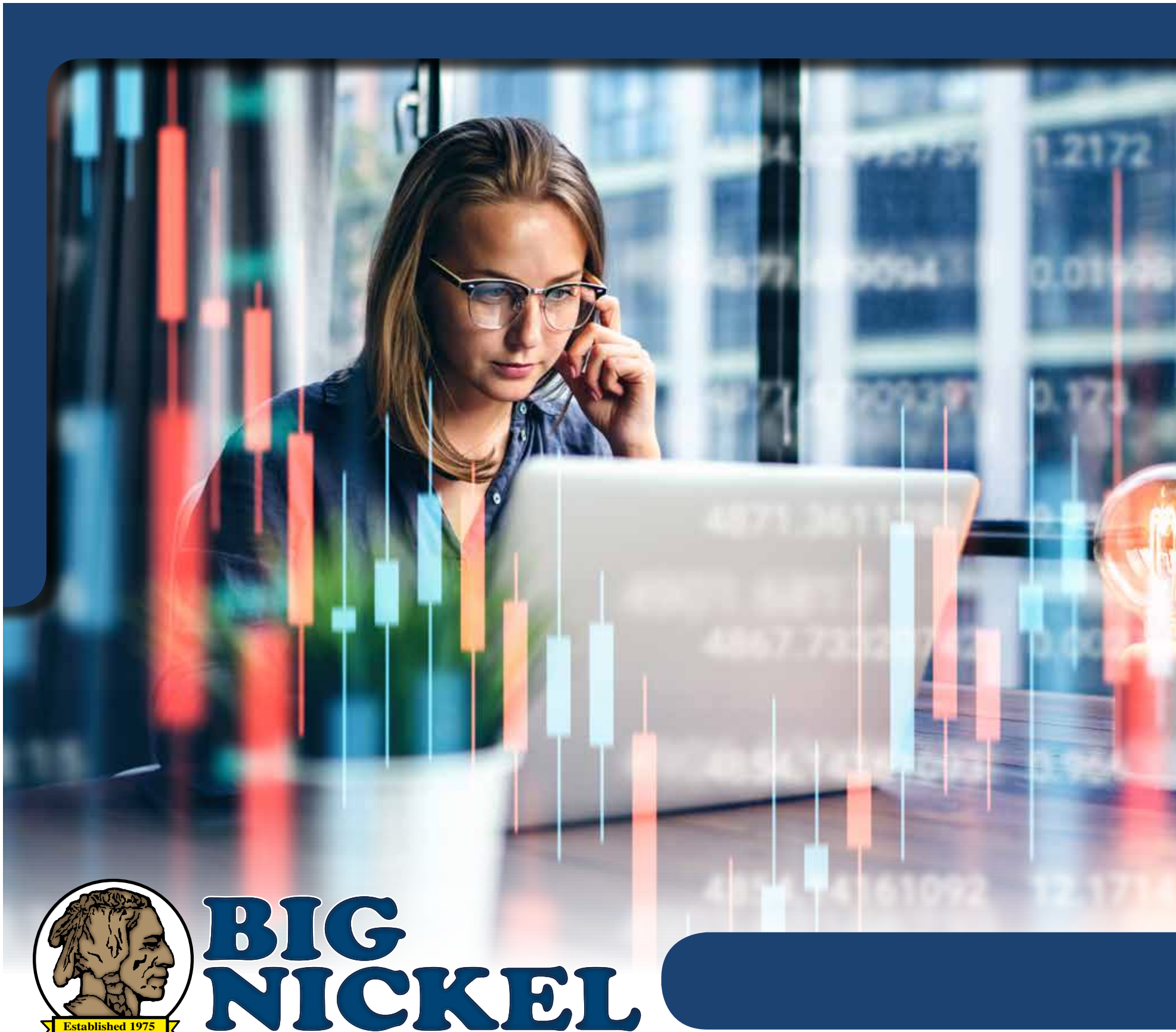
### OTHER-RE SALES

**See how good it feels to rehome the stuff you're not using, and generate some extra income in the process!**

*Furniture, Electronics, Real Estate, Autos, Appliances, Handbags, Jewelry, Sporting Goods, Baby Gear, Bicycles, Tools & More!*



### MOBILE HOMES FOR SALE



# BIG NICKEL

## New and improved Big Nickel website [WWW.BIGNICKEL.COM](http://WWW.BIGNICKEL.COM)

- E-edition
- Interactive Auction page with calendar, directory and auction ads
- Fresh and relevant editorial content
- Direct links to advertisers' websites.
- Marketplace of advertisers with each week's ads, as well as expanded listings with hours, directions and business highlights for featured advertisers.
- All ads organized by category on one page
- Exciting promotions and enter to win contests!
- Business and reader spotlights!
- Location finder for picking up a paper copy of the Big Nickel!
- Self-service classified liner ad purchases

For questions or to place an ad, call:

# 417-624-4100

**RECREATION**

**ATV'S**

2017 KAWASAKI 4010, 4X4 Mule UTV **SOLD** hours, liquid cool, power steering, gas engine, dump bed, \$6000. 6 2 0 - 3 0 5 - X X X X .

**CAMPERS & TRAILERS**

1974 AIRSTREAM Travel Trailer, 25', very good usable condition. Asking \$18,000 or best offer. 417-389-5380.

**GRAND COUNTRY** Lake-side RV Park. Daily, weekly, monthly, annual. Adult park. On Grand Lake. Space available. 918-314-9508.

**MOTORCYCLES**

**NIGHTWIND CYCLES**  
1004 Walnut, Lamar, MO.  
Reasonable rates.  
Motorcycle inspection station.  
**BIG SALE ON ROADKILL T-SHIRTS-\$5 EACH!**  
Now have full line of biker apparel and gear!  
Also Billiard supplies!  
Year round gift certificates.  
Now accepting credit cards.  
Call for appointment  
417-682-3733.

**TRANSPORTATION**

**ANTIQUES & CLASSICS**

1977 CHEVY NOVA, red, grey interior, 305 engine, original owner. Excellent condition! Asking \$6500. 620-249-4685.

Exceptional 2001 Corvette Convertible. Yellow with black leather and top. No dealers please. \$23,500. 417-678-5700

**HEAVY EQUIPMENT**



**EQUIPMENT UNLIMITED, INC**  
TRUCKS & SALES

**WE BUY AND SELL:**  
Dozers; backhoes; skid-steers; dump trucks; bucket trucks; semis; trailers of all sizes; forklifts; various quick attachments.  
Call Robert 918-801-3269.

**SMALL ADS, BIG RESULTS!**

**BIG RESULTS!**

Small ads produce big results. Ask about our advertising rates to fit any budget.

**AUTOMOBILES**

**2010 DODGE JOURNEY AWD 4DR CREW**

3.5L V-6, AWD.  
2ND ROW FOLDING SEAT,  
CARGO NET, REAR SPOILER  
182K MILES,  
LOTS OF EXTRAS!  
SEE OUR WEBSITE FOR MORE PICTS!



**Only \$6,995**

**Burr Motor Co.**  
639 W. Coler, Neosho, MO  
417-451-1029  
www.burrmotorcompany.com

**TRANSPORTATION**

**TRUCKS, 4X4'S, SUV'S**

\*1966 FORD I-Beam 1/2 ton pickup truck, runs and drives but needs to be restored, \$7000.

\*1980 FORD 3/4 ton flat-bed truck, 4x4, \$3900.

\*1995 DODGE 3/4 ton 4x4, with air, low miles, \$6750.

\*930 B Case tractor, diesel engine, \$9300.

\*White backhoe model 1615, \$15,000.

\*Diamond T dumptruck, 16-18 ton, \$16,900.

\*1979 Ford dumptruck, 5 ton, \$4950.

\*2001 Ford passenger bus, seats 25, \$8350.

\*Horse trailer, \$800.

All have good tires.  
602-999-3899  
417-223-2000



**2003 CHEVY SILVERADO LS, 2500HD, 4WD, Crew, Duramax diesel 6600 V8 engine, Allison 5 speed automatic transmission, Summit white, 4-wheel ABS with Dynamic rear proportioning, exterior and convenience features. Everything in excellent condition! Here is for the camper only! Built in 2014. Roof is 100% waterproof. (4) corner jacks are the best, cost \$1000. The inside is completely finished out paneling and painted, Carpeted, new mattress, window curtains and 110 volt and 12 volt lights. Plumbing. Porta-potti, propane heater, water tank, pump, lavatory, outdoor shower. Completely wired with both 110 and 12 volt. Generator compartment. Cost for this camper was \$12,000. Camper spent most of it's life in my shop! Great unit to vacation/ hunt/ fish in!!! Signed: Doval 918-533-6677. Miami, OK.**



CHEVY TRAILBLAZER, 2008, V-6 auto, all power, air, sunroof, leather seats, 141,000 miles, great condition, \$5450. 417-434-1950.

[WWW.BIGNICKEL.COM](http://WWW.BIGNICKEL.COM)

**DO YOU LIKE YOUR PICKUP, SUV, OR CAR?**

Get your car ready now for those fun summer trips!



**Let's Get Er Done!**



**DON'T TRADE IT IN ON A USED CAR YOU KNOW NOTHING ABOUT, Give Your vehicle new life with a DYNATECH Remanufactured Engine!**

COMPLETE MACHINE SHOP SERVICES

**WE ARE YOUR PICKUP & SUV HEADQUARTERS!**

1 YR. UNLIMITED MILES PARTS & LABOR WARRANTY

**WE DO BETTER THAN OUR COMPETITOR FOR LESS \$\$\$**

**DYNATECH** IN THE SAME LOCATION FOR 30 YEARS  
ENGINE REBUILDERS **620-783-5041** (6 Miles West of Joplin on 7th St.)  
724 W. 7th • Galena, KS

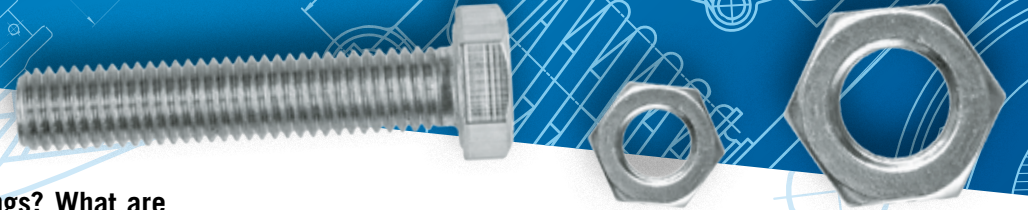
FIND THE **PERFECT PET** FOR THE **PERFECT PRICE**

Find your next fluffy, furry or feathered friend in your local newspaper classifieds!



# ASK THE MOTOR MEDICS<sup>®</sup>

Automotive Advice from the Under The Hood<sup>®</sup> Show



Dear Motor Medics,

Do diesel vehicles need fuel system cleanings? What are some good vehicles that I as a high school student could get under \$5,000? I would prefer a vehicle with a manual transmission. Do you have any suggestions for me?

Thank you,  
Keegan in Ainsworth Nebraska

Dear Keegan,

Diesel vehicles can benefit from fuel injection cleanings. We find when we clean diesel engines the fuel mileage improves. The dirtier the fuel injection system is, the better the improvement you can expect to see after a cleaning. Keeping deposits off the tips of injectors can also prevent early wear of the injectors and help extend the life of the pump.

As for a vehicle, you'll have to make that decision on your own based on what is available in your market for the price. Vehicles are hard to find lately with less to choose from. I would stay away from vehicles that are high performance such as supercharged engines or tuner cars that have been modified so you can get something more reliable. The performance cars are cool, but you can get a fast car that will need work and cost more in insurance, or a nice reliable car with more features and spend the same amount. Maybe even have some left over for the stereo. A very important pre-purchase item is to have a used car inspection performed by a knowledgeable mechanic before you buy the vehicle so that you don't end up with unforeseen expense.

Take care,  
the Motor Medics

Dear Motor Medics,

I have a 2003 GMC Pickup with 125,000 miles. Recently while driving it a light on the dash reads Reduced Engine Power with the check engine lamp on and the vehicle speed is limited to approximately 25 MPH. I had a diagnostic scan which returned a code of P1516, and they said everything they could find pointed to the throttle body actuator. Is it possible that the problem could be the throttle body being dirty and running cleaner through the gas tank will help? If the throttle body needs to be replaced, what should I expect the cost to be? P.S. this has happened about three times in the last 150 miles.

Thank you,  
Dwight in Worthing South Dakota

Dear Dwight,

GM light duty trucks now have this type of electric throttle system to control engine speed and cruise control. The system is a very sound one with several sensors to act as backups for the other so the system can tell if there is a failure and can shut it down or limit power for safety. The code you have tells me that the engine has seen a circuit failure in the throttle body. This means the throttle body sensors or the wiring to them may have failed. Cleaning will not help this one or have prevented the failure. You will need to have a shop use a lab scope to read the voltages to verify the problem. Check around for local pricing.

Take care,  
the Motor Medics

Dear Motor Medics,

My car runs pretty well, and I am not one to bring it in just to have it checked over once in a while. I am more of the kind of person who visits the shop once the car has broken. After listening to your show, I am thinking I may be able to save some money by doing some preventative maintenance instead of waiting for the major breakdowns. Recently my brakes started making some noise, but they don't do it every day. How can I tell the difference between needing brake repairs or if it's just a little noise; and if I wanted to be proactive on brake maintenance how often should they be checked? I have been in before for a squeak and they said they were fine, just a little rusty.

Thank you,  
Joanne in Madison Wisconsin

Dear Joanne,

Routine maintenance will save you money on repairs. Regular inspections should be performed on safety items at each oil change and addressed as needed. These inspections are done for free at most shops so check around if yours does not offer this service. Inspect brakes annually and completely check them right away if there is a change in pedal travel or if noise is heard when applying them accompanied by grinding. Damp mornings can cause rust on the braking surfaces resulting in noise. This should go away after a couple of pedal applications and should not be felt in the pedal.

Take care,  
the Motor Medics

Dear Motor Medics,

I am a longtime fan of yours and you have saved me countless dollars on repairs by teaching me how to do them myself, and when they are larger than I can handle you have taught me how to look for the best mechanic. I drive a 2001 Ford Explorer and I am getting ready to pull a trailer with it. I have owned it for several years and it has a hitch but no trailer light connector. This will be my first time pulling a trailer with this vehicle. Can I just tap into the taillights to connect my trailer light connector, or do I need something special? I don't want to cause a problem with the vehicle. I have also serviced the transmission and rear end prior to towing as well.

Thank you,  
Darren in Port Saint Lucy Florida.

Dear Darren,

Great idea you had on the proactive transmission and rear differential service. Depending on the size of the trailer and load you may think about a transmission cooler if the Explorer is not equipped with one. For the trailer wiring you need to make sure you do not overload the electrical system. On this vehicle and many others, a tow wiring kit is advised. Available at most auto parts stores this kit takes its power from the battery directly and uses relays activated by the vehicles lights to power the trailer lights preventing damage to the vehicles system.

Take care,  
the Motor Medics

FOR ENTERTAINMENT ONLY • Always consult your local shop and follow all safety procedures before repairs.

Come visit the Motor Medics<sup>®</sup> online @  
[underthehoodshow.com](http://underthehoodshow.com)

**Branson**  
TRACTORS

**Heaviest Tractors in their Class,  
with the Most Loader Lift Capacity!  
All Branson Tractors include  
FREE LOADER!**

**6 Year Limited  
Warranty**

**Financing  
Available**

**BRANSON 2515R**

25HP, 4WD, W/LOADER, 12X12 Shuttle Shift Trans, 2200 lbs loader lift capacity, 3022 lbs tractor weight only.



**\$264<sup>86</sup>/MO.**

0 DOWN, 84 MO FINANCING WAC

**BRANSON 2515H**

25HP, 4WD, W/LOADER, HST Trans, 2200 lbs loader lift capacity, 3022 lbs tractor weight only.



**\$278<sup>65</sup>/MO.**

0 DOWN, 84 MO FINANCING WAC

**BRANSON 3515R**

35HP, 4WD, W/LOADER, 12 X 12 Shuttle Shift trans, 2200 lbs loader lift capacity, 3022 lbs tractor weight only.



**\$330<sup>88</sup>/MO.**

0 DOWN, 84 MO FINANCING WAC

**BRANSON 4815R**

48HP, 4 WD, w/Loader, 12X12 Shuttle Shift Trans, 2 sets Remotes, 2200 lb Loader Lift Capacity, 3100 lb Tractor weight.



**\$347<sup>57</sup>/MO.**

0 DOWN, 84 MO FINANCING WAC

**BRANSON 2515R  
& BACKHOE**

25HP, 4WD, W/LOADER, & Backhoe to header, 12X12 Shuttle Trans, 2200 lb loader lift capacity, 3022 lbs tractor weight only.



**\$369<sup>62</sup>/MO.**

0 DOWN, 84 MO FINANCING WAC

**BRANSON 2515H  
& BACKHOE**

25HP, 4WD, W/LOADER, Hydrostat Trans, 2250 lbs loader lift capacity, 3022 lbs tractor weight only.



**\$383<sup>41</sup>/MO.**

0 DOWN, 84 MO FINANCING WAC

**BRANSON 4820 CAB**

48 HP, 4WD, W/Loader, Cab w/H&A, 16 X 16 Shuttle Shift Trans, 2 sets Remotes, 2700 lb Loader Lift Capacity, 4200 lbs. Tractor Weight



**\$485<sup>41</sup>/MO.**

0 DOWN, 84 MO FINANCING WAC

**BRANSON 5520 CAB**

55 HP, 4WD, W/Loader, Cab w/H&A, 16x16 Shuttle Shift Trans, 2 sets Remotes, 2700 lb. Loader Lift Capacity, 4200 lbs. Tractor Weight



**\$512<sup>98</sup>/MO.**

0 DOWN, 84 MO FINANCING WAC

**MIDWEST LARGEST BRANSON DEALER & TOP "10" NATIONWIDE!**

**Tatum Motor**  
FARM TOOLS SINCE 1889

931 N. BUS. HWY. 71  
ANDERSON, MO  
417-845-3563  
HOURS M-F 8-5 • SAT 8-NOON

1033 W. HENRI DE TONTI BLVD  
(412 WEST), TONTITOWN, ARK  
479-361-9488  
HOURS M-F 8-5 • SAT 8-NOON

665418ch

S A L E S • S E R V I C E • P A R T S

# CAS STEEL

## METAL BUILDING SUPPLIES



### METAL CULVERTS

- 23 STEEL ROOFING COLORS plus 18 Textured Colors
- VINYL SIDING
- GARAGE DOORS
- TRIM
- BUILDING KITS Steel Or Wood

**LIFETIME WARRANTY**

**FOR SALE:**

(1) 12x15 insulated Commercial Ribbed Door **\$1,331**

(2) 8x8 insulated Commercial Ribbed Door **SOLD** each

[www.cassteelneosho.com](http://www.cassteelneosho.com)  
**18027 E. Hwy. 86 - Neosho, MO**  
 (5 Miles East of Walmart on 59 Hwy. - Old 60 & 71 Alt.)  
**Toll Free 855-455-2526 or 417-455-2525**  
 Mon-Fri • 7:30-5:00



## American Made Metal Roofing

40 Year Warranty Metal...\$3.09

29 Gauge 10 Year.....	\$2.89
29 Gauge #1 Galvalume.....	\$2.55
26 Gauge 40 Year.....	\$3.85

**417-553-8697**

**PORTABLE BUILDINGS**

**REDUCED METAL PRICING**



202 S. Prigmor Joplin, MO. 417-553-8697 \*29 Gauge 10 Yr. possibly not American made

# BRB BUILT RITE BUILDINGS

1110 W. Harmony Neosho, MO  
**417-632-4675**  
[www.builtritebuilding.com](http://www.builtritebuilding.com)

- 2x6 Nailers
- Trusses 4' On Center
- Patented Concrete Pier Options Available
- Free Estimates
- McElroy Metal (40 Year Warranty)

### BUILT-RITE POST FRAME BUILDINGS

- Shops • Garages • Machine Sheds
- Cattle Facilities • Homes
- Horse Barns • Riding Arenas



Serving The Area For Over 35 Years. Locally Owned & Operated.

### FIND THE PERFECT PET FOR THE PERFECT PRICE IN THE PERFECT PLACE FOR DEALS

Find the stuff you want and sell the stuff you don't in the newspaper classifieds.



## SUPERIOR METALS SALES INC.

Metal Building Supplies & Components

- Commercial • Agriculture • Shop Buildings
- Custom I-Beam Buildings w/26 ga. 40 Year Warranty on all Prime Steel Panels

**HAY BARN 40x75x16**  
 Roof Only • Materials CALL FOR PRICING DUE TO RISING COST OF STEEL. All American Steel. Install Available.

- 29 Gauge 40 Year, Painted, Warranty.
- 19 Colors Available.

Steel Pricing Fluctuation. Please Call for Quotes  
**Call For Mini-Storage Quotes**

Toll Free 1-888-364-9527  
 Office 1-417-671-8015  
 Fax 417-671-8018  
 Hours: Mon-Fri 8am-5pm  
**12760 St. Hwy. 76. • Cassville, MO 65625**  
[sales@superiormetalsalesinc.com](mailto:sales@superiormetalsalesinc.com)




**15 WORDS \$11.75 - CALL THE BIG NICKEL TODAY AT 417-624-4100!!**

## VANOVER METAL BUILDING SALES, INC.

LOCATED 11 MILES WEST OF JAY, OK. ON HWY. 20  
**(918) 253-6030 (800) 511-0634**  
 MON-Fri 8:00 - 4:30

### Carports and Garageports

Why wait several months to get a carport from someone else... At Vanover Metal, We build ours in house, ready in 2 - 3 weeks. Delivery available. Built from 12' to 24' wide and 10' to 40' long Stop by to discuss one today!



### METAL PRICES STILL ON THE RISE!!!!!!

Due to national demand, metal prices are still rising. Act now to get the best prices before next spring. Metal roofing starts at \$1.12/ sq foot. Act now before the next price increase at the end of each month.

## Best Buy Builders & More

Call or Text **417-508-9351**  
 We Build All Sizes!

 <b>40'X40'X12'</b> <b>\$39,900</b>	 <b>27'x30'</b> <b>\$17,272</b>	 <b>28'X36'X8'</b> <b>\$23,500</b>
 <b>24'X40'X8'</b> <b>\$19,900</b>	 <b>40'X50'X12'</b> <b>\$43,995</b>	 <b>30'X60'X12'</b> <b>\$42,995</b>

**Barn Dominion 40'x60'**

**JOPLIN TRUSS**  
ENGINEERED QUALITY CONSTRUCTION  
2 LOCATIONS TO SERVE YOU:  
Stark City, MO  
417-472-6800  
Hwy. 96 - Avilla, MO  
417-246-5215

**JONES BUILDING SYSTEMS**  
www.jonesbuildingsystems.com  
Office 479-644-8336 • Fax 479-657-6701

Metal Buildings  
Mini Storage  
Metal Roofing  
Site Work and Concrete

★ No Dirt, Tax or Delivery Included Yet ★

**RED IRON**  
Installed Includes Slab  
100x125x16  
Insulated  
Incl. 4 O/H &  
4 W/I Doors  
**CALL FOR PRICE**

**RED IRON HAY BARN**  
40x75x16 Installed  
Roof only w/piers  
**\$35,654**

**RED IRON HAY BARN**  
Installed  
64x75, Roof only  
w/piers  
**\$50,568**

★ Commercial & Residential ★ Heavy Built All American Steel ★

**QUALITY POST FRAME CONSTRUCTION LLC**

POLE BUILDINGS • GARAGES • GENERAL CONSTRUCTION  
QUALITY WORKMANSHIP • METAL ROOFING  
FREE ESTIMATES!  
**WILLARD KNEPP 918-533-2637**  
FAIRLAND, OK • NO SUNDAY CALLS, PLEASE

**IDEAL STRUCTURES LLP**  
Specializing in Pole Buildings, Garages, Shops, and General Construction  
Marion Sommers PHONE: (479) 335-6230  
EMAIL: MarionSommers69@gmail.com  
Hindsville, AR 72738

**EQUIPMENT & SUPPLIES**

**PRECISION EXCAVATING**  
Building Pads - Ponds - Concrete  
Septics - Roads & Driveways  
Land Clearing Demolition  
& much more  
Matthew Zimmerman  
Wyandotte, OK  
918-961-2183

*Customer Satisfaction Is Our Goal!*

**Your Authorized Gooseneck™ Dealer**

**FRYE FARMS**  
The #1 Dealer in Missouri for Gooseneck Sales  
\$s in 2004-2020.  
Reason: PRICE!

Trade In's Welcome!

Financing available thru  
**Farm Credit Services** BBB  
At the heart of a growing America.

**FRYE FARMS TRAILERS**  
Seneca, MO • 417-438-0146

The Big Nickel is published every Thursday.  
© Phillips Media Group 2021. All Rights Reserved

**BIG NICKEL**  
2918 E. 20th • P.O. Box 1567 • Joplin, MO 64802  
417-624-4100  
Fax: 417-621-0287  
EMAIL: classified@bignickel.com  
www.bignickel.com

The publisher reserves the right to edit, classify, or reject any advertising copy. The Big Nickel assumes no financial responsibility for typographical errors in advertising or for omission on any advertisement further than the amount received for payment of such advertising in which the error occurred. Advertisers should check their advertising for accuracy when ad appears. The Big Nickel is not responsible for errors after the first insertion. One copy FREE per reader. Additional copies available only upon request. Payment by check authorizes The Big Nickel to electronically collect returned checks, plus \$25 service charge. Stopped or cancelled classified ads will receive an in house credit, good for 12 mos. No Cash/Credit Card Refunds! Copyright 2020. All rights reserved.

**15 WORDS \$11.75**  
- CALL THE BIG NICKEL TODAY AT  
**417-624-4100!!**

**B Section Index**

**AGRI-BUSINESS** ..... Page 02  
Metal Buildings..... Page 02  
Equipment & Supplies .... Page 03  
Cattle ..... Page 06  
Farms & Acreage ..... Page 07  
Hay/Feed/Seed..... Page 07  
Horses & Mules..... Page 07  
Livestock-AGRI..... Page 07  
Land/Pasture ..... Page 07  
**YARD SALES** ..... Page 07  
YS-Garage Sale..... Page 07  
**AUCTIONS & ESTATE SALES**..... Page 07  
Auction Sales ..... Page 07

**INTERSTATE POLE BUILDINGS**

• Commercial • Mini Storage • Garages • Horse Barns • Shops • Agriculture  
**Darrell Knepp • Sarcoxie, MO**  
417-437-1452 • interstate.buildings@privategarden.org

NO SUNDAY CALLS, PLEASE

**BAD BOY TRACTORS LAMBERT**  
Tractor & Machinery Sales, L.L.C.  
8001 S.E. Hwy 66, Galena, KS  
www.lamberttractor.com  
620-783-1895

Get up to \$300 OFF on a qualified Bad Boy implement with a new Bad Boy Tractor purchase!

**WE STOCK ALL BAD BOY 3-POINT EQUIPMENT**

**6 YEAR POWER TRAIN WARRANTY**

Bad Boy 2024H Tractor, HST, Loader, 4wd, 24hp, industrial tire..... <b>\$257 per mon.</b> (\$0.00 Down, 1.99% for 84mon W.A.C.)	Bad Boy 3026H Tractor, HST, Loader, 4wd, 26hp, industrial tire..... <b>\$273 per mon.</b> (\$0.00 Down, 1.99% for 84mon W.A.C.)
Bad Boy 3026H Tractor, HST, Loader, Backhoe, 4wd, 26hp, industrial tire..... <b>\$356 per mon.</b> (\$0.00 Down, 1.99% for 84mon W.A.C.)	Bad Boy 4025H Tractor, HST, Loader, 4wd, 25hp, industrial tire, 2200lbs loader lift capacity..... <b>\$325 per mon.</b> (\$0.00 Down, 1.99% for 84mon W.A.C.)
Bad Boy 4025H Tractor, HST, Loader, 4wd, 25hp, industrial tire, 2200lbs loader lift capacity..... <b>\$414 per mon.</b> (\$0.00 Down, 1.99% for 84mon W.A.C.)	Bad Boy 4035H Tractor, HST, Loader, 4wd, 35hp, industrial tire, 2200lbs loader lift capacity..... <b>\$361 per mon.</b> (\$0.00 Down, 1.99% for 84mon W.A.C.)

**AGRI-BUSINESS EQUIPMENT & SUPPLIES**

(2) 23.1-30 BF Goodrich 8-ply at 60%, \$650 each, \$1200 for the pair. 417-235-8547.

2009 JOHN DEERE 630 hydraflex with 30' Wemco trailer, new sickle and guards 200 acres ago, high dam, height control in rigid position. Always stored inside, \$14,500. 417-235-8547.

2013 JOHN DEERE 5055E pre emissions, 43 hours, synchronized 2WD, front end loader, rotary cutter, 9x3 transmission, rear hydraulics, \$23,000. 620-305-9018.

2018 KIO TI 2610 HST, 4x4, 20 hours, loader, 3 pt. hitch, quick attach, speed controlled (not installed), \$15,000. 620-305-9018.

**GOBOB**  
America's Ranch Equipment  
Don't Miss Out!  
Don't Spend a Dime until Next Year and get a 100% tax deduction with Section 179  
**CALL NOW to Find Out How**  
**BigGoBob.com**  
855-880-7961

**MAKE A SPLASH**  
without wasting cash  
Small ads produce big results. Ask about our advertising rates to fit any budget.

# GUNS, AMMO, KNIVES & MORE

The map displays the following businesses and their locations:

- 1. FORT SCOTT GUN & PAWN**: Located near Fort Scott, MO. Website: [www.fortscottga.com](http://www.fortscottga.com). Phone: 417-624-4100. Slogan: "We ain't pretty... but we're CHEAP!"
- 2. LIBERTY TREE**: Located near Carthage, MO. Hours: Mon-Sat 10am-6pm. Address: 530 W. Fir Rd, Carthage, MO 64836. Phone: 417-358-5700. Website: [LTGUNSHOP.COM](http://LTGUNSHOP.COM). Services: GUNS-AMMO-SUPPLIES-CONCEALED CARRY TRAINING.
- 3. GUNS & AMMO**: Located near Monett, MO. Services: BUY \* SELL \* TRADE. Specializes in QUICK DRAW GUN. Address: 801 South Kyler, Monett MO. Phone: 417-354-8833.
- 4. JACOBSON'S GUN ROOM**: Located near Joplin, MO. Services: Gunstore & Art Museum. Vintage - Pro Target - Historical Hunting - Protection - Blades & Accountments. Address: 1410 S. Main St., Joplin MO. Phone: 417-825-4010.
- 5. STEVE'S TRADING POST**: Located near Joplin, MO. Address: 4324 South Main. Phone: 417-782-9600.
- 6. MAD MAN MOTOR GUN & PAWN**: Located near Neosho, MO. Slogan: "...the right of the people to keep and bear arms shall not be infringed." Address: 401 WEST COLER, NEOSHO, MO 64850. Phone: 417.355.2514.

**YOUR AD COULD BE HERE!  
CALL 417-624-4100**

# GUNS, AMMO, KNIVES & MORE





**CALL FOR CASH PRICE!**

NO DPF FILTER TO SERVICE OR REPLACE SAVES YOU TIME AND MONEY NO DOWNTIME NEEDED FOR REGENERATION

**7 YEAR**  
LIMITED POWERTRAIN WARRANTY

The World's #1 Selling Farm Tractor!

**LAMBERT**

Tractor & Machinery Sales, L.L.C.

The Largest Mahindra Dealer in Kansas!

8001 S.E. Hwy 66, Galena, KS

www.lamberttractor.com

**620-783-1895**

We are Open. Curbside Service Available



\*2018 data including all Mahindra brand sales



Mahindra 4540 Gear, w/loader, 4x4. 40 HP

**.....\$347/MO**

*\$0 Down, 84 Month Financing Available W.A.C.*



Mahindra 2638 HST, 38hp, quick attach loader & quick attach bucket, 4x4.....**\$389/MO**

*\$0 Down, 84 Month Financing Available W.A.C.*

**Buy any NEW TRACTOR, and get a 4, 5, or 6-ft. cutter HALF PRICE!**



Mahindra 1626 Shuttle, w/loader, 4x4, 26 HP

**.....\$312 /MO**

*\$0 Down, 72 Month Financing Available W.A.C.*



Mahindra 4550 Gear, w/loader, 4x4, 50 HP

**.....\$375/MO**

*\$0 Down, 84 Month Financing Available W.A.C.*



Mahindra 5145 Shuttle, w/loader, 4x4, 45 HP

**.....\$393/MO**

*\$0 Down, 84 Month Financing Available W.A.C.*

**STIHL**

**BLOWERS**  
STARTING AT  
**\$139<sup>99</sup>**

LAMBERT TRACTOR  
620.783.1895

**STIHL**

**CHAIN SAWS**  
STARTING AT  
**\$189<sup>99</sup>**

CHAIN SAW CHAIN SPECIALS!

LAMBERT TRACTOR 620.783.1895

**BUSH HOG**  
Performance You Can Count On™

Bush Hog 11251720F Double Bale Spear, SKU .....**\$599.00**  
 Bush Hog Pallet Fork, SKU .....**Starting at \$799.00**  
 Bush Hog RT72G-1X, 72" Tiller, 3point .....**\$3,500.00**

**BAD BOY MOWERS**

LAMBERT TRACTOR  
620-783-1895  
8001 S.E. HWY. 66,  
GALENA, KS

# USED Equipment

John Deere 250 Skid Steer, 65hp, 1000hrs, foam filled tires, hand & foot controls .....**\$20,000.00**

SKU Front Bale Spears ..... **Starting @ \$599.00**

New 3 point Cutter .....**Starting @ \$1,500.00**

2019 Kioti SM2210 Tractor, 296hrs, HST, 60" belly mower, loader, 4wd.....**\$12,500.00**

2021 Mahindra 1626, 55hrs, HST, 4wd, loader, new 5 ft cutter, new 5 ft. box blade....**\$20,500.00**

2020 Mahindra 1640, 50 hrs. HST 4WD, loader & 5 ft. cutter. LOOKS NEW! .....**\$24,500.00**

See Full Line Of Used Equipment & Implements At  
**lamberttractor.com**

## RESIDENTIAL

**HUSTLER TURF EQUIPMENT**

**MADE IN THE USA**

**RAPTOR SERIES**

Lambert Tractor  
620-783-1895  
8001 S.E. Hwy. 66, Galena, KS

AVAILABLE DECK SIZES  
**42" & 54"**

AVAILABLE DECK SIZES  
**42" & 54"**

AVAILABLE DECK SIZES  
**42" - 60"**

AVAILABLE DECK SIZES  
**48" - 60"**

665523jn

**KIOTI** Since **John's Tractor Works & Equipment Inc. 1985** *run ahead of the pack*  
**YOUR AGRI. DIESEL SERVICE SPECIALIST**  
 Mon-Fri 8am-5pm  
 Sat 8am-Noon  
 3 miles East of Vinita,  
 OK on Hwy 60  
 Serving the 4 State Area  
 for over 35 years  
**918-256-5774**



**6 YEAR**  
UNLIMITED HOUR  
POWERTRAIN WARRANTY



**NS** 45-60 HP  
**0%** UP TO **48** MONTHS FINANCING\*  
**OR** UP TO **\$4300** CASH BACK\* (T-L-B)



**6 YEAR**  
UNLIMITED HOUR  
POWERTRAIN WARRANTY

**DK** 40-58 HP  
**0%** UP TO **48** MONTHS FINANCING\*  
**OR** UP TO **\$4300** CASH BACK\* (T-L-B)



**6 YEAR**  
UNLIMITED HOUR  
POWERTRAIN WARRANTY

**CK** 35-40 HP  
**0%** UP TO **48** MONTHS FINANCING\*  
**OR** UP TO **\$3100** CASH BACK\* (T-L-B)



**RX** 66-73 HP  
**0%** UP TO **48** MONTHS FINANCING\*  
**OR** UP TO **\$6500** CASH BACK\* (T-L-B)

**EQUIPMENT & SUPPLIES**

Get More with **LS Tractor!!**  
 Excell In Your Field™

Because you want to work your land, not on your tractor.

Continuing more than 30 years of excellent value, performance, and exceptional customer satisfaction established by our founding company LG, we are so confident in the quality of our tractors, we back each one with our 6 year limited warranty.



**0% Down — 84 Mos. WAC**  
**Free Loader**

**LS Tractor**  
 Excell In Your Field

More Tractor, More Value, More Satisfaction

**MT7101CPS**

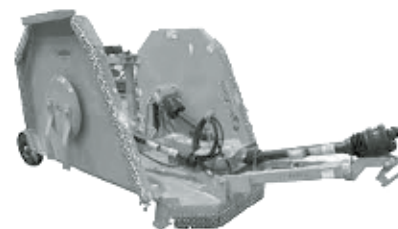
- 6-Year Limited Warranty
- 100 HP
- Power Shuttle Trans.
- Buddy Seat
- 2 sets rear remotes & more

Since **1967** **Walt's Tractor LLC** **55** Years  
**417.472.7200**  
 12 Miles East of Neosho on Hwy. 86

**HYDRAULIC CYLINDER REPAIRS, HOSES & MUCH MORE AT WALT'S**

**Bush-Whacker®** The Perfect Mate For ANY Tractor!  
 TOUGH ON GRASS. EASY ON YOUR WALLET

**CUTTERS THAT WORK AS HARD AS YOU DO!**



With sizes from **5 ft. to 20 ft.**

**www.waltstractorsales.com**  
 Where Service is Always in Season!

**CATTLE**

(20) ANGUS HEIFERS, representing popular AI sires, 9 months old, one or all. Our Place Angus 417-825-9862.

ANGUS BULLS, AI sired. Semen tested and ready for service. Our Place Angus, 417-825-9862.

**BLACK GELBIEH BULL, 18-24 months, calving ease, AI sired, semen and trich tested. 417-214-4306 MAST FARMS.**

**BRANGUS BULLS** Gentle, small birth-weights. Bulls are service age, virgin bulls, semen checked, raised on forage, and ready to use. Hatfield Brangus Bentonville, AR Home 479-273-3921 Cell 479-531-2605 email: drchas@cox.net

Limousin bulls, reds and blacks, large selection, bred and open Limousin heifers. Double J Ranch, Will 417-350-9810, 417-214-4567.

CRYSTAL SPRINGS LIMOUSIN. Purebred Limousin Bulls, 12-36 months. Reds, Blacks and Whites. Heifers also. Most polled, bred for calving ease, calm. 38 years breeding Limousin. 417-540-0277.

**REGISTERED CHAROLAIS** Yearling Bulls. EPDs, BW, WW, YW, big and stout. Weaned heifers and bulls. **Wright's Charolais, Mt. Vernon, MO. 417-466-3560, 573-512-1614 417-466-8117 417-466-8158**

**WARSTLER HAY & CATTLE** is offering 14-20 month old Red and Black Balancer Bulls. Low birth weight, great growth, excellent maternal traits, prices starting at \$2300. Alex 417-438-0984.

**Registered Red Angus and Sim-Angus Bulls, yearlings-2 year aged advantaged bulls. DIAMANTE RED ANGUS RANCH Diamond MO. Herdsman Jarrod Todd 417-846-3248, 417-325-6292.**

**REGISTERED ULTRABLACK & BRANGUS BULLS, \$2000;** Replacement Heifers, \$1250. Top bloodlines. Gentle. Delivery available. Lots of happy customers! **Discounts for Veterans!** Horseheadranch.net. **918-695-2357**

**Schlatter Herefords**  
 Altamont, KS

**REGISTERED POLLED HERFORD BULLS** 18 months old right now, with good dispositions and genetics; yearling heifers are ready. 620-778-8561. schlatterherefords.com

Advertise your Flea Market or Antique Store in the Antique & Flea Market Directory. Call Billie for more information and special pricing. 417-624-4100.

Now Open! **TRIPLE E** Openings available  
**PROCESSING**  
 16389 Lawrence 1135, Mt. Vernon, MO 65712 • 417-205-9062  
**BEEF • PORK • DEER**

**CATTLE**

**Wheeler Livestock Auction**

**Special Stock Cow Sale**

**Osceola, MO**

**SAT., OCT 29, 2022 • 6:00 P.M.**

**Expecting 800 head of Outstanding Cow/Calf pairs, Heifers and Breeding Bulls**

**Bracher Ang Bulls-**  
• 6 Reg Ang bulls 20mo, weighing 1,500lbs.  
**Indian Creek SimAngus-**  
• 5 Blk SimAng bulls 16-22mo.  
**Emerald Lane Angus-**  
• 3 Ang bulls 18mo. 2 Ang bulls 30mo.  
**Roy Freeman-**  
• 2 Reg Red Ang bulls, 18 mo.  
**John Neale Angus-**  
• 3 Purebred Ang bulls, 18 mo.  
**CJ Cattle Co-**  
• 2 Reg Red Gelb bulls, 18 mo. 2 Reg Red Balancer bulls, 18mo. 1 Reg Red Gelb hfr & calf. 3 Gelb hfrs, open weighing 700lbs.  
**Nevada FFA-**  
• 1 Bull ¾ Red Ang ¼ Char, Dark Yellow, 18 mo.  
**Brownsberger-**  
• 2 Reg Blk Ang bulls 30mo.  
**Bradley Farms-**  
• 2 Reg Char bulls 18mo.  
**Wittmeier-**  
• 4 Red Ang bulls 18mo.  
**Lysinger-**  
• 2 Blk Sim Ang bulls, 30mo.  
**Zimmerman-**  
• 1 Blk SimAng bull 30mo. Homozygous Blk and polled.  
**Peterman-**  
• 1 Red Ang Balancer bull, 2y/o, 1,600lbs.  
**Homestead Farms-**  
• 1 Blk Ang bull 2 y/o, Worthington Genetics.

**C&B Farm-**  
• 14 Purebred gray Brahma hfrs. open, weighing 750lbs. JD Hudgen blood line. Gentle & good, born & raised in MO.  
**Jimmy Sanders-**  
• 40 Fancy Ang hfrs 2y/o, 1,100lbs w/30 Ang calves. Rest bred 3rd. All hfrs home raised, 100% Gardner Genetics. Fancy set of hfrs.  
**George Farms Dispersal of Spring Calvers-**  
• 25 Big Fancy Ang cows 3-5y/o, 1,400lbs. Bred to Char or Herf bull to start calving Feb 10th. 24 Ang cows 1,300lbs, 5y/o bred to Jamison Hereford, to start calving Feb 10th. The above 49 cows are good calf raisers. Sold calves here in Sept.  
**Tyler Smith-**  
• 35 Blk BrangusX cows 4-6y/o. Bred 3rd to Ang or Hereford bull or w/calf. Good cows, all shots & gentle.  
**Robert Helley-**  
• 24 Red Ang cows 3-4y/o. Bred 3rd to good bulls. Nice cows, gentle w/complete health program.  
**Cliquot Farms-**  
• 38 Red Ang cows 3-5 y/o, 1,300lbs w/14 Red Ang calves. Rest are bred 3rd. 16 Red Ang cows 5-7y/o, 1,300lbs. Bred 3rd.  
**McNew Farms-**  
• 40 Red Ang cows 3y/o, bred to Blk Ang bulls. All cows coming for 2nd calf. All cows raised 1st calf. Calves weaned Oct 1st & cows worked Oct 1st. Cows to start calving Feb 15th.  
**W-G Compete Dispersal-**  
• 70 Char cows 4-7y/o, 1,250lbs w/30 calves weighing 300lbs. 20 Red AngX cows 4-6 y/o, 1,250lbs, bred 2nd & 3rd. The above 90 cows bred to Char or Herf bull.  
**Russell Johnson-**  
• 30 Blk cows 4-6y/o. Bred 2nd & 3rd to Blk LimFlex bull. All cows Home-raised & gentle.  
**John Ramer-**  
• 25 Blk & Red cows 4-7y/o. Bred 2nd & 3rd to Meade Ang bull.  
**Haden Foster-**  
• 44 Blk & Red AngX cows 5-SS, w/15 calves. Rest bred 2nd & 3rd to Ang bull. 2 Blk Ang bull 3y/o 1,600lbs.  
**Pete Schwartz-**  
• 50 Blk cows 3-6y/o, 1,200lbs. Bred to Bracher Ang bulls, to calve Feb 1st. Good calf raisers.  
**7-Meadow Farm-**  
• 23 Blk & BWF cows 5-7y/o, 1,250lbs. Bred to Ang bull, to calve Feb 1st. Good calf raisers, Complete Health program.  
**Gary Mahlock-**  
• 16 Blk & BWF cows 5-7y/o, 1,250lbs. Bred to Ang bull, to start calving Feb 1st. Complete Health program.  
**Rick Mitchell-**  
• 10 Red cows 5y/o, w/10 blk SimAng calves up to 400lbs. Cows bred back to Blk SimAng bull. Good gentle cows.  
**Wood Farms-**  
• 12 Beefmaster cows 5-7y/o, w/ 5 calves. Rest to calve March 1st. Bred to Beefmaster bull.  
**Chris Schwartz-**  
• 36 Corriente cows 5-7y/o w/12 Ang calves. Rest bred to Ang bulls.  
**Sam Berry-**  
• 9 Blk cows w/9 calves 5-7y/o. Cows exposed back to SimAng bull.  
**Recharge Ranch Belted Galloway Complete Dispersal-**  
• 17 cows w/11 calves, 8 are registered. 2 bulls, 1 registered.

**Attn: Cattlemen some very outstanding cattle and pairs. All cattle selling due to feed and water shortage. Join us Saturday, November 5th at noon for the Seedstock Plus sale, featuring 50 Reg Red Gelbvieh & Balancer bulls, along with registered & commercial females.**

**November Stock Cow Sale-November 26th**

Osceola, MO • 685 SE 13 Hwy., PO Box 560  
BARN 417-646-8102  
Byron Wheeler-417-777-0897  
Les Tennis-417-466-8786  
Red Whistance 417-276-7909  
Burleigh Wheeler-417-840-6561  
Darwin Hearting-417-296-1029  
Kevin Wade-660-492-3279  
Tim Sherrer 573-855-1951

**WHEELER LIVESTOCK AUCTION INC.**

Barn Manager: Austin Shelby 417-309-1350  
Office Manager: Sarah Wheeler 417-399-4947  
Marketing Manager: Sue Hemenway

Bid online on CattleUSA • www.wheelerlivestock.com  
• Like us on Facebook-Wheeler Livestock Auction

ADVERTISE YOUR Flea Market or Antique Store in the Antique & Flea Market Directory. Call Billie for more information and special pricing.  
417-624-4100.

**HORSES & MULES**

**TEAM OF Draft mules, 12 years old, broke very well. 417-850-1726.**

**RANCH TIME ACCESSORIES**

LOOK GREAT FOR LESS...

- ★ CUSTOM HATS
- ★ HAND MADE BOOTS
- ★ WILD RAGS
- ★ WESTERN DECOR
- ★ COWHIDES & GIFTS
- ★ PURSES & WALLETS

NOW OPEN \*NWA MALL FAYETTEVILLE, AR 417-635-7777 \*Exit 46 • Mt. Vernon Blvd. Mt. Vernon, MO.

**HEARTLAND HORSE AND LIVESTOCK SALES LLC**

535 N. Subway Blvd. Nevada, MO

Like us on Facebook @Heartland Horse and Livestock Sales LLC for future consignments.

**SALES 2nd and 4th Wednesday of the month**

**Tack Sale Starts at 5pm with horses and livestock to follow.**

Owners:  
Nathan Collins 620-215-4745  
Karrie Collins 620-644-2197

**HORSES & MULES**

4-STATE DRAFT HORSE & MULE SALE, Ottawa County Fairgrounds, Miami, OK. October 28th and 29th. For more information call 918-540-4929.

**FARMS & ACREAGE**

WANTED: 40+ acres to lease/purchase within 20 miles of Carthage/Joplin with farm house. 417-388-8506.

**FARMS & ACREAGE**

(77) ACRES of farm land, good well, automatic water, pond, corral and holding pen, good fence, some divided pastures, Purdy, Missouri. 417-849-0514 please leave message.

**HAY/FEED/SEED**

HAY: 1st, 2nd and 3rd cutting Mixed grass, 4x5 round bales, net wrapped. No rain. Also have Silage for sale. Call 417-652-7364 or 417-235-9712.

**Goswick Services**

AGRICULTURE

ROCK HAULING  
LIME SPREADING & FERTILIZER

417-438-1110

**Land/Pasture**

**PRECISION LAND SERVICES**

WE CLEAR THE PATH TO YOUR DREAMS

Contact us for a FREE consultation and start the process of reclaiming your land. We offer the most ecological form of land clearing.

**ON SITE ROCK CRUSHING:**  
Up to 6" rocks • New construction Yard Preparation  
No small stumps after mulching  
precisionlandservicesllc.com

**Low Impact Eco-Friendly Land Clearing & Brush Cutting**

Before After

Contact us for a free estimate **417-846-3723**

**HAY/FEED/SEED**

**ATTENTION!**

**PURDY FARM CENTER INC.**  
100 W. Washington Street  
Purdy, MO 65734  
417-442-3254  
Last season's Green-Graze Supreme, \$15 a bag.

**QUALITY FEED at Affordable Prices.**  
16% mixed feed, \$340 a ton, \$330 in bulk; dry distiller grain, \$400 ton;  
16% mixed feed in 50lb sacks \$10  
1200lb. box on pallet \$204  
Bulk price \$10 off board price.  
Alfalfa, \$10  
Grass sq. bales, \$7 while they last!  
Straw \$4.  
Call for details. colleyfeed.com  
Located 4 miles west of Stotts City on Farm Road 2120.  
Contact: Lance 417-316-0574.  
Prices subject to change without notice.  
Call to inquire.  
Ask about delivery in bulk or super sacks.

Small square bales of orchard grass, horse quality; big squares of Brome hay; also round grass hay. 417-850-1726.

WANT TO BUY: Chicken litter in the house. Call 417-235-9712.

WINTER CEREAL RYE, cleaned and tested, .45¢ per lb. 417-235-8547.

**LIVESTOCK**

**GOODWOMAN POULTRY AUCTION**

Every Sunday 1pm. I-49, exit #17, 1 mile west. Great food. Good company. 25% Commission, 100% Fun  
You Bring It We will Sell It!  
Linda 417-346-9314.

LAYING HENS- 8 LAYING HENS FOR SALE. 6 BARRED ROCK, 1 WHITE LEGORN, 1 BLACK HEN. \$2.00 EACH 417-642-5650.

**15 WORDS \$11.75 - CALL THE BIG NICKEL TODAY AT 417-624-4100!!**

**LIVESTOCK**

**POULTRY HOUSE REMOVAL**  
We buy good quality chicken and turkey houses. Remove the houses and all deconstruction debris. Local professional crews. Serving since 1992.  
**Cedar Creek Contractors, LLC 785-217-3379.**

**YARD SALES**

**GARAGE SALE**

**MOVING SALE**  
1817 E. 18th JOPLIN, MO  
Friday & Saturday Oct. 28th & 29th, 8am-3pm  
Corner of 18th St. & Connecticut Ave.  
Beautiful queen size sleigh bed; queen size mattress, matching bedside tables; matching medium size armoire with 4 drawers; hosiery cabinet; really nice accent tables; storage cabinet (beautiful wood) for kitchen, bathroom or bedroom. Kitchen armoire for pantry or storage; bookcase; cute settee; huge selection of "Temptations" dinnerware; some pretty crystal, many gift items. (Nice) small appliances; great home decorations; desk; 3 stainless steel storage utility shelving; binoculars; many Beatles CD's (new); Michael Jackson CD's 9 (many new); Barbie dolls in boxes, never opened (Marilyn Monroe, Elvis, I Love Lucy); Antique toy metal car (with trailer), 2 carpet cleaning machines; nice kitchen storage containers; some cast iron- "griddle, skillet, etc."; purses; belts; designer shoes (lots of them really nice); really nice clothing (A LOT)! Beautiful faux fur coats; fun jackets; really nice (some brand new, some vintage Christmas decor items; nice patio furniture. Please note many items added after this ad went to press.  
Need a Sale? Call Us!  
Sale Prepared by "Just Get Organized!"  
Suzanne 417-825-7003

**AUCTIONS & ESTATE SALES**

**AUCTION SALES**

CASH BUYING  
COINS, GOLD, SILVER, JEWELRY, DIAMONDS, SAFES, OAK ANTIQUES, BRASS MICROSCOPES, MOBILITY SCOOTERS, ELECTRIC WHEELCHAIRS, ARROWHEADS, ANVILS, GUN COLLECTION, AMMO  
417-437-5317 DR. HAMLIN

WWW.BIGNICKEL.COM

**ONLINE ONLY AUCTION! #1 ESTATE JEWELRY LIQUIDATION**

441777 E Highway 60/66, Vinita, OK  
LOCATION: East of the Turnpike Overpass on 60/66 ½ Mile, Top of the Hill at the old Jones Oil Company Building - Auction Signs Posted!

You're Invited To Come & View The Items Selling!  
ON-SITE PREVIEW 1 to 3 PM, Sunday, Oct. 30<sup>th</sup>  
**AUCTION CLOSURES 7 PM, Wed., Nov. 2<sup>nd</sup>**  
PICK UP PURCHASES 4 to 8 PM, Thurs., Nov. 3<sup>rd</sup>  
DIAMONDS - GOLD - SILVER - PRECIOUS STONES - VINTAGE JEWELRY - WATCHES - COSTUME JEWELRY - PRECIOUS STONES - JEWELRY MAKING SUPPLIES & MORE!  
This is the First of Several Upcoming Auctions Selling Jewelry From 3 Different Estates!  
**JB Robison Auctioneers (918) 256-5524**  
100's of Photos & More at JBRauctions.com!

**JBRauctions.com**

# MELTON AUCTION & REALTY LLC

Family Owned Business with over 45 years  
Combined Experience and the Best Personal  
Service for ALL your Auction & Real Estate needs!!

- REAL ESTATE
- FARMS
- BUSINESSES
- PERSONAL PROPERTY



meltonauctionrealty.com

Licensed MO & AR  
417-830-0153

HAVING A garage sale or rummage sale? Call us for special pricing. 417-624-4100.

BE AN EARLY BIRD! Place your ads before Monday and beat the rush!

BIG NICKEL ads sell! Call for more information and specials. 417-624-4100

**LIVING ESTATE AUCTION • SATURDAY, OCTOBER 29, 2022 8:00 A.M. LOCATION:** 193 East Dora Street, Verona, MO. Take Bus. Hwy. 60 into Verona, take P Hwy. into town past Park, west on P (3rd St.) to Dora Street then east to sale. Breakfast, lunch & rest rooms available • Reason for sale, sold property • Parking in field. Most of sale held under cover in case of rain. **TRUCK • TRACTORS • ANTIQUE WAGON FUEL TANKS • TOOLS:** 1982 Ford diesel 7000 dump truck with 3208 Cat motor, 10 speed transmission and 13 ft dump bed, runs • Farmall Cub tractor with plow, belly mower, cultivator, blade converted to 12 bolt • John Deere 40 tractor disassembled to be restored • antique horse drawn old hickory wagon with spring seat, nice old wagon • 2 old wagon axles • approximately 6 sets of old harnesses with a barrel full of parts • 2 real nice fuel tanks; 500 gallon gas tank and 2,000 gallon diesel; both with electric pumps with built on stands • Tomy lift for 1 ton truck • Bush hog brand 3 pt post hole digger with 12" auger • 3 pt 8 ft landscape blade with wheels • 2 3 pt bale spikes • 3 pt sub soiler • Hyd gravel spreader for dump truck • 5 ft 3 pt box blade • ripper tooth for backhoe • alum. in bed combo fuel tank and tool box • pickup metal tool box • goose neck ball hitch plate for pickup • adjustable asphalt cutter for backhoe • jin pole for loader bucket • 300 gallon poly tank • 525 gal. poly tank • 15 gallon 12 volt spray tank • 2 24" x 30" x 24" metal tanks with barrel pumps • antique horse drawn road grader • round bale feeder • cattle mineral feed trough • 65 gal plastic water tank with heater and filler hose • 85 gal plastic water tank • horse hay feeder • electric fence supplies • few T steel fence posts • 20 ft 5" cast iron pipe 16" • 2 pieces steel pipe 21 ft 4" x 8" • 15 ft 2" x 8" steel pipe • railroad iron 14 ft 3" long • 14 ft x 15" plastic culvert • MTV 20 ton log splitter • 1 hole ritchee stock water never used • 3 farm gates • cyclone leaf and grass rake • assorted size and lengths of septic hose, suction hose • Case 12" backhoe bucket • Case 36" backhoe bucket • 25" backhoe bucket • 36" home made backhoe bucket • horse turning plow • large pipe rack full of plastic pipe all sizes and lengths • 7 ft 2" wide A frame, 7 ft 5" tall • several stacks of cherry and walnut lumber • old metal Fina gas sign • Standard Oil drum • 2 rolls construction fence • pair of used 19.5" x 24 backhoe tires • 24" and 12" Tuff tight septic tank riser lids • 100 lb propane bottle • 12 ft aluminum extension ladder • new septic tank drain line covers • landscape blocks • **Note to see complete list go to web page Mr. Prueente ran a backhoe business for many years and has a shop full of good toolc and supplies, note the start time and plan on spending the day with us. SALE PROCEDURE:** Sale starts with POWER AND HAND TOOLS • SHOP SUPPLIES COLLECTIBLES with truck and tractors and antique wagon at noon. **TERMS:** CASH or good CHECK Not Responsible for Loss or Accidents Positive Picture I.D. Required Statements Sale Day Take Precedence Over Printed Material  
**MATT PRUEENTE, OWNER** McKNIGHT AUCTION COMPANY, LLC.  
Ralph McKnight • Dwight Crume Verona, MO • (417) 498-6662 • (417) 354-2925 • www.mcknightauctionco.com

## BUILDING SUPPLY AUCTION SATURDAY, Oct 29th • 9:30 am 2404 Cleveland • Baxter Springs, KS Corner of 24th & Cleveland, 3 blocks E of 69A on 24th St SALE HELD INSIDE REGARDLESS OF WEATHER

**DIMENSIONAL LUMBER** ◊ PINE – 1x6 V-Match T&G, bead board & shiplap ◊ **DECKING** – ALASKAN CEDAR 5/4" radius edge in 8', 10', 12', 16' lengths; as well as **Composite Decking** – multiple colors, new selection ◊ **WESTERN CEDAR** – 1x8 beveled lap siding ◊ **TEXTURED SIDING** – 4x8 sheets – used for board and batt or soffit ◊ **INSULATION SHEATHING WITH SHIPLAP EDGE** – in various thicknesses & sheet sizes – foil on one side/tar paper on the other ◊ 1/2" **PLYWOOD** – select grade ◊ **BACKER BOARD** ◊ **CULTURED STONE** – nice selection of colors & styles ◊ **VINYL SIDING** – CertainTeed Brand – several colors ◊ **JAMES HARDY SIDING** – 6 1/4" wide, - A Grade – Warranty ◊ **PREFINISHED FIBER CEMENT SHAKE SIDING** ◊ **SM@RT LAP SIDING** – 3/8"x8"x16' and **SM@RT SIDE SOFFIT** – 3/8"x12"x16' ◊ **SMART SHAKE SIDING** ◊ **ICE AND WATER SHIELD** ◊ **CLAY ROOF TILES** ◊ **HOUSE WRAP** ◊ **MINI SPLIT AIR CONDITIONERS/HEAT PUMP** – 12K BTU – Indoor Units ◊ **BARN WOOD DOOR** – real wood ◊ **INSULATION** – R13, R19, R21 batts; 5' and 6' wide rolls of r10 – r11 – r-13 insulation ◊ **HOT WATER HEATERS** – new in box – electric and limited # of gas – 30, 50 and 80 gallon ◊ **PULLDOWN KITCHEN FAUCETS** ◊ **NEW DELTA, MOEN AND HOME IMPRESSION FAUCETS:** Vanity and Kitchen (NIB) – large selection to choose from ◊ **APPLIANCES** – NEW – as well as Shelf Pulls and Scratch and Dent ◊ **WIRE CLOSET SHELVING** ◊ **NEW LARGE SELECTION OF LIGHTING:** large variety of nice lighting fixtures – including some high end lighting ◊ **VINYL WINDOWS** – New – JELDWEN – new construction – vinyl insulated windows ◊ **KITCHEN CABINETS** – Multiple sets of cabinets – option of stained or painted including: Farmhouse Brown, AND Shaker Style in Dark Gray, Light Gray and White – all wood – prefinished cabinets. Straight and L shaped sets with some also including pantry. Some sets include soft close doors & dovetailed drawers. ◊ **VANITIES** - nice selection of vanities including matching vanities for Farmhouse Brown, Dark Gray, Light Gray and White Cabinets – including 5' and 6' some with granite tops ◊ **PORCELAIN AND CERAMIC TILE** – over 20,000 sq ft, with great selection of sizes and colors of tile to choose from ◊ **MOSAIC TILE** – Fantastic selection of mosaics ◊ **TRAVERTINE** – marble – tile – stone including Subway Tile ◊ **Wood Look Tile** – nice selection of styles and colors in various lengths and widths ◊ **HARDWOOD FLOORING** – Including: **PREFINISHED HARDWOOD FLOORING** – 3/4" solid prefinished hardwood flooring ◊ **6-7" WIDE PREFINISHED PLANT WOOD FLOORING** – hand scraped, wire brush ◊ **SNAP AND LOCK LAMINATE** – small lots - ~550 sq ft and less ◊ **LVT** – over 20,000 sq ft of luxury vinyl tile – wood plank – snap lock and glue down, great selection of colors ◊ **EXTERIOR DOOR UNITS** ◊ **INTERIOR DOOR UNITS AND SLABS** ◊ **TRIM – BASE – CASING – CROWN:** Pre-primed – various widths and lengths, finger joint PINE, OAK: as well as OAK quarter round, corners, chair rail, cove, base shoe and door stop ◊ **STAIRCASE HANDRAILS** – in Oak and Poplar ◊ **ENTRY – PASSAGE – PRIVACY DOOR KNOBS AND LOCKS** ◊ **QUARTZ** – Maple White in various sizes – countertops – island panels, with and w/o sink cutouts, 3 cm quartz ◊ **VANITY TOPS** – available in Quartz, Marble and Travertine – includes undermount, overmount and vessel style tops (some Glass) ◊ **GRANITE** – new selection in large variety of colors ◊ **KITCHEN SINKS** – SS – Composite – varying styles and colors ◊ **BATHTUBS** ◊ **CEILING FANS** – nice selection ◊ **TOILETS** ◊ **PEDESTAL SINKS** ◊ **TOWEL BARS AND RINGS, TOILET PAPER HOLDERS, ROBE HOOKS, TOOTHBRUSH HOLDERS** ◊◊◊ Scheduled to Arrive – Architectural Shingles

## COME FOR THE DAY AND SAVE LOTS AND LOTS OF \$ MT. VERNON AUCTION CENTER

• No Buyer's Premium •

MORE COMING IN DAILY - check sites often

For pictures see Mt. Vernon Auction Company on Auctionzip.com (enter ID#29728 at bottom of page) or Facebook  
CELL 870-754-4428 • 870-715-5479 • 870-715-2326 (text only)

All items must be picked up day of sale or during one of our posted, scheduled, and announced pick up times following the auction. Thank you!

All announcements made the day of auction will supersede previous advertising.

### Auction Sales

43 SELF STORAGE, 5436 Highway 43, Joplin, Missouri will sell the following units due to non payment:  
Trista Reeves K 02,  
Charles King E11,  
Bridget Gibson B20,  
Carrie Edwards H03,  
Jeffrie Fries L 03  
Crystal Esterline K01 & B04 at a sealed bid auction on November 9, 2022 between the hours of 10:00-1:00.

**MOVING SALE**  
1817 E. 18th  
JOPLIN, MO  
Friday & Saturday  
Oct. 28th & 29th,  
8am-3pm

Corner of 18th St. & Connecticut Ave.  
Beautiful queen size sleigh bed; queen size mattress, matching bed-side tables; matching medium size armoire with 4 drawers; hisery cabinet; really nice accent tables; storage cabinet (beautiful wood) for kitchen, bathroom or bedroom. Kitchen armoire for pantry or storage; bookcase; cute settee; huge selection of "Temptations" dinnerware; some pretty crystal, many gift items. (Nice) small appliances; great home decorations; desk; 3 stainless steel storage utility shelving; binoculars; many Beatles CD's (new); Michael Jackson CD's 9 (many new); Barbie dolls in boxes, never opened (Marilyn Monroe, Elvis, I Love Lucy); Antique toy metal car (with trailer), 2 carpet cleaning machines; nice kitchen storage containers; some cast iron- "griddle, skillet, etc."; purses; belts; designer shoes (lots of them really nice); really nice clothing (A LOT)! Beautiful faux fur coats; fun jackets; really nice (some brand new, some vintage Christmas decor items; nice patio furniture. Please note many items added after this ad went to press.

Need a Sale? Call Us!  
Sale Prepared by  
"Just Get Organized!"  
Suzanne 417-825-7003

**15 WORDS \$11.75**  
**- CALL THE BIG NICKEL TODAY AT 417-624-4100!!**

## LOCAL MATTERS.

Please support the proud advertisers that power your community paper.



NEWSPAPERS  
MATTER  
NOW MORE THAN EVER

# PUBLIC AUCTION

## SATURDAY OCT 29<sup>TH</sup>, 10:00 AM

### BILL AND JOYCE LOFTIN RETIREMENT

LOCATION: 811 W 90TH WAGONER, OK 74467

5 MILES SOUTH OF WAGONER ON 16 HWY; 3 MILES NORTH OF OKAY, OK

• 2018 JD 5115 R TRACTOR W/540R LOADER, 4X4, C/A, COMMAND 8 TRANS, 576 HRS \* 2012 FORD F350 TRUCK, GAS, 6.2, AUTO, 135K MILES, 4x4, 1500LB 3C FEEDER, BESLER BALE BED \* LAMAR 16' GN TRAILER, STEEL FLOOR & SIDES \* CASE IH 265 OFFSET TRACTOR, DIESEL, 3PT \* IH 274 OFFSET TRACTOR, RED STRIPE, DIESEL, 3PT \* 1981 JEEP SCRAMBLER, 4X4 \* JD 740 SELF LEVELING LOADER, 7000 SERIES \* 2012 POLARIS RANGER CREW CAB, 382 HRS, 4X4 \* WYLIE 500 GALLON SPRAYER \* DANUSER POST DRIVER \* 300 GALLON OVERHEAD FUEL TANK \* FARMHAND 13' HD 6 WAY DOZER BLADE FOR SKID STEER \* CM 41 CULTIPACKER, 15' \* NOBLE HARROW, ALL DUAL, 13' \* 19' FIELD CULTIVATOR WITH HARROWS \* 10' 3PT DISC \* NH 256 HAY RAKE \* MF 4 BASKET HAY TEDDER \* JD 3PT 3 BOTTOM PLOW \* WOODS 5' BRUSH HOG, 3PT \* JD R MANURE SPREADER \* SNYDER 1000 HYDRAULIC PUMP, 40' BOOM \* LEGEND 2615 TRI FOLD BRUSH HOG, 15', HD \* NECK OVER 8000LBS 16' CREEP FEEDER W/CREEP PANELS \* TARGET 25' GN FB TRAILER, 2 K LB AXELS, 20+5, CENTER POP UP \* GN FB 24' TRAILER, 2 7K LB AXELS \* 140 BUSHEL FEED BUGGY \* AMERICAN STRAIGHT NEEDLE LEATHER HARNESS SEWING MACHINE \* PILGRIM SHOE REPAIR SEWING MACHINE \* LOTS OF HARNESS AND TACK \* SPRING BUGGY WAGON SEATS \* PELLET STOVE \* OTHER ITEMS TOO NUMEROUS TO MENTION \* (31) 5x6 BERMUDA HAY, SPRAYED AND FERTILIZED, NET; (9) 4x5 BERMUDA HAY, SPRAYED AND FERTILIZED, NET

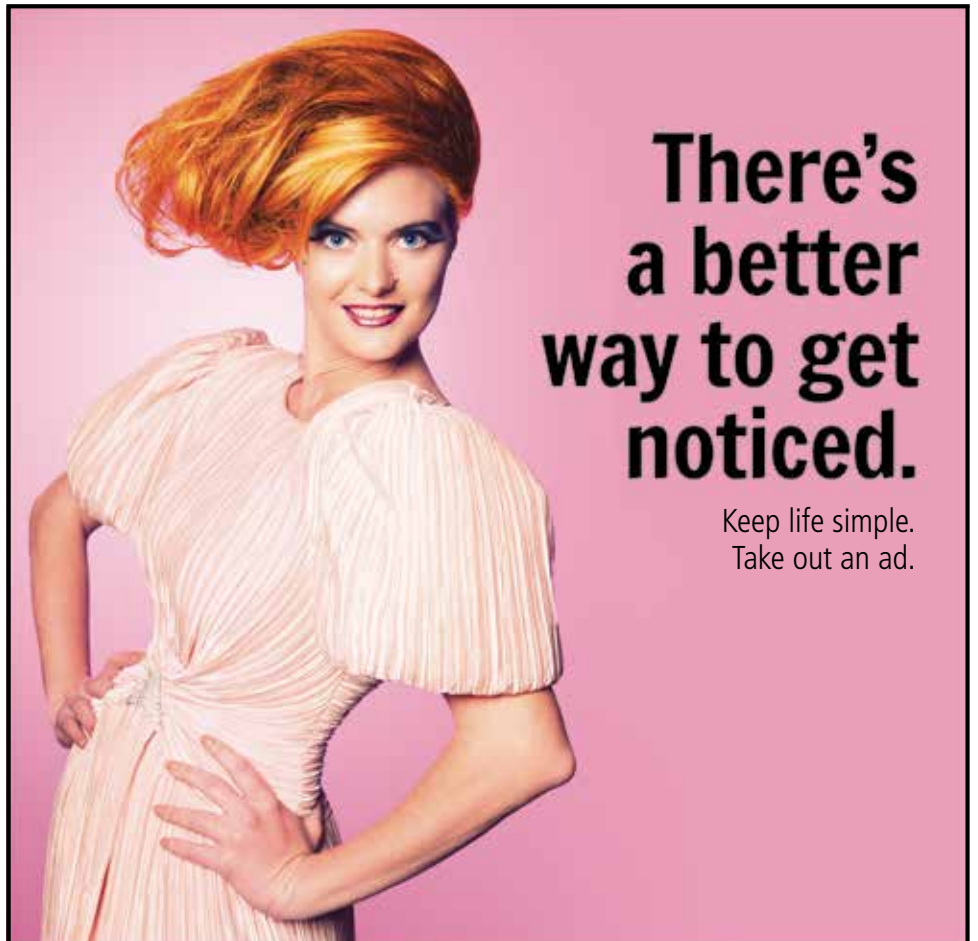
A copy of your Oklahoma Sales Tax permit is required on file or sales tax will be charged. Not responsible for accidents. TERMS: Cash, Check, AE, Visa, MC & Discover. There is a 3% fee on credit card purchases ONLY. Previewing all week

## WWW.RosenfeltAuctions.COM

### MIKE ROSENFELT - AUCTIONEER

405-205-5978 or 405-659-8998

## AUCTION SALES



# There's a better way to get noticed.

Keep life simple. Take out an ad.

## ESTATE AUCTION

Saturday October 29th, 2022 • 10:00 AM

Located at 26841 Hawthorne Road

Carl Junction, MO 64834

**TRACTOR:** Kubota Diesel G5200 HST Lawn & Garden Tractor, 1,544 Hrs. Won't Start. Ran good then just would not start;

**HOUSEHOLD:** Amana Side by Side Refrigerator w/Water & Ice In Door; Dining Table w/ Chairs & Matching Hutch; Vizio 32" Flat Screen TV; Vizio HDMI 1080P 36"; DVD Magnavox 4 Head VCR; Matching Sofa & Love Seat; Queen Style wing Back Chair; (2) Curved Glass China Cabinets; Nice Dining Table w/Cane Back Chairs; Lots & Lots of Nice Wall Pictures & Mirrors; Nice Large Cedar Chest; Nice Upright Jewelry Cabinet; Thomasville Bedroom Furniture Chest & Mirrored Dresser; Lots & Lots of Costume Jewelry; Small Roll Top Desk; 6 Drawer Mirrored Dresser; Full Size Bookcase Headboard Bed; Bissell Turbo Sweeper; Nice Office Desk, Computer & Printer; 3 pc. Maple Bedroom Full Size Set; Platform Rocker; Nice Bedding & Linens; Lots of Nice Clean Collectible Glassware & Whatknots; Precious Moments Figurines; Amana Electric Dryer (White); Whirlpool Washer (White); Lots & Lots of Good Everyday Dishes, Pots & Pans; Bottle Water Dispenser; (2) Metal Patio Tables & Chairs; Yard Swing; Brunswick Pool Table, Made in 1927, Heavy Slate Table; Lots of Misc. Camping & Fishing Gear; 110 Volt Air Compressor; Woodworking Tools & Misc. Shop Tools; Hand & Garden Tools; Antique Old Hardware Store Seed Cabinet or Storage Display Cabinet; Nice Patio Table w/Chairs; Wicker Patio Set; Concrete Bird Bath & Yard Decorations.

**LOTS & LOTS OF BASEBALL CARDS:** Bobble Head Players & Some Autographed Cards and other Sports Cards & Etc. GREAT SHAPE!! 1990's to Early 2000's & Photograph w/Signatures

Nothing removed Until Settled For, Not Responsible for accidents. Theft or Brokerage Terms: Cash or good Check with proper ID

[www.columbusauctionbarn.com](http://www.columbusauctionbarn.com)

Check our website for photos & upcoming auctions.

**ESTATE OF BARBARA BOBBYE RUSSELL AUCTIONEERS**

**JACK GARNER** Delbert Rowden  
417-438-0468 620-762-2416

**MIKE TORCHIA**



### SOUTHWEST AUCTION SERVICE

Liquidation Estate Auction!

Office: 417-652-7540 Website: [www.swaauction.com](http://www.swaauction.com)

DATE OF AUCTION: Sunday October 30th 2022

Starting Time: 10:00 AM Rain or Shine!

Location: 8244 FR 2062 Purdy MO 65734



Guns Sell @ 1:30 Sharp!

Large Farm Equipment Sells @ Noon!

#### AUCTIONEER'S STATEMENT:

Auction of living estate of Margie and Richard Redshaw with the passing of Richard, Margie has decided to liquidate everything. Margie and Richard have been a life long resident of Barry County. Everything in this auction is nice and very well taken care of. Margie and Richard's son, Scotty has decided to sell all of the guns and ammo. Don't miss out on this opportunity with great farm equipment, household items and guns. Thank you from the Southwest Auction Family!

#### DIRECTIONS TO AUCTION:

FROM WHEATON, MO: Turn right onto State Hwy 86 W/N Gilman Ave, Turn right onto State Hwy 97 N, Continue onto State Hwy B, Turn left onto State Hwy 37 N, Turn right onto FR 2062, House on turn left.

FROM CASSVILLE, MO: Head N on State Hwy 37, Turn right onto FR 2062 House on the left.

FROM MONETT, MO: State Hwy 37 S/N Lincoln Ave, Turn left onto FR 2062

FROM NEOSHO, MO: Take State Hwy 86 E to State Hwy B in Corsicana Township, Turn right onto Hamilton St, Turn left onto State Hwy 86 E/McKinney St, Turn right onto State Hwy 86 E, Turn left onto State Hwy 37 N, Follow FR 2062 House on the left.

#### Farm Equipment:

50 Round Bales, Liquid Fertilizer Tanks (2500GAL, 2000GAL, 2-1300GAL), Grain Bins, Manure Spreader, Plow, Square Bale Hay Elevator 20ft, Bale Unroller, (Like New) Trip Hopper Range Feeder Model P-836, Massey Ferguson Square Baler Model 124, New Holland 680 Manure Spreader (Good Condition), 32 ft. Spring Tooth, 516 John Deere Plow 5 Bottom, 16ft. Allis Disc, 10ft. Roller, Rock Rake (New), Model 155 Scraper Blade (Like New), Woods HBL 96-2 Scraper Blade (Like New), Allis Sycle Mower, Allis 3 Bottom Plow, David Bradley 11ft. Hay Rake (Older), 20 Ft. Odgen 3pt. Field Drag, 20 Ft. Kewamee Field Disk Model 1020, Ral Road Iron Field Drag, 72 Allis Hookup Pulltype Combine

#### Trailers and Motorcycle:

'08 Yamaha Raider Custom Motorcycle (5,688 Miles) '07 Yamaha Rhino Side By Side, 1995 Trailer 18ft. Combination Stock/Flatbed

#### Guns:

Dan Wesson 45 Stainless Heirloom (Never Shot), CZ 45th Anniversary 9MM (New Never Shot), Colt King Cobra 357 Stainless (Never Shot), Colt Gold Cup Trophy Edition 9MM (Never Shot), Springfield Arms Ronin 9MM (Never Shot), Taurus 357 Magnum, Ruger 10MM Stainless (Never Shot), Springfield Arm XD 9MM, Old Single Shot 22, Hawes 57 Western Marshal, Remington 243 Vortex Scope (New Never Shot), \*Ruger American 7MM-08 (New Never Shot), TC Compass 6.5 Creedmoor (New), Mossberg 817.17 HMR (New), Remington 870 20 Gauge (New), TC Pro Hunter 243 & 50 Cal Mussel Loader (New), Yildiz O/U 20 Gauge (Used), Stoger Condor 12 Gauge 3in. (New), 6.5 Carcano, \* Sears and Roebuck 12 Gauge Automatic Shotgun Model 66, Champion 410 Shotgun, Colt Trooper, Remington 22 Model 550-1, Ruger 380LCP, Taurus Made in Brazil, .44 Mag., Kimber Rapide 10MM, Mac 90 Sporter, Maddi 7.62X39 Semi Automatic, Remington Wingmaster 12 Gauge, Thompson Center Arms 22, Golden Boy Henry 22\*

#### Ammo:

Full Box of 50 357 Magtech, 2 Boxes Remington 380, Box of 78- 380 Auto Winchester, Box of 44- 380 Auto PMC, Box of 40- 380 Auto UMC, Box of 50- 380 Auto, 3 Full boxes of 20 Hornsby 10MM, 4 Boxes of Winchester 10MM, 2- Boxes 10MM Auto Blazer, 2- Full Boxes of Hornady 243, Box 20 Federal 243, Box of Federal 308, Box of 308 Winchester, 2-Boxes of Remington 20 Gauge Shells, 4-Boxes of 22 Long Rifle 325 Federal, Box of 500 rounds 22 Long Rifle Remington, 4-Boes of Remington 22 Long, 2 Boxes of Winchester 22 Long, Assorted 22 Lon Rifle, 2-Full Boxes of Remington 223, Box of American Eagle 223, 15-Boxes of American Eagle 5.56, Box of 32 Auto, Box of Remington 25 Auto, Box of 25 Auto UMC, Box of Winchester 30.06, Remington 270, Remington 410, Box of 410 Winchester, 22 and 22 Mag Ammo, 7 Mag, 25-06, 270, 308-338 Rem Ultra Mag, 300 Weatherly Mag, Muzzle Loader Powder Primers & Projectiles, Assorted 20 Gauge Ammo, Assorted 12 Gauge Ammo and much more.....

#### Other Items:

Leupold Scope Rings (New), 30-06 RCBS, 100 New Hornady 204 Brass, 6.5 Creed Brass, 1000r 223 Brass, 25-06 Brass, 6.5X52 Brass, 1000 9MM Brass, 6MM Brass, 40.40 Auto Brass, 300 Win Mag Brass, 10MM Brass, 338 Win Mag Brass, 7 Mag Brass, 41 Remington Mag Brass, Stripper Clips-Assorted Rifle Brass, Gun Locks, Re-loading Dies, Remington 700 Triggers, Gun Holsters, Primers Shot Shells Large Rifle and Large Pistol, Small Rifle, Mixed Pistol 44 Mag/25 Auto/243WSSM,

#### Household Items and Sporting Goods:

Cookware, Antique Furniture, Dishes, Cedar Log Bar Stools, Sewing Machine Base Hall Table, Split Bottom School Desk (Antique), Coke Cooler, Antique (Non-Working), Air Mattresses, Propane and Charcoal Grills, 75 Gal. Curved Front Aquarium, Holiday Décor, Medical Encyclopedias, Misc. Books, Old Records 8 Track Tapes CD's, DVD's, Hats, Dog/Children Gates, Home Décor, Boxes of Truck Towing Mirrors, Canning Jars, and Misc. Household. Construction Material, Household Furniture, Computer Desks, Kitchen Table.



#### Terms of the Auction:

We accept Cash, Good Checks w/ proper ID & Credit Card (5% Convenience Fee) We are not responsible for accidents to man, woman, child or animal. We are not responsible for lost, stolen, or damaged articles or property! All accounts must be settled prior to removal of auction item! Statements made day of auction take precedence over all printed materials! For more pictures visit our website at [www.swaauction.com](http://www.swaauction.com)



# ESTATE AUCTION

## ESTATE OF CHARLIE ALLEE

**Saturday, November 5, 2022 10:00 a.m.**

**900 N/W 70TH LANE LIBERAL MO. 64762**

**DIRECTIONS:** From Bronaugh Mo go South on 43 hwy to Barton County V hwy go East on V to 70th Lane go North on 70th Lane. 70th Lane will dead end at the property. (Call for Viewing)



**REAL ESTATE:** 3 bed, 1 Bath Log home, Wrap Around Porch on 12.7 acres Good fences. **TERMS AND CONDITIONS:** 10% of purchase price paid into escrow day of auction, remainder due at closing in certified funds 30 days or less

**TRACTOR AND EQUIPMENT:** 265 Massy Tractor (Diesel). 250# Creep Feeder. 2 - 3pt Hat spears. Small Sprayer (pull with lawn Mower). 8' 3 Pt. Blade. 4 Wheel Wagon. 6' 3 Pt. Bush Hog. 5' 3 Pt. Bush Hog. Dual all Front End Loader. 5' Box blade. 3 Pt. Post Hole Digger. 4 wheeler Seeder.

**HORSE RELATED ITEMS:** Shoeing Stocks. Tack Cabinet. Rope. Lot Horse Bits. Lot Halters Bridles (Draft and Horse sizes). Saddle Pads. Saddle Racks. Stirrups. Old Herford Saddle. Buck Stiner Saddle. Hess & Hopkins Saddle. Big Horn Saddle (Cochise Cutter). Beata Harness Quarter Horse Size). Horse Collars (all sizes). Neck Yokes. Harness Rings. Fly Nets. Horse Hoof Gauge. Saddle Bags.

**SHOP TOOLS:** Chain Hoist. Chain Boomers. Extension Cords. Appliance Doll.y

Jack Stands. 2 - Handy Man Jacks. Skill Saw. Several Hand Saws. Bench Grind-er. Several Tool Boxes. Cut Off Saw. 2 - Creepers. Sockets, Hand Wrenches. Hand Wrenches, Sockets. Crescent Wrenches - Pipe Wrenches. Bolt Cutters. Saber Saw. Shoop Heater. Extension Ladder. Bench Vice.

**TRUCK:** 2004 ford F 350 4 Door Automatic Transmission Diesel Motor 204,000 Miles.

**FENCING & FARM RELATED:** Several Wire Cattle Panels. Parshall Roll Smooth Barb Wire. Several Used T Posts. Chicken Wire. Fence Charger. Emascu-lators. 5 - 50 Gallon Plastic Barrels. Propane Bottles. Number 2 Wash Tub. Several Old Concrete Blocks. 2 - Rick of Wood. Stock Tank Heaters. Hay Hooks Milk Cans. Potato Fork. Carry All (Receiver Hitch). Garden Hose. Power Washer. Lot of Scrap.

**HOUSE HOLD & LAWN:** Micro Wave. Whirlpool; Refrigerator. Maytag Washer. Whirlpool Dryer. General Electric Electric Range. Kitchen Table & Chairs. Wall Pictures. Electric or Manual Hospital Bed. Recliner. Wooden Shelves. Smoker. Expert Charcoal Grill. Lawn chairs. Bird Feeders. Ice Chests. Recliner. What Knots. 22" Push Mower (Weed Eater Brand).

**ANTIQUES:** Old Kerosene Lamps. Hand Meat Grinder. Kerosene Lanterns. Wooden Trunk.

**HUNTING & FISHING:** Compound Bow and Case. Lot of Rods and Reals. Sev-eral Tackel Boxes.

See additional pictures and info at [www.tncnevada.com](http://www.tncnevada.com)

**Jay Wortman**  
Agent  
417-865-4724

**Cole Abele**  
Auctioneer  
417-684-0881

**Doug Wortman**  
Auctioneer  
417-448-9540

## TOWN & COUNTRY AUCTION SERVICE

1700 W. Austin, Nevada      Office - 417-667-2966

WE'VE GOT YOUR DREAM JOB ON A

## SILVER PLATTER

Keep up-to-date with dozens of job postings throughout your local area.  
Find the perfect permanent or temporary position in the classifieds!

**If You Want To Sell,  
We're The Ones To Tell!!**

**Jim Lievens**  
AUCTIONEER  
417-455-5311 • 417-434-4528 Mobile  
[www.circlelauction.com](http://www.circlelauction.com)

## ESTATE AUCTION

SATURDAY, OCTOBER 29TH, 2022 10:00 AM

**MR. & MRS. CARL & PEGGY JUDD**

**347 WEST CEDAR ST., GRANBY, MO**

668113jn

**Directions:** From 60 Hwy & B Hwy, Take B Hwy And Go To W Neosho St, Turn Left And Go To W Cedar St., Turn Right On W Cedar St., And Go To Sale On Left!!  
**WATCH FOR SIGNS!!!**

**STORAGE BUILDING, FOUR WHEELER & TRAILER:** 8 FT X 10 FT Storage Building, HONDA Four Trax 350 4X4 4Wheeler On 4FT X 8FT Flatbed Trailer.

**FURNITURE & APPLIANCES:** Porcelain Top, Kitchen Table, Hall Cabinet, Chest Of Drawers, Cherry End & Coffee Tables, HP Laptop, Wrought Iron Floor Lamp, Cherry King Size Bed, Large Flat Screen TV, Computer Desk, Oak Curio, Corner What Not Shelf, Oak Bookcase, TV Cabinet, Heavy Duty Auto Washer & Dryer, Bow Front Dresser, Cherry 2 Door Cabinet, Wrought Iron Wall Cabinet, Blanket Chest, Chifferobe, Leather Chair, Chest Deep Freeze, Wrought Iron Plant Stand, Stereo, Walnut Butterfly Mirror Vanity, Walnut Cannon Ball Bed, Dining Table W/Chairs, Oak Wardrobe (ANTIQU), Camel Back Trunk, Twin Maple Bed, Wood Folding Chairs, Metal Lawn Chairs, Sewing Cabinet, Portable Dishwasher, Oak Dining Table W/Pattern Back Chairs, Small Dinette W/2 Chairs, Microwave Cart, Mission Oak Glass Door China Hutch (ANTIQU), Sewing Machine & Cabinet, Single Door Storage Cabinet, Cherry Day Bed, Under Counter Refrig, Sewing Rocker, Love Seat Couch, Couch & Occasional Chair, Oak Wash Stand, Queen Bed, Waterfall Vanity & Chest, Cherry Knee Hole Desk, Victorian Stand Table, Sellers Kitchen Cabinet (ANTIQU), Victorian Stand Table, LaZBoy Recliner, Curio, Child's Rocking Chair, Trunk, LaZBoy Recliner, Highboy Dresser, Maple Vanity W/Mirror, Oak Slate Back Rocking Chair, Marble Top Wash Stand, VHS/DVD Combo, Walnut Highboy Dresser.

**TOOLS:** Bench Vise, Bamboo Fly Rod In Wood Case, Hammers, Hunting Knife, Wood Ammo Box, Ammo Boxes, Coleman Camp Stove, Golf Clubs, Drop Cords, Rods & Reels, Wood Step Ladders, Cannon Ball, Fishing Reels, Sinker Mold, Pocket Knives, Coleman Lantern, Drill Bits, Wood Wedges, Cclamps, Pitch Fork, Post Hole Digger, Bars, Shovels, Rakes, Hoes, Etc!, Sythe, Silage Fork, Screw Drivers, End Wrenches, Nips, Hand Saws, Come Along, Minnow Bucket, Minnow Trap, Bolt Cutters, Bench Grinder, Cane Poles, Push Plow, #8A & #4 Planes, Coaster Wagon, Wheel Barrow, 2 Wheel Yard Dump Trailer, Oxygen Bottle, Lead Ladle, Lead Pot, Chain Saw, Tow Rope, Sockets, Extensions, Power Tools, Saw Horses, Wood Ladder, Scaffolding, Sprinkling Can, Gun Hard Case, Floor Model Drill Press, Craftsman Table Saw, Planer Jointer, Vertical Belt Sander, Boat Oars.

**MISCELLANEOUS:** Old Violin & Case, Dulcimer, Linen, Bedding, 583 Precious Moments, BUDDY L Ride On Truck, Granite Ware, Pressure Cooker, Copper Pans, Collector Plates, Galv. Wash Tub, Cots, Adv. Wood Box, Rotary Telephone, Horse Shoes, Books, Chicken Wire, Small Appliance, Green Ball Jars, Rolling Pins, Alum Pitcher, Kitchen Utensils, Silverware, Hen On Nest, Crock Jar, Old Bottles (Pop & Others), Oil Lamps, Large Spoon Collection, Antlers, Shampooer, Ruby Red, Yard Figurines, Corning Ware, Set Of China, Pink & Green Depression, Cast Iron BABE RUTH Bank, Home Interior.

ID required for bidder number - Not responsible for accidents - Lunch - Terms Cash/Visa/MC/Discover - Preview by Appointment

# LIVING ESTATE AUCTION

**Saturday Nov. 5th at 10:00 am**  
**559 Weeks Ave Asbury, MO**

**Real Estate** (2 Bed, 1 Bath & detached garage on 2 city lots), Guns, Motorcycle, 4-wheeler, car, furniture, tools & much more.

Visit [www.andersonauctionllc.com](http://www.andersonauctionllc.com) for more information.

**Lance Anderson, Auctioneer**  
**620-215-6864**

Advertise your Flea Market or Antique Store in the Antique & Flea Market Directory. Call Billie for more information and special pricing. **417-624-4100.**

Need something? Let us help you. You can advertise that you are looking for a special item. Call **417-624-4100** for more information.

## TC AUCTION

**Specializing in farm sales,  
estate sales and guns.**

**Now booking sales for the  
Fall/Winter Season.**

Marcus Thogmartin  
417-850-3535  
Diamond, MO

**TC AUCTION SERVICE**

Corey Carsten  
417-839-6806  
Clever, MO  
666191ch

## ESTATE AUCTION

**Saturday October 29th, 2022 at 9:00 A.M. &  
Sunday October 30th, 2022 at 10:00 A.M.**

**Auction Will Be Held the Farm 1834 N High School Ave,  
Columbus, Kansas 66725. One Mile North of The Columbus  
Dollar General Store.**

**Selling Personal Property, Tools,  
Equipment, Collectibles & Miscellaneous:**

**Dirt Bikes:** 1984 600R Honda, 250 Yamaha,  
**Vehicles:** 1991 Ford Econoline Van  
**Equipment:** Husqavarna rear tine tiller, Yard Man Chipper Shredder, Weedeaters, Pole Saws, Chain Saws, Water/Trash Pump, 3Pt Spreader, Yard Roller, Box Blade, Rock Rake, Angle Blade, Spring Tooth Cultivator, Garden Planter, Walking Plow, Heavy triple axel equipment trailer pintle hitch, Miller Welder on Welding Trailer, Portable Air Compressor, Overhead Fuel Tank, Hydraulic Lift on Trailer, Cutting Torch and Bottles, Grinders, Anvil, Engine Hoist, Shop Heater, Ford Loader Tractor w/ Backhoe, Ditch Witch, Old Military Boom Truck, 1968 F600 Ford Dump Truck

**Lots of Tools:** Hand Tools, Long Handle Tools, Power Tools, Air Compressor, Shop fan, Air Tank, Floor Jacks, Bottle Jacks, Log Chains, Vise, Anvil, Torch with Bottles and Gauges, Chain Saws  
**Primitives:** Old Pedal Grinding Stone, Old Shop Lights  
**Miscellaneous:** Lots & Lots of Miscellaneous, Equipment Parts, Tons of Scrap Metal, Old Primitive items you would find in a shop. Lots of old heavy Iron, Clevis, Nuts, Bolts, Metal, Pipe, Barrels

**Auctioneers Note:** Jim was in the construction and landfill business for many years. He retired in 1994 and never got rid of anything. Come out for a full two days of auction in what will be the first weekend of a multi day sale at the home site. Many will remember we started on this estate 2 years ago when we sold out his Scammon Shop and Business Location. These two days of auction will be tools and stuff from sheds, garage and outside items. Large Equipment will sell on Saturday.

**Refreshments and Bathroom Provided.**

**TERMS:** Cash or Good Check with Proper ID. Nothing removed until settled for. Not responsible for accidents, Theft or Breakage.

**Estate of Jim & Collette Burgan**

**AUCTIONEERS:**  
**David Holmes 620-674-2183 • Lance Anderson 620-215-6864**  
[www.davidholmesauctions.com](http://www.davidholmesauctions.com)  
**Clerks:** Ron Holmes, Laura Holmes &, Donna Westervelt

668051jn

**PUBLIC AUCTION**

**ANTIQUES & COLLECTIBLES**

**SATURDAY, OCTOBER 29, 2022 \* 9:00 AM**

**\*WOODEN BABY CRADLE- CEDAR CHEST- CAST IRON- GRANITE WARE-CORNING- PYREX- FIRE KING- JEWEL T- BOOKS- FEATHERWEIGHT SEWING MCH.- BROTHER SEWING MCH.- QUILTING FABRIC & MISC. \* VAST COLLECTION OF GOOD QUALITY ANTIQUES & PRIMITIVES\***

**LOCATION:** \*Fairview Community Building; 110 West Main Street; Fairview, Mo. **DIRECTIONS:** From Hwy. 86 & T hwy. (Pioneer Ave.) near the Dollar General - take T hwy. (Pioneer Ave.) to Main St.- right on Main to auction. Watch for "HOLDER AUCTION" signs! For terms, pictures & complete listing go to AuctionZip.com ID 35501.

**HOLDERS AUCTION SERVICE**

**Butterfield, Missouri**

**Clifton Wells \* Brad Holder \* Jeff Holder**  
**417-342-2727 \* 417-689-5582 \* 417-342-3218**

# Real Estate Auction

Monday, November 14, 2022

STARTS at 10:01am

FOR INFO & ONLINE BIDDING: [www.chuppsauction.com](http://www.chuppsauction.com)

LOCATION: CLAREMORE CONFERENCE CENTER  
1400 W. Country Club Drive • Claremore, OK

**ONSITE and ONLINE BIDDING!**

**1,253 ACRES** selling in **15 PARCELS!**

- |   |               |  |                  |
|---|---------------|--|------------------|
| #1: 8161 E 4230 Rd - Chelsea, OK 74016<br>Pasture, fenced & cross fenced, ponds, scattered trees, corn, barns & 3/2 Home, needs repairs.                        | 80 Acres +/-  | #9: 4210 Rd<br>Pasture, partially fenced, ponds, loafing shed w/ corn, water tap, scattered trees and partially wooded.                          | 100 Acres +/-    |
| #2: 4220 & 380 Rd<br>Hay meadow, pond, fenced & cross fenced.   | 40 Acres +/-  | #10: 4210 Rd<br>Wooded land, partially fenced, ponds with lots of hunting and wildlife.  | 30 Acres +/-     |
| #3: Busyhead Arena - 4220 Rd<br>Large roping arena, WW Corral & Chute, 2 sheds and old Homestead. Pasture, ponds, fenced & cross fenced, includes 2 water taps. | 182 Acres +/- | #11: 4210 Rd<br>Hay meadow, fenced, ponds, scattered trees and woods.  | 40 Acres +/-     |
| #4: 370 Rd<br>Fenced pasture w/ pond.   | 70 Acres +/-  | #12: Corner of 4210 & 380 Rd<br>Pasture, partially fenced, wet weather creeks, ponds, scattered trees & woods. Site of 1st Oil Well in Oklahoma. | 122.43 Acres +/- |
| #5: 4220 Rd<br>Wooded land, lots of hunting and wildlife.   | 60 Acres +/-  | #13: E 350 Rd<br>Wooded land with creek.   | 41.8 Acres +/-   |
| #6: 4220 Rd<br>Wooded land, lots of hunting and wildlife, coal pits.  | 170 Acres +/- | #14: Corner of E 350 & 4220 Rd<br>Pasture, fenced & cross fenced, ponds & scattered trees. Previously strip mined, now pushed in.                | 80 Acres +/-     |
| #7: Corner of E370 & 4210 Rd<br>Pasture, partially fenced, ponds, wet weather creeks, scattered trees and partially wooded.                                     | 157 Acres +/- | #15: 4220 Rd<br>Wooded land, partially fenced with creek. Previously strip mined, now pushed in.   | 70 Acres +/-     |
| #8: 4210 Rd<br>Pasture with mature trees, partially fenced.   | 10 Acres +/-  |  |                  |



REGISTER at [CHUPPSAUCTION.COM](http://CHUPPSAUCTION.COM) for ONLINE BIDDING

**TERMS:**  
 • 35 Days from any all parcels to be sold to the highest bidder.  
 • 10% down payment on all parcels. (Cash or check or money order).  
 • 20% down payment on parcels with mortgages. (Cash or check or money order).  
 • 10% down payment on parcels with mortgages. (Cash or check or money order).  
 • 10% down payment on parcels with mortgages. (Cash or check or money order).  
 • For complete terms and conditions visit [www.chuppsauction.com](http://www.chuppsauction.com)

**DALE & MARIA CHUPP** Coldwell Banker Neokla Select (918) 630-0495

## CHUPPS AUCTION & REAL ESTATE

Stan Chupp  
(918) 638-1157

Dale Chupp, Realtor  
Coldwell Banker Neokla Select  
(918) 630-0495

Jonathan Miller  
(918) 237-7582

## PUBLIC AUCTION

STARTS @ 9:37 AM



## AUCTION

Tuesday, November 1, 2022

Address: 122 W. Aquarium Place • Jenks, OK

Directions: In Jenks, OK @ the junction of Creek Turnpike & Peoria/Elm Exit, Take Peoria Ave north 3/10 mi to Aquarium Place. Turn Right (E). Go 4/10 mi to Auction Site.

For More Info & Pictures  
[www.chuppsauction.com](http://www.chuppsauction.com)

**100' x 100' METAL BUILDING, HEAVY DUTY TRUCKS, TRACTOR W/ SIDE MOWER, DUMP TRUCK, TOYOTA PRIUS, TRAILER MOUNTED PUMP, TRAILERS, BRUSH HOGS, MOWERS, VACUUM TRUCK, FORKLIFT, STREET SWEEPER, WATER TRUCK, GUN RACKS, COMPUTER RACKS, GUN CLIPS, PACKERS, FIRE FIGHTER EQUIPMENT, POLICE EQUIPMENT, STREET SIGNS, COMPUTERS, TRAFFIC COUNTERS, POLICE CONFISCATED PROPERTY, PALLET RACKS and SHELVING, TRUCK BED TOOL BOXES, 2-POINT TRUCK LIFT, VEHICLE PARTS, RADIO TOWER, TOOLS, TVs, OFFICE FURNITURE and EQUIPMENT**

RUNNING 1-2 RINGS ALL DAY!

AUCTION STARTS @ 9:37 AM - LIVE ONSITE & ONLINE BIDDING ON LOTS 1-28 START @ 11:01AM

OWNER: City of Jenks

**Auctioneer's Note:** The City of Jenks is selling surplus from their various departments. YOU CAN VIEW ALL ITEMS @ 7:00 AM ON THE DAY OF THE AUCTION. ALL ITEMS must be removed the day of the auction by 4:00 PM. Loader available auction day ONLY. Additional items will be added up to the day of the auction. DON'T MISS THIS AUCTION! Follow us on Facebook for updates or visit our website for pictures at [www.chuppsauction.com](http://www.chuppsauction.com)

TERMS: Cash - Credit Cards - Check with Proper ID - OK Sales Tax Applies unless exemption is shown. NOT RESPONSIBLE FOR ACCIDENTS. ANY ANNOUNCEMENTS DAY OF SALE SUPERSEDES PREVIOUS ADVERTISING.

## CHUPPS AUCTION & REAL ESTATE

Stan Chupp  
(918) 638-1157

Dale Chupp, Realtor  
Coldwell Banker Neokla Select  
(918) 630-0495

Jonathan Miller  
(918) 237-7582

## New Beginnings ESTATE SALES

OF SOUTHWEST MISSOURI  
417-529-9166  
**VERY UNIQUE Estate 'Tag' Sale of Thomas and Carolyn Prettyman 5254 McClelland Park Joplin, Mo 64804**

(From 32nd and S. Schifferdecker, head south to McClelland Blvd. left on McClelland Blvd. and curve around S curve to McClelland Park Road, turn right to sale)

**Fri. Oct. 28: 9am-5pm Sat. Oct. 29: 9am-NOON**

Come to the cabin in the woods! The Prettyman's are downsizing to Northern Missouri, therefore we are liquidating wall to wall of their 2 story home of remaining furnishings, collectibles, antiques and garage items. If you like primitives and unique home decor, this is the sale for you! Hundreds of stuffed bears and animals; collectible decor; wrought iron wall art; antique fireplace mantle; stained glass and hanging glass windows; wicker chairs; decorative iron table and (4) chairs plus matching bakers rake; kitchenware; household; Longaberger baskets; Bosch front load washer and dryer (elec); cast iron; Americana decor; lodge and cabin decor including old church benches; garden urns; wagon wheels; concrete statuary; concrete fountains; wall art; plus very nice women's clothing-purses -shoes; dolls; end tables; lamps; dual recliner sofa; floor safe; full size bed set; some tools and lawn-garden items. This is a very clean, well cared for contents.

**Terms:** NOT AN AUCTION... All items are priced and tagged, for immediate sale both days. Firm prices on Friday, Saturday is 50% off all remaining items excluding furniture. We accept cash, local Joplin metro area check, debit/credit cards with a 4% convenience fee on transactions over \$100. PLEASE bring help to load larger items. Announcements made day of sale supersede all printed material. All sales are final, no refunds, no warranties expressed or implied. See preview photos on our Facebook Page or [Estatesales.net](http://Estatesales.net)

ADVERTISE YOUR Flea Market or Antique Store in the Antique & Flea Market Directory. Call Billie for more information and special pricing.  
417-624-4100.

**SPACE AVAILABLE**  
ASK ABOUT OUR OUT-OF-THIS-WORLD PRINT ADVERTISING RATES THAT FIT ANY BUDGET!

FIND THE  
**RIGHT RIDE**  
FOR THE  
**RIGHT PRICE**

Find the stuff you want.  
Sell the stuff you don't.  
Save time and money with  
the newspaper classifieds!



If You Want To Sell.  
We're The Ones To Tell!!



**Jim Lievens**  
417-455-5311 • 417-434-4528 Mobile  
www.circle1auction.com

**AUCTIONEER'S NOTE:**  
GREAT AUCTION! We Have Some Good Tools, Toys, Old Car Parts, Pocket Knives, Lot Of Miscellaneous To Be Sold In This One!! They Have Sold Their Home So We Are Moving The Auction To Neosho Shriners Building!! Come Prepared To Haul Sale Day!! Because This Is A Rented Building! But We Are inside!! DON'T MISS!! SEE YOU SUNDAY AT 12 NOON!!!!

Snow Ski's, Concrete Form Stakes, Pine Table, Tractor Seat, Boat Seat, Plumbing, Electrical, Hardware, Gate Hooks, Stereo, Steel Sheets, Sump Pump, Dove Tail Boxes, Metal Storage Rack.

ID required for bidder number - Not responsible for accidents - Lunch - Terms Cash/Visa/MC/Discover - Preview by Appointment

**PUBLIC AUCTION**  
SUNDAY, OCTOBER 30TH, 2022 12 NOON  
MR. & MRS. GARY JORDAN  
13167 LAURA LANE, NEOSHO, MO  
AUCTION TO BE HELD INSIDE SHRINERS CLUB BUILDING

Directions: From Interstate 49 And 86 Highway, At Neosho, MO, Go East On 86 Hwy To Keene Lane, Turn Right On Keene Lane, (By Access Family Care Medical Center), & Go to Sale At End Of Road. WATCH FOR SIGNS!

**TOOLS:** Pipe Wrenches, Lot Of Cclamps, 3 In One Ladder, Step Ladders, Delta Band Saw, Drill Bits, Pliers, Hammers, End Wrenches, Hydraulic Engine Puller, Pipe Dies, Tool Boxes, Files, Punches, Oil Cans, Shop Fan, Hatchets, Rolling Jack Stands, Bench Vise, Hand Saws, Steel Top Work Bench, Wash Boards, 2 Wheel Dolly, 1989 Mercury Outboard Motor (Good), Engine Stand, Pullers, Sockets, Ratchets, Extensions, Pocket Knives, Punches, Chisels, Snap On Tools, Furniture Clamps, Sand Blasting Cabinet & Roll Around, RIDGID Spindle Sander, DELTA Drill Press, Conduit Bender, Drum Sander, Drop Cords, CRAFTSMAN Radial Arm Saw, DELTA Planer Jointer, GRIZZLY 2 HP Dust Collector, Machinist Tool Box, Dove Tailer, Router Bits, 1968 Johnson 6 HP Outboard Motor, Power Tools Sawzall, Drills, Sanders, Etc!, Rods & Reels Cast, Fly, Bait, Tackle Boxes & Tackle, Lot Of Reels, Floor Jack, Fish Finder, STIHL Weedeater, Tiller & Limb Saw Attachments, Boat Fuel Tanks, Reese Tow Bar, Car Ramps, Cast Lawn Tractor Sprinkler, Lawn Roller, Wood Extension Ladder, Log Chain, Splitting Maul, Pitch Fork, Coffin Hoist, Shovels, Rakes, Hoes, Wood Sled, Crescent Wrenches, FIMCO Sprayer On Trailer, Garden Hose, Adv Fuel Cans, CRAFTSMAN Scroll Saw, Oil Cans, Seeders & Sprayers, Cable Sling, Drill Press, 4 Barrel Carburetor.

**OLD CAR PARTS, TOYS, & MISCELLANEOUS:** Cap Guns, Lincoln Logs, Tinker Toys, Press Steel Toy Trucks, STRUCTO Truck (Old), JOHN DEERE Farm Toys, Straight Razors, Lighters, Buttons, Shop Stool, Wood Egg Crate, Wire Milk Crates, Propane Fish Cooker, Gas Barbeque Grill, Hose Filters, Sprayers, Model A Tire, 1950 & 60 Car Parts, 1903 Buick Windshield, 1929 Chevy Radiator Cowling, Wood Berry Crates, Croquet Set, Lot Of Keys & Locks, Large Tarps,



There's  
a better  
way to get  
noticed.

Keep life simple.  
Take out an ad.

**AUCTION**  
MOVING

SUNDAY, OCTOBER 30, 2022 - 12:00 P.M.

LOCATION: 13120 SEBA RD CENTERTON AR 72719

10% Buyers  
Premium

**TRACTOR / FARM** 271 XE MASSEY FERGUSON W/QA BRUSH HOG M446 LOADER HRS EXEMPT 8 FT 2 PIECE QA ACCUMULATOR FRONT END QA HAY SPEAR 7 FT BOX BLADE W/ RIPPER TEETH 3 POINT HAY SPEAR 3 POINT BALE SKID 8 FT SIDEWINDER PULL BEHIND HYDRAULIC ROTARY MOWER 3 POINT 6FT ANGLE BLADE W/ SIDE SHIFT 3 POINT COSMO 500 SPREADER 7 FT 3 POINT FIELD DISC (2) 300 GALLON FUEL TANKS ON STANDS 100 GALLON GALVANIZED STOCK TANK JOHN DEERE PORTABLE LOG SPLITTER /BRIGGS AND STRATON ENGINE 28 FT TRIPLE AXLE SHOP BUILT GOOSENECK 18 FT DIAMOND PLATED STEEL CAR HAULER 8 FT SINGLE AXLE UTILITY TRAILER W/ FIRE EXTINGUISHER BOX

**ARENA / PANELS / HORSE** 8FT SPIN HARROW

**ARENA RAKE** 4 HORSE WALKER W/ 16 FT ARMS (21) 10FT PANELS (33) 10 FT GALVANIZED PANELS (3) 10 FT WALK THRU GATES (1) 10 FT GATE (13) 12FT PANELS (3) 14 FT PANELS (30) 16 FT PANELS 8 FT CALF ROPING CHUTE PULL BEHIND HOT HEELS ROPING STEER ROPING DUMMY HEAD STANDARD / HORSE ANTIQUE SULKY 8 FT SHAFTS SEVERAL HORSE FEEDERS SOME USED T POSTS OLD HALTERS,TACK HOOKS BOX OF OLD HORSE BITS

**TOOLS / SHOP / MATERIALS** FARLEYS MODEL 4200 PRESSURE STEAM WASHER INDUSTRIAL AIR OF TEXAS SHOP AIR COMPRESSOR W/ 5HP/230V MARATHON MOTOR CHICAGO ELECTRIC 220V WIRE WELDER CENTURY 110V WELDER MILLER THUNDERBOLT 225 WELDER 2 TON ENGINE HOIST 7'X4'

STEEL SHOP TABLE W/ VISE ON CASTERS 20 GALLON PARTS WASHER RTI TECHNOLOGIES AUTO TRANSMISSION FLUID EXCHANGER KENT-MORE ADMISSION SYSTEM TESTER MIDTRONICS BATTERY ELECTRICAL DIAGNOSTIC STATION CART AND TORCH CHEETAH BEAD BLASTER CH-5 COATS TIRE CHANGER MODEL 10-10 ACCUTURN BRAKE LATHE MAKITA 14" CHOP SAW 8 FT VIDMAR STACKING SHOP ORGANIZER 8 FT TALL PROPANE CONVERTED SHOP STOVE W/ BLOWER BELSAW 12" WOOD PLANE CHAIN SHARPENER ON STAND HORIZONTAL TOOL CRAFT MOTORIZED JOINTER 6 1/8 LARGE OIL PAN SHOP CART 36" BOLT CUTTERS WOODEN SHOP TABLE W/ 6" VISE ALUMINUM 150 GALLON TRUCK FUEL TANK OVER (30) 20' X 1"

GALVANIZED CHAIN LINK FENCE PIPE METAL PIPE RACK TIRE RACK MASTER PROPANE SHOP HEATER SEVERAL FLOOR JACKS SEVERAL SHOP SHELVES

**WESTERN / ANTIQUES** (2) LIFE SIZE FIBERGLASS HORSE STATUES HORSESHOE SHOP MADE GRILL SEVERAL OLD MILK CANS HANDMADE IRON WHEEL BENCHES IRON WHEEL CHAIR FRAME IRON WHEEL TABLES SEVERAL IRON WHEELS LEATHER CRAFT TOOLS GENUINE LAMBSKIN BY BRITISH LEATHER WESTERN DECOR COLLECTION OF WESTERN HORSEMAN, THE ROPING PEN, SUPER LOOPER, MAGAZINES

**MISC / HOUSEHOLD** KUBOTA AT 70S-E ROTARY TINE TILLER W/ELECTRIC START (4) KUMHO 235/75/ R17.5 18 PLY TIRES LIKE NEW HUSKY ALUMINUM TRUCK

TOOL BOX 30 GALLON 12V SPRAYER LAWN MOWER CART WHIRLPOOL SIDE BY SIDE REFRIGERATOR W/WATER AND ICE NO 14 LODGE DUTCH OVEN OVER A DOZEN PIECES OF CAST IRON SKILLETS/ POTS/ KETTLE/ DUTCH OVEN REDSTONE, LODGE, GRISWOLD HUNTING APPAREL, JACKETS, COATS, PANTS ETC MOSTLY SIZE LARGE METAL TOY FIRE TRUCK (3) MATCHING WOODEN BARSTOOLS (2) MATCHING SHORT BARSTOOLS (2) WINGBACK CHAIRS (2) ANTIQUE CANE BACK CHAIRS SMALL DROP LEAF SIDE TABLE 30"H ENTERTAINMENT CENTER ANTIQUE WALNUT CHINA HUTCH

**JEFF FIELDS**

AUCTIONEER NOTE: JEFF FIELDS RESIDENT OF CENTERTON FOR 40 YEARS HAS SOLD FARM AND IS MOVING. ANNOUNCEMENTS MADE DAY OF AUCTION, SUPERCEDES ANY PRINTED MATERIAL. 10% BUYERS PREMIUM

AUCTIONZIP.COM #27181

For more pics like our facebook page.



AUCTION CONDUCTED BY  
**DWAYNE CRAIG AUCTION SERVICE**  
479-957-3965 | Gravette, Arkansas | AALB # 5

Turn Your Clutter Into Cash



Get more money in your pocket and room in your garage when you sell your stuff and promote your sale in the classifieds!





# J&H SPRING CONSIGNMENT AUCTION Saturday, Nov. 5th 9:00 A.M. Warner, Ok

**DIRECTIONS: 4130 E. 203RD ST. S. EXIT I-40 AT WARNER, GO SOUTH 1 MILE TO 266, THEN 1 ¼ MILE WEST, WATCH FOR SIGNS.**

**It's time for the Fall Consignment Auction. We will be expecting 30-50 tractors, along with lots of hay, construction, & cattle equipment as well as trucks, trailers, and tillage. We will start accepting items that are farm & ranch related starting: Monday Oct.24th - Friday Oct. 28th. Monday Oct.31st - Friday Nov. 4th. From 8:00am to 5:00pm.**

**For more information and pictures, be sure to visit our website at WWW.JANDHEQUIPMENT.NET or give us a call.**

**RICKY JONES @ 918-843-0454  
BRETT JONES @ 918-284-8288**

668609cb

## REAL ESTATE & TURN-KEY BUSINESS TUESDAY, NOVEMBER 1ST 2022 1:00 PM 223 SOUTH WOOD ST., NEOSHO, MO 64850

**DIRECTIONS:** ½ BLOCK SOUTH OF THE NEOSHO SQUARE ON WOOD ST OR ½ BLOCK NORTH OF THE NEOSHO POST OFFICE. WATCH FOR SIGNS!

**PROPERTY DETAILS:** TURN-KEY BUSINESS WITH MANY ITEMS AVAILABLE, RIGHT OFF THE NEOSHO SQUARE, PARKING LOT FOR CUSTOMERS, A BAKER'S DREAM! 1069SQFT, \$741.63 TAXES.

**3% BUYERS PREMIUM ON REAL ESTATE PAID BY BUYER. BROKER PARTICIPATION INVITED. REALTOR MUST REGISTER POTENTIAL BUYER 48 HOURS. PRIOR TO AUCTION, CALL FOR REGISTRATION FORMS.**

**BAKERY INVENTORY INCLUDED IN REAL ESTATE:** PREP TABLE & REFRIGERATION UNIT; STAINLESS TABLE; GLASS FRONT REFRIGERATION; STOVE/OVEN ELECTRIC, NOT COMMERCIAL; PANINI PRESS, NEW; PANINI PRESS, USED; 2 MICROWAVES; HALF SIZE OVEN & PROOFER; STOVE/OVEN SMALL APT SIZE; WOODEN TOP TABLE; STAINLESS STEEL TABLE; COMMERCIAL FREEZER; COMMERCIAL REFRIGERATOR; STAINLESS W/SHELF, SMALL STAINLESS WIRE RACK; 20 QUART MIXER; 8 QUART MIXER; (2) 5.5 QUART MIXERS; FOOD PROCESSOR-COMMERCIAL JUICER; 200 HOT CUP SLEEVES; 250 WHIP CREAM CHARGERS; 458 INDIVIDUAL PIE SLICE CONTAINERS; 124 BROWN BAKING CUPS; 10,000 KRAFT DELI TISSUES; 132,000 PINK AND BROWN DELI TISSUES; 526 8 OZ. MICROWAVABLE CONTAINERS; 1,100 12 OZ COMPATIBLE CUP LIDS; 1,175 12OZ SOUP COMP.; 850 8 OZ. COMPATIBLE SOUP CUPS; 950 9 OZ. COMPATIBLE CUP LIDS; 8,000 MINI CUPCAKE CUPS; 226 5" ALUMINUM PIE TINS; 459 8 OZ. SQUAT FOAM CONTAINERS; 240 16 OZ PLASTIC DELI STORAGE CONTAINERS; 2 PACKAGES OF 5000 NAPKINS; 2 OAKS OF SANDWICH WRAPPERS; 27 SYRUPS- PARTIAL; 200 ORDER FORMS; 50 GIFT CERTIFICATES; VARIOUS CHOCOLATE BLOCKS (DARK, WHITE, ETC); 955 12 OZ COMPACTIBLE CLAM SLEEVES; VANILLA (16 OZ, 30.96); 1500 WHITE BAKING CUPS- STANDARD SIZE; WHITE BAKING CUPS JUMBO; MATCHA POWDER; PINK AND WHITE PAPER STRAWS; SODIUM ALGINATE POWDER; CALCIUM LACTATE POWDER; ALUMINUM FOIL; 18" FOOD FILM; RETRO PINK AND WHITE CHAIRS; RETRO PINK AND WHITE BAR STOOLS; RETRO 1995 GENERAL ELECTRIC FRIDGE STORAGE; RETRO FREEZER CONVERTED TO SELLS COUNTER; GLASS FRONT COOKIE CASE; PARLOR BOAT WIRE TABLE AND CHAIRS; ROUND RESTAURANT TABLES; RETRO BREADBOX - RETRO HEATER FOR DISPLAY ONLY; PRINTER - CASH DRAWER - CUSTOM-MADE HOLDER FOR IPAD (IPADS NOT INCLUDED); ESPRESSO MACHINE; COFFEE MAKERS; COFFEE GRINDERS; SERVING PLATES - BOWLS - SILVERWARE; COFFEE CUPS - GLASS COLD DRINK GLASSES; DISPLAY PLATES ASSORTED; DISPLAY PRICING SIGNS; COLD DRINK DISPENSERS; COFFEE CARAFES; BREAD, CAKE & MUFFIN PANS; ASSORTED COOKING PANS; GLASS ASSORTED MIXING BOWLS - STORAGE CONTAINERS; ASSORTED SIZE STAINLESS BOWLS; SPATULAS, SPOONS, KNIVES, ROLLING PINS ETC.; ELECTRIC SOUP POT; 75 FOAM HINGED LID FOOD CONTAINERS; 3250 8X4X18 IN BREAD BAGS; 2800 5X4X15 IN BREAD BAGS; 670 SINGLE SERVE CUPCAKE CONTAINERS; 877 SINGLE LARGE CUPCAKE; 422 CLEAR CLAMSHHELLS; 69 6CT CUPCAKE HINGED TRAYS; 3604 16OZ COLD CUPS; 2474 COLD CUP FLAT LIDS; 348 12OZ HOT CUPS; 845 HOT CUP LIDS; 77 PUSH POP CONTAINERS; 500 JUMBO GOLD BAKING CUPS; 100 TULIP BAKING CUPS; 2 POLY COLLARS 250PK; 1039 PLASTIC FORKS; 782 PLASTIC SPOONS; 1000 12LB KRAFT BAGS; 1084 4LB KRAFT BAGS; 1300 2LB KRAFT BAGS; 700 KRAFT TRAYS; 475 WHITE MERCHANDISE PLASTIC SHOPPING BAGS; 250 LONG STRAWS; 1 COCONUT EXTRACT; 500 KRAFT PAPER STRAWS; 10 WAX PAPER; 3 PARCHMENT PAPER; 13 BLACK CARRY OUT CHINESE STYLE BOXES; 2651 24OZ COMPOSTABLE COLD CUPS; 383 DOME LIDS; 1500 FAT SMOOTHIE STRAWS; 17 12CT MINI CUPCAKE CONTAINERS; 426 16OZ COMPOSTABLE HOT CUPS; 29 DRINK CARRIERS; 9 4CUP DRINK CARRIERS; 700 COFFEE FILTERS - 3PKG; 600 UNBLEACHED PARCHMENT PAPER ½ SHEET - 3PKG; 30 STEAM TABLE TRAY; 1600 1OZ PORTION CUPS; 3250 ¾OZ PORTION CUPS; 1125 3.25OZ PORTION CUPS; 2675 3.25OZ LIDS; 3800 1OZ AND ¾OZ LIDS; 634 9" PIE TINS; 1.5 HANDI FOIL (1 FULL, 1 HALF); ¾ HANDI PARCHMENT; 20 CUPCAKE INSERT 12CT; 3 BAGS COCOA POWDER; 10 A TEELS DIPPING CHOCOLATE 10LBS; 5 MILK CHOCOLATE DIPPING 5LBS; 2.2 RUBY CONVECTURE CHOCOLATE CALLETS 2.2LBS; 5 CALLEBAUT MILK CHOCOLATE 5LBS; 7 10OCT RED ROSE TEA BOXES; 1 1500CT BOX OF SWEET AND LOW PACKETS ; 600 SPLENDA; 250 STEVIA IN THE RAW PACKETS; 7 TORANI SAUCES; 1 5LB ESPRESSO BEAND; 143 SODA POP; 63 19X14X4 BOX W/LID; 300 7X7X4; 97 CAKE BOARD; 282 10X7X4; 576 10X10X4; 65 CAKE BOARD; 3200 COOKIE BAGS; 2 GLUTEN FREE LABELS; 114 10X5X13 KRAFT BAGS W/HANDLE; 98 9X14X4 CORRUGATED BASE ½ SHEET; 49 19X14X4 WINDOW LIDS; 87 CAKE BOARD; 50 CAKE BOARD; 163 10X10X6 CAKE BOX; 100 19X14X4 LID ½ SHEET; 39 26X18X4 CORRUGATED FULL SHEET BOTTOM; 40 FULL SHEET LID; 82 8X8X6 BOX W/WINDOW LID; 42 12X12X6 BOX BASE; 45 12X12X3 LID; 122 14X10X15.5 KRAFT BAG; 100 14X10X4 ¼ SHEET; 65 19X14X2 ½ SHEETBLID; 10 FULL SHEET BOARD; 128 QUARTER SHEET BOARD; 125 14X14X6 BASE ONLY; 200 4X4X4 BOX; 5 HALF SHEET CAKE BOARD; 43 HOLIDAY CHRISTMAS BOX; 100 CAKE BOARD; 850 MATTE BOWS RED (GLERUP); 1650 MATTE BOWS PINK (GLERUP); 50 BROWN GIFT BAGS (GLERUP); 52 CLEAR BOXES; 800 5OZ HARD PLASTIC TUMBLERS; 262 9OZ HARD PLASTIC TUMBLERS.

**NOTE:** DUE TO HEALTH, LYNN MCLAUGHLIN IS SELLING THE FLOUR BOX BAKERY. EXCELLENT OPPORTUNITY TO PURCHASE AN ESTABLISHED BUSINESS AND EXCELLENT REAL ESTATE. WELL EQUIPPED AND WONDERFUL DOWNTOWN LOCATION!

**OWNER: LYNN MCLAUGHLIN**

**TERMS: CASH, CHECK, 4% CONVENIENCE FEE FOR DEBIT & CREDIT CARDS. 10%**

**BUYERS PREMIUM ON ABSENTEE & PHONE BIDS. PROPER I.D. REQUIRED FOR BIDDER NUMBER.**

**NOT RESPONSIBLE FOR LOSS OR INJURY!**

**VENTURE GROUP AUCTION**

**SHAUNA NORRIS**  
Auction Manager  
Office Number  
417.592.4560

Featuring  
**BOB LASSWELL**  
Professional Auctioneer Since 1977  
417.850.5444

PREVIEW ONLINE  
WWW.VENTUREGROUPAUCTION



ANY ANNOUNCEMENTS THE DAY OF AUCTION SUPERSEDE ALL PRINTED MATERIAL

## AUCTION SALES

# ANTIQU & ESTATE AUCTION

**Tuesday, November 1st, 2022 ~ 10:00 AM**

**LOCATION: 1701 West Fairview Ave, Carthage, MO; GPS Will Get You There (Watch For Signs)  
Auction For Mr. & Mrs. William "Bill" J. Wilson**

**Antique & Ornate/Primitive Hand Made Furniture & Décor Pieces** Hand Made Ornate Pcs That Are Only One In Existence Inc Ships Wheel Ant Pc On Rr Cart, Long Gear Wheel Table, Working Roll Around Table W/Entertaining Machine, Prim Tree Trunk Board Table, Ornate Wine Cage, Ornate Hand Made Décor Mirrors, Lg Sconce Candle Holder On Wood & Other Odd Hand Made Pcs, Ant Low Boy Dresser W/Mirror, 4 Pc Ornate Living Room Suite Inc Sateer, Glider Chair & 2 Sitting Chairs, Ant Oak Library Desk W/Drawer & Sides, Ant 150 Yr Old Roll Top Desk, Ant 100 Yr Old Iron Harvest Table, Rare Ant Tilt Hand Made Desk From London England, Several Ant Ornate Lamps, Ant Lead Glass Pcs, Ant Lions Face Lamp, Ant Oak Table, Ant Dresser Mirrors, 2 Ant Iron Ice Cream Tables & Chairs, Ant Cedar Chest, 2 Ant Wood Dowel Prim Wood Shelves, 3 Ant Pictures From Hunting Trip W/President Roosevelt, Very Hard To Find Ant Art Painting Pcs From All Over, Ant Desk Lamp, Ant Deck Shuffleboard Game, Wicker Bedroom Suite, Cowhide & Zebra Rugs, Ant Furniture Parts, Round Kitchen Table & Chairs, 15 Cu Ft Chest Deep Freeze, Other Items Not Listed.

**Very Rare Antiques, Primitives & Oddity Items** Ant 150 Lb Anvil On Stand, Ant Anvil Hardy, Ant Cast Kettle, Lg & Sm Ant Rr Carts, Ant Cowboy Galvanized Washtub On Stand, Rare Ant Metal Steps From Carthage Lakeside, Ant Branding Irons, Ant Barn Trolley, Ant Metal Coke Cooler, Ant Hand Grinder, Ant Spittoon, Several Old Grinding Wheels From Lg To Sm, Copper Apple Kettles & Other Old Copper Pcs, Several Unusual Cast Iron Pcs, Metal Goat Décor Pcs, Kettle Stands, Elk, Deer & Steer Horns, Hand Carved Wood Alligator, Wood Outdoor Tea Cart, 2 Elephant Table Plant Stands, 2 Ant Belgian Headstones, 4 Lg Wood Rocking Chairs, Ant Sewing Machine Base Table, Ant Bikes, Lg Ant Gas Station Oil Can, Ant Pulleys, Ant Meat Hanger, Lg Lot Of Ant Cowboy Décor, Ant Ice Tongs, Ant Iron Wheels, Ant Hand Grinding Stone, Ant England Metal Ash Pot, Ant Fireplace Sets, Ant Addem Up Dart Game, Ant Metal Tater Or Onion Bin, Ant Ornate Plant Stand, Very Lg Lot Of Unusual Hard To Find Ant, Prim & Oddity Items Not Listed.

**Welder, Shop Tools, Small Tools, Horse & Outdoor Décor Items** Iron Ornate Metal Bench, Several Outdoor Concrete Décor Items Inc Black Americana Horse Tie & Other Unique Items, Wood Porch Glider, Outdoor Benches, BBQ Grill, Outdoor Cooker, Lg Lot Of Pots & Planting Items, 2 Horse Hay/Bunk Feeders, 2 Water Tanks, Kalamazuo Metal Hack Saw, Lincoln AC 225 Welder, 100 Ft Of Welding Line, Radial Arm Saw, Lg Drill Press, Dremel Scroll Saw, Dewalt Grinder, Sander On Stand, Lg Shop Fan, Sm Hand Tools, Sm Electric Tools, Set Of Rollers, Metal Welding Table W/Vise, Adj Work Tables, Sm Upright Air Compressor, Air Tank, Wood Dollies, Drill Bits, Sm Tools & Shop Items, Roll Around Metal & Wood Work Tables, Pipe Rack, Long Handle Tools, Seeders, Lots Of Other Items Not Listed.

**Auctioneers Note:** It Is An Honor To Be Cond uct ing This Auction For The Wilsons. T his Is Over 75 Plus Year s Of Collecting & Accumulation. This Is One Of The Most Amazing Antique Auctions We Have Ever Had 'The Privilege To Conduct In 25 Years. Some Very Rare & Unique Items That I Haven't Even had The Opportunity To Sell Before. Handmade Items Are Amazing & Unique, Antique Furniture & Small Antiques Are Amazing As Well. Tools & Outdoor Items Are Good And Ready To Go. This Is An Auction You Do Not Want To Miss. Please Plan Now To Attend. **Sale Order:** Furniture & Unique Items Sell First Followed By Antiques, Primitives & Oddities Then Move In To Tools & Outdoor Items. Excellent Auction. See Ya There!!! **Terms:** Cash or check with proper ID. Now accepting most major credit cards. Nothing removed until settled for. Statements made the day of sale takes precedence over printed material. Everything sold as is where is. Not responsible for accidents. Restroom available. Concessions Provided. Check our website for upcoming auctions and for additional pictures!!

## NANCE AUCTION SERVICE

No Matter How BIG or small, We Do Them All!!!

Col. Bill Nance 417-214-0093
nanceauctionservice.com
Sean Beazley 417-247-6754

**BE AN EARLY BIRD!** Place your ads before Monday and beat the rush!

**CALL ABOUT** our classified ad specials. 417-624-4100.

Have Clutter? Need room? Call the Big Nickel classifieds. We can help! 417-624-4100.

# REAL ESTATE & ESTATE AUCTION

**Sunday, October 30th, 2022 ~ 1:00 PM**

**LOCATION: 376 Route D, Lockwood, Mo; Directions: From Lockwood Go West On 160 Hwy Approx 3 Miles To D Hwy Then North On D Hwy Approx 4 Miles To Sale Site. GPS Will Get You There (Watch For Signs)**

**Auction For Susie & The Late Ross Knierim**

**Real Estate Sells At 1:00 PM** Real Estate Consists Of 3 Bedroom Possibly 4, One Bath Home, Has Kitchen, Dining, Living, Utility & Office Rooms. Home Has Metal Roof, Energy Efficient Windows & Doors, Tile & Carpet Floors, Lots Of Cabinets & Has Had Some Remodeled Updating, Setting On Approx 5 Acres M/L, Has 1 Car Garage, Pasture Is Fenced & Cross Fenced, Has Some Timber & Lots Of Deer & Turkey. Home Is In Lockwood School District & Is Centrally Located Between Joplin & Springfield For Larger City Access. Excellent Home & Property. To Preview Contact Bill At 417-214-0093. Terms: 10% Down Day Of Sale With Signed Contract And Balance Due In 45 Days Or When Closing Date Set By Abstract Office. Seller Has The Right To Accept Or Reject Any And All Bids.

**Furniture & Appliances, Also Household Items** Prim Cabinet, 3 Oak Shelves, Round Oak Kitchen Table, Oak Kitchen Chairs, 2 Queen Anne Leg & Wing Back Chairs, Curio Display Cabinet, Sofa & Round Tables, Old Sitting Chairs, Leather Electric Recliner, Breakfast Table & Chairs, King Size Bed, Armoire, 2 Chest Of Drawers, Sm Desk, Old School Desk, Magazine Table, Lamps, Pictures & Mirrors, Hospital Bed, Restaurant Style Stainless Shelf, Wood Burning Heat Stove W/Blower, Eden Pure Heater & Several Radiator Type Heaters, 5 A/C Units, Refrigerator, Flat Top Electric Cook Stove, Whirlpool Washer & Electric Dryer, 5 Flat Screen TVs, Art Supplies, Easels, Lots Of Knick Knacks, Galvanized Pcs, Christmas Décor, Like New Sm Kitchen Appliances, Pots, Pans & Dishes, Several Totes & Boxes Of Household Items Not Listed

**Autos, Trailer, Kayak, Mower, Tools & Outdoor** 2005 F150 Extended Cab 2 Wheel Drive Truck W/V8 Motor, Auto Trans, Approx 230,000 Miles, 2005 Chevy Impala 4 Door Car W/V6 Motor, Auto Trans, Miles Unknown (Needs Work), 4x8 Flatbed Utility Trailer, Wilderness Kayak W/Extras, Rear Hitch Wheelchair Carrier, Troybilt TB2454 Hydro Riding Mower, Electric Pressure Washer, Yard Utility Cart, Bostich Air Compressor, Electric & Gas Weed Eaters Inc 1 Sthil, Sthil Chainsaw, Table Saw, Chop Saw, Scroll Saw, Sm Electric Tools, Shop Vac, Lots Of Dewalt Tools, Sm Hand Tools, Wheelbarrow, Truck Toolbox, Car Ramps, Gas Cans, Track 400 & Another Mountain Bike, Golf Clubs, Camping Supplies, Some Cut Wood, Live Plants, Outdoor Furniture, Stainless BBQ Grill, Garage Barrel Wood Heat Stove, Grow Unit, Other Items Not Listed

**Storage Building, Gazebo, Portable Garage, Dog Pen, Rabbit Hutch, Chicken Coop & Farm Related Items** 10x12 Portable Storage Building, Portable Iron Frame Garage, Gazebo, 4 Panel Dog Pen, Chicken Coop, Rabbit Hutch, Rabbit & Chicken Supplies, Cattle Wire Panels, Bale Ring, Stall Hay Racks, Gates, Water Tanks, Stock Tank Heaters, Horse Tack, Steel Posts, Other Items Not Listed

**Auctioneers Note:** It Is An Honor To Be Cond uct ing This Auction For The Knier im Family. This Is An Outstand ing Auction With Something For Everyone. If You Are Looking For A Real Estate Property In The Country But Close To Town This Is Your Opportunity. Storage Building And Gazebo Are Excellent. Kayak & Trailer Are Good As Well. Everything Is Excellent & Clean Or In Good Worki ng Order. You Will Not Be Disappointed. Please Plan Now To Attend. **Sale Order:** Real Estate Sells First Followed By Furniture, Appliances & Households Then Small Tools & Outdoor. At Approx 3:30 PM Will Offer Autos, Trailer, Kayak, Storage Building, Gazebo & Larger Items. Remainder Of Tools Will Finish Auction. See Ya There!!! **Terms:** Cash or check with proper ID. Now accepting most major credit cards. Nothing removed until settled for. Statements made the day of sale takes precedence over printed material. Everything sold as is where is. Not responsible for accidents. Restroom available. Concessions Provided. Check our website for upcoming auctions and for additional pictures!!

## NANCE AUCTION SERVICE

No Matter How BIG or small, We Do Them All!!!

Col. Bill Nance 417-214-0093
nanceauctionservice.com
Sean Beazley 417-247-6754

**AUCTION SALES**

**REAL ESTATE & ESTATE AUCTION**  
**SATURDAY, OCTOBER 29TH, 2022 • 10:00 AM**  
**10341 E. HWY 86, NEOSHO, MO 64850**

**DIRECTIONS:** TAKE EXIT 27 ON I-49 (LOVES TRUCK STOP), TURN LEFT AND GO WEST ON HWY 86, 1.50 MILES TO AUCTION ON YOUR LEFT. WATCH FOR SIGNS!

**LUNCH AVAILABLE • WATCH FOR SIGNS • BATHROOM PROVIDED**

**PROPERTY DETAILS:** 3 BED, 2 BATH RANCH HOME, 2+/- ACRES, 2 CAR GARAGE, \$730.20 TAXES  
**3% BUYERS PREMIUM ON REAL ESTATE PAID BY BUYER. BROKER PARTICIPATION INVITED. REALTOR MUST REGISTER POTENTIAL BUYER 48 HOURS. PRIOR TO AUCTION, CALL FOR REGISTRATION FORMS.**

**\*REAL ESTATE AT AUCTION SELLS AT NOON\***

**RAM PICKUP:** 1989 DODGE RAM 150 PICKUP (SHOWS 75,000 MILES) AUTOMATIC TRANSMISSION V8.  
**APPLIANCES:** 18 CUBIC FOOT HOT POINT REFRIGERATOR WHITE ICE MAKER; GE SPECTRA SMOOTH TOP ELECTRIC RANGE SELF CLEANING; GE MICROWAVE.  
**ANTIQUES:** ANTIQUE ELECTRIC LAMP; ANTIQUE GALVANIZED WASH TUB; ANTIQUE TRUNK AND PRINTERS TRAY; ANTIQUE METAL PEPSI CARRIER; ANTIQUE TOOLS; ANTIQUE CORN PLANTER; IDE ASSOC. OIL CAN; ANTIQUE TIN CANS; ANTIQUE YELLOW HIGH CHAIR.  
**HOUSEHOLD:** LOTS OF KITCHEN APPLIANCES (CROCK POT TOASTER, ETC); POTS AND PANS AND BAKEWARE; UTENSILS; ASSORTED TABLE LAMPS GWTW; ORNATE WALL MIRROR; SUNBEAM MIXER; GLASS MEASURING CUPS; MORE ASSORTED CLOCKS (REGULATOR, ALARM); LOTS OF ASSORTED HOME DECORATORS, FIGURINES, AND WHAT NOTS; CORRAL DISHES; ASSORTED TUMBLERS; IRON STONE DISHES; KITCHEN LINENS; DRESSMAKER PORTABLE SEWING MACHINE; PORTABLE SEWING MACHINE; SMALL LOT OF ASSORTED COSTUME JEWELRY; ONE LOT OF PAPERBACK BOOKS; STELLA POWELL AND GOODMAN HISTORY BOOKS; BRASS QUILT RACK; WOOD QUILT RACK; LARGE WOOD REINDEER; ASSORTED CHRISTMAS DECORATIONS; LOTS OF NUMEROUS HOUSEHOLD ITEMS TOO NUMEROUS TO MENTION.  
**FURNITURE:** 4 PIECE BROWN FLORAL SOFA LOVE SEAT CHAIR AND OTTOMAN; OAK TV STAND; WICKER PATIO CHAIRS; GLASS TOP PATIO TABLE WITH 4 CHAIRS; PINE COFFEE TABLE AND END TABLE; CHILD'S ROCKER; LARGE SOLID OAK ROCKER; BROWN ROCKER RECLINER; 2 SWIVEL ROCKER RECLINER; SOUTHWEST SOFA; SMALL PINE KITCHEN CABINET; MAPLE KITCHEN TABLE AND 6 CHAIRS; MARBLE TOP SPOON CARVED WASH STAND WITH MIRROR; 4 DRAWER PINE CHEST; KENMORE ELECTRIC DRYER WHITE; 3 PIECE PINE BEDROOM SUIT (DOUBLE DRESSER, QUEEN SIZED BED, AND A CHEST); WHITE FULL SIZED IRON BED; WHITE FOUR DRAW CHEST; QUEEN SIZE POSTER BED; 3 PIECE WICKER PATIO SET; 4 ANTIQUE OAK ROUND BOTTOM CHAIRS; 42 INCH ROUND OAK TABLE.  
**MISC:** LARGE LOT OF LAWN AND GARDEN TOOLS; ONE LARGE LOT OF NEW AND USED GRIGS AND STRATTON LAWN MOWER AND ENGINE PARTS; ASSORTED OILS, LUBRICANTS; METAL 5 GALLON CANS; WOOD CRATES;; BUSHEL BASKETS; METAL MINNOW BUCKET; KEROSENE HEATER; OUTDOOR CHRISTMAS DECORATIONS; OLD OFFICE SAFE 33TX23WX22D; TREBLE SEWING MACHINE AND CABINET; ONE LOT OF OLD CLOCKS AND PARTS; WELL PULLEY; WESTERN FLYER LADIES BIKE; POLY GARDEN WAGON; WOOD PATIO COOLER; TON AND A HALF FLOOR JACK; ASSORTED PLANTERS; ASSORTED JARS VARIOUS SIZES; WHITE CLAD REPRODUCTION ICE BOX.  
**TRACTOR & BUSHHOG:** FORD JUBILEE TRACTOR- RUNS; 5 FT 3 POINT BUSHHOG.  
**EQUIPMENT:** CUB CADET RTZ 0 TURN MOWER WITH A 42 INCH CUT 20 HORSE; WHEEL HORSE C-160 GARDEN TRACTOR FOR PARTS; HUSQVARNA 3.75 HORSE STRING TRIMMER; GRIGS AND STRATTON 55400 WATT PORTABLE GENERATOR.

**NOTE:** ESTATE AND REAL ESTATE AUCTION. AUCTION DUE TO THE DEATH OF AND TO SETTLE THE ESTATE OF JOAN SULLIVAN. NICE CLEAN HOUSEHOLD. LOTS OF ITEMS, TOO NUMEROUS TO MENTION.

**ESTATE OF JOAN SULLIVAN / KEITH SNELSON - PERSONAL REP**

**TERMS: CASH, CHECK, 4% CONVENIENCE FEE FOR DEBIT & CREDIT CARDS. 10% BUYERS PREMIUM ON ABSENTEE & PHONE BIDS. PROPER I.D. REQUIRED FOR BIDDER NUMBER. NOT RESPONSIBLE FOR LOSS OR INJURY!**



**SHAUNA NORRIS**  
 Auction Manager  
 Office Number  
 417.592.4560

Featuring  
**BOB LASSWELL**  
 Professional Auctioneer Since 1977  
**417.850.5444**

PREVIEW ONLINE  
 WWW.VENTUREGROUP.AUCTION



**ANY ANNOUNCEMENTS THE DAY OF AUCTION SUPERSEDE ALL PRINTED MATERIAL**

**BE AN EARLY BIRD!** Place your ads before Monday and beat the rush!

CALL ABOUT our classified ad specials. 417-624-4100.

Have Clutter? Need room? Call the Big Nickel classifieds. We can help! 417-624-4100.

**SUNDAY REAL ESTATE AUCTION**  
**SUNDAY, NOVEMBER 6TH, 2022 • 1:00PM**  
**19148 HIGHWAY HH, NEOSHO, MO 64850**

**DIRECTIONS:** FROM JCT 59 & 60 HWYS (WALMART), GO EAST ON 60 HWY 3 MILES TO HH HWY, TURN SOUTH (RIGHT) ON HH HWY GO 3.3 MILES TO AUCTION ON LEFT(NORTH) SIDE. WATCH FOR SIGNS!

**PROPERTY DETAILS:** 18+/- ACRES, 3 BED, 2 BATH, 1866 SQFT, JACUZZI TUB, WOOD BURNING FIREPLACE, CATHEDRAL CEILING, ABOVE GROUND POOL, 2 CAR ATTACHED GARAGE, 30X40 METAL SHOP, NEOSHO SCHOOL DISTRICT, GREAT PASTURE LAND, SEASONAL CREEK, \$1712.01 TAXES.

**\* CAN BE VIEWED BY APPOINTMENT PRIOR TO AUCTION DAY. AGENTS, PLEASE REGISTER YOUR BUYERS 3% BUYERS PREMIUM ON REAL ESTATE PAID BY BUYER. BROKER PARTICIPATION INVITED. REALTOR MUST REGISTER POTENTIAL BUYER 48 HOURS. PRIOR TO AUCTION, CALL FOR REGISTRATION FORMS.**

**NOTE:** METICULOUSLY MAINTAINED, PIPE FENCING, SPRAYED FENCE ROWS, PAVED ACCESS AND DRIVE, ALL BRICK HOME OVERLOOKING PRISTINE, PARK-LIKE PASTURE WITH SEASONAL CREEK... IT TRULY DOESN'T GET BETTER THAN THIS! NO CURTAINS, BLINDS, OR ARTWORK NEEDED INSIDE, AS THE OUTSIDE AND INSIDE MERGE IN THIS PERFECTLY SITUATED PRIVATE OASIS. PICKY BUYERS, THIS ONE IS FOR YOU!

**GALEN & AMY ROBBINS- OWNERS**

**TERMS: CASH, CHECK, 4% CONVENIENCE FEE FOR DEBIT & CREDIT CARDS. 10% BUYERS PREMIUM ON ABSENTEE & PHONE BIDS. PROPER I.D. REQUIRED FOR BIDDER NUMBER. NOT RESPONSIBLE FOR LOSS OR INJURY!**



**SHAUNA NORRIS**  
 Auction Manager  
 Office Number  
 417.592.4560

Featuring  
**BOB LASSWELL**  
 Professional Auctioneer Since 1977  
**417.850.5444**

PREVIEW ONLINE  
 WWW.VENTUREGROUP.AUCTION



**ANY ANNOUNCEMENTS THE DAY OF AUCTION SUPERSEDE ALL PRINTED MATERIAL**

**REAL ESTATE & ESTATE AUCTION**

**Saturday, October 29th, 2022 ~ 10:00 AM**

**LOCATION: 605 East Fields Blvd, El Dorado Springs, MO; GPS Will Get You There (Watch For Signs)**

**Auction For Financial Interest For Community National Bank**

**Real Estate Sells At 10:00 AM** Real Estate Consists Of 2 Story 3 Bedroom, 2 Bath Home With Kitchen, Dining, Living Utility & Office Rooms. Home Has Central Heat & Air With Basement, Good Oak Cabinets & 2 Car Attached Garage. Home Is Sitting On Approx 5 Acres M/L With A 100 x 80 Shop, Has Industrial Electric & Concrete Floor Also Has Spray Foam Insulation, Shop Has Been Used As A Business For Semi Trucks & Wrecker Service Trucks. Very Prime Property In El Dorado Springs Close To School & Several Other Businesses. To Preview Contact Bill At 417-214-0093. Terms: 10% Down Day Of Sale With Signed Contract And Balance Due In 45 Days Or When Closing Date Set By Abstract Office. Seller Has The Right To Accept Or Reject Any And All Bids.

**Furniture, Appliances, & Household Related Items** Rare Iron & Stone Rock Tables, Lg Oak Shelf/Entertainment System, Liquor Cabinet, Marble Top Cabinet/Counter, Oak Desk, Leather Couch, Buffet, China Cabinet, Kitchen Table & Chairs, Barstools, King Size & Queen Beds, Wood Chests, Stainless Restaurant Shelf, 2 Central Air Units, 2 Safes, File Cabinets, Dry Erase Board, Soda Venting Machine, Side By Side Refrigerator, Front Load Washer & Dryer, 2 Chest & 1 Upright Deep Freezers, Gas Cook Stove, Several Other Appliances, TV's, Blue Tooth Stereo System W/Super Boom Speakers, X-Box, New Robot Vac, Air Hockey Table, Pool Table, Computer System, Surveillance Camera System, Lots Of Office Supplies, Printer/Fax/ Copy Machine, China Set, Pots, Pans & Dishes, Lots Of Kitchen & Housewares Not Listed  
**Semis, Semi Trailers, Roll Back, Wrecker, & Utility Trucks, Forklift, Motorcycle, Autos, Tractor, Equipment & Related Items** 1999 & 2001 Freightliner Semi Trucks Both 18 Sp & Detroit Motors, 1999 Peterbilt 13 Sp Semi Truck W/ N14 Cummings Motor, Great Dane & Wabush Reefer Semi Trailers, 1990 Ford F800 Diesel Boom Bucket Truck, 2 Extra Buckets For Boom Truck, 2002 IH Roll Back Diesel Tow Truck W/26 Ft Bed W/Stinger & Ramsey Winch, 2007 Ford F550 Diesel 5 Sp Tow Truck W/Stinger & Ramsey Winch, 2007 F350 Diesel Utility Bed Work Truck, 2009 Kawasaki 250 Motorcycle, 2002 Honda 4x4 Highlander SUV, Clark Propane Forklift, 13 Sp Transmission, Alum Headache Rack, Semi & Other Tires, Lots Of Semi & Truck Parts, Kubota BX235 Diesel 4x4 Tractor W/LA3401 Loader, Kubota Backhoe Attachment, 16 Ft Gooseneck Stock Trailer, 6 Ft 3 Pt Ripper Box Blade, 7 Ft Bush Hog, 5x10 Trailer, 5th Wheel Hitch, 600 Gal Diesel Fuel Tank, 250 Gal Diesel Fuel Tank On Stand, Fuel Barrel Ladder Stand, Liquid Tank Full Of New Anti Freeze, Other Items Not Listed

**4 Single Wide Trailer Houses, Portable Storage Building, Propane Tank, Welders, Lg & Sm Shop Tools & Outdoor Related Items** 4 Single Wide Trailer Houses, 10x12 Portable Storage Building W/Electric & Air, 500 Gal Propane Tank, Water Cooled 3 Phase Air Compressor, Like New Lg Shop Hoist, 200+ Gal Oil Storage Bin, Miller XRW Water Cooled Welder On Cart, Arco Welder, Lg Sand Blaster, 2 Lg Generators, 2 Lg Presses, Like New Engine Hoist, 5th Wheel Gooseneck Switch, Craftsman Riding Mower, Lawn Utility Yard Dump Cart, Lg Roll Around Tool Storage Unit, Other Roll Around Toolboxes, Roll Around Storage Locker, Several Portable Air Compressors, Lg Shop Fans, Lg Lot Of Heavy Shop Shelves, Combination Work Racks, Liquid Tanks, Lg Lot Of Oil Absorbent, Parts Washers, 2 Ton Air Jack, Lg Vise, Shop Lights, Lg Floor Jacks, Lg Socket Sets, Several Heavy Duty Jack Stands, Lg Lot Of Sm Hand Tools, Lg Lot Of Electric, Air & Battery Operated Tools, Come-A-Longs, Tiller, Chipper/Shredder, Alum Ramps, Band Saw, Table Saw, Chop Saw, Scroll Saw, Grinder, Drill Press, Lots Of Lumber, Patio Gas Fire Pit, Lg Dual BBQ Grill & Smoker, Patio Furniture, Only A Partial Listing, Hundreds Of Items Not Listed, Very Lg Auction

**Auctioneers Note:** Due To Settling Debt For The Bank We Will Offer A Very Large & Outstanding Auction That For Sure Has Something For Everyone. Real Estate Property Is Excellent. Trucks & Equipment Have Been Used For Businesses Up Until Day Of Closing So Ready To Go To Work. Tools Are Amazing. Everything Is Ready To Go To Work & Be Used. Furniture & Households Are Excellent As Well. Possibility Of Running 2 Rings So Bring A Friend. Please Plan Now To Attend. Sale Order: Real Estate Sells First Then Storage Building Followed By Furniture, Appliances & Households Then Smaller Tools & Outdoor. At Approx 1:00 PM Will Offer Trucks, Trailers, Tractor, Equipment & Large Items. Remainder Of Tools Will Finish Auction. See Ya There!!!

Terms: Cash or check with proper ID. Now accepting most major credit cards. Nothing removed until settled for. Statements made the day of sale takes precedence over printed material. Everything sold as is where is. Not responsible for accidents. Restroom available. Concessions Provided. Check our website for upcoming auctions and for additional pictures!!

**NANCE AUCTION SERVICE**  
 No Matter How BIG or small, We Do Them All!!!  
 Col. Bill Nance 417-214-0093    nanceauctionservice.com    Sean Beazley 417-247-6754

**PUBLIC AUCTION**

See [www.mastersonauctionservice.com](http://www.mastersonauctionservice.com) for more details, Google map, and photos

**Estate of Sue Barnes**  
**October 29 at 10:00 a.m. - 110 13th Ave NE, Miami, OK 74354**

**Directions:** At the corner of Main St and Steve Owens Blvd head north on Main to 13th Ave NE (just past Zach's Cafe) turn right, first house on the right OR from the corner of Veteran's Blvd and Main St head south on Main to 13th Ave NE, turn left, first house on the right - watch for signs.

Sue and Delmar Barnes were stellar members of the Miami Country Club for decades. Delmar made and repaired golf clubs for many years. After 60+ years Sue has sold her home and is downsizing. Everything offered is exceptionally clean and cared for.

**Kitchen & Household:** Roper side by side refrigerator; kitchenware; white Mikasa china place setting for 12; Pyrex clear glass pans with lids; Pyrex 9X13; microwave dishes; Jewel Tea; stemware; stainless mixing bowls; copper bottom Revereware; 8 Coca Cola drinking glasses; silver rimmed crystal glasses; Flint Ridge china; butcher knives; enamel ware; cast iron skillets (1 Griswold); cookbooks (MHS 1959-2009, Hometown Recipes of Miami 50 years; Heavenly Delights; many diabetic diet, dutch oven); Norman Rockwell mugs and plates; Hallmark Christmas ornaments; Christmas villages; Santas Around the World figurines; all sizes beer steins; Army technical manuals; golf books of all kinds; authentic southwestern tribal souvenirs; petrified wood bookends; some hand painted china

**Charles Banks Wilson:** All prints are framed and include: Awee; Will Rogers; Walt's Pride; Little Buckskin Dancer; Osage Straight Dancer; one CBW book Furniture: Glass dining table & 6 chairs; breakfast table & 4 chairs; heavy barstools; china hutch; corner shelf; decorative wall clock; Hollywood bed frame; handmade wine rack

**Tools:** 8" drill press, radial arm saw, 4" belt sander, 6" disc grinder & sander, 12" bandsaw/sander, toolbox top cabinet, skillsaw, drill - all Craftsman; hand tools (Craftsman and S&K); doweling jig; brad nailers; ext ladder; other misc tools; Old Timers and Buck pocket knives

**Specialty Items:** 75+ golf club shafts; grips; many putter and driver heads; sets of men's and women's golf clubs (inc Patty Berg); golf ball collection incl Peoria Ridge Grand Opening, Bay Harbor, PGA and others

**Vintage Items:** wooden high chair; Chicago roller skates; GI Joe; Walking Cathy doll; metal scooter; Radio Flyer red wagon; Atari 2600A game system with games; Erector Set; saxophone; record player and LP's; 8 tracks; cassettes; hat boxes and black feathered hat; costume jewelry; BF Goodrich multitool, lighter, tie tacks, belt buckle and ashtrays; MHS football programs from the late 60's and early 70's; WRJH spirit buttons; Beatle mania pictures; Beanie Babies;

**Misc:** Shovels; tater fork; clippers; battery weed eater; CharBroil gas grill infrared w/ tank; concrete flower pots; bird bath; crock jug; and much, much more!

**Said sale day supersedes written material.**

**Terms:** cash, check (proper ID), credit and debit cards accepted (4% convenience fee) Items to be removed sale day unless other arrangements made. Not responsible for accidents.

**Masterson Auction Service, LLC**  
 Auctioneer Chad Masterson 918-533-4853

# Farmer's Market

- DIRECTORY -



## BARRY

**Garden Sass Farmers Market**  
7th and Mineral Springs Road  
Cassville, MO  
Saturdays 7a-11a year round

## BARTON

**10TH Street Community Farmers Market**  
Moore Pavilion, 10th and Poplar Sts.  
Lamar, MO  
Saturdays 8am-12pm April through October  
*Our vendors will have farm fresh veggies, honey, baked goods, crafts and Watkins products in the shade of Moore Pavilion.*

## BENTON

**Fayetteville Farmers Market**  
21 West Mountain St.  
Fayetteville, AR  
Saturdays 7a-2p year round  
*Since 1973, the market has offered the finest in locally produced vegetables, fruits, flowers, plants, meats, baked goods, honey, eggs, jams, juried crafts, and fine art from the four-county area. All producers at our market grow and make their products within 60 miles of Fayetteville, AR.*  
[www.farms2familiesbm.com](http://www.farms2familiesbm.com)

**Rogers Farmers Market**  
Frisco Station Mall, 100 N. Dixieland Rd  
Rogers, AR  
Wednesdays & Saturdays, 8a-1p, April-October  
*DTR Market attracts growers and makers from all over the region to sell their goods on Saturday mornings. The market is a great spot for the community to gather offering food, drinks, and access to trails.*  
<https://downtownjoplin.com/joplin-empire-market>

**Bentonville Farmers Market**  
Bentonville Square, 100 South Main St  
Bentonville, AR  
Saturdays, 7:30a-1p, Thursdays, 5p-8p  
*on-line ordering available year round*

## BOURBON

**Fort Scott Farmers Market**  
Skubitz Plaza (in front of the historic fort Fort Scott, MO  
Saturdays 8a-12p, Tuesdays, 4p-6p, May through October  
*a farmer driven and run market. The farmers work hard to produce the very finest produce available.*  
[www.webbcityfarmersmarket.com](http://www.webbcityfarmersmarket.com)

## CHEROKEE

**Columbus Farmers Market**  
202 N. East Kansas Avenue  
Columbus, KS  
Thursdays, 4-6:30pm, beginning May 19th.  
*Produce vendors at the Columbus market will be able to accept Senior Nutrition Vouchers which allow low-income senior citizens to obtain coupons they can use to purchase \$35 worth of fresh produce, honey, and herbs. The Columbus market will again be participating in both the SNAP and Double Up Food Bucks programs this season, to get more healthy, locally grown food into area homes.*

**Baxter's 11th Street Farmers Market**  
11th St. and Military Avenue  
Baxter Springs, KS  
Mondays, 4p-6:30p

**Galena Farmers Market**  
210 W. 7th St  
Galena, KS  
Saturdays 8a-12p, June through October  
*Our friendly open-air farmer's market varies throughout the season, but our vendors regularly sell plants, produce, eggs, honey, baked goods, and occasionally other crafts and products grown or made in the four state area. We're located across the street from the City Hall in the Library parking lot.*

## CHRISTIAN

**Nixa Area Farmers Market**  
Highway 14& Main St  
Nixa, MO  
Saturdays, 8a-12p, April-October  
*Our market was formed in 2003 to serve the Christian County area with locally grown produce.*

**Ozark Farmers Market at Finley Farms**  
844 Finley Farms Lane  
Ozark, MO  
Thursdays, 3p-7p, May-September

## CRAWFORD

**Pittsburg Area Farmers Market**  
Farmers Market Pavilion, 119 E. 11th St.  
Pittsburg, KS  
Saturdays 8am-12pm April through October, Wednesdays 4p-6p, June 8th through August 10th  
*At the Pittsburg Area Farmers' Market, you'll find fresh, locally-grown produce and farm-processed foods. Our vendors offer seasonal fruits and vegetables, meats, baked goods, jams and preserves, nursery plants, flowers and more. Local artisans also sell handmade crafts and home goods. As part of our commitment to providing fresh, healthy foods for everyone in our community, we accept EBT/Vision/SNAP cards.*

**Girard Farmers Market**  
Gazebo on the Square  
Girard, KS  
Tuesdays, 4p - 6pm, July through September  
*All vendors and customers are welcome! You will find amazing things from fresh to unique and everything in between. We hope to see you there!*

## DELAWARE

**Grove Farmers Market**  
103 W. 3rd St  
Grove, OK  
1st Fridays 4p-8p, Saturdays 9a-2p May-September  
*The Grove Farmers' Market is an open air, producer-only market located in beautiful downtown Grove, Oklahoma. All produce and items sold at the market are homegrown/made within 50 miles of the city limits.*

## GREENE

**Farmers Market of the Ozarks**  
2144 E. Republic Road  
Springfield, MO  
Saturdays, 9a-1p  
*Combining farm fresh goodness, hand-crafted products and local eateries, all in one year-round permanent location!*

**Greater Springfield Farmers Market**  
2825 South Glenstone  
Springfield, MO  
Saturdays 8a-12p year round; Tuesdays and Thursdays 8a-12p April-October  
*The Greater Springfield Farmers' Market is currently in its 40th season as the area's original producer only market. GSFM provides a spacious open air market experience which is home to over 75 local producers annually. In addition, the market provides a platform for other non-profit community partners to share in the down home atmosphere of traditional farmers' markets everyone has grown to love.*

## JASPER

**Joplin Empire Market**  
931 E. 4th St.  
Joplin, MO  
Saturdays, All year long, 10am - 2pm  
*Curbside pick-up available. Order Tuesday 8p-Thurs 8p and drive-thru to pick up Saturday between 10:30a-12:30p*

**Carthage Farmers Market**  
714 Garrison St  
Carthage, MO  
Sat and Wed, 8 am-1pm  
*Located at the NW corner of Central Park, the market offers a wide variety of fresh in-season produce, greenhouse plants, honey, jams, jelly, baked goods, and much more.*

**Webb City Farmers Market**  
106 E. Tracy St  
Webb City, MO  
Saturdays, 9am - 12pm  
*Farm fresh produce, baked goods, herbs, jams and jellies, humanely raised meats and so much more can be found at the Webb City Farmers Market. We are a producer-only market so you are buying directly from the farmer, baker, rancher, beekeeper ....*

**Sarcoxi Farmers Market**  
Sarcoxi, MO  
First and third Saturdays of the month, 8am-2pm

## LABETTE

**Parsons Farmers Market**  
North of Forest Park on Broadway between Heacock and 13th Streets  
Parsons, KS  
Tuesdays 3p-6p, Saturdays 8a-11a, April through October  
*The Parsons Farmers Market gives residents throughout southeast Kansas the opportunity to purchase locally grown fruits, vegetables, nuts and honey. In addition, the market has bedding plants, vegetables, hanging baskets, baked goods, handmade jellies, crafts, etc. There is currently no vendor fees at the market.*

**Oswego Farmers Market**  
Schmoker Park  
Oswego, KS  
Mondays and Thursdays, 3p-6p

**Chetopa Farmers Market**  
20 Maple Street at Veterans Park  
Chetopa, KS  
Wednesdays, 4:30p-6p

## LAWRENCE

**Aurora Local Farmers Market**  
Sutherland's Parking Lot, Hwy 60&39  
Aurora, MO  
Wednesdays, 8a-12p, Saturdays 7a-12p, May-October

**Monett Area Farmers Market**  
504. Front St  
Monett, MO  
Saturdays, 8a-12p, April-October  
*The market is proud to be a producer-only market, which means all agricultural products sold at the market are grown within a 75 mile radius.*

**Pierce City Farmers Market "Thyme To Buy Local"**  
97/37 intersection at the Veterans Memorial  
Pierce City, MO  
8a-12p every Saturday, Mid April-Mid December.  
*We are a "home-grown, home-made and home-born" market. Creating a Safe family Community where we create bonds as we support and serve each other. Vendors Welcomed!*

## MCDONALD

**Farms2Families at Bear Mountain**  
On-line  
Pineville, MO  
a 24/7, 365 ONLINE FARMER'S MARKET servicing all NW Arkansas, SW Missouri and SE Oklahoma. We are the LINK between farms and families and serve as an extension of the local Farmer's Markets in our area.

## MONTGOMERY

**Cherryvale Farmers Market**  
Loganville Park  
Cherryvale, KS  
1st and 3rd Saturdays 9a-1pm  
*Come visit our market! We have home-grown produce, baked goods and small business items.*

**Independence Farmers and Makers Market**  
Chestnut & 8th Sts.  
Independence, KS  
Saturdays 7a-11a, May-August; Thursdays 3p-7p, June-October  
*Independence Farmers & Makers Market gives residents of Southeast Kansas the opportunity to purchase locally grown fruits, vegetables, nuts, and honey. In addition, the market has bedding plants, vegetables, hanging baskets, baked goods, handmade jellies, crafts and much more.*

**Coffeyville Community Marketplace**  
10th & Maple Streets  
Coffeyville, KS  
Saturdays 9a-12p, May-October; Tuesdays 5p-7p, May-September

## NEOSHO

**Main Street Chanute Farmers Market**  
Main Street Pavilion, Main and Highland Streets  
Chanute, KS  
Tuesdays 5p-6:30p, May through September  
*We accept SNAP, EBT, debit and credit cards.*

## NEWTON

**Neosho Farmers Market**  
corner of Jefferson and Spring Streets in historic downtown Neosho  
Neosho, MO  
9 to noon on Saturdays, May-October and Tuesdays 4-7 during July and August.  
*Our market features fresh and locally raised produce and fruits. Pasture raised beef, pork, chicken, and lamb in addition to pasture raised eggs. Hand made artisanal style breads, cinnamon rolls, croissants, bagels and a wide variety of sweet treats. Freshly made jams and jellies. Artisan made goods for the kitchen and home.*

**Wentworth Farmers Market**  
104 Spruce St  
Wentworth, MO  
1st & 3rd saturday's of the month, April-October, 11am - 2pm

## OTTAWA

**Ottawa County Farmers Market**  
1129 East St. SW, Miami, OK  
Miami, OK  
Thursdays 3p-6:30p May-October; 1st Saturdays 8a-11:30a, June-October  
*Every week enjoy live music, food tastings, cooking demonstrations, free recipes, and giveaways!*

**Quapaw Farmers Market**  
326 Main St  
Quapaw, OK, OK  
1st and 3rd Fridays 10am-2pm, June through October

## VERNON

**Nevada Vernon County Farmers Market**  
1641 E. Ashland St.  
Nevada, MO  
Saturdays 9-1 May-October, Tuesdays 3-6p June -September

DID WE MISS YOU? IF YOU HAVE A FARMER'S MARKET YOU WOULD LIKE TO HAVE INCLUDED IN OUR LISTING, PLEASE EMAIL THE INFORMATION TO [MBRADLEY@PHILLIPSMEDIA.COM](mailto:MBRADLEY@PHILLIPSMEDIA.COM).

6503259H



IMPORTANT MESSAGE

DID THIS GET YOUR ATTENTION?



Was your answer yes?  
Don't you think potential customers said the same?  
Why not advertise your business here instead?

Contact us today to place your ad here: **417.624.4100**

# MAHINDRA



**#1 Selling Farm Tractor In The World!\*\***

- ✓ Push More
- ✓ Pull More
- ✓ Lift More

**7 YR Powertrain Warranty on Most Tractor Series**  
**MOST MAHINDRA TIER 4 TRACTORS HAVE NO DPF, REGEN, OR DEF**

**ONLY ONE LEFT AT THIS PRICE**



## MAHINDRA 4540

40 HP, 2WD, w/Loader, 8x2 gear trans., 2866 lb. Loader Lift capacity, 3527 lbs. @ 3 pt. hitch, 5192 lbs. tractor weight

Tier 4  
No DPF or Regen

**\$296<sup>18</sup>\*/MO.**

0 DOWN, .99% FINANCING 84 MO WAC



## MAHINDRA 4540 4WD

41HP, 4WD, w/Loader, 8x2 Gear Trans, 2866 lb Loader Lift Capacity, 3527 lb @ 3 pt Hitch, 5192 lb Tractor Weight

Tier 4  
No DPF or Regen

**\$372<sup>69</sup>\*/MO.**

0 DOWN, 2.99% FINANCING 84 MO WAC



## MAHINDRA 2638 HST

38HP, 4WD, w/Loader, Hydrostat Trans, 1650 lb Loader Lift Capacity, 2646 lb @ 3 pt. hitch, 3130 lb Tractor Weight

Tier 4  
No DPF or Regen

**\$360<sup>27</sup>\*/MO.**

0 DOWN, 84 MO FINANCING WAC



## MAHINDRA 2660 4WD

60HP, 4WD, w/Loader, 12x12 Power Shuttle Trans, 1 set Remotes, 3100 lb Loader Lift Capacity, 3314 lb @ 3 pt Hitch, 4500 lb Tractor Weight

Tier 4  
No DPF or Regen

**\$486<sup>56</sup>\*/MO.**

0 DOWN, 3.99% FINANCING 84 MO WAC

**MAHINDRA 6065 CAB**  
**\$672<sup>48</sup>\*/MO.**  
 Tier 4 No DPF or Regen  
 0 DOWN, 84 MO FINANCING WAC  
 62HP, 4WD, w/Loader, Cab w/H&A, 12x12 Power Shuttle Trans. **CALL FOR CASH PRICE**

## MAHINDRA PACKAGE DEALS

### MAHINDRA 1626 SHUTTLE

25 HP, 4WD, w/Loader, w/ 5' Brush Cutter & 5' Box Blade

Call for Cash Price **\$314<sup>57</sup>\*/MO.**

0 DOWN, 2.99% 84 MO FINANCING WAC

### MAHINDRA 1635 SHUTTLE

35 HP, 4WD, w/Loader, w/ 5' Brush Cutter & 5' Box Blade

Call for Cash Price **\$366<sup>99</sup>\*/MO.**

0 DOWN, 84 MO FINANCING WAC

### MAHINDRA 1626 HST

25 HP, 4WD, w/Loader, w/Mahindra 5' Brush Cutter & 5' Box Blade

Call for Cash Price **\$337<sup>68</sup>\*/MO.**

0 DOWN, 2.99% 84 MO FINANCING WAC

### MAHINDRA 1640 SHUTTLE

39HP, 4WD, w/Loader, w/5' Brush Cutter, & 5' Box Blade

Call for Cash Price **\$393<sup>86</sup>\*/MO.**

0 DOWN, 2.99% 84 MO FINANCING WAC

### MAHINDRA 2638 HST

38HP, 4WD, w/Loader, w/5' Brush Cutter & 5' Box Blade

Call for Cash Price **\$396<sup>41</sup>\*/MO.**

0 DOWN, 84 MO FINANCING WAC

## USED EQUIPMENT

(M) MO • (A) ARK

(M) MAHINDRA 1538, 38HP, 4WD, W/LOADER, HST TRANS.....	\$15,900
(M) MAHINDRA EMAX 22, 22HP, 4WD, W/LOADER, GEAR TRANS ...	\$ 9,900
(M) MAHINDRA 5570, 70HP, 4WD, W/LOADER, 8X8 SHUTTLE TRANS ...	\$24,900
(M) MAHINDRA 6530, 65HP, 4WD, W/LOADER.....	\$22,900
(M) MAHINDRA 2540, 40HP, 4WD, W/LOADER.....	SOLD \$17,900
(M) KUBOTA L3400, 34HP, 4WD, W/LOADER, GEAR TRANS.....	\$16,900
(M) MAHINDRA 2555 CAB, 55HP, 4WD, W/LOADER, H&A.....	SOLD \$28,900
(M) NH WORKMASTER 45, 45HP, 2WD, W/LOADER.....	SOLD \$16,500
(M) MAHINDRA 6075 CAB, 71HP, 4WD, W/LOADER, CAB W/H&A.....	\$38,900
(M) MAHINDRA RETRIEVER 750 UTV 4X4.....	\$9,900

**Tatum Motor Company**  
 FARM TOOLS SINCE 1889

931 N. BUS. HWY. 71  
 ANDERSON, MO  
 417-845-3563  
 HOURS M-F 8-5 • SAT 8-NOON

1033 W. HENRI DE TONTI BLVD  
 (412 WEST), TONTITOWN, ARK  
 479-361-9488  
 HOURS M-F 8-5 • SAT 8-NOON

**Mahindra Rise.**  
 www.tatummotor.com  
 e-mail: tatumtr@olemac.net

**MAHINDRA SUPERIOR PERFORMANCE:**  
 • Heavy-duty components: Tough & rugged... Keep right on performing day after day.  
 • Sturdier chassis: Greater stability... Keeps you safe while handling rigorous work.