

CELEBRATING  
OVER  
**40**  
YEARS



# BIG NICKEL

THURSDAY,  
SEPTEMBER 09, 2021

© Phillips Media Group, Inc. 2021. All Rights Reserved

2918 E. 20th St. • Joplin, MO 64802  
417-624-4100 or 1-800-749-9889

www.bignickel.com

Volume XLVI Issue 36

**R6 RECYCLING**  
**WE PAY CASH**  
for Scrap Metal  
918-675-4118  
620 North Park Circle  
Commerce, OK 74339

**DISPENSARY EXTRAORDINAIRE:**  
Large selection of flower, concentrates, edibles and bath and body products.

**HEAD SHOP**  
with all the latest and greatest in smoking accessories and gifts.

**GROW SUPPLY**  
with everything you need to grow your own.

**THE CORN POPPER**  
popcorn and concession supplies available.

**OUR DAILY SPECIALS**  
**MUNCHIE MONDAY** - 25% OFF edibles  
**T-SHIRT TUESDAY** - 25% OFF for wearing a 420 ReLeaf t-shirt  
**WACKY WEDNESDAY** - 25% OFF all vape cartridges  
**THIRSTY THURSDAY** - 25% OFF beverages & tonics  
**FRIED DAY** - 25% OFF ALL flower  
**SHATTER DAY** - 25% OFF extracts & concentrates (excludes vape carts)  
**SUNDAY FUNDAY & SPA DAY** - Roll the dice for a chance to win a gram or an eighth, & 10% OFF bath & body products.

**EVERYDAY SPECIALS**  
1 gram vape carts \$20 ALL DAY EVERYDAY! 1 gram concentrate starting at \$21<sup>00</sup> **4:20 SPECIAL:** ANY preroll (large selection) for 50% OFF (1 per patient) from 4:20 to 5:20 daily  
**FIRST TIME PATIENTS RECEIVE 20% OFF**  
**NO CARD NEEDED TO VISIT!**  
**CARD ONLY NECESSARY TO SEE DISPENSARY.**

In Historic Downtown Grove  
21 W 3rd St.  
Grove, OK 74344  
918-791-3420  
www.420releaf.com

**ATTENTION!**

**BUYING ALL VEHICLES, TRACTORS,** \$

FARM EQUIPMENT, CLASSIC CARS AND TRUCKS. Everything on property. "Call me before you sell!"  
417-830-4685.

**WANTED**

BUYING JUNK CARS! We pay cash! No title needed. We pick up. Call/text 918-961-0368.

\$ **CASH PAID** for junk cars, trucks, or vans. Paying for small \$150 & up; Larger- up to \$500. Titles only. 7 days a week. Text us a picture of your car to 417-389-1333.

PAYING TOP Dollar for junk autos, small \$100/up, large up to \$300. No titles OK.  
417-437-0605.

**CASSVILLE ROTARY CLUB**  
19th Annual  
Demolition Derby-7pm  
Saturday, Sept. 11th, 2021  
Bill Hailey Rodeo Arena,  
Cassville, MO  
Adults \$10; Children \$5.  
217-306-4025  
www.gsademoderby.com

**HARDWOOD PRATER PRODUCTS**  
EST. 1903  
Sawmill/Logging 918-919-9764  
We Buy Standing Timber

**WANTED**

LOOKING FOR property to lease for hunting, south of Joplin. 417-291-7092.

VIAGRA USERS, 30 day guarantee. Why pay more, (40) 100 milligram tablets, \$169. Call 1-800-607-2519, open everyday.  
**WWW.BIGNICKEL.COM**

BE AN EARLY BIRD! Place your ads before Monday and beat the rush!

**Midwest STORM SHELTERS**

JOPLIN, MISSOURI  
MIDWESTSTORMSHELTERS.NET  
midweststormshelters.net  
0% Financing available to 12 months.  
ATSA CERTIFIED storm shelters. 10 year warranty. Picked up Concrete units starting at \$2500. Packages with installation starting at \$3350. Includes taxes and digging. Steel Safe Rooms starting at \$3765 +tax installed. Serving the entire 4-State area and beyond for 18 years. See us at 12423 Hwy. 59, Neosho, MO.  
417-781-9718.

NEED SOMETHING? Let us help you. You can advertise that you are looking for a special item.  
Call 417-624-4100 for more information.

Please place classified ads on The Big NICKEL website. Our web address is www.bignickel.com

**MOVING AUCTION**

Fri., Sept. 10th, 9:36am  
17794 S. 580 Rd.  
Fairland, OK  
Mahindra 1626 tractor with 27 hours; new finish mower; trailers; tools; lots of western and rustic furniture and decor; guns; and much more!  
Owners:Troy & Mary Parrish  
lestermillerauctions.com  
918-533-6404

**Want to BUY Junk cars and trucks!**  
Paying top dollar!  
Also buying old signs, gas pumps, etc.  
You Call- We Haul!  
417-438-1614.

**TYM TRACTORS**

**TYM T394**

- 38HP YANMAR
- 4WD - HYDROSTAT TRANSMISSION
- W/LOADER

**\$21,950**  
72 MONTH WARRANTY

**GATEWAY FARM EQUIPMENT**  
9723 GATEWAY DRIVE • NEOSHO, MO  
417-451-0821 • www.gfeneosho.com

**Celebrating 30 Years in Business!**

**Bathrooms**  
Polystone • Cultured Marble • Onyx

Polystone • Cultured Marble • Onyx  
Showers, Bathtubs, Vanity Tops, Window Sills  
CUSTOM MADE IN NEOSHO MISSOURI

**NEOSHO MARBLE**  
Family Owned and Operated Since 1991

www.neoshomarble.com  
SHOWROOM LOCATION  
18414 Highway 59, Neosho, MO 64850 | 417-455-0470 | M-F 8:30 - 4:30



# BIG NICKEL

The Big Nickel is published every Thursday.  
© Phillips Media Group 2021. All Rights Reserved

## BIG NICKEL

2918 E. 20th • P.O. Box 1567 • Joplin, MO 64802  
417-624-4100 • Fax: 417-621-0287  
EMAIL: classified@bignickel.com  
www.bignickel.com

The publisher reserves the right to edit, classify, or reject any advertising copy. The Big Nickel assumes no financial responsibility for typographical errors in advertising or for omission on any advertisement further than the amount received for payment of such advertising in which the error occurred. Advertisers should check their advertising for accuracy when ad appears. The Big Nickel is not responsible for errors after the first insertion. One copy FREE per reader. Additional copies available only upon request. Payment by check authorizes The Big Nickel to electronically collect returned checks, plus \$25 service charge. Stopped or cancelled classified ads will receive an in house credit, good for 12 mos. No Cash/Credit Card Refunds! Copyright 2020. All rights reserved.

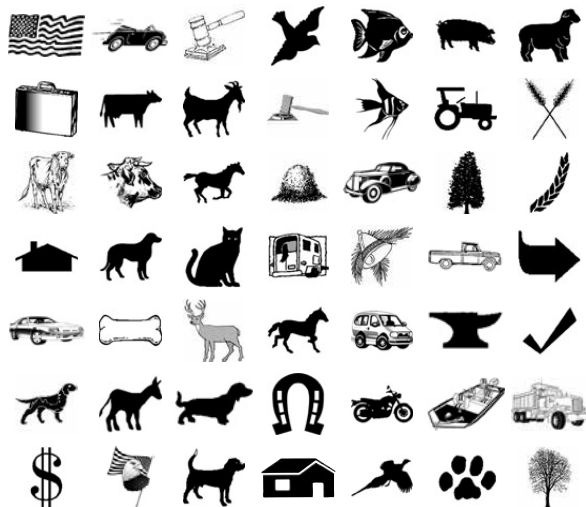
### Big Nickel Classified Options

To place a classified Call 417-624-4100,  
e-mail classified@bignickel.com

When you place a classified with the Big Nickel you have many options to enhance your classified and make it stand out above the others. Here are a few of the options available:

- Boxed \$2.00 • Bold & Capitalize [First 5 Words] \$2.00
- Graphic Options \$3.00 ea. • Super Graphic \$5.00
- Include Email address \$2.00 • Add a Picture \$10.00
- Include URL \$2.00 • 100% Reverse [Boxed/Boldcaps] \$5.00

#### Some of our Available Graphics



### Available Classifications

#### A Section

Auto Parts & Services  
Auto Racing & Related  
Boats & Watercraft  
Classic Vehicles  
Commercial Equipment  
Computers & Electronics  
Construction/Home Imp.  
Furniture & Appliances  
Health & Fitness  
Heavy Trucks & Equipment  
Help Wanted  
OTR & Driver Opportunities  
Miscellaneous  
Business Opportunities  
General Services  
Mobile/Manufactured Homes  
Motorcycles & ATVs  
Music

Pets  
Rebuilders  
Recreation/Entertainment  
RVs

#### Real Estate

Lake/Resort Property  
Homes for Sale  
RE/Homes for Rent  
Real Estate Wanted  
Commercial Property  
Farm/Acreage  
Lots/Land

#### Vehicles for Sale

Passenger Vehicles  
Pickups  
Vans  
4x4s  
Sport Utility Vehicles

#### B Section

Antiques/Flea Markets  
Auctions  
Farm Equipment  
Farm Miscellaneous  
Guns & Sporting Goods  
Lawn & Garden  
Metal Buildings  
Wood  
Yard/Garage Sales  
**Livestock**

Cattle  
Down the Trail  
Horses & Mules  
Misc. Livestock  
Exotic Animals  
Sheep & Goats  
Pasture, Feed & Seed  
Trailers & Tack

### A Section Index

Auto Parts & Services.....Page 08  
Classic Vehicles.....Page 08  
Const. & Home Imp....Page 07  
Guns, Ammo,  
Knives Directory.....Page 06  
Heavy Trucks & Equip. ....Page 08  
Help Wanted .....Page 07  
OTR & Driver Opp.....Page 07  
Mfg. Housing .....Page 07  
Miscellaneous.....Page 02  
Business Opp.....Page 07  
Motorcycles.....Page 08  
Music.....Page 07  
Pets.....Page 07  
Real Estate.....Page 07  
Homes for Sale .....Page 07  
RE/Homes for Rent...Page 08  
Commercial Prop .....Page 08  
Farm/Acreage.....Page 08  
Lots/Land.....Page 08  
Recreational  
Vehicles.....Page 08  
Service Directory.....Page 05  
Under \$100 or Free...Page 07  
Vehicles For Sale. ....Page 08  
Passenger Veh. ....Page 08  
Pickups.....Page 08  
4x4s.....Page 08

## MISCELLANEOUS

# Delta8 THC Gummies

Kratom Joplin MO LLC  
1806 N East Street  
Webb City MO

# vapes gelcaps tinctures

Home of Sheeba's  
Therapeutics

Come meet Sheeba the monkey

Kratom \$10 Oz

KratomJoplin.com

JM-00098128

BOOK NOW! CURRENT SPECIALS! • BOOK NOW! CURRENT SPECIALS! • BOOK NOW! CURRENT SPECIALS!

## GARAGES & MORE

Licensed • Bonded • Insured  
Servicing Missouri, Oklahoma, & Kansas



### 30x40x10

- (2) 10x9 Overhead Doors
- (1) Entry Door
- 4" Reinforced Concrete Floor

Only \$26,456\*

\*travel and taxes may apply  
Price subject to change due to rising material costs.

### 30x50x10

- (2) 10x9 Overhead Doors
- (1) Entry Door
- 4" Reinforced Concrete Floor

Only \$29,174\*

\*travel and taxes may apply  
Price subject to change due to rising material costs.



- 29-gauge metal
- Engineered Trusses
- 40-year paint
- Treated square posts
- 22 colors
- Reinforced concrete floor
- Double-Bubble Insulation Available

www.garagesandmoreonline.com

Windows & doors can be added to these Packages.  
We no longer build in ARKANSAS



Jonathan  
417-455-4633

Marcus  
417-455-3412

BOOK NOW! CURRENT SPECIALS! • BOOK NOW! CURRENT SPECIALS! • BOOK NOW! CURRENT SPECIALS!



## BIG NICKEL DEADLINES

### CLASSIFIED LINE AD DEADLINES

AUCTIONS	B SECTION	A SECTION	VEH SECTION
10am • Mon.	10am • Mon.	3pm • Mon.	3pm • Mon.

### DISPLAY AD DEADLINES

AUCTIONS	B SECTION	A SECTION	VEH SECTION
Noon • Wed.	Noon • Thurs.	Noon • Thurs.	Noon • Thurs.



**Security Cameras**  
for Farms, Small Business,  
Schools & Government



**Peace  
of Mind!**

The feeling you get  
with a security system  
from **On Sight 24/7**



"On Sight 24/7 is a relatively inexpensive great security option. It allows us to monitor those coming and going, even at night with infrared. We've used the same system now for over 5 years. Competent techs and kind and helpful staff makes for a worthwhile security system." - C. Heins

**FREE  
SECURITY  
ASSESSMENT!**  
(\$150 Value)

UP TO  
**\$250 OFF**  
YOUR ORDER\*

\*Some restrictions may apply, call for details.



Ask about our 90 Day  
Try Before you buy!



PROFESSIONALS YOU CAN TRUST.

Proudly Serving the Midwestern United States since 2012.

**SERVICES. SOLUTIONS. SUPPORT.**

**417.680.0749**

JM-98777

**MISCELLANEOUS**



14TH ANNUAL  
KAN-OKLA  
100+ MILE SALE!  
September 10th & 11th  
(12) towns participating along  
Hwys. 75 & 60 (NE Ok-  
lahoma), Hwys. 166 & 169  
(SE Kansas).  
Information:  
[kanoklahighwaysale.net](http://kanoklahighwaysale.net)  
918-214-2443  
Vendor space available.

**BLACK DIRT** for sale, can  
haul. 417-850-1726.

**MISCELLANEOUS**



**ROCKY-MART**  
Antiques & Collectables  
Flea Market  
21841 E. Hwy 76  
Rocky Comfort, MO  
Call 417-652-3538  
or 417-847-7518  
**Old and New Items**  
Welcome  
Open 7 days a week  
from 10am to 6pm.  
Booth Rentals Available

[WWW.BIGNICKEL.COM](http://WWW.BIGNICKEL.COM)

**GOD IS GOOD**

**FAIRVIEW DISCOUNT**  
Groceries and More



**Mon. - Sat.**  
**8:00 am - 5:00 pm**  
**Closed Sundays**

**Amos Yoder**  
31536 Palm Rd.  
417-632-0901

JM-00097991

**MISCELLANEOUS**

CASE TRACTOR 841, gasol-  
ine, 60's model, \$1000; 42' by  
Jeffboat, Sunliner houseboat,  
\$3000 or will consider trade;  
Free sailboat; 35 ft. 5th wheel  
camper, \$1000; pull behind  
camper, fixer upper, \$300;  
1995 Motorhome, Pursuit,  
\$6000, will consider trade.  
2001 PT Cruiser, \$1500 or best  
offer. 918-314-3851.

**MISCELLANEOUS**



WANTED TO buy: Split and  
Seasoned Firewood for  
Daniels Wood Lot at  
MO/ARK stateline on Hwy.  
71 and Bearhollow Road.  
417-846-3325 or 479-721-  
4119.

**FREE CELL PHONE WITH FREE MINUTES**

If you, or someone in your household, participates in a qualified federal assistance programs, or are 135% below the poverty level, you may qualify for a FREE Cell Phone with FREE Monthly Minutes.

- Supplemental Nutrition Assistance Program (SNAP)
- Federal Public Housing Assistance (FPHA)
- Supplemental Security Income
- Veterans Pension & Survivors Benefit
- Tribal Programs (and live on federally-recognized Tribal lands)
- Medicaid

**Call Today to See if You Qualify!**

Lifeline is a non-transferable government assistance program limited to one discount per household. Only eligible consumers may enroll. Proof of income or program participation is required. Easy Telephone Services Company d/b/a Easy Wireless is the eligible telecommunications carrier.

**EASY.** wireless  
Customer Service: 877.476.3451  
[www.MyEasyWireless.com](http://www.MyEasyWireless.com)

JM-00099328

**MISCELLANEOUS**



**BUYING CLASSIC**  
antique cars and  
trucks. Running or  
not. Also gas pumps, tract-  
ors, farm equipment, old  
signs, and running newer  
vehicles. I pay cash up to  
\$1000/up. I buy one or all on  
property.  
Honest, trustworthy, and fair.  
Call ME! 417-234-5154.

HAVING A garage sale or rum-  
mage sale? Call us for special  
pricing. 417-624-4100.

**MISCELLANEOUS**



**CASH BUYING**  
COINS, WATCHES, GOLD,  
SILVER, SAFES,  
ARROWHEADS,  
RIFLES, PISTOLS, AMMO  
ELECTRIC WHEELCHAIRS,  
MOBILITY SCOOTERS,  
OAK ANTIQUES,  
JEWELRY, ANVILS,  
GUN COLLECTIONS.  
417-437-5317 DR. HAMLIN

MOWING LAWNS; Moving fur-  
niture; Hauling off junk batter-  
ies, appliances, and scrap met-  
al. 417-388-8506.

**Joplin Rental Center**  
Equipment Rentals & Sales  
1617 W. 10th Street, Joplin, MO 64801  
**LOCALLY OWNED**  
Call The Competitors... We'll Prove We're The Best!!  
Contractors, Home Owners, come see us or call:  
**417-624-1671**  
[www.joplinrentalcenter.com](http://www.joplinrentalcenter.com)

• Concrete  
• Earthwork  
• Aerial  
• Garden  
• Much More...

**We Do Appreciate Your Business!**

JM-00061795

**WINDOWS FOR LESS**  
The Best Deal Ever

**Lifetime Warranty**

**417-825-5551**  
www.windowsforlessmo.com

**MISCELLANEOUS**

**ROLL-OFF DUMPSTERS**  
For Roofing, Remodeling, CLEAN UP  
New Construction, or rental clean outs.  
Covering Southwest Mo including Jasper/ Sarcoxie Neosho / Seneca / Joplin.  
CDR, LLC.  
417-317-4817.

**WANTED**  
CASH PAID for unwanted R-12 Freon. Tim 918-260-0020.

**MISCELLANEOUS**

**BARBARA HAVER TRUST AUCTION**  
Fri., Sept. 17th, 9:36am  
2141 CR 358 EUCHA, OK  
Boats, Welders, tools, antiques and collectibles, 60 years accumulation.  
lestermillerauctions.com  
918-533-6404

**NEW CROP TOMATOES. U-PICK AND CANNING.**  
10 miles west of Monett on Hwy 60. 10am-4pm.  
417-476-5454.

*Are you a veteran? Or family member of a veteran?*

**WE WANT TO BUY YOUR MILITARY ITEMS**  
SINGLE PIECES TO COLLECTIONS

**Military Collectors Services**  
126 N. Webb - Webb City, MO  
417-850-0011  
marionliles@yahoo.com

31+ years experience Free Estimates

**The - Shetler's JJ BUILDERS & EXCAVATING**  
Also Buyer of Standing Timber  
Specializing In  
Pole Barns, Houses, Horse Barns, Garages, New Roofs: Metal or Shingle. All kinds of Concrete Work Water Drainage, Landscaping, Building Sites, Driveways & Much More!  
Quality work at a lower price

John and Caroline Shetler  
1185 Rt. E, Lockwood, MO  
Call or text 417-205-8780

**BUDGET BOX MOBILE STORAGE**  
WWW.BBCONTAINER.COM  
417-782-7788

Dry, Secure, & Rodent Tight!!

5745 Hwy 43, Joplin, MO  
(1 1/4 mi south of Petro on Hwy 43)

**~ CARNAL CHRISTIANITY IS COSTLY TO AMERICA ~**

Some may wonder why there is so much division and problems in America where there seems to be a lot of churches. In fact, many in some towns. Now church attendance may not be what it used to be but, never the less, there are some that are attending. The problem is who the people are that call themselves a Christian.

Quite a few still consider themselves a Christian but they live far from what the Bible says a Christian should be and here's where America's problems lay. The Bible is the guideline of the instruction manual and, sad to say, most people have little knowledge of its truth and the power of its words. Some live below what they could become to a world that needs them to be light in darkness.

People cannot claim the promises of God and then just dress like everyone else, going all the same places, watching all the same movies and televisions programs and using the same foul language. You cannot be involved in sex outside of marriage, watching pornography, live as you please against what God's standards are for living.

So, we have carnal Christianity with no power in prayer unable to lead other people to the truth and its costing America to decay now quickly. Because, like the Bible says, knowing of the power of God but not having it within. Christians must obey God's ways not humanities standards or they'll never have enough ability to see our nation return to God as it must or else.

Mark Taylor is the President of Sky High Broadcasting, as well as an author, columnist and speaker. You can contact him at mtaylor@kneo.org, or follow him on Twitter @kneo917



**KNEO 91.7**  
RADIO THAT IMPACTS YOUR FUTURE

417-451-KNEO (5636)

**Listen Live at kneo.org**

10827 Hwy 86 East, Neosho, MO 64850

**MISCELLANEOUS**

**POULTRY HOUSE REMOVAL** We buy good quality chicken and turkey houses. Remove the houses and all deconstruction debris. Local professional crews. Serving since 1992.  
Cedar Creek Contractors, LLC 785-217-3379.  
WWW.BIGNICKEL.COM

**MISCELLANEOUS**

**15TH ANNUAL Farmers Feeding Neighbors Hay Auction**  
The 15th Annual Farmers Feeding Neighbors Hay Auction will be held on Saturday, September 11 at the Seneca Rodeo Grounds, Hwy 10 & Bethel Road, Seneca. Merchandise to be auctioned in addition to hay will be certificates or merchandise from area businesses and individuals, homemade treats of every kind from pies and cakes to cookies, brownies and home-canned delicacies of jellies, preserves, salsa, floral arrangements and other miscellaneous items. Auction will be held in the giant tent, rain or shine. The cookout at 4:00 pm is open to everyone for a donation. It features delicious hamburgers, hot dogs, chips and all the trimmings along with a drink and dessert. The auction begins at 6:00 pm and continues until everything has been sold. Everyone is welcome! Come out and support the less fortunate in our community while having a delicious dinner and a hilarious and entertaining evening with your friends.

SELLING 45 rpm record collection, from late 40's thru late 80's, and other items. Call 479-936-4552. No money, don't call!

**GOT OLD BATTERIES LYING AROUND? TURN THEM INTO CASH! Lead acid vehicle batteries CALL FOR PRICING!**

**CASH FOR BATTERIES**

Rogers, AR • 479-631-2346  
Joplin, MO • 417-624-2421  
Golden, MO • 417-271-3801  
Springfield, MO • 417-889-5245

**Battery Outfitters**  
YOUR NEIGHBORHOOD BATTERY STORE

**MISCELLANEOUS**

CUSTOM WIDE plank T&G flooring, paneling, oak trailer floor, barn and corral lumber, custom sawing, also, have bundles of slab.  
Chapman Sawmill  
417-451-0072  
417-438-5507

SOUTHWEST CONTRACTORS  
YOUR LOCAL metal roofing contractor. Various colors available. Free estimates. General construction.  
417-434-3266.

WANTING TO buy junk or rebuildable vehicles for cash. Call or text 417-396-6319.

**MISCELLANEOUS**

BEAUTY SHOP in Joplin, ready for you to open. Perfect location at 1806 Main. Has (4) stations easily expanded to (6). Make an appointment to be impressed with this salon and hear about allowances. Randy Stanley. 417-396-3616.

FAYETTEVILLE, AR Fairview Memorial Gardens grave plot. Located in the Last Supper overlooking the pond. Double depth lawn crypt, vault is in the ground. \$3000 or best offer. 419-737-6209.

**WANTED**  
PICKUP DRIVERS to sell produce. Drive your truck or mine. Paid cash daily. 417-312-7808 or 479-721-4119.

VIAGRA USERS, 30 day guarantee. Why pay more, (40) 100 milligram tablets, \$169. Call 1-800-607-2519, open everyday.



# SERVICE DIRECTORY

To Advertise your service or business in this special section

**\$40<sup>00</sup>**  
A Month

Call Grace: 417-624-4100

## ASPHALT SEAL COATING

### SIMON'S ASPHALT, MAINTENANCE & SEALING

Seal coating, hot rubber crack filling, asphalt & paving, **CHIP & SEAL**. Free Estimates. 7 days a week availability on jobs. Serving the 4-state area. 417-291-0727 or 417-434-8881.

## BATHTUB REFINISHING

### REPAIR OR REFINISH

Fiberglass or preclain bathtubs. For a free estimate call Rick at 417-626-7882 [rwprotub@gmail.com](mailto:rwprotub@gmail.com)

## COMPUTER REPAIRS/SERVICES

### COMPUTER REPAIR, FREE ESTIMATES

Buy \* Sell \* Trade \* Recycle  
**Joplin Computer Company**  
930 S. Joplin • 417-782-1533

## CONCRETE & EXCAVATING

### CONCRETE WORK,

Commerical/Residential. Walls, Floors, Flat Work. Tear-out and replace. Licensed, Bonded, Insured. 417-439-5717 • 417-438-0864

## CONSTRUCTION & HOME IMP.

### GRUMPY GRANDPA HANDY MAN SERVICE

Insured and Bonded. 417-793-4078

### PROFESSIONAL FLOOR LEVELING, AND JOIST REPLACEMENT.

Licensed, Bonded, Insured. 417-439-5717 • 417-438-0864

### D&M CONSTRUCTION & REMODELING, LLC.

Specializing in doors, windows, install windows any size for \$150, & siding, all types of carpentry. Metal roofing. Senior Discounts. Licensed, Bonded & Insured. Dave McElhaney 417-483-4113 OR 417-529-4377

### PROFESSIONAL REMODELING & BUILDING.

Garages, Shops, Room Additions, Bathroom Add-Ons.

Prices to fit your pocketbook! Licensed, Bonded, Insured. 417-439-5717 • 417-438-0864

### JOPLIN RENTAL CENTER

Call the competitors... We'll prove we're the Best!! Contractors, Home Owners, come see us or call 417-624-1671. Concrete, earthwork, aerial lifts, garden. Locally owned. [www.joplinrentalcenter.com](http://www.joplinrentalcenter.com)

## DRYWALL REPAIR

### CRAIG'S DRYWALL REPAIR

Do you have cracks in your ceilings or walls?  
• Can Repair • Popcorn removal • Retexturing  
• Loose tape joints • Ceiling stains • Mold removal.  
Same day, same service. Insured, Free Estimates. 5 Star Rating. M-F 7am-5pm, Sat. 8am-Noon  
Serving the Joplin/Springfield area for over 40 years. 417-430-9544 • 417-499-7718

## ELECTRICIAN

### LICENSED ELECTRICIAN

New Service, Remodel Service & Repair For All Your Needs 417-483-7478

## ESTATE SALES

### THE ESTATE LIQUIDATORS OF MISSOURI LLC

Email: [Estateliquidatorsofmo@yahoo.com](mailto:Estateliquidatorsofmo@yahoo.com)  
Estate Sales • Moving Sales  
• Downsizing Sales  
We offer a **DISCOUNT** that (puts more \$money in your wallet)  
**(CALL TO SCHEDULE YOUR FREE ESTIMATE)**  
Phone: 417-291-8363

## EXCAVATING

### TICE EXCAVATION LLC

Land Clearing, Brush Removal, Ponds Seneca, MO 417-592-4636 • Tim Tice- owner

**JOPLIN RENTAL CENTER** has updated it's complete line of dirt working equipment. Mini excavators, from 2000 lbs-72,000 lbs.

13HP-100HP, skid steers, wheel & track. Call us, we will help you fit the machine to your need! 417-624-1671 1617 W. 10, JOPLIN 64801

### MARK LOTT'S EXCAVATING

Specialized in pond building, repair and cleanout, land clearing, drive-ways, fence rows, pads, footings, some demolition, cleanup and haul off, dump truck services, also skidsteer and excavator available. 417-434-0585

### DUMP TRUCK Services, black dirt,

creek rock, Skid steer work, Land clearing, Bush Hogging, Pads & Driveways. Donnie 417-291-8916.

## HAULING

### HAULING

Black dirt, garden compost, fill dirt, mulch, driveway limestone, river rock, asphalt, skidsteer work. Weekend delivery available. 417-291-0727

### HAUL AWAY SERVICES

Junk; Rubbish; Furniture; Appliances; Debris; Garage/Yard items. **JUST GET ORGANIZED!** 417-825-7003 Serving 4 State Area for 15 years.

## HEALTH INSURANCE

### FD INSURANCE AGENCY

417-708-9288

Need Health Insurance? Call for a **FREE** quote.

We have been helping families enroll in health insurance with carriers you know and trust for over 30 years! With the American Rescue Plan, 4 out of 5 enrollees will be able to find a plan for \$10 or less/month after premium tax credits.

## LAWN & GARDEN

### T & M LAWCARE

Lawn care, Landscaping & Stump Removal **FREE ESTIMATES** Tim 620-202-0005 Jared 620-238-6987

### FIRE PITS, OUTDOOR KITCHENS & PATIOS, AERATION, HYDRO-SEEDING & SODDING.

Irrigation, installation, & repair. Retaining walls, sandstone patios & flowerbeds. Full service lawn, landscape and lawn care. Free Estimates. Licensed, Bonded & Insured. **R&D LAWN CARE & LANDSCAPING** 417-438-6590

## MACHINE QUILTING

### MACHINE QUILTING

1¢ per sq. inch Backing & Batting available. Quilts for sale. Layaway now for Christmas Holiday Decorations. 918-440-8686

## ORGANIZING

### TOO MUCH STUFF?

We Buy Most Anything. Estates/full or partial. Appliances; furniture; patio; outdoor items; tools; jewelry, gold, silver items; (We also do Estate Sales).

**JUST GET ORGANIZED** 417-825-7003 Suzanne

### JUST GET ORGANIZED! SERVICES WE OFFER!

\*Organize, set-up, and hold sales. \*Downsizing \*Moving \*Estate (Residential & Commercial) homes and small and medium farms. \*Clean up property. \*Haul off unwanted items. \*Help prepare home/property for sale. \*Advise on staging home for sale. \*Pack for moves. \*Buying gold and silver (jewelry, flatware, coins) Serving the area for 15 years. Large following of buyers to our sales. **Just Get Organized! Free Estimates.** Suzanne 417-825-7003

## PAINTING

### "PERFECTIONS UNLIMITED" PAINTING/REPAIRS

Priority One is Customer Satisfaction Quality Work, Prompt-Reliable, Reasonable Prices, Local References, Free Estimates 24/7. Husband & Wife Team 417-317-3863 or 417-952-7901

## POWER WASHING

**POWER WASHING**, 15 years experience. **YEAR ROUND SERVICE.** References. Call today for a free on-site quote. **CALL KENNY 417-229-2697**

## ROOFING

**MOBILE HOME ROOFS** 14x70 colored metal mobile home roofs w/insulation \$2,475. All prices include material & labor. Other sizes available. Also metal house roofs. 417-839-5481 • **GINGERICH BUILDERS**

### RESIDENTIAL & COMMERCIAL METAL ROOFING & REROOFING.

Regular rib or standing seam. (Hidden fasteners). 40 year warranty. (22) colors. Satisfaction guaranteed! Servicing the 4-State Area! Free Estimates! **YODER CUSTOM CONSTRUCTION, LLC. 417-388-0613**

## STUMP REMOVAL

**TREE STUMP** removal, fast, efficient, affordable. Free estimate. 417-623-5510, **TERRY VREELAND**

### JB SKIDSTEER SERVICE Stump Grinding.

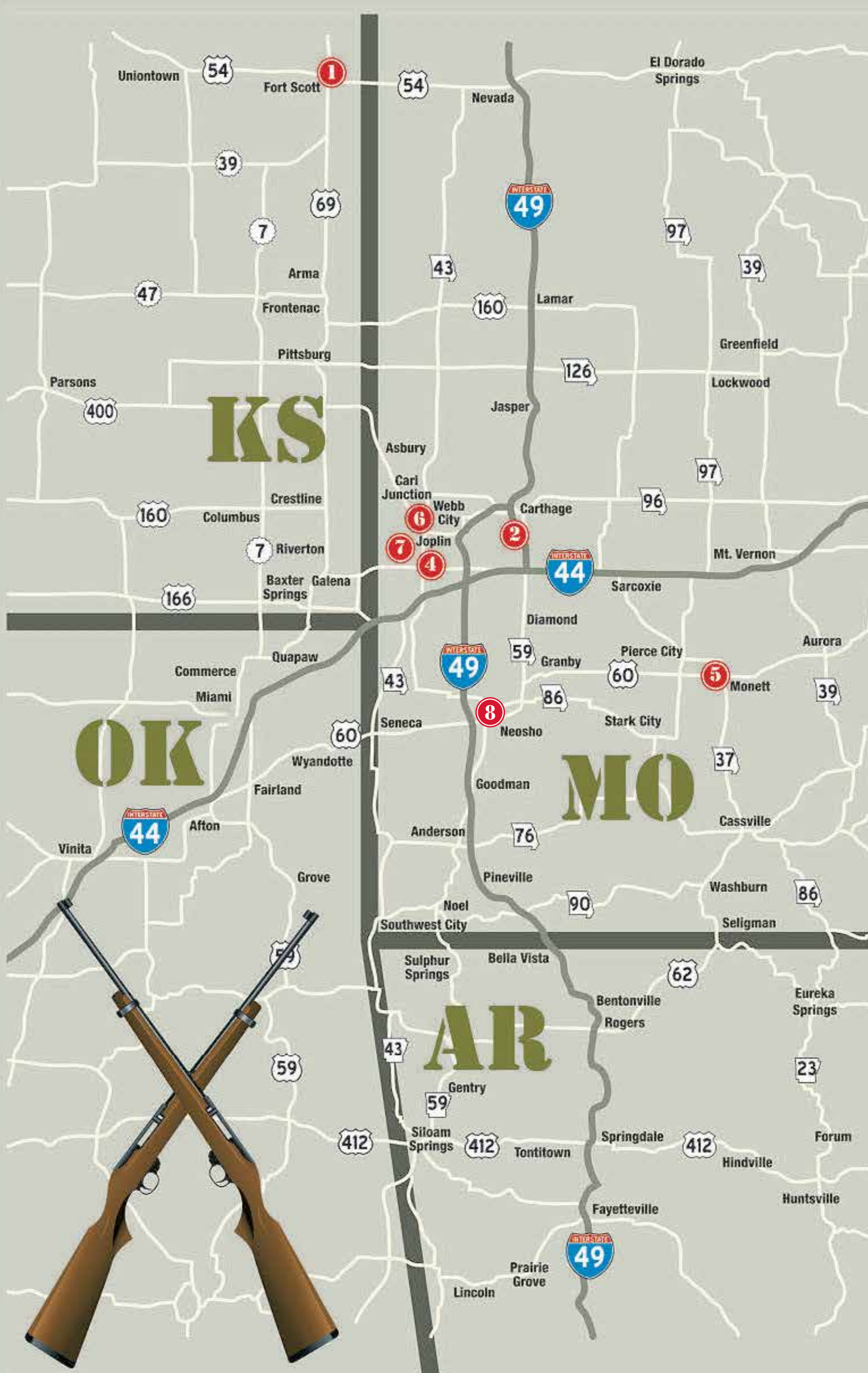
For fast and friendly service, call us to remove those unsightly stumps. Licensed and Insured. Free Estimates. 417-793-6401 Like us on facebook.

**PLACE YOUR AD TODAY!**

SPACE IS LIMITED AND GOING FAST! DON'T MISS OUT! Call Grace: 417-624-4100



# GUNS, AMMO, KNIVES & MORE



**1** **FORT SCOTT**  
GUN & PAWN  
www.fortscottga.com 1402 E. West Street  
www.facebook.com/fortscottga 620-223-0883  
"We ain't pretty... but we're CHEAP!"

**2** **LIBERTY TREE**  
Mon-Sat 10am-6pm  
530 W. Fir Rd  
Carthage, MO 64836  
417-358-5700  
LTGUNSHOP.COM  
GUNS-AMMO-SUPPLIES-CONCEALED CARRY TRAINING

**4** 824 MAIN ST. UNIT 102  
JOPLIN, MO 64801  
**RAYZOR'S EDGE**  
TACTICAL  
OPEN: MON-SAT 10:00-6:00  
417.206.1911  
FACEBOOK.COM/RAYZORSEGETACTICAL

**5** **GUNS & AMMO**  
BUY • SELL • TRADE  
**QUICK DRAW GUN**  
601 South Kyler, Monett MO • 417-354-8633

**6** **Imaginer's GUN ROOM**  
Gunstore & Art Museum  
Vintage - Pro Target - Historical  
Hunting - Protection - Blades  
& Accessories  
1410 S. Main St.  
Joplin MO 417-825-4010

**7** **STEVE'S TRADING POST**  
"JOPLIN, MISSOURI"  
4324 South Main  
417-782-9600

**8** **MAD MAN MOTOR**  
GUN & PAWN  
"..the right of the people  
to keep and bear arms  
shall not be infringed."  
401 WEST COLER  
NEOSHO, MO 64850 417.355.2514

**YOUR AD COULD BE HERE!**  
**CALL 417-624-4100**

# GUNS, AMMO, KNIVES & MORE

**MISCELLANEOUS**

**PURSUANT TO MO House Bill 204, A-1 Storage at 1215 West 14th, Webb City, MO on September 24 at 10am and North Rangeline Storage at 1810 North Rangeline, Joplin, MO on September 24 at 11am, will sell units to satisfy landlord's liens. Items sold to highest CASH BIDDER. Seller reserves right not to accept bid and/ or withdraw property from sale.**

**A-1 EASY STORAGE, 1215 W. 14th St., Webb City, MO. 10am: Amy Ralston 113C; Brandy Reynolds 149D; Monte Wilson 168D; Michael Dodson 170D; John Kubik 183D; Ethan Presley 241F; Curtis Green 261F.**

**NORTH RANGELINE STORAGE, 1810 N. Rangeline, Joplin, MO. 11am: Makia Elliott C4; Kari Wisdom H28; Jeremiah Block F39; Tyrone Brinkerhoff B19; Steve Newberry F14; I Shapers F10; Sara Seigrist G64; Martin Ruiz F15.**

**ROLL-OFF CONTAINERS FOR REMODELING, ROOFING, CLEAN UP.** Pittsburg, Joplin and surrounding areas. **Freddy Van's, Inc. 620-231-1127.**

**WANTED: 30+ acres to lease/purchase within 20 miles of Carthage/Joplin with farm house. 417-388-8506.**

**MISCELLANEOUS**

**SELLING WHOLESALE** corn all summer long and buying firewood. 417-312-7808 or 479-721-4119.

CALL ABOUT our classified ad specials. 417-624-4100.

**BUSINESS OPPORTUNITIES**



**BEAUTY SHOP** in Joplin, ready for you to open. Perfect location at 1806 Main. Has (4) stations easily expanded to (6). Make an appointment to be impressed with this salon and hear about allowances. Randy Stanley. 417-396-3616.

**BUSINESS FOR SALE** Septic tank cleaning and sewer/drain service. Northeastern Oklahoma. 58 years in business. For more information call after 6pm 918-456-2256.

**OTR & DRIVER OPPORTUNITIES**

**DRIVING JOB AVAILABLE.** We are a small family owned company, based out of Purdy MO, hauling grain and commodities throughout the 4 state area, MO, OK, AR and KS. We travel within a 300 mile radius. Drivers are home every weekend, leaving out Monday morning, returning Friday evening. We also have a few other dedicated freight lanes moving throughout the Midwest. We have later model trucks and trailers that are well maintained. Pay is based off of percentage, safety bonus at the end of year, paid vacation and paid holidays as well. Please call 417-442-3741.

**OTR & DRIVER OPPORTUNITIES**

**NEEDED OTR** Driver to haul livestock. 417-434-4822.

**NEED TO SELL YOUR HOUSE OR PROPERTY?** Get the best coverage around. Call the Big Nickel and our helpful representatives will assist you in creating your ad. You can even pay over the phone. **Call 417-624-4100.**

**NEED SOMETHING?** Let us help you. You can advertise that you are looking for a special item. **Call 417-624-4100 for more information.**

**ADVERTISE YOUR Flea Market or Antique Store** in the Antique & Flea Market Directory. Call Billie for more information and special pricing. **417-624-4100.**

**UNDER \$100 OR FREE**

(6) **GOLDEN Retriever** mixed puppies, (3) females, (3) males, some black, some blonde. 417-466-8234, 417-366-1325.

**USED UNWANTED bikes**, will pick up for free. 417-483-7478.

**WWW.BIGNICKEL.COM**

**MUSIC**

**SELLING 45 rpm record** collection, from late 40's thru late 80's, and other items. Call 479-936-4552. No money, don't call!

Have items to sell? Have too much stuff? Let us help you get the most for it! **Call 417-624-4100.**

**CONSTRUCTION & HOME IMPROVEMENT**

**NEWMAN'S Land Improvements, Inc.** Dozer, Backhoe, Dump Truck. Commerical, residential, and farm. Now serving the Grand Lake, NE OK area. Rick 417-388-5246 417-472-6895.

**SOUTHWEST CONTRACTORS** YOUR LOCAL metal roofing contractor. Various colors available. Free estimates. General construction. 417-434-3266.

**WWW.BIGNICKEL.COM**

**MANUFACTURED HOUSING**

**Clayton homes Joplin** **Joplin Super Center**

"Largest Selection of Energy Smart Homes in the 4-State Area!"

**Energy Smart Homes Will Save You \$\$\$**

**BEST HOMES • BEST PRICES**

**Customer Experience is our #1 Goal**

**Buy from the Proven Best!**

5609 East 7th St. • Joplin, MO  
**417-553-9780**  
[www.ClaytonHomesJoplin.com](http://www.ClaytonHomesJoplin.com)

**2 BED/2 Bath, 14x70, mobile home.** Located in Joplin on extra large city lot. Comes w/kitchen appliances, carport, 2 storage buildings, gazebo, storm shelter, fenced in back yard, newer metal roof. \$65,900. Shown by appt. only. No renting or owner financing. 417-451-2609.

**4 BEDROOM, Clayton 28x72, 4 bedroom/2 baths.** Home comes with new kitchen appliances and a new AC. Financing options available for most all credit scores. #42. 417-451-2609.

**AVAILABLE SOON: 3 bed/2 bath home** available soon. Will include new carpet, paint, kitchen appliances and AC. Home is getting a new metal roof. Home has 2x6 walls, tape & texture, porcelain sinks, thermal pane windows. Great home! Call for details. #14 417-451-2609.

**2017 FLEETWOOD, 3 bed/2 bath, gas stove, electric furnace.** New carpet, thermal pane windows, nice kitchen island. First 50 miles of delivery included in price. Get this home before its gone. #48 [www.hwy59discounthomes.com](http://www.hwy59discounthomes.com). 417-451-2609.

**FINANCING AVAILABLE:** 28x56, 3 bed/2 baths, fireplace, new kitchen appliances, AC and carpet. First 50 miles of delivery included in price. Call for details. #34. 417-451-2609.

**WE NEED MOBILE HOMES! PAYING CASH TODAY! ALL YEARS, ALL SIZES.** CALL 417-455-0200.

**WWW.BIGNICKEL.COM**

**PETS**

**AKC GERMAN Shepherd** pups, (2) males, (2) females, shots, 10 weeks, full registration \$750, limited registration \$500. 479-313-3202.

**BEAGLE PUPPIES, (4) tri-colored, (3) lemon, registered, \$400 each.** 417-435-5096.

**WWW.BIGNICKEL.COM**

**REGISTERED Pomeranian** puppies, \$1000 each, (2) females left. Visit Christine's Pomeranians on facebook. 479-220-1223.

**BEAGLE PUPPIES,** they will make good pets on excellent hunting dogs, 8 weeks old, \$250. Call or text 417-291-3704.

**BLUE HEELER** puppies, females, 8 weeks old October 4th. 620-724-0087.

**ENGLISH CREAM** Golden Retriever male puppy; red Labradoodle female puppy; Goldendoodle puppies; Cockapoo puppies. Current on all shots and worming. 417-884-5206.

**FOR SALE: AKC Registered German Shepherd** puppies, up to date shots and wormers, \$1400 each. 417-843-6297.

**FRENCH BULLDOG** male puppies, AKC registered, blue in lines, \$2000 each. 913-898-2752.

**GERMAN WIRE** haired puppies, purebred, UTD shots; Purebred Beagle puppies, check for pricing. 620-496-4645 call or text.

**REGISTERED FEIST** puppies, males, 8 weeks old, shots, wormed, sired out of World Champion O'Dell's Cool Whip. Parents are good squirrel dogs, \$300. 479-325-0231.

**BEAGLELIER, MALE and females; Toy Aussies male and females; Anatolian Shepherds, males and females and male Labradoodle, all vaccinations and wormed for age.** 417-880-0227. Call for pics.

**LABRADOODLE PUPPIES F1** - Born 7/6. M & F Parents Registered -Standard Poodle and Labrador Retriever. Call/text 417-818-7266.



**REGISTERED ENGLISH** Setters, 9 weeks old, hunting parents, (3) males, (4) females. 417-876-1717.

**ROTTWEILER PUPPIES,** APRI registered! Champion pedigree, excellent dogs, \$400. 620-778-8685.

**TOY AUSTRALIAN** puppies, reds and merles, 8 weeks old Sept. 30th, registers ASDR. 620-724-0087

**WELSH CORGI** puppies - 8 weeks on Sept 2. Shots & deworming current. Not kennel raised. Very personable and friendly. 417-884-2785, leave message if no answer.

**YELLOW, BLACK** mouthed Cur pups, 10 weeks, and treeing Cur pups, 14 weeks old. All shots, weaned. Miami. 918-540-4929.

**REAL ESTATE**

**HOMES FOR SALE**

**2 BEDROOM, 1 bath** Frame house w/central H&A in Joplin; AS IS. \$2,900 down, \$588 per month. Owner Finance. 800-720-8503.

**3 BEDROOM, 1 1/2 bath,** completely remodeled frame house w/central H&A plus storage building in Joplin. \$4900 down, \$878 per month. Owner Finance. 800-720-8503.

CALL ABOUT our classified ad specials. 417-624-4100.

PLEASE PLACE your classified ads on The Big NICKEL website. Our web address is [www.bignickel.com](http://www.bignickel.com)

**Town & Country**

Real Estate & Auction Service  
1700 W. Austin, Nevada • **417-667-2966**  
See more listings at [www.tncnevada.com](http://www.tncnevada.com)

- **360 acres** pasture and hunting ground Vernon County ..... **UNDER CONTRACT**
- **500 acres** pasture and hunting property needs fence ..... **UNDER CONTRACT**
- **38 acres** all timber hunting property surrounded by crop fields ..... **\$100,000**
- **3 bed, 1 1/2 bath, outbuildings, on 30 acres** just South of Nevada, MO ..... **UNDER CONTRACT** ..... **\$325,000**
- **4 BD, 3 BTH Home** just outside Nevada city limits ..... **\$340,000**
- **3 bed, 2 bath Home** on 60 acres west of Rich Hill MO ..... **UNDER CONTRACT** ..... **\$450,000**
- **108 acres, 101 Tillable, East of Nevada, MO** ..... **UNDER CONTRACT** ..... **\$460,000**
- **Turn Key Turkey Operation, 3 turkey barns** on 52 Acres, Southwest City MO area ..... **UNDER CONTRACT** ..... **\$675,000**
- **760 acres** pasture, fenced and cross fenced, Vernon County ..... **SOLD** ..... **\$2,500 per acre**
- **3 bed, 2 bath home** on 5 acres just outside city limits of Nevada, fenced, horse barn, ..... **UNDER CONTRACT** ..... **\$250,000**

**INVENTORY IS LOW, WE NEED LISTINGS!**



**DOUG WORTMAN** 417-448-9540 Owner Broker/ Auctioneer  
**JAY WORTMAN** 417-365-4721 Agent  
**TROY SCOTTEN** 417-448-7163 Agent  
**TAYLOR SCOTTEN** 417-684-1224 Agent  
**COLE ABLE** 417-684-0881 Auctioneer

**HELP WANTED**

**NEW & HIGHER PAY PROGRAMS**

**VAN CARRIER** looking for Class A CDL drivers

- Min. Age 21 • 1 Year Experience
- Growing - New Trucks being Delivered • Home Weekly

**CALL 417-354-8421**

**CEI CERTIFIED EXPRESS, INC.**

**DIESEL & TRAILER TECHNICIAN CAREERS**

- Brand New Shop with an Expanding Fleet
- Competitive Wages and Benefits
- Day Shifts Available

Apply on Indeed or call 417-451-6162, ext. 12 **CERTIFIED EXPRESS, INC.**

**LOCAL & OTR Drivers** Days & Nights Available OTR Routes too! CDL-Class A, 2 years experience. **CERTIFIED EXPRESS, INC.** 866-451-6162, ext. 3

**POULTRY FARM** near Diamond, MO. picking eggs, 4 days a week, 6-7 hours a day. Minimum wage. Must be reliable. Call 417-499-1163.

**POWDER COATER/ WELDER** needed, must be willing to do other positions, (welding, powder coating, sandblasting, installation). Job located in Neosho. 417-592-0251.

**OTR & DRIVER OPPORTUNITIES**

**HANDY MAN** needed to do small repairs and yard work in Joplin. 417-952-3194.

**HAVING A garage sale or rummage sale?** Call us for special pricing. 417-624-4100.

**CEI CERTIFIED EXPRESS, INC. NEOSHO, MO**

**NOW HIRING SAFE, PROFESSIONAL DRIVERS**

11817 Kentucky Rd., Neosho, MO  
**866-451-6162 EXT. 18**  
**CEI-HWLL.COM**

**HOMES FOR SALE**

3 BEDROOM, 2 bath, Frame 2-Story house with new metal roof, storage building, 2 laundry rooms, central H&A and new electrical throughout. "AS IS". \$3900 down, \$755 per month. Owner Finance. 800-720-8503.

JOPLIN- 3 bedroom, 1 bath remodeled frame house, 1-1/2 story with central heat and air, 2 car detached garage, plus chain link fence, \$3900 down, \$711 per month. Owner finance 800-720-8503.

JOPLIN: 3 bedroom, 1 bath, completely remodeled frame house with central H&A and 1 car detached garage. \$4900 down, \$746 per month. Owner Finance. 800-720-8503.

LAMAR 2 bedroom, 1 bath home + central heat and air, 1 car detached garage, \$3900 down, \$579 per month. Owner Finance 800-720-8503.

NEED SOME land in a great location? 2.5 acres + trees; no septic or water. Near Stalene Road, Joplin. \$1900 down, \$193 per month; Owner Finance. 800-720-8503.

NEOSHO: ONE acre with 3 bedroom, 2 bath frame house; "AS IS". \$3900 Down, \$667 per month. Owner Finance. 800-720-8503.

ONE ACRE + 3 bedroom, 2 bath frame house with central heat and air, 1 car attached garage and 2 car carport in Joplin, "AS IS" \$3900 down, \$755 per month. Owner Finance 800-720-8503.

STARK CITY, (4+) acres, plus 3 bedroom, 2 bath double wide 28'x56' with central heat and air, well and septic. \$7900 down, \$1422 per month. Owner finance. 800-720-8503.

**HOMES FOR RENT**

NICE 3 bedroom with central heat/air, new carpets, carport. Arcadia, KS. 620-232-4718 or 620-638-4703.

STORAGE UNITS, TWO SIZES OPEN, RV/BOAT PARKING ALSO AVAILABLE, IN NEOSHO, MO. (NEAR LOVE'S TRUCK STOP.) FOR PRICES AND SIZES, VISIT [86ministorage.com](http://86ministorage.com) or call 417-621-1601.

**COMMERCIAL PROPERTY**

ZONED C-1. 1/4 city block. 2600' home. Prime location, near Casey's. Aurora. \$341,000. 417-678-5700.

**LOTS/LAND**

RESIDENTIAL LOT, all utilities, close to river, \$7500 or best offer. 639 E. 6th St., Baxter Springs, KS. 620-284-1181.

**FARM/ACREAGE**

[WWW.BIGNICKEL.COM](http://WWW.BIGNICKEL.COM)

**FARM/ACREAGE**

(6-1/2) acres, plus milk barn with metal roof. 20'x40', Pineville. \$4900 down, \$834/ month. Owner finance. 800-720-8503.

WANTED: 30+ acres to lease/purchase within 20 miles of Carthage/Joplin with farm house. 417-388-8506.

**BIG NICKEL ADS SELL!** Call for more information and specials. 417-624-4100

**VEHICLES FOR SALE**

WANTED: MOTOR for 2004 SSR Chevrolet, aluminum block. Also need portable gasoline air compressor. 620-249-6999.

Advertise your specialty in the Big Nickel Service Directory. Runs every week! Call Grace for special pricing and more information. 417-624-4100.

**VEHICLES FOR SALE**

[WWW.BIGNICKEL.COM](http://WWW.BIGNICKEL.COM)

**PASSENGER VEHICLES**

**GREAT DEAL**

TOYOTA, 2011, Camry, 170,000 miles, clean, asking \$4000. 417-793-1053.

**PASSENGER VEHICLES**

PLEASE PLACE your classified ads on The Big NICKEL website. Our web address is [www.bignickel.com](http://www.bignickel.com)

[WWW.BIGNICKEL.COM](http://WWW.BIGNICKEL.COM)

**PICKUPS**

(2) NICE Ram 1500 trucks. 620-232-4718.

**4X4S**

**MUST SEE!**

JEEP, 2006, Commander, 4 door, 4WD Limited, trail rated, all options, roof, brush guard, Hemi engine, running boards, power seats, air, new tires. Must See! \$7700 or best offer. 918-964-0866.

**CLASSIC & COLLECTOR VEHICLES**

1966 BELVEDERE II, cold air, 64,000 miles, all original, \$22,500. Fredonia, KS. 970-714-4395.

Advertise your Flea Market or Antique Store in the Antique & Flea Market Directory. Call Billie for more information and special pricing. 417-624-4100.

**HEAVY TRUCKS & EQUIPMENT**

**EQUIPMENT UNLIMITED, INC.**  
TRUCKS & SALES  
WE BUY AND SELL:  
Dozers; backhoes; skidsteers; dump trucks; bucket trucks; semis; trailers of all sizes; forklifts; various quick attachments.  
Call Robert 918-801-3269.

**Increase Your Chances For Sales!**  
Classified ads from the Big Nickel are put on our website to reach a larger audience.

**MOTORCYCLES & ATV'S**

**NIGHTWIND CYCLES**  
1004 Walnut, Lamar, MO.  
Reasonable rates.  
Motorcycle inspection station.  
**SALE ON T-SHIRTS!**  
Now have full line of biker apparel and gear!  
Also Billiard supplies!  
Year round gift certificates.  
Now accepting credit cards.  
Call for appointment  
417-682-3733.

Visit Our Web Site @ [www.bignickel.com](http://www.bignickel.com) to place your classified ad. See it in print & ONLINE

**RECREATIONAL VEHICLES**

**GRAND COUNTRY**  
Lakeside RV Park. Daily, weekly, monthly, annual. Adult park. On Grand Lake. Space available. 918-314-9508.

Visit Our Web Site @ [www.bignickel.com](http://www.bignickel.com) to place your classified ad. See it in print & on-line.

**AUTO PARTS & SERVICES**

**2013 Hyundai Santa Fe**



7 passenger loaded **\$13,900**

**08 Dodge 1500**



Crew cab V6 engine **\$9,995**

**2012 Ford F-150**



Ext cab 4x4 **\$12,900**

**2008 Hummer**



Luxury Edition loaded **\$15,900**

**2012 Buick Enclave**



**\$10,900**

**2013 Dodge 1500**



cab low miles, SUPER CLEAN! **\$19,500**



4801 Hwy. 59 N. Grove St.  
**(918) 786-9310**  
[www.herrelsoncarco.com](http://www.herrelsoncarco.com)

**Increase Your Chances For Sales!**  
Classified ads from the Big Nickel are put on our website to reach a larger audience.

**DO YOU LIKE YOUR PICKUP, SUV, OR CAR?**

Summer is here! Let **DYNATECH** get your vehicle ready for those fun trips!

**Let's Get Er Done!**

**DON'T TRADE IT IN ON A USED CAR YOU KNOW NOTHING ABOUT, Give Your vehicle new life with a DYNATECH Remanufactured Engine!**

COMPLETE MACHINE SHOP SERVICES

**WE ARE YOUR PICKUP & SUV HEADQUARTERS!**

1 YR. UNLIMITED MILES PARTS & LABOR WARRANTY **WE DO BETTER THAN OUR COMPETITORS FOR LESS \$\$\$**

**DYNATECH ENGINE REBUILDERS** IN THE SAME LOCATION FOR 30 YEARS  
**620-783-5041** (6 Miles West of Joplin on 7th St.)  
724 W. 7th • Galena, KS

**VEHICLES FOR SALE**

**2012 KIA SOUL**

1.6L L4, FWD, Auto, Only 120,000 Miles, 35 Mpg Hwy, Lots of EXTRAS!



Only **\$6,995**

**Burr Motor Co.**  
639 W. Coler, Neosho, MO  
**417-451-1029**  
[www.burrmotorcompany.com](http://www.burrmotorcompany.com)



# Branson TRACTORS

**Heaviest Tractors in their Class,  
with the Most Loader Lift Capacity!  
All Branson Tractors include  
FREE LOADER!**

**6 Year Limited  
Warranty**

**Financing  
Available**



## BRANSON 2505H

25HP, 4WD, W/LOADER,Hydrostat  
Trans,850 lbs loader lift  
capacity, 1500 lbs tractor weight only.

**\$196<sup>86</sup>/MO.**

0 DOWN, 84 MO FINANCING WAC



## BRANSON 3015R

30HP, 4WD, W/LOADER, 12X12 Shuttle  
Shift Trans, 2200 lbs loader lift capacity,  
3022 lbs tractor weight only.

**\$279<sup>96</sup>/MO.**

0 DOWN, 84 MO FINANCING WAC



## BRANSON 2515R

25HP, 4WD, W/LOADER,12X12  
Shuttle Shift Trans, 2200 lbs loader lift  
capacity, 3022 lbs tractor weight only.

**\$252<sup>26</sup>/MO.**

0 DOWN, 84 MO FINANCING WAC

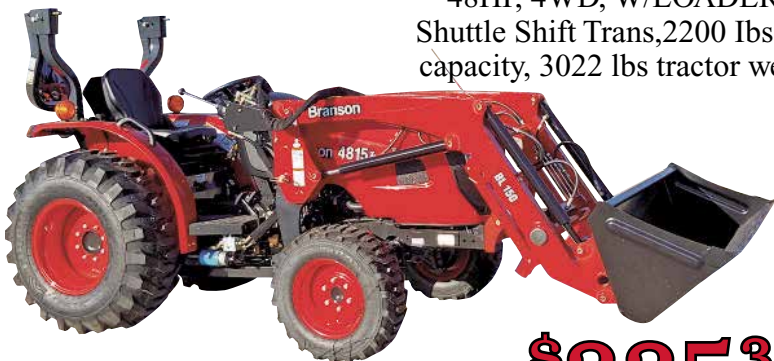


## BRANSON 3515H

35HP, 4WD, W/LOADER, HST trans,  
2200 lbs loader lift capacity,  
3022 lbs tractor weight only.

**\$321<sup>51</sup>/MO.**

0 DOWN, 84 MO FINANCING WAC



## BRANSON 4815R

48HP, 4WD, W/LOADER,12X12  
Shuttle Shift Trans,2200 lbs loader lift  
capacity, 3022 lbs tractor weight only.

**\$335<sup>35</sup>/MO.**

0 DOWN, 84 MO FINANCING WAC



## BRANSON 2515R

25HP, 4WD, W/LOADER,& Backhoe,  
12X12 Shuttle Trans,2200 lb loader lift  
capacity, 3022 lbs tractor weight only.

**\$349<sup>20</sup>/MO.**

0 DOWN, 84 MO FINANCING WAC



## BRANSON 2515H

25HP, 4WD, W/LOADER,HST Trans,  
2200 lbs loader lift capacity,  
3022 lbs tractor weight only.

**\$266<sup>11</sup>/MO.**

0 DOWN, 84 MO FINANCING WAC



## BRANSON 3515CH

35HP, 4WD, W/LOADER,CAB w/H&A,  
Hydrostat Trans, 2 sets Remotes, 2200 lb  
loader lift capacity, 3500 lbs tractor  
weight only.

**\$376<sup>90</sup>/MO.**

0 DOWN, 84 MO FINANCING WAC

**MIDWEST LARGEST BRANSON DEALER & TOP "10" NATIONWIDE!**

**Tatum Motor**  
FARM TOOLS SINCE 1889

931 N. BUS. HWY. 71  
ANDERSON, MO  
417-845-3563  
HOURS M-F 8-5 • SAT 8-NOON

1033 W. HENRI DE TONTI BLVD  
(412 WEST), TONTITOWN, ARK  
479-361-9488  
HOURS M-F 8-5 • SAT 8-NOON

S A L E S • S E R V I C E • P A R T S

# CAS STEEL

## METAL BUILDING SUPPLIES



### METAL CULVERTS

- 23 STEEL ROOFING COLORS **LIFETIME WARRANTY** plus 18 Textured Colors
- VINYL SIDING
- GARAGE DOORS
- TRIM
- BUILDING KITS Steel Or Wood

**FOR SALE:**

(1) 12x15 insulated Commercial Ribbed Door **\$1,331**

(2) 8x8 u **SOLD** Commercial Ribbed Door **each**

[www.cassteelneosho.com](http://www.cassteelneosho.com)  
**18027 E. Hwy. 86 - Neosho, MO**  
 (5 Miles East of Walmart on 59 Hwy. - Old 60 & 71 Alt.)  
**Toll Free 855-455-2526 or 417-455-2525**  
 Mon-Fri • 7:30-5:00



## American Made Metal Roofing

40 Year Warranty Metal... \$3.19 (\$100 per Sq)

<b>Building In A Box</b> Stud Wall & Pole Barn Kits 40 Year Warranty	29 Gauge 10 Year .....\$2.99 (\$93 Per Sq)
24x30x8.....\$6,085	29 Gauge #1 Galvalume .....\$2.69 (\$84 Per Sq)
30x40x10.....\$8,850	26 Gauge #1 Galvalume .....\$3.55 (\$111 Per Sq)
40x60x12.....\$17,830	26 Gauge 40 year .....\$3.95 (\$124 Per Sq)

We Manufacture Our Own Metal and Trusses  
\*\*Precut Packages Available\*\*

- ★ 21 Years In Business
- ★ 17 Color Options

**PORTABLE BUILDINGS**

**REDUCED METAL PRICING**




202 S. Prigmor Joplin, MO. 417-553-8697 ★ \*29 Gauge 10 Yr. possibly not American made

## BRB BUILT RITE BUILDINGS

1110 W. Harmony Neosho, MO  
**417-632-4675**  
[www.builtritebuilding.com](http://www.builtritebuilding.com)

- 2x6 Nailers
- Trusses 4' On Center
- Patented Concrete Pier Options Available
- Free Estimates
- McElroy Metal (40 Year Warranty)

### BUILT-RITE POST FRAME BUILDINGS

- Shops • Garages • Machine Sheds
- Cattle Facilities • Homes
- Horse Barns • Riding Arenas






Serving The Area For Over 35 Years. Locally Owned & Operated.

## MIDWEST METAL

### METAL MANUFACTURING & SUPPLIES

# Roll Formed Metal & Trims

## R-FORMED 26 GAUGE METAL AG PANEL

- Steel Custom Cut to 1/4"
- Long & Custom Trims Available
- Heavy .0153" 29 gauge Thickness.

Feel the Difference

- Valspar, 21 Colors, In-stock (40 year paint warranty)
- Very Fast Turn Around Time
- Full Line of Building Accessories
- Ask About our Pole Barn Packages

**Competitive Pricing.**



**Quality Service.**



**Try a Textured Metal Residential Roof for Less Glare!**

**5091 Udall Road, Chetopa, KS**  
**620-226-3660**

## VANOVER METAL BUILDING SALES, INC.

LOCATED 11 MILES WEST OF JAY, OK. ON HWY. 20  
**(918) 253-6030 (800) 511-0634**  
 MON-Fri 8:00 - 4:30

### Carports and Garageports

Why wait several months to get a carport from someone else... At Vanover Metal, We build ours in house, ready in 2 - 3 weeks. Delivery available.

Built from 12' to 24' wide and 10' to 40' long

Stop by to discuss one today!




## METAL PRICES STILL ON THE RISE!!!!!!

Due to national demand, metal prices are still rising. Act now to get the best prices before next spring. Metal roofing starts at \$1.12/ sq foot. Act now before the next price increase at the end of each month.

### METAL BUILDINGS



**Increase Your Chances For Sales!**

Classified ads from the Big Nickel are put on our website to reach a larger audience.

## GRABER METAL SALES

"Serving the Metal Building Industry"



Roofing • Siding • Trim • Insulation  
 Overhead Doors • Windows, Etc.

Call 417-246-5335  
 Fax 417-246-5835  
 8327 Lawrence Co. Ave.  
 LaRussell, Mo

METAL BUILDINGS

METAL BUILDINGS

**Best Buy Builders & More**  
**417-508-9351**  
**417-592-0642**



27'x30' w/concrete & erected  
**ONLY \$15,272**

21'x21' erected  
 (1)- 9x7 OH door  
 (1)- walk-in door  
**ONLY \$7,890**

**QUALITY POST FRAME CONSTRUCTION LLC**



POLE BUILDINGS • GARAGES • GENERAL CONSTRUCTION  
 QUALITY WORKMANSHIP • METAL ROOFING  
 FREE ESTIMATES!  
**WILLARD KNEPP 918-533-2637**  
 FAIRLAND, OK • NO SUNDAY CALLS, PLEASE

**BIG SPRINGS SHED MOVERS LLC**



"We'll move YOUR shed or barn ANYWHERE!"  
**Derrick Yoder 417.389.6333**  
 Call or Text for more details  
 derrickyoder@icloud.com

**SUPERIOR METAL SALES INC.COM**

**Metal Building Supplies & Components**

Commercial • Agriculture • Shop Buildings  
 Custom I-Beam Buildings w/26 ga.  
**40 Year Warranty on all Prime Steel Panels**

**HAY BARN 40x75x16**  
 Roof Only • Materials  
**CALL FOR PRICING DUE TO RISING COST OF STEEL**  
 All American Steel. Install Available.



- 29 Gauge 40 Year, Painted, Warranty.
- 19 Colors Available.

Steel Pricing Fluctuation. Please Call for Quotes

**Call For Mini-Storage Quotes**

Toll Free 1-888-364-9527

Office 1-417-671-8015

Fax 417-671-8018

Hours: Mon-Fri 8am-5pm

**12760 St. Hwy. 76 • Cassville, MO 65625**

sales@superiormetalsalesinc.com

**Free Estimates**



**IDEAL STRUCTURES LLP**

Specializing in Pole Buildings, Garages, Shops, and General Construction

Marion Sommers PHONE: (479) 335-6230

EMAIL: MarionSommers69@gmail.com

Hindsville, AR 72738



**NOBODY BEATS OUR PRICES**

Sale Ends September 30, 2021

Seymour, Missouri 417-935-4201



**Pole Barns & Post Framed Buildings!**

23'x32'x10' <b>\$7,279</b> Material Only <b>\$8,825</b> Labor Included	23'x40'x10' <b>\$8,215</b> Material Only <b>\$10,149</b> Labor Included	30'x40'x10' <b>\$10,100</b> Material Only <b>\$12,620</b> Labor Included	40'x60'x12' <b>\$17,860</b> Material Only <b>\$23,260</b> Labor Included
--	---	--	--

**NOBODY, BUT NOBODY BEATS OUR PRICES!!!**

10 ft. Slider • Engineered Trusses 8' O.C. • 2x6 Treated Bottom Wrap • Screws • 2x10 Top Wrap • 2x4 Purlins • Full 29 Gauge Steel • Plus 3 ft. Entry Door with Lock  
 OPTIONS: Sidewall Heights on all Buildings 10', 12', 14' & 16'; Overhead Garage Door, Skylights, Insulation, Wainscoting, Insulated Vinyl Windows, Cupolas. Labor Rates Slightly Higher over 50 Miles from Seymour. Call for YOUR FREE QUOTE TODAY!!!!

PAINTED WHITE, GREEN OR TAN METAL .....\$98.99		
10' - \$31.40	12' - \$37.66	16' - \$50.21
MIX & MATCH METAL .....\$59.99		
8' - \$15.20	10' - \$19.00	12' - \$22.80
GALVALUME METAL .....\$79.99		
10' - \$25.40	12' - \$30.43	16' - \$40.57
GALVANIZED CORRUGATED METAL <b>SOLD OUT!</b>		
8' - \$9.84	10' - \$12.30	12' - \$14.75
		16' - \$19.67

**IN STOCK**

Call for free quote, brochure & color chart. Other sizes also available.



Licensed 25 Years Exp. Insured  
**HONESTY WARRANTY**  
**JONES BUILDING SYSTEMS**  
 www.jonesbuildingsystems.com  
 Office 479-644-6336 • Fax 479-657-6701

Metal Buildings  
 Mini Storage  
 Metal Roofing  
 Site Work and Concrete

★ No Dirt, Tax or Delivery Included Yet ★

**RED IRON**  
 Installed Includes Slab  
 100x125x16  
 Insulated  
 Incl. 4 O/H &  
 4 W/I Doors  
**\$234,500**

Call about  
**Mini Storage Buildings**

**RED IRON HAY BARN**  
 40x75x16 Installed  
 Roof only w/piers  
**\$26,480**

**RED IRON HAY BARN**  
 Installed  
 64x75, Roof only w/piers  
**\$36,800**

★ Commercial & Residential ★ Heavy Built All American Steel ★

**YES!** YOUR BIG NICKEL AD IS ALSO ON THE INTERNET. SEE **BIGNICKEL.COM**

**H&M CONSTRUCTION**  
 Cell: 417-262-2340 • Home: 417-682-4060  
**ALL TYPES RESIDENTIAL & COMMERCIAL BUILDINGS**  
 Pole Barns • Shop Buildings • Horse Barns  
 Cattle Facilities • Shouse Buildings • Garages  
 Also Available in Red Iron Structures  
**YOU DREAM IT, WE BUILD IT!**

**NEW PACKAGE HOMES**



2x6—16" on center-Exterior Stud Walls  
 Residential Roof Trusses-2' on center  
 4/12 pitch with 1' over hang  
 40 year Painted Metal roofing in 20 Different Colors  
 Profile Ridge Vent - Ventilated Ridge Cap  
 Vinyl Center Vent Soffit  
 Color Matched Metal Fascia & Gable Trim  
 2 - 3' 6 Panel Entry Doors  
 4 - 3'x4' Vinyl Insulated Windows

Your Choice of either:  
 Stock 3/8" T111 Siding w/1x4 Pine Window & Door Trim - or -  
 7/16" OSB & House Wrap ready for other finish options

**ALL FIGURED FOR SUITABLE CUSTOMER SUPPLIED SLAB OR SUB-FLOOR**

Price for Basic Materials Package (No Labor at this Time)

20x24(480 sq. ft.)	20x32(640 sq. ft.)	20x40(800 sq. ft.)	28x40(1120 sq. ft.)	28x48(1344 sq. ft.)
<b>\$10,514</b>	<b>\$12,079</b>	<b>\$13,600</b>	<b>\$16,759</b>	<b>\$18,629</b>

**40yr Painted Metal**  
**Call**

**KNOTTY PINE DOORS**  
 Starting at  
**\$129.99**

**LP SMARTSIDE T-5 LAP B GRADE \$43.59SQ**

**Car Siding!**  
 1x6 White Pine Siding **79¢** in ft  
 1x8 White Pine Siding **\$1.05** in ft  
 \* 4 Profiles to choose from!  
 Broken Bundles Add 10¢ Per Ft.

**4x8 Sheeting**  
 Less than full units Add \$1 per sheet  
 3/8" Beaded Paneling \$17.99  
 7/16" T111 Siding \$23.99  
 Paneling \$9.99  
 1/2" Plywood \$SOLD  
 3/4" Plywood \$SOLD  
 3/16 Pegboard \$12.99

**REAL WOOD SIDING**

**2x6 Log Siding - 1.59¢ In ft**  
**1x8 Beveled Cedar from- 79¢ In ft**  
**T1-11 Siding from Sold Out**

**DECK PACKAGES**

Materials Only  
 8x8.....\$395.95  
 10x10.....\$569.49  
 12x12.....\$799.99

Now Stocking Quaker Vinyl Windows

2030 \$ 135.99	3030 \$157.99
3040 \$173.99	3052 \$189.99
3040Twin \$379.99	3052Twin \$419.99

**LUCKY DISCOUNT LUMBER**  
**417-935-4201**  
**455 State Hwy C • Seymour MO 65746**  
 www.luckydiscountlumber.com

\*Some restrictions apply see store for details. Prices subject to change without notice.



### B Section Index

- Antiques/  
Flea Markets .....Page 14
- Antiques/Flea  
Market Directory...Page 15
- Auctions .....Page 09
- Farm Equipment .....Page 04
- Farm Miscellaneous...Page 06
- Guns &  
Sporting Goods .....Page 09
- Lawn & Garden .....Page 08
- Livestock.....Page 07
- Cattle.....Page 07
- Horses & Mules .....Page 08
- Misc. Livestock .....Page 07
- Pasture, Feed & SeedPage 07
- Trailers & Tack.....Page 07
- Metal Buildings .....Page 02
- Wood.....Page 09
- Yard/Garage Sales ...Page 08

### METAL BUILDINGS

## FARM EQUIPMENT

**MILLER**

**B** •Garages  
**U** •Pole Buildings  
**I** •Mini Storages  
**L**  
**T** •Post Frame Homes

**918-257-5361 • cell 918-260-3258**  
**T. Miller Construction**  
Ask for Tite - Afton, OK  
No Sunday Calls

Buy Quality & Get Experience

2013 WING Field maxi lift harrow, 12 ft, 3 point, in good condition, \$1900. 417-489-0872.

KISCO WATER reel irrigation, B160, 65 psi, \$2000. 417-489-0872.

PLEASE PLACE your classified ads on The Big NICKEL website. Our web address is [www.bignickel.com](http://www.bignickel.com)

Advertise your Flea Market or Antique Store in the Antique & Flea Market Directory. Call Billie for more information and special pricing. 417-624-4100.



**VMW**  
Vollenweider Metal Works

- Welding & Metal Fabrication
- Aluminum Welding
- Tube Bending
- Airgas Dealer
- Chisholm Trail Haybeds
- B&W Hitches
- Metal Sales

**VOLLENWEIDER METAL WORKS**  
**417-835-3835**

11367 State Hwy 76 Exeter, MO 65647 Find us on Facebook  
WALK-INS WELCOME

**JOPLIN TRUSS**  
ENGINEERED QUALITY CONSTRUCTION  
2 LOCATIONS TO SERVE YOU:

**Stark City, MO**  
417-472-6800

**Hwy. 96 - Avilla, MO**  
417-246-5215

## Solid Service Since 1967

Because you want to work your land not on your tractor.

Continuing more than 30 years of excellent value, performance, and exceptional customer satisfaction established by our founding company LG, we are so confident in the quality of our tractors, we back each one with our 6 year limited warranty



- 16x16 power shuttle
- Adjustable 3 point arms
- QT Loader & Bucket & More!

**LS Tractor**  
Excel In Your Field™

More Tractor, More Value,  
More Satisfaction

0% down ~ 84mo~  
Free Loader  
\*Subject to change\*

Since 1967

**Walt's Tractor LLC**  
**417.472.7200**

12 Miles East of Neosho on Hwy. 86

54 Years

**HYDRAULIC CYLINDER REPAIRS,  
HOSES & MUCH MORE AT WALT'S**



The Perfect mate for the LS Tractor

CUTTERS  
THAT WORK AS  
**HARD**  
AS YOU DO!



Come see cutters  
FOR SALE and IN STOCK

[www.waltstractorsales.com](http://www.waltstractorsales.com)  
Where Service Is Always In Season!



**John's Tractor Works & Equipment Inc.**  
Since 1985  
Your Agri. Diesel Service Specialist  
15 Years of Sales, Parts and Service  
Mon-Fri 9am-5pm Sat 9am-Noon  
3 Miles East of Vinita on Hwy. 60  
**(918) 256-5774**

**KIOTI**  
run ahead of the pack

**ZXC**  
ZXC/ZXC SE

0% UP TO **48** MONTHS OR **\$400** UP TO CASH BACK\*

**KIOTI**

**RX**  
55-73 HP

0% UP TO **72** MONTHS OR **\$6500** UP TO CASH BACK\* (T-L-B) ON SELECT MODELS

**6 YEAR** UNLIMITED HOUR POWERTRAIN WARRANTY

**KIOTI**

**CX**  
25 HP

0% UP TO **84** MONTHS OR **\$2400** UP TO CASH BACK\* (T-L-B) ON SELECT MODELS

**6 YEAR** UNLIMITED HOUR POWERTRAIN WARRANTY

**KIOTI**

**DK**  
45-55 HP

FREE LOADER OR 0% UP TO **72** MONTHS OR **\$5000** UP TO CASH BACK\* (T-L-B) ON SELECT MODELS

**6 YEAR** UNLIMITED HOUR POWERTRAIN WARRANTY

**John's Tractor Works & Equipment Inc.**  
Since 1985  
Your Agri. Diesel Service Specialist  
15 Years of Sales, Parts and Service  
Mon-Fri 9am-5pm Sat 9am-Noon  
3 Miles East of Vinita on Hwy. 60  
**(918) 256-5774**

**KIOTI**  
run ahead of the pack



The World's #1 Selling Farm Tractor!  
**LAMBERT**  
 Tractor & Machinery Sales, L.L.C.



**CALL FOR CASH PRICE!**

NO DPF FILTER TO SERVICE OR REPLACE SAVES YOU TIME AND MONEY NO DOWNTIME NEEDED FOR REGENERATION

**7 YEAR LIMITED POWERTRAIN WARRANTY**

The Largest Mahindra Dealer in Kansas!  
 8001 S.E. Hwy 66, Galena, KS  
 www.lamberttractor.com  
**620-783-1895**  
 We are Open. Curbside Service Available



\*2018 data including all Mahindra brand sales



**Mahindra EMax 20S HST, 20 HP, 4x4,**  
 Loader w/quick attach bucket..... **\$185/MO**  
 54" Belly Mower w/Hydr. Raise/Lower..... **Add. \$40/MO**  
*0% Down, 84 Month Financing Available W.A.C.*



**Mahindra 1640 Shuttle, 40hp, quick attach loader**  
 & quick attach bucket, 4x4..... **\$330/MO**  
*0% Down, 84 Month Financing Available W.A.C.*



**Mahindra 1626 HST, w/loader, 4x4, 26 HP**  
 ..... **\$273/MO**  
*0% Down, 84 Month Financing Available W.A.C.*



**Mahindra 6075 w/cab, heat & air, stereo, 75 HP, dual remotes,**  
 power shuttle trans, quick attach loader & bucket.... **\$639/MO**  
*0% Down, 84 Month Financing Available W.A.C.*



**Mahindra 4540, 2WD, Canopy, gear shift, quick**  
 attach loader & bucket..... **\$300/MO**  
*0% Down, 84 Month Financing Available W.A.C.*

**STIHL**

**BLOWERS**  
 STARTING AT  
**\$139<sup>99</sup>**

LAMBERT TRACTOR  
 620.783.1895

**STIHL**

**CHAIN SAWS**  
 STARTING AT  
**\$189<sup>99</sup>**

CHAIN SAW CHAIN SPECIALS!

LAMBERT TRACTOR 620.783.1895



**Bad Boy 2024H, 24hp, quick attach loader &**  
 quick attach bucket, 4x4..... **\$220.00**  
*\$0 Down, 0.99% for 84 Month Financing Available W.A.C.*



**Bad Boy 3026H, 26hp, Backhoe, quick attach**  
 loader & quick attach bucket, 4x4..... **\$300.00**  
*\$0 Down, 0.99% for 84 Month Financing Available W.A.C.*

## USED Equipment

- Mahindra 6' Cutter, shear pin, like new .....\$1,250.00**
- Hustler Zero-turn, Sport 48", Briggs & Stratton engine .....\$1,899.00**
- Bush Hog BH-17 Cutter, 7' .....\$2,500.00**
- Mahindra SD Cutter, 6' .....\$1,400.00**

See Full Line Of Used Equipment & Implements At

**lamberttractor.com**



**Financing Available W.A.C.**

- Bush Hog 6' BH216, 3point, F&RChains.....\$2,799**
- Bush Hog BH216 6', 3point, F&RChains.....\$2,799**
- Bush Hog BH217 7', 3point, F&RChains.....\$3,999**
- Bush Hog 1815, 15' Pull Type, F&RChains .... \$15,900**



**BAD BOY MOWERS**  
**LAMBERT TRACTOR**  
 620-783-1895  
 8001 S.E. HWY. 66,  
 GALENA, KS

2021 Residential to Commercial Models have Arrived

**HUSTLER TURF EQUIPMENT**

**MADE IN THE USA**

**RAPTOR SERIES**

Lambert Tractor  
 620-783-1895  
 8001 S.E. Hwy. 66, Galena, KS

AVAILABLE DECK SIZES: 42" & 54"    42" & 54"    42" - 60"    48" - 60"

**TYM**  
TRACTORS

## TYM T394

- 38HP YANMAR
- 4WD - HYDROSTAT TRANSMISSION
- W/LOADER

# \$21,950

72 MONTH WARRANTY

**GATEWAY FARM EQUIPMENT**  
9723 GATEWAY DRIVE • NEOSHO, MO  
**417-451-0821 • www.gfeneosho.com**

**15 WORDS \$11.75 - CALL  
THE BIG NICKEL TODAY AT  
417-624-4100!!**

**FARM EQUIPMENT**

**BE SMART WHEN INVESTING IN A HAY TRAILER**  
Do you bale 100 bales or 10,000?  
Do your bales weigh 500 lbs. or 2500 lbs.?  
Do you haul them 1 mile or 100 miles?  
From one to twenty-seven bales at once GoBob has the RIGHT self-unloading hay trailer for your operation.  
[BigGoBob.com](http://BigGoBob.com)  
855-880-7961

**FARM EQUIPMENT**

**Visit Our Web Site @  
www.bignickel.com  
to place your classified ad.  
See it in print & ONLINE**

The **BIG NICKEL** IS NOW A **PROUD MEMBER** OF THE **PHILLIPS MEDIA GROUP NEWSPAPER FAMILY**  
*Watch for exciting changes coming soon!*

**INTERSTATE POLE** NO SUNDAY CALLS, PLEASE



★ Commercial ★ Mini Storage ★ Garages ★  
★ Horse Barns ★ Shops ★ Agriculture ★  
**Darrell Knepp • Sarcoxie, MO**  
**417-437-1452 • interstate.buildings@privategarden.org**



**Increase Your Chances For Sales!**

Classified ads from the Big Nickel are put on our website to reach a larger audience.

**MISC. FARM EQUIPMENT**

**POULTRY HOUSE REMOVAL** We buy good quality chicken and turkey houses. Remove the houses and all deconstruction debris. Local professional crews. Serving since 1992.  
**Cedar Creek Contractors, LLC 785-217-3379.**

**Visit Our Web Site @  
www.bignickel.com  
to place your classified ad.  
See it in print & on-line.**

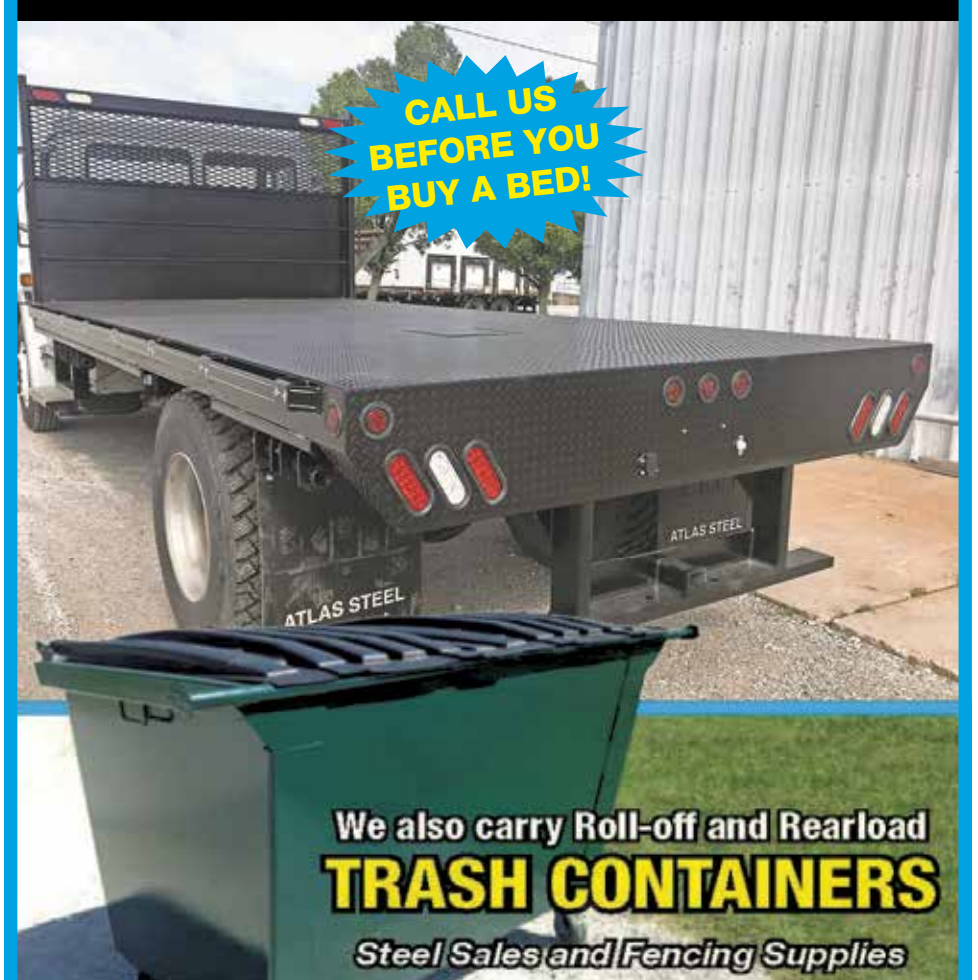
We are **NOT** only here for your **PRINT ADVERTISING NEEDS**, we are a... **PREMIER Google Partner**

We can also help with any of your **DIGITAL NEEDS:**

- Total Website Plus
- Social Advertising
- Direct Email
- Custom Email Program
- Live Chat Leads
- Logo Creation
- Search Engine Optimization
- Search Engine Marketing
- Interactive Video
- Local Listings Builder
- Social Conversations

Contact your Big Nickel Sales Representative today  
**417.624.4100**

**BEDS IN STOCK! CALL FOR PRICING!!**  
**HEAVY DUTY FLATBED**



**Vermeer** | EQUIPPED TO DO MORE.™

Vermeer forage equipment is built tough and known for dependability and value among hay producers who want consistency and smooth performance in a variety of crops and conditions. Designed for ease of operation and with quick, simple adjustments, Vermeer forage equipment gives the operators the power to maximize the hours in a day.

**NOW WITH TWO GREAT LOCATIONS!**

**Anderson, MO 417-436-4444**  
**Welch, OK 918-233-7042**

**Eubanks Equipment**  
Expect the Best  
[WWW.EUBANKSEQUIPMENT.COM](http://www.eubanksequipment.com)  
-THE LARGEST VERMEER AG DEALER IN THE U.S.A.-

**Deweze** **Great Plains** **Husqvarna** **Hustler**

**Atlas Steel Products, Inc.**  
650 ESH ROAD • VINITA, OKLAHOMA  
**877-289-7835 • 918-256-6232**

# PRECISION EXCAVATING

Building Pads - Ponds - Concrete  
Septics - Roads & Driveways  
Land Clearing Demolition  
& much more

Matthew Zimmerman  
Wyandotte, OK  
918-961-2183



Customer Satisfaction  
Is Our Goal!



## DISPENSARY EXTRAORDINAIRE:

Large selection of flower, concentrates,  
edibles and bath and body products.

### HEAD SHOP

with all the latest and greatest in  
smoking accessories and gifts.

### GROW SUPPLY

with everything you need to grow your own.

### THE CORN POPPER

popcorn and concession supplies  
available.

## OUR DAILY SPECIALS

### MUNCHIE MONDAY -

25% OFF edibles

### T-SHIRT TUESDAY - 25% OFF for

wearing a 420 ReLeaf t-shirt

### WACKY WEDNESDAY - 25% OFF all

vape cartridges

### THIRSTY THURSDAY - 25% OFF

beverages & tonics

### FRIED DAY - 25% OFF ALL flower

SHATTER DAY - 25% OFF extracts &

concentrates (excludes vape carts)

### SUNDAY FUNDAY & SPA DAY - Roll

the dice for a chance to win a gram

or an eighth, & 10% OFF bath &

body products.

## EVERYDAY SPECIALS

1 gram vape carts \$20 ALL DAY

EVERYDAY! 1 gram concentrate

starting at \$21<sup>00</sup> 4:20 SPECIAL: ANY

preroll (large selection) for 50% OFF

(1 per patient) from

4:20 to 5:20 daily

## FIRST TIME PATIENTS RECEIVE

20% OFF

NO CARD NEEDED TO VISIT!

CARD ONLY NECESSARY TO

SEE DISPENSARY.

In Historic Downtown Grove

21 W 3rd St.

Grove, OK 74344

918-791-3420

www.420releaf.com

## FARM MISCELLANEOUS

## FARM MISCELLANEOUS

## FARM MISCELLANEOUS

## MISC. LIVESTOCK



# WE SELL LAND

PASSION DRIVEN EXPERTISE.

## TONY CHRISCO

Southwest Missouri Land Specialist

(417) 860-0259

tony.chrisco@whitetailproperties.com



## ASK ABOUT AUCTION SERVICES



WHITETAIL PROPERTIES REAL ESTATE

HUNTING | RANCH | FARM | TIMBER

WHITETAILPROPERTIES.COM



Whitetail Properties Real Estate, LLC - DBA Whitetail Properties | In the States of Nebraska & North Dakota - DBA Whitetail Trophy Properties Real Estate LLC | Licensed in IL, MO, IA, KS, KY, NE & OK - Dan Perez, Broker | Licensed in AR, CO, GA, MN, ND, SD, TN, VA, WI, & WY - Jeff Evers, Broker | Licensed in IL, IN, MI, & WI - Andrew G. Brown, Broker | Licensed in TX - Mike Jones, Broker | Licensed in VA - Bill Moore, Broker | Licensed in AL, GA, TN, & MS - Todd Brown, Broker | Licensed in TN - Chris Wakefield, Broker | Licensed in TN - Bobby Powers, Broker | Licensed in AR - Anthony Chrisco, Broker | Licensed in SC, NC & VA - Chip Camp, Broker | Licensed in NC - Rich Baugh, Broker | Licensed in MI - Edmund Jost, Broker | Licensed in WY - Debbie S. Lauer, Broker | Licensed in ID, MT, OR, UT & WY - Aaron Matthes, Broker



# LIVESTOCK

## CATTLE

(40) BLACK cows, 4-6 years old, fall calvers, bred to black bulls. 417-850-1726.

### BRANGUS BULLS

Gentle, small birthweights. Bulls are service age, virgin bulls, semen checked, raised on forage, and ready to use.

Hatfield Brangus  
Bentonville, AR  
Home 479-273-3921  
Cell 479-531-2605  
email: drchas@cox.net

BREEDING AGE bulls, semen checked, ready to go! Registered Angus heifers and cows; also Commercial bred cows. Ogden Angus Ranch, 417-466-8176.



REGISTERED POLLED  
HEREFORD BULLS will be 18 months old in September, with good dispositions and genetics. 620-778-8561. schlatterherefords.com

LIMOUSIN BULLS, reds and blacks, large selection, bred and open Limousin heifers. Double J Ranch, Will 417-350-9810, 417-214-4567.

PUREBRED HEREFORD and Black Baldy heifers and bulls. Gentle. Pictures available. J&J Farms. Call/text 417-850-8829.

REGISTERED  
CHAROLAIS  
Yearling Bulls. EPDs, BW, WW, YW, big and stout. Weaned heifers and bulls. Wright's Charolais, Mt. Vernon, MO. 417-466-3560, 573-512-1614, 417-466-8117, 417-466-8158

HAVING A garage sale or rummage sale? Call us for special pricing. 417-624-4100.

## CATTLE

REGISTERED  
ANGUS BULLS  
Big, rugged, serviceable aged. Top Performance breeding with low birth weights.

ELBERT ANGUS FARMS  
417-379-2120  
417-489-0438.

REGISTERED  
ULTRABLACK & BRANGUS  
BULLS, \$2000;  
Replacement Heifers, \$1250.  
Top bloodlines. Gentle.

Delivery available.  
Lots of happy customers!  
Discounts for Veterans!  
Horseheadranch.net.

918-695-2357



REGISTERED LIMOUSIN  
bulls and select heifers. Call or text Bruce 417-355-3844 or Cynthia 417-317-4353. shoalcreekcattleco@yahoo.com

REGISTERED RED  
Angus and  
Sim-Angus Bulls,  
yearlings-2 year aged  
advantaged bulls.

DIAMANTE RED  
ANGUS RANCH  
Diamond MO.  
Herdsman Jarrod Todd  
417-846-3248,  
417-325-6292.

**Ron's Auto & Trailer**  
REPAIR & TOWING REPAIR & SALES

\*New & Used Trailers\*  
\*B&W Hitches Installed\*  
\*Rental Trailers\*

11981 Mulberry Rd. Neosho, MO 417-451-5920

## TRAILERS & TACK

# Your Authorized Gooseneck™ Dealer

FRYE FARMS  
The #1 Dealer in  
Missouri for Gooseneck Sales  
\$5 in 2004-2020.  
Reason: PRICE!



Financing available thru  
**Farm Credit Services** BBB  
At the heart of a growing America™

# FRYE FARMS TRAILERS

Seneca, MO • 417-438-0146

Visit Our  
Web Site @  
www.bignickel.com  
to place your  
classified ad.  
See it in print  
& ONLINE

QUALITY FEED at  
Affordable Prices.  
16% mixed feed,  
\$260 a ton,  
\$250 in bulk;  
dry distiller grain, \$300 ton;  
16% mixed feed in  
50lb sacks \$8  
1200lb. box on pallet \$156  
Bulk price \$10 off  
board price.  
Alfalfa squares, \$9;  
Brome and Crabgrass \$6  
Grassy Alfalfa \$6.  
Call for details.  
colleyfeed.com  
Located 4 miles west of  
Stotts City on  
Farm Road 2120.  
Contact: Lance  
417-316-0574.  
Prices subject to change  
without notice.  
Call to inquire.  
Ask about delivery in bulk  
or super sacks.

HAVING A garage sale or rummage sale? Call us for special pricing. 417-624-4100.

**LAZY A LAND SERVICES, LLC**

417 . 316 . 1841

Before

After

- Land Clearing • Forestry Mulching
- Stump Grinding • Driveways
- Dirtwork

**PRECISION LAND SERVICES**

WE CLEAR THE PATH TO YOUR DREAMS

Contact us for a **FREE** consultation and start the process of reclaiming your land. We offer the most ecological form of land clearing.

**ON SITE ROCK CRUSHING:**  
Up to 6" rocks • New construction Yard Preparation  
No small stumps after mulching  
precisionlandservicesllc.com

**Low Impact Eco-Friendly Land Clearing & Brush Cutting**

Before After

Contact us for a free estimate **417-846-3723**

**PASTURE, FEED & SEED**

**WHEAT STRAW**, small squares and big round bales, in barn, net wrapped. 417-540-7845, 417-394-2671.

WANTED: 30+ acres to lease/purchase within 20 miles of Carthage/Joplin with farm house. 417-388-8506.

[WWW.BIGNICKEL.COM](http://WWW.BIGNICKEL.COM)

**PASTURE, FEED & SEED**



**VANDORN SPREADING**  
For all your lime and litter needs. Serving the 4 State area. Marcus VanDorn 417-825-4230, 417-389-1293.

**HORSES & MULES**

**HEARTLAND HORSE AND LIVESTOCK SALES LLC**

535 N Subway Blvd. Nevada, Missouri

Like us on Facebook @Heartland Horse and Livestock Sales LLC for future consignments

**SALES 2nd and 4th Wednesday of the month**

**Owners:**  
Nathan Collins 620-215-4745  
Karrie Collins 620-644-2197

Tack Sale Starts at 5pm with horses and livestock to follow.

**LAWN & GARDEN**

**CUSTOMIZE TO FIT YOUR NEEDS**

**FRONT MOUNT • MID MOUNT**

- Gas or Diesel • 41" to 72" cutting widths
- Front Mount Attachments for year round use: debris • snow • turf

**FARM BUREAU INSURANCE MEMBERS GET 15% OFF MSRP**

**0% FINANCING FOR 48 MONTHS AVAILABLE ON ALL NEW MODELS (with approved credit)**

**NewCo Service**  
11989 Homer Lane Neosho, MO 417-451-2660

The **BIG NICKEL** IS NOW A **PROUD MEMBER** OF THE **PHILLIPS MEDIA GROUP NEWSPAPER FAMILY**

Watch for exciting changes coming soon!

**OUR OFFICE DOORS ARE OPEN!**  
2918 E 20th St, Joplin, MO 64804  
8:00am - 4:00pm • Monday - Friday  
or call us at (417) 624-4100

Call about our classified ad specials. 417-624-4100.

**YARD/GARAGE SALES**

Looking for something **SPECIAL?**

Let everyone know, by placing a wanted ad

**LOOK**

14TH ANNUAL KAN-OKLA 100+ MILE SALE!  
September 10th & 11th (12) towns participating along Hwys. 75 & 60 (NE Oklahoma), Hwys. 166 & 169 (SE Kansas).  
Information: [kanoklahighwaysale.net](http://kanoklahighwaysale.net) 918-214-2443  
Vendor space available.



**YARD/GARAGE SALES**

**CLEAN INSIDE SALE**  
Children's books, clothing, dolls, puzzles, glassware, Depression, much more. Fri-Saturday, Sept. 10-11. Trinity Worship Church, across from Police Station, Goodman.

**ESTATE "TAG" SALE.**  
9/9-9/11, 9am to 5pm.  
2009 Birnamwood Dr., Miami, OK.  
Flyer, directions and photos at [www.tippitstatesales.com](http://www.tippitstatesales.com).  
Masks required.  
918-533-7353.

**ESTATE SALE**  
1630 Morgan Parsons, KS 67357  
Sept. 9th, 10th, 11th  
Thurs., Fri., Sat.  
8am-4pm  
620-238-2116  
55 years of accumulation; 8' oak table, 8 chairs; oak hutch; 4 dressers; complete bedroom set; lamps; mirrors; pictures; 100's of books-most 1st editions; vinyl albums; and lots of miscellaneous.

**NEED TO SELL YOUR HOUSE OR PROPERTY?** Get the best coverage around. Call the Big Nickel and our helpful representatives will assist you in creating your ad. You can even pay over the phone.  
Call 417-624-4100.

**ADVERTISE YOUR Flea Market or Antique Store** in the Antique & Flea Market Directory. Call Billie for more information and special pricing.  
417-624-4100.

**GUNS & SPORTING GOODS**

**WANTED**  
LOOKING FOR property to lease for hunting, south of Joplin. 417-291-7092.

**YARD/GARAGE SALES**

**THE ESTATE Liquidators of Missouri, LLC ESTATE SALE**  
Fri., Sept. 10th, 8am-4pm.  
Sat., Sept. 11th, 8am-4pm.  
2501 ADAM AVE., WEBB CITY, MO.  
North Rangeline turn right on Zora to South Hall, turn left, past trailer park, right on Eden Ave. Parking in back.

**SALE INSIDE HOME AND GARAGE**  
Tools, 8000 watt generator, Great Outdoors chrome 6 burner grill with side burner, with propane tank, heavy duty Kenmore washer and dryer, Rubbermaid 6' tall storage cabinets with double doors, oak dining table, 6 chairs/leaf, couch, leather recliner, fake fireplace, coffee/end table, sofa table, metal futon with mattress, mattress, box springs, dresser, chest of drawers with mirror, treadmill, microwave/stand, small rolltop desk, mini fridge, small appliances, pots, pans, dishes, linens, towels, bedding, patio chair-sets tables.

**A LOT OF VERY NICE ITEMS**  
Let Us Sell for You (WE OFFER A DISCOUNT) CALL FOR YOUR FREE ESTIMATE  
417-291-8363.

**NEED SOMETHING?** Let us help you. You can advertise that you are looking for a special item.  
Call 417-624-4100 for more information.

[WWW.BIGNICKEL.COM](http://WWW.BIGNICKEL.COM)

**WOOD**

**PRATER**  
EST. 1903  
PRODUCTS  
Sawmill/Logging 918-919-9764  
Buying Standing Timber

**BUYING STANDING Timber.** Top prices paid. Full residential service available. Call Josh St. Clair. 417-626-2120.

**NEED SOMETHING?** Let us help you. You can advertise that you are looking for a special item.  
Call 417-624-4100 for more information.

**CLINT RENNER LOGGING**  
Specializing in Walnut, oak and ash. Guaranteed bids, will pile brush, top prices paid. Don't sell too cheap! Honest, Reputable, 3rd generation logger. Call today for free estimate.  
417-439-7954.

**JOSH HARTNESS LOGGING**  
BUYING MOST SPECIES OF STANDING TIMBER  
620-212-0896  
MARKETS ARE GOOD ON BURR OAK, ASH & WALNUT  
FREE ESTIMATES • 25 YEARS EXPERIENCE

**15 WORDS \$11.75 - CALL THE BIG NICKEL TODAY AT 417-624-4100!!**

**CHESHIRE LOGGING**  
BUYING STANDING TIMBER  
• Specializing in Walnut •  
• Top Prices Paid •  
References Available  
**BRENNON CHESHIRE**  
417-540-0421

**WOOD**  
AVOCA OAK LUMBER  
Dimensional lumber, live edge slabs, rough sawed oak. Barn packages, trailer floors, and side boards. Sheldon Shrader 479-790-5614.  
[WWW.BIGNICKEL.COM](http://WWW.BIGNICKEL.COM)

**D&D LOGGING**  
BUYING ALL TYPES OF STANDING TIMBER  
Walnut • Oak  
Ash • Etc.  
Anthony Gruver  
417-437-9633

**BUYING ALL types of standing timber.**  
**LARGE or SMALL Tracts**  
Nick Bradford  
417-451-0820  
417-825-4653

**WOOD**  
CALL ABOUT our classified ad specials. 417-624-4100.

**TOP PRICES PAID**  
Veneer • Saw Logs • Table Top Logs  
Maxwell Helm  
Walnut Log & Standing Timber Buyer  
417-439-3709

**AUCTIONS**

**LIVING ESTATE AUCTION**  
SATURDAY, SEPTEMBER 11, 2021 • 10:00 AM  
8300 GATEWAY DRIVE, NEOSHO, MO 64850

**DIRECTIONS:** FROM I-44 & GATEWAY DR. (TIPTON FORD, DOLLAR GENERAL) TURN LEFT (EAST) ON GATEWAY DR. APPROX. 1.5 MILES TO AUCTION ON WEST SIDE OR FROM HWY 86 & GATEWAY DR (NEOSHO) NORTH APPROX. 4.5 MILES TO AUCTION.

**LUNCH AVAILABLE \* WATCH FOR SIGNS \* BATHROOM PROVIDED**

**APPLIANCES:** MAYTAG ELECT. WASHER & DRYER SET - WHITE; WHIRLPOOL 20 CU.FT. UPRIGHT FREEZER; ASST. SMALL APPLIANCES - CROCKPOTS; GEORGE FOREMAN, ETC. **FURNITURE:** SHERRILL 3 CUSHION SOFA - TAN & BURGUNDY; 3 END & COFFEE TABLES; 2 MARBLE TOP SOFA TABLE; 2 MAUVE SHERRILL WING BACK CHAIRS; WHITE LATTICE TABLE LAMP; SOLID WOOD END TABLE; BRADINGTON YOUNG BLUE OCCASIONAL CHAIR; W/OTTOMAN; 2 OIL LAMPS; PLANT STAND; OAK BLANKET CHEST; HANCOCK & MOORE BLUE WINGBACK CHAIR; OAK CREDENZA CHEST 33"X 28"X 19"D; DUAL LIGHT BROWN RECLINER; SHERRILL SOUTHWEST PRINT WING BACK CHAIR; BURLWOOD TABLE W/BASS LAMP; MAPLE FULL-SIZE BED W/DRESSER & MIRROR; AYERS OAK 3 PC FULL-SIZE BEDROOM SET; AYERS MEDITERRANEAN KING BEDROOM SUITE; W/2 NIGHT STANDS, CHEST, & DOUBLE DRESSER; HOSPITAL BED - TWIN, ELECT.; HOSPITAL BED - TWIN, MANUAL; SOLID MAPLE DROP-LEAF TABLE W/6 CHAIRS; BROWN PLAID RECLINER; MEDITERRANEAN COUCH & CHAIR W/OTTOMAN RETRO PRINT; CLOISSONNÉ TABLE LAMPS; FORMICA DINING TABLE WITH 2 LEAVES AND 4 CHAIRS; LANE LIGHT OAK CEDAR CHEST; SMALL CEDAR CHEST; SINGER SEWING MACHINE & CABINET; 3 STACK OTTOMANS; AMERICAN HOME COLLECTION BURGUNDY LEATHER SOFA; RED AND GREEN PLAID 2 CUSHION COUCH WITH QUEEN SIZE HIDEABED W MATCHING CHAIR AND OTTOMAN; DARK PINE END TABLE; ROUND OAK GLASS TOP END TABLE W LAMP; STEEL OFFICE DESK; OAK ENTERTAINMENT CENTER W GLASS DOOR.

**MISC. HOUSEHOLD:** ASST HARDWARE; ASST STATIONERY SUPPLIES, GIFT BAGS; ASST CLEANING SUPPLIES; ASST VASE AND DECORATIONS; ASST LINENS; KITCHEN LINENS; CRYSTAL DENDY CHINA 12 PLACE SETTING; PLATTERS, TIDBIT TRAY; TABLECLOTHS, PLACEMATS; PLANT STAND; LARGE ARTIFICIAL TREE AND PLANTER; GRANDFATHER CLOCK; 2 SETS WORLD BOOKS; SMALL LOT- HARDBACK, NOVELS; SMALL LOT - WHAT NOTS, FIGURINES ETC.; GOLD FRAME OIL PAINTING; 28" ZENITH TV; MAGNAVOX VHS AND DVD PLAYER; LOT OF ARTIFICIAL PLANTS; MAGIC BOX STEREO; ASSORTED 33 LP RECORD ALBUMS; GWTW LAMP; ASSORTED HOLIDAY DECORATIONS; ROUND AREA RUG; ASSORTED CORNINGWARE; LARGE LOT- COOKWARE, TUPPERWARE; RUBBERMAID, ETC; BROWN IRONSTONE MUGS. **OUTDOOR:** PAIR METAL STORKS; ASSORTED LAWN AND GARDEN TOOL; SEVERAL ICE CHEST; ASSORTED POWER & HAND TOOLS; PATIO FURNITURE. **NOTE:** BETTY BROWN HAS SOLD HER HOME AND IS DOWNSIZING AND MOVING OUT OF STATE. QUALITY FURNITURE THROUGHOUT. NEAT AND CLEAN AS YOU WILL FIND!

**LIVING ESTATE OF BETTY J. BROWN**  
**BETTY J. GRIGGS BROWN TRUST**

**TERMS: CASH, CHECK, 4% CONVENIENCE FEE FOR DEBIT & CREDIT CARDS. 10% BUYERS PREMIUM ON ABSENTEE & PHONE BIDS. PROPER I.D. REQUIRED FOR BIDDER NUMBER. NOT RESPONSIBLE FOR LOSS OR INJURY!**

**VENTURE GROUP AUCTION**  
Featuring  
**BOB LASSWELL**  
Professional Auctioneer Since 1977  
417.850.5444  
PREVIEW ONLINE  
[WWW.VENTUREGROUP.AUCTION](http://WWW.VENTUREGROUP.AUCTION)  
KYLI HIGHTOWER  
Online Auctioneer  
417.388.4827  
Office Number  
417.592.4560  
ANY ANNOUNCEMENTS THE DAY OF AUCTION SUPERSEDE ALL PRINTED MATERIAL

**SUNDAY REAL ESTATE AUCTION**  
SUNDAY, SEPTEMBER 12, 2021 • 1 P.M.  
214 S. TOM STREET, WEBB CITY, MO 64870

**DIRECTIONS:** FROM HWY 171 & MAIN ST. (CASEY'S) IN WEBB CITY, TURN NORTH ON MAIN ST. 2 BLOCKS TO 1ST STREET. TURN EAST (LEFT) ON 3RD STREET TO S. TOM ST., TURN NORTH ON S. TOM ST. TO 214 S. TOM ST. (2ND HOUSE ON WEST SIDE)

**LUNCH AVAILABLE \* WATCH FOR SIGNS \* BATHROOM PROVIDED**

**PROPERTY DETAILS:** 3 BED, 2 BATH, 1,556 SQFT, 2 KITCHENS, 2 LIVING AREAS, 8X8 SHED, \$474 TOTAL TAX

**REAL ESTATE AT AUCTION SELLS AT 2 PM**  
3% BUYERS PREMIUM ON REAL ESTATE PAID BY BUYER. BROKER PARTICIPATION INVITED!  
REALTOR MUST REGISTER POTENTIAL BUYER 48 HOURS PRIOR TO AUCTION. CALL FOR REGISTRATION FORMS.

**FURNITURE & APPLIANCES:** G.E. 22 CU.FT. 2 DOOR FRIDGE - WHITE, EXCELLENT CONDITION; HOTPOINT GAS RANGE - WHITE - EXCELLENT; FRIGIDAIRE PORT. DISHWASHER - WHITE; WOOD STORAGE CABINET; SM. CHILD'S WARDROBE - WHITE; WOOD WALL SHELF; LIGHTED CURIO CABINET; ANTIQUE KITCHEN CUPBOARD W/ FLOUR BIN; WOOD DINING CHAIR; BEIGE 3 CUSHION SOFA; LG WHITE TABLE LAMPS; 2 BOOKSHELVES; KING SIZE BEDDING; OCCASIONAL TABLE W/MAGAZINE RACK; HOT POINT APARTMENT SIZE ELECT RANGE; BLACK BAKER'S RACK; HOME INTERIOR ITEMS; BRASS QUILT RACK; ASST OLD TINS & MISC KITCHENWARE; BRASS QUILT RACK; ENTERTAINMENT CENTER; OAK MICROWAVE STAND. **TOOLS & MISC.:** MISC. POWER TOOLS; L&G TOOLS; 4 POLY TOOLBOXES & CONTENTS; GAS CANS; ELECT - STRING TRIMMER; SCOTT'S REEL TYPE PUSH MOWER. **MISC & HOUSEHOLDS:** 1 LOT FRUIT JARS; COOLERS & ICE CHEST; MEN'S BIKE; SEWING MACHINE & CABINET; STATIONARY & OFFICE SUPPLIES; CEILING FAN; WOOD BABY CRADLE; ASST. LINENS, RUGS; STUFFED ANIMALS; LG LOT YARN, ASST COLORS. **NOTE:** ANNA BARTLETT IS SELLING HER HOME AND DOWNSIZING. IDEAL STARTER, INCOME, OR INVESTMENT PROPERTY! LOTS OF HOUSEHOLD ITEMS IN STORAGE AND UNABLE TO LIST. NEAT & CLEAN APPLIANCES!

**ANNA BARTLETT - OWNER**

**TERMS: CASH, CHECK, 4% CONVENIENCE FEE FOR DEBIT & CREDIT CARDS. 10% BUYERS PREMIUM ON ABSENTEE & PHONE BIDS. PROPER I.D. REQUIRED FOR BIDDER NUMBER. NOT RESPONSIBLE FOR LOSS OR INJURY!**

**VENTURE GROUP AUCTION**  
Featuring  
**BOB LASSWELL**  
Professional Auctioneer Since 1977  
417.850.5444  
PREVIEW ONLINE  
[WWW.VENTUREGROUP.AUCTION](http://WWW.VENTUREGROUP.AUCTION)  
KYLI HIGHTOWER  
Online Auctioneer  
417.388.4827  
Office Number  
417.592.4560

**AUCTIONS**



**New Beginnings ESTATE SALES**  
OF SOUTHWEST MISSOURI  
417-529-9166

**Downsizing/Moving Tag**  
Sale for Danny and Mary Pat Lambeth  
1308 Ashley Drive  
Carthage, MO 64836  
(Breckenwood subdivision on south side of Carthage golf course)

**Saturday Only: Sept 11: 9am-5pm**

The Lambeth's have sold their 6000+ sf home, and we are liquidating their fantastic antique furniture, Pulaski King 5 pc. bedroom suite, living room furniture, Bailey slate top regulation pool table, ping pong table, refrigerators, freezers, tools, antique dining tables and buffets, double sided lawyer desk, household, kitchenware, linens, bed sets, outdoor items, decorations, nice clothing, general merchandise and so much more!

Terms: this is a one day only sale! Prices will be firm from 9am-4pm and 50% off from 4pm-5pm.

Cash, local Joplin check, debit/credit cards accepted with a 4% fee. Not an auction- all items are tagged and priced. Please bring help to move large items! See preview photos on our Facebook page or [estatesales.net](http://estatesales.net).

**Need Extra \$\$\$\$\$**

Have you cut back on all the extras like going out to dinner or the movies?

**Clean Out The Garage!**  
Now is the Time to Get Rid of Unused Items!

Put the 4-state area distribution of



**to Work for YOU!**  
Call: 417-624-4100  
Fax: 417-621-0287  
Email: [classified@bignickel.com](mailto:classified@bignickel.com)  
or place your ad online at [www.bignickel.com](http://www.bignickel.com)

**BARBARA HAVER TRUST AUCTION**  
Fri., Sept. 17th, 9:36am

2141 CR 358  
EUCHA, OK

Boats, Welders, tools, antiques and collectibles, 60 years accumulation.  
[lestermillerauctions.com](http://lestermillerauctions.com)  
918-533-6404



**Increase Your Chances For Sales!**

Classified ads from the Big Nickel are put on our website to reach a larger audience.

## BUILDING SUPPLY AUCTION

**SATURDAY, SEPTEMBER 11TH • 9:30 AM**  
**BAXTER SPRINGS, KANSAS**  
**2404 Cleveland • Baxter Springs, KS • Corner of 24th & Cleveland, 3 blocks E of 69A on 24th St**  
**SALE HELD INSIDE REGARDLESS OF WEATHER**

◆ **DIMENSIONAL LUMBER** – 2x8's and 2x4's ◆ **PINE** – 1x8 and 1x6 T&G ◆ **WESTERN CEDAR** – 5/4 Decking, 1x6 T&G, 1x8 beveled lap siding ◆ **ALASKAN CEDAR** – 5/4 decking ◆ **SOLAR PANELS** ◆ **INSULATION SHEATHING with Shiplap Edge** – 1/2', 3/4' & 1" thickness in 4'x8', 4'x9' & 4'x10' sheets – foil on one side/tar paper on the other ◆ **CULTURED STONE** – good selection of colors ◆ **DECKING** – **Duralife composite** – including fascia in some colors ◆ **COMPOSITE DECKING TILES** – Interlocking **12x12 tiles** - Redwood color – great for patios, verandas and virtually any level concrete or gravel surface ◆ **TJI's/I-JOISTS** – LVLs – **GLULAMs** – **PARALLAMs** ◆ **OSB** – 3/4" T&G ◆ **LP SmartSide 190 Series Trim** - cedar texture ◆ **Pine 1x's** ◆ **6x6 PARALLAMs** ◆ **4x4 PARALLAMs** and **POSTS** ◆ **BRICK and CEMENT BLOCKS** ◆ **VINYL SIDING** – CertainTeed Brand - available in several colors - ◆ **FIBER CEMENT SIDING** 1x6 1/4", 4x8 smooth – great opportunity. ◆ **HARDIE BATTON STRIPS AND TRIM BOARDS** ◆ **PREFINISHED FIBER CEMENT SHAKE SIDING** ◆ **ICE AND WATER SHIELD** ◆ **HOUSE WRAP** ◆ **BARN WOOD DOORS** - real wood doors ◆ **PEX TUBING 1/2"** - red and blue ◆ **INSULATION** – R13, R15 and R19 bats; 5' and 6' wide rolls of r10 – r11.9 – r13 insulation ◆ **PULLDOWN KITCHEN FAUCETS** ◆ **NEW DELTA, MOEN, and HOME IMPRESSIONS FAUCETS:** Vanity and kitchen (NIB) – large selection to choose from ◆ **APPLIANCES: NEW** – Gas Dryer ◆ **WIRE CLOSET SHELVING:** 12" and 16"x12' wire closet shelving. ◆ **FANCY CHANDELIERS AND WALL SCONCES:** Variety of really nice fixtures – retailing \$900-\$3,000. ◆ **VINYL WINDOWS:** New -**JELDWEN** -new construction - single hung – vinyl insulated windows ◆ **KITCHEN CABINETS:** Multiple sets of cabinets – option of stained and painted including: Signature Pearl, Farmhouse Brown, AND Shaker Style in Dark Gray, Light Gray, and White - all wood – prefinished cabinets. Straight and L shaped sets. Some sets include soft close doors and dovetailed drawers. ◆ **VANITIES** – Nice selection of vanities including matching vanities for the Farmhouse Brown, Dark Gray, Light Gray, and White cabinets ◆ **PORCELAIN TILE:** OVER 15,000 SQ FT with many, many, sizes and colors of tile to choose from. ◆ **MOSAIC TILE:** Fantastic selection of glass – travertine – marble – tile – stone including **Subway Tile**. ◆ **WOOD LOOK TILE:** Great selection of styles and colors ◆ **Hardwood Flooring including** ◆ **7" WIDE PLANK WHITE OAK UNFINISHED OAK FLOORING:** Dual faced engineered back flooring – T&G – beveled edge ◆ **PREFINISHED HARDWOOD FLOORING:** 3/4" solid prefinished hardwood floor –including hickory, oak, maple etc. ◆ **7" wide 1/2" thick PREFINISHED PLANK WOOD FLOORING** – hand scraped, wire brush and matte finishes ◆ **SNAP AND LOCK LAMINATE** – small lots ◆ **LVT:** over 10,000 SQ FT of luxury vinyl tile – wood plank – snap lock and glue down - great selection of colors ◆ **LVT ACRYLIC ADHESIVE** – **VMI 91** covers 1,200 sq ft per bucket ◆ **EXTERIOR DOOR UNITS:** Singles – double – with and without glass ◆ **INTERIOR DOOR UNITS AND SLABS** ◆ **TRIM: BASE – CASING – CROWN: MDF,** finger joint **PINE and OAK;** AS WELL AS **OAK** quarter round, cove, base shoe, and door stop. ◆ **ENTRY – PASSAGE – PRIVACY DOOR KNOBS AND LOCKS** ◆ **QUARTZ:** Maple White in various sizes – countertops – island panels, with and w/o sink cutouts. 3cm quartz ◆ **VANITY TOPS** available in **QUARTZ, MARBLE and TRAVERTINE** – includes undermount, overmount, and vessel style tops ◆ **KITCHEN SINKS:** SS – Composite – varying styles and colors. ◆ **CEILING FANS** - nice selection ◆ **TOILETS** ◆ **PEDESTAL SINKS** ◆ **MINI SPLIT AIR CONDITIONERS/HEAT PUMP** – 12,000 BTU - Indoor Units ◆ **TOWEL BARS and RINGS, TOILET PAPER HOLDERS, ROBE HOOKS, TOOTHBRUSH HOLDERS** ◆

**COME FOR THE DAY AND SAVE LOTS AND LOTS OF \$**  
**MT. VERNON AUCTION CENTER**  
• No Buyer's Premium •  
**MORE COMING IN DAILY** - check sites often  
For pictures see Mt. Vernon Auction Company on [Auctionzip.com](http://Auctionzip.com) (enter ID#29728 at bottom of page) or Facebook  
**CELL 870-754-4428 • 870-715-5479 • 870-715-2326 (text only)**  
**All items left over 30 days will be forfeited!!!**  
**All announcements made the day of auction will supersede previous advertising.**

**13th Annual Fall Consignment Auction**  
Saturday, October 30, 2021 @ 9:00am  
**NEW LOCATION!!!**  
Circle E Auction 1551 14000 Rd. Altamont, KS 67330  
1.5 miles east of Altamont, or 9 miles west of Oswego, KS on Hwy. 160  
**Free Advertising! Bring Your Items NOW!**  
**Deadline for Newspaper Advertising: Fri. October 1, 2021**  
**Expecting tractors, farm & construction equipment, tools, building supplies, lawn & garden & much more!**  
**One Piece or A Complete Sell Out**  
Online bidding will be available @ [circleeaauction.com](http://circleeaauction.com).  
To have your equipment available for online bidding, your equipment **MUST** be on our lot by Tuesday, Oct. 26<sup>th</sup> @ 5:00 PM. All consignments taken on Wednesday & Thursday will not be available for online bidding!  
**NO CONSIGNMENTS ACCEPTED AFTER THURSDAY, OCT. 28 @ 5:00 PM.**  
We are open Mon.-Fri. 8:00-5:00, Sat. By Appointment Only.  
**COMMISSION RATES:** \$5 Minimum Commission Per Item, \$0-\$100 20%, \$101-\$500 15%, \$501-\$1200 12%, \$1201-\$2000 10%, \$2001-\$5000 8%, \$5001 & up 6% with a max of \$1000 per item. \$35 No sale fee per item. There will be a \$25 title fee on all titled items.  
**All Titles MUST Be Present at Check-In**  
Consignor checks will be mailed on Friday, Nov. 12, 2021  
No checks issued for amounts less than \$5.00



**Circle E Auction LLC**  
Your Farm Auction Specialists!

Auctioneer Ervin Eicher 417-310-0812	1551 14000 Road Altamont, KS 67330	Auctioneer Merlin Eicher 417-310-3324
--	---------------------------------------	---

The **BIG NICKEL** IS NOW A **PROUD MEMBER** OF THE **PHILLIPS MEDIA GROUP NEWSPAPER FAMILY**

Watch for exciting changes coming soon!

**OUR OFFICE DOORS ARE OPEN!**  
2918 E 20th St, Joplin, MO 64804  
8:00am - 4:00pm • Monday - Friday  
or call us at (417) 624-4100

**WELDING CONSTRUCTION & TEL COM COMPANY  
LIQUIDATION  
AUCTION**

**SATURDAY SEPTEMBER 18TH, 10:00 AM**

**LOCATED:** 7608 HWY 160, WALNUT SHADE MO: FROM HWY 65 & US-160 FORSYTH/REEDS SPRING EXIT GO EAST ON US-160 E, GO 1.7 MILES TO AUCTION ON RIGHT. FOLLOW SALE SIGNS.

**BREAKFAST & LUNCH AVAILABLE**

**FOR PICTURES SEE WEBSITE OR AUCTION ZIP.COM**

**TELECOM EQUIPMENT AND SUPPLIES SELLING @ 12:30**

**MINI VAN & TRAILERS:** 2008 TOYOTA SIENNA XLE MINI VAN, 7 PASSENGER LOADED 234,000 MILES\*\*5'X8' SINGLE AXLE TILT TRAILER\*\*18' TANDEM AXLE BUMPER TRAILER\*\*5X10 INTEL ROAD RUNNER BOX TRAILER\*\* **CLIMBING GEAR:** SKY CLIMBER BASKET MODEL LNX1000 W/350' STEEL CABLE & 300' ELECTRIC CORD LAST CERTIFIED MARCH 2019\*\*SPIDER BASKET MODEL ST-180 W/350' STEEL CABLE & 300' ELECTRIC CORD LAST CERTIFIED DEC 2019\*\*HARKEN GAS POWER SEAT ASCENDER\*\*PETZL ASCENDER ASCENSION HANDLED ROPE CLAMP/ASCENDER GRAB PZ-B17ARA EN 12841\*\*3/8" CABLE GRABS, 15 3M DBI-SALA LAD-SAF X3 DETACHABLE CABLE SLEEVE 61600054, 1 NEW IN BOX, 5 GME RG-5000, 13 TUF-TUG TTWG-500\*\*232 STEEL CARBINERS, 4 1/2 X 2 3/4" W/3/4" GATE, 4 7/8" X 3 1/8" W/3/4" GATE, 7 X 3 3/4" W/3/4" GATE, 8 1/4" X 5 1/2" W/2 1/2" GATE\*\*14 ISC 1/2" DESCENDER D5-RED, 9 PETZI I'D SELF BRAKING RED\*\*18-ERGODYNE ARSENAL 5030L WATER RESISTANT DUFFEL HARNESS BAG\*\*13 PETZI GRILLON ADJ POSITIONING LANYARD 2 METER, 13 WITHOUT LANYARD\*\*15 GME SUPPLY HEAVY DUTY CORDURA CANVAS BOLT BAG, 13 BULL PIN & BOLT BAG, 5 LG UTILITY POUCH W/LEATHER BOTTOM\*\*11 DBI/SALA 9501403 SUSPENSION TRAUMA SAFETY STRAP, 9 ELK RIVER 29023 NON ADJ POSITIONING LANYARD, 3 PETZI PZP50A RESCUE HIGH EFFICIENCY SINGLE PULLEY\*\* 14 GUARDIAN FALL PROTECTION 01505 1/2" ROPE GRAB, (7) 01508 1/2"-5/8" ROPE GRAB W/GUIDE ROLLER\*\*SHOCK LANYARDS, HONEYWELL FALL LIMITER MFL-1-Z7/6' 400 LB RATING, 11-3M DBI SALA 1246012 SHOCK ABSORBING LANYARD EZ STOP W/SNAP HOOKS\*\* SPREADER BARS, (3) 3M DBI SALA STEEL SPREADER HOOK\*\* (8) WESTFALL Pro 7475 SPREADER BAR\*\* TERMINATION PLATES, 11 MSA 14055R0316 SRIW1000 310 LB RATING, (2) TRACTEL TR-V4260 310 RATING\*\*TOWER CLIMBING HARNESSES INCLUDING DBI SALA, ELK RIVER, WESTFALL PRO, ALUMINUM, PLATINUM, STEEL, SMALL, MEDIUM, LARGE\*\*Y LANYARDS, ELK RIVER, FALL TECH\*\* **LINE AND ANTENNA:** BANDING, 10 NEW 1/2" 201 SS .030" THICKNESS 100' STAI-LOC STAINLESS STEEL UNCOATED BANDING W/TOTE\*\*400-NEW 1/2" BANDING CLIPS STAINLESS STEEL WING SEAL\*\*CABLES VARIOUS AIR SCALE RJ45 AND MORE\*\*CADWELL PLUS ELECTRONIC EXOTHERMIC WELDING DELUXE KIT COMPLETE\*\*CHANNEL SPRING NUTS VARIOUS QUANTITY\*\*COMPRESSION LUGS VARIOUS SIZES & QUANTITIES\*\* GROUND BARS VARIOUS QUANTITIES\*\*HANGERS, CUSHIONS, SNAP INS & HOISTING GRIPS VARIOUS SIZES & QUANTITIES\*\*HARDWARE VARIOUS QUANTITIES OF 3/8" SS BOLTS, NUTS, LOCK WASHERS, WASHERS\*\* HEAT SHRINK VARIOUS WIDTH & LENGTH OF BLACK & CLEAR\*\*ICE BRIDGE 12" X 90" & 24" X 120\*\*JUNCTION BOXES 2 NEW 12" X 12" X 6\*\*VARIOUS TYPES & QUANTITIES TAPE SUCH AS SELF AMALGAMATING 1-1/2" WIDTH X 15' LENGTH PROVIDES WATER TIGHT SEAL\*\*VARIOUS SIZES & QUANTITIES U-BOLTS\*\*APPROX 250' 600V #6 WIRE\*\* **RIGGING:** (5) KLEIN KT55360, (5) KT62135, (5) GME ROPE BAGS\*\*12 STEEL BEAR PAW RIGGING PLATES WLL 2500 LBS W/DOCUMENTATION\*\*(4) JET JLP-025A-5 1/4 TON COME ALONG MINI PULLER\*\*3) COFFING 3/4 TON LOAD LSB-1500B-10 STEEL RATCHET LEVER HOIST W/HOOK\*\*6', 8', 10', 20' LIFT ALL TUFLEX POLYESTER ROUND SLINGS\*\*(45) GME SUPPLY GM-5109S 12" X 15" NOSE BAG W/SWIVEL HOOK 150L LB RATING\*\*(70) ELK RIVER REBAR SNAP HOOKS\*\*(30) 3/8" 1 TON, (40) 5/8" 3-1/4 TON SHACKLE ALLOY SCREW PIN ANCHOR, GALV BODY & PIN\*\* **ROPES:** 4 MILES OF ROPE, 1/2" KERN MANTLE, 3/8" LOAD LINE, 1/2" NOVA BLUE DOUBLE BRAIDED, 5/8" DOUBLE BRADED ALL VARIOUS LENGTHS AND COLOR\*\* **TOOLS & MISC:** MILLER MATIC 210 ELECTRIC WELDER\*\* MILLER XMT 350 CC/CV MULTI PROCESS WELDER\*\*(5) MILLER TRAILBLAZER 325 EFI KOHLER ENGINE GAS WELDER/GENERATOR W/ARC REACH\*\* LINCOLN ELECT 110V 140 WELD PAK\*\*LINCOLN ELECT 255\*\*MILLER SYNCROWAVE 250\*\*SUIT CASE WIRE FEED WELDERS, MILLER X-TREME 12VS, (5) LINCOLN ELECTRIC LN25 WELDERS\*\*WELDING ROD, CUT ROD, GOUGE ROD, WELDING WIRE ALL KINDS & SIZES\*\*WELDING HOODS, GOOGLES\*\* FIRE BLANKETS\*\*COMPRESSED GAS\*\*WELDING BRUSHES, CONTACT TIPS, \*\*1 LOT WHEELS & TIRES ST235/85R16 14 PLY, (6) NEW, ST235/85R16 10 PLY, 225/70R19.5 (3) NEW, LT235/80R17 \*\* 1 LOT WIRE ALL KIND & SIZE\*\*SEVERAL TARPS ALL SIZES\*\*1 LOT PAINT & SUPPLIES\*\*COMPRESSION LUGS\*\*CHANNEL SPRING NUTS\*\*ALL THREAD/THREADED ROD\*\*1 LOT BOLTS ALL KIND & SIZES\*\*GRINDING WHEELS, WIRE WHEELS, BRUSHES ALL KINDS\*\* SAW BLADES ALL KINDS & SIZES\*\*CUT OFF WHEELS\*\*CORE DRILLING BITS, EXTENSIONS\*\*BREAKER HAMMERS (JACK HAMMERS) BITS, CHISELS, CONCRETE BUSHING HEAD, CONCRETE ROUGHENER, MASONRY\*\*TOWER PAINT\*\*PNEUMATIC OIL, ANTI FREEZE, 4 CYCLE FUEL, SYNTHETIC OIL\*\*ELEPHANT ARMOR, EPOXY, FIRE ICE, GROUT & GROUT PRODUCTS\*\*CLEANERS, CAULK, CHALK, GLUE, LOCTILE\*\*CORE DRILLING LUBRICANT, CUTTING FLUIDS, PLASTIC BUCKETS\*\*BRAKES, CAPS, HUBS, SEALS\*\*VEHICLE FUSES\*\*VERY LG LOT AMMO CANS\*\*FUEL CANS\*\*275, 425 & 450 GAL WATER STORAGE TANKS\*\*FLASH LIGHTS\*\*1 LOT BUNGEEES & RATCHET STRAPS\*\* CORE DRILLING CB744, CORDS, DK32\*\*EPOXY TOOLS\*\*ALBION EPOXY BATTERIES, CHARGERS\*\*EPOXY GUNS\*\*14", 18", 24" HEAVY DUTY PIPE WRENCHES\*\*HAMMER DRILLS ALL BRANDS\*\* LG ANCHOR DRILL STANDS\*\*CORE DRILL CAPS\*\*DOT SAFETY SUPPLIES, TRIANGLES\*\*EUROBOOR MAGNETIC DRILLING MACHINE\*\*ALLEN WRENCHES, BIT EXTENSIONS, TRANSFER PUNCHES\*\*1 LOT DRILLS ALL KINDS\*\*ELECTRICAL CORDS ALL KINDS AND LENGTHS\*\*LED LIGHTS\*\*DEWALT, MAKITA, RIGID TOOLS\*\*BAND SAWS, CIRCULAR SAWS, CUT OFF SAWS, DIE GRINDERS, ANGLE GRINDERS\*\*50K, 80K, 75,000 BTU HEATERS\*\*SAWZALLS\*\*SHEAR WRENCHES\*\*ALL FASTENERS\*\*NEXGEN TOOLING\*\*MAKITA SHEAR WRENCH\*\*SEVERAL SHOP VAC\*\*WATER PUMPS\*\*METERS\*\*GOPROS\*\*RADIO'S & CHARGERS\*\*NEW RIDGID 72" CABLE EXTENSION FOR INSPECTION CAMERA\*\*SELF LEVELING LASERS, DIGITAL ANGLE LOCATOR MAGNETIC\*\*FIRE EXTINGUISHERS\*\*SOCKET SETS, NEEDLE NOSE PLIERS, SQUARES, HAMMERS, SCREW DRIVER SETS, T-BEVEL, WIRE STRIPPERS\*\*TOOL BOX CART W/WHEELS\*\*HEAVY DUTY ALUMINUM TOOL BOX\*\*HAND TOOLS, ADAPTERS, EXTENSIONS, RATCHETS, SOCKETS, SOCKET SETS\*\*BALL PEEN HAMMERS 8OZ-32 OZ\*\*CLAMPS, GRIPS, CUTTERS\*\*BULL PINS, CHISEL, WEDGE, BREAKER BARS, PRY BARS\*\*MAGNETS\*\*MEASURING CALIPERS\*\*COMBINATION SQUARES\*\*LEVELS\*\*300' TAPE MEASURES\*\*COMBINATION WRENCHES\*\*CRESCENT WRENCHES\*\*KNOCKER WRENCHES\*\*RATCHET COMBINATION WRENCHES\*\*TORQUE WRENCHES\*\*L & A ELECTRONICS\*\*L & A HAND TOOLS\*\*SEVERAL ALUMINUM & FIBERGLASS LADDERS\*\*SHOP STIRRERS\*\*PNEUMATIC\*\*AIR CHIPPING HAMMER\*\*AIR COMPRESSORS\*\*AIR DIE GRINDERS\*\*AIR HOSES\*\*AIR SCALERS\*\*PORTABLE GAS GENERATORS\*\*PULL TEST EQUIPMENT\*\*PADLOCKS\*\*10-30KW DIESEL GENERATOR\*\*OXYGEN & ACETYLENE WELDING HOSE, CUTTING TORCHES\*\*TEMPERATURE GUNS\*\*(5) KENWOOD TK-3400U4P 4 CHANNEL RADIOS\*\*(2) KENWOOD TK-3400U4P 16 CHANNEL RADIOS\*\*(16) CHARGER BASES & CORDS\*\* (2) NEW BATTERIES\*\* (3) USED SM ANTENNAS\*\*(4) LONG ANTENNAS\*\*(6) BELT CASES\*\*(3) OLYMPUS TG-830 CAMERAS W/CASES, CHARGER CORDS & WALL CHARGERS\*\* CS UNITEC MAGNETIC DRILL 4" REVERSIBLE VARIABLE SPD MAB 825 W/PELICAN CASE\*\*(2) RIDGID 2032-OS JOBOXES\*\* 8'X2'X3/16" WORK BENCH\*\*96"X53"X1" WELDING TABLE\*\*CENTRAL MACHINERY 20 GAL PARTS WASHER W/PUMP\*\*JOBBOX 6520\*\*KOBALT 0241568 MIXER\*\*CENTRAL MACHINERY 13" 16 SPD DRILL PRESS\*\* **AUCTIONEER NOTES:** THIS IS A VERY LARGE AUCTION, MANY MANY ITEMS TO NUMEROUS TO MENTION. EVERYTHING IN WORKING ORDER. GREAT OPPORTUNITY TO SET UP YOUR OWN BUSINESS. PLEASE PLAN TO ATTEND!!

OWNER

PAUL & TAMMY WOOD

SALE CONDUCTED BY

MELTON AUCTION & REALTY CO LLC

ROGER MELTON NIXA MO

PH 417-830-0153 OR 417-725-1801

BRAD COLE NIXA MO PH 417-840-2950

TANNER FOSTER GALENA MO PH 417-840-5519

**ANNOUNCEMENTS MADE ON SALE DAY WILL TAKE PRECEDENCE OVER ANY OTHER PRINTED MATERIALS. NOT RESPONSIBLE FOR ACCIDENTS OR LOSS OF ARTICLES ON OR NEAR SALE SITE.**

EMAIL: roger@meltonauction.com

WEBSITE: MELTONAUCTION.COM.

**AUCTIONS**

**AUCTIONS**

**AUCTIONS**

**PUBLIC AUCTION**

See [www.mastersonauctionservice.com](http://www.mastersonauctionservice.com) for more details, Google map, and photos **September 11th, 2021 at 10:00 a.m. - 9201 Hwy 137, Miami, OK 74354**

**Directions:** Junction of Hwy 10 and 137 (Shawnee Grocery) head north 0.9 miles, sale will be on your left.

Watch for signs.

The Lankfords are in the process of selling their home and are offering the following items for auction.

**Kitchen:** SS cookware pots, pans, saucepans, skillet with lids (mostly Circulon), pie pans, waffle maker, stock pots, canisters, tumblers, mugs, misc glassware, deep fryer, crockpot, coffee server, pressure cooker, George Foreman, cookbooks, crock bowls (sound)

**Furniture:** Curio cabinet, end tables, mirror, kitchen table w/ 4 chairs and bench, upright Frigidaire freezer, Kenmore refrigerator, child's round chalkboard table, kerosene lamps Tools: benchtop drill press, floor jacks, Stihl 028 AV Wood Boss chainsaw, Stihl FS 80 weed eater, Workmate, power washer, air compressor, drill bits, hole saws, sockets, 6' & 8' folding tables, skill saws, DeWalt radial arm saw, Delta miter box, two chest type roll around tool boxes, air hose, reels, ladders

**Hunting/Fishing:** Martin compound bow (Jaguar), coleman stove, Motorguide trolling motor, ice chests, live traps, pop up canopy

**Misc:** Old Radio Flyer wagon, chicken coup, bird bath, feed dolly, well pump, gas cans, metal lawn chairs, raised garden beds, metal arbor, handicap accessories, shovels, plastic shelving, flower pots, Christmas and much more! 2004 Chevy Z71 Silverado Pickup 200k miles runs great!

**Note:** I don't look for this sale to take a long time. The quality of the merchandise definitely outweighs the quantity.

**Said sale day supersedes written material.**

**Terms:** ccash, check (proper ID), credit and debit cards accepted (4% convenience fee) Items to be removed sale day unless other arrangements made. .Not responsible for accidents.



Masterson Auction Service, LLC  
Auctioneer Chad Masterson 918-533-4853

JM-0009321

**OLD GLORY AUCTIONS AND ESTATE SALES**

**Outstanding Antique & Collectible Tag Sale**

**14991 Cty. Rd. 235, Oronogo Mo. 64855**

**ONE DAY ONLY! Saturday, September 11th, 9am-4pm**

**Cash, Debit, or Credit Cards ONLY! (5% fee on all cards) NO CHECKS!**

We have just begun processing items from a prolific local collector, along with several select quality consignments! This single day, tag sale extravaganza is one you won't want to miss! Mark your calendar now for September 11th! Everything a guy could want, all in one location! And there is plenty for the ladies as well!

A wide variety of unique Antiques, Firearms, Ammo, Primitives, Sterling Silver, Jewelry, Knives, Paper Ephemera, Textiles, Turquoise, Taxidermy, Toys, and a Large Nascar Diecast Collection! The bulk of the collection has been packed and stored for decades, and we have just begun to examine it all! All items will be individually priced for immediate purchase! Make plans to join us for this super safe, mega fun, outdoor tag sale event!

**Gates will open promptly at 9 AM.**

**Entry numbers will not be issued.**

**Announcements day of sale supersede all published material.**

**Like us on Facebook for notifications and sale updates!**

**Visit us at [Estatesales.net](http://Estatesales.net) for photos!**

**For questions, please call 417-483-1867.**

**OLD GLORY AUCTIONS AND ESTATE SALES!**

**THE HONEST, EXPERIENCED CHOICE,**

**WHEN YOU NEED TO SELL!**

JM-0009903

**AUCTION**

**SATURDAY, SEPT 11TH • 9:00 AM**

**6497 Lawrence 1097, Mt. Vernon MO. 65712**

**DIRECTIONS:** From Mt. Vernon MO. Take Hwy 39 North to 96 Hwy Then West on 96 2 Miles to Farm Road 1097 Then South 1/4 Mile to Auction - Signs POSTED.

**PICK UP:** 2002 Ford Ranger - with 184 K Miles 4x4 Stop Side, 4.0 L, Auto, Silver, Runs Good.

**GUNS & AMMO:** Not on Premises Until Sale Day Winchester Model 97 12 ga. Pump; Marlin Model 783 .22 WMR. Tube Fed; Winchester Model 67 A .22 Single Shot; Remington Field Master Model 572 .22 Pump; Stevens Model 73 .22 Single Shot; Winchester Model 670 .270 with Scope; J.C Higgins .22 Single Shot; Navy Model 1851, Black Powder .36 Revolver; Navy Black Powder .44 Revolver with Holster; Davis Model D-38 38 Special 2 Barrel Derringer; .270, .22, .38 Spl, .22 Shot & 12 Gauge Ammo.

**BEE SUPPLIES:** Honey Extractor, Hives & Bee Keeping Supplies.

**MISCELLANEOUS:** J.D X300 Riding Mower; J.D 518 R Tiller; J.D Chain Saw; J.D Service Manuals; Large Lot Used T Post; Large Mac Roll Around Tool Box; Large Lot of Horse Bits; Calf Chute; 2- JD Disc's; Scrap Iron; Lots of Shop Equipment; Xtra Large Lot of Shop Tools; Furniture; Household; Saddle; Old Crocks; Anvil; Ant. Metal Wheels; And Much, Much, More!

Go To [www.Auctionzip.com](http://www.Auctionzip.com) For Photos

Auctioneer # 39479

Owner Cecil Caddick

Auction Conducted By Ross Auction Service LLC.

Auctioneer Dallas Ross

**417-466-8368**

JM-0009251

# ESTATE AUCTION

Sunday, September 12th, 2021 ~ 1:00 PM

LOCATION: 27884 South N Hwy, Sheldon, MO; Directions: From I49 At Sheldon Go West 4 Miles To Sale Site (Watch For Signs)

Auction For Jim & The Late Sherry Key



### Antique Furniture, Also Antiques, Collectibles, Households & Misc

1800's Special Ordered & Made English China Buffet W/Ornate Carvings & Large Claw Feet, 1800's Special Ordered & Made English Sideboard Buffet W/Ornate Carvings & Claw Feet (Both Pieces Are Very Rare), Ant Oak Singer Treadle Sewing Machine, Ant Eastlake Style Bookshelf, Ant Smoker Stand, Ant Trunk, Prim Cabinet, Prim Chest Of Drawers & Nightstand, Oak Kitchen Table, Oak Kitchen Chairs, TV & Stand, 2 Speakers, Drum Set, Electric Guitar, Telescope, Old Mizzou Football Card Set In Frame, Chuck Wagon Dinner Bell, Sleigh Bells, 4 Gallon Kings Crock, Copper Boiler, Old Oil Lamps, Old Teapots, Old Pottery Inc Hull & McCoy, Chicken & Rooster Collection, Pink & Green Depression Glass, Black Amethyst Glass, Tupperware, Pots, Pans & Dishes, Sm Kitchen Appliances, Other Items Not Listed

### Tractors, Brush Hogs, Trailers, Hay Equipment & Farm Related Items

C. Allis Chalmers Tractor W/Wide Front End,

Massey 1240 Diesel 4x4 Tractor W/1246 Loader & Dual Hydraulics (Very Nice), 10 Ft Bush Hog, Two 5 Ft Bush Hogs, 8 Bale Hay Trailer, 9 Ft New Holland 617 Disc Mower, 6 Wheel V Hay Rake, Side Delivery Rake, 1 Bottom Plow, 15 Gallon Sprayer, 16 Ft Flatbed Trailer, 4x6 Homemade Trailer, Calf Or Sheep & Goat Squeeze Chute, Hay Ring, Stock Tank, 2 Lick Tanks, 2 Saddles 1 Like New, Some Scrap Iron, Other Items Not Listed

### Camper, Autos, 4-Wheeler, Tools & Outdoor Related Items

2006 Flagstaff Bumper Pull Camper W/1 Slide, 2010 Pontiac G6 Four Door Car Has 4 Cy Motor, Auto Trans W/Approx 26,000 Miles W/Salvage Title, 2000 Ford Ranger 2 Wheel Drive W/4 Cy Motor W/Approx 160,000 Miles, 2012 Can-Am 70 Four-Wheeler, 250 Gallon Propane Tank, Cement Mixer, Chainsaw, 2 Push Mowers, Front Tine Tiller, Weed Eaters, Leaf Blower, Alum Ladders, Table Saw, Band Saw, Grinder, Wheelbarrow, Car Ramps, Pick Up Bed Liner, Sm Air Compressor, Hydro Flow Parts Washer, Lg Lot Sm Hand Tools, Sm Electrical Tools, Long Handle Tools, Electric Motor, Used Tin, 2 Yard Toy Cars For Kids, Bikes, Golf Clubs, Coolers, Iron Outdoor Furniture, Smoker, Concrete Yard Décor Inc Fountain, Birdbath & Statues, Other Items Not Listed



**Auctioneers Note:** It Is An Honor To Be Conducting This Auction For The Key Family As We Have Known Each Other For Many Years. This Auction Will Have Something For Everyone With Lots Of Sought After Good Items From Excellent Antique Furniture & Antique Pieces To Great Tractors, Equipment, Autos, Tool & Outdoor Items. This Is An Auction You Do Not Want To Miss. Please Plan Now To Attend. **Sale Order:** Furniture Will Sell First Followed By Antiques, Collectibles & Households. At Approx 3:30 PM Will Offer Camper, Autos, Tractors, Equipment & Large Items. Tools & Outdoor Will Finish Auction. See Ya There!!!  
Terms: Cash or check with proper ID. No accepting most major credit cards. Nothing removed until settled for. Statements made the day of sale takes precedence over printed material. Everything sold as is where is. Not responsible for accidents. Restroom available. Concessions Provided By Barker Concessions. Check our website for upcoming auctions and for additional pictures!!

## NANCE AUCTION SERVICE

No Matter How BIG or small, We Do Them All!!!

Col. Bill Nance 417-214-0093      In God We Trust      Philippians 4:13

### AUCTIONS

NEED SOMETHING? Let us help you. You can advertise that you are looking for a special item. Call 417-624-4100 for more information.

PLEASE PLACE your classified ads on The Big NICKEL website. Our web address is www.bignickel.com

### AUCTIONS

CITY OF JOPLIN ANNUAL AUCTION  
Saturday, Sept. 18th, 9am  
1301 W. 2nd St., Joplin  
See next week's Big Nickel for listing or  
[www.auctionzip.com](http://www.auctionzip.com)  
ID# 5591.  
Bob 417-434-7389  
John 417-291-2426

### AUCTIONS

HOAGBA/GARDNER AUCTION,  
September 11, 8am,  
Fairgrounds, Gardner, KS.  
For information and consignments:  
<https://hoagbagardnerauction.org>  
or call 913-879-2587.

[WWW.BIGNICKEL.COM](http://WWW.BIGNICKEL.COM)

# PUBLIC ONLINE & ON-SITE AUCTION

Thursday, September 16, 2021

STARTS @ 9:33 A.M.

Location: 3486 E. 480 Rd. • Pryor, OK 74361

Directions: From Pryor, OK at Jct of Hwy 69/20, Take Hwy 20E 6 1/2 mi to Rd 438 (Salina Highbanks Speedway) Turn Left (N) Go 2 mi to Auction on Right. (Stay Right on Curves!) OR From Salina, OK, Take Hwy 20W approx. 2 miles to Rd 438 (Salina Highbanks Speedway). Turn Left (N) Go 2 mi to Auction on Right. (Stay Right on Curves!) Parking on property available.

For More Info & Pictures:  
[www.chuppsauction.com](http://www.chuppsauction.com)

**TELEHANDLER, BACKHOE, SERVICE TRUCKS, TRAILERS, LIFT VANS, BOATS, SCISSOR LIFT, STORAGE BUILDINGS, LARGE PAINT SPRAYERS, AIR COMPRESSORS, RED IRON, NEW PLYWOOD, ROOFING MATERIALS, SCAFFOLDING, LADDERS, CHOP SAW, LAWN MOWERS & ENGINES, TIRES & RIMS, GUNS, BANK FILE CABINETS AND BOAT DOCK**

LIVE ON-SITE & ONLINE BIDDING ON LOTS 51 - 78 START @ 11:11 AM

OWNERS: **DAWSON ROOFING COMPANY**

**Auctioneer's Note:** Dawson Roofing Company will be selling all of their surplus equipment and supplies. Loading assistance will be available day of auction. Follow us on Facebook for updates or our visit our website for pictures at [www.chuppsauction.com](http://www.chuppsauction.com)

NOT RESPONSIBLE FOR ACCIDENTS. ANY ANNOUNCEMENTS DAY OF SALE SUPERSEDES PREVIOUS ADVERTISING.

## CHUPPS AUCTION & REAL ESTATE

Stan Chupp  
(918) 638-1157

Dale Chupp, Realtor  
Coldwell Banker Neokla Select  
(918) 630-0495

JM-00099315

## Estate Auction

Shirley Creason

Sunday September 12, 2021 @ 1:00 PM

Located at 3351 S 630 Rd Quapaw OK

Directions: In Quapaw take 69A toward Baxter to E 30 Rd, turn right on E 30 go 1 mile to 630 Rd, turn right 1/2 mile to sale site on the right, watch for signs!



**Household item Tools and Miscellaneous:** Media Center, craft items, 45" flat screen Samsung TV, hard-rock maple rocking chair with stool, 4 maple end tables, portable kitchen island, table lamp, vanity cabinet 5" tall, blender, soda stream, hand mixer, Hamilton can opener, microwave egg cooker, microwave pressure cooker, medical equipment, pantry cabinet with drawers, miscellaneous kitchen items, Red Copper square pan new in box, glass bake, oak table and 4 pattern back chairs with leaf, paper shredder, several chicken decorative items, glass door cupboard, set of China, old glass salt and pepper shakers, decorative blue tupperware type containers, vented storage dishes, Rachel Ray pieces multiple baking dishes, Pioneer Woman baking dishes, Rival microwave oven, miscellaneous glassware, Jewel T, barn lantern, fishing basket, egg scale, decorative tins, toaster oven, toaster, apartment sized front load Whirlpool dryer, Kenmore front load washer, cleaning supplies, large amount of Americana decor, weaved basket, spice rack, hand painted cookie jar, set of 3 Pyrex mixing bowls with lids Spring Blossom style, salesman sample sifter, rolling pan, Faberware cooking utensils, Presto kitchen kettle steamer cooker, crock pot, vinegar bottles, pressure cooker, new wave small oven, Keurig, Sentsi, trash can foot operated, large set of flatware, miscellaneous kitchen utensils, specialty kitchen utensils such as slicer, Dubl Handi washboard, Lazy Susan, Homco decorative items, small occasional table, shower chair, black and green lacquer bedroom set with king size headboard very nice, oriental dolls, lots of electric clippers, several area rugs, steam mop, iron, 32" flat screen Element TV, linens and towels common multiple comforter sets, small metal footed stool, 53 inch 7 1/2 foot tall white Christmas tree pre-lit, Sansui 24" flat screen TV, light bulbs, decorative table runners and tablecloths, several boxes of new items from Home Shopping Network, picture frames, bed wedge pillows, crochet items, oriental wall decorations, two door cabinet, 32" Sharp flat screen small TV, miscellaneous movies, two Sadd irons, several pair of new shoes 8 1/2 to 9, kerosene lamp, afghans, computer stand with monitor and keyboard, 2 drawer plastic filing cabinets stackable, angels several, drop-leaf table with folding chairs storage inside, pine coffee table with drawers, 2 small plant stands metal, miscellaneous toys, 2 pet gates, 4 drawer metal filing cabinet, Costco step stool, 2" window blinds new in box, decorative tricycle plant stand, Dell laptop, cast iron pitcher pump, several pieces of yard statuary, lots of Holiday decor such as Christmas Halloween 4th of July and Thanksgiving, large wooden rocking chair, aluminum Werner step ladder, weed eater with charger, heavy duty all around storage shelf, outdoor patio set with table and 4 chairs, 2milk cans, square wash tub, air pig, warm morning stove, stainless steel storage cabinet, push mower, rubber wheeled wagon, hose reel, dolly cart, weed eater, 2 wheeler, plastic birdbath, cast iron decorative chair, miscellaneous hand tools, sawhorses, portable table saw, strawberry plow, other miscellaneous shop items, lots of small items still packed at time of listing.

We will post pictures on the Red Dirt Auction Co. Facebook Page. If you are not a Facebook member please search for Red Dirt Auction Co and request to be a member. We post all auctions on [Auctionzip.com](http://Auctionzip.com)

**Terms:** Cash or Check/with proper ID. Credit cards accepted with convenience fee. Not responsible for accidents or theft. All announcements made sale day supersedes all previous advertisements. We will have an excellent concession and provide restrooms.

Sale conducted by: **Red Dirt Auction- Auctioneer Brian K Clapp Cell # (918)540-4931**

JM-00099315

# LAND AUCTION

Saturday, September 11, 2021 10:00 a.m.

FOSS FAMILY TRUST

\*80 ACRES\* Richards Mo \*80 ACRES\*

**DIRECTIONS:** From Richards Mo go West on H hwy to 300 road go north on 300 to Indian Line go west on Indian Line to 200 Rd go North to 1/4 mile to Hudson. Property is on the west side of 200 rd. and south side of Hudson Rd.

80 acres M/L 65 acres are being tilled at this time remainder in timber making it a great place to hunt and have a return on the 65 acres of crop ground. This 80 has a lease on it at this time but will be up December 31 2021. Tenant has the right to harvest all 2021 crops. Buyer will take ownership at closing and possession January 1-2022

**TERMS AND CONDITIONS:** 10% down day of Auction remainder in Certified Funds at closing in 30 days or less

See additional pictures and info at [www.tncnevada.com](http://www.tncnevada.com)

Jay Wortman  
Agent  
417-363-4721

Cole Abele  
Auctioneer  
417-634-0881

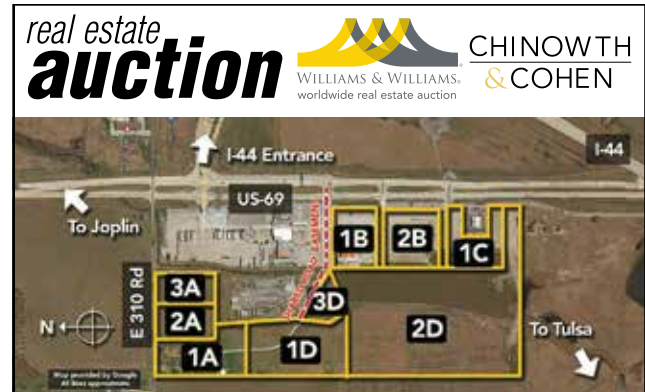
Doug Wortman  
Auctioneer  
417-448-9540

## TOWN & COUNTRY AUCTION SERVICE

1700 W. Austin, Nevada      Any statement made day of sale will precede any printed material.      Office - 417-667-2966

### AUCTIONS

### AUCTIONS



**I-44 Commercial, Land & Homes**  
Open Public Inspections 1-4pm Sun Aug 15 & Fri Aug 27

- BIG CABIN, OK 74332 • Off US-69 & E 310 Rd
- Commercial parcels include 26,655+/- sf former Truck Center, and a 4,856+/- sf former Drivers Hotel.
- Residential parcels include 2,409+/- sf main home with 1,620+/- sf garage and 2,749+/- sf apartment, and a 952+/- sf A-frame home.
- Land parcels include commercial and residential, ranging from 2+/- to 25+/- acres.

**Auctions 4pm Fri Sept 17 at Lot 1B**  
Bid on location or live online at [@auctionnetwork.com](http://@auctionnetwork.com)

Prefer Not to Wait for the Auction? Submit a Pre-Auction Offer!  
800.801.8003 • [williamsauction.com/BigCabin](http://williamsauction.com/BigCabin)

OK PHIL HELIGER RE LIC. 129912. BUYER'S PREMIUM MAY APPLY.

# GOVERNMENT EQUIPMENT AUCTION



## TUESDAY, SEPTEMBER 14

530+ ITEMS SELL  
NO RESERVE!



**DM5262** '16 Zaugg Rolba Mobil 170 snow blower



**KW9879** '09 Mack Mammoth refuse truck



**KW9834** '13 New Holland B95C backhoe



**KQ9792** '10 Case 590 Super M Series III backhoe



**DM6360** '06 GMC C8500 crane truck



**KY9193** '87 CAT Challenger 65 track tractor



**KK9370** '17 Ford F150 XLT SuperCrew pickup truck



**IJ9902** '04 Case 521DXT wheel loader

**INVENTORY INCLUDES:** backhoes, motor grader, wheel loader, tractors, pickup trucks, dump trucks, fire trucks, SUVs, flatbed trucks, utility trucks, passenger vehicles, equipment trailers, ambulance, box trucks, school buses, semi trucks, melter/appliator, lawn mowers, oil distributor truck, vans, shuttle bus, delivery truck and more. *All items are sold "AS IS." 10% buyers premium applies.*

**BID NOW! purplewave.com**

### Estate of Marge Hopwood

Saturday September 11 2021 @ 10am

26977 S 4410 Rd Vinita Oklahoma 1<sup>st</sup> house on the right just passed Bob Hart Chevrolet---The Peacock house as many know it

The property will sell at 2 pm subject to owner confirmation.

**IF YOU ARE A COLLECTOR OR A FLEA MARKET OWNER THIS WILL BE THE SALE FOR YOU!!!**

12ft x 25ft building **TO BE MOVED...** Enclosed cargo trailer...John Deer 0 turn mower-777 Track commercial with 60 in cut...cattle panels Will stop at 1pm to sell large items

**TOOLS**  
Drill press...power tools...hand tools...upright air compressor...planer...table saw... joiner...ladders...jacks...sawzall

**FURNITURE & KITCHEN**  
SS Samsung refrigerator with middle drawer...2 recliners...chairs...couches...several TVs...lamps...lamp tables...book shelves...trunks...desks...plant stands...2 china hutches completely full...metal shelves...glass top table...OAK book shelf w/ glass fronts-stack 4 high...corner desk...dining room table...beds...sleigh bed...wagon wheel hand made full size bed...dressers...bedside tables...stackable Frigidaire washer&dryer...Kenmore washer&dryer...stereo...outside table & chairs...tupper ware...sets of dishes...silverware...pot & pans...sets of bowls

**MISC**  
Fans...air conditioners...heaters...HUNDREDS of jigsaw puzzles-some never opened...HUNDREDS of DVD movies...handmade quilts...lots of decorative glassware...lots of bedding...pillows...handmade quilts...old wooden doors... 2 ceramic kilns...ceramic molds...clocks...western pictures...candles...books... LOTS of HOLIDAY DECORATIONS--SOME NEW-FOR EVERY HOLIDAY... handcap mobility scooter (needs batteries)...Harley Davidson item...Lots of real nice ladies clothes-some western style...bird cage...aquariums...terrariums...

Kenworthy Auction  
Welch OK

Albert 918-694-7019 Christy 918-694-6127

Follow us on Kenworthy Auction Facebook page, Vinita Journal & Big Nickel Not responsible for accidents Terms- cash or check with proper ID- NO CARDS

**AUCTION DEADLINE IS 9PM THURSDAY**

**15 WORDS \$11.75 - CALL THE BIG NICKEL TODAY AT 417-624-4100!!**

## PUBLIC AUCTION

121 E SPLITLOG ST. • GOODMAN, MO

**SEPT 12, 2021-1:00 PM**  
**ESTATE OF ROBERT & JOY EVANS**  
**50 YEARS OF ACCUMULATED ITEMS**

**FURNITURE • APPLIANCES • IRON WAGON WHEELS**  
**HUGE COLLECTION OF COLLECTIBLE CHICKENS!**  
**TOOLS & CONSTRUCTION MATERIALS & MORE!**

### DON'S AUCTION SERVICE

AUCTIONEER, WAYNE DUCKETT, 417-499-6425  
AUCTIONEER, STEVEN DUCKETT, 417-437-3001  
CLERK, PAT DUCKETT, 417-499-6424



JM-00099340



## FARM AUCTION

Saturday, September 11 9:30 am

**RESTROOMS** **19140 Gum Road- Granby, MO** **CONCESSIONS**  
PLENTY OF PARKING - WATCH FOR SIGNS!

Directions: **FROM GRANBY** take E Hwy north to Old E Hwy. Turn west, go approx. 1/4 mile, turn west on Gum Rd. Go 1 mi. to T, turn south (you are still on Gum Rd.) Go approx. 1-1/2 mi. to auction on north side of road. **FROM DIAMOND** go south on 59 Hwy 3-1/2 mi. Turn east on Greenbrier, then north on Otter 1/2 mi. to Gum Rd. Turn east, go approx. 1-1/2 mi. to sale on north.

### Owner Fred & Donna Hansford

Fred & Donna moved to this farm in 1960.  
They have been farming & running cattle here for 61 years.

**TRACTORS**  
2-105 White cab (no heat or air) real tires, diesel  
730 JD diesel narrow front  
770 Oliver narrow front, flat fenders  
770 Oliver wide front w/610 loader  
2 buckets & hay spike (older)  
770 Oliver wide front (older)  
770 Oliver narrow front (older)  
1355 Oliver wide front, 3 pt., diesel  
670 MM wide front, 3 pt., gas

**EQUIPMENT**  
10 ft. Rome disc  
JD 3 pt. chisel plow 9 ft.  
Oliver 5 bt plow  
Oliver 4 bt plow  
Glenco 4 row cultivator  
IHC 510 double disc wheat drill  
Glenco Viber shank 12 ft.  
JD wheel disc. 20 ft. manual fold  
Brillon 12 ft. spring tooth on wheels  
Glenco field cultivator 20 ft. manual fold  
10 ft. Bush Hog pull type (1 seal out)  
3 section spring tooth 3 pt.  
2 - pull type spring tooth  
JD 4 row corn planter  
IHC 7 ft. drag type disc  
Model L JD manure spreader  
Samulky 32 ft. grain elevator w/electric motor  
2 - 3 pt. blades  
Howse 6 ft. brush hog 3 pt.  
3 pt. post hole digger, 12" auger  
2 section rotary hoe 3 pt.  
Ferguson digger 3 pt.  
3 pt. 2 row cultivator  
4 sections of smoothing harrow  
1 - 4 wheel wagon w/steel floor  
3 - 4 wheel wagons running gears  
Shaver 3 pt. hyd. post driver 10"

**SALVAGE TRACTORS**  
M Farm all narrow front  
WD 45 wide front, 3 pt.  
McCormick Deering W30  
770 Cockshutt wide front  
3 pt. (burnt)  
600 Ford w/loader, 3 pt. (burnt)  
GVI MM propane

**SPRAYER**  
Schaben 300 gal. boomless  
sprayer w/hand nozzle. New, never used,  
shedded, pull type

**GN STOCK TRAILERS**  
97 Chpl 20 ft. GN stock trailer (has rust)  
73 Rawhide 20 ft. GN stock trailer (has rust)

**HAY EQUIPMENT**  
640 NH Baler 4x5 auto twine tie (1 owner)  
shedded  
Kuhn 9 ft. disc mower 1 owner, used 2  
seasons  
Vassar, disc mower cart, used 2 seasons  
Durabuilt 10 wheel rake pull type  
NH 9 ft. sickle mower, pull type  
NH 256 bar rake  
Bumper pull tandem axle bale unroller  
(used 2 seasons) can be pulled by ATV  
MW 4 spool tedder

**MISCELLANEOUS**  
Artic Cat 300 4 wheeler w/new tires (does not run)  
Pile of used T post  
Antique drill press  
Platform scales  
Hay spikes 3 pt.  
Pair of IHC steel tractor wheels  
Tractor & combine rims  
2 front hubs for Oliver tractor  
2 front weights for Oliver tractor  
60 gal. stand up air compressor  
w/motor (no compressor)  
Antique house jack  
2 wagon loads of misc.  
Roller chain  
Chisel teeth  
Steel band for old wagon wheels  
A90 Wheel Horse 36" cut riding mower  
(doesn't run)

**DUMP TRUCK**  
(CONIGNED BY NEIGHBOR)  
76 Ford w/Cat engine, 13 spd, 10 hole lug

**WOOD SPLITTER**  
Cub Cadet 27 ton Honda engine

View pictures at: [AuctionZip.com](http://AuctionZip.com) Reference #41956

**TERMS: CASH, CHECKS WITH PROPER I.D. NOTHING REMOVED UNTIL SETTLED FOR**

**DOUG HANSFORD** **STEVE HODGES**  
Granby, MO 417-439-0539 **AURORA, MO 417-894-1070**

We do not accept credit or debit cards. ID required for bidder number.  
ANY ANNOUNCEMENT DAY OF SALE SUPERSEDES ANY PRINTED MATERIAL  
CONCESSIONS ON GROUNDS NOT RESPONSIBLE FOR ACCIDENTS.

**View pictures at: AuctionZip.com Reference #41956**

**TERMS: CASH, CHECKS WITH PROPER I.D. NOTHING REMOVED UNTIL SETTLED FOR**

**DOUG HANSFORD** **STEVE HODGES**  
Granby, MO 417-439-0539 **AURORA, MO 417-894-1070**

We do not accept credit or debit cards. ID required for bidder number.  
ANY ANNOUNCEMENT DAY OF SALE SUPERSEDES ANY PRINTED MATERIAL  
CONCESSIONS ON GROUNDS NOT RESPONSIBLE FOR ACCIDENTS.

**AUCTIONS** **AUCTIONS**

### LIVING ESTATE AUCTION

**SATURDAY SEPT. 11TH, 2021 • STARTING AT 10:00 AM**

**Located: 620 East Lewis Street, Carterville MO 64835**

#### REAL ESTATE

This Home Features Two Bedrooms, a Large Kitchen, Wash Room, Single Bath, and a Covered Porch. A Large Shop 28 ft. x 36 ft. with an office and bathroom. Both the home and the shop have metal roofs. The shop has a safe room and a carport is between the shop and the house.

#### PERSONAL PROPERTY:

220 Upright Air Compressor (LIKE NEW); 16 Speed Drill Press; Floor Jack; Black & Decker Table Saw; Ladders; Craftsman Tool Box; Belt Sander; Craftsman Router; Jig Saw; Rock Island Vice; Bench Grinder; Garden Tools; Small Generator; Swamp Cooler; Fish Cooker; Nut & Bolt Organizer; Two-Burner Camp Stove; Weed Eater; Pull Lawn Aerator; Metal Patio Table & Chairs; Park Bench; Book Shelves; Sofa & Love Seat; China Cabinet; Computer Desk; Old Steamer Trunk; Chest of Drawers; Dresser; Dining Table w/Chairs; Metal Shelves; Whirlpool Matching Washer & Electric Dryer; Double Door Refrigerator; Tater & Onion Box; Shark Steamer; Gas Charcoaler; Old School Desks; Winchester 3030; Mossberg S51M 22 Rifle w/ Peep Sight; Star 9MM Pocket Pistol; Pool Table; **MORE ITEMS COMING AS WE UNPACK THEM CHECK BACK FOR AN UPDATED LIST - LOTS & LOTS OF UNLISTED ITEMS!!!**

#### AUCTIONEER'S NOTE:

Due to health problems Mr. Besett has moved in with his daughter. He's really wanting to sell his property. It sets on a corner lot with a nice shaded lot behind his house. We will sell both lots as 50x100 at this great offering!!

**OWNER: CARROLL DEAN BESETT**

#### AUCTIONEERS:

**Bud Armstrong** 918-541-8006

**Cody Ross** 417-529-4416

Cashier - Earl Reynolds

Clerk - Ellen Lauber

Ringman - Mike Lauber

If You Want To Sell.  
We're The Ones To Tell!!!



**Jim Lievens**  
AUCTIONEER  
417-455-5311 • 417-434-4528 Mobile  
[www.circleauction.com](http://www.circleauction.com)  
Check website for photos

**AUCTIONEER'S NOTE:**  
Good Auction! We Have Name Brand Tools, Electronics, Furniture, Office Supplies, Etc! Lot Of Sheriff Recovery Items! Plus, Surplus From County!! DO NOT MISS!!! See You Sat 10 AM!!!

Speakers; Car Radios; 2 Alvarez Acoustic Guitars; Asheville Acoustic Guitar

**FURNITURE, APPLIANCES & MISCELLANEOUS:** Metal Folding Chairs; Stainless Commercial Toaster Oven; 4 Drawer Metal File Cabinets; Metal Office Desk; Metal Secretarial Desk; Oak Raise Panel Bookcase; Oak Pigeon Hole Cabinet; Folding Table, Oak Top Cabinet; Window Air Conditioner; Stainless Paper Dispenser; Camera Tripods; Canon 35mm Camera; Camcorders, Silverware; Microwave Oven; Metal Shelving; Office Cubical Walls; Large Bulletin Boards; Pallets, Tires; Office Supplies; Ceiling Fan; Light Fixtures; Glass Doors; Lot Of Jewelry; Jewelry Boxes; Stainless Hand Rail; Laptop Bags, Figurines; Rolling Desk Chair; Motorcycle Helmets, CD's; First Day Issue - Gold Stamp Collection; President Coin Collection  
ID REQUIRED FOR BIDDER NUMBER - NOT RESPONSIBLE FOR ACCIDENTS - LUNCH - TERMS CASH/VISA/MC/DISCOVER - PREVIEW BY APPOINTMENT



JM-00099340

**FABULOUS PRIVATE COLLECTION  
ANTIQUE & PRIMITIVE FURNITURE, SPOOL CABINETS,  
ANTIQUE STORE FIXTURES & COLLECTIBLES  
AUCTION**

**Saturday, September 18, 10:00 AM  
10103 Lawrence 1010, Sarcoxie, MO**

**DIRECTIONS:** From Exit 33 on Interstate 44, go North on 1010 to Auction! Watch for signs!

**AUCTIONEER'S NOTE:** Steven M. King has been a premier collector of Fine antiques and Collectibles for over 40 years! The following is part of a private collection of some rare and unusual pieces he owns and has now decided to sell! Sure to be surprises!

**FOR ALL PICTURES VISIT BOBKAUCTIONS.COM OR AUCTIONZIP.COM**

**CALL OFFICE 417-882-5664 ANT. FURNITURE, PRIMITIVE FURNITURE, SPOOL CABINETS,  
ANT. STORE FIXTURES & COLLECTIBLES**

Late 19th century carved oak Bookcase w/ carved maidens! Late 19th century carved oak Bookcase w/ maidens! Lion Coffee Box (old red paint)! Rare apartment size seller's Kitchen Cabinet! Antique oak Kitchen Cabinet! Antique oak Ice Chest w/ lift top! Early 19th century Chinois Erie Corner Cabinet, Jason Robards, former owner! Antique Monaska Coffee Box! Late 18th century Work Table! Antique Crowley's Need Cabinet, (12 drawer)! Elgin National Coffee Mill! Antique wooden Northwestern Cabinet Co., Spice Dispenser! Antique oak School Masters' Desk! Antique oak Showcase/Humidor! Early 19th century Chinois Erie Library Table, Jason Robards, former owner! Late 19th century ebonized Credenza w/ marble top! KC floor model Showcase & Store Furniture! Two early 19th century Chair Tables (1 w/ old red paint)! Antique Mission oak Loveseat! Early pine Corner Cabinet (raised panel)! AW & CO. choice pressed herb Cabinet (48 drawer)! Large wooden Press (old paint)! Walnut multi drawer doctor's Cabinet! Albino Peacock! Antique wooden Washing Machine! Two late 19th century Vases, 24"! Antique wicker Vanity Desk & Chair! Amphora (approximately 30") figural Vase! Late 19th century Shaving Mirror! Antique oak Needle Cabinet! Garland Ice Box! Wicker child's Chair! Tiffany Dresser Box! Sterling Dresser Box! Abalone Dresser Box! Misc. Dresser Boxes! Antique walnut drop-leaf Table! Antique walnut pegged Harvest Table! Large wooden Mill Bin! Primitive Rocker! Painting on board! Country Store Scale! Oval wicker Table! Pair pottery Oriental Lamps! Bronze figural Mantle Clock! Hand-crank Centrifuge! Rare early Work-Bench! Antique oak three stack Lawyers' Bookcase, (Macy) w/ drawer! Primitive 16 drawer Apothecary Cabinet! Bronze Lamp! Wicker Tea Cart! Primitive wooden Trunk! Primitive wooden Coke Ice Chest! Small painted hanging Cabinet! 18th century lift-top Chest! Painted antique Spinning Wheel! Large antique oak Ice Box w/ lift top! Coach Display! Wooden Ship! Early curly maple Chest! Maple Kitchen Cabinet! Late 18th century Highboy Chinois Erie! Primitive Table! Antique Fireplace Mantle! Possum-belly kitchen Cabinet! Rare fold-up Library Ladder! Antique 12 pane early step-back Hutch! Oak Kitchen Cabinet! Inlaid parlor Desk! J.P. Coats Spool Cabinet! Wooden rolling Tool Box! Folk Art Cathedral Clock (lighted)! Antique hanging Lamp w/ painted shades! National brass 313 Candy Store Cash Register! National brass Cash Register! Detroit Fruit Scale! Antique Mantle Clock w/ amphora Figural Top! Antique Atwater Kent floor model Radio, (works)! Glass top Jester base Table! Mid- 19th century Bull's Eye Mirror! Two antique floor Lamps! Early 12 pane Corner Cabinet! Mid-19th century Doctor's Desk! General Store 16 drawer apothecary Cabinet! Quarter sawn oak Corner Cabinet! Victorian Étage/credenza! Mid-19th century tilt top chinois Erie Table! Primitive Table! Two needlepoint Chairs! Pine Pulpit! Primitive Dry Sink! Early cherry Corner Cabinet! Folk Art Oil Hunt Scene! Merrick's double barrel Spool Cabinet! Merrick's table top Spool Cabinet! Late 19th century Harvest Table! Pine primitive Corner Cupboard! Metal Needle Display! Rare Belding's Silk Cabinet! Large oak Spool Cabinet! Oak General Store Cigar Cabinet! General Store Seed Cabinet! Primitive Dry Sink! Early 12 drawer Apothecary Cabinet! Watch maker's Desk! Rare, P. Lorillard & Co., Tin Tag Tobacco Cabinet! Multi drawer Medical Cabinet w/ marble top! Rare, early wooden Cash Register! Hotel Room Sign! Early 19th century Pewter Display Cabinet! Anglo-Indian Campaign Chest! Twelve pane Corner Cabinet! Forty drawer Ribbon Cabinet! Amity Leather, leather Cabinet! Antique Bingo Machine! Pine Gothic Cabinet! Amberg Letter File, 45 drawer w/ tambour! Peacock Bird! Child's Trike! Adirondack Rocker! Two Roulette Wheels! Fazer candy store Jars! Victorian Plant Stand! Industrial Porcelain Table! Primitive Bench! Three metal Trash Cans! Antique hand painted Carousel Horse! Primitive Child's Wagon! U.S. Army Paratrooper Bike! 1932 Swiss Army Bike, all original! General Store Champion Churn! Wicker Chair & Table! Primitive Wheel Barrel! Wood Box, painted green! Three antique Buggy Seats! Wooden Trunk! Organ Chair! Two Milk Cans! Brass floral floor Lamp! Sheffield silver-plate bun Warmer! Metal Toy Car, five Engine Trucks & Child's Riding Truck! Rare, No. 2, bronze Coffee Grinder! Misc. Frames! General Store Cheese Cutter! Antique Wall Phone! Amphora Corn Husk Vase! Two Royal Dux Vases! Parlor Lamp! Small metal Lamp! Zeno gum Display! Corona Wool Display!

**TERMS:** CASH, credit w/3% convenience fee, personal or company checks accepted only if known by us or w/a bank letter made to RLK, Inc. No Exceptions, no out of state checks! All items paid for day of Auction! All items sold As Is Where Is.



**SOUTHWEST AUCTION SERVICE  
FALL EQUIPMENT  
CONSIGNMENT AUCTION**

151 Ste Hwy 76, Rocky Comfort, MO  
(outside of Wheaton)

**SUNDAY, SEPT 26TH @ 10:00 AM**

**Taking consignments NOW on Farm Machinery,  
Tools, Shop Equip, Vehicles, Trailers, Firearms &  
Sporting Goods (FFL rules apply) and more!**

Call 417-652-7540 for more info!  
Email: [kathy@swaauction.com](mailto:kathy@swaauction.com)  
Website: [www.swaauction.com](http://www.swaauction.com)

**AUCTIONS**

[WWW.BIGNICKEL.COM](http://WWW.BIGNICKEL.COM)

**AUCTIONS**

CALL ABOUT our classified ad specials. 417-624-4100.

**Estate Auction**

**MONDAY SEPTEMBER 13TH, "2021" 10:00 AM**

**Location:** Shell Knob MO. From the Shell Knob Plaza go South on Hwy 39, 1/2 mile. Then go left on Hwy YY. Go 9/10 mile. Auction on left. (26416 State Hwy YY, Shell Knob MO).

**REAL ESTATE - TRAILERS - HITACHI MINI EXCAVATOR  
FORD DIESEL PICKUP - TOOLS - GUNS  
ANTIQUES & COLLECTIBLES - FURNITURE - MISC.**



Go to [www.stumpffauction.com](http://www.stumpffauction.com) to view complete listing and photos.

**Estate of Bob & Marie Rogers**

**Owner: Becky Davison**

**Added Estate of Dan Schaffer**



**Auctioneer: Donnie Stumpff**  
Licensed Broker/Auctioneer MO & AR  
State Champion Auctioneer MO & AR  
#1409 & #PB00051442



**417-847-2507**  
[www.stumpffauction.com](http://www.stumpffauction.com)

Check website for complete listing & photos



**Parker Stumpff**  
State Champion Auctioneer AR  
#2352

**CONSIGNMENT AUCTION  
TUESDAY & FRIDAY • 5PM**

**18732 St. Hwy 59 • Neosho, MO  
(across from the airport)**

We are a family-owned and operated Consignment Auction. Nothing too big or too small. WE SELL IT ALL!

**DON'S AUCTION SERVICE**

**3rd Generation Auctioneers**

**WAYNE DUCKETT & STEVEN DUCKETT**

**FOR INFO CALL LEA DUCKETT • 417-389-0939**

**ANTIQUES, FLEA MARKETS & COLLECTIBLES**

**The Hitch N' Post  
Antique & Flea Market**

**• 76,000 sq. ft.  
• Over 400 Vendors**

**LARGEST FLEA MARKET IN THE 4-STATE AREA!**

Mon-Sat: 10:00 - 5:30  
Sunday: **Go to Church!**  
3rd Saturday:  
**Outdoor Swapmeet**

**Diner 66 OPEN**

401 Commerce Ave.  
Commerce, OK  
918-675-4519  
[www.thehitch-n-post.com](http://www.thehitch-n-post.com)  
**David L. Mason - Owner**

**AUCTIONS**

**AUCTIONS**

**AUCTIONS**

**AUCTIONS**

**AUCTION**

**Saturday, September 18, 2021 • 10:00 a.m.**

**Magee's General Store Retirement Sale**

**LOCATION: 401 RANSON • FORT SCOTT**

at the Acre U Storage Building

**Auctioneers Note:** Dick has been in the same location for 23 years, selling large amount of antiques primitives & collectibles.

**ITEMS:** Oil Lamps - Aladin & Rail Road; Pocket Knives; Great Western Cast Iron Coal Stove - Nice; Old GE Metal Fans; Antique Furniture; Crocks; Sat Irons; Old Hand Tools; Lamp Globes; Collectible News Paper; Fishing Equipment - Rods, Reels, Tackle Boxes; Small Appliances; Antique Trunks; Hideaway Bed; Gas Cans; Building Materials; Doors - Interior & Exterior Commercial; Warm Machinery Stoves; Glassware - Granite; Iron Beds; 100 yr old 12' hardware store cabinet; Several complete storage units will be opened and sold as whole.

Owner Dick Magee  
Home 620-223-6999 • Cell 620-224-1353

Auctioneer Andy Johnson  
620-224-6512

**MOVING AUCTION**

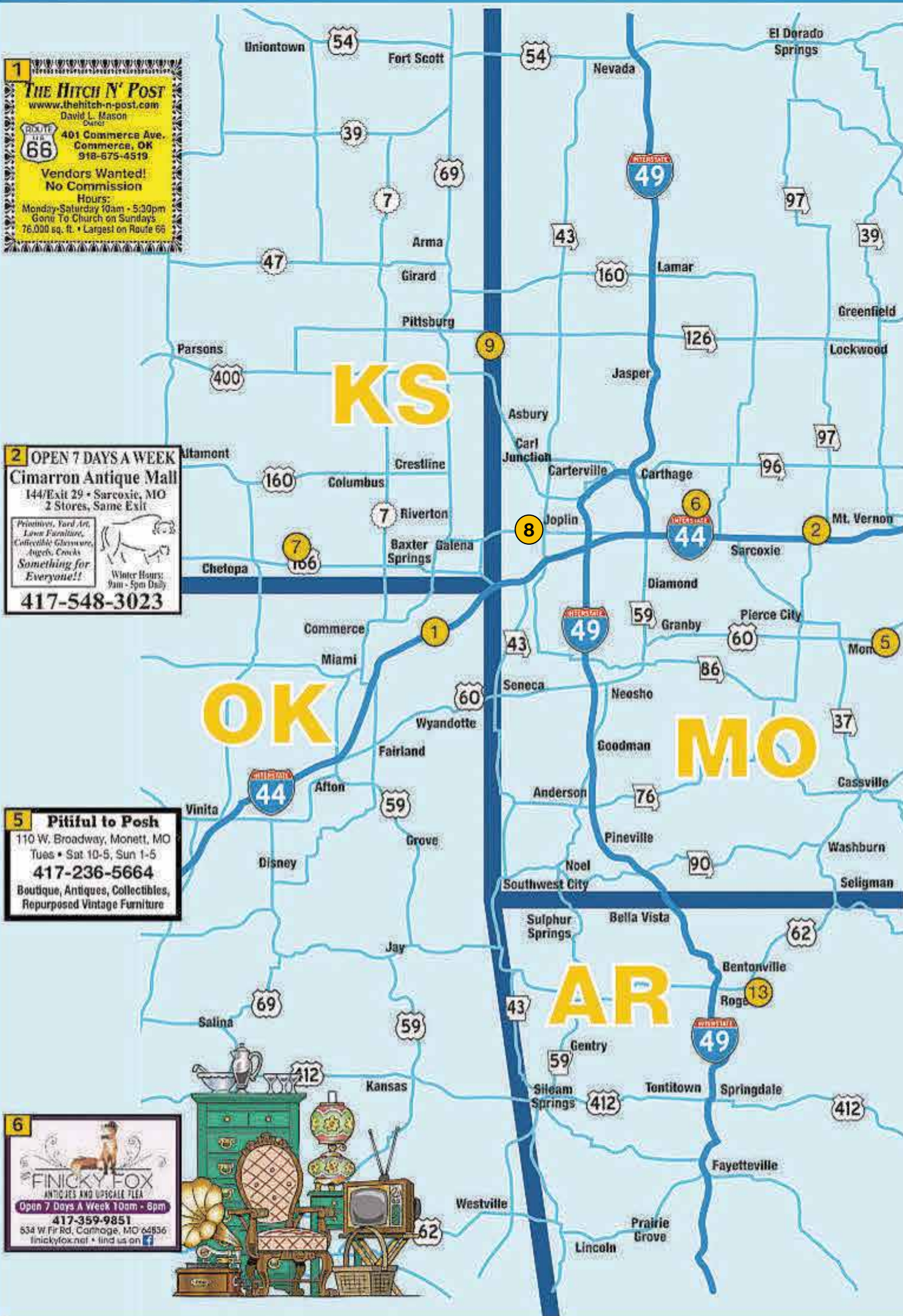
Fri., Sept. 10th, 9:36am  
17794 S. 580 Rd.

Fairland, OK

Mahindra 1626 tractor with 27 hours; new finish mower; trailers; tools; lots of western and rustic furniture and decor; guns; and much more!  
Owners: Troy & Mary Parrish  
[lestermillerauctions.com](http://lestermillerauctions.com)  
918-533-6404

**NEED TO SELL YOUR HOUSE OR PROPERTY?** Get the best coverage around. Call the Big Nickel and our helpful representatives will assist you in creating your ad. You can even pay over the phone.  
Call 417-624-4100.

# Antique & Flea Market Directory



**1 THE HITCH N' POST**  
 www.thehitch-n-post.com  
 David L. Mason  
 Owner  
 401 Commerce Ave.  
 Commerce, OK  
 918-675-4519  
**Vendors Wanted!**  
 No Commission  
 Hours:  
 Monday-Saturday 10am - 5:30pm  
 Gone To Church on Sundays  
 76,000 sq. ft. • Largest on Route 66

**7 Saviors of Rust Flea Market**  
 Spaces Starting at \$20 a month  
 Open Tuesday-Saturday, 10am-6pm  
 Hwy 59/421 Maple, Chetopa KS  
**620-432-1770**  
 Like us on Facebook

**2 OPEN 7 DAYS A WEEK**  
**Cimarron Antique Mall**  
 144/Exit 29 • Sarcoxie, MO  
 2 Stores, Same Exit  
 Primitive, Yard Art, Lawn Furniture, Collectible Glassware, Angels, Crocks  
*Something for Everyone!!*  
 Winter Hours: 9am - 5pm Daily  
**417-548-3023**

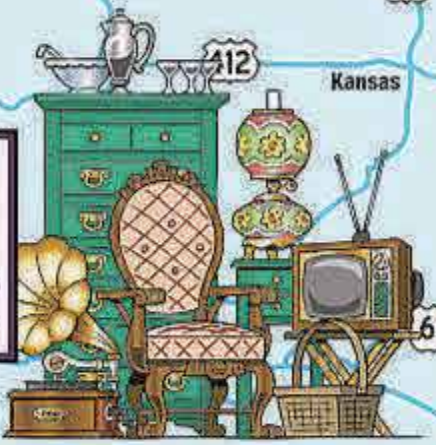
**8 JODYJO'S FLEA MARKET**  
 1708 S. MAIN  
 Joplin, MO 64804  
 Wed-Sun 10am-5:30pm  
**417-438-4533**

**5 Pitiful to Posh**  
 110 W. Broadway, Monett, MO  
 Tues • Sat 10-5, Sun 1-5  
**417-236-5664**  
 Boutique, Antiques, Collectibles,  
 Repurposed Vintage Furniture

**9 PARADISE MALL**  
 Largest in SE Kansas  
 Furniture, Antiques & More!  
 OPEN 7 DAYS!  
 105 S. BROADWAY  
 Pittsburg, KS  
**620-232-6956**

**6 FINICKY FOX**  
 ANTIQUES AND UPGRADE FLEA  
 Open 7 Days A Week 10am - 8pm  
**417-359-9851**  
 634 W Fir Rd, Carthage, MO 64836  
 finickyfox.net • find us on f

**13 Somewhere in Time**  
 ANTIQUE MALL  
 719 W. Walnut • Rogers, AR  
 Located in the old Shetty Lane Mall  
 479-636-0474  
 somewhereintime.com



**LIMITED SPACE AVAILABLE!**  
 Hurry! Call today to get your spot and start reaching more customers in the 4-State Area!

**Your Ad Could Be HERE!**  
**Call Grace @ 417-624-4100**

# MAHINDRA

**#1 Selling Farm Tractor In The World!\*\*** ✓ Push More  
 ✓ Pull More  
 ✓ Lift More

**7 YR Powertrain Warranty on Most Tractor Series**  
**MOST MAHINDRA TIER 4 TRACTORS HAVE NO DPF, REGEN, OR DEF**

**CALL FOR CASH PRICE**



**MAHINDRA 4540**  
 40 HP, 2WD, w/Loader, 8X2 gear trans.,  
 2866 lb. Loader Lift capacity, 3527 lbs.  
 @ 3 pt. hitch, 5192 lbs. tractor weight

**Tier 4  
 No DPF or  
 Regen**

**\$29618\*/MO.**

**0 DOWN, .99% FINANCING 84 MO WAC**

**MAHINDRA 1640 HST CAB**

40 HP, 4WD, W/Loader, CAB W/H&A, Hydrostat  
 Trans, 1650 lb. Loader Lift capacity, 2646 lbs. @3pt.  
 Hitch, 3627 lbs. Tractor Weight.

**Tier 4  
 No DPF or  
 Regen**

**\$41985\*/MO.**

**0 DOWN, 84 MO FINANCING WAC**



**MAHINDRA 2665 SHUTTLE CAB**

65 HP, 4WD, Cab w/Heat & Air, Loader, 12x12 Shuttle Shift,  
 Trans., 1 Set Remotes, 3,122 lb. Loader Lift Capacity,  
 3,300 lbs. @ 3 pt. hitch, 4,600 lbs. Tractor Weight.

**Tier 4  
 No DPF or  
 Regen**

**\$53102\*/MO.**

**0 DOWN, 84 MO FINANCING WAC**



**MAHINDRA 2670 PST CAB**

70 HP, 4WD, Cab w/Heat & Air, Loader, 12x12 Power Shuttle,  
 Trans., 1 Set Remotes, 3,528 lb. Loader Lift Capacity,  
 3,528 lbs. @ 3 pt. hitch, 5,390 lbs. Tractor Weight.

**Tier 4  
 No DPF or  
 Regen**

**\$59404\*/MO.**

**0 DOWN, 84 MO FINANCING WAC**



\*\*2018 data including all Mahindra Group Brand Sales

\*PRICE PROGRAMS SUBJECT TO CHANGE

**Tatum Motor Company**  
 FARM TOOLS SINCE 1889

**931 N. BUS. HWY. 71  
 ANDERSON, MO  
 417-845-3563  
 HOURS M-F 8-5 • SAT 8-NOON**

**1033 W. HENRI DE TONTI BLVD  
 (412 WEST), TONTITOWN, ARK  
 479-361-9488  
 HOURS M-F 8-5 • SAT 8-NOON**

**MAHINDRA 6075 PST CAB**  
**SOLD 18\*/MO.**  
 Tier 4 No DPF Regen  
 75 HP, 4WD, w/Loader, 8X2 gear trans., CAB W/H&A, 3500lb.  
 Loader Lift Capacity, 4840 lbs. @ 3 pt. hitch  
**CALL FOR CASH PRICE**

**MAHINDRA PACKAGE DEALS**

**MAHINDRA eMax20S HST**  
 20 HP 4WD, w/Loader, w/ 4' Finish Mower, 4' Box Blade

**Call for Cash Price \$22532\*/MO.**  
**0 DOWN, 84 MO FINANCING WAC**

**MAHINDRA Max 26 HST**

25 HP, 4WD, w/Loader, w/ 5' Box Blade  
**Call for Cash Price \$28646\*/MO.**  
**0 DOWN, 84 MO FINANCING WAC**

**MAHINDRA 1626 SHUTTLE**  
 25 HP, 4WD, w/Loader, w/ 5' Box Blade

**Call for Cash Price \$29757\*/MO.**  
**0 DOWN, 84 MO FINANCING WAC**

**MAHINDRA 1626 HST**

25 HP, 4WD, w/Loader, w/ 5' Brush Cutter & 5' Box Blade  
**Call for Cash Price \$31286\*/MO.**  
**0 DOWN, 84 MO FINANCING WAC**

**MAHINDRA 2638 HST**

38 HP, 4WD, w/Loader, w/ 5' Box Blade  
**Call for Cash Price \$37235\*/MO.**  
**0 DOWN, 84 MO FINANCING WAC**

**USED EQUIPMENT**

(M) MO • (A) ARK

- (M) KUBOTA B7800, 30HP, 4WD, w/Loader, HST trans..... \$11,900
- (A) MAHINDRA eMAX22, 22HP, 4WD, w/Loader, HST trans ..... \$9,900
- (M) MAHINDRA eMAX25, 25HP, 4WD, w/Loader, HST trans ..... \$9,900
- (A) MAHINDRA eMAX25, 25HP, 4WD, w/Loader & Belly mower .... \$15,900
- (M) MAHINDRA 6530, 65HP, 2WD, w/Loader ...**SOLD**..... \$16,900
- (M) MAHINDRA 5035, 50HP, 4WD, w/Loader, PST trans ..... \$18,900
- (M) MAHINDRA m85, 85HP, 4WD, w/Loader.....**SOLD**.....\$26,900
- (M) MAHINDRA 6525, 62 HP, 2WD, w/Loader ...**SOLD**.....\$14,900
- (M) MAHINDRA 4025, 41HP, 4WD, w/Loader, Shuttle Trans.....\$16,900
- (M) MAHINDRA max26, 26HP, 4WD, w/Loader, Shuttle Trans .....\$12,900

**MAHINDRA SUPERIOR PERFORMANCE:**

- Heavy-duty components: Tough & rugged... Keep right on performing day after day.
- Sturdier chassis: Greater stability... Keeps you safe while handling rigorous work.

**Mahindra Rise.**  
 www.tatummotor.com  
 e-mail: tatumtr@olemac.net